

Frugal event data: how small is too small?

A human performance assessment with shrinking data

Amélie Gruel

Lucía Trillo Carreras

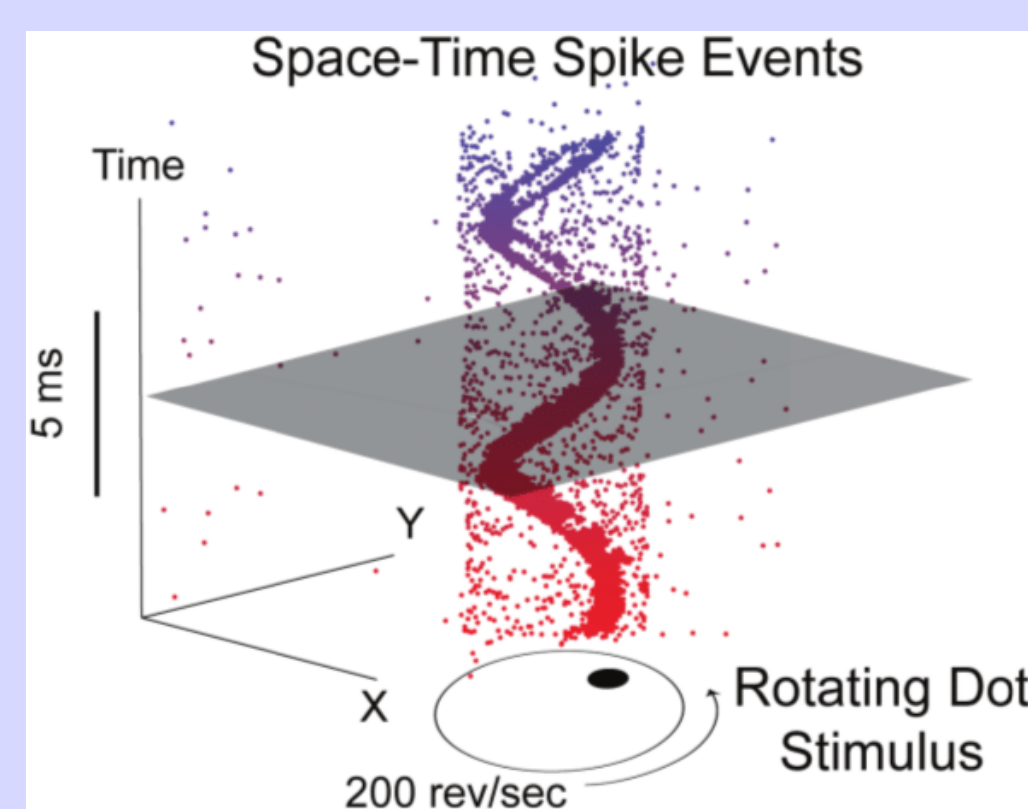
Marina Bueno García

Ewa Kupczyk

Jean Martinet

i3S CNRS, Université Côte d'Azur - Sophia Antipolis, France

Event camera



[Lichtsteiner, 2008] & [Mueggler, 2015]

Event data downscaling

Spatial downscaling methods

[Gruel, 2022; Gruel 2023]:

- spatial funnelling
- event count
- log-luminance reconstruction
 - linear
 - cubic
- spiking neural network-based pooling
 - separate
 - mutual

Temporal downscaling methods:

- temporal funnelling
 - synchronous
 - asynchronous
- structural
 - stochastic
 - deterministic

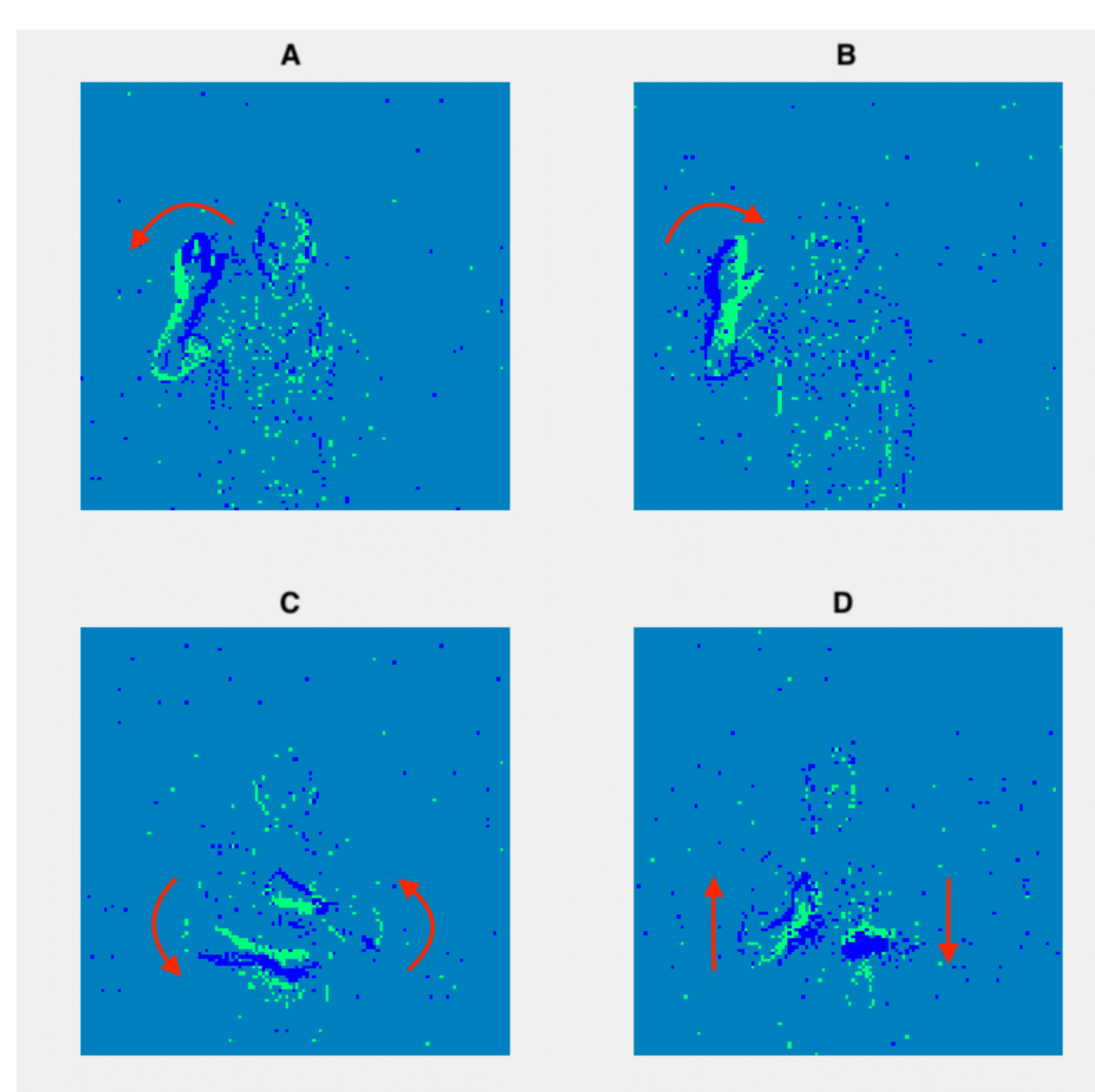
References

- [Amir, 2017] A. Amir, B. Taba, D. Berg, T. Melano, J. McKinstry, C. Di Nolfo, T. Nayak, A. Andreopoulos, G. Garreau, M. Mendoza, J. Kusnitz, M. Debole, S. Esser, T. Delbruck, M. Flickner, and D. Modha (2017). A Low Power, Fully Event-Based Gesture Recognition System. *CVPR*.
- [Fang, 2021] W. Fang, Z. Yu, Y. Chen, T. Masquelier, T. Huang and Y. Tian (2021). Incorporating learnable membrane time constant to enhance learning of spiking neural networks. *ICCV*.
- [Gruel, 2022] A. Gruel, J. Martinet, T. Serrano-Gotarredona and B. Linares-Barranco (2022). Event data downscaling for embedded computer vision. *VISAPP*.
- [Gruel, 2023] A. Gruel, J. Martinet, B. Linares-Barranco and T. Serrano-Gotarredona (2023). Performance comparison of DVS data spatial downscaling methods using spiking neural networks. *WACV*.
- [Lichtsteiner, 2008] P. Lichtsteiner, C. Posch and T. Delbruck (2008). A 128x128 120 dB 15 us Latency Asynchronous Temporal Contrast Vision Sensor. *IEEE J. of Solid-State Circuits*.
- [Mueggler, 2015] E. Mueggler, G. Gallego and D. Scaramuzza (2015). Continuous-Time Trajectory Estimation for Event-based Vision Sensors. *RSS*.

How small can event data be, while preserving sufficient information for the task at hand?

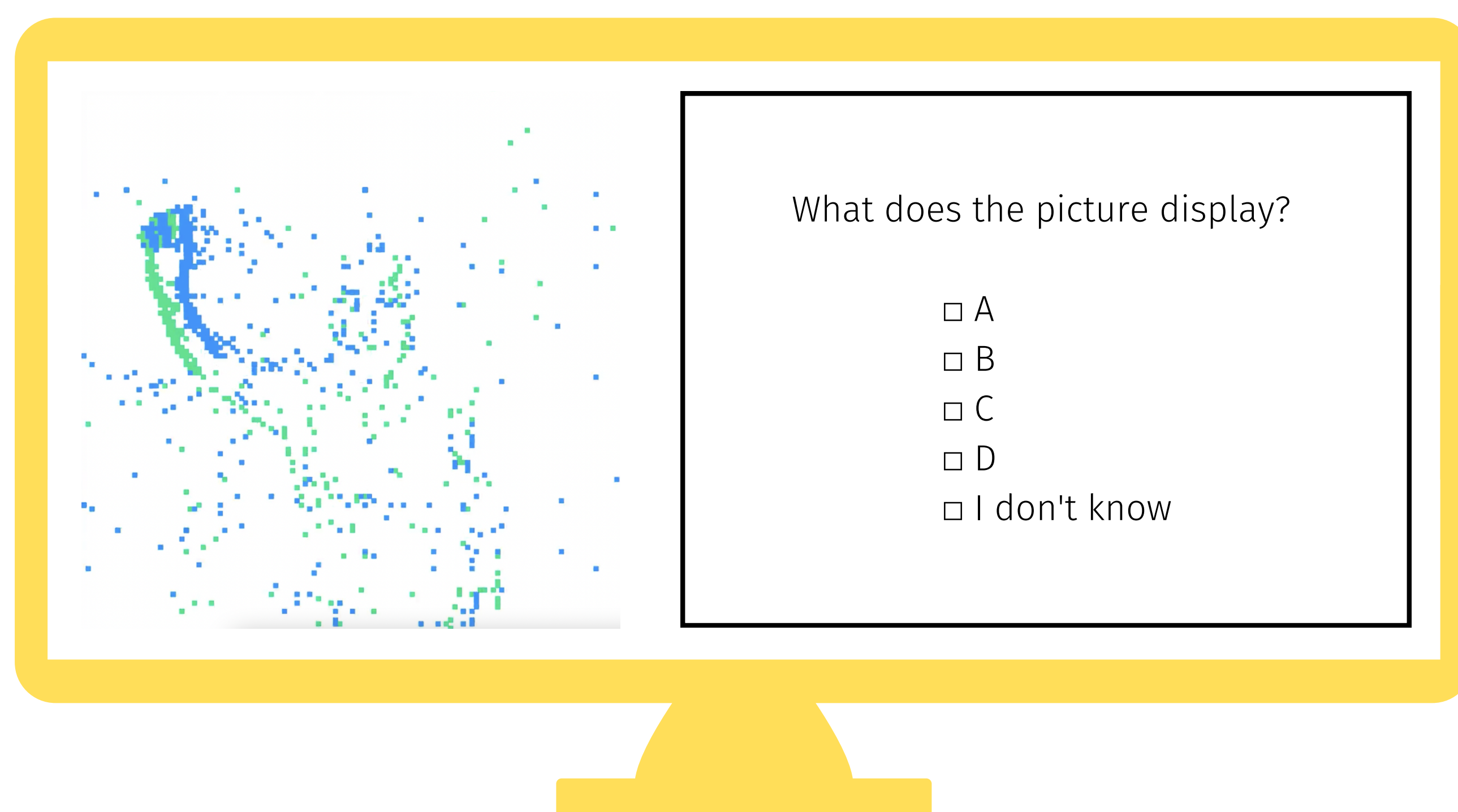
In this **first human perception study with event data**, we show:
 → the unequal data quality between event downscaling methods.
 → the existence of a size threshold under which human performance falls below the chance level.
 → some unexpected discrepancies in a comparison between human and machine performance.

Experimental setup

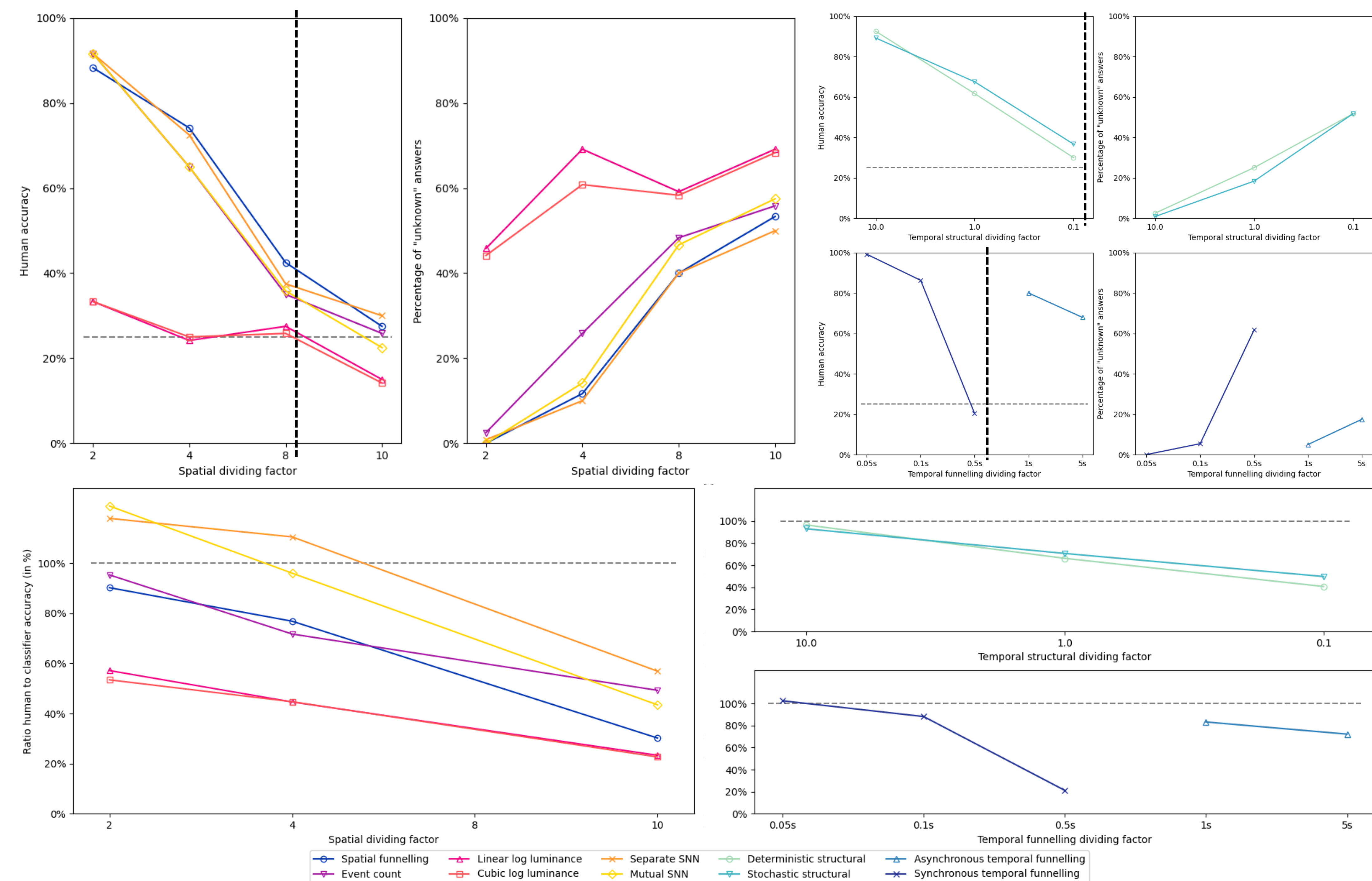


	18-25 y.o.	More than 25 years old	Total
Age	18-25 y.o.	More than 25 years old	Total
Female	11	11	22
Male	20	17	37
Other	0	1	1
Total	31	29	60

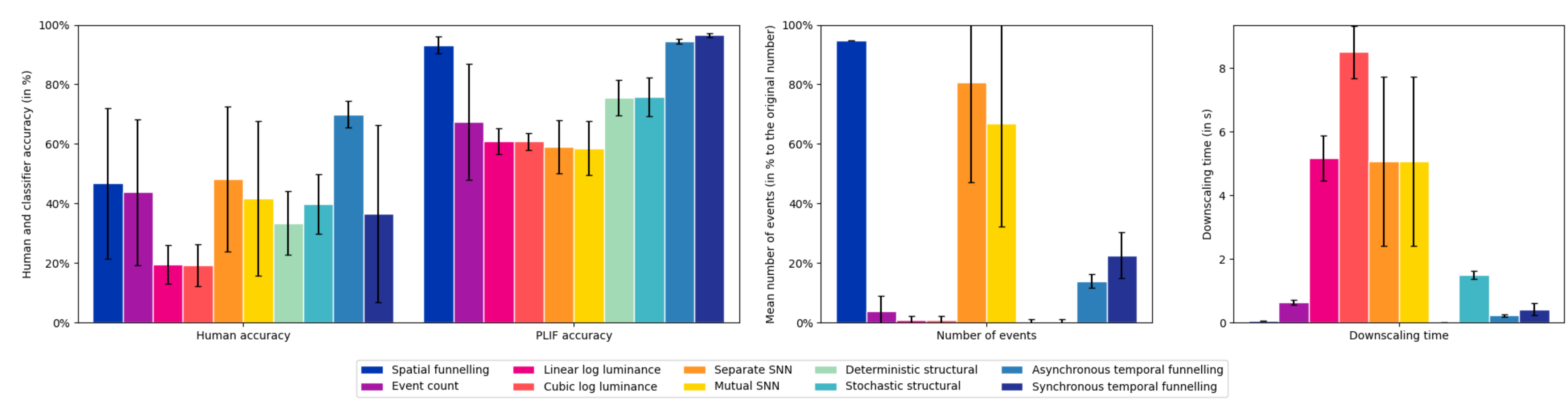
Choice between four gestures, displayed during 10s and selected in DVS 128 Gesture dataset [Amir, 2017]



Experimental results



Top. Human accuracy and rate of "unknown" answers to event data downsampled spatially (left) and temporally (right)
 Bottom. Ratio of the human accuracy to the PLIF classifier accuracy [Fang, 2021]



Global comparison between methods according to human and machine performance, number of events and runtime