



HAL
open science

The Transcriptome Landscape of the In Vitro Human Airway Epithelium Response to SARS-CoV-2

Said Assou, Engi Ahmed, Lisa Morichon, Amel Nasri, Florent Foisset, Carine Bourdais, Nathalie Gros, Sonia Tieo, Aurelie Petit, Isabelle Vachier, et al.

► **To cite this version:**

Said Assou, Engi Ahmed, Lisa Morichon, Amel Nasri, Florent Foisset, et al.. The Transcriptome Landscape of the In Vitro Human Airway Epithelium Response to SARS-CoV-2. *International Journal of Molecular Sciences*, 2023, 24 (15), pp.12017. 10.3390/ijms241512017 . hal-04180636

HAL Id: hal-04180636

<https://hal.science/hal-04180636>

Submitted on 16 Aug 2023

HAL is a multi-disciplinary open access archive for the deposit and dissemination of scientific research documents, whether they are published or not. The documents may come from teaching and research institutions in France or abroad, or from public or private research centers.

L'archive ouverte pluridisciplinaire **HAL**, est destinée au dépôt et à la diffusion de documents scientifiques de niveau recherche, publiés ou non, émanant des établissements d'enseignement et de recherche français ou étrangers, des laboratoires publics ou privés.

The Transcriptome Landscape of the In Vitro Human Airway Epithelium Response to SARS-CoV-2

Said Assou 1,*,† , Engi Ahmed 1,2,3 , Lisa Morichon 1,4 , Amel Nasri 1 , Florent Foisset 1 , Carine Bourdais 1 , Nathalie Gros 4, Sonia Tio 5, Aurelie Petit 2,3 , Isabelle Vachier 2,3 , Delphine Muriaux 4,6, Arnaud Bourdin 2,3,*,† and John De Vos 1,7,†

1 IRMB, University of Montpellier, INSERM, CHU Montpellier, 34295 Montpellier, France; noussa31@gmail.com (E.A.); lisa.morichon@cemipai.cnrs.fr (L.M.); amel.nasri@inserm.fr (A.N.); florent.foisset@inserm.fr (F.F.); carine.bourdais@inserm.fr (C.B.); john.devos@inserm.fr (J.D.V.)

2 Department of Respiratory Diseases, CHU Montpellier, Arnaud de Villeneuve Hospital, INSERM, 34000 Montpellier, France; aurelie.fort@inserm.fr (A.P.); isabelle.vachier@medbiomed.fr (I.V.)

3 PhyMedExp, University of Montpellier, INSERM U1046, CNRS UMR 9214, 34090 Montpellier, France

4 CEMIPAI, Université de Montpellier, CNRS UAR3725, 34090 Montpellier, France; nathalie.gros@cemipai.cnrs.fr (N.G.); delphine.muriaux@cemipai.cnrs.fr (D.M.)

5 CEFE, University of Montpellier, CNRS, EPHE, IRD, 34090 Montpellier, France; sonia.tio@cefe.cnrs.fr

6 IRIM, Université de Montpellier, CNRS UMR9004, 34090 Montpellier, France

7 Department of Cell and Tissue Engineering, University of Montpellier, CHU Montpellier, 34090 Montpellier, France

* **Correspondence:** said.assou@inserm.fr (S.A.); a-bourdin@chu-montpellier.fr (A.B.); Fax: +33-(0)4-67-33-57-23 (S.A.)

† **Co-senior authors.**

Keywords:

SARS-CoV-2 signatures; airway in vitro models; iPS cells; transcriptomic analysis

Abstract:

Airway–liquid interface cultures of primary epithelial cells and of induced pluripotent stem-cell-derived airway epithelial cells (ALI and iALI, respectively) are physiologically relevant models for respiratory virus infection studies because they can mimic the *in vivo* human bronchial epithelium. Here, we investigated gene expression profiles in human airway cultures (ALI and iALI models), infected or not with severe acute respiratory syndrome coronavirus 2 (SARS-CoV-2), using our own and publicly available bulk and single-cell transcriptome datasets. SARS-CoV-2 infection significantly increased the expression of interferon-stimulated genes (IFI44, IFIT1, IFIT3, IFI35, IRF9, MX1, OAS1, OAS3 and ISG15) and inflammatory genes (NFKBIA, CSF1, FOSL1, IL32 and CXCL10) by day 4 post-infection, indicating activation of the interferon and immune responses to the virus. Extracellular matrix genes (ITGB6, ITGB1 and GJA1) were also altered in infected cells. Single-cell RNA sequencing data revealed that SARS-CoV-2 infection damaged the respiratory epithelium, particularly mature ciliated cells. The expression of genes encoding intercellular communication and adhesion proteins was also deregulated, suggesting a mechanism to promote shedding of infected epithelial cells. These data demonstrate that ALI/iALI models help to explain the airway epithelium response to SARS-CoV-2 infection and are a key tool for developing COVID-19 treatments.

--

1. Introduction

The rapid spread of severe acute respiratory syndrome coronavirus 2 (SARS-CoV-2) in humans has posed a serious global health threat. Coronaviruses are part of a large family of viruses that cause illnesses ranging from common colds to severe respiratory diseases, including COVID-19 caused by SARS-CoV-2. SARS-CoV-2 is a single positive-stranded RNA enveloped virus that is capable of replicating in epithelial cells [1]. Due to the long and short-term effects of COVID-19 on human health and the need to limit the emergence of novel virus variants, significant efforts have been dedicated to help understand the viral infection mechanisms and to develop antiviral drugs using physiologically relevant *in vitro* culture models that mimic *in vivo* phenotypes. Human airway epithelial cells in culture are traditionally used for modeling respiratory diseases [2]. These cells can be obtained from lung tissue biopsies and are cultured as primary airway epithelial cells in air–liquid interface (ALI) systems that support epithelial cell differentiation and mimic key aspects of the mucosal epithelium [3]. They can also be derived by differentiation of induced pluripotent stem cells (iPSCs) in ALI systems (i.e., iALI) [4–7]. In both ALI and iALI systems, epithelial cells are cultured on a permeable membrane with the medium in the basal chamber and the epithelium exposed to air at the apical side of the membrane. In this system, cells are in contact with air and can be induced to differentiate into a functional pseudostratified epithelium. Several studies confirmed that ALI culture transcriptomic profiles are very similar to those of the *in vivo* airway epithelium obtained via bronchial brushing or biopsy [8,9]. ALI and iALI models can be infected by viruses and have been used to model various mechanisms of viral pathogenesis [10,11]. SARS-CoV-2 can replicate in both models [1,12], and interferon can

inhibit virus infection. This demonstrated interferon therapeutic potential for COVID-19 treatments and the usefulness of these models as a high-throughput screening tool [13,14]. Additionally, ALI and iALI cultures from patients with respiratory diseases (e.g., chronic obstructive pulmonary disease) recapitulate some in vivo disease characteristics and are used to assess the impact of smoke exposure on viral infection [10,15,16]. Therefore, ALI and iALI cultures could help us to understand SARS-CoV-2 effects in the bronchial epithelium by analyzing the transcriptomic changes upon infection. ALI models are very helpful in identifying the key initiating steps of viral injury and innate epithelial cell defense that may or may not lead to cell infection and replication. Increasing the number of models and donors will improve the robustness of the identified pathways by reducing the inter-individual heterogeneity in viral susceptibility.

Various omic-based studies, including in vivo (human samples) and in vitro (model systems) transcriptome profiling studies (bulk RNA sequencing), have highlighted the molecular changes induced by SARS-CoV-2 infection [17–19]. The recent advent of single-cell RNA sequencing (scRNA-seq) provides a precious approach to carefully analyze gene expression and cell composition. For instance, scRNA-seq has been used to identify the cells in the human respiratory system with the highest expression of transmembrane receptors for SARS-CoV-2 [20] and to show that in ALI cultures of nasal epithelial cells, ciliated and goblet/secretory cells express progressive SARS-CoV-2 entry factors. Moreover, in infected human bronchial epithelial-derived ALI cultures, scRNA-seq [21] revealed that ciliated cells are a major SARS-CoV-2 target.

In the present study, we analyzed bulk and single-cell RNA-seq datasets to provide a detailed picture of the gene expression changes in ALI and iALI models following SARS-CoV-2 infection. This analysis highlighted the molecular mechanisms involved in the induction of the hyper-inflammatory state and innate immune response, including interferon signaling, chemokines and extracellular matrix (ECM) and identified potential regulatory microRNAs (miRNAs) for therapeutic interventions.

2. Results

2.1. Cellular Landscapes of Non-Infected Human Lung Epithelium Models

Non-infected HBEC in ALI culture and iPSC-derived epithelial-like cells in iALI culture were analyzed via single-cell RNA sequencing (scRNA-seq) to generate a comprehensive portrait of the cell populations present in these models. Single-cell transcriptome data were also obtained from the lung epithelium collected through bronchial biopsy or brushing (Figure 1A). Analysis of these scRNA-seq data from these three models (biopsy/brushing bronchial cells, ALI and iALI cultures) (Figure 1B) showed that most epithelial cell markers, such as SCGB1A1/CC10 (secretoglobin family 1A member 1; secretory cells), TP63 (tumor protein p63; basal cells) and FOXJ1 (forkhead box J1; multi-ciliated cells), were present in the three sample types. This suggested that our non-infected ALI and iALI models recapitulate the human airway and can be used for infection studies. Comparison of the single-cell landscapes indicated that unlike the biopsy/brushing and ALI models, the iALI model expressed ASCL1, a marker of neuroendocrine cells, but not FOXI1 (ionocyte marker), and all models express POU2F3 (tuft cell marker). In addition, immune cells were an important cell fraction in biopsy/brushing samples (Figure 1C) but were absent in the ALI and iALI models. This major difference may help to (i) understand the epithelial-intrinsic innate inflammatory response to

SARS-CoV-2 infection; (ii) identify the key epithelial target cells; and (iii) compare the molecular mechanisms triggered in the absence (iALI and ALI) and presence (biopsy-brushing samples) of immune cells.

2.2. Cell-Specific Expression of Single-Stranded RNA Virus Receptors in Non-Infected Human Lung Epithelium Models

Expression of virus receptors is a key factor for virus infection and transmission of all viruses. Analysis of scRNA-seq data from the three non-infected lung epithelium models showed that CDHR3 (encoding cadherin-related family member 3, the entry receptor for rhinovirus C) [22] was specifically expressed in ciliated cells and CD55 (Coxsackievirus B1 receptor) [22] in secretory cells (Figure 1D). ACE2 (SARS-CoV-2 receptor) was expressed by ciliated, secretory and basal cells. Moreover, in biopsy/brushing samples, ACE2+ cells were overrepresented among all epithelial cell types compared with immune cells, including macrophage, endothelial and dendritic cells (Figure 1D). This is in line with a recent study reporting the absence of viral transcripts in bronchoalveolar fluid and peripheral blood mononuclear cell samples collected from patients with COVID-19 [23]. Collectively, scRNAseq data analysis of the three cell culture models showed expression of CDHR3, CD55 and ACE2 receptors in ciliated, secretory and basal cells, suggesting the possibility of modeling ssRNA virus infection, including SARS-CoV-2, in the airway epithelium in vitro.

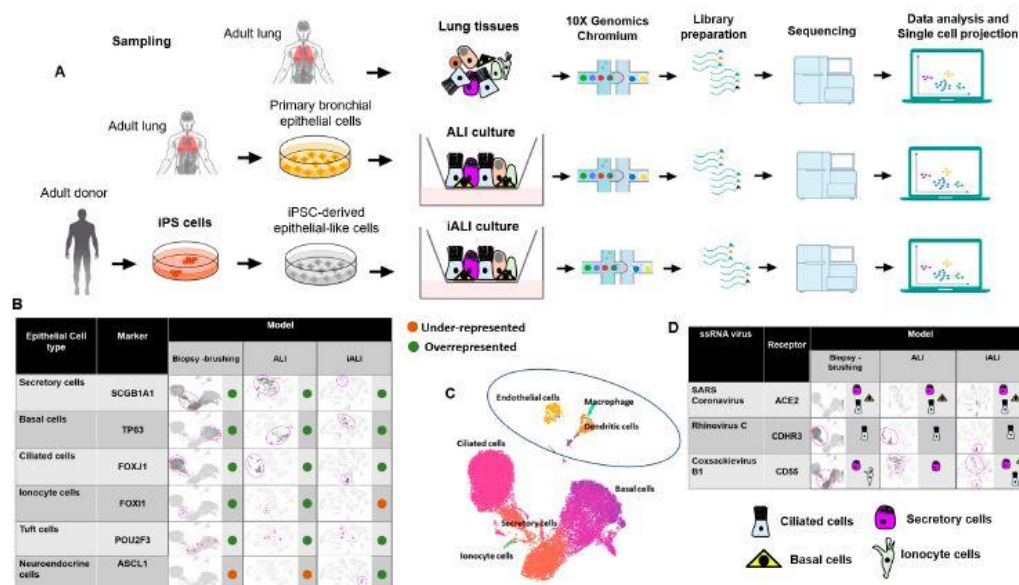


Figure 1. Distribution of the different airway epithelial cell types in the three lung tissue models. (A) Schematic representation of the scRNA-seq experimental workflow: airway epithelium sources (biopsy/brushing-derived cells, ALI culture of primary bronchial epithelial cells and iALI culture of iPSC-derived epithelial-like cells), generation of scRNA-seq libraries and sequencing, computational analysis to identify cell types. The brushing/biopsy epithelium scRNA-seq data were from [24]. The ALI and iALI scRNA-seq data were generated in our laboratory (see Methods); (B) contribution of each cell type in the three models. UMAP and tSNE were used to show the contribution of SCGB1A1+, TP63+, FOXJ1+, FOXI1, POU2F3+ and ASCL1+ cells (dark gray). (C) UMAP projection of the different cell types. The feature plots display the subset of airway epithelial cells obtained from biopsy/brushing of healthy donors [24]. (D) Maps of the expression of ssRNA virus receptors (rhinovirus C receptor (CDHR3), Coxsackievirus B1 receptor (CD55) and SARS-CoV-2 receptor (ACE2)) in single cells from the three models. UMAP and tSNE were used to show the cell types that express the ACE2, CDHR3 and CD55 receptors.

2.3. Changes Induced by SARS-CoV-2 Infection in the ALI Model

A recent bulk RNA-seq dataset [18] was used to compare the gene expression profiles of the infected and non-infected human bronchial epithelium in order to identify the “SARS-CoV-2 bulk RNA-seq signature” induced by SARS-CoV-2 infection at higher MOI (2) in the ALI model (Supplementary Table S2). GO biological process and molecular function analyses of this “SARS-CoV-2 bulk RNA-seq signature” showed significant overexpression of genes implicated in the immune response, cytokines and chemokine activity (Figure 2A). The GO cellular component enrichment analysis showed that many differentially expressed genes were related to ECM and ECM regulators (Figure 2A). GSEA confirmed the significant upregulation of the interferon and inflammatory pathways (Figure 2B). Heatmaps revealed that the core transcriptional response included genes implicated in “immune cell trafficking”, “inflammatory response”, “cellular movement”, “inflammatory response” and “cell-to-cell signaling and interaction” (Figure 2C), which is consistent with the biological processes and molecular functions highlighted above. The top categories, ranked in accordance with their $-\log(p\text{-value})$, are shown in Supplementary Table S3. In total, 146 enriched canonical pathways were identified (Supplementary Table S4). The interferon signaling pathway was ranked first, with a $-\log(p\text{-value})$ of 14.1. Many genes belonging to the interferon machinery implicated in the antiviral response and viral replication were identified (Figure 2D), such as interferon-induced genes (IFI27, IFI35, IFI44, IFI44L, IFIH1, IFIT1, IFIT3, IFITM1, IFITM3), interferon regulatory factors (IRF7 and IRF9), interferon-stimulated genes (ISG15 and ISG20), MX dynamin-like GTPases (MX1 and MX2), oligoadenylate synthetases (OAS1, OAS2 and OAS3) and the master suppressor of cytokine signaling (SOCS3). With a Z-score > 2 as a threshold of significant activation, the following signaling pathways were identified as activated: ‘IL17 signaling’ (Z-score = 5.099), ‘HMGB1 signaling’ (Z-score = 4), ‘TREM1 signaling’ (Z-score = 3.742), ‘Toll-like Receptor signaling’ (Z-score = 2.53), ‘IL-8 signaling’ (Z-score = 4.123), ‘iNOS signaling’ (Z-score = 3.162), ‘IL-6 signaling’ (Z-score = 3.37), ‘TNFR1 signaling’ (Z-score = 2.121), ‘IL-1 signaling’ (Z-score = 3) and ‘PI3K/AKT signaling’ (Z-score = 2.333). Conversely, some of the enriched signaling pathways had Z-scores lower than -2, such as ‘inhibition of matrix metalloproteases’ (Z-score = -2), ‘PPAR signaling’ (Z-score = -3.606) and ‘erythropoietin signaling pathway’ (Z-score = -2.524). Concerning upstream regulators (Supplementary Figure S1, Supplementary Table S5), the highest ranked regulatory effects with consistency scores up to 4.8 strongly suggested that the upstream regulators TNF, IL1A and F2 may be responsible for the gene expression changes in the SARS-CoV-2 bulk RNA-seq signature. IPA analysis predicted that these upstream regulators are involved in chemotaxis, invasion and cell movement, mainly through induction of their targets, including many genes associated with the innate immune response (IL1B, NFKBIA, CXCL1, NOD2, PLAUR, C3, ITGB2, S100A8, PLAU, S100A9, IL1A, TNF), cytokine and chemokine activities (CCL20, CXCL2, CXCL3, CXCL5, CXCL6, CXCL8, CXCL10, IL6, IL8, IL32, IL33, CSF3, CSF2, CSF1), and genes implicated in ECM degradation, such as matrix metalloproteases (MMP13, MMP9, MMP1). These metalloproteases are connected to pro-inflammatory chemokines and play an operative role in ECM degradation during inflammation that can be triggered by virus infection. Our data highlighted and confirmed that matrix metalloproteinases play key roles in viral infection and progression [25] through airway remodeling (i.e., loss of the epithelium barrier integrity [26] and elastin degradation in the ECM [27]).

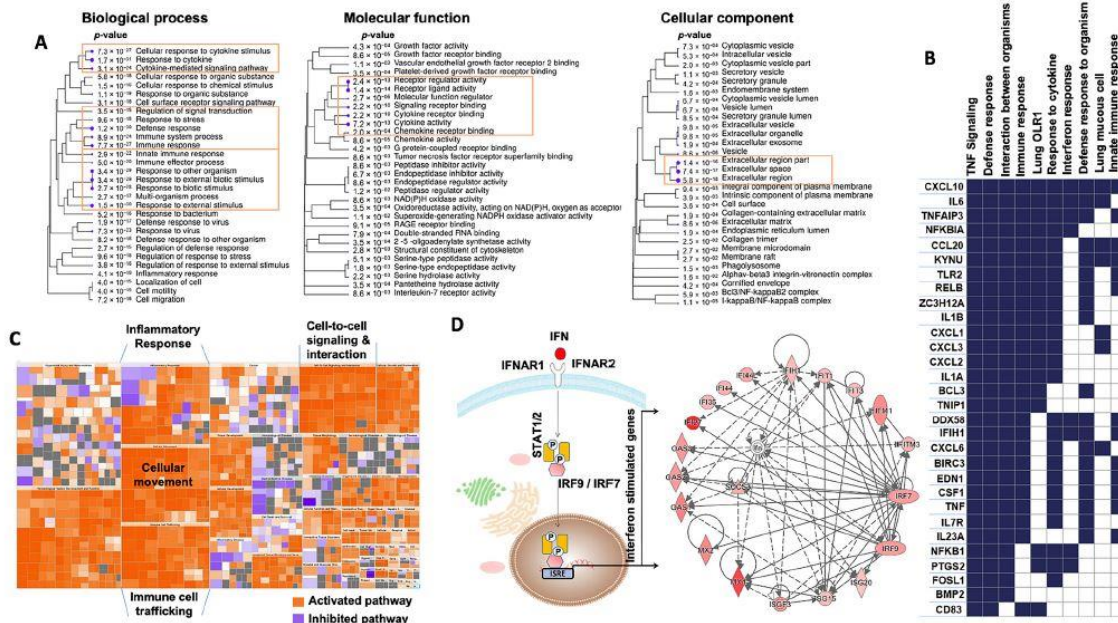


Figure 2. Analysis of GO terms enriched in the unique bulk RNA-seq signature of the ALI model at day 1 post-infection by SARS-CoV-2. **(A)** Pathway enrichment analyses were performed with human gene names. The size of the blue dots corresponds to the enrichment (FDR), and bigger dots indicate more significant p-values. The biological process, molecular function and cellular component categories revealed the high enrichment of immune response and cytokine/chemokine activities upon SARS-CoV-2 infection. **(B)** GSEA performed using the unique bulk RNA-seq signature upon SARS-CoV-2 infection. The heat map shows the (clustered) genes in the leading-edge subsets and the dynamic expression of genes involved in immune response, interferon response, defense response, TNF signaling and response to cytokines. **(C)** Enrichment heat map (IPA) showing the dynamic activity of canonical pathways after SARS-CoV-2 infection. Each colored rectangle is a biological function, and the color range indicates its activation state (orange for an activated pathway with Z-score > 2 and blue for an inhibited pathway with Z-score < -2). The pathways were classified into different types according to the IPA database. **(D)** The network shows the interactions of interferon (IFN)-stimulated genes. Nodes shaded in pink represent protein-coding genes that are upregulated in the ALI model upon SARS-CoV-2 infection. Labels in nodes and edges (lines) illustrate the nature of the relationship between genes and their functions. A dotted line represents an indirect interaction and a solid line a direct interaction. IPA, Ingenuity Pathway Analysis. GO, Gene Ontology.

2.4. Conserved Expression of the Epithelial Cell Response to SARS-CoV-2 Infection in the iALI Model

Then, the bulk RNA-sequencing datasets of iPSC-derived alveolar epithelial type 2-like cells (iAT2) infected by SARS-CoV-2 and mock-infected [14] at 1 and 4 dpi were analyzed to determine whether the SARS-CoV-2 bulk RNA-seq signature observed in the ALI model was present also in the iALI model. Analysis of the temporal distribution of RNA-seq reads allows for identifying four major gene groups (Figure 3A): (a) genes that were upregulated early (at 1 dpi) and the expression of which gradually increased from 1 to 4 dpi (NFKB1A, CSF1, IL32 and FOSL1); (b) genes that were upregulated early and the expression of which was not changed at 4 dpi (IL23A, CXCL10, CXCL20 and PLAUR); (c) genes that were upregulated at 1 dpi and were then downregulated at 4 dpi (CXCL3, CXCL5, CXCL1 and LOX); and (d) genes that were upregulated only at 4 dpi (MMP9 and MMP13). In addition, and like in the ALI model, in the COVID-19 iALI model, the interferon response was activated, as indicated by the upregulation of genes encoding interferon-induced proteins and interferon regulatory factors (Figure 3B). This suggests that the ALI and iALI models share common interferon response regulation features. Conversely, the expression kinetics of ECM-related genes

showed that some genes (ITGB6, ITGB1, GJA1, VIM and the ECM regulator PLOD2, which encode proteins of the host cell cytoskeleton structure) were progressively downregulated during SARS-CoV-2 infection in the iALI model (Figure 3C). This indicated that the ECM and adhesion pathways are affected during cell-to-cell SARS-CoV-2 transmission. Moreover, the expression of EpCAM (epithelial cell adhesion molecule), an epithelial cell surface marker, progressively decreased, and that of the stromal cell marker COL1A1 progressively increased (Figure 3D), suggesting epithelial mesenchymal transition.

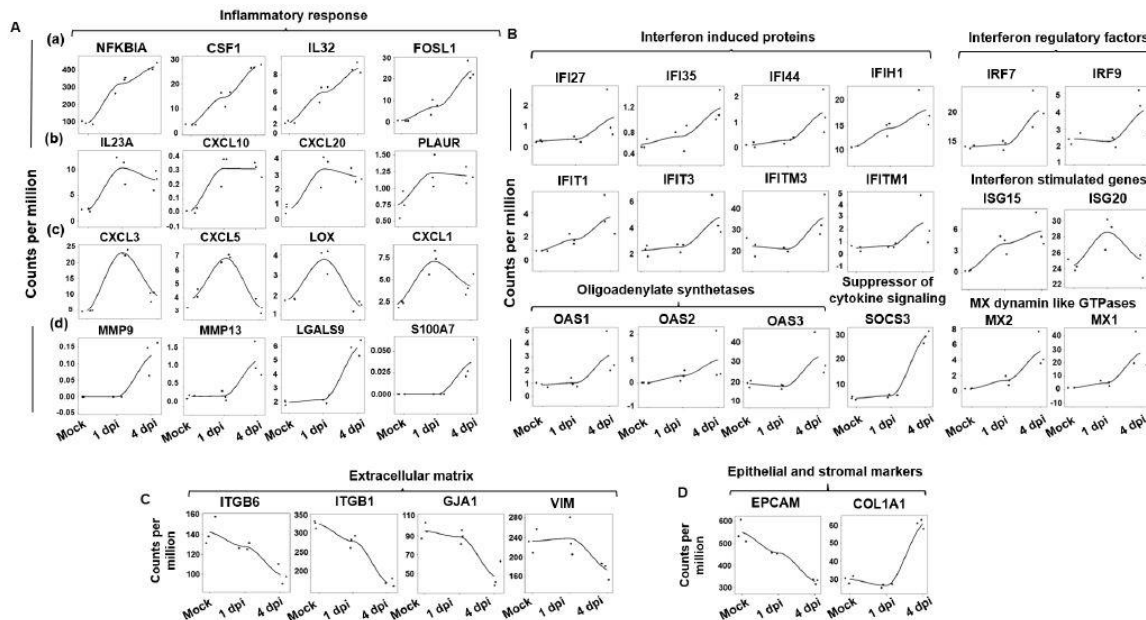


Figure 3. Dynamic gene expression changes in the iALI model upon SARS-CoV-2 infection. Expression levels of (A) inflammatory cytokines/chemokines, including (a) genes that were upregulated (b) genes that were upregulated early, the expression of which remained constant between 1 and 4 dpi; (c) genes that were upregulated specifically at 1 dpi and were then downregulated at 4 dpi; and (d) genes that became upregulated at 4 dpi. Expression of genes implicated in the (B) interferon response, (C) extracellular matrix and (D) epithelial/stromal gene upon infection. Normalized expression levels (counts per million reads) were quantified via RNA-seq using data from [14] (human iPSC-derived AT2 cells infected or not with SARS-CoV-2).

2.5. Experimental Validation of the Epithelial Cell Response to SARS-CoV-2 Infection in the iALI Model

To gain insight into the molecular basis of SARS-CoV-2 infection in the iALI model, the iALI bronchial epithelium was incubated with SARS-CoV-2 Delta (21A—Delta—B.1.617.2) at low MOI (0.05) to let the infection take hold for 4 days, and then the expression of interferon-induced genes and regulatory factors, viral entry genes and ECM genes was investigated. Viral RNA quantification confirmed infection of iALI cultures. The virus was detected at the apical side at 1 dpi and also at 4 dpi (Figure 4A). Tissue integrity was controlled through transepithelial electrical resistance (TEER) measurements (Figure 4B). No difference between infected and non-infected (control) conditions was observed. Immunofluorescence analysis of infected iALI cultures showed that SARS-CoV-2 membrane M protein colocalized with tubulin β 4a (TubIV). This confirmed the culture infection and suggested a preferential infection of ciliated cells (Figure 4C). In non-infected cells, iALI ciliated cells were more homogeneous and intact. Moreover, RT-qPCR analysis of infected iALI cultures showed activation of the interferon signaling pathways at 1 dpi and 4 dpi. In the non-infected control, gene expression levels at day 0 and day 4 were not different (Figure S3). Interferon-induced proteins (IFI44, IFIT1, IFIT3, IFI35), interferon regulatory factors (IRF9, MX1, ISG15), oligoadenylate synthetases

(OAS1, OAS3) and chemokine ligand (CXCL10) were upregulated at 4 dpi (Figure 4D). Conversely, viral infection did not alter the expression of genes encoding adhesion molecules, such as GJA1 and ITGB1, unlike what was observed upon infection at higher MOI (0.5) (Figure 3C). In agreement with this observation, TEER of our own iALI bronchial model was comparable in non-infected and infected (at low MOI = 0.05) cultures from 1 to 4 dpi, indicating that at this infection level, epithelium integrity was not disrupted (Figure 4B). Altogether, these data show that the iALI model is a trustworthy and sensitive model for SARS-CoV-2 infection.

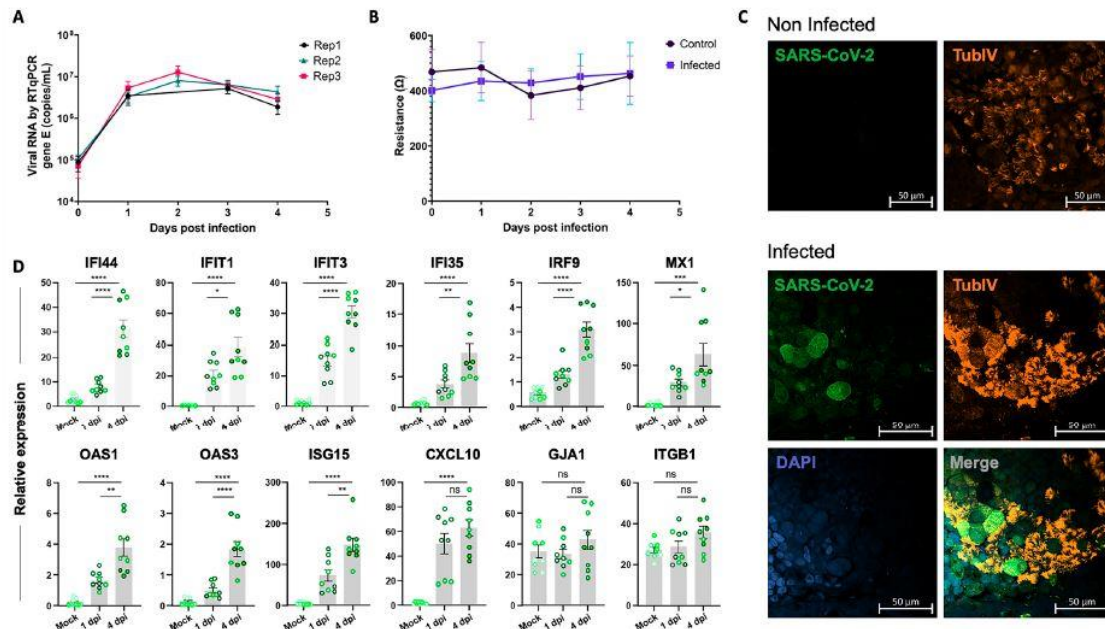


Figure 4. Validation of SARS-CoV-2 infection in the iALI model. (A) iALI cultures were infected with SARS-CoV-2 Delta with MOI (multiplicity of cellular infection) = 0.05. Then, viral RNA was extracted from apical wash samples, and viral gene E was quantified via RT-qPCR (copies/mL). Data are from three independent experiments (Replicate-1, replicate-2, replicate-3) using three different iALI cultures. The standard deviation shows the result variability. (B) Transepithelial electric resistance (TEER) measurements of infected iALI cultures and controls. (C) Non-infected and SARS-CoV-2 Delta (MOI = 0.05)-infected iALI cultures were stained with anti-SARS-CoV-2 M protein (viral membrane protein, green), anti- β -tubulin (ciliated cell marker, orange) and anti-P63 (basal cell marker, red) antibodies. Nuclei were counterstained with DAPI (blue). SARS-CoV-2 was identified on the motile cilia. Scale bar: 20 μ m. (D) RT-qPCR analysis of the expression of genes encoding inflammatory and interferon-related factors in iALI cultures infected with SARS-CoV-2 (MOI 0.05) at 1 dpi and 4 dpi. Data are the mean \pm SEM of three independent experiments with three technical replicates/each (9 samples); * $p < 0.05$, ** $p < 0.01$, *** $p < 0.001$, **** $p < 0.0001$, ns: not significant (Student's t test). MOI: multiplicity of cellular infection.

2.6. Epithelial Cell Communication Networks in Response to SARS-CoV-2 Infection

ALI cultures include different cell types connected by tight and adherens junctions. Communication between epithelial cells occurs through the release of a variety of small molecules, including cytokines and chemokines. To investigate the impact of SARS-CoV-2 infection on ligand/receptor interaction between the different airway cell types, scRNAseq data from HBEC ALI cultures, infected or not with SARS-CoV-2 (MOI 0.01), were analyzed using the SingleCellSignalR method. Comparison of the summary chord diagram indicated a decrease in the number of paracrine interactions between the main epithelial cell types two dpi (Figure 5A), which strongly suggests an impact of SARS-CoV2 infection intercellular communications. For instance, expression of receptor tyrosine kinase (*RET*) and its ligand artemin (*ARTN*), one of the most pre-eminent interacting pairs between neuroendocrine cells

and other epithelial cells, was strongly decreased at 3 dpi (Figure 5B). This suggests that neuroendocrine cells are particularly sensitive to environmental stimuli (e.g., viral infection) and act as a rheostat to orchestrate ALI culture

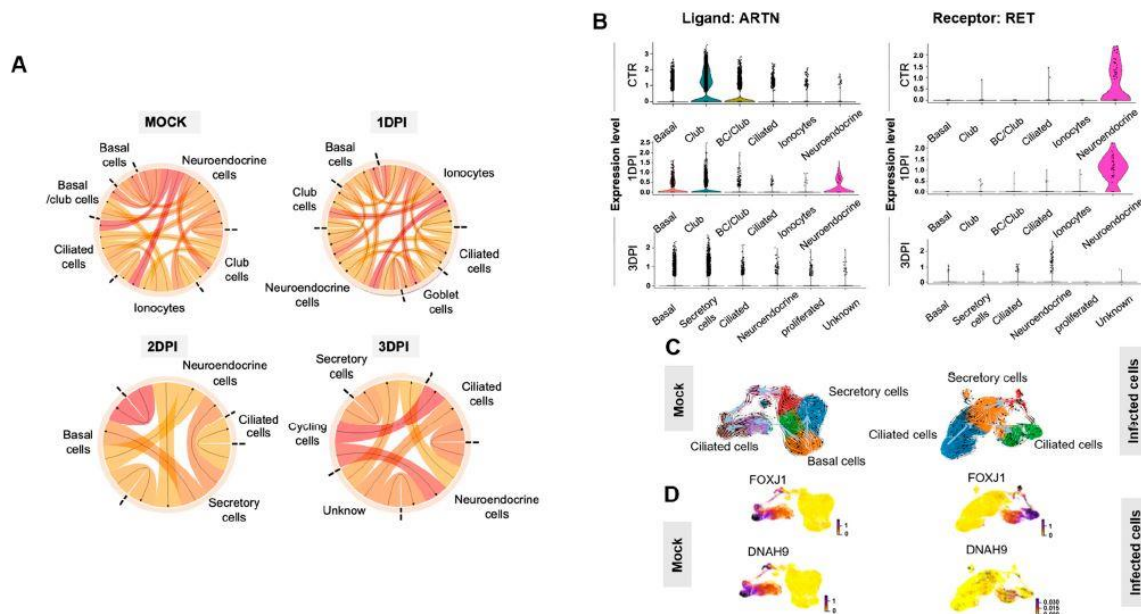


Figure 5. Paracrine interactions and single-cell trajectories in SARS-CoV-2-infected ALI cultures. **(A)** Circos plot showing potential interactions (ligand receptors) between various epithelial cell types in non-infected (Mock) and SARS-CoV-2-infected ALI cultures at 1, 2 and 3 dpi. The smallest number of paracrine interactions was observed in infected cultures at 2 and 3 dpi. Arrows point to the receptors. **(B)** Violin plots showing the expression of the ligand ARTN and its receptor RET in the various airway cell types identified by scRNA-seq before (Mock) and after SARS-CoV-2 infection (1 and 3 dpi). **(C)** The velocity field revealed two distinct tracks used by basal cells to form ciliated cells in non-infected ALI cultures (mock) but not in SARS-CoV-2-infected cultures (2 dpi). **(D)** Left, gene expression of known markers of premature (FOXJ1+) and mature ciliated cells (DNAH9+) is visualized on the t-SNE plot in the mock sample. Right, the t-SNE plot shows the absence of mature ciliated cells (DNAH9+) at 2 dpi.

2.7. RNA Velocity Reveals Discrepancies between Non-Infected and Infected Epithelium in the ALI Model

To further characterize the ALI model transcriptional dynamics in response to virus infection, the single-cell RNA velocity was measured in SARS-CoV-2-infected and –noninfected epithelial ALI cultures using a dynamic model of the transcriptional state based on unspliced and spliced transcript counts [28]. Cell trajectory analysis revealed that non-infected ALI epithelial cells displayed two distinct bifurcation points through two different epithelial

transition states. The first bifurcation point included basal cells (TP63⁻/KRT5⁺) that directly differentiate into ciliated cells, and the second bifurcation point mainly included basal cells (TP63⁺/KRT5⁺) that preferentially differentiate into secretory cells and then into ciliated cells. This placed secretory cells in an intermediate position between basal cells and mature ciliated cells (DNAH9⁺) (Figure 5C). Velocity ordering analysis in infected cells revealed a change in the ciliated cell differentiation trajectory. Indeed, basal cells were all oriented to differentiate into ciliated cells through a secretory cell state. Moreover, DNAH9⁺-infected cell mapping within ALI epithelial cells revealed that ciliated cells were more susceptible to infection compared with other cell types, like DNAH9⁺ mature ciliated cells that are preferentially eliminated during SARS-CoV-2 infection (Figure 5D).

2.8. Potential miRNA Regulators of the Epithelial Cell Intrinsic Response to SARS-CoV-2 Infection

GenGo Metacore software was then used to identify miRNAs that regulate the epithelial cell response genes after SARS-CoV-2 infection in the ALI and iALI models (i.e., potential antiviral targets). This analysis identified 167 miRNAs that regulate the key epithelial cell intrinsic genes deregulated upon viral infection (Figure 3A,B). Among these miRNAs, 44 were regulators of interferon response genes and 123 were regulated inflammatory response genes (complete list of miRNAs in Supplementary Table S6). More than 54% of the interferon gene targets were regulated by more than one miRNA. For instance, SOCS3 and MX2 were targeted by 24 and 5 miRNAs, respectively (Figure 6A). The inflammatory genes regulated by the highest number of miRNAs were MMP9 (n = 29 miRNAs), NFKBIA (n = 19), MMP13 (n = 19), CSF1 (n = 12), FOSL1 (n = 11) and LOX (n = 11) (Figure 6B). MIR34a was identified as a potential regulator of MMP9, NFKBIA, FOSL1 and CXCL10, whereas MIR203 and MIR19 were common regulators of NFKBIA, MMP13 and SOCS3. MIR138-5p and MIR-326-3p are validated regulators of ISG15 and ISG20. MIR650, MIR541-3p and MIR302d-3p regulated several interferon-stimulated genes, including MX1, MX2, IRF7 and IRF9. CSF1 and LOX were targets of MIR130a and MIR29, respectively. These miRNAs can attenuate the inflammatory response and inhibit key coagulation cascade factors, thus preventing inflammatory epithelium damage. Moreover, 45 miRNAs were differentially expressed between SARS-CoV-2-infected and control lung-derived epithelial cells from an independent study (GSE148729) [29]. Among them, 17 miRNAs were significantly upregulated after 24 h of infection, and 28 were downregulated. These microRNAs differentially expressed in lung epithelial cells following SARS-CoV-2 infection were compared to the list of 129 microRNAs identified with GenGo Metacore using Venn diagrams. Among the 17 upregulated miRNAs (published datasets), 5 modulated the epithelial response to SARS-CoV-2 infection in both ALI and iALI models (MIR155-5p, MIR483-3p, MIR483-5p, MIR125b-5p and MIR4284). Conversely, downregulated miRNAs were not present on our list.

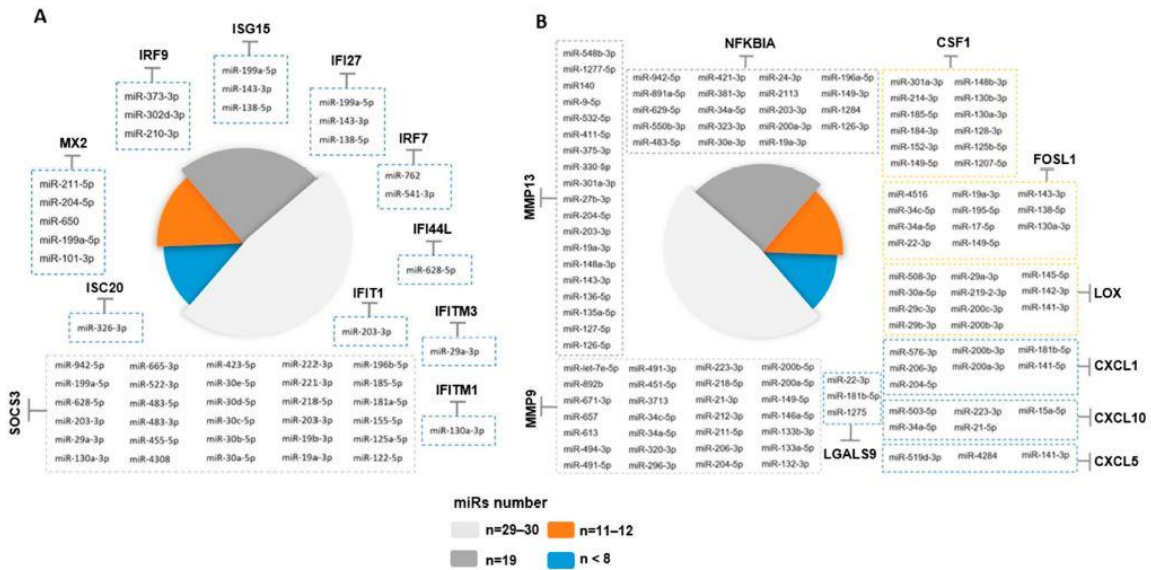


Figure 6. Identification of miRNA targets as potential COVID-19 therapeutics. Schematic representation of potential miRNAs that target some genes implicated in the interferon and inflammatory responses upon SARS-CoV-2 infection of ALI cultures. Only the miRNAs experimentally validated are represented. A line with a bar indicates “microRNA-targeting”.

3. Discussion

The human large airways are lined by an epithelium with three abundant specialized cell types (basal, secretory and multi-ciliated cells) and some rare cell types (neuroendocrine cells, tuft cells and ionocytes) [30–32], on a stroma composed of mesenchymal cells, smooth muscle cells and immune cells [33]. Primary HBECs cultured in ALI conditions can be used to study airways in vitro. More recently, our group and others have generated a functional airway epithelium from human iPSCs (iALI models) with a marked similarity to the airway epithelium in vivo [4,6,34–36]. As expected, scRNA-seq analysis of ALI and iALI models showed that immune cells, which are found in biopsy-/brushing-derived primary cultures, were absent in these models. In contrast, the stromal compartment is uniquely present in the iALI model, contributing to the faithful replication of the complex interplay between the bronchial epithelium and submucosa, which could prove particularly valuable in the context of viral infection. Similarly, neuroendocrine cells were mostly identified in the iALI model, compared with the ALI model. Our analysis also characterized rare cell types, such as ionocytes, that strongly express FOXI1 and ASCL3 [31,37].

SARS-CoV-2 infection in ALI and iALI models induces virus-induced epithelial disruption, loss of mature ciliated cells and triggers intrinsic immune responses. Despite the differences in terms of cell composition, the ALI and iALI models exhibit relevant proportions of airway cell types, express SARS-CoV-2, rhinovirus C and Coxsackievirus B1 receptors (ACE2, CDHR3, CD55) and have been used to model various mechanisms of SARS-CoV-2 pathogenesis [38]. These models provide a suitable and reliable platform for researchers to study SARS-CoV-2 pathogenesis during infection.

In this study, we analyzed the bulk and single-cell transcriptomes of ALI and iALI cultures infected with SARS-CoV-2. This highlighted the emergence of pro-inflammatory and interferon signatures, in which epithelial cells upregulated the expression of several cytokines,

chemokines, interferon and downregulated ECM-related genes in response to SARS-CoV-2 at different times after infection. Most of these genes play essential roles in virus control and also in disease development. For instance, many chemokines (CCL2, CCL3, CCL20, CXCL1, CXCL3, CXCL10, IL-8) associated with inflammatory responses were expressed in the ALI and iALI models. CCL2, CXCL10 and IL-8 are associated with airway inflammation, and high serum levels of these chemokines were found in patients with severe SARS [39]. CCL3 is also involved in viral infections [40]. Our detailed analysis of the transcriptional response to SARS-CoV-2 infection showed that ALI and iALI cultures produced an unbalanced cytokine response, with preferential upregulation of genes encoding cytokines (for instance IL-6, IL-1 β and IL-33) that are mainly implicated in the defense against extracellular aggression. Several studies showed that IL-6 serum levels are increased in patients with COVID-19 [41]. IL-6 is involved in acute inflammation due to its implication in controlling the acute phase response [42]. IL-6 production is induced by TNF- α and IL-1 β [43]. In animal models of SARS-CoV-2 infection, TNF activity neutralization provides protection against SARS-CoV-2 morbidity and mortality [44]. A large number of data showed the role of interferons in SARS-CoV-2 infection. Interferons exercise their biological functions by regulating the expression of interferon-stimulated genes (ISGs). ISG upregulation has been described in various cells from patients with severe COVID-19 [45,46]. Here, we found that infection with SARS-CoV-2 induced a strong interferon response in ALI and iALI cultures, marked by a high expression of ISG15 (key factor in the innate immune response to SARS-CoV-2 infection), ISG20 (with antiviral activity against RNA viruses), IRF-7 (the master regulator of interferon responses) [47] and of several ISGs (IFITM1, IFITM3, IRF9, IFI27, OAS2, MX1, MX2, SOCS3) involved in the regulation of the host defense responses to the virus [48]. This confirms the known ALI/iALI cultures' intrinsic response to SARS-CoV-2 infection focused on the activation of the interferon pathways. This is in line with a study showing strong expression of many ISGs in the respiratory tract of patients with COVID-19, supporting the idea that interferon-mediated immune response plays a key role in SARS-CoV-2 infection control [46].

Although SARS-CoV-2 pathogenesis has not been fully understood, it seems that excessive immune responses play a key role. Evidence suggests that immune response deregulation causes lung damage [49]. Here, we found that in infected ALI and iALI cultures, chemokines and cytokines, including IL-6, IL-1 β , interferon and TNF, were upregulated to coordinate all aspects of the immunogenic response to SARS-CoV-2 infection. Additionally, SARS-CoV-2-related pneumonia with severe respiratory failure is characterized by enhanced ECM [50]. Similarly, in infected ALI cultures, cells expressing MMP9, an enzyme that participates in ECM remodeling, were markedly increased. The molecular pathways involved in MMP-9 regulation during SARS-CoV-2 infection are not known. Ueland et al. suggested that MMP-9 may be an early indicator of respiratory failure in patients with COVID-19 [51], and Hsu et al. reported an important increase in MMP-9 concentration in the plasma of patients who developed acute respiratory distress syndrome [52]. Conversely, in infected ALI cultures, cells expressing ECM-related genes (e.g., VIM, ITGB1, ITGB6, GJA1 and PLOD2) were decreased compared with control cultures. Vimentin and integrin are critical targets for SARS-CoV-2 host cell invasion [53,54]. Identifying the molecular mechanisms that lead to their regulation will be pivotal to help us understand their role in epithelium damage and reparation during SARS-CoV-2 infection.

It is important to acknowledge that different MOIs may generate different transcriptomic profiles. Dose dependence is highly likely but extremely complex to address given the heterogeneity of the currently available data. Because of the internal consistency of our analysis, we defend the hypothesis that the findings we reported here represent at least the

core of SARS-CoV-2-induced genes, irrespective of the used MOI, and that variations associated with MOI changes might be outside this core.

Another important question we addressed concerned the miRNA role in the regulation of genes deregulated in infected ALI/iALI cultures. Recent investigations revealed that miRNAs are implicated in viral pathogenesis by altering the miRNA-modulated host gene regulation or the host immune system [55]. The variation in miRNA levels during virus infection and their role in modulating SARS-CoV-2 infection in human cells have been well described [15]. Thus, miRNA antagonists or mimics could be used to develop new therapeutic strategies for the treatment of patients with COVID-19 [56]. The anti-viral response by miRNAs may implicate the regulation of their mRNA targets that participate in the cellular response to viral infection. Interferon signaling was one of the primary effectors against SARS-CoV-2 infections in both ALI and iALI models. Moreover, genes encoding members of this pathway are direct targets of many miRNAs. For instance, MIR138 regulates ISG15 expression by direct binding to its 3' untranslated region (UTR) [57]. Similarly, MIR326-3p reduces the activity of an ISG20 3' UTR luciferase reporter [58]. MIR650, MIR29a-3p and MIR130a-3p regulate other ISGs, such as MX1, MX2, IFITM3 and IFITM1 [59–61]. Moreover, many miRNAs target the 3'UTR site of matrix metalloprotease-encoding genes. For instance, MIR34a and MIR19 target NFKBIA [62] (critical for SARS-CoV-2 entry in the cells) and MMP9 [63] (macrophage-derived biomarker associated with inflammation), whereas MIR130a targets the 3'UTR of pro-inflammatory metabolite genes (e.g., LOX [64] that interacts with SARS-CoV-2) [65]. Altogether, different culture models are necessary to validate the biological effect of these candidate miRNAs to SARS-CoV-2 infection and to understand the interactions between host ISGs, cytokines and miRNAs. More investigations are needed to determine the expression profiles of key miRNAs during viral infection, to better predict disease severity and to develop new therapeutic options based on these miRNAs for COVID-19 treatment and/or prevention.

4. Materials and Methods

4.1. ALI Culture of Primary Airway Epithelial Cells and iPSC-Derived Airway Epithelium for scRNA-Seq Analysis

Primary Human Bronchial Epithelial Cells (HBECs) were expanded and differentiated in ALI culture following the protocol given by StemCell Technologies. Briefly, cells were dissociated mechanically from bronchial biopsy specimens obtained via fiberoptic bronchoscopy (approval number: 2013 11 05; NCT02354677) and cultured in PneumaCult-Ex Plus expansion medium (cat #05041, StemCell Technologies, Saint-Egrève, France) for 15 days. After the expansion phase, differentiation was initiated by seeding 1.1×10^5 cells/insert on TranswellR polyester membranes (cat #3460, Corning, Kennebunk, ME, USA). Once epithelial cells reached confluence, the apical growth medium was removed, and the basal medium was replaced with PneumaCult™-ALI maintenance medium (cat #05002, StemCell Technologies, France) (i.e., day 0 of ALI culture). Epithelial cells were allowed to differentiate at 37 °C with 5% CO₂ for 28 days. The iPSC-derived airway epithelium on ALI (iALI model) was generated as previously described [4]. Briefly, the major stages of embryonic lung development were recapitulated as follows: stage 1, definitive endoderm (day 0–3) using activin A (100 ng/mL); stage 2, anterior foregut endoderm (day 4–8); stage 3, lung progenitor specification (day 9); and stage 4, epithelial layer (day 14). After 40 days, the airway epithelium on iALI displayed morphologic and functional similarities with primary

human airway epithelial cells and included different airway cell types (basal, secretory and multi-ciliated cells).

4.2. ScRNA-Seq and Data Analysis

Non-infected ALI and iALI cultures were dissociated with trypsin into single-cell suspensions. Cell viability (>83%) and aggregation (minimizing the presence of cell aggregates by using a cell strainer, with pore sizes of 30 to 40 microns) were tested before starting the single-cell library preparation. The concentration of freshly dissociated cells was adjusted to 1000 cells/mL in HBSS/0.05% BSA, and then the 10x Chromium Controller and the Chromium Single Cell 30 Reagent kit V3.1 were used to perform the scRNAseq experiments. Library preparation was performed according to the manufacturer's instructions using the Chromium Chip B Single Cell kit and Chromium Multiplex Kit (10X Genomics, Pleasanton, CA, USA). Sequencing was performed in paired-end mode with an S1 flow cell (28/8/87 cycles) and a NovaSeq 6000 sequencer (Illumina, San Diego, CA, USA) at the MGX core facility of Montpellier, France. First, the cell ranger mkfastq and cellranger count pipelines were used for the initial quality control, sample demultiplexing, mapping and raw data quantification. Fastq files were run with the Count application using default parameters and were aligned to the human genome reference sequence GRCh38, filtered and counted. C-loop software (version 6.2.0) was used to visualize clusters and sub-clusters of transcriptionally related cells and to identify candidate genes, the expression of which was enriched in specific clusters. Clustering results were visualized with the t-distributed Stochastic Neighbor-Embedding (tSNE) technique. Bronchial cell (biopsy/brushing samples) datasets included in [24] were analyzed through a COVID-19 Cell Atlas website portal and were visualized using Uniform Manifold Approximation and Projection (UMAP).

4.3. Functional Enrichment Analysis of Bulk RNA-Seq Datasets

The unique bulk RNA-seq signature was obtained from a publicly available list of differential expressed genes between the primary human lung epithelium infected with SARS-CoV-2 (multiplicity of infection, MOI, = 2 for 24 h) and mock-treated controls [18]. The GO functional enrichment and pathway enrichment analyses were performed with ShinyGO [26] and Gene Set Enrichment Analysis (GSEA) (<http://www.broadinstitute.org/gsea/>, accessed on October 2022). GO annotations were divided into three categories: biological process, molecular function and cellular component. In the enrichment analysis, the Fisher' exact test was used to test whether genes were enriched in a term, and an adjusted p value < 0.05 was set as the screening condition. GenGo Metacore software (Version 4.7) was used to identify miRNA targets. Heatmaps and gene networks were generated with Ingenuity Pathway Analysis (IPA, QIAGEN, Redwood City, CA, USA).

4.4. Analysis of Publicly Available Single-Cell RNA-Seq Datasets

A public scRNA-seq dataset (GEO accession number: GSE166766) of HBEC ALI culture samples infected with SARS-CoV-2 (MOI~0.01) was also analyzed [66]. To further investigate the dynamic nature of ALI epithelial cells before and after infection, RNA velocity analysis was measured to estimate the future state of individual cells. The Velocity® package was used to investigate the gene expression dynamics in the scRNA-seq data before virus infection and at day 3 post-infection (dpi). RNA velocity quantifies the change in the state of

a cell over time by distinguishing unspliced and spliced mRNAs reads. To obtain counts of spliced and unspliced mRNAs reads, Velocyto used the outputs of Cell Ranger (version 3.0.2) alignments with the command line ‘run10x’ and the transcriptome GRCh38.p12 (accession NCBI:GCA_000001405.27). At this step, loom files were created for the input data of the scVelo tool [28]. This python package allowed for normalizing with the `scv.pp.normalize_per_cell()` function and transform `scv.pp.log1p()`. Genes were filtered by keeping only the top 2000 highly variable genes (`n_top_genes = 2000` parameters for `scv.pp.filter_and_normalize` function). Then, moments were calculated for each cell across its nearest neighbors, with `n_neighbors` set to 30 and the first 10 PCs using the `scv.pp.moments()` function. Then, cell velocities were estimated using `scvelo.tl.velocity()` based on a stochastic model of transcriptional dynamics. To visualize the velocity graph, data were projected on the UMAP space and clusters defined by the CellRanger pipeline were colored. Seurat V4 and R we used to identify potential paracrine interactions (ligand receptors) between the different cell categories in ALI cultures infected with SARS-CoV-2 at 1, 2 and 3 dpi. After cluster identification on Seurat V4 [67], the function `cluster_analysis` from the SingleCellSignalR package [68] was used to compute paracrine interactions between cell clusters and to predict ligand–target links between interacting cells by combining their expression level with prior knowledge on gene regulatory networks and signaling pathways. To compare ALI and iALI samples, genes identified in our samples were combined with other publicly available datasets that used infected iPSC-derived AT2 cells (iAT2) [14], specifically for the genes related to inflammatory and interferon responses and extracellular ECM.

4.5. SARS-CoV-2 Virus Stock and Titration

The hCoV-19/France/HDF-IPP11602i/2021 (21A—Delta—B.1.617.2) strain was supplied by the National Reference Centre for Respiratory Viruses hosted by Institut Pasteur (Paris, France). The human sample from which this strain was isolated was provided by Dr Guiheneuf Raphaël, CH Simone Veil, Beauvais, France. The strain was propagated in VeroE6 cells with DMEM containing 25 mM HEPES at 37 °C and 5% CO₂, and viruses were harvested 72 h post-inoculation. Virus stocks were stored at -80 °C. Viruses from infected cell culture supernatants were titrated with the plaque assays on a monolayer of VeroE6 cells and 100 µL of virus serial dilutions. The plaque-forming unit (PFU) values were determined through crystal violet staining and then scoring the wells displaying cytopathic effects. The virus titer was determined as the number of PFU/mL, and MOI was the PFU/cell ratio.

4.6. iALI Infection by SARS-CoV-2

iALI cultures were washed 24 h before infection by adding culture medium to the apical side at 37 °C for 15 min. For SARS-CoV-2 infection, iALI apical side was covered with 350 µL of the appropriate viral dilution (2.5 x10⁵ PFU per sample) for 1 h 30 min at 37 °C. Then, the inoculum was removed, and the culture was quickly washed with culture medium. The first point of the kinetic analysis (Day 0) was collected by adding culture medium to the apical side at 37 °C for 15 min. iALI’s apical side were then washed every day with culture medium to collect kinetics samples. SARS-CoV-2 infection experiments were conducted inside the BSL3 facility at the CEMIPAI institute.

4.7. Reverse Transcription-Quantitative Polymerase Chain Reaction (RT-qPCR)

RNA was extracted from cells using the QIAshredder kit (QIAGEN, Redwood city, CA, USA) and the RNeasy mini kit (Qiagen, Redwood city, CA, USA) according to the manufacturer's instructions. Viral RNA was quantified by RT-qPCR in triplicate, as described [69], using the Luna Universal One-Step RT-qPCR Kit (New England Biolabs, Ipswich, MA, USA) and a BIORAD CFX Opus 384 system. iALI cultures were washed by adding culture medium at the apical side at 37 °C for 15 min; then, viral RNA was extracted and quantified, in triplicate, via RT-qPCR (amplification of the viral envelope E gene). The relative gene expression was calculated for each triplicate by normalizing to GAPDH gene level (control) and using the DDCT method, as previously described in [70]. Primers are listed in Table S1. For four genes (GJA1, IRF9, OAS1 and CXCL10), primers were designed using the website Primer3+. Their efficiency was confirmed using 2-fold serial dilutions of a cDNA pool. As IRF9, OAS1 and CXCL10 displayed a slope of -3.3 +/- 0.66 with an R² > 0.98 (only GJA1 R² = 0.96), an efficiency of 2 was used for the relative expression calculation (Supplementary Figure S2).

4.8. Measurements of Transepithelial Electrical Resistance (TEER)

Transepithelial resistance was measured daily with an EVOM2 (WPI, Friedberg, Germany), while the apical side was submerged in culture medium. Measurements were performed after 10 min of incubation at 37 °C.

4.9. Immunofluorescence Analysis

iALI cultures were fixed in 4% paraformaldehyde for 4 h. After three PBS washes, iALI samples were stored in PBS at 4 °C. Samples were permeabilized in 0.5% Triton X-100/PBS at room temperature for 20 min and then blocked with PBS/0.1% Triton X-100/1% bovine serum albumin (BSA)/10% donkey serum at room temperature for at least 1 h. Primary antibodies against p63 (AF1916, Biotechne, Minneapolis, MN, USA), TubIV (T7941, Sigma, Saint Louis, MO, USA) and SARS-CoV-2 M protein membrane (100-401-A55, Rockland Immunochemicals, Pottstown, PA, USA) were diluted (1/100, 1/200 and 1/200, respectively) in PBS/1%BSA/0.1%, Triton X-100 and added to the samples for overnight incubation. Then, samples were washed three times with PBS/0.025% Triton X-100 before incubation (room temperature for 2 h) with the following secondary antibodies: anti-mouse coupled to Alexafluor 555 (A31570, Invitrogen, Waltham, MA, USA), anti-rabbit coupled to Alexafluor 488 (A21206, Invitrogen, Waltham, MA, USA) and anti-goat coupled to Alexafluor 647 (A21447, Invitrogen, Waltham, MA, USA) (all diluted to 1/1000 in PBS/1% BSA/0.1%, Triton X-100). After three washes in PBS/0.025% Triton X-100, samples were incubated with DAPI (D9542, Sigma, Saint Louis, MO, USA), diluted 1/2500 in PBS for 5 min and rinsed in PBS. Then, iALI samples were separated for their support and mounted between glass slides. Confocal images were acquired using a Cell-Discoverer 7 LSM900 confocal laserscanning microscope (Zeiss, Oberkochen, Germany) at 40 x magnification and processed with Zen Blue.

4.10. Statistical Analysis

Data are presented as the mean \pm SEM, unless otherwise specified. Statistical analyses were performed using GraphPad Prism 5 software, version 5.0 (Student's t-test; GraphPad, San Diego, CA, USA). The shown data were from representative experiments, with similar results in at least three independent biological replicates, unless otherwise specified. Differences were evaluated using the Student's t-test. A p value ≤ 0.05 was considered significant.

5. Conclusions

Here, we characterized two ALI and iALI airway models to understand SARS-CoV-2 infection pathogenesis. We identified the inflammatory and interferon profiles induced in these models in response to SARS-CoV-2 infection. We provided a more detailed molecular portrait of the genes and cell types associated with SARS-CoV-2 infection in the ALI and iALI airway models. Further investigations are needed to determine whether similar responses take place in other SARS-CoV-2 target tissues models.

Author Contributions:

Conceptualization and supervision: S.A., A.B. and J.D.V.; resources, A.B. and J.D.V.; data analysis and interpretation: S.A., A.B., A.N., S.T., N.G., D.M., A.B. and J.D.V.; collection and/or assembly of data: S.A., E.A., F.F., C.B., A.P., I.V., D.M., A.B. and J.D.V.; validation, L.M., N.G. and D.M.; writing—original draft, S.A., A.B. and J.D.V.; writing—review and editing, S.A., E.A., L.M., D.M., A.B. and J.D.V. Scientific and technical support: all authors listed have made a substantial, direct, intellectual contribution to the work, reviewed the final manuscript, and approved it for publication. All authors have read and agreed to the published version of the manuscript.

Funding:

Supported by grants from the University Hospital of Montpellier (Appel d'offre interne, projet CILIPS 9174, projet INVECCO 9791), the association Vaincre la Mucoviscidose (Grant #RIF20170502048), the Fondation pour la Recherche Médicale (Grant #FDM20170638083), the Labex Numev (ANR-10-LAB-20), and Astrazenca. The acquisition of the Cell-Discoverer 7 LSM900 microscope was funded by FEDER-FSE Région Occitanie throughout the MIP-FISH project. Part of this research project was supported by the CNRS INSB funding through the VIROCRIB program.

Institutional Review Board Statement:

Subjects were recruited at Arnaud de Villeneuve hospital, Montpellier, France, under study protocols approved by the ethics—RRR study, NCT02354677, 2013-A01405-40 and INVECCO study, NCT03181204, 2017-A00252-51.

Informed Consent Statement:

All patients were informed and agreed to participate by signing written consent forms.

Data Availability Statement:

Publicly available data were obtained from gene expression Omnibus GEO repository: GSE147507 and GSE166766. Our single cell-RNAseq data are accessible at GEO with the provisional accession series number GSE236359 (GSM7528398) and GSE236317 (GSM7527906). Interactive exploration tools: <https://www.covid19cellatlas.org/index.healthy.html>, accessed on April 2020 and https://cellxgene.cziscience.com/d/cellular_census_of_human_lungs_bronchi-17.cxg/, accessed on April 2020. The gene expression profile from publicly RNA-seq data can be browsed with an interactive web-tool at: <https://crem.shinyapps.io/iAEC2infection/>, accessed on September 2020 (GSE153277).

Acknowledgments:

We thank Elisabetta Andermarcher for reading the manuscript.

Conflicts of Interest:

A.B. reports grants, personal fees, non-financial support and others from AstraZeneca; J.D.V. reports personal fees and others from Stem Genomics, personal fees and others from MedXCell Science, personal fees from Gilead and personal fees from Celgene, outside the submitted work. In addition, J.D.V. and S.A. have a pending patent EP20150306389. S.A. reports personal fees and others from Stem Genomics, outside the submitted work. E.A, L.M., A.N., F.F., C.B., S.W., A.P., I.V. and D.M. declare no conflict of interest.

References

1. Hoffmann, M.; Kleine-Weber, H.; Schroeder, S.; Krüger, N.; Herrler, T.; Erichsen, S.; Schiergens, T.S.; Herrler, G.; Wu, N.-H.; Nitsche, A.; et al. SARS-CoV-2 Cell Entry Depends on ACE2 and TMPRSS2 and Is Blocked by a Clinically Proven Protease Inhibitor. *Cell* **2020**, *181*, 271–280.e8. [[CrossRef](#)] [[PubMed](#)]
2. Hiemstra, P.S.; Tetley, T.D.; Janes, S.M. Airway and Alveolar Epithelial Cells in Culture. *Eur. Respir. J.* **2019**, *54*, 1900742. [[CrossRef](#)] [[PubMed](#)]
3. Knabe, L.; Petit, A.; Vernisse, C.; Charriot, J.; Pugnière, M.; Henriquet, C.; Sasorith, S.; Molinari, N.; Chanez, P.; Berthet, J.-P.; et al. CCSP Counterbalances Airway Epithelial-Driven Neutrophilic Chemotaxis. *Eur. Respir. J.* **2019**, *54*, 1802408. [[CrossRef](#)] [[PubMed](#)]
4. Ahmed, E.; Fieldes, M.; Bourguignon, C.; Mianné, J.; Petit, A.; Jory, M.; Cazevieille, C.; Boukhaddaoui, H.; Garnett, J.P.; Hirtz, C.; et al. Differentiation of Human Induced Pluripotent Stem Cells from Patients with Severe COPD into Functional Airway Epithelium. *Cells* **2022**, *11*, 2422. [[CrossRef](#)]
5. Huang, S.X.L.; Islam, M.N.; O'Neill, J.; Hu, Z.; Yang, Y.-G.; Chen, Y.-W.; Mumau, M.; Green, M.D.; Vunjak-Novakovic, G.; Bhattacharya, J.; et al. Efficient Generation of Lung and Airway Epithelial Cells from Human Pluripotent Stem Cells. *Nat. Biotechnol.* **2014**, *32*, 84–91. [[CrossRef](#)]

6. McCauley, K.B.; Hawkins, F.; Serra, M.; Thomas, D.C.; Jacob, A.; Kotton, D.N. Efficient Derivation of Functional Human Airway Epithelium from Pluripotent Stem Cells via Temporal Regulation of Wnt Signaling. *Cell Stem Cell* **2017**, *20*, 844–857.e6. [[CrossRef](#)]
7. McCauley, K.B.; Alysandratos, K.-D.; Jacob, A.; Hawkins, F.; Caballero, I.S.; Vedaie, M.; Yang, W.; Slovik, K.J.; Morley, M.; Carraro, G.; et al. Single-Cell Transcriptomic Profiling of Pluripotent Stem Cell-Derived SCGB3A2+ Airway Epithelium. *Stem Cell Rep.* **2018**, *10*, 1579–1595. [[CrossRef](#)]
8. Pezzulo, A.A.; Starner, T.D.; Scheetz, T.E.; Traver, G.L.; Tilley, A.E.; Harvey, B.-G.; Crystal, R.G.; McCray, P.B.; Zabner, J. The Air-Liquid Interface and Use of Primary Cell Cultures Are Important to Recapitulate the Transcriptional Profile of in Vivo Airway Epithelia. *Am. J. Physiol. Lung Cell. Mol. Physiol.* **2011**, *300*, L25–L31. [[CrossRef](#)]
9. Dvorak, A.; Tilley, A.E.; Shaykhiev, R.; Wang, R.; Crystal, R.G. Do Airway Epithelium Air-Liquid Cultures Represent the in Vivo Airway Epithelium Transcriptome? *Am. J. Respir. Cell Mol. Biol.* **2011**, *44*, 465–473. [[CrossRef](#)]
10. Shirato, K.; Kawase, M.; Matsuyama, S. Wild-Type Human Coronaviruses Prefer Cell-Surface TMPRSS2 to Endosomal Cathepsins for Cell Entry. *Virology* **2018**, *517*, 9–15. [[CrossRef](#)]
11. Djidrovski, I.; Georgiou, M.; Hughes, G.L.; Patterson, E.I.; Casas-Sanchez, A.; Pennington, S.H.; Biagini, G.A.; Moya-Molina, M.; van den Bor, J.; Smit, M.J.; et al. SARS-CoV-2 Infects an Upper Airway Model Derived from Induced Pluripotent Stem Cells. *Stem Cells* **2021**, *39*, 1310–1321. [[CrossRef](#)] [[PubMed](#)]
12. Abo, K.M.; Ma, L.; Matte, T.; Huang, J.; Alysandratos, K.D.; Werder, R.B.; Mithal, A.; Beermann, M.L.; Lindstrom-Vautrin, J.; Mostoslavsky, G.; et al. Human iPSC-Derived Alveolar and Airway Epithelial Cells Can Be Cultured at Air-Liquid Interface and Express SARS-CoV-2 Host Factors. *bioRxiv* **2020**. [[CrossRef](#)]
13. Vanderheiden, A.; Ralfs, P.; Chirkova, T.; Upadhyay, A.A.; Zimmerman, M.G.; Bedoya, S.; Aoued, H.; Tharp, G.M.; Pellegrini, K.L.; Manfredi, C.; et al. Type I and Type III Interferons Restrict SARS-CoV-2 Infection of Human Airway Epithelial Cultures. *J. Virol.* **2020**, *94*, e00985-20. [[CrossRef](#)] [[PubMed](#)]
14. Huang, J.; Hume, A.J.; Abo, K.M.; Werder, R.B.; Villacorta-Martin, C.; Alysandratos, K.-D.; Beermann, M.L.; Simone-Roach, C.; Lindstrom-Vautrin, J.; Olejnik, J.; et al. SARS-CoV-2 Infection of Pluripotent Stem Cell-Derived Human Lung Alveolar Type 2 Cells Elicits a Rapid Epithelial-Intrinsic Inflammatory Response. *Cell Stem Cell* **2020**, *27*, 962–973.e7. [[CrossRef](#)]
15. Osan, J.K.; DeMontigny, B.A.; Mehedi, M. Immunohistochemistry for Protein Detection in PFA-Fixed Paraffin-Embedded SARS-CoV-2-Infected COPD Airway Epithelium. *STAR Protoc.* **2021**, *2*, 100663. [[CrossRef](#)]

16. Ahmed, E.; Sansac, C.; Assou, S.; Gras, D.; Petit, A.; Vachier, I.; Chanez, P.; De Vos, J.; Bourdin, A. Lung Development, Regeneration and Plasticity: From Disease Physiopathology to Drug Design Using Induced Pluripotent Stem Cells. *Pharmacol. Ther.* **2018**, *183*, 58–77. [[CrossRef](#)] [[PubMed](#)]
17. Gordon, D.E.; Jang, G.M.; Bouhaddou, M.; Xu, J.; Obernier, K.; White, K.M.; O'Meara, M.J.; Rezelj, V.V.; Guo, J.Z.; Swaney, D.L.; et al. A SARS-CoV-2 Protein Interaction Map Reveals Targets for Drug Repurposing. *Nature* **2020**, *583*, 459–468. [[CrossRef](#)]
18. Blanco-Melo, D.; Nilsson-Payant, B.E.; Liu, W.-C.; Uhl, S.; Hoagland, D.; Møller, R.; Jordan, T.X.; Oishi, K.; Panis, M.; Sachs, D.; et al. Imbalanced Host Response to SARS-CoV-2 Drives Development of COVID-19. *Cell* **2020**, *181*, 1036–1045.e9. [[CrossRef](#)]
19. Messina, F.; Giombini, E.; Agrati, C.; Vairo, F.; Ascoli Bartoli, T.; Al Moghazi, S.; Piacentini, M.; Locatelli, F.; Kobinger, G.; Maeurer, M.; et al. COVID-19: Viral-Host Interactome Analyzed by Network Based-Approach Model to Study Pathogenesis of SARS-CoV-2 Infection. *J. Transl. Med.* **2020**, *18*, 233. [[CrossRef](#)]
20. Lukassen, S.; Chua, R.L.; Trefzer, T.; Kahn, N.C.; Schneider, M.A.; Muley, T.; Winter, H.; Meister, M.; Veith, C.; Boots, A.W.; et al. SARS-CoV-2 Receptor ACE2 and TMPRSS2 Are Primarily Expressed in Bronchial Transient Secretory Cells. *EMBO J.* **2020**, *39*, e105114. [[CrossRef](#)]
21. Fiege, J.K.; Thiede, J.M.; Nanda, H.A.; Matchett, W.E.; Moore, P.J.; Montanari, N.R.; Thielen, B.K.; Daniel, J.; Stanley, E.; Hunter, R.C.; et al. Single Cell Resolution of SARS-CoV-2 Tropism, Antiviral Responses, and Susceptibility to Therapies in Primary Human Airway Epithelium. *PLoS Pathog.* **2021**, *17*, e1009292. [[CrossRef](#)]
22. Zhang, Z.; Zhu, Z.; Chen, W.; Cai, Z.; Xu, B.; Tan, Z.; Wu, A.; Ge, X.; Guo, X.; Tan, Z.; et al. Cell Membrane Proteins with High N-Glycosylation, High Expression and Multiple Interaction Partners Are Preferred by Mammalian Viruses as Receptors. *Bioinformatics* **2019**, *35*, 723–728. [[CrossRef](#)]
23. Mason, P.R.; Gwanzura, L. Reduced Lymphocyte Responses to Mitogens in Natural and Experimental Trichomoniasis. *Infect. Immun.* **1990**, *58*, 3553–3557. [[CrossRef](#)]
24. Vieira Braga, F.A.; Kar, G.; Berg, M.; Carpaij, O.A.; Polanski, K.; Simon, L.M.; Brouwer, S.; Gomes, T.; Hesse, L.; Jiang, J.; et al. A Cellular Census of Human Lungs Identifies Novel Cell States in Health and in Asthma. *Nat. Med.* **2019**, *25*, 1153–1163. [[CrossRef](#)]
25. Yeo, S.J.; Yun, Y.J.; Lyu, M.A.; Woo, S.Y.; Woo, E.R.; Kim, S.J.; Lee, H.J.; Park, H.K.; Kook, Y.H. Respiratory Syncytial Virus Infection Induces Matrix Metalloproteinase-9 Expression in Epithelial Cells. *Arch. Virol.* **2002**, *147*, 229–242. [[CrossRef](#)]
26. Vermeer, P.D.; Denker, J.; Estin, M.; Moninger, T.O.; Keshavjee, S.; Karp, P.; Kline, J.N.; Zabner, J. MMP9 Modulates Tight Junction Integrity and Cell Viability in Human Airway Epithelia. *Am. J. Physiol. Lung Cell. Mol. Physiol.* **2009**, *296*, L751–L762. [[CrossRef](#)]

27. Mecham, R.P.; Broekelmann, T.J.; Fliszar, C.J.; Shapiro, S.D.; Welgus, H.G.; Senior, R.M. Elastin Degradation by Matrix Metalloproteinases. Cleavage Site Specificity and Mechanisms of Elastolysis. *J. Biol. Chem.* **1997**, *272*, 18071–18076. [[CrossRef](#)] [[PubMed](#)]
28. Bergen, V.; Lange, M.; Peidli, S.; Wolf, F.A.; Theis, F.J. Generalizing RNA Velocity to Transient Cell States through Dynamical Modeling. *Nat. Biotechnol.* **2020**, *38*, 1408–1414. [[CrossRef](#)] [[PubMed](#)]
29. Chow, J.T.-S.; Salmena, L. Prediction and Analysis of SARS-CoV-2-Targeting MicroRNA in Human Lung Epithelium. *Genes* **2020**, *11*, 1002. [[CrossRef](#)] [[PubMed](#)]
30. Montoro, D.T.; Haber, A.L.; Biton, M.; Vinarsky, V.; Lin, B.; Birket, S.E.; Yuan, F.; Chen, S.; Leung, H.M.; Villoria, J.; et al. A Revised Airway Epithelial Hierarchy Includes CFTR-Expressing Ionocytes. *Nature* **2018**, *560*, 319–324. [[CrossRef](#)]
31. Plasschaert, L.W.; Žilionis, R.; Choo-Wing, R.; Savova, V.; Knehr, J.; Roma, G.; Klein, A.M.; Jaffe, A.B. A Single-Cell Atlas of the Airway Epithelium Reveals the CFTR-Rich Pulmonary Ionocyte. *Nature* **2018**, *560*, 377–381. [[CrossRef](#)]
32. Goldfarbmuren, K.C.; Jackson, N.D.; Sajuthi, S.P.; Dyjack, N.; Li, K.S.; Rios, C.L.; Plender, E.G.; Montgomery, M.T.; Everman, J.L.; Bratcher, P.E.; et al. Dissecting the Cellular Specificity of Smoking Effects and Reconstructing Lineages in the Human Airway Epithelium. *Nat. Commun.* **2020**, *11*, 2485. [[CrossRef](#)] [[PubMed](#)]
33. Barkauskas, C.E.; Chung, M.-I.; Fioret, B.; Gao, X.; Katsura, H.; Hogan, B.L.M. Lung Organoids: Current Uses and Future Promise. *Development* **2017**, *144*, 986–997. [[CrossRef](#)] [[PubMed](#)]
34. Miller, A.J.; Hill, D.R.; Nagy, M.S.; Aoki, Y.; Dye, B.R.; Chin, A.M.; Huang, S.; Zhu, F.; White, E.S.; Lama, V.; et al. In Vitro Induction and In Vivo Engraftment of Lung Bud Tip Progenitor Cells Derived from Human Pluripotent Stem Cells. *Stem Cell Rep.* **2018**, *10*, 101–119. [[CrossRef](#)]
35. Chen, Y.-W.; Huang, S.X.; de Carvalho, A.L.R.T.; Ho, S.-H.; Islam, M.N.; Volpi, S.; Notarangelo, L.D.; Ciancanelli, M.; Casanova, J.-L.; Bhattacharya, J.; et al. A Three-Dimensional Model of Human Lung Development and Disease from Pluripotent Stem Cells. *Nat. Cell Biol.* **2017**, *19*, 542–549. [[CrossRef](#)]
36. Huang, S.X.L.; Green, M.D.; de Carvalho, A.T.; Mumau, M.; Chen, Y.-W.; D'Souza, S.L.; Snoeck, H.-W. The in Vitro Generation of Lung and Airway Progenitor Cells from Human Pluripotent Stem Cells. *Nat. Protoc.* **2015**, *10*, 413–425. [[CrossRef](#)]
37. Wohnhaas, C.T.; Gindele, J.A.; Kiechle, T.; Shen, Y.; Leparc, G.G.; Stierstorfer, B.; Stahl, H.; Gantner, F.; Viollet, C.; Schymeinsky, J.; et al. Cigarette Smoke Specifically Affects Small Airway Epithelial Cell Populations and Triggers the Expansion of Inflammatory and Squamous Differentiation Associated Basal Cells. *Int. J. Mol. Sci.* **2021**, *22*, 7646. [[CrossRef](#)]

38. Zhu, N.; Wang, W.; Liu, Z.; Liang, C.; Wang, W.; Ye, F.; Huang, B.; Zhao, L.; Wang, H.; Zhou, W.; et al. Morphogenesis and Cytopathic Effect of SARS-CoV-2 Infection in Human Airway Epithelial Cells. *Nat. Commun.* **2020**, *11*, 3910. [[CrossRef](#)]
39. Chien, J.-Y.; Hsueh, P.-R.; Cheng, W.-C.; Yu, C.-J.; Yang, P.-C. Temporal Changes in Cytokine/Chemokine Profiles and Pulmonary Involvement in Severe Acute Respiratory Syndrome. *Respirology* **2006**, *11*, 715–722. [[CrossRef](#)]
40. Melchjorsen, J.; Sørensen, L.N.; Paludan, S.R. Expression and Function of Chemokines during Viral Infections: From Molecular Mechanisms to in Vivo Function. *J. Leukoc. Biol.* **2003**, *74*, 331–343. [[CrossRef](#)]
41. McGonagle, D.; Sharif, K.; O'Regan, A.; Bridgewood, C. The Role of Cytokines Including Interleukin-6 in COVID-19 Induced Pneumonia and Macrophage Activation Syndrome-Like Disease. *Autoimmun. Rev.* **2020**, *19*, 102537. [[CrossRef](#)]
42. Brocker, C.; Thompson, D.; Matsumoto, A.; Nebert, D.W.; Vasiliou, V. Evolutionary Divergence and Functions of the Human Interleukin (IL) Gene Family. *Hum. Genom.* **2010**, *5*, 30–55. [[CrossRef](#)]
43. Hunter, C.A.; Jones, S.A. IL-6 as a Keystone Cytokine in Health and Disease. *Nat. Immunol.* **2015**, *16*, 448–457. [[CrossRef](#)]
44. McDermott, J.E.; Mitchell, H.D.; Gralinski, L.E.; Einfeld, A.J.; Josset, L.; Bankhead, A.; Neumann, G.; Tilton, S.C.; Schäfer, A.; Li, C.; et al. The Effect of Inhibition of PP1 and TNF β Signaling on Pathogenesis of SARS Coronavirus. *BMC Syst. Biol.* **2016**, *10*, 93. [[CrossRef](#)]
45. Lee, J.S.; Park, S.; Jeong, H.W.; Ahn, J.Y.; Choi, S.J.; Lee, H.; Choi, B.; Nam, S.K.; Sa, M.; Kwon, J.-S.; et al. Immunophenotyping of COVID-19 and Influenza Highlights the Role of Type I Interferons in Development of Severe COVID-19. *Sci. Immunol.* **2020**, *5*, eabd1554. [[CrossRef](#)]
46. Zhou, Z.; Ren, L.; Zhang, L.; Zhong, J.; Xiao, Y.; Jia, Z.; Guo, L.; Yang, J.; Wang, C.; Jiang, S.; et al. Heightened Innate Immune Responses in the Respiratory Tract of COVID-19 Patients. *Cell Host Microbe* **2020**, *27*, 883–890.e2. [[CrossRef](#)] [[PubMed](#)]
47. Honda, K.; Yanai, H.; Negishi, H.; Asagiri, M.; Sato, M.; Mizutani, T.; Shimada, N.; Ohba, Y.; Takaoka, A.; Yoshida, N.; et al. IRF-7 Is the Master Regulator of Type-I Interferon-Dependent Immune Responses. *Nature* **2005**, *434*, 772–777. [[CrossRef](#)]
48. Schneider, W.M.; Chevillotte, M.D.; Rice, C.M. Interferon-Stimulated Genes: A Complex Web of Host Defenses. *Annu. Rev. Immunol.* **2014**, *32*, 513–545. [[CrossRef](#)]
49. Li, G.; Fan, Y.; Lai, Y.; Han, T.; Li, Z.; Zhou, P.; Pan, P.; Wang, W.; Hu, D.; Liu, X.; et al. Coronavirus Infections and Immune Responses. *J. Med. Virol.* **2020**, *92*, 424–432. [[CrossRef](#)] [[PubMed](#)]

50. George, P.M.; Wells, A.U.; Jenkins, R.G. Pulmonary Fibrosis and COVID-19: The Potential Role for Antifibrotic Therapy. *Lancet Respir. Med.* **2020**, *8*, 807–815. [[CrossRef](#)] [[PubMed](#)]
51. Ueland, T.; Holter, J.C.; Holten, A.R.; Müller, K.E.; Lind, A.; Bekken, G.K.; Dudman, S.; Aukrust, P.; Dyrhol-Riise, A.M.; Heggelund, L. Distinct and Early Increase in Circulating MMP-9 in COVID-19 Patients with Respiratory Failure. *J. Infect.* **2020**, *81*, e41–e43. [[CrossRef](#)]
52. Hsu, A.T.; Barrett, C.D.; DeBusk, G.M.; Ellson, C.D.; Gautam, S.; Talmor, D.S.; Gallagher, D.C.; Yaffe, M.B. Kinetics and Role of Plasma Matrix Metalloproteinase-9 Expression in Acute Lung Injury and the Acute Respiratory Distress Syndrome. *Shock* **2015**, *44*, 128–136. [[CrossRef](#)] [[PubMed](#)]
53. Suprewicz, Ł.; Swoger, M.; Gupta, S.; Piktel, E.; Byfield, F.J.; Iwamoto, D.V.; Germann, D.; Reszeć, J.; Marcińczyk, N.; Carroll, R.J.; et al. Extracellular Vimentin as a Target against SARS-CoV-2 Host Cell Invasion. *bioRxiv* **2021**. [[CrossRef](#)]
54. Sigrist, C.J.; Bridge, A.; Le Mercier, P. A Potential Role for Integrins in Host Cell Entry by SARS-CoV-2. *Antivir. Res.* **2020**, *177*, 104759. [[CrossRef](#)]
55. Trobaugh, D.W.; Klimstra, W.B. MicroRNA Regulation of RNA Virus Replication and Pathogenesis. *Trends Mol. Med.* **2017**, *23*, 80–93. [[CrossRef](#)] [[PubMed](#)]
56. Hanna, J.; Hossain, G.S.; Kocerha, J. The Potential for MicroRNA Therapeutics and Clinical Research. *Front. Genet.* **2019**, *10*, 478. [[CrossRef](#)] [[PubMed](#)]
57. Zuo, C.; Sheng, X.; Liu, Z.; Ma, M.; Xiong, S.; Deng, H.; Li, S.; Yang, D.; Wang, X.; Xiao, H.; et al. MicroRNA-138 Enhances TRAIL-Induced Apoptosis through Interferon-Stimulated Gene 15 Downregulation in Hepatocellular Carcinoma Cells. *Tumour Biol. J. Int. Soc. Oncodev. Biol. Med.* **2017**, *39*, 1010428317710410. [[CrossRef](#)]
58. Chai, W.; Li, J.; Shangguan, Q.; Liu, Q.; Li, X.; Qi, D.; Tong, X.; Liu, W.; Ye, X. Lnc-*ISG20* Inhibits Influenza A Virus Replication by Enhancing *ISG20* Expression. *J. Virol.* **2018**, *92*, e00539-18. [[CrossRef](#)]
59. Pichulik, T.; Khatamzas, E.; Liu, X.; Brain, O.; Delmiro Garcia, M.; Leslie, A.; Danis, B.; Mayer, A.; Baban, D.; Ragoussis, J.; et al. Pattern Recognition Receptor Mediated Downregulation of MicroRNA-650 Fine-Tunes MxA Expression in Dendritic Cells Infected with Influenza A Virus. *Eur. J. Immunol.* **2016**, *46*, 167–177. [[CrossRef](#)]
60. Liang, Y.; Li, E.; Min, J.; Gong, C.; Gao, J.; Ai, J.; Liao, W.; Wu, L. MiR-29a Suppresses the Growth and Metastasis of Hepatocellular Carcinoma through *IFITM3*. *Oncol. Rep.* **2018**, *40*, 3261–3272. [[CrossRef](#)]
61. Bhanja Chowdhury, J.; Shrivastava, S.; Steele, R.; Di Bisceglie, A.M.; Ray, R.; Ray, R.B. Hepatitis C Virus Infection Modulates Expression of Interferon Stimulatory Gene *IFITM1* by Upregulating MiR-130A. *J. Virol.* **2012**, *86*, 10221–10225. [[CrossRef](#)] [[PubMed](#)]

62. Hart, M.; Walch-Rückheim, B.; Friedmann, K.S.; Rheinheimer, S.; Tänzer, T.; Glombitza, B.; Sester, M.; Lenhof, H.-P.; Hoth, M.; Schwarz, E.C.; et al. MiR-34a: A New Player in the Regulation of T Cell Function by Modulation of NF-KB Signaling. *Cell Death Dis.* **2019**, *10*, 46. [[CrossRef](#)] [[PubMed](#)]
63. Jia, L.-F.; Wei, S.-B.; Mitchelson, K.; Gao, Y.; Zheng, Y.-F.; Meng, Z.; Gan, Y.-H.; Yu, G.-Y. MiR-34a Inhibits Migration and Invasion of Tongue Squamous Cell Carcinoma via Targeting MMP9 and MMP14. *PLoS ONE* **2014**, *9*, e108435. [[CrossRef](#)]
64. Boufraquech, M.; Nilubol, N.; Zhang, L.; Gara, S.K.; Sadowski, S.M.; Mehta, A.; He, M.; Davis, S.; Dreiling, J.; Copland, J.A.; et al. MiR30a Inhibits LOX Expression and Anaplastic Thyroid Cancer Progression. *Cancer Res.* **2015**, *75*, 367–377. [[CrossRef](#)] [[PubMed](#)]
65. Seethy, A.A.; Singh, S.; Mukherjee, I.; Pethusamy, K.; Purkayastha, K.; Sharma, J.B.; Sharma, R.S.; Dhar, R.; Karmakar, S. Potential SARS-CoV-2 Interactions with Proteins Involved in Trophoblast Functions—An in-Silico Study. *Placenta* **2021**, *103*, 141–151. [[CrossRef](#)]
66. Ravindra, N.G.; Alfajaro, M.M.; Gasque, V.; Huston, N.C.; Wan, H.; Szigeti-Buck, K.; Yasumoto, Y.; Greaney, A.M.; Habet, V.; Chow, R.D.; et al. Single-Cell Longitudinal Analysis of SARS-CoV-2 Infection in Human Airway Epithelium Identifies Target Cells, Alterations in Gene Expression, and Cell State Changes. *PLoS Biol.* **2021**, *19*, e3001143. [[CrossRef](#)]
67. Hao, Y.; Hao, S.; Andersen-Nissen, E.; Mauck, W.M.; Zheng, S.; Butler, A.; Lee, M.J.; Wilk, A.J.; Darby, C.; Zager, M.; et al. Integrated Analysis of Multimodal Single-Cell Data. *Cell* **2021**, *184*, 3573–3587.e29. [[CrossRef](#)]
68. Cabello-Aguilar, S.; Alame, M.; Kon-Sun-Tack, F.; Fau, C.; Lacroix, M.; Colinge, J. SingleCellSignalR: Inference of Intercellular Networks from Single-Cell Transcriptomics. *Nucleic Acids Res.* **2020**, *48*, e55. [[CrossRef](#)]
69. Corman, V.M.; Landt, O.; Kaiser, M.; Molenkamp, R.; Meijer, A.; Chu, D.K.; Bleicker, T.; Brünink, S.; Schneider, J.; Schmidt, M.L.; et al. Detection of 2019 Novel Coronavirus (2019-NCoV) by Real-Time RT-PCR. *Euro Surveill. Bull. Eur. Sur. Mal. Transm. Eur. Commun. Dis. Bull.* **2020**, *25*, 2000045. [[CrossRef](#)]
70. Chable-Bessia, C.; Boullé, C.; Neyret, A.; Swain, J.; Hénaut, M.; Merida, P.; Gros, N.; Makinson, A.; Lyonnais, S.; Chesnais, C.; et al. Low Selectivity Indices of Ivermectin and Macroyclic Lactones on SARS-CoV-2 Replication In Vitro. *COVID* **2022**, *2*, 60–75. [[CrossRef](#)]