



**HAL**  
open science

## Disrespect during childbirth and postpartum mental health: a French cohort study

Emma Leavy, Marion Cortet, Cyril Huissoud, Thomas Desplanches, Jessica Sormani, Sylvie Viaux-Savelon, Corinne Dupont, Swann Pichon, Laurent Gaucher

### ► To cite this version:

Emma Leavy, Marion Cortet, Cyril Huissoud, Thomas Desplanches, Jessica Sormani, et al.. Disrespect during childbirth and postpartum mental health: a French cohort study. Journée de la recherche PGO, Jun 2023, Genève (Suisse), Switzerland. hal-04177961

**HAL Id: hal-04177961**

**<https://hal.science/hal-04177961v1>**

Submitted on 7 Aug 2023

**HAL** is a multi-disciplinary open access archive for the deposit and dissemination of scientific research documents, whether they are published or not. The documents may come from teaching and research institutions in France or abroad, or from public or private research centers.

L'archive ouverte pluridisciplinaire **HAL**, est destinée au dépôt et à la diffusion de documents scientifiques de niveau recherche, publiés ou non, émanant des établissements d'enseignement et de recherche français ou étrangers, des laboratoires publics ou privés.

# Disrespect during childbirth and postpartum mental health: a French cohort study

Emma Leavy, Marion Cortet, Cyril Huissoud, Thomas Desplanches, Jessica Sormani, Sylvie Viaux-Savelon, Corinne Dupont, Swann Pichon and Laurent Gaucher

## Context

The same year the WHO warned about mistreatment, a social media movement with #paytonuterus brought to light the problematic of obstetrical violence in French speaking countries. A year later, in 2015, the International Federation of Gynecology and Obstetrics defined 7 categories of disrespect and abuse during childbirth also known as obstetric violence (1). To allow contextual relevance, the French National Academy of Medicine has focused only on the disrespects committed by the caregivers and has not retained the overall constituents of obstetric violence (2,3).

Inadequate support and loss of control in labour are some of the most frequently reported risk factors for **childbirth-related post-traumatic stress disorder (CB-PTSD)** (4). Hence the need to **explore the associations between disrespect during childbirth and the mental well-being of mothers. We conducted** a multicentered cohort study within a French perinatal network and used auto-questionnaires to measure women's report of disrespect during childbirth, **CB-PTSD and Postpartum Depression (PPD)**.



Appropriate behaviour



Respect for privacy



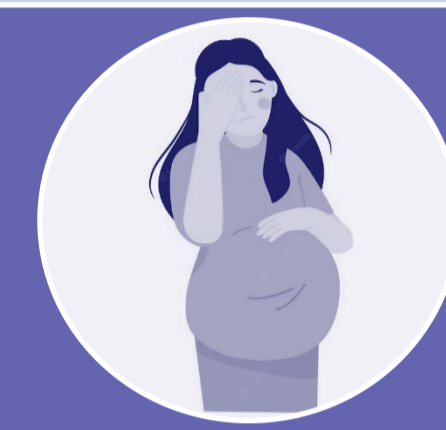
Appropriate language



Gentleness of care



Clear and appropriate information



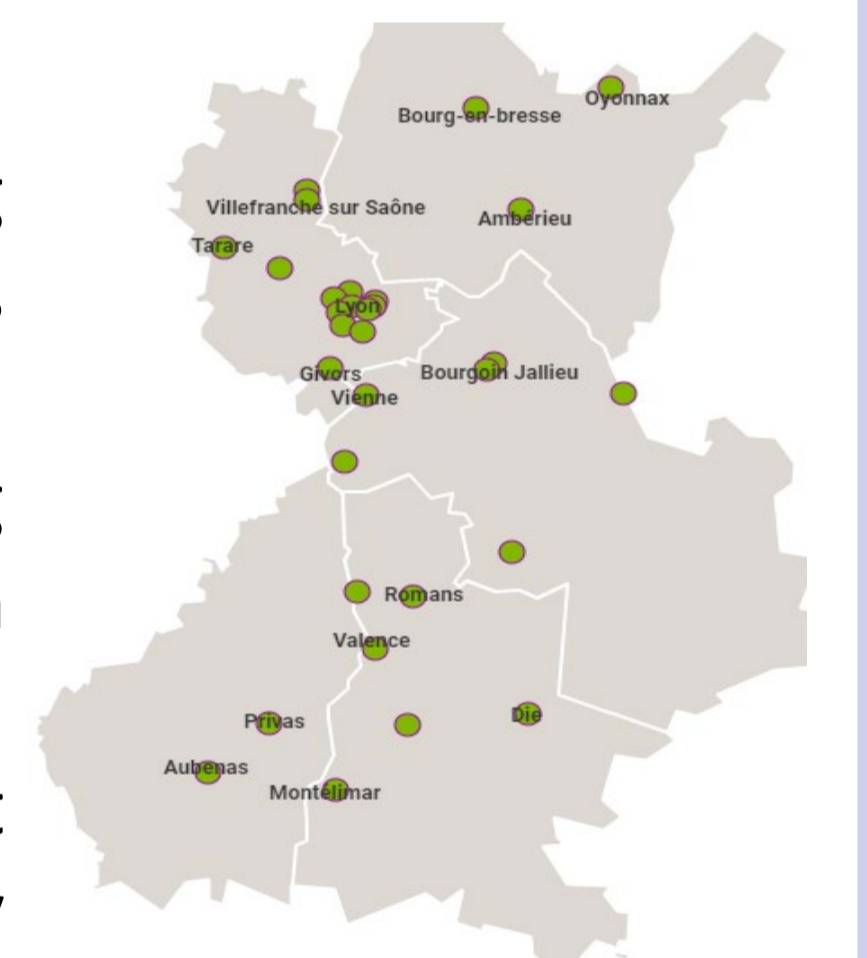
Consideration of pain



Participation in decision-making

## Methods

A multicenter observational cohort study measured the women's report of disrespect during childbirth and mental health during postpartum. Women's report of disrespect during childbirth was measured by the **Behavior of the Mother's Caregivers – Satisfaction Questionnaire (BMC-SQ)** 3 days and 2 months after childbirth. CB-PTSD and PPD were assessed 2 months after childbirth using respectively the **Post-Traumatic Checklist Scale (PCLS)** and the **Edinburgh Postnatal Depression Scale (EPDS)**. This study followed **123 mothers** from childbirth to 2 months postpartum. Two multiple linear regressions allowed us to observe the associations between reported disrespect during childbirth, EPDS scores, PCLS scores, and other characteristics such as the mother's age, body mass index, education, baby's birth term, mode of birth, perineal trauma and others.

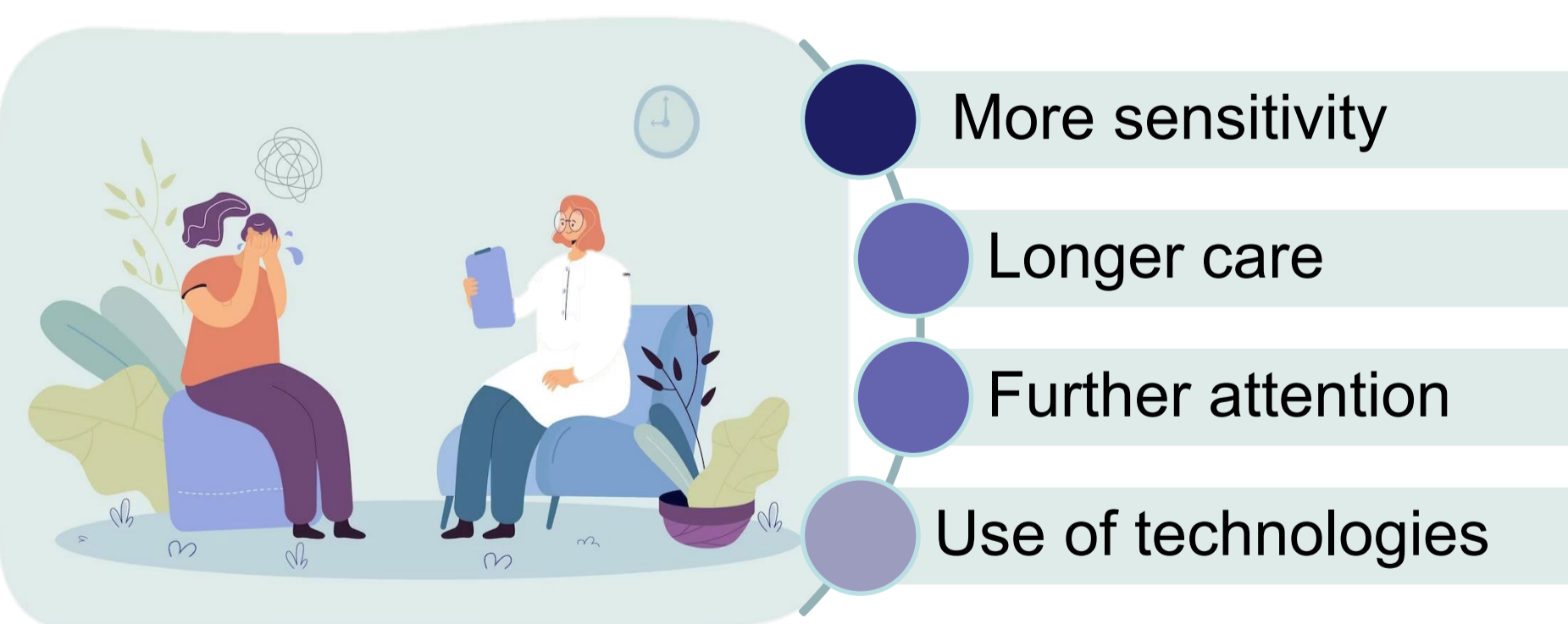
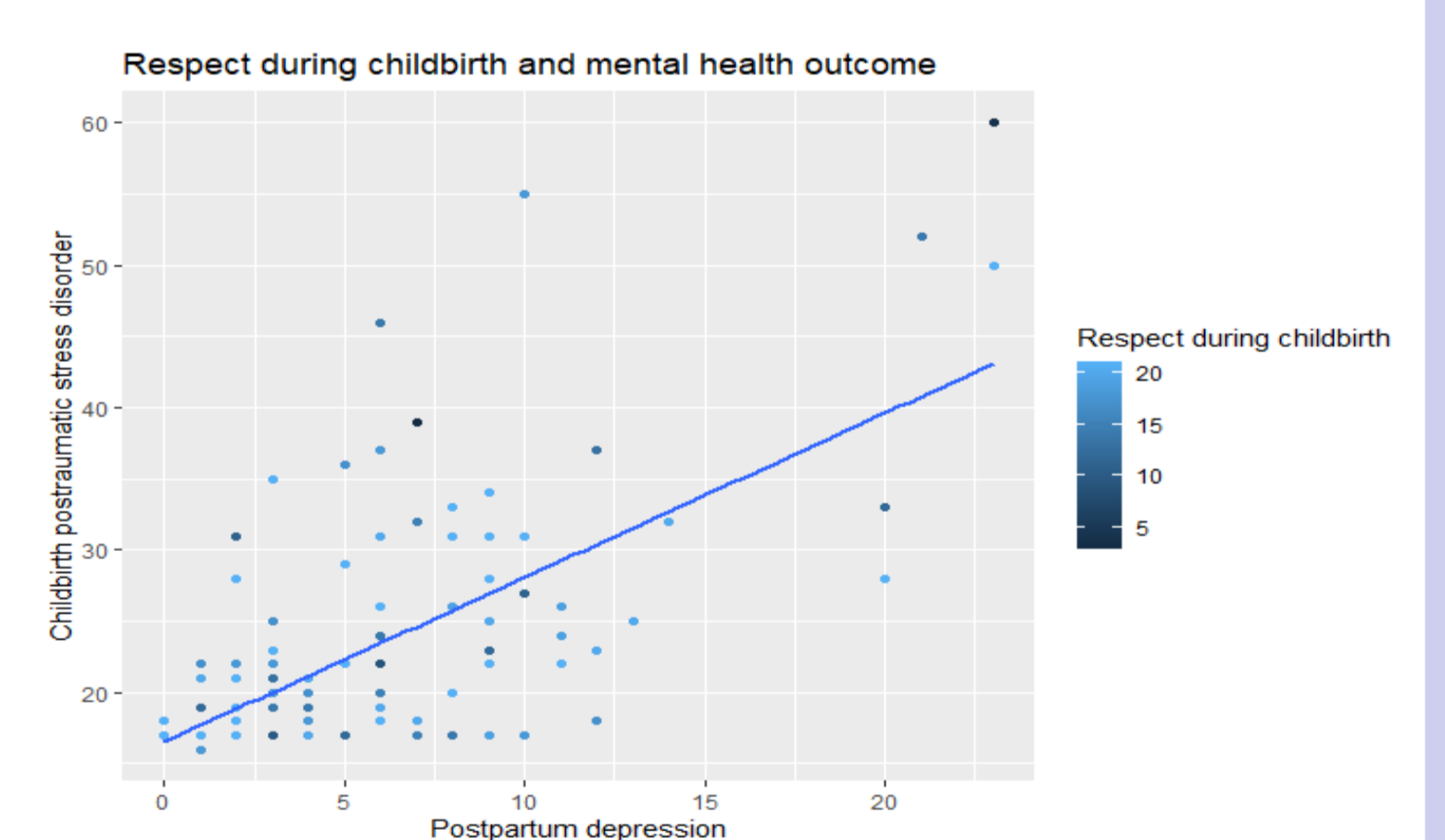


AURORE perinatal network

## Results

**Primary outcome:** 8.1% (n = 10/123) of women reported disrespect during childbirth within the first 3 days after birth, and a higher proportion did so (10.6%, n = 13/123) when questioned at 2 months post-partum.

**Secondary outcome :** Higher scores of CB-PTSD at 2 months after birth was significantly associated with reported disrespect during childbirth at 3 days ( $R^2 = 0.11$ ,  $F(1,117) = 15.14$ ,  $p < 0.001$  and  $\beta = 9.11$ ,  $p = 0.006$ ). There is a positive association between reported disrespect in the birth room and PPD ( $R^2 = 0.04$ ,  $F(1, 117) = 6.28$ ,  $p = 0.01$  and  $\beta = 3.36$ ,  $p = 0.096$ ). Meanwhile, PPD and CB-PTSD were significantly associated 2 months after childbirth ( $R^2 = 0.41$ ,  $F(1,117) = 82.39$ ,  $p < 0.01$  and  $\beta = 11.41$ ,  $p < 0.001$ ).



## Practical recommendations

1. Raise healthcare staff's sensitivity to both issues of disrespect during care and CB-PTSD
2. Maintain contact with mothers over a longer period
3. Give further attention to women who declare dissatisfaction regarding the care they received during childbirth
4. Technologies such as tele-health services may help to reduce the burden of PPD and CB-PTSD (6).

## References

- (1) World Health Organization. The prevention and elimination of disrespect and abuse during facility-based childbirth: WHO statement. World Health Organization, 2014.
- (2) Rudigoz RC, Milliez J, Ville Y, Crepin G, M.M. Bégué, Bouchard, et al. De la bientraitance en obstétrique. Bull Académie Natl Médecine. 1 sept 2018;202(7):1323-40.
- (3) Gaucher L, Huissoud C, Ecochard R, Rudigoz RC, Cortet M, Bouvet L, et al. Women's dissatisfaction with inappropriate behavior by health care workers during childbirth care in France: A survey study. Birth. 2021;48(3):328-37.
- (4) Beck CT, Gable RK, Sakala C, Declercq ER. Posttraumatic Stress Disorder in New Mothers: Results from a Two-Stage U.S. National Survey. Birth. 2011;38(3):216-27.
- (6) Aksoy Derya Y, Altıparmak S, Akça E, Gökbulut N, Yılmaz AN. Pregnancy and birth planning during COVID-19: The effects of tele-education offered to pregnant women on prenatal distress and pregnancy-related anxiety. Midwifery. janv 2021;92:102877.