

Supplemental Material

Messant *et al.*

Manganese excess and deficiency affect chloroplast structure and the photosynthetic apparatus in *Marchantia polymorpha*

Table S1 Chlorophyll and Mn content in thalli grown in Mn excess

sample	mg Chl/g DW	mg Mn/g DW	$\mu\text{g Mn/mg Chl}$	$\mu\text{g Mn in Chloroplast/g DW}$
Crtl (agar)	$14,6 \pm 1,2$	0,231	2,1	$30,3 \pm 0,10$
30x	$10,6 \pm 1.7^*$	2,714	23,6	$250,8 \pm 0.09^{***}$
200x	$8,8 \pm 1.3^*$	23,116	178,7	$1566,2 \pm 0.06^{***}$

Chlorophyll content and dry weight was determined by three consecutive acetone extractions (N=6). Values of Mn content are the same as in Figs 1, 2 of the main manuscript. Stars indicate significant differences, compared to the control, based on a Mann and Whitney test (* $p < 0.05$, *** $p < 0.001$). Chlorophyll content was determined according to Porra and Scheer (2019).

Messant *et al.*

Manganese excess and deficiency affect chloroplast structure and the photosynthetic apparatus in *Marchantia polymorpha*

Table S2 List of 96 metabolites identified by GC-MS in *Marchantia polymorpha*

List of 96 metabolites identified and quantified in plants grown in Agar Control, 30X, 200X, Starch Control and Starch-Mn condition. N=4 biological replicates. P<0.05 for all values, according to two-way ANOVA test.

Metabolites	Control		30X		200X		Starch+Mn		Starch-Mn	
	Mean	SD	Mean	SD	Mean	SD	Mean	SD	Mean	SD
1,3-propanediol	0.011	0.000	0.012	0.000	0.011	0.000	0.011	0.001	0.011	0.001
1,6-anhydro-glucose	0.005	0.001	0.004	0.000	0.002	0.000	0.002	0.001	0.002	0.001
2,3-butanediol	0.005	0.001	0.005	0.000	0.004	0.000	0.005	0.000	0.004	0.000
2-hydroxypyridine	0.021	0.003	0.017	0.002	0.014	0.001	0.015	0.001	0.012	0.002
3,4-dihydroxymandelic acid	0.003	0.001	0.002	0.000	0.008	0.002	0.002	0.000	0.001	0.000
3-hydroxy-3-methylglutaric acid	0.005	0.000	0.004	0.000	0.003	0.000	0.003	0.001	0.002	0.001
4-hydroxypyridine	0.003	0.000	0.002	0.000	0.002	0.000	0.002	0.000	0.002	0.000
acetohydroxamic acid	0.030	0.004	0.028	0.003	0.034	0.006	0.030	0.005	0.034	0.006
allantoin	0.007	0.004	0.012	0.008	0.008	0.003	0.001	0.001	0.000	0.000
alpha ketoglutaric acid	0.029	0.004	0.006	0.006	0.000	0.000	0.011	0.010	0.010	0.009
arabinose	0.003	0.000	0.003	0.000	0.003	0.000	0.001	0.000	0.001	0.000
arbutin	0.002	0.000	0.002	0.000	0.002	0.000	0.001	0.000	0.000	0.000
aspartic acid	0.750	0.207	0.585	0.114	0.385	0.053	0.086	0.027	0.155	0.130
benzoic acid	0.003	0.000	0.003	0.000	0.003	0.000	0.003	0.000	0.003	0.000
Beta- alanine	0.004	0.001	0.003	0.001	0.004	0.001	0.001	0.000	0.001	0.001
beta-cyano-L-alanine	0.002	0.000	0.004	0.002	0.020	0.007	0.001	0.000	0.001	0.000
beta-sitosterol	0.004	0.001	0.004	0.001	0.004	0.001	0.002	0.001	0.002	0.001
citramalic acid	0.005	0.000	0.004	0.000	0.002	0.000	0.004	0.001	0.004	0.003
citric acid	0.285	0.010	0.295	0.017	0.037	0.005	0.289	0.063	0.247	0.091
citrulline	0.001	0.000	0.001	0.000	0.003	0.001	0.000	0.000	0.000	0.000
D-(+) trehalose	0.053	0.003	0.049	0.008	0.083	0.012	0.036	0.011	0.021	0.008
dehydroascorbic acid	0.007	0.001	0.004	0.000	0.005	0.001	0.001	0.000	0.001	0.000
D-glucose	0.239	0.035	0.252	0.068	0.218	0.058	0.411	0.233	0.234	0.081
D-glucose-6-phosphate	0.015	0.002	0.010	0.003	0.005	0.001	0.010	0.005	0.006	0.003
DL-isoleucine	0.060	0.015	0.061	0.010	0.046	0.014	0.028	0.006	0.023	0.009
D-malic acid	0.453	0.067	0.288	0.051	0.048	0.009	0.654	0.299	0.618	0.257
D-mannitol	0.013	0.010	0.009	0.007	0.009	0.006	0.023	0.022	0.024	0.019
D-mannose	0.005	0.000	0.004	0.000	0.004	0.000	0.045	0.042	0.002	0.000
dopamine (hydroxytyramine)	1.589	0.178	1.144	0.201	1.810	0.252	0.612	0.074	0.260	0.019
D-sorbitol	0.008	0.001	0.007	0.000	0.006	0.000	0.007	0.001	0.006	0.000

D-threitol	0.010	0.003	0.008	0.002	0.008	0.003	0.017	0.013	0.023	0.013
fructose	0.182	0.027	0.203	0.060	0.173	0.045	0.261	0.134	0.166	0.065
fructose 6-phosphate	0.008	0.001	0.006	0.001	0.003	0.001	0.005	0.002	0.003	0.001
fumaric acid	0.180	0.031	0.126	0.030	0.022	0.002	0.070	0.008	0.067	0.028
galactonic acid	0.001	0.000	0.001	0.000	0.000	0.000	0.092	0.088	0.009	0.005
galacturonic acid	0.004	0.000	0.004	0.001	0.008	0.001	0.013	0.008	0.005	0.003
gluconic acid	0.003	0.000	0.003	0.000	0.002	0.000	0.002	0.001	0.002	0.000
glyceric acid	0.016	0.001	0.014	0.001	0.006	0.001	0.016	0.005	0.013	0.006
glycerol	0.014	0.001	0.013	0.001	0.011	0.001	0.011	0.002	0.010	0.002
glycerol 1-phosphate	0.021	0.002	0.016	0.002	0.011	0.002	0.010	0.003	0.007	0.001
glycine	0.007	0.001	0.006	0.001	0.006	0.001	0.002	0.000	0.003	0.001
glycolic acid	0.013	0.001	0.015	0.001	0.014	0.001	0.009	0.000	0.009	0.002
L-(+) lactic acid	0.012	0.001	0.016	0.004	0.012	0.001	0.014	0.003	0.012	0.002
L-alanine	0.010	0.002	0.010	0.002	0.004	0.001	0.003	0.001	0.003	0.002
L-asparagine	0.372	0.021	0.461	0.074	0.478	0.085	0.059	0.036	0.108	0.095
leucrose	0.003	0.000	0.004	0.001	0.005	0.001	0.001	0.000	0.001	0.000
L-glutamic acid	2.642	0.178	2.568	0.065	2.024	0.148	1.143	0.298	1.078	0.449
L-glutamine	0.107	0.013	0.080	0.022	0.202	0.078	0.023	0.019	0.023	0.022
L-homoserine	0.002	0.000	0.002	0.000	0.002	0.000	0.001	0.000	0.000	0.000
L-leucine	0.004	0.001	0.007	0.001	0.007	0.001	0.007	0.002	0.006	0.001
L-lysine	0.003	0.001	0.002	0.001	0.004	0.002	0.001	0.000	0.000	0.000
L-methionine sulfoxide	0.001	0.000	0.001	0.000	0.001	0.000	0.000	0.000	0.000	0.000
L-norleucine	0.059	0.013	0.066	0.015	0.043	0.015	0.025	0.007	0.018	0.005
L-ornithine	0.003	0.001	0.003	0.000	0.007	0.001	0.001	0.000	0.001	0.001
L-proline	0.010	0.002	0.011	0.001	0.009	0.001	0.004	0.000	0.005	0.002
L-serine	0.625	0.028	0.617	0.037	0.616	0.113	0.157	0.040	0.138	0.069
L-threonine	0.080	0.008	0.070	0.010	0.042	0.006	0.028	0.007	0.024	0.010
L-threonine	0.025	0.005	0.036	0.018	0.070	0.019	0.005	0.001	0.004	0.000
L-tryptophan	0.043	0.019	0.036	0.017	0.134	0.035	0.005	0.002	0.003	0.002
L-valine	0.046	0.007	0.054	0.014	0.060	0.013	0.026	0.005	0.022	0.006
maltose	0.002	0.001	0.003	0.000	0.002	0.001	0.084	0.067	0.022	0.011
myo-inositol	0.042	0.003	0.041	0.001	0.031	0.003	0.022	0.005	0.018	0.004
myristic acid	0.005	0.000	0.004	0.001	0.004	0.000	0.005	0.001	0.004	0.000
N-ethylglycine	0.849	0.030	0.888	0.093	1.101	0.039	0.755	0.089	0.743	0.053
N-methylalanine	0.021	0.002	0.670	0.237	1.101	0.038	0.607	0.210	0.743	0.053
norepinephrine (noradrenalin)	0.008	0.002	0.006	0.002	0.020	0.003	0.007	0.003	0.003	0.001
norvaline	0.086	0.015	0.092	0.015	0.069	0.020	0.047	0.008	0.044	0.019
oleic acid	0.005	0.000	0.004	0.001	0.004	0.000	0.004	0.001	0.005	0.001
O-phosphocolamine	0.005	0.001	0.003	0.001	0.002	0.000	0.002	0.001	0.001	0.001
oxalic acid	0.024	0.004	0.023	0.002	0.018	0.003	0.013	0.002	0.013	0.005
palmitic acid	0.146	0.019	0.134	0.025	0.140	0.025	0.164	0.034	0.146	0.021
phenanthrene	0.007	0.001	0.006	0.001	0.007	0.001	0.006	0.000	0.007	0.001
Phenylalanine	0.018	0.002	0.019	0.002	0.009	0.002	0.006	0.003	0.005	0.001
phosphoric acid	0.615	0.138	0.318	0.124	0.093	0.019	0.589	0.176	0.510	0.280
phytol	0.050	0.002	0.046	0.006	0.089	0.024	0.016	0.007	0.011	0.005
porphine	0.032	0.003	0.030	0.002	0.039	0.002	0.029	0.001	0.024	0.001
putrescine	0.003	0.001	0.002	0.000	0.008	0.001	0.000	0.000	0.001	0.000

pyruvic acid	0.006	0.001	0.005	0.000	0.003	0.000	0.001	0.001	0.002	0.001
rhamnose	0.004	0.000	0.004	0.001	0.008	0.001	0.002	0.000	0.001	0.000
shikimic acid	0.209	0.043	0.168	0.031	0.068	0.010	0.265	0.106	0.127	0.074
stearic acid	0.076	0.017	0.073	0.021	0.087	0.019	0.098	0.022	0.098	0.023
stigmasterol	0.022	0.003	0.023	0.003	0.021	0.002	0.009	0.002	0.007	0.002
succinic acid	0.074	0.006	0.080	0.008	0.040	0.007	0.093	0.019	0.096	0.041
Sucrose	2.261	0.326	2.004	0.232	1.473	0.293	1.571	0.421	1.042	0.277
tagatose	0.005	0.000	0.004	0.000	0.074	0.071	0.079	0.046	0.085	0.084
talose	0.005	0.000	0.004	0.000	0.004	0.000	0.004	0.001	0.002	0.000
threonic acid	0.102	0.010	0.120	0.016	0.098	0.008	0.082	0.008	0.062	0.010
Threonic acid-1,4-lactone	0.007	0.001	0.008	0.001	0.016	0.003	0.004	0.000	0.003	0.001
trans-aconitic acid	0.475	0.054	0.362	0.049	0.031	0.006	0.407	0.151	0.324	0.151
tyramine	0.073	0.006	0.074	0.015	0.106	0.020	0.076	0.036	0.021	0.012
tyrosine	0.044	0.007	0.043	0.007	0.052	0.013	0.018	0.009	0.011	0.008
uracil	0.003	0.001	0.003	0.000	0.002	0.000	0.002	0.000	0.002	0.000
urea	0.011	0.002	0.010	0.002	0.003	0.001	0.005	0.002	0.002	0.001
xylitol	0.005	0.000	0.003	0.001	0.001	0.000	0.001	0.000	0.001	0.000
xylose	0.004	0.000	0.004	0.000	0.002	0.000	0.002	0.000	0.001	0.000
xylulose	0.007	0.000	0.005	0.000	0.003	0.000	0.004	0.001	0.003	0.001

Messant *et al.*

Manganese excess and deficiency affect chloroplast structure and the photosynthetic apparatus in *Marchantia polymorpha*

Table S3 Metabolites significantly decreased in Starch condition compared to Agar Control in *Marchantia polymorpha*

List of 41 metabolites significantly different between Agar Control and both Starch Control and Starch-Mn conditions combined. A statistical test ANOVA 2 was conducted. Absolute values represent the mean of 4 biological replicates for each condition. The column Starch (+/-) represents the mean between the 4 biological replicates of Starch Control and Starch-Mn conditions together.

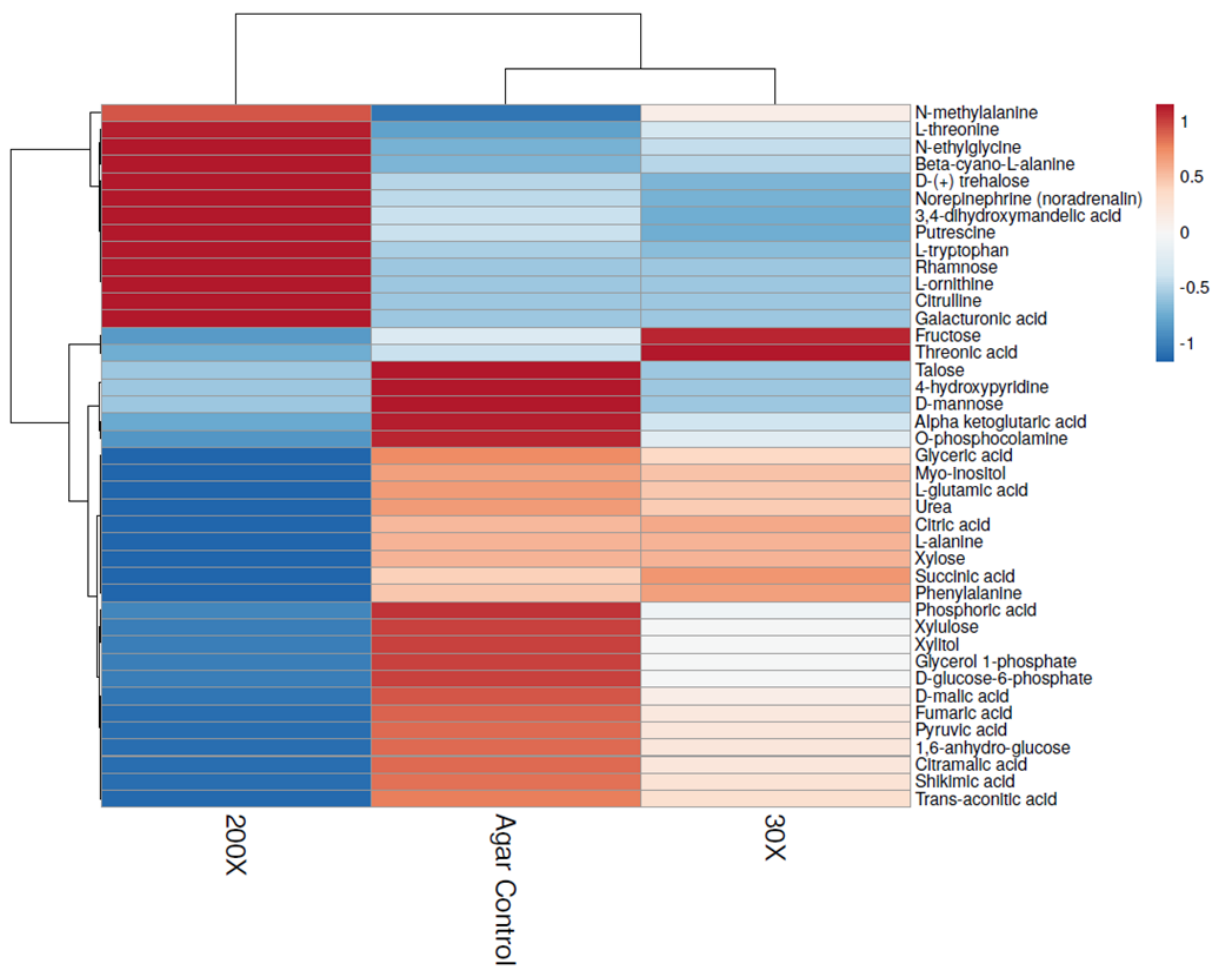
Metabolites	Agar Control		Starch (+/-)	
	Mean	SD	Mean	SD
1,6-anhydro-glucose	0.005	0.001	0.002	0.001
2-hydroxypyridine	0.021	0.003	0.013	0.003
3,4-dihydroxymandelic acid	0.003	0.001	0.001	0.001
arabinose	0.003	0.000	0.001	0.001
arbutin	0.002	0.000	0.001	0.000
aspartic acid 2	0.750	0.207	0.120	0.177
beta-cyano-L-alanine	0.002	0.000	0.001	0.000
citrulline 2	0.001	0.000	0.000	0.000
D-(+) trehalose	0.053	0.003	0.029	0.020
dopamine (hydroxytyramine)	1.589	0.178	0.436	0.213
fumaric acid	0.180	0.031	0.068	0.038
glycerol 1-phosphate	0.021	0.002	0.008	0.005
L-alanine 1	0.010	0.002	0.003	0.003
L-asparagine 2	0.372	0.021	0.083	0.136
leucrose	0.003	0.000	0.001	0.001
L-glutamic acid 3 (dehydrated)	2.642	0.178	1.110	0.707
L-glutamine 1	0.107	0.013	0.023	0.038
L-homoserine 2	0.002	0.000	0.000	0.000
L-lysine 2	0.003	0.001	0.000	0.001
L-methionine sulfoxide 3	0.001	0.000	0.000	0.000
L-norleucine 1	0.059	0.013	0.022	0.012
L-serine 1	0.625	0.028	0.148	0.105
L-threonine 1	0.080	0.008	0.026	0.016
L-valine 2	0.046	0.007	0.024	0.010
myo-inositol	0.042	0.003	0.020	0.009
N-methylalanine	0.021	0.002	0.675	0.293

O-phosphocolamine	0.005	0.001	0.002	0.001
Phenylalanine 1	0.018	0.002	0.005	0.004
phytol 1	0.050	0.002	0.013	0.012
putrescine	0.003	0.001	0.000	0.001
pyruvic acid	0.006	0.001	0.001	0.002
rhamnose 1	0.004	0.000	0.002	0.001
stigmasterol	0.022	0.003	0.008	0.005
talose 1	0.005	0.000	0.003	0.002
threonic acid	0.102	0.010	0.072	0.019
Threonic acid-1,4-lactone	0.007	0.001	0.003	0.002
tyrosine 2	0.044	0.007	0.015	0.016
urea	0.011	0.002	0.004	0.003
xylitol	0.005	0.000	0.001	0.001
xylose 2	0.004	0.000	0.002	0.001
xylulose	0.007	0.000	0.003	0.001

Messant *et al.*

Manganese excess and deficiency affect chloroplast structure and the photosynthetic apparatus in *Marchantia polymorpha*

Figure S1: Metabolite analysis in *M. polymorpha* grown in Mn excess condition.

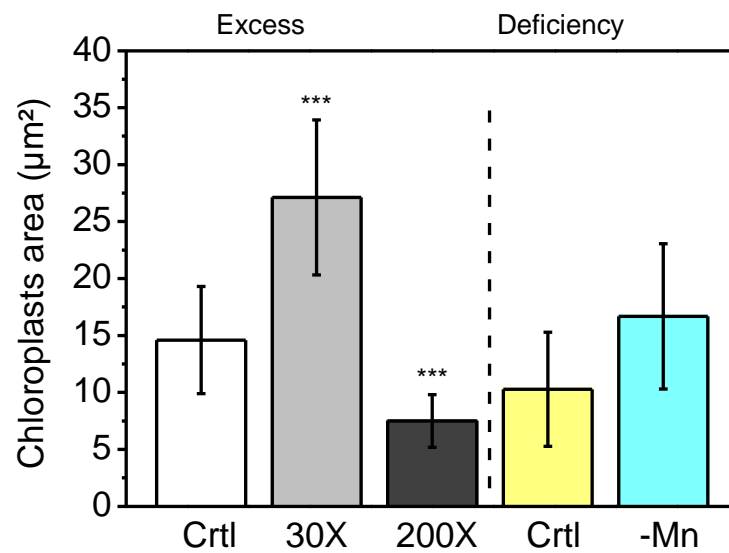


Heatmap showing significantly different metabolites in whole thalli grown under Control, 30X and 200X conditions. This figure is a result of an ANOVA 2 statistical test. The colour scale represents the changes between the three conditions taking into account the maximum and the minimum value for a given metabolite in each condition.

Messant *et al.*

Manganese excess and deficiency affect chloroplast structure and the photosynthetic apparatus in *Marchantia polymorpha*

Figure S2 Estimation of the chloroplast size under the different growth conditions

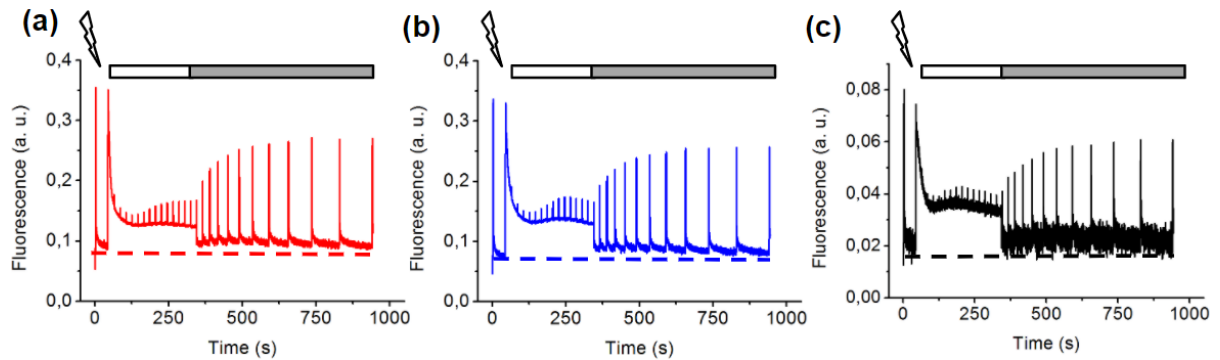


Area of the chloroplasts was determined from super-resolution fluorescence microscopy images using ImageJ. Number of images analysed: Ctrl agar: N=12, 30X: N=12; 200X: N=23; Ctrl starch: N=25, starch -Mn : N=7. Stars indicate significant differences, compared to the control, based on a Mann and Whitney test (***) p<0.001).

Messant *et al.*

Manganese excess and deficiency affect chloroplast structure and the photosynthetic apparatus in *Marchantia polymorpha*

Figure S3 Chlorophyll fluorescence at room temperature in *M. polymorpha* grown in control and Mn excess conditions

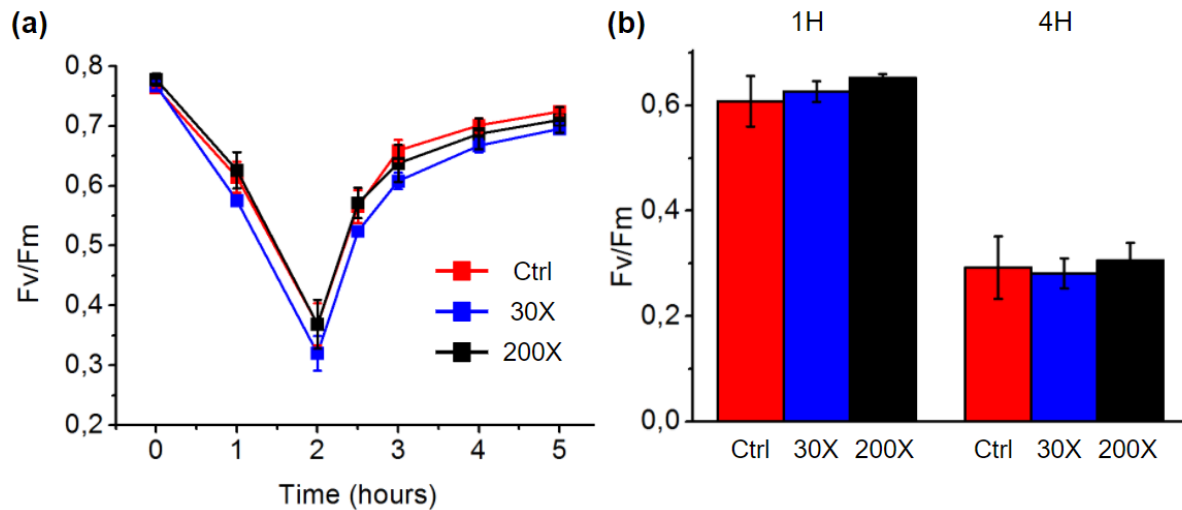


Induction and recovery of chlorophyll measured on thalli grown in Control (red), 30X (blue) and 200X (black) conditions. After 5 min dark adaptation, thalli were exposed to a measuring light to determine the minimum fluorescence level (dashed lines) and to a saturating flash to obtain the maximum fluorescence level. Actinic light ($50 \mu\text{mol photons m}^{-2} \text{s}^{-1}$) was applied for 5 min (white bar). Recovery in the dark was followed (grey bar). Representative curves are shown.

Messant *et al.*

Manganese excess and deficiency affect chloroplast structure and the photosynthetic apparatus in *Marchantia polymorpha*

Figure S4 Photoinhibition of photosystem II in *M. polymorpha* grown in control and Mn excess condition in the presence and absence of lincomycin

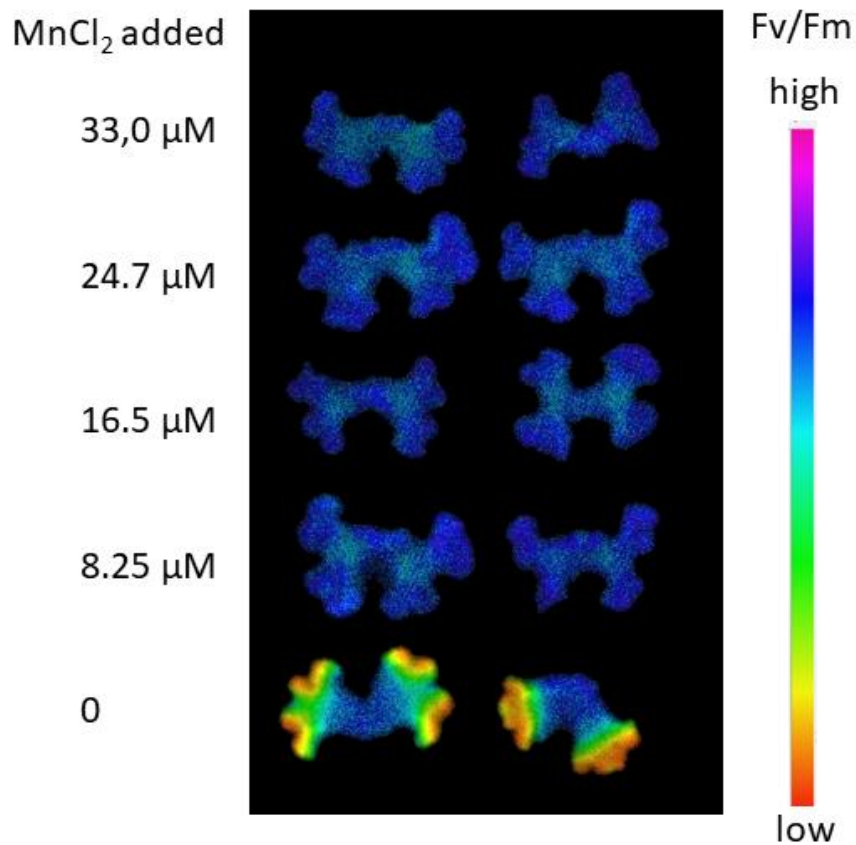


(a) Photoinhibition without lincomycin was measured in thalli cultivated in Control (red), 30X (blue) and 200X (black) conditions. Fv/Fm was followed on plants exposed to a strong light ($800 \mu\text{mol photons m}^{-2}\text{s}^{-1}$) for 3h and during the recovery at room light. (b) Fv/Fm was recorded during photoinhibition of thalli preincubated with lincomycin x (N=3, biological replicates).

Messant *et al.*

Manganese excess and deficiency affect chloroplast structure and the photosynthetic apparatus in *Marchantia polymorpha*

Figure S5 Chlorophyll fluorescence (Fv/Fm) in *M. polymorpha* grown on starch plates in low Mn concentrations

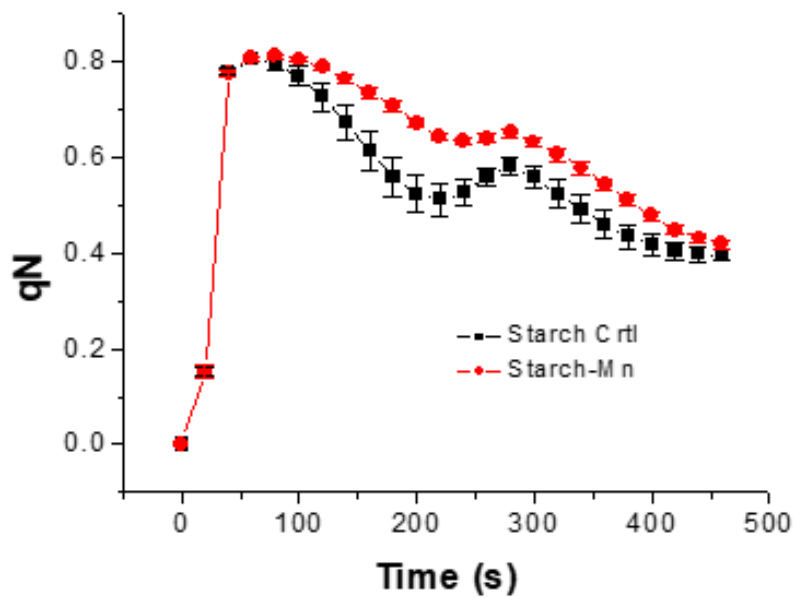


Thalli were grown for 2 weeks on standard medium before transferred for 1 week to starch media with the addition of the indicated Mn concentration. After 1 week growth on starch medium, thalli were dark-adapted for 5 min before Fv/Fm values were determined using an Imaging-PAM (Walz, Elleftrich, Germany).

Messant *et al.*

Manganese excess and deficiency affect chloroplast structure and the photosynthetic apparatus in *Marchantia polymorpha*

Figure S6 qN determination in the presence of lincomycin in *Marchantia polymorpha* grown on starch in control and Mn-deficient conditions



Thalli were incubated for 4 h in lincomycin solution (1 g L^{-1}) prior to the measurements. After 5 min dark adaptation, thalli were exposed to measuring light and to saturating flashes. Actinic light ($55\ \mu\text{mol quanta m}^{-2}\text{s}^{-1}$) was applied during 5 min. N=4.