



**HAL**  
open science

## A dual perception of the dynamics of the Nunavik territory

Mathias Leurent, Orsane Rousset, Fabienne Joliet, Thora Herrmann, Najat Bhiry, Armelle Decaulne

► **To cite this version:**

Mathias Leurent, Orsane Rousset, Fabienne Joliet, Thora Herrmann, Najat Bhiry, et al.. A dual perception of the dynamics of the Nunavik territory. International Symposium of LabEx DRIIHM 2023, Jun 2023, Strasbourg, France. , 2023, 10.34972/driihm-b6481f . hal-04171153

**HAL Id: hal-04171153**

**<https://hal.science/hal-04171153v1>**

Submitted on 27 Jul 2023

**HAL** is a multi-disciplinary open access archive for the deposit and dissemination of scientific research documents, whether they are published or not. The documents may come from teaching and research institutions in France or abroad, or from public or private research centers.

L'archive ouverte pluridisciplinaire **HAL**, est destinée au dépôt et à la diffusion de documents scientifiques de niveau recherche, publiés ou non, émanant des établissements d'enseignement et de recherche français ou étrangers, des laboratoires publics ou privés.

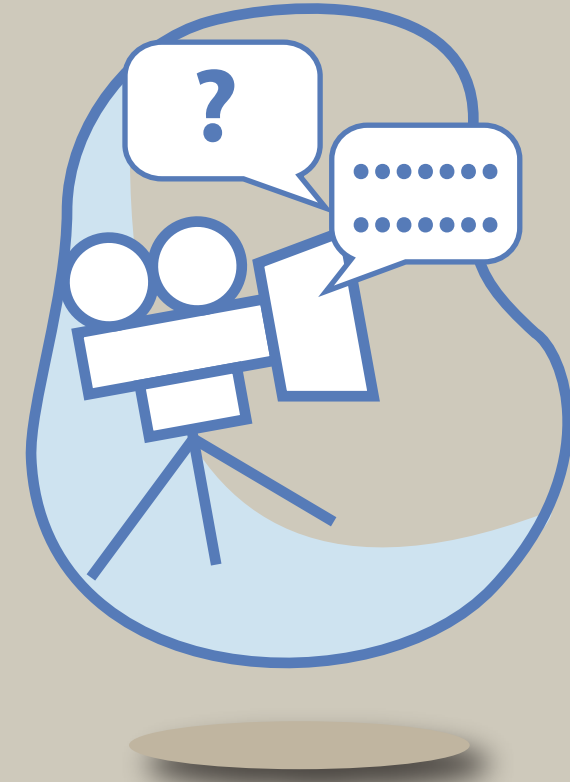
# A dual perception of the territory dynamics in Nunavik

Mathias Laurent<sup>1</sup>, Orsane Rousset<sup>2</sup>, Fabienne Joliet<sup>3</sup>, Laine Chanteloup<sup>4</sup>, Thora Herrmann<sup>5</sup>, Najat Bhiry<sup>6</sup>, Armelle Decaulne<sup>7</sup>

<sup>(1)</sup> Aix-Marseille Université, Marseille, France, <sup>(2)</sup> Université de Bretagne Occidentale, France, <sup>(3)</sup> Institut Agro, Angers, France, <sup>(4)</sup> Université de Lausanne, Switzerland, <sup>(5)</sup> University of Oulu, Oulu, Finland  
<sup>(6)</sup> Département de Géographie, Université Laval, Centre d'études nordiques, Québec, Canada, <sup>(7)</sup> CNRS LETG, Nantes, France



## A territory observed through two projects



The **Nuna project** aims to shed light, through Inuit images and words, on the meaning of "nuna" (territory in Inuktitut) for the Indigenous peoples today: the modes of territoriality, naturalness and Inuit land-and sea-based activities and interconnectedness with the surrounding environment that take shape between tradition and contemporaneity, are especially analyzed.



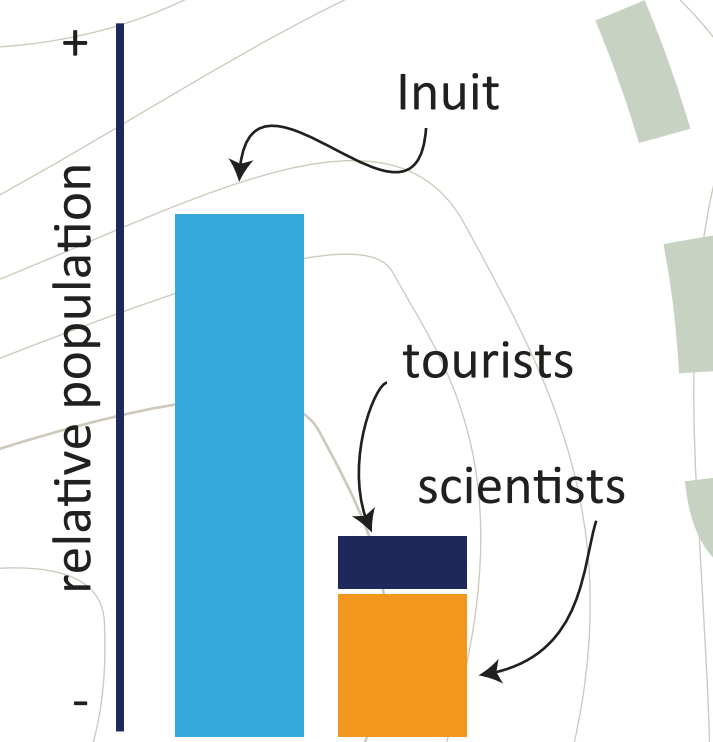
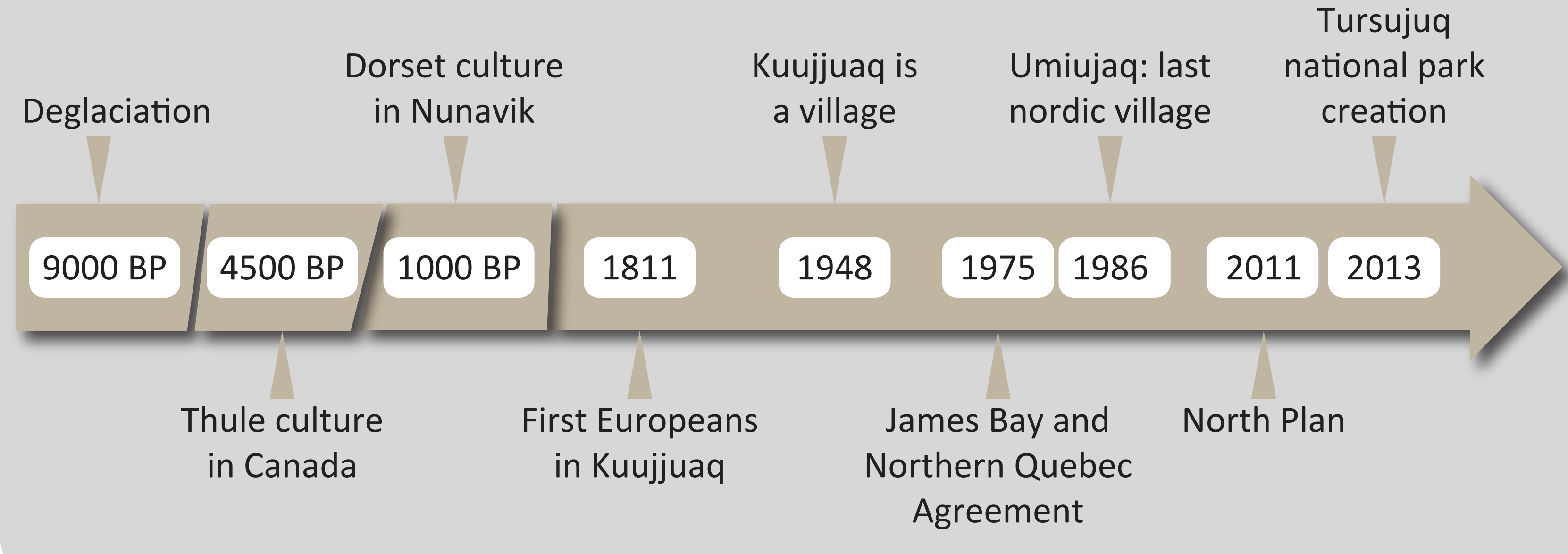
The **MOVE project** improves the knowledge of slope geodynamics and their activity in a context of increasing global warming. Its objective is to characterize the hazard and vulnerability situations, in order to define and quantify the risk represented by gravity hazards, such as snow avalanches. The village surroundings, and national parks, are especially investigated.

## From the village to the land: a territory traversed by Indigenous peoples and exogenous populations

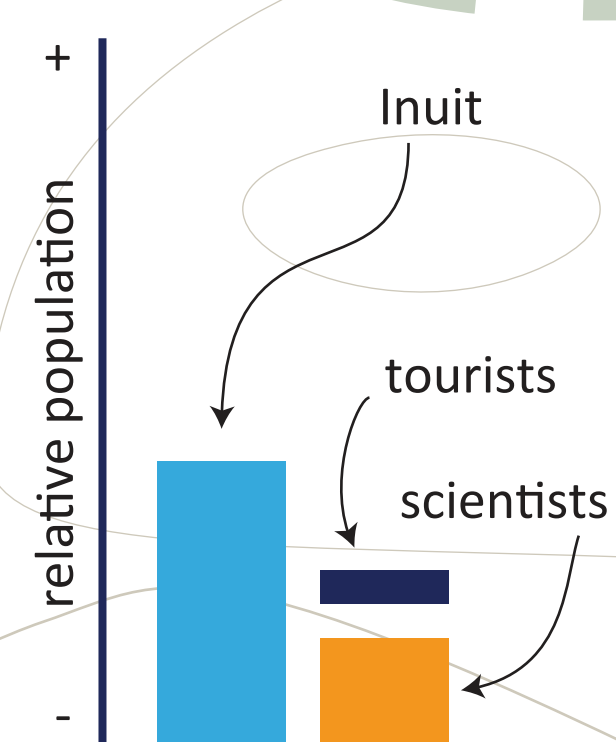
"Our people still depend on the environment and what it has to offer, that we still need to sustain ourselves from the animals that give us food and clothing. Life is very different now, but our ways and our need to be with the land remain the same" (Johnny Peters, former vice-president of the Makivik corporation, 2013).

Inuit and Cree now live in villages. However, the population goes on the land for hunting, fishing, trapping, and having all kinds of activities, to reconnect with traditional knowledge. Their presence decreases however with the distance from the village, with stays organized for elders and school pupils, mixing generations. Since the creation of Tursujuq national park in 2013, tourists are also present on the territory. Researchers are active on different topics, both in the village, its close surroundings and also farther inland.

## Abrupt changes over time for the territory of Nunavik



Workshops with school pupils in the village underline their wish to be on the land, practising traditional activities and enjoying their natural landscapes. Nevertheless, such escapes to the land are often rather close to the village.



To describe the functioning of slope processes in Nunavik, three sites are investigated, in the village, its surroundings, and in a national park. Each site has several slope types, which are analysed at different time steps.

Inuit organise land classes, to enable people to reconnect with their territory. More particularly, for the elders it gives the opportunity to perpetuate a way of life. For the young people, it enables the discovery.

