



**HAL**  
open science

## Archaeobotany of Great Zimbabwe

Alice J Williams, Mica Jones, Russell Kapumhua, Michael Charles, Amy Bogaard, And Shadreck Chirikure

► **To cite this version:**

Alice J Williams, Mica Jones, Russell Kapumhua, Michael Charles, Amy Bogaard, et al.. Archaeobotany of Great Zimbabwe. 10th International Workshop for African Archaeobotany, Jun 2023, Paris (MNHN), France. . hal-04159869

**HAL Id: hal-04159869**

**<https://hal.science/hal-04159869v1>**

Submitted on 17 Jul 2023

**HAL** is a multi-disciplinary open access archive for the deposit and dissemination of scientific research documents, whether they are published or not. The documents may come from teaching and research institutions in France or abroad, or from public or private research centers.

L'archive ouverte pluridisciplinaire **HAL**, est destinée au dépôt et à la diffusion de documents scientifiques de niveau recherche, publiés ou non, émanant des établissements d'enseignement et de recherche français ou étrangers, des laboratoires publics ou privés.

# Archaeobotany of Great Zimbabwe



Outside the Great Enclosure at Great Zimbabwe

Dr Alice J. Williams\*, Dr Mica Jones, Dr Russell Kapumhua, Prof Mike Charles, Prof Amy Bogaard, Prof Shadreck Chirikure

University of Oxford

\*all photographs by AJW

## Archaeobotanical record from Zimbabwe

The archaeobotanical record from Zimbabwe includes charred remains from Early Holocene through to Iron Age sites, often recovered by dry-sieving soil samples (Jonsson, 1998). More focused efforts to recover archaeobotanical macrofossils at Iron Age sites have been conducted at Great Zimbabwe (Jonsson, 1998; Chikumbirike, et al. 2016) and Mtanye (Mushangwe, 2019). However, systematic flotation of samples has largely been absent, and we lack detailed information about the plants present throughout the occupation of sites.

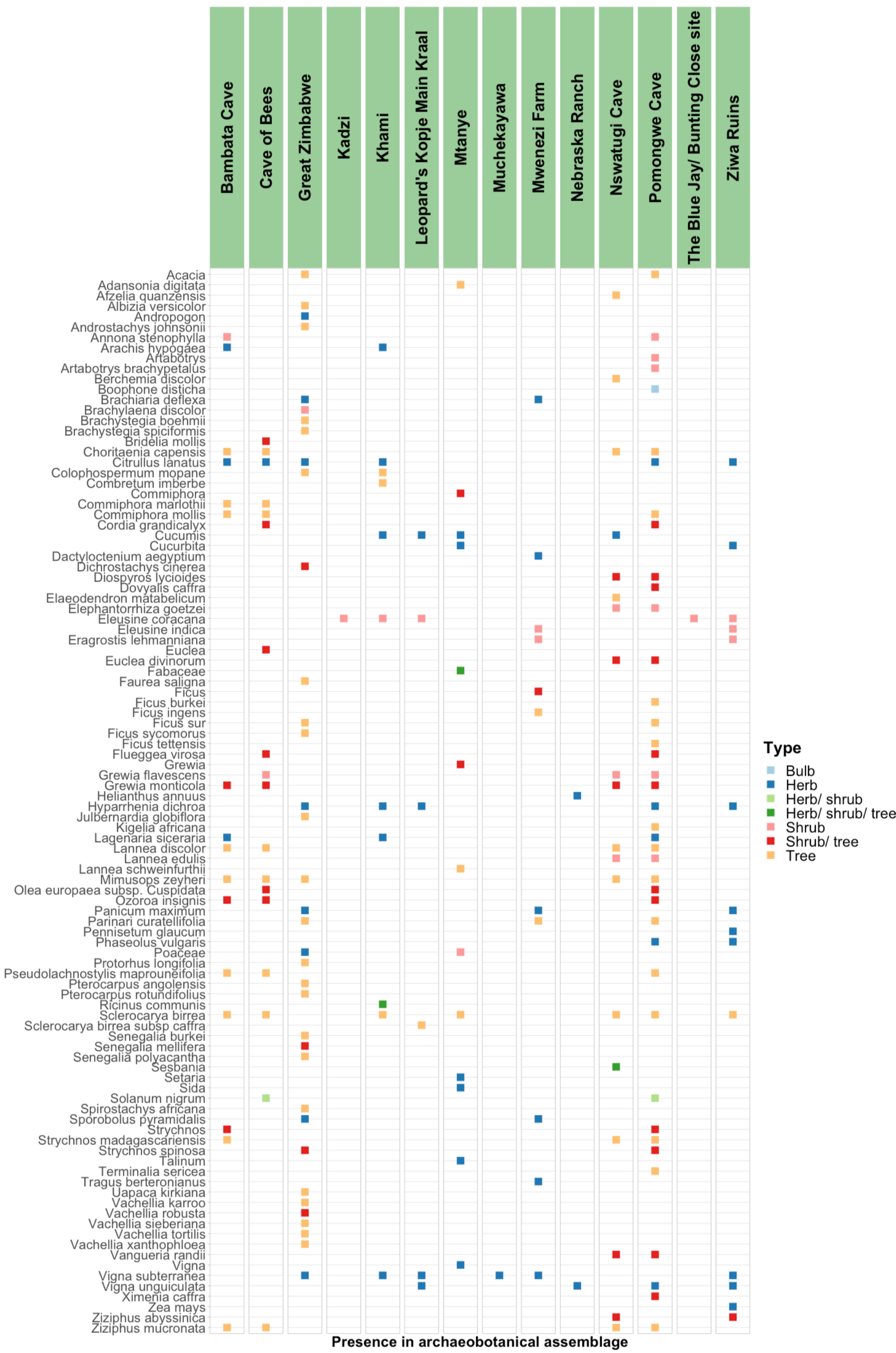
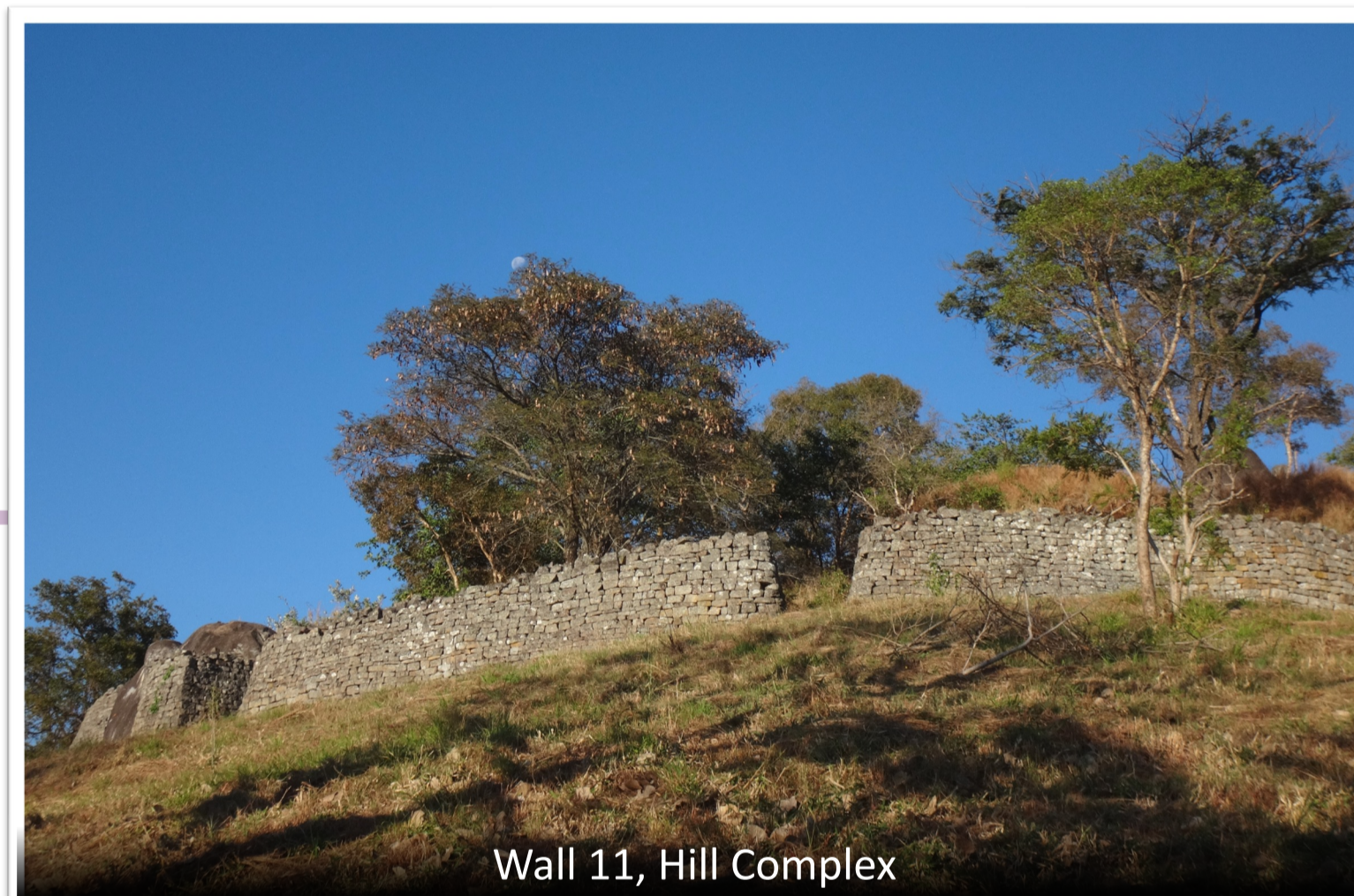


Figure 1 Plant species present in archaeological assemblages from archaeological sites across Zimbabwe. All levels and dates associated with sites, except modern layers, are included. Adiantic material has been excluded.

Data from Jonsson (1998), Chikumbirike, Bamford, & Esterhuysen (2016), Mushangwe (2019). Additional references cited by Jonsson (1998): Cooke (1953), Huffman (1974), Robinson (1959, 1961a,b), Soper & Chirawu (1996), Summers (1958), Walker (1995).



## Archaeobotanical record from Great Zimbabwe

The Great Zimbabwe archaeobotanical record currently includes macrobotanical remains recovered by Jonsson (1998) and charcoal remains analysed by Chikumbirike, et al. (2016) (Figure 2). Jonsson (1998) recovered macrobotanical remains from outside the northern wall of the Hill Complex (Trench 1 and 2) by using flotation to process 2L soil samples from every ~10cm level.

Table 1 Dates associated with archaeobotanical material in Figure 1.

Site	Period(s)	Age estimate(s)
Bambata Cave	Gwanda Amadzimba Middle Stone Age	2100-4000 BP
Cave of Bees	Gokomere Early Holocene Late Pleistocene	
Great Zimbabwe	19 <sup>th</sup> Century AD 15 <sup>th</sup> Century AD Early Iron Age	320-1900 AD 1150-1600 AD
Kadzi	4 <sup>th</sup> Century AD 8 <sup>th</sup> Century AD	
Khami		1300-1550 AD
Leopard's Kopje Main Kraal	Woodlandale, Mambo, Zhizo	600-1050 AD
Mtanye	Iron Age	
Mwenezi Farm		670-1820 AD
Nebraska Rance	Zimbabwe Period IV	1275-1550 AD
Nswatugi Cave	Early-Mid Holocene	10000-6000 BP
Pomongwe Cave	Mid-Late Holocene Early-Mid Holocene	
The Blue Jay/Bunting Close	Woodlandale	
Ziwa Ruins		800-1800 AD

Table 2 Dates associated with archaeobotanical material in Figure 2.

Great Zimbabwe	Period(s)	Age estimate(s)
2030 BD, furnace	19 <sup>th</sup> Century AD	1800 AD
Barrier Hut	Early Iron Age to 15 <sup>th</sup> Century	400-1450 AD
Great Enclosure		1800 AD
Hill Complex	Early Iron Age to 15 <sup>th</sup> Century	320-1900 AD
House D, floor h1, Hill Complex		1280 AD
Ridge Ruin	After decline of Great Zimbabwe	
Terrace Area, foot of Hill Complex		
Trench 1	1150-1600 AD	
Trench 2	1150-1600 AD	

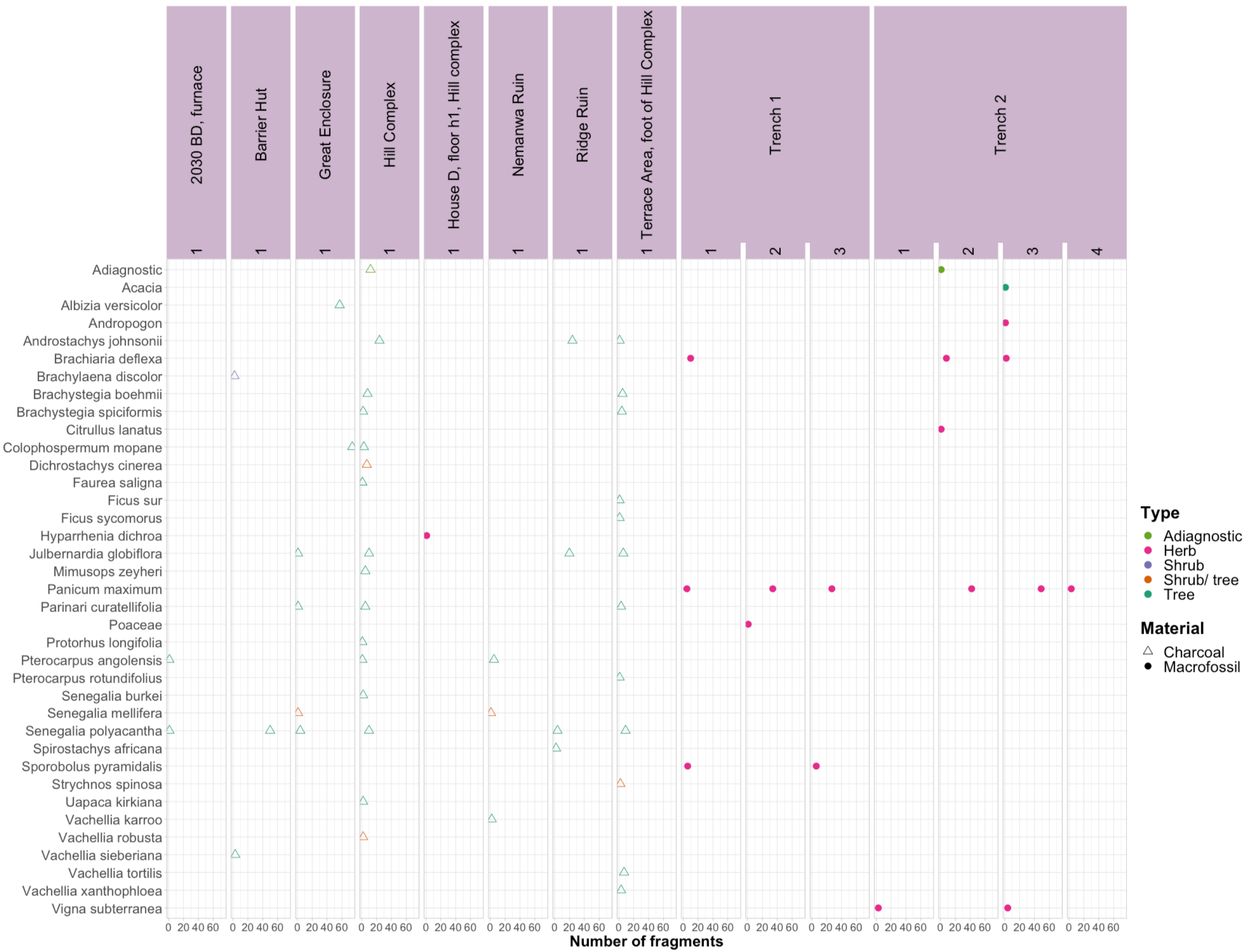


Figure 2 Archaeobotanical assemblage data from Great Zimbabwe. Macrofossil assemblages from Jonsson (1998), and Robinson (1961); charcoal assemblage from Chikumbirike, Bamford, & Esterhuysen (2016).

## Current project plans

As part of the project, 'Archaeometry and social formation in southern Africa', led by Professor Shadreck Chirikure, we are undertaking excavations at the World Heritage site of Great Zimbabwe. The project aims to understand the precolonial urban landscapes of Southern Africa, currently centring on the economy and social networks of Great Zimbabwe.

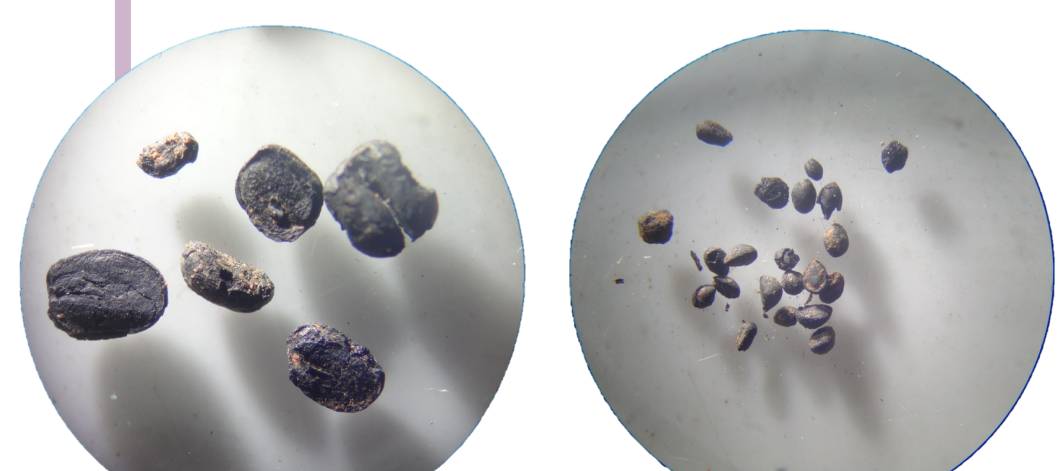
While pottery, metal, cattle bones, and glass beads are abundant at Great Zimbabwe, the archaeobotanical remains are mostly unstudied. We are systematically sampling contexts for macro- and micro-botanical remains. Excavation in August 2022 focused on the outside of Wall 11 of the Hill Complex, and further excavation will be undertaken later this year.

### Stage 1: Foundational data collection

- Use flotation to process existing and future samples from excavation (see images to left):
  - 0.3mm mesh/ chiffon
  - 1mm heavy residue mesh
- Collect modern plant samples for comparison with the archaeobotanical material
- Identify macrobotanical remains using modern reference materials and comparison with remains other archaeological sites
- Use archaeobotanical materials for radiocarbon dating levels of excavation, ideally using charred seeds where possible

### Stage 2: The Bigger Picture

- What plants species were people using and consuming at Great Zimbabwe?
  - Macrobotanical species identification
  - Phytolith analysis
- Were crops were locally grown or imported from further afield?
  - Analysis of plant assemblage and agricultural artefacts
  - Comparison of plant species with modern distribution
  - Isotope analysis
- What were the wider environmental conditions of Great Zimbabwe?
  - Analysis of plant species present at site and comparison with known growing conditions
  - Pollen analysis
- What was the economy of Great Zimbabwe?
  - Synthesis of archaeobotanical, zooarchaeological, and material data
- Did crops, plant use, or the environmental conditions change during the pre-colonial occupation of Great Zimbabwe? If so, why did these changes occur? Could changes be associated with population migration?
- How does plant use during the Iron Age compare to modern plant use in Zimbabwe?
  - Comparison with modern crops and ethnobotanical studies



Photographs of charred seeds from the Wall 11, Great Zimbabwe Hill Complex (AJW 2023)



Bucket flotation of soil samples from Wall 11 of the Hill Complex, excavated August 2022

Assorted grain being sold at Masvingo market, June 2023

Air-drying flat at the Great Zimbabwe Conservation Centre

Wall 11, Hill Complex

Ficus sp. species growing within the GZ heritage area

Strychnos spinosa growing at the GZ Conservation Centre

View of the Hill Complex from within the Great Enclosure

Brown sadza (finger millet) and vegetables

Mimosa zeyheri growing within the Great Enclosure