



**HAL**  
open science

## Gradient-based metamodel optimization for the design of 3F3 Ferrites Core in a WPT system

Paul Lagouanelle, Charles Boulitrop, Lionel Pichon, F. Freschi, Marc Lambert

► **To cite this version:**

Paul Lagouanelle, Charles Boulitrop, Lionel Pichon, F. Freschi, Marc Lambert. Gradient-based metamodel optimization for the design of 3F3 Ferrites Core in a WPT system. COMPUMAG 2023, the 24th International Conference on the Computation of Electromagnetic Fields, May 2023, Kyoto, Japan. hal-04153335

**HAL Id: hal-04153335**

**<https://hal.science/hal-04153335v1>**

Submitted on 2 Aug 2023

**HAL** is a multi-disciplinary open access archive for the deposit and dissemination of scientific research documents, whether they are published or not. The documents may come from teaching and research institutions in France or abroad, or from public or private research centers.

L'archive ouverte pluridisciplinaire **HAL**, est destinée au dépôt et à la diffusion de documents scientifiques de niveau recherche, publiés ou non, émanant des établissements d'enseignement et de recherche français ou étrangers, des laboratoires publics ou privés.

# Gradient-based Metamodel optimization for the design of 3F3 Ferrites Core in a WPT system

Paul Lagouanelle<sup>1,2</sup>, Charles Boulitrop<sup>2</sup>, Lionel Pichon<sup>2</sup>, Fabio Freschi<sup>1</sup> and Marc Lambert<sup>2</sup>

<sup>1</sup> Dipartimento Energia, Politecnico di Torino, 10129 Torino, Italy

<sup>2</sup>GeePs – Group of electrical engineering - Paris, UMR CNRS 8507, CentraleSupélec, Université Paris-Saclay, Sorbonne Université, 3 & 11 rue Joliot-Curie, Plateau de Moulon 91192 Gif-sur-Yvette, France

This paper shows the useful combination of a gradient-based particle swarm optimization (GPSO) method with a metamodeling process in order to save computation time for the design of a Wireless Power Transfer (WPT) system for automotive applications. The goal of this analysis has been to investigate new configurations for 3F3 ferrite cores in an existing WPT system regarding both the coupling factor and the ferrite volumes. An innovative gradient-based multi-objective optimization method has been coupled to an adaptive sampling algorithm for Polynomial-Chaos Kriging metamodeling.

*Index Terms*—Metamodeling, Optimization methods, Wireless power transmission.

## I. INTRODUCTION

Metamodels have been initially developed to perform sensitivity analysis at a low computation cost. They are widely used for various modeling applications, and are especially handy for trade-off optimization problems on complex computational models. The main interest of using an accurate metamodel for optimization is its direct analytical expression which can be called instead of the real model for computing many datapoints. In the field of electromagnetics, many metamodel-based optimization have already been developed such as Kriging-based optimization [1] or PCE-based optimization [2]. The novelty of the metamodel-based optimization presented here consists in extracting the gradient of the cost function directly from its analytical expression. Indeed, instead of calling the PCK predictor during the optimization process, the gradient is directly computed from the meta-parameters, thus, saving a lot of computation time in the case of complex high-dimensional models. The work aims at investigating new configurations for the design of 3F3 ferrite cores on an available WPT system [3] which had not been done before.

## II. OPTIMIZATION PROBLEM

### A. Optimization method

The considered surrogate model consists in a combination of a Polynomial Chaos Expansion (PCE) and a Gaussian process (Kriging) : a Polynomial-Chaos Kriging (PCK) metamodel. An accurate predictor can be computed from a given parameter space using a previously developed active learning algorithm, which combines PCK with an adaptive sequential sampling method based on the quad-tree algorithm [4]

The optimization is performed by the Gradient Particle Swarm Optimization (GPSO) which adds a local gradient-based term to the motion equation of particles in the PSO optimization [5]. The gradient computation is usually a heavy burden but thanks to the PCK predictor it can be performed easily. Indeed, the main advantage of using a PCE-based metamodel is its direct analytical expression which allows an easy computation of its gradient [6].

### B. WPT model

The combination of an already developed active learning metamodeling algorithm with the aforementioned GPSO optimization method has been used for finding an optimal design for the 3F3 ferrites of an existing WPT system [3]. Thanks to this fast and accurate optimization method, this problem, never treated before on such a WPT system, could be computed easily. The considered relevant parameters, displayed on figure 1, are the  $(x_f, y_f)$  position of the ferrite along with its dimensions  $(w_f, h_f, l_f)$ . Both ferrites are taken symmetrical regarding  $(O_R, y, z)$ .

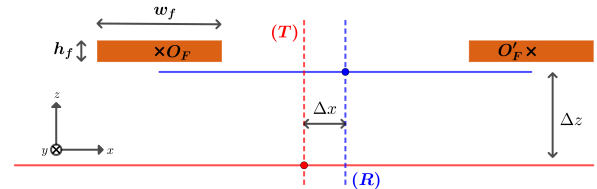


Fig. 1. Relevant geometrical parameters in the plane  $(x, z)$  for the optimization problem

The objectives of the geometry optimization are to :

- Maximize:  $k = \frac{M}{\sqrt{L_R L_T}}$  the coupling factor between the transmitting coil (self-inductance  $L_T$ ) and the receiving coil (self-inductance  $L_R$ ) with  $M$  the mutual inductance
- Minimize:  $V = w_f \cdot h_f \cdot l_f$  the ferrite volume used in the design

## III. RESULTS

### A. Optimization

A prior global sensitivity analysis and single-objective optimization (maximizing  $k$ ) has been conducted on the metamodel, built with  $n_{samples} = 517$  and a  $LOO \simeq 6.907 \cdot 10^{-10}$ . The results are displayed on table I. Due to the low influence of the size parameters on the model regarding the ferrite position,

an evident factor simplification has been made with  $x_f$  and  $y_f$  set to their nominal values for the multi-objective optimization.

TABLE I  
OPTIMIZED PARAMETERS FOR MAXIMIZING THE COUPLING FACTOR  $k$  WITH THEIR SOBOLO' INDICES ( $LOO \simeq 6.907 \cdot 10^{-10}$ ,  $n_{samples} = 517$ )

variable	value	S <sup>T</sup>	description
$w_f$	0.1167 m	$5.856 \cdot 10^{-5}$	ferrite width
$h_f$	0.0304 m	$7.004 \cdot 10^{-5}$	ferrite height
$l_f$	0.1760 m	$7.727 \cdot 10^{-5}$	ferrite length
$x_f(\Delta x = 0)$	0.2627 m	0.881	$x$ position of the ferrite
$y_f(\Delta y = 0)$	-0.0049 m	0.161	$y$ position of the ferrite

For the multi-objective optimization on the size parameters only ( $w_f, h_f, l_f$ ) for the ferrite cores, an accurate metamodel ( $n_{samples} = 35$ ,  $LOO \simeq 3.698 \cdot 10^{-5}$ ) has been built for an unidimensional output : the coupling factor  $k$ . The two objectives are to minimize both  $1 - k$  and the ferrite volume  $V$ . The Pareto front is displayed on figure 2. Due to convexity of the Pareto front, the knee point solution ( $k = 0.0950, V = 5.806 \cdot 10^{-4} \text{m}^3$ ) has been chosen as the most optimal solution as it minimises the distance to the ideal point (0, 0) for both objectives. The corresponding parameters values and their Sobol' indices are displayed on table II.

TABLE II  
OPTIMIZED PARAMETERS FOR MAXIMIZING THE COUPLING FACTOR  $k$  AND MINIMIZING THE FERRITE VOLUME  $V$  WITH THEIR SOBOLO' INDICES ( $LOO \simeq 3.698 \cdot 10^{-5}$ ,  $n_{samples} = 35$ )

variable	value	S <sup>T</sup>	description
$w_f$	0.246 m	0.876	ferrite width
$h_f$	0.0102 m	$8.855 \cdot 10^{-3}$	ferrite height
$l_f$	0.234 m	0.126	ferrite length

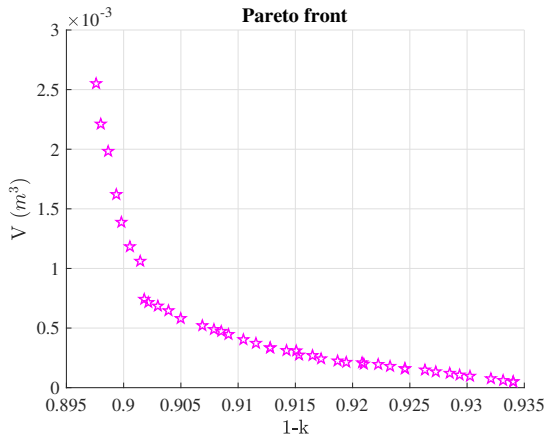


Fig. 2. Pareto front for the multi-objective optimization to minimize the ferrite volume  $V$  and maximize the coupling factor  $k$

### B. Validation

Using the optimized ferrite geometry, for each possible misalignment ( $\Delta x, \Delta y$ ), the resulting coupling factor  $k(\Delta x, \Delta y)$  has been predicted along with its nominal value  $k_0(\Delta x, \Delta y)$ , using the active learning algorithm with  $(\Delta x, \Delta y) \in [-0.25, 0.25] \text{m} \otimes [-0.5, 0.5] \text{m}$ . The gain in

percentage  $\left(\frac{k - k_0}{k_0}\right)$  from the nominal coupling factor is displayed on figure 3. Over the wide domains of variations of  $\Delta x$  and  $\Delta y$  the percentage gain is ranging from 2% to 8% with an average value of 6.1%. Thanks to the optimization, the cost of 3F3 ferrites can be divided by 2 on a practical system using the optimal set of parameters, while not diminishing, but slightly increasing the WPT coupling factor.

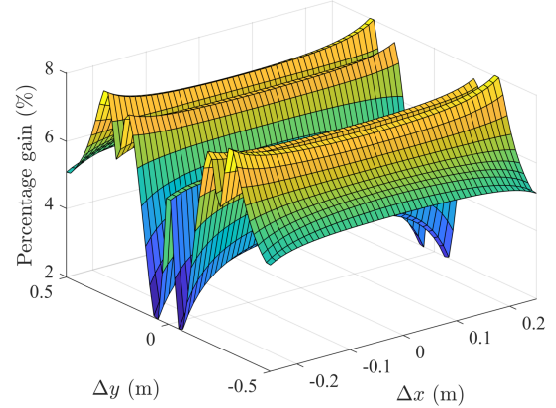


Fig. 3. Percentage gain for the coupling factor  $k$  ( $LOO \simeq 2.237 \cdot 10^{-4}$ ,  $n_{samples} = 13$ ) with the optimized geometry from the coupling factor with the nominal geometry  $k_0$  ( $LOO \simeq 1.588 \cdot 10^{-4}$ ,  $n_{samples} = 13$ ) against the misalignments  $\Delta x$  and  $\Delta y$

### REFERENCES

- [1] ES Siah et al. "Fast parameter optimization using Kriging metamodeling". In: *IEEE Antennas and Propagation Society International Symposium*. Vol. 2. IEEE. 2003, pp. 76–79.
- [2] Yao Pei et al. "Fast Shielding Optimization of an Inductive Power Transfer System for Electric Vehicles". In: *IEEE Access* 10 (2022), pp. 91227–91234.
- [3] Vincenzo Cirimele. "Design and Integration of a Dynamic IPT System for Automotive Applications". Thèse de doctorat Génie électrique Politecnico di Torino 2017. PhD thesis. Université Paris-Saclay, Politecnico di Torino, 2017.
- [4] Paul Lagouanelle et al. "Sensitivity analysis in dynamic WPT systems based on non-intrusive stochastic methods". In: *SMACD/PRIME 2021; International Conference on SMACD and 16th Conference on PRIME*. VDE. 2021, pp. 1–4.
- [5] Charles Boulitrop, Marc Lambert, and Sándor Bilicz. "A gradient-improved particle swarm optimizer using surrogate modeling". In: *25th International Workshop on Electromagnetic Non-Destructive Evaluation (ENDE 2022)*. Budapest, Hongrie, June 13–15, 2022, 2 pages.
- [6] B. Sudret and C.V. Mai. "Computing derivative-based global sensitivity measures using polynomial chaos expansions". In: *Reliability Engineering & System Safety* 134 (2015), pp. 241–250. ISSN: 0951-8320.