



HAL
open science

Relationships between risk perception and self-reported risk-taking behaviours among French sport climbers

Lou Charlot, Xavier Sanchez, Cécile Martha

► **To cite this version:**

Lou Charlot, Xavier Sanchez, Cécile Martha. Relationships between risk perception and self-reported risk-taking behaviours among French sport climbers. 16th European Congress of Sport & Exercise Psychology, Jul 2022, Padova, Italy. hal-04147417

HAL Id: hal-04147417

<https://hal.science/hal-04147417v1>

Submitted on 30 Jun 2023

HAL is a multi-disciplinary open access archive for the deposit and dissemination of scientific research documents, whether they are published or not. The documents may come from teaching and research institutions in France or abroad, or from public or private research centers.

L'archive ouverte pluridisciplinaire **HAL**, est destinée au dépôt et à la diffusion de documents scientifiques de niveau recherche, publiés ou non, émanant des établissements d'enseignement et de recherche français ou étrangers, des laboratoires publics ou privés.

Relationships between risk perception and self-reported risk-taking behaviours among French sport climbers

Lou, Romy Charlot^{1(*)}, Xavier Sanchez^{2,3,4}, Cécile Martha¹

¹Aix-Marseille Université, CNRS, ISM UMR 7287, France ; ²Université d'Orléans, France ; ³Université Paris Saclay, France ; ⁴Halmstad University, Sweden



Introduction

Sport climbing : a high-risk sport

Mistakes and risk-taking behaviours can lead to injuries of different degrees, even death (Brymer et al., 2020; Schöffl et al., 2010)

Risk factors

Numerous but separate studies with different factors

- (age) McIntosh et al., 2017
- (level) Neuhof et al., 2011

Risk perception

Risk perception (RP) – defined as the riskiness assessment of specific situations (Weber et al., 2002)

No studies have investigated RP as an explanatory factor for risk-taking behaviour in climbing

Objective

To examine the role of risk perception on sport climbing specific risk-taking behaviours, considering age, gender and climbing experience.

Method

n = 3912

Members of the FFME (french federation of mountaineering and climbing) answered the questionnaire

36.6

Mean age (± 12.6)

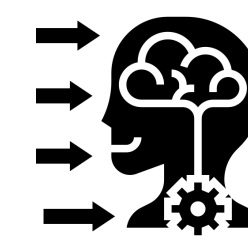
35.2%

Percentage of women

The questionnaires



Climbing Risk-Taking Behaviour Questionnaire (adapted from Martha et al., 2022) Participants indicated, on a scale of 1 (never) to 7 (always), how often they engaged in each of listed behaviours

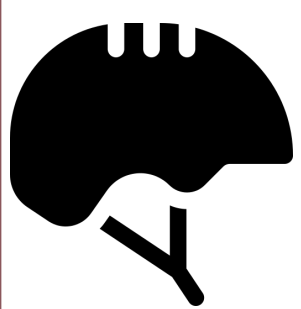


Risk Perception Questionnaire Participants indicated, on a scale of 1 (not at all dangerous) to 7 (extremely dangerous), how dangerous they evaluated each of listed behaviours

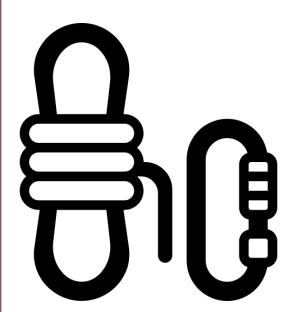


Personal Data (age, gender) and Climbing Experience Questionnaire (climbing level, experience of fall-induced acute injuries)

Dependant variables : climbing risk-taking behaviours



Not wearing a helmet when climbing a single pitch cliff*



Voluntary jumping 1 or more quickdraws at the beginning of the route *



Soloing (climbs without any safety gear)*



Climbing after drinking *

*A binary recoding was performed (0 = cautious / 1 = risky)



Independent variables

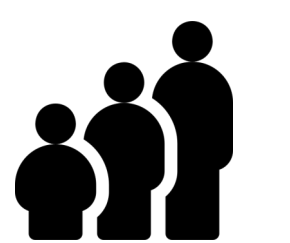
Gender

35.2%
♂ 64.8%

The climbing level of the participant

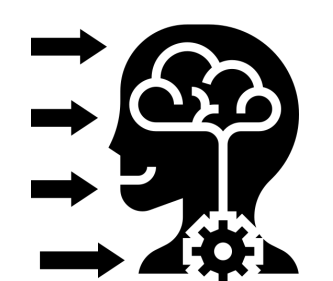
4+, 5a, 5a+, 5b,... à 9c

Age

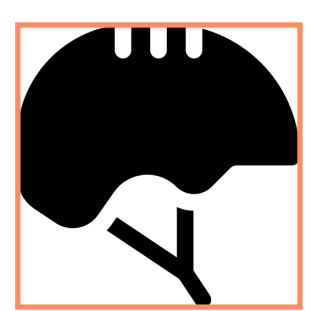


Risk perception*

*A binary recoding was performed (0 = low perception / 1 = high perception)



Results of logistic regression

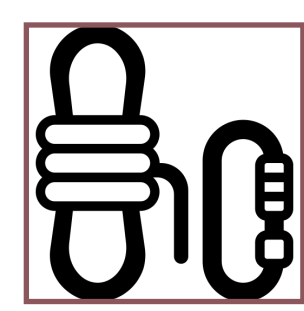


Not wearing a helmet when climbing a single pitch cliff

Risk perception: OR = 0.07 ***

Level :

- [4+; 5c] ref
- [5c+ ; 6b] OR = 1.58 **
- [6b+ ; 7a] OR = 2.98 ***
- [7a+ ; 7c] OR = 10.15 ***
- [7c+ ; ...] OR = 19.19 ***



Voluntary jumping 1 or more quickdraws at the beginning of the route

Age: OR = 1.03 ***

Gender : OR = 1,66 ***

Perception : OR = 0,16 ***

Level :

- [4+; 5c] ref
- [5c+ ; 6b] OR = 1.61 **
- [6b+ ; 7a] OR = 2.74 ***
- [7a+ ; 7c] OR = 3.50 ***
- [7c+ ; ...] OR = 3.17 **



Soloing (climbs without any safety gear)

Gender: OR = 2.24 ***

Perception: OR = 0.77 *

Level :

- [4+; 5c] ref
- [5c+ ; 6b] /
- [6b+ ; 7a] OR = 2.15 ***
- [7a+ ; 7c] OR = 2.81 ***
- [7c+ ; ...] OR = 3.67 **



Climbing after drinking

Gender: OR = 1.80 **

Perception: OR = 0.19 ***

OR = Odds Ratio

Only the explanatory factors are exposed

Conclusion

Age, gender, climbing level and especially risk perception are explanatory factors of climbing risk taking behaviours.

From a prevention perspective, safety training should target risk perception.

Future research:

- Considering the following factors : presence of the entourage, personality...
- Focusing on another form of climbing: bouldering