



**HAL**  
open science

## Variability and evolution of the optical polarization of a sample of gamma-ray blazars

J Otero-Santos, J.A Acosta-Pulido, J. Becerra González, C.M Raiteri, M.I Carnerero, N. Castro Segura, O González-Martín, A Luashvili

► **To cite this version:**

J Otero-Santos, J.A Acosta-Pulido, J. Becerra González, C.M Raiteri, M.I Carnerero, et al.. Variability and evolution of the optical polarization of a sample of gamma-ray blazars. *Monthly Notices of the Royal Astronomical Society*, 2023, 523 (3), pp.4504-4519. 10.1093/mnras/stad1722 . hal-04143249

**HAL Id: hal-04143249**

**<https://hal.science/hal-04143249>**

Submitted on 21 Apr 2024

**HAL** is a multi-disciplinary open access archive for the deposit and dissemination of scientific research documents, whether they are published or not. The documents may come from teaching and research institutions in France or abroad, or from public or private research centers.

L'archive ouverte pluridisciplinaire **HAL**, est destinée au dépôt et à la diffusion de documents scientifiques de niveau recherche, publiés ou non, émanant des établissements d'enseignement et de recherche français ou étrangers, des laboratoires publics ou privés.

# Variability and evolution of the optical polarization of a sample of gamma-ray blazars

J. Otero-Santos<sup>1</sup>,<sup>1,2</sup>★† J. A. Acosta-Pulido<sup>1,2</sup>, J. Becerra González<sup>1,2</sup>, C. M. Raiteri<sup>1,3</sup>,  
M. I. Carnerero<sup>3</sup>, N. Castro Segura<sup>2,4</sup>, O. González-Martín<sup>1,5</sup> and A. Luashvili<sup>1,6</sup>

<sup>1</sup>*Instituto de Astrofísica de Canarias (IAC), E-38200 La Laguna, Tenerife, Spain*

<sup>2</sup>*Departamento de Astrofísica, Universidad de La Laguna (ULL), E-38206 La Laguna, Tenerife, Spain*

<sup>3</sup>*INAF-Osservatorio Astrofisico di Torino, via Osservatorio 20, 10025 Pino Torinese, Italy*

<sup>4</sup>*School of Physics & Astronomy, University of Southampton, Highfield, Southampton SO17 1BJ, UK*

<sup>5</sup>*Instituto de Radioastronomía y Astrofísica (IRyA-UNAM), 3-72 (Xangari), 8701, Morelia, Mexico*

<sup>6</sup>*Laboratoire Univers et Théories, Observatoire de Paris, Université PSL, CNRS, Université de Paris, 92190 Meudon, France*

Accepted 2023 June 6. Received 2023 May 16; in original form 2023 January 16

## ABSTRACT

We present a polarization variability analysis of a sample of 26  $\gamma$ -ray blazars monitored by the Steward Observatory between 2008 and 2018 in the optical band. We investigate the properties and long-term variability of their optical polarization, searching for differences between blazar types. We observe that BL Lac objects are typically less polarized and less variable than flat spectrum radio quasars (FSRQs). Moreover, BL Lacs display a distribution of their polarization angle typically oriented in a preferential direction, contrary to the rather random distribution of FSRQs. For the latter blazar type, as well as those sources showing a bright stellar emission, we take into account the depolarizing effect introduced by the broad line region and the host galaxy on the measured polarization degree. In this sample, we also observe that BL Lacs present an uncorrelated evolution of the flux and the polarization. Contrary, FSRQs show a correlation before the depolarization correction, that is lost however after considering this effect. In addition, we study the behaviour of the polarization angle, searching for angle rotations in its long-term evolution. We derive that the FSRQs studied here show rotations more frequently than BL Lac objects by a factor  $\sim 1.5$ . During these periods, we also observe a systematic decrease of the polarization fraction, as well as a marginal flux increase, not significant however to connect rotations with optical flares. We interpret these results within the extended shock-in-jet scenario, able to explain the overall features observed here for the polarization of the blazar sample.

**Key words:** polarization – galaxies: active – BL Lacertae objects: general – galaxies: jets – galaxies: nuclei.

## 1 INTRODUCTION

Active galactic nuclei (AGN) are one of the most powerful sources in the entire Universe, sometimes with the ability of developing powerful relativistic jets acting as natural particle accelerators. Among the different types, blazars are extremely boosted due to relativistic effects, owing to their orientation being closely aligned with the line of sight of the Earth. They can emit from radio to very-high-energy  $\gamma$ -rays, displaying a characteristic double-bump shape in their spectral energy distribution (SED; see e.g. Abdo et al. 2010). The low energy bump, with its peak typically found at infrared (IR) to X-ray frequencies, is explained with non-thermal synchrotron emission of relativistic electrons from the jet (Ghisellini et al. 2010). The high energy bump found at  $\gamma$ -ray energies on the other hand is often interpreted as an inverse Compton (IC) scattering of low energy photons with the same population of relativistic electrons

responsible for the synchrotron emission (Maraschi, Ghisellini & Celotti 1992). Blazars are often subdivided in two classes, depending on their optical spectrum (Urry & Padovani 1995): BL Lacertae (BL Lac) objects and flat spectrum radio quasars (FSRQs). The former present an optical spectrum with no features or weak features with an equivalent width  $|EW| < 5 \text{ \AA}$  in the rest frame, while in the optical spectrum of the latter type, narrow and broad lines with  $|EW| > 5 \text{ \AA}$  are visible.

The low energy emission of AGN, from radio to optical wavelengths, is characterized by a high polarization degree. This polarized emission is related to the non-thermal synchrotron emission and the magnetic field of the relativistically boosted jet. Among the large variety of AGN types, blazars show an extraordinarily high optical polarization w.r.t. other classes, as reported by Angelakis et al. (2016), with values that can reach a fraction of  $\sim 50$  per cent (Smith 2017). This polarization is affected by the characteristic intense variability displayed by blazars, exhibiting for instance large changes of the polarization fraction or the orientation of the polarization angle. Owing to the origin of this polarized emission, this variability is linked to the magnetic field of the jet and its variations. As a consequence, variability studies of the polarization of blazars are one

\* E-mail: [jorge.otero.santos@gmail.com](mailto:jorge.otero.santos@gmail.com)

† Recently moved to Instituto de Astrofísica de Andalucía, CSIC, E-18080, Granada, Spain

of the most accessible ways of obtaining information of the magnetic field in these objects and in the extreme Universe, the role it plays in the particle acceleration, the interaction with its environment, and its relation with the overall emission detected from blazars. The polarized emission has been observed in the past with many different behaviours w.r.t. the total optical emission. For instance, Raiteri et al. (2012) reported a correlated evolution of the optical total and polarized flux for the FSRQ B2 1633+38. On the other hand, anticorrelations between the total and polarized emission of blazars have also been reported (e.g. Fraija et al. 2017 for Mkn 421). In addition, the lack of relation between these two quantities has also been observed in some cases (e.g. for PKS 1424+240 as reported by Covino et al. 2015).

In this regard, the RoboPol programme has been leading the effort on studying the polarized emission of astrophysical objects and in particular of AGN and blazars. These studies have evaluated different characteristics of the polarized emission of these objects and their variability in a systematic way. For instance, Angelakis et al. (2016) have studied the relation between the frequency of the synchrotron peak and the radio loudness of several AGN. Properties such as variability and distribution of the polarization in AGN and blazars have also been characterized by e.g. Pavlidou et al. (2014); Hovatta et al. (2016). Numerous efforts have also been dedicated to understand the development of rotations of the polarization angle (see Blinov et al. 2015, 2016a, b, 2018), as well as their connection with the  $\gamma$ -ray activity of blazars and/or whether they have a stochastic origin (Blinov et al. 2015, 2018).

Studying the polarized emission and variability of  $\gamma$ -ray blazars is also key to understand the connection of the magnetic field with the mechanisms responsible for the broad-band emission and the particle acceleration in the jet. However, the fact that each blazar seems to behave in its own unique way makes the interpretation within a general framework rather difficult, leading to a large variety of models developed for understanding their behaviour. For example, models based on chaotic magnetic fields have been proposed by Laing (1980). Moreover, helical jets with helical magnetic fields like the model developed by Raiteri et al. (2013) have been commonly used to explain the evolution of the polarization of blazars (see e.g. Gupta et al. 2017). Marscher et al. (2010) suggest a model based on knots moving under the influence of a toroidal magnetic field following a spiral path. Another possibility involves magnetic reconnection of oppositely directed field lines, releasing magnetic energy and accelerating particles (Zhang et al. 2018). Alternatively, models based on turbulent emitting cells in the jet have also been widely used scenario for interpreting the polarization variability (see Marscher 2014).

Here, we study the behaviour, variability and evolution of the polarization and its characteristics for a sample of  $\gamma$ -ray bright blazars. These blazars have been regularly monitored by the Steward Observatory for approximately 10 yr, providing an excellent spectropolarimetric data base for a long-term analysis of the properties and variability of their polarization. This data base has been explored in the past for individual sources. However, a systematic study of a large sample of sources observed by this monitoring programme is still lacking. Here, we perform an extensive evaluation of the polarized emission of our blazar sample owing to the remarkable time coverage and sampling, only comparable to the RoboPol programme, that has observed a larger number of sources with, however, a shorter coverage of  $\sim 3$  yr (see e.g. Blinov et al. 2016a, b, 2018). This allows a thorough comparison with the results derived by RoboPol. In addition, taking advantage of the spectropolarimetry performed by the Steward Observatory, a comparison of the behaviour of the whole

**Table 1.** Sample of blazars from the Steward Observatory monitoring programme included in this work.

Source	Sp. Type	$z$	SED Type <sup>a</sup>	$v_{\text{sync}}^a$
H 1426+428	Galaxy dominated	0.129	HSP	$1.0 \cdot 10^{18}$
Mkn 501	Galaxy dominated	0.033	HSP	$2.8 \cdot 10^{15}$
1ES 2344+514	Galaxy dominated	0.044	HSP	$1.6 \cdot 10^{16}$
3C 66A	BL Lac	0.444 <sup>b</sup>	ISP	$7.1 \cdot 10^{14}$
AO 0235+164	BL Lac	0.940	LSP	$2.5 \cdot 10^{14}$
S5 0716+714	BL Lac	0.30 <sup>c</sup>	ISP	$1.5 \cdot 10^{14}$
PKS 0735+178	BL Lac	0.424	LSP	$2.7 \cdot 10^{13}$
OJ 287	BL Lac	0.306	LSP	$1.8 \cdot 10^{13}$
Mkn 421	BL Lac	0.031	HSP	$1.7 \cdot 10^{16}$
W Comae	BL Lac	0.103	ISP	$4.5 \cdot 10^{14}$
H 1219+305	BL Lac	0.184	HSP	$1.9 \cdot 10^{16}$
1ES 1959+650	BL Lac	0.047	HSP	$9.0 \cdot 10^{15}$
PKS 2155–304 <sup>†</sup>	BL Lac	0.116	HSP	$5.7 \cdot 10^{15}$
BL Lacertae	BL Lac	0.069	LSP	$3.9 \cdot 10^{13}$
PKS 0420–014	FSRQ	0.916	LSP	$5.9 \cdot 10^{12}$
PKS 0736+017 <sup>†</sup>	FSRQ	0.189	LSP	$1.5 \cdot 10^{13}$
OJ 248	FSRQ	0.941	LSP	$3.4 \cdot 10^{12}$
Ton 599	FSRQ	0.725	LSP	$1.2 \cdot 10^{13}$
PKS 1222+216	FSRQ	0.434	LSP	$2.9 \cdot 10^{13}$
3C 273	FSRQ	0.158	LSP	$7.0 \cdot 10^{13}$
3C 279	FSRQ	0.536	LSP	$5.2 \cdot 10^{12}$
PKS 1510–089	FSRQ	0.360	LSP	$1.1 \cdot 10^{13}$
B2 1633+38	FSRQ	1.814	LSP	$3.0 \cdot 10^{12}$
3C 345	FSRQ	0.593	LSP	$1.0 \cdot 10^{13}$
CTA 102	FSRQ	1.032	LSP	$3.0 \cdot 10^{12}$
3C 454.3	FSRQ	0.859	LSP	$1.3 \cdot 10^{13}$

<sup>a</sup>Extracted from the 4LAC-DR2 catalogue of the *Fermi*-LAT satellite (Ajello et al. 2020).

<sup>b</sup>Redshift value still under debate. Lower limit of  $z \geq 0.33$  determined by Torres-Zafra et al. (2018).

<sup>c</sup>Redshift still uncertain. Upper limit of  $z < 0.322$  estimated by Danforth et al. (2013).

<sup>†</sup>Sources that have not been observed by the RoboPol programme between 2013 and 2017.

spectral data set studied in Otero-Santos et al. (2022) (hereafter, OS22) and the polarized spectra is also conducted. The paper is structured as follows: in Section 2, we detail the observations and data reduction used in this analysis; the methodology followed for the data analysis is explained in Section 3; and the main results and discussion are detailed in Sections 4 and 5, respectively. Finally, a brief summary of the main conclusions is also included in Section 6.

## 2 OBSERVATIONS AND DATA REDUCTION

In this work, we have included the polarimetric data of 26  $\gamma$ -ray bright blazars monitored by the Steward Observatory and previously analysed in OS22. These sources were observed for roughly 10 yr, between 2008 and 2018, with spectropolarimetric observations in support of the *Fermi*-LAT telescope. The Steward Observatory provides the optical total and polarized spectra between 4000 and 7550 Å, with resolutions ranging from 16 to 24 Å and a dispersion of approximately 4 Å pixel<sup>-1</sup>, depending on the slit width. In addition, the average polarization values, including the Stokes parameters, the polarization degree and the orientation of the electric vector position angle (EVPA) in the range of 5000–7000 Å are also provided. The blazar sample analysed here is presented in Table 1, separated by

their blazar type as BL Lacs, FSRQs, and BL Lacs dominated by the emission of the stellar population according to OS22. We have also included their classification according to the position of the synchrotron peak of the SED as low- (LSPs,  $\nu_{\text{sync}} < 10^{14}$  Hz), intermediate- (ISPs,  $10^{14}$  Hz  $< \nu_{\text{sync}} < 10^{15}$  Hz) or high-synchrotron peaked (HSPs,  $\nu_{\text{sync}} > 10^{15}$  Hz) blazars, as defined in Ajello et al. (2020). Following the procedure from OS22, we have eliminated the telluric absorption features, performed the rest-frame conversion, corrected small shifts in  $\lambda$  and accounted for the Galactic extinction using the model from Fitzpatrick (1999). More details are given in Section 2 of OS22.

In addition to the Galactic extinction, the interstellar medium can also have a small contribution to the observed polarization degree. We have evaluated this contribution for the sources with the highest expected interstellar polarization, that depends on the extinction value  $A_\lambda$ , i.e. IES 1959+650 ( $A_\lambda = 0.474$ ), BL Lacertae ( $A_\lambda = 0.901$ ), and IES 2344+514 ( $A_\lambda = 0.580$ ). We have used the approximation from Serkowski, Mathewson & Ford (1975), where the interstellar contribution can be expressed as  $P_V \sim 4.5E_{B-V}$ . In this expression,  $E_{B-V}$  represents the reddening of the sources,  $E_{B-V} = A_\lambda/R_V$ . We adopted a value of  $R_V = 3.1$  and retrieved the values of  $A_\lambda$  for these sources from Schlafly & Finkbeiner (2011). With these considerations, the expected interstellar medium polarization is 0.67, 1.3, and 0.84 percent, respectively. To crosscheck this result, we have made use of the catalogue from Heiles (2000) to estimate the contribution of the interstellar medium from the reddening of a known star located close to the position of the source. This alternative approach leads to contributions of  $\sim 0.78$ ,  $\sim 0.65$ , and  $\sim 0.19$  percent, respectively. Therefore, we assume that the interstellar polarization contribution is negligible for this work.

The ambiguity on the EVPA value was taken into account with the approach used in other studies (e.g. Kiehlmann et al. 2016). We consider that consecutive measurements of the polarization angle correspond to those that minimize the difference between them by considering the criterion

$$\Delta\theta_i = |\theta_{i+1} - \theta_i| < 90^\circ. \quad (1)$$

Following this equation,  $\pm n \cdot 180^\circ$  is added to  $\theta_{i+1}$  if  $\Delta\theta_i > 90^\circ$ . We note that other authors (for instance, Carnerero et al. 2017) include the uncertainties in the determination of the EVPA when performing this correction,

$$\Delta\theta_i = |\theta_{i+1} - \theta_i| - \sqrt{\sigma(\theta_{i+1})^2 + \sigma(\theta_i)^2} < 90^\circ. \quad (2)$$

This can lead to a correction between two measurements that would not be performed with the criterion of equation (1). For the present work, we have adopted the first criterion presented here. Nevertheless, we have checked both criteria, with no different results in this case. Moreover, this correction is also dependant on the initial choice of EVPA interval, i.e.  $[-90^\circ, 90^\circ]$  or  $[0^\circ, 180^\circ]$ . Here, we use the latter, that corresponds to the interval used by the Steward Observatory data. We stress that our data are affected by seasonal observational gaps. Since blazars are characterized by a strong variability on many different time-scales (see e.g. Kiehlmann et al. 2021), we only apply this condition to measurements taken with a temporal separation  $< 200$  d.

The blazars monitored by the Steward Observatory have been selected based on their interest as emitting *Fermi*-LAT  $\gamma$ -ray sources with extreme variability. This could lead to the introduction of a bias towards  $\gamma$ -ray bright sources in this case. This contrasts with the criterion used by, for instance, the RoboPol programme, that consists on an unbiased sample of  $\gamma$ -ray loud blazars (see Pavlidou et al. 2014; Blinov et al. 2015). Nevertheless, we also note that all sources included here except PKS 2155–304 and PKS 0736+017

(as shown in Table 1), are coincident with sources observed by RoboPol.

### 3 METHODOLOGY

The aim of this work is to study the properties, behaviour and evolution of the polarization for the blazar sample considered here. For this, we have evaluated the variability and the overall behaviour of the polarization degree and angle (Section 3.1). Moreover, as the host galaxy and broad line region (BLR) from sources with a bright stellar emission and from FSRQs, respectively, are not expected to be polarized, we have studied the depolarizing effect that these two contributions can have on the polarization degree of the non-thermal synchrotron emission of the relativistic jet (Section 3.2). We have also studied the variability of the polarization degree and searched for rotations in the evolution of the polarization angle (Section 3.3).

#### 3.1 Variability of the polarization

With the aim of studying and quantifying the variability of the polarization, we have tested the statistical distribution that provides a best fit for the polarization degree. Following the approach from Blinov et al. (2016a), we have evaluated the probability density function (PDF) with a Beta distribution defined as

$$\text{PDF}_{\text{Beta}}(x, \alpha, \beta) = \frac{x^{\alpha-1}(1-x)^{\beta-1}}{B(\alpha, \beta)}, \quad (3)$$

where  $x$  represents the polarization degree,  $\alpha$  and  $\beta$  (with  $\alpha, \beta > 0$ ) are the parameters that define the distribution and  $B(\alpha, \beta)$  is the Beta function. This consideration has been used by other authors in the past (for instance, Hovatta et al. 2016), with a good agreement between the data and the Beta distribution. In order to assess the reliability and success of this function when describing our data, we have applied a  $\chi^2$  test (Pearson 1900) to account for the goodness of the fit, considering values of  $\chi^2/\text{d.o.f.} \lesssim 1$  as good fits. As a comparison, we have also tested the performance of the commonly used Gaussian distribution, typically assumed for the estimation of several parameters in blazar studies, e.g. the fractional variability,  $F_{\text{var}}$ .

Assuming that the Beta distribution is able to reproduce the measured polarization degree, the mean value can be expressed as a function of  $\alpha$  and  $\beta$ ,

$$P_{\text{mean}} = \frac{\alpha}{\alpha + \beta}. \quad (4)$$

In addition, the parameters of the distribution can also be used for quantifying the variability displayed by the polarization degree, providing an estimation of the so-called modulation index

$$m_{\text{int}} = \frac{\sqrt{\sigma^2}}{P_{\text{mean}}}, \quad (5)$$

where  $\sigma^2$  is the variance of the Beta distribution (Hovatta et al. 2016). This quantity can be obtained from  $\alpha$  and  $\beta$  as

$$\sigma^2 = \frac{\alpha\beta}{(\alpha + \beta)^2(\alpha + \beta + 1)}. \quad (6)$$

The modulation index  $m_{\text{int}}$  is analogous to the fractional variability,  $F_{\text{var}}$ , commonly used in blazar studies, that quantifies the intensity of the variability. As a crosscheck, we have also estimated the  $F_{\text{var}}$  following the prescription from Vaughan et al. (2003), as

$$F_{\text{var}} = \sqrt{\frac{S^2 - \langle \sigma_{\text{err}}^2 \rangle}{\langle x \rangle^2}}. \quad (7)$$

$S^2$  represents the variance of the data sample,  $\langle \sigma_{\text{err}}^2 \rangle$  is the mean square error and  $\langle x \rangle$  corresponds to the mean value of the sample. The uncertainty of this quantity can be estimated following equation (B2) from Vaughan et al. (2003). Notice that, the  $F_{\text{var}}$  is associated with a Gaussian distribution. Therefore, it is used only for comparative purposes. The results of the behaviour of the polarized emission using the tools presented here will be discussed in Section 4.

### 3.2 Depolarizing effect of non-polarized components

Studies such as Sosa et al. (2017) or Blinov et al. (2021) have claimed in the past that the host galaxy can have a depolarizing effect in the measured polarization degree of the synchrotron emission. This effect can be especially important in those sources with a bright host galaxy (e.g. those presented as galaxy-dominated blazars in OS22), with an optical emission comparable to that from the relativistic jet. To account for this effect in the three galaxy-dominated sources in our sample (H 1426+428, Mkn 501 and 1ES 2344+514), we have made use of the estimation of the host galaxy performed in OS22. This estimation is based on the decomposition of all the spectral data set of the blazar using the minimum number of meaningful components, associated with the different contributions to the emission, that are able to successfully reproduce and model the variability displayed by the source by using the non-negative matrix factorization (NMF; Paatero & Tapper 1994). With this approach, we have been able to estimate the overall contributions of both the jet and the host galaxy and separate their emission. With this estimate of the host galaxy, we can subtract it in order to correct the measured polarization degree from the stellar contribution as

$$P_{\text{intr}}(t) [\%] = \frac{P_{\text{obs}}(t) [\%]}{1 - \frac{I_{\text{host galaxy}}}{I_{\text{total}}(t)}}. \quad (8)$$

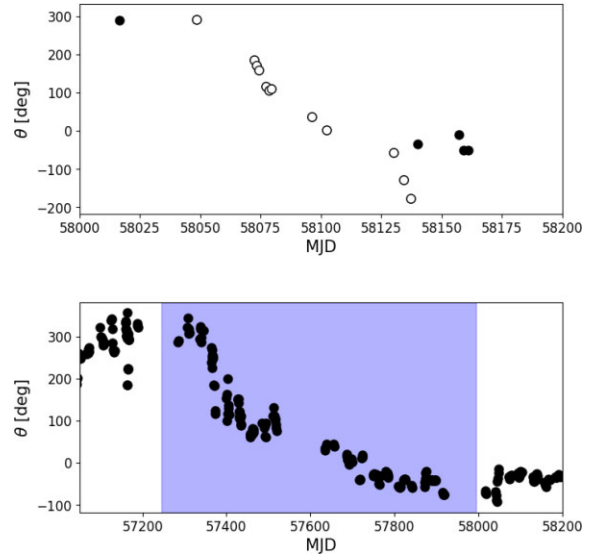
This correction can also be applied to FSRQs, where the BLR is also expected to be unpolarized. Making use of the BLR component extracted from the NMF reconstruction from OS22, and again following equation (8), we can obtain an estimation of the intrinsic polarization degree of the synchrotron emission, higher than the observed polarization fraction. Notice that, by BLR contribution, we mean not only the broad emission line component but also the thermal continuum likely coming from the accretion disc as observed in radio-quiet QSOs (Vanden Berk et al. 2001). Hereafter, we will refer to this contribution as the BLR + AD component.

### 3.3 EVPA rotations

The variability of the polarization is not only restricted to changes in the polarization degree. Changes of the polarization angle orientation are also observed in the temporal evolution of blazars. These changes are often seen with an erratic behaviour. However, in some occasions, smooth and continuous swings in the variability of the EVPA are detected (see for instance Blinov et al. 2015, 2016a, b; Kiehlmann et al. 2017). These events, typically identified as EVPA rotations or swings, have been one of the ways to study the behaviour of the polarization and magnetic field of the relativistic jets in these objects.

#### 3.3.1 Smooth rotations

There is no standard definition of an EVPA rotation in the framework of blazars. Therefore, we have followed a similar definition to that used by the RoboPol programme, detailed in Blinov et al. (2015).



**Figure 1.** Examples of the two types of rotations considered here. *Top:* Smooth rotation detected for AO 0235+164. Empty markers represent the observations during the rotation. *Bottom:* Slow non-smooth rotation observed for OJ 287. The EVPA swing occurs during the period contained in the blue contour.

The main characteristics that an EVPA variation must fulfill to be considered a rotation are the following

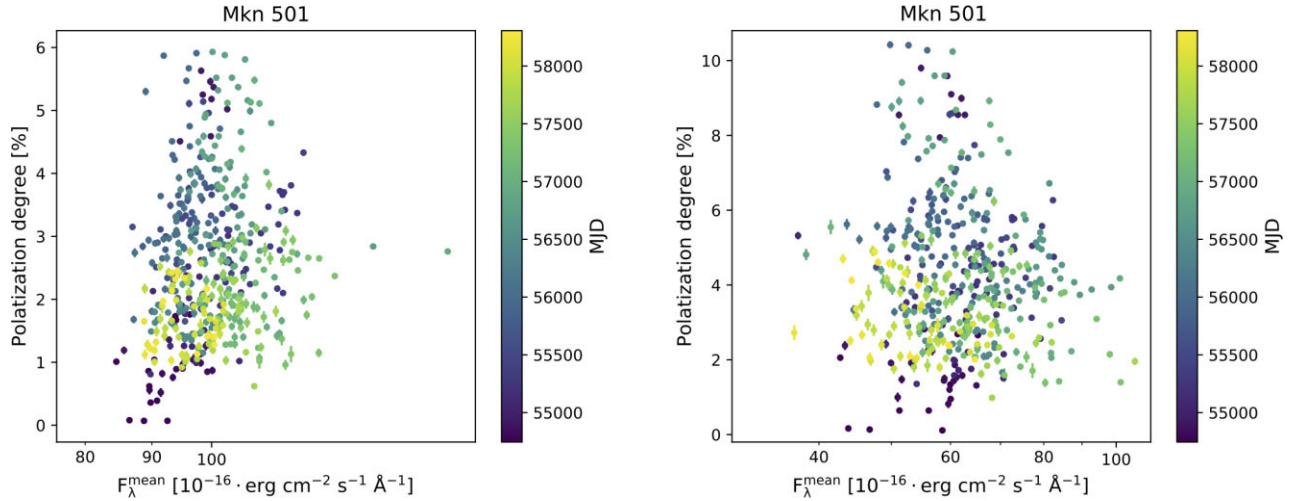
- (i) A minimum variation of the polarization angle  $\Delta\theta \geq 90^\circ$ .
- (ii) In order to exclude possible false identifications, the EVPA swing must contain at least 4 observations.
- (iii) Owing to the fast variability displayed by blazars, consecutive points of a rotation must be separated in time by  $\Delta t \leq 30$  d.
- (iv) The start and end of the rotation must be accompanied by a change of slope  $\Delta\theta_i/\Delta t_i$  w.r.t. previous observations. Following the prescription from Blinov et al. (2015), we used a factor 5 change, or a change of sign, to define the start and end of the rotation.

Furthermore, due to the fast variability and fluctuations observed in the emission of blazars, we do not reject rotations in which a point slightly fluctuates from the general trend of the EVPA swing, allowing one measurement to deviate  $<5^\circ$  if the following measurement continues the general trend of the rotation. An example of these rotations is represented in the top panel of Fig. 1.

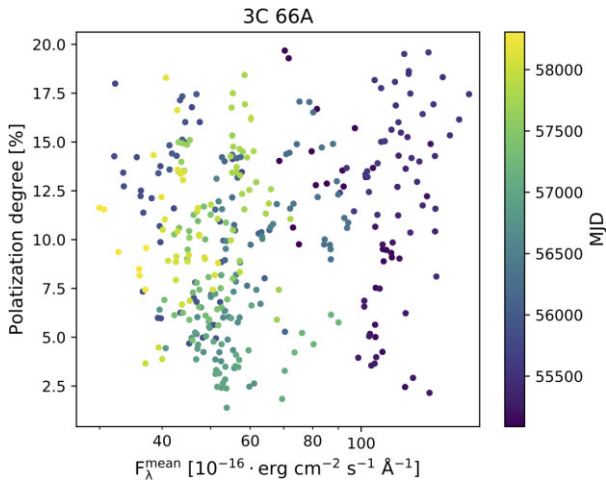
#### 3.3.2 Slow and non-smooth rotations

In addition to the aforementioned smooth rotations, here we have also considered those rotations showing a non-smooth, and typically much slower change of the EVPA. A visual inspection of these non-smooth swings reveals that they tend to have a higher angle variation and duration than the smooth swings, leading to the appearance of several fluctuations and fast variability in shorter time-scales during the development of the angle rotation.

In order to identify these non-smooth swings, we use the same definition introduced above, without the condition demanding a continuous change of the polarization angle during the rotation (see bottom panel of Fig. 1). Prior to the identification, we also apply a cubic spline interpolation on the binned EVPA light curve, with bins of 60–100 d depending on the source, to remove the variability in short time-scales of the polarization angle. This smoothing leads to an easier identification of these non-smooth EVPA rotations.



**Figure 2.** Polarization–flux diagrams for the galaxy-dominated blazar Mkn 501. The flux value is estimated from the mean flux of each total optical spectrum. *Left:* before correcting by the host galaxy. *Right:* after correcting by the host galaxy.



**Figure 3.** Polarization–flux diagram for the BL Lac object 3C 66A. The flux value is estimated from the mean flux of each total optical spectrum.

## 4 RESULTS

### 4.1 General behaviour of the polarization

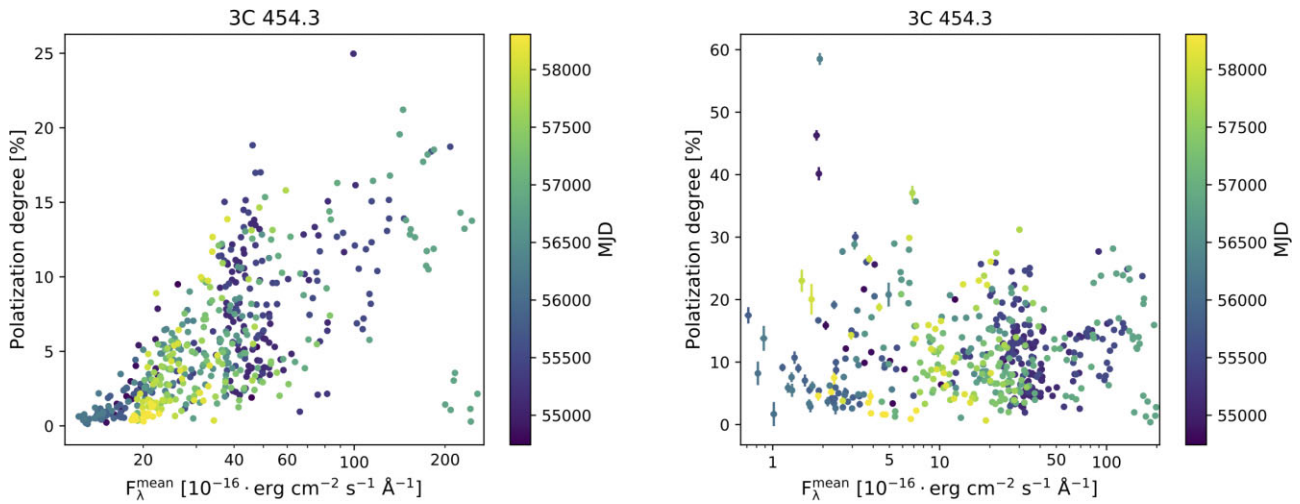
The long-term evolution of the polarization and its relation with the total optical flux was studied from the polarization–flux diagrams. As an illustration, we represent an example for each class: the galaxy-dominated blazar Mkn 501, the BL Lac object 3C 66A and the FSRQ 3C 454.3, in Figs 2, 3, and 4, respectively. The figures corresponding to the rest of the sources are included as online material (Figs S1 to S3). The polarization–flux diagrams prior to the depolarizing correction for galaxy-dominated blazars and FSRQs are also displayed in the left-hand panels of Figs 2 and 4, as well as the corresponding online figures for each blazar. The galaxy-dominated blazars show a very low polarization in comparison to BL Lacs and FSRQs, with values of the polarization degree before host galaxy correction  $<6$  per cent, and average values of  $\sim 3$  per cent. A linear correlation coefficient of  $r \sim 0.55$ , indicates a mild correlation between the polarization degree and the total optical emission.

Concerning the BL Lac objects, we do not observe any relation between their polarization and their total optical emission. This

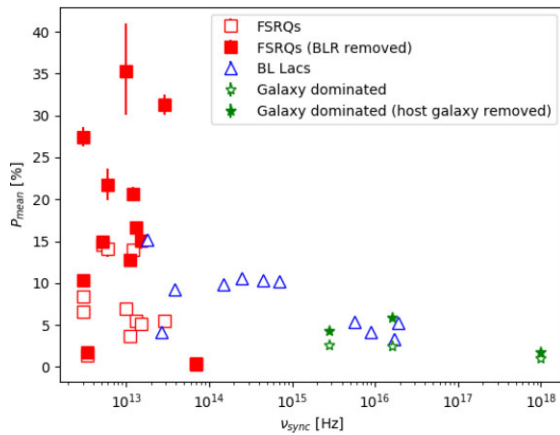
can be seen for example in Fig. 3. They tend to have a higher polarization fraction than those BL Lacs dominated by the emission of the stellar population, with typical mean percentages of 5–10 per cent. Additionally, through a visual inspection of Fig. 5 where the mean polarization degree is represented w.r.t. the frequency of the synchrotron peak of the SED, we observe that for BL Lacs with a lower peaking frequency, a higher polarization degree is measured, in comparison to those with a high  $\nu_{\text{sync}}$ , with very low values of the polarization fraction. This is also reflected in the correlation coefficient between these two quantities estimated for the BL Lac population, with a value of  $r = -0.65$ ,  $p\text{-value} = 0.03$ .

On the contrary, FSRQs show different types of behaviour before the BLR + AD correction, as it can be observed for example in the left-hand panel of Fig. 4 for 3C 454.3 before correcting the effect of the BLR + AD. Five of the sources of this type show hints or evidence of a correlated evolution of the polarized and total emission, with correlation coefficients  $r \geq 0.50$ : PKS 0420–014, OJ 248, B2 1633+38, 3C 454.3, and CTA 102. This behaviour was reported already in the past for B2 1633+38 by Raiteri et al. (2012). Remarkably, for one of the FSRQs of the sample, 3C 345, the polarization degree displays an anticorrelation with the total optical flux. The correlation coefficient for this blazar is  $r = -0.49$ ,  $p\text{-value} = 10^{-3}$ . The remaining six FSRQs do not show any significant correlation or behaviour in their long-term polarization variability. Regarding the relation between the mean polarization and the location of the synchrotron peak of the SED, FSRQs cover a higher range of mean polarization fractions than BL Lac objects with a high  $\nu_{\text{sync}}$  and galaxy-dominated blazars ( $\nu_{\text{sync}} > 10^{15}$  Hz), as shown in Fig. 5.

In addition to the long-term variability of the polarization degree, we have evaluated the characteristics of the polarized emission of this blazar sample. We have tested the distribution that describes best the measured polarization degree through a  $\chi^2$  test. This test was used to compare the goodness of the fit of the Beta distribution introduced in Section 3 and a Gaussian distribution, using the best fit to the data of each of them as the null hypothesis. We obtain typical values of  $\chi^2/\text{d.o.f.} \lesssim 1$  and  $p\text{-values} < 0.05$  for 21 of the 26 blazars studied here. Therefore, the Beta distribution leads to a good agreement with the data for most of the sources of the sample. An example of a Beta PDF fit for BL Lacertae is presented in Fig. 6. For the remaining five sources, the Beta distribution is not able to accurately describe the



**Figure 4.** Polarization-flux diagrams for the FSRQ blazar 3C 454.3. The flux value is estimated from the mean flux of each total optical spectrum. *Left:* before correcting by the BLR + AD. *Right:* after correcting by the BLR + AD.

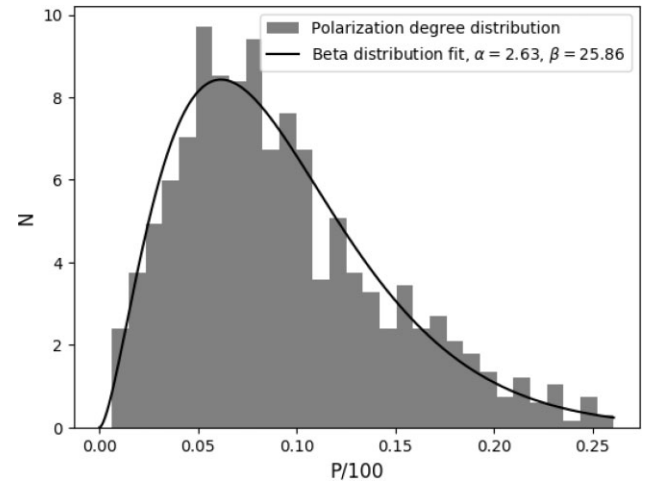


**Figure 5.** Mean polarization degree versus the frequency of the synchrotron peak  $\nu_{\text{sync}}$ . Open and filled green stars represent the galaxy-dominated sources with and without the contribution of the host galaxy, respectively. Blue triangles correspond to the BL Lac objects. Open and filled red squares correspond to the FSRQs, with and without the BLR + AD contribution, respectively (see Section 4.2).

distribution of their polarization degree. It is important to highlight that for three of these five blazars, the low number of observations ( $N_{\text{obs}} \leq 47$ ) is most likely affecting the result of the test. The last two targets for which the Beta distribution results in a poor fit to the data are 3C 273 and OJ 248. These two blazars are characterized by an almost unpolarized emission, with the exception of a bright flare followed by an increase of the polarization degree for the latter. The fact that the majority of the population is well represented by a Beta distribution is in line with the results presented by Blinov et al. (2016a). On the other hand, the Gaussian distribution fits lead to values of  $\chi^2/\text{d.o.f.} > 1$ , proving that it is not suitable for describing the distribution of the polarization degree of blazars.

#### 4.2 Depolarizing effect of the host galaxy and the BLR + AD

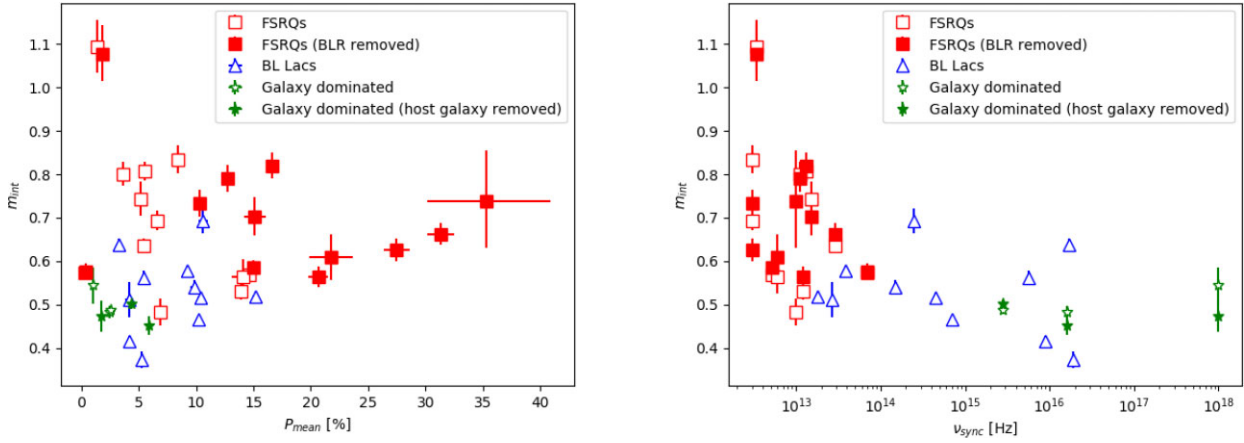
We have considered the effect of the host galaxy in the measured polarization degree for those blazars showing a bright stellar emission, namely H 1426+428, Mkn 501, and 1ES 2344 + 514.



**Figure 6.** Beta distribution of BL Lacertae for its normalized polarization degree. The grey shaded area represents the distribution of the polarization degree measurements and the black line corresponds to the best fit of the Beta distribution. The fitted values of  $\alpha$  and  $\beta$  are also shown in the legend of the figure.

Following equation (8) and considering the estimation of the host galaxy performed in OS22, we are able to calculate the intrinsic polarization degree of the emission of the jet. We observe that after subtracting the contribution of the host galaxy, the polarization degree of these sources shows an increase of approximately a factor 2 w.r.t. the observed measurements. Moreover, the corrected polarization degree does not show the mildly correlated behaviour with the total flux commented in Section 4.1. On the other hand, it now presents the same behaviour as the rest of the BL Lac sample, with no apparent trend between the total optical flux and the polarization. This behaviour can be observed in the right-hand panel of Fig. 2 for the case of Mkn 501, and in Fig. S1 for H 1426+428 and 1ES 2344+514.

This correction has also been applied to FSRQs, where the contribution of the BLR + AD can also have a depolarizing effect. Depending on the different relative contribution of the BLR + AD for each FSRQ, the correction ranges from almost an unchanged



**Figure 7.** Intrinsic modulation index of the polarization degree. *Left:*  $m_{\text{int}}$  versus the mean polarization degree. *Right:*  $m_{\text{int}}$  versus  $\nu_{\text{sync}}$ . Open and filled green stars represent the galaxy-dominated sources with and without the contribution of the host galaxy, respectively. Blue triangles correspond to the BL Lac objects. Open and filled red squares correspond to the FSRQs, with and without the BLR + AD contribution, respectively.

polarization degree for those sources with a faint BLR + AD, up to a factor  $\gtrsim 3$  for the brightest BLR + AD (e.g. PKS 1510–089). The corrected polarization degree for these sources w.r.t. the flux is presented in the right-hand panel of Fig. 4 for the case of 3C 454.3, and in Fig. S3 for the rest of the FSRQs. It is also remarkable that after this correction, we observe polarization degrees as high as 50–70 percent for example for Ton 599, PKS 1222+216 or 3C 454.3.

Regarding the behaviour of the polarization degree with the total flux, as for the galaxy-dominated blazars, the trends observed between these two quantities are no longer observable after the correction, with the exception of OJ 248 and 3C 345. The former presents a positive correlation with a linear correlation coefficient  $r = 0.76$  (p-value =  $5.4 \times 10^{-44}$ ). Carnerero et al. (2015) and Raiteri & Villata (2021) also reported the observed correlation for this source, attributing the variability to a turbulent magnetic field component. The latter displays an anticorrelated behaviour, with a coefficient  $r = -0.80$  (p-value =  $1.4 \times 10^{-6}$ ).

### 4.3 Polarization variability

We have evaluated the variability of the polarization. As a first step, we have compared the intensity of the variability derived from the modulation index  $m_{\text{int}}$  and the fractional variability  $F_{\text{var}}$  defined by equations (5) and (7), respectively. We find that both measurements are compatible within errors. Therefore, owing to the good agreement of the Beta distribution with the data, and previous works using  $m_{\text{int}}$  to define the variability of the polarization (e.g. Hovatta et al. 2016), hereafter, we will refer to the results of the intrinsic modulation index. The modulation index for each source is represented in the left-hand panel of Fig. 7 w.r.t.  $P_{\text{mean}}$ . In the right-hand panel, we also present  $m_{\text{int}}$  with the frequency of the synchrotron peak of the SED.

This analysis clearly shows a higher variability coming from FSRQs in comparison to BL Lac and galaxy-dominated sources. The mean modulation index for BL Lacs and galaxy-dominated sources was estimated to be  $m_{\text{int}} = 0.53 \pm 0.08$  and  $m_{\text{int}} = 0.50 \pm 0.03$ , respectively. On the other hand, FSRQs yield a higher value  $m_{\text{int}} = 0.70 \pm 0.13$ . This separation is also visible in the right-hand panel of Fig. 7, where sources with a lower synchrotron peak display a higher  $m_{\text{int}}$  value. This trend leads to a correlation coefficient  $r = -0.52$  (p-value = 0.007). The left-hand panel of Fig. 7 does not reveal any evident difference in the mean polarization degree prior to the host

galaxy and BLR + AD correction between BL Lacs and FSRQs with  $P_{\text{mean}} = (7.97 \pm 0.04)\%$  and  $P_{\text{mean}} = (7.16 \pm 0.05)\%$ , respectively, with only the galaxy-dominated blazars presenting a significantly lower mean polarization degree  $P_{\text{mean}} = (2.02 \pm 0.01)\%$ . However, after accounting for the depolarization produced by the BLR + AD, FSRQs appear to be more polarized than BL Lac objects, with a mean intrinsic polarization degree of  $P_{\text{mean}} = (17.37 \pm 0.10)\%$ . In addition, the sources presenting a bright host galaxy show an increase of their mean polarization degree of a factor  $\sim 2$  after correcting by the contribution of the host galaxy,  $P_{\text{mean}} = (3.95 \pm 0.02)\%$ . In fact, after accounting for the depolarizing effect, we observe an anticorrelation between the mean polarization and the value of  $\nu_{\text{sync}}$ , with  $r = -0.57$  (p-value = 0.002), as shown in Fig. 5. Despite this increase of the mean polarization for these blazar types, no significant change in the intrinsic modulation index is observed after the correction. Compatible results in this regard have also been reported by Angelakis et al. (2016). A similar synchrotron peak frequency dependence of the polarization degree and its variability has been reported by Smith (1996). We note that for some sources, the frequency of the synchrotron peak was observed to change depending on the emission state (e.g. Mkn 501; see MAGIC Collaboration et al. 2020). However, as observed from Fig. 5, this trend is clearly visible despite small shifts of  $\nu_{\text{sync}}$ .

In addition to this, we have also evaluated the relation between the intrinsic modulation index of the polarization degree and the fractional variability of the total optical flux, extracted from Table 2 of OS22, and represented in Fig. 8. This figure clearly shows that sources with a higher variability in the optical band also present a higher variability and  $m_{\text{int}}$  for the polarization degree, as expected.

### 4.4 Orientation of the EVPA

We have also studied the distribution of the EVPA. We have evaluated whether the sources analysed here show a preferred or a random and stochastic orientation of the EVPA. First, we note that the orientation of the polarization angle suffers from a  $\pm 180^\circ$  ambiguity introduced by the alignment degeneracy, causing that, for instance,  $90^\circ = 270^\circ$ . We have taken into account this degeneracy by evaluating the distribution of the polarization angle in the range  $[-90^\circ, 90^\circ)$ . The evaluation of these distributions is included in Table 2. We compare a Von Mises distribution with a preferential orientation in the considered angle interval and a uniform distribution with no value



**Table 2.** Sample of blazars from the Steward Observatory monitoring programme included in the polarization analysis. Columns: (1) Target name. (2) Source type. (3) Number of polarization measurements. (4) Mean observing cadence. (5) Mean observed polarization degree. (6) Intrinsic modulation index of the polarization. (7) Preferential EVPA direction. (8) Linear correlation coefficient between the total flux and the polarization degree. (9) Number of displayed smooth and fast rotations. (10) Total spectral index range. (11) Polarized spectral index range.

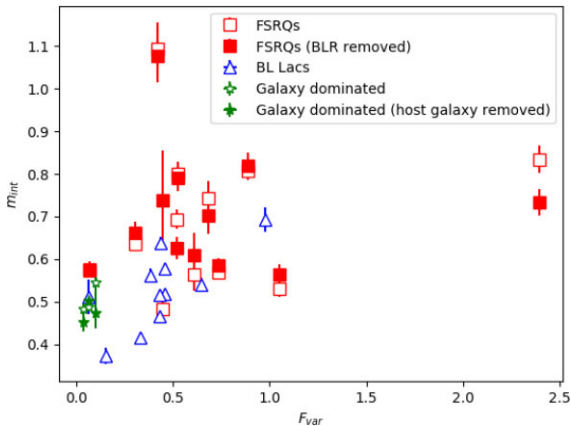
(1) Source	(2) Type	(3) $N_{\text{obs}}$	(4) $\Delta t_{\text{mean}}$ [days]	(5) $P_{\text{mean}}$ [%]	(6) $m_{\text{int}}$	(7) $\theta_{\text{pref}}$ [ $^{\circ}$ ] <sup>a</sup>	(8) $r^b$	(9) $N_{\text{rot}}$	(10) $\alpha_{\text{tot}}$	(11) $\alpha_{\text{pol}}$
H 1426+428	Galaxy dominated	47	12.8	$1.03 \pm 0.08$	$0.54 \pm 0.04$	– <sup>c</sup>	0.55	0	1.3–1.4	–0.3–2.5
Mkn 501	Galaxy dominated	624	5.0	$2.56 \pm 0.05$	$0.49 \pm 0.01$	$-56.3 \pm 6.3$	0.14	0	1.3–1.5	0.5–2.5
1ES 2344+514	Galaxy dominated	246	14.5	$2.46 \pm 0.07$	$0.48 \pm 0.02$	$-46.9 \pm 6.1$	0.54	0	0.8–1.0	0.0–2.5
3C 66A	BL Lac	477	6.1	$10.20 \pm 0.22$	$0.70 \pm 0.01$	$25 \pm 13, -20 \pm 12^d$	0.23	0	0.7–1.7	0.5–2.0
AO 0235+164	BL Lac	277	13.2	$10.58 \pm 0.43$	$0.69 \pm 0.03$	Uniform	0.31	9	–1.1–1.5	–1.3–2.2
S5 0716+714	BL Lac	325	7.1	$9.80 \pm 0.29$	$0.54 \pm 0.02$	Uniform	–0.01	8	0.4–1.3	0.5–1.9
PKS 0735+178	BL Lac	39	4.6	$4.17 \pm 0.33$	$0.51 \pm 0.04$	– <sup>c</sup>	–0.12	0	0.6–0.9	0.5–1.8
OJ 287	BL Lac	708	3.7	$15.18 \pm 0.30$	$0.52 \pm 0.01$	$-41.0 \pm 7.2$	0.19	1	0.2–1.7	0.2–1.9
Mkn 421	BL Lac	859	3.7	$3.26 \pm 0.07$	$0.64 \pm 0.01$	$-15.4 \pm 6.9$	0.30	12	0.7–2.2	0.7–2.8
W Comae	BL Lac	454	6.0	$10.39 \pm 0.25$	$0.52 \pm 0.01$	$71.2 \pm 6.6$	–0.10	5	0.1–1.3	0.0–1.6
H 1219+305	BL Lac	47	6.6	$5.22 \pm 0.28$	$0.37 \pm 0.02$	– <sup>c</sup>	–0.20	0	0.6–1.4	0.5–2.5
1ES 1959+650	BL Lac	202	17.0	$4.17 \pm 0.12$	$0.42 \pm 0.02$	$-35.9 \pm 5.9$	–0.06	0	0.4–1.6	0.6–2.1
PKS 2155–304	BL Lac	425	7.1	$5.42 \pm 0.14$	$0.56 \pm 0.01$	$52.4 \pm 6.8$	0.22	3	1.0–2.1	1.0–2.5
BL Lacertae	BL Lac	788	4.1	$9.23 \pm 0.19$	$0.58 \pm 0.01$	$17.4 \pm 6.1$	–0.23	14	–0.3–1.3	–0.3–2.0
PKS 0420–014	FSRQ	64	13.2	$14.10 \pm 1.00$	$0.56 \pm 0.04$	Uniform	0.56	1	0.5–1.7	0.2–1.5
PKS 0736+017	FSRQ	172	5.0	$5.16 \pm 0.28$	$0.74 \pm 0.04$	Uniform	0.34	9	0.5–2.3	0.0–2.5
OJ 248	FSRQ	266	10.9	$1.40 \pm 0.08$	$1.09 \pm 0.06$	Uniform	0.76	3	1.3–2.3	1.0–2.5
Ton 599	FSRQ	260	5.7	$13.94 \pm 0.46$	$0.53 \pm 0.02$	Uniform	–0.05	7	0.9–2.2	0.8–2.5
PKS 1222+216	FSRQ	558	4.1	$5.46 \pm 0.14$	$0.64 \pm 0.02$	$1.6 \pm 6.1$	0.37	4	2.2–3.3	0.3–2.1
3C 273	FSRQ	396	6.7	$0.24 \pm 0.01$	$0.57 \pm 0.02$	$63.0 \pm 6.3$	0.03	0	2.4–3.5	1.5–4.0
3C 279	FSRQ	660	3.9	$14.59 \pm 0.32$	$0.57 \pm 0.01$	$46.7 \pm 6.7$	0.16	12	0.5–1.9	0.2–2.0
PKS 1510–089	FSRQ	471	6.4	$3.63 \pm 0.12$	$0.80 \pm 0.03$	Uniform	0.35	9	1.1–3.0	0.3–3.1
B2 1633+38	FSRQ	441	7.6	$6.64 \pm 0.21$	$0.69 \pm 0.02$	Uniform	0.70	5	1.3–3.0	0.1–2.2
3C 345	FSRQ	52	28.1	$6.90 \pm 0.46$	$0.48 \pm 0.03$	$64.3 \pm 6.6$	–0.49	1	1.5–2.7	0.5–2.7
CTA 102	FSRQ	410	12.4	$8.39 \pm 0.33$	$0.83 \pm 0.03$	Uniform	0.28	11	0.8–3.0	0.4–3.0
3C 454.3	FSRQ	767	4.5	$5.47 \pm 0.15$	$0.81 \pm 0.02$	Uniform	0.51	14	0.6–2.3	–0.2–3.0

<sup>a</sup>Estimated in the polarization angle range  $[-90^{\circ}, 90^{\circ}]$  to avoid the alignment degeneracy.

<sup>b</sup>Calculated before host galaxy or BLR + AD correction for host-galaxy dominated blazars and FSRQs, respectively.

<sup>c</sup>Not enough number of measurements to reliably test the Von Mises distribution.

<sup>d</sup>This source shows a double peak in the orientation in the EVPA. Due to its position, far from the edges of the distribution, the orientation of this source was evaluated with a double Gaussian function instead of a Von Mises distribution.



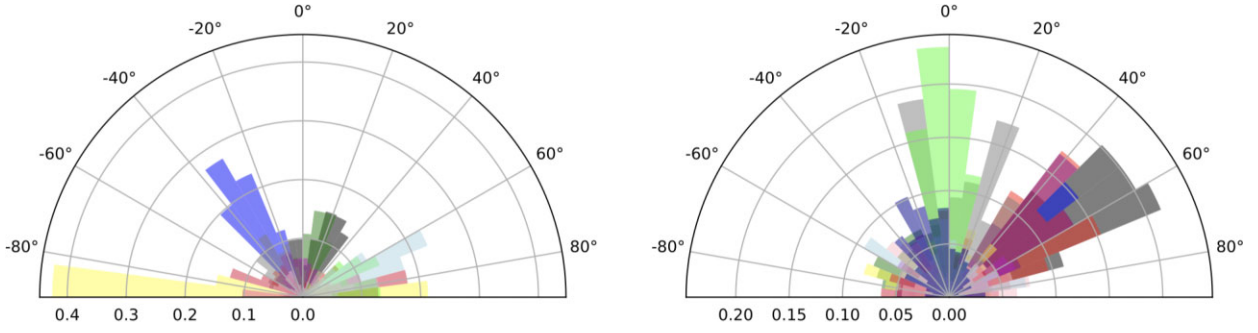
**Figure 8.** Intrinsic modulation of the polarization versus the optical fractional variability. Open and filled green stars represent the galaxy-dominated sources with and without the contribution of the host galaxy, respectively. Blue triangles correspond to the BL Lac objects. Open and filled red squares correspond to the FSRQs, with and without the BLR + AD contribution, respectively.

of the polarization angle favoured. For the BL Lac subsample, 9 of the 11 sources present a dominant or preferred orientation of the polarization angle (see the left-hand panel of Fig. 9). Contrary to this general behaviour we find AO 0235+164 and S5 0716+714.

The former is known for showing mixed properties between the BL Lac and FSRQ classes (Raiteri et al. 2006, 2014; Otero-Santos et al. 2022). The latter on the other hand presents a low synchrotron peak in comparison with the bulk of the BL Lac population, as reported in Table 1. FSRQs mostly present a random distribution of the polarization angle, as shown in the right-hand panel of Fig. 9. This is in line with the results presented by Angelakis et al. (2016), where a dependence between the frequency of the synchrotron peak and a preferential direction in the distribution of the EVPA is claimed. Therefore, FSRQs and BL Lacs with a low value of  $v_{\text{sync}}$  tend to show a uniformly distributed polarization angle, whereas BL Lacs with a high  $v_{\text{sync}}$  have a favoured orientation of the polarization angle. Nevertheless, four FSRQs of our sample still show a preferential orientation, i.e. PKS 1222+216, 3C 273, 3C 279, and 3C 345. We also note that, for three sources of our blazar sample, PKS 0735+178, H 1219+305, and H 1426+428, we have not tested their distribution due to the low number of observations.

#### 4.5 EVPA rotations

The smooth EVPA rotation search performed according to the criteria established in Section 3.3.1 resulted in a total of 128 angle swings detected in our blazar sample. The results of this analysis are gathered in Table 3. A total of 52 of the rotations were detected within the BL Lac subsample, while the 76 remaining swings correspond to the FSRQ population. We have not detected any rotation in the three



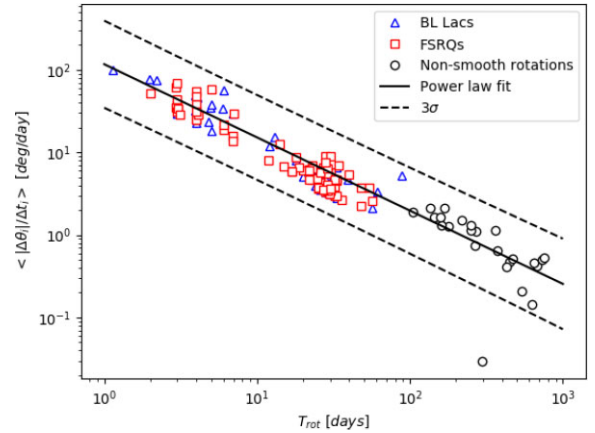
**Figure 9.** EVPA orientation histograms for the analysed blazar sample. Each colour represents the EVPA of one source. *Left:* BL Lac objects. The EVPA tends to show a preferential orientation for each source. *Right:* FSRQs. A more uniform or random distribution can be observed except for 3 objects at approximately 0° and 50°.

**Table 3.** Results of the EVPA rotation analysis on the different blazar types. (1) Source type. (2) Number of detected rotations. (3) Mean EVPA variation amplitude. (4) Mean rotation duration. (5) Mean EVPA variation rate. (6) Frequency of the rotations. The uncertainties are estimated as the standard deviation of the distributions.

(1) Type	(2) $N_{\text{rot}}$	(3) $\langle \Delta\theta \rangle$ [°]	(4) $\langle T_{\text{rot}} \rangle$ [d]	(5) $\langle  \Delta\theta /\Delta t_i \rangle$ [°/d]	(6) $f_{\text{rot}}$ [d <sup>-1</sup> ]
BL Lacs	52	144.7 ± 9.1	20.4 ± 2.4	19.5 ± 3.1	0.010
FSRQs	76	138.3 ± 5.4	21.1 ± 1.5	14.6 ± 1.9	0.017
All sample	128	140.9 ± 4.9	20.8 ± 1.3	16.6 ± 1.7	0.013

blazars dominated by the stellar emission. All the smooth rotations are represented in Figs S4 to S29 in the online version.

We have characterized each rotation by estimating their duration  $T_{\text{rot}}$ , amplitude of the EVPA change  $\Delta\theta$  and variation rate, estimated as the mean rate of consecutive measurements in the rotation,  $\langle |\Delta\theta|/\Delta t_i \rangle$ . No significant differences are observed in the angle change measured for BL Lac objects and FSRQs, with both values compatible within errors. However, a small difference in the duration was found, with BL Lacs displaying slightly faster rotations than FSRQs. This leads to a faster variation rate measured for the former,  $19.5 \pm 3.1 \text{ }^\circ \text{d}^{-1}$ , whereas the latter show a rate of  $14.6 \pm 1.9 \text{ }^\circ \text{day}^{-1}$ . These rotations present a rather fast development, with the shortest one showing a duration of 1.1 d, while the slowest spans for 194.7 d approximately. By definition, the shortest possible swing corresponds to 90°. Moreover, the largest EVPA change measured was 468.0°. The relation between the rotation rate and the duration of the angle rotation is also represented in Fig. 10, showing that rotations developing in shorter time-scales present higher rate values, with a similar angle variation range as those occurring in longer time-scales. This correlation between these quantities is also observed in fig. 7 from Blinov et al. (2016a) for the blazars monitored by the RoboPol programme. The relation between the rate and the duration of the rotations follows a power-law function  $\langle |\Delta\theta|/\Delta t_i \rangle = A \cdot T_{\text{rot}}^{-\alpha} \text{ }^\circ \text{d}^{-1}$ , with  $A = 117.3^\circ \pm 40.8^\circ$  and  $\alpha = 0.89 \pm 0.01$  estimated from all the smooth rotations detected here. For the results presented here, we observe that all the smooth rotations are within the  $3\sigma$  limit of this power-law fit. Visual inspection of this figure also reveals no significant differences between BL Lacs and FSRQs. Moreover, we have also evaluated a possible correlation of the rotation duration and variation amplitude, with no apparent relation between them. This was also reported by Blinov et al. (2016a). Thus, a lack of correlation between the variation amplitude of the angle and the duration of the rotation is translated into a relation between the rate and the duration



**Figure 10.** Rotation rate versus duration of the observed rotations. Blue triangles and red squares correspond to BL Lac objects and FSRQs, respectively. Black circles correspond to the non-smooth slow rotations measured for all the blazar population. The black solid line corresponds to a rotation of  $|\Delta\theta| = 117.3^\circ$ .

$\langle |\Delta\theta|/\Delta t_i \rangle \propto T_{\text{rot}}^{-1}$ . Therefore, the relation found between the rate and the duration with the power-law function reported above are consistent with the expected behaviour.

Given the total number of rotations detected, we can make an estimation for the frequency of the blazar sample of displaying an EVPA swing considering the procedure from Blinov et al. (2016b). These authors estimate the frequency as  $f_{\text{rot}} = N_{\text{rot}}/N_{\text{obs}}$ , where  $N_{\text{rot}}$  and  $N_{\text{obs}}$  are the number of rotations displayed and the number of days during which the sources were observed, respectively. This estimation was made for the full blazar sample, and for the BL Lac and FSRQ populations individually. The results are presented in Table 3. A frequency  $f_{\text{rot}} = 0.013 \text{ d}^{-1}$  was estimated for the complete blazar population studied here. In comparison to the frequency estimated by the RoboPol programme based on 24 sources showing EVPA rotations in the observations performed between 2013 and 2015 (Blinov et al. 2016b), the value estimated here is roughly an order of magnitude larger. We note that the monitoring programme carried out by the Steward Observatory has a faster mean observing cadence for several sources (shown in Table 2) w.r.t. that from RoboPol during the first three seasons ( $\sim 1$  week), which could be leading to this difference. In fact, as pointed out by Kiehlmann et al. (2021), the frequency of observations plays a crucial role in the observations of EVPA rotations. These authors measured a frequency of EVPA rotations a factor 3 higher from season 4 of RoboPol (1-d

**Table 4.** Characteristics of the rotator and non-rotator populations. (1) Source type. (2) Mean polarization degree. (3) Maximum EVPA change. (4) Mean EVPA variation rate. The uncertainties are estimated as the standard deviation of the distributions.

(1) Type	(2) $P_{\text{mean}}$ [%]	(3) $\Delta\theta_{\text{max}}$ [ $^{\circ}$ ]	(4) $\langle  \Delta\theta_i /\Delta t_i \rangle$ [ $^{\circ}/\text{days}$ ]
Rotators	$8.32 \pm 0.97$	$441.2 \pm 21.4$	$16.6 \pm 2.1$
Non-rotators	$4.70 \pm 0.37$	$67.0 \pm 4.2$	$3.6 \pm 0.9$

cadence) than that estimated from the first three seasons. Table 3 also presents the frequency estimated for BL Lacs and FSRQs, with the latter showing a higher frequency than the former by a factor  $\sim 1.5$ .

Table 2 shows that eight blazars of the sample do not present any rotation during the monitored period. We have compared the characteristics of these eight non-rotating sources with those from the ones displaying EVPA swings. This comparison is presented in Table 4. The rotating population presents a higher polarization degree than those sources with no rotations in the evolution of their polarization angle, with mean values  $P_{\text{mean}} = (8.32 \pm 0.97)\%$  and  $P_{\text{mean}} = (4.70 \pm 0.37)\%$ , respectively. Moreover, they also show a higher maximum change of the EVPA, as well as a higher mean variation rate than the non-rotators by a factor  $\sim 5$ .

In addition, we have also investigated the differences in the behaviour of rotating blazars between rotating and non-rotating periods. This comparison has been done for 103 rotations out of the 128 detected. We have discarded those cases in which the optical spectra from the Steward Observatory data base are not flux calibrated. We observe that for 12 of the 18 sources studied here presenting EVPA rotations, the mean polarization degree is lower during rotations than during their non-rotating periods. For two targets, this ratio has a value close to 1, while for the four sources remaining, we measure a higher polarization degree during their rotations. Considering all the blazar sample, the mean polarization degree during rotations was estimated to be  $P_{\text{mean}} = (6.50 \pm 0.68)\%$ , lower than that during non-rotating observations with  $P_{\text{mean}} = (8.44 \pm 1.02)\%$ . This is in line with the results reported by Blinov et al. (2016a) for 18 blazars studied in the RoboPol programme.

We have also evaluated the connections of smooth rotations with optical flares or enhanced flux states. We do not observe any systematic or general relation between flares and EVPA rotations for the bulk of the population, with several sources presenting polarization angle swings during both low- and high-emission states (for instance Ton 599). Therefore, no clear association can be made between these two types of events. However, we do observe that some sources show a clear increase of their mean optical flux during rotations. For instance, for 3C 345, we measured an average optical flux  $F_{\lambda}^{\text{mean}}(\text{no-rotation}) = (4.95 \pm 0.25) \times 10^{-16} \text{ erg cm}^{-2} \text{ s}^{-1}$  during non-rotating states, in comparison with  $F_{\lambda}^{\text{mean}}(\text{rotation}) = (1.11 \pm 0.10) \times 10^{-15} \text{ erg cm}^{-2} \text{ s}^{-1}$  during its rotation, roughly a factor 2 higher than the former. Other blazars showing this same behaviour are e.g. CTA 102 and OJ 248. In contrast to these sources, we also observe some of the targets of the sample with the opposite behaviour, i.e. a higher flux during non-rotations than during EVPA swings. Some examples of this are 3C 279 and AO 0235+164. For instance, the former has an optical flux  $F_{\lambda}^{\text{mean}}(\text{rotation}) = (1.80 \pm 0.18) \times 10^{-15} \text{ erg cm}^{-2} \text{ s}^{-1}$  and  $F_{\lambda}^{\text{mean}}(\text{no-rotation}) = (2.89 \pm 0.10) \times 10^{-15} \text{ erg cm}^{-2} \text{ s}^{-1}$  during rotations and non-rotations, respectively. We have also estimated the rate between the flux during rotating and non-rotating periods

for the bulk of the blazar population included in this work. This rate yields a value of  $F_{\lambda}^{\text{mean}}(\text{rotation})/F_{\lambda}^{\text{mean}}(\text{no-rotation}) = 1.24 \pm 0.12$ , slightly higher for the former state, despite this behaviour not being the general rule for all the sources. This rate was also compared with that estimated by Blinov et al. (2016a) for a different blazar population, with a value of 1.12, similar to the one estimated here.

Finally, as introduced in Section 3.3.2, we have also considered those rotations developed in longer time-scales than the aforementioned smooth EVPA swings, showing fluctuations and fast variability in the measured EVPA during the rotation. A total of 24 non-smooth rotations in the 9 of the 26 blazars included in this study. Following the approach used for the smooth angle swings, we have characterized each of these rotations. The average duration of these events,  $\langle T_{\text{rot}} \rangle = 361 \pm 41 \text{ d}$ , is significantly longer than that of smooth rotations as in Table 3. The fastest non-smooth rotations display a duration comparable with the slowest smooth EVPA swings, while the rest are clearly slower, as represented in Fig. 10. The mean polarization angle variation during these events is also higher than for the smooth rotations, with  $\langle \Delta\theta \rangle = 253.1^{\circ} \pm 19.1^{\circ}$ , in comparison with  $\langle \Delta\theta \rangle = 140.9^{\circ} \pm 4.9^{\circ}$  reported in Table 3. As a consequence of this difference, the measured rate is lower for the non-smooth rotations than for the smooth ones, with  $\langle |\Delta\theta|/\Delta t_i \rangle = 1.0 \pm 0.1^{\circ} \text{ d}^{-1}$ . It is also clear that these slow and non-smooth rotations follow the same relation between the rate and the duration of the rotation estimated for the smooth swings, as represented in Fig. 10. The values of power law fit after including also the non-smooth rotations were found to be  $A = 117.2^{\circ} \pm 33.4^{\circ}$  and  $\alpha = 0.89 \pm 0.01$ , consistent with those derived when considering only smooth rotations. As for the smooth rotations, we observe in Fig. 10 that all the non-smooth rotations are contained in the  $3\sigma$  confidence limit of the fit with the exception of a non-smooth rotation displayed by 3C 66A.

#### 4.6 Connection with the NMF analysis from OS22

Taking advantage of the spectral decomposition performed in OS22 using the NMF algorithm, we have investigated interesting behaviours and features displayed by the sources included here with the components derived from this analysis. The NMF study allowed us to decompose the total optical spectra in a small number of components that we could easily associate with the different parts of the blazar contributing to the optical emission. Galaxy-dominated blazars were reconstructed with a stellar template accounting for the emission of the host galaxy and a power law that modelled the synchrotron emission of the jet. For BL Lac objects, we used two to four power laws to account for the emission of the jet and its variability. Finally, FSRQs needed an extra component corresponding to a quasi-stellar template to model the emission of the BLR. For this latter blazar type, we sometimes identified a steep and almost constant power law associated with a bright accretion disc.

In this work, we have investigated the connection of these components with the features and characteristics of the polarization and its variability. Making use of the polarized optical spectra of each blazar provided by the Steward Observatory, we have calculated the polarized spectral index assuming a power-law shape as  $F_{\lambda}^{\text{pol}} \propto \lambda^{-\alpha}$ . Moreover, following the methodology from OS22, we have estimated the minimum number of components needed to model the variability of the polarized spectra using the residual sum of squares method. We have estimated a total of two components to account for the observed variability in all three blazar types. This result is expected as the jet is the only part that contributes significantly to the observed polarized emission. This can be compared with the same estimations from

OS22 for the total spectra, where BL Lacs also yielded a total of two components, as their total optical emission is coming mainly from the relativistic jet. Contrary, FSRQs needed three or four components according to this approach owing to their more complex morphology, with a bright BLR and accretion disc, contributing only to the total optical emission.

#### 4.6.1 Galaxy-dominated blazars

Galaxy-dominated blazars present a very bright unpolarized stellar emission, with a very low variability in the total flux OS22. The high dominance of this contribution masks the spectral variability of the total spectra, reflected in the short variability range of the total spectral index (for instance,  $\alpha_{\text{tot}} \sim 1.35\text{--}1.45$  for Mkn 501). On the other hand, the spectral variability of the polarized spectra is much higher, since the only contribution to this emission is the relativistic jet. The polarized spectral index presents a much higher variability range, with indices between  $\alpha_{\text{pol}} \sim 0.5\text{--}2.5$ . The difference between  $\alpha_{\text{tot}}$  and  $\alpha_{\text{pol}}$  for these sources confirms that the bright stellar emission is masking the real variability of the optical jet emission. Moreover, this stellar emission is also having a depolarizing effect in the measured polarization degree, as mentioned in Section 4.2.

#### 4.6.2 BL Lac objects

BL Lac objects display a similar variability range for the total and polarized spectral indices. The slopes derived from the polarized spectra are also comparable to those derived from the NMF analysis, and reported in Table 2 from OS22. However, no strong correlation is observed between the total and polarized spectral indices, with typical values of the linear correlation coefficient  $r \sim 0.3\text{--}0.4$ . Nevertheless, when the EVPA rotations are detected simultaneously with an optical flare ( $<10$  per cent of the rotations), we typically observe the same spectral behaviour of the total and polarized spectra. The spectral indices  $\alpha_{\text{tot}}$  and  $\alpha_{\text{pol}}$  during these events show rather similar values, meaning that the radiation producing these might have a common origin. In addition to this general behaviour, we also observe interesting features in some of the BL Lac objects studied here. Some comments on each BL Lac objects are included in Appendix A2.

#### 4.6.3 FSRQs

Following the behaviour of BL Lac objects, FSRQs also show a similar spectral variability in the total and polarized spectra. The correlation between both indices is absent. Moreover, roughly 30 per cent of the EVPA rotations identified in these objects were found to be connected with optical flares. During these events, similar total and polarized spectral indices are observed, often coincident with a dominant NMF component. Moreover, we do also observe peculiar behaviours for some FSRQs. In Appendix A3 we include some comments on the FSRQs of the sample.

## 5 DISCUSSION

Several models have been developed in recent years to explain the behaviour of the polarized emission observed from blazars. The results and differences between FSRQs/LSPs and ISPs/HSPs found here are consistent with those reported by Angelakis et al. (2016) and Hodge et al. (2018). This behaviour can be explained through the shock-in-jet scenario proposed by Angelakis et al. (2016). This framework is

based on a magnetic field with a helical structure plus a turbulent component. In such a scenario, a relativistic shock propagating in the jet accelerates particles through diffusive shock acceleration (see fig. 16 from Angelakis et al. 2016). The particles cool down as they are advected away from the shock due to the synchrotron and inverse Compton radiation. The high-energy particles that are responsible for the emission at frequencies around or above the synchrotron peak are located downstream in a small volume where the magnetic field has a highly ordered component plus a strong turbulent and variable contribution generated by the shock. On the other hand, the emission at frequencies below the synchrotron peak comes from particles contained in a much larger volume dominated by the ordered magnetic field. Therefore, a higher and more variable polarization is expected for the former region, while the second is expected to be less variable. This model has explained the behaviour observed for the blazar sample monitored by RoboPol. Due to the location of the optical emission w.r.t. the synchrotron peak for FSRQs/LSPs and ISPs/HSPs, this model explains the higher polarization and variability for the former in comparison to the latter. In addition, it can naturally explain the different EVPA distributions for each type. The optical emission from FSRQs is produced in the region with the strong turbulent component. Therefore, a random orientation is expected. Contrary to this, the optical emission of BL Lacs comes mostly from the region with a highly ordered stable magnetic field, leading to a more constant orientation of the EVPA. Therefore, this model is also able to explain the results observed here. This is in line with one of the possible explanations proposed by Smith (1996) for the wavelength dependence reported between different blazar types, with a more ordered and aligned magnetic field component radiating mostly in bluer wavelengths. In fact, Smith (1996) associates this dependence to reasons intrinsic to the emitting region and rules out that it is introduced by external causes (e.g. accretion disc).

Concerning the EVPA rotation study carried out here, the results are compatible with those reported by Blinov et al. (2016b), where a higher frequency of rotations is measured for FSRQs than for BL Lacs, as reported in Table 2. It is also important to note that among the BL Lacs displaying rotations, almost all correspond to the LSP and ISP subtypes. We also observe that the results found here are compatible with the distinction of rotations proposed by Blinov et al. (2015) and Kiehlmann et al. (2016), with deterministic smooth rotations occurring in the dominant large-scale magnetic field; and stochastic rotations taking place downstream in the turbulent region. While the former can take place in both blazar types (however are expected to be more important in HBLs), the latter would be observed more often for FSRQs and LSPs. Moreover, owing to the higher contribution of the turbulent component for FSRQs, non-smooth rotations can also be related to this region, where short time-scale fluctuations are more likely to appear in the measured EVPA during the rotation. This is compatible with the fact that most of the non-smooth rotations observed here correspond to FSRQs. The shock-in-jet model from Angelakis et al. (2016) can also explain the higher flux, variability, and polarization degree measured for blazars displaying EVPA rotations in comparison to those where no rotations were observed. Indeed, rotations are more frequently observed in FSRQs and LBLs, which tend to be more variable and luminous than HSPs (see Fig. 8). The higher variability of the polarization for these sources w.r.t. HSPs is also explained through the stronger contribution of the turbulent component under this model, also explaining why FSRQs reach higher values of the polarization degree. Moreover, Kiehlmann et al. (2017) finds random walk models

to be incompatible with the origin and development of EVPA swings, disfavouring turbulent models like the one proposed by Marscher (2014).

Focusing on those blazars displaying EVPA rotations, we also observe differences between the periods in which a rotation is observed from those with no EVPA swings. In agreement with the results reported by Blinov et al. (2016a) and Kiehlmann et al. (2017), the polarization degree was found to decrease during rotating periods. Zhang, Chen & Böttcher (2014) and Zhang et al. (2016) claim that this is an expected feature in a jet with a shock passing through the emitting region. However, random walk models are also able to reproduce such behaviour, as well as a flux increase during the rotations (see for instance Blinov et al. 2016a). Here, we observe a marginal flux increase during this periods by a factor 1.24. However, this behaviour is not systematically observed for our blazar sample. Moreover, both of these scenarios are able to explain the absence of correlation between the amplitude of the polarization angle variability and the duration of the rotations. Kiehlmann et al. (2017) also arise the possibility of the differences between rotating and non-rotating periods to be produced in random walk models.

Rotations have been associated in the past with the development of  $\gamma$ -ray flares, with significant evidence for this connection reported by Blinov et al. (2015, 2018). We have also evaluated the possible relation between optical flares and EVPA rotations for our sample. As reported in Section 4, we measure a hint of flux increase during rotating periods by a factor 1.24. Nevertheless, this brightening does not occur in all the blazars of our sample. In fact, a variety of different behaviours is observed, with some sources showing a clear flux increase (e.g. 3C 345), some with no significant change of their optical emission (BL Lacertae), and some showing a lower flux (for instance 3C 279). We do not find any significant correlation between optical flares and the EVPA rotations measured here, in agreement with the results reported by Blinov et al. (2016a) for the RoboPol blazar sample. The shock-in-jet model explains this as a random walk variability of the polarization if the rotations are being produced by the turbulent region (Blinov et al. 2016a). Alternatively, if the shocks propagating along the jet are mildly relativistic, this model also predicts large variability of the polarization and the EVPA, leading to the observed rotations, with small flux variations (Zhang et al. 2016). For those rotations that are observed correlated with an optical flare, as reported in Section 4, the variability of the total and polarized spectral indices is approximately the same, meaning that the mechanisms leading to the flux and polarization variability may be related. In addition, we can also relate these events to the different components derived from the NMF reconstruction presented in OS22. We observe that BL Lac objects tend to show a higher correlation between the total and the polarized spectral indices than FSRQs. This can also be related to the fact that FSRQs show a higher dominance of the turbulent component and therefore, as aforementioned, their polarization may present a random walk variability. Contrarily for BL Lacs, dominated by the large-scale, stable helical magnetic field component, the variability mechanisms are more likely to be the same for the total and polarized emission.

Under the characteristics and behaviours detailed above, we find that the shock-in-jet model from Angelakis et al. (2016) can provide a reasonable explanation for the reported results. However, it is important to note that this interpretation was made using the averaged properties extracted from all the blazar sample studied here. We also stress that more models have tried to reproduce the variability of the polarization and the EVPA. Some of them are models involving

changes in the jet orientation (for instance Marscher et al. 2008; Lyutikov & Kravchenko 2017) or kink instabilities leading to a restructuring of the magnetic field (e.g. Nalewajko 2017). However, each model presents certain limitations when reproducing some of the observed features. For instance, the former example is expected to produce a determined direction of the rotation, something not observed here. For the second type of model highlighted above, these rotations would be limited to a maximum change of the EVPA of  $180^\circ$ , always expected to happen in the same direction. Therefore, our observations disfavour these characteristics. Finally, models based on turbulent cells like the one proposed by Marscher (2014) have also been successful in the past for explaining the characteristics of the polarization variability. Nevertheless, large EVPA swings are rarely observed in such scenario, as well as not expected to appear correlated with MWL flares. We also note that models based on shocks propagating along helical jets similar to the one proposed by Angelakis et al. (2016) have also been proposed for other sources such as S5 0716+714 and CTA 102 by Larionov et al. (2013, 2016), interpreting successfully the long-term behaviour of the polarization of several blazars.

## 6 CONCLUSIONS

We have analysed 10 yr of spectropolarimetric data for 26  $\gamma$ -ray blazars monitored by the Steward Observatory, studying the properties of the polarization and its variability. Our results point towards a clear difference between FSRQs/LSPs and ISPs/HSPs. The former population presents a higher variability and reaches higher values of the polarization degree than the latter. Moreover, FSRQs tend to show a random distribution of the EVPA, in comparison to the preferential orientation displayed by BL Lacs. Concerning the relation between the flux and the polarization degree, BL Lacs do not show any correlated variability. On the other hand, FSRQs do appear to display a correlation between them. However, this correlation disappears after considering the depolarizing effect introduced by the BLR + AD.

We have also performed a systematic search for EVPA rotations in the evolution of the polarization angle. This study also led to the observation of differences between FSRQs and BL Lacs, with more frequent rotations for the former. These rotations have not been statistically connected to optical flares. We have compared the characteristics of the blazars showing EVPA rotations with those with no polarization angle swings, observing a higher variability, flux, and polarization for FSRQs. In addition, among the sources with EVPA rotations we have also detected differences between periods with ongoing rotations and periods where no rotations were taking place. The polarization degree measured during EVPA rotations was found to be lower than during non-rotating periods. Moreover, a marginal increase of the optical flux was also observed. However, this last effect does not appear systematically in all the blazars of the sample, as derived from the lack of correlations between rotations and flares.

Finally, we have evaluated the averaged characteristics of the polarization and its variability in the context of different models proposed in the literature. We conclude that the shock-in-jet model proposed by Angelakis et al. (2016) can provide a plausible explanation for the observed average behaviour. This model assumes a large-scale helically ordered magnetic field, plus a turbulent magnetic field component. The former dominates the emission at frequencies below the synchrotron peak frequency, becoming more important in the optical emission for ISPs and HSPs; while the latter becomes

stronger at frequencies around or above  $\nu_{\text{sync}}$ , dominating the optical emission in the case of FSRQs and LSPs.

## ACKNOWLEDGEMENTS

JOS thanks the support from grant FPI-SO from the Spanish Ministry of Economy and Competitiveness (MINECO) (research project SEV-2015-0548-17-3 and predoctoral contract BES-2017-082171). JOS, JAP, and JBG acknowledge financial support from the Spanish Ministry of Science and Innovation (MICINN) through the Spanish State Research Agency, under Severo Ochoa Programme 2020–2023 (CEX2019-000920-S) and the project PID2019-107988GB-C22. OGM acknowledges financial support from the project [IN105720] DGAPA PAPIIT from UNAM. Data from the Steward Observatory spectropolarimetric monitoring project were used. This programme is supported by Fermi Guest Investigator grants NNX08AW56G, NNX09AU10G, NNX12AO93G, and NNX15AU81G. We thank the anonymous referee for his/her comments that helped to improve the manuscript.

## DATA AVAILABILITY

All the data are publicly available at the Steward Observatory blazar monitoring programme webpage: <http://james.as.arizona.edu/~psmith/Fermi/>.

## REFERENCES

- Abdo A. A. et al., 2010, *ApJ*, 716, 30  
 Ajello M. et al., 2020, *ApJ*, 892, 105  
 Angelakis E. et al., 2016, *MNRAS*, 463, 3365  
 Blinov D. et al., 2015, *MNRAS*, 453, 1669  
 Blinov D. et al., 2016a, *MNRAS*, 457, 2252  
 Blinov D. et al., 2016b, *MNRAS*, 462, 1775  
 Blinov D. et al., 2018, *MNRAS*, 474, 1296  
 Blinov D. et al., 2021, *MNRAS*, 501, 3715  
 Carnerero M. I. et al., 2015, *MNRAS*, 450, 2677  
 Carnerero M. I. et al., 2017, *MNRAS*, 472, 3789  
 Covino S. et al., 2015, *A&A*, 578, A68  
 Danforth C. W., Nalewajko K., France K., Keeney B. A., 2013, *ApJ*, 764, 57  
 Fitzpatrick E. L., 1999, *PASP*, 111, 63  
 Fraija N. et al., 2017, *ApJS*, 232, 7  
 Ghisellini G., Tavecchio F., Foschini L., Ghirland A. G., Maraschi L., Celotti A., 2010, *MNRAS*, 402, 497  
 Gupta A. C. et al., 2017, *MNRAS*, 472, 788  
 Heiles C., 2000, *AJ*, 119, 923  
 Hodge M. A., Lister M. L., Aller M. F., Aller H. D., Kovalev Y. Y., Pushkarev A. B., Savolainen T., 2018, *ApJ*, 862, 151  
 Hovatta T. et al., 2016, *A&A*, 596, A78  
 Kiehlmann S. et al., 2016, *A&A*, 590, A10  
 Kiehlmann S., Blinov D., Pearson T. J., Liodakis I., 2017, *MNRAS*, 472, 3589  
 Kiehlmann S. et al., 2021, *MNRAS*, 507, 225  
 Laing R. A., 1980, *MNRAS*, 193, 439  
 Larionov V. M. et al., 2013, *ApJ*, 768, 40  
 Larionov V. M. et al., 2016, *MNRAS*, 461, 3047  
 Larionov V. M. et al., 2020, *MNRAS*, 492, 3829  
 Lyutikov M., Kravchenko E. V., 2017, *MNRAS*, 467, 3876  
 MAGIC Collaboration et al., 2020, *A&A*, 637, A86  
 Maraschi L., Ghisellini G., Celotti A., 1992, *ApJ*, 397, L5  
 Marscher A. P., 2014, *ApJ*, 780, 87  
 Marscher A. P. et al., 2008, *Nature*, 452, 966  
 Marscher A. P. et al., 2010, *ApJ*, 710, L126  
 Nalewajko K., 2017, *Galaxies*, 5, 64

- Otero-Santos J., Acosta-Pulido J. A., Becerra González J., Luashvili A., Castro Segura N., González-Martín O., Raiteri C. M., Carnerero M. I., 2022, *MNRAS*, 511, 5611  
 Paatero P., Tapper U., 1994, *Environmetrics*, 5, 111  
 Pavlidou V. et al., 2014, *MNRAS*, 442, 1693  
 Pearson K., 1900, *The London, Edinburgh, and Dublin Phil. Mag. J. Sci.*, 50, 157  
 Raiteri C. M., Villata M., 2021, *Galaxies*, 9, 42  
 Raiteri C. M. et al., 2006, *A&A*, 459, 731  
 Raiteri C. M., Villata M., Capetti A., Heidt J., Arnaboldi M., Magazzù A., 2007, *A&A*, 464, 871  
 Raiteri C. M. et al., 2012, *A&A*, 545, A48  
 Raiteri C. M. et al., 2013, *MNRAS*, 436, 1530  
 Raiteri C. M. et al., 2014, *MNRAS*, 442, 629  
 Schlafly E. F., Finkbeiner D. P., 2011, *ApJ*, 737, 103  
 Serkowski K., Mathewson D. S., Ford V. L., 1975, *ApJ*, 196, 261  
 Smith P. S., 1996, in Miller H. R., Webb J. R., Noble J. C. eds, ASP Conf. Ser. Vol. 110, Blazar Continuum Variability. Astron. Soc. Pac., San Francisco, p. 135  
 Smith P. S., 2017, *Astron. Telegram*, 11047, 1  
 Sosa M. S., von Essen C., Andruchow I., Cellone S. A., 2017, *A&A*, 607, A49  
 Torres-Zafra J., Cellone S. A., Buzzoni A., Andruchow I., Portilla J. G., 2018, *MNRAS*, 474, 3162  
 Urry C. M., Padovani P., 1995, *PASP*, 107, 803  
 Vanden Berk D. E. et al., 2001, *AJ*, 122, 549  
 Vaughan S., Edelson R., Warwick R. S., Uttley P., 2003, *MNRAS*, 345, 1271  
 Zhang H., Chen X., Böttcher M., 2014, *ApJ*, 789, 66  
 Zhang H., Deng W., Li H., Böttcher M., 2016, *ApJ*, 817, 63  
 Zhang H., Li X., Guo F., Giannios D., 2018, *ApJ*, 862, L25

## SUPPORTING INFORMATION

Supplementary data are available at *MNRAS* online.

- Figure S1.** Polarization-flux diagrams for galaxy-dominated blazars (same description as Fig. 2).  
**Figure S2.** Polarization-flux diagrams for BL Lac objects.  
**Figure S3.** Polarization-flux diagrams for FSRQs (same description as Fig. 4).  
**Figure S4.** Long-term polarization light curves of H 1426 + 428.  
**Figure S5.** Long-term polarization light curves of Mkn 501.  
**Figure S6.** Long-term polarization light curves of 1ES 2344 + 514.  
**Figure S7.** Long-term polarization light curves of 3C 66A.  
**Figure S8.** Long-term polarization light curves of AO 0235 + 164.  
**Figure S9.** Long-term polarization light curves of S5 0716 + 714.  
**Figure S10.** Long-term polarization light curves of PKS 0735 + 178.  
**Figure S11.** Long-term polarization light curves of OJ 287.  
**Figure S12.** Long-term polarization light curves of Mkn 421.  
**Figure S13.** Long-term polarization light curves of W Comae.  
**Figure S14.** Long-term polarization light curves of H 1219 + 305.  
**Figure S15.** Long-term polarization light curves of 1ES 1959 + 650.  
**Figure S16.** Long-term polarization light curves of PKS 2155-304.  
**Figure S17.** Long-term polarization light curves of BL Lacertae.  
**Figure S18.** Long-term polarization light curves of PKS 0420-014.  
**Figure S19.** Long-term polarization light curves of PKS 0736 + 017.  
**Figure S20.** Long-term polarization light curves of OJ 248.  
**Figure S21.** Long-term polarization light curves of Ton 599.  
**Figure S22.** Long-term polarization light curves of PKS 1222 + 216.  
**Figure S23.** Long-term polarization light curves of 3C 273.  
**Figure S24.** Long-term polarization light curves of 3C 279.  
**Figure S25.** Long-term polarization light curves of PKS 1510-089.  
**Figure S26.** Long-term polarization light curves of B2 1633 + 38.  
**Figure S27.** Long-term polarization light curves of 3C 345.  
**Figure S28.** Long-term polarization light curves of CTA 102.

**Figure S29.** Long-term polarization light curves of 3C 454.3.

Please note: Oxford University Press is not responsible for the content or functionality of any supporting materials supplied by the authors. Any queries (other than missing material) should be directed to the corresponding author for the article.

## APPENDIX A: INDIVIDUAL REMARKS

Here, we include individual remarks for the sources considered in the polarization analysis carried out in this study.

### A1 Galaxy-dominated Sources

#### A1.1 H 1426+428

This is the blazar with the lowest observed polarization fraction of the three galaxy-dominated sources, with values  $<2$  per cent prior to the host galaxy correction, and reaching fractions of  $\sim 3.5$  per cent after accounting for the depolarizing effect. Its flux is rather stable during its short monitored period (see Fig. S4). No EVPA rotations were observed in the variability of the EVPA for this source. The total and polarized spectral indices adopt different values, with a higher variability of the latter ( $\alpha_{\text{pol}} \sim -0.3$ – $2.5$ ) in comparison to former ( $\alpha_{\text{tot}} \sim 1.3$  –  $-1.4$ ). This is due to the dominance of the host galaxy on the total spectra, as reported in Section 4.6.1, masking its real variability.

#### A1.2 Mkn 501

It is the only galaxy-dominated blazar showing EVPA swings. It displays a slow non-smooth rotation lasting  $\sim 500$  d at the beginning of the monitoring programme, with a swing of more than  $100^\circ$  (see Fig. S5). After this rotation, the EVPA stays rather stable  $-50^\circ$ . As for the other galaxy-dominated sources, the polarization degree of Mkn 501 is rather low in comparison with BL Lac objects and FSRQs, as well as its variability.

#### A1.3 IES 2344+514

As for the other two galaxy-dominated blazars, IES 2344+514 shows a low polarization fraction ( $<6$  per cent before host galaxy correction) and a very stable EVPA. Its polarized flux shows one of the lowest variability among the blazar sample, ranging from  $\sim 3 \times 10^{-15}$  to  $\sim 4 \times 10^{-15}$  erg cm $^{-2}$  s $^{-1}$  (see Fig. S6). The total spectral index also shows a very narrow variability range ( $\alpha_{\text{tot}} \sim 0.8$  –  $-1.0$ ), in contrast with the highly variable polarized index ( $\alpha_{\text{pol}} \sim 0.0$  –  $-2.5$ ).

### A2 BL Lac Objects

#### A2.1 3C 66A

This object displays two non-smooth rotations around MJD 56600 and MJD 57050, approximately, one of them deviating from the power-law fit describing the relation between the amplitude and the rate of the rotations detected here. 3C 66A displays preferred orientations of the EVPA. However, contrary to the rest of the BL Lacs with such behaviour, it presents a double peak in the EVPA distribution. During the period prior to the non-smooth rotations, the EVPA is stable at approximately  $25^\circ$ . After these events, the peak is observed at  $-20^\circ$ . During these two events,  $\alpha_{\text{tot}}$  and  $\alpha_{\text{pol}}$  show a

correlated variability, with a correlation coefficient  $r = 0.60$ , with a p-value =  $10^{-35}$ .

#### A2.2 AO 0235+164

Roughly the same variability range is observed for  $\alpha_{\text{tot}}$  and  $\alpha_{\text{pol}}$ . However, there is no correlation between both indices, following the FSRQ-like behaviour rather than the mild correlation shown by BL Lacs. This is consistent with the fact that this blazar has shown several times mixed properties between both blazar classes (Raiteri et al. 2007, 2014). The NMF reconstruction derives a component consistent with the presence of a BLR visible during low flux states (see OS22). Another indication of this comes from the uniform EVPA distribution displayed by this source, more typical of FSRQs.

#### A2.3 S5 0716+714

This BL Lac object presents several EVPA rotations in its long-term evolution, as reported in Table 2 (see Fig. S9). As an example, we highlight one of these events, occurring on MJD 57000 simultaneous to optical flares. The polarized spectral index measured during this event ranges between  $\alpha_{\text{pol}} \sim 0.9$  –  $-1.2$ . We observe that this variation coincides with that from the two NMF components dominating the emission during the flare, C1 and C2 with indices  $\alpha_1 = 0.89$  and  $\alpha_2 = 1.17$ , respectively. This points towards a common origin of these components, the optical flare, and the observed polarization variability. The variability of  $\alpha_{\text{pol}}$  for this source is consistent with that shown by both  $\alpha_{\text{tot}}$  and the indices of the NMF components derived in OS22.

#### A2.4 PKS 0735+178

This BL Lac is one of the least monitored during the 10-yr period considered here. Its variability is also low, and the EVPA varies between  $0^\circ$  and  $100^\circ$  approximately; however, without displaying any EVPA rotation (see Fig. S10).

#### A2.5 OJ 287

The evolution of the EVPA for this object shows a slow decreasing trend, varying from roughly  $180^\circ$  to  $120^\circ$  in approximately 2000 d. After this period on MJD 57000, and anticipating a bright flare occurring on MJD 57300, a counter-clockwise non-smooth rotation takes place, leading to an orientation of the EVPA at  $\sim 360^\circ$  (see Fig. S11). Then, simultaneously to the flare, a second clockwise non-smooth rotation happens, leading to a total EVPA swing of more than  $400^\circ$ . During these events, the total and polarized indices vary correlated with values  $\sim 1.0$ , compatible with the slopes of the NMF components that dominate during the flare (see OS22). This BL Lac displays a very clear correlation between  $\alpha_{\text{tot}}$  and  $\alpha_{\text{pol}}$ , with a linear correlation coefficient  $r = 0.70$  (p-value =  $10^{-75}$ ). Both indices vary roughly in the same interval, coincident with that from the different NMF components ( $\alpha \sim 0.5$  –  $-1.2$ ).

#### A2.6 Mkn 421

Several rotations are observed in the evolution of the EVPA in Mkn 421. One of them happens simultaneously with an optical flux increase on MJD 55600, while another one is observed right before the highest emission detected for this source in this 10-yr period on MJD 56400, approximately, as represented in Fig. S12. As

reported in OS22, during this event the component C2 from the NMF reconstruction dominates the emission of this flare, with  $\alpha_2 = 2.15$ . This index is compatible with those measured during the rotation,  $\alpha_{\text{pol}} \sim 1.8\text{--}2.2$ , suggesting a common origin of the flare and the EVPA swing.

#### A2.7 *W Comae*

Five rotations are identified in the long-term evolution the EVPA of *W Comae* (see Fig. S13). The first four occur during a low emission state, when the contributions of the three NMF components derived in OS22 are comparable. The last one is detected during the flare that takes place on MJD 58250, approximately, and dominated by C2 ( $\alpha_2 = 1.13$ ). The total index during this event changes from values around 0.5 before the flare to around 1.0, compatible with the index of C2. The polarized spectral index varies around 1.2, showing consistent values.

#### A2.8 *H 1219+305*

As for PKS 0735+178, the data sample of this BL Lac is rather low w.r.t. the most monitored blazars. We observe a low polarization degree ( $P < 7$  per cent) and a stable EVPA. No EVPA rotations are detected in the polarization angle variability of *H 1219+305*.

#### A2.9 *IES 1959+650*

This source is one of the least variable BL Lac objects. It shows a stable EVPA and a rather low polarization degree ( $\sim 2.5\text{--}9$  per cent), as shown in Fig. S15. No EVPA rotations are observed for this source. This is consistent with the fact that some hints of the host galaxy were observed in OS22. The polarized spectral index shows values between 1.0 and 2.0, approximately, while the total spectral index varies between 0.6 and 1.5.

#### A2.10 *PKS 2155-304*

The EVPA is mainly oriented in the angle range between  $60^\circ$  and  $90^\circ$ , showing only a few rotations during the 10-yr period. Despite the variability displayed by this BL Lac object, no apparent connections between the rotations, the polarization degree and the flux variability are observed. These rotations are represented in Fig. S16. The polarized spectral index varies within a range  $\alpha_{\text{pol}} \sim 1.0 - -2.5$ , similar to the total spectral index,  $\alpha_{\text{tot}} \sim 1.0 - -2.1$ .

#### A2.11 *BL Lacertae*

A clear preferred EVPA orientation of  $13^\circ$  is observed for this source. Moreover, a large number of rotations are observed for *BL Lacertae*, being the object of the sample with the highest number of rotations identified (see Fig. S17), as reported in Table 2. However, as for PKS 2155–304, no evident relation with the flux or the NMF components is observed, with several rotations appearing during both high and low emission states. Both the total and spectral indices adopt values between 0.0 and 1.0, approximately. However, no strong correlation is observed in their variability.

### A3 FSRQs

#### A3.1 *PKS 0420–014*

Despite the short time coverage of this FSRQ, a clear smooth rotation starting on MJD 55150 appears (see Fig. S18), coincident with the highest emission state displayed by PKS 0420–014. During this event both spectral indices vary between 0.5 and 1.0. In addition, this rotation also occurs during an enhancement of the contribution coming from the component C2 of the NMF analysis, characterized by a consistent spectral index  $\alpha_2 = 0.89$ .

#### A3.2 *PKS 0736+017*

Several rotations are identified in the evolution of the EVPA for this FSRQ. The first one occurs simultaneously to the highest emission detected for this object in the monitored period. During this event, the total and polarized indices display values around 1.0, compatible with those from the dominant C2 and C3 components from the NMF analysis of OS22 during the development of this flare ( $\alpha_2 = 0.92$  and  $\alpha_3 = 0.50$ ). The second rotation is identified along a second flare, less bright than the first one, but also dominated by C3 and showing compatible indices for the total and polarized spectra. The rest of the rotations are observed during low emission states.

#### A3.3 *OJ 248*

This FSRQ shows a clear correlation of the polarization degree with the total flux, with an almost unpolarized low state, and reaching values of  $\sim 18$  per cent during the brightest state (higher than 20 per cent after correcting from the depolarizing effect of the BLR + AD). *OJ 248* also presents two rotations, coincident with the two peaks of the bright flare on MJD 56500, as shown in Fig. S20, during which the total and polarized spectral indices adopt approximate values between  $\alpha_{\text{tot}} \sim 1.3 - -2.3$  and  $\alpha_{\text{pol}} \sim 1.0 - -2.5$ , respectively. These events are also coincident with the dominance of components C3 and C2 of the NMF reconstruction, respectively, with indices  $\alpha_2 = 1.33$  and  $\alpha_3 = 1.06$ .

#### A3.4 *Ton 599*

A clockwise rotation is observed correlated with the flare occurring on MJD 56070 approximately (see Fig. S21), related with the component C3 of the reconstruction ( $\alpha_3 = 1.74$ ). During this event, the spectral indices  $\alpha_{\text{tot}}$  and  $\alpha_{\text{pol}}$  vary between 1.3 and 2.0, approximately, consistent with the spectral index of C3. An increase of the polarization degree is also measured. In addition, several rotations are detected in the low activity state right before and after the bright flare observed on MJD 58100, as shown in Fig. S21.

#### A3.5 *PKS 1222+216*

Contrary to the bulk of the FSRQ population, this blazar shows a clear preferential orientation of the EVPA at  $0^\circ$ . It also shows four rotations, three of them linked to an increase of the flux of the reconstructed components C2 and C4 of the NMF analysis from OS22, between MJD 55600 and MJD 56100 (see Fig. S22). These components have a spectral index  $\alpha_2 = 1.70$  and  $\alpha_4 = 0.52$ . The polarized spectral index shows values of  $\alpha_{\text{pol}} \sim 0.3 - -2.1$  in the period during which the rotations occur. However, the total spectra show somewhat higher indices ( $\alpha_{\text{tot}} \sim 2.2 - -3.3$ ). This could be due to the presence of a bright accretion disc, as reported in OS22,



that makes the total spectra steeper than the polarized spectra, where the only expected relevant contribution is the synchrotron emission of the jet.

### A3.6 3C 273

As can be seen from Fig. S23, 3C 273 is the least polarized blazar of the sample, with polarization degrees  $<1.6$  per cent. This is also one of the few FSRQs showing a stable EVPA, showing almost no variability in both the polarization degree and angle, as well as in its total optical emission, as reported in OS22. This peculiar behaviour for an FSRQ, typically more variable and more polarized than BL Lac objects, may be due to the fact that the optical emission of this source is dominated by its bright accretion disc, as reported by Raiteri et al. (2014) and in OS22. Therefore, the very low contribution to the polarized emission may be due to a very faint synchrotron emission, as well as a possible contamination from the interstellar medium or the accretion disc itself. Given the very low variability displayed by the EVPA, no rotations are observed for 3C 273.

### A3.7 3C 279

This FSRQ is the only source of this type showing a clear correlation between  $\alpha_{\text{tot}}$  and  $\alpha_{\text{pol}}$ . The measured linear correlation coefficient for these indices is  $r = 0.62$  (p-value =  $10^{-53}$ ). Moreover, it is also one of the few FSRQs with a preferred EVPA orientation, contrary to the commonly observed uniform distribution for these sources. The EVPA is oriented towards  $\sim 50^\circ$ , as reported in Table 2. One of the rotations observed for 3C 279 appears coincident with the enhanced state measured at MJD 58150 (see Fig. S24). The NMF reconstruction from OS22 reports a dominance of components C2 and C4, with  $\alpha_2 = 1.20$  and  $\alpha_4 = 1.05$ . The polarized spectral index varies around  $\alpha_{\text{pol}} \sim 1.25$  during this rotation, similar to the components contributing the most to the optical emission, and suggesting a connection of this rotation and the flare. Larionov et al. (2020) report a predominance of a helical magnetic field, which could be in line with the preferred orientation shown by 3C 279.

### A3.8 PKS 1510–089

The highly variable polarized emission of PKS 1510–089 shows a large number of rotations. Some of these events are found connected to optical flares, mostly coming from the same behaviour in the NMF component C3 ( $\alpha_3 = 2.52$ ). However, this is not a general behaviour for this FSRQ, as some rotations are also observed during low emission states. It also presents non-smooth rotations, following the same rate-duration relation represented in Fig. 10.

### A3.9 B2 1633+38

Several smooth rotations are observed in the highly variable behaviour of the polarization angle displayed by B2 1633+38, as shown in Fig. S26. However, no clear association with flaring states or NMF components is observed. Moreover, four slow and non-smooth rotations are also present in the evolution of the polarization of this

object. The first one takes place on MJD 56000, approximately. The first of the three remaining starts on MJD 56700 and the next two occur consecutively, with a duration of  $\sim 500$ – $800$  d and swings  $>300^\circ$ . As for the case of PKS 1222+216, this FSRQ also shows total spectral index values ( $\alpha_{\text{tot}} \sim 1.3 - 3.0$ ) slightly higher than those derived from the polarized spectra ( $\alpha_{\text{pol}} \sim 0.1 - 2.2$ ). Again, this could be due to the presence of a bright accretion disc affecting the total spectral index values, as reported in OS22.

### A3.10 3C 345

It shows an orientation of the EVPA towards  $\theta \sim -52^\circ$ . However, the low amount of data may be introducing a bias in the determination of the polarization angle distribution. Moreover, it shows a fast smooth rotation coincident with its brightest flare, at MJD 55100. This EVPA swing also corresponds with an enhancement of the component C2 of the NMF reconstruction, with a spectral index  $\alpha_2 = 1.39$ . The total and spectral indices adopt similar values between 1.4 and 2.0 approximately during this event, compatible with that from the NMF component C2 responsible for the flare.

### A3.11 CTA 102

This blazar shows the typical lack of correlation between the total and polarized spectral indices observed for FSRQs. During a bright flare corresponding to the brightest optical state observed in this monitoring, occurring on MJD 57750 approximately, two EVPA rotations are also observed (see Fig. S28). As reported in OS22, this flare is described with the component C2, with  $\alpha_2 = 1.23$ . The measured polarized spectral index in this period is similar to that derived of C2, with  $\alpha_{\text{pol}} \sim 1.5$ . Another important feature of CTA 102 is a clear increase of the polarization degree during its EVPA rotations, contrary to the behaviour reported for the bulk of the population.

### A3.12 3C 454.3

This is one of the most variable sources of the sample, with several bright flares dominating its optical emission. The spectral indices  $\alpha_{\text{tot}}$  and  $\alpha_{\text{pol}}$  show no correlation in their variability. During two enhanced optical states occurring at MJD 55200 and MJD 56800, we observe three EVPA rotations that happen simultaneously. One of them is coincident with a minor flare on MJD 55200, and the two remaining are coincident with the brightest flare on MJD 56850, approximately. These events can be seen in Fig. S29. The spectral variability of these events suggests, as already claimed for other sources, a common origin of the flux and polarization variability, with total and polarized spectral indices  $\alpha_3 = 0.89$  and  $\alpha_{\text{pol}} \sim 1.0$  for the first flare, and  $\alpha_2 = 0.54$  and  $\alpha_{\text{pol}} \sim 0.5$  for the second one, where  $\alpha_3$  and  $\alpha_2$  correspond to the indices of the NMF components C3 and C2, respectively. These components are the ones dominating the emission during each of these flares, as reported by OS22.

This paper has been typeset from a  $\text{\TeX}/\text{\LaTeX}$  file prepared by the author.