



HAL
open science

Cerambycidae (Coleoptera) from Ecuador and Central America: new species and new country records.

Vlasak Josef, Antonio Santos Silva

► **To cite this version:**

Vlasak Josef, Antonio Santos Silva. Cerambycidae (Coleoptera) from Ecuador and Central America: new species and new country records.. *Faunitaxys*, 2023, 11 (40), pp.1-12. hal-04142313

HAL Id: hal-04142313

<https://hal.science/hal-04142313v1>

Submitted on 26 Jun 2023

HAL is a multi-disciplinary open access archive for the deposit and dissemination of scientific research documents, whether they are published or not. The documents may come from teaching and research institutions in France or abroad, or from public or private research centers.

L'archive ouverte pluridisciplinaire **HAL**, est destinée au dépôt et à la diffusion de documents scientifiques de niveau recherche, publiés ou non, émanant des établissements d'enseignement et de recherche français ou étrangers, des laboratoires publics ou privés.



Distributed under a Creative Commons Attribution - NonCommercial - NoDerivatives 4.0 International License

Faunitaxys

*Revue de Faunistique, Taxonomie et Systématique
morphologique et moléculaire*



Volume 11
Numéro 40

Juin 2023

ISSN (Print) : 2269 - 6016
ISSN (Online) : 2970 - 4960
Dépôt légal : Juin 2023

Faunitaxys

*Revue de Faunistique, Taxonomie et Systématique
morphologique et moléculaire*

ZooBank : <http://zoobank.org/79A36B2E-F645-4F9A-AE2B-ED32CE6771CC>

Directeur de la publication, rédacteur, conception graphique et PAO:

Lionel Delaunay

Cette revue ne peut pas être vendue

Elle est distribuée par échange aux institutions (version papier)

et sur simple demande aux particuliers (format PDF)

à l'adresse suivante:

AFCFF (Association française de Cartographie de la Faune et de la Flore)

28, rue Voltaire, F- 42100 Saint Etienne

E-mail: faunitaxys.journal@gmail.com

Elle est disponible librement au téléchargement à partir du site:

<http://faunitaxys.fr/>

La parution de *Faunitaxys* est apériodique

Faunitaxys est indexé dans / *Faunitaxys* is indexed in:

- **Zoological Record**

Articles and nomenclatural novelties are referenced by:

- **ZooBank** (<http://zoobank.org>)

Online Archives:

- **HAL** (<https://hal.archives-ouvertes.fr>)

- **Internet Archive** (<https://archive.org>)

Imprimée sur les presses de SPEED COPIE, 6, rue Tréfilerie, F- 42100 Saint-Etienne

Imprimé le 18 06 2023

Cerambycidae (Coleoptera) from Ecuador and Central America: new species and new country records

JOSEF VLASAK (1, *) & ANTONIO SANTOS-SILVA (2)

(1) 207 Silverbrook Drive, Schwenksville, PA 19473, U.S.A.

- josef_vlasak@merck.com - Orcid: <https://orcid.org/0000-0001-7514-0305>

- ZooBank: <http://zoobank.org/DAAADDC5-8B0E-49FE-925B-F9E481973E10>

(2) Museu de Zoologia, Universidade de São Paulo, Avenida Nazaré # 481, 04263-000, São Paulo, SP, Brazil.

- toncriss@uol.com.br - Orcid: <https://orcid.org/0000-0001-7128-1418>

- ZooBank: <http://zoobank.org/147209A1-FA0E-4AE3-8F10-A5CADAB6EE98>

* Corresponding author

Keywords:

Coleoptera;
Cerambycidae;
new species;
taxonomy;
description;
Central America;
Neotropical region;
South America.

Abstract. – Three new species are described from Ecuador: *Strangalia tricolor* sp. nov. (Lepturinae, Lepturini); *Atimiola grisea* sp. nov. and *A. inflaticornis* sp. nov. (Lamiinae, Desmiphorini). New country records are provided: *Acutandra ubitiara* (Santos-Silva & Martins, 2000) (Parandrinae, Parandrini) from Costa Rica; *Phoebe albaria* (Bates, 1872) (Lamiinae, Hemilophini) from Ecuador.

Vlasak J. & Santos-Silva A., 2023. – Cerambycidae (Coleoptera) from Ecuador and Central America: new species and new country records. *Faunitaxys*, 11(40): 1 – 12.

DOI: [https://doi.org/10.57800/faunitaxys-11\(40\)](https://doi.org/10.57800/faunitaxys-11(40))

ZooBank: <http://zoobank.org/ABD95A85-3521-4EF7-BF68-910AFAF68579>

Received: 26/05/2023 – Revised: 10/06/2023 – Accepted: 11/06/2023

Introduction

Strangalia Dejean, 1835 is a large genus in the subfamily Lepturinae, containing 103 species worldwide (Tavakilian & Chevillotte 2022). The majority (85) is found in the Americas, distributed from North to South America, including the Caribbean (Bezark 2023). Here we describe a new species from Ecuador.

Atimiola Bates, 1880 is a small genus of Desmiphorini, currently with two species (Monné 2023, Tavakilian & Chevillotte 2022). *A. guttulata* Bates, 1880 is distributed from Mexico (Chiapas) to Costa Rica. *Atimiola rickstanleyi* Lingafelter & Nearn, 2007 occurs on the island of Hispaniola. Two additional species are described herein from Ecuador, one from the western and the other from eastern slopes of the Andes.

Material and Methods

Photographs were taken at MZSP with a Canon EOS TD Mark II camera and Canon MP-E 65 mm f/2.8 1-5X macro lens, controlled by Zerene Stacker AutoMontage software. Measurements were taken in “mm” using measuring ocular Hensoldt/Wetzlar - Mess 10 in the Leica MZ6 stereomicroscope, also used in the study of the specimens. References to known species are restricted to the original descriptions. The specimens listed in “Material examined” are only those used to establish the new record.

The collection acronyms used in the text are as follows:

– JVCO: Josef Vlasak Collection, Schwenksville, Pennsylvania, USA

– MZSP: Museu de Zoologia, Universidade de São Paulo, São Paulo, Brazil

Results

LEPTURINAE Latreille, 1802

LEPTURINI Latreille 1802

Strangalia Dejean, 1835

Strangalia tricolor sp. nov.

(Fig. 1-5)

ZooBank: <http://zoobank.org/40CC1C7D-FE50-4AED-8B3E-9B1B64EC5157>

Holotype, ♀, ECUADOR, *Napo*: Wawa Sumaco, 1400 m, 29.IX.2021, J. Vlasak leg. (MZSP).

Description of the holotype

Coloration. – Mostly black; ventral mouthparts dark brown, except pa Integument Ipmemes black with apex dark yellowish brown. Elytra with four yellowish-brown maculae, one subcircular located basally on dorsal surface, one transverse, slightly oblique, with its anterior margin rounded and its posterior margin concave, located dorsally near apex of anterior third, one transverse, located slightly behind middle, almost reaching epipleural margin, not reaching suture, another transverse, located about posterior fifth, almost reaching epipleural and sutural margins. Femora dark brown basally, black apically, orangish on wide central area. Abdominal ventrite 4 mostly reddish brown; basal half of ventrite 5 reddish brown.

Head. – Frons with anterior plate large, triangular, smooth, glabrous, except transversely, finely striate central area close to clypeus; sides elevated, smooth, glabrous; remaining surface of frons densely, moderately coarsely punctate; with abundant, short, erect black setae not obscuring integument, and long, erect setae interspersed, setae

Reviewer :

Steve Lingafelter (USA) - <http://zoobank.org/8CB85FB5-19CF-4357-81E3-FE9BFC9B04AA>



This is an open access article under the terms of the Creative Commons Attribution-NonCommercial-NoDerivs License, which permits use and distribution in any medium, provided the original work is properly cited, the use is non-commercial and no modifications or adaptations are made.

Copyright 2023 The Authors. *Faunitaxys* published by Lionel Delaunay on behalf of the AFCFF (Association française de Cartographie de la Faune et de la Flore).

black basally, gradually pale toward apex. Area of vertex between antennal tubercles and posterior constriction of head densely, moderately coarsely punctate, with a few coarser punctures interspersed, except narrow smooth area close to superior region of eyes; area close to prothorax somewhat sparsely, finely punctate, punctures denser laterally; nearly all punctures before posterior constriction of head with short, erect dark seta and some punctures with long, erect pale seta; punctures on area of posterior constriction of head with minute, erect dark seta. Area behind eyes densely, moderately coarsely punctate on superior area close to eye, with a few coarse, shallow punctures on remaining surface close to eye; remaining surface moderately abundantly, shallowly punctate; some punctures with minute pale seta. Genae densely, moderately coarsely punctate close to frons and clypeus, except smooth apex, sparsely punctate toward ventral surface; punctures with minute, erect dark seta. Clypeus abundantly, coarsely punctate centrally close to frons; remaining central surface gradually sparsely and finely punctate toward smooth apex; area close to frons with moderately abundant, short, erect dark setae and remaining punctures with pale erect setae, setae longer laterally and toward smooth area. Labrum with transverse row of coarse punctures with long, erect, pale seta on posterior third; sides with moderately abundant, long, erect, brownish setae; remaining surface glabrous except anterior margin with fringe of dark-brown setae. Maxillary palpomere IV fusiform. Gula mentum smooth, glabrous on posterior third, coarsely rugose, glabrous between posterior third and middle, abundantly, coarsely punctate on anterior half, most punctures with a short, brownish seta and some lateral punctures with a long, erect pale seta. Distance between upper eye lobes 0.52 times distance between outer margins of eyes; in frontal view, distance between lower eye lobes 0.62 times distance between outer margins of eyes; in ventral view, distance between lower eye lobes 0.64 times distance between outer margins of eyes. Antennae about as long as elytra, slightly surpassing middle of elytra. Scape abundantly, finely punctate; with abundant, short, bristly blackish setae. Pedicel with sculpturing as on scape; with abundant, short blackish setae directed backward, setae longer than on scape and slightly more abundant ventrally. Antennomeres III–IV with sculpturing as on scape, slightly widened from base to apex; with abundant, decumbent blackish setae not obscuring integument dorsally and laterally, setae slightly longer and more abundant than on scape, projected backward on apex of dorsal surface, setae distinctly bristly and denser ventrally, thicker on apical third of III, throughout on IV. Antennomere V with sculpturing as on scape, distinctly widened from base to apex; setae as on IV. Antennomeres VI–X densely, minutely punctate; with dense blackish pubescence partially obscuring integument, and short blackish setae directed backward on apex. Antennomere XI densely, minutely punctate, parallel-sided on basal 2/3, curved toward apex on ventral surface.

Antennal formula (ratio) based on length of antennomere III:

– Scape = 0.76. – Pedicel = 0.15. – IV = 0.83. – V = 1.00. – VI = 0.65. – VII = 0.55. – VIII = 0.46. – IX = 0.45. – X = 0.41. – XI = 0.60.

Thorax. – Prothorax slightly wider than long; sides distinctly divergent from anterolateral angles to spiniform posterolateral angles. Pronotum abundantly, moderately coarsely punctate, punctures transverse, except smooth area close to posterior margin, smooth anterocentral eight, smooth, narrow longitudinal band on center of remaining anterior region, almost reaching apex of anterior third, and smooth, narrow, longitudinal band on center of posterior 2/3; each puncture with short dark-brown seta, except a few punctures on posterior quarter with long, erect brownish seta; with one coarse, circular puncture with one long, erect yellowish-brown seta on each side of posterior quarter. Sides of prothorax abundantly, moderately coarsely punctate except subsmooth area close to anterior margin, this area gradually widened toward prosternum, and subsmooth area close to posterior margin; punctures with short, bristly brownish seta. Prosternum smooth laterally close to sides of prothorax, abundantly, coarsely punctate on remaining posterior third, punctures transverse, almost smooth on central third, and somewhat sparsely, finely punctate on remaining anterior third; posterior third with moderately abundant, short, yellowish-white setae not obscuring integument, sides glabrous, and remaining anterocentral 2/3 with a few short yellowish-white setae. Prosternal process laminiiform centrally; with abundant

yellowish-white pubescence, distinctly denser on widened apical region. Mesoventrite abundantly, finely punctate, except almost smooth apex of lateral surface; with moderately sparse yellowish-white pubescence except glabrous smooth area. Mesanepisternum and mesepimeron abundantly, finely punctate, with moderately abundant yellowish-white pubescence not obscuring integument, punctures and pubescence sparser on center of mesanepisternum. Mesoventral process with abundant yellowish-white pubescence not obscuring integument; apical width 0.46 times mesocoxal width. Metanepisternum with abundant yellowish pubescence basally, pubescence distinct sparser on remaining surface. Metaventrite moderately abundantly finely punctate, except smooth area close to metathoracic discrimen; with abundant yellowish pubescence on sides of anterior third, pubescence sparser on remaining surface, except glabrous area close to metathoracic discrimen. Scutellum subtriangular; with sparse brownish pubescence.

Elytra. – Distinctly narrowed from rounded humerus to apex; apex obliquely truncate, triangularly projected on outer angle and shortly projected on sutural angle; dark area with abundant blackish pubescence not obscuring integument; yellowish-brown maculae with moderately abundant yellowish pubescence not obscuring integument.

Legs. – Femora abundantly, finely punctate, except subsmooth posterior half of ventral surface and basal 2/3 of inner surface of meso- and metafemora, and most of basal 2/3 of profemora; pro-, meso- and metafemora with sparse yellowish-white pubescence on basal 2/3, except glabrous inner surface of basal 2/3 of meso- and metafemora, and moderately abundant blackish pubescence on posterior third, except glabrous ventral surface of posterior third; metafemora carinate dorsally on basal third. Tibiae densely, finely punctate; protibiae with abundant blackish pubescence not obscuring integument, except dense, bristly dark pubescence on sides of posterior third and on posterior half of ventral surface; meso- and metatibiae with abundant blackish pubescence not obscuring integument, except denser, bristly dark-brown pubescence on apical third of ventral surface. Metatarsomere I 1.9 times longer than II–III together; metatarsomere II 2.5 times longer than III.

Abdomen. – Ventrites 1–4 with apical margin crenulated (Fig. 5); 1–3 densely, finely punctate on sides of anterior region, this area not reaching lateral margin, sparsely, finely punctate on remaining surface, except smooth apex; 4–5 sparsely, finely punctate; posterocentral region of ventrite 5 gradually depressed toward apex; densely punctate area on ventrites 1–3 with abundant yellowish-white pubescence, and remaining surface with sparse, short, decumbent yellowish-white setae; ventrites 4–5 with sparse, decumbent yellowish-white setae. Apex of ventrite 5 and apical tergite with long pale-yellow setae directed backward.

Dimensions (mm)

– Total length, 13.70;
– Prothoracic length, 2.45;
– Anterior prothoracic width, 1.25;
– Posterior prothoracic width, 2.55;
– Humeral width, 3.15;
– Elytral length, 8.65.

Etymology. – The name “*tricolor*” (Latin, meaning with three colors) refers to the three distinct body colors: black, yellow, and orange.

Remarks. – Among the South American species, *Strangalia tricolor* sp. nov. is similar to *S. flavocincta* (Thomson, 1860) (Fig. 6-11), but differs as follows (females): antennomeres VI–IX shorter and wider (Fig. 1); pronotal pubescence sparser, shorter, and dark. In *S. flavocincta*, the antennomeres VI–IX are longer and slender (Fig. 7), and the pronotal pubescence (Fig. 9) is more abundant, longer, and yellowish brown. It is also somewhat similar to *S. lachrymans* (Bates, 1885) (see photographs on Bezark 2023) but differs especially by the anterior yellowish-brown macula on elytra not longitudinal (longitudinal in *S. lachrymans*), and by the elytral apex



Fig. 1-5. *Strangalia tricolor*, holotype ♀.

1-3. Habitus. 1. Dorsal. 2. Ventral. 3. Lateral. 4. Head, frontal view. 5. Abdominal ventrites 2-3.

not strongly oblique, making the outer angle very projected (strongly oblique making the outer angle very projected in *S. lachrymans*); it differs from *S. saltator* (Bates, 1885) (see photographs on Bezark 2023) by the pronotum entirely black (bicolor in *S. saltator*), elytral punctures distinctly finer and more abundant (coarser and less abundant in *S. saltator*), and femora black basally (not black basally in *S. saltator*); and from *S. sexocellata* Hovore & Chemsak, 2005, not considering elytral and femoral colors, by the sides of the prothorax not sinuate (sinuate in *S. sexocellata*). Dark areas within the subcircular yellowish-brown maculae on elytral base have formed during drying of the specimen. Originally, the maculate had a smooth margin.

LAMIINAE Latreille, 1825

DESMIPHORINI Thomson, 1860

Atimiola Bates, 1880

Atimiola grisea sp. nov.

(Fig. 12-21)

ZooBank: <http://zoobank.org/B4146AE6-5F05-41CE-B6BB-75C533F62CA>

Holotype, ♀ (Fig. 12-17), ECUADOR, *Pichincha*: Nanegal, 1300 m, 27.IX.2021, J. Vlasak leg. (MZSP).

Paratype, ♂, same data as holotype (JVCO).

Description

Coloration. – Integument mostly black; ventral mouth parts brown except palpomeres dark brown with apex dark yellowish brown; anteclypeus with irregular dark reddish-brown areas; labrum reddish brown about anterior quarter; scape dark reddish brown basally, blackish on remaining surface; pedicel dark reddish brown except dark-brown apex; antennomere III dark reddish brown except dark-brown posterior third of outer surface; antennomere IV reddish brown about basal 2/3, dark brown on apical third; antennomeres V–X orangish brown basally (this area gradually larger toward X), gradually dark brown on remaining surface; antennomere XI orangish brown about basal half, brownish on remaining surface. Elytra with dashed brownish band along sutural margin, this area gradually lighter toward apex; with irregular orangish-brown area close to apex. Trochanters dark reddish brown; femora dark reddish brown basally and apically, black on remaining surface; pro- and mesotibiae brown about basal 3/4, dark brown about apical quarter; protibiae dark brown basally, reddish brown on remaining surface; tarsi mostly dark reddish brown with irregular dark-brown areas, except dark yellowish-brown apical third of tarsomeres V and yellowish-brown claws.

Head. – Frons moderately abundantly, coarsely punctate, except small, triangular, smooth central area close to clypeus; with somewhat abundant dark-brown pubescence not obscuring integument, and both short and slender and long and thick white setae interspersed, both almost absent centrally; with one long, erect seta close to eyes, setae dark brown about their basal third, then gradually yellowish white toward their apex. Area between antennal tubercles and upper eye lobes somewhat rugose with coarse punctures interspersed, punctures absent centrally; with moderately abundant brown pubescence not obscuring integument, pubescence absent centrally, except moderately sparse white pubescence close to smooth central area between antennal tubercles; with a few long, thick, decumbent white setae interspersed between upper eye lobes. Area behind upper eye lobes with white pubescence not obscuring integument. Area behind lower eye lobes with abundant white pubescence close to eye, this area wide close to upper eye lobe; remaining surface with sparse whitish pubescence and a few long, thick, decumbent white setae interspersed. Genae finely rugose-punctate, except smooth apex; with sparse white pubescence on rugose-punctate area. Wide central area of postclypeus with sparse brownish pubescence; with short, decumbent white setae and long, erect setae interspersed, some erect setae entirely white and some dark basally and gradually pale toward their apex. Labrum minutely striate close to anteclypeus, somewhat abundantly and coarsely punctate centrally, smooth anteriorly; glabrous on striate area,

with abundant, long setae directed forward on punctate area, most setae dark basally and pale toward their apices, and anterior region almost glabrous. Antennal tubercles abundantly, moderately finely punctate; with abundant dark-brown pubescence not obscuring integument. Gulamentum smooth, glabrous, except intermaxillary process finely punctate, with moderately sparse brownish pubescence. Distance between upper eye lobes 0.26 times distance between outer margins of eyes; distance between lower eye lobes 0.54 times distance between outer margins of eyes. Antennae 1.45 times elytral length, reaching elytral apex at middle of antennomere X. Scape slightly, gradually widened basally, subcylindrical on remaining surface; densely, finely punctate; with abundant dark-brown pubescence not obscuring integument; ventral surface with moderately short, decumbent, slender white setae interspersed; with long, decumbent, thick white setae interspersed throughout. Pedicel with brownish pubescence not obscuring integument dorsally and laterally and abundant white pubescence not obscuring integument ventrally; with a few long, erect yellowish setae interspersed dorsally close to apex; with one long, erect, thick dark-brown seta ventrally. Antennomere III with white pubescence basally and ventrally, and brownish pubescence not obscuring integument on remaining surface; with a few coarse, decumbent white setae interspersed on posterior half; with long, erect, thick dark-brown setae ventrally, one of them white on apical third. Antennomere IV slightly arched; with white pubescence not obscuring integument basally, on sides of basal half, and on ventral surface of basal half; area between middle and apical third with brownish pubescence not obscuring integument; apical half with abundant dark-brown pubescence not obscuring integument, except ventral half of apical fifth with grayish-white pubescence; dorsal surface with short, erect yellowish-white setae interspersed; ventral surface with long, erect, thick dark-brown setae interspersed. Light area of antennomeres V–X with abundant white pubescence not obscuring integument, dark area with abundant dark-brown pubescence not obscuring integument; dorsal surface with short, erect yellowish-white setae interspersed; ventral surface with one long, erect dark-brown seta on dark area. Antennomere XI straight (Fig. 17); with white pubescence on basal and apical third and brown pubescence on central third; with moderately long yellowish-white setae directed backward interspersed on posterior third.

Antennal formula (ratio) based on length of antennomere III:

– Scape = 1.28. – Pedicel = 0.28. – IV = 2.16. – V = 0.96. – VI = 0.88. – VII = 0.80. – VIII = 0.76. – IX = 0.72. – X = 0.72. – XI = 0.68.

Thorax. – Prothorax wider than long; sides slightly divergent from anterolateral angles to lateral tubercle, then slightly convergent toward posterolateral angles; lateral tubercle conical, moderately large, located on posterior third. Pronotum densely, coarsely punctate; with three slightly elevated tubercles, two subcircular with rounded apex, each located on side of anterior third, another less elevated, located on center of middle; anterolateral tubercles with abundant blackish pubescence partially obscuring integument; anterocentral quarter with light-brown pubescent band, with brown pubescence close to its sides, together forming a triangular macula; posterocentral half with light-brown pubescent band, widened close to posterior margin; sides of posterior half with longitudinal, irregular, light-brown pubescent band, less distinct and slightly darker than central one, partially transversely fused with central band; posterior quarter with blackish pubescence not obscuring integument between light-brown pubescent bands; with white pubescence surrounding anterolateral tubercles, white pubescence absent close to posterior margin of tubercles; sides of anterior third with both dark-brown and white pubescence not obscuring integument; area close to sides of prothorax with abundant white pubescence not obscuring integument; remaining surface with dark-brown pubescence not obscuring integument; anterior quarter with a few long, decumbent, thick white setae interspersed; with a few long, erect setae interspersed, setae blackish on their basal half, whitish on their apical half. Sides of prothorax abundantly, coarsely punctate; with dark-brown pubescence not obscuring integument, with abundant, short, decumbent white setae interspersed, and a few long, decumbent, thick white setae interspersed. Prosternum moderately abundantly, coarsely punctate, except subsmooth area close to anterior margin; with abundant white pubescence not obscuring integument,



Fig. 6-11. *Strangalia flavocincta* (Thomson, 1861).

6-9. ♀, Brazil, Espírito Santo, Córrego do Itá. 6-8. Habitus. 6. Dorsal. 7. Lateral. 8. Ventral. 9. Pronotum.

10-11. *Ophistomis latifasciata* Melzer, 1926, holotype ♀ (= *Strangalia flavocincta*), habitus. 10. Dorsal. 11. Ventral.

except almost glabrous area close to anterior margin. Prosternal process with sculpturing and pubescence as on posterior region of prosternum; narrowest area 0.32 times procoxal width. Central area of mesoventrite with sparse grayish-white pubescence and moderately long, decumbent setae of same color interspersed; sides with abundant white pubescence not obscuring integument. Mesanepisternum, mesepimeron, and metanepisternum with moderately abundant white pubescence not obscuring integument, and sparse, moderately long, decumbent white setae interspersed. Metaventrite abundantly, coarsely punctate, except smooth metathoracic discrimen; with moderately abundant white pubescence laterally, pubescence gradually sparser centrally, except glabrous metathoracic discrimen; with long, decumbent, moderately thick white setae interspersed. Scutellum with dense light-brown pubescence, except glabrous sides of anterior half. **Elytra.** Moderately, sparsely, coarsely punctate on anterior third, punctures gradually finer toward apex; with abundant brown pubescence basally; two longitudinal, fragmented, slightly conspicuous brown pubescent bands dorsally, from basal brown pubescence to near apex; dashed light-brown band close to suture with light-brown pubescence not obscuring integument; light posterior area with abundant yellowish-brown pubescence not obscuring integument; remaining surface with dark-brown pubescence and abundant, irregular, white pubescent maculae interspersed; with long, suberect, thick black setae interspersed throughout, most of lateral ones whitish on their apical region.

Legs. – Coxae and trochanters with abundant white pubescence not obscuring integument; mesotrochanters not projected apically (Fig. 15). Femora with white pubescence not obscuring integument, except outer side mostly with dark-brown pubescence and apical quarter of dorsal surface with dark-brown pubescence and white pubescence interspersed; with sparse, thick, decumbent white setae interspersed. Protibiae with sparse dark-brown pubescence dorsally, white pubescence laterally, denser on outer surface, with dense, bristly dark-brown pubescence on posterior half of ventral surface; with long, erect setae interspersed, especially dorsally, setae dark brown on basal half, white on apical half. Meso- and metatibiae with sparse white pubescence on basal third, except dorsal surface and part of sides with dark-brown pubescence not obscuring integument; remaining surface of mesotibiae with sparse dark-brown setae laterally, abundant, bristly dark-brown setae ventrally, and abundant, erect blackish setae dorsally; remaining surface of metatibiae with pubescence and setae as on mesotibiae but distinctly sparser, meso- and metatibiae with moderately long, thick, decumbent white setae interspersed dorsally and laterally, and long, erect setae interspersed, most erect setae blackish with white apex. Dorsal surface of tarsomeres with abundant white pubescence not obscuring integument; metatarsomere I shorter than II–III together.

Abdomen. – Ventrite 1 somewhat sparsely, coarsely punctate; ventrites 2–5 sparsely, finely punctate; ventrite 5 with narrow, longitudinal sulcus on basal third and depressed on posterocentral region; ventrites 1–4 with whitish pubescence, sparser centrally, denser laterally, with moderately long, decumbent white setae interspersed; ventrite 5 mostly with sparse brownish pubescence, with white pubescence interspersed basally, moderately long, decumbent, thick white setae interspersed on basal 2/3, and long dark-brown setae interspersed laterally and on apical third.

Male (Fig. 18-21). Similar to female, differing as follows: apex of mesotrochanters distinctly projected apically (Fig. 18); abdominal ventrite 5 not sulcate anterocentrally and not depressed posterocentrally; and abdominal ventrite 5 distinctly shorter than 2–4 together (longer in female).

Dimensions (mm) (holotype ♀ / paratype ♂)

- Total length, 5.50/4.80;
- Prothoracic length, 1.00/0.90;
- Anterior prothoracic width, 1.20/1.05;
- Posterior prothoracic width, 1.25/1.10;
- Maximum prothoracic width, 1.50/1.30;
- Humeral width, 1.90/1.65;
- Elytral length, 3.80/3.25.

Etymology. – The name “*grisea*” (Latin, meaning grey) refers to the overall greyish appearance of this species.

Remarks. – *Atimiola grisea* sp. nov. differs from *A. guttulata* Bates, 1880 (Fig. 30-34) as follows: integument mostly black; pubescence on frons sparser and mostly dark (Fig. 16); pubescence on abdominal ventrites sparser (Fig. 14); and femoral pubescence sparser throughout and mostly dark on outer surface (Fig. 13). In *A. guttulata*, the integument is mostly brown, pubescence on frons denser and mostly yellowish white (Fig. 33), pubescence on abdominal ventrites denser (Fig. 31), and femoral pubescence denser throughout and whitish on outer surface (Fig. 31-32). It differs from *A. inflaticornis* by the scape proportionally longer and slender (shorter and stouter in *A. inflaticornis*), pronotal punctures fine (coarser in *A. inflaticornis*), anterior half of elytra without brownish macula dorsolaterally (present in *A. inflaticornis*), posterior third of elytra mostly black (mostly brownish in *A. inflaticornis*), mesoventral process (Fig. 14, 21) proportionally narrower (proportionally wider (Fig. 24, 29) in *A. inflaticornis*), and mesotibiae narrower, especially apically (Fig. 14, 21) (wider, especially apically (Fig. 24, 29) in *A. inflaticornis*). The arched antennomere XI in the paratype male (Fig. 19) is possibly ill-formed and not a normal characteristic of males of this species.

***Atimiola inflaticornis* sp. nov.**

(Fig. 22-29)

ZooBank: <http://zoobank.org/B28ABE77-CFA5-4C9A-B29C-22DB03D45D61>

Holotype. ♂ (Fig. 22-27), ECUADOR, *Napo*: Wawa Sumaco 1400 m, 29.IX.2021, J. Vlasak leg. (MZSP).

Paratypes

– 2 ♀, same data as holotype (JVCO).

– 1 ♂ & 1 ♀, ECUADOR, *Napo*: Pacto Sumaco 1500 m, 23.XI.2022, J. Vlasak leg. (JVCO).

Description

Coloration. – Head capsule dark brown with some areas blackish, except ventral surface brown anteriorly, gradually lighter toward posterior region; ventral mouthparts brown; anteclypeus brown with irregular dark-brown areas; labrum brown on posterior 3/4, yellowish on anterior quarter; scape dark brown except light-brown apex; pedicel mostly brown; antennomeres III–IV brown, slightly lighter basally, except orangish-brown apex; antennomeres V–XI orangish brown basally and apically, brown on remaining surface. Pronotum blackish on wide central area, this area projected toward posterior margin on sides of posterior quarter, and slightly projected backward centrally, brown on remaining surface. Sides of prothorax blackish on wide central area, brown close to anterior margin, dark brown close to posterior margin. Prosternum dark brown except brown area close to anterior margin and procoxal cavities. Prosternal process brown on basal third and margins of posterior 2/3, blackish on remaining surface. Mesoventrite blackish centrally, dark brown laterally, brown close to mesocoxal cavities. Mesoventral process blackish except brown sides and apex. Mesanepisternum, mesepimeron, and metanepisternum blackish. Metaventrite black except narrow brown area close to anterior margin and brown apical area. Scutellum brown except black sides of basal 2/3. Elytra black except: wide, longitudinal light-brown band dorsally on anterior sixth close to scutellum; humerus light-brown; irregular, transverse orangish-brown band on apex of dorsal anterior sixth; moderately large C-shaped orangish-brown macula laterally on anterior third; suture orangish brown between anterior and posterior quarters; posterior quarter light orangish brown, except irregular oblique blackish band dorsally. Trochanters light brown. Femora dark brown except light brown narrow basal area, apical third of dorsal surface of pro- and mesofemora, and most dorsal surface of metafemora. Tibiae dark brown basally, gradually orangish brown toward apex. Tarsi light orangish brown. Abdominal ventrite 1 brown basally, black on remaining surface; ventrites 2–4 black, except brown narrow apex of 3–4; ventrite 5 brown except orangish-brown apex.

Head. – Frons moderately abundantly, coarsely punctate, with minute punctures interspersed; with abundant dark-brown pubescence not obscuring integument, with a few short, decumbent white setae interspersed laterally close to clypeus, a few long, decumbent, thick white setae interspersed laterally,

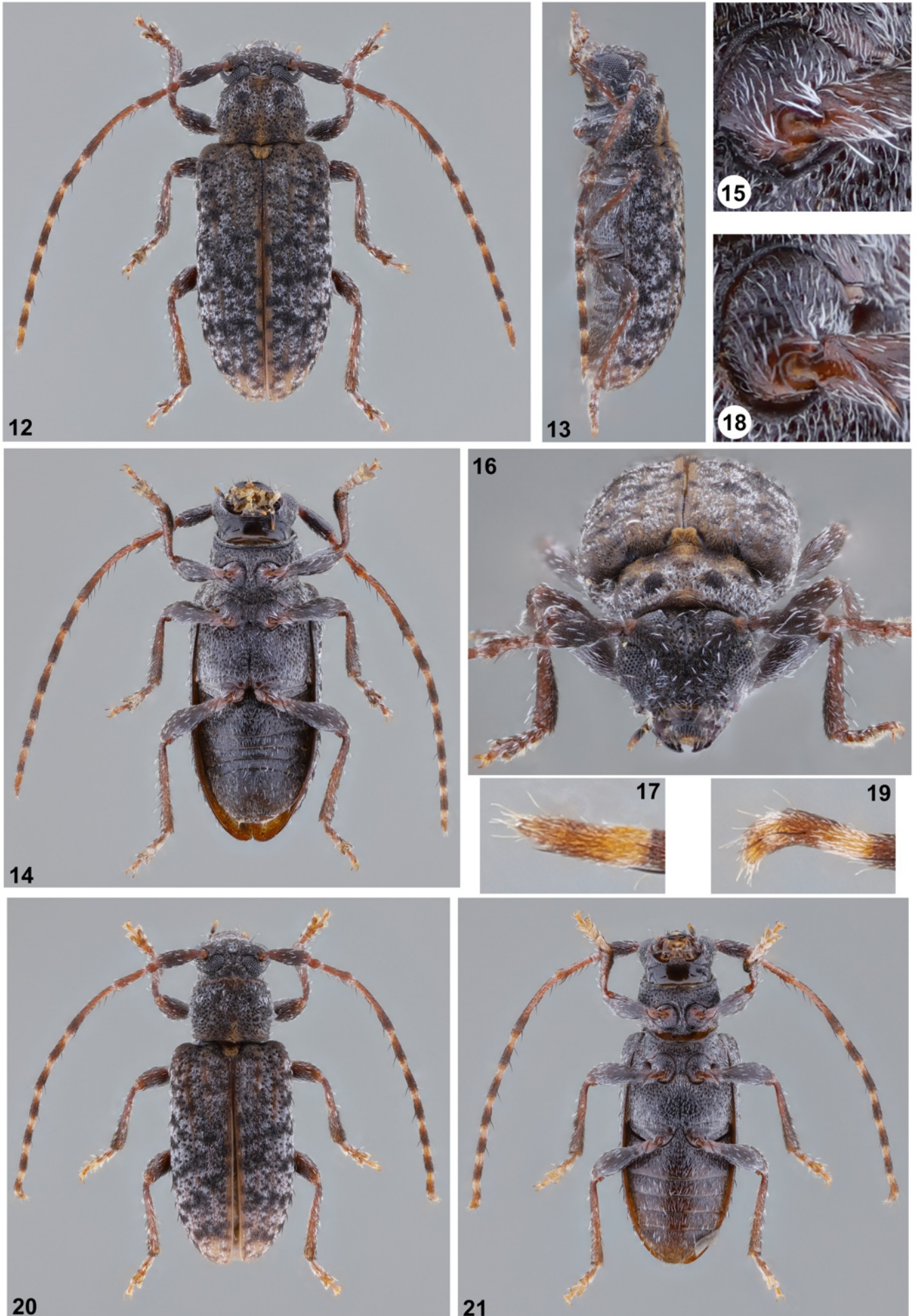


Fig. 12-21. *Atimiola grisea* sp. nov.

12-17. Holotype ♀. 12-14. Habitus. 12. Dorsal. 13. Lateral. 14. Ventral. 15. Mesotrochanter. 16. Head, frontal view. 17. Antennomere XI. 18-21. Paratype ♂. 18. Mesotrochanter. 19. Antennomere XI. 20-21. Habitus. 20. Dorsal. 21. Ventral.

and one long, erect seta close to eyes, setae blackish on their base, gradually yellowish white toward their apex. Vertex coarsely punctate, punctures coarse, partially confluent laterally, sparser and finer centrally; with abundant dark-brown pubescence not obscuring integument, except denser brown pubescence centrally between antennal tubercles and upper eye lobes. Antennal tubercles abundantly, moderately coarsely punctate; with abundant dark-brown pubescence not obscuring integument, with a few long, decumbent, thick white setae interspersed. Area between antennae and eyes with abundant white pubescence. Area behind eyes with moderately abundant white pubescence not obscuring integument and a few long, decumbent, thick white setae interspersed behind lower eye lobes. Genae with moderately abundant white pubescence not obscuring integument. Wide central area of postclypeus with moderately sparse, both dark-brown and white pubescence not obscuring integument close to frons, moderately abundant, moderately short, both white and brownish setae directed forward, and long, erect setae interspersed, erect setae black on their basal region, gradually paler toward their apex. Side of postclypeus almost glabrous. Labrum almost smooth, glabrous close to anteclypeus; wide central area moderately abundantly and finely punctate, with moderately abundant, both white and brownish pubescence not obscuring integument, and long, erect setae directed forward laterally, erect setae brownish on their basal region, gradually whitish or yellowish toward their apex; anterior region glabrous, except dense fringe of yellow setae on anterior margin. Gula almost smooth, glabrous. Distance between upper eye lobes 0.26 times distance between outer margins of eyes; distance between lower eye lobes 0.55 times distance between outer margins of eyes. Antennae 1.65 times elytral length, reaching elytral apex near apex of antennomere IX. Scape subpiriform; densely, finely punctate; with dark-brown pubescence dorsally and laterally, not obscuring integument, except reddish-brown pubescence on apex, with a few long, decumbent, thick white setae interspersed, and abundant white pubescence not obscuring integument ventrally, with a few long, decumbent yellowish setae interspersed on posterior third. Pedicel with sparse yellowish-brown pubescence dorsally and laterally and abundant white pubescence not obscuring integument ventrally; with one long, erect seta ventrally, dark brown on its basal third, gradually yellowish white toward its apex. Antennomeres III–IV with moderately sparse yellowish pubescence basally and apically on dorsal and lateral surfaces, brownish on remaining dorsal and lateral surface, and white pubescence not obscuring integument ventrally, white pubescence slightly denser basally and apically; with a few long, decumbent, thick white setae interspersed on outer surface; with long, erect setae ventrally, setae blackish on their basal 2/3, pale on their apical third; antennomere IV arched. Antennomeres V–XI with abundant white pubescence basally and apically and brownish on remaining surface; V–X with long, erect setae ventrally, setae sparser toward X, blackish on their basal 2/3, pale on their apical third; dorsal apex of V–X with moderately long, erect yellowish-white setae apically; XI with abundant yellowish-white setae interspersed on apical third.

Antennal formula (ratio) based on length of antennomere III:

– Scape = 1.00 – Pedicel = 0.22 – IV = 1.33 – V = 0.67 – VI = 0.61 – VII = 0.61 – VIII = 0.55 – IX = 0.50 – X = 0.45 – XI = 0.53.

Thorax. – Prothorax wider than long; anterior constriction well marked; sides slightly divergent from anterior constriction to lateral tubercles, then subparallel-sided toward posterolateral angles; lateral tubercles moderately large, conical, located slightly after middle. Pronotum with five moderately elevated

tubercles, one large, somewhat irregular and flattened dorsally, located on each side of anterior third, fused by transverse carina less elevated than the tubercles, one on each side slightly after middle, rounded apically, farther apart than the anterolateral tubercles, slightly fused with the anterolateral tubercles by wide, oblique, slightly elevated area, another centrally, subelliptical, located from slightly before middle to posterior third, extended toward anterior constriction by narrow, longitudinal, slightly elevated carina; abundantly, coarsely punctate except smooth apex of posterolateral tubercles, posterior region of central tubercle with finer punctures, anterior half of central tubercle abundantly, minutely punctate, and posterocentral region with sparser, finer, shallower punctures; center of anterior quarter with longitudinal brownish pubescent band; posterocentral quarter with triangular brownish macula, except yellowish-white pubescence on center of its posterior half; remaining brown area close to anterior margin with moderately sparse brown pubescence; area close to posterior half of sides of central tubercle with abundant brown pubescence not obscuring integument, this pubescent area distinctly widened toward its outer region; area close to sides of prothorax with abundant brown pubescence not obscuring integument, except irregular, small white pubescent macula before middle, dorsal surface of lateral tubercles of prothorax with abundant white pubescence, and white pubescence interspersed close to anterior constriction; remaining surface with dark-brown pubescence not obscuring integument; with a few moderately long, decumbent, thick white setae interspersed on anterior third and one on each side of center of posterior margin. Sides of prothorax abundantly, coarsely punctate; with white pubescence not obscuring integument, pubescence denser toward prosternum. Prosternum moderately abundantly, coarsely punctate except sparsely, finely punctate anteroventral region; with abundant white pubescence not obscuring integument, pubescence slightly denser laterally, except sparser white pubescence on finely punctate region. Prosternal process coarsely punctate centrally, punctures denser on posterior half; with abundant white pubescence not obscuring integument; narrowest area 0.27 times procoxal width. Central area of mesoventrite with moderately abundant white pubescence not obscuring integument on its center, pubescence distinctly sparser on its sides; area close to mesocoxal cavities with abundant white pubescence. Mesanepisternum, mesepimeron, and metanepisternum with abundant white pubescence, pubescence denser on metanepisternum. Mesoventral process with abundant white pubescence not obscuring integument, except glabrous lateral margins and center of posterior half; apex distinctly emarginate centrally, 0.65 times mesocoxal width. Sides of metaventrite abundantly, coarsely punctate, with abundant white pubescence, pubescence denser close to metanepisternum; central region subsmooth, with moderately sparse white pubescence. Scutellum with dense yellowish-brown pubescence except dark-brown pubescence on sides of anterior half.

Elytra. – Moderately sparsely, coarsely punctate on anterior third, punctures gradually finer and sparser toward apex; with three very coarse and deep punctures (Fig. 26) close to anterior margin; light-brown areas with abundant brownish pubescence not obscuring integument; orangish-brown areas with abundant yellowish-brown pubescence partially obscuring integument, except area close to apex with abundant yellowish-white pubescence partially obscuring integument; sutural region on posterior quarter with dashed white pubescent band; sides of anterior fifth of dorsal surface with brown pubescence close to light-brown area, dark brown toward sides; remaining black

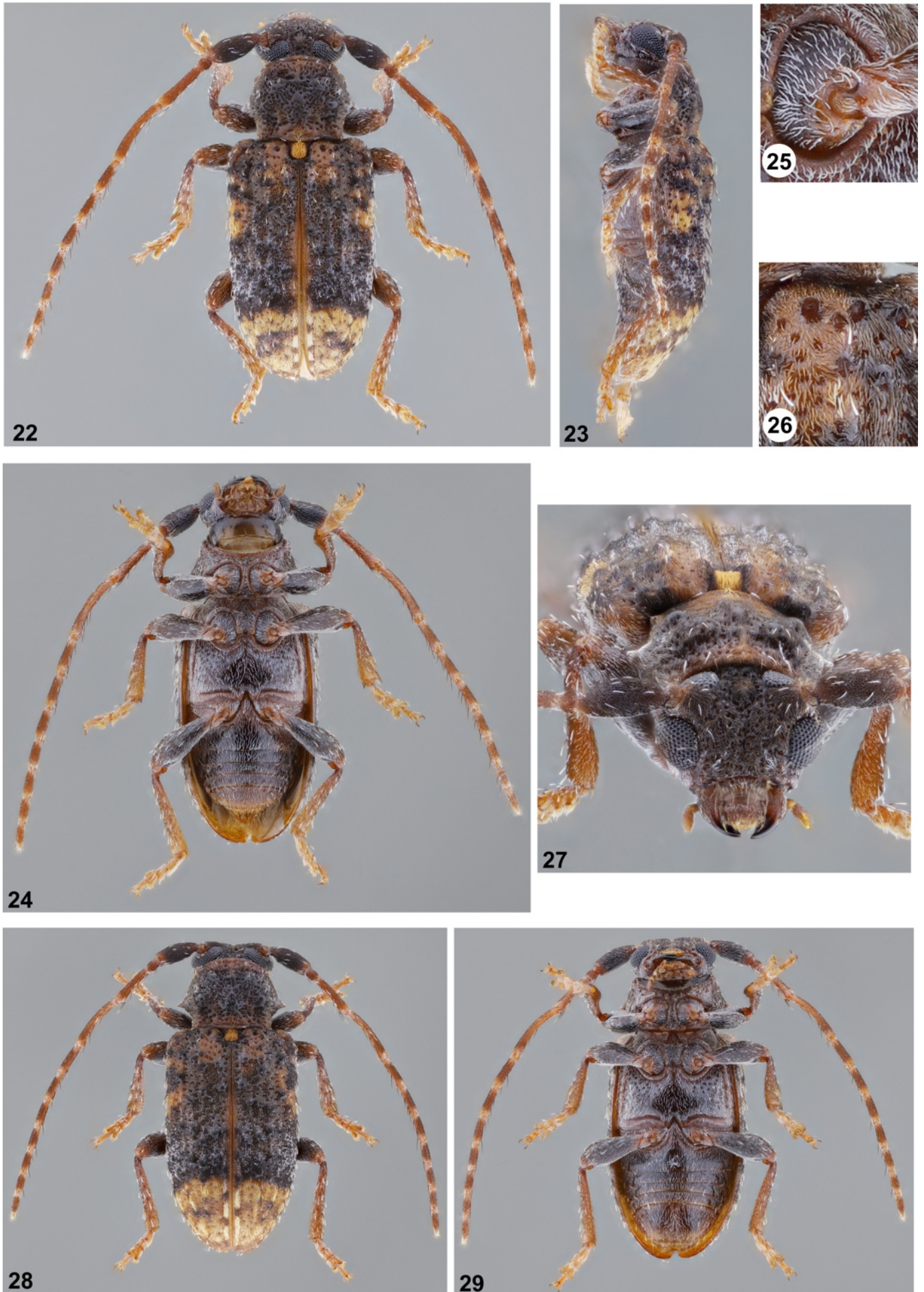


Fig. 22-29. *Atimiola inflaticornis* sp. nov.

22-27. Holotype ♂. 22-24. Habitus 22. Dorsal. 23. Lateral. 24. Ventral. 25. Mesotrochanter. 26. Basal punctures on the elytra. 27. Head, frontal view. 28-29. Paratype ♀, habitus. 28. Dorsal. 29. Ventral.

dorsal surface with abundant, both white and dark-brown pubescence not obscuring integument, except area close to light apical region and on oblique blackish band on posterior quarter with only dark-brown pubescence; sides with abundant white pubescence not obscuring integument; with long, erect, thick setae interspersed throughout, setae black about their basal 2/3, yellowish-white or white on their apical third, some of them spatulate apically.

Legs. – Coxae and trochanters with abundant white pubescence not obscuring integument; mesotrochanter (Fig. 25) not projected apically. Femora with abundant white pubescence not obscuring integument on dorsal surface and most of inner surface, dense white pubescence ventrally; outer surface of profemora with sparse white pubescence; outer surface of mesofemora with moderately abundant brown pubescence not obscuring integument and white pubescence interspersed; outer surface of metafemora with moderately abundant white pubescence not obscuring integument and brown pubescence interspersed on posterior half; with sparse, decumbent, thick white setae interspersed dorsally and laterally. Tibiae distinctly and gradually widened from base to apex. Protibiae with moderately abundant brown pubescence basally and white pubescence on remaining dorsal and lateral surfaces; posterior half of ventral surface with dense, bristly yellowish-brown pubescence; with long, erect or suberect, thick white setae interspersed dorsally and laterally. Mesotibiae with dark-brown pubescence basally, moderately abundant white pubescence not obscuring integument dorsally and on inner surface, moderately abundant yellowish pubescence not obscuring integument on outer surface, with white pubescence interspersed; apical third of ventral surface with abundant, bristly yellowish-brown pubescence; apical third with dorsal surface with two dense, erect tuft with dark yellowish-brown setae, one close to base of dorsal sulcus, another between apex of dorsal sulcus and apex of tibiae; with long, erect setae interspersed on sides of posterior 2/3, setae black on their basal third, whitish on their apical 2/3; with long, suberect, thick white setae interspersed dorsally and laterally. Metatibiae with sparse white pubescence on basal half, slightly more abundant on basal half of ventral surface, and sparse, both white and yellowish pubescence on posterior half of dorsal and lateral surfaces; posterior third of ventral surface with bristly yellowish-brown pubescence; dorsal and lateral surfaces with long, erect setae interspersed, setae slender and blackish on their basal third, white and spatulate on their apical 2/3; posterior third of dorsal surface with short, erect yellowish-brown setae, some setae distinctly thick; posterior third of lateral surfaces with sparse, thick yellowish-brown setae interspersed. Tarsomeres with abundant white pubescence not obscuring integument; tarsomeres I–II with long, erect setae interspersed, setae slender and blackish on their basal third, white and spatulate on their apical 2/3; metatarsomere I slightly shorter than II–III together.

Abdomen. – Ventrites with moderately abundant white pubescence not obscuring integument, pubescence slightly denser laterally; with long, erect setae interspersed, setae slender and blackish on their basal third, white and spatulate on their apical 2/3; apical margin of ventrite 5 uniformly rounded.

Female (Fig. 28-29). Similar to male, differing as follows: prothorax slightly wider; abdominal ventrite 5 slightly sulcate on center of basal third; posterior region of ventrite 5 depressed; apex of ventrite 5 truncate.

Dimensions (mm) (holotype ♂ / paratype ♂ / paratypes ♀)

- Total length, 5.35/5.15/5.10–5.75;
- Prothoracic length, 1.20/1.40/1.15–1.55;
- Anterior prothoracic width, 1.15/1.20/1.20–1.45;
- Posterior prothoracic width, 1.25/1.35/1.30–1.55;
- Maximum prothoracic width, 1.70/1.80/1.75–2.10;
- Humeral width, 2.00/2.25/2.05–2.45;
- Elytral length, 3.50/3.35/3.55–3.90.

Etymology. – The name “*inflaticornis*” (from Latin *inflatus* (inflated or swollen) and *cornis* (horned), referring to antennae) indicates the swollen scape of this species.

Remarks. – *Atimiola inflaticornis* sp. nov. differs from *A. guttulata* Bates, 1880 (Fig. 30-34) as follows: scape subpiriform in both sexes (Fig. 22, 28); pronotal tubercle more distinct (Fig. 27); elytra with yellowish-brown areas (Fig. 22, 28); most erect elytral setae whitish apically (Fig. 23); and elytral base with very coarse punctures (Fig. 26). In *A. guttulata*, the scape is subcylindrical in both sexes (Fig. 30), pronotal tubercles slightly distinct (Fig. 33), elytra without yellowish-brown areas (Fig. 30), erect elytral setae not whitish apically (Fig. 34), and the elytral base without very coarse punctures contrasting with the others (Fig. 30). See remarks in *Atimiola grisea* sp. nov.

HEMILOPHINI Thomson, 1868

Phoebe Audinet-Serville, 1835

Phoebe albaria (Bates, 1872)

(Fig. 35)

Amphionycha albaria Bates, 1872: 230.

Remarks. – This species was described based on a single male from Nicaragua. Bates (1885) added Costa Rica, Martins & Galileo (1998) listed Colombia (Magdalena), Galileo & Martins (1999) reported the species from another Colombian department, Valle del Cauca, Martins & Galileo (2004) added two more Colombian departments (Cundinamarca and Tolima), and Maes *et al.* (2010) listed the species as present in Panama.

Material examined. – ECUADOR (new country record), Pichincha: Nanegal, 1300 m, 2 ♂, 26.IX.2021, J. Vlasak leg. (JVCO).

PARANDRINAE Blanchard, 1845

PARANDRINI Blanchard, 1845

Acutandra Santos-Silva, 2002

Acutandra ubitiara (Santos-Silva & Martins, 2000)

(Fig. 36)

Parandra (*Parandra*) *ubitiara* Santos-Silva & Martins, 2000: 167.

Remarks. – This species was described based on two males from Colombia (Valle del Cauca). Cardona-Duque *et al.* (2010) examined males and females from the departments of Valle del Cauca, Cauca, and Chocó (Bezark 2023; Monné 2023; Tavakilian & Chevillotte 2022). We now examine a male from Costa Rica, which constitutes the first record of the genus for Central America.

Material examined. – COSTA RICA (new country record), San José: Braulio Carrillo [National Park], 1 ♂, adult under bark, 30.XII.2014, J. Vlasak leg. (JVCO).

Acknowledgments

We express our sincere gratitude to Steven W. Lingafelter for reviewing this work.

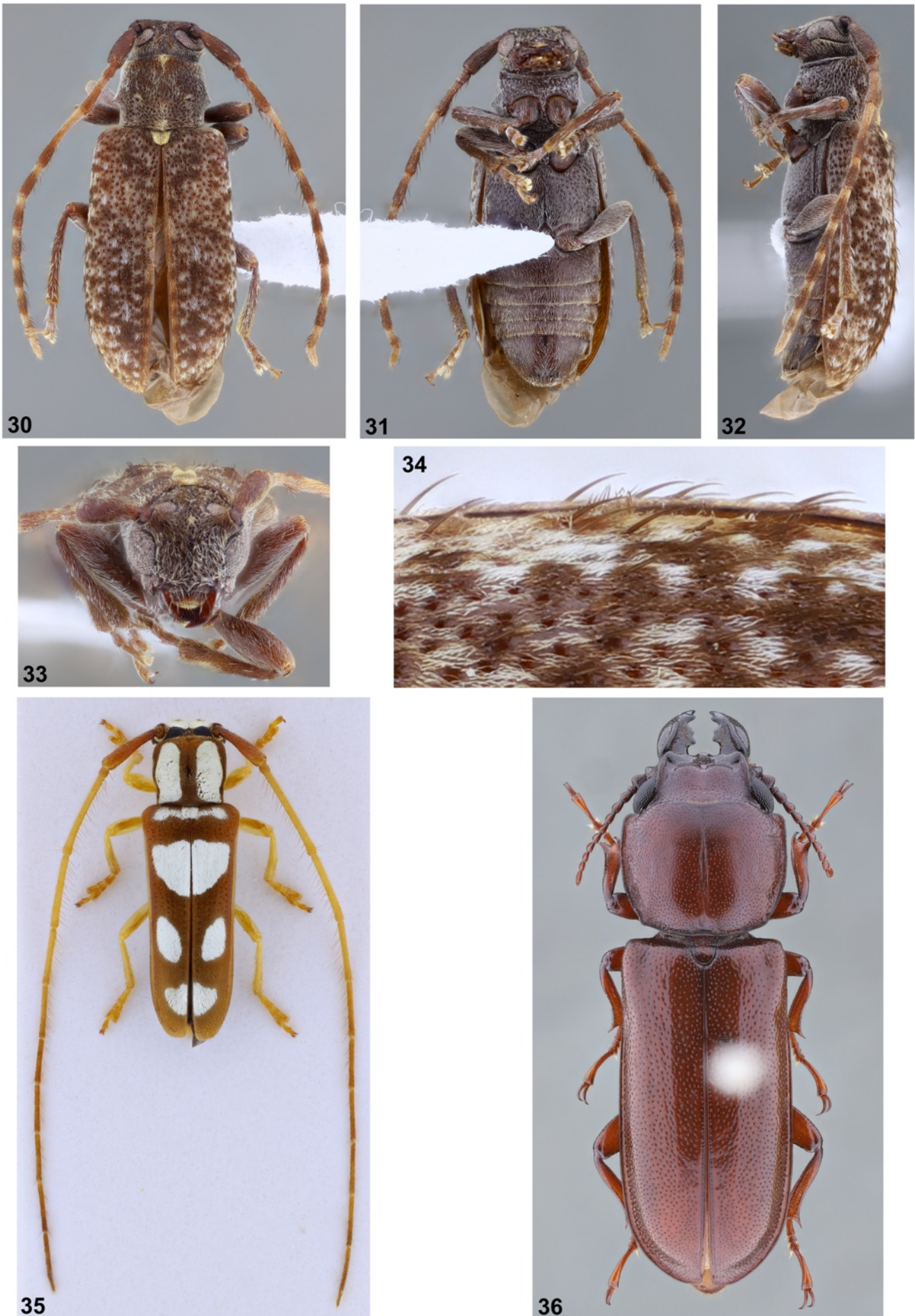


Fig. 30-36. Cerambycidae spp.

30-34. *Atimiola guttulata* Bates, 1880, ♀, Costa Rica, Guanacaste. **30-32.** Habitus. **30.** Dorsal. **31.** Ventral. **32.** Lateral. **33.** Head, frontal view. **34.** Erect elytral setae. **35.** *Phoebe albaria* (Bates, 1872), ♂, Ecuador, dorsal habitus. **36.** *Acutandra ubitiara* (Santos-Silva & Martins, 2000), ♂, Costa Rica, dorsal habitus.

References

- Bates H.W., 1872. – On the longicorn Coleoptera of Chontales, Nicaragua. *The Transactions of the Entomological Society of London*, 1872: 163-238.
- Bates H.W., 1885. – Supplement. In: F.D. Godman and O. Salvin (Eds.), *Biologia Centrali-Americana, Insecta, Coleoptera*. Vol. 5. Taylor and Francis, London, pp. 249-436.
- Bezark L.G., 2023. – Checklist of the Oxypeltidae, Vesperidae, Disteniidae and Cerambycidae (Coleoptera) of the Western Hemisphere. 2023 Edition (updated through 31 December 2022). Available from <http://bezbycids.com/byciddb/wdefault.asp?w=n> (Last accessed 1 May 2023.)
- Cardona-Duque J.C., Santos-Silva A. & Wolff M., 2010. – Parandrinae (Coleoptera, Cerambycidae) de Colombia. *Revista Colombiana de Entomologia*, 36(1): 135-157.
- Galileo M.H.M. & Martins U.R., 1999. – Sobre alguns Lamiinae (Coleoptera, Cerambycidae) com garras tarsais apendiculadas e bifidas. *Papéis Avulsos de Zoologia*, 41(7): 105-118.
- Maes J.-M., Berghe E., Dauber D., Audureau A., Nearn E., Skilman F., Heffern D. & Monné M.A., 2010. – Catalogo ilustrado de los Cerambycidae (Coleoptera) de Nicaragua. Parte IV - Lamiinae- Disteniinae. *Revista Nicaraguense de Entomologia*, 70 (Suplemento 1-4): 1-879.
- Martins U.R. & Galileo M.H.M., 1998. – Gêneros de Hemilophini (Coleoptera, Cerambycidae) semelhantes a *Phoebe* Audinet-Serville, 1835. *Revista Brasileira de Entomologia*, 41(2-4): 431-437.
- Martins U.R. & Galileo M.H.M., 2004. – Contribuição aos Hemilophini (Cerambycidae, Lamiinae) da Colômbia e do Equador. *Iheringia, Zoologia*, 94(1): 37-44.
- Monné M.A., 2023. – *Catalogue of the Cerambycidae (Coleoptera) of the Neotropical region. Part III. Subfamilies Lepturinae, Nedyalinae, Parandrinae, Prioninae, SPondylidinae and Families Oxypeltidae, Vesperidae and Disteniidae*. Available from: <https://cerambycids.com/catalog/> (Last accessed 3 May 2023.)
- Santos-Silva A. & Martins U.R., 2000. – Nova espécie de Parandrinae (Coleoptera, Cerambycidae) da região neotropical. *Revista Brasileira de Entomologia*, 44(3-4): 167-170.
- Tavakilian G.L. & Chevillotte H., 2022. – Titan: base de données internationales sur les Cerambycidae ou Longicornes. Available from: <http://titan.gbif.fr/> (Last accessed 3 May 2023.)

Author contributions ¹

Project initiator. – JV & AS
Scientific coordinator. – JV & AS
Publisher Correspondence. – JV
Writing the article. – AS & JV
Article proofreading. – JV & AS
Bibliographic work. – AS
Material study. – AS & JV
Author of the figures. – AS
Collectors. – JV

¹ JV = Josef Vlasak - AS = Antonio Santos-Silva

Résumé

Vlasak J. & Santos-Silva A., 2023. – Cerambycidae (Coleoptera) d'Équateur et d'Amérique centrale: nouvelles espèces et nouvelles données. *Faunitaxys*, 11(40): 1 – 12.

Three new species are described from Ecuador: *Strangalia tricolor* **sp. nov.** (Lepturinae, Lepturini); *Atimiola grisea* **sp. nov.** and *A. inflaticornis* **sp. nov.** (Lamiinae, Desmiphorini). New country records are provided: *Acutandra ubitiara* (Santos-Silva & Martins, 2000) (Parandrinae, Parandrini) from Costa Rica; *Phoebe albaria* (Bates, 1872) (Lamiinae, Hemilophini) from Ecuador.

Mots-clés. – Coleoptera, Cerambycidae, espèces nouvelles, taxonomie, descriptions, Amérique centrale, Région néotropicale, Amérique du Sud.

Derniers articles publiés

Moretto P. & Deschamps P., 2023. – Révision des *Scarabaeus* (*Scarabaeus*) du groupe *gangeticus* (Castelnau, 1840). Nouveaux statuts et nouvelles espèces (Coleoptera, Scarabaeidae, Scarabaeini). *Faunitaxys*, 11(14): 1 – 27. [https://doi.org/10.57800/faunitaxys-11\(14\)](https://doi.org/10.57800/faunitaxys-11(14))

Reichenbach A. & Keith D., 2023. – Description of a new species of *Psilopholis* Brenske (Scarabaeidae, Melolonthinae, Melolonthini) from Vietnam along with some remarks on the genus. *Faunitaxys*, 11(15) : 1 – 5. [https://doi.org/10.57800/faunitaxys-11\(15\)](https://doi.org/10.57800/faunitaxys-11(15))

Degallier N., Tishechkin A. K. & Kovarik P. W., 2023. – Données faunistiques nouvelles sur les espèces du genre *Degallierister* Gomy, 2001 (Coleoptera, Histeridae, Dendrophilinae). *Faunitaxys*, 11(16): 1 – 11. [https://doi.org/10.57800/faunitaxys-11\(16\)](https://doi.org/10.57800/faunitaxys-11(16))

Háva J., 2023. – A new *Pleuroceratos* species (Coleoptera: Phloeostichidae) from Cretaceous Burmese amber. *Faunitaxys*, 11(17): 1 – 3. [https://doi.org/10.57800/faunitaxys-11\(17\)](https://doi.org/10.57800/faunitaxys-11(17))

Bate R. & Bate M. D., 2023. – A new species of *Afroeme* from South Africa (Coleoptera: Cerambycidae: Xystrocerini). *Faunitaxys*, 11(18): 1 – 3. [https://doi.org/10.57800/faunitaxys-11\(18\)](https://doi.org/10.57800/faunitaxys-11(18))

Háva J. & Herrmann A., 2023. – New faunistic records and remarks on Dermestidae (Coleoptera) - Part 24. *Faunitaxys*, 11(19): 1 – 3. [https://doi.org/10.57800/faunitaxys-11\(19\)](https://doi.org/10.57800/faunitaxys-11(19))

Hennemann F. H., Damastra G.B., Damaledo D.M., Cumming R.T. & Le Tirant S., 2023. – *Nesiophasma sobesonbaii* **n. sp.** – a new giant stick insect from the island of Timor, Indonesia (Insecta: Phasmatodea). *Faunitaxys*, 11(20): 1 – 13. [https://doi.org/10.57800/faunitaxys-11\(20\)](https://doi.org/10.57800/faunitaxys-11(20))

Ratcliffe B.C. & Le Tirant S., 2023. – Description of a new species of *Stenocrates* Burmeister (Coleoptera: Scarabaeidae: Dynastinae: Cyclocephalini) from Peru and a revised catalog of the species of *Stenocrates*. *Faunitaxys*, 11(21): 1 – 5. [https://doi.org/10.57800/faunitaxys-11\(21\)](https://doi.org/10.57800/faunitaxys-11(21))

- Ythier E. & Lourenço W. R., 2023. – A new species of *Buthiscus* Birula, 1905 (Scorpiones: Buthidae) from the Adrar des Ifoghas, Mali. *Faunitaxys*, 11(22): 1 – 7. [https://doi.org/10.57800/faunitaxys-11\(22\)](https://doi.org/10.57800/faunitaxys-11(22))
- Ythier E., 2023. – A new species of *Opisthophthalmus* C. L. Koch, 1837 from Namibia (Scorpiones: Scorpionidae). *Faunitaxys*, 11(23): 1 – 6. [https://doi.org/10.57800/faunitaxys-11\(23\)](https://doi.org/10.57800/faunitaxys-11(23))
- Hennemann F. H. & Le Tirant S., 2023. – Stick and Leaf Insects of Morotai Island, Indonesia (Phasmatodea). *Faunitaxys*, 11(24): 1 – 28. [https://doi.org/10.57800/faunitaxys-11\(24\)](https://doi.org/10.57800/faunitaxys-11(24))
- Lanuzza-Garay A., 2023. – A New Genus, New Species and New Country Records of Longhorned Beetles (Cerambycidae, Lamiinae) from Panama. *Faunitaxys*, 11(25): 1 – 5. [https://doi.org/10.57800/faunitaxys-11\(25\)](https://doi.org/10.57800/faunitaxys-11(25))
- Delaunay L. & Coache A., 2023. – Contribution à la connaissance de la biodiversité entomique africaine. III. – *Oedichirus georgesi* n. sp. de Sao Tomé & Principe (Coleoptera, Staphylinidae, Paederinae). *Faunitaxys*, 11(26): 1 – 7. [https://doi.org/10.57800/faunitaxys-11\(26\)](https://doi.org/10.57800/faunitaxys-11(26))
- Platia G. & Coache A., 2023. – Description of a new species of *Rismethus* Fleutiaux, 1947 from Republic of Benin with a key to the known African species (Coleoptera, Elateridae, Agrypnini). *Faunitaxys*, 11(27): 1 – 4. [https://doi.org/10.57800/faunitaxys-11\(27\)](https://doi.org/10.57800/faunitaxys-11(27))
- Santos-Silva A., Delahaye N. & Pirk J., 2023. – The mysterious *Aplagiognathus serratus* Thomson: a new synonym in Macrotomini (Coleoptera, Cerambycidae, Prioninae, Macrotomini). *Faunitaxys*, 11(28): 1 – 4. [https://doi.org/10.57800/faunitaxys-11\(28\)](https://doi.org/10.57800/faunitaxys-11(28))
- Vives E., 2023. – Especies nuevas o interesantes de longicórnios de Filipinas (Pars 27) (Coleoptera, Cerambycidae). *Faunitaxys*, 11(29) : 1 – 3. [https://doi.org/10.57800/faunitaxys-11\(29\)](https://doi.org/10.57800/faunitaxys-11(29))
- Coache A., Vitali F., Richard D. & Maquart P. O., 2023. – Description of a new species of *Calanthemis* Thomson, 1864 (Coleoptera: Cerambycidae) from Principe Island. *Faunitaxys*, 11(30): 1 – 3. [https://doi.org/10.57800/faunitaxys-11\(30\)](https://doi.org/10.57800/faunitaxys-11(30))
- Platia G. & Pulvirenti E., 2023. – New species and new records of click beetles of the genera *Girardelater* Schimmel, 1999, *Procrærus* Reitter, 1905 and *Xanthopenthes* Fleutiaux, 1928 from the Oriental Region (Coleoptera, Elateridae, Elaterini and Megapenthini). *Faunitaxys*, 11(31): 1 – 18. [https://doi.org/10.57800/faunitaxys-11\(31\)](https://doi.org/10.57800/faunitaxys-11(31))
- Háva J. & Coache A., 2023. – A contribution to knowledge of Mycetophagidae (Coleoptera) from Sao Tome and Principe. *Faunitaxys*, 11(32): 1 – 5. [https://doi.org/10.57800/faunitaxys-11\(32\)](https://doi.org/10.57800/faunitaxys-11(32))
- Devesa S. & Santos-Silva A., 2023. – On *Elaphidion tuberculicolle* Fisher, 1932 and *Elaphidion scaramuzzai* Fisher, 1951 (Coleoptera, Cerambycidae). *Faunitaxys*, 11(33): 1 – 7. [https://doi.org/10.57800/faunitaxys-11\(33\)](https://doi.org/10.57800/faunitaxys-11(33))
- Delahaye N., Marazzi G. & Marazzi V., 2023. – Quelques remarques sur le genre *Xixuthrus* Thomson, 1864 avec la description de deux nouvelles espèces (Coleoptera, Cerambycidae, Prioninae, Macrotomini, Xixuthrina). *Faunitaxys*, 11(34): 1 – 9. [https://doi.org/10.57800/faunitaxys-11\(34\)](https://doi.org/10.57800/faunitaxys-11(34))
- Lourenço W. R. & Velten J., 2023. – Confirmation of the validity of the genus *Cretaceousbuthus* Lourenço, 2022 and description of a new species from Burmite (Scorpiones: Buthoidea: Buthidae). *Faunitaxys*, 11(35): 1 – 6. [https://doi.org/10.57800/faunitaxys-11\(35\)](https://doi.org/10.57800/faunitaxys-11(35))
- Théry T., 2023. – Description of *Derolathrus foveiceps* n. sp. from Florida (Coleoptera: Jacobsoniidae). *Faunitaxys*, 11(36): 1 – 4. [https://doi.org/10.57800/faunitaxys-11\(36\)](https://doi.org/10.57800/faunitaxys-11(36))
- Bate R. & Bate M. D., 2023. – New synonymies and distribution records of some longhorn beetles (Coleoptera, Cerambycidae) occurring in South Africa. *Faunitaxys*, 11(37): 1 – 9. [https://doi.org/10.57800/faunitaxys-11\(37\)](https://doi.org/10.57800/faunitaxys-11(37))
- Háva J. & Coache A., 2023. – *Anthrenus (Anthrenodes) sarahae* sp. nov., a new species from Benin (Coleoptera: Dermestidae). *Faunitaxys*, 11(38): 1 – 3. [https://doi.org/10.57800/faunitaxys-11\(38\)](https://doi.org/10.57800/faunitaxys-11(38))
- Keith D. & Coache A., 2023. – Sur *Phaeochrous thomensis* Arrow, 1909 (Coleoptera, Scarabaeoidea, Hybosoridae). *Faunitaxys*, 11(39): 1 – 5. [https://doi.org/10.57800/faunitaxys-11\(39\)](https://doi.org/10.57800/faunitaxys-11(39))

Faunitaxys est échangée avec les revues suivantes (« print versions ») :

- Annali del Museo Civico di Storia Naturale G. Doria (Italie)
- Boletín de la Asociación española de Entomología (Espagne)
- Boletín de la Sociedad Andaluza de Entomología (Espagne)
- Bollettino del Museo di Storia Naturale di Venezia (Italie)
- Bulletin de la Société linnéenne de Lyon (France)
- Bulletin of Insectology (Italie)
- Heteropterus Rev. Entomol. (Espagne)
- Israel Journal of Entomology (Israël)
- Klapalekiana (République Tchèque)
- Koleopterologische Rundschau (Allemagne)
- Memorie del Museo Civico di Storia Naturale di Verona (Italie)
- Nova Supplementa Entomologica (Allemagne)
- Proceedings of the Entomological Society of Washington (USA)
- Revue suisse de Zoologie (Suisse)
- Spixiana (Allemagne)
- Stuttgarter Beiträge zur Naturkunde A, Biologie (Allemagne)
- Zoosystematica Rossica (Russie)

Faunitaxys

Volume 11, Numéro 40, Juin 2023

SOMMAIRE

Cerambycidae (Coleoptera) d'Equateur et d'Amérique centrale: nouvelles espèces et nouvelles données.

Josef Vlasak & Antonio Santos-Silva 1 – 12

CONTENTS

Cerambycidae (Coleoptera) from Ecuador and Central America: new species and new country records.

Josef Vlasak & Antonio Santos-Silva 1 – 12



Illustration de la couverture :

The forest around Volcán Sumaco, Ecuador.

Crédits:

Antonio Santos-Silva: Fig. 1-5, 6-11, 12-21, 22-29 & 30-36

Katerina Vlasakova: couverture