



HAL
open science

Using time-to-collision in the loss function of deep learning algorithm to improve pedestrian trajectory predictions

Raphael Korbmacher, Huu-Tu Dang, Antoine Tordeux

► **To cite this version:**

Raphael Korbmacher, Huu-Tu Dang, Antoine Tordeux. Using time-to-collision in the loss function of deep learning algorithm to improve pedestrian trajectory predictions. 11th International Conference on Pedestrian and Evacuation Dynamics (PED 2023), Jun 2023, Eindhoven, Netherlands. . hal-04140292

HAL Id: hal-04140292

<https://hal.science/hal-04140292>

Submitted on 28 Jun 2023

HAL is a multi-disciplinary open access archive for the deposit and dissemination of scientific research documents, whether they are published or not. The documents may come from teaching and research institutions in France or abroad, or from public or private research centers.

L'archive ouverte pluridisciplinaire **HAL**, est destinée au dépôt et à la diffusion de documents scientifiques de niveau recherche, publiés ou non, émanant des établissements d'enseignement et de recherche français ou étrangers, des laboratoires publics ou privés.

Using time-to-collision in the loss function of deep learning algorithm to improve pedestrian trajectory predictions



RAPHAEL KORBMACHER¹, HUU-TU DANG², ANTOINE TORDEUX¹

¹ School for Safety Engineering and Mechanical Engineering, University of Wuppertal, Germany

² UMR 5505 IRIT, University Toulouse 1 Capitole, Toulouse, France



Motivation

- **Pedestrian trajectory prediction** is a hot topic due to many real world applications like autonomous vehicles or social robots.
- **Deep Learning algorithms** have shown to outperform the physics-based models in terms of distance error.
- Nevertheless, the predictions show **too many collision and overlaps**, especially at higher densities.
- In this work, we want to implement **Time-To-Collision** into the architecture of the Deep learning algorithms to improve collision avoidance.

Objectives

- We train and test the algorithm with **ETH** and **UCY** pedestrian trajectory datasets.
- The predictions are evaluated with the distance based **average displacement error (ADE)** and a distance-based **collision metric (Col)**.
- We use the Social LSTM from Alahi et al. [1] as baseline and as core for the new TTC-SLSTM algorithm.
- The prediction results with **SLSTM** and **TTC-SLSTM** are compared using the two evaluation metrics ADE and Col.

TTC error metric

- The **TTC metric** estimates how long it would take for two pedestrians to collide with each other if they continue to move at their current velocity.
- Based on this concept, we create an sigmoidal error metric L_τ , **low TTC resulting in high loss**.

$$L_\tau = \frac{1}{1 + \exp(-s(\tau - \delta))}$$

- **Idea: Penalize predictions with low TTC**

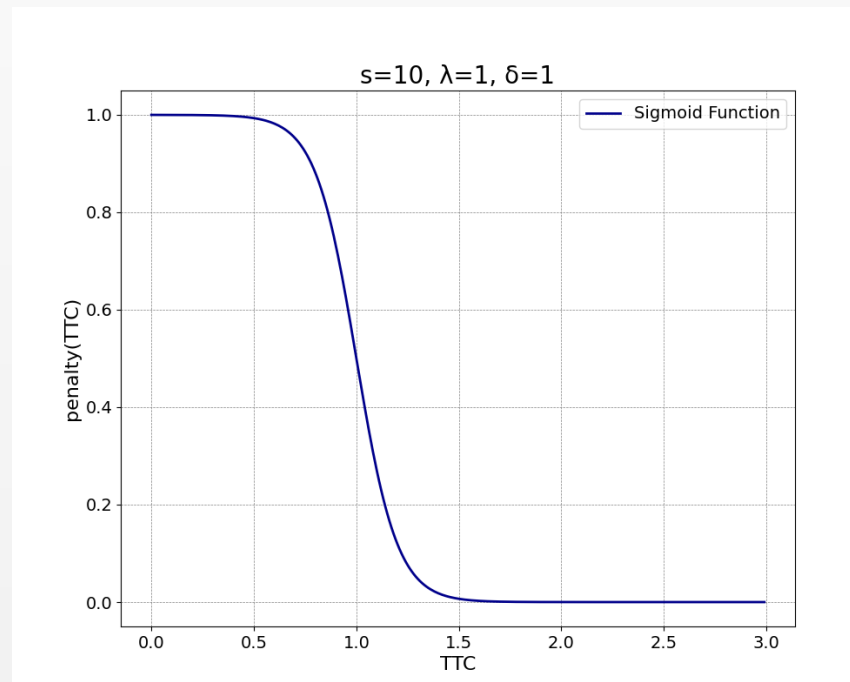


Fig. 1: TTC penalty function L_τ

Results

- We could improve the prediction for **both ADE and Col error metrics** (Fig. 2).
- With rising λ the metric Col **goes down continuously**. ADE decreases at first, but then starts to increase.
- Predictions are **more realistic** with better collision avoidance; see Fig. 3.

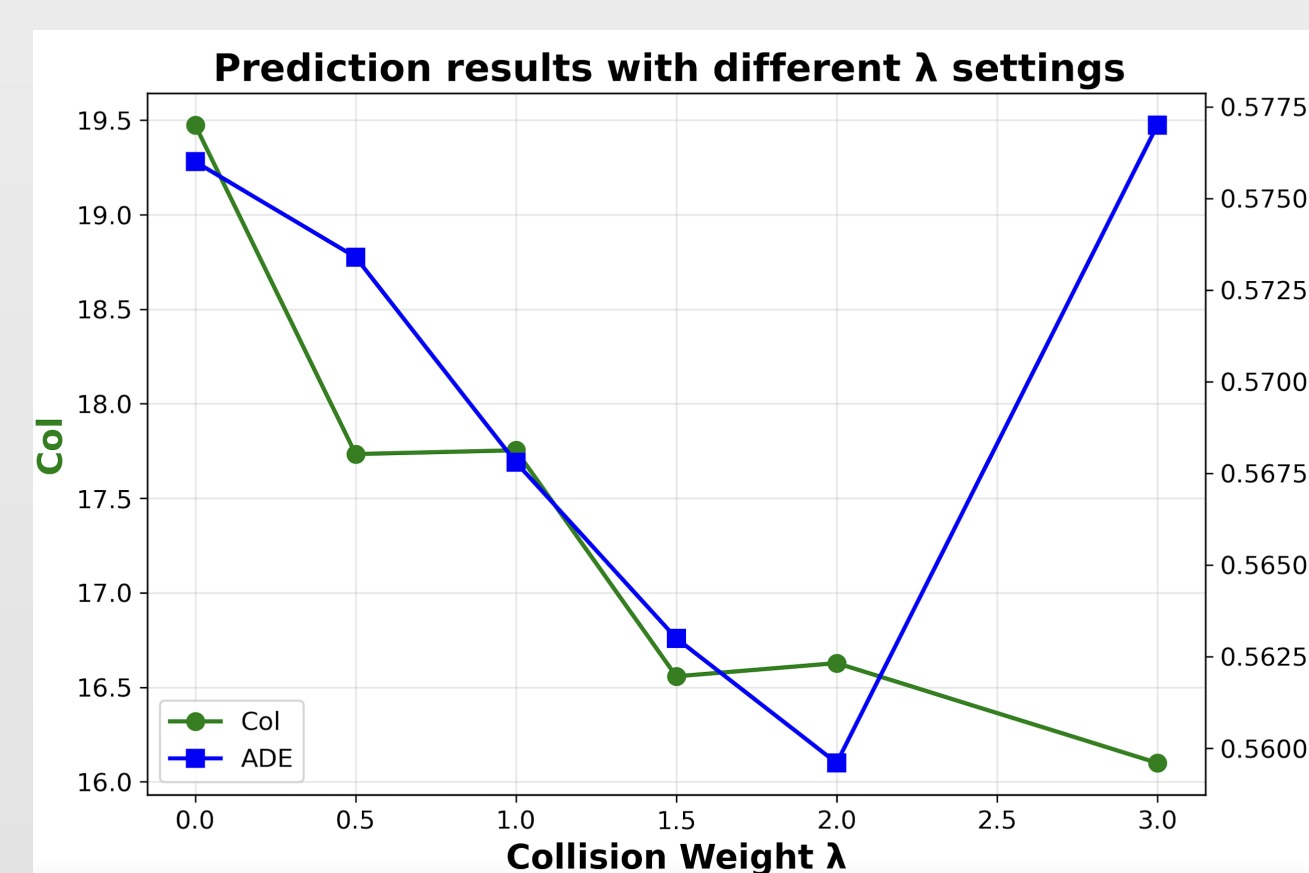


Fig. 2: Testing prediction error metrics against λ

New TTC-SLSTM algorithm

- The core of the TTC-SLSTM is the SLSTM. We keep the settings, but **add TTC in the loss function L**

$$L = ADE + \lambda L_\tau, \quad \lambda \geq 0$$

- The **parameter λ** quantifies the **impact of TTC loss on the training** (see Fig.2).

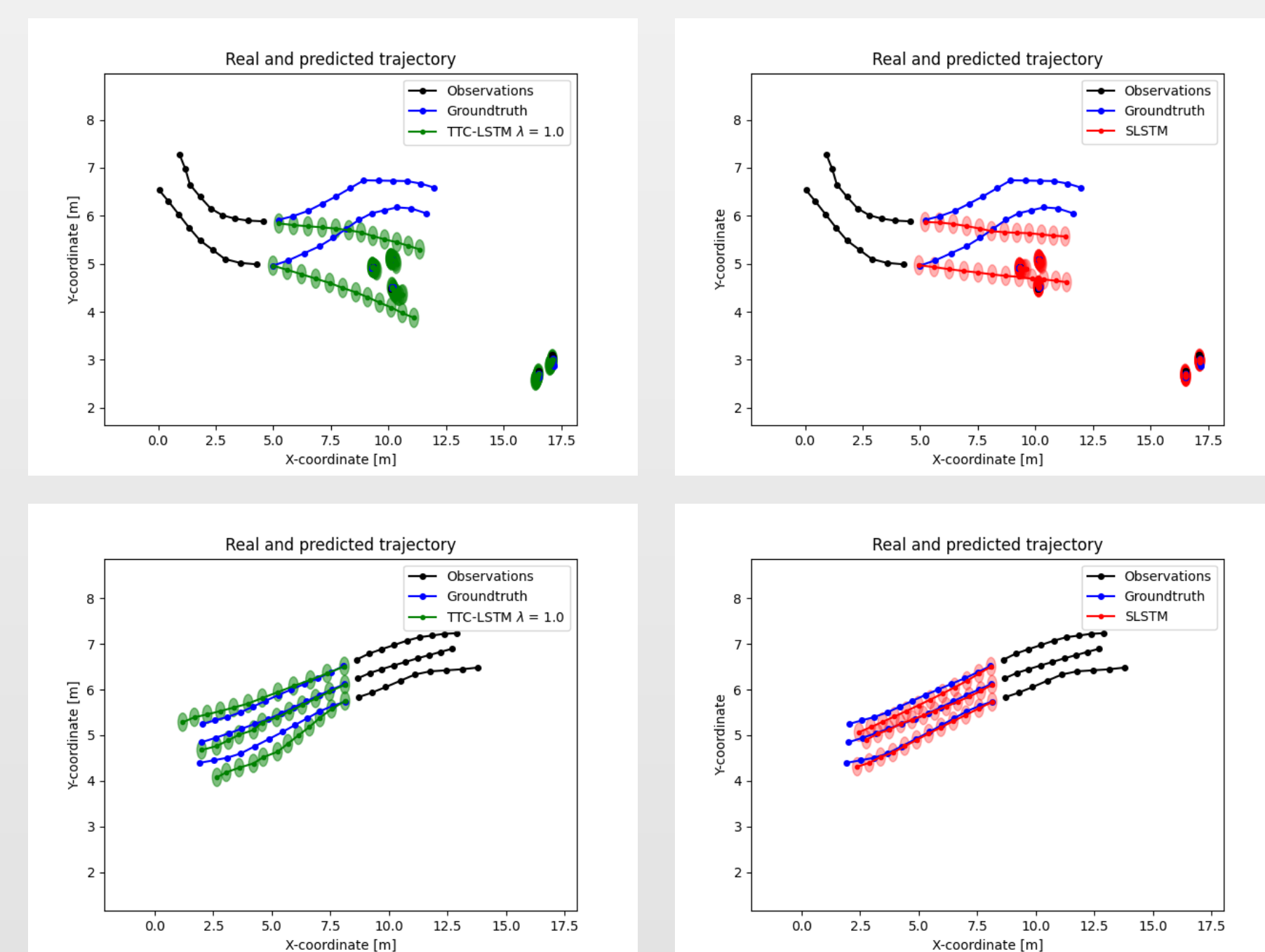


Fig. 3: Trajectory predictions with TTC-SLSTM and SLSTM

Future works

By incorporating not only the distance-error metric, but also the TTC error metric into the training loss function, we could significantly improve the trajectory predictions.

In further work we aim to:

- Investigate whether the predictions improve in different environments and especially **higher densities**.
- Explore the performance of **other hybrid deep learning architectures** including time-to-collision and pedestrian-related metrics.

References

- [1] Alahi, A., Goel, K., Ramanathan, V., Robicquet, A., Fei-Fei, L., & Savarese, S. (2016). Social lstm: Human trajectory prediction in crowded spaces. In *Proceedings of the IEEE conference on computer vision and pattern recognition* (pp. 961-971).
- [2] Karamouzas, I., Skinner, B., & Guy, S. J. (2014). Universal power law governing pedestrian interactions. *Physical review letters*, 113(23), 238701.