



HAL
open science

Description of two new species of Cerambycidae (Coleoptera) and notes on Macrodonia crenata and Deltaspis cyanipes.

Stéphane Le Tirant, Antonio Santos Silva

► **To cite this version:**

Stéphane Le Tirant, Antonio Santos Silva. Description of two new species of Cerambycidae (Coleoptera) and notes on Macrodonia crenata and Deltaspis cyanipes.. *Faunitaxys*, 2023, 11 (44), pp.1-3. hal-04138389

HAL Id: hal-04138389

<https://hal.science/hal-04138389>

Submitted on 22 Jun 2023

HAL is a multi-disciplinary open access archive for the deposit and dissemination of scientific research documents, whether they are published or not. The documents may come from teaching and research institutions in France or abroad, or from public or private research centers.

L'archive ouverte pluridisciplinaire **HAL**, est destinée au dépôt et à la diffusion de documents scientifiques de niveau recherche, publiés ou non, émanant des établissements d'enseignement et de recherche français ou étrangers, des laboratoires publics ou privés.



Distributed under a Creative Commons Attribution - NonCommercial - NoDerivatives 4.0 International License

Faunitaxys

*Revue de Faunistique, Taxonomie et Systématique
morphologique et moléculaire*



Volume 11
Numéro 44

Juin 2023

ISSN (Print) : 2269 - 6016
ISSN (Online) : 2970 - 4960
Dépôt légal : Juin 2023

Faunitaxys

*Revue de Faunistique, Taxonomie et Systématique
morphologique et moléculaire*

ZooBank : <http://zoobank.org/79A36B2E-F645-4F9A-AE2B-ED32CE6771CC>

Directeur de la publication, rédacteur, conception graphique et PAO:

Lionel Delaunay

Cette revue ne peut pas être vendue

Elle est distribuée par échange aux institutions (version papier)

et sur simple demande aux particuliers (format PDF)

à l'adresse suivante:

AFCFF (Association française de Cartographie de la Faune et de la Flore)

28, rue Voltaire, F- 42100 Saint Etienne

E-mail: faunitaxys.journal@gmail.com

Elle est disponible librement au téléchargement à partir du site:

<http://faunitaxys.fr/>

La parution de *Faunitaxys* est apériodique

Faunitaxys est indexé dans / *Faunitaxys* is indexed in:

- **Zoological Record**

Articles and nomenclatural novelties are referenced by:

- **ZooBank** (<http://zoobank.org>)

Online Archives:

- **HAL** (<https://hal.archives-ouvertes.fr>)

- **Internet Archive** (<https://archive.org>)

Imprimée sur les presses de SPEED COPIE, 6, rue Tréfilerie, F- 42100 Saint-Etienne

Imprimé le 22 06 2023

Description of two new species of Cerambycidae (Coleoptera) and notes on *Macrodonia crenata* and *Deltaspis cyanipes*

STEPHANE LE TIRANT (1, *) & ANTONIO SANTOS-SILVA (2)

(1) Insectarium de Montréal, 4581 rue Sherbrooke Est Montréal, Québec, Canada, H1X 2B2.

- stephane.letirant@montreal.ca - Orcid: <https://orcid.org/0000-0001-7463-5621>

- ZooBank : <http://zoobank.org/A9391F8A-15D7-4D3B-9E3F-7123BA27EA2E> - <http://zoobank.org/0A5FD3A9-CCE7-4124-8F37-0FDE53D758BA>

(2) Museu de Zoologia, Universidade de São Paulo, Avenida Nazaré # 481, 04263-000, São Paulo, SP, Brazil.

- toncriss@uol.com.br - Orcid: <https://orcid.org/0000-0001-7128-1418>

- ZooBank: <http://zoobank.org/147209A1-FA0E-4AE3-8F10-ASCADAB6EE98>

* Corresponding author

Keywords:

Coleoptera; new species;
Cerambycidae; taxonomy;
Prioninae; description;
Lamiinae; Mexico;
Longhorned Panama;
beetles; Neotropical
Prionus; region.
Lasiolepturges;

Abstract. – The chromatic and morphological variations in *Macrodonia crenata* (Olivier, 1795) are described. The number of specimens in the original description of *Deltaspis auromarginata* var. *cyanipes* Bates, 1885 is discussed, and additional comments on the species are provided. Two new species are described: *Prionus* (*Prionus*) *hectori* sp. nov., from Mexico; and *Lasiolepturges dealmeidae* sp. nov. from Panama.

Le Tirant S. & Santos-Silva A., 2023. – Description of two new species of Cerambycidae (Coleoptera) and notes on *Macrodonia crenata* and *Deltaspis cyanipes*. *Faunitaxys*, 11(44): 1 – 13.

DOI: [https://doi.org/10.57800/faunitaxys-11\(44\)](https://doi.org/10.57800/faunitaxys-11(44))

ZooBank: <http://zoobank.org/73FB0EE9-720F-49F0-AAA2-AD8B674E7EBF>

Received: 14/06/2023 – Revised: 20/06/2023 – Accepted: 21/06/2023

Introduction

Despite being a subject of study for numerous authors, particularly in the past 100 years, the fauna of Mexico and Central and South America continues to unveil undiscovered species. Additionally, the examination of some specimens sometimes reveals variations that have yet to be formally documented.

Macrodonia Lacordaire, 1830 includes 12 species distributed from Guatemala to southern South America (Bezark 2023; Monné 2023c; Tavakilian & Chevillotte 2022). Of these, eight are known only from South America, two only from Central America, and two from Central and South America. Notes on the chromatic and morphological variations in *M. crenata* (Olivier, 1795) are described.

American *Prionus* (*Prionus*) Geoffroy, 1762 comprises 11 species distributed from Canada to Mexico (Bezark 2023; Monné 2023c; Tavakilian & Chevillotte 2022). Herein, a new species of this genus from Mexico is described.

Deltaspis Audinet-Serville, 1834 includes six species known only from Mexico (Bezark 2023; Monné 2023a; Tavakilian & Chevillotte 2022). Herein, we correct the number of specimens in the original description of *D. cyanipes* Bates, 1885 and comment on its geographical distribution in Mexico.

Lasiolepturges Melzer, 1928 is a small genus of Acanthocinini, distributed in northern and eastern South America (Bezark 2023; Monné 2023b; Tavakilian & Chevillotte 2022). Herein we describe a new species of this from Panama.

Material and Methods

The primary basis of this study was a collection of specimens that were sent by the first author to the second author for identification. However, we are also describing a new species of Acanthocinini based on a series of specimens received from the late James E. Wappes.

Photographs were taken at MZSP (see below) with a Canon EOS TD Mark II camera, Canon MP-E 65 mm f/2.8 1-5X macro lens, controlled by Zerene Stacker AutoMontage software. Measurements were taken in mm by using an ocular Hensoldt/Wetzlar - Mess 10 in the Leica MZ6 stereomicroscope, which was also used in the study of the specimens.

In the “Material examined” of the known species, only specimens that were sent for study by the first author are listed; the reference to each of these species is restricted to the original description.

The collection acronyms used in the text are as follows:

FSCA – Florida State Collection of Arthropods, Gainesville, Florida, USA

IMQC – Insectarium de Montréal, Québec, Canada

ISNB – Institut Royal des Sciences Naturelles de Belgique, Brussels, Belgium

MZSP – Museu de Zoologia, Universidade de São Paulo, São Paulo, Brazil

Results

CERAMBYCIDAE Latreille, 1802

PRIONINAE Latreille, 1802

MACRODONTIINI Thomson, 1861

Macrodonia Lacordaire, 1830

Reviewer :

Ronald D. Cave (USA) - <http://zoobank.org/23337FBC-F0D0-427D-80EF-45AEBB59C7DD> - <https://orcid.org/0000-0002-5209-5975>



This is an open access article under the terms of the Creative Commons Attribution-NonCommercial-NoDerivs License, which permits use and distribution in any medium, provided the original work is properly cited, the use is non-commercial and no modifications or adaptations are made.

Copyright 2023 The Authors. *Faunitaxys* published by Lionel Delaunay on behalf of the AFCFF (Association française de Cartographie de la Faune et de la Flore).



Figures 1-7. *Macrodonia crenata* (Olivier, 1795), ♂.

1. Dorsal habitus. 2. Ventral habitus. 3. Lateral habitus. 4. Head, frontal view. 5. Aedeagus, lateral habitus. 6. Aedeagus, dorsal habitus. 7. Aedeagus, ventral habitus.



Figures 8-15. *Macrodonia* spp.

8-13. *Macrodonia crenata* (Olivier, 1795). 8. Head and pronotum, ♂, specimen 1, from Brazil (Mato Grosso, Corumbá) (MZSP 16306). 9. Head and pronotum, ♂, specimen 2, from Brazil (Pará, Óbidos) (MZSP 16308). 10. Head and prothorax, ventral view, ♂, specimen 2. 11. Head, lateral view, ♂, specimen 2. 12. Head and pronotum, ♀ from Brazil (Mato Grosso, Corumbá) (MZSP 13303). 13. Head and prothorax, ventral view, ♀ (MZSP 13303).

14. *Macrodonia dejeanii* Gory, 1839, ♀ from Colombia, head and prothorax, ventral view.

15. *Macrodonia batesi* Lameere, 1912, holotype ♀, head and prothorax, ventral view.

Macrodontia crenata (Olivier, 1795)

(Fig. 1-15)

Prionus crenatus Olivier, 1795: 27.*Prionus quadrispinosus* Schönherr, 1817: 346.*Macrodontia castanea* Blanchard, 1848: 210.*Macrodontia ehrenreichi* Kolbe, 1894: 42.

Remarks. – Among the species of *Macrodontia*, *M. crenata* is the species with the greatest amount of morphological and chromatic variation not associated with a geographical region. The most common variations in both sexes are:

1. Vertex smooth (Fig. 8, 12), sparsely punctate, or abundantly punctate (in the latter case, sometimes rugose-punctate) (Fig. 1, 4, 9);
2. Central plate on the pronotum smooth (Fig. 8, 12), sparsely punctate, abundantly and finely punctate (Fig. 9), abundantly and coarsely punctate (Fig. 1), or densely rugose-punctate;
3. Elytra proportionally narrow and elongate or moderately wide and short;
4. Elytra distinctly longitudinally carinate or carina slightly evident or absent;
5. Elytra from yellowish brown to dark brown; rarely, with longitudinal blackish bands between yellowish-brown areas (Fig. 1), or darker dorsally than laterally.

Bleuzen (1994) stated: “In the large number of specimens that I have been able to study, I have been able to note a certain number of variations. Firstly, there is the colour, which varies from brown ochre to dark brown. This seems to me to be principally due to the ageing and desiccation of the specimens, as material which is old or overexposed to sunlight is always light whilst fresh and correctly killed material is dark coloured (the elytra being slightly translucent). The other variations are: the more or less strong presence of ribs, punctation and the microstructure of the pronotum in both sexes. Over the whole range of specimens, a progressive gradation has become evident. It appears that the less punctate specimens come from the Amazon basin whilst the most coarsely punctate ones come, in general, from the outlying areas such as the Guyanan plateau, the start of the Andean foothills and the Mato Grosso plateau.”

In addition to these variations, males, especially those of small size (Fig. 1-4), can also have mandibles like females (Fig. 12-13). In the males with mandibles similar to those of females, the submentum (Fig. 2) is also equal to that of females (Fig. 13), *i.e.*, the anterior punctate region is longer and less transverse than in typical males (Fig. 10) and is not tuberculate laterally close to eyes (tuberculate in males (Fig. 11) with typical masculine mandibles).

We illustrate a male (Fig. 1-7) with mandibles and submentum as in females, but also with distinct blackish bands on the elytra. This male can be recognized as *M. crenata* rather than a member of the group of species that always have these bands (*M. antonkozlovi* Santos-Silva, 2016; *M. batesi* Lameere, 1912; *M. castroi* Marazzi, Pavisi & Marazzi, 2008; *M. dejeanii* Gory, 1839; *M. marechali* Bleuzen, 1990; and *M. mathani* Pouillaude, 1915) by the shape and sculpturing of the submentum as in females of *M. crenata*. Furthermore, we already saw photograph of a male with the typical mandibles of large males of *M. crenata* with the elytral blackish bands. In females of the other species, the punctures on the anterior region of the submentum are less distinct (Fig. 14, 15). Although we see any males of *M. antonkozlovi*, *M. batesi*, *M. castroi*, *M. dejeanii*, *M. marechali*, and *M. mathani* with mandibles like in females, it is expected that they also have the submentum as in females.

According to Schönherr (1817): “[*Prionus*] *Crenatus*. Fabr. S. El. II. p. 264.35. Loc. *India*.” Therefore, he provided a replacement name for Olivier’s species: “*Quadri-spinosus*. *Prion. crenatus*. Oliv. Ent. IV. 66. p. 27.29. T. 2. f. 45. Loc. *Cayenna*.” Gory (1839) refuted the replacement name (translated): “I do not know what reason M. Schoenherr may have had, in his synonymy, for preceding the name of *Prionus crenatus*, Oliv., with that of *quadri-spinosus*, without the name of the author; I therefore believe I should restore the name originally adopted.” Lameere (1904) stated (translated): “It is wrong that Schönherr changed the name of this species, probably because the nomenclature contained in 1817 a second *Prionus crenatus*: the latter, which is a *Macrotoma*, was only published by Fabricius in 1801 (Syst. Eleuth, II, p. 264), and it is he who should have been renamed.” According to Bousquet (2016), the work in which Fabricius described *Prionus crenatus* was published in 1802; and on the work in which Olivier described *Prionus crenatus*: “This volume is usually dated 1795, the date on the title page. However, due to a diplomatic and scientific mission of Olivier to the Ottoman Empire, livraison 23, which comprised about 3/4 of the volume (?starting at page 81 of Capricorne), was published in 1800. It was recorded on the *Fructidor an VIII* (= 18 August–22 September 1800) issue of the *Journal général de la Littérature de France*.” Therefore, the synonymy proposed by Gory (1839) is correct: *Prionus quadrispinosus* is an unnecessary replacement name and thus a junior synonym of *Prionus crenatus* Olivier. Lameere (1904) synonymized *Macrodontia castanea* and *M. ehrenreichi* with *M. crenata*. Photographs of the holotypes of *M. castanea* and *M. ehrenreichi* (Pirk 2023) confirm the synonymies proposed by Lameere (1904).

Currently, *M. crenata* is recorded from Colombia, Venezuela, Suriname, French Guiana, Ecuador, Peru, Bolivia (Beni, Cochabamba, Santa Cruz), Brazil (Acre, Amazonas, Pará, Rondônia, Mato Grosso, Goiás, Mato Grosso do Sul), and Paraguay (Monné 2023; Bezark 2023; Tavakilian & Chevillotte 2022).

Male genitalia (Fig. 5-7). – In lateral view (Fig. 5), aedeagus slightly arched; tegmen shorter than penis; parameres (Fig. 5-7) gradually narrowed toward rounded apex, with moderately abundant, short and long, yellowish-brown setae; phallobase 4.0 times longer than parameres.

Material examined (only the specimen with blackish elytral bands). PERU, *Loreto*: Requena, 1 ♂, 13.I.1999, local collector (IMQC).

PRIONINI Latreille, 1802

Prionus (*Prionus*) Geoffroy, 1762*Prionus* (*Prionus*) *hectori* sp. nov.

(Fig. 16-21)

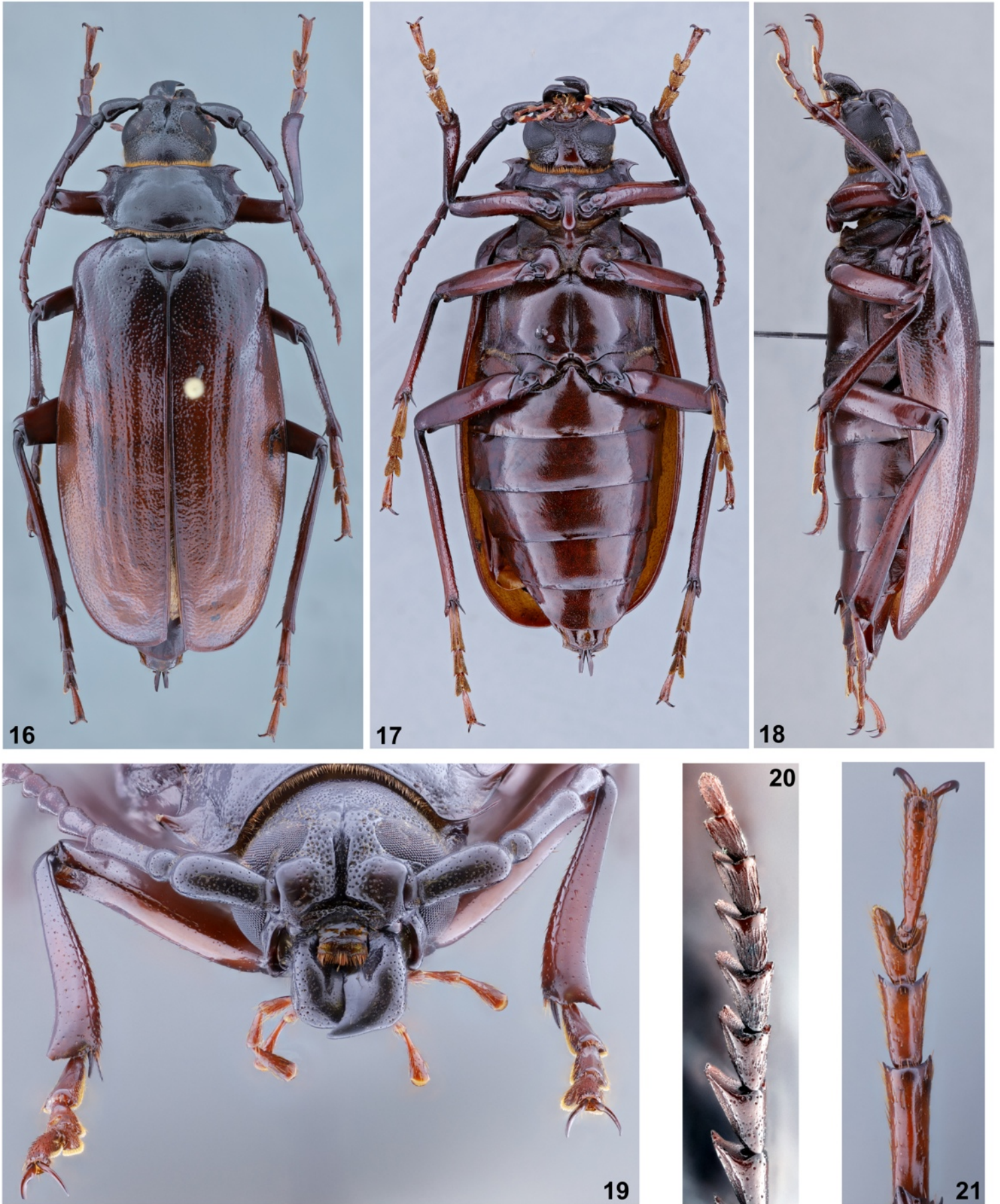
ZooBank: <http://zoobank.org/1150F769-2698-4E99-BDED-E849E6B0D78A>

Holotype, ♀, MEXICO, *Durango*: Pueblo Nuevo, 2000 m, VII.2022, Hector Arellano (MZSP).

Description

Coloration. – Integument mostly dark brown; elytra gradually, slightly lighter toward apex; posterior region of gulumentum brown; ventral mouthparts light brown except yellowish apex of palpomeres; anteclypeus and labrum mostly dark yellowish brown. Femora and tibiae dark reddish brown, darker depending on light intensity, except dark-brown apex of femora and base of tibiae. Tarsi reddish brown with irregular blackish areas, except protarsomeres I mostly blackish.

Head. – Frons short, depressed, abundantly, coarsely punctate, except area under antennal tubercles abundantly, finely punctate; with



Figures 16-21. *Prionus (Prionus) hectori* sp. nov., holotype ♀.

16. Dorsal habitus. 17. Ventral habitus. 18. Lateral habitus. 19. Head, frontal view. 20. Antennomeres VIII-XV, lateral view. 21. Metatarsus, dorsal habitus

a few minute, yellowish-brown setae. Area between antennal tubercles and anterior margin of upper eye lobes deeply, moderately widely, longitudinally sulcate centrally; abundantly, coarsely punctate laterally, moderately abundantly, finely punctate within longitudinal sulcus; glabrous toward frons and on longitudinal sulcus; most punctures with erect, short or long yellowish-brown setae on area close to eyes. Area between upper eye lobes slightly tumid; with narrow, shallow longitudinal sulcus centrally; abundantly, coarsely, partially confluent punctate laterally, punctures gradually finer and sparser toward center; sides with a few short, erect yellowish-brown setae; remaining surface glabrous. Area between posterior margin of upper eye lobes and prothorax with narrow, very shallow longitudinal sulcus centrally, not reaching prothorax; abundantly finely punctate, punctures sparser toward central region; with minute yellowish-brown setae posteriorly, glabrous on remaining surface. Area behind eyes densely, coarsely, confluent punctate close to upper eye lobe and superior region of lower eye lobe, except narrow, smooth area close to eye; abundantly, finely punctate close to vertex, densely, coarsely, partially confluent punctate on remaining area behind upper eye lobes and superior half of lower eye lobes, punctures finer than those close to eye; remaining surface behind lower eye lobes moderately coarsely rugose-punctate; with moderately abundant yellowish-brown setae not obscuring integument, setae slightly longer and more abundant close to lower eye lobe. Genae abundantly, minutely punctate close to frontal region of eye, sparsely, finely punctate on remaining frontal surface, punctures denser toward ventral surface; some fine punctures with minute yellowish-brown seta. Posterior half of gulum glabrous, smooth close to prothorax and sides of remaining surface, somewhat rugose-punctate on remaining surface; anterior half with sparse, moderately short, erect yellowish-brown setae, almost absent centrally, and abundantly, coarsely, confluent punctate, except striate-punctate area close to intermaxillary process. Antennal tubercles moderately sparsely, coarsely punctate basally, punctures gradually sparser and finer toward smooth apical region; glabrous. Wide central area of postclypeus abundantly, coarsely punctate, except shallower and partially confluent punctate, depressed central area close to anteclypeus; with sparse, erect yellowish-brown setae laterally, a few minute yellowish-brown setae centrally, except glabrous depressed central region. Sides of postclypeus, smooth, glabrous. Labrum coplanar with anteclypeus at posterior 2/3, inclined at anterior third; with a few short, erect yellowish-brown setae on posterior 2/3, and dense yellowish-brown setae directed forward on anterior third, setae paler centrally. Distance between upper eye lobes 0.3 times distance between outer margins of eyes; in ventral view, distance between lower eye lobes 0.25 times distance between outer margins of eyes. Antennae 15-segmented; 0.7 times elytral length, slightly surpassing anterior third of elytra. Scape sparsely, finely punctate, with coarser punctures interspersed; glabrous. Pedicel abundantly, finely punctate basally, sparsely, finely punctate on remaining surface, except smooth dorsal apex, with coarser punctures interspersed, especially ventrally; with short, erect yellowish-brown setae on base of dorsal surface and a few short, erect yellowish-brown setae on base of ventral surface. Antennomere III cylindrical, flattened ventrally; apical margin of ventral surface widely concave; outer apical angle rounded and inner apical angle slightly projected; glabrous, sparsely, finely punctate dorsally and laterally, except smooth apex of dorsal surface; densely, moderately coarsely punctate ventrally; glabrous. Antennomeres IV-VIII gradually widened from base to apex; ventral surface flattened; apical margin of ventral surface of IV widely concave; apical margin of ventral surface of V-VIII distinctly projected backward on outer surface; outer apex of dorsal surface of IV-VIII notched, less distinctly on IV; inner apex of dorsal surface of IV-VIII distinctly, subacutely projected; dorsal and lateral surface of IV-VIII sparsely, finely punctate with coarser punctures interspersed, coarser punctures more abundant toward VIII; ventral surface of IV-VIII moderately abundantly and coarsely punctate on inner surface, densely, coarsely punctate on outer surface, punctures on outer surface gradually denser and anastomosed toward VIII; IV-VIII glabrous. Antennomeres IX-X gradually widened from base to apex; apical margin of ventral surface distinctly imbricate, with apex of imbrication emarginate centrally; imbrication with longitudinal carina centrally from base to apex; surface of ventral

imbrication partially striolate; dorsal surface sparsely, moderately coarsely punctate; lateral surfaces abundantly, coarsely punctate, punctures denser and partially confluent on X; outer apex notched; inner subrounded projected on IX; glabrous. Antennomeres XI-XIV gradually widened from base to apex; ventral surface, inner and outer apices of dorsal surface as on X, except XIV with slightly distinct imbrication; dorsal and lateral surfaces almost entirely striolate; glabrous. Antennomere XV (Fig. 20) gradually narrowed toward acute apex; entirely striolate, without imbrication ventrally; glabrous.

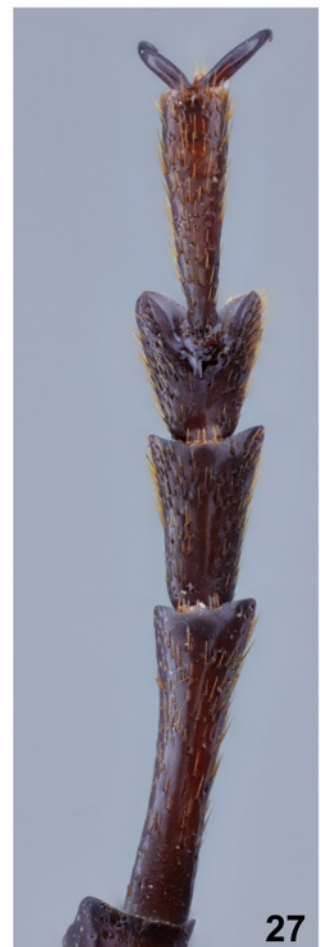
Antennal formula (ratio) based on length of antennomere III (antennomeres measured on center of dorsal surface):

– Scape = 1.00 – Pedicel = 0.34 – IV = 0.61 – V = 0.57 – VI = 0.49 – VII = 0.47 – VIII = 0.41 – IX = 0.37 – X = 0.35 – XI = 0.33 – XII = 0.32 – XIII = 0.25 – XIV = 0.22 – XV = 0.24.

Thorax. – Prothorax distinctly wider than long; anterolateral angles subtriangularly projected sideward; lateral tubercles long, spiniform located centrally; posterior region with small spine located close to rounded posterolateral angle. Pronotum with anterior margin slightly emarginate centrally; posterior margin sinuous, widely rounded centrally; with shallow, transverse sulcus on each side close to anterior margin; with shallow, transverse sulcus close to posterior margin; moderately abundantly, finely punctate, except coarser punctures laterally on anterior half, rugose-punctate laterally on posterior half, densely, finely punctate within posterior sulcus, and smooth posterocentral region; with sparse, moderately long, suberect yellowish-brown setae close to anterolateral angles and sides of posterior half, and a few short, erect yellowish-white setae on each side of posterior third of disc. Hypomera mostly smooth and glabrous. Prosternum abundantly, finely punctate, punctures finer and denser centrally; some puncture with minute yellowish-brown seta. Prosternal process distinctly more elevated than prosternum; basal region abundantly, finely punctate; remaining surface sparsely, finely punctate; glabrous, except moderately abundant yellowish-brown setae directed backward on rounded apex. Mesoventrite smooth, glabrous centrally; remaining surface abundantly, finely punctate, with abundant yellowish-brown pubescence not obscuring integument. Mesanepisterna and mesepimera with sculpturing and pubescence as on sides of mesoventrite, except area close to coxa on mesepimera with sparser punctures and pubescence. Mesoventral process with sides convergent toward apex; apex strongly notched centrally; with abundant yellowish-brown pubescence not obscuring integument. Metanepisterna with abundant yellowish-brown pubescence not obscuring integument. Metaventrite abundantly, finely punctate laterally, punctures finer and slightly sparser on remaining surface; sides with abundant yellowish-brown pubescence not obscuring integument, and remaining surface with a few minute yellowish-white setae. Scutellum large; sides slightly convergent toward apex; apex subtruncate, slightly emarginate centrally; sparsely, finely punctate; with a few short yellowish-white setae.

Elytra. – Sides distinctly widened from anterior sixth; abundantly, finely punctate, punctures denser from anterior quarter; apex rounded (sutural angle with short triangular projection on right elytron); dorsal surface shallowly, longitudinally sulcate from anterior quarter to posterior sixth; entirely glabrous.

Legs. – Femora sparsely, finely punctate; with a few short, erect yellowish-brown setae on outer surface, more abundant on profemora, sparse, erect yellowish-brown setae on inferior margin of inner surface of meso- and metafemora, and sparse, erect yellowish-brown setae on dorsal surface of profemora. Protibiae widened from base to apex; outer apex projected sideward; sparsely, finely punctate dorsally and laterally, except coarser punctures centrally close to inner margin of dorsal surface; with sparse, minute yellowish-brown setae dorsally and laterally; ventral surface with sparse, erect, thick dark yellowish-brown setae. Meso- and metatibiae abundantly, finely punctate; apical region or mesotibiae widened, with spiniform projection on apex of dorsal surface; apex of dorsal surface of metatibiae triangularly projected; dorsal surface of meso- and metatibiae glabrous, sides with sparse yellowish-brown setae, more abundant on mesotibiae, and ventral surface with moderately abundant dark yellowish-brown setae. Dorsal surface of tarsomeres with sparse, decumbent yellowish-brown setae, absent on center of tarsomeres I-III (Fig. 21); metatarsomere I as long as II-III together.



Figures 22–27. *Prionus (Prionus)* spp.

22–24. *Prionus (Prionus) aztecus* Casey, 1912, ♀ from Mexico (Durango). 22. Dorsal habitus. 23. Ventral habitus. 24. Metatarsus, dorsal habitus. 25–27. *Prionus (Prionus) mexicanus* Bates, 1884, ♀ from Mexico (Durango). 25. Dorsal habitus. 26. Ventral habitus. 27. Metatarsus, dorsal habitus.

Abdomen. – Ventrites abundantly, minutely punctate, except smooth central apex of ventrites 1-4, and fine puncture on posterior half of ventrite 5; ventrites 1-4 mostly glabrous, with sparse yellowish-brown setae on abdominal process and sides of ventrite 1, a few minute yellowish-white setae on 2-3, a few minute yellowish-white setae on anterior 2/3 of ventrite 4 and a few short yellowish-brown setae close to smooth area of ventrite 4; ventrite 5 with sparse, short yellowish-brown setae basally and laterally and sparse, a few minute yellowish-white setae on remaining surface; apex of ventrite 5 subtruncate.

Dimensions (mm)

- Total length, 46.50;
- Prothoracic length, 5.05;
- Anterior prothoracic width, 11.10;
- Posterior prothoracic width, 10.30;
- Maximum prothoracic width, 12.90;
- Humeral width, 15.05;
- Elytral length, 32.25.

Etymology. – This species is dedicated to our friend Hector Arellano who sent us the specimen for study.

Remarks. – By the spongy setal pads of the metatarsomeres distinctly longitudinally sulcate, the new species belongs to *Prionus* (*Prionus*) (Santos-Silva *et al.* 2016; Schiefer 2022). Schiefer (2022) revalidated *Prionus* (*Antennalia*) Casey, 1912 and *Prionus* (*Neopolyarthron*) Semenov, 1899. In females of *P.* (*Neopolyarthron*), the antennae have 15-23 antennomeres (Schiefer 2022), and in females of *P.* (*Antennalia*) they have at least 20 antennomeres; in both subgenera, the metaventrite is glabrous in females. Although the number of antennomeres may allow including the new species in *P.* (*Neopolyarthron*), the laterally pubescent metaventrite excludes this option; the number of antennal segments and the pubescence on the metaventrite also exclude *P.* (*Antennalia*). The key to species of *Prionus* (*Prionus*) by Santos-Silva *et al.* (2016) leads *Prionus* (*Prionus*) *hectori* sp. nov. to the alternative of couplet “9,” with *P.* (*P.*) *aztecus* Casey, 1912.

Females of *Prionus* (*Prionus*) *hectori* sp. nov. differ from those of *P.* (*P.*) *aztecus* (Fig. 22-24) as follows: in ventral view (Fig. 17), distance between lower eye lobes slightly larger than maximum diameter of scape; metanepisterna and sides of metaventrite with very short pubescence and remaining surface of metaventrite almost glabrous (Fig. 17); apex of the scutellum slightly narrower than basal region; elytra distinctly expanded from anterior sixth; and dorsal surface of tarsi, especially metatarsi, subglabrous (Fig. 21). In females of *P.* (*P.*) *aztecus*, the distance between the eye lobes in ventral view (Fig. 23) is greater than twice the maximum diameter of the scape, the metanepisterna and sides of the metaventrite have moderately long pubescence, reaching the anterocentral region, the remaining surface has sparser but distinct pubescence (Fig. 23), the apex of the scutellum is much narrower than base, the sides of the elytra are subparallel from the base to about posterior quarter, and

the dorsal surface of the tarsi, especially metatarsi, has somewhat sparse but distinct pubescence (Fig. 24).

Females of *P.* (*P.*) *hectori* sp. nov. is also similar to females of *P.* (*P.*) *mexicanus* Bates, 1884 (Fig. 25-27), but differ by the same differences as from *P.* (*P.*) *aztecus* and by antennomeres IV-IV proportionally shorter (longer in *P.* (*P.*) *mexicanus*).

CERAMBYCINAE Latreille, 1802

TRACHYDERINI Dupont, 1836

TRACHYDERINA Dupont, 1836

Deltaspis Audinet-Serville, 1834

Deltaspis cyanipes Bates, 1885

(Fig. 28-29)

Deltaspis auromarginata var. *cyanipes* Bates, 1885: 322.

Remarks. – This species was described from Mexico (San Carlos). There are several places in Mexico named San Carlos, in many states. Selander & Vaurie (1962) did not report this locality. Monné (2023a) and Tavakilian & Chevillotte (2022) reported that the species was described based on a holotype. However, Bates (1885) stated about *Deltaspis auromarginata* Audinet-Serville, 1834: “All the examples I have seen of this species belong to the var. *D. cyanipes* (Klug, MS.), which, according to Lacordaire, is a variety of *D. auromarginata*.” Therefore, the species was described based on unknown number of syntypes.

Deltaspis cyanipes appears in Dejean (1835) as attributed to Klug. However, the name is a *nomen nudum* in Dejean (1835). We were unable to find a work by Jean Théodore Lacordaire in which he mentioned that *D. cyanipes* is a variety of *D. auromarginata*. Bates (1892), in the description of *D. rufostigma* var., discussed *D. cyanipes*, not *D. auromarginata* var. *cyanipes*: “*D. cyanipedi* (Klug = *auromarginata*, Serv.?),” “In the form and colour of the thorax this variety answers much better than *D. cyanipes* does to Serville’s description of *D. auromarginata*” and: “In *D. cyanipes* the thorax ...” Chemsak & Linsley (1982), without explanation, listed *D. cyanipes* as a species different from *D. auromarginata*, a condition maintained until today.

Monné (2023a) reported this species from Mexico (Jalisco, Puebla, Mexico, Morelos, Sinaloa, Guerrero, and Veracruz). Eya (2019) did not report the Mexican states of Mexico (recorded by Toledo 2005) nor Sinaloa (recorded by Monné 2005). Apparently, the citation of the Mexican state of Guerrero appeared for the first time in Monné (2005). However, we do not know a work mentioning this state before the citation in this catalog, as well as the state of Sinaloa. Eya (2019) confirmed the presence of this species in the Mexican state of Guerrero but not in Sinaloa. We confirm the presence of *D. cyanipes* in Sinaloa.

Material examined

- MEXICO, *Sinaloa*: Potreillos, 1950 m, 1 ♂, VII.2021, local collector (IMQC);
- Loberas, 1950 m, 1 ♀, local collector (IMQC).

With the revalidation of *Prionus* (*Antennalia*) and *Prionus* (*Neopolyarthron*), and the description of the new species, the alternative of couplet “9” in Santos-Silva *et al.* (2016) needs to be modified as follows:

- 9(8). Sides of metaventrite pubescent 9’
 — Metaventrite entirely glabrous 10 [*P.* (*Antennalia*) and *P.* (*Neopolyarthron*)]
- 9’(9). In ventral view, distance between lower eye lobes slightly greater than maximum diameter of scape; wide central area of metaventrite almost glabrous. Mexico (Durango) *Prionus* (*Prionus*) *hectori* sp. nov.
 — In ventral view, distance between lower eye lobes greater than twice maximum diameter of scape; wide central area of metaventrite pubescent. Mexico (Durango, Zacatecas) *Prionus* (*Prionus*) *aztecus* Casey, 1912



Figures 28-29. *Deltaspis cyanipes* Bates, 1885, specimens from Mexico (Sinaloa), dorsal habitus.

LAMIINAE Latreille, 1825

ACANTHOCININI Blanchard, 1845

Lasiolepturges Melzer, 1928

Lasiolepturges dealmeidae sp. nov.

(Fig. 30-37)

ZooBank: <http://zoobank.org/2F6478DE-B6E2-4FBE-9BB6-002E4BBA3DD9>

Holotype, ♂, PANAMA, Panama: km 8-13 El Llano-Cartí rd., 1-13.V.1996, Wappes, Huether & Morris leg. (FSCA).

Paratypes

PANAMA

Colón

- Sierra Llorona Lodge, 225 m, Cerro Santa Rita, 1 ♂, 2-3.VIII.2008, J.B. Heppner leg. (FSCA).

Panama

- El Llano-Cartí rd., km 8-11, 1100', 1 ♂ (MZSP), 2 females (FSCA; MZSP), 24.V-2.VI.1992, J.E. Wappes leg.;

- Cerro Campana, 820 m, 8°40'N 79°56'W, 1 ♀, 28.VI.1974, Stockwell leg. (FSCA).

Description of the holotype (Fig. 30-35)

Coloration. – Head capsule orangish brown, except most of gulamentum yellowish brown; ventral mouthparts yellowish brown; anteclypeus orangish brown with irregular yellowish-brown areas interspersed; labrum reddish brown with brown margins; scape brown with basal region slightly lighter; pedicel brown; antennomere III light brown on basal 2/3, gradually brown toward apex on apical third; antennomeres IV-VI orangish brown except brown apical region, darker area gradually shorter toward VI; antennomeres VII-XI brown. Pronotum reddish brown except part of posterior third light reddish brown; remaining surface of prothorax light reddish brown, except posterior region of prosternal process partially yellowish brown. Mesoventrite dark brown centrally, dark reddish brown laterally; mesanepisterna, mesepimera, metanepisterna, and sides of metaventrite dark brown; remaining surface of metaventrite dark reddish brown. Elytra brown except light brown apex, large dark-brown macula laterally on anterior third, from epipleural margin to sides of dorsal surface, and

large dark-brown macula, located from before middle to before posterior quarter, from epipleural margin to near suture. Profemora orangish brown except dark-brown dorsal surface and superior region of lateral surfaces of femoral club; meso- and metafemoral peduncle orangish brown; meso- and metafemoral club dark brown except orangish brown apex. Protibia mostly reddish brown; mesotibia brown, more reddish brown on apical third; metatibiae dark brown on basal 2/3, dark orangish brown on apical third. Abdominal ventrites 1-3 reddish brown with irregular, large blackish areas interspersed; ventrites 4-5 orangish brown with irregular blackish maculae.

Head. – Frons densely, finely, shallowly punctate; with abundant white pubescence not obscuring integument; with one long, erect blackish seta close to inferior region of eyes, and a few long, erect yellowish-brown setae close to remaining surface of eyes. Area between antennal tubercles with a few coarse punctures; with abundant white pubescence not obscuring integument. Remaining surface of vertex densely, finely, shallowly punctate; with sparse whitish pubescence, slightly more abundant close to median groove. Area behind upper eye lobes with somewhat abundant white pubescence not obscuring integument. Superior half of area close to lower eye lobes with narrow white pubescent band close to eye, with a few long erect dark-brown setae interspersed, glabrous on remaining surface; inferior half of area close to lower eye lobes with wide pubescent region close to eye, this area gradually widened toward ventral surface, glabrous on remaining surface. Genae with moderately abundant white pubescence not obscuring integument and a few long, erect dark-brown setae interspersed. Wide central area of postclypeus with moderately abundant white pubescence not obscuring integument, long, erect dark-brown setae interspersed close to anteclypeus, and long, erect yellowish-brown setae interspersed throughout. Sides of postclypeus glabrous, except apex with abundant yellowish-white pubescence. Labrum with moderately sparse white pubescence close to anteclypeus, pubescence absent on remaining surface; with transverse row of long, erect, thick dark-brown setae on posterior quarter, and long, erect, sparse yellowish-brown setae between posterior and anterior quarter; anterior quarter glabrous except anterior margin with dense, short fringe of yellow setae. Antennal tubercles with abundant white pubescence frontally and abundant yellowish pubescence on remaining surface, both pubescence not obscuring integument. Gulamentum smooth glabrous, except narrow area close to intermaxillary process with abundant

whitish pubescence not obscuring integument. Distance between upper eye lobes 0.26 times distance between outer margins of eyes; in frontal view, distance between lower eye lobes 0.53 times distance between outer margins of eyes. Antennae 3.9 times elytral length, reaching elytral apex at basal fifth of antennomere V. Scape with abundant yellowish pubescence dorsally, not obscuring integument, slightly distinct depending on viewing angle, abundant white pubescence partially obscuring integument inner lateral surface, and abundant yellowish-white pubescence not obscuring integument ventrally and on outer lateral surface; with short, erect yellowish setae throughout and a few long, erect dark-brown setae on apical quarter of ventral surface. Pedicel with abundant whitish pubescence not obscuring integument and a few long, erect dark-brown setae ventrally. Antennomeres III–XI with moderately sparse, minute yellowish-white pubescence; with moderately abundant, short, erect setae interspersed throughout, setae yellowish-white on III–IV, white on V–XI; III–IV with sparse, long, erect dark-brown setae ventrally, setae sparser on IV; dorsal apex of III–IX with a few long, erect dark-brown setae.

Antennal formula (ratio) based on length of antennomere III (antennomeres measured on center of dorsal surface):

– Scape = 0.98 – Pedicel = 0.07 – IV = 1.16 – V = 1.11 – VI = 1.03 – VII = 0.92 – VIII = 0.95 – IX = 0.88 – X = 0.75 – XI = 0.69.

Thorax. – Prothorax slightly wider than long; anterior constriction well marked; sides divergent toward lateral tubercle, then distinctly convergent toward posterolateral angles; lateral tubercle as a continuation of the lateral margins, located near posterior quarter. Pronotum densely, minutely, shallowly punctate; with arched row of coarse punctures on posterior fifth, and sparse coarse punctures on anterior quarter close to row of coarse punctures; with abundant white pubescence partially obscuring integument on sides of posterior 3/4 and entire posterior sixth; with longitudinal white pubescent band on center of posterior 3/5, not obscuring integument, gradually widened toward posterior region, and abundant yellowish pubescence not obscuring integument on remaining surface, yellowish pubescence slightly distinct depending on viewing angle; with a few long, erect dark-brown setae close to lateral tubercles of prothorax. Sides of prothorax coarsely, sparsely punctate close to lateral tubercles, subsmooth on remaining surface; with abundant white pubescence not obscuring integument, pubescence denser anteriorly close to prosternum. Prosternum with abundant white pubescence not obscuring integument, pubescence dense laterally. Prosternal process sublamiform centrally; with abundant white pubescence not obscuring integument basally, subglabrous on remaining surface, except whitish pubescence on center close to apical margin. Mesoventrite with abundant yellowish-white pubescence not obscuring integument. Mesanepisterna with dense pubescence, yellowish basally, gradually yellowish-white toward apex; mesepimera with abundant yellowish-white pubescence partially obscuring integument, less dense than on mesanepisterna. Mesoventral process narrow, gradually narrowed on basal half, subparallel-sided on apical half; apex 0.16 times mesocoxal width; with sparse yellowish-white pubescence. Metanepisterna with dense yellowish-white pubescence. Sides of metaventrite with dense yellowish-white pubescence and remaining surface with abundant white pubescence not obscuring integument, except glabrous metathoracic discrimen. Scutellum with moderately abundant yellowish-white pubescence centrally, and sparse yellowish pubescence laterally.

Elytra. – Abundantly, coarsely punctate on anterior 4/5, punctures finer and sparser on apical fifth; apex obliquely truncate; anterior 4/7 with dense, wide, longitudinal yellowish-white pubescent band, narrowed and surrounding scutellum on anterior sixth, acute on its apex; with dense, oblique and ascending, wide yellowish-white pubescent band on anterior quarter, from dorsal longitudinal pubescent band to near epipleural margin, pubescent whiter toward epipleural margin; with dense, wide yellowish-white pubescent band on anterior before middle, from longitudinal pubescent band to epipleural margin, oblique and ascending dorsally from longitudinal pubescent band to middle of dorsal surface, then slightly oblique and descending toward epipleural margin, pubescence gradually whiter toward epipleural margin; with dense, wide, transverse white pubescent band on posterior third, from suture to epipleural margin; with narrow white

pubescent band close to suture and posterior margin of transverse white pubescent band, and dense, white pubescence on remaining apical region of dorsal surface; remaining surface with abundant but slightly conspicuous yellowish-brown pubescence not obscuring integument; with sparse, long, erect dark-brown setae interspersed basally and moderately abundant, long, erect dark-brown setae on posterior quarter.

Legs. – Femora with abundant whitish pubescence not obscuring integument; with long, erect dark brown setae interspersed on dorsal surface of club of profemora, and dorsal and lateral surfaces of club of meso- and metafemora. Dorsal surface of protibiae and dorsal and lateral surfaces of meso- and metatibia with dense white pubescence, except dorsal sulcus of mesotibiae with dense, short, erect dark-brown setae; remaining surface with yellowish pubescence not obscuring integument, pubescence bristly toward apex; protibiae with long, erect dark-brown setae interspersed dorsally and meso- and metatibiae with long, erect dark-brown setae interspersed dorsally and laterally. Dorsal surface of protarsomeres I with abundant whitish pubescence not obscuring integument and remaining tarsomeres with sparse yellowish pubescence; sides of tarsomeres I–III and apical third of V with long dark-brown setae laterally. Dorsal surface of meso- and metatarsomeres with sparse yellowish pubescence. Metatarsomere I 1.9 times II–III together.

Abdomen. – Ventrites with abundant white pubescence, denser on posterior region of sides of ventrites 1–3; apical third of ventrite 5 with long, erect dark-brown setae interspersed; ventrite 5 slightly longer than 4; apical margin of ventrite 5 concave.

Female (Fig. 36–37). – Similar to males, differing by the shorter antennae, 2.7 times elytral length, reaching elytral apex at apex of antennomere V, and abdominal ventrite 5 almost as long as 3–4 together, with apex truncate and slightly emarginate centrally.

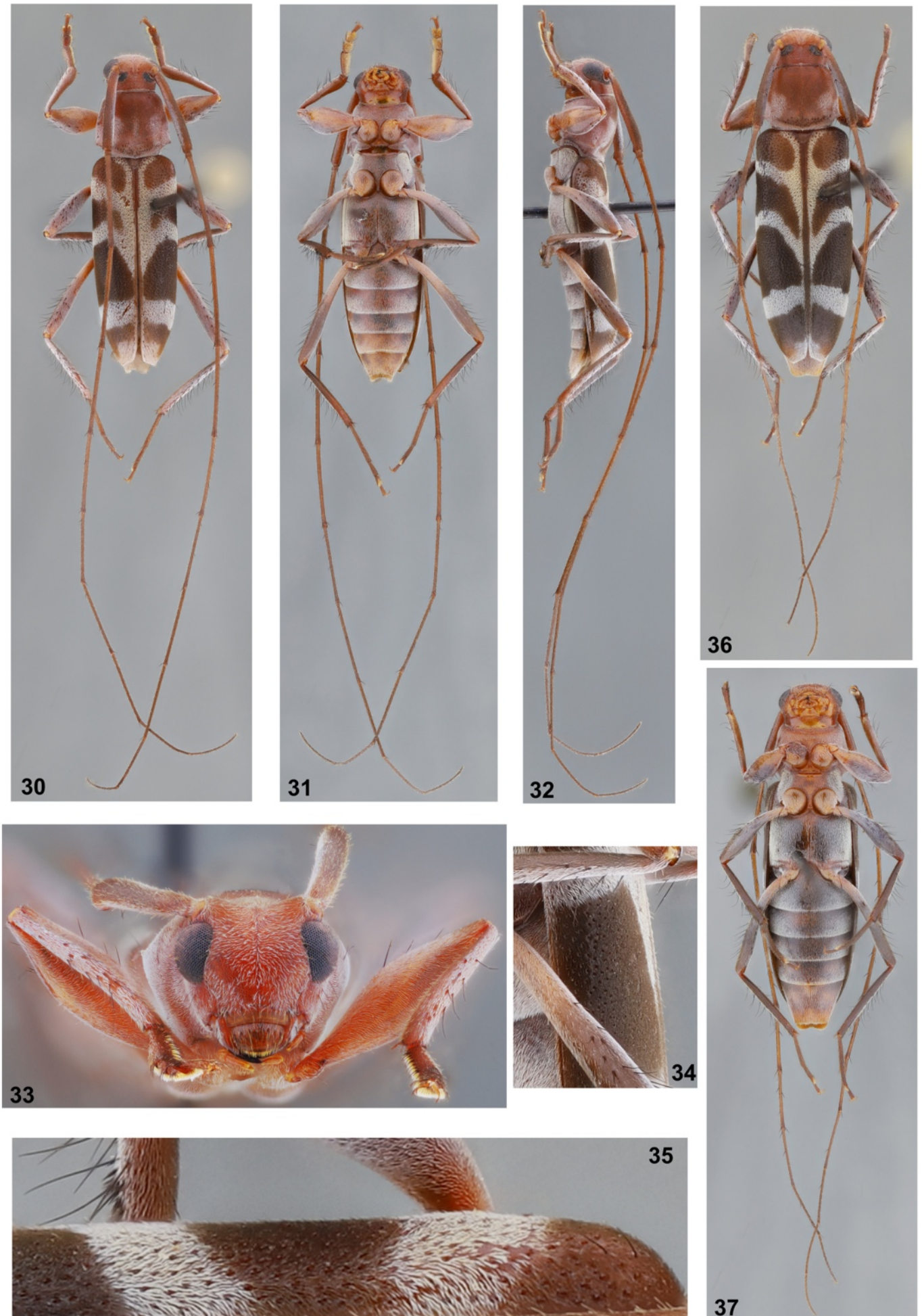
Variation. – Prosternum, prosternal process, and wide central area of mesoventrite entirely orangish; anteroventral area of metaventrite orangish; elytra mostly dark brown on anteroventral third or half brown; meso- and metafemoral club entirely dark brown; meso- and metatibiae entirely dark brown; tarsomeres I reddish brown; tarsomeres II–V mostly brown; abdominal ventrites 1–4 mostly blackish; abdominal ventrite 5 dark brown with irregular orangish areas on basal 2/3, orangish on apical third; longitudinal yellowish-white pubescent band on dorsal surface of elytra fused with posterior transverse white pubescence band.

Dimensions (mm) (holotype ♂ / paratypes ♂ / paratypes ♀).

- Total length, 9.60 / 8.40–8.50 / 8.70–8.90;
- Prothoracic length, 2.05 / 1.75–1.80 / 1.60–1.65;
- Anterior prothoracic width, 1.50 / 1.20–1.30 / 1.20–1.40;
- Posterior prothoracic width, 1.70 / 1.45–1.50 / 1.35–1.55;
- Maximum prothoracic width, 2.30 / 1.85–2.00 / 1.90–2.05;
- Humeral width, 2.50 / 2.20–2.25 / 2.20–2.35;
- Elytral length, 6.40 / 5.15–5.60 / 5.40–6.00.

Etymology. – The specific epithet is dedicated to Jennifer De Almeida of the Insectarium de Montréal (Canada) for her collaboration and many professional courtesies.

Remarks. – *Lasiolepturges dealmeidae* sp. nov. is similar to *L. zikani* Melzer, 1928 (Fig. 38–41), but differs as follows: antennae distinctly longer in both sexes, especially in males (longer than 3.5 times elytral length); antennomere III in males distinctly longer than humeral width; lateral tubercles of prothorax distinct; and elytra without erect setae on wide central area (Fig. 34–35). In *L. zikani*, the antennae are shorter in both sexes (Fig. 38) (in males, distinctly shorter than 3.0 times elytral length), antennomere III in males about as long as humeral width, lateral tubercles of prothorax absent or slightly distinct, and elytra have erect setae throughout (Fig. 39–41).



Figures 30-37. *Lasiolepturges dealmeidae* sp. nov.

30-35. Holotype ♂. **30.** Dorsal habitus. **31.** Ventral habitus. **32.** Lateral habitus. **33.** Head, frontal view. **34.** Elytron, lateral view, detail. **35.** Elytron, dorsal view, detail. **36-37.** Paratype ♀. **36.** Dorsal habitus. **37.** Ventral habitus.

Acknowledgments

We express our sincere thanks to Alain Drumont (ISNB) for sending the photographs of the holotype of *Macrodonia batesi* Lameere, 1912, and to Anton Kozlov (Russia, Moscow) for the photographs of the specimens of *Macrodonia dejeanii* Gory, 1839 from Colombia. We also thank Ronald D. Cave (Florida, U.S.A.) for reviewing the manuscript.

References

- Bates H.W., 1885. – Supplement. In: Godman, F.D. & Salvin, O. (Eds.), *Biologia Centrali-Americana, Insecta, Coleoptera*. Vol. 5. Taylor and Francis, London, pp. 249-436.
- Bates H.W., 1892. – Additions to the Longicornia of Mexico and Central America, with remarks on some of the previously recorded species. *The Transactions of the Entomological Society of London*, 1892: 143-183.
- Blanchard C.E., 1848. – Note sur un genre d'insectes de la famille des prionides. *Annales des Sciences Naturelles*, (3)9: 210.
- Bleuzen P., 1994. – Les Coléoptères du Monde. Prioninae. 1: Macrodonitini (*Macrodonia*, *Chalcoprionus*, *Ancistrotus*, *Acanthinodera*, *Acalodegma*), Prionini (*Titanus*, *Braderochus*). *Sciences Nat*, 21: 1-92.
- Bousquet Y., 2016. – Litteratura Coleopterologica (1758–1900): a guide to selected books related to the taxonomy of Coleoptera with publication dates and notes. *ZooKeys*, 583: 1-776.
- Chemsak J.A. & Linsley E.G., 1982. – *Checklist of Cerambycidae. The Longhorned Beetles. Checklist of the Cerambycidae and Disteniidae of North America, Central America and the West Indies (Coleoptera)*. Plexus Publ., Medford, New Jersey, 138 pp.
- Eya B.K., 2019. – Revision of the genus *Deltaspis* Audinet-Serville, 1834 with systematic analysis and new taxa of Trachyderini with emarginate-truncate mandibles (Insecta: Coleoptera: Cerambycidae). *Zootaxa*, 4713(1): 1-62.
- Gory H.L., 1839. – Note monographique sur le genre *Macrodonia*, établi par M. Audinet-Serville dans sa nouvelle classification des longicornes publié dans les Annales de la Société entomologique, t. 1. *Annales de la Société Entomologique de France*, (1)8: 124-128.
- Kolbe H.J., 1894. – Beiträge zur Kenntnis der Longicornier. *Stettiner Entomologische Zeitung*, 55: 11-50.
- Lameere A.A., 1904. – Révision des prionides (Dixième mémoire - Titanines). *Annales de la Société Entomologique de Belgique*, 48: 309-352.
- Monné M.A., 2005. – Catalogue of the Cerambycidae (Coleoptera) of the Neotropical Region. Part I. Subfamily Cerambycinae. *Zootaxa*, 946: 1-765.



Figures 38-41. *Lasiolepturges zikani* Melzer, 1928, ♂ (MZSP 55322) from Brazil (Rio de Janeiro, Itatiaia).

38. Dorsal habitus. 39. Lateral habitus. 40. Elytron, dorsal view, detail. 41. Elytron, lateral view, detail.

- Monné M.A., 2023a. – Catalogue of the Cerambycidae (Coleoptera) of the Neotropical region. Part I. Subfamily Cerambycinae. Available from: <https://cerambycids.com/catalog/> (Last accessed 8 June 2023.)
- Monné M.A., 2023b. – Catalogue of the Cerambycidae (Coleoptera) of the Neotropical region. Part II. Subfamily Lamiinae. Available from: <https://cerambycids.com/catalog/> (Last accessed 8 June 2023.)
- Monné M.A., 2023c. – Catalogue of the Cerambycidae (Coleoptera) of the Neotropical region. Part III. Subfamilies Lepturinae, Nedydalinae, Parandrinae, Prioninae, Spondylidinae and Families Oxypeltidae, Vesperidae and Disteniidae. Available from: <https://cerambycids.com/catalog/> (Last accessed 8 June 2023.)
- Olivier A.G., 1795. – *Entomologie, ou histoire naturelle des insectes, avec leurs caractères génériques et spécifiques, leur description, leur synonymie, et leur figure enluminée*. Coléoptères. Desray, Paris, vol. 4, pp. 1-519.
- Pirk J., 2023. – Prioninae of the World. Available from: <https://www.prioninae.eu/> (Last accessed 8 June 2023.)
- Santos-Silva A., Nearn E.H. & Swift I.P., 2016. – Revision of the American species of the genus *Prionus* Geoffroy, 1762 (Coleoptera, Cerambycidae, Prioninae, Prionini). *Zootaxa*, 4134(1): 1-103.
- Schiefer T.L., 2022. – Reevaluation of the subgeneric classification of the North American species of *Prionus* Geoffroy (Coleoptera: Cerambycidae: Prioninae: Prionini), with a revision of the subgenus *Neopolyarthron* Semenov and notes on *Prionus* (*Antennalia*) *fissicornis* Haldeman and *Prionus* (*Prionus*) *californicus* Motschulsky. *Transactions of the American Entomological Society*, 148: 335-504.
- Schönherr C.J., 1817. – *Synonymia Insectorum, oder: Versuch einer Synonymia aller bisher bekannten Insecten; nach Fabricii Systema Eleutheratorum andc. geordnet. Mit Berichtigungen und Anmerkungen, wie auch Beschreibungen neuer Arten und illuminirten Kupfern. Erster Band. Eleutherata oder Käfer*. Volume 3. Lewerentz, Skara, xi + 506 pp.
- Tavakilian G.L. & Chevillotte H., 2022. – Titan: base de données internationales sur les Cerambycidae ou Longicornes. Available from: <http://titan.gbif.fr/> (Last accessed 8 June 2023.)
- Toledo V.H., 2005. – New distributional records for Mexican Cerambycidae (Coleoptera). *The Coleopterists Bulletin*, 59(4): 415-422.

Author contributions ¹

- Project initiator. – LT
 Scientific coordinator. – AS
 Publisher Correspondence. – LT
 Writing the article. – AS
 Article proofreading. – LT & AS
 Bibliographic work. – AS
 Material study. – LT & AS
 Author of the figures. – AS

¹ LT = Stéphane Le Tirant - AS = Antonio Santos-Silva

Résumé

Le Tirant S. & Santos-Silva A., 2023. – Description de deux nouveaux Cerambycidae (Coleoptera) et discussion sur *Macrodonia crenata* et *Deltaspis cyanipes*. *Faunitaxys*, 11(44): 1 – 13.

Les variations chromatiques et morphologiques de *Macrodonia crenata* (Olivier, 1795) sont décrites. Le nombre de spécimens dans la description originale de *Deltaspis auromarginata* var. *cyanipes* Bates, 1885 est discuté, et des commentaires supplémentaires sur l'espèce sont fournis. Deux nouvelles espèces sont décrites : *Prionus* (*Prionus*) *hectori* sp. nov., du Mexique et *Lasiolepturges dealmeidae* sp. nov. du Panama.

Mots-clés. – Coleoptera, Cerambycidae, Prioninae, Lamiinae, longicornes, *Prionus*, *Lasiolepturges*, espèces nouvelles, taxonomie, description, Mexique, Panama, Région néotropicale.

Derniers articles publiés

- Bate R. & Bate M. D., 2023. – New synonymies and distribution records of some longhorn beetles (Coleoptera, Cerambycidae) occurring in South Africa. *Faunitaxys*, 11(37): 1 – 9. [https://doi.org/10.57800/faunitaxys-11\(37\)](https://doi.org/10.57800/faunitaxys-11(37))
- Háva J. & Coache A., 2023. – *Anthrenus* (*Anthrenodes*) *sarahae* sp. nov., a new species from Benin (Coleoptera: Dermestidae). *Faunitaxys*, 11(38): 1 – 3. [https://doi.org/10.57800/faunitaxys-11\(38\)](https://doi.org/10.57800/faunitaxys-11(38))
- Keith D. & Coache A., 2023. – Sur *Phaeochrous thomensis* Arrow, 1909 (Coleoptera, Scarabaeoidea, Hybosoridae). *Faunitaxys*, 11(39): 1 – 5. [https://doi.org/10.57800/faunitaxys-11\(39\)](https://doi.org/10.57800/faunitaxys-11(39))
- Vlasak J. & Santos-Silva A., 2023. – Cerambycidae (Coleoptera) from Ecuador and Central America: new species and new country records. *Faunitaxys*, 11(40): 1 – 12. [https://doi.org/10.57800/faunitaxys-11\(40\)](https://doi.org/10.57800/faunitaxys-11(40))
- Gouverneur X. & Chemin G., 2023. – Description d'une nouvelle espèce du genre *Erythresthes* Thomson, 1864 du Laos (Coleoptera, Cerambycidae). *Faunitaxys*, 11(41): 1 – 3. [https://doi.org/10.57800/faunitaxys-11\(41\)](https://doi.org/10.57800/faunitaxys-11(41))
- Devesa S. & Vlasak J., 2023. – New species and new country records in Neotropical Cerambycidae (Coleoptera). *Faunitaxys*, 11(42): 1 – 10. [https://doi.org/10.57800/faunitaxys-11\(42\)](https://doi.org/10.57800/faunitaxys-11(42))
- Drumont A., Komiya Z., Do C., Toan Phan Q., Constant J. & Ripaille C., 2023. – Revision of the genus *Hystatoderes* Lameere, 1917 (Part I): species from Vietnam (Coleoptera, Cerambycidae, Prioninae, Anacolini). *Faunitaxys*, 11(43): 1 – 11. [https://doi.org/10.57800/faunitaxys-11\(43\)](https://doi.org/10.57800/faunitaxys-11(43))

Faunitaxys

Volume 11, Numéro 44, Juin 2023

SOMMAIRE

Description de deux nouveaux Cerambycidae (Coleoptera) et discussion sur *Macrodonia crenata* et *Deltaspis cyanipes*.

Stéphane Le Tirant & Antonio Santos-Silva 1 – 13

CONTENTS

Description of two new species of Cerambycidae (Coleoptera) and notes on *Macrodonia crenata* and *Deltaspis cyanipes*.

Stéphane Le Tirant & Antonio Santos-Silva 1 – 13



Illustration de la couverture :

Forêt de Durango, Mexique.

Crédits:

Antonio Santos-Silva : Fig. 1-7 & 16-41

Alain Drumont : Fig. 8-13 & 15

Anton Kozlov : Fig. 14

Alex Bordeline : Couverture