



HAL
open science

Temporal Brain Networks Dataset

Aurora Rossi, Emanuele Natale, Samuel Deslauriers-Gauthier

► **To cite this version:**

Aurora Rossi, Emanuele Natale, Samuel Deslauriers-Gauthier. Temporal Brain Networks Dataset. NeuroMod meeting 2023, Jun 2023, Antibes, France. hal-04130380

HAL Id: hal-04130380

<https://hal.science/hal-04130380v1>

Submitted on 15 Jun 2023

HAL is a multi-disciplinary open access archive for the deposit and dissemination of scientific research documents, whether they are published or not. The documents may come from teaching and research institutions in France or abroad, or from public or private research centers.

L'archive ouverte pluridisciplinaire **HAL**, est destinée au dépôt et à la diffusion de documents scientifiques de niveau recherche, publiés ou non, émanant des établissements d'enseignement et de recherche français ou étrangers, des laboratoires publics ou privés.

Temporal Brain Networks Dataset

Aurora Rossi¹, Samuel Deslauriers-Gauthier², Emanuele Natale¹

UNIVERSITÉ
CÔTE D'AZUR

ÉCOLE UNIVERSITAIRE DE RECHERCHE
SYSTÈMES NUMÉRIQUES
POUR L'HUMAIN



Inria

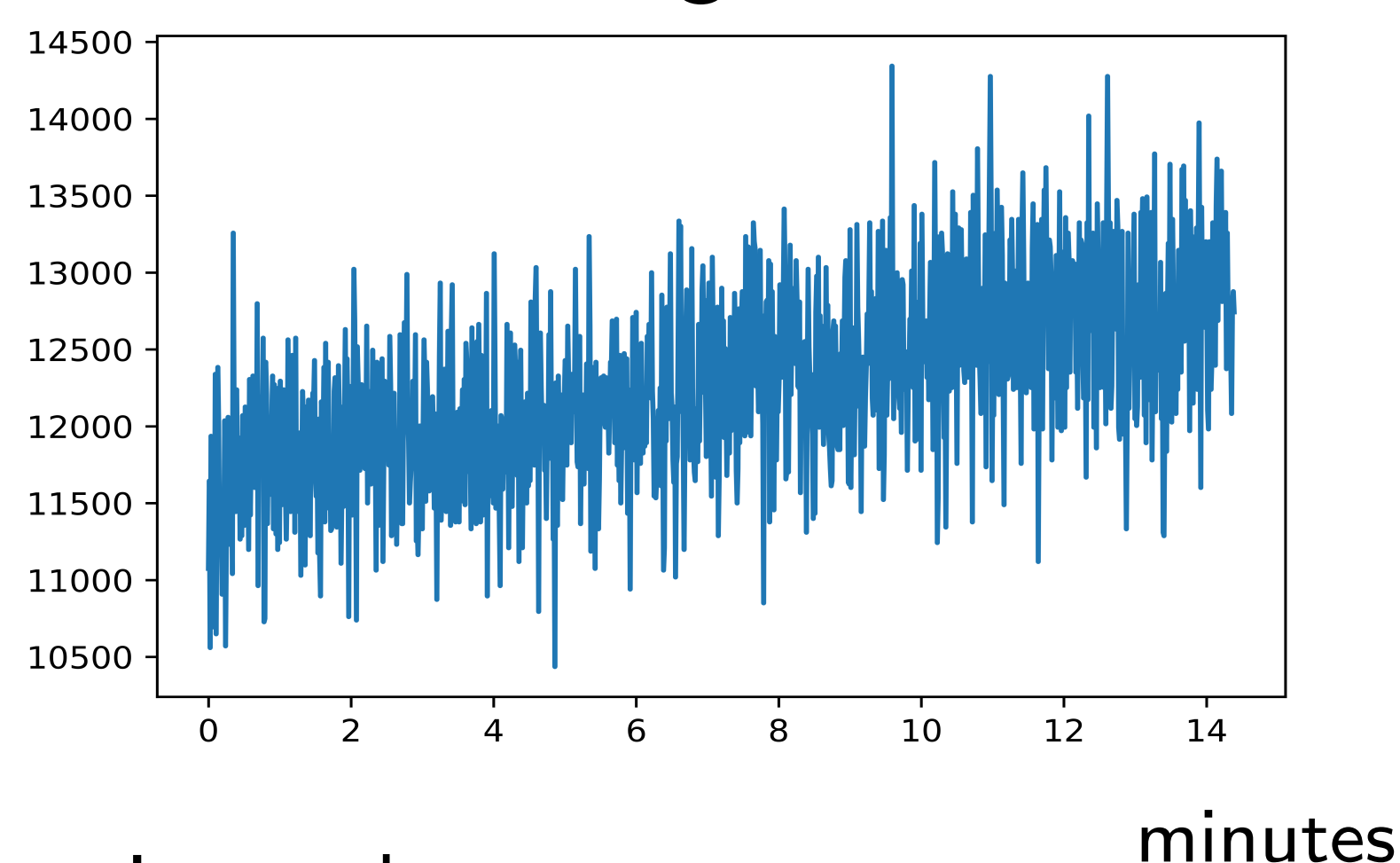
¹ Université Côte d'Azur, COATI, INRIA, CNRS, I3S, France

² CRONOS, INRIA Centre at Université Côte d'Azur, France

Mail: aurora.rossi@inria.fr

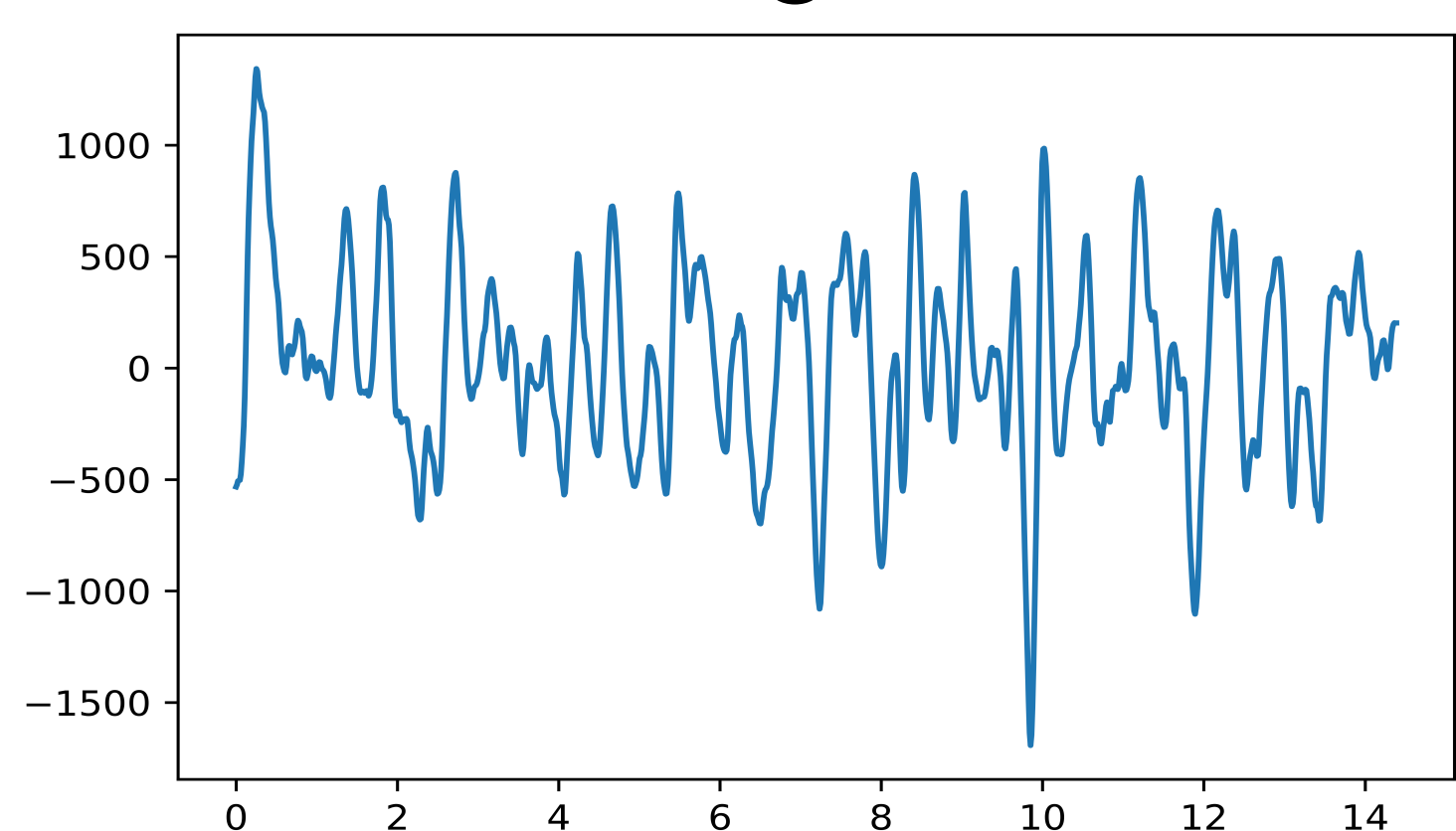
Pipeline

BOLD signal of a voxel



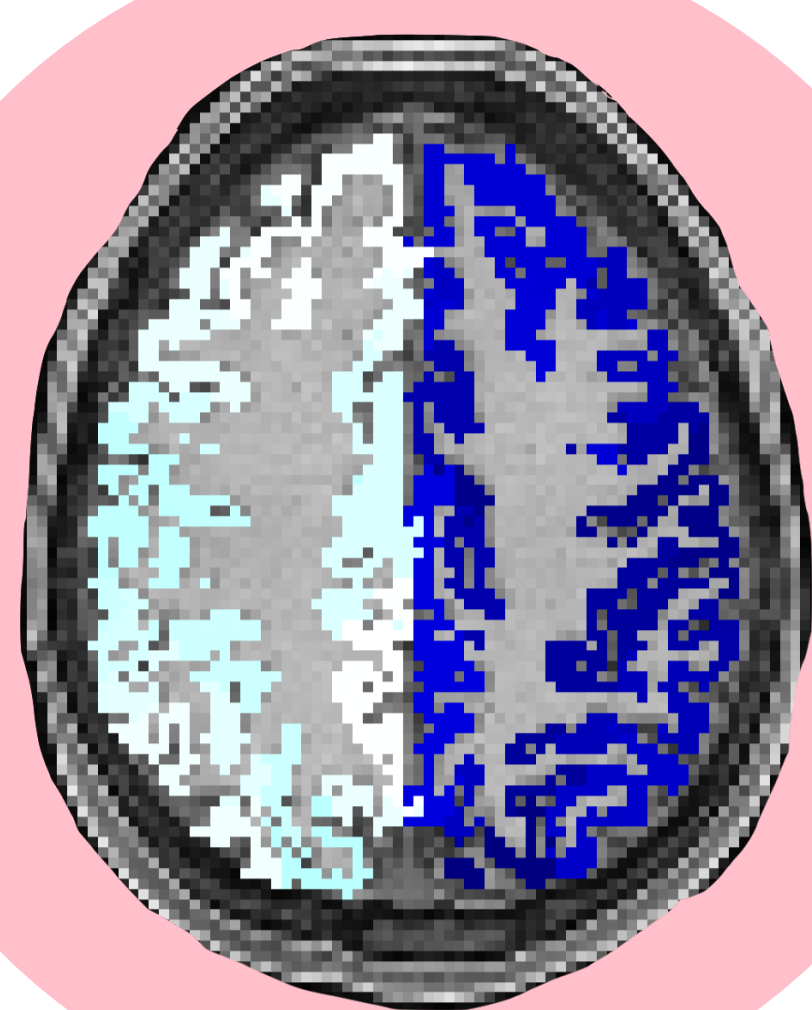
Linear Regression and Bandpass Filtering to remove patient respiratory and cardiac movements

Clean BOLD signal of a voxel

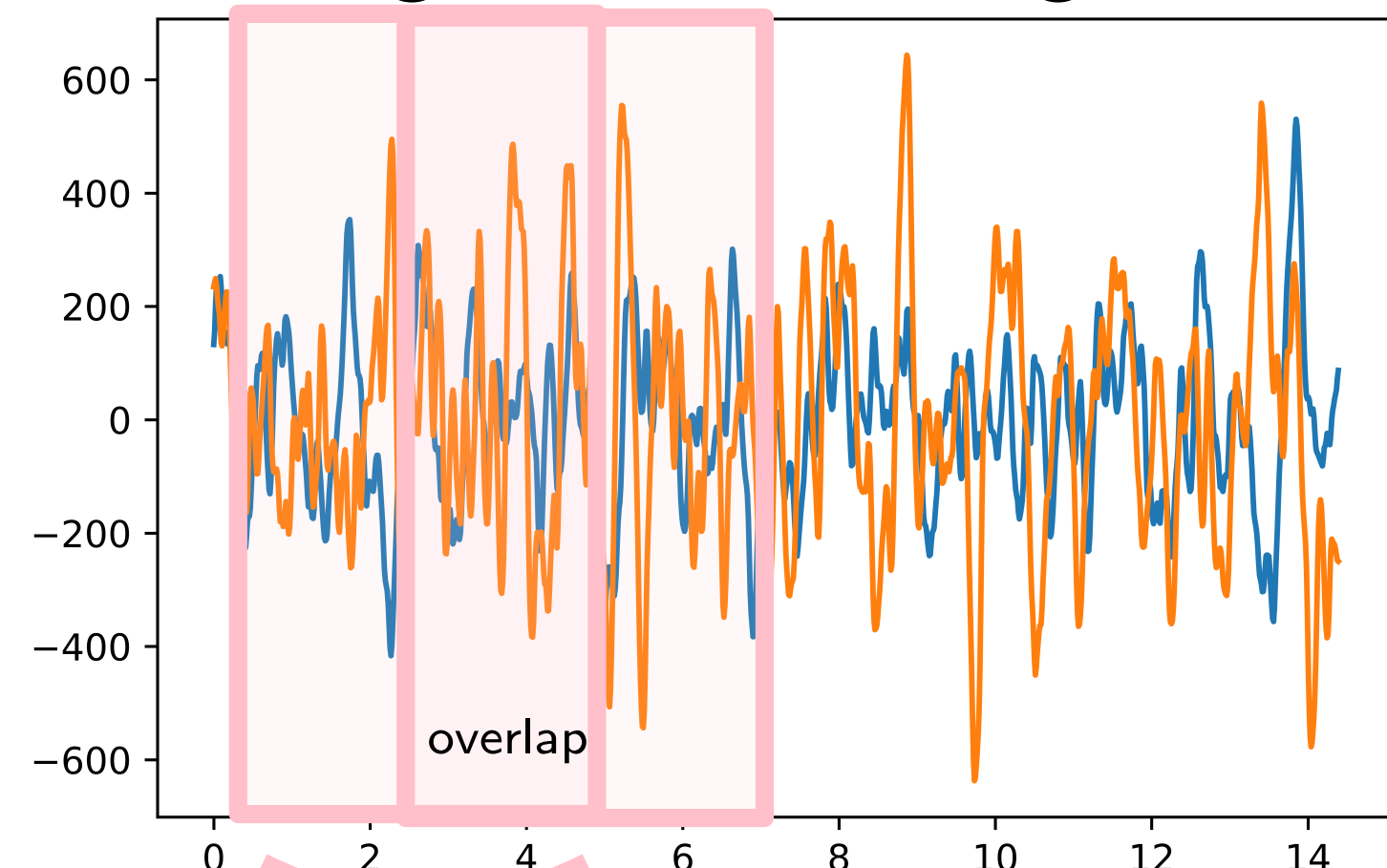


minutes

Selecting brain regions using an atlas

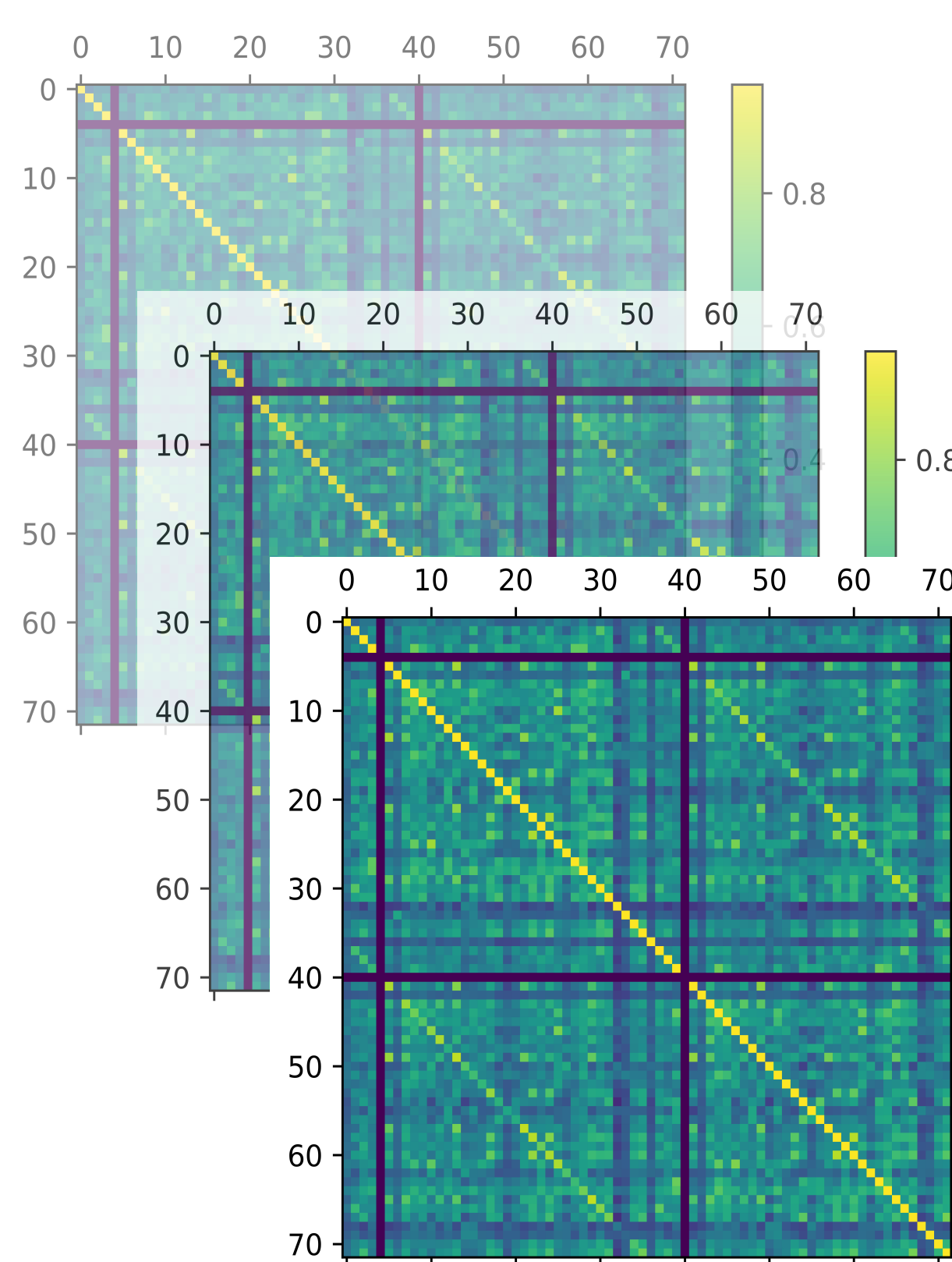


BOLD signal of two regions



minutes

Sliding windows method



Computing correlation coefficient within each window

Temporal
Brain
Network

Dataset

The dataset contains a collection of temporal brain networks.

The networks are obtained from **resting-state fMRI** data of 1047 subjects from the Human Connectome Project (HCP).

Networks are undirected and weighted. The number of nodes is fixed over time, instead the weights of the edges change.

- 100
 - 100.zip.001 (1.0 GB)
 - 100.zip.002 (445.3 MB)
- 200
- 300
- 400
- 500
- 600
- id_subjects.txt (7.2 KB)
- README.txt (1.3 KB)

The pipeline parameters

- Window size: 60 seconds
- Window overlap: 30 seconds
- Correlation: Pearson
- Atlas: Schaefer of different size from 100 to 600

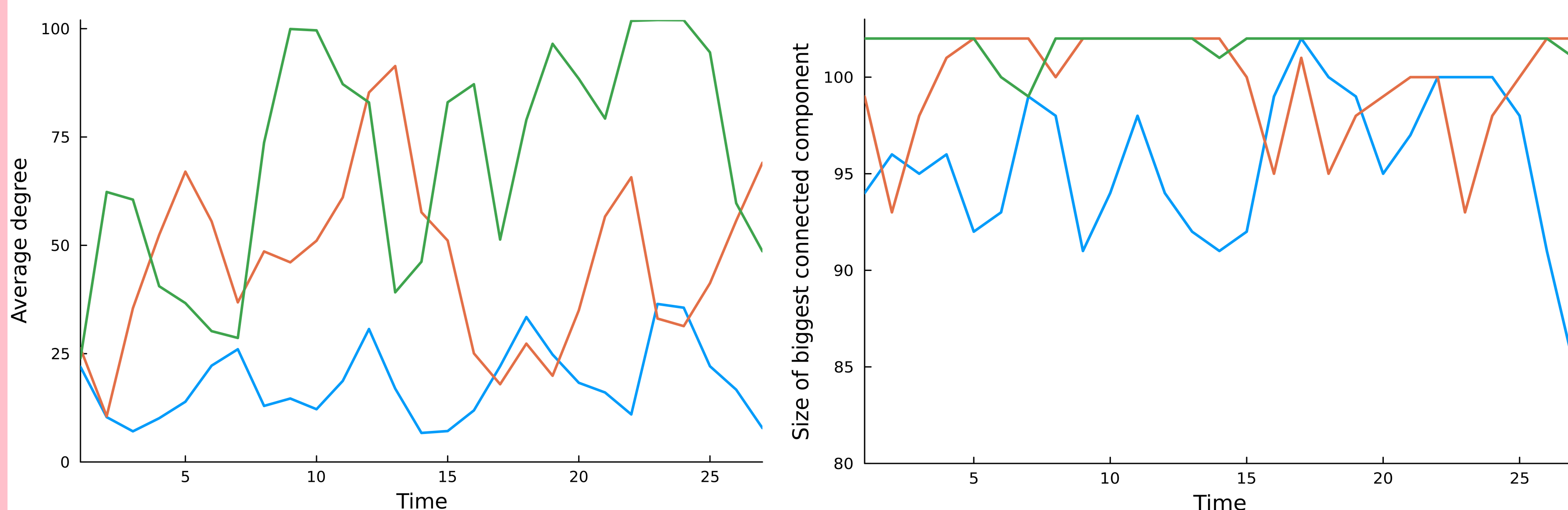
Structure

The dataset is organized as follows:

- The file **id_subjects.txt** contains the list of subject IDs, which are a selection of the HCP dataset
- Each folder contains a network for each subject in a **.txt** file. The networks are compressed into several **.zip files of 1 Gb** each to facilitate downloading
- The first line of each **.txt** file contains the number of nodes and the number of snapshots of the network divided by a space. The following lines contain the list of edges of the network in the form **i,j,t,w** meaning that the edge between node **i** and node **j** at time **t** has weight **w**

Examples of dataset analysis

Examples of measures computed on some subjects taken from the dataset: evolution of the average degree and the size of the biggest connected component over different snapshots of three subject using the atlas of dimension 100 and setting the threshold to 0.75



Acknowledgments and references

Data were provided by the Human Connectome Project, WU-Minn Consortium (Principal Investigators: David Van Essen and Kamil Ugurbil; 1U54MH091657) funded by the 16 NIH Institutes and Centers that support the NIH Blueprint for Neuroscience Research; and by the McDonnell Center for Systems Neuroscience at Washington University.

The authors are grateful to the OPAL infrastructure from Université Côte d'Azur for providing resources and support.

This work has been supported by the French government, through the UCA DS4H Investments in the Future project managed by the National Research Agency (ANR) with the reference number ANR-17-EURE-0004.

Woolrich MW, Ripley BD, Brady JM, and Smith SM. (2001). Temporal autocorrelation in univariate linear modelling of fMRI data. *NeuroImage* 14(6):1370-1386.

Matthew F. Glasser, Stamatiou N. Sotiropoulos, J. Anthony Wilson, Timothy S. Coalson, Bruce Fischl, Jesper L. Andersson, Junqian Xu, Saad Jbabdi, Matthew Webster, Jonathan R. Polimeni, David C. Van Essen, and Mark Jenkinson (2013). The minimal preprocessing pipelines for the Human Connectome Project. *Neuroimage* 80: 105-124.

Conclusion

The limited availability of public datasets on temporal brain networks has led us to release a dataset consisting of temporal brain networks derived from 1047 subjects of different sizes.

This dataset is presented in an easy-to-read format to facilitate analysis and interpretation in the fields of neuroscience and computer science.

