

Morts Pour la France
A Database of French Fatalities of the Great War

Online Appendix

Victor Gay* Pauline Grosjean[†]

August 2023

A Supplementary Figures	2
B Supplementary Tables	14

*Department of Social and Behavioral Sciences, Toulouse School of Economics and Institute for Advanced Study in Toulouse, University of Toulouse Capitole, Toulouse, France. Email: victor.gay@tse-fr.eu.

[†]University of New South Wales (UNSW) and CEPR. Email: p.grosjean@unsw.edu.au.

A. Supplementary Figures



Figure A.1. Military Regions, Subdivisions, and Recruitment Bureaus in 1914

Notes: This figure displays the geography of military regions (thick black lines), subdivisions of military regions (thin black lines), and recruitment bureaus (red dots) in August 1914. Shapefiles from Gay (2020).

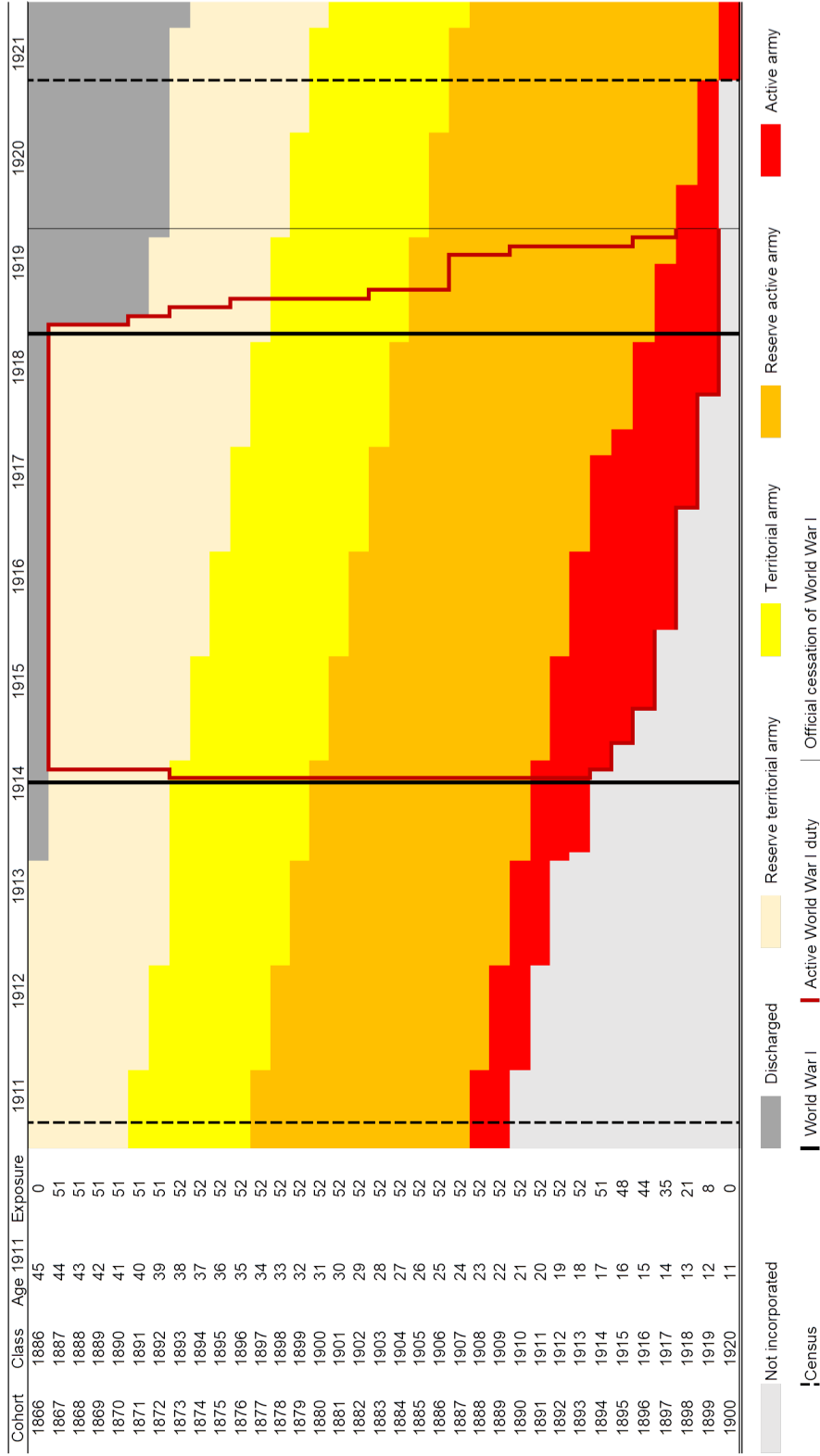


Figure A.2. Military Duties by Cohort (1911-1921)

Notes: This figure displays the evolution of military obligations by cohort between 1911 and 1921. *Class* corresponds to the year in which men were drafted, at age 20. *Exposure* corresponds to the number of months a cohort was actively engaged in World War I, between August 2, 1914, and October 23, 1919. The thick red line displays the timing of active World War I duty, which, for most cohorts, lasted beyond the Armistice of November 1918.

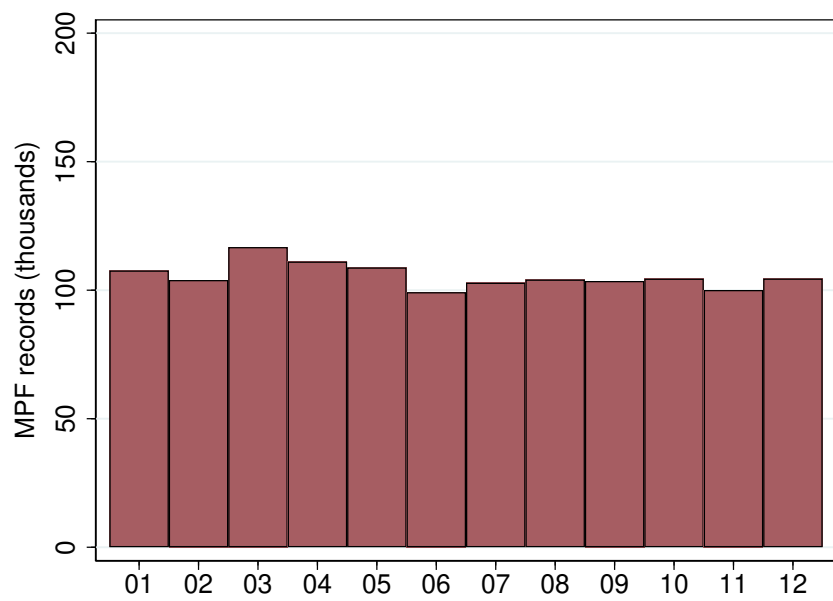


Figure A.3. Distribution of Months of Birth Among MPF Records

Notes: Each bar represents the number of MPF records that were born in a given month. This figure is based on 1,267,189 MPF records for which the month of birth is available.

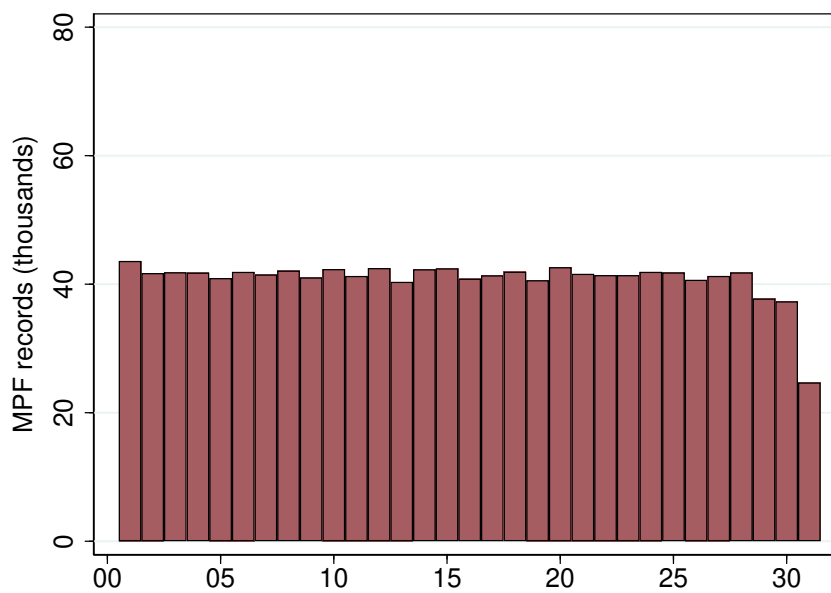


Figure A.4. Distribution of Days of Birth Among MPF Records

Notes: Each bar represents the number of MPF records that were born in a given day. This figure is based on 1,267,094 MPF records for which the day of birth is available.

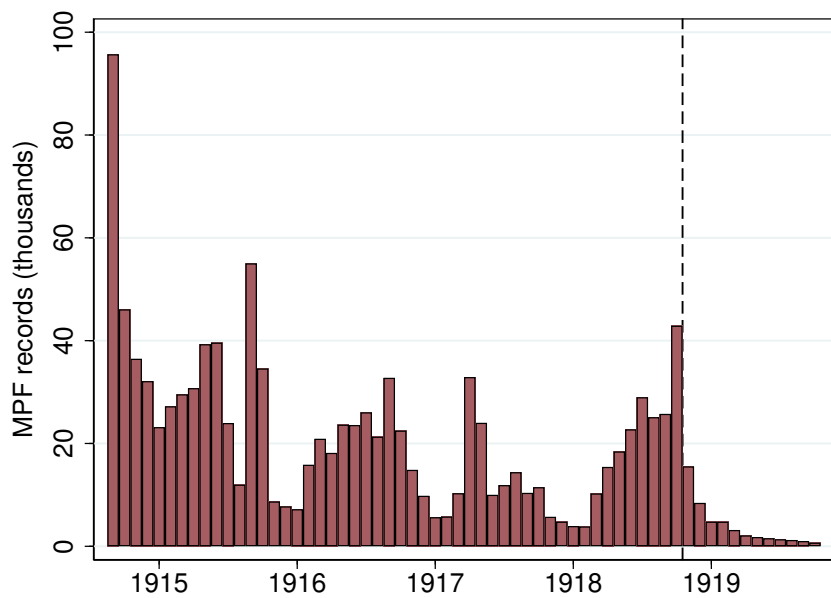


Figure A.5. Distribution of Monthly Deaths Among MPF Records

Notes: Each bar represents the number of MPF records that died in a given month. The vertical dashed line corresponds to the date of the Armistice on November 11, 1918. This figure is based on the 1,252,039 MPFs who died between August 2, 1914 and October 23, 1919.

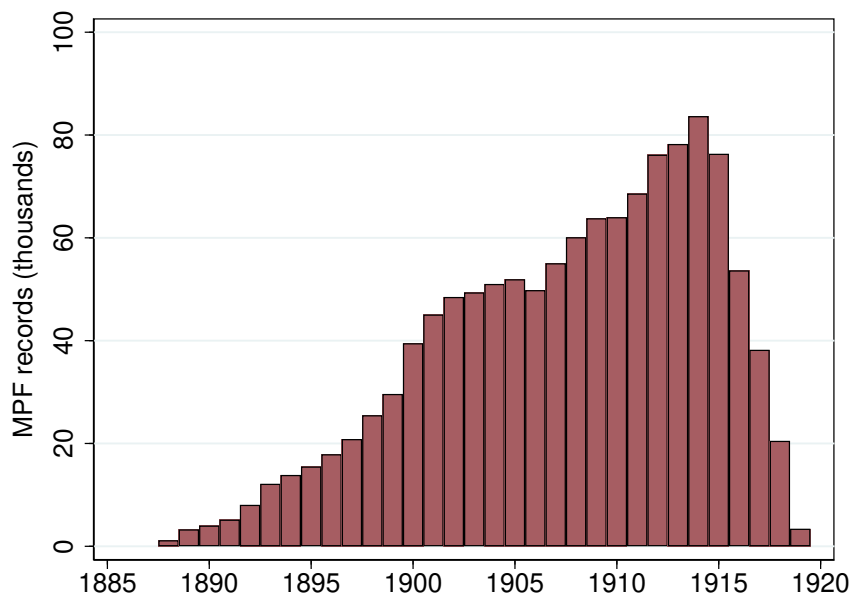


Figure A.6. Distribution of Recruitment Classes Among MPF Records

Notes: Each bar represents the number of MPF records that were recruited on a given year. This figure is restricted to the recruitment classes 1885–1920 and a total of 1,236,419 MPF records for which the recruitment class is available.

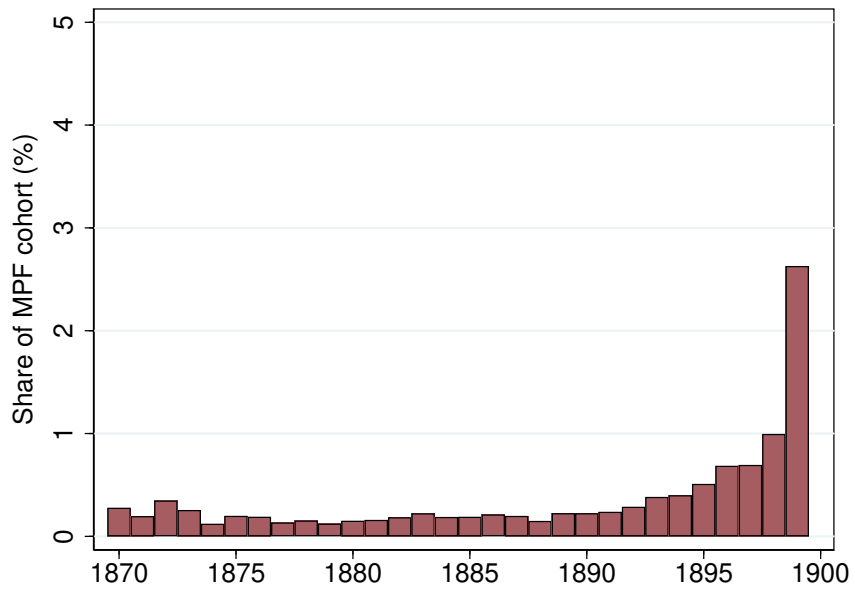


Figure A.7. Share of War Volunteers Across Cohorts

Notes: Each bar represents the share of MPF records of a given year of birth that was a war volunteer. This figure is restricted to the cohorts 1870–1899, for which there are at least one thousand MPF records. These represent 1,229,970 MPF records for which the recruitment class is available.

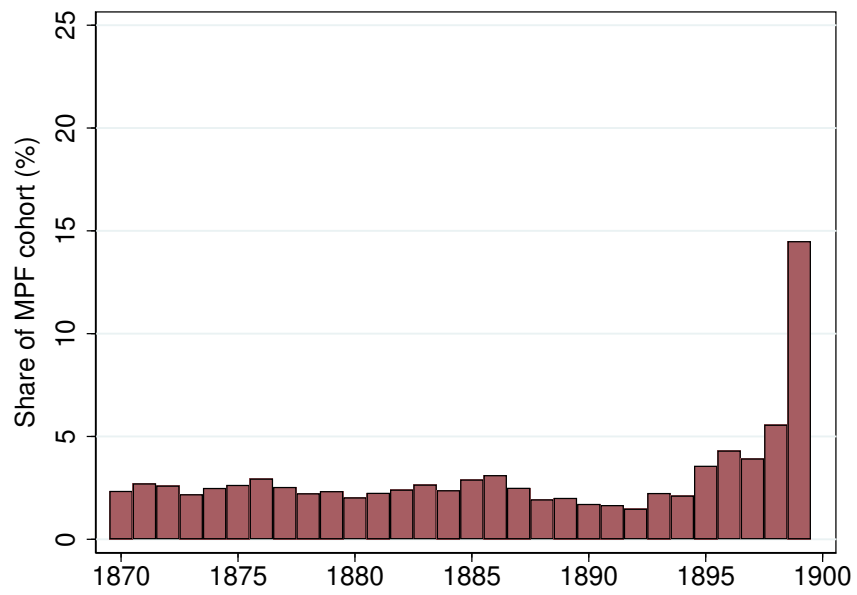


Figure A.8. Share of Early Recruits Across Cohorts

Notes: Each bar represents the share of MPF records of a given year of birth that was enrolled before age 20, outside of war volunteers. This figure is restricted to the cohorts 1870–1899, for which there are at least one thousand MPF records. These represent 1,229,970 MPF records.

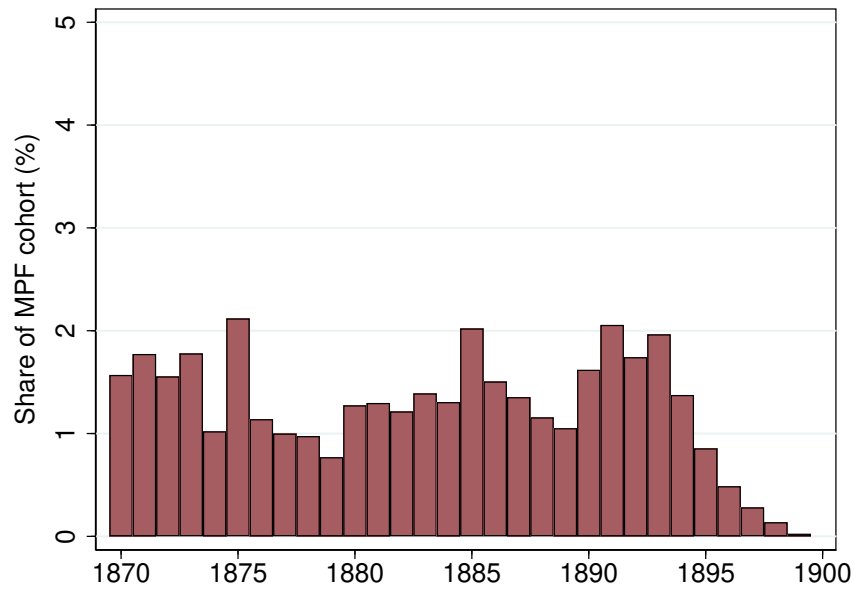


Figure A.9. Share of Exempted Across Cohorts

Notes: Each bar represents the share of MPF records of a given year of birth that was granted a deferment from military obligations at age 20. This figure is restricted to the cohorts 1870–1899, for which there are at least one thousand MPF records. These represent 1,229,970 MPF records.

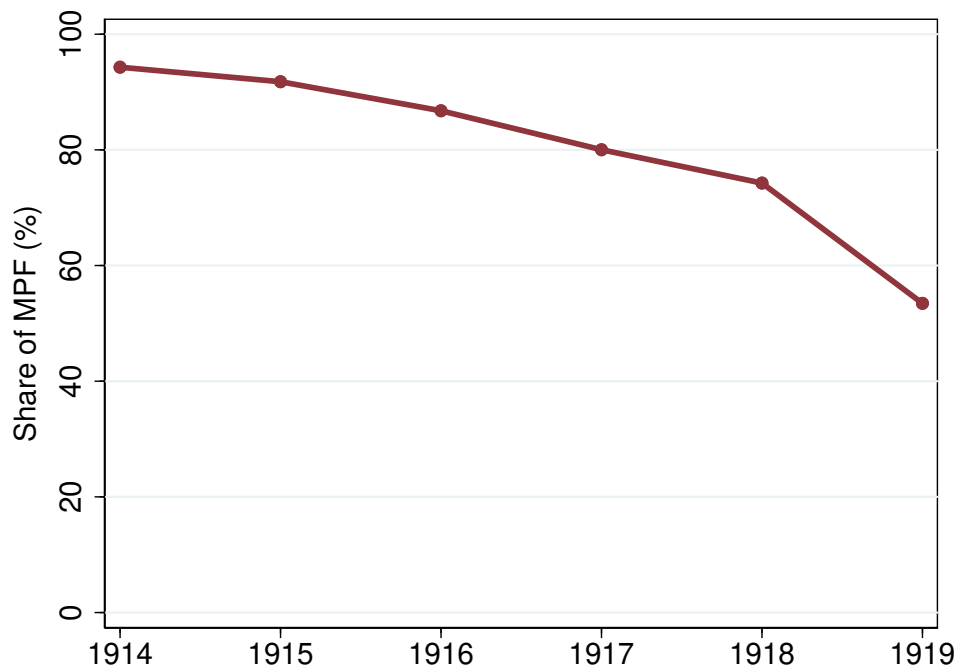


Figure A.10. Share of Infantry among MPFs

Notes: This figure displays the share of MPFs in the infantry who died before October 23, 1919, by year of death among MPF records for which the military unit and year of death are available. These represent 1,244,725 MPF records .

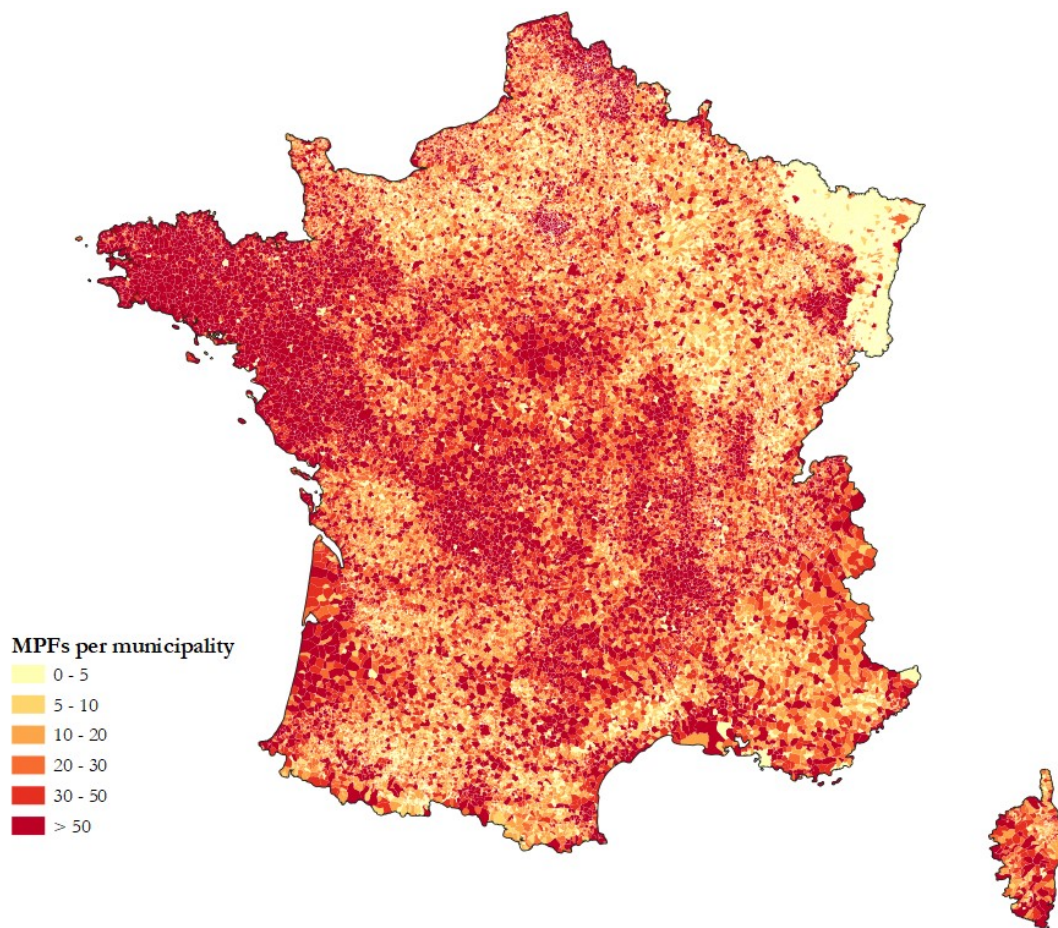


Figure A.11. Distribution of MPFs across Municipalities

Notes: This figure displays the distribution of MPFs across municipalities of birth in 2015 geography using IGN's (2015) Geofla shapefile. This figure is based on 1,258,553 MPF records for which the municipality of birth is available.

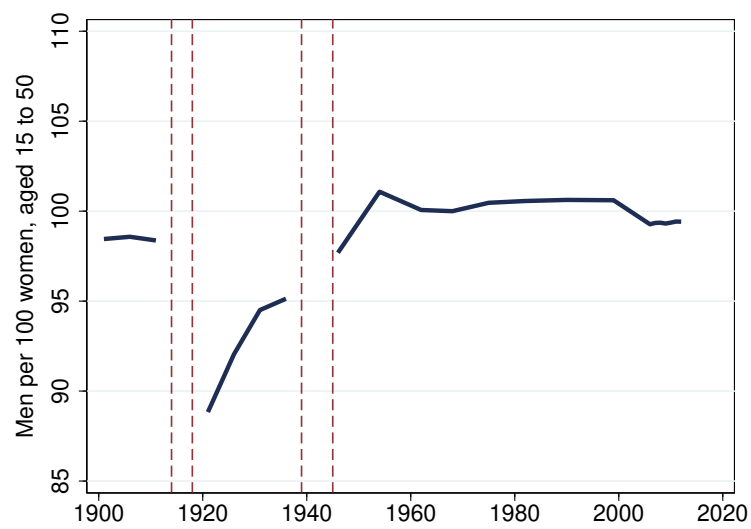


Figure A.12. Adult Sex Ratio (1900–2012)

Notes: This figure displays the sex ratio among French adults aged 15 to 50. Data are from the censuses 1901–2012. Vertical lines indicate WWI (1914–1918) and WWII (1939–1945). Figure based on Gay (2023, p. 5).

B. Supplementary Tables

Table B.1. Abbreviations to Archival Sources

Source	Title	Persistent identifier
<i>JOLD</i>	<i>Journal Officiel de la République Française, Lois et Décrets</i>	ark:/12148/cb34378481
<i>JOCD</i>	<i>Journal Officiel de la République Française, Débats Parlementaires</i>	ark:/12148/cb328020951
<i>JOS</i>	<i>Journal Officiel de la République Française, Débats Parlementaires, Sénat</i>	ark:/12148/cb34363182v
<i>BALD</i>	<i>Bulletin Annoté des Lois et Décrets</i>	ark:/12148/cb34426061p
<i>GGDO</i>	<i>Guerre de 14: Documents Officiels, Textes Législatifs et Réglementaires</i>	ark:/12148/cb318556850

Notes: This table provides the list of abbreviations used to discuss archival sources.

Table B.2. Supporting Administrative Sources

Date	Title	Persistent identifier	Reference
1873-07-24	Loi relative à l'organisation générale de l'armée	ark:/12148/bpt6k20922821	<i>JOLD</i> , 5(215), 5281-3
1905-05-21	Loi modifiant la loi du 15 juillet 1889 sur le recrutement de l'armée et réduisant à deux ans la durée du service dans l'armée active	ark:/12148/bpt6k6253433r/f1	<i>JOLD</i> , 37(81), 1869-90
1913-08-07	Loi modifiant les lois des cadres de l'infanterie, de la cavalerie, de l'artillerie et du génie, en ce qui concerne l'effectif des unités et fixant les conditions du recrutement de l'armée active et la durée du service dans l'armée active et ses réserves	ark:/12148/bpt6k63879116/f2	<i>JOLD</i> , 46(2), 7138-42
1913-09-22	Décret relatif à la répartition et à l'organisation des subdivisions territoriales	ark:/12148/bpt6k2023239d/f6	<i>JOLD</i> , 45(261), 8546-7
1913-12-22	Loi portant création d'une nouvelle région de corps d'armée sur le territoire de la France	ark:/12148/bpt6k2023327j	<i>JOLD</i> , 45(349), 11090-1
1913-12-31	Décret portant constitution d'une 21e région territoriale	ark:/12148/bpt6k2023336h/f4	<i>JOLD</i> , 46(2), 108-9

Table B.2—continued on next page

Table B.2. Supporting Administrative Sources—Continued

Date	Title	Persistent identifier	Reference
1915-07-02	Loi complétant, en ce qui concerne les actes de décès de militaires ou civils tués à l'ennemi ou morts dans des circonstances se rapportant à la guerre, les articles du code civil sur les actes de l'état civil	ark:/12148/bpt6k6349075j	<i>JOLD</i> , 47(184), 4653-4
1915-08-17	Loi assurant la juste répartition et une meilleure utilisation des hommes mobilisés et mobilisables	ark:/12148/bpt6k6351549k	<i>JOLD</i> , 47(223), 5795-7
1919-10-23	Loi relative à la date de cessation des hostilités	ark:/12148/bpt6k6383986p/f2	<i>JOLD</i> , 51(289), 11790
1919-10-25	Loi relative à la commémoration et à la glorification des morts pour la France au cours de la grande guerre	ark:/12148/bpt6k6383988h/f2	<i>JOLD</i> , 51(291), 11910
1919-03-31	Loi portant ouverture sur l'exercice 1919 de crédits provisoires concernant les dépenses militaires et les dépenses exceptionnelles des services civils et applicables au deuxième trimestre de 1919	ark:/12148/bpt6k63721729/f36	<i>JOLD</i> , 51(90), 3342-3
1922-02-28	Loi relative aux actes de décès des militaires et civils "morts pour la France"	ark:/12148/bpt6k64394769/f8	<i>JOLD</i> , 54(59), 2450

Table B.3. Soldiers Mobilized Outside of Armed Services (Thousands)

Date	War Factories	Mines	Administrations	Agriculture	Total
08-1914	0	0	408	0	408
07-1915	122	0	<i>n.a.</i>	0	<i>n.a.</i>
01-1916	339	0	<i>n.a.</i>	0	<i>n.a.</i>
07-1916	467	59	<i>n.a.</i>	0	<i>n.a.</i>
01-1917	515	65	357	0	937
07-1917	559	75	349	130	1,113
11-1917	511	110	354	220	1,195
01-1918	534	110	352	307	1,303
07-1918	493	96	353	301	1,243
11-1918	487	97	352	311	1,247

Notes: This table reports the number of soldiers mobilized outside of armed services in thousands between August 1914 and November 1918. *Mines* include navigation; *Administrations* include railway transportation; *Agriculture* does not include soldiers on agricultural leaves. *n.a.* denotes missing data. Data are from Fontaine (1924, 61). This table is from Boehnke and Gay (2022).

Table B.4. Most Frequent Surnames

Surname	Rank	Frequency	Share	Surname	Rank	Frequency	Share
MARTIN	1	5,281	0.42	ROUSSEAU	26	1,459	0.11
BERNARD	2	2,790	0.22	GUERIN	27	1,446	0.11
DURAND	3	2,611	0.21	GAUTHIER	28	1,442	0.11
PETIT	4	2,591	0.20	GARNIER	29	1,396	0.11
THOMAS	5	2,319	0.18	ANDRE	30	1,293	0.10
MOREAU	6	2,303	0.18	DUPONT	31	1,287	0.10
RICHARD	7	2,280	0.18	PERRIN	32	1,281	0.10
ROBERT	8	2,230	0.18	MORIN	33	1,274	0.10
DUBOIS	9	2,186	0.17	MERCIER	34	1,269	0.10
LAURENT	10	2,039	0.16	LEFEVRE	35	1,266	0.10
ROUX	11	1,873	0.15	CHEVALIER	36	1,239	0.10
MICHEL	12	1,828	0.14	ROBIN	37	1,216	0.10
SIMON	13	1,820	0.14	MARCHAND	38	1,186	0.09
BERTRAND	14	1,715	0.13	MATHIEU	39	1,183	0.09
FAURE	15	1,666	0.13	CLEMENT	40	1,166	0.09
LEROY	16	1,664	0.13	GIRAUD	41	1,162	0.09
DAVID	17	1,610	0.13	LEGRAND	42	1,140	0.09
GIRARD	18	1,602	0.13	HENRY	43	1,138	0.09
BLANC	19	1,586	0.12	BRUN	44	1,132	0.09
BONNET	20	1,577	0.12	ROUSSEL	45	1,116	0.09
FOURNIER	21	1,565	0.12	GAUTIER	46	1,110	0.09
LEFEBVRE	21	1,565	0.12	NICOLAS	47	1,108	0.09
LAMBERT	23	1,514	0.12	MEUNIER	48	1,091	0.09
VINCENT	24	1,481	0.12	FRANCOIS	49	1,089	0.09
MOREL	25	1,460	0.11	DENIS	50	1,080	0.08

Notes: This table provides the list of the 50 most frequent surnames in the MPF database. Shares are in percent of all MPF records (1,270,943).

Table B.5. Distribution of Unique Surnames

Occurrences	Frequency	Share
1	83,180	45.59
2–5	63,316	34.71
6–10	16,737	9.17
11–20	9,898	5.43
21–50	5,934	3.25
51–100	1,862	1.02
101–1,000	1,451	0.80
1,001–2,000	46	0.03
2,001–5,000	9	0.00
> 5,000	1	0.00

Notes: This table provides the distribution of unique surnames in the MPF database. *Occurrences* refers to the number of times a unique surname appears, while *Frequency* refers to the number of surnames in each group. Shares are in percent, and are relative to the total number of unique surnames (182,434).

Table B.6. Comparison of the Most Frequent Surnames in the MPF and INSEE Databases

Dataset Cohorts	A. MPF		B. MPF		C. INSEE	
	All		1891–1900		1891–1900	
Surname	Rank	Share	Rank	Share	Rank	Share
MARTIN	1	0.42	1	0.42	1	0.39
BERNARD	2	0.22	2	0.22	2	0.21
DURAND	3	0.21	4	0.20	4	0.18
PETIT	4	0.20	3	0.21	3	0.18
THOMAS	5	0.18	6	0.18	5	0.18
MOREAU	6	0.18	7	0.18	7	0.17
RICHARD	7	0.18	5	0.18	6	0.17
ROBERT	8	0.18	9	0.17	8	0.16
DUBOIS	9	0.17	8	0.17	9	0.16
LAURENT	10	0.16	10	0.16	10	0.16

Notes: This table provides the list of the 10 most frequent surnames in the MPF database in Panel A, in the MPF database among the MPFs born between 1891 and 1900 in Panel B, and in the INSEE surname file (INSEE, 2012) among individuals born between 1891 and 1900. Shares are in percent of all MPF records (1,270,943).

Table B.7. Most Frequent First Names

First name	Rank	Frequency	Share	First name	Rank	Frequency	Share
JEAN	1	31,574	2.48	CLAUDE	26	4,045	0.32
PIERRE	2	21,894	1.72	LUCIEN	27	3,673	0.29
LOUIS	3	20,267	1.59	VICTOR	28	3,492	0.27
JOSEPH	4	16,497	1.30	JEAN PIERRE	29	3,442	0.27
FRANCOIS	5	16,397	1.29	RENE	30	3,407	0.27
JEAN MARIE	6	14,961	1.18	LOUIS JOSEPH	31	3,327	0.26
HENRI	7	12,979	1.02	JACQUES	32	3,259	0.26
JEAN BAPTISTE	8	11,687	0.92	LOUIS MARIE	33	3,186	0.25
ANTOINE	9	9,187	0.72	ALFRED	34	3,180	0.25
EMILE	10	8,480	0.67	ALEXANDRE	35	3,155	0.25
PAUL	11	7,783	0.61	ETIENNE	36	3,131	0.25
EUGENE	12	7,741	0.61	JEAN FRANCOIS	37	3,127	0.25
AUGUSTE	13	7,390	0.58	ERNEST	38	3,109	0.24
JULES	14	7,288	0.57	ALPHONSE	39	2,988	0.24
GEORGES	15	7,145	0.56	YVES MARIE	40	2,915	0.23
CHARLES	16	7,061	0.56	JULIEN	41	2,749	0.22
LEON	17	6,858	0.54	GASTON	42	2,624	0.21
PIERRE MARIE	18	6,432	0.51	FERNAND	43	2,514	0.20
JOSEPH MARIE	19	6,092	0.48	JEAN JOSEPH	44	2,477	0.19
ALBERT	20	5,408	0.43	EDOUARD	45	2,436	0.19
FRANCOIS MARIE	21	5,324	0.42	GABRIEL	46	2,435	0.19
MARCEL	22	5,243	0.41	GUSTAVE	47	2,335	0.18
JEAN LOUIS	23	5,116	0.40	MARIUS	48	2,221	0.17
ANDRE	24	4,622	0.36	LEONARD	49	2,182	0.17
MAURICE	25	4,229	0.33	HENRI JOSEPH	50	2,167	0.17

Notes: This table provides the list of the 50 most frequent first names in the MPF database. Shares are in percent of all MPF records (1,270,943).

Table B.8. Distribution of Unique First Names

Occurrences	Frequency	Share
1	170,535	74.89
2–5	41,714	18.32
6–11	6,828	3.00
11–20	3,697	1.62
21–50	2,544	1.12
51–100	1,042	0.46
101–1,000	1,241	0.55
1,001–2,000	48	0.02
2,001–5,000	30	0.01
5,001–10,000	15	0.01
10,001–20,000	5	0.00
20,001–40,000	3	0.00

Notes: This table provides the distribution of unique first names in the MPF database. *Occurrences* refers to the number of times a unique first name appears, while *Frequency* refers to the number of first names in each group. Shares are in percent, and are relative to the total number of unique first names (227,701).

Table B.9. Types of Alternative Names

Type	Frequency	Share
No alternative name	1,265,538	99.57
Other name	259	0.02
Alias	4,991	0.39
Maiden name	44	0.00
Married name	111	0.01

Notes: This table provides the list and frequencies of alternative names in the MPF database. Shares are in percent of all MPF records (1,270,943).

Table B.10. Distribution of Death Types

Type	Frequency	Share
Location of death		
Battlefield (missing)	619,467	48.74
Battlefield	352,552	27.74
Hospital	183,295	14.42
Ambulance	84,700	6.66
Home	5,972	0.47
Prison	3,383	0.27
At sea	2,920	0.23
Type of death		
MIA	9,219	0.73
Wounds	4,788	0.38
Disease	2,231	0.18
Accident	1,962	0.15
Suicide	302	0.02
Executed	152	0.01

Notes: This table provides the distribution of death types in the MPF database. When this information is missing in the original data, we attribute the value `Battlefield` along with the flag `Missing`. Shares are in percent of all MPF records (1,270,943).

Table B.11. Distribution of Missing Recruitment Class Information

Case	Records	Share
Class available and in bounds ± 4 years	1,238,222	97.43
Class missing, imputed from birth year	18,214	1.43
Class out of bound (± 4 years), imputed from birth year	14,093	1.11
Class missing	414	0.03

Notes: This table provides the distribution of missing recruitment class information in the MPF database. Shares are in percent of all MPF records (1,270,943).

Table B.12. Distribution of Military Ranks

Rank	Frequency	Share	Rank	Frequency	Share
A. Enlisted			B. NCOs		
SOLDAT	870,382	68.81	CAPORAL	104,956	8.30
CHASSEUR	55,665	4.40	SERGEANT	73,126	5.78
CANONNIER	42,345	3.35	SOUS-LIEUTENANT	19,624	1.55
SAPEUR	19,040	1.51	ADJUDANT	12,801	1.01
MATELOT	8,385	0.66	MARECHAL DES LOGIS	10,365	0.82
CAVALIER	1,805	0.14	BRIGADIER	8,359	0.66
CHAUFFEUR	1,420	0.11	MAITRE	5,052	0.40
MEDECIN	1,261	0.10	QUARTIER-MAITRE	2,132	0.17
GENDARME	713	0.06	CHEF	1,553	0.12
TRAVAILLEUR	533	0.04	SECOND MAITRE	955	0.08
TIRAILLEUR	478	0.04	PREMIER-MAITRE	193	0.02
INFIRMIER	326	0.03	SOUS-CHEF	92	0.01
GARDE	186	0.01	MAJOR	29	0.00
PHARMACIEN	111	0.01	SOUS-INTENDANT	24	0.00
ARTIFICIER	107	0.01			
MARECHAL FERRANT	104	0.01	C. COs		
VETERINAIRE	101	0.01	LIEUTENANT	10,526	0.83
PRETRE	74	0.01	CAPITAINE	7,865	0.62
INFIRMIERE	60	0.00	ASPIRANT	2,739	0.22
MECANICIEN	57	0.00	COMMANDANT	492	0.04
AUTRE	53	0.00	OFFICIER	420	0.03
MUSICIEN	49	0.00	COLONEL	169	0.01
ELEVE	35	0.00	GENERAL	90	0.01
TELEPHONISTE	33	0.00			
COMMIS	27	0.00	D. General Ranks		
AVIATEUR	22	0.00	Enlisted	1,003,425	79.32
COMISSAIRE	14	0.00	NCOs	239,261	18.91
INGENIEUR	14	0.00	COs	22,301	1.76
DOUANIER	13	0.00			
PAYEUR	11	0.00			

Notes: This table provides the distribution of military ranks in the MPF database. *NCOs* stands for *Non Commissioned Officers* and *COs*, for *Commissioned Officers*. Shares are in percent of all non-civilian MPF records for which a rank is available (1,264,987).

Table B.13. Distribution of Military Units

Unit	Frequency	Share
A. Infantry		
REGIMENT D'INFANTERIE	819,184	64.90
REGIMENT D'INFANTERIE TERRITORIALE	52,682	4.17
BATAILLON DE CHASSEURS A PIED	51,319	4.07
BATAILLON DE CHASSEURS ALPINS	42,955	3.40
B. Artillery		
REGIMENT D'ARTILLERIE	32,894	2.61
REGIMENT D'ARTILLERIE DE CAMPAGNE	18,015	1.43
REGIMENT D'ARTILLERIE LOURDE	16,238	1.29
REGIMENT D'ARTILLERIE A PIED	6,916	0.55
GROUPE D'ARTILLERIE	3,674	0.29
C. Engineering		
REGIMENT DU GENIE	26,849	2.13
D. Cavalry		
REGIMENT DE DRAGONS	6,305	0.50
REGIMENT DE CUIRASSIERS	5,821	0.46
REGIMENT DE HUSSARDS	2,680	0.21
REGIMENT DE CHASSEURS	2,189	0.17
E. Other		
ESCADRON DU TRAIN DES EQUIPAGES MILITAIRES	10,382	0.82
BATIMENT DE MARINE	4,894	0.39
DEPOT DES EQUIPAGES DE LA FLOTTE	2,415	0.19
SECTION D'INFIRMIERS MILITAIRES	6,876	0.54
SECTION DES COMMIS ET OUVRIERS MILITAIRES D'ADMINISTRATION	5,387	0.43
GROUPE D'AVIATION	4,159	0.33

Notes: This table provides the distribution of military units in the MPF database for units with more than 2,000 MPs records. Shares are in percent of all MPF records for which a military unit is available (1,262,270).

Table B.14. Most Frequent Municipalities

Municipality	Département	Rank	Frequency	Share
PARIS	SEINE	1	64,988	5.15
LYON	RHONE	2	8,851	0.70
MARSEILLE	BOUCHES-DU-RHONE	3	8,188	0.65
LILLE	NORD	4	5,870	0.46
BORDEAUX	GIRONDE	5	5,822	0.46
LE HAVRE	SEINE-INFERIEURE	6	3,987	0.32
ROUBAIX	NORD	7	3,474	0.28
SAINT-ETIENNE	LOIRE	8	3,470	0.27
REIMS	MARNE	9	3,430	0.27
NANTES	LOIRE-INFERIEURE	10	3,377	0.27
TOULOUSE	HAUTE-GARONNE	11	2,864	0.23
ROUEN	SEINE-INFERIEURE	12	2,751	0.22
NANCY	MEURTHE-ET-MOSELLE	13	2,613	0.21
BREST	FINISTERE	14	2,393	0.19
NICE	ALPES-MARITIMES	15	2,244	0.18
AMIENS	SOMME	16	2,199	0.17
DUNKERQUE	NORD	17	2,127	0.17
CALAIS	PAS-DE-CALAIS	18	2,097	0.17
LIMOGES	HAUTE-VIENNE	19	2,022	0.16
TOURCOING	NORD	20	1,912	0.15
ORLEANS	LOIRET	21	1,727	0.14
DIJON	COTE-D'OR	22	1,686	0.13
RENNES	ILLE-ET-VILAINE	23	1,630	0.13
ANGERS	MAINE-ET-LOIRE	24	1,567	0.12
TOULON	VAR	25	1,535	0.12
SAINT-DENIS	SEINE	26	1,517	0.12
BOULOGNE-SUR-MER	PAS-DE-CALAIS	27	1,494	0.12
MONTPELLIER	HERAULT	28	1,451	0.11
TROYES	AUBE	29	1,413	0.11
GRENOBLE	ISERE	30	1,384	0.11
TOURS	INDRE-ET-LOIRE	31	1,362	0.11
BESANCON	DOUBS	32	1,352	0.11
NIMES	GARD	33	1,352	0.11
VERSAILLES	SEINE-ET-OISE	34	1,328	0.11
LE MANS	SARTHE	35	1,276	0.10
SAINT-QUENTIN	AISNE	36	1,214	0.10
LORIENT	MORBIHAN	37	1,203	0.10
ARMENTIERES	NORD	38	1,157	0.09
CAEN	CALVADOS	39	1,035	0.08
BEZIERS	HERAULT	40	1,001	0.08

Notes: This table provides the list of the 40 most frequent municipalities in the MPF database in 1911 geography. While Paris appears as a single municipality in this table, MPF information is broken down across 20 municipal arrondissements in the database. Shares are in percent of all MPF records for which a municipality of birth is available (1,262,500).

Table B.15. Distribution of Unique Municipalities

Occurrences	Frequency	Share
1	666	0.05
2–5	3,445	1.00
6–10	6,052	3.84
11–20	9,556	11.37
21–50	10,491	26.46
51–100	3,705	20.15
101–1,000	1,573	24.26
1,001–2,000	21	2.34
2,001–5,000	14	3.09
> 5,000	5	7.42

Notes: This table provides the distribution of unique municipalities in the MPF database. *Occurrences* refers to the number of times a unique municipality appears, while *Frequency* refers to the number of municipalities in each group. Shares are in percent, and are relative to the total number of unique municipalities with at least one MPF (35,528).

Table B.16. Département-Level Military Fatalities and Death Rates (1/2)

Département	MPFs		Death rates		Difference
	BG2022	GG2023	BG2022	GG2023	
01 AIN	11,469	11,906	15.43	16.02	0.59
02 AISNE	15,579	15,984	13.89	14.25	0.36
03 ALLIER	13,748	14,132	16.43	16.89	0.46
04 BASSES-ALPES	4,104	4,220	18.17	18.68	0.51
05 HAUTES-ALPES	4,091	4,279	16.58	17.34	0.76
06 ALPES-MARITIMES	6,502	6,806	6.39	6.69	0.30
07 ARDECHE	13,784	14,319	21.26	22.09	0.83
08 ARDENNES	8,590	8,938	11.79	12.27	0.48
09 ARIEGE	7,530	7,856	19.45	20.30	0.84
10 AUBE	7,282	7,545	14.69	15.22	0.53
11 AUDE	9,589	9,807	14.97	15.31	0.34
12 AVEYRON	14,985	15,403	20.58	21.16	0.57
13 BOUCHES-DU-RHONE	13,201	13,886	6.70	7.05	0.35
14 CALVADOS	13,649	14,214	16.38	17.05	0.68
15 CANTAL	8,231	8,543	20.41	21.18	0.77
16 CHARENTE	10,509	10,932	14.68	15.27	0.59
17 CHARENTE-INFERIEURE	12 951	13 590	14.10	14.80	0.70
18 CHER	11,787	12,249	17.00	17.67	0.67
19 CORREZE	12,667	12,666	21.94	21.94	0.00
20 CORSE	9,390	9,621	17.29	17.71	0.43
21 COTE-D'OR	10,799	11,256	14.73	15.35	0.62
22 COTES-DU-NORD	25,633	26,720	22.19	23.13	0.94
23 CREUSE	9,650	10,010	19.96	20.70	0.74
24 DORDOGNE	16,186	16,638	18.27	18.78	0.51
25 DOUBS	9,972	10,450	14.41	15.10	0.69
26 DROME	9,250	9,584	14.89	15.43	0.54
27 EURE	10,255	10,698	14.95	15.60	0.65
28 EURE-ET-LOIR	10,260	10,540	17.70	18.18	0.48
29 FINISTERE	28,887	29,705	17.05	17.53	0.48
30 GARD	10,818	11,246	11.95	12.42	0.47
31 HAUTE-GARONNE	12,123	12,340	13.78	14.03	0.25
32 GERS	7,436	7,724	16.04	16.66	0.62
33 GIRONDE	20,151	20,897	11.18	11.59	0.41
34 HERAULT	10,890	11,196	9.81	10.09	0.28
35 ILLE-ET-VILAINE	23,055	24,021	17.18	17.90	0.72
36 INDRE	10,645	10,949	17.95	18.46	0.51
37 INDRE-ET-LOIRE	10,012	10,378	13.70	14.21	0.50
38 ISERE	16,868	17,680	13.79	14.45	0.66
39 JURA	8,795	9,168	16.38	17.07	0.69
40 LANDES	11,484	11,781	18.81	19.30	0.49
41 LOIR-ET-CHER	9,943	10,197	18.01	18.47	0.46
42 LOIRE	19,204	19,985	13.33	13.88	0.54
43 HAUTE-LOIRE	11,245	11,537	18.74	19.23	0.49
44 LOIRE-INFERIEURE	22,830	23,706	16.02	16.64	0.61
45 LOIRET	13,827	14,114	18.01	18.39	0.37

Notes: This table provides the département-level number of MPFs and military death rates in Boehnke and Gay (2022) (*BG2022*) and in the present study (*GG2023*). The GG2023 MPF data is restricted to non-civilian male MPFs born in France outside Alsace-Lorraine for which the département of birth is known and who died between August 1, 1914 and October 23, 1919. Military death rates are in percent and are calculated by dividing the number of MPFs by the number of men aged 15–44 per the census of 1911. The BG2022 data are from Boehnke and Gay (2020).

Table B.17. Département-Level Military Fatalities and Death Rates (2/2)

Département	MPFs		Death rates		Difference	
	BG2022	GG2023	BG2022	GG2023		
46	LOT	7,200	7,496	18.32	19.08	0.75
47	LOT-ET-GARONNE	7,456	7,761	13.52	14.08	0.55
48	LOZERE	6185	6,342	28.61	29.33	0.73
49	MAINE-ET-LOIRE	16,460	16,557	15.04	15.13	0.09
50	MANCHE	17,500	17,423	16.59	16.52	-0.07
51	MARNE	14,487	14,756	14.40	14.67	0.27
52	HAUTE-MARNE	7,541	7,844	16.64	17.31	0.67
53	MAYENNE	13226	13,568	20.82	21.36	0.54
54	MEURTHE-ET-MOSELLE	14,412	14,722	8.90	9.09	0.19
55	MEUSE	9,457	9,643	12.01	12.25	0.24
56	MORBIHAN	23,307	24,074	19.79	20.44	0.65
58	NIEVRE	11,011	11,413	19.49	20.20	0.71
59	NORD	51,279	52,506	11.29	11.57	0.27
60	OISE	12,758	13,100	14.28	14.67	0.38
61	ORNE	10,490	10,436	16.78	16.69	-0.09
62	PAS-DE-CALAIS	31,992	32,763	13.50	13.82	0.33
63	PUY-DE-DOME	16,531	17,336	15.25	15.99	0.74
64	BASSES-PYRENEES	13,887	14,273	15.59	16.03	0.43
65	HAUTES-PYRENEES	6,106	6,351	13.89	14.45	0.56
66	PYRENEES-ORIENTALES	6,901	7,102	14.64	15.06	0.43
69	RHONE	18,704	19,465	8.76	9.11	0.36
70	HAUTE-SAONE	8836	9,224	16.89	17.63	0.74
71	SAONE-ET-LOIRE	21,936	22,970	17.46	18.29	0.82
72	SARTHE	13,275	13,736	15.58	16.12	0.54
73	SAVOIE	9,287	9,705	17.26	18.03	0.78
74	HAUTE-SAVOIE	9,824	10,109	17.42	17.92	0.51
75	SEINE	78,434	81,912	7.19	7.51	0.32
76	SEINE-INFERIEURE	27,112	28,077	14.35	14.86	0.51
77	SEINE-ET-MARNE	12,311	12,827	15.31	15.96	0.64
78	SEINE-ET-OISE	19,402	19,878	10.22	10.48	0.25
79	DEUX-SEVRES	12,404	12,566	17.24	17.47	0.23
80	SOMME	17,093	17,247	16.01	16.16	0.14
81	TARN	10,304	10,602	15.36	15.81	0.44
82	TARN-ET-GARONNE	5,373	5,406	14.13	14.22	0.09
83	VAR	5,894	6,163	6.88	7.19	0.31
84	VAUCLUSE	6,233	6,444	12.21	12.62	0.41
85	VENDEE	19,040	19,301	21.05	21.34	0.29
86	VIENNE	11,953	12,292	17.04	17.53	0.48
87	HAUTE-VIENNE	14,324	14,633	17.43	17.81	0.38
88	VOSGES	15,786	16,172	15.65	16.03	0.38
89	YONNE	10,305	10,630	17.63	18.19	0.56
90	TERRITOIRE-DE-BELFORT	1,779	2,574	6.00	8.68	2.68
	Mean	13,881	14,331	15.56	16.07	0.51
	Total	1,207,651	1,246,815	13.76	14.21	0.45

Notes: This table provides the département-level number of MPFs and military death rates in Boehnke and Gay (2022) (*BG2022*) and in the present study (*GG2023*). The GG2023 MPF data is restricted to non-civilian male MPFs born in France outside Alsace-Lorraine for which the département of birth is known and who died between August 1, 1914 and October 23, 1919. Military death rates are in percent and are calculated by dividing the number of MPFs by the number of men aged 15–44 per the census of 1911. The BG2022 data are from Boehnke and Gay (2020).

Table B.18. Military Death Rates and Pre-War County Characteristics

Dependent variable	Military death rate		
	(1)	(2)	(3)
Share rural population	0.12*** [0.01]	0.13*** [0.03]	0.14*** [0.03]
Share born in county	0.12*** [0.03]	0.11*** [0.03]	0.13*** [0.04]
Female labour force participation		−0.02 [0.04]	−0.02 [0.04]
Share girls aged 5–19 in school		0.11 [0.07]	0.07 [0.07]
Total fertility rate		0.01* [0.01]	0.02 [0.01]
Personal wealth (10,000 francs)		0.04** [0.02]	0.05 [0.04]
Other characteristics	No	Yes	Yes
Military region FE	No	No	Yes
Counties	87	87	87
R ²	0.747	0.820	0.873

Notes: This table reports OLS coefficients from regressing military death rates on various pre-war county characteristics measured in 1911. *Other characteristics* include average height, population, the share of men working in industry, in agriculture, the share of the literate population, and the average direct taxes per inhabitant. Robust standard errors are in brackets.

*** Significant at the 1% level. ** Significant at the 5% level. * Significant at the 10% level.

Table B.19. Municipalities without MPFs

Municipality		Population	Municipality		Population
01023	ASNIERES-SUR-SAONE	124	34156	MERIFONS	86
02266	DOLIGNON	97	34231	ROMIGUIERES	32
02688	SAINT-PIERRE-LES-FRANQUEVILLE	144	34342	VIOLS-EN-LAVAL	41
02724	SOMMELANS	62	38472	SARCENAS	70
06037	CAUSSOLS	83	39259	GRANGE-DE-VAIVRE	39
06107	ROQUESTERON-GRASSE	86	39425	LES PLANCHES-PRES-ARBOIS	118
08104	CHARDENY	84	51190	COURTAGNON	53
08300	LE MONT-DIEU	71	51215	DOMPREMY	120
10044	BETIGNICOURT	75	51374	MONDEMENT-MONTGIVROUX	75
10085	CHARMOY	69	51406	NORROIS	140
10149	FEUGES	109	51493	SAINT-LEONARD	56
10236	MESNIL-LETTRE	78	52214	LA GENEVROYE	18
11114	CUMIES	90	52475	SOMMANCOURT	105
13090	SAINT-ANTONIN-SUR-BAYON	48	52503	VALLEROY	86
17392	SAINT-ROMAIN-SUR-GIRONDE	93	54218	GELAUCCOURT	76
17467	VERVANT	171	54561	VENNEZEY	79
18202	SAINT-CEOLS	63	55162	DOMREMY-LA-CANNE	66
21018	ARCEY	56	55168	DUZEY	77
21039	AVELANGES	63	55344	MONTBRAS	35
21049	BARJON	65	60283	GOUY-LES-GROSEILLERS	26
21217	CURLEY	47	60354	LAVERRIERE	61
21653	VANNAIRE	61	60551	ROUSSELOY	84
25065	BLARIANS	30	62047	AUBROMETZ	161
25297	LE GRATTERIS	57	65124	CAMPARAN	76
25327	LANTHENANS	90	65157	ENS	74
25366	MANCENANS-LIZERNE	126	65205	GOUAUX	106
25437	OSSE	163	65259	LANSAC	116
25443	PALANTINE	64	65311	MINGOT	65
25501	RONDEFONTAINE	30	65354	PAILHAC	53
25528	SAMSON	50	65379	RIS	38
25548	SOLEMONT	128	65381	SABARROS	103
25570	TRESSANDANS	75	65438	TALAZAC	73
27141	CHAMP-DOLENT	55	65443	THUY	33
27200	DARDEZ	53	66233	VIVES	85
27545	SAINT-GERMAIN-DE-PASQUIER	36	70090	BOURSIERES	133
27570	SAINT-MARTIN-LA-CAMPAGNE	63	70151	CHEVIGNEY	104
27637	THUIT-HEBERT	227	70420	PONT-SUR-L'OGNON	86
30148	LIOUC	100	78606	LE TARTRE-GAUDRAN	20
30181	MONTMIRAT	177	80225	CREUSE	87
30208	PUECHREDON	55	80325	FONTAINE-LES-CAPPY	101
30289	SAINT-NAZAIRE-DES-GARDIES	109	80528	MEREAUCOURT	33
31125	CATHERVIELLE	100	80773	VADENCOURT	79
31340	MERVILLA	57	83105	RIBOUX	21
31440	PROUPIARY	131	84060	LAGARDE-D'APT	70
33103	CASTELMORON-D'ALBRET	136	88186	FRENELLE-LA-PETITE	88
34066	CAZEVIELLE	44	88522	VOMECOURT-SUR-MADON	60

Notes: This table provides the list of 92 municipalities in which no MPF was born along with their INSEE identifier and their population in 1911.

Table B.20. Municipalities with the Highest Military Death Rates

Rank	Département	Commune	Population	MPFs	Death rates
1	JURA	ESSERVAL-COMBE	40	9	22.50
2	DOUBS	SANTOCHE	24	5	20.83
3	GARD	CAUSSE-BEGON	37	7	18.92
4	ALPES-MARITIMES	AMIRAT	49	9	18.37
5	CHARENTE-INFERIEURE	SAINT-MEDARD	117	21	17.95
6	CALVADOS	CLINCHAMPS-SUR-ORNE	502	88	17.53
7	HAUTE-SAVOIE	MARCELLAZ	370	64	17.30
8	MEURTHE-ET-MOSELLE	ROMAIN	36	6	16.67
9	CORSE	LANO	59	9	15.25
10	DOUBS	CHATEAUVIEUX-LES-FOSSES	33	5	15.15
11	JURA	MONTEPLAIN	40	6	15.00
12	DOUBS	BRETIGNEY	47	7	14.89
13	BASSES-ALPES	GANAGOBIE	34	5	14.71
14	LOIRE-INFERIEURE	SAINT-JOACHIM	1,175	169	14.38
15	DROME	ALEYRAC	70	10	14.29
15	DOUBS	TALLENAY	49	7	14.29
17	HAUTES-PYRENEES	GERM	92	13	14.13
18	DROME	LES TONILS	79	11	13.92
19	HAUTE-MARNE	DOULEVANT-LE-PETIT	36	5	13.89
19	DOUBS	LE CROUZET	72	10	13.89
21	AUBE	MOREMBERT	51	7	13.73
22	MEURTHE-ET-MOSELLE	IGNEY	257	35	13.62
23	EURE	TOCQUEVILLE	89	12	13.48
24	ORNE	LE MENIL-VICOMTE	67	9	13.43
25	ARIEGE	ESPLAS	231	31	13.42
26	DROME	POMMEROL	45	6	13.33
26	SEINE-ET-MARNE	NEUFMOUTIERS-EN-BRIE	300	40	13.33
28	AUBE	LA VILLE-AUX-BOIS	68	9	13.24
29	VOSGES	MARONCOURT	23	3	13.04
30	JURA	ABERGEMENT-LE-PETIT	62	8	12.90
31	YONNE	THIZY	226	29	12.83
32	PAS-DE-CALAIS	MANINGHEM	133	17	12.78
33	SEINE-INFERIEURE	CUVERVILLE	269	34	12.64
34	DORDOGNE	SAINT-CASSIEN	127	16	12.60
35	CALVADOS	CAUMONT-SUR-ORNE	104	13	12.50
35	JURA	LA CHARME	56	7	12.50
37	TARN	CAHUZAC	180	22	12.22
38	AVEYRON	LAPANOUSE-DE-CERNON	282	34	12.06
39	EURE-ET-LOIR	LES PINTHIÈRES	75	9	12.00
39	EURE	MESNIL-SOUS-VIENNE	100	12	12.00
41	HAUTES-PYRENEES	VIER-BORDES	118	14	11.86
42	LOT	SAINT-PANTALEON	186	22	11.83
43	HAUTE-MARNE	VERSEILLES-LE-HAUT	51	6	11.76
43	MEURTHE-ET-MOSELLE	LEMENIL-MITRY	34	4	11.76
45	TARN	SAINT-SERNIN-LES-LAVOUR	137	16	11.68
46	AUBE	SAINT-NICOLAS-LA-CHAPELLE	120	14	11.67
47	CREUSE	SAINT-PIERRE-LE-BOST	551	64	11.62
48	VOSGES	CHAUFFECOURT	26	3	11.54
49	DOUBS	COTEBRUNE	70	8	11.43
50	COTE-D'OR	CHAMPAGNY	79	9	11.39

Notes: This table provides the list of the municipalities with the highest military death rates. The data are based on MPFs born in France (outside Alsace-Lorraine), for which the municipality of birth is known and who died between August 1, 1914 and October 23, 1919. Military death rates are in percent and are calculated by dividing the number of MPFs by the municipality's population in 1911.

Table B.21. Survival Time among MPFs

Dependent variable	Survival time (in days)			
	(1)	(2)	(3)	(4)
Military unit				
Artillery	350.38*** [2.24]	351.30*** [2.24]	351.75*** [2.24]	351.13*** [2.27]
Engineering	231.39*** [3.58]	233.17*** [3.57]	233.51*** [3.57]	235.87*** [3.64]
Cavalry	314.16*** [4.80]	317.74*** [4.80]	318.34*** [4.80]	318.29*** [4.86]
Other	432.73*** [3.44]	431.04*** [3.45]	431.93*** [3.46]	435.90*** [3.52]
Military rank				
NCO	108.30*** [1.22]	110.15*** [1.22]	112.92*** [1.22]	115.12*** [1.25]
CO	134.38*** [4.35]	137.14*** [4.34]	142.29*** [4.35]	149.73*** [4.42]
Colonial unit	26.65*** [1.58]	23.03*** [1.61]	24.38*** [1.61]	26.77*** [1.66]
Age (in days)	0.01*** [0.00]	0.01*** [0.00]	0.01*** [0.00]	0.01*** [0.00]
Volunteer	-93.64*** [9.93]	-85.84*** [9.89]	-81.93*** [9.90]	-77.63*** [10.06]
Military region of recruitment FE	No	Yes	Yes	Yes
Département of birth FE	No	No	Yes	No
Municipality of birth FE	No	No	No	Yes
Observations	953,382	953,382	953,382	953,382
R ²	0.068	0.072	0.074	0.109
Outcome mean	527.69	527.69	527.69	527.69
Outcome s.d.	470.96	470.96	470.96	470.96

Notes: This table reports OLS coefficients from regressing survival duration (in days) between August 2, 1914 and the date of death, on individual MPF characteristics. The sample consists of non-civilian MPFs of the cohorts 1866–94 born in mainland France outside of Alsace-Lorraine who died between August 2, 1914 and November 11, 1918. The excluded category for military type is **Infantry** and for military rank, **Enlisted**. Robust standard errors are in brackets.

*** Significant at the 1% level. ** Significant at the 5% level. * Significant at the 10% level.

References

- Boehnke, Jörn, and Victor Gay.** 2022. “The Missing Men. World War I and Female Labor Force Participation.” *Journal of Human Resources*, 57(4): 1209–41.
- Boehnke, Jörn, and Victor Gay.** 2020. *Replication Data for: The Missing Men. World War I and Female Labor Force Participation [database]*. Harvard Dataverse. <https://doi.org/10.7910/DVN/AP1HZ8>.
- Fontaine, Arthur.** 1924. *L’Industrie Française Pendant la Guerre*. New Haven: Yale University Press.
- Gay, Victor.** 2020. *TRF-GIS Military Subdivisions (1874–1940) [database]*. Harvard Dataverse. <https://doi.org/10.7910/DVN/TAMQAG>.
- Gay, Victor.** 2023. “The Intergenerational Transmission of World War I on Female Labor.” *The Economic Journal*, 133(654): 2303–33.
- IGN.** 2015. *Geofla@Communes édition 2015 France Métropolitaine [database]*. Paris: IGN. <https://geoservices.ign.fr/geofla>.
- INSEE.** 2012. *Fichiers des Noms de Famille de 1891 à 2000, Édition 2008 [database]*. Paris: INSEE [producer], ADISP [distributor]. <https://data.progedo.fr/studies/doi/10.13144/lil-0697>.