

Morts Pour la France
A Database of French Fatalities of the Great War

Online Appendix

Victor Gay* Pauline Grosjean[†]

June 2023

A Supplementary Figures	2
B Supplementary Tables	14

*Department of Social and Behavioral Sciences, Toulouse School of Economics and Institute for Advanced Study in Toulouse, University of Toulouse Capitole, Toulouse, France. Email: victor.gay@tse-fr.eu.

[†]University of New South Wales (UNSW) and CEPR. Email: p.grosjean@unsw.edu.au.

A. Supplementary Figures



Figure A.1. Military Regions, Subdivisions, and Recruitment Bureaus in 1914

Notes: This figure displays the geography of military regions (thick black lines), subdivisions of military regions (thin black lines), and recruitment bureaus (red dots) in August 1914. Shapefiles from Gay (2020).

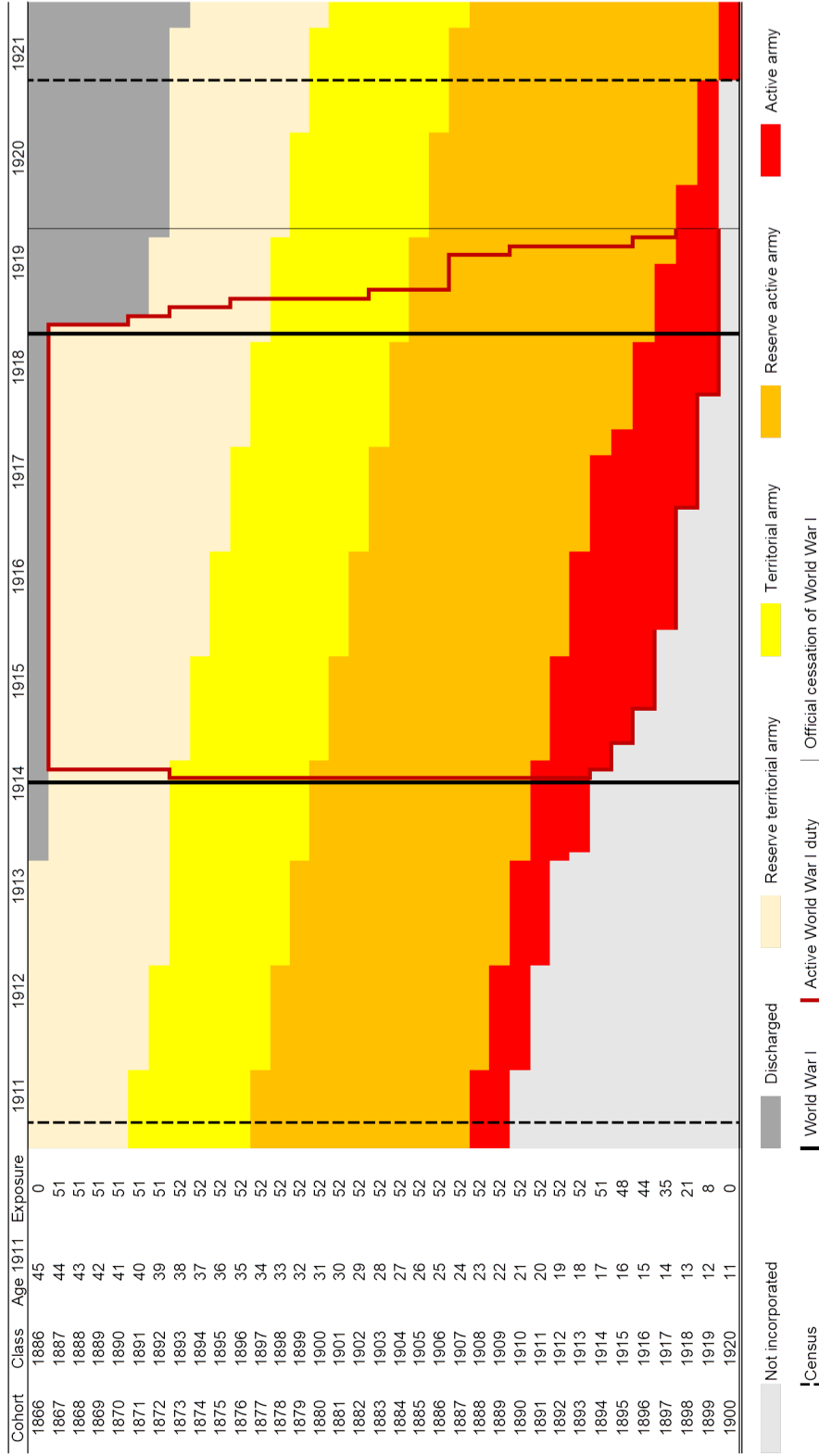


Figure A.2. Military Duties by Cohort (1911-1921)

Notes: This figure displays the evolution of military obligations by cohort between 1911 and 1921. *Class* corresponds to the year in which men were drafted, at age 20. *Exposure* corresponds to the number of months a cohort was actively engaged in World War I, between August 2, 1914, and October 23, 1919. The thick red line displays the timing of active World War I duty, which, for most cohorts, lasted beyond the Armistice of November 1918.

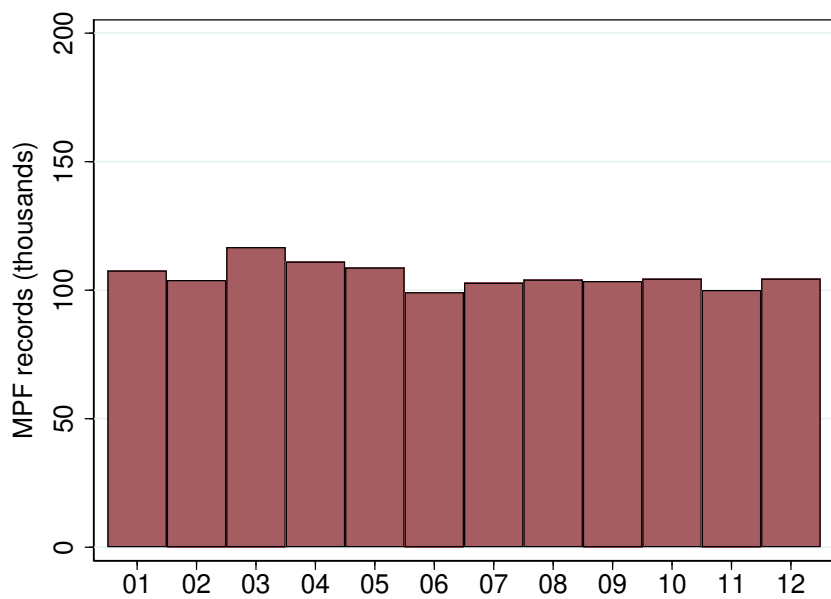


Figure A.3. Distribution of Months of Birth Among MPF Records

Notes: Each bar represents the number of MPF records that were born in a given month. This figure is based on 1,267,137 MPF records.

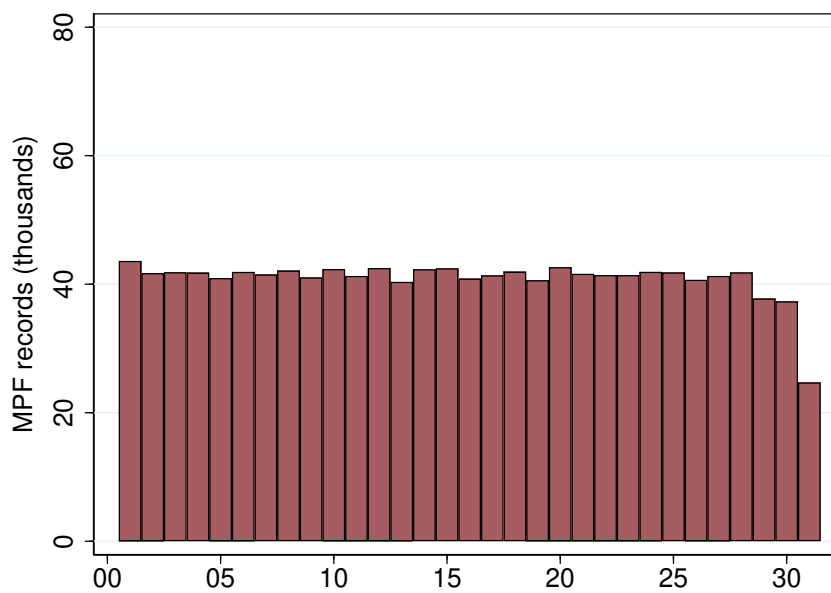


Figure A.4. Distribution of Days of Birth Among MPF Records

Notes: Each bar represents the number of MPF records that were born in a given day. This figure is based on 1,267,042 MPF records.

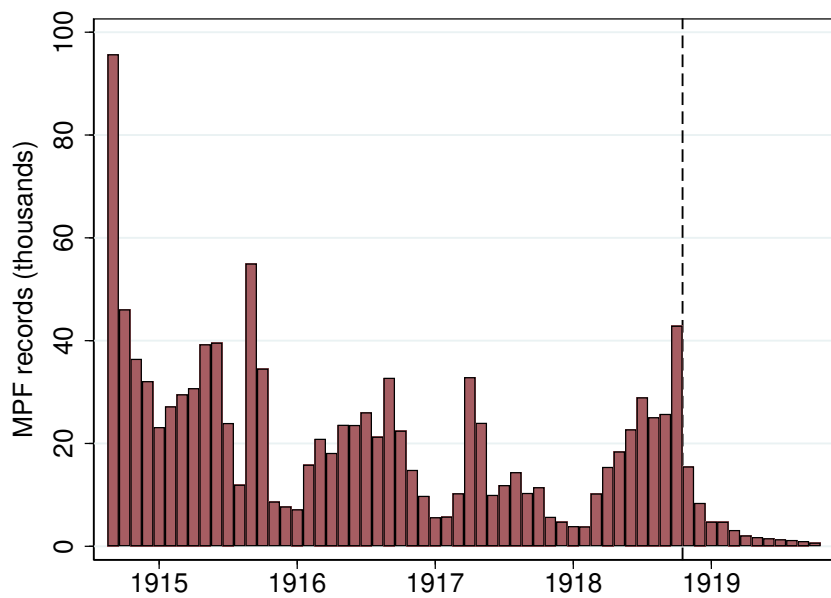


Figure A.5. Distribution of Monthly Deaths Among MPF Records

Notes: Each bar represents the number of MPF records that died in a given month. The vertical dashed line corresponds to the date of the Armistice on November 11, 1918. This figure is based on the 1,170,668 MPFs who died between August 2, 1914 and October 23, 1919.

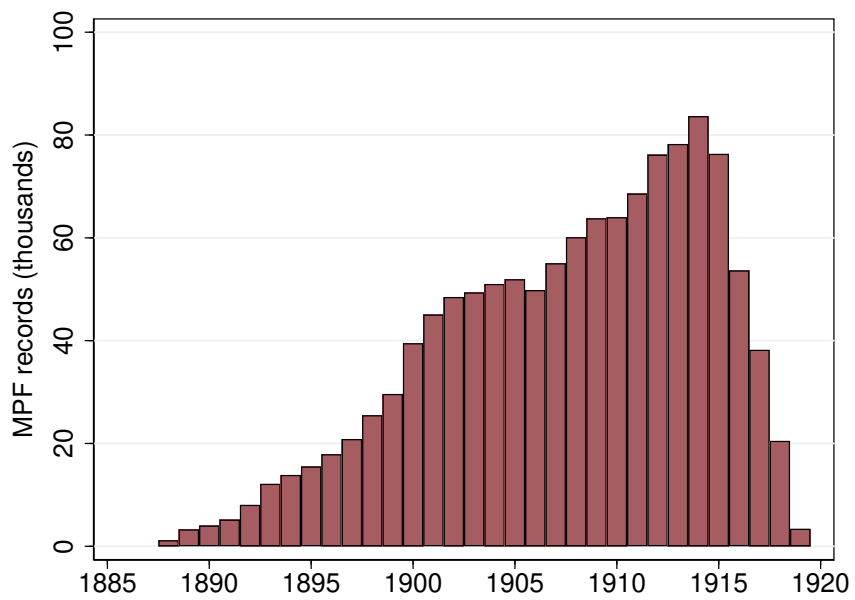


Figure A.6. Distribution of Recruitment Classes Among MPF Records

Notes: Each bar represents the number of MPF records that were recruited on a given year. This figure is restricted to the recruitment classes 1885–1920, which represent 1,236,359 MPF records.

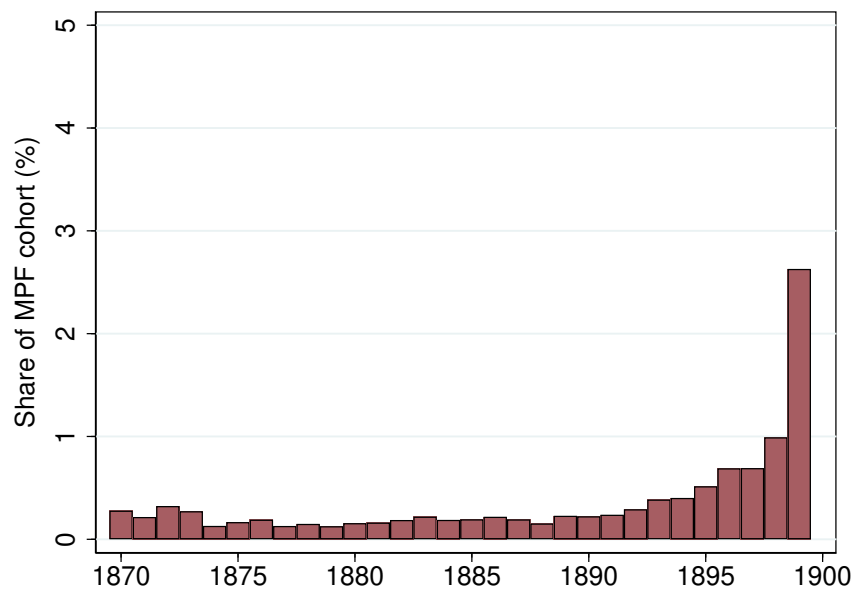


Figure A.7. Share of War Volunteers Across Cohorts

Notes: Each bar represents the share of MPF records of a given year of birth that was a war volunteer. This figure is restricted to the cohorts 1870–1899, for which there are at least one thousand MPF records. These represent 1,229,911 MPF records.

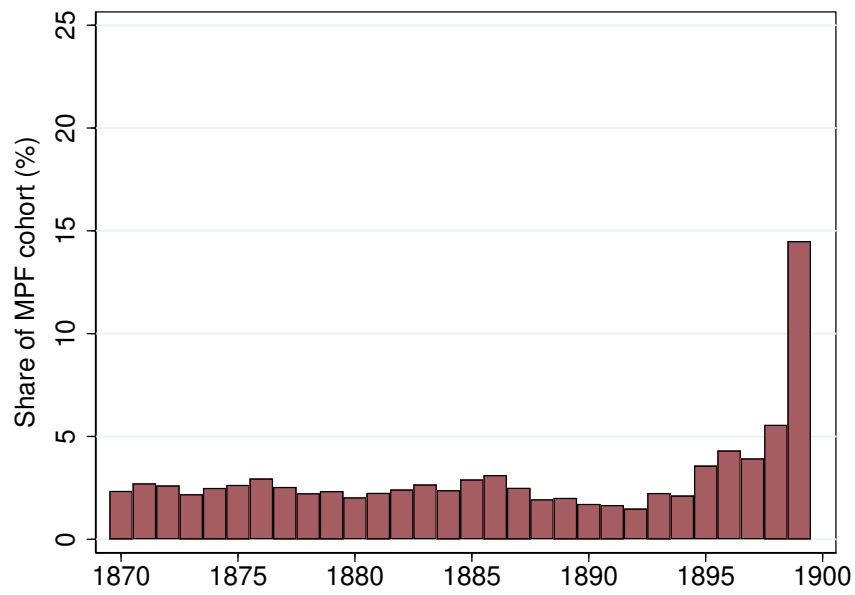


Figure A.8. Share of War Volunteers Across Cohorts

Notes: Each bar represents the share of MPF records of a given year of birth that was enrolled before age 20, outside of war volunteers. This figure is restricted to the cohorts 1870–1899, for which there are at least one thousand MPF records. These represent 1,238,165 MPF records.

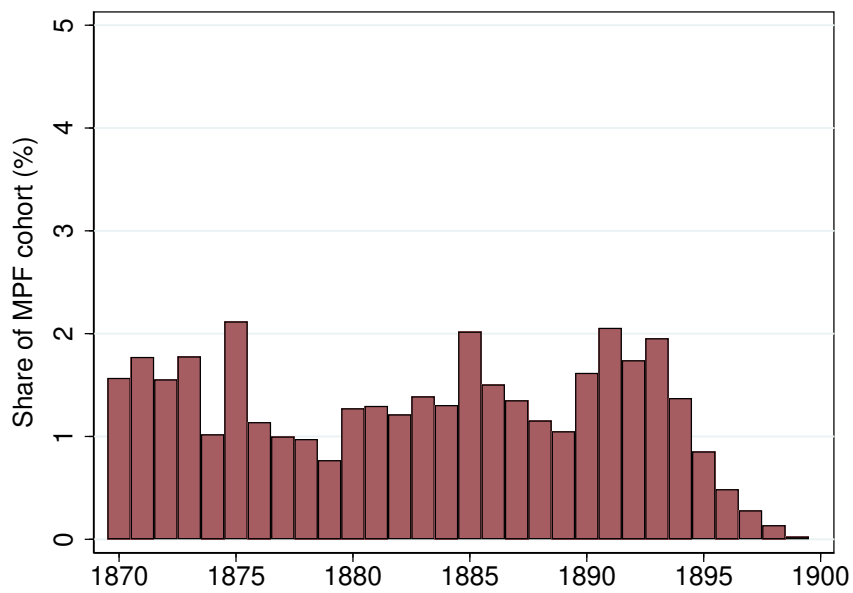


Figure A.9. Share of Exempted Across Cohorts

Notes: Each bar represents the share of MPF records of a given year of birth that was enrolled after age 20. This figure is restricted to the cohorts 1870–1899, for which there are at least one thousand MPF records. These represent 1,238,165 MPF records.

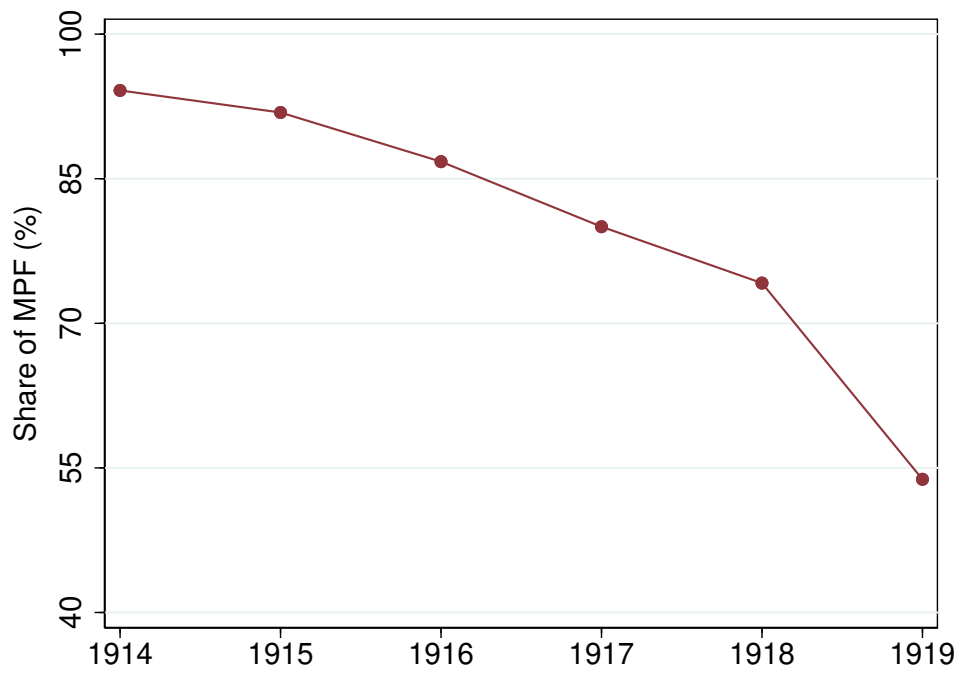


Figure A.10. Share of Infantry among MPFs

Notes: This figure displays the share of MPFs in the infantry by year of death among MPF records for which the military unit is available. These represent 1,257,762 MPF records .

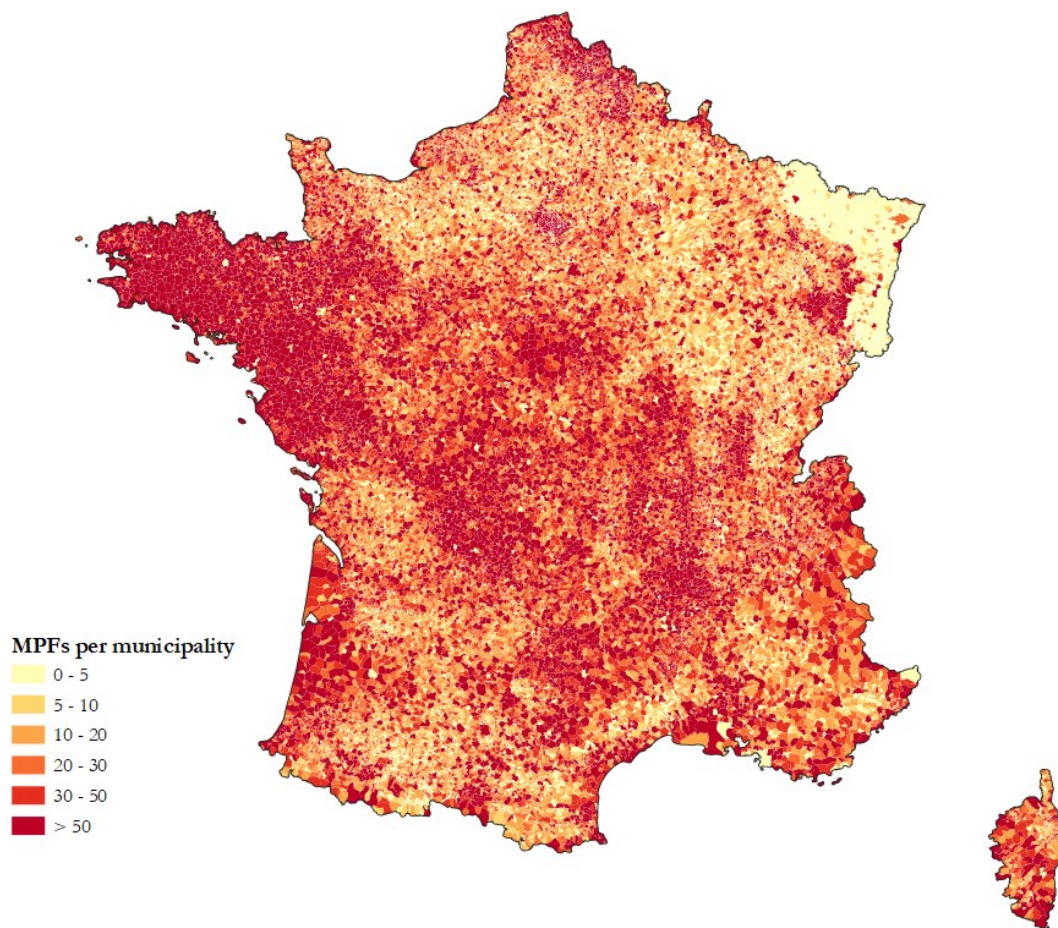


Figure A.11. Distribution of MPFs across Municipalities

Notes: This figure displays the distribution of MPFs across municipalities of birth in 2015 geography using IGN's (2015) Geofla shapefile. This figure is based on 1,258,553 MPF records for which the municipality of birth is available.

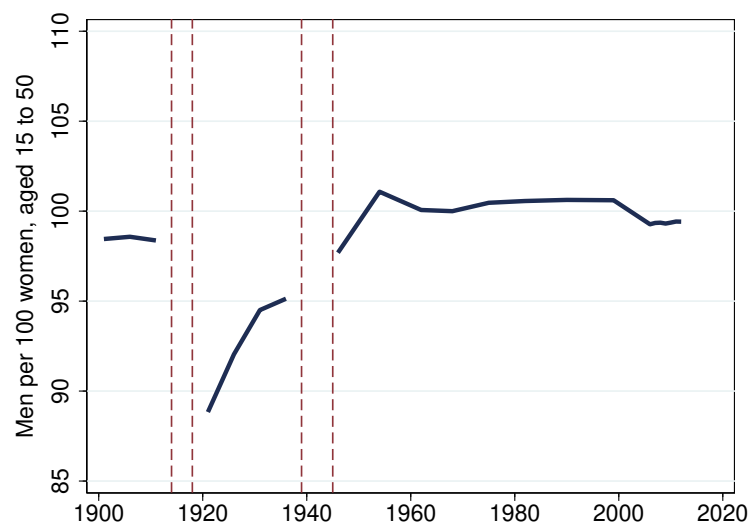


Figure A.12. Adult Sex Ratio (1900–2012)

Notes: This figure displays the sex ratio among French adults aged 15 to 50. Data are from the censuses 1901–2012. Vertical lines indicate WWI (1914–1918) and WWII (1939–1945). Figure based on Gay (2023, p. 5).

B. Supplementary Tables

Table B.1. Abbreviations to Archival Sources

Source	Title	Persistent identifier
<i>JOLD</i>	<i>Journal Officiel de la République Française, Lois et Décrets</i>	ark:/12148/cb34378481
<i>JOCD</i>	<i>Journal Officiel de la République Française, Débats Parlementaires</i>	ark:/12148/cb328020951
<i>JOS</i>	<i>Journal Officiel de la République Française, Débats Parlementaires, Sénat</i>	ark:/12148/cb34363182v
<i>BALD</i>	<i>Bulletin Annoté des Lois et Décrets</i>	ark:/12148/cb34426061p
<i>GGDO</i>	<i>Guerre de 14: Documents Officiels, Textes Législatifs et Réglementaires</i>	ark:/12148/cb318556850

Notes: This table provides the list of abbreviations used to discuss archival sources.

Table B.2. Supporting Administrative Sources

Date	Title	Persistent identifier	Reference
1873-07-24	Loi relative à l'organisation générale de l'armée	ark:/12148/bpt6k20922821	<i>JOLD</i> , 5(215), 5281-3
1905-05-21	Loi modifiant la loi du 15 juillet 1889 sur le recrutement de l'armée et réduisant à deux ans la durée du service dans l'armée active	ark:/12148/bpt6k6253433r/f1	<i>JOLD</i> , 37(81), 1869-90
1913-08-07	Loi modifiant les lois des cadres de l'infanterie, de la cavalerie, de l'artillerie et du génie, en ce qui concerne l'effectif des unités et fixant les conditions du recrutement de l'armée active et la durée du service dans l'armée active et ses réserves	ark:/12148/bpt6k63879116/f2	<i>JOLD</i> , 46(2), 7138-42
1913-09-22	Décret relatif à la répartition et à l'organisation des subdivisions territoriales	ark:/12148/bpt6k2023239d/f6	<i>JOLD</i> , 45(261), 8546-7
1913-12-22	Loi portant création d'une nouvelle région de corps d'armée sur le territoire de la France	ark:/12148/bpt6k2023327j	<i>JOLD</i> , 45(349), 11090-1
1913-12-31	Décret portant constitution d'une 21e région territoriale	ark:/12148/bpt6k2023336h/f4	<i>JOLD</i> , 46(2), 108-9

Table B.2—continued on next page

Table B.2. Supporting Administrative Sources—Continued

Date	Title	Persistent identifier	Reference
1915-07-02	Loi complétant, en ce qui concerne les actes de décès de militaires ou civils tués à l'ennemi ou morts dans des circonstances se rapportant à la guerre, les articles du code civil sur les actes de l'état civil	ark:/12148/bpt6k6349075j	<i>JOLD</i> , 47(184), 4653-4
1915-08-17	Loi assurant la juste répartition et une meilleure utilisation des hommes mobilisés et mobilisables	ark:/12148/bpt6k6351549k	<i>JOLD</i> , 47(223), 5795-7
1919-10-23	Loi relative à la date de cessation des hostilités	ark:/12148/bpt6k6383986p/f2	<i>JOLD</i> , 51(289), 11790
1919-10-25	Loi relative à la commémoration et à la glorification des morts pour la France au cours de la grande guerre	ark:/12148/bpt6k6383988h/f2	<i>JOLD</i> , 51(291), 11910
1919-03-31	Loi portant ouverture sur l'exercice 1919 de crédits provisoires concernant les dépenses militaires et les dépenses exceptionnelles des services civils et applicables au deuxième trimestre de 1919	ark:/12148/bpt6k63721729/f36	<i>JOLD</i> , 51(90), 3342-3
1922-02-28	Loi relative aux actes de décès des militaires et civils "morts pour la France"	ark:/12148/bpt6k64394769/f8	<i>JOLD</i> , 54(59), 2450

Table B.3. Soldiers Mobilized Outside of Armed Services (Thousands)

Date	War Factories	Mines	Administrations	Agriculture	Total
08-1914	0	0	408	0	408
07-1915	122	0	<i>n.a.</i>	0	<i>n.a.</i>
01-1916	339	0	<i>n.a.</i>	0	<i>n.a.</i>
07-1916	467	59	<i>n.a.</i>	0	<i>n.a.</i>
01-1917	515	65	357	0	937
07-1917	559	75	349	130	1,113
11-1917	511	110	354	220	1,195
01-1918	534	110	352	307	1,303
07-1918	493	96	353	301	1,243
11-1918	487	97	352	311	1,247

Notes: This table reports the number of soldiers mobilized outside of armed services in thousands between August 1914 and November 1918. *Mines* include navigation; *Administrations* include railway transportation; *Agriculture* does not include soldiers on agricultural leaves. *n.a.* denotes missing data. Data are from Fontaine (1924, 61). This table is from Boehnke and Gay (2022).

Table B.4. Most Frequent Surnames

Surname	Rank	Frequency	Share	Surname	Rank	Frequency	Share
MARTIN	1	5,281	0.42	ROUSSEAU	26	1,459	0.11
BERNARD	2	2,790	0.22	GUERIN	27	1,446	0.11
DURAND	3	2,611	0.21	GAUTHIER	28	1,442	0.11
PETIT	4	2,591	0.20	GARNIER	29	1,396	0.11
THOMAS	5	2,319	0.18	ANDRE	30	1,293	0.10
MOREAU	6	2,303	0.18	DUPONT	31	1,287	0.10
RICHARD	7	2,280	0.18	PERRIN	32	1,281	0.10
ROBERT	8	2,230	0.18	MORIN	33	1,274	0.10
DUBOIS	9	2,186	0.17	MERCIER	34	1,269	0.10
LAURENT	10	2,039	0.16	LEFEVRE	35	1,266	0.10
ROUX	11	1,873	0.15	CHEVALIER	36	1,239	0.10
MICHEL	12	1,828	0.14	ROBIN	37	1,216	0.10
SIMON	13	1,820	0.14	MARCHAND	38	1,186	0.09
BERTRAND	14	1,715	0.13	MATHIEU	39	1,183	0.09
FAURE	15	1,666	0.13	CLEMENT	40	1,166	0.09
LEROY	16	1,664	0.13	GIRAUD	41	1,162	0.09
DAVID	17	1,610	0.13	LEGRAND	42	1,140	0.09
GIRARD	18	1,602	0.13	HENRY	43	1,138	0.09
BLANC	19	1,586	0.12	BRUN	44	1,132	0.09
BONNET	20	1,577	0.12	ROUSSEL	45	1,116	0.09
FOURNIER	21	1,565	0.12	GAUTIER	46	1,110	0.09
LEFEBVRE	21	1,565	0.12	NICOLAS	47	1,108	0.09
LAMBERT	23	1,514	0.12	MEUNIER	48	1,091	0.09
VINCENT	24	1,481	0.12	FRANCOIS	49	1,089	0.09
MOREL	25	1,460	0.11	DENIS	50	1,080	0.08

Notes: This table provides the list of the 50 most frequent surnames in the MPF database. Shares are in percent.

Table B.5. Distribution of Unique Surnames

Occurrences	Frequency	Share
1	83,140	45.58
2–5	63,313	34.71
6–10	16,738	9.18
11–20	9,899	5.43
21–50	5,933	3.25
51–100	1,862	1.02
101–1000	1,451	0.80
1001–2000	46	0.03
2001–5000	9	0.00
> 5000	1	0.00

Notes: This table provides the distribution of unique surnames in the MPF database. *Occurrences* refers to the number of times a unique surname appears, while *Frequency* refers to the number of surnames in each group. Shares are in percent, and are relative to the total number of unique surnames (182,392).

Table B.6. Comparison of the Most Frequent Surnames in the MPF and INSEE Databases

Dataset Cohorts	A. MPF All		B. MPF 1891–1900		C. INSEE 1891–1900	
	Rank	Share	Rank	Share	Rank	Share
Surname						
MARTIN	1	0.42	1	0.42	1	0.39
BERNARD	2	0.22	2	0.22	2	0.21
DURAND	3	0.21	4	0.20	4	0.18
PETIT	4	0.20	3	0.21	3	0.18
THOMAS	5	0.18	6	0.18	5	0.18
MOREAU	6	0.18	7	0.18	7	0.17
RICHARD	7	0.18	5	0.18	6	0.17
ROBERT	8	0.18	9	0.17	8	0.16
DUBOIS	9	0.17	8	0.17	9	0.16
LAURENT	10	0.16	10	0.16	10	0.16

Notes: This table provides the list of the 10 most frequent surnames in the MPF database in Panel A, in the MPF database among the MPFs born between 1891 and 1900 in Panel B, and in the INSEE surname file (INSEE, 2012) among individuals born between 1891 and 1900. Shares are in percent of all MPF records (1,270,865).

Table B.7. Most Frequent First Names

First name	Rank	Frequency	Share	First name	Rank	Frequency	Share
JEAN	1	31,572	2.48	CLAUDE	26	4,045	0.32
PIERRE	2	21,894	1.72	LUCIEN	27	3,673	0.29
LOUIS	3	20,266	1.59	VICTOR	28	3,492	0.27
JOSEPH	4	16,496	1.30	JEAN PIERRE	29	3,442	0.27
FRANCOIS	5	16,395	1.29	RENE	30	3,406	0.27
JEAN MARIE	6	14,961	1.18	LOUIS JOSEPH	31	3,327	0.26
HENRI	7	12,979	1.02	JACQUES	32	3,259	0.26
JEAN BAPTISTE	8	11,687	0.92	LOUIS MARIE	33	3,186	0.25
ANTOINE	9	9,185	0.72	ALFRED	34	3,180	0.25
EMILE	10	8,480	0.67	ALEXANDRE	35	3,155	0.25
PAUL	11	7,783	0.61	ETIENNE	36	3,131	0.25
EUGENE	12	7,739	0.61	JEAN FRANCOIS	37	3,127	0.25
AUGUSTE	13	7,390	0.58	ERNEST	38	3,109	0.24
JULES	14	7,288	0.57	ALPHONSE	39	2,988	0.24
GEORGES	15	7,145	0.56	YVES MARIE	40	2,915	0.23
CHARLES	16	7,061	0.56	JULIEN	41	2,749	0.22
LEON	17	6,858	0.54	GASTON	42	2,624	0.21
PIERRE MARIE	18	6,432	0.51	FERNAND	43	2,514	0.20
JOSEPH MARIE	19	6,092	0.48	JEAN JOSEPH	44	2,477	0.19
ALBERT	20	5,408	0.43	EDOUARD	45	2,436	0.19
FRANCOIS MARIE	21	5,324	0.42	GABRIEL	46	2,435	0.19
MARCEL	22	5,242	0.41	GUSTAVE	47	2,335	0.18
JEAN LOUIS	23	5,116	0.40	MARIUS	48	2,221	0.17
ANDRE	24	4,622	0.36	LEONARD	49	2,182	0.17
MAURICE	25	4,229	0.33	HENRI JOSEPH	50	2,167	0.17

Notes: This table provides the list of the 50 most frequent first names in the MPF database. Shares are in percent of all MPF records (1,270,865).

Table B.8. Distribution of Unique First Names

Occurrences	Frequency	Share
1	170,510	74.89
2–5	41,710	18.32
6–11	6,828	3.00
11–20	3,697	1.62
21–50	2,544	1.12
51–100	1,042	0.46
101–1,000	1,241	0.55
1,001–2,000	48	0.02
2,001–5,000	30	0.01
5,001–10,000	15	0.01
10,001–20,000	5	0.00
20,001–40,000	3	0.00

Notes: This table provides the distribution of unique first names in the MPF database. *Occurrences* refers to the number of times a unique first name appears, while *Frequency* refers to the number of first names in each group. Shares are in percent, and are relative to the total number of unique first names (227,673).

Table B.9. Types of Alternative Names

Type	Frequency	Share
No alternative name	1,265,460	99.57
Other name	259	0.02
Alias	4,991	0.39
Maiden name	44	0.00
Married name	111	0.01

Notes: This table provides the list and frequencies of alternative names in the MPF database. Shares are in percent of all MPF records (1,433,739).

Table B.10. Distribution of Missing Recruitment Class Information

Case	Records	Share
Class available and in bounds ± 4 years	1,238,165	97.43
Class missing, imputed from birth year	18,208	1.43
Class out of bound (± 4 years), imputed from birth year	14,089	1.11
Class missing, civilian	245	0.02
Class missing, woman	157	0.01

Notes: This table provides the distribution of missing recruitment class information in the MPF database. Shares are in percent of all MPF records (1,270,864).

Table B.11. Distribution of Military Ranks

Rank	Frequency	Share	Rank	Frequency	Share
A. Enlisted			B. NCOs		
SOLDAT	870,324	68.80	CAPORAL	104,952	8.30
CHASSEUR	55,663	4.40	SERGEANT	73,123	5.78
CANONNIER	42,345	3.35	SOUS-LIEUTENANT	19,622	1.55
SAPEUR	19,040	1.51	ADJUDANT	12,801	1.01
MATELOT	8,392	0.66	MARECHAL DES LOGIS	10,365	0.82
CAVALIER	1,805	0.14	BRIGADIER	8,359	0.66
CHAUFFEUR	1,420	0.11	MAITRE	5,052	0.40
MEDECIN	1,261	0.10	QUARTIER-MAITRE	2,132	0.17
GENDARME	713	0.06	CHEF	1,553	0.12
TRAVAILLEUR	532	0.04	SECOND MAITRE	955	0.08
TIRAILLEUR	477	0.04	PREMIER-MAITRE	193	0.02
INFIRMIER	329	0.03	SOUS-CHEF	92	0.01
GARDE	187	0.01	MAJOR	29	0.00
PHARMACIEN	111	0.01	SOUS-INTENDANT	24	0.00
ARTIFICIER	107	0.01			
MARECHAL FERRANT	104	0.01	C. COs		
VETERINAIRE	101	0.01	LIEUTENANT	10,525	0.83
PRETRE	74	0.01	CAPITAINE	7,864	0.62
MECANICIEN	60	0.00	ASPIRANT	2,738	0.22
INFIRMIERE	57	0.00	COMMANDANT	492	0.04
AUTRE	53	0.00	OFFICIER	420	0.03
MUSICIEN	49	0.00	COLONEL	169	0.01
ELEVE	35	0.00	GENERAL	90	0.01
TELEPHONISTE	33	0.00			
COMMIS	27	0.00	D. General Ranks		
AVIATEUR	22	0.00	Enlisted	1,003,373	79.33
INGENIEUR	14	0.00	NCOs	239,252	18.91
COMISSAIRE	14	0.00	COs	22,298	1.76
DOUANIER	13	0.00			
PAYEUR	11	0.00			

Notes: This table provides the distribution of military ranks in the MPF database. *NCOs* stands for *Non Commissioned Officers* and *COs*, for *Commissioned Officers*. Shares are in percent of all MPF records for which a rank is available (1,264,923).

Table B.12. Distribution of Military Units

Unit	Frequency	Share
A. Infantry		
REGIMENT D'INFANTERIE	819,238	64.91
REGIMENT D'INFANTERIE TERRITORIALE	52,642	4.17
BATAILLON DE CHASSEURS A PIED	51,175	4.05
BATAILLON DE CHASSEURS ALPINS	25,254	2.00
BATAILLON DE CHASSEURS	17,653	1.40
B. Artillery		
REGIMENT D'ARTILLERIE	32,372	2.56
REGIMENT D'ARTILLERIE DE CAMPAGNE	17,992	1.43
REGIMENT D'ARTILLERIE LOURDE	16,236	1.29
REGIMENT D'ARTILLERIE A PIED	6,913	0.55
GROUPE D'ARTILLERIE	3,674	0.29
C. Cavalry		
REGIMENT DE DRAGONS	6,305	0.5
REGIMENT DE CHASSEURS	4,214	0.33
REGIMENT DE CUIRASSIERS	2,826	0.22
REGIMENT DE HUSSARDS	2,681	0.21
REGIMENT DE CHASSEURS A CHEVAL	1,676	0.13
D. Engineering		
REGIMENT DU GENIE	26,856	2.13
E. Other		
ESCADRON DU TRAIN DES EQUIPAGES MILITAIRES	10,366	0.82
SECTION D'INFIRMIERS MILITAIRES	6,880	0.55
COMMIS ET OUVRIERS MILITAIRES D'ADMINISTRATION	5,389	0.43
DEPOT	2,640	0.21

Notes: This table provides the distribution of military units in the MPF database for units with more than 2,000 MPs records. Shares are in percent of all MPF records for which a military unit is available (1,262,211).

Table B.13. Most Frequent Municipalities

Municipality	Département	Rank	Frequency	Share
PARIS	SEINE	1	64,988	5.14
LYON	RHONE	2	8,851	0.70
MARSEILLE	BOUCHES-DU-RHONE	3	8,188	0.65
LILLE	NORD	4	5,869	0.46
BORDEAUX	GIRONDE	5	5,822	0.46
LE HAVRE	SEINE-INFERIEURE	6	3,859	0.31
ROUBAIX	NORD	7	3,474	0.28
SAINT-ETIENNE	LOIRE	8	3,446	0.27
REIMS	MARNE	9	3,442	0.27
NANTES	LOIRE-INFERIEURE	10	3,376	0.27
TOULOUSE	HAUTE-GARONNE	11	2,863	0.23
ROUEN	SEINE-INFERIEURE	12	2,751	0.22
NANCY	MEURTHE-ET-MOSELLE	13	2,614	0.21
BREST	FINISTERE	14	2,395	0.19
NICE	ALPES-MARITIMES	15	2,245	0.18
AMIENS	SOMME	16	2,199	0.17
DUNKERQUE	NORD	17	2,127	0.17
CALAIS	PAS-DE-CALAIS	18	2,096	0.17
LIMOGES	HAUTE-VIENNE	19	2,019	0.16
TOURCOING	NORD	20	1,912	0.15
ORLEANS	LOIRET	21	1,726	0.14
DIJON	COTE-D'OR	22	1,685	0.13
RENNES	ILLE-ET-VILAINE	23	1,629	0.13
ANGERS	MAINE-ET-LOIRE	24	1,568	0.12
TOULON	VAR	25	1,533	0.12
SAINT-DENIS	SEINE	26	1,517	0.12
BOULOGNE-SUR-MER	PAS-DE-CALAIS	27	1,494	0.12
MONTPELLIER	HERAULT	28	1,451	0.11
TROYES	AUBE	29	1,413	0.11
GRENOBLE	ISERE	30	1,384	0.11
BESANCON	DOUBS	31	1,353	0.11
NIMES	GARD	32	1,352	0.11
VERSAILLES	SEINE-ET-OISE	33	1,328	0.10
TOURS	INDRE-ET-LOIRE	34	1,303	0.10
LE MANS	SARTHE	35	1,276	0.10
SAINT-QUENTIN	AISNE	36	1,214	0.10
LORIENT	MORBIHAN	37	1,205	0.09
ARMENTIERES	NORD	38	1,157	0.09
BOURGES	CHER	39	1,049	0.08
CAEN	CALVADOS	40	1,034	0.08

Notes: This table provides the list of the 40 most frequent municipalities in the MPF database in 1911 geography. While Paris appears as a single municipality in this table, MPF information is broken down across 20 municipal arrondissements in the database. Shares are in percent.

Table B.14. Distribution of Unique Municipalities

Occurrences	Frequency	Share
1	669	0.05
2–5	3,412	0.99
6–10	6,014	3.82
11–20	9,504	11.31
21–50	10,503	26.48
51–100	3,729	20.27
101–1,000	1,572	24.14
1,001–2,000	22	2.42
2,001–5,000	14	3.08
> 5,000	5	7.42

Notes: This table provides the distribution of unique municipalities in the MPF database. *Occurrences* refers to the number of times a unique municipality appears, while *Frequency* refers to the number of municipalities in each group. Shares are in percent, and are relative to the total number of unique municipalities with at least one MPF (35,544).

Table B.15. Département-Level Military Fatalities and Death Rates (1/2)

Département	MPFs		Death rates		Difference
	BG2022	GG2023	BG2022	GG2023	
01 AIN	11,469	12,053	15.43	16.22	0.79
02 AISNE	15,579	17,068	13.89	15.21	1.33
03 ALLIER	13,748	14,481	16.43	17.31	0.88
04 BASSES-ALPES	4,104	4,236	18.17	18.75	0.58
05 HAUTES-ALPES	4,091	4,303	16.58	17.43	0.86
06 ALPES-MARITIMES	6,502	6,882	6.39	6.76	0.37
07 ARDECHE	13,784	14,423	21.26	22.25	0.99
08 ARDENNES	8,590	9,046	11.79	12.41	0.63
09 ARIEGE	7,530	7,877	19.45	20.35	0.90
10 AUBE	7,282	7,606	14.69	15.35	0.65
11 AUDE	9,589	9,961	14.97	15.55	0.58
12 AVEYRON	14,985	15,578	20.58	21.40	0.81
13 BOUCHES-DU-RHONE	13,201	13,979	6.70	7.10	0.39
14 CALVADOS	13,649	14,550	16.38	17.46	1.08
15 CANTAL	8,231	8,815	20.41	21.85	1.45
16 CHARENTE	10,509	11,301	14.68	15.79	1.11
17 CHARENTE-INFERIEURE	12,951	13,871	14.10	15.10	1.00
18 CHER	11,787	12,528	17.00	18.07	1.07
19 CORREZE	12,667	13,306	21.94	23.05	1.11
20 CORSE	9,390	9,786	17.29	18.02	0.73
21 COTE-D'OR	10,799	11,410	14.73	15.56	0.83
22 COTES-DU-NORD	25,633	26,920	22.19	23.31	1.11
23 CREUSE	9,650	10,122	19.96	20.94	0.98
24 DORDOGNE	16,186	16,685	18.27	18.83	0.56
25 DOUBS	9,972	10,552	14.41	15.25	0.84
26 DROME	9,250	9,649	14.89	15.53	0.64
27 EURE	10,255	10,860	14.95	15.83	0.88
28 EURE-ET-LOIR	10,260	11,350	17.70	19.58	1.88
29 FINISTERE	28,887	30,276	17.05	17.87	0.82
30 GARD	10,818	11,360	11.95	12.55	0.60
31 HAUTE-GARONNE	12,123	12,375	13.78	14.07	0.29
32 GERS	7,436	7,867	16.04	16.97	0.93
33 GIRONDE	20,151	20,917	11.18	11.60	0.42
34 HERAULT	10,890	11,277	9.81	10.16	0.35
35 ILLE-ET-VILAINE	23,055	24,102	17.18	17.97	0.78
36 INDRE	10,645	10,994	17.95	18.54	0.59
37 INDRE-ET-LOIRE	10,012	10,491	13.70	14.36	0.66
38 ISERE	16,868	17,603	13.79	14.39	0.60
39 JURA	8,795	9,177	16.38	17.09	0.71
40 LANDES	11,484	11,906	18.81	19.50	0.69
41 LOIR-ET-CHER	9,943	11,053	18.01	20.02	2.01
42 LOIRE	19,204	20,068	13.33	13.93	0.60
43 HAUTE-LOIRE	11,245	11,690	18.74	19.48	0.74
44 LOIRE-INFERIEURE	22,830	23,938	16.02	16.80	0.78
45 LOIRET	13,827	14,216	18.01	18.52	0.51

Notes: This table provides the département-level number of MPFs and military death rates in Boehnke and Gay (2022) (BG2022) and in the present study (GG2023). The GG2023 data only contain MPFs born in France (outside Alsace-Lorraine), for which the département of birth is known, who were neither civilian nor women, and who died between 1914 and 1919. Military death rates are in percent and are calculated by dividing the number of MPFs by the number of men aged 15–44 per the population census of 1911. The BG2022 data are from Boehnke and Gay (2020).

Table B.16. Département-Level Military Fatalities and Death Rates (2/2)

Département	MPFs		Death rates		Difference	
	BG2022	GG2023	BG2022	GG2023		
46	LOT	7,200	7,597	18.32	19.33	1.01
47	LOT-ET-GARONNE	7,456	7,820	13.52	14.18	0.66
48	LOZERE	6,185	6,394	28.61	29.57	0.97
49	MAINE-ET-LOIRE	16,460	16,563	15.04	15.14	0.09
50	MANCHE	17,500	18,395	16.59	17.44	0.85
51	MARNE	14,487	14,920	14.40	14.83	0.43
52	HAUTE-MARNE	7,541	7,859	16.64	17.34	0.70
53	MAYENNE	13,226	12,825	20.82	20.19	-0.63
54	MEURTHE-ET-MOSELLE	14,412	14,928	8.90	9.22	0.32
55	MEUSE	9,457	9,722	12.01	12.35	0.34
56	MORBIHAN	23,307	24,178	19.79	20.53	0.74
58	NIEVRE	11,011	11,474	19.49	20.31	0.82
59	NORD	51,279	53,074	11.29	11.69	0.40
60	OISE	12,758	13,265	14.28	14.85	0.57
61	ORNE	10,490	11,060	16.78	17.69	0.91
62	PAS-DE-CALAIS	31,992	33,016	13.50	13.93	0.43
63	PUY-DE-DOME	16,531	17,388	15.25	16.04	0.79
64	BASSES-PYRENEES	13,887	14,352	15.59	16.12	0.52
65	HAUTES-PYRENEES	6,106	6,355	13.89	14.46	0.57
66	PYRENEES-ORIENTALES	6,901	7,148	14.64	15.16	0.52
69	RHONE	18,704	19,646	8.76	9.20	0.44
70	HAUTE-SAONE	8,836	9,302	16.89	17.78	0.89
71	SAONE-ET-LOIRE	21,936	23,003	17.46	18.31	0.85
72	SARTHE	13,275	13,821	15.58	16.22	0.64
73	SAVOIE	9,287	9,720	17.26	18.06	0.80
74	HAUTE-SAVOIE	9,824	10,197	17.42	18.08	0.66
75	SEINE	78,434	81,272	7.19	7.45	0.26
76	SEINE-INFERIEURE	27,112	28,277	14.35	14.97	0.62
77	SEINE-ET-MARNE	12,311	12,886	15.31	16.03	0.72
78	SEINE-ET-OISE	19,402	19,684	10.22	10.37	0.15
79	DEUX-SEVRES	12,404	12,413	17.24	17.26	0.01
80	SOMME	17,093	17,509	16.01	16.40	0.39
81	TARN	10,304	10,689	15.36	15.94	0.57
82	TARN-ET-GARONNE	5,373	5,704	14.13	15.00	0.87
83	VAR	5,894	6,219	6.88	7.26	0.38
84	VAUCLUSE	6,233	6,501	12.21	12.73	0.52
85	VENDEE	19,040	19,513	21.05	21.57	0.52
86	VIENNE	11,953	12,279	17.04	17.51	0.46
87	HAUTE-VIENNE	14,324	14,719	17.43	17.91	0.48
88	VOSGES	15,786	16,300	15.65	16.16	0.51
89	YONNE	10,305	10,764	17.63	18.42	0.79
90	TERRITOIRE-DE-BELFORT	1,779	2,591	6.00	8.74	2.74
	Mean	13,881	14,481	15.56	16.27	0.72
	Total	1,207,651	1,259,850	13.76	14.36	0.59

Notes: This table provides the département-level number of MPFs and military death rates in Boehnke and Gay (2022) (BG2022) and in the present study (GG2023). The GG2023 data only contain MPFs born in France (outside Alsace-Lorraine), for which the département of birth is known, who were neither civilian nor women, and who died between 1914 and 1919. Military death rates are in percent and are calculated by dividing the number of MPFs by the number of men aged 15–44 per the population census of 1911. The BG2022 data are from Boehnke and Gay (2020).

Table B.17. Military Death Rates and Pre-War County Characteristics

Dependent variable	Military death rate		
	(1)	(2)	(3)
Share rural population	0.13*** [0.01]	0.14*** [0.03]	0.15*** [0.03]
Share born in county	0.12*** [0.03]	0.11*** [0.03]	0.13*** [0.04]
Female labour force participation		-0.03 [0.04]	-0.04 [0.04]
Share girls aged 5–19 in school		0.11 [0.07]	0.06 [0.06]
Total fertility rate		0.01** [0.01]	0.02 [0.01]
Personal wealth (10,000 francs)		0.04** [0.02]	0.06 [0.04]
Other characteristics	No	Yes	Yes
Military region FE	No	No	Yes
Counties	87	87	87
R ²	0.751	0.830	0.881

Notes: This table reports OLS coefficients from regressing military death rates on various pre-war county characteristics measured in 1911. *Other characteristics* include average height, population, the share of men working in industry, in agriculture, the share of the literate population, and the average direct taxes per inhabitant. Robust standard errors are in brackets.

*** Significant at the 1% level. ** Significant at the 5% level. * Significant at the 10% level.

Table B.18. Municipalities with the Highest Military Death Rates

Rank	Département	Commune	Population	MPFs	Death rates
1	EURE	JUMELLES	122	71	58,20
2	CHARENTE-INFERIEURE	SAINT-HILAIRE-DU-BOIS	213	108	50,70
3	CALVADOS	SAINT-SAMSON	145	59	40,69
4	RHONE	SAINT-JEAN-DES-VIGNES	152	61	40,13
5	YONNE	SCEAUX	248	94	37,90
6	LOT	SAINT-PANTALEON	186	70	37,63
7	SEINE-INFERIEURE	IMBLEVILLE	338	124	36,69
8	COTES-D'ARMOR	L'HERMITAGE-LORGE	925	298	32,22
9	HAUTE-GARONNE	SAINT-VINCENT	97	30	30,93
10	INDRE-ET-LOIRE	SAINT-ROCH	226	68	30,09
11	HAUTE-MARNE	ROUELLES	95	28	29,47
12	MEURTHE-ET-MOSELLE	MEREVILLE	241	71	29,46
13	CHER	SAINT-SYMPHORIEN	307	89	28,99
14	COTE-D'OR	SAINT-SAUVEUR	211	61	28,91
15	CANTAL	SAINTE-MARIE	355	102	28,73
16	NIEVRE	HERY	156	42	26,92
17	DOUBS	LE PUY	60	16	26,67
18	AISNE	LUGNY	169	44	26,04
19	OISE	BIENVILLE	211	54	25,59
20	AIN	SAINT-SULPICE	175	44	25,14
21	GERS	SAINT-MARTIN	255	59	23,14
22	BASSES-PYRENEES	BEYRIE-EN-BEARN	105	24	22,86
23	NORD	CAPELLE	208	47	22,60
24	JURA	ESSERVAL-COMBE	40	9	22,50
25	DOUBS	SANTOCHE	24	5	20,83
26	AISNE	MOULINS	225	46	20,44
27	JURA	VALFIN-SUR-VALOUSE	155	31	20,00
28	GERS	LAHITTE	125	24	19,20
29	GARD	CAUSSE-BEGON	37	7	18,92
30	ALPES-MARITIMES	AMIRAT	49	9	18,37
31	PAS-DE-CALAIS	RECOURT	115	21	18,26
32	CHER	CHAUMONT	154	28	18,18
33	CHARENTE-INFERIEURE	SAINT-MEDARD	117	21	17,95
34	CANTAL	SAINT-MARTIAL	213	38	17,84
35	CALVADOS	CLINCHAMPS-SUR-ORNE	502	88	17,53
36	HAUTE-SAVOIE	MARCELLAZ	370	64	17,30
37	DOUBS	BRETIGNEY	47	8	17,02
38	MEURTHE-ET-MOSELLE	ROMAIN	36	6	16,67
39	PAS-DE-CALAIS	MANINGHEM	133	22	16,54
40	DORDOGNE	SAINT-CASSIEN	127	21	16,54
41	MARNE	NOIRLIEU	195	31	15,90
42	CALVADOS	BEAULIEU	160	25	15,63
43	AISNE	FRESNES	287	44	15,33
44	CORSE	LANO	59	9	15,25
45	DOUBS	CHATEAUVIEUX-LES-FOSSES	33	5	15,15
46	JURA	MONTEPLAIN	40	6	15,00
47	CREUSE	SAINT-PRIEST	781	117	14,98
48	LANDES	SARRON	147	22	14,97
49	ORNE	LE MENIL-VICOMTE	67	10	14,93
50	SAVOIE	HAUTEVILLE	305	45	14,75

Notes: This table provides the list of the municipalities with the highest military death rates. The data are based on MPFs born in France (outside Alsace-Lorraine), for which the municipality of birth is known, who were neither civilian nor women, and who died between 1914 and 1919. Military death rates are in percent and are calculated by dividing the number of MPFs by the municipality's population in the census of 1911.

Table B.19. Variables in the Military Death Rates Databases

Dataset	Variable	Description	Values
Département level	<code>dep_1911</code>	Département identifier [TRF-GIS 1911]	String
	<code>dep_name_1911</code>	Département name [TRF-GIS 1911]	String
	<code>deathrate</code>	Military death rate (%) [MPF / male population 15-44 in 1911]	Numeric
	<code>deathrate_total</code>	Military death rate (%) [MPF / population in 1911]	Numeric
Municipality level	<code>geofla_2015</code>	Municipality identifier [GEOFLA 2015]	String
	<code>insee_2015</code>	Municipality identifier [INSEE 2015]	String
	<code>dep_2015</code>	Département identifier [INSEE 2015]	String
	<code>dep_name_2015</code>	Département name [INSEE 2015]	String
	<code>deathrate</code>	Military death rate (%) [MPF / population in 1911]	Numeric

References

- Boehnke, Jörn, and Victor Gay.** 2022. “The Missing Men. World War I and Female Labor Force Participation.” *Journal of Human Resources*, 57(4): 1209–41.
- Boehnke, Jörn, and Victor Gay.** 2020. *Replication Data for: The Missing Men. World War I and Female Labor Force Participation [database]*. Harvard Dataverse. <https://doi.org/10.7910/DVN/AP1HZ8>.
- Fontaine, Arthur.** 1924. *L’Industrie Française Pendant la Guerre*. New Haven: Yale University Press.
- Gay, Victor.** 2020. *TRF-GIS Military Subdivisions (1874–1940) [database]*. Harvard Dataverse. <https://doi.org/10.7910/DVN/TAMQAG>.
- Gay, Victor.** 2023. “The Intergenerational Transmission of World War I on Female Labor.” *The Economic Journal*, Forthcoming.
- IGN.** 2015. *Geofla@Communes édition 2015 France Métropolitaine [database]*. Paris: IGN. <https://geoservices.ign.fr/geofla>.
- INSEE.** 2012. *Fichiers des Noms de Famille de 1891 à 2000, Édition 2008 [database]*. Paris: INSEE [producer], ADISP [distributor]. <https://data.progedo.fr/studies/doi/10.13144/lil-0697>.