



HAL
open science

New synonymies and distribution records of some longhorn beetles (Coleoptera, Cerambycidae) occurring in South Africa

Riana Bate, Michael D. Bate

► **To cite this version:**

Riana Bate, Michael D. Bate. New synonymies and distribution records of some longhorn beetles (Coleoptera, Cerambycidae) occurring in South Africa. *Faunitaxys*, 2023, 11 (37), pp.1-9. hal-04124291

HAL Id: hal-04124291

<https://hal.science/hal-04124291>

Submitted on 9 Jun 2023

HAL is a multi-disciplinary open access archive for the deposit and dissemination of scientific research documents, whether they are published or not. The documents may come from teaching and research institutions in France or abroad, or from public or private research centers.

L'archive ouverte pluridisciplinaire **HAL**, est destinée au dépôt et à la diffusion de documents scientifiques de niveau recherche, publiés ou non, émanant des établissements d'enseignement et de recherche français ou étrangers, des laboratoires publics ou privés.



Distributed under a Creative Commons Attribution - NonCommercial - NoDerivatives 4.0 International License

Faunitaxys

*Revue de Faunistique, Taxonomie et Systématique
morphologique et moléculaire*



Volume 11
Numéro 37

Juin 2023

ISSN (Print) : 2269 - 6016
ISSN (Online) : 2970 - 4960
Dépôt légal : Juin 2023

Faunitaxys

*Revue de Faunistique, Taxonomie et Systématique
morphologique et moléculaire*

ZooBank : <http://zoobank.org/79A36B2E-F645-4F9A-AE2B-ED32CE6771CC>

Directeur de la publication, rédacteur, conception graphique et PAO:

Lionel Delaunay

Cette revue ne peut pas être vendue

Elle est distribuée par échange aux institutions (version papier)

et sur simple demande aux particuliers (format PDF)

à l'adresse suivante:

AFCFF (Association française de Cartographie de la Faune et de la Flore)

28, rue Voltaire, F- 42100 Saint Etienne

E-mail: faunitaxys.journal@gmail.com

Elle est disponible librement au téléchargement à partir du site:

<http://faunitaxys.fr/>

La parution de *Faunitaxys* est apériodique

Faunitaxys est indexé dans / *Faunitaxys* is indexed in:

- **Zoological Record**

Articles and nomenclatural novelties are referenced by:

- **ZooBank** (<http://zoobank.org>)

Online Archives:

- **HAL** (<https://hal.archives-ouvertes.fr>)

- **Internet Archive** (<https://archive.org>)

Imprimée sur les presses de SPEED COPIE, 6, rue Tréfilerie, F- 42100 Saint-Etienne

Imprimé le 06 06 2023

New synonymies and distribution records of some longhorn beetles (Coleoptera, Cerambycidae) occurring in South Africa

RIANA BATE (1,*) & MICHAEL D. BATE (2)

(1 & 2) Geovicon Environmental (Pty) Ltd. P.O. Box 4050, Middelburg, Mpumalanga, 1050, South Africa.

(1) - E-mail: rbate1960@gmail.com - Orcid: <https://orcid.org/0000-0003-1084-359X> - ZooBank: <http://zoobank.org/C7AF5A68-39B5-44F2-8B5F-E469AA78EDA4>

(2) - ZooBank: <http://zoobank.org/AF79BD88-851A-4340-87A9-1E22AB3DDDF69>

* Corresponding author

Keywords:

Coleoptera;
Cerambycidae;
Duffyoemida;
Pectoctenus;
Swaziphanes;
Zamium;
taxonomy;
new synonymies;
distribution records;
host plants.

Abstract. – *Zamium bicolor* Distant, 1898 (currently *Alocerus bicolor*) is transferred to *Pectoctenus* and considered as the new senior subjective synonym of *Pectoctenus bryanti* Lepesme, 1948. *Obrium rudebecki* Tippmann, 1959 is transferred to the genus *Duffyoemida* and considered as the new senior subjective synonym of *Duffyoemida barkeri* Martins, 1977. The following additional new subjective synonym is proposed: *Zamium procidium* Pascoe, 1864, is a junior synonym of *Zamium bimaculatum* (Fabricius, 1781). *Stenobrium punctatum* Adlbauer, 2007, *Zambizus jeannae* Juhel, 2016, *Swaziphanes bimaculatus* Adlbauer, 2002, *Planodema bimaculata* (Aurivillius, 1916), *Stenidea (Amblesthidus) lateralis* (Aurivillius, 1908) and *Subinermexocentrus allardi* Breuning, 1972, are recorded from South Africa for the first time. Host plants of *Duffyoemida rudebecki* (Tippmann, 1959), *Swaziphanes bimaculatus* and *Zamium bimaculatum* are reported for the first time.

Bate R. & Bate M. D., 2023. – New synonymies and distribution records of some longhorn beetles (Coleoptera, Cerambycidae) occurring in South Africa. *Faunitaxys*, 11(37): 1 – 9.

DOI: [https://doi.org/10.57800/faunitaxys-11\(37\)](https://doi.org/10.57800/faunitaxys-11(37))

ZooBank: <http://zoobank.org/29946DE4-5458-40C7-9801-AD17F7E89254>

Received: 04/05/2023 – Revised: 02/06/2023 – Accepted: 03/06/2023

Introduction

South Africa is home to a diverse assemblage of longhorn beetles (Cerambycidae), which vary in length from 3.5 mm to c. 120 mm, with more than 820 known species (Bate & Bate, unpublished). Although many of these species are endemic to South Africa, most are more widespread in sub-Saharan Africa. A few species have been introduced, either deliberately as biological control agents of alien invasive plants (e.g. Klein, 2011) or inadvertently through human activities (e.g. Stals, 2011).

Research on South African Cerambycidae has in recent years focused on the description of new taxa and/or the proposal of new synonymies (e.g. Bjørnstad *et al.*, 2016; Sudre *et al.*, 2016; Bjørnstad, 2017; Maquart *et al.*, 2018; Sudre & Delatour, 2019; Sudre *et al.*, 2019).

In this paper, we propose new synonymies based on the comparison of type specimens. and provide new localities and host plant records for Cerambycidae in South Africa based on material in the South African National Collection of Insects, Pretoria.

Material and methods

Abbreviations of specimen depositories

BMNH: The Natural History Museum, London, United Kingdom.

DMSA: Durban Natural Science Museum, Durban, South Africa.
JBC: Johnnie van den Berg Private Collection, Potchefstroom, South Africa.
MZLU: Entomological Collections, Lund University, Lund, Sweden.
NHRS: Swedish Museum of Natural History, Stockholm, Sweden.
RMCA: Royal Museum for Central Africa, Tervuren, Belgium.
SANC: South African National Collection of Insects, Pretoria, South Africa.
TMSA: Ditsong National Museum of Natural History, Pretoria, South Africa.

Specimens physically examined by us are deposited in SANC, TMSA, JBC and DMSA. High-resolution photographs of dorsal, lateral and/or ventral views of type specimens were obtained from those institutions in which they are housed.

Label data of type specimens are cited verbatim: the contents of a single label are enclosed in double quotation marks [“”]; a vertical bar [|] separates subsequent lines on a single label; subsequent labels are separated by a double vertical bar [||]; and clarifications and information not on labels are provided between square brackets. The label data of non-type specimens are presented in a standardised format. SANC accession books contain associated bio-ecological information not on specimen labels; SANC accession numbers are presented in bold letters and the corresponding information for each species follows the material examined section.

Reviewers :

Larry G. Bezark (USA) - ZooBank : <http://zoobank.org/25C35904-2035-4416-9534-8641C1551196>

Jérôme Sudre (France) - ZooBank : <http://zoobank.org/08184D6D-3B94-4C47-9706-7CCB7AC259AA>



This is an open access article under the terms of the Creative Commons Attribution-NonCommercial-NoDerivs License, which permits use and distribution in any medium, provided the original work is properly cited, the use is non-commercial and no modifications or adaptations are made.

Copyright 2023 The Authors. *Faunitaxys* published by Lionel Delaunay on behalf of the AFCFF (Association française de Cartographie de la Faune et de la Flore).

Results and discussion

Classification and family-group names and their authors are in accordance with Bouchard *et al.* (2011) and Bouchard & Bousquet (2020).

Family **Cerambycidae** Latreille, 1802

Subfamily **Spondylidinae** Audinet-Serville, 1832

Tribe **Anisarthrini** Mamaev & Danilevsky, 1973

Pectoctenus bicolor (Distant, 1898), **comb. nov.**

(Fig. 1)

= *Zamium bicolor* Distant, 1898: 369

= *Alocerus bicolor* (Distant, 1898); Ferreira, 1954: 367

= *Pectoctenus bryanti* Lepesme, 1948: 256, **n. syn.**

Type material examined

Zamium bicolor Distant, 1898: SYNTYPE ♂ (BMNH).

SOUTH AFRICA

Limpopo Province. Labels: “♂” || “Type” [red circle] || “Pienaars River, | Transvaal.” || “bicolor | Dist[ant]” || “Pien[aa]rs | Riv[er], | ([illegible])” || “Distant Coll. | 1911—383” || “[QR code] | NHMUK 013310002” (Fig. 1a).

Pectoctenus bryanti Lepesme, 1948: HOLOTYPE ♂ (BMNH).

ZIMBABWE

Harare Province. Labels: “Type” [red circle] || “Col light | Salisbury [= Harare] | 12.10.[19]09 | Ac. No 1950” || “45” || “43” || “23” || “Pres. by | Imp.Inst.Ent. | B.M.1947-434” || “Pectotenus | Bryanti | mihi | TYPE | P. Lepesme det.” || “[QR code] | NHMUK 013310003” (Fig. 1b).

Other material examined

SOUTH AFRICA

Eastern Cape Province

- 1 ♂ Transkei, Port St Johns, Silaka, 31°33'S 29°30'E, 23.xi.1987, S Endrödy-Younga (TMSA).

Northern Cape Province

- 1 ♀ PK le Roux Dam [Vanderkloof Dam], [30°01'S 24°43'E], 19–20.x.1970, Snyman & Jones (TMSA).

Gauteng

- 1 ♂ Pretoria, Rooideplaet VOPI [Vegetable & Ornamental Plant Institute], 25°35'S 28°22'E, 06.xi.2001, W Breytenbach (SANC).

- 1 ♂ Pretoria, 25°35'S 28°22'E, xii.1972, H Mayer; ?*Zamium bicolor*, det. P Téocchi, 1983 (SANC).

- 1 ♂ Pretoria, N.A.6, [25°36'S 28°21'E], v.1958, A.R.I. [Agricultural Research Institute] Pretoria; ?*Zamium bicolor*, det. P Téocchi, 1983 (SANC).

- 1 ♀ Pretoria N[orth], [25°40'S 28°10'E], 27.x.1943, G van Son (TMSA).

- 1 ♂ Pretoria, [25°35'S 28°22'E], 25.x.1976, W Haacke (TMSA).

KwaZulu-Natal

- 1 ♂ Mkuze [uMkhuze Game Reserve], 27°39'S 32°15'E, 10.xi.1981, PE Reavell (SANC).

- 1 ♂ Dukuduku Forest, [28°22'S 32°20'E], 20–21.xi.1956, Van Son & Martin (TMSA).

- 1 ♀ Midlands, Karkloof [Nature Reserve], 29°18'S 30°13'E, 13.xii.1989, S Endrödy-Younga (TMSA).

- 1 ♂ Durban, [29°51'S 31°01'E], 16.xi.2008, GF Leigh (TMSA).

Limpopo Province

- 1 ♂ Meletse Private Game Reserve, near Rooiberg, 24°38'S 27°39'E, 01–02.xii.2014, R Müller (TMSA).

- 1 ♂ Mogol Nature Reserve, Ellisras [= Lephalale] district, 23°58'S [recte 23°18'S] 27°45'E, 19–23.xi.1979, SJ van Tonder (SANC).

- 1 ♂ Punda Milia [= Punda Maria], NKW [Kruger National Park], [22°41'S 31°01'E], 11.xi.1969, T.W.D. [TW Drinkwater]; *Alocerus bicolor*, ?det. MC Ferreira (SANC).

Mpumalanga

- 1 ♀ Luipershoek Farm, near Roosenekal, 25°07'S 28°50'E, 22.xi.1989, LG le Roux (SANC).

- 1 ♂ 1 ♀ Presidentsrus, 25°45'S 29°19'E, 17.xi.2018, MD Bate, JM Bate (SANC).

North West Province

- 1 ♂ Rustenburg, [25°40'S 27°15'E], iii.1965, J vd M; ?*Zamium bicolor*, det. P Téocchi, 1983 (SANC).

- 1 ♂ Saartjiesnek, [25°45'S 27°56'E], xii.1983, E Holm (TMSA).

BOTSWANA

Central District

- 1 ♂ Serowe Farmer's Brigade, 22°25'S 26°44'E, 08.x.1988, P Forchhammer (SANC).

ZIMBABWE

Mashonaland West

- 1 ♀ 20 km W of Ngezi R[ecreational] P[ark], [18°36'S 30°18'E], 30.xi–02.xii.1998, A Kudrna Jr., ex Delahaye coll. (SANC).

Harare Province

- 1 ♀ Wingate [assumed golf course, Harare], [17°43'S 31°04'E], 16.x.1971, Duke (TMSA).

Mashonaland East

- 1 ♂ Marandellas [= Marondera], [18°11'S 31°32'E], xii.1965, Duke (TMSA).

Remarks. – In our opinion, Ferreira (1954: 367) correctly indicated that *Z. bicolor* could not continue to be allocated in *Zamium* Pascoe 1864, the genus where it was originally placed, based on the following morphological characteristics: “last joint of the palpi acuminate at the apex, antennae pectinate, starting from the third joint, eyes very big, antennal tubercles not chamfered” (Ferreira, 1954). These morphological characteristics together with the observed obtuse posterior angles of the pronotum conform to the characteristics of the genus *Pectoctenus*, rather than to the genus *Alocerus* as proposed by Ferreira (1954). Mulsant (1862) proposed the genus *Alocerus* for *A. fulvus* Mulsant, 1862 (currently, a junior synonym of *A. moesiacus* (Fivaldszky, 1837)), a Mediterranean species (Southern Europe and Northern Africa) (Sama, 1987; Verdugo Páez & Coello, 2003; Trócoli, 2018). The genus *Alocerus* is well defined by its habitus and especially by the short antennae in the male, with the pedicel almost equal to half the length of antennomere III, and the antero-external angles of antennomeres V–X toothed; the pronotum wider than long, widest at three-sevenths of its length measured from the base, with posterior angles almost directed outwards in the form of a small tooth (Mulsant, 1862).

The characteristics and distribution mentioned above differentiate *Alocerus* from the related genus *Pectoctenus* Fairmaire, 1896, which was proposed for *P. scalabrii* Fairmaire, 1896, a Madagascan and sub-Saharan species (Lepesme, 1948; Adlbauer, 2018). In *Pectoctenus*, the male antennae are short and thickened, the pedicel is short, the antero-external angles of antennomeres III–X acutely serrate (Fairmaire, 1896); and the pronotum is basely depressed, with the posterior angles obtuse.

The southern African distribution of *Z. bicolor* further suggests the placement in the genus *Pectoctenus*. As such, we propose *Z. bicolor* to be transferred to the genus *Pectoctenus*.

We examined the type specimens of *Zamium bicolor* Distant, 1898 and *Pectoctenus bryanti* Lepesme, 1948. They show no morphological differences which leads us to treat them as synonyms. *Pectoctenus bicolor* is thus a senior subjective synonym of *Pectoctenus bryanti*.

Based on the detailed description and figure of *Nannoprionus insignis* Aurivillius, 1907, it is evident that this species may also be a member of the genus *Pectoctenus*, but unfortunately the type specimen could not be located for confirmation.

Distribution. – Zimbabwe, Botswana, Namibia, South Africa: Eastern Cape Province, Gauteng, Kwazulu-Natal, Limpopo, Mpumalanga, North West Province, Northern Cape Province.

Subfamily **Cerambycinae** Latreille, 1802

Tribe **Callidiopini** Lacordaire, 1868

Stenobrium punctatum Adlbauer, 2007: 15

Material examined

SOUTH AFRICA

Mpumalanga

- 1 ♀ Presidentsrus, 25°45'33"S 29°19'04"E, 12.xii.2018. JM Bate, MD Bate (SANC).

ZAMBIA

North-Western Province

- 1 ♂ Nchila Wildlife Reserve, near Ikelenge, 11°14'09"S 24°19'01"E, 12–17.xi.2001, BD Gill, SMV Gussmann (SANC).

Distribution. – Tanzania: Morogoro Region (Adlbauer 2007); Zambia: North-Western Province; South Africa: Mpumalanga. First records from South Africa and Zambia.

Tribe **Hesperophanini** Mulsant, 1839

Swaziphanes bimaculatus Adlbauer, 2002: 2.

(Fig. 2)

Material examined

SOUTH AFRICA

Free State

- 1 ♂ Glen A.C. [Agricultural College], [28°50'S 26°48'E], 29.i.1960, GA Hepburn, **AcX 1044** (SANC).

Limpopo Province

- 1 ♀ Zebediela, [24°18'S 29°16'E], 26–30.x.1970, TW Drinkwater (SANC).

- 1 ♂ Kruger National Park, 24.iii.1960, GA Hepburn (SANC).

Mpumalanga

- 1 ♂ [Kruger National Park], Nwaswitshaka [near Skukuza], 24°59'S 31°35'E, 08.xii.1997, S Endrödy-Younga; *Swaziphanes bimaculatus*, det. K Adlbauer, 2012 (TMSA).

- 1 ♂ Kruger National Park, Skukuza, [25°01'S 31°36'E], 31.xii.1970, TW Drinkwater (SANC);

- 2 ♀ same data, but 27.xii.1970 (SANC); 1 ♂ same data, but 16.xii.1970 (SANC); 1 ♂ same data, but 02.xi.1971, TZ Malhize (SANC).

- 6 ♂, 6 ♀ Kruger National Park, Sand River firebreak road, 12.xii.1959, JH Grobler, **AcX 495** (SANC).

- 1 ♂, 1 ♀ Kruger National Park, Krokodilbrug [= Crocodile Bridge], [25°21'S 31°54'E], 25.xi.1971, TW Drinkwater, **AcX 2733** (SANC).

Data from SANC accession books

AcX 495: Cut from unidentified tree. Wood cut on 13.viii.1959. Beetle emerged on 12.x.1959.

AcX 1044: From wood of *Acacia* sp. (Fabaceae). **AcX 2733:** Ex *Schotia brachypetala* (Fabaceae).

Remarks. – Adlbauer (2002) described *Swaziphanes bimaculatus* based on male specimens from Swaziland (1♂) and Zimbabwe (1♂). Delatour *et al* (2020) presented a 'likely' ♀ specimen of *S. bimaculatus* from northern Mossel Bay,



Fig 1. *Pectoctenus bicolor* (Distant, 1898).

A. Syntype of *Zamium bicolor* Distant, 1898, ♂, length 15 mm (BMNH).

B. Holotype of *Pectoctenus bryanti* Lepesme, 1948, ♂, length 17 mm (BMNH).



Fig 2. *Swaziphanes bimaculatus* Adlbauer, 2002 (Scale bar = 5 mm).

A. ♀, length 16,4 mm (SANC). B. ♂, length 13,7 mm (SANC).

Eastern Cape Province, South Africa. From the excellent photograph provided (Delatour *et al.*, 2020: Fig. 7), it is evident that the specimen depicted is not *S. bimaculatus*, but rather a ♀ specimen of *Zamium bimaculatum*.

We have examined 13 male and 9 female specimens of *S. bimaculatus* and compared them with the type specimen. The females approximate the males as described by Adlbauer (2002), with the exception of the shorter antennae length (not exceeding the apex of the elytra) and a larger stature (see Figure 2).

The SANC accession book data indicate that *Schotia brachypetala* Sond. (Weeping boer-bean) and an *Acacia* species (more likely *Vachellia* or *Senegalia*, rather than *Acacia* sensu stricto) are host plants of *S. bimaculatus*. *Schotia brachypetala* occurs in open deciduous bushveld, drier woodland, scrub forest and along river banks (Coates Palgrave, 2002), from the Eastern Cape Province in the south through KwaZulu-Natal, Eswatini, Mozambique, northwards through Mpumalanga and the Limpopo Province into Zimbabwe, and westwards into the North West Province (Schmidt *et al.*, 2007).

Distribution. – Eswatini: Lubombo Region; Zimbabwe: Matabeleland South (Adlbauer, 2002); South Africa: Free State, Mpumalanga and Limpopo provinces. First records from South Africa.

Zamium bimaculatum (Fabricius, 1781)

(Fig. 3 & 4)

- = *Callidium 2-maculatum* Fabricius, 1781:240 (Fähræus, 1872:53; Distant, 1904:105; Aurivillius, 1912:25)
 = *Callidium bimaculatum* Olivier, 1800: 13 (Schönherr, 1817:456; Fähræus, 1872:53; Distant, 1904:105)
 = *Zamium succineum* Pascoe, 1864:289 (Distant, 1904:105; Aurivillius, 1912:25)
 = *Zamium 4-signatum* Fähræus, 1872:49 (Distant, 1904:105; Aurivillius, 1912:25)
 = *Hesperophanes bimaculatus* Fähræus, 1872: 53 (Distant, 1904:105; Aurivillius, 1912:25)
 = *Zamium prociduum* Pascoe, 1864:289 **n. syn.**

Type material examined

Callidium 2-maculatum Fabricius, 1781: SYNTYPE unsexed (BMNH). Labels: [no locality label] || “Call[idium]. Bimaculatum | Fabr[icius]. Sp[ecies]. Ins[ectorum] n [No.] 25” [rectangular curatorial label, cardstock, double black frame] || “[QR code] | NHMUK 014192247”.

Zamium prociduum Pascoe, 1864: SYNTYPE ♂ (BMNH).

SOUTH AFRICA

Western Cape Province. Labels: “Type” [red circle] || “Cape” [yellow lozenge] || “Pascoe | Coll. | 93-60.” || “Zamium | prociduum | type Pasc[oe]” || “Zamium | prociduum. | Cape [of] Gd [Good] Hope Pasc[oe]” || “[QR code] | NHMUK 013315154” (Fig. 3).

Zamium succineum Pascoe, 1864: SYNTYPE unsexed (BMNH).

SOUTH AFRICA

Western Cape Province. Labels: “Type” [red circle] || “Cape” [yellow lozenge] || “Pascoe | Coll. | 93-60.” || “Zamium | succineum | typus Pasc[oe]” || “Zamium | succineum | Cape [of] Gd. [Good] Hope Pasc[oe]” || “[QR code] | NHMUK 014192122”.

Other material examined

SOUTH AFRICA

- 1 ♀, Caffraria, leg. J. Wahlb[erg], *2-Maculatus*. Fabr., (*Zamium bimaculatum*, P. Lepesme det.) NHRS-JLKB 000027432 (NHRS).

Eastern Cape Province

- 1 ♂, Port Alfred, 33°36'S 26°54'E, xii.1984, E Grobbelaar (SANC).

Free State

- 1 ♀, Bethlehem district, 26°15'S 28°20'E, 15.i.1994, MM van der Merwe (SANC).

- 1 ♂ Bothaville [27°22'S 26°37'E], 1937, Dr. Brauns (TMSA).

Gauteng

- 1 ♀, Pretoria, [25°44'S 28°14'E], 1933, F Legg (SANC).

- 2 ♂ & 5 ♀, Pretoria, Roodeplaat, [25°36'S 28°21'E], 07–09.x.1969, HD Naudé (SANC).

- 1 ♂, Pretoria, ARC Roodeplaat, 25°36'S 28°21'E, xii.2008, W Breytenbach (SANC).

KwaZulu-Natal

- 1 ♀, St Lucia Est[uary], 28°17'S 32°25'E, 13.ii.1989, RG Oberprieler (SANC).

- 1 ♂, Pietermaritzburg, [29°36'S 30°23'E], viii.1977, R Muller (SANC).

- 1 ♂, Umlaas, 29°44'S 30°31'E, ix.1997, PE Reavell (SANC).

- 2 ♀, Leeukop Nature Reserve, near Pongola, 27°22'S 31°42'E, 08.i.1992, M Vogt, E Holm (SANC).

- 4 ♂ & 1 ♀, Fanies [Fani's] Island, 28°15'S 32°25'E, 11.i.1992, M Vogt, E Holm (SANC).

- 1 ♀, Ntambanana, [28°36'S 31°44'E], 03.xi.1922, GAH Bedford (SANC).

- 1 ♀, Jozini, [27°25'S 32°03'E], iii.1980, RG Oberprieler (SANC).



Fig 3. *Zamium prociduum* Pascoe, 1864, Syntype, ♂, length 9 mm (BMNH).

- 1 ♂, Gingindlovu, [29°01'S 31°35'E], ii.1980, RG Oberprieler (SANC).

- 1 ♂, Umzimkulu, 30°15'S 29°57'E, 03.x.2014, MD Bate (SANC).

Limpopo Province

- 1 ♀, Ellisras [= Lephalele] district, D'Nyala Nature Reserve, 23°45'S 27°49'E, 18–20.xi.1987, E Grobbelaar (SANC).

- 1 ♂, Thabazimbi, [24°35'S 27°24'E], 09.i.1980, Univ. Pretoria (SANC).

- 1 ♂ & 1 ♀, SA Wildlife College, 10 km N of Orpen Gate, 24°30'S 31°19'E, 14.xi.1999, W Breytenbach (SANC).

- 1 ♂ & 1 ♀, Moorddrift [30°15'S 29°57'E], i.1920, G van Dam (TMSA).

- 1 ♂, Naboomspruit, Nylsvley [Nature Reserve], [24°38'S 28°31'E], CSIR (SANC).

Mpumalanga

- 1 ♀, Presidentsrus, 25°45'S 29°19'E, 05.x.2015, JM Bate, MD Bate (SANC);

- 1 ♂ & 2 ♀, same data, but 28.ix.2017 (SANC);

- 1 ♀, same data, but 12.xi.2017 (SANC);

- 2 ♂ & 1 ♀, same data, but 21.x.2017, emerged from collected White Stinkwood branches (*Celtis africana*) (SANC);

- 2 ♂ & 3 ♀, same data, but 15–20.xii.2019, emerged from collected Common Hookthorn branches (*Senegalia caffra*) (SANC).

- 1 ♂, Lydenburg, [25°05'S 30°27'E], x.1950, SJ Harris (SANC).

- 1 ♀, Witbank, [25°53'S 29°15'E], 13.xi.1960, GA Hepburn (SANC).

- 1 ♂ & 1 ♀, Mahushe Shongwe Nature Reserve, near Mzintzi, 25°45'S 31°44'E, 04–05.ii.1995, SL Chown, R Stals, JD Browne (SANC).

- 1 ♂, KNP [Kruger National Park], Skukuza, [25°00'S 31°36'E], 18–20.xii.1970, TW Drinkwater (SANC).

- 2 ♀, Long Tom Pass, [25°09'S 30°37'E], 21.ii.1978, WZ Schultze (SANC).

North West Province

- 1 ♀, Derby, [26°02'S, 26°03'E], 01.iii.1988, J van den Berg, reared from *Acacia karroo* [= *Vachellia karroo*] (JBC).

- 1 ♂, Potchefstroom, [26°45'S, 27°04'E], 20.xi.1988, J van den Berg, reared from *Acacia karroo* [= *Vachellia karroo*] (JBC).

Northern Cape Province

- 1 ♀, Groenriviermond, 30°50'S 17°35'E, 01.v.1989, E Swanepoel (SANC).

Western Cape Province

- 1 ♂, Paarl, [33°54'S 19°12'E], 11.i.1928, CJ Joubert (TMSA).

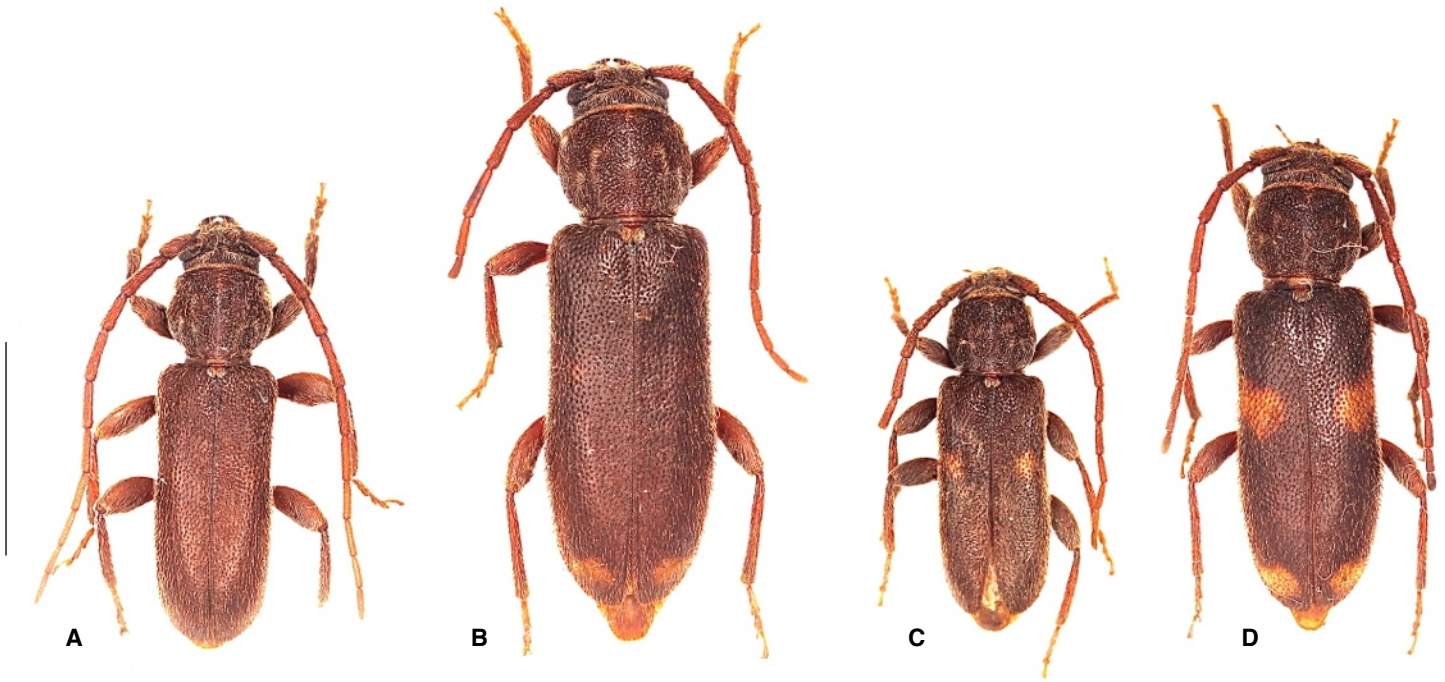


Fig 4. *Zamium bimaculatum*, variation of the elytral markings (Scale bar = 5mm).

A. Without maculae. B. With apical maculae. C. With median maculae. D. With median and apical maculae.

- 1 ♂, Somerset West, 34°05'S 18°51'E, xii.2007, PE Reavell, M Bredenkamp, L Saayman (SANC).

- 3 ♂ & 5 ♀, Cape Town, [33°56'S 18°26'E], 22.v.1981, G Tribe, ex dead almond tree (*Prunus amygdalus*) (SANC).

- 1 ♀, George, 33°58'S 22°27'E, AJ Urban, emerged from dead branch of *Dais cotinifolia* (Thymelaeaceae) (SANC).

- 1 ♂, Mossel Bay, 34°11'S 22°08'E, 26.xii.1997, L Kellerman (SANC).

- 1 ♂, Knysna, [34°02'S 23°03'E], xii.1947, B.R. (SANC).

Remarks. – Martins (1976) proposed, based on morphological characteristics of *Z. incultum* Pascoe, 1864, the transfer of the genus *Zamium* to the Hesperophanini (Cerambycinae). Our study of specimens of *Zamium bimaculatum* revealed that the procoxae are globulose, procoxal cavities are closed laterally, mesocoxal cavities are open to the mesepimeron; first 4 visible urosternites (urosternites III - VI) are unequal in length; and the stridulatory plate of the mesonotum is undivided. We therefore agree with Martins's tribal placement of the genus.

Ferreira (1954:367) stated with regard to *Z. prociduum* Pascoe, 1864 that this species cannot remain in the genus *Zamium* due to “the presence of a very small spine in the inner apical angles of the third to the sixth joints of the antennae, the convexity of the body, the procoxal cavities closed.” We studied the holotype of *Z. prociduum* Pascoe, deposited in BMNH (Fig. 3), and observed no small spines in the inner apical angles of antennomeres III–VI. Furthermore, it is evident from Ferreira's cryptic description of *Z. prociduum* that she did not examine the type specimen.

Based on the *Z. bimaculatum* material studied, it is evident that the beige maculae on the elytra have a high variability in size and shape. The medial maculae on the elytra, which never touch the suture, can form large irregular maculae, or be reduced to small irregular spots or be lacking completely. Likewise, the apical maculae are also variable in size and shape, or lacking. Occasionally, specimens have a homogeneous brown integument (without maculae) on the elytra (Fig. 4). From the studied material, it is evident that absence of medial and/or apical maculae on the elytra is not sex- or regionally specific.

We have examined type specimens of *Z. bimaculatum* (Fabricius, 1781) and *Z. prociduum* Pascoe, 1864. Besides the absence of the apical maculae on the elytra (*Z. prociduum*), they show no morphological differences. Thus, we propose *Z. prociduum* as a new junior subjective synonym of *Z. bimaculatum*.

Host plants. – Sweet thorn (*Vachellia karroo*), common hook-thorn (*Senegalia caffra*), white stinkwood (*Celtis africana*), pompom tree (*Dais cotinifolia*) and almond (*Prunus amygdalus*) are recorded as host plants for *Z. bimaculatum*.

Distribution. – Zimbabwe: Mashonaland; Mozambique; South Africa: Cape Prov., KwaZulu-Natal, Free State, Transvaal (Distant, 1904; Veiga Ferreira, 1964; Adlbauer, 1994), Gauteng, Limpopo, North West, Mpumalanga, Northern Cape provinces.

Tribe **Obrini** Mulsant, 1839

Duffyoemida rudebecki (Tippmann, 1959), **comb. nov.**

(Fig. 5)

= *Obrium rudebecki* Tippmann, 1959:164

= *Duffyoemida barkeri* Martins, 1977:112, **n. syn.**

Type material examined

Obrium rudebecki Tippmann, 1959: HOLOTYPE ♀ (MZLU).

SOUTH AFRICA

Western Cape Province

Labels: “S. Afr. Cape Prov | Tzitzikama [Tsitsikamma] Forest, | Stormsrivierpiek, | 13.I[19]51 | No. 137” || “Swedish South Africa | Expedition | 1950—1951 | Brinck — Rudebeck” || “*Obrium | rudebecki* | ♀ Typus mihi | det.F.Tippmann. Wien” || “Holotypus” [red rectangle] || “1989 | 74” || “MZLU | Type no. | 4247:1” (Fig. 5A).

Duffyoemida barkeri Martins, 1977: HOLOTYPE ♂ (DMSA).

SOUTH AFRICA

KwaZulu-Natal Province

Labels: “K-Kloof [Karkloof] N[atal] | Oct. [19]13 | [Bell-] Marley” || “*Oemida | Barkeri* Dst [Distant]” || “U. Martins det. 1977 | *Duffyoemida* [sic; *Duffyoemida*] | *barkeri* | HOLOTYPE ♂ n.sp.” || “HOLOTIPO” [red label with black frame] || “Durban | Museum” || “DMSA | COL 32839”. PARATYPE ♀ (DMSA) (Fig. 5C).

SOUTH AFRICA

KwaZulu-Natal Province

Labels: “Zululand | St Lucia Bay | x.1920 | B. [Bell-] Marley” || “Durban | Museum” || “DMSA | col.”.

Other material examined

SOUTH AFRICA

KwaZulu-Natal

- Hluhluwe District, Kuleni Farm, 27°24'S 32°22'E, 12-14.ii.1990. E Grobbelaar (SANC);

- Makathini Flats, 27°24'S 32°11'E, xi.1985, PE Reavell (SANC);

- 1 ♂ & 1 ♀, Jozini, [27°25'S 32°03'E], iii.1980, RG Oberprieler (SANC).

Western Cape

- 1 ♂ & 1 ♀, Betty's Bay, 34°22'S 18°53'E, 08.ii.1998, RJ Adair (SANC);

- 4 ♂, Palmiet River, near Kleinmond, 34°20'S 18°58'E, 18.xii.1995, S Nesar. Adult emerged from twig of *Polygala myrtifolia* (Polygalaceae), AcSN 1823 (SANC);

- 1 ♂, Palmiet River, near Kleinmond, 34°20'S 19°00'E, 10.i.1996, S Nesar (SANC).

Data from SANC accession books

AcSN 1823; *Duffyoemida barkeri* Martins. det. K Adlbauer, 1996. Western Cape Province, Lower Palmiet River, near Kleinmond, 18.xii.1995, S. Nesar. Adults: one found on *Polygala myrtifolia* (Polygalaceae); one emerging from twig. Larvae found burrowing in twigs of diameter c. 4-7 mm.

Remarks. – We studied the holotype of *Obrium rudebecki* Tippmann, 1959 (Fig. 5A) and propose that the species cannot remain in *Obrium* due to the presence of a distinct pre-apical cicatrix formed by a prominent transverse ridge on the scape; antennomeres VI–X non-filiform and angulate at the apex (Fig. 5B). In *Obrium*, the antennomeres are without grooves, carinae, or apical expansions (Joly, 2010); and the genus lacks erect/sub-erect setae on the pronotum and/or elytra. These morphological characters, together with the habitus of the pronotum and elytra, indicate the species belongs to the genus *Duffyoemida* Martins, 1977, where we hereby transfer it.

We examined the holotype (♂), paratype (♀) and a series of male and female non-type specimens (SANC, det. K Adlbauer, 1996) of *Duffyoemida barkeri* and compared the female specimens with the holotype (♀) of *Obrium rudebecki*. No morphological differences were found. Therefore, we propose that *Duffyoemida barkeri* Martins, 1977 is a junior synonym of *Duffyoemida rudebecki* (Tippmann, 1959).

Host plant: Specimens and larvae of *D. rudebecki* were found associated with the September Bush, *Polygala myrtifolia* L., an evergreen shrub occurring naturally from the Bokkeveld Mountains in the Western Cape to KwaZulu-Natal. It commonly grows on coastal dunes, rocky slopes, in forests or scrub and open grassland (Manning & Goldblatt, 2012; Van der Walt, 2003).

Distribution. – South Africa: KwaZulu-Natal, Eastern Cape and Western Cape.

Tribe **Callichromatini** Swainson, 1840

Zambizus jeannae Juhel, 2016

Material examined

SOUTH AFRICA

Gauteng

- 1 ♀, Pretoria, [25°35'S 28°22'E], ii.1970, JS Swart. *Curatorial label:* This specimen ex undergraduate student collection. Treat label data with caution. (SANC).

Mpumalanga

- 1 ♀, Kruger National Park, Skukuza, 20 km NE, [24°54'S 31°44'E], 03.xii.1984, CH Scholtz, (SANC);

- 1 ♀, Kruger National Park, Skukuza, [24°59'S 31°36'E], 14.i.1968 E Brinkman (SANC).

Distribution. – Previously known only from the type locality, an uncertain location in southern Zambia (Juhel 2006). The specimens from Mpumalanga are the first South African records of this species.

Subfamily **Lamiinae** Latreille, 1825

Tribe **Theocrini** Lacordaire, 1872

Planodema bimaculata (Aurivillius, 1916)

= *Leptodocus bimaculatus* Aurivillius, 1916: 351 (Breuning 1950:299 ; Téocchi *et al.* 2014:70)

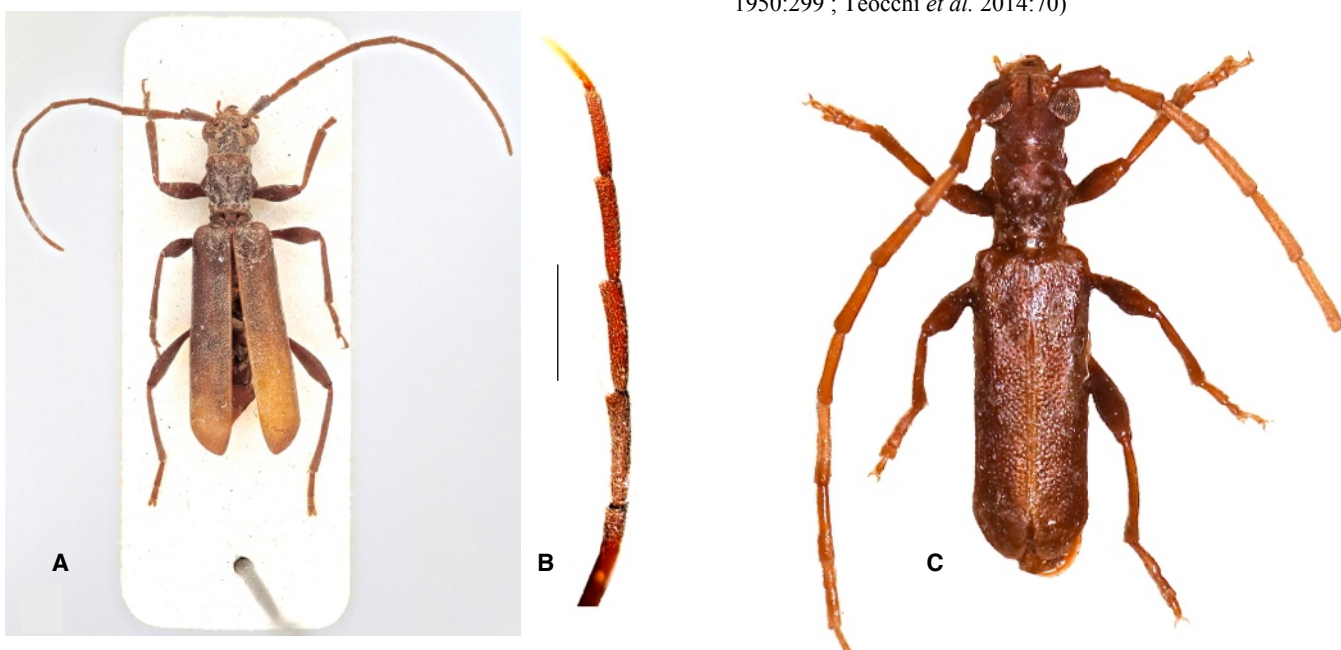


Fig 5. *Duffyoemida rudebecki* (Tippmann, 1959).

A. Dorsal view of the holotype of *Obrium rudebecki* Tippmann, 1959 ♀, length 9.5 mm (MZLU). **B.** Lateral view of Holotype antennae, segments 6-11 (scale bar 1 mm). **C.** Dorsal view of the Holotype of *Duffyoemida rudebecki* Martins, 1977 ♂, length 6,7 mm (DMSA).

= *Pseudorhaphiptera longicollis* Breuning, 1956: 4 (Téocchi *et al.* 2014:71)
 = *Parapeleconus fuscusignatus* Breuning, 1986:50 [in Forchhammer & Breuning, 1986] (Téocchi 1991:27; Téocchi *et al.* 2014:71)
 = *Planodema bimaculata* m. *rhomphae* Téocchi, 1988:19 [unavailable name]

Material examined

SOUTH AFRICA

Mpumalanga

- 1 ♂, Presidentsrus, 25°45'33"S 29°19'04"E, 21.xii.2017, MD & JM Bate (SANC).

Distribution. – Ethiopia, Kenya, Somalia, Sudan, Tanzania, Zimbabwe, Namibia: Kavango (Adlbauer 2018); South Africa: Mpumalanga. First record from South Africa.

Tribe Desmiphorini Thomson, 1860

Stenidea (Amblesthidus) lateralis (Aurivillius, 1908)

= *Amblesthidus lateralis* Aurivillius, 1908:433

= *Xenicoteloides damarensis* Breuning, 1939:159

Material examined

SOUTH AFRICA

Northern Cape

- 1 ♂, Postmasburg, Glosam, 28°05'S 23°02'E, 05.iv.2018. MD Bate (SANC).

Distribution. – Namibia (Adlbauer, 2001); South Africa: Northern Cape Province. First record from South Africa.

Tribe Acanthocinini Blanchard, 1845

Subinermexocentrus allardi Breuning, 1972:147

(Fig. 6).

Type material examined

Subinermexocentrus allardi Breuning, 1972: HOLOTYPE ♀ (RMCA).

ZIMBABWE

Harare Province

Labels: "Coll. Mus. Tervuren | Rhodesia [Zimbabwe]: Salisbury [Harare] | f 27.xi.1965 | don. Dr. V. Allard" || "Subinermexo- | centrus | allardi mih[i] | Breuning det. TYP" || "HOLOTYPUS | S. allardi Bng" [pink rectangle] || "TYPE" [red rectangle] || "Subinermexocentrus | allardi nov." [type-written on paper] || "[QR code] | RMCA ENT | 000015180" (Fig. 6).

Other material examined

SOUTH AFRICA

Northern Cape

- 1 ♂, Postmasburg, Glosam, 28°05'S 23°02'E, 03.iii.2018, MD Bate (SANC).

Remarks. – Illustrated for the first time.

Distribution. – Zimbabwe (Breuning, 1972); South Africa: Northern Cape Province. First record from South Africa.

Acknowledgements

Our sincere thanks to Pierre Juhel and Jérôme Sudre for assistance with some of the identifications, and for providing literature. We also thank Riaan Stals and Elizabeth Grobbelaar of the South African National Collection of Insects, Pretoria, for their continued support and assistance and for providing valuable comments on this paper. Our sincerest thanks to Dr. Francisco E. de L. Nascimento, Universidade de São Paulo, for his valuable comments and suggestions. To Ruth Müller for her



Fig 6. Holotype of *Subinermexocentrus allardi* Breuning, 1972, ♀, length 3,5 mm (RMCA).

assistance and hospitality during our visits to Ditsong National Museum of Natural History. Our thanks and gratitude goes to Max Barclay and Keita Matsumoto (photographer) from the Natural History Museum, London; to Jonathan Brecko and Stéphane Hanot (photographer) of the Musée royal de l'Afrique central, Tervuren, Belgium; to Johannes Bergsten (Senior Curator) of the Swedish Museum of Natural History; and to Christoffer Fägerström (Assistant curator) of the Museum of Zoology Lund University, Lund Sweden, for the preparation and photography and permission to publish photographs of type specimens mentioned in this paper. We thank Natasha Govender (Entomology Technician) of the Durban Natural Science Museum for the loan of the *Duffyoemida barkeri* type specimen. A special word of thanks to our friend Stanislav Snäll, who went out of his way to trace the *Zamium* species present in the Swedish Museums. We would also like to thank Larry G. Bezark who's corrections helped to improve the manuscript.

References

- Adlbauer K., 1994. – Bockkäfer aus Zimbabwe und Transvaal Teil I - Prioninae und Spondylinae (Coleoptera, Cerambycidae). *Lambillionea*, 94(3): 293-303.
- Adlbauer K., 2001. – *Katalog und Fotoatlas der Bockkäfer Namibias (Cerambycidae)*. Taita Publishers, Hradec Kralove, 80 pp.
- Adlbauer K., 2002. – Neue Cerambyciden aus Ost- und Südafrika. *Les Cahiers Magellanes*, 18: 1-13.
- Adlbauer K., 2007. – Neue Bockkäfer aus der Arabischen Halbinsel und Afrika (Coleoptera, Disteniidae und Cerambycidae). *Les Cahiers Magellanes*, 69: 1-21.
- Adlbauer K., 2018. – Zweiter Nachtrag zum Katalog und Fotoatlas der Bockkäfer Namibias (Coleoptera, Cerambycidae). *Les Cahiers Magellanes*, 30: 44-55.

- Aurivillius C., 1907. – Neue oder wenig bekannte Coleoptera Longicornia. 9. *Arkiv för Zoologi Uppsala*, 3(18): 93-131.
- Aurivillius C., 1908. – Cerambyciden. In Schultze L. Zoologische und anthropologische Ergebnisse einer Forschungsreise in Südafrika I. (2), *Denkschriften der Medizinisch-naturwissenschaftlichen Gesellschaft zu Jena* 13(1): 429-434.
- Aurivillius C., 1912. – *Coleopterorum Catalogus* pars 39 (22). W. Junk & S. Schenkling, Berlin. 574 pp.
- Aurivillius C., 1916. – Neue oder wenig bekannte Coleoptera Longicornia. 16. *Arkiv för Zoologi*, Uppsala 10(19): 335-360.
- Bjørnstad A., 2017. – Description of new longhorns from South Africa (Coleoptera, Cerambycidae). *Les Cahiers Magellanes*, 27: 66-81.
- Bjørnstad A., Grobbelaar E. & Perissinotto R., 2016. – Review of *Afraustraloderes rassei* Bouyer, 2012: description of its female and a new species of *Pixodarus* Fairmaire, 1887 (Coleoptera, Cerambycidae, Prioninae). *ZooKeys*, 558: 77-93. <https://dx.doi.org/10.3897/zookeys.558.6112>
- Bouchard P. & Bousquet Y., 2020. – Additions and corrections to “Family-group names in Coleoptera (Insecta)”. *ZooKeys*, 922: 65-139. <https://doi.org/10.3897/zookeys.922.46367>
- Bouchard P., Bousquet Y., Davies A.E., Alonso-Zarazaga M.A., Lawrence J.F., Lyal C.H.C., Newton A.F., Reid C.A.M., Schmitt M., Ślipiński S.A. & Smith A.B.T., 2011. – Family-group names in Coleoptera (Insecta). *ZooKeys*, 88: 1-972. <https://doi.org/10.3897/zookeys.88.807>
- Breuning S., 1938. – Novae species Cerambycidae VI. *Festschrift zum 60. Geburtstag von Professor Dr. Embrik Strand*, Riga 4: 180-392.
- Breuning S., 1950. – Révision des “Theocridini” *Longicornia* I: 279-303, 6 figs. Paul Lechevalier, Paris.
- Breuning S., 1972. – Descriptions de nouveaux Lamiinae du Musée Royal de l’Afrique Centrale (Coleoptera Cerambycidae). *Revue de Zoologie et de Botanique Africaines*, 86(1-2): 146-147.
- Coates-Palgrave M., 2002. – *Keith Coates-Palgrave Trees of Southern Africa*, edn 3, imp. 4., Random House Struik (Pty) Ltd, Cape Town, 1212 pp.
- Delatour T., Sudre J., Juhel P. & Delahaye N., 2020. – A field survey in the Western Cape Province of South Africa. Part 1: Coleoptera, Cerambycidae. *Entomologia Africana* 25(2): 8-22.
- Distant W.L., 1898. – Coleoptera collected in the Transvaal. *The Annals and Magazine of Natural History*, London (7) 1: 366-378.
- Distant W.L., 1904-1906. – *Insecta Transvaaliensia. A contribution to a knowledge of the entomology of South Africa. Order Coleoptera. Fam. Cerambycidae. (Longicornia).* W.L. Distant, Hatton Garden, London 1(5-6): 98-252.
- Fabricius J.C., 1781. – *Species insectorum exhibentes eorum differentias specificas, synonymia auctorum, loca natalia, metamorphosin adiectis observationibus, descriptionibus.* Hamburgi et Kilonii: Carol Ernest Bohnii 1: 1-552.
- Fåhraeus O.I., 1872. – Coleoptera Caffrariae, annis 1838–1845 a J. A. Wahlberg collecta. *Longicornia* descripsit. *Öfversigt af Kongliga Svenska Vetenskaps-Akademiens Förhandlingar*, Stockholm 29(1): 45-69.
- Fairmaire M.L., 1896. – Matériaux pour la faune Coleopterique de la région Malgache. *Annales de la Société Entomologique de Belgique*, 8: 336-398. <https://doi.org/10.5962/bhl.part.2025>
- Ferreira M.C., 1954. – Contribution to the study of the Cerambycinae of South Africa. II. Asemimi. *Annals of the Transvaal Museum*, 22(3): 367-373.
- Forchhammer P. & Breuning S., 1986. – Annotated list of Cerambycidae, subfamily Lamiinae collected in Tanzania, Zambia and Botswana 1969-80 with description of 86 new taxa. Contributions to the knowledge of Ethiopian Cerambycidae (Coleoptera) II. *Natura Jutlandica* 22(1): 1-72.
- Joly L.J., 2010. – El género *Obrium* Dejean, 1821 (Coleoptera, Cerambycidae, Obriini) en Venezuela. *Papéis Avulsos de Zoologia, São Paulo*, 50(46): 701-707. <https://doi.org/10.1590/S0031-10492010004600001>
- Juhel P., 2016. – Vingt et unième contribution à l’étude des Callichromatini africains: description d’un genre nouveau et de six espèces nouvelles (Coleoptera, Cerambycidae, Cerambycinae, Callichromatini). *Les Cahiers Magellanes*, 24: 25-37.
- Klein H., 2011. – A catalogue of the insects, mites and pathogens that have been used or rejected, or are under consideration, for the biological control of invasive alien plants in South Africa. *African Entomology*, 19(2): 515-549. <https://doi.org/10.4001/003.019.0214>
- Lepesme P., 1948. – Cerambyciaires nouveaux ou peu connus de l’Afrique tropicale. *Revue de Zoologie et de Botanique Africaines*, 40(4): 251-265.
- Manning J. & Goldblatt P., 2012. – *Plants of the Greater Cape Floristic Region 1: the Core Cape flora.* *Strelitzia* 29. South African National Biodiversity Institute, Pretoria. 683 pp.
- Maquart P.-O., Richard D. & Vitali F., 2018. – Description of two new Obriini Mulsant, 1839 (Coleoptera: Cerambycidae) from the Tankwa Karoo biome in South Africa and Namibia. *Zootaxa*, 4521(2): 183-190. <https://doi.org/10.11646/zootaxa.4521.2.2>
- Martins U.R., 1976. – Notes on *Zamium* Pascoe and *Holorusius* Fairmaire, two African cerambycid genera (Coleoptera, Cerambycidae). *Papéis Avulsos de Zoologia, São Paulo*, 30(9): 123-132.
- Martins U.R., 1977. – Transference of the genera *Oemida* Gahan, *Comusia* Thomson and *Hypomares* Thomson from the Methiini to Obriini (Col. Cerambycidae). *Papeis Avulsos de Zoologia., S. Paulo*. 31(6): 103-118.
- Mulsant E., 1862. – Histoire Naturelle des Coléoptères de France. Longicornes. *Annales de la Société Impériale d’Agriculture, d’Histoire Naturelle et des Arts Utiles de Lyon*. 1-480. <https://doi.org/10.5962/bhl.title.51571>
- Olivier G.A., 1800. – Entomologie ou Histoire Naturelle des Insectes, avec leurs caractères génériques et spécifiques, leur description, leur synonymie et leur figure enluminée Coléoptères. *Imprimerie de Lanneau*, Paris 4: 1-492, 75 pls.
- Pascoe F.P., 1864. – Additions to the Longicornia of South Africa, including a few Species from Old Calabar and Madagascar. *The Journal of Entomology*, London 2(11): 270-291, pl. XIII.
- Sama G., 1987. – Note préliminaire pour une faune des longicornes de l’Afrique du Nord. *Biocosme Méditerranéen*, Nice 4(1): 43-64.
- Schmidt E., Lötter M. & McClelland W., 2007. – *Trees and Shrubs of Mpumalanga and the Kruger National Park*, edn 2. Jacana Media, Johannesburg. 702 pp.
- Schönherr C.J., 1817. – *Synonymia insectorum, oder : Versuch einer Synonymie Aller bisher bekannten Insecten ; nach Fabricii Systema Eleutheratorum & : c. Geordnet.* Skara, Lewerentzischen Buchdrükerey 1(3): 1-506.

- Stals R., 2011. – Beetles (Class Insecta, Order Coleoptera). In: Picker, M. & Griffiths, C. (Eds). *Alien & Invasive Animals – A South African Perspective*. Random House Struik, Cape Town, South Africa. pp. 108-117.
- Sudre J., Grobbelaar E. & Minetti, R., 2016. – Description d'un nouveau genre et d'une nouvelle espèce d'Afrique du Sud appartenant à la tribu des Parmenini (Coleoptera Cerambycidae Lamiinae). *Les Cahiers Magellanes*, NS, 24: 20-24.
- Sudre J. & Delatour T., 2019. – *Stenideogmodera* and *Mimacartus* as new genera from Western Cape Province (South Africa) belonging to the tribe Desmiphorini Thomson, 1860 (Coleoptera, Cerambycidae, Lamiinae). *Entomologia Africana*, 24(2): 14-26.
- Sudre J., Jiroux E., Bate R. & François M., 2019. – Revalidation et mise au point à propos de deux *Prosopocera* appartenant aux sous-genres *Tecton* Chevrolat, 1855 et *Musala* Téocchi, 2000, synonymies concernant quelques lamiaires africains (Coleoptera, Cerambycidae, Lamiinae). *Les Cahiers Magellanes*, NS, 34: 26-40.
- Téocchi P., 1991. – Synonymes, corrections et observations relatives à la dernière note de St. von Breuning (Coleoptera Cerambycidae Lamiinae) (2e partie). *Bulletin de la Société Sciences Nat*, Venette 70: 26-28.
- Téocchi P., Sudre J. & Jiroux E., 2014. – Synonymies, diagnoses et bionomie de quelques Lamiaires africains (20e note) (Coleoptera, Cerambycidae, Lamiinae). *Les Cahiers Magellanes*, NS, 15: 51-95.
- Trócoli S., 2018. – Actualización del catálogo de Longicornios de Marruecos Actualisation du catalogue des Longicornes du Maroc (Parte I / Partie I : Prioninae, Aseminae, Saphaninae). *Revue de l'Association Roussillonaise d'Entomologie* 27(3): 130-140.
- Tippmann F.F., 1959. – Results of the Lund University Expedition in 1950-1951. Coleoptera: Cerambycidae. In Bertil Hanström, Per Brinck & Gustaf Rudebeck. *South African Animal Life* 6: 152-193.
- Van der Walt L., 2003. – PlantZAfrica [online]. South African National Biodiversity Institute. Kirstenbosch National Botanical Garden. <http://pza.sanbi.org/polygala-myrtifolia>. [Accessed 9 April 2020].
- Veiga Ferreira G., 1964. – Longicornios de Moçambique, I. *Revista de Entomología de Moçambique*, 7(2): 453-838.
- Verdugo Páez A. & Coello P., 2003. – Contribución al conocimiento de los Cerambycidos de Andalucía. III. *Phymatodellus rufipes* (Fabricius, 1777): nueva especie andaluza y datos interesantes para otras seis (Coleoptera, Cerambycidae). *Boletín de la Sociedad Entomológica Aragonesa* 32: 105-107.

Authors contribution ¹

Publisher correspondence. – RB

Writing the article. – RB

Description. – RB & MB

Article proofreading. – RB & MB

Bibliographic work. – RB

Material study. – RB & MB

Author of the figures. – MB (Fig. 2, 4 & 5C)

¹ RB = Riana Bate - MB = Michael D. Bate

Résumé

Bate R. & Bate M. D., 2023. – Synonymies et données nouvelles de quelques longicornes d'Afrique du Sud (Coleoptera, Cerambycidae). *Faunitaxys*, 11(37): 1 – 9.

Zamium bicolor Distant, 1898 (actuellement *Alocerus bicolor*) est transféré dans le genre *Pectoctenus* et considéré comme le nouveau synonyme subjectif senior de *Pectoctenus bryanti* Lepesme, 1948. *Obrium rudebecki* Tippmann, 1959 est transféré dans le genre *Duffyoemida* et considéré comme le nouveau synonyme subjectif senior de *Duffyoemida barkeri* Martins, 1977. Le nouveau synonyme subjectif supplémentaire suivant est proposé : *Zamium procidium* Pascoe, 1864, est un synonyme plus récent de *Zamium bimaculatum* (Fabricius, 1781). *Stenobrium punctatum* Adlbauer, 2007, *Zambizus jeannae* Juhel, 2016, *Swaziphanes bimaculatus* Adlbauer, 2002, *Planodema bimaculata* (Aurivillius, 1916), *Stenidea (Amblesthidus) lateralis* (Aurivillius, 1908) et *Subinermexocentrus allardi* Breuning, 1972, sont signalés en Afrique du Sud pour la première fois. Des plantes hôtes de *Duffyoemida rudebecki* (Tippmann, 1959), *Swaziphanes bimaculatus* et *Zamium bimaculatum* sont signalées pour la première fois.

Mots-clés. – Coleoptera, Cerambycidae, *Duffyoemida*, *Pectoctenus*, *Swaziphanes*, *Zamium*, taxonomie, nouveaux synonymes, distribution, plantes hôtes.

Derniers articles publiés

- Platia G. & Pulvirenti E., 2023. – New species and new records of click beetles of the genera *Girardelater* Schimmel, 1999, *Procrater* Reitter, 1905 and *Xanthopenthes* Fleutiaux, 1928 from the Oriental Region (Coleoptera, Elateridae, Elaterini and Megapenthini). *Faunitaxys*, 11(31): 1 – 18. [https://doi.org/10.57800/faunitaxys-11\(31\)](https://doi.org/10.57800/faunitaxys-11(31))
- Háva J. & Coache A., 2023. – A contribution to knowledge of Mycetophagidae (Coleoptera) from Sao Tome and Principe. *Faunitaxys*, 11(32): 1 – 5. [https://doi.org/10.57800/faunitaxys-11\(32\)](https://doi.org/10.57800/faunitaxys-11(32))
- Devesa S. & Santos-Silva A., 2023. – On *Elaphidion tuberculicolle* Fisher, 1932 and *Elaphidion scaramuzzai* Fisher, 1951 (Coleoptera, Cerambycidae). *Faunitaxys*, 11(33): 1 – 7. [https://doi.org/10.57800/faunitaxys-11\(33\)](https://doi.org/10.57800/faunitaxys-11(33))
- Delahaye N., Marazzi G. & Marazzi V., 2023. – Quelques remarques sur le genre *Xixuthrus* Thomson, 1864 avec la description de deux nouvelles espèces (Coleoptera, Cerambycidae, Prioninae, Macrotomini, Xixuthrina). *Faunitaxys*, 11(34): 1 – 9. [https://doi.org/10.57800/faunitaxys-11\(34\)](https://doi.org/10.57800/faunitaxys-11(34))
- Lourenço W. R. & Velten J., 2023. – Confirmation of the validity of the genus *Cretaceousbuthus* Lourenço, 2022 and description of a new species from Burmite (Scorpiones: Buthoidea: Buthidae). *Faunitaxys*, 11(35): 1 – 6. [https://doi.org/10.57800/faunitaxys-11\(35\)](https://doi.org/10.57800/faunitaxys-11(35))
- Théry T., 2023. – Description of *Derolathrus foveiceps* n. sp. from Florida (Coleoptera: Jacobsoniidae). *Faunitaxys*, 11(36): 1 – 4. [https://doi.org/10.57800/faunitaxys-11\(36\)](https://doi.org/10.57800/faunitaxys-11(36))

Faunitaxys

Volume 11, Numéro 37, Juin 2023

SOMMAIRE

Synonymies et données nouvelles de quelques longicornes d’Afrique du Sud (Coleoptera, Cerambycidae).

Riana Bate & Michael D. Bate 1 – 9

CONTENTS

New synonymies and distribution records of some longhorn beetles (Coleoptera, Cerambycidae) occurring in South Africa.

Riana Bate & Michael D. Bate 1 – 9



Illustration de la couverture :

La division Biosystematics, Agricultural Research Council–Plant Health & Protection, Pretoria, est la dépositaire des South African National Collections of Insects (SANC).

Crédits :

Keita Matsumoto (Natural History Museum, London) : Fig. 1 & 3.

Michael D. Bate : Fig. 2, 4 & 5C.

Christoffer Fågerström (Museum of Zoology Lund University, Lund Sweden) : Fig. 5 A & B.

Stéphane Hanot (Musée royal de l’Afrique central, Tervuren, Belgium) : Fig. 6.

Elsa van Niekerk (Agricultural Research Council–Plant Health & Protection) : Couverture.