



HAL
open science

Transcriptomic evidence for tumor-specific beneficial or adverse effects of TGF β pathway inhibition on the prognosis of patients with liver cancer

Matthis Desoteux, Betty Maillot, Kevin Bévant, Tanguy Ferlier, Raffaele Leroux, Gaëlle Angenard, Corentin Louis, Laurent Sulpice, Karim Boudjema, Cédric Coulouarn

► To cite this version:

Matthis Desoteux, Betty Maillot, Kevin Bévant, Tanguy Ferlier, Raffaele Leroux, et al.. Transcriptomic evidence for tumor-specific beneficial or adverse effects of TGF β pathway inhibition on the prognosis of patients with liver cancer. *FEBS Open Bio*, 2023, 13 (7), pp.1278-1290. 10.1002/2211-5463.13647 . hal-04117428

HAL Id: hal-04117428

<https://hal.science/hal-04117428v1>

Submitted on 26 Jul 2023


HAL is a multi-disciplinary open access archive for the deposit and dissemination of scientific research documents, whether they are published or not. The documents may come from teaching and research institutions in France or abroad, or from public or private research centers.

L'archive ouverte pluridisciplinaire **HAL**, est destinée au dépôt et à la diffusion de documents scientifiques de niveau recherche, publiés ou non, émanant des établissements d'enseignement et de recherche français ou étrangers, des laboratoires publics ou privés.



Distributed under a Creative Commons Attribution 4.0 International License

Transcriptomic evidence for tumor-specific beneficial or adverse effects of TGF β pathway inhibition on the prognosis of patients with liver cancer

Matthis Desoteux¹, Betty Maillot², Kevin Bévant¹, Tanguy Ferlier¹, Raffaële Leroux¹, Gaëlle Angenard³, Corentin Louis¹, Laurent Sulpice^{1,2,4}, Karim Boudjema^{2,4} and Cédric Couluarn¹ 

¹ Inserm, UMR_S 1242, OSS (Oncogenesis Stress Signaling), Centre de Lutte contre le Cancer Eugène Marquis, Univ Rennes, France

² Department of Hepatobiliary and Digestive Surgery, Rennes University Hospital, France

³ Inserm, Inrae, UMR_S 1317, NuMeCan (Nutrition, Metabolisms and Cancer), Univ Rennes, France

⁴ Clinical Investigation Center 1414, CHU de Rennes, France

Keywords

galunisertib; gene signature; hepatocellular carcinoma; survival; TGF β

Correspondence

C. Couluarn, Inserm U1242 "Oncogenesis, Stress, Signaling" (OSS), CLCC Eugène Marquis, Rue de la Bataille Flandres Dunkerque, Bat D, 1er étage, 35042 Rennes, France
Tel: +33 2 2323 3881
E-mail: cedric.couluarn@inserm.fr

(Received 2 March 2023, revised 3 May 2023, accepted 16 May 2023)

doi:10.1002/2211-5463.13647

Therapeutic targeting of the transforming growth factor beta (TGF β) pathway in cancer represents a clinical challenge since TGF β exhibits either tumor suppressive or tumor promoting properties, depending on the tumor stage. Thus, treatment with galunisertib, a small molecule inhibitor of TGF β receptor type 1, demonstrated clinical benefits only in subsets of patients. Due to the functional duality of TGF β in cancer, one can hypothesize that inhibiting this pathway could result in beneficial or adverse effects depending on tumor subtypes. Here, we report distinct gene expression signatures in response to galunisertib in PLC/PRF/5 and SNU-449, two cell lines that recapitulate human hepatocellular carcinoma (HCC) with good and poor prognosis, respectively. More importantly, integrative transcriptomics using independent cohorts of patients with HCC demonstrates that galunisertib-induced transcriptional reprogramming in SNU-449 is associated with human HCC with a better clinical outcome (i.e., increased overall survival), while galunisertib-induced transcriptional reprogramming in PLC/PRF/5 is associated with human HCC with a worse clinical outcome (i.e., reduced overall survival), demonstrating that galunisertib could indeed be beneficial or detrimental depending on HCC subtypes. Collectively, our study highlights the importance of patient selection to demonstrate a clinical benefit of TGF β pathway inhibition and identifies Serpin Family F Member 2 (SERPINF2) as a putative companion biomarker for galunisertib in HCC.

Hepatocellular carcinoma (HCC) is a deadly cancer worldwide due to limited therapeutic options [1]. Surgery remains the best strategy for curative intent when performed at an early stage [2]. However, most HCC are diagnosed at an advanced stage and patients are then evaluated for systemic treatments [2,3]. Although

phase III clinical trials reported positive results for antiangiogenic drugs, alone or combined with immune checkpoint inhibitors (ICI) [2,4], extending the therapeutic options to reduce vascular invasion and metastatic progression still represents an important need. Targeting the transforming growth factor beta (TGF β)

Abbreviations

AFP, alpha-fetoprotein; ATCC, American Type Culture Collection; BCLC, Barcelona Clinic Liver Cancer; CDH1, E-cadherin; EMT, epithelial-to-mesenchymal transition; GSEA, gene set enrichment analysis; HCC, hepatocellular carcinoma; ICI, immune checkpoint inhibitors; MSigDB, molecular signatures database; qRT-PCR, quantitative real-time polymerase chain reaction; SERPINF2, serpin family F member 2; TCGA, The Cancer Genome Atlas; TGF β , transforming growth factor beta; TNM, tumor node metastasis; VIM, vimentin.

pathway has been proposed as a promising strategy in HCC [5]. Indeed, as a potent inducer of epithelial-to-mesenchymal transition (EMT), TGF β contributes to metastasis [6]. TGF β is also a potent immunosuppressive cytokine, which has been associated with cold tumors and resistance to ICI [7]. Thus, several molecules have been developed to inhibit the TGF β pathway, including galunisertib (LY2157299), a selective ATP-mimetic inhibitor of type 1 TGF β receptor [5]. In preclinical models, galunisertib enhanced sorafenib-induced apoptosis and reduced stemness-related functions of invasive HCC cells [8–10]. Phase 1 studies demonstrated a favorable toxicity and pharmacokinetic profiles [11,12]. However, phase 2 studies demonstrated a clinical benefit only in subsets of patients, a feature that could be explained by the functional duality of TGF β [12,13]. Actually, if contributing to tumor progression and resistance to therapies, TGF β can also exert cytostatic actions limiting tumor growth in some HCC cases, for which its inhibition could be at best ineffective but at worst detrimental by promoting tumor progression. In this study, by using clinically relevant human HCC cell lines and integrative transcriptomics, we provide evidence that a galunisertib-induced transcriptional reprogramming is associated with beneficial or adverse effects depending on tumor subtypes. The study demonstrates that TGF β pathway inhibition should be restricted to HCC subtypes with a mesenchymal phenotype in which the tumor suppressive arm of TGF β is lost. The study also identifies Serpin Family F Member 2 (SERPINF2) as a putative companion biomarker for galunisertib to identify the patients who may benefit from galunisertib treatment.

Materials and methods

Cell culture

PLC/PRF/5 (CRL-8024) and SNU-449 (CRL-2234) HCC cell lines were purchased from the American Type Culture Collection (ATCC, Manassas, VA, USA, www.lgcstandards-atcc.org) and cultured as previously described [14,15]. ATCC performed cell line authentication by Short Tandem Repeat DNA profiling. No alteration (i.e., mutation, fusion, or translocation) in *SMAD2-4* and *CTNNB1* genes was observed in PLC/PRF/5 and SNU-449 cell lines (<https://depmap.org/portal/>). Cells were treated for 16 h with 10 μ M galunisertib, also known as LY2157299 (Sigma-Aldrich, St. Louis, MO, USA), alone or in combination with 1 ng·mL⁻¹ recombinant human TGF β 1 (R&D Systems, Minneapolis, MN, USA) after overnight serum starvation [15]. All cell cultures were conducted at 37 °C in a 5% CO₂ atmosphere. Independent culture experiments were

carried out in triplicate. RNA was extracted after 16 h of treatment and submitted to gene expression profiling.

Gene expression profiling

Total RNA was purified from cells at 80% confluency with an RNeasy kit (Qiagen, Courtaboeuf, France). Genome-wide expression profiling was conducted using low-input Quick Amp labeling kits and human SurePrint G3 pangenomic (60K probes) microarrays (Agilent Technologies, Les Ulis, France), as previously described [14]. Gene expression data were processed using FEATURE EXTRACTION and GENESPRING softwares (Agilent Technologies) and further analyzed using R-based BRB-ArrayTools, as described [16]. Clustering analysis was made using CLUSTER 3.0 and TREEVIEW 1.6 using uncentered correlation and average linkage options. Gene expression datasets generated in this study are openly available in Gene Expression Omnibus (accession number GSE211806).

Data mining and integrative transcriptomics

Gene annotation was based on Gene Ontology and enrichment for specific biologic functions or canonical pathways was evaluated using FUNCASSOCIATE 2.0 program [17]. Gene set enrichment analysis (GSEA) was conducted by using the Java tool developed at the Broad Institute (Cambridge, MA, USA), as previously described [18]. Unsupervised GSEA was done with the whole C2 collection of curated gene sets from the molecular signatures database (MSigDB). Integration of transcriptomic data was conducted using publicly available HCC datasets (GSE1898, GSE4024, and GSE14520), as previously described [15,16,19]. In total, two independent cohorts of HCC were analyzed. The first cohort (GSE1898 and GSE4024) included 139 HCC [16,20–22] and the second cohort (GSE14520) included 225 HCC [23]. Survival analysis was also performed using The Cancer Genome Atlas (TCGA) datasets (<https://portal.gdc.cancer.gov/projects/TCGA-LIHC>).

Quantitative real-time PCR

Expression of relevant genes was measured by quantitative real-time PCR (qRT-PCR) using SYBR Green (Applied Biosystems, Carlsbad, CA, USA), as previously described [15]. Quantitative analysis of PCR data was conducted with the 2^{- $\Delta\Delta$ Ct} method. Melting curves analysis was used to validate the specificity of PCR products.

Statistical analysis

Gene expression profiling was made using RNA extracted from three independent culture experiments. Single gene expression data are presented as the mean \pm standard

deviation. Statistical analyses were performed using R-3.5.1 and GRAPHPAD PRISM 7.0, BOSTON, MA, USA. For microarray data, differentially expressed genes were identified by a two-sample univariate *t*-test and a random variance model [24]. For group comparison of quantitative variables, *t*-testing was applied. Categorical data were analyzed by chi-squared testing. The cumulative survival rate was estimated by the Kaplan–Meier method, and the survival curves were compared with the log-rank test. *P*-values below 0.05 were considered as significant statistical differences.

Results and Discussion

PLC/PRF/5 and SNU-449 reproduce human HCC with different prognosis

Hepatocellular carcinoma cell lines constitute relevant models to investigate signaling pathways altered in liver cancer and to test new drug candidates [14,25–28]. However, to what extent these cell lines recapitulate the biology of human HCC tumors has been partly addressed [29]. Here, we evaluated the clinical relevance of PLC/PRF/5 and SNU-449 cell lines, which were representative of two clusters differing notably in the expression of genes associated with metastasis in a panel of 19 HCC cell lines [16]. In addition, from this panel, we previously demonstrated by integrative transcriptomics that PLC/PRF/5 and SNU-449 cell lines recapitulated human HCC with tumor-suppressive and tumor-promoting features of the TGF β pathway, respectively [16]. Accordingly, PLC/PRF/5 and SNU-449 differed in the expression of epithelial and mesenchymal markers, SNU-449 exhibiting a mesenchymal-like phenotype and a higher secretion of TGF β (Fig. S1), in agreement with previously published data [15,30]. It was also shown that a mesenchymal-like phenotype in HCC cell lines correlated with autocrine stimulation of the TGF β pathway and resistance to TGF β -induced suppressor effects [30]. Not surprisingly, numerous genes were differentially expressed between PLC/PRF/5 and SNU-449 cells (Fig. 1A; Table S1). A significant enrichment of signatures associated with a previously described molecular classification of human HCC [31] was highlighted. Thus, the HOSHIDA_LIVER_CANCER SUBCLASS_S1 and SUBCLASS_S3 signatures were enriched in the gene expression profiles of SNU-449 and PLC/PRF/5 cells, respectively (Fig. 1B). The S1 subtype reflected an aberrant activation of the WNT pathway through TGF β , while the S3 subtype was associated with a preserved hepatocyte differentiation [31]. Supporting this observation, the HALLMARK_EMT [32] and the HSIAO_LIVER_SPECIFIC_GENES [33] signatures were enriched in the gene expression profiles of

SNU-449 and PLC/PRF/5 cells, respectively (Fig. 1B). In agreement with a more differentiated phenotype, key genes associated with liver metabolism (e.g., *APOB*) were more expressed in PLC/PRF/5 than in SNU-449 cell line. Conversely, genes associated with cancer stem cells (e.g., *CD44*), TGF β pathway (e.g., *SERPINE1*), and EMT (e.g., *SNAI2*) were expressed at a higher level in SNU-449 than in PLC/PRF/5 cell line (Fig. 1C), recapitulating previous reports made at transcriptomic and proteomic levels [27,29]. Supporting a higher proliferative potential of SNU-449 cells, cyclin-dependent kinase inhibitor 2A (*CDKN2A*) and *BIRC3*, encoding an inhibitor of apoptosis, were underexpressed while *MYC* was overexpressed (Fig. 1C). Next, we integrated the signature made of genes differentially expressed between SNU-449 and PLC/PRF/5 cell lines with the gene expression profiles of 139 HCC cases with clinical annotations [16,21,22]. Clustering analysis of the integrated datasets identified two groups of human HCC associated with either SNU-449 (cluster 1) or PLC/PRF/5 (cluster 2) cell line (Fig. 1D). Interestingly, patients with HCC that recapitulate the gene expression signature of the PLC/PRF/5 cell line (cluster 2) had a better survival (Fig. 1E). Altogether, gene expression profiling at basal level and integrative transcriptomics demonstrated that PLC/PRF/5 and SNU-449 cell lines are relevant models to study human HCC with different prognosis.

Specific galunisertib signatures in PLC/PRF/5 and SNU-449 cells

Transforming growth factor beta plays a key role in liver carcinogenesis but targeting this pathway is challenging due to its functional duality [34]. Supporting this hypothesis, we previously reported signatures associated with the tumor-suppressive and tumor-promoting properties of TGF β in human HCC with good and bad prognosis, respectively [16]. As we previously reported that PLC/PRF/5 and SNU-449 cell lines were associated with this functional duality [16], we hypothesized that they may constitute relevant models to infer the impact of inhibiting the TGF β pathway in specific human HCC. Further supporting this hypothesis, the data above demonstrated that the SNU-449 cell line is also associated with human HCC from the S1 subtype in which the tumor promoting arm of TGF β is activated (Fig. 1B). Thus, we established gene expression signatures of TGF β pathway inhibition by treating PLC/PRF/5 and SNU-449 cell lines with galunisertib [35]. Galunisertib treatment resulted in the modulation of 386 nonredundant and well-annotated genes in SNU-449 cell line (139 upregulated and 247 downregulated versus control) and 124

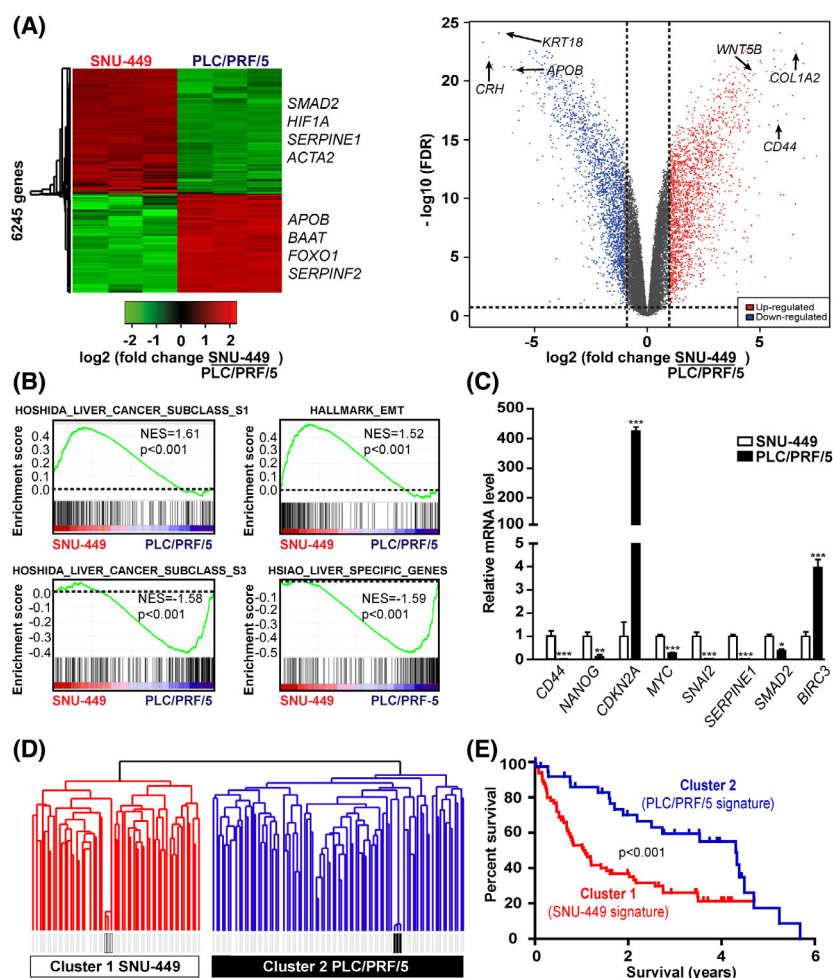


Fig. 1. PLC/PRF/5 and SNU-449 cells mimic two groups of human HCC with a variable prognosis. (A) Hierarchical clustering and volcano plot of genes differentially expressed between PLC/PRF/5 and SNU-449 (dashed lines: fold-change $FC > 2$; $P < 0.001$; $n = 3$ independent experiments). The complete list of genes is provided in Table S1. (B) GSEA using the gene expression profiles of SNU-449 and PLC/PRF/5 cells and signatures associated with liver cancer (NES, normalized enrichment score provided by GSEA). (C) Expression of key genes representative of TGF β -related functions. Data are presented as bar plots with mean \pm SD and were compared using the Student's t -test, * $P < 0.05$, ** $P < 0.01$, and *** $P < 0.001$ ($n = 3$ independent experiments). (D) Dendrogram overview of PLC/PRF/5 and SNU-449 gene expression profiles integrated with those of 139 human HCC cases (GSE1898 and GSE4024). Clustering analysis identified two major HCC clusters associated with SNU-449 (cluster 1) and PLC/PRF/5 (cluster 2) profiles. (E) Kaplan–Meier plot and log-rank statistics of HCC included in clusters 1 and 2.

genes in PLC/PRF/5 cell line (26 upregulated and 78 downregulated versus control) (Fig. 2A; Tables S2 and S3). Only five genes were commonly deregulated in the two cell lines, demonstrating that galunisertib induces cell-specific changes, similar to TGF β [36]. Importantly, GSEA suggested that galunisertib could switch the gene expression profile of SNU-449 cell line toward a more favorable prognosis. Indeed, a positive enrichment of gene signatures associated with a better HCC differentiation (e.g., HOSHIDA_LIVER_CANCER_SUBCLASS_S3 and HSIAO_LIVER_SPECIFIC_GENES), as described above (Fig. 1B), was observed in the gene expression profile of SNU-449

cells treated with galunisertib, as compared to untreated control cells (Fig. 2B). Conversely, a negative enrichment of the HALLMARK_EMT signature was observed, suggesting that galunisertib may switch the EMT signature toward a MET signature (Fig. 2B). Accordingly, an increased expression of the epithelial marker E-cadherin (*CDH1*) was observed in SNU-449 cells treated with galunisertib (Table S2). These results are in agreement with previous data reporting that galunisertib reduces the stemness-gene profile of invasive HCC cells (including the SNU-449 cell line) and induces the acquisition of a more epithelial-like morphology [8,30]. Galunisertib was also shown to reduce

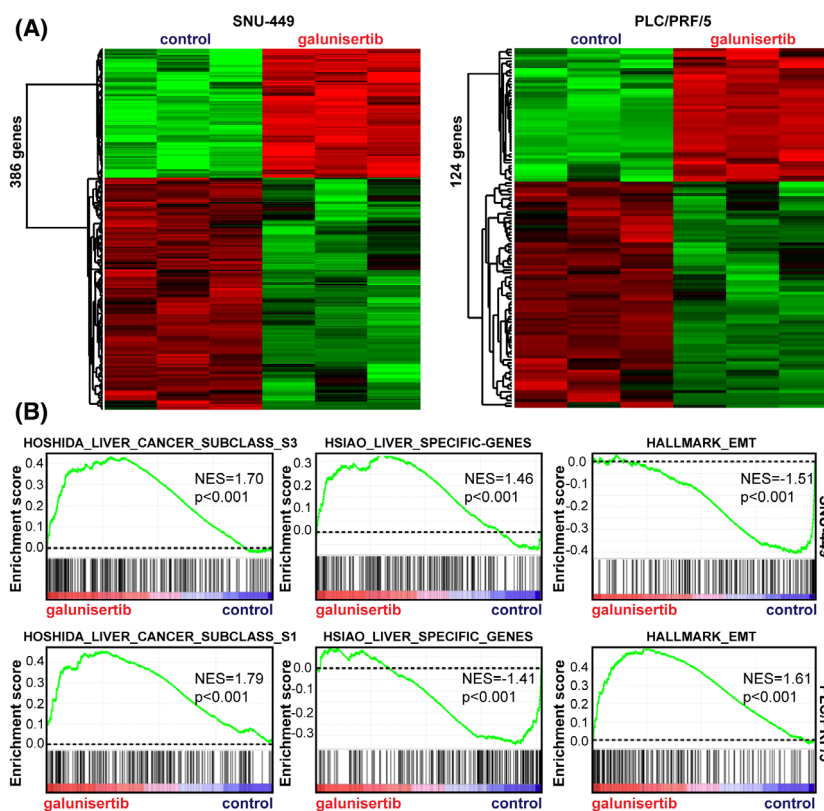


Fig. 2. Galunisertib signatures in PLC/PRF/5 and SNU-449 cells. (A) Hierarchical clustering of genes up- and down-regulated in SNU-449 (left panel) and PLC/PRF/5 (right panel) after a galunisertib treatment (10 μ M, 16 h) (FC > 2; $P < 0.001$). (B) GSEA using the gene expression profiles of SNU-449 (upper panel) and PLC/PRF/5 (lower panel) after a treatment with galunisertib vs control. GSEA highlighted a cell-specific enrichment of signatures associated with the molecular classification of human HCC (e.g., HOSHIDA_LIVER_CANCER_SUBCLASS_S1 and SUBCLASS_S3 [31]), hepatocyte differentiation (HSIAO_LIVER_SPECIFIC_GENES [33]) and EMT (HALLMARK_EMT [32]).

the migration, clonogenicity and the spheroid formation ability of HCC invasive cells [8,30,37]. Interestingly, an opposite picture was highlighted for the PLC/PRF/5 cell line since a positive enrichment of unfavorable signatures was observed in cells treated with galunisertib, including the HOSHIDA_LIVER_CANCER SUBCLASS_S1 and the HALLMARK_EMT signatures (Fig. 2B). In addition, a negative enrichment of the HSIAO_LIVER_SPECIFIC_GENES signature was observed, suggesting that galunisertib may switch the PLC/PRF/5 cell line toward a less differentiated phenotype (Fig. 2B). Mechanistically, we hypothesize that liver-enriched transcription factors involved in maintaining a well-differentiated hepatocyte phenotype are repressed by galunisertib in the PLC/PRF/5 cell line and induced in the SNU-449 cell line. Supporting this hypothesis, galunisertib was shown to reduce the expression of *HNF1B*, *HNF4A*, and *ONECUT1* (aka *HNF6A*) involved in maintaining a well-differentiated hepatocyte-like phenotype in the PLC/PRF/5, while it induced the expression of

HNF1A, *FOXA2* (aka *HNF3B*), and *ONECUT1* in SNU-449 (Fig. S2). Collectively, the results highlighted a differential galunisertib-induced transcriptional reprogramming in PLC/PRF/5 and SNU-449 cells possibly associated with different prognosis in human HCC. It is important to note that galunisertib is a small selective kinase inhibitor for TGF β , activin and nodal type I serine/threonine kinase receptors. Thus, we cannot exclude that part of the observed signatures is also connected to the inhibition of activin and nodal pathways, which have been also associated with HCC. In addition, TGF β can signal via SMAD and non-SMAD signaling pathways like TGF β /PI3K/AKT or TGF β /NFKB are thought to play a role in aggressive cancers possibly in a type I receptor kinase-independent manner (and thus are not blocked by galunisertib). Accordingly, enrichments of PI3K and NFKB signatures were observed upon TGF β exposure in PLC/PRF/5 and SNU-449 cell lines. However, upon galunisertib exposure, these enrichments were not statistically significant anymore

suggesting that they were dependent on type I receptor kinase (Fig. S3). Thus, one can assume that in our experimental conditions, most of the observed effects on gene expression upon galunisertib exposure are related to the SMAD canonical signaling.

Galunisertib- and TGF β -associated signatures in PLC/PRF/5 and SNU-449 cells identified human HCC with different prognosis

Gene set enrichment analysis suggested that whereas possibly beneficial in SNU-449-like HCC, galunisertib-induced cell reprogramming could be detrimental in PLC/PRF/5-like HCC, as regards limiting tumor progression and improving patient survival. To test this hypothesis from a clinical perspective, we integrated cell-specific galunisertib and TGF β signatures with the gene expression profiles of 139 cases of human HCC, as performed above. Accordingly, we first established and then integrated the gene expression profiles of PLC/PRF/5 and SNU-449 cells treated with TGF β in presence/absence of galunisertib (Fig. 3). For both cell lines, clustering analysis identified two clusters, one including the samples corresponding to untreated control cells or cells treated with TGF β (thereafter referred to control) and another one including the samples corresponding to cells treated with galunisertib, alone or in combination with TGF β (thereafter referred to galunisertib) (Fig. 3A,D). Interestingly, human HCC were not randomly distributed between the two clusters and the distribution appeared to be highly dependent on the cell line. Thus, in SNU-449, the galunisertib cluster was associated with human HCC previously associated with a better prognosis (Fig. 3A), while the control cluster was associated with a poor prognosis (Fig. 3A) [21,22]. Statistical analysis of HCC subgroups confirmed these observations since the galunisertib cluster included significantly more HCC associated with a good survival, no sign of vascular invasion and previously reported signatures of better prognosis, that is, the so-called hepatocyte [22], c-MET/HGF-negative [20], and early TGF β signatures [16] (Fig. 3B). Accordingly, human HCC from the galunisertib cluster exhibited a longer overall survival as compared to HCC from the control cluster (Fig. 3C). Suggesting that galunisertib could be effective in Hoshida's S1 HCC subtype, a phase 2 clinical trial demonstrated efficacy in TGF β activated tumors with low alpha-fetoprotein (AFP) level [13]. Similar to previous reports, galunisertib exerted limited anti-proliferative effects in HCC cell lines [9,37]. However, it was suggested that galunisertib exerted anti-invasive

properties in cell lines defined by the “late-TGF β signature” (similar to SNU-449), in agreement with our results showing that the galunisertib signature derived from SNU-449 cells was associated with better clinical outcomes. Very interestingly, performing the same analysis using the signatures established in PLC/PRF/5 cells resulted in completely opposite observations (Fig. 3D,E). Indeed, while the control and TGF β -associated clusters were recapitulating human HCC with a better prognosis, the galunisertib cluster recapitulated human HCC with poor prognosis signatures and a reduced overall survival (Fig. 3E,F). GSEA also highlighted that a statistically significant relationship between the HOSHIDA_LIVER_CANCER SUBCLASS_S1 subtype and human HCC with poor prognosis associated with the SNU-449 signature. Conversely, a significant relationship between the HOSHIDA_LIVER_CANCER SUBCLASS_S3 subtype and human HCC with better prognosis associated with the PLC/PRF/5 signature was observed (Fig. S4A). More interestingly and fully supporting our results, the same approach using human HCC tumors classified according to the galunisertib signatures established in PLC/PRF/5 and SNU-449 cell lines resulted in opposite observations (Fig. S4B,C). We further validated these results using an independent cohort of 225 human HCC (GSE14520) (Fig. 4). For the SNU-449 cell line, data integration similarly identified two clusters, the galunisertib cluster being representative of HCC with a better prognosis as regard to the Barcelona Clinic Liver Cancer (BCLC) classification, Tumor Node Metastasis (TNM) staging, serum AFP level and metastasis propensity (Fig. 4A,B). Kaplan–Meier plot and log-rank statistics confirmed that HCC in the galunisertib cluster exhibited a significantly better overall survival (Fig. 4C). On the contrary, for the PLC/PRF/5 cell line, the galunisertib cluster showed a significant enrichment in HCC associated with advanced BCLC and TNM stages (BCLC C and TNM stage III), a high serum AFP level ($> 300 \text{ ng}\cdot\text{mL}^{-1}$), and a higher risk of metastasis (Fig. 4D,E). Accordingly, Kaplan–Meier plot and log-rank statistics highlighted a significant decrease in overall survival for patients included in the galunisertib cluster (Fig. 4F). Collectively, these results demonstrated that galunisertib- and TGF β -induced gene expression profiles in PLC/PRF/5 and SNU-449 cell lines recapitulated human HCC with different prognosis. More importantly, the results strongly suggest that galunisertib-driven transcriptional reprogramming in PLC/PRF/5-like HCC (i.e., possibly well-differentiated early-stage HCC) could be detrimental. However, a recent quantitative proteomic

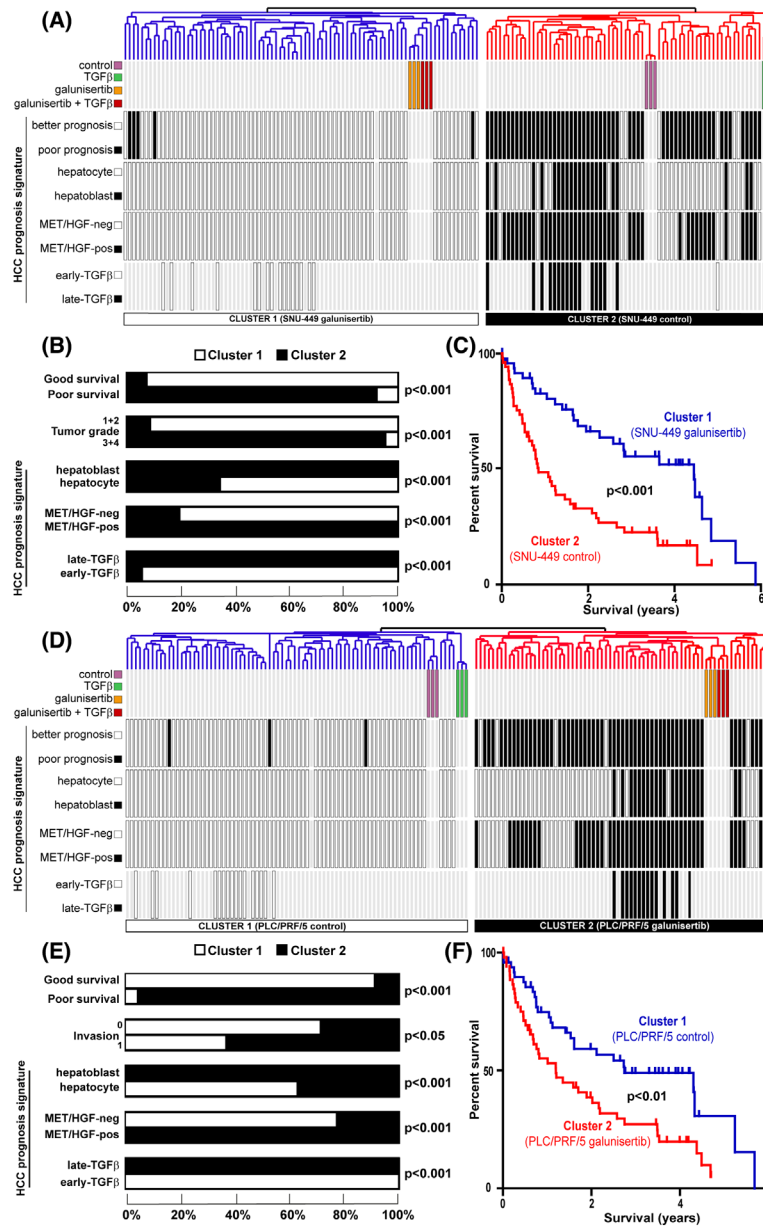


Fig. 3. Clinical relevance of galunisertib- and TGF β -associated signatures derived from SNU-449 and PLC/PRF/5 cells. (A) Dendrogram overview of *in vitro* experiments performed in SNU-449 cells integrated with 139 cases of human HCC. Clustering analysis was based on the expression of genes differentially expressed between the four conditions (i.e., SNU-449 cells treated with TGF β and galunisertib, alone or in combination, versus untreated control cells). Two main clusters were identified. Cluster 1 included cells treated with galunisertib (in presence and absence of TGF β co-treatment) and cluster 2 included untreated control cells and cells treated with TGF β . Distribution of human HCC samples between previously described subgroups with respect to survival (better vs. poor prognosis) [21], cell origin (hepatocyte vs. hepatoblast) [22], activation of c-MET/HGF (negative vs. positive) [20] and TGF β [16] signaling (early vs. late) is indicated on the left side. (B) Statistical analysis (chi-squared test) of HCC distribution between clusters 1 and 2 based on previous gene expression signatures and clinical parameters. (C) Kaplan–Meier plot and log-rank statistics revealed a significant ($P < 0.001$) improved overall survival for patients included in cluster 1 (galunisertib-associated). (D) Integrative transcriptomic analysis using galunisertib- and TGF β -associated signatures established in the PLC/PRF/5 cell line as performed in (A). Contrary to the SNU-449 cell line, cluster 1 included untreated control PLC/PRF/5 cells and cells treated with TGF β while cluster 2 included cells treated with galunisertib (in presence and absence of TGF β). (E) Statistical analysis (chi-squared test) of HCC distribution between clusters 1 and 2 based on previous gene expression signatures and clinical parameters. (F) Kaplan–Meier plot and log-rank statistics revealed a significant ($P < 0.01$) decreased overall survival for patients included in cluster 2 (galunisertib-associated).

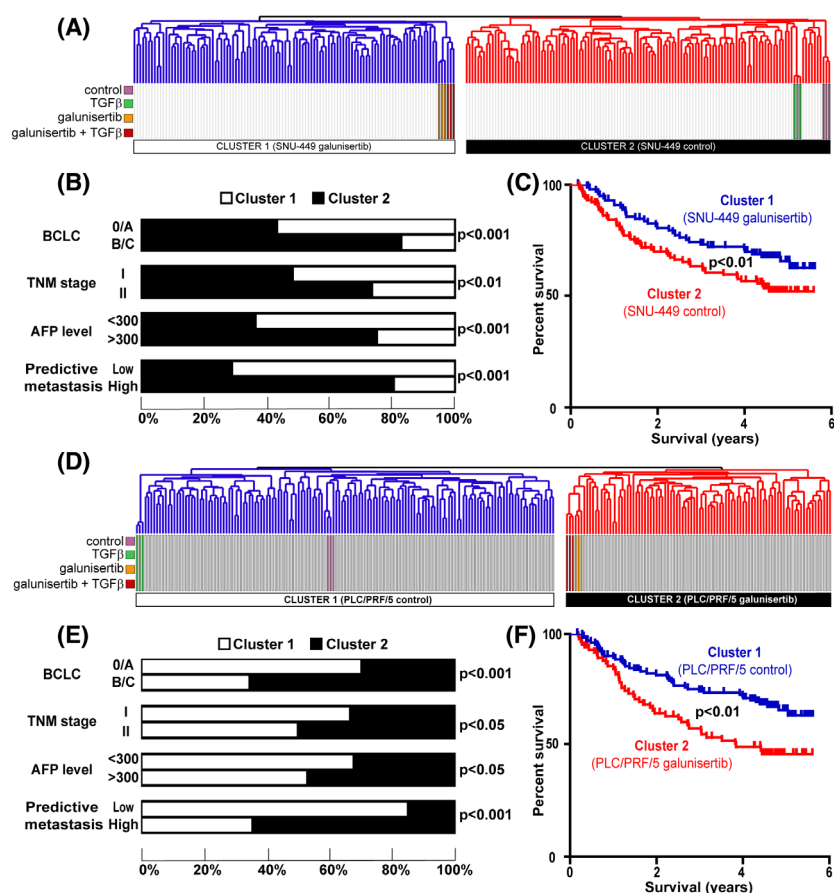


Fig. 4. Validation of the clinical relevance of galunisertib- and TGF β -associated signatures derived from SNU-449 and PLC/PRF/5 cells in an independent cohort of patients with HCC. (A) Dendrogram overview of *in vitro* experiments in SNU-449 cells integrated with 225 cases of human HCC (NCI validating set, [GSE14520](#)). Clustering analysis was based on the expression of genes differentially expressed between the four conditions (i.e., SNU-449 cells treated with TGF β and galunisertib, alone or in combination, versus untreated control cells). Two main clusters were identified. Cluster 1 included cells treated with galunisertib (in presence and absence of TGF β co-treatment) and cluster 2 included untreated control cells and cells treated with TGF β . (B) Statistical analysis (chi-squared test) of HCC distribution between clusters 1 and 2 based on previous gene expression signatures and clinical parameters. Cluster 2 shows a significant enrichment in human HCC with the following features: advanced stage (BCLC B/C), TNM stage II, higher serum AFP level and a high risk of metastasis. (C) Kaplan–Meier plot and log-rank statistics analysis revealed a significant decrease in overall survival for patients included in cluster 2 ($P < 0.001$). (D) Integrative transcriptomic analysis using galunisertib- and TGF β -associated signatures established in PLC/PRF/5 cells as performed in (A). Contrary to the SNU-449 cell line, cluster 1 included untreated control PLC/PRF/5 cells and cells treated with TGF β while cluster 2 included cells treated with galunisertib (in presence and absence of TGF β). (E) Statistical analysis (chi-squared test) of HCC distribution between clusters 1 and 2 based on previous gene expression signatures and clinical parameters. Cluster 2 shows a significant enrichment in human HCC with the following features: advanced stage (BCLC B/C), TNM stage II, higher serum AFP level and a high risk of metastasis. (F) Kaplan–Meier plot and log-rank statistics analysis revealed a significant decrease in overall survival for patients included in cluster 2 ($P < 0.001$).

analysis highlighted a molecular heterogeneity of early-stage HCC (BCLC 0 and A) and demonstrated an activation of the TGF β pathway in HCC with microscopic vascular invasion, elevated AFP, shorter survival, and tumor recurrence [38]. Poor prognosis signatures were enriched in this early HCC subtype, including the late TGF β signature [16]. Altogether, these data suggest that some early-stage HCC could also be eligible for therapeutic inhibition of the TGF β pathway.

SERPINF2 as a putative biomarker for galunisertib in HCC

Identifying the patients who may benefit from galunisertib treatment represents a critical issue in the design of clinical trials given that inhibiting the TGF β pathway in HCC in which TGF β still limits tumor growth may contribute to tumor progression. However, very few biomarkers have been identified to distinguish those patients that may benefit from galunisertib from those

that may not [30,39]. A recent study suggests that SKIL, PMEPA1, and TGF β 1 could be important biomarkers for selecting patients more likely to respond to galunisertib in HCC, although the mRNA levels of these biomarkers do not correlate with the levels of circulating proteins in patients [39]. Thus, from the galunisertib- and TGF β -associated signatures established in SNU-449 and PLC/PRF/5 cell lines, we selected the genes significantly associated with patient survival (GSE1898 and GSE4024). From the 58 and 12 genes predictive of

survival in SNU-449 and PLC/PRF/5 signatures, respectively, only three genes were in common: *BDH1*, *RGS9*, and *SERPINF2* (Fig. 5A). We further validated in an independent HCC dataset (TCGA-LIHC) that a high expression of *SERPINF2* or *BDH1* was significantly correlated with a better survival (Fig. 5B). Interestingly, the expression of *SERPINF2* was repressed by galunisertib in PLC/PRF/5 and induced in SNU-449 cell line (Fig. 5C). At a basal level, a higher expression of *SERPINF2* was observed in PLC/PRF/5 cells (Fig. 5D).

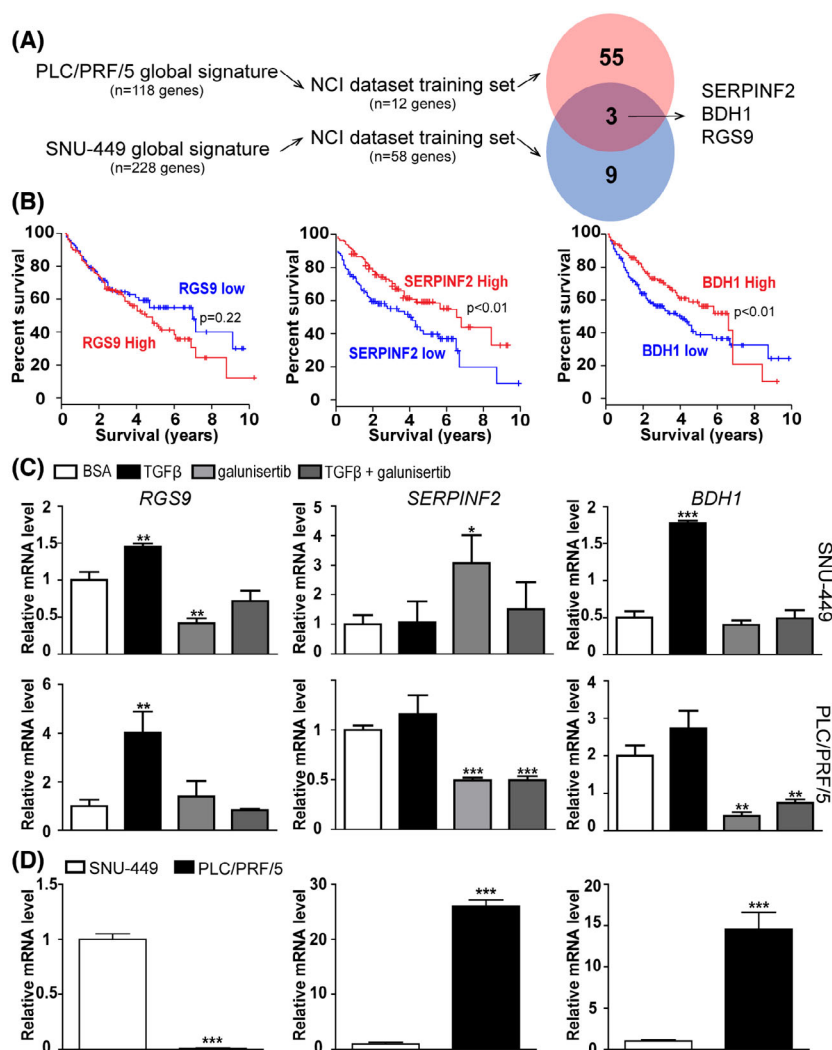


Fig. 5. Identification of *SERPINF2* as a putative marker of galunisertib efficacy in HCC. (A) Genes associated with the overall survival in human HCC from the galunisertib- and TGF β -associated signatures established in SNU-449 and PLC/PRF/5 cells, as described in Fig. 3. Venn diagram unraveled three common genes negatively correlated with patient outcome. (B) Analysis of overall survival by Kaplan–Meier plot and log-rank statistics in HCC from TCGA (LIHC dataset) based on the expression of candidate genes (blue curve: low expression; red curve: high expression). (C) Gene expression analysis of *RGS9*, *SERPINF2* and *BDH1* in SNU-449 (upper panels) and PLC/PRF/5 (lower panels) cells treated with TGF β and galunisertib, alone or in combination. (D) Gene expression analysis of *RGS9*, *SERPINF2* and *BDH1*, differentially expressed between SNU-449 and PLC-PRF/5 cells. In (C) and (D) data are presented as bar plots with mean \pm SD and were compared using the Student's *t*-test, **P* < 0.05, ***P* < 0.01, and ****P* < 0.001 (*n* = 3 independent experiments).

In addition, the expression of *SERPINF2* was able to define human HCC with variable prognosis, a high expression being associated with a better survival, no sign of vascular invasion, a well-differentiated hepatocyte signature, a lower AFP level, and an early TGF β signature (Fig. S5). Because *SERPINF2* encodes a secreted plasma protein, we suggest that it may serve as a clinically relevant companion biomarker for galunisertib in HCC. *SERPINF2* was previously identified among 41 hub driver-genes predictive of differentiation, being expressed in well-differentiated cell lines [29]. Up-regulation of *SERPINF2* in exosomes of good responders was also reported in rectal cancer patients with different responses to neoadjuvant radiotherapy [40]. In addition, *SERPINF2* has been proposed as a serum marker of fibrosis progression for the follow-up of patients hepatitis C [41] as well as an independent prognostic marker highly expressed in HCC with a better survival [42].

In conclusion, our study reports specific gene expression signatures suggestive of beneficial or adverse effects of galunisertib in HCC cell lines with clinical relevance in human HCC. How galunisertib drives detrimental effects in specific subsets of HCC remains to be elucidated. However, gene expression profiling presented in the study highlighted opposite pictures of galunisertib treatment in PLC/PRF/5 and SNU-449 cell lines and suggested that galunisertib may favor an EMT-like phenotype in well-differentiated tumors by possibly repressing liver-enriched transcription factors. It is also important to emphasize that our study only focused on the impact of the TGF β pathway and its inhibition on the phenotype of tumor cells. However, TGF β exerts critical impact on cells from the tumor microenvironment, including fibroblast-like cells contributing to ECM remodeling and immune cells [6,43,44]. TGF β contributes to the bidirectional cross-talk between tumor cells and their microenvironment and thus to the regulation of tumor progression and response to therapies. Thus, it would be important to take into account this parameter in future studies [6].

Acknowledgments

The authors are supported by Inserm, Université de Rennes 1, Région Bretagne, Ministère de l'Enseignement Supérieur de la Recherche et de l'Innovation, Ligue Nationale Contre le Cancer, Ligue Contre le Cancer (CD22, CD35, CD44, CD85) (R22026NN), Fondation ARC (R21043NN), INCa and ITMO Cancer AVIESAN (Alliance Nationale pour les Sciences de la Vie et de la Santé) dans le cadre du Plan cancer (Noncoding RNA in cancerology: fundamental to translational) (C20014NS).

This work was supported by a grant from the French Ministry of Health and the French National Cancer Institute, PRT-K20-136, CHU Rennes, CLCC Eugène Marquis, Rennes (R21095NN). BM was supported from a fellowship from Association de Chirurgie Hépatobilio-Pancréatique et Transplantation Hépatique (ACHBT) and CHU Rennes.

Conflict of interest

The authors declare no conflict of interest.

Peer review

The peer review history for this article is available at <https://www.webofscience.com/api/gateway/wos/peer-review/10.1002/2211-5463.13647>.

Data accessibility

The datasets used and produced in this study are available from the gene expression omnibus database with the following accession numbers: GSE211806, GSE1898, GSE4024, and GSE14520 (e.g., <https://www.ncbi.nlm.nih.gov/geo/query/acc.cgi?acc=GSE211806>).

Author contributions

CC conceived and designed the project; MD, BM, KBe, GA, CL, and CC acquired the data; MD and CC analyzed and interpreted the data; MD and CC wrote the paper; LS, KBo, and CC acquired funding and supervised the study; CC, TF, and RL revised the manuscript; all authors reviewed and edited the manuscript.

References

- 1 Sung H, Ferlay J, Siegel RL, Laversanne M, Soerjomataram I, Jemal A and Bray F (2021) Global cancer statistics 2020: GLOBOCAN estimates of incidence and mortality worldwide for 36 cancers in 185 countries. *CA Cancer J Clin* **71**, 209–249.
- 2 Reig M, Forner A, Rimola J, Ferrer-Fabrega J, Burrel M, Garcia-Criado A, Kelley RK, Galle PR, Mazzaferro V, Salem R *et al.* (2022) BCLC strategy for prognosis prediction and treatment recommendation: the 2022 update. *J Hepatol* **76**, 681–693.
- 3 Bruix J, Chan SL, Galle PR, Rimassa L and Sangro B (2021) Systemic treatment of hepatocellular carcinoma: an EASL position paper. *J Hepatol* **75**, 960–974.
- 4 Sidali S, Trepo E, Sutter O and Nault JC (2022) New concepts in the treatment of hepatocellular carcinoma. *United European Gastroenterol J* **10**, 765–774.

- 5 Giannelli G, Villa E and Lahn M (2014) Transforming growth factor-beta as a therapeutic target in hepatocellular carcinoma. *Cancer Res* **74**, 1890–1894.
- 6 Dituri F, Mancarella S, Cigliano A, Chieti A and Giannelli G (2019) TGF-beta as multifaceted orchestrator in HCC progression: signaling, EMT, immune microenvironment, and novel therapeutic perspectives. *Semin Liver Dis* **39**, 53–69.
- 7 Larson C, Oronsky B, Carter CA, Oronsky A, Knox SJ, Sher D and Reid TR (2020) TGF-beta: a master immune regulator. *Expert Opin Ther Targets* **24**, 427–438.
- 8 Rani B, Malfettone A, Dituri F, Soukupova J, Lupo L, Mancarella S, Fabregat I and Giannelli G (2018) Galunisertib suppresses the staminal phenotype in hepatocellular carcinoma by modulating CD44 expression. *Cell Death Dis* **9**, 373.
- 9 Serova M, Tijeras-Raballand A, Dos Santos C, Albuquerque M, Paradis V, Neuzillet C, Benhadji KA, Raymond E, Faivre S and de Gramont A (2015) Effects of TGF-beta signalling inhibition with galunisertib (LY2157299) in hepatocellular carcinoma models and in ex vivo whole tumor tissue samples from patients. *Oncotarget* **6**, 21614–21627.
- 10 Ungerleider N, Han C, Zhang J, Yao L and Wu T (2017) TGFbeta signaling confers sorafenib resistance via induction of multiple RTKs in hepatocellular carcinoma cells. *Mol Carcinog* **56**, 1302–1311.
- 11 Harding JJ, Do RK, Yaqubie A, Cleverly A, Zhao Y, Gueorguieva I, Lahn M, Benhadji KA, Kelley RK and Abou-Alfa GK (2021) Phase 1b study of galunisertib and ramucirumab in patients with advanced hepatocellular carcinoma. *Cancer Med* **10**, 3059–3067.
- 12 Kelley RK, Gane E, Assenat E, Siebler J, Galle PR, Merle P, Hourmand IO, Cleverly A, Zhao Y, Gueorguieva I *et al.* (2019) A phase 2 study of galunisertib (TGF-beta1 receptor type I inhibitor) and sorafenib in patients with advanced hepatocellular carcinoma. *Clin Transl Gastroenterol* **10**, e00056.
- 13 Faivre S, Santoro A, Kelley RK, Gane E, Costentin CE, Gueorguieva I, Smith C, Cleverly A, Lahn MM, Raymond E *et al.* (2019) Novel transforming growth factor beta receptor I kinase inhibitor galunisertib (LY2157299) in advanced hepatocellular carcinoma. *Liver Int* **39**, 1468–1477.
- 14 Allain C, Angenard G, Clement B and Coulouarn C (2016) Integrative genomic analysis identifies the core transcriptional hallmarks of human hepatocellular carcinoma. *Cancer Res* **76**, 6374–6381.
- 15 Bevant K, Desoteux M, Angenard G, Pineau R, Caruso S, Louis C, Papoutsoglou P, Sulpice L, Gilot D, Zucman-Rossi J *et al.* (2022) TGFbeta-induced FOXS1 controls epithelial-mesenchymal transition and predicts a poor prognosis in liver cancer. *Hepatol Commun* **6**, 1157–1171.
- 16 Coulouarn C, Factor VM and Thorgeirsson SS (2008) Transforming growth factor-beta gene expression signature in mouse hepatocytes predicts clinical outcome in human cancer. *Hepatology* **47**, 2059–2067.
- 17 Berriz GF, Beaver JE, Cenik C, Tasan M and Roth FP (2009) Next generation software for functional trend analysis. *Bioinformatics* **25**, 3043–3044.
- 18 Coulouarn C, Factor VM, Andersen JB, Durkin ME and Thorgeirsson SS (2009) Loss of miR-122 expression in liver cancer correlates with suppression of the hepatic phenotype and gain of metastatic properties. *Oncogene* **28**, 3526–3536.
- 19 Desoteux M, Louis C, Bevant K, Glaise D and Coulouarn C (2021) A minimal subset of seven genes associated with tumor hepatocyte differentiation predicts a poor prognosis in human hepatocellular carcinoma. *Cancers (Basel)* **13**, 5624.
- 20 Kaposi-Novak P, Lee JS, Gomez-Quiroz L, Coulouarn C, Factor VM and Thorgeirsson SS (2006) Met-regulated expression signature defines a subset of human hepatocellular carcinomas with poor prognosis and aggressive phenotype. *J Clin Invest* **116**, 1582–1595.
- 21 Lee JS, Chu IS, Heo J, Calvisi DF, Sun Z, Roskams T, Durnez A, Demetris AJ and Thorgeirsson SS (2004) Classification and prediction of survival in hepatocellular carcinoma by gene expression profiling. *Hepatology* **40**, 667–676.
- 22 Lee JS, Heo J, Libbrecht L, Chu IS, Kaposi-Novak P, Calvisi DF, Mikaelyan A, Roberts LR, Demetris AJ, Sun Z *et al.* (2006) A novel prognostic subtype of human hepatocellular carcinoma derived from hepatic progenitor cells. *Nat Med* **12**, 410–416.
- 23 Roessler S, Jia HL, Budhu A, Forgues M, Ye QH, Lee JS, Thorgeirsson SS, Sun Z, Tang ZY, Qin LX *et al.* (2010) A unique metastasis gene signature enables prediction of tumor relapse in early-stage hepatocellular carcinoma patients. *Cancer Res* **70**, 10202–10212.
- 24 Coulouarn C, Corlu A, Glaise D, Guenon I, Thorgeirsson SS and Clement B (2012) Hepatocyte-stellate cell cross-talk in the liver engenders a permissive inflammatory microenvironment that drives progression in hepatocellular carcinoma. *Cancer Res* **72**, 2533–2542.
- 25 Lee JS and Thorgeirsson SS (2002) Functional and genomic implications of global gene expression profiles in cell lines from human hepatocellular cancer. *Hepatology* **35**, 1134–1143.
- 26 Staib F, Krupp M, Maass T, Itzel T, Weinmann A, Lee JS, Schmidt B, Muller M, Thorgeirsson SS, Galle PR *et al.* (2014) CellMinerHCC: a microarray-based expression database for hepatocellular carcinoma cell lines. *Liver Int* **34**, 621–631.
- 27 Caruso S, Calatayud AL, Pilet J, La Bella T, Rekik S, Imbeaud S, Letouze E, Meunier L, Bayard Q, Rohr-Udilova N *et al.* (2019) Analysis of liver cancer cell lines identifies agents with likely efficacy against

- hepatocellular carcinoma and markers of response. *Gastroenterology* **157**, 760–776.
- 28 Cui JF, Liu YK, Zhang LJ, Shen HL, Song HY, Dai Z, Yu YL, Zhang Y, Sun RX, Chen J *et al.* (2006) Identification of metastasis candidate proteins among HCC cell lines by comparative proteome and biological function analysis of S100A4 in metastasis *in vitro*. *Proteomics* **6**, 5953–5961.
- 29 Agioutantis PC, Loutrari H and Kolisis FN (2020) Computational analysis of transcriptomic and proteomic data for deciphering molecular heterogeneity and drug responsiveness in model human hepatocellular carcinoma cell lines. *Genes (Basel)* **11**, 623.
- 30 Bertran E, Crosas-Molist E, Sancho P, Caja L, Lopez-Luque J, Navarro E, Egea G, Lastra R, Serrano T, Ramos E *et al.* (2013) Overactivation of the TGF- β pathway confers a mesenchymal-like phenotype and CXCR4-dependent migratory properties to liver tumor cells. *Hepatology* **58**, 2032–2044.
- 31 Hoshida Y, Nijman SM, Kobayashi M, Chan JA, Brunet JP, Chiang DY, Villanueva A, Newell P, Ikeda K, Hashimoto M *et al.* (2009) Integrative transcriptome analysis reveals common molecular subclasses of human hepatocellular carcinoma. *Cancer Res* **69**, 7385–7392.
- 32 Liberzon A, Birger C, Thorvaldsdottir H, Ghandi M, Mesirov JP and Tamayo P (2015) The molecular signatures database (MSigDB) hallmark gene set collection. *Cell Syst* **1**, 417–425.
- 33 Hsiao LL, Dangond F, Yoshida T, Hong R, Jensen RV, Misra J, Dillon W, Lee KF, Clark KE, Haverty P *et al.* (2001) A compendium of gene expression in normal human tissues. *Physiol Genomics* **7**, 97–104.
- 34 Giannelli G, Mikulits W, Dooley S, Fabregat I, Moustakas A, ten Dijke P, Portincasa P, Winter P, Janssen R, Leporatti S *et al.* (2016) The rationale for targeting TGF- β in chronic liver diseases. *Eur J Clin Invest* **46**, 349–361.
- 35 Herbertz S, Sawyer JS, Stauber AJ, Gueorguieva I, Driscoll KE, Estrem ST, Cleverly AL, Desai D, Guba SC, Benhadji KA *et al.* (2015) Clinical development of galunisertib (LY2157299 monohydrate), a small molecule inhibitor of transforming growth factor- β signaling pathway. *Drug Des Devel Ther* **9**, 4479–4499.
- 36 Massague J (2012) TGF β signalling in context. *Nat Rev Mol Cell Biol* **13**, 616–630.
- 37 Dituri F, Mazzocca A, Fernando J, Peidro FJ, Papappicco P, Fabregat I, De Santis F, Paradiso A, Sabba C and Giannelli G (2013) Differential inhibition of the TGF- β signaling pathway in HCC cells using the small molecule inhibitor LY2157299 and the D10 monoclonal antibody against TGF- β receptor type II. *PLoS One* **8**, e67109.
- 38 Jiang Y, Sun A, Zhao Y, Ying W, Sun H, Yang X, Xing B, Sun W, Ren L, Hu B *et al.* (2019) Proteomics identifies new therapeutic targets of early-stage hepatocellular carcinoma. *Nature* **567**, 257–261.
- 39 Cao Y, Agarwal R, Dituri F, Lupo L, Trerotoli P, Mancarella S, Winter P and Giannelli G (2017) NGS-based transcriptome profiling reveals biomarkers for companion diagnostics of the TGF- β receptor blocker galunisertib in HCC. *Cell Death Dis* **8**, e2634.
- 40 Strybel U, Marczak L, Zeman M, Polanski K, Mielanczyk L, Klymenko O, Samelak-Czajka A, Jackowiak P, Smolarz M, Chekan M *et al.* (2022) Molecular composition of serum exosomes could discriminate rectal cancer patients with different responses to neoadjuvant radiotherapy. *Cancers (Basel)* **14**, 993.
- 41 Caillot F, Hiron M, Gorla O, Gueudin M, Francois A, Scotte M, Daveau M and Salier JP (2009) Novel serum markers of fibrosis progression for the follow-up of hepatitis C virus-infected patients. *Am J Pathol* **175**, 46–53.
- 42 Hou M (2022) Exploring novel independent prognostic biomarkers for hepatocellular carcinoma based on TCGA and GEO databases. *Medicine (Baltimore)* **101**, e31376.
- 43 Mancarella S, Krol S, Crovace A, Leporatti S, Dituri F, Frusciantone M and Giannelli G (2019) Validation of hepatocellular carcinoma experimental models for TGF- β promoting tumor progression. *Cancers (Basel)* **11**, 1510.
- 44 Caja L, Dituri F, Mancarella S, Caballero-Diaz D, Moustakas A, Giannelli G and Fabregat I (2018) TGF- β and the tissue microenvironment: relevance in fibrosis and cancer. *Int J Mol Sci* **19**, 1294.

Supporting information

Additional supporting information may be found online in the Supporting Information section at the end of the article.

Fig. S1. SNU-449 and PLC/PRF/5 cell lines exhibit a mesenchymal- and epithelial-like phenotype, respectively. (A) Immunofluorescence micrographs of epithelial (CDH1) and mesenchymal (Vimentin, VIM) markers in SNU-449 and PLC/PRF/5 cells at basal level. Scale bar: 50 μ m. (B) Quantitative PCR analysis of CDH1 and VIM expression. ***P < 0.001; n=3. (C) Quantitative analysis by ELISA of TGF β protein expression in the supernatant of SNU-449 and PLC-PRF-5 cells after 48 hours of culture. In (B) and (C) data are presented as bar plots with mean \pm SD and were compared using the Student's t test, ***P < 0.001 (n = 3 independent experiments).

Fig. S2. Relative expression of genes encoding liver-enriched transcription factors in PLC/PRF/5 (upper panels) and SNU-449 (lower panels) HCC cell lines at

basal level (CTRL) as well as upon TGF β (TGFb) and galunisertib (LY) exposure, alone (LY) or in combination (TGFb+LY). Data are presented as bar plots with mean \pm SD and were compared using the Student's *t* test, **P* < 0.05 (n = 3 independent experiments).

Fig. S3. Gene set enrichment analysis (GSEA) of non-SMAD PI3K (upper 4 panels) and NFKB (lower 4 panels) signaling pathway signatures in the gene expression profiles of PLC/PRF/5 (A) and SNU-449 (B) HCC cell lines upon TGF β exposure, alone (TGF β) or in combination with galunisertib (TGF β +galunisertib). The following curated signatures have been used: REACTOME_CONSTITUTIVE_SIGNALING_BY_ABERRANT_PI3K_IN_CANCER.v2023.1.Hs.grp and NFKAPPAB_01.v2023.1.Hs.grp (<https://www.gsea-msigdb.org/gsea/msigdb/cards/>). NES, normalized enrichment score, as determined by GSEA.

Fig. S4. Gene set enrichment analysis (GSEA) of human HCC tumors (139 cases from the GSE1898 and GSE4024 datasets) defined by the signature of genes differentially expressed between SNU-449 and PLC/PRF/5 cell lines at basal level (A), as described in

Fig. 1E, or upon galunisertib exposure in SNU-449 cell line (B), as described in Fig. 3C or in PLC/PRF/5 cell line (C), as described in Fig. 3F. GSEA was focused on HOSHIDA_LIVER_CANCER SUBCLASS_S1 (left panels) or _S3 (right panels) signatures.

Fig. S5. Clinical relevance of human HCC (n=139 cases, GSE1898 and GSE4024) defined by a high (n=70 cases) versus low (n=69 cases) expression of SERPINF2 (median SERPINF2 expression was used to defined high versus low expressing groups). Statistical analysis (chi-squared test) of HCC distribution between high versus low SERPINF2 expressing groups was based on previous gene expression signatures and clinical parameters.

Table S1. List of genes differentially expressed between the PLC/PRF/5 and SNU-449 cell lines (fold-change FC > 2; *P* < 0.001).

Table S2. List of genes differentially expressed by galunisertib in SNU-449 cells (fold-change FC > 2; *P* < 0.01).

Table S3. List of genes differentially expressed by galunisertib in PLC/PRF/5 cells (fold-change FC > 2; *P* < 0.01).