



HAL
open science

Shapley effects and proportional marginal effects for global sensitivity analysis: application to computed tomography scan organ dose estimation

Anais Foucault, Marouane Il Idrissi, Bertrand Iooss, Sophie Ancelet

► To cite this version:

Anais Foucault, Marouane Il Idrissi, Bertrand Iooss, Sophie Ancelet. Shapley effects and proportional marginal effects for global sensitivity analysis: application to computed tomography scan organ dose estimation. 2023. hal-04114533

HAL Id: hal-04114533

<https://hal.science/hal-04114533>

Preprint submitted on 2 Jun 2023

HAL is a multi-disciplinary open access archive for the deposit and dissemination of scientific research documents, whether they are published or not. The documents may come from teaching and research institutions in France or abroad, or from public or private research centers.

L'archive ouverte pluridisciplinaire **HAL**, est destinée au dépôt et à la diffusion de documents scientifiques de niveau recherche, publiés ou non, émanant des établissements d'enseignement et de recherche français ou étrangers, des laboratoires publics ou privés.

Shapley effects and proportional marginal effects for global sensitivity analysis: application to computed tomography scan organ dose estimation

Anaïs Foucault^a, Marouane Il Idrissi^{b,c,d}, Bertrand Iooss^{b,c,d}, Sophie Ancelet^{a,e}

^a*Institut de Radioprotection et de Sûreté Nucléaire (IRSN), PSE-SANTE/SESANE/LEPID, BP 17, 92262 Fontenay-aux-Roses, France*

^b*EDF Lab Chatou, 6 Quai Watier, 78401 Chatou, France*

^c*SINCLAIR AI Lab., Saclay, France*

^d*Institut de Mathématiques de Toulouse, 31062 Toulouse, France*

^e*Corresponding Author - Email: sophie.ancelet@irsn.fr*

Abstract

Concerns have been raised about possible cancer risks after exposure to computed tomography (CT) scans in childhood. The health effects of ionizing radiation are then estimated from the absorbed dose to the organs of interest which is calculated, for each CT scan, from dosimetric numerical models, like the one proposed in the NCICT software. Given that a dosimetric model depends on input parameters which are most often uncertain, the calculation of absorbed doses is inherently uncertain. A current methodological challenge in radiation epidemiology is thus to be able to account for dose uncertainty in risk estimation. A preliminary important step can be to identify the most influential input parameters implied in dose estimation, before modelling and accounting for their related uncertainty in radiation-induced health risks estimates. In this work, a variance-based global sensitivity analysis was performed to rank by influence the uncertain input parameters of the NCICT software implied in brain and red bone marrow doses estimation, for four classes of CT examinations. Two recent sensitivity indices, especially adapted to the case of dependent input parameters, were estimated, namely: the Shapley effects and the Proportional Marginal Effects (PME). This provides a first comparison of the respective behavior and usefulness of these two indices on a real medical application case. The conclusion is that Shapley effects and PME are intrinsically different, but complementary. Interestingly, we also observed that the proportional redistribution property of the PME allowed for a clearer importance hierarchy between the input parameters.

Keywords: Simulation, Shapley effects, Proportional marginal effects, Radiation dose, Epidemiology.

1. Introduction

In radiation epidemiology, one is commonly interested in the potential association between health risks and cumulative exposure to ionizing radiation (IR) (NRC, 2006; UNSCEAR, 2012). Particularly, concerns have been raised about possible cancer risks after exposure to computed tomography (CT) scans in childhood (UNSCEAR, 2013). In this specific context, individual exposure conditions to IR cannot be controlled experimentally: they are thus inherently uncertain. Additionally, the health effects of IR are associated with the absorbed dose to the organs of interest, rather than with radiation exposure. The absorbed dose does not only depend on the exposure to radioactive material but also on individual exposure conditions parameters. An absorbed dose is not directly measurable. It is calculated, for each CT scan, from numerical models, like the one proposed in the NCICT software (Lee et al., 2015). Given that a dosimetric model depends on input parameters which are most often uncertain (e.g. individual exposure conditions to IR), the calculation of absorbed doses is uncertain when estimating radiation-induced health risks after CT scans. However, when it is not or only poorly

accounted for, dose uncertainty can lead to biased risk estimates, a loss in statistical power and to a distortion of the dose-response relationship (Thomas et al., 1993; Kim et al., 2006; Physick et al., 2007). Therefore, a current methodological challenge in radiation epidemiology is to be able to account for dose uncertainty in risk estimation (Dauer, 2014). In this context, a preliminary important step can be to identify the most influential input parameters implied in dose estimation, before modelling and accounting for their related uncertainty in radiation-induced health risks estimates.

For that purpose, global sensitivity analysis (GSA) provides tools to quantify the influence of uncertain inputs of a numerical model (often assumed to be black-box) (Saltelli et al., 2008; Borgonovo and Plischke, 2016; Borgonovo and Rabitti, 2023). It is one of the key steps in uncertainty quantification of numerical models, especially in the context of scientific and industrial practices (De Rocquigny et al., 2008), and in particular in operation research and managerial problems (Borgonovo, 2017). Da Veiga et al. (2021) distinguish four major settings addressed by GSA: (i.) model exploration, i.e., investigating the input-output relationship; (ii.) factor fixing, i.e., identifying non-influential inputs; (iii.) factor prioritization, i.e., quantifying the most important inputs using quantitative importance measures; (iv.) robustness analysis, i.e., quantifying the sensitivity of the quantity of interest with respect to probabilistic model uncertainty of the input distributions. In the present work, the third setting is of interest (i.e., factor prioritization), given that our aim is to identify and rank the most influential input parameters of the NCICT software for organ dose estimation.

Among the large panel of GSA indices, the well-known Sobol' indices (Sobol, 1993) are derived from the functional analysis of variance (FANOVA) decomposition (Efron and Stein, 1981). This decomposition relies on the assumption of mutual independence between the inputs and attributes percentages of the model output variance to every possible subset of inputs. These indices sum to one, are non-negative, and can be interpreted as individual/interaction effects on the output. However, the mutual independence assumption can, in some cases, be unrealistic. In many applications, inputs have an inherent statistical dependence structure, either imposed in their probabilistic modeling or induced by physical constraints upon the input or the output space. This is particularly the case for some of the input parameters of the NCICT software. When the inputs are dependent, the Sobol' indices lose their intrinsic interpretation as individual/interaction effects, (see, e.g., Da Veiga et al. (2021) for an overview on the different works dealing with this subject).

Among the different approaches proposed to circumvent this issue, the Shapley effects have been shown to provide synthetic and relevant information about the part of the model output variance that is due to each input in many practical cases (see, e.g., Iooss and Prieur (2019); Radaideh et al. (2019)), and especially in epidemiological modeling (see, e.g., Da Veiga et al. (2021); Il Idrissi et al. (2021); Davila-Pena et al. (2022)). Based on the Shapley value (Shapley, 1953) and inspired from cooperative game theory (Osborne and Rubinstein, 1994), the Shapley effects have been introduced by Owen (2014) in GSA. The underlying idea is to consider the inputs as players of a cooperative game, to which the variance of the model output must be redistributed. This method attributes non-negative shares of variance to every input, and they always sum to one, despite the potential dependence structure. Hence, their interpretation is always guaranteed. These indices and their estimation methods have been largely studied in the GSA literature (Owen and Prieur, 2017; Benoumechiara and Elie-Dit-Cosaque, 2019; Plischke et al., 2021; Rabitti and Borgonovo, 2019; Song et al., 2016; Broto et al., 2020).

However, for certain purposes, the Shapley effects can be criticized for one of its side effects: they may attribute a non-zero share of the output variance to an exogenous input (i.e., an input that does not appear in the deterministic model) that is correlated with an influential one (Iooss and Prieur, 2019). This phenomenon, which is synonym to the violation of the so-called "exclusion property" of an importance measure (Grömping, 2007; Iooss et al., 2022; Clouvel et al., 2023), is sometimes called the Shapley's joke (Iooss et al., 2022) or the correlation distortion (Verdinelli and Wasserman, 2023). In order to prevent this phenomenon, Herin et al. (2022) have recently defined sensitivity indices using another allocation system, namely the proportional values (Ortmann, 2000; Feldman, 2005). In the context of variance-based GSA, it leads to the definition of novel indices called the proportional marginal effects (PME). Like the Shapley effects, they always remain interpretable even with a potential

dependence structure between input parameters, but they also allow to detect exogenous inputs by granting them zero allocation, despite their eventual correlation with non-exogenous inputs.

Although Shapley effects and PME are promising variance-based GSA indices for forthcoming applications in many research areas, they have not yet been widely used in health studies and have not been used together to highlight their potential complementary. Thus, as pointed out by [Lu and Borgonovo \(2023\)](#), in the particular context of pandemic models like the susceptible-infectious-recovered (SIR) models, sensitivity analysis and uncertainty quantification are rarely performed. Moreover, the most widely employed methods are one-at-a-time sensitivity analysis omitting the potential interactions between input parameters. As an example, [Wang et al. \(2018\)](#) focused on Sobol' indices to evaluate the relative importance of multiple input parameters when developing a mathematical model to replace invasive and time-consuming biological measures in the management of patients with chronic liver diseases. Likewise, [Rapadamnaba et al. \(2021\)](#) evaluated a cardiovascular model of patient-specific arterial network. [Roder et al. \(2021\)](#) highlighted the usefulness of the Shapley values for assessing the relative importance of the input features of a cohort of patients in the context of a machine learning (ML) algorithm trained to predict the result of a molecular diagnostic test at the sample or patient level. In the same way, [Smith and Alvarez \(2021\)](#) used Shapley values to interpret ML models and identify mortality factors for COVID-19.

In this work, a variance-based GSA is performed with both Shapley effects and PME and, for the first time, in radiation dosimetry, to rank by influence the input parameters of the NCICT software classically used to estimate the organ doses arising from CT scan exposure. Their respective behavior and usefulness are highlighted through this medical application.

The structure of the paper is as follows. Section 2 describes the case-study. Section 3 briefly presents Shapley effects and PME for variance-based GSA and their practical implementation. These two indices are first compared in Section 4 in the context of a use-case example based on a COVID-19 SIR model. In Section 5, they are applied to the CT organ dose estimation model. Finally, our results are discussed in Section 6.

2. Case study: CT scan organ dose estimation from the NCICT software

To estimate the organ doses associated to a CT scan, the NCICT computer program ([Lee et al., 2015](#)) is classically used ([Lee et al., 2019](#); [Thierry-Chef et al., 2021](#); [Foucault et al., 2022](#)). NCICT uses a library of phantoms, developed by the University of Florida/National Cancer Institute and the International Commission on Radiological Protection (ICRP). These phantoms represent realistic human anatomy ([Menzel et al., 2009](#); [Bolch et al., 2020](#)). In this work, we focus on the version 1.0 of the NCICT software for which the organ dose estimation following CT scan is possible for 12 phantoms (females and males, six ages: newborn, 1, 5, 10, 15 years old and adult). The (deterministic) numerical model implemented in NCICT to estimate organ doses is defined by the following input parameters: age and gender of the patient, scanned body region (identified by the scan start and stop landmarks measured in cm from the top of the head), CT machine model and technical parameters used for each image acquisition including tube current-time product (mAs), tube potential (kVp), pitch and bowtie filter (16 cm - head or 32 cm - body). Head filter is systematically assigned to head scans whereas body filter is considered for the other types of examinations. Table 1 describes the eight input parameters of the NCICT dosimetric model that we consider in this work; the GSA problem is then of dimension $d = 8$.

In NCICT version 1.0, the absorbed dose (in mGy) related to an *organ* of interest and following a CT scan received by a patient with a given *age* and *gender* is defined by the following equation:

$$\begin{aligned} & D(\text{organ}, \text{age}, \text{gender}, \text{model}, \text{kVp}, \text{filter}, \text{start}, \text{end}, \text{mAs}, \text{pitch}) \\ &= \sum_{z=\text{start}}^{\text{end}} CTDI_{vol}(\text{model}, \text{kVp}, \text{filter}, \text{mAs}, \text{pitch}) \times DC(\text{organ}, \text{age}, \text{gender}, \text{kVp}, \text{filter}, z). \end{aligned} \quad (1)$$

where:

Input	Description	Type of variable	Range of values
Age	Age of the patient	Discrete	$\{0, \dots, 18\}$
Gender	Gender of the patient	Categorical	$\{F, M\}$
Start	Start of the scanned body area (in cm)	Discrete	$\{1, \dots, 165\}$
End	End of the scanned body area (in cm)	Discrete	$\{1, \dots, 165\}$
mAs	Tube current-time product	Discrete	$\{4, \dots, 505\}$
kVp	Tube potential	Discrete	$\{80, 100, 120, 140\}$
pitch	Pitch	Continuous	$[0.2, \dots, 1.75]$
Model	CT model	Categorical	$\{1, \dots, 12\}$

Table 1: Description of the input parameters of the NCICT (version 1.0) dosimetric model used for CT scan dose estimation.

- z is a 1 cm axial slice between *start* and *end* from the top of the head.
- $CTDI_{vol}(model, kVp, filter, mAs, pitch)$ is the CT Dose Index per unit volumetric, obtained for the particular scanner model studied and the technical parameters used for image acquisition. It is derived from the following equation:

$$CTDI_{vol}(model, kVp, filter, mAs, pitch) = \frac{nCTDI_w(model, kVp, filter)}{pitch} \times \frac{mAs}{100}, \quad (2)$$

where $nCTDI_w(model, kVp, filter)$ is the $CTDI_w$ normalised to 100 mAs and selected from the CTDI library (Lee et al., 2014).

- $DC(organ, age, gender, kVp, filter, z)$ is an organ dose coefficient for z , depending on patient characteristics and technical acquisition parameters. NCICT includes Monte Carlo simulations (MCNPX2.7) of the x-ray in a reference CT scanner (Siemens Sensation 16) to estimate organ doses coefficients (DC). In this work, DC were assumed to be known for each possible configuration of input parameters.

Note that, in this work, we only used a "restricted" version of the dosimetric model implemented in the NCICT software (version 1.0) (called "restricted" NCICT model hereafter). Indeed, the black-box Monte Carlo simulations model included in NCICT to calculate the organ doses coefficients DC was ignored since only a library of DC values was available. To perform a variance-based GSA from the NCICT dosimetric model, we used an input-output sample of PACS (Picture Archiving and Communication System) data, available for some French university hospitals and some pediatric patients. PACS records and archives all images and machine settings of CT examinations. For each CT image recorded in PACS, information on the patient (gender, date of birth) and on the examination (scan date, scanned body region, CT machine model and machine settings) were collected.

3. Variance-based GSA with dependent inputs: Shapley effects and PME

This section presents the formal framework of variance-based GSA, with a special focus on the Shapley effects and the PME. Let $\mathbf{X} = (X_1, \dots, X_d)$ be a random vector, where each $X_i, i \in D := \{1, \dots, d\}$ represents an uncertain input of a real-valued deterministic model, denoted f hereafter. Denote $\mathcal{P}(D)$ the *power-set* of D , i.e., the set of subsets of D . For any $A \in \mathcal{P}(D)$, let $X_A := (X_i)_{i \in A}$ denotes the subset of the inputs defined in \mathbf{X} and whose indices are in A . Moreover, the complementary of a subset $A \in \mathcal{P}(D)$ in D is denoted $-A := D \setminus A$. $|\cdot|$ denotes the number of elements in a subset. The real-valued output random variable of f is denoted $Y = f(X)$. Let $\mathbb{E}(\cdot)$ and $\mathbb{V}(\cdot)$ denote the expectation and variance operators, respectively. In the following, when a function is referred to as being non-negative (resp. positive), it entails that it is valued in $[0, \infty)$ (resp. $(0, \infty)$).

3.1. Hoeffding's functional ANOVA and the Sobol' indices

If the random vector of inputs \mathbf{X} is assumed to be composed of mutually independent random variables, and if $\mathbb{E}(Y^2)$ is assumed to be finite, one can write (Da Veiga et al., 2021):

$$\mathbb{V}(Y) = \sum_{A \in \mathcal{P}(D)} V_A,$$

where, $\forall A \in \mathcal{P}(D)$,

$$V_A = \sum_{B \in \mathcal{P}(A)} (-1)^{|A|-|B|} \mathbb{V}(\mathbb{E}(Y | X_B)).$$

This result is due to a unique additive orthogonal decomposition of f in the (Hilbert) space of square-integrable functions (Hoeffding, 1948; Efron and Stein, 1981). The (classical) Sobol' indices have then been defined, $\forall A \in \mathcal{P}(D)$ as (Sobol, 1993):

$$S_A := \frac{V_A}{\mathbb{V}(Y)}. \quad (3)$$

Related to this decomposition, other indices have also been proposed: the *total* Sobol' indices. They are defined, $\forall A \in \mathcal{P}(D)$, as:

$$S_A^T = \frac{\mathbb{E}[\mathbb{V}(Y|X_{-A})]}{\mathbb{V}(Y)} = \sum_{B \in \mathcal{P}(A)} S_B. \quad (4)$$

Whenever the inputs are mutually independent, the Sobol' indices of each input quantify their individual influence, and for each subset of several inputs, their related Sobol' index quantifies their interaction due to the model f . The total Sobol' indices of a subset of inputs can thus be interpreted as the sum of individual/interaction influences (i.e., the Sobol' indices) of every subset of this subset. Figure 1 illustrates the variance decomposition in the case of three mutually independent inputs. The overall area of this Venn diagram represents $\mathbb{V}(Y)$, each colored areas represent the Sobol' indices, and each colored circle represents the total Sobol' indices of each input.

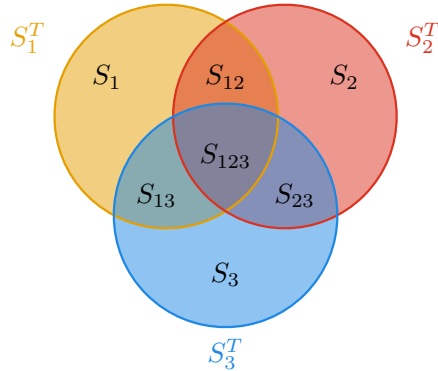


Figure 1: Illustration of the classical and total Sobol' indices of three mutually independent inputs.

It is important to note that, even if the Sobol' indices in Eq. (3) and total Sobol' indices in Eq. (4) remain well-defined (i.e., finite) as long as Y has a finite variance, their interpretation changes whenever the input mutual independence is no longer assumed. As stated in Da Veiga et al. (2021), whenever the inputs are correlated, the Sobol' indices as defined in Eq. (3) can become negative, and their interpretation as percentages of variance (and hence as influence) can be challenged.

3.2. Allocations and random order models

Cooperative (or coalitional) game theory is a field coming from economics, which primarily deals with the redistribution of wealth (Osborne and Rubinstein, 1994). Formally, the game is composed of a set $D = \{1, \dots, d\}$ whose elements represent players, and a user-chosen value function $v : \mathcal{P}(D) \rightarrow \mathbb{R}$, whose purpose is to quantify the value of a coalition (i.e., subset) of players $A \in \mathcal{P}(D)$. The total quantity to be redistributed among all players is the value of the *grand coalition*: $v(D)$.

To that extent, *allocations* (or solution concepts) have been proposed, resulting in a redistribution of $v(D)$, where each player $i \in D$ receives a share ϕ_i . The main way different allocations can be compared is through their properties (i.e., axioms). One famous example of allocation is the Shapley values (Shapley, 1953). They can be defined, $\forall i \in D$, as:

$$\text{Shap}_i = \sum_{A \in \mathcal{P}(D); i \in A} \frac{\sum_{B \in \mathcal{P}(A)} (-1)^{|A|-|B|} v(B)}{|A|} \quad (5)$$

$$= \frac{1}{d!} \sum_{\pi \in S_D} [v(C_{\pi(i)}(\pi)) - v(C_{\pi(i)-1}(\pi))] \quad (6)$$

where S_D is the set of all permutations of D , and for a particular permutation $\pi = (\pi_1, \dots, \pi_d) \in S_D$, $\pi(i) = \pi_i^{-1}$ denotes the position of the player i in π (i.e., $\pi_{\pi(i)} = i$), and finally $C_i(\pi)$ denotes the set of the i -th first inputs in the ordering π such as $C_i(\pi) = \{\pi_j : j \leq i\}$ with the convention that $C_0(\pi) = \emptyset$. Eq. (5) is due to Harsanyi (1963), whereas Eq. (6) is an equivalent expression of the Shapley values as a random order model allocation (Weber, 1988).

Random order model allocations are a set of allocations that can be written generally as:

$$\phi_i = \sum_{\pi \in S_D} p(\pi) [v(C_{\pi(i)}(\pi)) - v(C_{\pi(i)-1}(\pi))] \quad (7)$$

where p is a probability mass function over the orderings of D . In this framework, the Shapley values can be understood as a (discrete) uniform choice for p . Two remarkable properties arise from random order model allocations (whatever the choice of p is) (Weber, 1988):

- They are *efficient*: $\sum_{i=1}^d \phi_i = v(D)$;
- If v is chosen to be monotonic (i.e., if $B \subseteq A \in \mathcal{P}(D)$ then $v(B) \leq v(A)$), then they are *non-negative*: $\phi_i \geq 0$.

Different choices of probability mass function p lead to different allocations. In particular, the *proportional values* (Ortmann, 2000) result from the choice:

$$p(\pi) = \frac{L(\pi)}{\sum_{\sigma \in S_D} L(\sigma)}, \quad \text{where} \quad L(\pi) = \left(\prod_{j \in D} v(C_j(\pi)) \right)^{-1}.$$

Cooperative games can be endowed with a dual (Feldman, 2005, 2007). Instead of focusing on the value brought in by a coalition, the dual formulation instead defines a cooperative game based on their *worth*. It implies defining the function, $\forall A \in \mathcal{P}(D)$, as:

$$w(A) = v(D) - v(-A),$$

and computing the allocations by substituting the value function v by w . In the context of random order models, as pointed out in Grömping (2007) and Herin et al. (2022), this different point of view can be interpreted as quantifying the sequential costs of removing players from coalitions (for the dual game) instead of quantifying the sequential gains of adding them (for the initial game). It is interesting to note that the Shapley values of a cooperative game are equivalent to the Shapley values of its dual (Funaki, 1996). However, this behavior is not respected for the proportional values (Feldman, 2007).

3.3. Variance-based GSA indices inspired by allocations

By analogy between players in a cooperative game and inputs of a deterministic numerical model, [Owen \(2014\)](#) proposed the Shapley effects as measures of influence whenever the inputs are correlated. These indices are none other than the Shapley values of the cooperative game defined with the value function:

$$v(A) = \frac{\mathbb{V}(\mathbb{E}(Y | X_A))}{\mathbb{V}(Y)}.$$

The Shapley effects can thus be written, coming from Eq. (5), $\forall i \in D$, as:

$$\begin{aligned} \text{Sh}_i &= \sum_{A \in \mathcal{P}(D); i \in A} \frac{\sum_{B \in \mathcal{P}(A)} (-1)^{|A|-|B|} \mathbb{V}(\mathbb{E}(Y | X_B))}{\mathbb{V}(Y) |A|} \\ &= \sum_{A \in \mathcal{P}(D); i \in A} \frac{S_A}{|A|}, \end{aligned} \quad (8)$$

where S_A are the Sobol' indices as defined in Eq (3), but potentially computed with dependent inputs. These indices have been extensively studied both empirically and theoretically in the literature ([Owen and Prieur, 2017](#); [Benoumechiara and Elie-Dit-Cosaque, 2019](#); [Plischke et al., 2021](#); [Song et al., 2016](#); [Broto et al., 2020](#); [Iooss and Prieur, 2019](#); [Il Idrissi et al., 2021](#)). One can notice that the dual of this game leads, $\forall A \in \mathcal{P}(D)$, to:

$$w(A) = S_A^T,$$

and, since the Shapley values of a game are equal to the Shapley values of its dual, it leads to the same indices. This fact has also been noticed by [Song et al. \(2016\)](#) in the field of sensitivity analysis. Hence, another equivalent rewriting of the Shapley effects, for any $i \in D$, is:

$$\text{Sh}_i = \sum_{A \in \mathcal{P}(D); i \in A} \frac{\sum_{B \in \mathcal{P}(A)} (-1)^{|A|-|B|} S_B^T}{|A|}.$$

The Shapley effects have two remarkable properties, making them particularly attractive for influence quantification with dependent inputs:

- They sum to 1;
- They are always non-negative.

Hence, they can be interpreted as percentages of variance attributed to each input.

However, the Shapley effects suffer from one main drawback: if exogenous inputs (i.e., not in the deterministic model) are sufficiently correlated with endogenous inputs, their share of influence can be non-zero. This phenomenon is better known as ‘‘Shapley’s joke’’ ([Iooss et al., 2022](#); [Herin et al., 2022](#)) (or ‘‘violation of the exclusion property’’ ([Grömping, 2007](#); [Iooss et al., 2022](#); [Clouvel et al., 2023](#)) or ‘‘correlation distorsion’’ ([Verdinelli and Wasserman, 2023](#))), and can be counter-productive for factor-fixing. Therefore, [Herin et al. \(2022\)](#) proposed to adapt the proportional values to the variance-based GSA paradigm, via the definition of the proportional marginal effects (PME) which are none other than the proportional effects of the dual. These indices also sum to 1 and are always non-negative, but they bear an additional property: if, for a particular $A \in \mathcal{P}(D)$, X_A is the largest subset of exogenous inputs (in the sense that for any $B \in \mathcal{P}(D)$ such that $A \subsetneq B$ contains endogenous inputs), then:

$$\text{PME}_i = 0, \forall i \in A.$$

Hence, if used in conjunction with the Shapley effects, the PME allow to not fall under the Shapley’s joke, and hence strengthen the confidence in the resulting influence ranking. The PME differ from the Shapley effects, in the sense that the redistribution is not based on the same principles. From Eq. (8),

one can see that the Shapley effects provide an egalitarian redistribution of the Sobol’ indices towards the involved subsets of inputs. The PME provide a proportional redistribution of the Sobol’ indices: the more a player is worth in every coalition, the more wealth it receives (Ortmann, 2000; Feldman, 2007; Grömping, 2007). This behavior is particularly obvious when dealing with two inputs, as pointed out in Grömping (2007); Herin et al. (2022).

3.4. Estimation procedure, software and reproducibility

As presented in Broto et al. (2020), a plug-in estimator of both Shapley effects and PME can be built using estimators of the total Sobol’ indices S_A^T , for any $A \in \mathcal{P}(D)$. Many estimation procedures have been proposed in the literature (e.g., based on Monte-Carlo sampling-based estimation (Song et al., 2016)). However, in our case study (see section 2), the input distributions are not known: only a single i.i.d input-output sample of PACS data is available. We therefore focus on ‘given-data’ estimators, that do not require additional simulation. More specifically, the method proposed by Broto et al. (2020) is used, which allows for consistent estimators of the total Sobol’ indices using a nearest-neighbor procedure (see also Idrissi et al. (2021) for an overview of the method).

The following results have been gathered using the `sensitivity` R package, and in particular the `shapleysobol_knn` and `pme_knn` to estimate the Shapley effects and the PME respectively. This implementation allows categorical inputs, which are one-hot-encoded and normalized in order for the Euclidean distance to be sensible in the computation of the nearest-neighbors. To alleviate the computational burden of the nearest-neighbors procedure with many observations, they are computed using the approximation scheme proposed by Arya et al. (1998).

Results and figures presented in the COVID-19 application can be reproduced with the codes available in a GitLab repository¹.

4. Comparison between PME and Shapley effects on a COVID-19 epidemic model

The year 2020 raised important questions about the usefulness of epidemic modeling, especially in terms of producing relevant insights for public policy decision-makers, in light of the COVID-19 pandemic. Saltelli et al. (2020) have used this example to emphasize the essential need for GSA in such models, which aim to predict the potential consequences of intervention policies. Moreover, Lu and Borgonovo (2023) highlighted that sensitivity analysis and uncertainty quantification were rarely performed in this context and that input interactions were often omitted. In the context of COVID-19 in Italy, Borgonovo and Lu (2020) proposed a first study to evaluate the sensitivity of key epidemiological model outputs, such as the number of individuals quarantined, recovered, or deceased due to COVID-19. Additionally, another GSA was conducted in the French context of the initial COVID-19 outbreak by Da Veiga et al. (2021). By using data coming from this last analysis, Da Veiga et al. (2021) demonstrated how Shapley effects could be used to characterize the influence of uncertain input parameters on some outputs of this epidemic model. Using the same data, we highlight the differences between the PME and Shapley effects in this use-case example.

The deterministic compartmental model has been developed and described in Da Veiga et al. (2021) to represent the COVID-19 French epidemic (from March to May) by taking into account the asymptomatic individuals, the testing strategies, the hospitalized individuals and people admitted to Intensive Care Unit (ICU). Using several assumptions, it is based on a system of 10 ordinary differential equations. Each equation models path of individuals between different compartments (corresponding to their infectious and illness states). These equations involve 20 continuous input parameters X assumed to be independent between each other and model the dynamic between the different compartments. In Da Veiga et al. (2021), after a first screening step which allows for suppressing non-influential inputs,

¹See <https://gitlab.com/milidris/shapley-effects-and-pme-for-ct-scans>

the model is calibrated on real data by using a Bayesian calibration technique. After the analysis of this step, the selected remaining inputs are:

$$X_{sel} = (p_a, N_a, N_s, N_{IH}, brn, t_0, M_u, N, Im_0)^T$$

Their joint probability distribution is approximated from a posterior sample derived from the Bayesian calibration process and the non-influential inputs are fixed to their nominal values. Table 2 presents the 9 selected input parameters. For the present study, we considered three output variables of interest: (i) the maximum value of U, with U the number of hospitalized patients in ICU; (ii) the total reported cases; (iii) the cumulative time where the maximum value of U is reached.

Input	Description
p_a	Conditioned on being infected, the probability of having mild symptoms or non symptoms
N_a	If asymptomatic, number of days until recovery
N_s	If symptomatic, number of days until recovery without hospitalization
N_{IH}	If severe symptomatic, number of days until hospitalization
brn	Basic reproducing number
t_0	Starting date of epidemics (in 2020)
M_u	Decaying rate for transmission (after social distancing and lockdown)
N	Date of effect of social distanciation and lockdown
Im_0	Number of infected undetected at the start of epidemic

Table 2: Description of the uncertain input parameters of the COVID-19 epidemic model.

Figure 2 displays estimated (Pearson’s) the linear correlation coefficients between the input parameters selected after calibration. One can notice that some of these parameters can display strong correlations, and thus mutual independence is not satisfied. It comforts the choice of Shapley effects and PME in order to assess their influence.

Shapley effects and PME have been computed from the methodology presented in Section 3.4. The dataset consists in 5000 rows, and thus, the approximated nearest-neighbor search algorithm has been used with a number of neighbors set fixed at 3. The intervals around the estimated values are the empirical 2.5% and 97.5% quantiles, which have been computed by means of 100 repetitions, where, for each repetition, the indices have been estimated on a random selection of 80% of the initial data.

We observed that N_a and p_a were the most influential parameters of the COVID-19 epidemic model of interest. Shapley effects and PME estimated for the maximum value of U and the time where the maximum value of U is reached were similar (Table 4). However, according to Shapley effects, p_a explained 30% of the total reported cases variance whereas this parameter was granted more than 80% of the variance share by PME, others parameters becoming non-influential (Figure 3). p_a was highly correlated with t_0 , N and Im_0 whereas N_a was only moderately correlated with N_s and M_u . For the total reported cases output, PME allowed for a better redistribution of p_a interaction effects, proportionally to his marginal contribution and independently of his correlation structure.

5. Application to CT scan dose estimation from the "restricted" NCICT model

Figure 4 displays the estimated (Pearson’s) linear correlation coefficients between the 8 input parameters of the "restricted" NCICT model used for CT scan dose estimation (see Table 1). We observed relatively high correlation coefficients between scan start and scan end ($\hat{\rho} = 0.79$), between pitch and scan start ($\hat{\rho} = 0.43$), between pitch and scan end ($\hat{\rho} = 0.47$) or between pitch and kVp ($\hat{\rho} = -0.37$). These four parameters, kVp, pitch, scan start and end are those with the higher values of variance inflation factor (VIF) (Table 4) which is a metric of multicollinearity (see, e.g. Clouvel et al. (2023)). However, the two qualitative input parameters, gender and CT model, were not correlated with the quantitative variables as depicted by the correlation ratio in Table 5. This correlation structure does not allow for interpretable Sobol’ indices, which motivates the use of Shapley effects and PME.

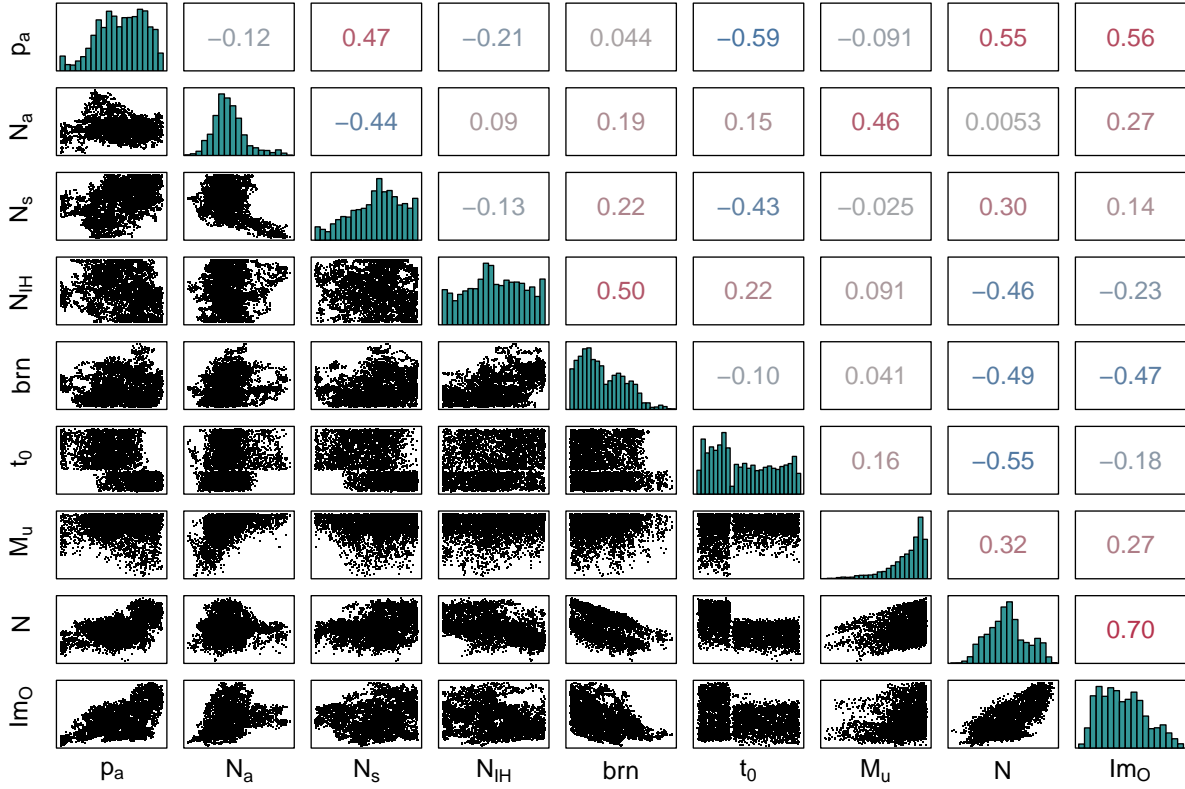


Figure 2: Scatter-plots and estimated (Pearson’s) linear correlation coefficients of the input parameters of the COVID-19 epidemic model, derived from a posterior sample.

Shapley effects and PME have been computed from the methodology presented in Section 3.4. The dataset consists in 8848 rows and the approximated nearest-neighbor search algorithm has been used with an arbitrary number of neighbors set at $N=100$. The effects were forced to sum to one because of the deterministic nature of the model (i.e., there is not a noisy coefficient). The intervals around the estimated values are the empirical 5% and 95% percentiles, which have been computed by means of 200 repetitions, where, for each repetition, the indices have been estimated on a random selection of 90% of the initial data, and subsequently corrected for the bias due to this sampling procedure. Figures 5, 6, 7 and 8 display the Shapley effects and PME estimates for head (Number of examinations=4681), chest ($N=2314$), abdopelvis ($N=823$) and multiple areas ($N=1025$) CT scan examinations respectively. The dotted line represents the average influence of an input in the case of similar importance (i.e. $1/8 \approx 12.5\%$). Shapley and PME hierarchies are presented in Table 6. The PME did not detect exogenous input since all allocations were strictly positive. It is reassuring since every input is effectively involved in the estimation of the organ dose.

Head examinations: Figure 5 displays Shapley effects and PME for head examinations. On the one hand, the brain dose was mainly explained by mAs, kVp and scan end. Shapley effects and PME depicted similar values for mAs and kVp with around 27% and 24% of the brain dose variance respectively for these 2 parameters which are related to the quantity of delivered X-rays (Table 6). However, scan end influence was lower with PME compared to Shapley effects, probably because of its correlation with other input parameters such as scan start ($\hat{\rho} = 0.79$) and pitch ($\hat{\rho} = 0.47$). On the other hand, for RBM dose, all input parameters were close to the average level, although five parameters seemed to be a bit more influential: mAs, kVp, scan start, scan end and age. It was not surprising that age intervened here since RBM distribution varies across the body depending on age,

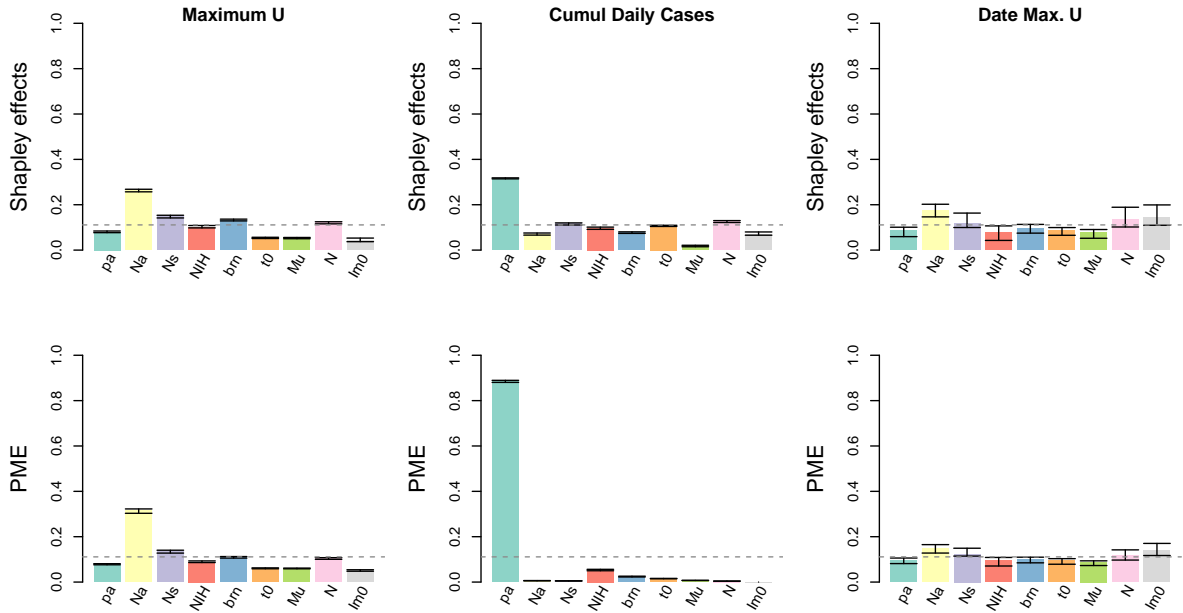


Figure 3: Shapley effects and PME of 9 input parameters for three outputs of the epidemic COVID-19 model: the maximum value of U, the total reported cases and the time where the maximum value of U is reached

being less and less in the head as children grow up.

Chest examinations: According to both estimated Shapley effects and PME displayed in Figure 6, mAs, pitch and kVp were the most influential input parameters of brain dose delivered during chest examinations. However, the PME allocated a lower share of the output variance to kVp than Shapley effects (Sh=19%, PME=14%) and a higher share to pitch (Sh=18%, PME=20%) (Table 6). This could be explained by the high level of multicollinearity of these two input parameters with the other ones ($VIF = 1.47$ for kVp and 1.69 for pitch). Likewise, pitch is linearly correlated with scan start and end ($\hat{\rho} = 0.43$ and 0.47). For RBM dose, mAs and pitch were the two influential parameters according to both sensitivity indices. In this case, the marginal contributions of these two parameters seem to be highly discriminated as the proportional redistribution of the interaction effects did not impact importance values compared to the Shapley effects.

Abdopelvis examinations: Regarding the brain dose, kVp appeared to be the only input parameter with a significant influence, that is to say greater than the average level of influence of one input (Figure 7). However, its effect was uncertain, especially for PME. This uncertainty could be explained by the negligible brain dose delivered by abdopelvis CT examinations. Likewise, kVp was the most influential input parameter of RBM dose, explaining about half of the RBM dose variance (Table 6). Furthermore, for brain dose, mAs was the second parameter in the Shapley hierarchy and the fifth in the PME hierarchy and for RBM dose, mAs was the third one in the Shapley hierarchy and the last one in the PME hierarchy. This parameter was not correlated with any other input but it interacts with other technical parameters such as kVp and pitch to define the quantity of delivered X-rays. Thus PME allowed for a better redistribution of their interaction on dose estimates, proportionally to their marginal contributions (Table 6).

Multiple areas examinations: Scan start was the most influential input parameter of doses estimates associated with multiple areas examinations (Figure 8). It was granted half of the brain dose variance and 41% of the RBM dose variance (Table 6). This result could be explained by the heterogeneity of the considered examinations and scanned body regions included in this class. We observed some differences between Shapley effects and PME. For instance, according to Shapley effects,

Influence rank	Shapley effects		PME	
	Maximum U			
1	N_a	26.68%	N_a	31.43%
2	N_s	14.98%	N_s	13.50%
3	brn	13.17%	brn	10.87%
4	N	12.01%	N	10.36%
5	N_{IH}	10.06%	N_{IH}	8.87%
6	p_a	8.02%	p_a	7.76%
7	t_0	5.45%	t_0	6.13%
8	M_u	5.41%	M_u	6.10%
9	Im_O	4.21%	Im_O	4.97%
	Cumul Daily Cases			
1	P_a	31.68%	P_a	88.35%
2	N	12.75%	N_{IH}	4.91%
3	N_s	11.68%	brn	2.61%
4	t_0	10.66%	t_0	1.70%
5	N_{IH}	9.75%	M_u	0.83%
6	brn	7.76%	N_a	0.61%
7	N_a	6.97%	N_s	0.53%
8	Im_O	6.76%	N	0.46%
9	M_u	1.98%	Im_O	0.00005%
	Date Max. U			
1	N_a	17.55%	N_a	14.78%
2	Im_O	14.32%	Im_O	13.86%
3	N	13.62%	N_s	12.35%
4	N_s	11.83%	N	11.83%
5	brs	9.65%	brs	10.05%
6	p_a	8.81%	p_a	9.52%
7	t_0	8.62%	N_{IH}	9.39%
8	N_{IH}	7.89%	t_0	9.38%
9	M_u	7.71%	M_u	8.85%

Table 3: Influence hierarchies between the inputs of the COVID-19 epidemic model according to Shapley effects and PME.

	Age	Gender	Model	mAs	kVp	pitch	Start	End
VIF	1.46	1.01	1.43	1.14	1.47	1.69	2.80	3.25

Table 4: Variance inflation factor for the input parameters of the restricted NCICT model.

	Age	mAs	kVp	pitch	Start	End
Gender	0.002	0.001	0.0002	0.002	0.009	0.005
Model	0.02	0.07	0.03	0.05	0.05	0.07

Table 5: Correlation ratio between the quantitative input parameters and the two qualitative variables "Gender" and CT "Model" of the restricted NCICT model.

pitch explained 14% of the brain dose variance and mAs explained 17% of the RBM dose variance but these two parameters were allocated a lower influence by PME (Table 6). Scan start was correlated with scan end and pitch. Compared to Shapley effects, PME was less influenced by inputs correlation and allocated a share of interaction effects to scan start proportionally to his marginal effect. This trend was also observed for the total reported cases of COVID-19 (Section 4). Finally, with Shapley effects, gender was granted a negative share of the doses variances which is due to the approximation

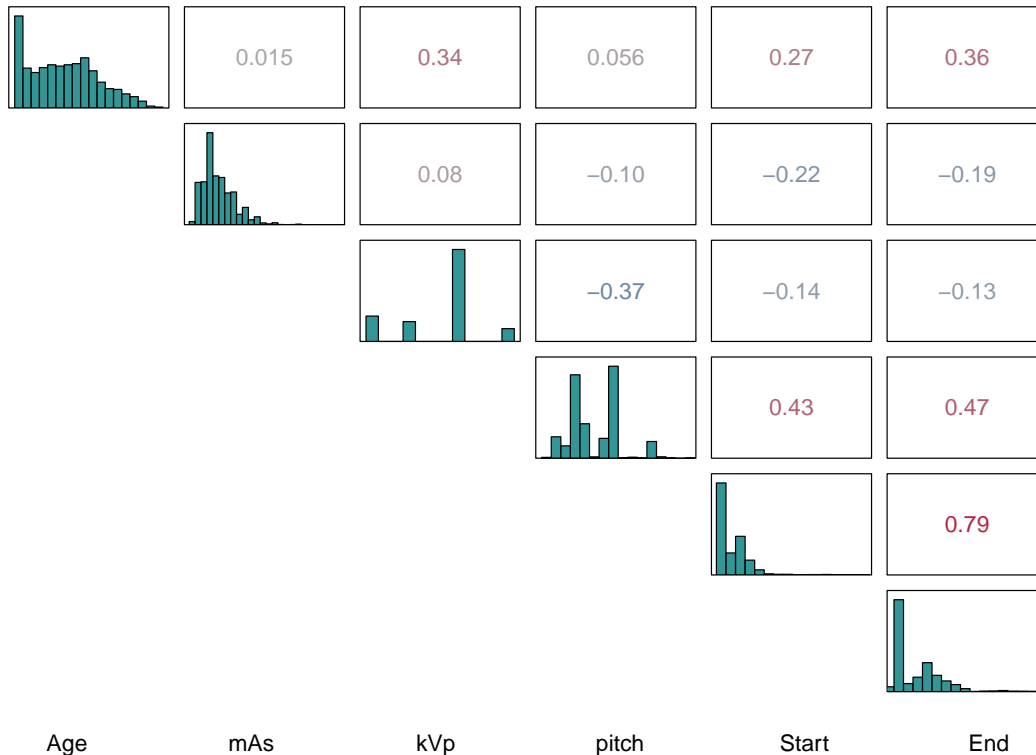


Figure 4: Pairwise plots of the quantitative inputs of the restricted NCICT model including the histogram of the empirical distribution of each input (diagonal) and the estimated (Pearson’s) linear correlation coefficients (upper part).

error of the nearest-neighbors procedure.

6. Discussion and conclusion

This paper provides a first comparison on a real medical application case, based on CT scan organ dose estimation, of the two recent variance-based GSA indices especially adapted to the dependent input parameters context: the Shapley effects (Owen, 2014) and the Proportional Marginal Effects (PME) (Herin et al., 2022). Shapley effects were first defined to allocate a share of the output variance of the model to each input parameter, in the context of dependent inputs. Then, PME have been recently proposed to detect exogenous inputs. While Shapley allocation is egalitarian, the PME allocation tends to favor each input proportionally to its marginal contribution.

The aim of our case study in radiation dosimetry was to rank by influence the input parameters of the restricted NCICT model classically used to estimate the organ doses arising from CT scan exposure. A GSA, based on the estimation of both Shapley effects and PME, allowed us to identify the most influential input parameters implied in brain and RBM doses estimation. Analyses were performed for four classes of examinations classified according to the scanned body region: head, chest, abdopelvis and multiple areas examinations. Among the eight uncertain input parameters implied in dose estimation, different influential parameters were highlighted depending on the studied scan type. For head examinations, mAs, kVp and the end of the scanned body contributed to about 70% of the variance of the brain dose estimate while RBM dose was influenced by mAs, kVp, start, end and age. Brain and RBM doses delivered during chest examinations were mainly influenced by mAs, pitch and

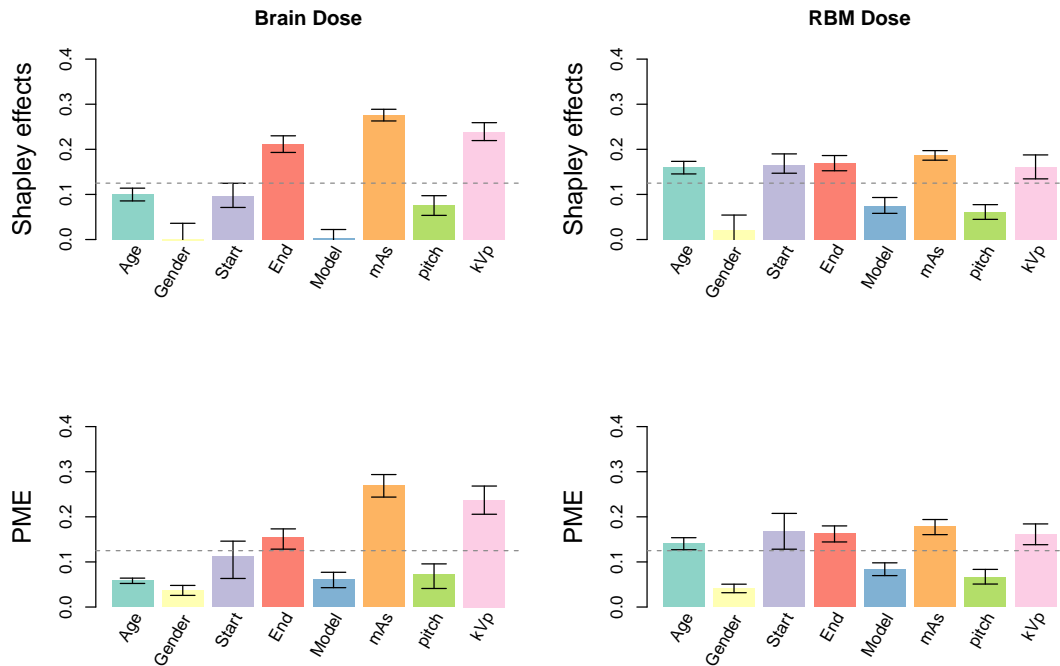


Figure 5: Estimated Shapley effects (top) and PME (bottom) for brain (left) and RBM (right) dose estimates associated with head examinations.

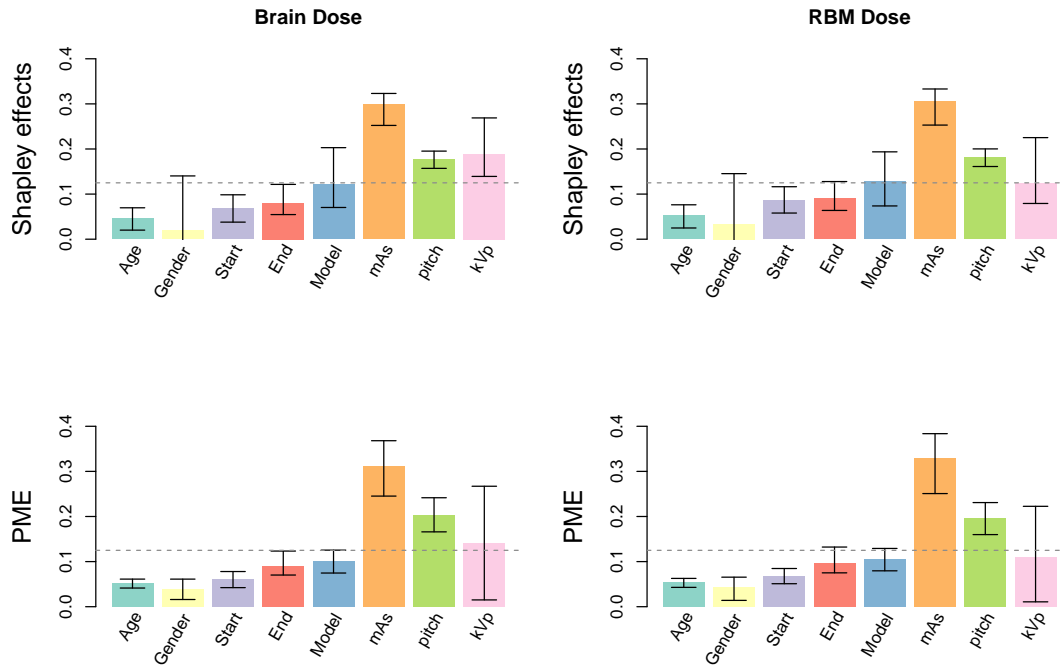


Figure 6: Estimated Shapley effects (top) and PME (bottom) for brain (left) and RBM (right) doses associated with chest examinations.

kVp. kVp was granted more than 30% of the variance of the organ doses associated to abdopelvis examinations. Finally, the start of the scanned body was the only influential input parameter of brain and RBM doses related to multiple areas examinations. Thus, we identified two classes of influential

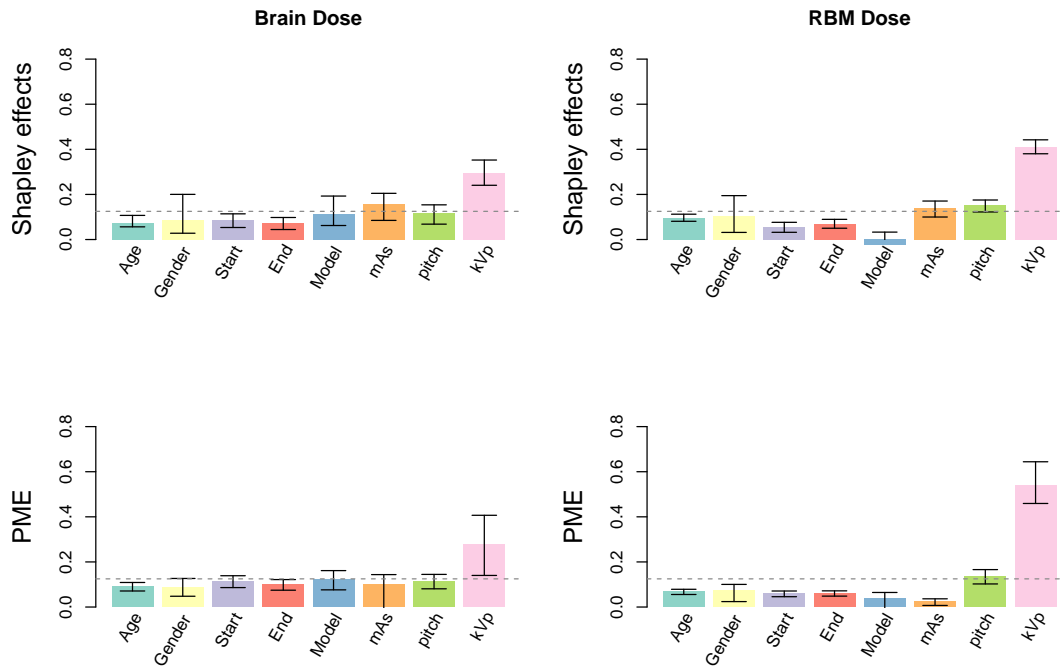


Figure 7: Estimated Shapley effects (top) and PME (bottom) for brain (left) and RBM (right) doses associated with abdopelvis examinations.

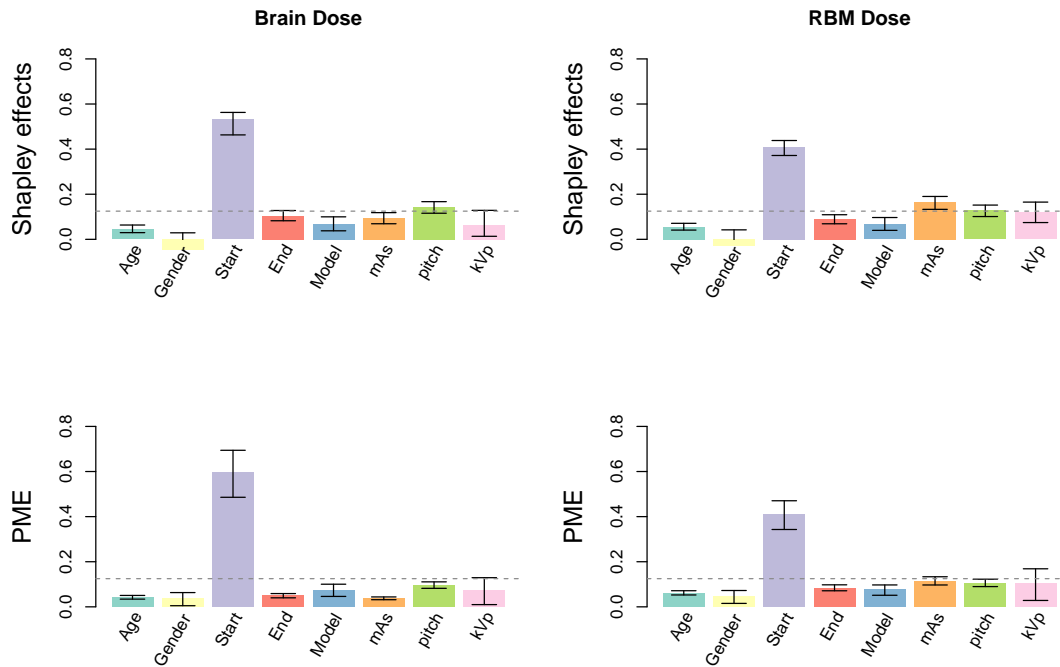


Figure 8: Estimated Shapley effects (top) and PME (bottom) for brain (left) and RBM (right) doses associated with multiple areas examinations.

parameters: (i) mAs, kVp and pitch, which represent the technical image acquisition parameters; (ii) the bounds of the scanned body region (scan start and end).

Additionally to the case study in radiation dosimetry that motivated this work, Shapley effects and

Influence rank	Brain dose				RBM dose			
	Shapley effects		PME		Shapley effects		PME	
Head examinations								
1	mAs	27.6%	mAs	27.0%	mAs	18.7%	mAs	17.8%
2	kVp	23.9%	kVp	23.7%	End	17.0%	Start	16.8%
3	End	21.2%	End	15.4%	Start	16.6%	End	16.3%
4	Age	10.1%	Start	11.2%	kVp	16.1%	kVp	16.0%
5	Start	9.6%	Pitch	7.2%	Age	16.0%	Age	14.1%
6	Pitch	7.5%	Model	6.1%	Model	7.5%	Model	8.3%
7	Model	0.3%	Age	5.8%	Pitch	6.1%	Pitch	6.6%
8	Gender	-0.2%	Gender	3.7%	Gender	2.1%	Gender	4.2%
Chest examinations								
1	mAs	29.9%	mAs	31.1%	mAs	30.6%	mAs	32.9%
2	kVp	18.9%	Pitch	20.4%	Pitch	18.1%	Pitch	19.5%
3	Pitch	17.7%	kVp	14.2%	Model	12.8%	kVp	11.0%
4	Model	12.2%	Model	10.2%	kVp	12.3%	Model	10.6%
5	End	8.0%	End	8.9%	End	9.0%	End	9.6%
6	Start	6.7%	Start	6.1%	Start	8.5%	Start	6.8%
7	Age	4.6%	Age	5.2%	Age	5.2%	Age	5.4%
8	Gender	2.0%	Gender	3.9%	Gender	3.4%	Gender	4.2%
Abdopelvis examinations								
1	kVp	29.4%	kVp	27.8%	kVp	41.0%	kVp	53.9%
2	mAs	15.9%	Model	12.1%	Pitch	15.1%	Pitch	13.7%
3	Pitch	11.6%	Start	11.3%	mAs	13.8%	Gender	7.3%
4	Model	11.2%	Pitch	11.2%	Gender	10.3%	Age	6.8%
5	Start	8.6%	mAs	10.1%	Age	9.7%	End	6.1%
6	Gender	8.5%	End	9.8%	End	7.0%	Start	6.0%
7	Age	7.5%	Age	9.0%	Start	5.5%	Model	3.7%
8	End	7.3%	Gender	8.8%	Model	-2.6%	mAs	2.6%
Multiple areas examinations								
1	Start	53.1%	Start	59.6%	Start	40.8%	Start	40.8%
2	Pitch	14.3%	Pitch	9.5%	mAs	16.5%	mAs	11.5%
3	End	10.4%	Model	7.3%	Pitch	12.8%	Pitch	10.6%
4	mAs	9.4%	kVp	7.3%	kVp	11.9%	kVp	10.6%
5	Model	6.8%	End	4.9%	End	8.9%	End	8.3%
6	kVp	6.5%	Age	4.1%	Model	6.5%	Model	7.6%
7	Age	4.4%	mAs	3.8%	Age	5.5%	Age	6.1%
8	Gender	-4.8%	Gender	3.6%	Gender	-3.0%	Gender	4.4%

Table 6: Influence hierarchies between the inputs of the restricted NCICT model according to Shapley effects and PME.

PME have been applied to a use-case example (a COVID-19 epidemic model) in this paper. The goal was to better understand the behavior and usefulness of these two GSA indices. The conclusion is that Shapley effects and PME are intrinsically different, but complementary. Shapley effects provide a tool for model exploration to identify the inputs that might have an impact on the output variance, even if it is due to correlation or interaction with other inputs. Initially, PME is rather focused on screening and factor fixing. In our case study in radiation dosimetry, all uncertain input parameters were endogenous and included in the NCICT equations. However, interestingly, we observed that the proportional redistribution property of the PME allowed for a clearer importance hierarchy: the PME are less sensitive to correlations and redistribute interaction effects proportionally to marginal effects. Note also that this paper focused on the total contribution of each input but it does not provide

information on the marginal contribution and the interactions between inputs. In a future work, the application of the Shapley-Owen indices (Rabitti and Borgonovo, 2019) may provide information about the interaction effects between inputs. Moreover, the present work focused on GSA relative to the variance of organ dose estimates. Inputs influence could also be studied from a different perspective and with other quantities of interest, such another statistical dispersion metrics or reliability-related quantities (e.g., a quantile), see Da Veiga et al. (2021) for an overview.

These two variance-based GSA indices, Shapley effects and PME, represent promising tools for forthcoming applications in epidemiology and, more generally, in operation research studies based on decision-support models. Indeed, mathematical models, which depend on many uncertain and dependent input parameters, are omnipresent in health studies, as in engineering, finance, management science, etc. (Borgonovo, 2017; Razavi et al., 2020). We have shown that, while Shapley effects allow to identify the most influential parameters, PME allow for a more pronounced hierarchy. Thus, the comparison of these two allocations offer the possibility to understand marginal and correlation effects of the uncertain input parameters in a large variety of application domains of GSA. Beyond GSA, these sensitivity indices are also promising in the context of interpretability of machine learning techniques (Lepore et al., 2022), as recently shown in Iooss et al. (2022). The Shapley effects and PME are fully complementary in this context, depending if the aim is to perform an efficient screening (with PME) or to measure the effect of each considered potential input (of the machine learning model) fully accounting for their correlation induced effects (with Shapley effects).

References

- S. Arya, D. M. Mount, N. S. Netanyahu, R. Silverman, and A. Y. Wu. An optimal algorithm for approximate nearest neighbor searching fixed dimensions. *J. ACM*, 45(6):891–923, nov 1998. ISSN 0004-5411. doi: 10.1145/293347.293348. URL <https://doi.org/10.1145/293347.293348>.
- N. Benoumechiara and K. Elie-Dit-Cosaque. Shapley effects for sensitivity analysis with dependent inputs: bootstrap and kriging-based algorithms. *ESAIM: Proceedings and Surveys*, 65:266–293, 2019.
- W. E. Bolch, K. Eckerman, A. Endo, J.G.S. Hunt, D. W. Jokisch, C. H. Kim, K. P. Kim, C. Lee, J. Li, N. Petoussi-Henss, T. Sato, , H. Schlattl, Y. S. Yeom, and M. Zankl. ICRP Publication 143: paediatric reference computational phantoms. *Annals of the ICRP*, 49(1):5–297, 2020.
- E. Borgonovo. *Sensitivity Analysis - An Introduction for the Management Scientist*. Springer, 2017.
- E. Borgonovo and X. Lu. Is time to intervention in the covid-19 outbreak really important? a global sensitivity analysis approach. *Preprint, arXiv:2005.01833*, 2020.
- E. Borgonovo and E. Plischke. Sensitivity analysis: A review of recent advances. *European Journal of Operational Research*, 248:869–887, 2016.
- E. Borgonovo and G. Rabitti. Screening: From tornado diagrams to effective dimensions. *European Journal of Operational Research*, 304(3):1200–1211, 2023.
- B. Broto, F. Bachoc, and M. Depecker. Variance reduction for estimation of Shapley effects and adaptation to unknown input distribution. *SIAM/ASA Journal on Uncertainty Quantification*, 8(2):693–716, 2020.
- L. Clouvel, B. Iooss, V. Chabridon, M. Il Idrissi, and F. Robin. Variance-based importance measures in the linear regression context: Review, new insights and applications. *Preprint, https://hal.science/hal-04102053v1*, 2023. URL <https://hal.science/hal-04102053v1>.
- S. Da Veiga, F. Gamboa, B. Iooss, and C. Prieur. *Basics and trends in sensitivity analysis: Theory and practice in R*. SIAM, 2021.

- L. T. Dauer. Uncertainties in the estimation of radiation risks and probability of disease causation, ncrp report no. 171., 2014.
- Laura Davila-Pena, Ignacio García-Jurado, and Balbina Casas-Méndez. Assessment of the influence of features on a classification problem: An application to covid-19 patients. *European Journal of Operational Research*, 299(2):631–641, 2022.
- E. De Rocquigny, N. Devictor, and S. Tarantola. *Uncertainty in Industrial Practice: A Guide to Quantitative Uncertainty Management*. Wiley, 2008.
- B. Efron and C. Stein. The jackknife estimate of variance. *The Annals of Statistics*, pages 586–596, 1981.
- B.E. Feldman. Relative importance and value. *SSRN Electron. J.*, page 2255827, 2005.
- B.E. Feldman. A theory of attribution. *SSRN 988860*, 2007.
- A. Foucault, S. Ancelet, S. Dreuil, S. Caër-Lorho, H. Ducou-Le-Pointe, H. Brisse, J. F. Chateil, C. Lee, K. Leuraud, and M. O. Bernier. Childhood cancer risks estimates following ct scans: an update of the french ct cohort study. *European Radiology*, pages 1–8, 2022.
- Y. Funaki. Dual axiomatizations of solutions of cooperative games, January 1996. URL <http://www.f.waseda.jp/funaki/pdf/dual.pdf>. preprint.
- U. Grömping. Estimators of relative importance in linear regression based on variance decomposition. *The American Statistician*, 61(2):139–147, 2007.
- J. C. Harsanyi. A Simplified Bargaining Model for the n-Person Cooperative Game. *International Economic Review*, 4(2):194–220, 1963. ISSN 0020-6598.
- M. Herin, M. Il Idrissi, V. Chabridon, and B. Iooss. Proportional marginal effects for global sensitivity analysis. *Preprint, arXiv:2210.13065*, 2022.
- W. Hoeffding. A class of statistics with asymptotically normal distribution. *Ann. Math. Statist.*, 19: 293–325, 1948.
- M. Il Idrissi, V. Chabridon, and B. Iooss. Developments and applications of Shapley effects to reliability-oriented sensitivity analysis with correlated inputs. *Environmental Modelling & Software*, 143:105115, 2021.
- B. Iooss and C. Prieur. Shapley effects for sensitivity analysis with correlated inputs: comparisons with Sobol’ indices, numerical estimation and applications. *International Journal for Uncertainty Quantification*, 9(5), 2019.
- B. Iooss, V. Chabridon, and V. Thouvenot. Variance-based importance measures for machine learning model interpretability. In *Actes du 23ème Congrès de Maîtrise des Risques et de Sécurité de Fonctionnement ($\lambda\mu 23$)*, Saclay, France, 2022.
- H. M. Kim, Y. Yasui, and I. Burstyn. Attenuation in risk estimates in logistic and cox proportional-hazards models due to group-based exposure assessment strategy. *The Annals of occupational hygiene*, 50(6):623–635, 2006.
- C. Lee, K.P. Kim, W.E. Bolch, B.E. Moroz, and L. Folio. NCICT: a computational solution to estimate organ doses for pediatric and adult patients undergoing CT scans. *Journal of Radiological Protection*, 35(4):891, 2015.
- C. Lee, N. Journy, B. E. Moroz, M. Little, R. Harbron K. McHugh, M. Pearce, and A. Berrington de Gonzalez. Organ dose estimation accounting for uncertainty for pediatric and young adult ct scans in the united kingdom. *Radiation Protection Dosimetry*, 184(1):44–53, 2019.

- E. Lee, S. Lamart, M. P. Little, and C. Lee. Database of normalised computed tomography dose index for retrospective ct dosimetry. *Journal of Radiological Protection*, 34(2):363, 2014.
- A. Lepore, B. Palumbo, and J-M. Poggi, editors. *Interpretability for Industry 4.0: Statistical and Machine Learning Approaches*. Springer, 2022.
- X. Lu and E. Borgonovo. Global sensitivity analysis in epidemiological modeling. *European Journal of Operational Research*, 304(1):9–24, 2023.
- H. G. Menzel, C. Clement, and P. DeLuca. Icrp publication 110. realistic reference phantoms: an icrp/icru joint effort. a report of adult reference computational phantoms. *Annals of the ICRP*, 39(2):1–164, 2009.
- NRC. Health risks from exposure to low levels of ionizing radiation: Beir vii phase 2. Technical report, National Research Council (NRC), Committee on the Biological Effects of Ionizing Radiations, National Academy Press, Washington DC, USA, 2006.
- K. M. Ortmann. The proportional value for positive cooperative games. *Mathematical Methods of Operations Research*, 51(2):235–248, 2000.
- Martin J Osborne and Ariel Rubinstein. *A course in game theory*. MIT press, 1994.
- A. B. Owen. Sobol’indices and Shapley value. *SIAM/ASA Journal on Uncertainty Quantification*, 2(1):245–251, 2014.
- A. B. Owen and C. Prieur. On Shapley value for measuring importance of dependent inputs. *SIAM/ASA Journal on Uncertainty Quantification*, 5(1):986–1002, 2017.
- W. L. Physick, M. E. Cope, S. Lee, and P. J. Hurley. An approach for estimating exposure to ambient concentrations. *Journal of Exposure Science & Environmental Epidemiology*, 17(1):76–83, 2007.
- E. Plischke, G. Rabitti, and E. Borgonovo. Computing Shapley effects for sensitivity analysis. *SIAM/ASA Journal on Uncertainty Quantification*, 9:1411–1437, 2021.
- G. Rabitti and E. Borgonovo. A Shapley–Owen index for interaction quantification. *SIAM/ASA Journal on Uncertainty Quantification*, 7:1060–1075, 2019.
- M.I. Radaideh, S. Surani, D. O’Grady, and T. Kozlowski. Shapley effect application for variance-based sensitivity analysis of the few-group cross-sections. *Annals of Nuclear Energy*, 129:264–279, 2019.
- R. Rapadamnaba, M. Ribatet, and B. Mohammadi. Global sensitivity analysis for assessing the parameters importance and setting a stopping criterion in a biomedical inverse problem. *International Journal for Numerical Methods in Biomedical Engineering*, 37(6):e3458, 2021.
- S. Razavi, A. Jakeman, A. Saltelli, C. Prieur, B. Iooss, E. Borgonovo, E. Plischke, S. Lo Piano, T. Iwanaga, W. Becker, S. Tarantola, J.H.A. Guillaume, J. Jakeman, H. Gupta, N. Melillo, G. Rabiti, V. Chabridon, Q. Duan, X. Sun, S. Smith, R. Sheikholeslami, N. Hosseini, M. Asadzadeh, A. Puy, S. Kucherenko, and H.R. Maier. The future of sensitivity analysis: An essential discipline for systems modelling and policy making. *Environmental Modelling and Software*, 137(104954), 2020.
- J. Roder, L. Maguire, R. Georgantas, and H. Roder. Explaining multivariate molecular diagnostic tests via Shapley values. *BMC Medical Informatics and Decision Making*, 21(1):1–18, 2021.
- A. Saltelli, M. Ratto, T. Andres, F. Campolongo, J. Cariboni, D. Gatelli, M. Saisana, and S. Tarantola. *Global sensitivity analysis: the primer*. John Wiley & Sons, 2008.

- A. Saltelli, G. Bammer, I. Bruno, E. Charters, M. Di Fiore, E. Didier, W. Nelson Espeland, J. Kay, Sa. Lo Piano, D. Mayo, R. Pielke Jr, T. Portaluri, T. M. Porter, A. Puy, I. Rafols, J. R. Ravetz, E. Reinert, D. Sarewitz, P. B. Stark, A. Stirling, J. van der Sluijs, and J. Vineis. Five ways to ensure that models serve society: a manifesto. *Nature*, 582(7813):482–484, 2020.
- L.S. Shapley. A value for n-persons game. In H.W. Kuhn and A.W. Tucker, editors, *Contributions to the theory of games II, Annals of mathematic studies*. Princeton University Press, Princeton, NJ, 1953.
- M. Smith and F. Alvarez. Identifying mortality factors from machine learning using shapley values—a case of covid19. *Expert Systems with Applications*, 176:114832, 2021.
- I. M. Sobol. Sensitivity analysis for non-linear mathematical models. *Mathematical modelling and computational experiment*, 1:407–414, 1993.
- E. Song, B. L. Nelson, and J. Staum. Shapley effects for global sensitivity analysis: Theory and computation. *SIAM/ASA Journal on Uncertainty Quantification*, 4(1):1060–1083, 2016.
- I. Thierry-Chef, G. Ferro, L. Le Cornet, J. Dabin ans T. S. Istad, A. Jahnen, C. Lee, C. Maccia, F. Malchair, H. M. Olerud, R. W. Harbron, J. Figuerola, J. Hermen, M. Moissonnier, M. O. Bernier, M. Bosch de Basea, G. Byrnes, E. Cardis, M. Hauptmann, N. Journy, A. Kesminiene, J. M. Meulepas, R. Pokora, and S. L. Simon. Dose estimation for the european epidemiological study on pediatric computed tomography (epi-ct). *Radiation Research*, 196(1):74–99, 2021.
- D. Thomas, D. Stram, and J. Dwyer. Exposure measurement error: influence on exposure-disease relationships and methods of correction. *Annual review of public health*, 14(1):69–93, 1993.
- UNSCEAR. Sources, effects and risks of ionizing radiation. unscar 2012 report with scientific annexes a and b. Technical report, United Nations Scientific Committee on the Effects of Atomic Radiation (UNSCEAR), New-York, USA, 2012.
- UNSCEAR. Unscar 2013, volume ii, scientific annex b—effects of radiation exposure of children. Technical report, United Nations Scientific Committee on the Effects of Atomic Radiation (UNSCEAR), New-York, USA, 2013.
- I. Verdinelli and L. Wasserman. Feature Importance: A Closer Look at Shapley Values and LOCO. *Preprint, arXiv:2303.05981*, 2023.
- T. Wang, F. Liang, Z. Zhou, and X. Qi. Global sensitivity analysis of hepatic venous pressure gradient (hvpg) measurement with a stochastic computational model of the hepatic circulation. *Computers in Biology and Medicine*, 97:124–136, 2018.
- R. J. Weber. Probabilistic values for games. *The Shapley Value. Essays in Honor of Lloyd S. Shapley*, pages 101–119, 1988.