



## Glutaredoxin regulation of primary root growth confers early drought stress tolerance in pearl millet

Carla de la Fuente, Alexandre Grondin, Bassirou Sine, Marilyne Debieu, Christophe Belin, Amir Hajjarpoor, Jonathan Atkinson, Sixtine Passot, Marine Salson, Julie Orjuela, et al.

### ► To cite this version:

Carla de la Fuente, Alexandre Grondin, Bassirou Sine, Marilyne Debieu, Christophe Belin, et al.. Glutaredoxin regulation of primary root growth confers early drought stress tolerance in pearl millet. eLife, In press, 10.7554/eLife.86169.1 . hal-04114234

**HAL Id: hal-04114234**

**<https://hal.science/hal-04114234>**

Submitted on 6 Jun 2023

**HAL** is a multi-disciplinary open access archive for the deposit and dissemination of scientific research documents, whether they are published or not. The documents may come from teaching and research institutions in France or abroad, or from public or private research centers.

L'archive ouverte pluridisciplinaire **HAL**, est destinée au dépôt et à la diffusion de documents scientifiques de niveau recherche, publiés ou non, émanant des établissements d'enseignement et de recherche français ou étrangers, des laboratoires publics ou privés.



Distributed under a Creative Commons Attribution 4.0 International License

## **Glutaredoxin regulation of primary root growth confers early drought stress tolerance in pearl millet**

Carla de la Fuente<sup>1,#</sup>, Alexandre Grondin<sup>1,2,3,#</sup>, Bassirou Sine<sup>2,3</sup>, Marilyne Debieu<sup>1,#</sup>, Christophe Belin<sup>4</sup>, Amir Hajjarpoor<sup>1</sup>, Jonathan A. Atkinson<sup>5</sup>, Sixtine Passot<sup>1</sup>, Marine Salson<sup>1</sup>, Julie Orjuela<sup>1</sup>, Christine Tranchant-Dubreuil<sup>1</sup>, Jean-Rémy Brossier<sup>1</sup>, Maxime Steffen<sup>1</sup>, Charlotte Morgado<sup>1</sup>, Hang Ngan Dinh<sup>1</sup>, Bipin K. Pandey<sup>5</sup>, Julie Darmau<sup>1</sup>, Antony Champion<sup>1</sup>, Anne-Sophie Petitot<sup>1</sup>, Celia Barrachina<sup>6</sup>, Marine Pratlong<sup>6</sup>, Thibault Mounier<sup>7</sup>, Pascal Gantet<sup>1</sup>, Prakash Gangashetty<sup>8</sup>, Yann Guédon<sup>9</sup>, Vincent Vadez<sup>1,2,3</sup>, Jean-Philippe Reichheld<sup>10</sup>, Malcolm J. Bennett<sup>5</sup>, Ndjido Kane<sup>2,3</sup>, Soazig Guyomarc'h<sup>1</sup>, Darren M. Wells<sup>5</sup>, Yves Vigouroux<sup>1, §</sup>, Laurent Laplaze<sup>1,2,§,\*</sup>

<sup>1</sup> DIADE, Université de Montpellier, IRD, CIRAD, Montpellier, France

<sup>2</sup> LMI LAPSE, Dakar, Senegal

<sup>3</sup> CERAAS, ISRA, Thies, Senegal

<sup>4</sup> LGDP, Université de Perpignan, Perpignan, France

<sup>5</sup> School of Biosciences, University of Nottingham, Sutton Bonington, UK

<sup>6</sup> Montpellier GenomiX, Montpellier, France

<sup>7</sup> Be More Specific, Montpellier, France

<sup>8</sup> ICRISAT, Hyderabad, India.

<sup>9</sup> AGAPi, Université de Montpellier, CIRAD, INRAE, SupAgroM, Montpellier, France

<sup>10</sup> LGDP, CNRS, Perpignan, France

# equal contribution

§ equal contribution

\* Corresponding author: laurent.laplaze@ird.fr

## Abstract

Seedling root traits impact plant establishment under challenging environments. Pearl millet is one of the most heat and drought tolerant cereal crops that provides a vital food source across the sub-Saharan Sahel region. Pearl millet's early root system features a single fast-growing primary root which we hypothesize is an adaptation to the Sahelian climate. Using crop modelling, we demonstrate that early drought stress is an important constraint in agrosystems in the Sahel where pearl millet was domesticated. Furthermore, we show that increased pearl millet primary root growth is correlated with increased early water stress tolerance in field conditions. Genetics including GWAS and QTL approaches identify genomic regions controlling this key root trait. Combining gene expression data, re-sequencing and re-annotation of one of these genomic regions identified a glutaredoxin-encoding gene *PgGRXC9* as the candidate stress resilience root growth regulator. Functional characterization of its closest *Arabidopsis* homolog *AtROXY19* revealed a novel role for this glutaredoxin (GRX) gene clade in regulating cell elongation. In summary, our study suggests a conserved function for GRX genes in conferring root cell elongation and enhancing resilience of pearl millet to its Sahelian environment.

## Introduction

Pearl millet was domesticated about 4,500 years ago in the Sahelian part of West Africa (Burgarella et al., 2018) and is one of the most heat and drought tolerant cereal crops (Debieu et al., 2017; Varshney et al., 2017). Today, it is the sixth cereal in terms of world production, and it is mostly cultivated in arid regions of sub-Saharan Africa and India where it plays an important role for food security. However, in Africa, pearl millet yield remains low compared to its genetic potential because it is mostly cultivated in marginal lands in low-input and rainfed agricultural systems and the development and adoption of improved varieties is still limited (Olodo et al., 2020).

The plant root system is responsible for water and nutrient acquisition from the soil. Breeding for root traits that could improve the crop root system efficiency has been proposed as one of the pillars of a second green revolution (Den Herder et al., 2010; Lynch, 2019, 2007). Improved crops with optimized soil resources acquisition might be particularly relevant in low input and rainfed agrosystems found in the Sahelian region of Africa (Ndoye et al., 2022). This strategy relies on the selection of root traits suitable for the specific characteristics of the target environment such as soil and climate but also agricultural practices (Lynch, 2019; Ndoye et al., 2022; van der Bom et al., 2020). It requires a better understanding of stress patterns and the performance of individual root traits in real conditions and in response to different constraints. However, only a few studies have addressed the importance of individual root traits in field conditions.

Primary root development is an important contributor to seedling vigor and greatly influences plant establishment (Peter et al., 2009). Pearl millet embryonic root system development is characterized by the formation of a fast-growing primary root that is the only architectural component of the root system for the first 6 days after germination (DAG) (Passot et al., 2016). No seminal roots are present in pearl millet and crown and lateral roots were only

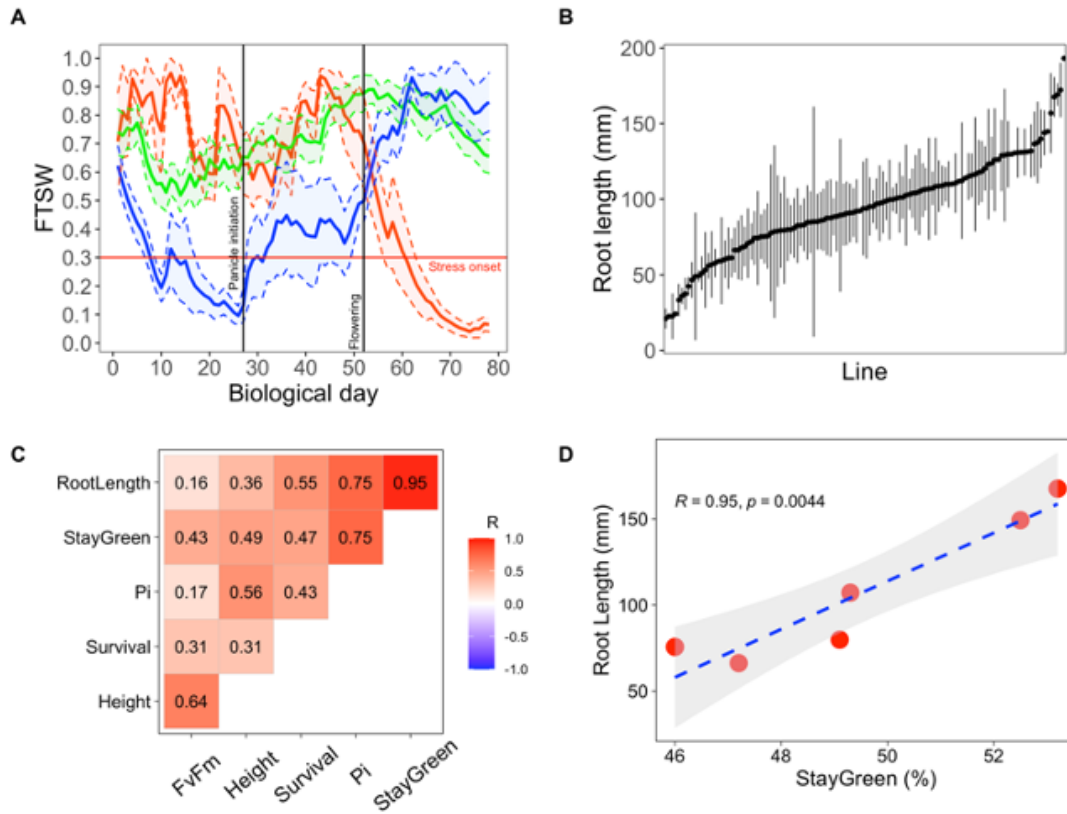
observed 6 DAG (Passot et al., 2016). We hypothesized that the fast-growing primary root might be an adaptation to the Sahelian environment (Passot et al., 2016). Here, we show that early drought stress after germination is a major constraint in Sahelian environments and that primary root growth is correlated with increased tolerance to this stress under field conditions in pearl millet. Differences in root growth seem to be mainly regulated by changes in cell elongation. A combination of GWAS and bulk segregant analysis on a bi-parental population identified one genomic region controlling this trait. Combining RNAseq, re-sequencing and re-annotation of this region, we identified a glutaredoxin-encoding gene, *PgGRXC9* as a potential candidate regulator. Functional characterization of the closest homolog in Arabidopsis reveals a new role for GRX in the regulation of root growth through cell elongation in the root apical meristem.

## Results

### Early drought stress episodes are an important constraint in Sahelian agrosystems

We previously hypothesized that the fast-growing primary root might be an adaptation to the Sahelian environment and, in particular, to early cycle drought stress episodes (Passot et al., 2016). To analyze the frequency and impact of such early drought stress, we first studied meteorological data collected for the past 21 years (2000-2020) at the CNRA Bambey station, located at the center of the pearl millet growing region of Senegal and highly representative of the climate found in Sahelian West Africa. Crops such as pearl millet are traditionally sown before or shortly after the first rain event of the rainy season. Moisture from the first rain event is used by seed to germinate and initiate their growth. We observed frequent intervals between the first and the second significant rainfall event (> 10 mm) that could last up to 40 days (Figure S1). These periods were unrelated to the timing of the first rain event.

A crop model was parameterized using soil and meteorological data (2000 to 2020) from the Bambey experimental station to determine when pearl millet faced drought stress and predict its impact on crop yield. Using a widely cultivated variety of pearl millet (Souna3) for modelling, we simulated the daily fraction of transpirable soil water (FTSW) profiles in different years to identify periods of the growth cycle when access to water was limiting. FTSW below 0.3 was considered a stressful condition. Clustering the trend of FTSW in the 21 years studied (based on the methodology of Pašiaková et al., 2013) revealed three stress patterns: early-stress, late-stress, and no-stress (blue, red and green line on Figure 1A). The crop faced early stress at a frequency of 24% over the 21 years, which resulted in an average 43% grain yield penalty compared to years without stress. Biomass production (an important source of fodder for livestock) was also reduced by 44% on average. Late-stress occurred in 19% of the years and resulted in 25% and 12% of yield and biomass penalty, respectively. No-stress was observed in 57% of the years. Hence, our analysis confirms that early drought episodes are a major constraint in Sahelian agrosystems of West Africa affecting crops during the vegetative stage.



**Figure 1. Early primary root growth and its relation with drought-tolerance related traits measured in field conditions.** (A) Stress patterns identified by clustering of simulated fraction of transpirable soil water (FTSW) trend during the crop growth of 2000-2021 years in Bambey station. FTSW = 0.3 (horizontal red line) was considered as the onset of water stress. Each point is the average of a few daily FTSW based on the biological day which was used instead of daily FTSW to highlight the critical stages (panicle initiation and flowering, black lines). Thick lines and shaded area show the mean and two times standard error, respectively. Blue red and green line correspond to early-stress, late-stress, and no-stress respectively. (B) Root length in 122 pearl millet inbred lines derived from West and Central African landraces. Root length was measured at 6 days after germination in a paper-based hydroponic system installed in a growth chamber. Points represent mean  $\pm$  se. (C) Correlation between root length and the field measured traits using adjusted lsmeans across both years. The Pearson correlation coefficients are indicated for each pair of traits. (D) Linear regression between root length and stay-green. Red points represent the lsmean for the 6 inbred lines that were common between the two field trials.

### Primary root growth is correlated with increased tolerance to early drought stress

In order to test if a fast-growing primary root after germination might be an adaptive trait to early drought stress, we first phenotyped a diversity panel of pearl millet inbred lines representative of the genetic diversity of the crop (Debieu et al., 2018). As primary root growth is linear in the first days of growth (Passot et al., 2016), root length was measured as a proxy of growth on a paper-based hydroponic system 6 days after germination in 122 pearl millet

inbred lines (5 plants/line in average for a total of 853 plants). Primary root length ranged from 21.1 to 193.2 mm with an average of 94.4 mm and a standard deviation of 32.5 mm, thus showing that a large diversity was available for this trait (Figure 1B).

The importance of early root growth for plant tolerance to early drought stress was then evaluated in field trials in 2 independent years using 9 inbred lines with contrasted root growth (slow, intermediate, and fast primary root growth). Field trials were set up during the hot dry season (March-June) in 2018 and 2020. Seeds were sown and irrigation equivalent to a 30 mm rainfall was applied. Irrigation was then stopped to mimic an early drought stress episode and plant growth and ecophysiological parameters were analyzed for the following 6 weeks (Table S1). We then analyzed the correlations between primary root length, measured in the lab, and plant performance measured in field conditions. Principal component analyses revealed a covariation of early primary root growth and stay-green (the % of leaves that remained green) as well as the performance index of photosynthesis (PI) measured both in 2018 and 2020 (Figure S2). Correlations between variables adjusted means across the two field trials showed a strong and significant relationship between early primary root growth and stay-green at the vegetative stage, an indicator of plant tolerance to drought stress ( $R = 0.95$ ,  $p < 0.01$ ; Figures 1C and 1D). Hence, our field experiments support the hypothesis that rapid growth of the primary root is beneficial for pearl millet plants to cope with early drought stress episodes after germination.

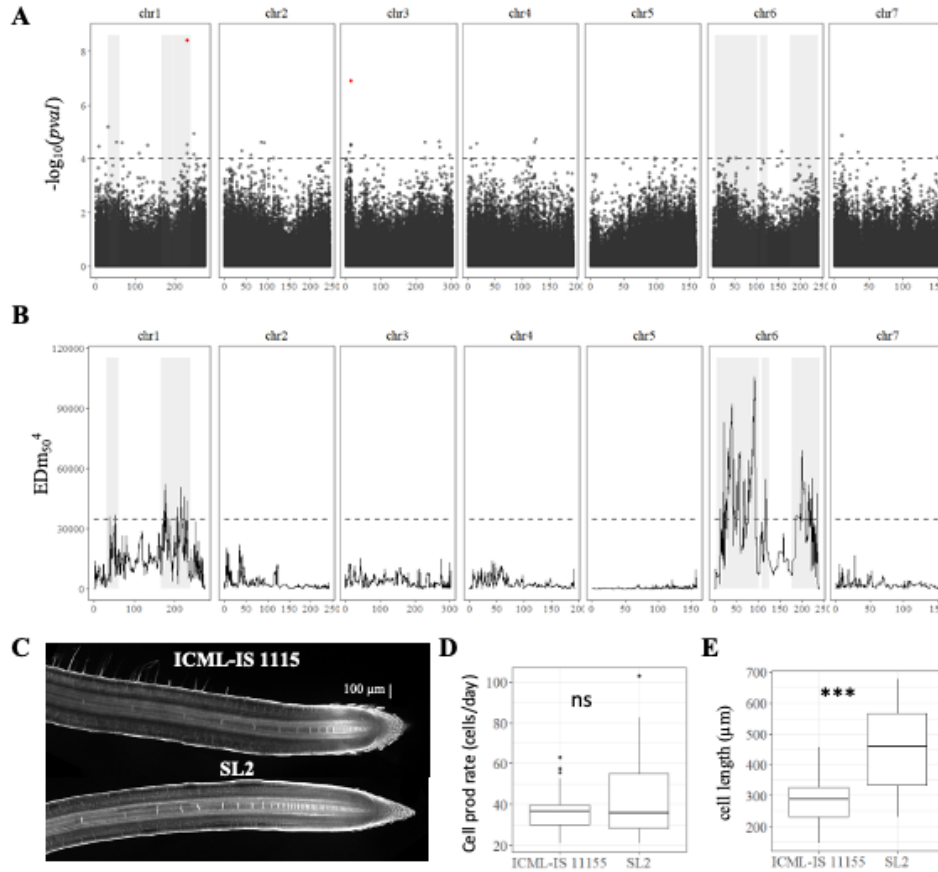
### **Identification of genomic regions in pearl millet controlling early primary root growth**

We next studied the genetic determinants of primary root growth in pearl millet. First, the heritability of early primary root growth was analyzed using our paper-based phenotyping data on the panel of inbred lines. Heritability of 0.53 was computed indicating that early primary root growth is under strong genetic control in pearl millet. We therefore conducted a genome wide association study (GWAS). Genotyping by sequencing of the panel of pearl millet inbred



lines provided 392,493 SNPs for association, after filtering on quality, with an average density of 2.5 SNPs per 10 kb [9]. For the current study, a set of 392,216 SNPs polymorphic for the 122 inbred lines with a phenotype was selected to conduct genome wide association analysis (GWAS) (de la Fuente Cantó et al., 2022). GWAS was performed using the ridge LFMM algorithm (Caye et al., 2019). In addition, we considered other GWAS methods to contrast the results (ANOVA, EMMA, or MLM; Figure S3). Our analysis revealed a total of 447 significant SNPs across the pearl millet genome associated with primary root growth from which, 109 SNPs were found highly significant with at least two other methods for association analysis at  $p\text{-value} < 10^{-4}$  (Table S2). Only two of these markers located on chromosome 1 and 3, were above the 0.05 false discovery rate (FDR) significance threshold (Figure 2A).

To validate our GWAS analysis, we generated a bi-parental population from two inbred lines with contrasting early primary root growth. The two lines, ICML-IS 11155 (low primary root growth) and SL 2 (high primary root growth), were selected based on our initial paper-based root phenotyping experiment. The significant difference in primary root growth between these two lines was confirmed 7 days after germination in a paper roll phenotyping system (Figure S4A), as well as in soil using X-ray microCT 10 days after germination (Figure S4B), thus demonstrating their contrasting primary root phenotypes were robust and independent of the experimental system.



**Figure 2. Genetic dissection of primary root length in pearl millet and cellular analysis of root apical meristem and primary root growth of contrasted pearl millet lines in two experimental systems.** (A) Manhattan plot of the GWAS by lfrmm ridge method (Caye *et al.*, 2019). The horizontal axes correspond to the map position of each of the 392,216 SNPs identified by GBS in a group of 122 inbred lines. The vertical axes indicate the  $-\log_{10} p$  value of the statistic. The dashed line delimits the threshold for highly significant SNPs ( $p$  value  $< 10^{-4}$ ). Highlighted in red, significant SNP markers above the 0.05 FDR significance threshold. (B) BSA identification of significant regions associated with primary root length using bulks of contrasted F2 lines from a bi-parental cross. The plot shows the Euclidean Distance statistic profile (y axes) across the seven pearl millet chromosomes (x axes). The dashed line indicates the 95% confidence interval threshold for the localisation of significant regions. In both plots, the shaded area delimits the extent of the six significant regions identified by BSA and therefore the overlap with significant SNPs identified by GWAS (A) and the correspondence with the BSA peaks found (B). (C) Confocal image of the root tip of the contrasted inbred lines for primary root growth (ICML-IS-1115 and SL2 with slow and fast growth respectively). (D) Estimation of cell production rate for each genotype according to Beemster *et al* (2002). (E) Maximum cell length reached in the root elongation zone for each genotype. \*\*\*  $p$ -value  $\leq 0.0001$ , \*\*  $p$ -value  $\leq 0.001$ , \*  $p$ -value  $\leq 0.01$ , ns not significant.

Lines SL2 and ICML-IS 11155 were crossed and 737 F2 plants were phenotyped for early root growth together with their parents (33 ICML-IS 11155 and 30 SL2 plants). The phenotypes of F2 plants showed a normal distribution encompassing the range of phenotypes from the 2 parents (Figure S5). 75 F2 plants were selected for each extreme phenotype (75 highest and 75

lowest growth) and were used for bulk DNA extraction. The corresponding DNA was then used for genotyping by sequencing. Mean average sequencing depth in the bulks corresponded to 1028X (High growth) and 814X (Low growth). After filtering, a group of 33 582 SNP variants (2.1 SNP per 100 kb in average) identified between the bulks was used to assess the differences in allele frequency linked to the root length phenotype. Bulk Segregant Analysis (BSA) revealed differences in allele frequency for 1,285 SNPs (Figure 2B, Table S3). Six regions consisting of clusters of neighboring markers with overlapping region of significance defined by simulations (de la Fuente Cantó and Vigouroux, 2022) and equivalent to  $\pm 8$  Mbp around each significant marker were identified on chromosome 1 (RL1.1, RL1.2, RL1.3) and chromosome 6 (RL6.1, RL6.2, RL6.3; Figure 2B). Eighteen marker-trait associations (MTAs) identified by GWAS co-localized with these BSA regions of significance (Table S4) including the most significant GWAS SNP on chromosome 1 at position 231264526 (Figure 2A).

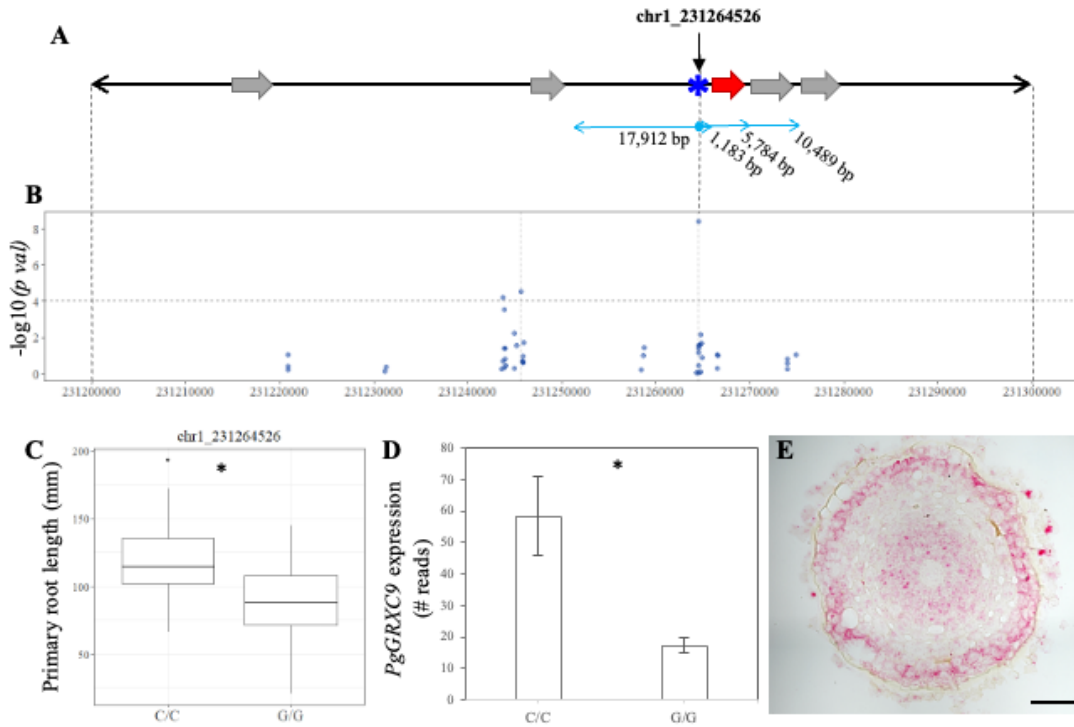
Root growth is dependent on cell division and cell elongation activities occurring at the root tip. To identify the cellular process responsible for changes in root growth between the two parental lines, ICML-IS 11155 and SL2, we used confocal microscopy to image and measure cell elongation in the root tip starting from the quiescent center (Figure 2C, Figure S6). While cell production rates were similar in both lines (Figure 2D), SL2 (fast growth line) exhibited a significantly higher cell elongation rate than ICML-IS 11155 (Figure 2E). Hence, the significant difference in root growth between inbred lines SL2 (fast growth) and ICML-IS 11155 (slow growth) was mainly driven by changes in root cell elongation.

As differences in root growth between the two parent lines was mainly driven by cell elongation, we hypothesized that it might be linked to genes that are expressed in the root tip. We therefore profiled gene expression using RNAseq in the primary root tip (2 cm apex) of inbred lines ICML-IS 11155 (slow growth) and SL 2 (fast growth). Reads were mapped to the CDSs predicted in the reference genome [13] for expression analyses. 1778 genes showed

significant differences in gene expression between the two contrasted lines using three combined statistical tests (EdgeR, DESeq et DESeq2,  $p$ -value < 0.01). Unexpectedly, a large proportion of the reads (31,48% in average in the 6 RNAseq experiments) did not map to predicted genes on the reference genome. Hence, our transcriptomics analysis identified genes that are differentially expressed in the root tip of inbred lines ICML-IS 11155 and SL 2 but revealed that some genes expressed in root tips are not annotated in the current version of the pearl millet genome.

### **Re-sequencing of the root length QTL region reveals a new GRX-encoding gene**

We re-analyzed a 1 Mbp genomic region on chromosome 1 around the most significant GWAS marker-trait association, corresponding to SNP chr1\_231264526, that co-localizes with a BSA QTL. This region contained a large proportion of unknown nucleotides (16.39% N) thus making gene annotation difficult. To obtain better quality sequence information, long reads (Nanopore technology, Yuan et al., 2017) corresponding to the target QTL regions were recovered and re-annotated using structural and gene expression (RNAseq) data. Re-annotation revealed one novel 465 bp CDS, 1103 bp downstream of the significantly associated SNP (chr1\_231264526, Figure 3A & B). This new CDS encodes a protein with strong homology to glutaredoxin (GRX) C9-like proteins from various cereals and was named *PgGRXC9*.



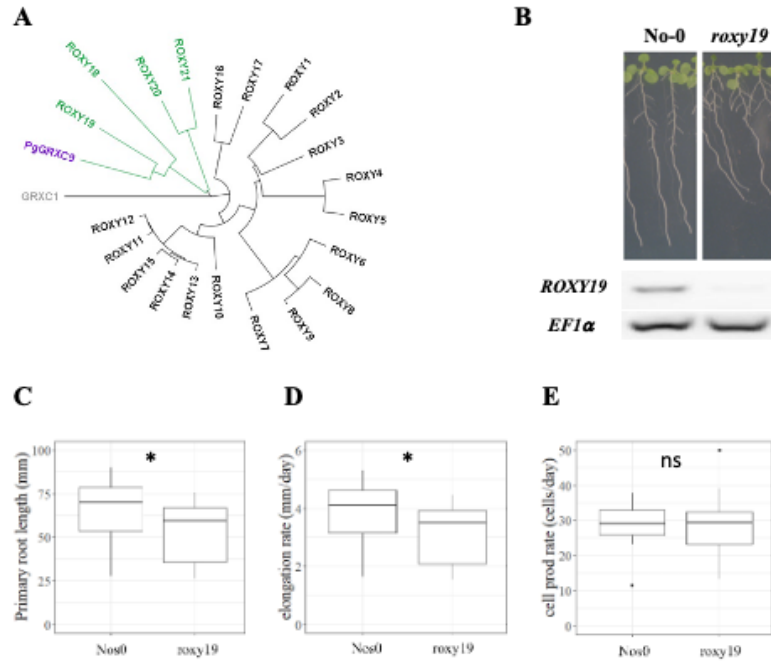
**Figure 3. Identification of candidate genes for primary root length in pearl millet.** (A) Annotated genes in 100 kb region of chromosome 1 harbouring significant SNPs identified by GWAS and coincident with a BSA significant region. Blue asterisk shows the position of the SNP with the most significant association. Grey arrows represent the predicted genes according to the reference genome (Varshney *et al.*, 2017). The red arrow represents the new predicted gene, *PgGRXC9*, identified as a result of reannotation of the genomic interval using *de novo* pearl millet assembly based on contig sequences. (B) GWAS Manhattan plot zoomed in the 100 kb interval on chromosome 1. Dots represent the  $-\log_{10}(p\text{-val})$  of the lfrmm ridge statistic (y axis) for the SNPs identified in the region. The dashed horizontal line shows the threshold for highly significant SNPs. Positions and physical distance between genes and markers are displayed in bp. (C) Primary root length phenotype associated to the allelic variants of the two significant SNPs in the region: chr1\_231264526 ( $N_{C/C}=26$ ,  $N_{G/G}=74$ ). (D) Expression of *PgGRXC9* for the two alleles from the RNAseq data. \*  $p\text{-value} \leq 0.01$ . (E) Transversal section in the elongation zone of a primary root showing the expression profile of *PgGRXC9* as indicated by RNAscope. Scalebar = 50  $\mu\text{m}$ .

Two alleles at this locus exist in our population (C or G) with plants carrying a homozygous C/C allele (21.3% of the lines in our population) having a significantly higher root growth than plants carrying the G/G homozygous allele (60.7% of the lines; Figure 3C). We found that *PgGRXC9* expression was significantly higher in the root tip of the line carrying the allele associated with higher root growth (C/C) compared to the line carrying the lower growth allele (G/G; Figure 3D). *In situ* hybridization using the RNAscope technology revealed expression in the stele and epidermis in the root tip and elongation zone (Figure 3E, Figure S7). Expression

was also observed in the columella cells of the root cap and in the stele of the differentiated part of the root (Figure S7). We then used the RNAseq data to search for polymorphisms between the two contrasted parent lines used for BSA. No sequence polymorphisms were found in the predicted coding sequence of the gene between the two parent lines. However, 2 polymorphisms were detected in the 5'UTR region. Altogether, our results suggest that *PgGRXC9* is a positive regulator of root growth and that a polymorphism in the promoter region of *PgGRXC9* associated with changes in its expression level appeared responsible for a quantitative difference in root growth between the two lines.

### ***PgGRXC9* Arabidopsis ortholog *ROXY19* also regulates root cell elongation**

To test the hypothesis that changes in *PgGRXC9* expression level are responsible for a change in root growth, we studied its ortholog in the model plant *Arabidopsis thaliana* (as functional genomic studies are not possible in pearl millet). The closest homolog in Arabidopsis was *ROXY19* (*AT1G28480*) with 56% identity at the protein level (Figure 4A; Figure S8). The ROXY family is a land plant-specific family of GRX, with 21 members in Arabidopsis (Meyer et al., 2009). They all harbor a Cys-Cys (CC) putative active site and bind to TGA type transcription factors via the C-terminal domain (Meyer et al., 2012). Several of them contain a final ALWL C-terminal motif responsible for binding to TOPLESS and TPR transcriptional co-repressors (Uhrig et al., 2017). All these important amino acids were conserved in *PgGRXC9* (Figure S8). *ROXY19* belongs to a subgroup of 4 ROXYs (*ROXY18-21*) that contain a specific N-terminal domain of unknown function, that was also present in *PgGRXC9* (Figure S8).



**Figure 4. The Arabidopsis homolog of PgGRXC9 regulates root growth in Arabidopsis.** (A) Phylogenetic tree of ROXYs protein sequences. This tree has been obtained from pairwise alignments of all whole protein sequence pairs, using Neighbor-Joining method and Jukes-Cantor distance matrix. GRXC1 (grey), a member of Class I GRX, is used as the tree root. Arabidopsis ROXY18-21 are represented in green, and PgGRXC9 is represented in purple. (B) Contrasted primary root phenotype in Nos0 and *roxy19* in 17 days old seedlings grown in agar plates. (C) Primary root length of Nos0 (N=27) and *roxy19* (N=25). (D) Cell elongation rate. (E) Estimation of the cell production rate assuming a steady root growth rate. \*  $p$ -value  $\leq 0.01$ , ns: not significant.

Transcriptomic data indicate that *ROXY19* is expressed in root tissues, with the strongest expression detected in the columella and stele of the elongation and maturation zone and some expression in the ground tissue and epidermis (Belin et al., 2015). Given this expression profile was similar to *PgGRXC9* in pearl millet, we exploited a *roxy19* null mutant available in the *Nossen* (No-0) background [19] to study its function. Strikingly, we observed that *roxy19* had reduced primary root growth compared to its wild-type ecotype (No-0; Figure 4B, C). Closer examination revealed that the defect in *roxy19* root growth was due to a reduction in cell elongation (Figure 4D), whereas cell production rate was similar in the mutant and wild type (Figure 4E), thus mimicking the phenotype observed in pearl millet. Hence, our functional

studies reveal that *ROXY19*, the closest homolog of *PgGRXC9* in *A. thaliana*, is a positive regulator of root growth through modulation of cell elongation.

## Discussion

Drylands, defined as regions where precipitation is lower than atmospheric water demand, cover around 40% of the land surface and host about 2 billion people (Wang et al., 2022). They are key regions for global food security as it is estimated that they are responsible for about 60% of global food production (Wang et al., 2022). They also play an important role for the global carbon budget (Wang et al., 2022). Climate change is expected to have a negative impact on agriculture in drylands with direct consequences for the livelihood of about 178 million people by 2050 under a 1.5°C temperature increase scenario (Wang et al., 2022). There is therefore an urgent need to devise new agricultural practices and crop varieties to address this challenge. This is particularly critical in the Sahel, the dryland region stretching across Africa and delimited by the Sahara to the North and the Sudanian savanna to the South, where agriculture is mainly rainfed with limited access to fertilizers and irrigation (Ndoye et al., 2022).

Pearl millet was domesticated in the Sahel about 4,500 years ago (Burgarella et al., 2018) and it is a key crop for food security in that region (Debieu et al., 2017; Varshney et al., 2017). In the Sahel, drought stress is a major factor limiting crop yield. The semi-arid tropical climate is characterized by a long dry season and a short rainy season where most of the agriculture occurs. Pearl millet is traditionally sowed before or right after the first rain so that the water from this first rain is used for germination and seedling establishment. However, the precipitation pattern is irregular and varies from season to season and these intra- and interannual variability are expected to increase with future climate (Sultan and Gaetani, 2016). To devise strategies to adapt agriculture to future climate, it is important to identify the stress patterns faced by crops. In this study, we used meteorological data together with a crop model



to estimate the water stress patterns faced by pearl millet in the 2000-2020 period. This revealed 3 main types of patterns, early drought stress, terminal drought stress and no stress. Early drought stress, corresponding to rain pause during crop establishment, was found to occur roughly one fourth of the years and to have a large impact on both grain and biomass (an important source of fodder) production. Indeed, we found that lapse between the first rain and subsequent significant rain were occurring frequently, and current models predict that such gaps are going to be more frequent in future climate (Sultan and Gaetani, 2016). This indicates that early drought stress after germination is a major constraint for crop growth in the Sahelian agrosystems.

The embryonic root system makes most of the root system for the first weeks of the seedlings life and is therefore important for crop establishment. Interestingly, we previously reported that early root system development in pearl millet is characterized by a unique fast growing primary root (Passot et al., 2016). There are no seminal roots, and post-embryonic root system branching (formation of lateral and crown roots) only starts 6 days after germination (Passot et al., 2016). We hypothesized that this could be beneficial for early establishment and access to deep resources (water and nutrients) as an adaptation to the Sahelian climate and, in particular, to face early drought stress events. We used the natural variability for primary root growth in pearl millet to test this hypothesis in two years of field trials set up to mimic early rain pause episodes after germination. We observed that pearl millet lines with faster primary root growth had better tolerance to this stress thus indicating that indeed fast primary root growth was beneficial to cope with post-germination drought stress.

Early primary root growth showed a high heritability. We therefore studied the genetic bases of this useful trait using a combination of association genetics (GWAS) and QTL analysis (BSA). We are confident our genetic analysis targeted specifically early primary root growth rather than seed reserves or seedling vigor because 1) we previously showed that primary root

growth was not correlated to seed weight in our experimental set up (Passot et al., 2016) and 2) we selected parents with very contrasted root growth but similar shoot biomass to generate the bi-parental population used for QTL analysis. Moreover, the lines used for QTL analyses showed significant differences in primary root growth in different root phenotyping systems (including soil columns) thus suggesting that the loci we identified are robust and relevant for primary root growth *in naturae*. Our genetic analysis revealed a limited number of loci controlling early primary root growth.

We focused our analysis on the most significant marker-trait association for GWAS that was co-localizing with a BSA QTL on chromosome 1. Re-sequencing and re-annotation of the corresponding genomic region revealed a new gene close to the most significant SNP. This gene, *PgGRXC9*, encodes a potential glutaredoxin protein. The gene is more expressed in the root tip of the line with the allele associated with higher root growth. We found no polymorphism in the *PgGRXC9* coding region in the two parents of the QTL population. We showed that the closest homolog in *A. thaliana*, *AtROXY19*, has a similar expression pattern and that it regulates primary root growth. Interestingly, the root growth phenotypes observed in contrasted pearl millet lines and in the *roxy19* mutant indicate that, in both cases, regulation of root growth occurs at the cell elongation level. Although the link between *PgGRXC9/AtROXY19* and root growth elongation is novel, previous studies have revealed connections between root redox status and growth. In Arabidopsis, other members of the ROXY family have been shown to regulate root growth elongation in response to nitrate (Ota et al., 2020; Patterson et al., 2016). More generally, redox homeostasis has been previously reported to regulate root meristem organization and functioning in Arabidopsis (e.g., Bashandy et al., 2010; Tsukagoshi, 2016; Tsukagoshi et al., 2010; Vernoux et al., 2000) including regulation of cell elongation (Mabuchi et al., 2018; Tsukagoshi, 2016). The mechanism and the actors of the redox regulation of root growth elongation will need further investigation.

Based on our results, we propose that redox regulation in the root meristem is responsible for a root growth QTL in pearl millet. Indeed, our data suggest that changes in *PgGRXC9* expression level due to polymorphisms in the promoter or 5'UTR region of the gene level might cause differences in root cell elongation and ultimately root growth that are important for adaptation to post-embryonic drought stress. Further work will be needed to validate this hypothesis. Pearl millet is an orphan crop and no functional genomics tools are currently available. Future work will first target the development of an efficient gene editing protocol in this species.

### **Ideas and Speculation**

Pearl millet evolved and was domesticated in the Sahel. Its seeds are small (8 mg on average, about 5 and 20 times lighter than wheat or maize seeds respectively for example) with limited reserves available for early seedling growth. It invests the available seed reserves towards the growth of a unique primary root to rapidly colonize deeper soil layers rather than forming more root axes (seminal roots for example) as seen in other cereals. Based on our results, we speculate that this specific early root development strategy was selected during evolution to cope with the specific rain pattern encountered in the Sahel.

### **Material and methods**

#### **Plant materials**

The panel of pearl millet inbred lines derived from West and Central African landraces (open-pollinated varieties) used in this study has been previously described (Debieu et al., 2018). Nine lines from this panel that were contrasting for root length were selected for field trials (Table S6).

## **Field trials**

Field experiments were performed at the CNRA station (Centre National de Recherche Agronomique) of the Institut Sénégalais des Recherches Agricoles (ISRA) in Bambey, Senegal (14.42°N, 16.28°W), during the dry season of 2018 and 2020 to fully control irrigation. Fields are composed of deep sandy soil with low levels of clay and silt (12%) and organic matter (0.4%). Clay and silt content increase with soil depth from 10.2% in the 0 to 0.2 m layer to 13.3% in the 0.8 to 1.2 m layer. Experiments were set up using a complete randomized block design with 4 plots per variety, each composed of 6 rows of 6.3 m long with 0.9 m between plants and 0.9 m between rows (42 plants/plot). Irrigation was provided after sowing (30 mm of water) to allow seeds to germinate and was followed by a period of 42 days of water withholding to impose seedling drought stress. Thinning was performed 15 days after sowing to conserve a single plant per planting hole. Fertilization (NPK) following standard recommendation of 150 kg ha<sup>-1</sup> NPK (15-15-15) was applied to the entire trial after sowing and before irrigation. Fields were maintained free of weeds. Plant height was measured at 42 days after sowing. Stay-green trait expressed as the percentage of green leaves compared to the total number of leaves was estimated on 3 plants per plot at 42 days after sowing. Survival rate was measured as the percentage of surviving plants at 42 days after sowing in each plot compared to the initial number of plants that had emerged. Photosynthesis parameters (Fv/Fm: maximum quantum efficiency of photosystem II and PI: performance index of photosynthesis) were measured on three plants per plot at 32 days after sowing in both 2018 and 2020 using a Handy Pea chlorophyll fluorometer (Hansatech Instruments Ltd.).

## **Identification of water stress pattern**

Long-term weather data (2000-2021) in CNRA (Bambey, Senegal) were gathered and analyzed to evaluate how the rainfall gap affects crop growth. An adapted version of the Simple

Simulation Model (SSM-iCrop, (Soltani et al., 2013; Soltani and Sinclair, 2012)) was used to simulate the crop growth of a common West African pearl millet genotype (Souna3) and dynamic of water in the soil. To test the effect of water limitation alone, the model was run in water-limited potential mode with 3.7 plants per m<sup>-2</sup> density and no fertilizer limitation. From April 10th, the model began simulating soil water balance with a quarter-saturated profile. Sowing date was defined by the first significant rain of the year (actual transpirable soil water superior or equal to 10 mm). Clustering was done based on the trend of the fraction of transpirable soil water (FTSW) from sowing date to maturity in different years to group years into different stress patterns and the effect on the yield and biomass. The NbClust Package (Pašiaková et al., 2013) was used to determine the optimal number of clusters and the dynamic time warping method to cluster the daily simulated FTSWs in different years.

### **Root growth phenotyping**

For high-throughput experiments (association genetics and bulk segregant analysis), plants were phenotyped for primary root growth with a paper-based hydroponic system as previously described (Passot et al., 2016). Seeds were surface-sterilized and pre-germinated in Petri dishes, transferred into pouches 24 hours after germination at a density of 3 seeds per paper and then maintained in a growth room with a 14 hour photoperiod (28°C during day and 24°C during night). Pictures of the root systems were taken 6 days after germination with a D5100 DSLR camera (Nikon) at a resolution of 16 M pixels. The camera was fixed on a holder to maintain the same distance between the lens and each root system. Primary root lengths were measured using RootNav (Pound et al., 2013). Rhizotron experiments were performed as previously described (Passot et al., 2018). For X-ray tomography, seeds were sterilized with 20% bleach for 5 minutes, then washed with sterilized water five times. Sterilized seeds were pre-germinated on moist sterilized filter paper for 36 hours at 28°C in a plant growth chamber (12-

hour photoperiod and 300  $\mu\text{mol}/\text{m}^2/\text{s}$  light with 70% relative humidity). Equally germinated pearl millet seedlings (1cm radicle length) were gently placed in loamy sand soil in CT columns (30 cm height x 5cm diameter). Loamy sand soil collected from the University of Nottingham farm at Bunny, Nottinghamshire, UK (52.52 °N, 1.07 °W) was crushed thoroughly and sieved through 2 mm mesh size. These columns were saturated with water and then drained to field capacity. Five replicates of each SL2 and ICML-IS 11155 pearl millet seedlings were grown for 10 days for the CT experiment in a growth chamber maintained at a 12-hour photoperiod at 25°C and 250  $\mu\text{mol}/\text{m}^2/\text{s}$  light with 60% relative humidity. The root systems of 10-day old pearl millet lines (ICML-IS 11155 and SL 2) were imaged non-destructively using a GE Phoenix v|tome|x M 240 kV X-ray tomography system (GE Inspection Technologies, Wunstorf, Germany). Scans were acquired by collecting 3433 projection images at 140 kV X-ray energy, 200  $\mu\text{A}$  current and 131 ms detector exposure time at scan resolution of 45  $\mu\text{m}$  in FAST mode (8-minute total scan time). Three-dimensional image reconstruction was performed using Datos|REC software (GE Inspection Technologies, Wunstorf, Germany) and root length was measured using the polyline tool in VGStudioMax (Volume Graphics GmbH, Germany).

For Arabidopsis experiments, seeds were surface-sterilized and placed on plates containing half-strength Murashige and Skoog (1/2 MS) medium with 0.5  $\text{g}\cdot\text{l}^{-1}$  MES and 0.8% (w/v) plant agar without sucrose. All plates were incubated vertically at 20 °C with 160  $\mu\text{E m}^{-2} \text{s}^{-1}$  light intensity and a 16h light / 8h dark regime. The primary root elongation rate was quantified between day 8 and day 17. Lengths were quantified from pictures using the public domain image analysis program ImageJ 1.52i (<https://imagej.nih.gov/ij/>) and its NeuronJ plugin.

## Heritability

Broad sense heritability was computed with the following formula:

$$H^2 = \frac{\text{Var}(\text{line})}{\text{Var}(\text{line}) + \frac{\text{Var}(\text{res})}{n_{\text{plant/line}}}},$$

where

- $n_{\text{plant/line}}$  is the average number of plants measured per line,
- $\text{Var}(\text{line})$  is the variance associated with lines,
- $\text{Var}(\text{res})$  is the residual variance.

Both variances are parameters of the following linear mixed model:

$$\text{Length} = \mu + \alpha_{\text{line}} + \varepsilon_{\text{res}},$$

where  $\mu$  is the overall mean length,  $\alpha_{\text{line}}$  is the random effect attached to the lines with

$\alpha_{\text{line}} \sim \text{N}(0, \text{Var}(\text{line}))$  and  $\varepsilon_{\text{res}}$  is the error term with  $\varepsilon_{\text{res}} \sim \text{N}(0, \text{Var}(\text{res}))$ .

## Genome wide association mapping

Genotyping by sequencing of the panel of inbred lines was reported in previous work (Debieu et al., 2018). In order to conduct association mapping, we first estimated population structure based on the ancestry coefficients estimated with the R package LEA v2.0. Then, GWAS was performed using latent factor mixed model (LFMM 2.0) which corrects for unobserved population confounders and considers ridge estimates (Caye et al., 2019). Given the reduced number of lines, GWAS was performed using four other methods for association analysis: analysis of variance (*i.e.*, ANOVA), Efficient Mixed Model Association or EMMA (Kang et al., 2008), Mixed Linear Model or MLM (Yu et al., 2006) and a previous version of LFMM (Frichot et al., 2013).

## Bulk segregant analysis

Root growth in F2 seedlings derived from the cross between ICML-IS 11155 and SL-2 (low and high primary root growth respectively) was characterised in the paper phenotyping system

as described above. The 10% extreme lines in the tails of the distribution were selected to form the bulks of contrasted lines. Leaf discs (1.5 mm diameter) were sampled for each line during the phenotyping experiment and stored at -80°C. Leaf discs from selected lines were pooled together to make the high root growth (H) and low root growth (L) bulks for DNA extraction. Genomic DNA was isolated for each bulk using the MATAB method as previously described (Mariac et al., 2006). DNA libraries were constructed from genomic DNA fragmented by acoustic shearing (Bioruptor®) with a peak fragment target size of 200 – 300 bp. Sheared DNA was end-repaired using a T4 polymerase (End Repair NEB®) and bound with the P5 and PE-P7 sequencing adaptors (Rohland and Reich, 2012). A combination of unique oligonucleotides barcode sequences was ligated to the P5 adaptor to index the DNA libraries derived from each bulk (H and L) and from the parental lines of the cross. Then, equimolar amounts of each DNA library were combined in the genomic DNA bank for the cross. Subsequently, the DNA bank library was hybridized with biotinylated RNA probes or ‘baits’ (myBaits®) targeting the first 500 bp of the 32,100 pearl millet predicted genes. Finally, high-throughput sequencing of the enriched DNA library was performed on an Illumina HiSeq sequencer by Novogene Company Limited (HK). Initial sequencing quality checks using FastQC version 0.11.5 (Andrews, 2010) were followed by trimming and quality filter steps on which adaptors, barcode sequences and low-quality reads (< 35 bp) were removed. Filtered reads were aligned to the pearl millet reference genome (Varshney et al., 2017) using BWA MEM algorithm (BWA version 0.7.17 - r1188 (Li and Durbin, 2009)). Reads mapping at the target enriched regions were used for SNP calling using the UnifiedGenotyper algorithm from GATK 3.7 (McKenna et al., 2010) with the parameter down-sampling limit (dcov) set at 9000. Multi-allelic sites and those with low total allele frequency (AF<0.25) were removed. In addition, sites with either low or high total sequencing depth (below the 25<sup>th</sup> and above the 95<sup>th</sup> percentiles respectively) were removed.



Finally, SNPs with more than 50% missing data and minor allele frequency under 5% were excluded.

For bulk segregant study, only biallelic SNP variants of the bulks that were present in the parental lines of the cross were kept. The line ICML-IS 11155 (low primary root growth) was used as the reference genome for the cross to designate the alternate and reference SNP variants in the bulks. Out of the range of statistical approaches for measuring the differences in allele frequency in bulk segregant analysis, Euclidean distance-based statistics as suggested by Hill et al. 2013 was selected based on a preliminary study on which we tested the efficiency of the methods for QTL detection using simulations (de la Fuente Cantó and Vigouroux, 2022). The Euclidean distance between allele frequencies of the bulks at each marker position ( $EDm$ ) was calculated as follows:

$$EDm = \sqrt{(faL - fAL)^2 + (faH - fAH)^2}$$

Where  $fa$  and  $fA$  correspond to the allele frequency of the alternate and reference allele in the low bulk (L) and the high bulk (H) respectively. Then, to reduce the effect of sequencing noise and increase the signal of the differences in allele frequency we calculated the fourth power of the cumulative  $EDm$  value in windows of 100 consecutive markers (Omboki et al., 2018; Zhang et al., 2019). The confidence interval of the statistic was determined using simulations as described (de la Fuente Cantó and Vigouroux, 2022).

## **RNAseq**

Seeds were surface-sterilized and germinated in Petri dishes containing wet filter paper for 24 hours in the dark at 27°C. After two days, plants were transferred to hydroponic tanks containing 1/4 Hoagland solution and grown for 15 days at 27°C. RNA was extracted from the root tip (2 cm apex) of the primary root using the RNeasy Plant Mini Kit (QIAGEN). RNA-seq was performed by the Montpellier GenomiX Platform (MGX, <https://www.mgx.cnrs.fr/>).

Sequencing was performed on an Illumina HiSeq 2500. Analyses were performed as previously described (de la Fuente Cantó et al., 2022). Three different statistical tests were used to identify differentially expressed genes: EdgeR (McCarthy et al., 2012; Robinson et al., 2010), DESeq (Anders and Huber, 2010) and DESeq2 (Love et al., 2014). GO terms enrichment was performed in the 1778 genes that were significantly differentially expressed between the slow growth and fast growth lines according to the three statistical tests using the TopGO package in R. Briefly, overrepresentation of GO terms in the list of differentially expressed genes (1032 of the 1778 with GO annotations) was investigated in relation to the list of annotated pearl millet genes with GO annotations (16620 genes with GO annotations and 47234 GO terms in total; (Varshney et al., 2017)) using a Fischer test. Each GO categories were tested independently or considering hierarchical links between GO terms. GO terms showing *p*-values below 0.01 were further considered for enrichment analysis.

### **Cellular analysis of root meristems**

Root meristem phenotype of lines with contrasted primary root length was characterized using confocal microscopy. Lines ICML-IS 11155 and SL-2 (low and high primary root growth respectively) were grown in paper rolls under controlled conditions in a growth room. In brief, pre-germinated seeds were sown along the long side of germination paper (Anchor Paper Company, USA) rolled on itself and imbibed in ¼ strength Hoagland solution (Hoagland and Arnon, 1950). Each paper roll was placed in an Erlenmeyer flask containing 200 ml of nutrient solution, a volume maintained constant throughout the experiment. Primary root length was measured, and 2 cm length were sampled from the tip of one-week old seedlings. Root tips were fixed in FAA solution for 24 hours. Then, root tips were washed twice in PBS solution and moved to the ClearSee clearing (Kurihara et al., 2015) solution for a minimum of 48 hours. Before imaging, root tips were stained for 30 minutes in 0.1% Calcofluor White and washed in

ClearSee™ for other 30 minutes (protocol adapted from Ursache et al. 2018). Root tip images were obtained using a Leica SP8 confocal microscope equipped with a 20 x /0.70 dry objective at a detection range of 420-485 nm. Images were analyzed using the Broadly Applicable Routines for ImageJ (Ferreira et al., 2015). Cell walls from the meta-xylem vessel were used to estimate cell length along the axial axis of the root. The “find peaks” option was used to determine the coordinates of the cell walls along a segmented line traced from the quiescent center to the mature zone where the first root hairs were observed, and maximum cell length was reached. Consecutive data points defined the cell length along the root axis and a logistic function was fitted to the data to characterize axial root growth (Morris and Silk, 1992). Elongation rate was estimated as the root length reached per day of experiment. This value divided by the maximum cell elongation defined per sample was used to approximate the cell production value or number of cells produced in the meristem per day assuming steady-state growth (Beemster et al., 2002).

### **Re-annotation of QTL region using long reads data**

Long reads were used to reannotate the QTL region as in Grondin et al. 2020 (Genbank accessions MT474864 and MT474865). For identification of Nanopore contigs corresponding to the QTL region, a 1MB sequence located around the most significant GWAS SNP was extracted from the reference genome and aligned to the long read genome using the nucmer tool (MUMmer version 4.0.0beta2, -mum option (Marçais et al., 2018)) with a minimum aligned sequence length of 300 bp. We pre-selected contigs alignments if at least five regions of the same contig were aligned successively to the QTL region in a span shorter than 20kb and covering at least 3% of the QTL sequence. Contigs were considered as valid if the alignment covered at least 40% of the contig length and 20% of the QTL length. For annotation, a *de novo* transposable elements (TEs) library was generated from the long reads with RepeatModeler2

(version 2.0.1, options -engine ncbi (Flynn et al., 2020)). TEs were detected and removed using RepeatMasker (version 4.1.0 (Tarailo-Graovac and Chen, 2009)) with the *de novo* TEs library. Annotation of the genome was performed with MAKER2 (version 2.31.9 (Holt and Yandell, 2011)) using all ESTs sequences downloaded from the NCBI (organisms: *P. glaucum*, *Oryza sativa*, *Zea mays*, *Sorghum bicolor*, *P. miliaceum*, *Setaria italica*), all protein sequences of *P. glaucum* available on the NCBI (July 2020), all protein sequences of annotated genes on the reference genome (<http://gigadb.org/dataset/100192>) and the Uniprot-Swiss-Prot protein database (section viridiplantae, release-2020\_06). RNAseq data mapping was performed with TOGGLE (v3 (Tranchant-Dubreuil et al., 2018)). Reads were aligned to the long-read sequences with HISAT2 (version 2.0.1 (Kim et al., 2015)) and an annotation file was produced with Stringtie (version 1.3.4 (Pertea et al., 2015)). This file was used as input of MAKER2 (default parameters, the SNAP HMM *O. sativa* file model). Predicted protein sequences were aligned to the Uniprot-Swiss-Prot protein database (section viridiplantae) using blastx (Altschul et al., 1990). Genes with protein domain signatures were recovered using Pfam database and InterProScan (version 5.19-58.0, -appl pfam -dp -f TSV -goterms -iprlookup -pa -t p (Mulder and Apweiler, 2007)).

### ***In situ* hybridization**

Pearl millet root tip fixation, embedding, and sectioning step were performed as described (Mounier et al., 2020). Briefly, 7 days-old millet primary root tip (1,5 cm) were hand-dissected and the tip were immediately aligned between two biopsy foam (M476-1, Simport, Canada), and transferred in a cassette (1,267,796 Thermo Scientific, USA) in a 3:1 ethanol:acetic acid fixative solution. The samples were then placed in a fresh fixative solution and a 5 minute vacuum was applied two times. The solution was then replaced by a fresh fixative solution and samples were stored over-night at 4°C. The samples were then subjected to several 5 minutes

baths with increasing ethanol concentrations (75, 80, 85, 90, 95 and 100%), one bath in an ethanol/butanol (1:1) solution and one bath in absolute butanol on ice. The samples were transferred to a water bath at 54 °C inside of a histology microwave oven (Histos 5 Rapid Tissue Processor, Milestone, Italy). The samples were then subjected to a bath in butanol/paraffin (1:1) solution at 54 °C and 300 W and then two baths in paraffin at 54 °C and 250 W. Prior to the embedding step, the root bundles were rapidly removed from the cassettes while the paraffin was still liquid and transferred to a cold RNase-free surface. The bundles were subsequently transferred vertically and placed upside down in a molding tray (E70182, EMS, USA). The paraffin blocks were maintained at 4 °C and protected from light. Transversal sections with a thickness of 8µm were cut on an RNase-free microtome (RM2255, Leica, Germany) and mounted on a cut edge frosted glass slide (VWR, 631-1551) prewarmed at 45°C with drops of RNase-free water. Slides were then baked at 60°C until the section was well fixed on the slide (around 20 minutes) prior to RNAscope.

The RNAscope assay was performed by Be More Specific. Probes against *PgGRXC9* were custom-designed by ACD and are available in the ACD catalogue as Came-GRXC9-C1 (Ref. 1187801-C1). The probes were designed based on the *PgGRXC9* re-annotated sequence and were complementary to nucleotides at positions 71 to 671, excluding the 398 to 510 positions. The negative probe was provided by ACD (Accession # EF191515). The *in-situ* hybridization assay was performed using the ACD RNAscope® 2.5 HD Detection Reagent-RED kit (cat. no. 322360) using the provided protocol. (<http://www.acdbio.com/technical-support/user-manuals>). Imaging of tissue sections was performed using a Nikon Eclipse NI-E (Nikon Corporation, Tokyo, Japan) with a 40X Plan Apo λ 0.95 NA objectives. Images were processed using imageJ contrast enhancement tool to 0,001% of saturated pixel.

## Statistical methods

Statistical analyses were performed using R version 4.0.2 5 (R core team, 2018.). Principal component analyses were performed using the `prcomp()` function. Pearson's correlation analyses were performed using the `corr()` function within the `ggcorrplot` package. The variance of each variable was partitioned into components attributable to the genotypic (line) and year in interaction with block as additional factor using an analysis of variance (`aov()` function in the `agricolae` package). Adjusted means of the variables for the different lines across the two experiments were further calculated using the least-squares means `lsmeans()` function (`lsmeans` package).

### Data availability

Genomic data are available at the National Center for Biotechnology Information (NCBI). Genotyping (GBS) data are available in genbank under reference number PRJNA492967 (GWAS) and PRJNA769524 (BSA). RNAseq data are available in the Gene Expression Omnibus (GEO) under reference GSE185517.

Oxford Nanopore long reads are available on the European Nucleotide Archive (ENA) under reference ERR10627707.

Field trials data are available at Dryad under reference doi:10.5061/dryad.qv9s4mwk2.

### Source data legends

**Figure 4 source data. *ROXY19* and *EF1a* (control gene) expression detected by RT-qPCR in different *Arabidopsis* lines.** No *ROXY19* expression was detected in the *roxy19* mutant in contrast to the corresponding wild-type background.

## Acknowledgements

We dedicate this article to the memory of our colleague Yann Guédon (CIRAD). This work was supported by the French Institute for Sustainable Development (IRD), the French Ministry for Research and Higher Education (PhD grant to SP), the Agence National pour la Recherche (RootAdapt grant n° ANR-17-CE20-0022 to LL), the Agropolis Fondation (NewPearl grant n° AF 1301-015 in the frame of the CERES initiative and ValoRoot grant n°2202-002 to LL and Flagship Project CalClim grant no. 1802-002 to JPR) as part of the "Investissement d'avenir" (ANR-10-LABX-0001-01), under the frame of I-SITE MUSE (ANR-16-IDEX-0006), by the Fondazione Cariplo (n° FC 2013-0891) and by the CGIAR Research Programme on Grain Legumes and Dryland Cereals (GLDC). Financial support by the Access to Research Infrastructures activity in the Horizon 2020 Programme of the EU (EPPN2020 Grant Agreement 731013) is gratefully acknowledged. The authors acknowledge support from the iTrop High-performance computing platform (member of the South Green Platform) at IRD Montpellier.

## Competing interests

The authors declare no competing interests.

## References

- Altschul SF, Gish W, Miller W, Myers EW, Lipman DJ. 1990. Basic local alignment search tool. *J Mol Biol* **215**:403–410. doi:10.1016/S0022-2836(05)80360-2
- Anders S, Huber W. 2010. Differential expression analysis for sequence count data.

*Genome Biol* **11**:R106. doi:10.1186/gb-2010-11-10-r106 Cite

Andrews S. 2010. FastQC: a quality control tool for high throughput sequence data.

<http://www.bioinformatics.babraham.ac.uk/projects/fastqc>

Bashandy T, Guillemot J, Vernoux T, Caparros-Ruiz D, Ljung K, Meyer Y, Reichheld JP.

2010. Interplay between the NADP-linked thioredoxin and glutathione systems in

Arabidopsis auxin signaling. *Plant Cell* **22**:376–391. doi:10.1105/tpc.109.071225

Beemster GTS, Vusser K De, Tavernier E De, Bock K De, Inze D. 2002. Variation in

Growth Rate between Arabidopsis Ecotypes Is Correlated with Cell Division and A-Type Cyclin-Dependent Kinase Activity. *Plant Physiol* **129**:854–864.

doi:10.1104/pp.002923.854

Belin C, Bashandy T, Cela J, Delorme-Hinoux V, Riondet C, Reichheld JP. 2015. A

comprehensive study of thiol reduction gene expression under stress conditions in

Arabidopsis thaliana. *Plant, Cell Environ* **38**:299–314. doi:10.1111/pce.12276

Burgarella C, Cubry P, Kane NA, Varshney RK, Mariac C, Liu X, Shi C, Thudi M, Couderc M,

Xu X, Chitikineni A, Scarcelli N, Barnaud A, Rhoné B, Dupuy C, François O, Berthouly-

Salazar C, Vigouroux Y. 2018. A western Sahara centre of domestication inferred

from pearl millet genomes. *Nat Ecol Evol* **2**:1377–1380. doi:10.1038/s41559-018-0643-y

Caye K, Jumentier B, Lepeule J, François O. 2019. LFMM 2: Fast and accurate inference of

gene-environment associations in genome-wide studies. *Mol Biol Evol* **36**:852–860.

doi:10.1093/molbev/msz008



de la Fuente Cantó C, Diouf MN, Ndour PMS, Debieu M, Grondin A, Passot S, Champion A, Barrachina C, Pratlong M, Gantet P, Assigbetsé K, Kane N, Cubry P, Diedhiou AG, Heulin T, Achouak W, Vigouroux Y, Cournac L, Laplaze L. 2022. Genetic control of rhizosheath formation in pearl millet. *Sci Rep* **12**:9205. doi:10.1038/s41598-022-13234-w

de la Fuente Cantó C, Vigouroux Y. 2022. Evaluation of nine statistics to identify QTLs in bulk segregant analysis using next generation sequencing approaches. *BMC Genomics* **23**:490. doi:10.1186/s12864-022-08718-y

Debieu M, Kanfany G, Laplaze L. 2017. Pearl Millet Genome: Lessons from a Tough Crop. *Trends Plant Sci* **22**:911–913. doi:10.1016/j.tplants.2017.09.006

Debieu M, Sine B, Passot S, Grondin A, Akata E, Gangashetty P, Vadez V, Gantet P, Fonceka D, Cournac L, Hash CT, Kane N, Vigouroux Y, Laplaze L. 2018. Response to early drought stress and identification of QTLs controlling biomass production under drought in pearl millet. *PLoS One* **13**:e0201635. doi:10.1101/373233

Den Herder G, Van Isterdael G, Beeckman T, De Smet I. 2010. The roots of a new green revolution. *Trends Plant Sci* **15**:600–607. doi:10.1016/j.tplants.2010.08.009

Ferreira T, Miura K, Bitdeli C, Eglinger J. 2015. Scripts: Bar 1.1.6. Zenodo. doi:10.5281/ZENODO.28838

Flynn JM., Hubley R, Goubert C, Rosen J, Clark A. ., Feschotte C, Smit A. . 2020. RepeatModeler2 for automated genomic discovery of transposable element families. *Proc Natl Acad Sci* **117**:9451–9457. doi:10.1073/pnas.1921046117

- Frichot E, Schoville SD, Bouchard G, François O. 2013. Testing for associations between loci and environmental gradients using latent factor mixed models. *Mol Biol Evol* **30**:1687–1699. doi:10.1093/molbev/mst063
- Grondin A, Affortit P, Tranchant-Dubreuil C, Cantó C de la F, Mariac C, Gantet P, Vadez V, Vigouroux Y, Laplaze L. 2020. Aquaporins are main contributors of root hydraulic conductivity in pearl millet [*Pennisetum glaucum* (L) R. Br.]. *PLoS One* **15**:e0233481. doi:10.1101/2020.05.13.094094
- Hill JT, Demarest BL, Bisgrove BW, Gorski B, Su YC, Yost HJ. 2013. MMAPPR: Mutation Mapping Analysis Pipeline for Pooled RNA-seq. *Genome Res* **23**:687–697. doi:10.1101/gr.146936.112
- Hoagland D, Arnon D. 1950. The water-culture method for growing plants without soil. *Calif Agr Expt Sta Circ* **347**:1–32.
- Holt C, Yandell M. 2011. MAKER2: an annotation pipeline and genome-database management tool for second-generation genome projects. *BMC Bioinformatics* **12**:491. doi:10.1186/1471-2105-12-491
- Kang HM, Zaitlen NA, Wade CM, Kirby A, Heckerman D, Daly MJ, Eskin E. 2008. Efficient Control of Population Structure in Model Organism Association Mapping **1723**:1709–1723. doi:10.1534/genetics.107.080101
- Kim D, Langmead B, Salzberg SL. 2015. HISAT: a fast spliced aligner with low memory requirements. *Nat Methods* **12**:357–360. doi:10.1038/NMETH.3317
- Kurihara D, Mizuta Y, Sato Y, Higashiyama T. 2015. ClearSee: a rapid optical clearing

- reagent for whole-plant fluorescence imaging. *Development* **142**:4168–79.  
doi:10.1242/dev.127613
- Li H, Durbin R. 2009. Fast and accurate short read alignment with burrows-wheeler transform. *Bioinformatics* **25**:1754–1760. doi:10.1093/bioinformatics/btp324
- Love MI, Huber W, Anders S. 2014. Moderated estimation of fold change and dispersion for RNA-seq data with DESeq2. *Genome Biol* **15**. doi:10.1186/s13059-014-0550-8
- Lynch JP. 2019. Root phenotypes for improved nutrient capture: an underexploited opportunity for global agriculture. *New Phytol* **223**:548–564.  
doi:10.1111/nph.15738
- Lynch JP. 2007. Roots of the second green revolution. *Aust J Bot* **55**:493–512.  
doi:10.1071/BT06118
- Mabuchi K, Maki H, Itaya T, Suzuki T, Nomoto M, Sakaoka S, Morikami A, Higashiyama T, Tada Y, Busch W, Tsukagoshi H. 2018. MYB30 links ROS signaling, root cell elongation, and plant immune responses. *Proc Natl Acad Sci U S A* **115**:E4710–E4719. doi:10.1073/pnas.1804233115
- Marçais G, Delcher AL, Phillippy AM, Coston R, Salzberg SL, Zimin A. 2018. MUMmer4: A fast and versatile genome alignment system. *PLoS Comput Biol* **14**:e1005944.  
doi:10.1371/journal.pcbi.1005944
- Mariac C, Luong V, Kapran I, Mamadou A, Sagnard F, Deu M, Chantereau J, Gerard B, Ndjeunga J, Bezançon G, Pham JL, Vigouroux Y. 2006. Diversity of wild and cultivated pearl millet accessions (*Pennisetum glaucum* [L.] R. Br.) in Niger

assessed by microsatellite markers. *Theor Appl Genet* **114**:49–58.

doi:10.1007/s00122-006-0409-9

McCarthy DJ, Chen Y, Smyth GK. 2012. Differential expression analysis of multifactor RNA-Seq experiments with respect to biological variation. *Nucleic Acids Res* **40**:4288–4297. doi:10.1093/nar/gks042

McKenna A, Hanna M, Banks E, Sivachenko A, Cibulskis K, Kernytsky A, Garimella K, Altshuler D, Gabriel S, Daly M, DePristo MA. 2010. The Genome Analysis Toolkit: A MapReduce framework for analyzing next-generation DNA sequencing data. *Genome Res* **20**:1297–1303. doi:10.1101/gr.107524.110

Meyer Y, Belin C, Delorme-Hinoux, Valérie Reichheld, Jean-Philippe Riondet C. 2012. Thioredoxin and Glutaredoxin Systems in Plants: Molecular Mechanisms, Crosstalks, and Functional Significance. *Antioxid Redox Signal* **17**:1124–1160. doi:10.1089/ars.2011.4327

Meyer Y, Buchanan BB, Vignols F, Reichheld J-P. 2009. Thioredoxins and Glutaredoxins: Unifying Elements in Redox Biology. *Annu Rev Genet* **43**:335–367. doi:10.1146/annurev-genet-102108-134201

Morris AK, Silk WK. 1992. Use of a flexible logistic function to describe axial growth of plants. *Bull Math Biol* **54**:1069–1081.

Mounier T, Navarro-Sanz S, Bureau C, Antoine L, Varoquaux F, Durandet F, Périn C. 2020. A fast, efficient and high-throughput procedure involving laser microdissection and RT droplet digital PCR for tissue-specific expression profiling of rice roots. *BMC Mol*

- Mulder N, Apweiler R. 2007. InterPro and InterProScan: tools for protein sequence classification and comparison. *Methods Mol Biol* **396**:59–70.
- Ndoye MS, Burridge J, Bhosale R, Grondin A, Laplaze L. 2022. Root traits for low input agroecosystems in Africa: Lessons from three case studies. *Plant Cell Environ* **45**:637–649. doi:10.1111/pce.14256
- Olodo K., Barnaud A, Kane AK, Mariac C, Faye A, Couderc M, Zekraoui L, Dequincey A, Diouf D, Vigouroux Y, Berthouly-Salazar C. 2020. Abandonment of pearl millet cropping and homogenization of its diversity over a 40 year period in Senegal. *PLoS One* **15**:e0239123. doi:10.1371/journal.pone.0239123
- Omboki RB, Zheng Y, Chen Z, Guan H, Tang W, Huang L, Xie X, Wu W. 2018. Pooled mapping of quantitative trait loci conferring male sterility - conditioned glume split in rice ( *Oryza sativa* ). *Plant Breed* **137**:848–856. doi:10.1111/pbr.12643
- Ota R, Ohkubo Y, Yamashita Y, Ogawa-Ohnishi M, Matsubayashi Y. 2020. Shoot-to-root mobile CEPD-like 2 integrates shoot nitrogen status to systemically regulate nitrate uptake in Arabidopsis. *Nat Commun* **11**:1–9. doi:10.1038/s41467-020-14440-8
- Pašiaková M, Gajdoš V, Bučová J, Brixová B, Bielik M. 2013. NbClust: An R Package for Determining the Relevant Number of Clusters in a Data Set. *Acta Geol Slovaca* **5**:45–54.
- Passot S, Gnacko F, Moukouanga D, Lucas M, Guyomarc'h S, Ortega BM, Atkinson JA, Belko MN, Bennett MJ, Gantet P, Wells DM, Guédon Y, Vigouroux Y, Verdeil J-L,

- Muller B, Laplace L. 2016. Characterization of Pearl Millet Root Architecture and Anatomy Reveals Three Types of Lateral Roots. *Front Plant Sci* **7**:1–11.  
doi:10.3389/fpls.2016.00829
- Passot S, Moreno-Ortega B, Moukouanga D, Balsera C, Guyomarc'h S, Lucas M, Lobet G, Laplace L, Muller B, Guédon Y. 2018. A New Phenotyping Pipeline Reveals Three Types of Lateral Roots and a Random Branching Pattern in Two Cereals. *Plant Physiol* **177**:896–910. doi:10.1104/pp.17.01648
- Patterson K, Walters LA, Cooper AM, Olvera JG, Rosas MA, Rasmusson AG, Escobar MA. 2016. Nitrate-regulated glutaredoxins control arabidopsis primary root growth. *Plant Physiol* **170**:989–999. doi:10.1104/pp.15.01776
- Pertea M, Pertea GM, Antonescu CM, Chang T-C, Mendell JT, Salzberg SL. 2015. StringTie enables improved reconstruction of a transcriptome from RNA-seq reads. *Nat Biotechnol* **33**:290–295. doi:10.1038/nbt.3122
- Peter R, Eschholz TW, Stamp P, Liedgens M. 2009. Early growth of flint maize landraces under cool conditions. *Crop Sci* **49**:169–178. doi:10.2135/cropsci2007.10.0538
- Pound MP, French a. P, Atkinson J a., Wells DM, Bennett MJ, Pridmore T. 2013. RootNav: Navigating Images of Complex Root Architectures. *Plant Physiol* **162**:1802–1814.  
doi:10.1104/pp.113.221531
- Robinson MD, McCarthy DJ, Smyth GK. 2010. edgeR : a Bioconductor package for differential expression analysis of digital gene expression data. *Bioinformatics* **26**:139–140. doi:10.1093/bioinformatics/btp616

- Rohland N, Reich D. 2012. Cost-effective, high-throughput DNA sequencing libraries for multiplexed target capture. *Genome Res* **22**:939–946. doi:10.1101/gr.128124.111
- Soltani A, Madah V, Sinclair TR. 2013. SSM-Wheat: a simulation model for wheat development, growth and yield. *Int J Plant Prod* **7**:711–740.
- Soltani A, Sinclair TR. 2012. Modeling physiology of crop development, growth and yield, Modeling Physiology of Crop Development, Growth and Yield. doi:10.1079/9781845939700.0000
- Sultan B, Gaetani M. 2016. Agriculture in West Africa in the twenty-first century: Climate change and impacts scenarios, and potential for adaptation. *Front Plant Sci* **7**:1262. doi:10.3389/fpls.2016.01262
- Tarailo-Graovac M, Chen N. 2009. Using RepeatMasker to identify repetitive elements in genomic sequences. *Curr Protoc Bioinfo*. doi:10.1002/0471250953.bi0410s25
- R core Team. R: A Language and Environment for Statistical Computing. 2018. <https://www.r-project.org>
- Tranchant-Dubreuil C, Ravel S, Monat C, Sarah G, Diallo A, Helou L, A. D, N. T, Orjuela-Bounio J, Sabot F. 2018. TOGGLE, a flexible framework for easily building complex workflows and performing robust large-scale NGS analyses. *bioRxiv*. doi:https://doi.org/10.1101/245480
- Tsukagoshi H. 2016. Control of root growth and development by reactive oxygen species. *Curr Opin Plant Biol* **29**:57–63. doi:10.1016/j.pbi.2015.10.012

- Tsukagoshi H, Busch W, Benfey PN. 2010. Transcriptional regulation of ROS controls transition from proliferation to differentiation in the root. *Cell* **143**:606–616. doi:10.1016/j.cell.2010.10.020
- Uhrig JF, Huang LJ, Barghahn S, Willmer M, Thurow C, Gatz C. 2017. CC-type glutaredoxins recruit the transcriptional co-repressor TOPLESS to TGA-dependent target promoters in *Arabidopsis thaliana*. *Biochim Biophys Acta - Gene Regul Mech* **1860**:218–226. doi:10.1016/j.bbagr.2016.11.001
- Ursache R, Andersen TG, Marhavý P, Geldner N. 2018. A protocol for combining fluorescent proteins with histological stains for diverse cell wall components. *Plant J* **93**:399–412. doi:10.1111/tpj.13784
- van der Bom FJT, Williams A, Bell MJ. 2020. Root architecture for improved resource capture: Trade-offs in complex environments. *J Exp Bot* **71**:5752–5763. doi:10.1093/jxb/eraa324
- Varshney RK, Shi C, Thudi M, Mariac C, Wallace J, Qi P, Zhang H, Zhao Y, Wang X, Rathore A, Srivastava RK, Chitkineni A, Fan G, Bajaj P, Punhuri S, Gupta SK, Wang H, Jiang Y, Couderc M, Katta MAVSK, Paudel DR, Mungra KD, Chen W, Harris-Shultz KR, Garg V, Desai N, Doddamani D, Kane NA, Conner JA, Ghatak A, Chaturvedi P, Subramaniam S, Yadav OP, Berthouly-Salazar C, Hamidou F, Wang Jianping, Liang X, Clotault J, Upadhyaya HD, Cubry P, Rhoné B, Gueye MC, Sunkar R, Dupuy C, Sparvoli F, Cheng S, Mahala RS, Singh B, Yadav RS, Lyons E, Datta SK, Tom Hash C, Devos KM, Buckler E, Bennetzen JL, Paterson AH, Ozias-Akins P, Grando S, Wang Jun, Mohapatra T, Weckwerth W, Reif JC, Liu X, Vigouroux Y, Xu X. 2017. Pearl millet genome sequence provides a resource to improve agronomic traits in arid environments. *Nat*



*Biotechnol* **35**:969–976. doi:10.1038/nbt.3943

Vernoux T, Wilson RC, Seeley KA, Reichheld J, Muroy S, Brown S, Maughan SC, Cobbett

CS, Montagu M Van, Inzé D, May MJ, Sung ZR. 2000. The ROOT

MERISTEMLESS1/CADMIUM SENSITIVE2 gene defines a glutathione-dependent

pathway involved in initiation and maintenance of cell division during post-

embryonic root development. *Curr Opin Plant Biol* **3**:97–109. doi:10.1016/s1369-

5266(00)80035-7

Wang L, Jiao W, MacBean N, Rulli MC, Manzoni S, Vico G, D’Odorico P. 2022. Dryland

productivity under a changing climate. *Nat Clim Chang* **12**:981–994.

doi:10.1038/s41558-022-01499-y

Yu J, Pressoir G, Briggs WH, Vroh Bi I, Yamasaki M, J.F. D, McMullen MD, Gaut BS, Nielsen

DM, Holland JB, Kresovich S, Buckler ES. 2006. A unified mixed-model method for

association mapping that accounts for multiple levels of relatedness. *Nat Genet*

**38**:203–208.

Yuan Y, Bayer PE, Batley J, Edwards D. 2017. Improvements in Genomic Technologies:

Application to Crop Genomics. *Trends Biotechnol* **35**:547–558.

doi:10.1016/j.tibtech.2017.02.009

Zhang H, Wang X, Pan Q, Li P, Liu Yunjun, Lu X, Zhong W, Li M, Han L, Li J, Wang P, Li D,

Liu Yan, Li Q, Yang F, Zhang YM, Wang G, Li L. 2019. QTG-Seq Accelerates QTL Fine

Mapping through QTL Partitioning and Whole-Genome Sequencing of Bulk

Segregant Samples. *Mol Plant* **12**:426–437. doi:10.1016/j.molp.2018.12.018

1. Lynch JP. Roots of the second green revolution. *Aust J Bot.* 2007;55:493–512.
2. Lynch JP. Root phenotypes for improved nutrient capture: an underexploited opportunity for global agriculture. *New Phytol.* 2019;223:548–64.
3. Den Herder G, Van Isterdael G, Beeckman T, De Smet I. The roots of a new green revolution. *Trends Plant Sci.* 2010;15:600–7.
4. Topp CN, Bray AL, Ellis NA, Liu Z. How can we harness quantitative genetic variation in crop root systems for agricultural improvement? *J Integr Plant Biol.* 2016;58:213–25.
5. Ndoye MS, Burrridge J, Bhosale R, Grondin A, Laplaze L. Root traits for low input agroecosystems in Africa: Lessons from three case studies. *Plant Cell Environ.* 2022;45:637–49.
6. Peter R, Eschholz TW, Stamp P, Liedgens M. Early growth of flint maize landraces under cool conditions. *Crop Sci.* 2009;49:169–78.
7. Passot S, Gnacko F, Moukouanga D, Lucas M, Guyomarc'h S, Ortega BM, et al. Characterization of Pearl Millet Root Architecture and Anatomy Reveals Three Types of Lateral Roots. *Front Plant Sci.* 2016;7 June:1–11. doi:10.3389/fpls.2016.00829.
8. Pašiaková M, Gajdoš V, Bučová J, Brixová B, Bielik M. NbClust: An R Package for Determining the Relevant Number of Clusters in a Data Set. *Acta Geol Slovaca.* 2013;5:45–54.
9. Debieu M, Sine B, Passot S, Grondin A, Akata E, Gangashetty P, et al. Response to early

drought stress and identification of QTLs controlling biomass production under drought in pearl millet. PLoS One. 2018;13:e0201635. doi:10.1101/373233.

10. de la Fuente Cantó C, Diouf MN, Ndour PMS, Debieu M, Grondin A, Passot S, et al. Genetic control of rhizosheath formation in pearl millet. Sci Rep. 2022;12:9205. doi:10.1038/s41598-022-13234-w.

11. Caye K, Jumentier B, Lepeule J, François O. LFMM 2: Fast and accurate inference of gene-environment associations in genome-wide studies. Mol Biol Evol. 2019;36:852–60.

12. de la Fuente Cantó C, Vigouroux Y. Evaluation of nine statistics to identify QTLs in bulk segregant analysis using next generation sequencing approaches. BMC Genomics. 2022;23:490.

13. Varshney RK, Shi C, Thudi M, Mariac C, Wallace J, Qi P, et al. Pearl millet genome sequence provides a resource to improve agronomic traits in arid environments. Nat Biotechnol. 2017;35:969–76.

14. Yuan Y, Bayer PE, Batley J, Edwards D. Improvements in Genomic Technologies: Application to Crop Genomics. Trends Biotechnol. 2017;35:547–58. doi:10.1016/j.tibtech.2017.02.009.

15. Meyer Y, Buchanan BB, Vignols F, Reichheld J-P. Thioredoxins and Glutaredoxins: Unifying Elements in Redox Biology. Annu Rev Genet. 2009;43:335–67.

16. Meyer Y, Belin C, Delorme-Hinoux, Valérie Reichheld, Jean-Philippe Riondet C. Thioredoxin and Glutaredoxin Systems in Plants: Molecular Mechanisms, Crosstalks, and Functional Significance. Antioxid Redox Signal. 2012;17:1124–60.

17. Uhrig JF, Huang LJ, Barghahn S, Willmer M, Thurow C, Gatz C. CC-type glutaredoxins recruit the transcriptional co-repressor TOPLESS to TGA-dependent target promoters in *Arabidopsis thaliana*. *Biochim Biophys Acta - Gene Regul Mech*. 2017;1860:218–26. doi:10.1016/j.bbagr.2016.11.001.
18. Belin C, Bashandy T, Cela J, Delorme-Hinoux V, Riondet C, Reichheld JP. A comprehensive study of thiol reduction gene expression under stress conditions in *Arabidopsis thaliana*. *Plant, Cell Environ*. 2015;38:299–314.
19. Huang LJ, Li N, Thurow C, Wirtz M, Hell R, Gatz C. Ectopically expressed glutaredoxin ROXY19 negatively regulates the detoxification pathway in *Arabidopsis thaliana*. *BMC Plant Biol*. 2016;16:200. doi:10.1186/s12870-016-0886-1.
20. Soltani A, Sinclair TR. Modeling physiology of crop development, growth and yield. 2012.
21. Soltani A, Madah V, Sinclair TR. SSM-Wheat: a simulation model for wheat development, growth and yield. *Int J Plant Prod*. 2013;7:711–740.
22. Pound MP, French a. P, Atkinson J a., Wells DM, Bennett MJ, Pridmore T. RootNav: Navigating Images of Complex Root Architectures. *Plant Physiol*. 2013;162:1802–14. doi:10.1104/pp.113.221531.
23. Passot S, Moreno-Ortega B, Moukouanga D, Balsera C, Guyomarc'h S, Lucas M, et al. A New Phenotyping Pipeline Reveals Three Types of Lateral Roots and a Random Branching Pattern in Two Cereals. *Plant Physiol*. 2018;177:896–910. doi:10.1104/pp.17.01648.

24. Kang HM, Zaitlen NA, Wade CM, Kirby A, Heckerman D, Daly MJ, et al. Efficient Control of Population Structure in Model Organism Association Mapping. 2008;1723 March:1709–23.
25. Yu J, Pressoir G, Briggs WH, Vroh Bi I, Yamasaki M, J.F. D, et al. A unified mixed-model method for association mapping that accounts for multiple levels of relatedness. Nat Genet. 2006;38:203–8.
26. Frichot E, Schoville SD, Bouchard G, François O. Testing for associations between loci and environmental gradients using latent factor mixed models. Mol Biol Evol. 2013;30:1687–99.
27. Mariac C, Luong V, Kapran I, Mamadou A, Sagnard F, Deu M, et al. Diversity of wild and cultivated pearl millet accessions (*Pennisetum glaucum* [L.] R. Br.) in Niger assessed by microsatellite markers. Theor Appl Genet. 2006;114:49–58.
28. Rohland N, Reich D. Cost-effective, high-throughput DNA sequencing libraries for multiplexed target capture. Genome Res. 2012;22:939–946.
29. Andrews S. FastQC: a quality control tool for high throughput sequence data. 2010. <http://www.bioinformatics.babraham.ac.uk/projects/fastqc>.
30. Li H, Durbin R. Fast and accurate short read alignment with burrows-wheeler transform. Bioinformatics. 2009;25:1754–1760.
31. McKenna A, Hanna M, Banks E, Sivachenko A, Cibulskis K, Kernytsky A, et al. The Genome Analysis Toolkit: A MapReduce framework for analyzing next-generation DNA sequencing data. Genome Res. 2010;20:1297–303.

32. Hill JT, Demarest BL, Bisgrove BW, Gorski B, Su YC, Yost HJ. MMAPPR: Mutation Mapping Analysis Pipeline for Pooled RNA-seq. *Genome Res.* 2013;23:687–97.
33. Omboki RB, Zheng Y, Chen Z, Guan H, Tang W, Huang L, et al. Pooled mapping of quantitative trait loci conferring male sterility - conditioned glume split in rice (*Oryza sativa*). *Plant Breed.* 2018;137:848–56.
34. Zhang H, Wang X, Pan Q, Li P, Liu Y, Lu X, et al. QTG-Seq Accelerates QTL Fine Mapping through QTL Partitioning and Whole-Genome Sequencing of Bulk Segregant Samples. *Mol Plant.* 2019;12:426–37. doi:10.1016/j.molp.2018.12.018.
35. Robinson MD, McCarthy DJ, Smyth GK. edgeR : a Bioconductor package for differential expression analysis of digital gene expression data. *Bioinformatics.* 2010;26:139–40.
36. McCarthy DJ, Chen Y, Smyth GK. Differential expression analysis of multifactor RNA-Seq experiments with respect to biological variation. *Nucleic Acids Res.* 2012;40:4288–97.
37. Anders S, Huber W. Differential expression analysis for sequence count data. *Genome Biol.* 2010;11:R106.
38. Love MI, Huber W, Anders S. Moderated estimation of fold change and dispersion for RNA-seq data with DESeq2. *Genome Biol.* 2014;15.
39. Hoagland DR, Arnon DI. The water-culture method for growing plants without soil. Berkeley, CA, USA: University of California, College of Agriculture, Agricultural Experiment Station.; 1950.

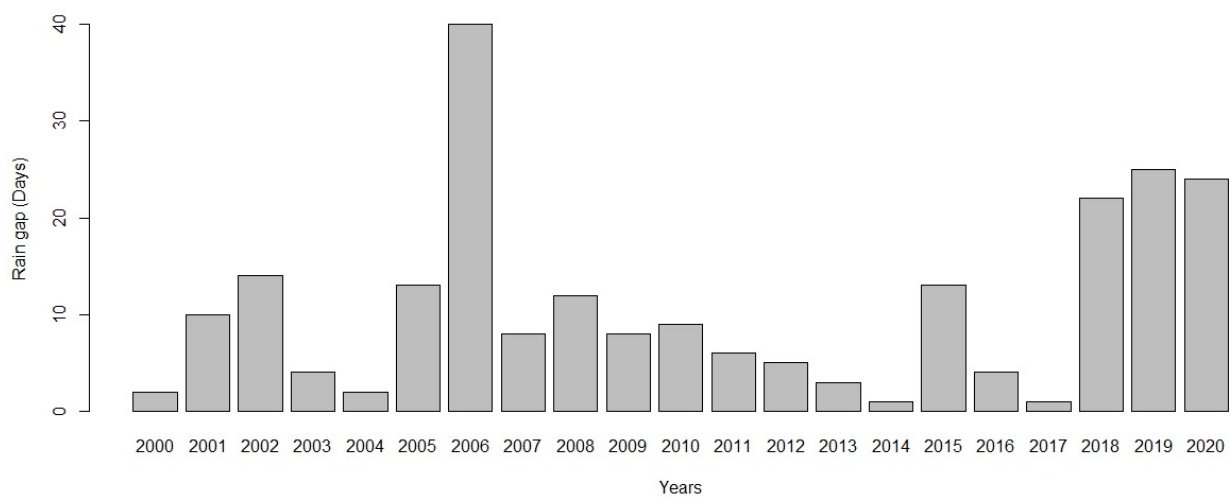
40. Kurihara D, Mizuta Y, Sato Y, Higashiyama T. ClearSee: a rapid optical clearing reagent for whole-plant fluorescence imaging. *Development*. 2015;142:4168–79. doi:10.1242/dev.127613.
41. Ursache R, Andersen TG, Marhavý P, Geldner N. A protocol for combining fluorescent proteins with histological stains for diverse cell wall components. *Plant J*. 2018;93:399–412.
42. Ferreira T, Miura K, Bitdeli C, Eglinger J. Scripts: Bar 1.1.6. Zenodo. 2015.
43. Morris AK, Silk WK. Use of a flexible logistic function to describe axial growth of plants. *Bull Math Biol*. 1992;54:1069–81.
44. Beemster GTS, Vusser K De, Tavernier E De, Bock K De, Inze D. Variation in Growth Rate between Arabidopsis Ecotypes Is Correlated with Cell Division and A-Type Cyclin-Dependent Kinase Activity. *Plant Physiol*. 2002;129 June:854–64.
45. Grondin A, Affortit P, Tranchant-Dubreuil C, Cantó C de la F, Mariac C, Gantet P, et al. Aquaporins are main contributors of root hydraulic conductivity in pearl millet [*Pennisetum glaucum* (L) R. Br.]. *PLoS One*. 2020; L:2020.05.13.094094.
46. Marçais G, Delcher AL, Phillippy AM, Coston R, Salzberg SL, Zimin A. MUMmer4: A fast and versatile genome alignment system. *PLoS Comput Biol*. 2018;14:e1005944.
47. Flynn JM., Hubley R, Goubert C, Rosen J, Clark A. , Feschotte C, et al. RepeatModeler2 for automated genomic discovery of transposable element families. *Proc Natl Acad Sci*. 2020;117:9451–7.

48. Tarailo-Graovac M, Chen N. Using RepeatMasker to identify repetitive elements in genomic sequences. *Curr Protoc Bioinfo.* 2009;Chapter 4:
49. Holt C, Yandell M. MAKER2: an annotation pipeline and genome-database management tool for second-generation genome projects. *BMC Bioinformatics.* 2011;12:491.
50. Tranchant-Dubreuil C, Ravel S, Monat C, Sarah G, Diallo A, Helou L, et al. TOGGLE, a flexible framework for easily building complex workflows and performing robust large-scale NGS analyses. *bioRxiv.* 2018.
51. Kim D, Langmead B, Salzberg SL. HISAT: a fast spliced aligner with low memory requirements. *Nat Methods.* 2015;12:357–360.
52. Pertea M, Pertea GM, Antonescu CM, Chang T-C, Mendell JT, Salzberg SL. StringTie enables improved reconstruction of a transcriptome from RNA-seq reads. *Nat Biotechnol.* 2015;33:290–295.
53. Altschul SF, Gish W, Miller W, Myers EW, Lipman DJ. Basic local alignment search tool. *J Mol Biol.* 1990;215:403–10.
54. Mulder N, Apweiler R. InterPro and InterProScan: tools for protein sequence classification and comparison. *Methods Mol Biol.* 2007;396:59–70.
55. Mounier T, Navarro-Sanz S, Bureau C, Antoine L, Varoquaux F, Durandet F, et al. A fast, efficient and high-throughput procedure involving laser microdissection and RT droplet digital PCR for tissue-specific expression profiling of rice roots. *BMC Mol Cell Biol.* 2020;21:92.

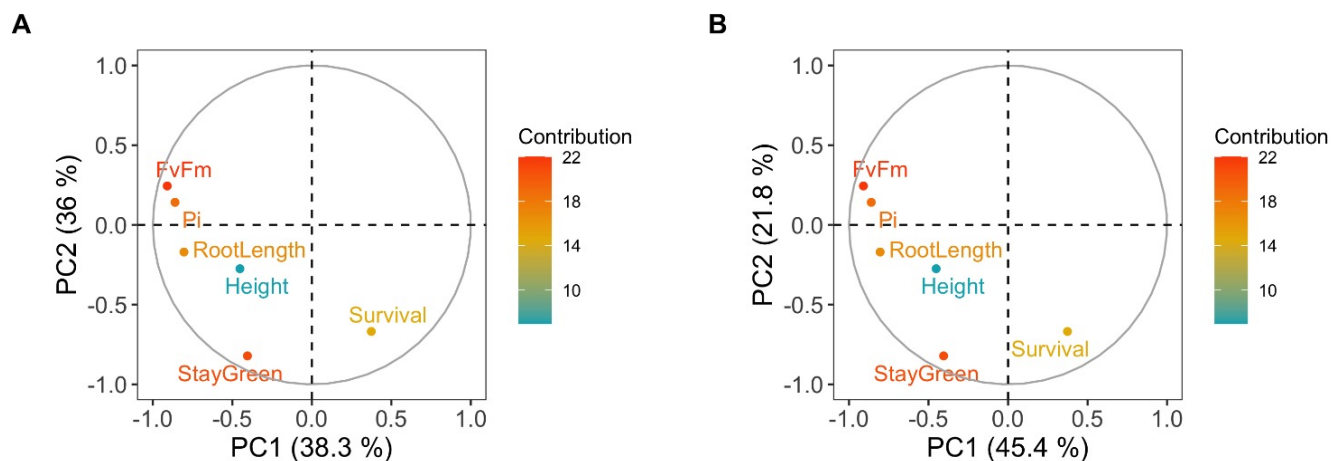


56. 2018 R core team. R: A Language and Environment for Statistical Computing.

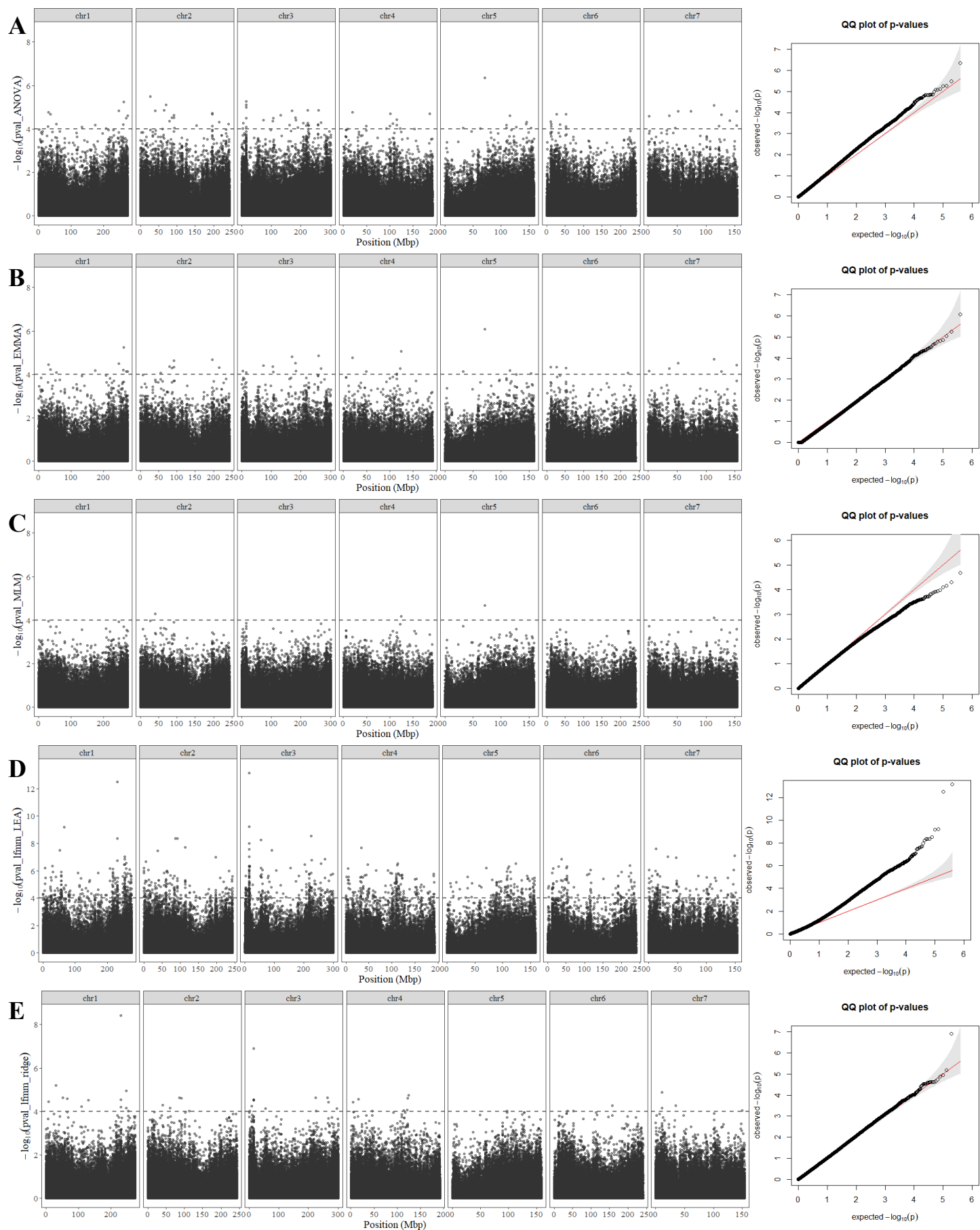
<https://www.r-project.org>.



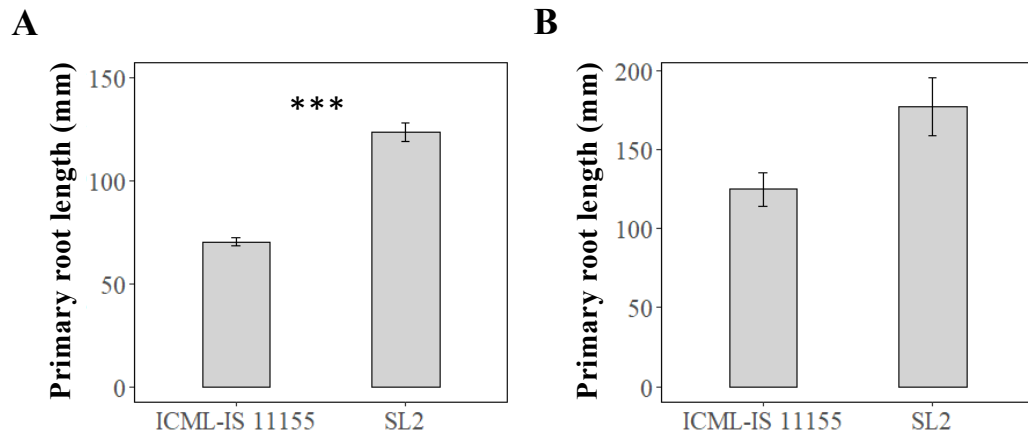
**Supplementary Figure 1. Lapse between the first and the second significant rainfall.** Significant rainfall was considered as more than 10 mm rainfall per day. Data from the Bambey experimental station.



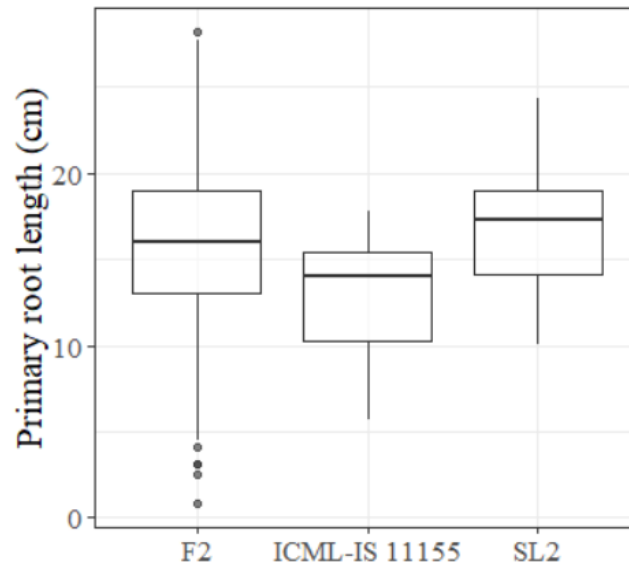
**Supplementary Figure 2. Covariation of root length, plant height and drought related traits including maximum quantum efficiency of photosystem II (FvFm) and performance index of photosynthesis (PI) measured at 32 days after sowing, and stay-green and plant survival measured at 42 days after sowing.** Mean values measured in 2018 (A) and 2020 (B) field trials were used for Principal Component Analysis (PCA). The contribution of each PCA axis (PC1 and PC2) is indicated on the graph.



**Figure S3. GWAS Manhattan plot and  $p$ -values QQ plots obtained with five methods.** (A) Analysis of variance or ANOVA, (B) Efficient Mixed Model Association or EMMA, (C) Mixed linear model or MLM, (D) Latent Factor Mixed Model using an stochastic algorithm (MCMC) ,or LFMM\_LEA, (E) Latent Factor Mixed Model using the ridge algorithm or LFMM\_ridge.

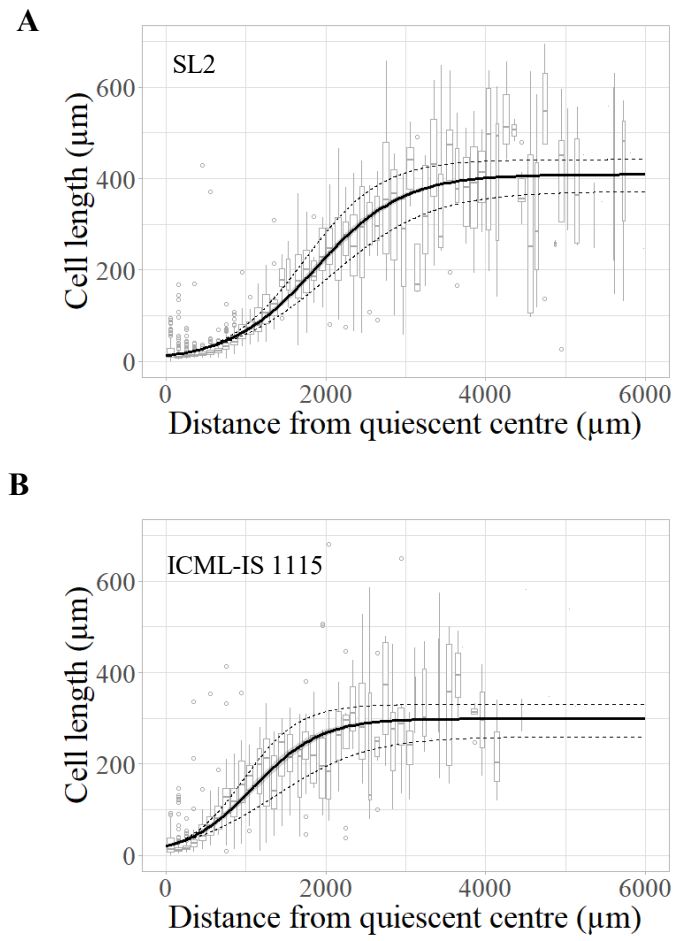


**Figure S4. Contrasted primary root length of lines ICML-IS 11155 and SL2.** (A) on paper roll 7 days after germination ( $N_{\text{ICML-IS 11155}} = 32$ ,  $N_{\text{SL2}} = 34$ ) and (B) soil column using by X-ray tomography 10 days after germination ( $N_{\text{ICML-IS 11155}} = 4$ ,  $N_{\text{SL2}} = 5$ ,  $P\text{-value} = 0.058$ ).

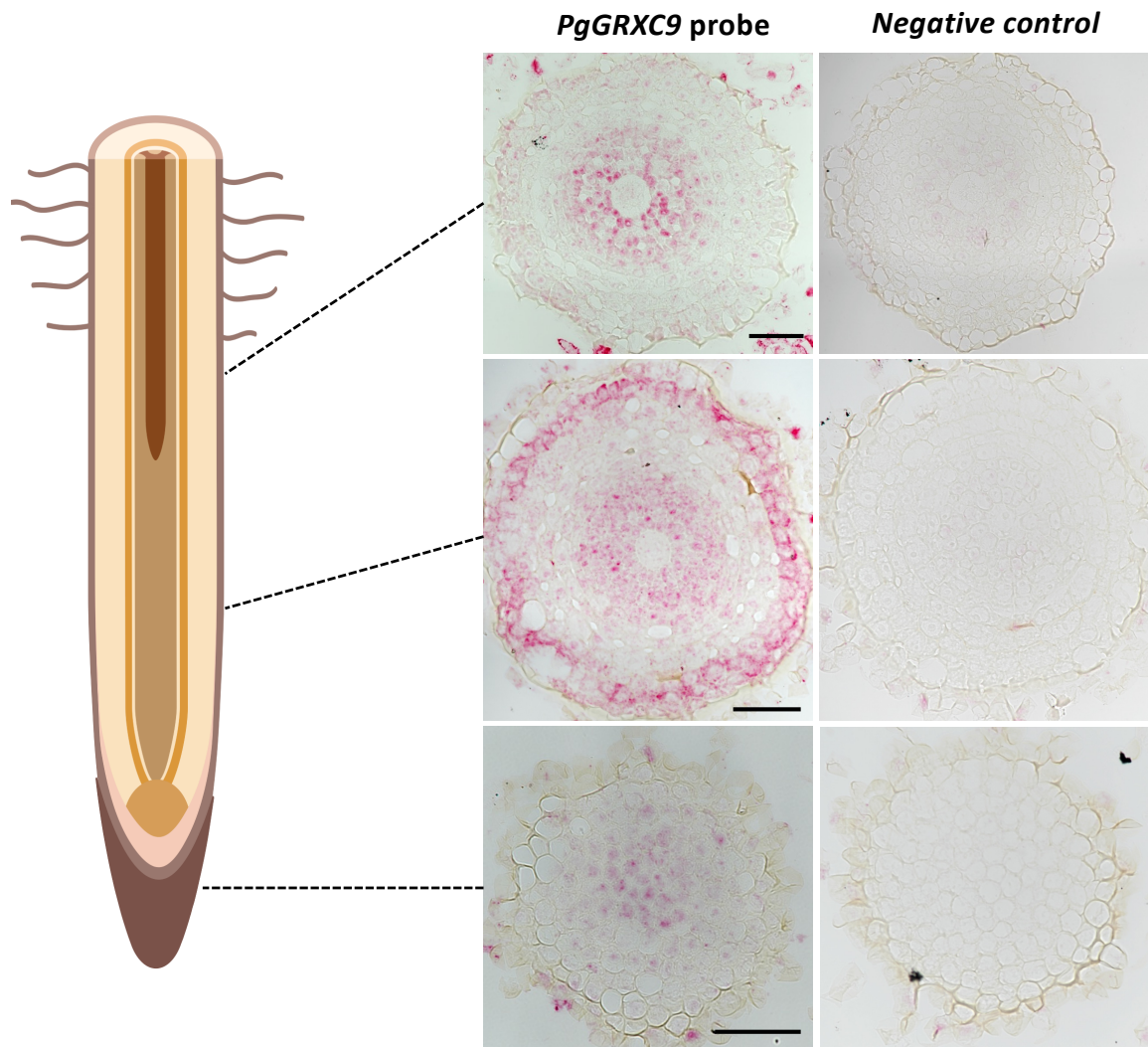
**A****B**

	F2s	ICML-IS 11155	SL2
Number of individuals	737	33	30
RL Mean (cm) $\pm$ SE	15.98 $\pm$ 0.17	13 $\pm$ 0.52	16.74 $\pm$ 0.68
RL Min – Max (cm)	0.81 - 28.26	5.71 – 17.83	10.07 – 24.37

**Figure S5. Distribution phenotypes F2 and parents ICML-IS 11155 and SL2.** (A) Distribution of the phenotype parents vs F2 (histogram or boxplot). (B) Table of averages.



**Figure S6. Cell length profile in the root meristem of (A) SL2 and (B) ICML-IS 11155.**



**Figure S7. Expression pattern of *PgGRXC9* in the root tip as revealed by RNAscope.** Transversal sections in the root cap, elongation zone and mature zone of the root. Scalebars: 50 μm. Drawing created with BioRender.com



[illegible][illegible]

**Figure S8. Protein alignment of PgGRXC9 and Arabidopsis ROXY members.** (A) Whole sequence alignment of PgGRXC9 and the 21 ROXY from *Arabidopsis thaliana*. The first 120 N-terminal amino acids of PgGRXC9 are not represented in this alignment. (B) C-terminus alignment of ROXY proteins. This alignment displays the L\*\*LL (orange) and the ALWL (light blue) C-terminal motifs, important for binding to TGA and TPL/TPR. The green bar and purple triangle mark the ROXY18-21 Arabidopsis subclass and the PgGRXC9, respectively.

**Table S1. Drought-tolerance related traits in selected inbred lines grown in field conditions in 2018 and 2020.** After sowing, seeds were irrigated with 30 mm of water to allow germination and plants grew for 42 days without any further irrigation. Plant height, stay-green and survival were measured at 42 days after sowing while photosynthesis related traits (FvFm: maximum quantum efficiency of photosystem II; PI: performance index of photosynthesis) were measured at 32 days after sowing. Root length was measured 6 days after germination on a paper-based hydroponic system in growth chamber. Numbers indicate mean  $\pm$  se.

	Line	Height (cm)	Stay-Green (%)	Survival (%)	FvFm	PI	Root length (mm)
2018	1	16.33 $\pm$ 2.62	39.37 $\pm$ 2.43	28.67 $\pm$ 14.76	0.76 $\pm$ 0.03	0.82 $\pm$ 0.04	61.05 $\pm$ 20.12
	69	23.88 $\pm$ 7.25	40.97 $\pm$ 6.52	10.48 $\pm$ 5.50	0.64 $\pm$ 0.19	0.99 $\pm$ 0.04	75.65 $\pm$ 21.39
	127	17.11 $\pm$ 2.97	40.80 $\pm$ 4.29	37.83 $\pm$ 15.58	0.69 $\pm$ 0.00	0.95 $\pm$ 0.08	74.53 $\pm$ 16.13
	241	21.97 $\pm$ 0.90	41.18 $\pm$ 3.40	23.35 $\pm$ 18.57	0.73 $\pm$ 0.03	0.95 $\pm$ 0.26	
	249	17.35 $\pm$ 4.98	38.36 $\pm$ 8.38	28.29 $\pm$ 17.29	0.76 $\pm$ 0.02	1.25 $\pm$ 0.27	66.35 $\pm$ 14.60
	263	41.37 $\pm$ 5.41	35.61 $\pm$ 2.67	58.94 $\pm$ 21.17	0.76 $\pm$ 0.01	1.07 $\pm$ 0.07	107.21 $\pm$ 10.89
	337	27.94 $\pm$ 5.57	43.37 $\pm$ 6.29	47.23 $\pm$ 13.94	0.77 $\pm$ 0.01	1.33 $\pm$ 0.20	149.30 $\pm$ 10.04
	343	35.10 $\pm$ 6.65	40.40 $\pm$ 1.03	22.53 $\pm$ 13.75	0.77 $\pm$ 0.01	1.16 $\pm$ 0.27	79.91 $\pm$ 20.59
	344	26.69 $\pm$ 5.90	46.21 $\pm$ 9.23	31.48 $\pm$ 11.94	0.70 $\pm$ 0.08	1.32 $\pm$ 0.30	167.57 $\pm$ 12.92
2020	3	28.67 $\pm$ 5.75	60.87 $\pm$ 4.66	64.48 $\pm$ 9.21	0.74 $\pm$ 0.01	2.95 $\pm$ 0.55	58.94
	55	31.54 $\pm$ 8.64	56.53 $\pm$ 7.22	58.07 $\pm$ 13.18	0.74 $\pm$ 0.02	3.97 $\pm$ 0.79	61.21 $\pm$ 12.75
	69	19.58 $\pm$ 4.14	51.92 $\pm$ 7.28	76.11 $\pm$ 18.93	0.73 $\pm$ 0.01	3.21 $\pm$ 0.33	75.65 $\pm$ 21.39
	81	24.28 $\pm$ 1.37	54.20 $\pm$ 9.02	41.40 $\pm$ 8.83	0.76 $\pm$ 0.01	4.55 $\pm$ 1.29	136.53 $\pm$ 21.19
	132	28.67 $\pm$ 2.23	56.15 $\pm$ 2.01	66.93 $\pm$ 5.03	0.72 $\pm$ 0.02	3.34 $\pm$ 0.22	68.70 $\pm$ 12.99
	249	19.83 $\pm$ 4.09	56.08 $\pm$ 6.79	70.43 $\pm$ 18.91	0.72 $\pm$ 0.03	2.85 $\pm$ 1.12	66.35 $\pm$ 14.60
	263	24.42 $\pm$ 4.31	61.88 $\pm$ 4.94	70.83 $\pm$ 15.35	0.74 $\pm$ 0.01	4.04 $\pm$ 0.56	107.21 $\pm$ 10.89
	337	30.63 $\pm$ 4.54	61.65 $\pm$ 2.70	59.53 $\pm$ 10.56	0.74 $\pm$ 0.01	3.44 $\pm$ 0.27	149.30 $\pm$ 10.04
	343	30.67 $\pm$ 6.38	56.27 $\pm$ 4.95	58.75 $\pm$ 4.93	0.74 $\pm$ 0.01	3.68 $\pm$ 0.67	79.91 $\pm$ 20.59
	344	27.42 $\pm$ 4.06	60.18 $\pm$ 4.10	81.51 $\pm$ 14.29	0.75 $\pm$ 0.01	4.76 $\pm$ 0.51	167.57 $\pm$ 12.92
<i>p-values</i>	<i>Line</i>	*	0.84	0.64	0.54	0.29	***
	<i>Year</i>	0.31	***	***	0.86	***	0.73
	<i>Line x Year</i>	0.27	0.88	0.28	0.34	0.28	0.98
<i>lsmeans</i>	69	21.8	46	43.3	0.693	2.19	75.7
	249	18.6	47.2	49.4	0.741	2.05	66.3
	263	33.1	49.3	64.9	0.755	2.58	107.2
	337	29.3	52.5	53.4	0.754	2.36	149.3
	343	32.9	49.1	40.6	0.759	2.52	79.9
	344	27.1	53.2	56.5	0.729	3.04	167.6

**Table S2. GWAS *p*-values for the significant SNP markers identified through LFMM (ridge) using four other GWAS methods**

Chr.	Position (Mbp)	Allele Freq REF	Allele Freq ALT	GWAS <i>p</i> -values <sup>1</sup>				
				ANOVA	EMMA	MLM	LFMM (LEA)	LFMM (ridge)
1	7.848	0.828	0.172	ns	ns	ns	***	***
1	30.561	0.910	0.090	***	***	**	**	***
1	52.188	0.730	0.270	**	**	**	***	***
1	65.933	0.475	0.525	ns	ns	ns	***	***
1	109.737	0.893	0.107	*	*	*	**	***
1	130.348	0.934	0.066	*	*	*	**	***
1	231.244	0.754	0.246	*	*	*	***	***
1	231.246	0.672	0.328	*	*	*	***	***
1	231.265	0.295	0.705	*	ns	*	***	***
1	247.636	0.836	0.164	***	***	**	***	***
1	247.637	0.852	0.148	**	**	**	***	***
1	253.567	0.648	0.352	**	*	*	***	***
2	40.574	0.164	0.836	***	ns	***	***	***
2	60.654	0.926	0.074	**	**	**	*	***
2	85.902	0.656	0.344	***	***	**	***	***
2	92.005	0.689	0.311	*	*	ns	***	***
2	113.747	0.631	0.369	*	*	*	***	***
3	1.657	0.934	0.066	**	*	*	*	***
3	8.847	0.951	0.049	**	**	**	ns	***
3	14.107	0.484	0.516	***	ns	**	***	***
3	14.107	0.459	0.541	**	ns	**	***	***
3	14.124	0.254	0.746	***	ns	**	***	***
3	14.192	0.164	0.836	ns	ns	ns	***	***
3	14.602	0.672	0.328	**	*	*	***	***
3	53.909	0.566	0.434	**	**	*	***	***
3	224.557	0.443	0.557	***	ns	*	***	***
3	225.059	0.762	0.238	*	*	ns	***	***
3	264.082	0.934	0.066	*	*	*	*	***
3	267.439	0.918	0.082	***	***	**	**	***
3	294.825	0.041	0.959	**	ns	**	ns	***
4	4.566	0.230	0.770	**	ns	*	***	***
4	16.258	0.861	0.139	ns	ns	ns	***	***
4	45.631	0.869	0.131	*	**	**	**	***
4	113.503	0.770	0.230	*	**	*	***	***
4	121.206	0.787	0.213	*	**	**	***	***
4	122.223	0.820	0.180	***	***	**	***	***
4	124.508	0.893	0.107	**	***	***	**	***
5	97.383	0.836	0.164	*	*	*	***	***
6	36.876	0.713	0.287	***	**	**	***	***
6	52.098	0.713	0.287	***	***	**	***	***
6	157.606	0.082	0.918	*	ns	ns	**	***
7	10.770	0.787	0.213	ns	*	*	***	***
7	10.819	0.918	0.082	**	**	*	**	***
7	34.533	0.967	0.033	*	*	*	ns	***
7	149.890	0.697	0.303	**	**	*	***	***

<sup>1</sup> Analysis of variance (ANOVA), Efficient Mixed Model Analysis (EMMA), Mixed Linear Model (MLM) and Latent Factor Mixed Model using the algorithm MCMC (LFMM LEA). \*\*\* *P*-value  $\leq 0.0001$ , \*\* *P*-value  $\leq 0.001$ , \* *P*-value  $\leq 0.01$ , *ns* not significant

**Table S3.** Significant genomic regions identified by Bulk Segregant Analysis (BSA) for primary root length at the 95% confidence interval.

	Chr.	Peak position <sup>1</sup> (Mbp)	Region range <sup>2</sup> (Mbp)	Region length (Mbp)	Number sig SNPs
<i>RL1.1</i>	1	52.57	31.21 – 60.57	29.36	7
<i>RL1.2</i>	1	176.47	165.42 – 195.36	29.94	71
<i>RL1.3</i>	1	215.85	196.38 – 239.10	42.72	185
<i>RL6.1</i>	6	89.99	4.55 – 101.68	97.13	695
<i>RL6.2</i>	6	116.91	108.03 – 125.64	17.61	37
<i>RL6.3</i>	6	201.08	176.52 – 240.48	65.79	290

<sup>1</sup> Position of the most significant SNP in the region range

<sup>2</sup> Limits of the significant region considering the overlapping confidence interval of significant markers in the region

**Table S4.** Common GWAS and BSA Marker trait associations for primary root length.

Chr.	Position (Mbp)	Allele Freq REF	Allele Freq ALT	GWAS -log <sub>10</sub> ( <i>pvalue</i> )	BSA sig region (95% CI)
1	52.188	0.730	0.270	4.623	<i>RL1.1</i>
1	231.244	0.754	0.246	4.200	
1	231.246	0.672	0.328	4.531	<i>RL1.3</i>
1	231.265	0.295	0.705	8.413	
6	36.876	0.713	0.287	4.020	
6	52.098	0.713	0.287	4.018	<i>RL6.1</i>

**Table S5. Top ten GO enriched terms in the differentially expressed genes between contrasting lines for root growth.** Annotated: number of genes annotated with the corresponding GO term in the pearl millet genome; Significant: number of genes annotated in the differentially expressed genes with the corresponding GO term; Expected: number of corresponding GO term expected in the differentially expressed genes; Rank: rank of p-value in the classic Fisher test; p-value: p-value of the classic Fischer test; Weight01: weight01 in the Fischer test taking into account hierarchical links between GO terms.

GO term	Annotation	Ontology	Annotated	Significant	Expected	Rank	p-value	Weight01
GO:0043531	ADP binding	Molecular interaction	357	82	22.24	1	8.10E-26	8.10E-26
GO:0009045	xylose isomerase activity	Enzymatic reactions	5	3	0.31	13	0.0022	0.0022
GO:0005230	extracellular ligand-gated ion channel activity	Transporters	17	4	1.06	26	0.0185	0.0039
GO:0004497	monooxygenase activity	Enzymatic reactions	69	10	4.3	21	0.01	0.0055
GO:0004930	G protein-coupled receptor activity	Signal transduction	7	3	0.44	17	0.007	0.007
GO:0016765	transferase activity, transferring alkyl or aryl groups	Enzymatic reactions	46	8	2.87	16	0.0069	0.0079
GO:0046873	metal ion transmembrane transporter activity	Transporters	91	10	5.67	55	0.0563	0.0094
GO:0030170	pyridoxal phosphate binding	Molecular interaction	112	14	6.98	19	0.0097	0.0097
GO:0042626	ATPase activity, coupled to transmembrane	Transporters	134	14	8.35	46	0.0396	0.0103
GO:0016841	ammonia-lyase activity	Enzymatic reactions	9	3	0.56	23	0.0152	0.0152

**Table S6. Lines selected for field trials.** Average root length represent the value observed in paper growth system in the original phenotyping performed for GWAS/

Line	Average Root Growth
ICML-IS 11001	61.05
ICML-IS 11002	59.94
ICML-IS 11047	75.65
ICML-IS 11108	172.18
ICML-IS 11155	66.35
ICML-IS 11165	107.21
SL 2	149.3
SL 4	79.91
SL 5	167.57