



**HAL**  
open science

## Investigating the use of grain-oriented electrical steel in axial-flux switched reluctance machines

Racha Aydoun, Guillaume Parent, J. Lecointe, A. M. Tounzi

► **To cite this version:**

Racha Aydoun, Guillaume Parent, J. Lecointe, A. M. Tounzi. Investigating the use of grain-oriented electrical steel in axial-flux switched reluctance machines. XXV Symposium Electromagnetic Phenomena in Nonlinear Circuits (EPNC), Jun 2018, Arras, France. hal-04114198

**HAL Id: hal-04114198**

**<https://hal.science/hal-04114198>**

Submitted on 5 Jun 2023

**HAL** is a multi-disciplinary open access archive for the deposit and dissemination of scientific research documents, whether they are published or not. The documents may come from teaching and research institutions in France or abroad, or from public or private research centers.

L'archive ouverte pluridisciplinaire **HAL**, est destinée au dépôt et à la diffusion de documents scientifiques de niveau recherche, publiés ou non, émanant des établissements d'enseignement et de recherche français ou étrangers, des laboratoires publics ou privés.

# Investigating the use of grain-oriented electrical steel in axial flux switched reluctance machines

Racha Aydoun<sup>1</sup>, Guillaume Parent<sup>1</sup>, Jean-Philippe Lecointe<sup>1</sup> and Abdelmounaïm Tounzi<sup>2</sup>

<sup>1</sup>*Univ. Artois, Laboratoire Systèmes Electrotechniques et Environnement (LSEE),  
F-62400, Béthune, France*

<sup>2</sup>*Univ. Lille 1, Laboratoire d'Electrotechnique et d'Electronique de Puissance de Lille (L2EP),  
F-59655, Villeneuve d'Asq, France*

## ABSTRACT

**Purpose** - This paper deals with a simplified numerical model with the aim of assessing the impact of using grain-oriented electrical steel (GOES) in switched reluctance machine (SRM) performances.

**Design/methodology/approach** - A simplified numerical model is developed in this paper to study the SRM performance when GOES is used in their magnetic circuits. Different grades of steel are studied to firstly analyse their contribution to the inductance and electromagnetic torque change. Then, both the simplified model and the steel grades enabled evaluating the contribution of anisotropy and high permeability individually. The impact on electromagnetic torque is evaluated along with a local analyses of the flux lines distribution.

**Findings** - The proposed numerical model allows to draw conclusions on the device performances such as inductance and electromagnetic torque when anisotropy is introduced. It especially highlights the level of contribution of anisotropy and high permeability.

**Research limitations/implications** - The GOES numerical model used for finite elements simulations is not a fully developed model but it is accurate enough for our study.

**Practical implications** - This study was done to understand the behaviour of an axial flux switched reluctance machine with the use of GOES, without having to design a complex and time-consuming 3D model. It is a simple way to investigate and analyze the use of GOES in a SRM.

**Originality/value** - The developed model is relatively simple and accurate enough to investigate all the electromagnetic phenomena and draw conclusions which can be applicable to a more complex electromagnetic device. The second original aspect is the introduction of GOES in an axial flux SRM (AFSRM).

**Keywords** - Anisotropy, Axial flux switched reluctance machine, Grain oriented electrical steel, Axial flux, Electromagnetic torque, Inductance.

**Paper Type** - Research paper

## 1. INTRODUCTION

When designing rotating electrical machines with large power-to-weight ratio and high efficiency, it is advantageous to introduce high performance materials, while taking into account environmental and financial costs. In this context, SRM are suitable candidates giving the fact they are magnet free and have no winding at the rotor (Miller, 2002). They are known to be robust and reliable (Stephens, 1991) even if they operate in harsh environments. They can also function at high torque or high speed. In addition to these advantages, several studies on the AFSRM have shown that the latter is more compact compared to a radial flux SRM (RFSRM) (Madhavan and Fernandes, 2012; Tsai and Chen, 2006), allowing the introduction of these machines to electric vehicle applications.

GOES performance varies depending on the flux direction because of the steel anisotropic nature. Therefore, there are several difficulties to use this material in electrical rotating machines, except with segmented magnetic circuits. Hence, it is necessary to find appropriate machine structures allowing the best use of the GOES inherent qualities. It is even more difficult, since GOES has very high permeabilities. As a matter of fact, this kind of

electrical steel has limited iron losses, higher levels of permeability and higher saturation levels compared to conventional non-oriented grain electrical steel.

Despite the difficulties to integrate GOES in a rotating system, previous works have been focused on their use in classical alternative machine. As a result, (Lopez et al., 2009) use GOES in the magnetic circuit of induction machines. They showed that their efficiency can be improved by shifting each lamination without segmentation by an angle of  $90^\circ$  which was experimentally determined. That way, the flux flows through laminations, passing from a lamination to an adjacent one in order to benefit from the easiest magnetisation direction.

However, the most suitable machines for GOES use are SRM. Some authors studied the performances of axial and radial flux SRM and showed that with GO steel, the electromagnetic torque can be improved by up to 21% compared to a conventional SRM. The authors of (Labak and Kar, 2013) introduced segmented grain-oriented steel in c-core stator teeth of an axial flux SRM to deal with issues of low inductance ratio. This has showed a 5% improvement in the inductance ratio. Madhavan in (Ma et al., 2017) used GOES in both stator and rotor teeth in a dual stator and central rotor AFSRM. The rotor and stator using GOES are connected to a retaining disk and the stator yoke by bolts. After analyzing different shapes and deviation angles between the magnetic flux and rolling direction of the GOES, the maximum electromagnetic torque of the proposed design showed a 21.4% increase in comparison with the one of a conventional non-oriented electrical steel. Then, Sugawara and akatsu in (Sugawara and Akatsu, 2013) introduced GOES in both stator and rotor teeth of a RFSRM showing an increase of the average torque by 10% in comparison with NO steel. As far as the numerical modeling is concerned, dealing with both anisotropy and saturation in 3D magnetic circuit modeling is still complex and time-consuming, especially for convergence difficulties.

In this paper, an AFSRM structure integrating GOES in the rotor is presented. Then, in order to avoid a heavy and time-consuming 3D simulation, a simple numerical model is used to evaluate the GOES local impact by analyzing the flux lines distribution. A detailed comparison featuring different configurations and their corresponding inductance and torque profiles is given.

## 2. AFSRM AND NUMERICAL MODEL PRESENTATION

### 2.1 AFSR magnetic circuit

In this study, the double salient SRM considered is an axial flux machine, with a rotor positioned between two outer stators as shown in Fig.1.

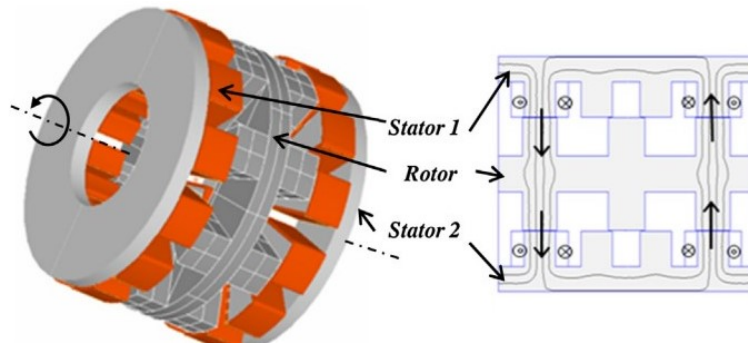


Figure 1. Flux path (transverse loop)

Such structure allows two different flux paths (Belhadi et al., 2017) : either a loop through the rotor yoke or simply cutting across the rotor (Fig.1). The second flux path configuration is considered in our study since it enables the GOES use defined by three directions : the Rolling (RD), Transverse (TD) and Normal direction (ND). The first two directions are within the same plane and the third one is normal to the plane. The main idea is to take advantage of the performances in the RD when the flux cuts across the rotor as shown in figure 1. This way, steel sheets can be arranged in two configurations as shown in Fig.2, giving two planes as options for the flux path : in the transverse direction (TD) and rolling direction (RD) or the normal direction (ND) and RD which may change the saliency effect.

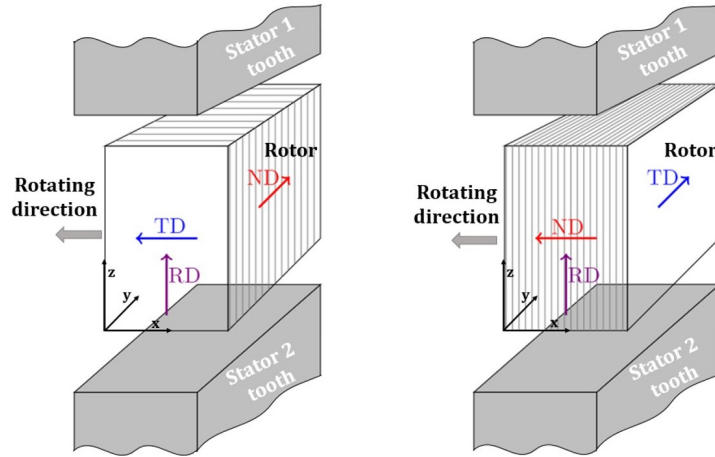


Figure 2. GOES configurations in the AFSRM

## 2.2 Simplified numerical model

In order to evaluate the anisotropy contribution and what the GOES performance brings in a rotating machine without modeling a time consuming and complex 3D geometry, the authors propose a simplified model shown in Fig.3. It makes it possible to take into account saliency and rotation. The aim is to describe and analyze through this model the phenomena occurring around the 3D machine teeth.

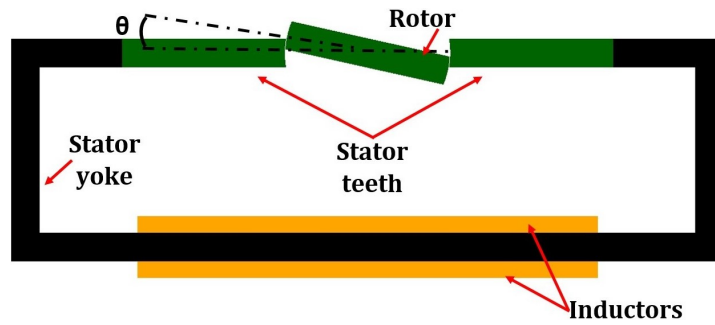


Figure 3. Simplified numerical model

The model is made of a black stator yoke with a very high permeability in comparison with the rest of the magnetic circuit. This is to ensure that the magnetic state of the stator yoke does not influence the rest of the studied circuit. In addition to the yoke, two stator teeth and a straight rotor were modeled in green. In the model,  $\theta$  is the angle representing the rotor position between alignment and the opposition position. Anisotropy is introduced using a diagonal tensor with a normal permeability which value is defined in, <sup>Hihat et al., 2014</sup> first on the stator to simplify the anisotropy modeling when the rotor position is changed. Then, the numerical model also permits the use of GOES at the rotor to analyze the flux lines distribution when anisotropy is introduced in the rotating parts.

Three different types of electrical steel are considered :

- **M400** : Isotropic non-oriented grain electrical steel of 0.5mm
- **HGO35** : Anisotropic high-grade GOES of 0.35mm, which can be arranged in two different configurations (Fig.2)
- **Iso** : Isotropic high-grade non-existent steel with a  $B(H)$  characteristic identical to the HGO35 rolling direction properties

The third isotropic steel referred to as "Iso" is actually a non-existent material but the inductance and torque results compared to those obtained with the two other cases will make it possible to separate the influence of the anisotropy from the steel quality and permeability.

In order to highlight the contribution of both the steel quality (involving permeability and flux density saturation level) and the anisotropic nature of the material, multiple configurations were simulated. While the rotor (Fig.3) was characterized with M400 steel in the first comparison, stator teeth used M400, HGO35 GO steel or isotropic steel with a B(H) characteristic identical to the HGO35 rolling direction properties. Another series of configurations where the stator teeth are characterized with M400 steel and the rotor uses different steel types : M400 steel, HGO35 and high grade isotropic steel presented earlier. A description of all the studied and simulated configurations is given in table 1.

Table 1. A summary of the studied configurations

Case	Stator steel	Rotor steel
1	M400	M400
2	$HGO_{35}^{TD}$	M400
3	Iso	M400
4	M400	$HGO_{35}^{TD}$
5	M400	Iso
6	$HGO_{35}^{TD}$	$HGO_{35}^{TD}$
7	M400	$HGO_{35}^{ND}$
8	$HGO_{35}^{TD}$	$HGO_{35}^{ND}$
9	Iso	$HGO_{35}^{ND}$
10	$HGO_{35}^{ND}$	M400
11	$HGO_{35}^{ND}$	Iso
12	$HGO_{35}^{ND}$	$HGO_{35}^{ND}$

The designation " $HGO_{35}^{TD}$ " refers to HGO35 steel arranged following the first configuration in Fig.2 and " $HGO_{35}^{ND}$ " refers to the second one. In the rest of the document, all the studied cases will be named according to this designation template "Stator steel type - Rotor steel type".

### 2.3 GOES numerical model

With the anisotropic nature of GOES, difficulties can be experienced when modeling a rotating structure due to the rotating field and the alterations in the flux path. However, there are several advantages to the use of GOES such as an excellent permeability, high saturation and flux density and low losses (Xia et al., 2008). Also, the introduction of very thin GOES sheets minimizing eddy losses which engaged more research towards the integration of GOES in rotating machines. For thinner laminations such as (0.27 mm), core losses can be as low as 0.8 W/Kg at 1.5T and 50Hz (GmbH, 2011). Because GOES behavior can be influenced by a couple of factors such as the grain size and stress, accurate modeling of magnetic hysteresis for GOES can become a tricky task. Furthermore, GOES exhibits strong non linearity and anisotropy making it difficult to deal with in rotating devices. It gets particularly difficult to reproduce with accuracy the magnetic hysteresis in the region before the knee and to predict magnetic losses (Cardelli and Faba, 2014 & Zirka et al., 2008). With these difficulties, no thorough modeling which takes into account the full behavior of GOES has been addressed to date.

The FE simulation is performed using the code GETDP and the anisotropic nature of the GO electrical steel is defined by three directions : RD, TD and Normal direction ND (Fig.4) .

The relation between the magnetic flux density and the magnetic field can be expressed using a tensor as follows:

$$\begin{pmatrix} b_{RD} \\ b_{TD} \\ b_{ND} \end{pmatrix} = \begin{pmatrix} \mu_{RD} & 0 & 0 \\ 0 & \mu_{TD} & 0 \\ 0 & 0 & \mu_{ND} \end{pmatrix} \times \begin{pmatrix} h_{RD} \\ h_{TD} \\ h_{ND} \end{pmatrix} \quad (1)$$

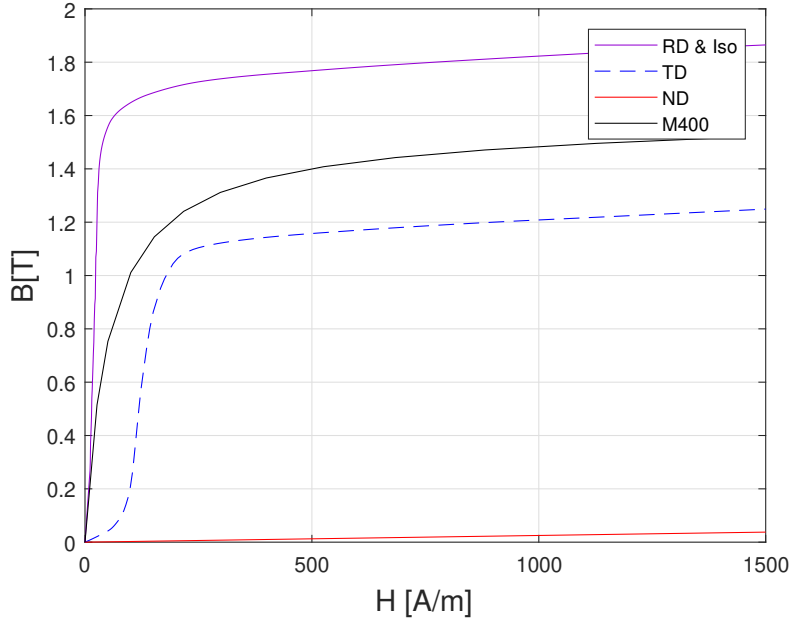


Figure 4. B(H) curves in the numerical model

In 1, each magnetic permeability is a function of the magnetic field and that saturation is taken into account. This equation also takes into account the magnetic characteristics only in the main directions and makes it possible to define both configurations in Fig.2. This is a simple method to understand the behavior of a rotating machine equipped with GOES, but appropriate enough to draw conclusions for comparing with a non GO case.

### 3. RESULTS AND DISCUSSION

#### 3.1 Inductance comparison

The inductance simulation results given in this section were computed for a current of 0.8 A (Fig.5 and Fig.6). In the model, the inductors are defined with 1000 turns in series per phase.

The inductance results cover a rotor position range from 0 to 25 degrees, which represents the interest area for torque production between the alignment position and the flat section representative of the opposition. In Fig.5, three inductance curves are displayed for the first three cases defined in table 1 at the same input current of 0.8 A. The aim of Fig.6 is to understand and separate the contribution of both the anisotropy introduced by the HGO35 steel and high permeability only given by Iso steel.

Fig.5 shows that the curves corresponding to the use of anisotropic and isotropic non-existent materials (HGO35 TD-M400 and Iso-M400) are overlapping, suggesting that the anisotropic nature does not play a role in improving the inductance value. This confirms that the anisotropic nature of the material has no effect on the inductance performance, but only the high permeability and quality of the steel can affect it. As a result, a steeper slope is observed compared to the case using the M400 steel.

These results show that using a higher quality steel improves the maximum inductance value when GOES is introduced at the stator teeth. Since it has been showed in Fig.5 that the use of HGO35 and the non-existent steel resulted in identical curves concluding that only high grade material influences the inductance shape, cases using the non-existent material referred to as "Iso" will not be presented in Fig.6.

In Fig.6, the results show that using a higher quality steel improves the maximum inductance value by 5.9% when GOES is introduced at the stator teeth, by 2.1% when GOES is at the rotor and by nearly 12% when GOES is used in both.

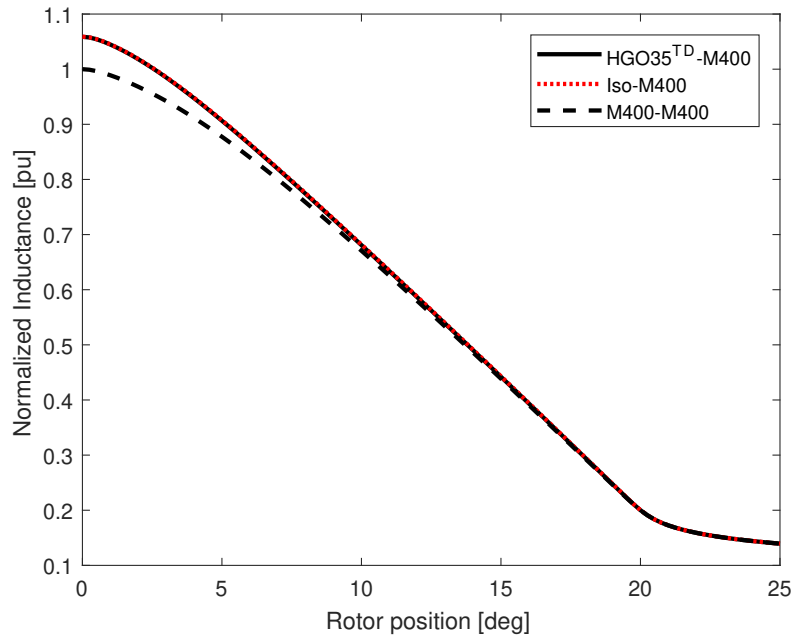


Figure 5. Influence of anisotropy on the inductance

In general, it can be observed that the highest inductances peaks and the steepest slopes are attributed to the cases where anisotropy is used in both the stator teeth and the rotor ( $HGO_{35}^{TD}-HGO_{35}^{TD}$ ,  $HGO_{35}^{TD}-HGO_{35}^{ND}$  and  $HGO_{35}^{ND}-HGO_{35}^{ND}$ ).

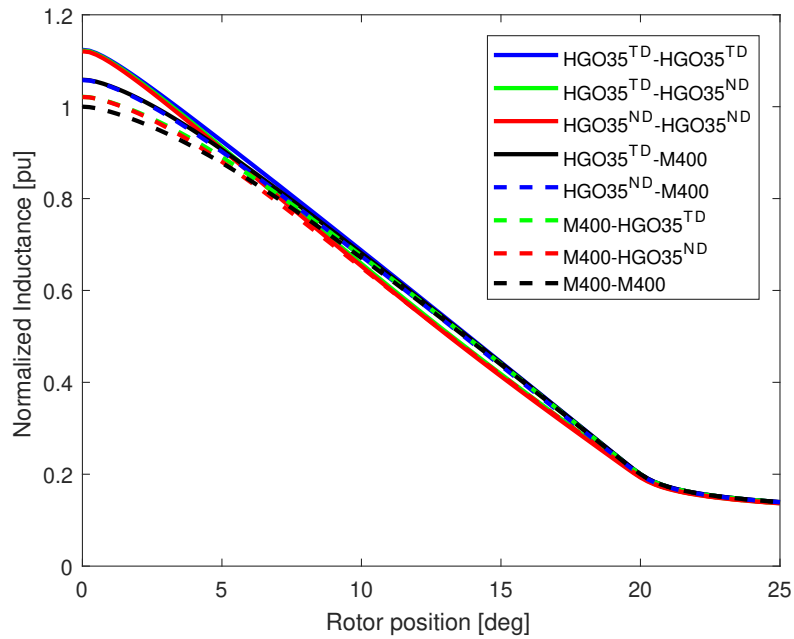


Figure 6. Inductance variations with rotor position at 0.8A

By investigating closely (Fig.7) the three cases mentioned above, it can be noticed that the configuration HGO35 TD-HGO35 TD shows a higher slope for rotor positions between the alignment and the opposition whereas the two remaining cases are superposed.

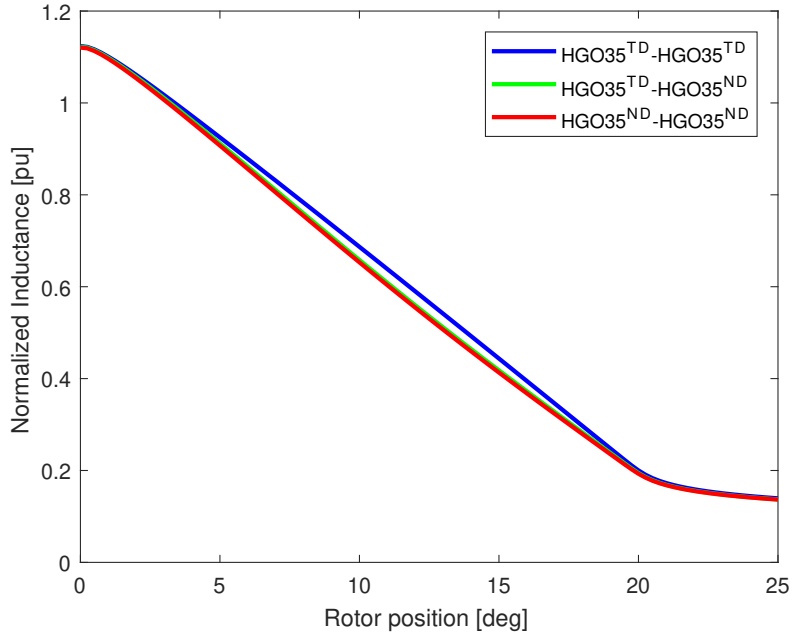


Figure 7. Inductance for 3 anisotropic cases at 0.8A

For a better understanding of the anisotropy behavior, it is worth considering a local investigation by analyzing the flux distribution between the rotor and a stator tooth. Therefore, a distribution of the flux lines is shown in Fig.8 in a layout where the rotor is rotated by 12.5 degrees and both stator and rotor are using M400 steel. In

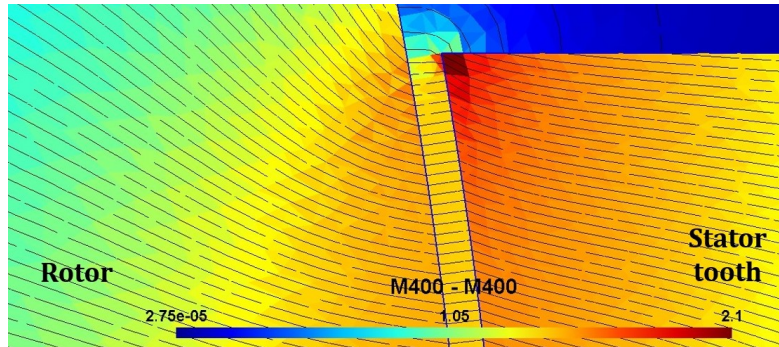


Figure 8. Flux lines distribution for M400-M400

Fig.9, GOES is introduced at the stator teeth ( $HGO_{35}^{TD}$ -M400) and shows a straighter path of flux lines due to anisotropy which is the sole element influencing the flux path.

The same behaviour is observed when anisotropy is introduced at the rotor (Fig.10) ( $M400$ - $HGO_{35}^{TD}$ ). When anisotropy is introduced at the stator (Fig.9), it can be noticed that highest induction level is located in a horizontal way at the stator tooth upper section whereas in Fig.10 it is located vertically along the stator tooth tip.

In Fig.11 and 12, GOES is used in both stator teeth and the rotor ( $HGO_{35}^{TD}$ - $HGO_{35}^{TD}$  and  $HGO_{35}^{ND}$ - $HGO_{35}^{ND}$ ). By analyzing the flux distribution of the two last cases ( $HGO_{35}^{TD}$ - $HGO_{35}^{TD}$  and  $HGO_{35}^{ND}$ - $HGO_{35}^{ND}$ ), it can be noted that in the case  $HGO_{35}^{TD}$ - $HGO_{35}^{TD}$  flux lines tend to generally follow their path through iron in the rotor before crossing to the stator tooth. However, for  $HGO_{35}^{ND}$ - $HGO_{35}^{ND}$  there are fewer flux lines following the iron path and are rather looping around.



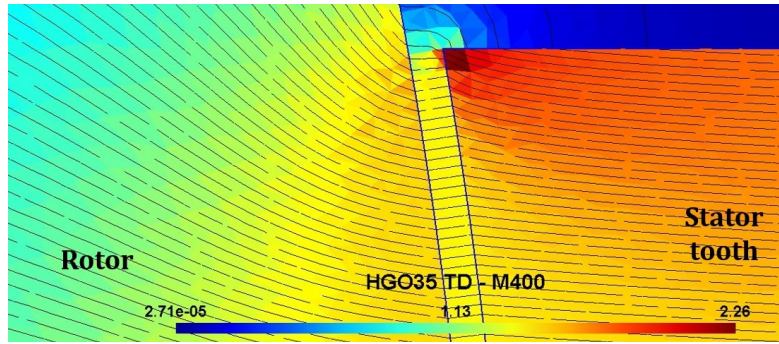


Figure 9. Flux lines distribution for HGO35 TD-M400

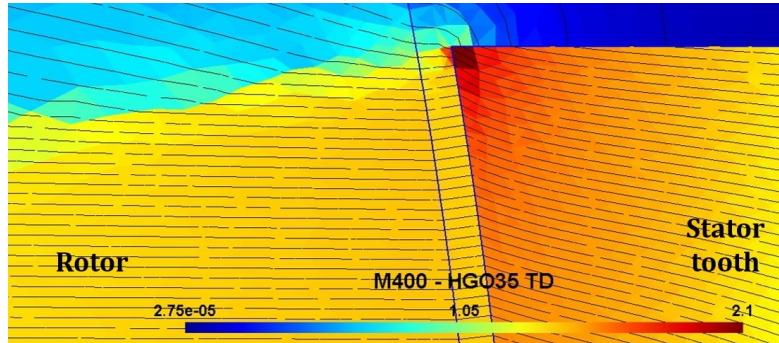


Figure 10. Flux lines distribution for M400-HGO35 TD

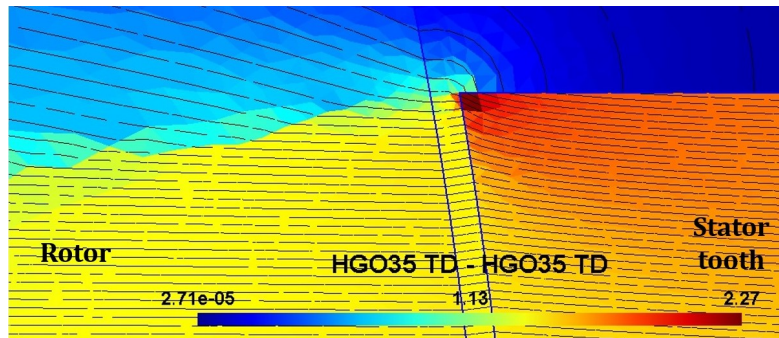


Figure 11. Flux lines distribution for HGO35 TD-HGO35 TD

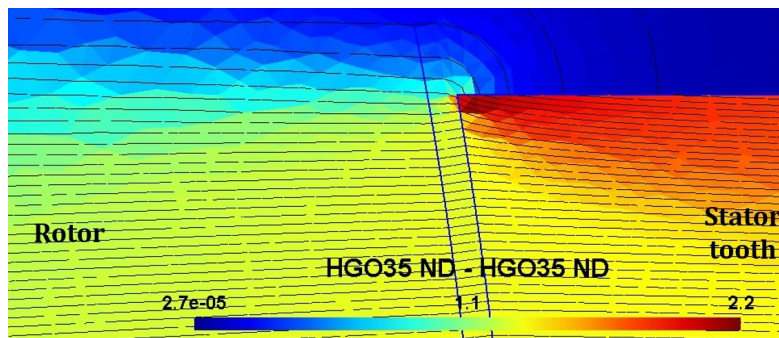


Figure 12. Flux lines distribution for HGO35 ND-HGO35 ND

### 3.2 Torque comparison

Similarly to the inductance, the electromagnetic static torque profile is shown for the same current level (0.8 A).

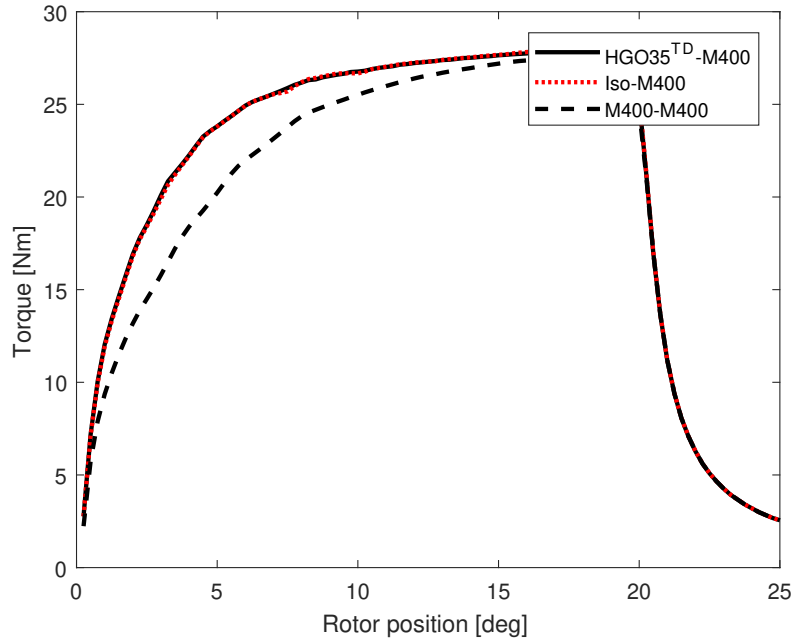


Figure 13. Influence of anisotropy on the electromagnetic torque

In Fig.13, three torque curves are shown for three cases aiming to separate the influence of anisotropy from high permeability. The results in Fig.13 are in line with the inductance results (Fig.5) as we can conclude that the anisotropic nature does not influence the electromagnetic torque waveform.

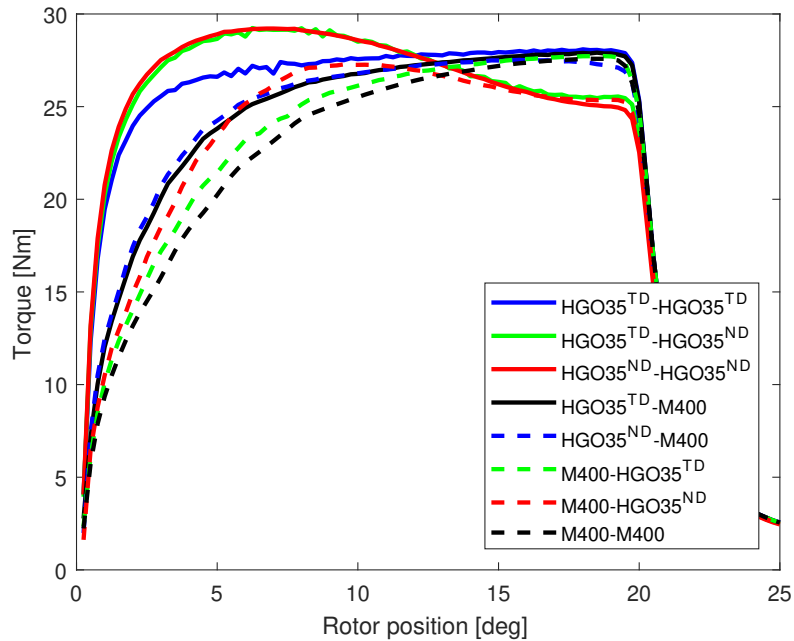


Figure 14. Torque variations with rotor position at 0.8A

For the rest of the analysis only M400 steel and anisotropic HGO35 steel will be taken into account.

The most important improvement in the electromagnetic torque mean value (Fig.14) is attributed to the cases with HGO35 in both the stator teeth and the rotor. They show an increase higher than (14%) of the torque mean value in comparison with the M400-M400 case. Then, an increase of (6.8%) is noticed when GOES is introduced in the stator versus (2.6%) increase only when GOES is in the rotor.

The introduction of HGO35 steel arranged according to the second configuration (Fig.2) shows an obvious change in the torque waveform (Fig.15). This is mainly due to the change in the inductance waveform. The plateau noticed for  $HGO_{35}^{TD}-HGO_{35}^{TD}$  is maintained across a longer rotor position range values in comparison with the two other cases.  $HGO_{35}^{TD}-HGO_{35}^{ND}$  and  $HGO_{35}^{ND}-HGO_{35}^{ND}$  results show superposed waveforms which leads to conclude that using the second configuration (Fig.2) at the stator teeth has no effect on the inductance and torque performance. However, it is observed that despite the change in the electromagnetic torque aspect the three waveforms have the same torque mean value.

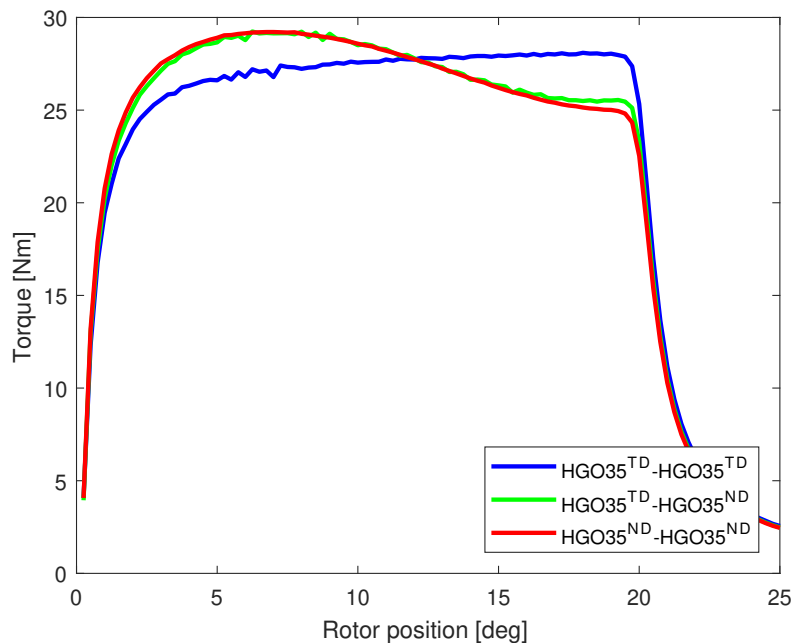


Figure 15. Torque for 3 anisotropic cases at 0.8A

Table 2 summarizes the results for all the steel configurations studied. It shows the contribution of these configurations in the inductance slope change and the electromagnetic torque mean value. The percentage increase given below are always calculated compared to the reference case : M400-M400.

Table 2. Results analysis summary at 0.8 A

Steel configuration (S-R)	$L_{\max}$ (%)	$T_{\text{mean}}$ (%)
M400-M400	-	-
HGO35 TD-M400	5.9 %	6.8 %
M400-HGO35 TD	2.2 %	2.5 %
HGO35 TD-HGO35 TD	12.4 %	14.4 %
M400-HGO35 ND	2.1 %	2.7 %
HGO35 TD-HGO35 ND	12.2 %	14.5 %
HGO35 ND-M400	5.8 %	6.8 %
HGO35 ND-HGO35 ND	12.1 %	14.3 %

## 4. CONCLUSION

This simplified numerical model has allowed to analyze all the phenomena needed to understand the behaviour of such device when anisotropy is introduced. The introduction of an isotropic non-existent material enabled to separate the anisotropy contribution from the steel high permeability. This has showed that only high permeability and quality steel have an influence on the inductance form. Flux lines distribution, inductance and electromagnetic torque waveforms were also analyzed. Although, this analyses showed that the best improvement in the torque's mean value happens when GOES is introduced in both the stator teeth and the rotor, the feasibility of this configuration needs to be later assessed for a full 3D AFSRM. It is interesting to note that this investigation work has also showed that using GOES at the stator teeth only or the rotor only also gives a satisfying improvement in the torque value. Based on these results, future work will include a reasoning on the feasibility of these configurations in the studied machine.

## Acknowledgment

This work has been achieved within the framework of CE2I project (Convertisseur d'Énergie Intégré Intelligent). CE2I is co-financed by European Union with the financial support of European Regional Development Fund (ERDF), French State and the French Region of Hauts-de-France.

## REFERENCES

- [Belhadi et al., 2017] Belhadi, M., Krebs, G., Marchand, C., Hannoun, H., and Mininger, X. (2017). Evaluation of axial srm for electric vehicle application. *Electric Power Systems Research*, 148:155–161.
- [Cardelli and Faba, 2014] Cardelli, E. and Faba, A. (2014). Numerical two-dimensional modeling of grain oriented steel. *Journal of Applied Physics*, 115(17):17A327.
- [GmbH, 2011] GmbH, T. E. S. (2011). *PowerCore TM Electrical Steel*. ThyssenKrupp Printmedia GmbH.
- [Hihat et al., 2014] Hihat, N., Lecointe, J.-P., Ninet, O., Duchesne, S., and Napieralska, E. (2014). Normal permeability of grain non-oriented, grain oriented and amorphous electrical steel sheets. *International Journal of Applied Electromagnetics and Mechanics*, 46(2):349–345.
- [Labak and Kar, 2013] Labak, A. and Kar, N. C. (2013). Novel approaches towards leakage flux reduction in axial flux switched reluctance machines. *IEEE Transactions on Magnetics*, 49(8):4738–4741.
- [Lopez et al., 2009] Lopez, S., Cassoret, B., Brudny, J.-F., Lefebvre, L., and Vincent, J.-N. (2009). Grain oriented steel assembly characterization for the development of high efficiency ac rotating electrical machines. *IEEE Transactions on Magnetics*, 45(10):4161–4164.
- [Ma et al., 2017] Ma, J., Li, J., Fang, H., Li, Z., Liang, Z., Fu, Z., Xiao, L., and Qu, R. (2017). Optimal design of an axial-flux switched reluctance motor with grain-oriented electrical steel. *IEEE Transactions on Industry Applications*, 53(6):5327–5337.
- [Madhavan and Fernandes, 2012] Madhavan, R. and Fernandes, B. G. (2012). Comparative analysis of axial flux srm topologies for electric vehicle application. In *Power Electronics, Drives and Energy Systems, IEEE International Conference*, pages 1–6.
- [Miller, 2002] Miller, T. (2002). Optimal design of switched reluctance motors. *IEEE Transactions on Industrial Electronics*, 49(1):15–27.
- [Stephens, 1991] Stephens, C. (1991). Fault detection and management system for fault-tolerant switched reluctance motor drives. *IEEE Transactions on Industry Applications*, 27(6):1098–1102.
- [Sugawara and Akatsu, 2013] Sugawara, Y. and Akatsu, K. (2013). Characteristics of a switched reluctance motor using grain-oriented electric steel sheet. In *International Conference on Electrical Machines and Systems*, pages 18–23.
- [Tsai and Chen, 2006] Tsai, J.-F. and Chen, Y.-P. (2006). Design and performance analysis of an axial-flux disk-type switched reluctance motor for hybrid scooters. *International Journal Series C Mechanical Systems, Machine Elements and Manufacturing*, 49(3):882–889.
- [Xia et al., 2008] Xia, Z., Kang, Y., and Wang, Q. (2008). Developments in the production of grain-oriented electrical steel. *Journal of Magnetism and Magnetic Materials*, 320(23):3229–3233.

[Zirka et al., 2008] Zirka, S. E., Moroz, Y. I., Marketos, P., Moses, A. J., Jiles, D. C., and Matsuo, T. (2008). Generalization of the classical method for calculating dynamic hysteresis loops in grain-oriented electrical steels. *IEEE Transactions on Magnetics*, 44(9):2113–2126.