



Corrigendum to "Influence of ablation-related processes in the build-up of simulated Northern Hemisphere ice sheets during the last glacial cycle" published in The Cryosphere, 7, 681-698, 2013

S. Charbit, C. Dumas, M. Kageyama, D. M. Roche, C. Ritz

► To cite this version:

S. Charbit, C. Dumas, M. Kageyama, D. M. Roche, C. Ritz. Corrigendum to "Influence of ablation-related processes in the build-up of simulated Northern Hemisphere ice sheets during the last glacial cycle" published in The Cryosphere, 7, 681-698, 2013. The Cryosphere, 2013, 7, pp.933-934. 10.5194/tc-7-933-2013 . hal-04114071

HAL Id: hal-04114071

<https://hal.science/hal-04114071>

Submitted on 2 Jun 2023

HAL is a multi-disciplinary open access archive for the deposit and dissemination of scientific research documents, whether they are published or not. The documents may come from teaching and research institutions in France or abroad, or from public or private research centers.

L'archive ouverte pluridisciplinaire **HAL**, est destinée au dépôt et à la diffusion de documents scientifiques de niveau recherche, publiés ou non, émanant des établissements d'enseignement et de recherche français ou étrangers, des laboratoires publics ou privés.



Distributed under a Creative Commons Attribution 4.0 International License



Corrigendum to

“Influence of ablation-related processes in the build-up of simulated Northern Hemisphere ice sheets during the last glacial cycle” published in The Cryosphere, 7, 681–698, 2013

S. Charbit¹, C. Dumas¹, M. Kageyama¹, D. M. Roche¹, and C. Ritz²

¹IPSL/Laboratoire des sciences du climat et de l’environnement, UMR CEA-CNRS-UVSQ 8212, CE Saclay, Orme des Merisiers, Bât. 701, 91191 Gif-sur-Yvette cedex, France

²UJF – Grenoble 1/CNRS, Laboratoire de glaciologie et de géophysique de l’environnement, UMR 5183, Grenoble, 38041, France

Correspondence to: S. Charbit (sylvie.charbit@lsce.ipsl.fr)

We regret to have found errors in our manuscript entitled “Influence of ablation-related processes in the build-up of simulated Northern Hemisphere ice sheets during the last glacial cycle” (The Cryosphere, 7, 681–698, doi:10.5194/tc-7-681-2013, 2013), in Fig. 1, Fig. 6 caption and in the list of references.

In Fig. 1, the top and bottom panels have been inverted. The corrected figure is on the next page.

The corrected caption of Fig. 6 is the following:

“Simulated ice thickness difference (in meters) when substituting the TP02 refreezing scheme in the FST09 model (top panels: FST09 with TP02 refreezing – FST09; run 24) and when allowing the FST09 model a fixed portion (i.e. $P_{\max} = 60\%$) of meltwater to produce superimposed ice (bottom panels: FST09 with RH91 refreezing – FST09; run 25). Left panels refer to the 115 ka period and right panels refer to the LGM (i.e. 21 ka). The thick black lines represent the contour of the continents and thin ones display the iso-contours of surface elevation (from 1000 to 5000 m).

The exact reference for Braithwaite (1984) is:

References

Braithwaite, R. J.: Calculation of degree-days for glacier-climate research, *Zeitschrift für Gletscherkunde und Glazialgeologie*, 20, 1–8, 1984.



The publication of this article is financed by CNRS-INSU.

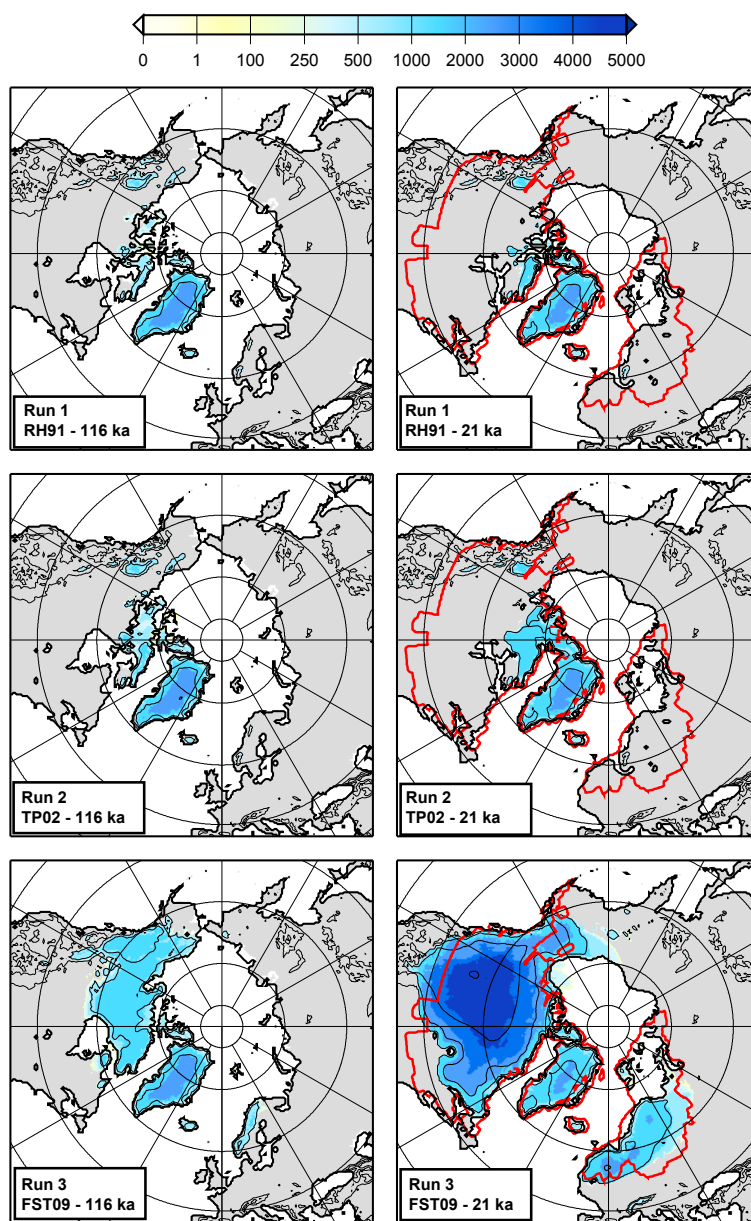


Fig. 1. Simulated ice thickness (in meters) at 116 ka (left panels) and 21 ka (right panels) produced by the three standard fully coupled experiments with the RH91 (run 1, top panels), TP02 (run 2, middle) and FST09 (run 3, bottom) PDD models. Thick black lines represent the coastline and thin black lines display the iso-contours of surface elevation (from 1000 to 5000 m). The thick red lines in the right panels represent the areal extent of the ICE-5G LGM ice sheets (Peltier, 2004).