



HAL
open science

Prologue: An Introduction to the Angkorian World

Mitch Hendrickson, Miriam Stark, Damian Evans, Roland Fletcher

► **To cite this version:**

Mitch Hendrickson, Miriam Stark, Damian Evans, Roland Fletcher. Prologue: An Introduction to the Angkorian World. The Angkorian World, pp.1-14, 2023, 9780815355953. hal-04109000

HAL Id: hal-04109000

<https://hal.science/hal-04109000v1>

Submitted on 29 May 2023

HAL is a multi-disciplinary open access archive for the deposit and dissemination of scientific research documents, whether they are published or not. The documents may come from teaching and research institutions in France or abroad, or from public or private research centers.

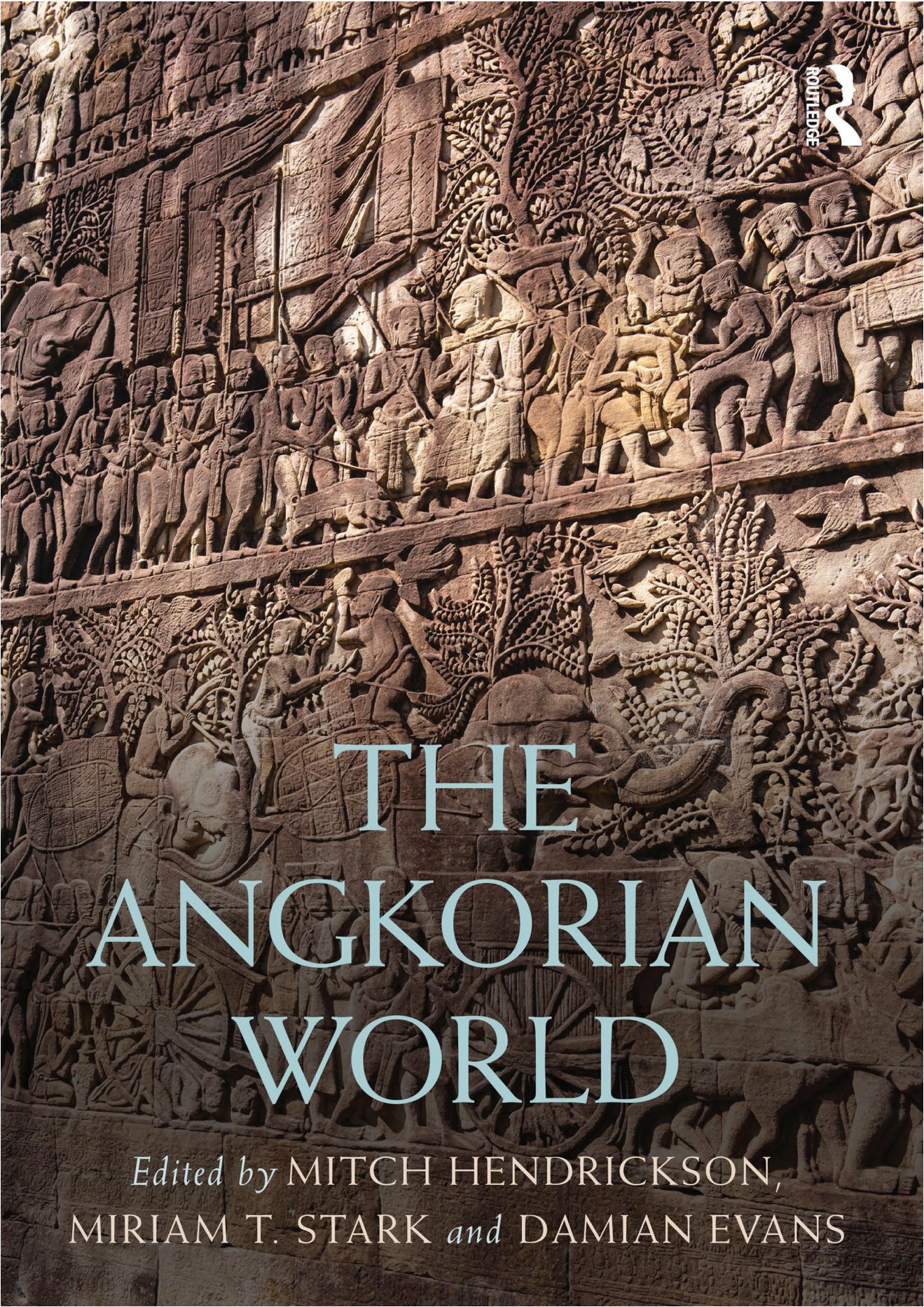
L'archive ouverte pluridisciplinaire **HAL**, est destinée au dépôt et à la diffusion de documents scientifiques de niveau recherche, publiés ou non, émanant des établissements d'enseignement et de recherche français ou étrangers, des laboratoires publics ou privés.



Distributed under a Creative Commons Attribution 4.0 International License



ROUTLEDGE



THE ANGKORIAN WORLD

Edited by MITCH HENDRICKSON,
MIRIAM T. STARK *and* DAMIAN EVANS

THE ANGKORIAN WORLD

The Angkorian World explores the history of Southeast Asia's largest ancient state from the first to mid-second millennium CE. Chapters by leading scholars combine evidence from archaeology, texts, and the natural sciences to introduce the Angkorian state, describe its structure, and explain its persistence over more than six centuries.

Comprehensive and accessible, this book will be an indispensable resource for anyone studying premodern Asia. The volume's first of six sections provides historical and environmental contexts and discusses data sources and the nature of knowledge production. The next three sections examine the anthropogenic landscapes of Angkor (agrarian, urban, and hydraulic), the state institutions that shaped the Angkorian state, and the economic foundations on which Angkor operated. Part V explores Angkorian ideologies and realities, from religion and nation to identity. The volume's last part reviews political and aesthetic Angkorian legacies in an effort to explain why the idea of Angkor remains central to its Cambodian descendants. Maps, graphics, and photographs guide readers through the content of each chapter. Chapters in this volume synthesise more than a century of work at Angkor and in the regions it influenced.

The Angkorian World will satisfy students, researchers, academics, and the knowledgeable layperson who seeks to understand how this great Angkorian Empire arose and functioned in the premodern world.

Mitch Hendrickson is Associate Professor of Anthropology at the University of Illinois at Chicago, USA. He worked as an archaeologist in northwest Mexico, the Canadian Plains, and High Arctic before shifting his focus to Cambodia in 2001. His initial research on the establishment and role of the Angkorian road system enabled him to develop two ongoing projects in collaboration with the Ministry of Culture and Fine Arts on the technological transformation that enabled expansions of the Khmer Empire and understanding religious transition at the site of Preah Khan of Kompong Svay.

Miriam T. Stark is Professor of Anthropology and Director of the Center for Southeast Asian Studies at the University of Hawai'i at Mānoa, USA. Her 40-year career includes fieldwork in North America, the Near East, and Southeast Asia; she launched her first field project in Cambodia in 1996. Her Cambodian research, through multiple projects in collaboration with Cambodia's Ministry of Culture and Fine Arts, focuses on protohistoric to Angkorian period urbanism, early state formation, and political economy.

Damian Evans is Senior Research Fellow at the École française d'Extrême-Orient in Paris and an Honorary Associate in the Department of History, School of Philosophical and Historical Inquiry at the University of Sydney. He is involved in a diverse array of projects across Southeast Asia encompassing archaeology, heritage, and the earth sciences, and he has initiated and overseen archaeological projects in Cambodia since the late 1990s. His work focuses on using earth observation technologies such as satellite imagery, radar and lidar to understand the relationship between humans and their environments from the deep past to the present day.

ROUTLEDGE WORLDS

The Routledge Worlds are magisterial surveys of key historical epochs, edited and written by world-renowned experts. Giving unprecedented breadth and depth of coverage, they are the works against which all future books on their subjects will be judged and are essential reading for anyone with a serious interest in the subject.

THE ANGKORIAN WORLD

Edited by Mitch Hendrickson, Miriam T. Stark and Damian Evans

THE ANGKORIAN WORLD

*Edited by Mitch Hendrickson, Miriam T. Stark
and Damian Evans*

Cover image: Erika Piñeros

First published 2023
by Routledge

4 Park Square, Milton Park, Abingdon, Oxon OX14 4RN

and by Routledge
605 Third Avenue, New York, NY 10158

Routledge is an imprint of the Taylor & Francis Group, an informa business

© 2023 selection and editorial matter, Mitch Hendrickson, Miriam T. Stark and Damian Evans; individual chapters, the contributors

The right of Mitch Hendrickson, Miriam T. Stark and Damian Evans to be identified as the authors of the editorial material, and of the authors for their individual chapters, has been asserted in accordance with sections 77 and 78 of the Copyright, Designs and Patents Act 1988.

All rights reserved. No part of this book may be reprinted or reproduced or utilised in any form or by any electronic, mechanical, or other means, now known or hereafter invented, including photocopying and recording, or in any information storage or retrieval system, without permission in writing from the publishers.

Trademark notice: Product or corporate names may be trademarks or registered trademarks, and are used only for identification and explanation without intent to infringe.

British Library Cataloguing-in-Publication Data

A catalogue record for this book is available from the British Library

Library of Congress Cataloging-in-Publication Data

Names: Hendrickson, Mitch, editor, author. | Stark, Miriam T., editor, author. | Evans, Damian, editor, author.

Title: The Angkorian World / edited by Mitch Hendrickson, Miriam T. Stark and Damian Evans.

Description: New York : Routledge, 2023. | Series: Routledge Worlds | Includes bibliographical references and index. |

Identifiers: LCCN 2022058733 (print) | LCCN 2022058734 (ebook) | ISBN 9780815355953 (hardback) | ISBN 9781032439266 (paperback) | ISBN 9781351128940 (ebook)

Subjects: LCSH: Angkor (Extinct city)—History. | Angkor (Extinct city)—Civilization. | Cambodia—Antiquities.

Classification: LCC DS554.98.A5 A545 2023 (print) | LCC DS554.98.A5 (ebook) | DDC 959.6/01—dc23/eng/20221214

LC record available at <https://lcn.loc.gov/2022058733>

LC ebook record available at <https://lcn.loc.gov/2022058734>

ISBN: 978-0-8153-5595-3 (hbk)

ISBN: 978-1-032-43926-6 (pbk)

ISBN: 978-1-351-12894-0 (ebk)

DOI: 10.4324/9781351128940

Typeset in Bembo
by Apex CoVantage, LLC

CONTENTS

<i>List of Figures</i>	<i>ix</i>
<i>List of Tables</i>	<i>xiv</i>
<i>List of Contributors</i>	<i>xv</i>
<i>Acknowledgements</i>	<i>xix</i>
0 Prologue: An Introduction to the Angkorian World <i>Mitch Hendrickson, Miriam T. Stark, Damian Evans with Roland Fletcher</i>	1
PART I	
Contexts	15
1 An Environmental History of Angkor: Beginning and End <i>Dan Penny and Tegan Hall</i>	17
2 Texts and Objects: Exploiting the Literary Sources of Medieval Cambodia <i>Dominique Soutif and Julia Estève</i>	25
3 ‘Invisible Cambodians’: Knowledge Production in the History of Angkorian Archaeology <i>Heng Piphah, Seng Sonetra and Nhim Sotheavin</i>	42
4 The Mekong Delta before the Angkorian World <i>Miriam T. Stark and Pierre-Yves Manguin</i>	64
5 The Early Capitals of Angkor <i>Jean-Baptiste Chevance and Christophe Pottier</i>	80

Contents

6	Angkor's Multiple Southeast Asia Overland Connections <i>Kenneth R. Hall</i>	97
7	Angkor and China: 9th–15th Centuries <i>Miriam T. Stark and Aedeon Cremin</i>	112
PART II		
Landscapes		133
8	Forests, Palms, and Paddy Fields: The Plant Ecology of Angkor <i>Tegan Hall and Dan Penny</i>	135
9	Angkor and the Mekong River: Settlement, Resources, Mobility and Power <i>Heng Piphall</i>	154
10	Trajectories of Urbanism in the Angkorian World <i>Damian Evans, Roland Fletcher, Sarah Klassen, Christophe Pottier and Pelle Wijker</i>	173
11	Angkor's Temple Communities and the Logic of its Urban Landscape <i>Scott Hawken and Sarah Klassen</i>	195
12	Angkor as a 'Cité Hydraulique'? <i>Terry Lustig, Jean-Baptiste Chevance and Wayne Johnson</i>	216
PART III		
State Institutions		235
13	Angkorian Law and Land <i>Tess Davis and Eileen Lustig</i>	237
14	Warfare and Defensive Architecture in the Angkorian World <i>David Brotherson</i>	254
15	Āśramas, Shrines, and Royal Power <i>Chea Socheat, Julia Estève, Dominique Soutif and Edward Swenson</i>	272
16	Education and Medicine at Angkor <i>Chhem Rethy, Damian Evans, Chhom Kunthea, Phlong Pisith and Peter D. Sharrock</i>	287

Contents

PART IV	
Economies	307
17 Angkor's Economy: Implications of the Transfer of Wealth <i>Eileen Lustig, Aedeon Cremin and Terry Lustig</i>	309
18 The Temple Economy of Angkor <i>Heng Piphall and Sachchidanand Sahai</i>	327
19 Angkor's Agrarian Economy: A Socio-Ecological Mosaic <i>Scott Hawken and Cristina Cobo Castillo</i>	338
20 From Quarries to Temples: Stone Procurement, Materiality, and Spirituality in the Angkorian World <i>Christian Fischer, Federico Carò and Martin Polkinghorne</i>	360
21 Crafting with Fire: Stoneware and Iron Pyrotechnologies in the Angkorian World <i>Mitch Hendrickson, Ea Darith, Chhay Rachna, Yukeitsugu Tabata, Phon Kaseka, Stéphanie Leroy, Yuni Sato and Armand Desbat</i>	385
22 Food, Craft, and Ritual: Plants from the Angkorian World <i>Cristina Cobo Castillo</i>	401
PART V	
Ideologies and Realities	421
23 Gods and Temples: The Nature(s) of Angkorian Religion <i>Julia Estève</i>	423
24 Bodies of Glory: The Statuary of Angkor <i>Paul A. Lavy and Martin Polkinghorne</i>	435
25 'Of Cattle and Kings': Bovines in the Angkorian World <i>Mitch Hendrickson, Eileen Lustig and Siyonn Sophearith</i>	459
26 An Angkor Nation? Identifying the Core of the Khmer Empire <i>Ian Lowman, Chhom Kunthea and Mitch Hendrickson</i>	479
27 The Angkorian House <i>Alison K. Carter, Miriam T. Stark, Heng Piphall and Chhay Rachna</i>	494

Contents

28	Vogue at Angkor: Dress, Décor, and Narrative Drama <i>Gillian Green</i>	508
29	Gender, Status, and Hierarchy in the Age of Angkor <i>Trude Jacobsen Gidaszewski</i>	525
PART VI		
After Angkor		539
30	Perspectives on the ‘Collapse’ of Angkor and the Khmer Empire <i>Damian Evans, Martin Polkinghorne, Roland Fletcher, David Brotherson, Tegan Hall, Sarah Klassen and Pelle Wijker</i>	541
31	Uthong and Angkor: Material Legacies in the Chao Phraya Basin, Thailand <i>Pipad Krajaejun</i>	554
32	Mainland Southeast Asia After Angkor: On the Legacies of Jayavarman VII <i>Ashley Thompson</i>	574
33	Early Modern Cambodia and Archaeology at Longvek <i>Martin Polkinghorne and Yuni Sato</i>	592
34	Yama, the God Closest to the Khmers <i>Ang Choulean</i>	614
35	Inarguably Angkor <i>Penny Edwards</i>	629
	<i>Appendix A</i>	645
	<i>Glossary</i>	647
	<i>Index</i>	653

FIGURES

0.1	Timeline of the Angkorian World.	7
0.2	South and Southeast Asia, showing key sites.	8
0.3	Southeast Asia, showing key sites.	9
0.4	Heartland of the Khmer Empire, showing key sites and extent of the Angkorian road system.	10
0.5	Greater Angkor, showing major temple sites and the extent of infrastructure.	11
0.6	Capital region of Yaśodharapura, highlighting the urban layout in and around Angkor Thom and Angkor Wat.	12
0.7	Capital region of Hariharālaya (Roluos).	13
2.1	Silver vase with inscription (K. 1294).	28
2.2	Śivakumbha prepared for a dīkṣā (initiation) in Cuddalore, India.	32
2.3	Grinding stone with inscription (K. 1215).	34
2.4	Prasat towers σ, ρ, π, and τ in Preah Khan of Kompong Svay.	36
2.5	K. 1335, detail of the lower part of the southern door jamb.	37
2.6	Detail of vertical ‘bayonet-cut’ joints in the corbelled vault from prasat tower ρ in Preah Khan of Kompong Svay.	38
3.1	Henri Marchal, a pioneer of the anastylosis method in Angkor, with his Khmer assistant, Chan, and workmen at Banteay Srei temple restoration in 1934.	46
3.2	Henri Marchal and an unnamed Khmer assistant at the restoration of Banteay Srei (Damdek) in 1952.	53
4.1	The Mekong Delta and the Angkorian World before Angkor.	65
5.1	Aerial view of Trapeang Phong.	83
5.2	Archaeological map of the Roluos region.	84
5.3	Rong Chen temple-mountain.	86
5.4	Banteay, the Royal Palace of Mahendraparvata.	87
5.5	Archaeological map of the Kulen plateau highlighting the urban layout of Mahendraparvata.	88
5.6	Newly identified buildings and enclosures within the West Baray.	91
5.7	Archaeological map of the West Baray area.	92
6.1	Potential 12th century communication networks connecting to Angkor.	102

Figures

6.2	Pre-1500 Champa coastline ports-of-trade and hypothesised Western overland connections contesting the Malay Peninsula.	105
7.1	Cambodia and China in premodern Southeast Asia.	116
7.2	Cavalry officer leading Cham men into battle.	122
7.3	Musicians in a military procession.	123
7.4	Recent examples of draped images in Angkor Wat.	125
8.1	Land use maps in Southeast Asia and the Greater Angkor region.	136
8.2	Select Angkor monuments and sediment coring sites from which palaeoecological records were obtained.	141
8.3	Summary of palynological records for the four sites across Angkor.	144
8.4	Ecological group data plotted as z-scores and compared across the four sites.	147
9.1	Location of inscriptions used in this chapter.	155
9.2	The Lower Mekong River region.	156
9.3	Angkorian centres along the Mekong and state-sponsored temples.	157
10.1	Archaeological map of the intramural area of Angkor Thom.	177
10.2	Archaeological map of the Greater Angkor region.	178
10.3	Map of Óc Eo.	180
10.4	Archaeological map of Sambor Prei Kuk.	181
10.5	Lidar renderings of gridded urban areas of the Angkor Period.	184
11.1	Comparison of local community temples versus state and other temples within the civic ceremonial centre and suburban centres of Greater Angkor.	196
11.2	Reconstruction of a mediaeval settlement and village shrine in the south of Angkor.	202
11.3	Range of variations in local temple sites and their associated community settlements.	204
11.4	Density of local community temples per square kilometre in Greater Angkor.	206
11.5	Shift in community temple construction within Greater Angkor between the 8th and 13th centuries.	209
12.1	Angkor's complex hydraulic network.	217
12.2	Water flowing out from a reservoir during rainfall, when irrigation not needed.	219
12.3	Water infrastructure associated with Mahendraparvata.	220
12.4	Inferred layout of stoplog sluice gates along the outlet from Thnal Thom reservoir at Mahendraparvata.	221
12.5	West Baray and surrounding water infrastructures and possible proto-baray.	221
12.6	Zig-zag outlet of the Rahal (<i>baray</i>) at Koh Ker.	222
12.7	Main reservoir at Koh Ker showing existing and former rivers.	223
12.8	West Mebon inside West Baray.	227
12.9	Two rock carvings of Viṣṇu in Anantaśayin mode, Kbal Spean River, Phnom Kulen.	228
13.1	The statue of Duryodhana now returned to Cambodia, June 3, 2014.	238
14.1	Narrative scenes of warfare from bas-reliefs on Angkor Period temples.	255
14.2	Defensive features of the Angkor Thom gopura.	264
14.3	Lidar elevation model of central Angkor with highlights of landscape features and embankment extensions in the 12th century.	266
14.4	Horizontal and vertical holes in upper masonry blocks of the external enclosure wall of Angkor Wat.	267
14.5	'Gateway gap' masonry fill in the external enclosure wall of Angkor Wat.	268

Figures

14.6	Hypothetical reconstruction of defensive structure built along the external enclosure walls of Angkor Wat.	268
15.1	Location of known Yaśodharāśramas, Vīrāśramas, resthouses, and hospitals of Jayavarman VII.	274
15.2	Examples of a typical hospital chapel and fire shrine resthouse.	275
15.3	Lidar image of Prasat Komnap South.	276
15.4	Examples of stela shelters.	277
15.5	Reconstruction of the ‘Long Building’.	278
15.6	Plan of Prasat Neak Buos illustrating the location of the potential Yaśodharāśrama and Vīrāśrama.	280
15.7	Plan of Prasat Khna illustrating the location of the potential Yaśodharāśrama and Vīrāśrama.	284
16.1	Distribution of Jayavarman VII hospital chapels.	298
16.2	Organisation of Jayavarman VII hospital chapels.	299
17.1	Distribution of inscriptions and rice land in Cambodia.	311
17.2	Purchase of land by increasingly high-ranking officials.	312
19.1	Agrarian patches identified within Greater Angkor.	346
19.2	The Pre Rup matrix.	347
19.3	The Phnom Bok matrix.	349
19.4	Lidar relief maps of Angkor Wat and Ta Prohm.	352
19.5	Lidar map of Angkor Thom.	353
19.6	Archaeobotanical remains from some of Angkor’s major temples.	355
20.1	Range of materials used in Khmer temple construction.	361
20.2	Distribution of sandstone formations and location of major archaeological sites and ancient quarries.	363
20.3	Examples of Terrain Rouge sandstone usage in the Angkor Period.	365
20.4	Examples of ‘Grès Supérieurs’ series sandstone usage in the Angkor Period.	366
20.5	Examples of Terrain Rouge (a, b, c, e, g, h, i) and Triassic (d, e, f) sandstone usage at Hariharālaya.	368
20.6	Texture and petrography of the Triassic sandstone.	369
20.7	Incomplete sculptures from stone workshops in Greater Angkor.	371
20.8	Evidence of quarries.	373
20.9	Various types of sandstone used in a decorative wall at Banteay Chhmar.	374
20.10	Triassic sandstone quarries.	375
20.11	Triassic sandstone with a characteristic mottled texture.	377
21.1	Angkorian stonewares types and vessel forms.	386
21.2	Iron objects produced during the Angkor Period.	387
21.3	Pryotechnological production sites in Cambodia and northeast Thailand, stoneware (crosses) and iron (circles).	388
21.4	Kiln morphologies in the Angkor Period.	390
21.5	Characteristics of Angkorian iron smelting sites.	391
22.1	Examples of archaeobotanical remains recovered from five Angkor Period sites.	404
22.2	Summary of the archaeobotanical results from five Angkor Period sites.	406
22.3	Proportions of economic crops found in Ta Prohm over time.	407
22.4	Proportion of <i>indica</i> and <i>japonica</i> rice.	416
22.5	Number of economic taxa identified in each of the sites.	417
24.1	Relief sculptures depicting deity-images in worship.	437

Figures

24.2	Brahmanical (Hindu) deities.	441
24.3	Personalisation of images during the reign of Jayavarman VII.	444
24.4	Sculptural innovation, archaism, and transformation.	446
24.5	Types of Buddha images from the late Angkor and Middle Periods.	449
24.6	Angkorian statuary venerated in the present.	450
25.1	Sandstone Nandin statues.	461
25.2	Depiction of cows in Angkorian bas-relief.	464
25.3	Buffalo images from the Pre-Angkor and Angkor Period.	465
25.4	Milk churning imagery.	468
25.5	Scene depicting Brahmins milking a cow and drinking milk from Ta Prohm.	469
25.6	Trapeang in the Angkorian World.	471
25.7	Comparison of modern cattle densities, Angkorian trapeang and temples.	472
26.1	Distribution of Angkor Period temples and inscriptions including the maximum limit of control as defined by B.-P. Groslier.	481
26.2	Proposed extent of the Angkorian heartland.	483
26.3	Communication corridors of the major Angkorian kings.	484
26.4	State-level infrastructures used by Khmer kings to assert influence within the Angkorian heartland.	485
27.1	Everyday life in Cambodia, past and present.	497
27.2	Possible fence posts identified in an excavated wall profile at Angkor Wat.	498
27.3	Overhead view of excavation trenches at Angkor Wat showing flat-lying sandstone pieces.	499
27.4	Possible hearth from excavations within the Angkor Wat enclosure.	500
27.5	Trash pit from excavations within the Ta Prohm enclosure.	501
27.6	Chinese water dropper in the shape of a chicken found in an excavation at Angkor Wat.	502
28.1	Examples of Angkorian individuals wearing sampot.	509
28.2	Śiva wearing a pleated sampot worn high at the waist, Baphuon style, 11th–12th century.	510
28.3	Devatas wearing double-layer sampot ensembles, Angkor Wat, 12th century.	511
28.4	Examples of short sampot chong kben.	512
28.5	Variations in window blind decorations.	516
28.6	Tapestry medallion with paired phoenix, Angkor Wat, 12th century.	518
28.7	Specific motifs found in narrative tapestries.	519
28.8	Clay model of Maitreya from Sum Tsek temple, Alchi, Ladakh, mid-10th to 11th century.	521
29.1	Key sites discussed in the text.	526
29.2	Relationships between Pre-Angkorian and Angkorian elite, 7th–11th centuries.	529
29.3	Mahidharapura–Angkor marriage relationships.	530
31.1	Sequence of Uthong Art style based on classification by Griswold and Buriphan (1952).	558
31.2	Examples of Buddha statues with traits of Style B and C.	561
31.3	Comparison of Style B Uthong and post-Bayon Buddhas.	563
31.4	Post-Bayon Buddha frieze inside Prasat Ta Tuot, Angkor.	564
31.5	Distribution of Uthong Style A, B, and C Buddha statues on the central plain of Thailand.	566
31.6	Four bronze miniature stūpas typical of the Pre-Ayutthaya and Ayutthaya Periods.	568

Figures

32.1	12th–18th c. mainland Southeast Asian sites mentioned in the text.	575
32.2	Jayavarman VII period imagery.	582
32.3	Bronze tricephalous elephant statue from the Jayavarman VII period.	587
33.1	Overview map of major Early Modern sites in Cambodia.	594
33.2	Stūpa and sculptures from Wat Sithor.	597
33.3	Archaeological map of Longvek.	598
33.4	Distribution and relative quantities of trade ceramics and types from surface collections ($n = 34,385$ registered sherds).	602
33.5	Details of infrastructure and excavations at Longvek and the site of Tuol Bay Ka-ek.	603
33.6	Selection of imported ceramic types from Longvek surface collections.	604
33.7	High-value trade ceramics from central occupation mound, Trench 28.	605
33.8	Aerial view from Tonle Sap River looking south.	606
33.9	Selection of brown-glaze storage jars from Longvek ordered by country of manufacture.	607
34.1	Yama judging souls to hell on the bas-reliefs of Angkor Wat.	616
34.2	Statue of Yama, Angkor Period.	617
34.3	Schematic layout of cremation area typical in rural Khmer villages.	620
34.4	Altar dedicated to Yama (far left) placed within the northeast corner of cremation area.	621
34.5	Schematic layout of area for rice cultivation ritual at Thlork village.	623
34.6	Five sand mounds and Yama altar erected for rice cultivation ritual, Thlork village.	624
34.7	Female medium performing dance to Yama before rice cultivation ritual.	625
34.8	Rice stacked between the Yama altar and shelter.	626

TABLES

7.1	Cross-chronology of Chinese dynasties and Cambodian time periods.	114
7.2	Desirable products of Cambodia and China, listed by Zhao Rugua and Zhou Dagan, with botanical names, comments, and variant translations added where appropriate.	115
8.1	Details, including characteristic plant species, relevant to each of the three WWF-recognised ecoregions of the Greater Angkor region.	137
8.2	Vegetation regions surveyed in Ashwell (1993) and the corresponding JICA (2002) land-use type (where possible, based on spatial and/or descriptive correlation).	137
8.3	The array of pollen types identified in the palaeoecological records analysed and the ecological groups to which they were assigned.	142
11.1	Epigraphic territorial terms and their definitions.	202
13.1	Social status and associated fines from K. 323 (889 CE, sts. 78–82).	248
14.1	Epigraphic sources for warfare in the Angkor Period.	256
14.2	Dimensions of temple enclosure walls in the Pre-Angkor and Angkor Periods.	261
19.1	Distribution of recovered plants across the three study sites.	354
20.1	Main characteristics of the different sandstone lithotypes used during the Angkor Period.	364
22.1	Summary statistics of the five sites.	403
22.2	Presence and absence of economic crops in the five study sites.	408
22.3	Charred rice plant parts found in the five sites.	415
24.1	Epigraphic references for the emplacement of pratimā (likenesses) of Hindu deities and Buddha statues.	440
25.1	Pre-Angkorian and Angkorian inscription data on bovines.	466
25.2	Cow products in the Khmer inscriptions.	467
31.1	Thermoluminescence dating results from this study.	560
31.2	Uthong sites identified in each river basin and city in Thailand based on 2018–2019 surveys.	565
33.1	Types of ceramics recovered from surface collection and excavation at Longvek.	601

CONTRIBUTORS

Ang Choulean is Emeritus Professor of Anthropology at the Royal University of Fine Arts (CAM).

David Brotherson is an honorary associate, Department of Archaeology, University of Sydney (AUS).

Federico Carò is Research Scientist in the Department of Scientific Research of the Metropolitan Museum of Art, New York (USA).

Alison K. Carter is Assistant Professor of Anthropology at the University of Oregon (USA).

Cristina Cobo Castillo is Honorary Researcher at UCL Institute of Archaeology (UK).

Chea Socheat is an archeologist of the Authority for the Protection and Safeguarding of Angkor and the Region of Angkor and a research associate of the *École française d'Extrême-Orient* centre in Siem Reap (CAM).

Jean-Baptiste Chevance is an archaeologist and the Program Director for the Archaeology & Development Foundation—Phnom Kulen Program, Siem Reap (CAM).

Chhay Rachna is Head of the Ceramic Study Office in the Angkor International Centre of Research and Documentation, APSARA National Authority, Siem Reap (CAM).

Chhem Rethy is a distinguished professor of technology and humanities at the Cambodia University of Technology and Science (CamTech) (CAM).

Chhom Kunthea is an epigrapher and researcher in Apsara National Authority (CAM).

Aedeen Cremin is an independent scholar (AUS)

Contributors

Tess Davis is a lawyer and archaeologist and is currently Executive Director of the Antiquities Coalition and teaches cultural property law at Johns Hopkins University (USA).

Ea Darith is Director of the Department of Conservation and Archaeology for the National Authority for Preah Vihear (CAM).

Armand Desbat is Emeritus research director at CNRS (FRA).

Penny Edwards is Professor of Southeast Asian Studies in the Department of South and Southeast Asian Studies at the University of California, Berkeley (USA).

Julia Estève is Lecturer in Department of Global Buddhism, UTK, Institute of Science Innovation and Culture, Bangkok (THA).

Damian Evans is Senior Research Fellow at the École française d'Extrême-Orient in Paris (FRA) and an Honorary Associate in the Department of History, School of Philosophical and Historical Inquiry, Faculty of Arts and Social Sciences, at the University of Sydney (AUS).

Christian Fischer is an independent scholar and Co-Director of the Molecular and Nano Archaeology Lab & Archaeomaterials Group at UCLA (USA).

Roland Fletcher is Professor of Theoretical and World Archaeology at the University of Sydney (AUS).

Gillian Green is an independent scholar. She is immediate past president of the Asian Arts Society of Australia and formerly Honorary Associate in the Department of Art History (AUS).

Kenneth R. Hall is Professor of History at Ball State University (USA).

Tegan Hall is a landscape architect and Lecturer at the Australian Catholic University and the Queensland University of Technology (AUS).

Scott Hawken is Director of the Landscape Architecture and Urban Design Program at the University of Adelaide (AUS).

Mitch Hendrickson is Associate Professor of Anthropology at the University of Illinois at Chicago (USA).

Heng Piphai is Post-Doctoral Fellow at the Cotsen Institute of Archaeology, UCLA (USA).

Trude Jacobsen Gidaszewski is Professor of South and Southeast Asian History and faculty associate in the Center for Southeast Asian Studies, a Title VI National Resource Center, at Northern Illinois University (USA).

Wayne Johnson is Senior Archaeologist with Place Management NSW (Australia) and Archaeological Field Director for Sydney University's Greater Angkor Project (AUS).

Contributors

Sarah Klassen is Marie Skłodowska-Curie Fellow in the Digital Archaeology department at Leiden University (NLD).

Pipad Krajaejun is Assistant Professor in the Department of History, Faculty of Liberal Arts, Thammasat University (THA) and a PhD candidate at SOAS, University of London (UK).

Paul A. Lavy is Associate Professor of Art History at the University of Hawai'i at Mānoa (USA).

Stéphanie Leroy is Senior Researcher in archaeometallurgy at the French National Research Center (FRA).

Ian Lowman is an independent scholar based in Aberdeen, North Carolina (USA).

Eileen Lustig is an independent scholar based in Sydney (AUS).

Terry Lustig is an independent scholar based in Sydney (AUS).

Pierre-Yves Manguin is Emeritus Professor at the École française d'Extrême-Orient, Paris (FRA).

Dan Penny is Associate Professor in the School of Geosciences at the University of Sydney and Co-Director of the Angkor Research Program at the University of Sydney (AUS).

Phlong Pisith is Lecturer at the Faculty of Archaeology, Royal University of Fine Arts, Phnom Penh (CAM).

Phon Kaseka is Director General of the Institute of Humanities and Social Sciences, Royal Academy of Cambodia, Phnom Penh (CAM)

Martin Polkinghorne is a Senior Lecturer in archaeology at Flinders University, Adelaide (AUS).

Christophe Pottier is Associate Professor at the École française d'Extrême-Orient, Paris (FRA).

Sachchidanand Sahai is Resident Scholar at the ASPARA National Authority, Siem Reap (CAM).

Yuni Sato is a researcher at the Nara National Research Institute for Cultural Properties (JPN).

Seng Sonetra is a PhD candidate at the Department of History of Art and Archaeology, SOAS-University of London (UK).

Peter D. Sharrock is a Senior Teaching Fellow in the Department of the History of Art and Archaeology, School of Oriental and African Studies, University of London (UK).

Contributors

Siyonn Sophearith is Lecturer of Cambodian history at the Royal U of Fine Arts and a government official of the Ministry of Culture and Fine Arts, Phnom Penh (CAM).

Nhim Sotheavin is a researcher at the Sophia Asia Center for Research and Human Development, Sophia University, Japan (JPN)

Dominique Soutif is Lecturer of Southeast Asian archeology at the École française d'Extrême-Orient (FRA).

Miriam T. Stark is Professor of Anthropology and Director of the Center for Southeast Asian Studies at the University of Hawai'i at Mānoa (USA).

Edward Swenson is Professor of Anthropology and the Director of the Archaeology Centre at the University of Toronto (CAN).

Yukitsugu Tabata is Professor in the Faculty of Letters, Arts and Sciences at Waseda University, Tokyo (JPN).

Ashley Thompson is Hiram W. Woodward Chair in Southeast Art and Professor in the Department of the History of Art and Archaeology at the School of Oriental and African Studies, University of London (UK).

Pelle Wijker is a doctoral student at Université Paris-1 Panthéon-Sorbonne and the École française d'Extrême-Orient (FRA).

ACKNOWLEDGEMENTS

Chapter 1—Penny & Hall

The authors acknowledge the Cambodian National Authority for the Protection of the Site and the Management of the Region of Angkor (APSARA) for their long-standing support and collaboration. This research is funded by the Australian Research Council and the Australian Nuclear Science and Technology Organisation.

Chapter 2—Soutif & Estève

The research program *Corpus des Inscriptions Khmères* is a collaboration between the École française d'Extrême-Orient (EFEO), the Cambodian National Authority for the Protection of the Site and Management of the Region of Angkor (APSARA), UTK Krungthep, and the Ministry of Culture and Fine Arts of Cambodia. This research has benefited from the financial support of the EFEO and the Dharma project, which has received funding from the European Research Council (ERC) under the European Union's Horizon 2020 research and innovation programme.

Chapter 4—Stark & Manguin

The authors would like to thank their host institutions for supporting their Mekong Delta-based research in Cambodia (Stark) and Vietnam (Manguin). Cambodia's Ministry of Culture and Fine Arts and its Archaeology Faculty of the Royal University of Fine Arts were invaluable throughout the 1996–2009 Lower Mekong Archaeological Project field investigations. Vietnam's Southern Institute of Social Sciences (Ho Chi Minh City) was EFEO's research partner during the work at Óc Eo and surrounding areas. All mistakes remain the authors' responsibility.

Chapter 5—Chevance & Pottier

The authors would like to thank Damian Evans for his careful proofreading; Lionel Courty for the translation; and H.E. Hang Peou, Director-General of the APSARA National Authority, for the unwavering support of APSARA and its departments. The Franco-Khmer Archaeological Mission on the Development of the Angkorian Territory (MAFKATA) is directed by

Acknowledgements

Christophe Pottier and operates in cooperation with APSARA. MAFKATA takes place under the auspices of the French Ministry of Europe and Foreign Affairs through its *Commission des fouilles* and is co-financed by the French School of Asian Studies (EFEO). The Fondation Simone et Cino Del Duca has also supported MAFKATA. The Archaeology and Development Foundation (ADF) is directed by Jean-Baptiste Chevance in partnership with the APSARA National Authority. This research has been partly supported by the Mohamed S. Farsi Foundation.

Chapter 7—Stark & Cremin

Our thanks go to Cambodia's Ministry of Culture and Fine Arts and to APSARA National Authority for supporting our work in Cambodia since 1996, some of which enabled us to produce the scholarship in the chapter.

Chapter 8—Hall & Penny

The authors acknowledge the Cambodian National Authority for the Protection of the Site and the Management of the Region of Angkor (APSARA) for their long-standing support and collaboration. This research is funded by the Australian Research Council and the Australian Nuclear Science and Technology Organisation.

Chapter 10—Evans *et al.*

The authors gratefully acknowledge the support of the Cambodian Ministry of Culture and Fine Arts and its various agencies, as well as the members of the Khmer Archaeology LiDAR Consortium. The contribution of D.E. and P.W. is funded by the European Research Council (ERC) under the European Union's Horizon 2020 research and innovation programme. The contribution of M.P. is funded by the Australian Research Council.

Chapter 11—Hawken & Klassen

The authors acknowledge the Cambodian National Authority for the Protection of the Site and the Management of the Region of Angkor (APSARA) as well as the EFEO, Paris, and UCL, London, for supporting residencies for Dr. Scott Hawken in June and July of 2019. Thanks also to the School of the Built Environment, UNSW, Sydney, for supporting Dr. Scott Hawken's sabbatical. Additionally, the authors acknowledge the Social Sciences and Humanities Research Council of Canada Postdoctoral Fellowship and for supporting residencies for Dr. Sarah Klassen at the University of British Columbia in 2019 and 2020 Dumbarton Oaks Research Library and the Andrew W. Mellon Foundation (Mellon Initiative in Urban Landscape Studies) for supporting a residency in 2018. The authors are particularly grateful to Dr. Eileen Lustig for her thoughtful feedback on an initial draft of the chapter. The authors would also like to thank the editors for their detailed feedback on the various drafts of the chapter.

Chapter 12—Lustig *et al.*

The authors would like to thank Aeedeen Cremin, John Downey, Damian Evans, Marnie Feneley, Nina Hofer, Eileen Lustig, Dan Penny, Sam Player, Martin Polkinghorne, Christophe Pottier, Sakhoeun Sakada, the Royal Angkor Foundation, and Chandana

Acknowledgements

Withannachchi for their comments, criticisms, and readiness to provide us with the benefits of their specialised knowledge.

Chapter 13—Davis & Lustig

The authors would like to acknowledge the late Philip Jenner for the translations of the Khmer inscriptions that are available online through his Pre-Angkorian and Angkorian dictionaries. In addition, the authors would like to thank the US Department of Homeland Security (ICE) for the ability to reprint the image of the Duryodhana sculpture.

Chapter 14—Brotherson

The author wishes to thank the APSARA National Authority and the Greater Angkor Project. Research was funded by the Australian Research Council, the Australian Postgraduate Award, the Carlyle Greenwell Research Fund, and the Endeavour Fellowship. Thanks also to Michael Charney for comments on an early draft of this chapter.

Chapter 15—Chea *et al.*

The research program Yaśodharāśrama is a collaboration between the École française d'Extrême-Orient (EFEO), the University of Toronto, the Cambodian National Authority for the Protection of the Site and Management of the Region of Angkor (APSARA), UTK Krungthep, and the Ministry of Culture and Fine Arts of Cambodia. This research has benefited from the financial support of the EFEO; the Commission des fouilles of the French Ministry of Foreign and European Affairs; the Dharma project, which has received funding from the European Research Council (ERC) under the European Union's Horizon 2020 research and innovation programme; and the Hal Jackman Foundation.

Chapter 16—Chhem *et al.*

The authors gratefully acknowledge the *Canadian Journal of Buddhist Studies*, who gave us permission to adapt parts of Chhem (2007), from which sections of our text were drawn. Funding for this contribution derives in part from the European Research Council (ERC) under the European Union's Horizon 2020 research and innovation programme.

Chapter 17—Lustig *et al.*

The authors would like to acknowledge the late Philip Jenner for the translations of the Khmer inscriptions that are available online through his Pre-Angkorian and Angkorian dictionaries.

Chapter 19—Hawken & Castillo

The authors would like to thank the Cambodian National Authority for the Protection of the Site and Management of the Region of Angkor (APSARA) and Ministry of Culture and Fine Arts for their support. In addition, we thank Dr Eileen Lustig, Sarah Klassen, and the editors of the book for helpful feedback to improve the chapter. Scott Hawken would like to acknowledge both Damian Evans and Christophe Pottier of the EFEO for hosting his stay in Paris during the writing of the chapter and Dorian Fuller, who hosted him at the Institute of Archaeology at

Acknowledgements

UCL in London. This chapter was written with the support of the Faculty of the Built Environment, UNSW Sydney.

Chapter 20—Fischer *et al.*

We thank the Ministry of Culture and Fine Arts of Cambodia, the APSARA National Authority, the National Museum of Cambodia, and the École française d'Extrême-Orient. Special thanks go to Dominique Soutif and Bertrand Porte (EFEO) and to the Cambodian team of the stone workshop at the National Museum of Cambodia. Part of this research was supported through grants from the Robert H.N. Ho Family Foundation, the PSL/Scripta and the Corpus des inscriptions khmères projects, the University of California Los Angeles, and by fellowships from the Andrew W. Mellon Foundation at the Metropolitan Museum of Art and the E.W. Forbes Fund at the Freer Gallery of Art.

Chapter 21—Hendrickson *et al.*

The authors wish to thank the Ministry of Culture and Fine Arts and the APSARA Authority for their long-standing support and continued collaborations. Thanks also to Dominique Soutif at the École française d'Extrême-Orient and the University of Sydney Robert Christie Research Centre, particularly So Malay, in Siem Reap. Funding for this work was provided in part by the National Science Foundation, Agence Nationale de la Recherche, and Robert H.N. Ho Family Foundation Program in Buddhist Studies. Finally, thanks to the National Museum of Cambodia for permission to include the effigy vessel image from their collection.

Chapter 22—Castillo

Thanks to the Cambodian National Authority for the Protection of the Site and Management of the Region of Angkor (APSARA) for their continued support. I would like to thank my colleague and friend Mitch Hendrickson, who continued to push me to finish this chapter and had faith in my work through some difficult times. I would also like to thank my many collaborators: Miriam T. Stark, Alison K. Carter, Martin Polkinghorne, Heng Piphah, Rachna Chhay, and the GAP and INDAP teams.

Chapter 23—Estève

This chapter is part of the Corpus des Inscriptions Khmères research program (<https://cik.efeo.fr/>), in charge of the inventory of 'K. numbers' initiated by George Cœdès (*IC VIII*) and continued by Claude Jacques (1971). It is part of the project Dharma that has received funding from the European Research Council (ERC) under the European Union's Horizon 2020 research and innovation programme.

Chapter 25—Hendrickson *et al.*

The authors would like to acknowledge the late Philip Jenner for the translations of the Khmer inscriptions that are available online through his Pre-Angkorian and Angkorian dictionaries. The authors wish to thank the National Museum of Cambodia in Phnom Penh for permission to publish the image of the buffalo cistern from their collection.

0

PROLOGUE

An Introduction to the Angkorian World

*Mitch Hendrickson, Miriam T. Stark, Damian Evans
with Roland Fletcher*

We have designed this volume as a state-of-the-art summary of research on the Angkorian World for a general readership. Drawing from more than a century of research in several discrete (and only rarely overlapping) disciplines has produced new and exciting views of this important but little-known Asian civilisation. So has inviting this generation of authors from different fields to collaborate in multi-authored chapters. Archaeologists have worked with epigraphers, art historians, and historians to develop innovative and holistic perspectives for this volume that push the boundaries of conventional archaeological research. Angkorian scholarship remains distinct from mainstream archaeological research in its stubbornly interdisciplinary approach and its roots in a particularist French intellectual tradition that emphasised epigraphic and art historical approaches. The fact that most research has also taken place within a heritage context, from the early to mid-20th century EFEO conservation efforts to the post-1992 UNESCO World Heritage era, affects the shape of scholarship. So does the lack of dedicated geographic concessions to different teams (as is sometimes the case in the Near East and Mesoamerica), which has meant that multiple research projects have worked in overlapping areas, with varying degrees of cooperation, to produce competing explanations from the same sites. Such frictions are difficult to navigate but can be intellectually productive; our goal is to highlight the particular kinds of insights that emerge from this context.

Our book comprises 35 original chapters written by leading scholars from Cambodia, the United States, France, Australia, Japan, Canada, the United Kingdom, and Thailand. Despite strenuous efforts at authorial parity and even coverage, we are acutely aware of our volume's shortcomings through its long period of development. Our authorship still skews toward Euroamericans, with fewer Khmer voices than we had hoped. Little room exists in this kind of volume for the conventional culture histories that newcomers to Angkorian studies often seek, which often draw heavily on the Francophone canon that was instrumental to the development of Angkorian research. Limited space has been allocated to some topical debates in Angkorian scholarship, like Groslier's (1979) 'hydraulic city' model and discussions of collapse (e.g. Lucero et al. 2015; Penny et al. 2019). We include a basic timeline of Angkorian history (Figure 0.1) and urge readers to consult previously published overviews, some relatively new (Coe and Evans 2018) and some more established (Briggs 1951; Dagens 2003) for key cultural history, the history of research in the field, and key debates through time. Maps included at the end of this chapter provide the reader with a reference of the spatial extent of the Khmer Empire's

influences (Figure 0.2), its reach, and the location of significant sites mentioned in the text (Figure 0.3). Our editorial mission has been to view the Angkorian World as historical scientists: to inspire new ways of looking at things that acknowledge old paradigms and offer new approaches. The following sections provide rationale for our volume's structure.

Part I: Contexts

This section provides foundational information regarding the study of the Angkorian World, from its heartland (Figure 0.4) to its far reaches. The World's ancient empires all depended on rich local environments, and Angkor is no different. The annual flooding of Cambodia's great lake, the Tonle Sap, fed large populations across the Khmer state, and surrounding regions held myriad forest products that the Chinese sought throughout the polity's lifespan. We have largely limited our focus to the 9th–15th century Angkor Period because of space limitations: our many chapters only graze the surface of scholarship. Some chapters delve into earlier (Pre-Angkorian and prehistoric) developments that were foundational to the Angkorian state. The discussion of early capitals encapsulates the idea of continuity within the larger transformations from small polities to one of the greatest empires in Asian history. Focusing on epigraphic research of minor texts written on objects complements classic research on royal stelae.

We close this section with a discussion of how conventional Angkorian scholarship rendered Cambodian researchers nearly invisible in the study of their own history: despite the fact that French EFEO conservators worked directly with Khmer technical experts (e.g. Falser 2020, 54, 112 for Marchal's conservation work) and despite a florescence in Khmer studies in the mid-20th century (see Dy 2006; Népote 1979; Peycam 2010, 162–64; 2011). This long-standing invisibility was clear even after the Khmer Republic proposed to make Phnom Penh the archaeological centre for a mainland Southeast Asia institute (ARCAFA: Applied Research Centre for Archaeology and Fine Arts or ARCAFA). Only 7 of the 42 individuals listed as specialists in Khmer archaeology for that proposal (SEAMEO 1972, 304–6) were actually Khmer, and of those 7, only 2 were trained as archaeologists (Chea Thay Seng and Roland Mourer). Khmer scholars have gradually become more visible in the last few decades, a development that our chapters seek to illustrate. This transformation includes essential voices that will continue to expand our understanding of Angkor as an empire, a cultural icon, and a heritage site of global significance.

Part II: Landscapes

Here our authors offer broad perspectives on agrarian, hydrological, and demographic contexts of the Angkorian World. Work described in this section's chapters owe much to the extensive archaeological survey programs and remote sensing campaigns that foreign scholars (e.g., those from the EFEO, the Greater Angkor Project, and others) have completed in collaboration with Cambodian institutions, most notably those housed under the Ministry of Culture and Fine Arts (including the APSARA National Authority) and the Royal Academy of Cambodia. The 'lidar revolution' resulting from two separate missions that covered over 2000 km² of Greater Angkor (Figure 0.5) and beyond has set the stage for new visions of early urban centres and their associated water management systems. Patterns of occupation around Angkor, and along one of the most important corridors in the Angkorian World, the Mekong, show a degree of consistency and coherence, as well as variability and adaptation to local conditions. Archaeobotanical studies, still in their infancy in Angkorian research, offer new insights into agriculture, subsistence, and land use that are canvassed in our chapters.

Part III: State Institutions

The chapters in this section examine key social traditions that structured ancient Angkorian society by focusing on its capital, which we call Greater Angkor (Figure 0.5). Angkor's success and emergence as Southeast Asia's largest empire were based in large part on the successful operationalisation of a complex and Indic-tinged system of statecraft. Unravelling the intricate genealogies of Khmer kings and locating their religious, art historical, and architectural legacies in time and space have long been mainstays of the literature on the Angkorian World; instead, our volume focuses on selected social processes that force new understandings of Khmer agency and power. How kings became fully legitimate kings rested on systems of bureaucracy and ritual. As the final arbiter and overseer of land ownership, the king sat at the head of Angkorian legal institutions. Physical representations of Brahmanic and Buddhist deities in the state temples of Angkor were central to the reproduction of royal power; we also see that, beyond the capital, local deities became intertwined with Brahmanical practices across the diverse landscapes of the Angkorian World.

Part IV: Economies

In this section, our contributors focus on the myriad activities and structures that facilitated the rise and functioning of the Angkorian state. Greater Angkor's geographic location was instrumental to its deep occupational history and helps to explain its huge population. Temple transactions and donations recorded in the Khmer-language inscriptions attest to the diverse range of products available in this cashless, barter economy and offer insight into the relative value of certain goods. The primacy of rice is attested to both in these records and in the vast landscape of wet-rice agricultural systems that stretch across the lake's northern margins. Tracing the spatial organisation and orientation of these field systems offers insights into the complexity of farming practices and provides another glimpse at the palimpsest history of occupation in Greater Angkor. The Khmer also produced a range of material culture that would come to define their legacy in mainland Southeast Asia, including distinct green and brown glazed ceramics, metal objects, and their iconic masonry temples. The systematic expansion of archaeological field research beyond Angkor has allowed us to pinpoint the sources for some of these products and identify widespread pyrotechnological activity across the Khmer territories, including the region south of Phnom Penh. The discovery of dozens of stoneware ceramic kilns and hundreds of iron smelting mounds illustrates shifting scales of production and how demand for different types of material was linked to major periods of expansion, particularly during the 12th century and the reign of Jayavarman VII. New approaches to the study of sandstone, the building material of choice for the Khmers from the 11th century onwards, also reveal the complex and dynamic interplay between resource availability, architectural transformations, and the historical trajectory of the Khmer Empire.

Part V: Ideologies and Realities

The contributions here survey belief systems that underpinned Angkor's merging of religion and state and examine key structuring principles like gender, ideology, and social organisation. As with other premodern states in mainland Southeast Asia, Angkorian people selectively integrated Indic beliefs and practices into their own specific cultural milieux. Conventional Angkorian scholarship emphasises a syncretic fusion of Hindu/Buddhist and local beliefs as

a form of ‘Hindicisation’ (from Georges Cœdès’ classic works [see e.g. Cœdès 1968]). More recent research instead emphasises pluralism, and a kind of ‘indigenization’ in which Khmer elites selected key foreign elements that supported their political goals and Worldview. The beautiful statues that served as foci for religious veneration in the Pre-Angkor and Angkor Periods are now counted among Southeast Asia’s greatest artistic achievements. Our contributors elaborate in detail on their manufacture and elucidate the roles these images played in social and political reproduction across the Angkorian World. One chapter explores roles that key animals like bovines (cattle and water buffalo) played in Angkor’s ritual and political economies. Other chapters use material culture and stylistic traditions to map the geographic boundaries of the Khmer polity. Attention then turns to daily life for Angkorian Khmers within and beyond temple walls, from sartorial expressions to gender roles. Image, performance, and agency all shaped daily life in the Angkorian World, and it is this aggregate that our authors study as long-term history.

Part VI After Angkor

This final section challenges the conventional ‘collapse’ view of Angkor and threads together the centuries-long denouement of the Angkorian period with subsequent developments in Cambodian and Southeast Asian history. Conventional scholarship has long depended on the European ‘discovery’ of Angkor and on a catastrophic 15th-century ‘collapse’: two concepts that our authors challenge using environmental and archaeological data from micro to landscape scale. Research on urbanism in Greater Angkor chronicles the decline of this capital, its continued occupation, and a demographic shift south to take advantage of growing maritime networks through capitals at Longvek and ultimately Phnom Penh. Other chapters use art, architecture, epigraphy, and religion to explore Angkorian legacies in the 16th–17th century polities that flourished in the territories of the former Empire. Finally, we underscore that the period ‘after Angkor’ continues to the present day in Khmer religious practice. This resilience and continuity is illustrated by the enduring presence of Yama, a minor god during the time of the Empire, who now occupies a central role in Khmer Buddhist practice. More than just an immutable assemblage of massive and durable stone monuments, Angkor has always been a canvas upon which to elaborate particular ways of looking at and thinking about the past, and our final contributions trace some of the ways in which ideas about Angkor are expressed in contemporary Cambodian society and culture.

Perspectives

A recurring theme in accounts of Angkor, from the earliest times until the present day, has been amazement and fascination with the prodigious scope of what was achieved, which by certain measures appears to be without parallel in the pre-industrial world. But the sheer scale of Angkor has given rise to its own set of theoretical and methodological problems. Historically, the precious and finite resources that we have available for investigations on the ground have focused on a handful of great temples in the urban centres of places like Angkor, and the artworks and inscriptions they contain, at the expense of the many thousands of smaller Angkorian shrines that sprawl across the Angkorian World. By focusing on the largest of the monuments, researchers have typically ignored the traces of communities and their everyday life that remain inscribed on the surface of the landscape, which are literally and figuratively overshadowed by the stone temples. Because of the unique scale of Angkor, conceptual and definitional problems abound.

Prologue

As one example, the urban structure of Angkor itself defies easy categorisation: zoomed out to a certain extent, it resembles a sprawling and integrated ‘city’ of the kind we are now familiar with in the contemporary world: however, it is fully two orders of magnitude more extensive than other ‘cities’ of the pre-modern world. Zooming in for more detail, Angkor Thom (and the Yasodharapura area, Figure 0.6) is a complicated mosaic of urban and rural space, with smaller urban centres that reflect the macro pattern of the settlement complex while also evincing specific local characteristics (Evans et al. 2007). Recent research has underscored the inherent tension in considering Angkor at different scales of time and space: on one level, the layout of Angkor is deliberate and reflects the designs of kings and the religious imperatives of the Angkorian state; on another level, it is the aggregate outcome of countless individual decisions over centuries (Klassen and Evans 2020). The functioning whole has emergent properties—material inertia and systemic vulnerability arising from centuries of reconfiguring the Earth’s surface at regional scale (Penny et al. 2018)—that cannot readily or usefully be reduced to the beliefs and designs of individual kings, nor of farmers.

Recognising such differences in analytical scales is critically important to generating robust new insights about Angkor, particularly in identifying correspondences and non-correspondences between different lines of data (Fletcher and Evans 2012). Details matter, from the specific moment when an inscription was completed, associated with the specific intentions of an individual in the larger socio-political context in which they worked; through the schedules of daily routes and walking distances to collect water; the timing of 5–6-km travel distances to and from markets and workplaces; the fortnightly shifts of thousands of people across Angkor with the waxing and waning of the moon; up to the slow incessant movement of water through the canal networks. Angkor’s space and time were structured and organised at different magnitudes. So were the products of long-term aggregate labour investment: if Angkor Wat temple was really constructed in three to four decades, as one interpretation of the inscriptions might suggest, labourers must have moved around 200 blocks of two to three tons, every single day, all year round—a feat that few quarry masters can match even today. The masonry of the towers on top of Ta Keo temple alone is estimated to weigh 6000 metric tons. Scaling further out, the West Baray held approximately 55 million cubic metres of water, and its banks extending for about 20 km contained over 12 million cubic metres of deposit. Thousands of human workers, working months and even years, moved these enormous quantities of materials (Pottier 2000, 104,114). Charismatic and effective rulers were necessary for Angkorian society to complete these projects, particularly their association of the Khmer ruler with the *devarāja* (god-king) and view of him as their *cakravartin* (universal ruler). On the other hand, it is likely that the everyday life of ordinary citizens over the centuries unfolded in much the same way regardless of which king sat on the throne or the specific gods to whom he professed devotion.

Temporal scales also vary broadly, from the duration of a single temple’s construction to the lifespan of interaction and communication systems. Trade networks that moved textiles from South Asia and China to Angkor lasted for centuries. The Medieval Warm Phase, a period of oscillating higher global temperatures, lasted nearly five centuries. Greater Angkor’s water system had a still longer duration, commencing at least with the establishment of Bhavapura with its proto-baray in the 8th century (Fletcher and Pottier 2022, 728–31) and continuing to the eventual abandonment of its last portion in Angkor Thom in the late 16th century (Groslier 1958). Ceramics were traded into Cambodia from China before the 9th century, and the circulation of this material culture continued beyond the demise of Greater Angkor (Brotherson 2019). Underlying all these developments was a rice-based agrarian foundation that reached Southeast Asia no later

than the early second millennium BCE (Fuller and Castillo 2022) and created a sophisticated local ecology that facilitated surpluses needed to feed the city. This system was embedded in a much older story of the cropping of floating rice and flood recession rice, which has a long ancestry in the seasonally inundated lowlands of the lower Mekong Basin (Fox and Ledgerwood 1999).

Long-standing approaches to art history, inscriptions, and architecture might seem to offer few insights to many of these questions. Inscriptions, for example, while extraordinarily rich in detail on some aspects of Angkorian society, are frustratingly silent on things like the production of material like iron and ceramics, on water management, on the beliefs and perspectives of non-elites, and on the mechanics of society beyond temples and the royal court. On the other hand, several contributions to this volume underscore the value of using innovative approaches, informed by fields such as digital humanities, anthropology, and the applied sciences, to reap new information from sources that have been intensively studied for a century or more. Quantitative analysis of vocabulary and material culture in inscriptions now allow us to track social and economic changes across time and space (Lustig and Lustig 2019), for example, while studies of the geochemistry of ceramics and iron and petrographic analyses of sandstone allow us to connect artefacts to the specific groups people who produced and used them (Leroy et al. 2018; Polkinghorne et al. 2015).

Archaeology continues to play an outsize role in filling in the gaps in our knowledge that remain, but we must be clear-eyed about its limitations, especially given the ephemeral and non-durable nature of most Khmer material culture. We must also reframe the research questions that we ask, since there are a range of compelling and important questions to which we will almost certainly never know the answers. Scholars working elsewhere in the premodern world have demonstrated the importance of studying slavery, health, and mobility in the maintenance of ancient cities and their states. Yet Angkorian mortuary practices—the systematic cremation of the dead—preclude their study. We have no texts that provide insight into whether, and to what extent, belief systems promoted by kings were accepted by the general population or the degree to which the vast investments of labour in temple construction were motivated by devotion or servitude. Urban anatomy, from neighbourhoods to urban sectors, remains a challenge for Angkorian researchers to parse. Deciphering provincial dynamics, from economic organisation to linkages to the capital, requires more work. So does understanding the structure of the agrarian economy that supported the emergence and functioning of the capital. We hope that these chapters inspire the next generation of researchers to begin their research journeys into the Angkorian World.

Every volume in this Routledge series synthesises vast bodies of scholarship on a given ‘World’, and most draw from an array of disciplinary approaches that we also tap in this volume. Much of what makes Angkorian research important and difficult is not commonly found across the scholarly communities who crafted previous volumes. These include the impact of Angkor’s colonial origins and legacies in current research practice, tensions between particularistic and comparative approaches, and geopolitical dynamics translated into scholarly conflicts. As in so many other archaeological research contexts, we currently lack unified or coherent systems for data collection, data access, and collections management. Yet some challenges seem unique to our field of Angkorian studies, from methodological challenges (and accomplishments) born of work in post-conflict land-mined regions, pressures to pursue less invasive research strategies in World Heritage properties, and an archaeological heritage that its descendant community so values that nearly every national flag since the mid-19th century has included Angkor’s silhouette. Archaeology and heritage interdigitate in the Angkorian World to inspire both the kind of pride that encourages Khmers to become archaeologists and nationalism that occasionally also provokes armed conflict.

Prologue

DATE	PERIOD	MAJOR RULERS	SIGNIFICANT DEVELOPMENTS	
1900	Protectorate	Norodom Ang Duong	1863 Treaty with French Phnom Penh the capital	
1800				
1700				
1600	Early Modern/ Middle	Ang Chan	Udong the capital	
1500			Longvek the capital; Rededication of Angkor	
1400	Angkor	Sūryavarman II	Khmer court moves south Thai attacks on Angkor	
1300			Jayavarman VIII	Zhou Dakuan account of Angkor
1200			Jayavarman VII	Angkor Thom Civil war/Cham invasion of Angkor
1100			Sūryavarman I	Angkor Wat
1000			Rajendravarman II	Baphuon
900			Jayavarman IV	Yaśodharapura the capital; Pre Rup Koh Ker the capital; Prasat Thom
800	Pre-Angkor	Yaśovarman I	Yaśodharapura the capital; Bakheng	
700		Indravarman I	Harīharālaya the capital; Bakong Mahendraparvata the capital; Rong Chen Founding of the Khmer Empire	
600	'Chenla/Zhenla'	Jayavarman II		
500		Jayadevi		
400		Jayavarman I		
300	'Funan/ Fou-nan'	Iśanavarman	Iśanapura (Sambor Prei Kuk) a capital	
200		Bhavavarman I		
100	Protohistoric/ Prehistoric	Rudravarman		
0				

Figure 0.1 Timeline of the Angkorian World.

Navigating these challenges takes mindfulness, and we close by offering thoughts about the kind of future research we hope will expand our views of the Angkorian World. At the pragmatic level, more local engagement and less international oversight is needed to decolonise the study of Angkorian heritage field and hear local voices. Standardised researcher protocols, ranging from research ethics to data management systems, would strengthen the field and enhance the research value of more than a century of research collections. As several scholars have argued (see e.g. Heng and Phon 2017; Stark and Piphala 2017), we must eradicate persistent asymmetries between foreign and local researchers in Angkorian studies to move forward. As we commit to doing so, it will not be sufficient to simply dismiss the scholarship that has come before as ‘colonial’, which is obviously and necessarily true: the hard work that confronts us is to systematically and rigorously reappraise the archaeological record and to critically evaluate what is of enduring value and what is not.

We end with a note on chronological terminology. The timeline (Figure 0.1) is broadly divisible into Prehistoric and Early Historic. Culturally we speak of Pre-Angkor (6th to 8th c. CE) and Angkor Periods (9th to mid-15th c. CE), followed by the Early Modern or Middle Period (16th to 19th c. CE). Historians have also identified different phases within the Early Historic Period that correspond to the rise of state-level political entities, including *Funan* (4th to 5th c. CE) and *Chenla* (6th to 8th c. CE). Different meanings of these terms are described in detail elsewhere (Jacques 1979; Vickery 1986). References to late Angkor typically are associated with the late 13th to 15th century and are typically associated with the decline of the Empire.



Figure 0.2 South and Southeast Asia, showing key sites.

Prologue



Figure 0.3 Southeast Asia, showing key sites.



Figure 0.4 Heartland of the Khmer Empire, showing key sites and extent of the Angkorian road system.

Prologue

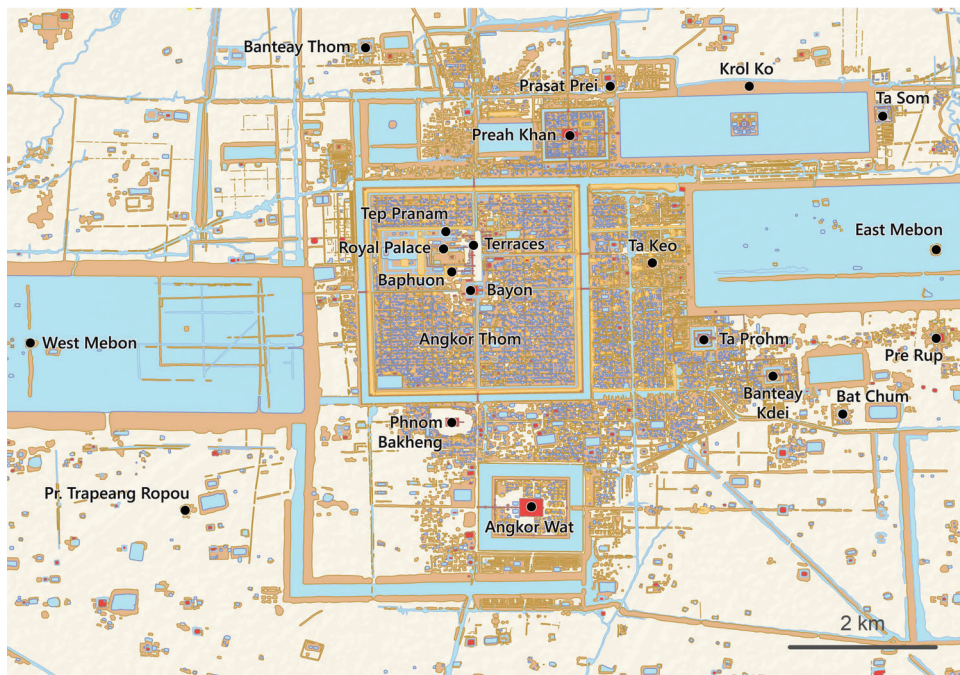
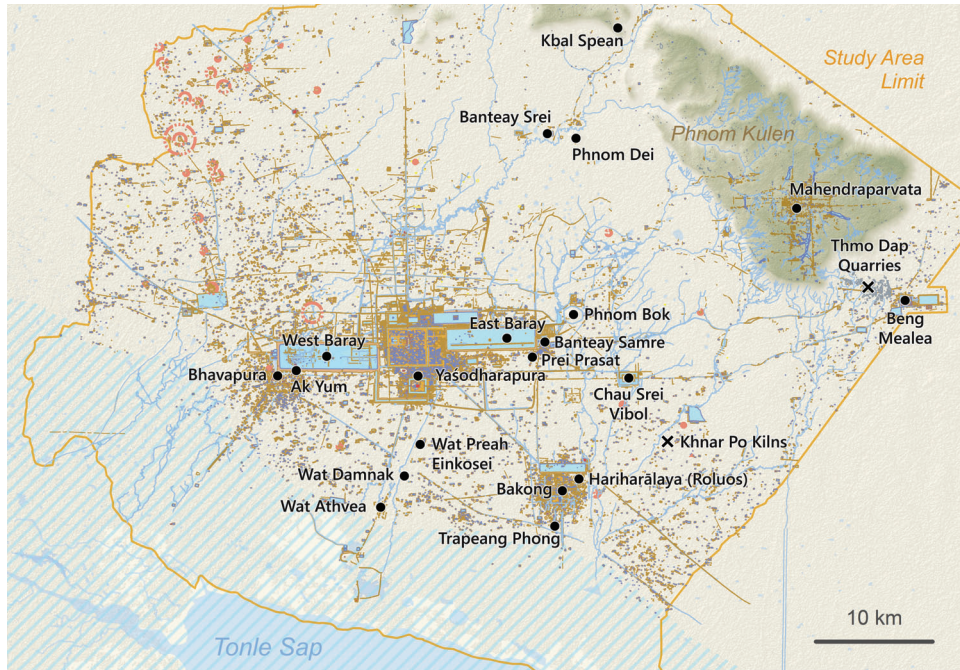


Figure 0.5 Greater Angkor, showing major temple sites and the extent of infrastructure.



Figure 0.6 Capital region of Yaśodharapura, highlighting the urban layout in and around Angkor Thom and Angkor Wat.

Prologue

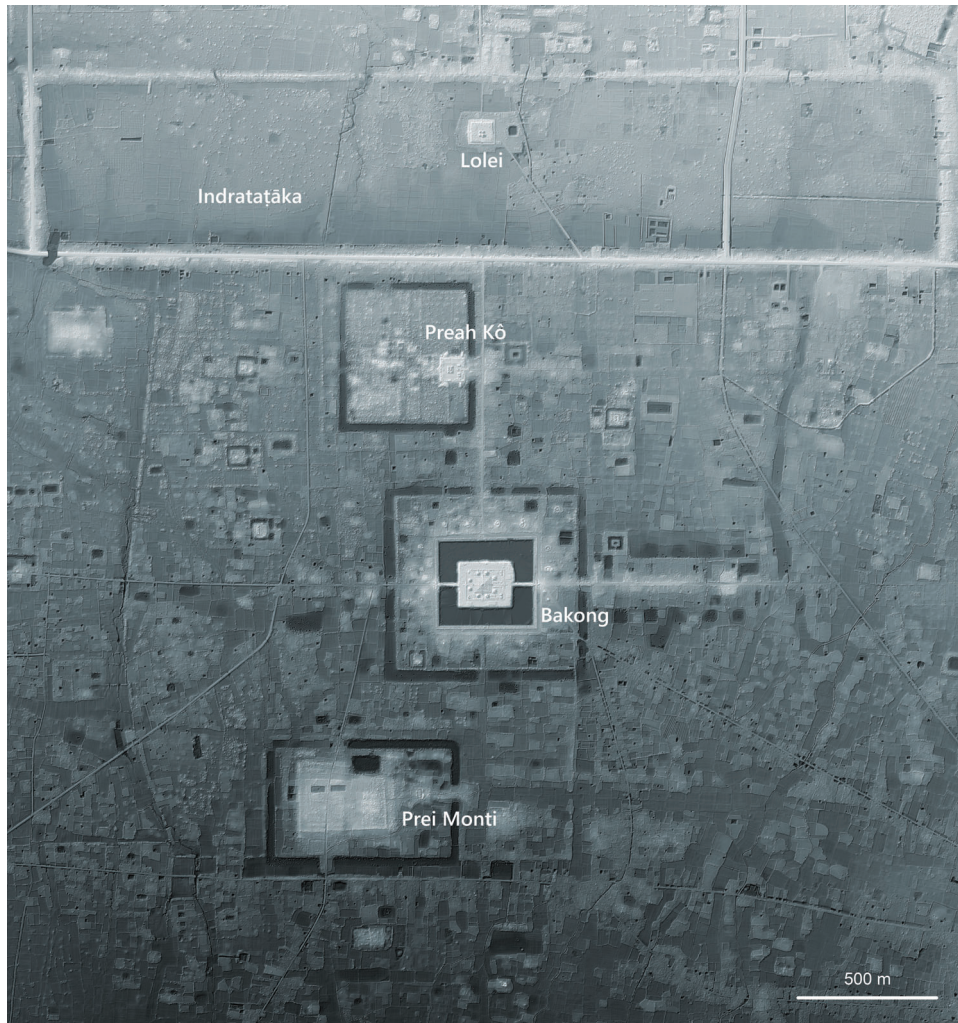


Figure 0.7 Capital region of Hariharālaya (Roluos).

Funding

Funding for this contribution derives in part from the European Research Council (ERC) under the European Union's Horizon 2020 research and innovation programme (grant agreements 639828 and 866454).

References

- Briggs, L.P., 1951. *The Ancient Khmer Empire*. Bangkok: White Lotus.
- Brotherson, D., 2019. *Commerce, the capital, & community: trade ceramics, settlement patterns & continuity throughout the demise of Angkor*. PhD thesis, Department of Archaeology, University of Sydney.
- Coe, M. & D. Evans, 2018. *Angkor and the Khmer Civilization*. London: Thames & Hudson.
- Cœdès, G., 1968. *The Indianized States of Southeast Asia*. Honolulu: The University Press of Hawaii.
- Dagens, B., 2003. *Les Khmers*. Paris: Les Belles Lettres.
- Dy, K.H., 2006. Suzanne Karpelès and the Buddhist institute. *Sikṣācakr: the Journal of Cambodia Research* 8–9, 55–9.

- Evans, D., C. Pottier, R. Fletcher, S. Hensley, I. Tapley, A. Milne & M. Barbetti, 2007. A comprehensive archaeological map of the World's largest preindustrial settlement complex at Angkor, Cambodia. *Proceedings of the National Academy of Sciences* 104(36), 14277–82.
- Falser, M., 2020. *Angkor Wat—A Transcultural History of Heritage: volume 2: Angkor in Cambodia. From Jungle Find to Global Icon*. Berlin/Boston: Walter de Gruyter GmbH & Co KG.
- Fletcher, R.J. & D. Evans, 2012. The dynamics of Angkor and its landscape: issues of scale, non-correspondence and outcome, in *Old Myths and New Approaches: Interpreting Ancient Religious Sites in Southeast Asia*, ed. A. Haendel. Clayton: Monash University Publishing, 42–62.
- Fletcher, R. & C. Pottier, 2022. Angkor: a provisional map history of greater Angkor from ancestry to transformation, in *The Oxford Handbook of Early Southeast Asia*, eds. C.F.W. Higham & N.C. Kim. New York: Oxford University Press, 703–31.
- Fox, J. & J. Ledgerwood, 1999. Dry-season flood-recession rice in the Mekong Delta: two thousand years of sustainable agriculture? *Asian Perspectives* 38(1), 37–50.
- Fuller, D.Q. & C.C. Castillo, 2022. Cereals of Southeast Asia, in *The Oxford Handbook of Early Southeast Asia*, eds. C.F.W. Higham & N.C. Kim. New York: Oxford University Press, 209–320.
- Groslier, B.-P., 1958. *Angkor et Le Cambodge au XVIe Siècle d'après Les Sources Portugaises et Espagnoles*. Paris: Presses universitaires de France.
- Groslier, B.-P., 1979. La cité hydraulique angkorienne: exploitation ou surexploitation du sol? *Bulletin de l'École française d'Extrême-Orient* 66, 161–202.
- Heng, P. & K. Phon, 2017. The position of Cambodian archaeology in current sociopolitical context, in *Handbook of East and Southeast Asian Archaeology*, eds. J. Habu, P.V. Lape & J.W. Olsen. New York: Springer, 83–7.
- Jacques, C., 1979. 'Funan', 'Zhenla': the reality concealed by these Chinese views of Indochina, in *Early South East Asia: Essays in Archaeology, History and Historical Geography*, eds. R.B. Smith & W. Watson. Oxford: Oxford University Press, 371–79.
- Klassen, S.E. & D.H. Evans, 2020. Top-down and bottom-up water management: a diachronic model of changing water management strategies at Angkor, Cambodia. *Journal of Anthropological Archaeology* 58, June.
- Leroy, S., M. Hendrickson, S. Bauvais, E. Vega, T. Blanchet, A. Disser & E. Delque-Kolic, 2018. The ties that bind: archaeometallurgical typology of architectural crampons as a method for reconstructing the iron economy of Angkor, Cambodia (tenth to thirteenth c.). *Archaeological and Anthropological Sciences* 10(8), 2137–57.
- Lucero, L.J., R. Fletcher & R. Coningham, 2015. From 'collapse' to urban diaspora: the transformation of low-density, dispersed agrarian urbanism. *Antiquity* 89(347), 1139–54.
- Lustig, E. & T. Lustig, 2019. Losing ground: decline of Angkor's middle-level officials. *Journal of Southeast Asian Studies* 50(3), 409–30.
- Népote, J., 1979. Education et développement dans le Cambodge moderne. *Mondes En Développement* 28, 767–92.
- Penny, D., C. Zachreson, R. Fletcher, D. Lau, J.T. Lizier, N. Fischer, D. Evans, C. Pottier & M. Prokopenko, 2018. The demise of Angkor: systemic vulnerability of urban infrastructure to climatic variations, *Science Advances* 4(10), eaau4029.
- Penny, D., T. Hall, D. Evans & M. Polkinghorne, 2019. Geoarchaeological evidence from Angkor, Cambodia, reveals a gradual decline rather than a catastrophic 15th-century collapse. *Proceedings of the National Academy of Sciences* 116(11), 4871–76.
- Peycam, P.M.F., 2010. Sketching an institutional history of academic knowledge production in Cambodia (1863–2009)—Part 1. *Sojourn: Journal of Social Issues in Southeast Asia* 25(2), 153–77.
- Peycam, P.M.F., 2011. Sketching an institutional history of academic knowledge production in Cambodia (1863–2009)—Part 2. *Sojourn: Journal of Social Issues in Southeast Asia* 26(1), 16–35.
- Polkinghorne, M., J.G. Douglas & F. Carò, 2015. Carving at the capital: a stone workshop at Hariharālaya, Angkor. *Bulletin de l'École française d'Extrême-Orient* 101(1), 55–90.
- Pottier, C., 2000. Some evidence of an inter-relationship between hydraulic features and rice field patterns at Angkor during ancient times. *Journal of Sophia Asian Studies* 18, 99–120.
- SEAMEO, 1972. *Final Report*, volume II. *Preparatory Conference on the Restoration and Animation of Historical Sites* (Phnom Penh, December 4–8, 1972). Phnom Penh: Government of the Khmer Republic and SEAMEO.
- Stark, M. & P. Heng, 2017. An archaeological perspective on heritage and capacity-building in Cambodia, in *Post-Conflict Archaeology and Cultural Heritage: Rebuilding Knowledge, Memory and Community from War-Damaged Material Culture*, eds. P. Newson & R. Young. New York: Routledge Press, Taylor & Francis, 195–216.
- Vickery, M., 1986. Some remarks on early state formation in Cambodia, in *Southeast Asia in the 9th to 14th Centuries*, eds. D.G. Marr & A.C. Milner. Singapore: Institute of Southeast Asian Studies, 95–115.