



HAL
open science

The deformation monitoring of the Arles Rhone 3 Roman barge

Daniela Peloso, Marie-Laure Courboules, Vincent Dumas

► **To cite this version:**

Daniela Peloso, Marie-Laure Courboules, Vincent Dumas. The deformation monitoring of the Arles Rhone 3 Roman barge. The 14th ICOM-CC Wet Organic Archaeological Materials (WOAM) Working Group Conference, The Mary Rose Trust; Historic England, May 2019, Portsmouth, United Kingdom. hal-04104272

HAL Id: hal-04104272

<https://hal.science/hal-04104272>

Submitted on 23 May 2023

HAL is a multi-disciplinary open access archive for the deposit and dissemination of scientific research documents, whether they are published or not. The documents may come from teaching and research institutions in France or abroad, or from public or private research centers.

L'archive ouverte pluridisciplinaire **HAL**, est destinée au dépôt et à la diffusion de documents scientifiques de niveau recherche, publiés ou non, émanant des établissements d'enseignement et de recherche français ou étrangers, des laboratoires publics ou privés.

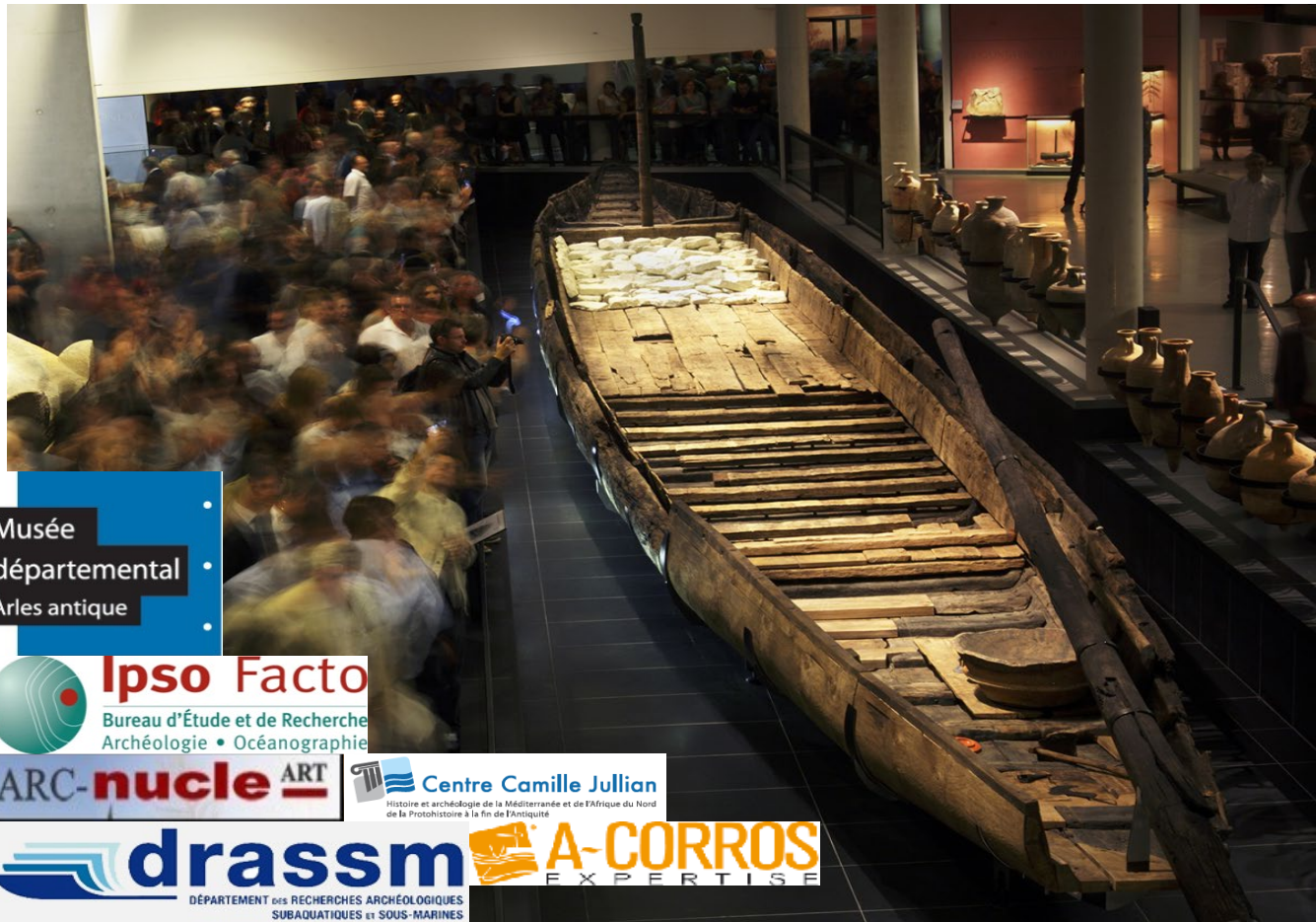


14th ICOM-CC Wet Organic Archaeological Materials Working Group Conference

The deformation monitoring of the Arles Rhone 3 Roman barge

D. Peloso, M-L Courboulès, V. Dumas

introduced by A. Colson and H. Bernard Maugiron



Musée
départemental
Arles antique

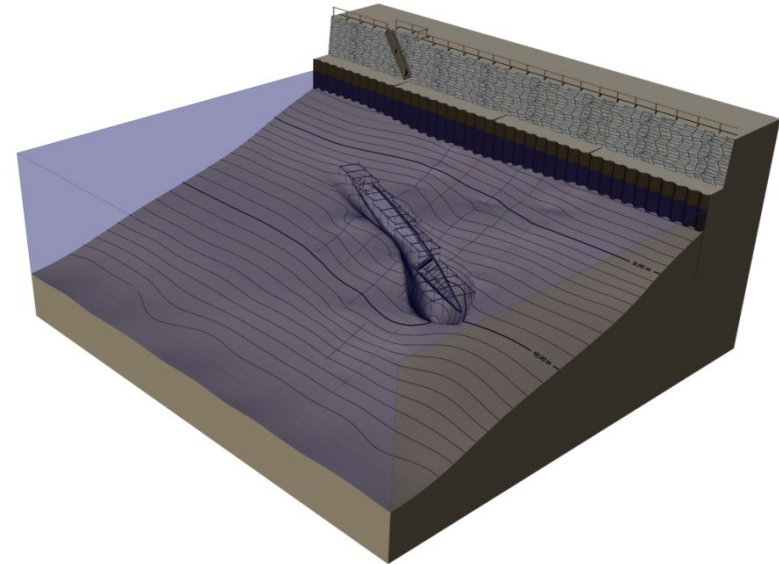
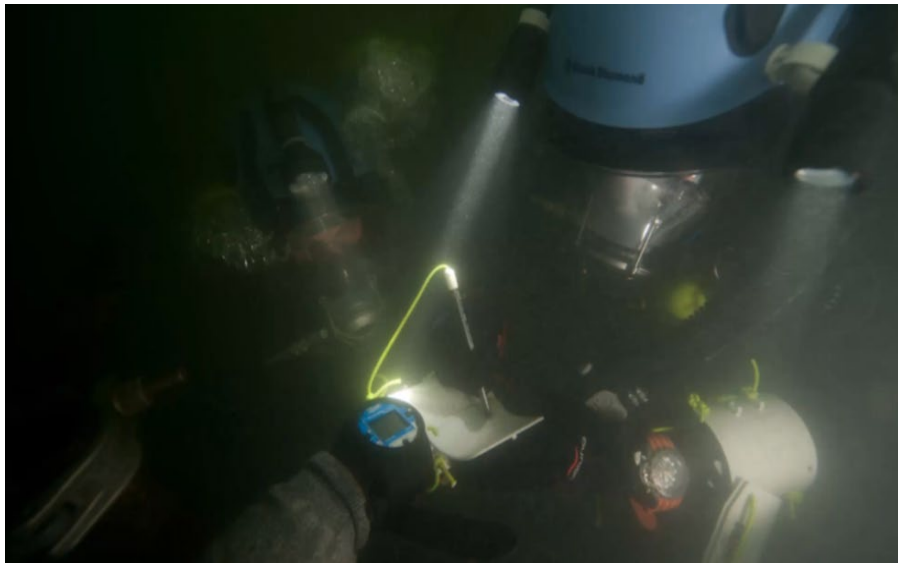
 **Ipsos Facto**
Bureau d'Étude et de Recherche
Archéologie • Océanographie

ARC-nucle ART

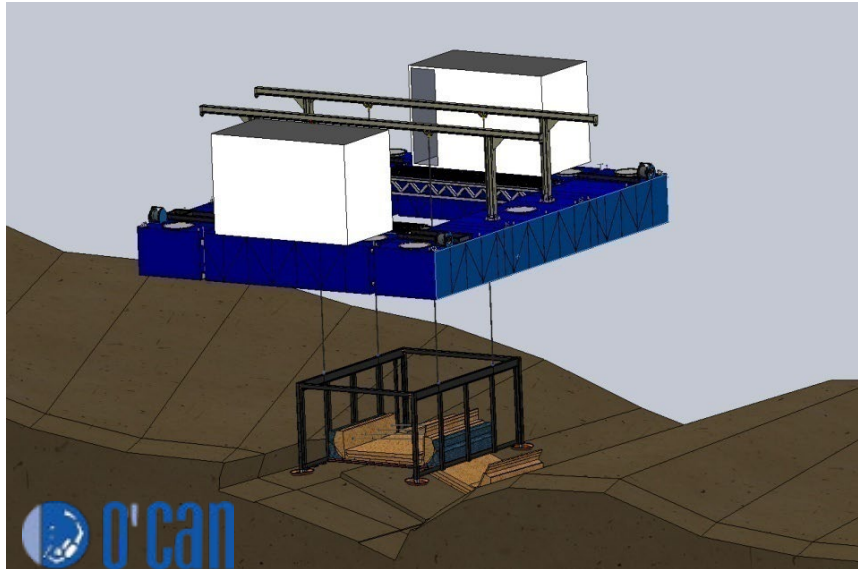
 **Centre Camille Jullian**
Histoire et archéologie de la Méditerranée et de l'Afrique du Nord
de la Protohistoire à la fin de l'Antiquité

 **drassm**  **A-CORROS**
EXPERTISE
DÉPARTEMENT DES RECHERCHES ARCHÉOLOGIQUES
SUBAQUATIQUES et SOUS-MARINES

Discovery and excavations in the Rhône river

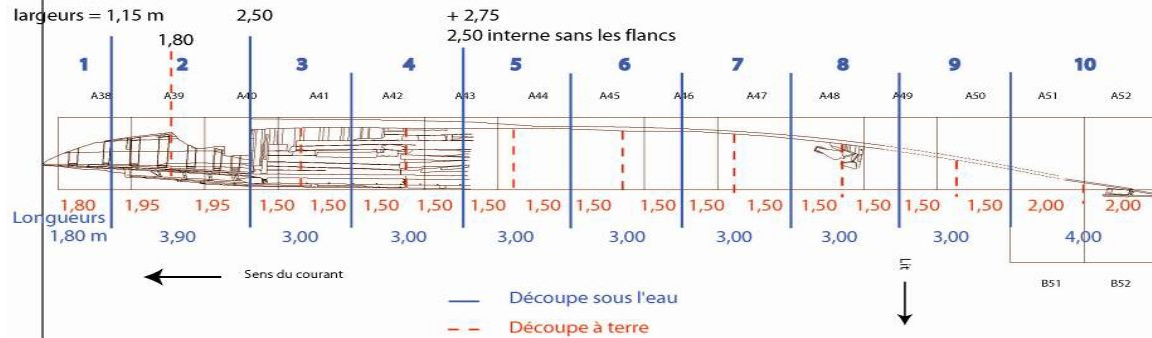


The excavation and raising of the river



Arles-Rhône 3

0 2,00 4,00 m
Longueur totale = 30,70 m



14th ICOM-CC Wet Organic Archaeological Materials Working Group Conference

The deformation monitoring of the Arles Rhone 3 Roman barge



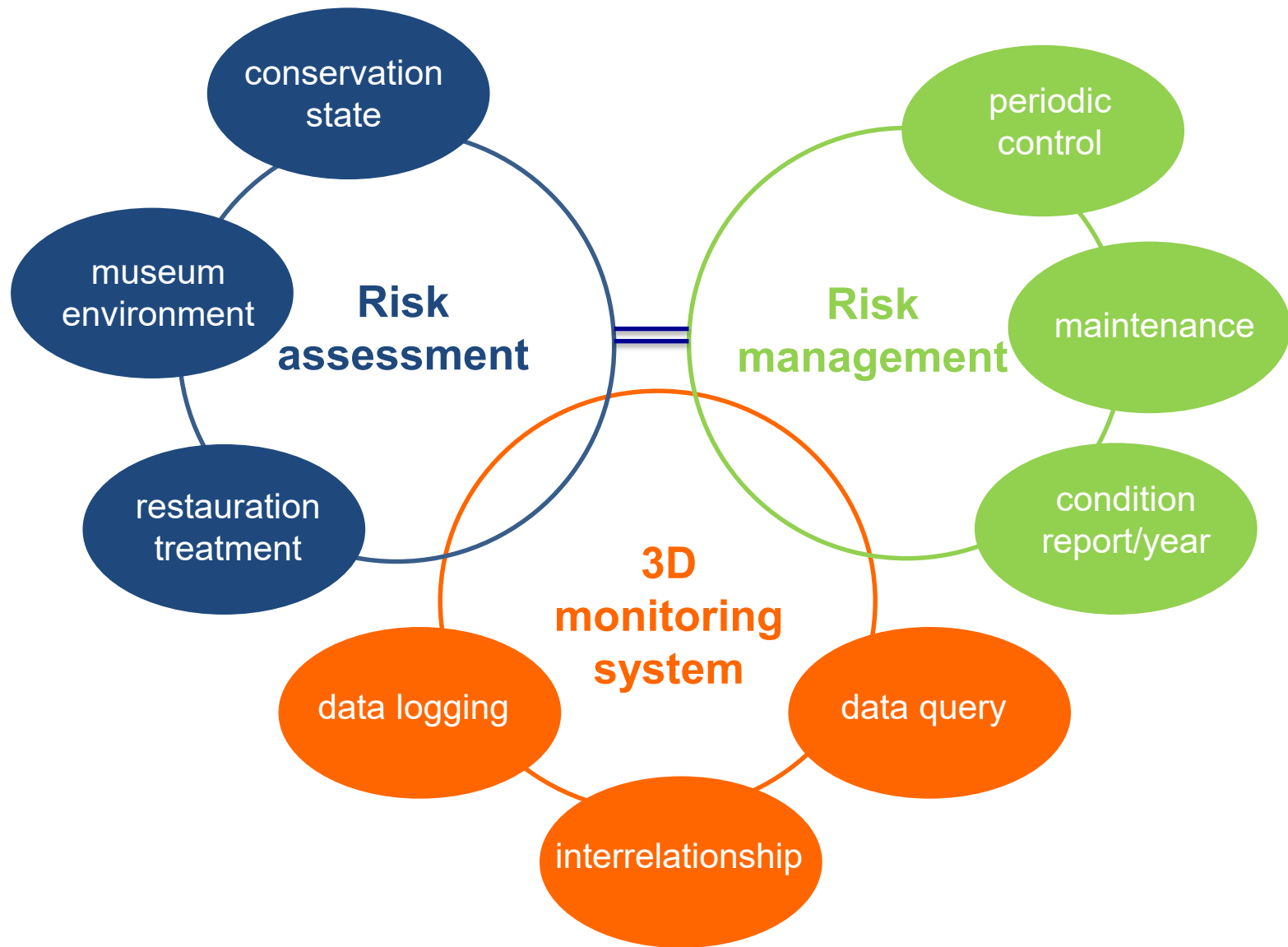
Conservation treatment and laboratory processing



The boat in the museum



Background of the “Arles Rhône 3” monitoring protocol since 2013



The “Arles Rhône 3” monitoring protocol (2015/2019)



The “Arles Rhône 3” monitoring protocol step by step



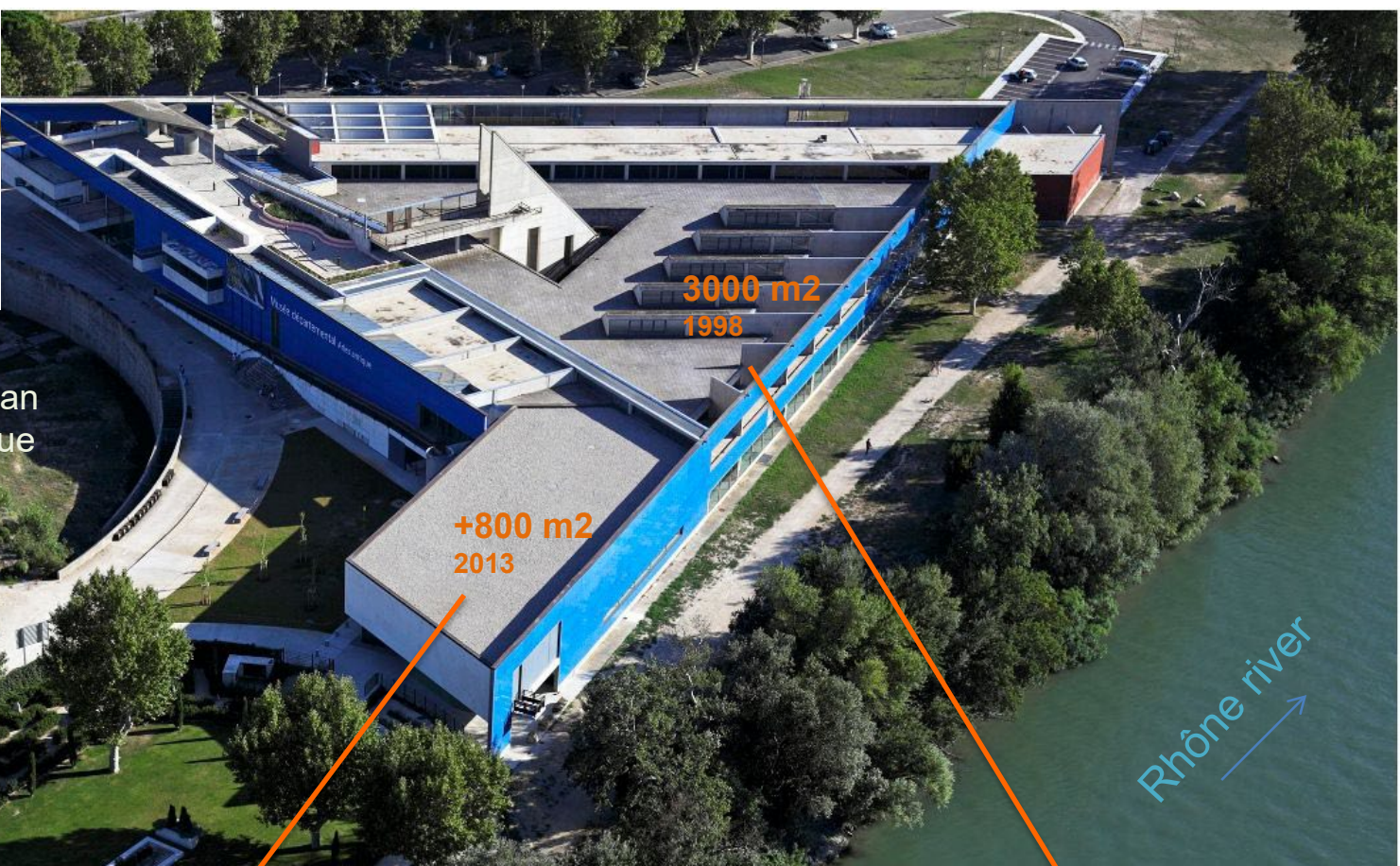
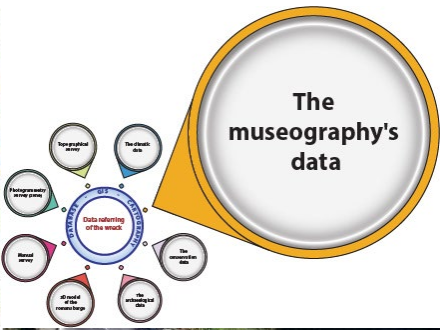


Manual measurements between sections



2013 à 2016 (section T9-T8)

Nominal		Insatisfaisant		Nul	
Satisfaisant		Avertissement		Calcut	
Type					
	T8/T9 bâbord		T8/T9 tribord		
	T8A014 n°5 et T8A015 n°5				
État de	T8A014 n°5 : mesure entre têtes épingles 12,1cm écartement : 1,20m ; T8A015 n°5 : mesure entre têtes épingles 12,17cm écartement : 1,80m		joint T8/T9 : bords encore bien serrés ; fissure en haut à gauche du bras de soutien		
	4,80m				
	T8A014 n°5 : mesure entre têtes épingles 12,8cm écartement : 1,30m ; T8A015 n°5 : mesure entre têtes épingles 12,8cm écartement : 1,40m		Bords encore serrés		
	T8A014 n°5 : mesure entre têtes épingles 12,80cm écartement : 1,82cm ; T8A015 n°5 : mesure entre têtes épingles 12,8cm écartement : 1,43cm		Bords serrés, T8 semble peu maintenu par le bras et fissure à surveiller		
	T8A014 n°5 : mesure entre têtes épingles 12,788cm T8A015 n°5 : mesure entre têtes épingles 12,742cm				



14th ICOM-CC Wet Organic Archaeological Materials Working Group Conference

The deformation monitoring of the Arles Rhone 3 Roman barge

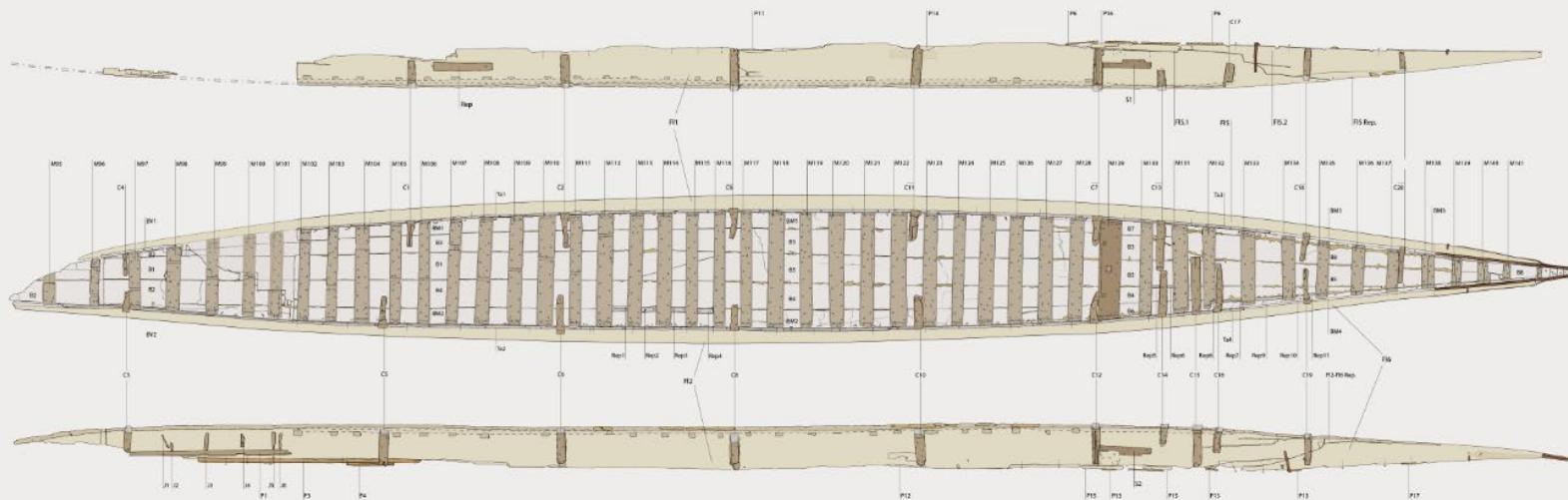
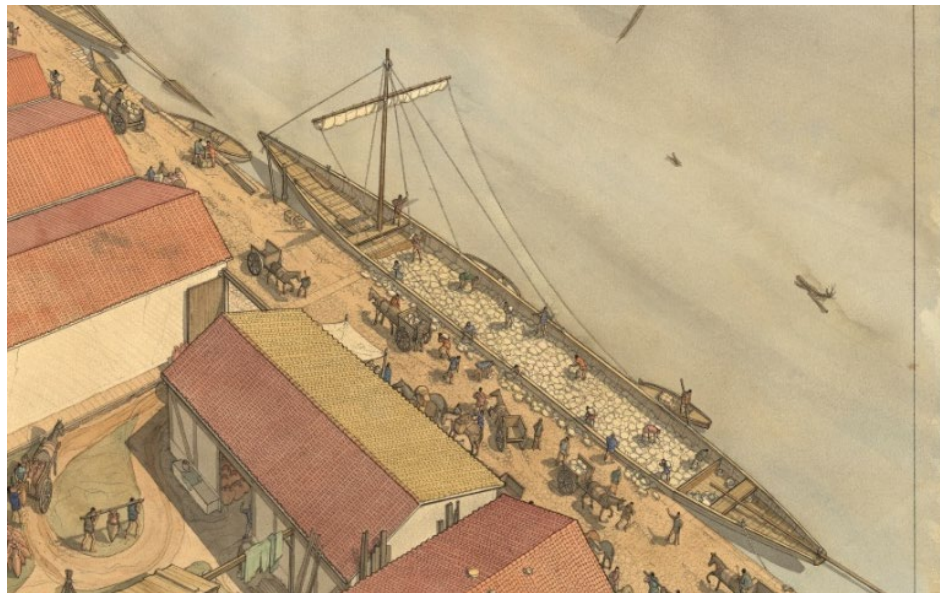
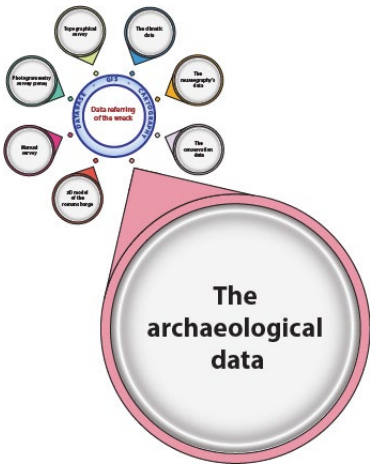




14th ICOM-CC Wet Organic Archaeological Materials Working Group Conference

The deformation monitoring of the Arles Rhone 3 Roman barge

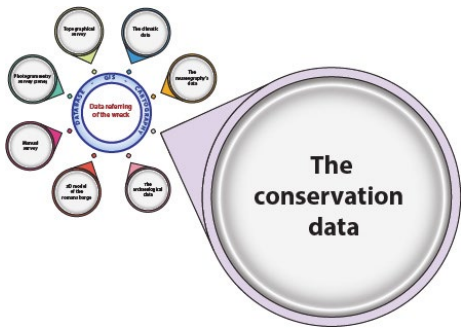




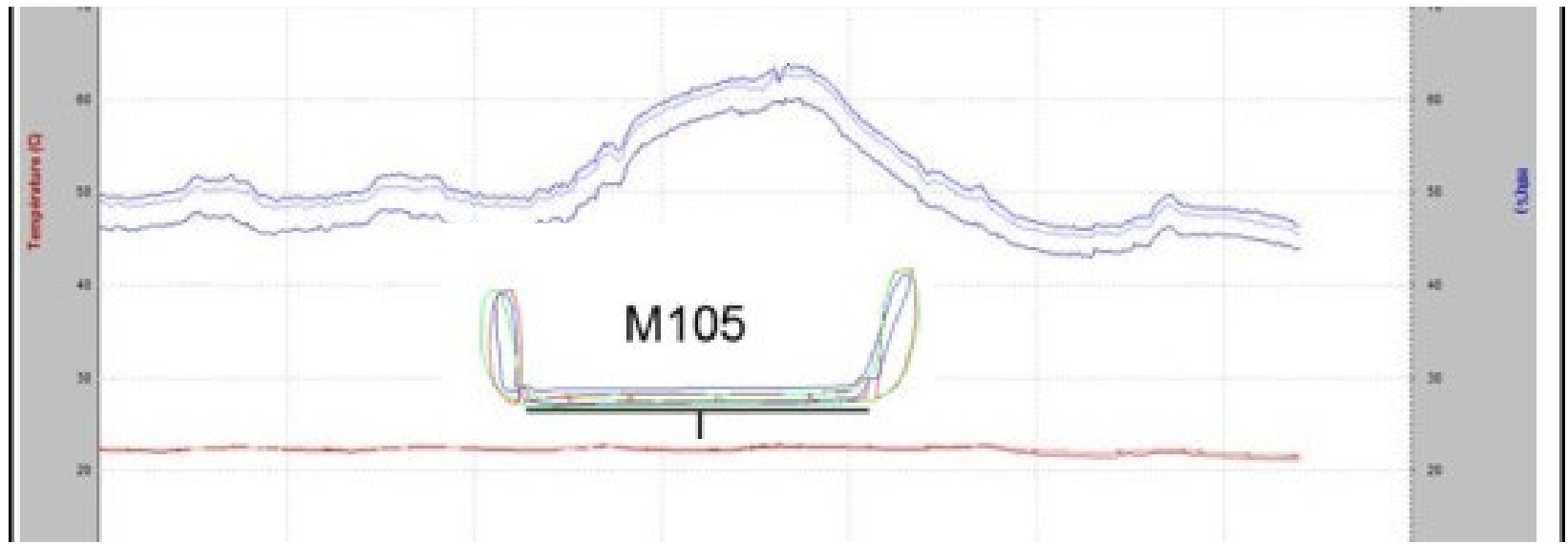
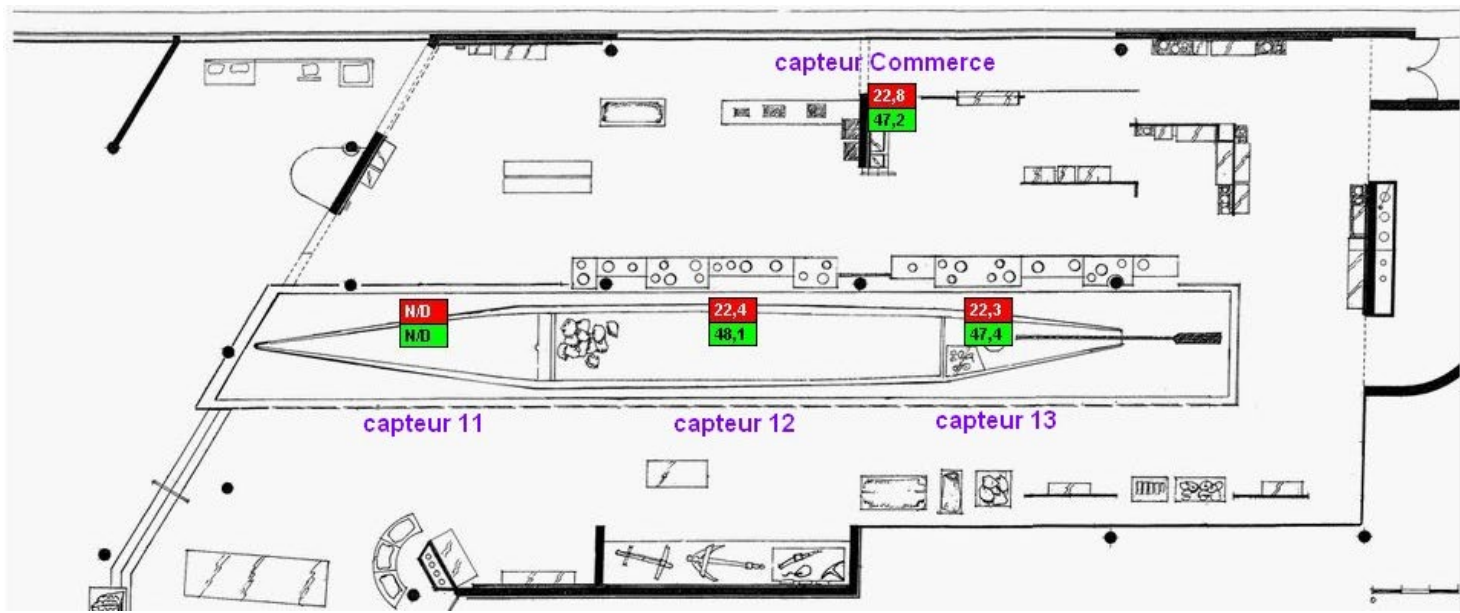
14th ICOM-CC Wet Organic Archaeological Materials Working Group Conference

The deformation monitoring of the Arles Rhone 3 Roman barge





The climatic data



14th ICOM-CC Wet Organic Archaeological Materials Working Group Conference

The deformation monitoring of the Arles Rhone 3 Roman barge

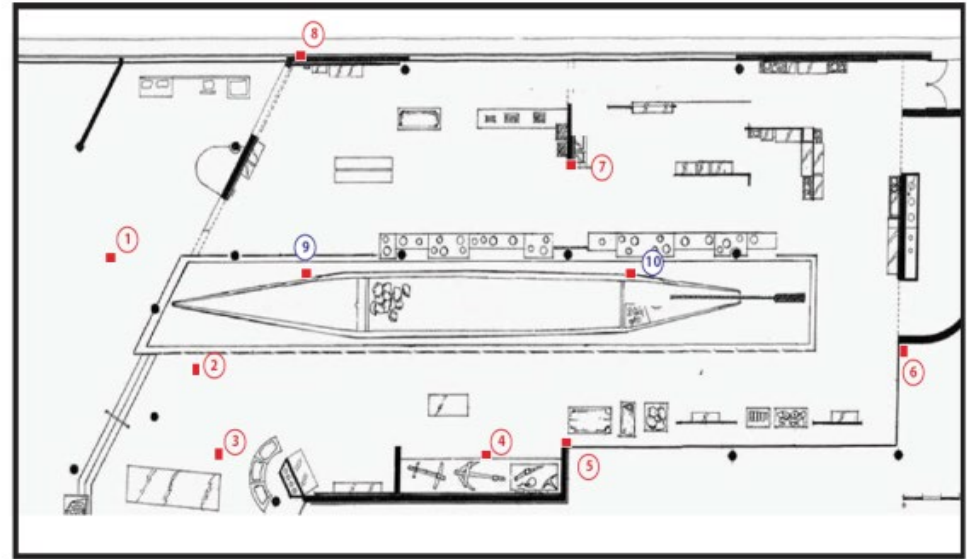


Topographical survey



The topographical survey

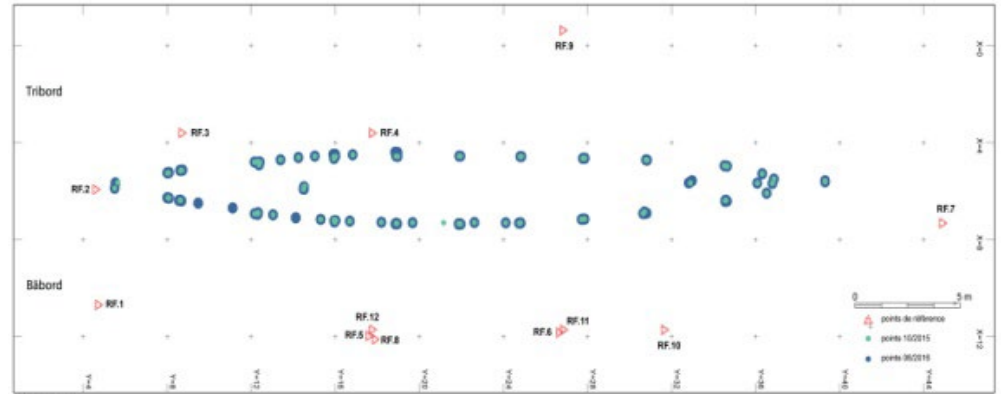
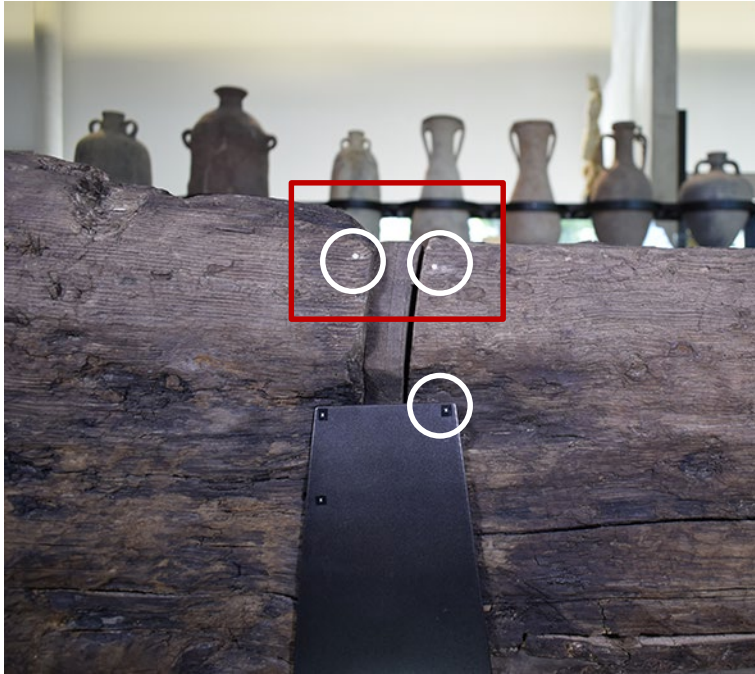
Proposition de positionnement des prises



- Référence de positionnement
- Contrôle mouvement du fond de fosse



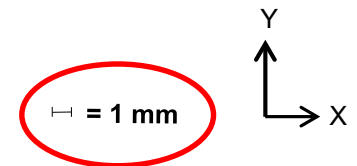
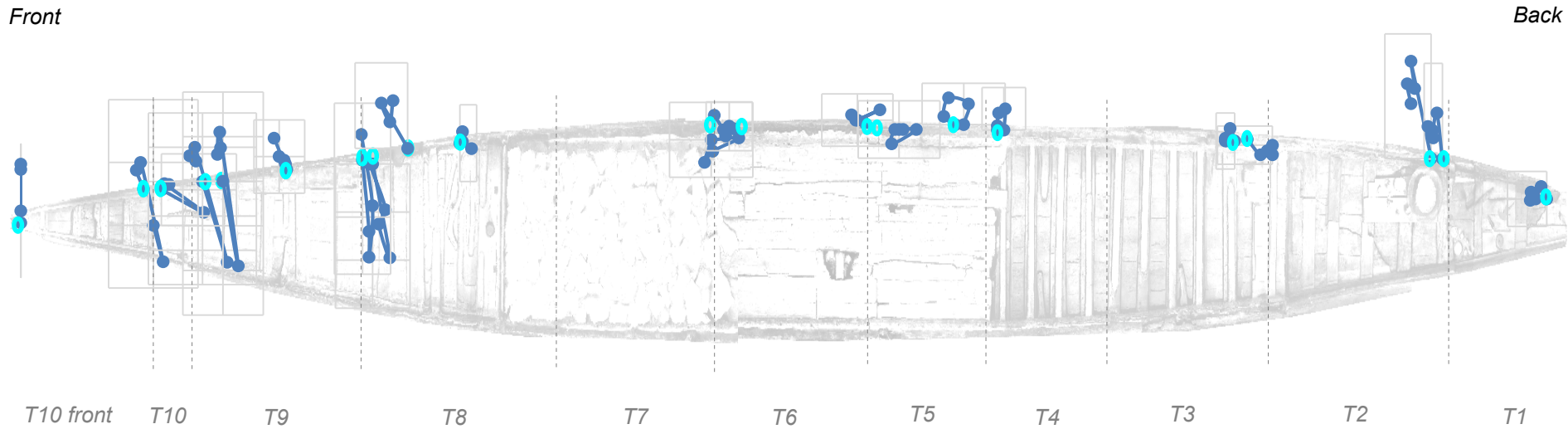
The topographical survey



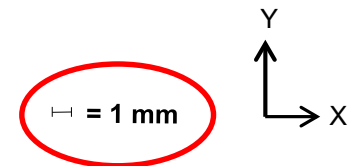
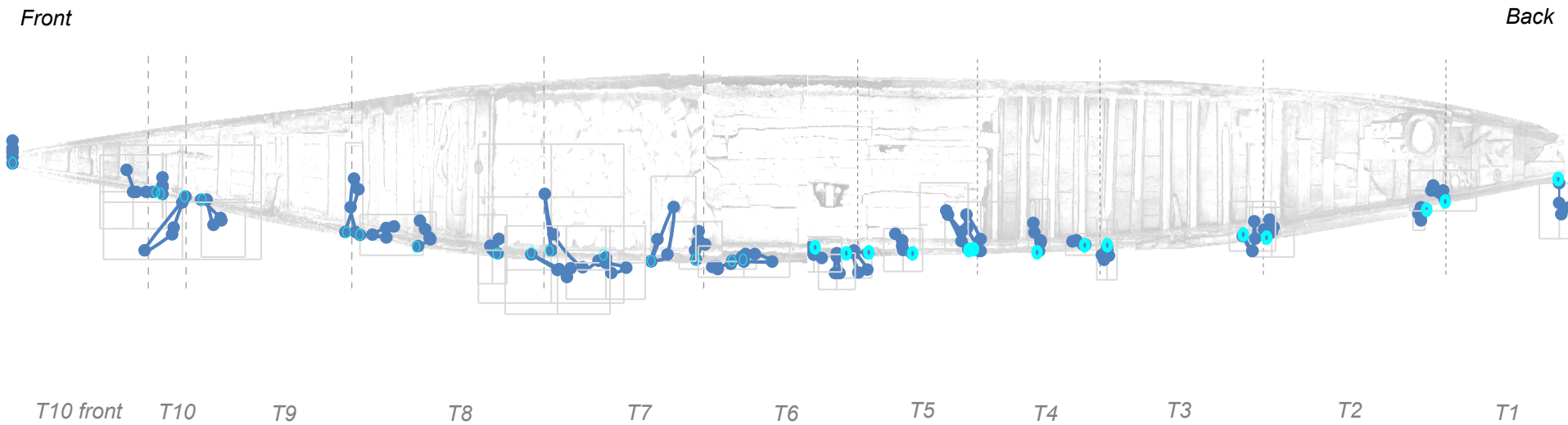
DUMAS Vincent,
Aix-Marseille Univ, CNRS, MCC, CCL, Centre Camille Jullian, F-13000, Aix-en-Provence, France - 2016



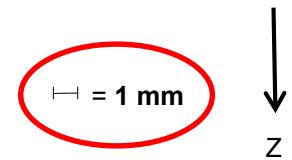
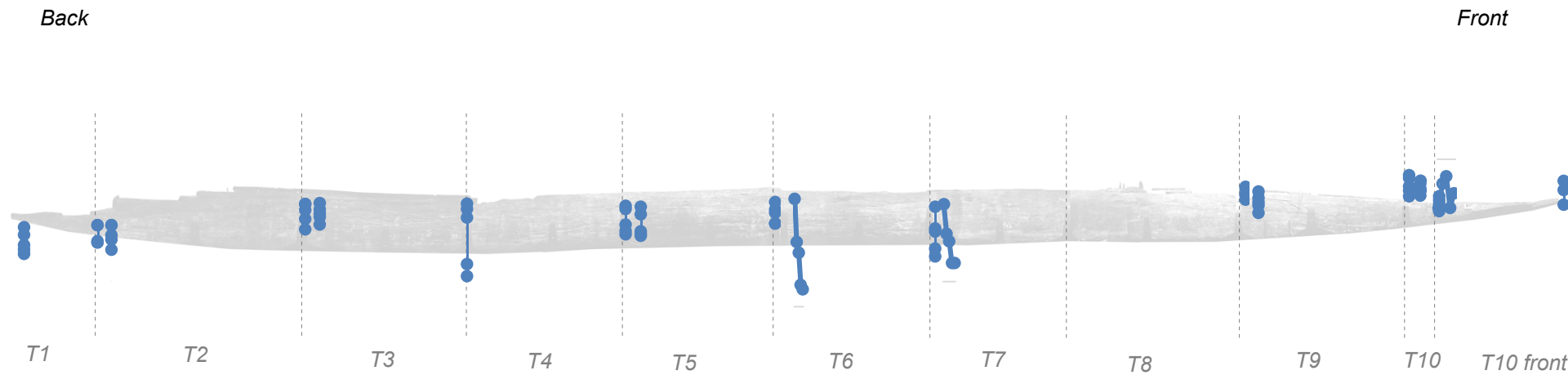
Port side – The variations on two dimensions (x,y)



Starboard Side – the variations on two dimensions (x,y)



Port side – the variations on z dimension

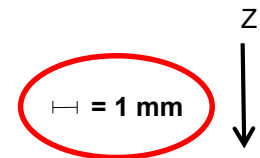
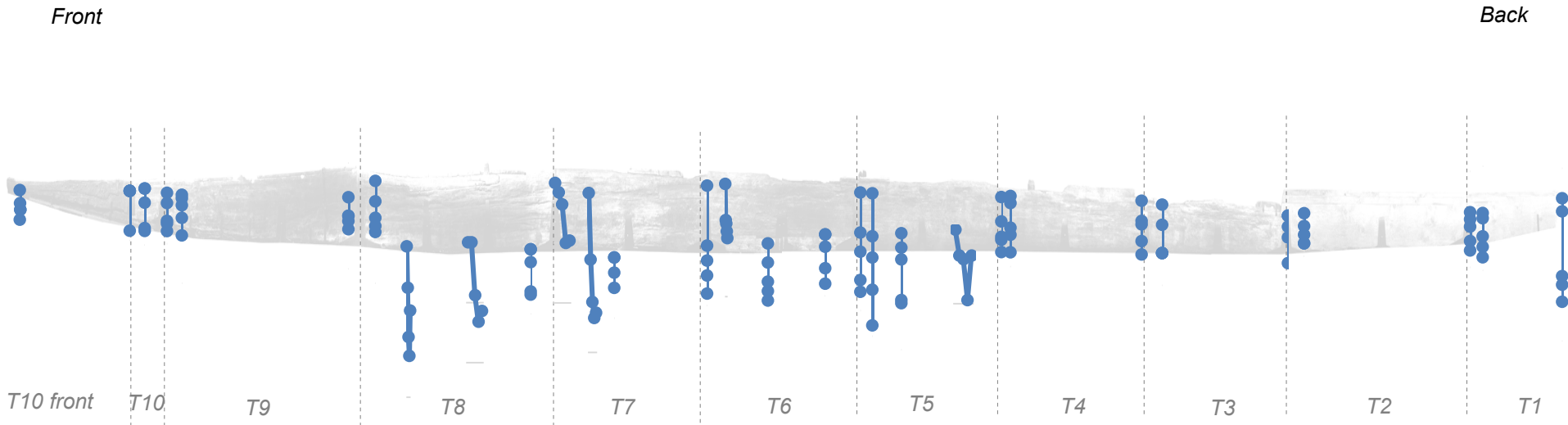


14th ICOM-CC Wet Organic Archaeological Materials Working Group Conference

The deformation monitoring of the Arles Rhone 3 Roman barge



Starboard side – the variations on z dimension



Relational database



CEZ2016_BOIS MATERIAUX

Date: 2016-12-07
Année: 2016
NomRéféré: MLCourboules
Equipe: MdAa

TROU/CON

T10 avant
T10
T9
T8
T7
T6
T5
T4
T3
T2
T1

MAT

Mât1%avB
Mât1%avT
Mât1%arrB
Mât1%arrT

BORDE'

BBE
BB1
BTE
BT1

SOLE

1/2SoleAv
1/2SoleArr

CEZ2016_BOIS MATERIAUX

BOIS

CAT ALTERATION BOIS

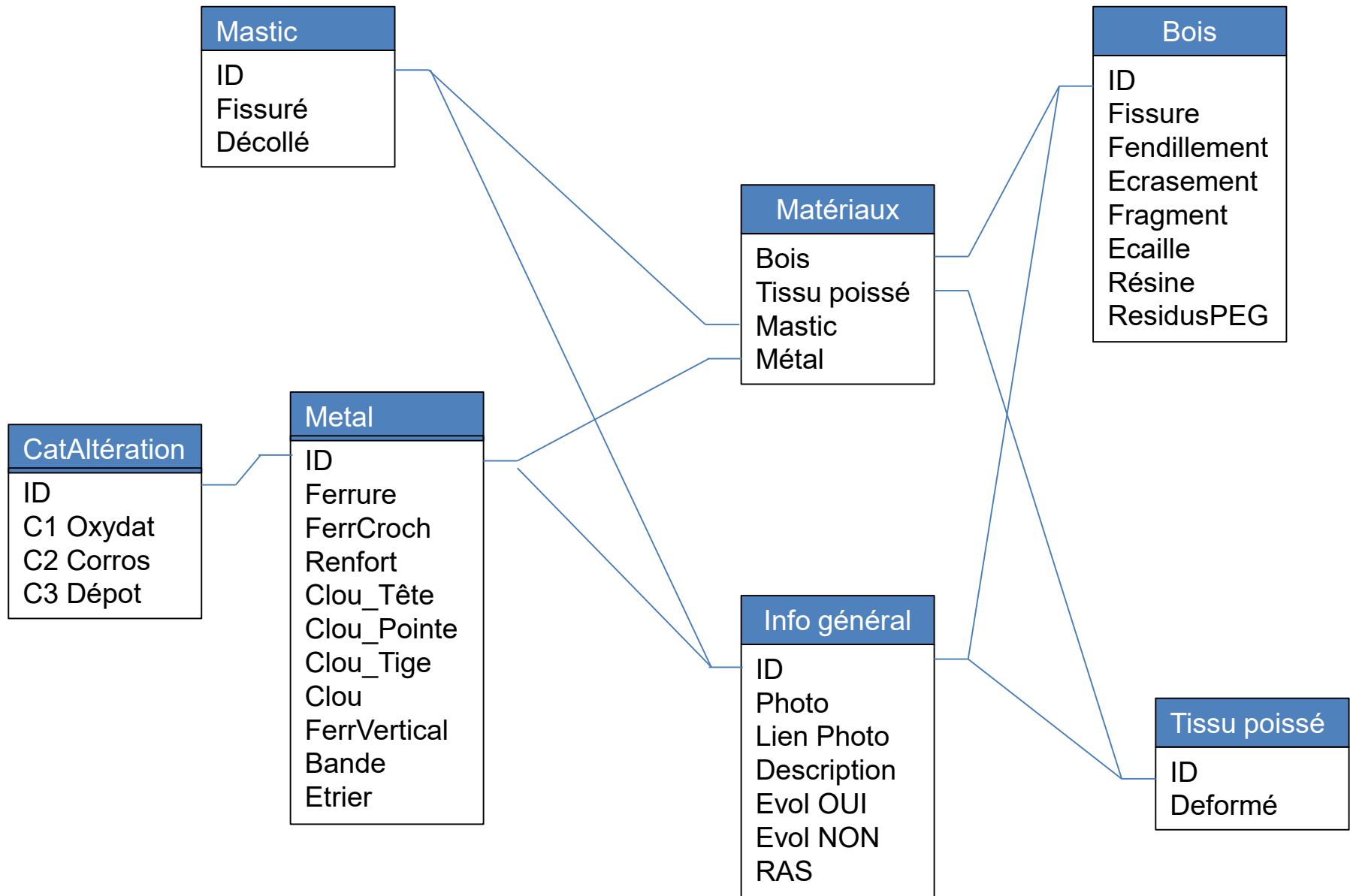
Fissure
Fendillem
Ecrasement
FragDetach
Ecaille
SouRésine
RésineN/Br
RésidusPEG
B_Evol_OUI
B_Evol_NON
B_RAS
DescrCatB: NULL

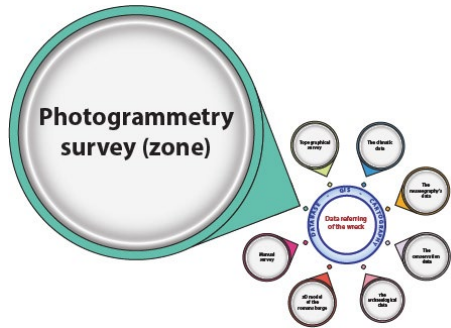
PhotoBOIS

D:\ARLES\SIG_AR3\PHOTO\CE3_2016_BOIS\DSC0060.jpg

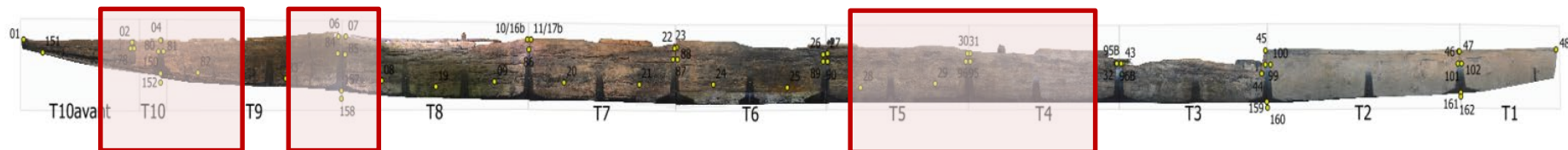
TISSU POISSE'

Deformé
TP_EvolOUI
TP_EvolNON
TP_descrip: NULL
PhotoTP: NULL



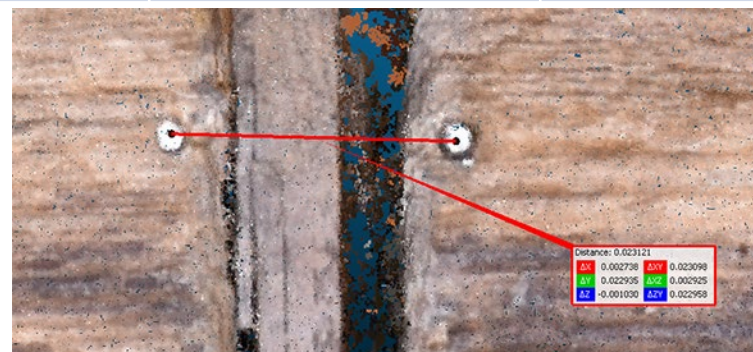


Photogrammetry survey (zone)

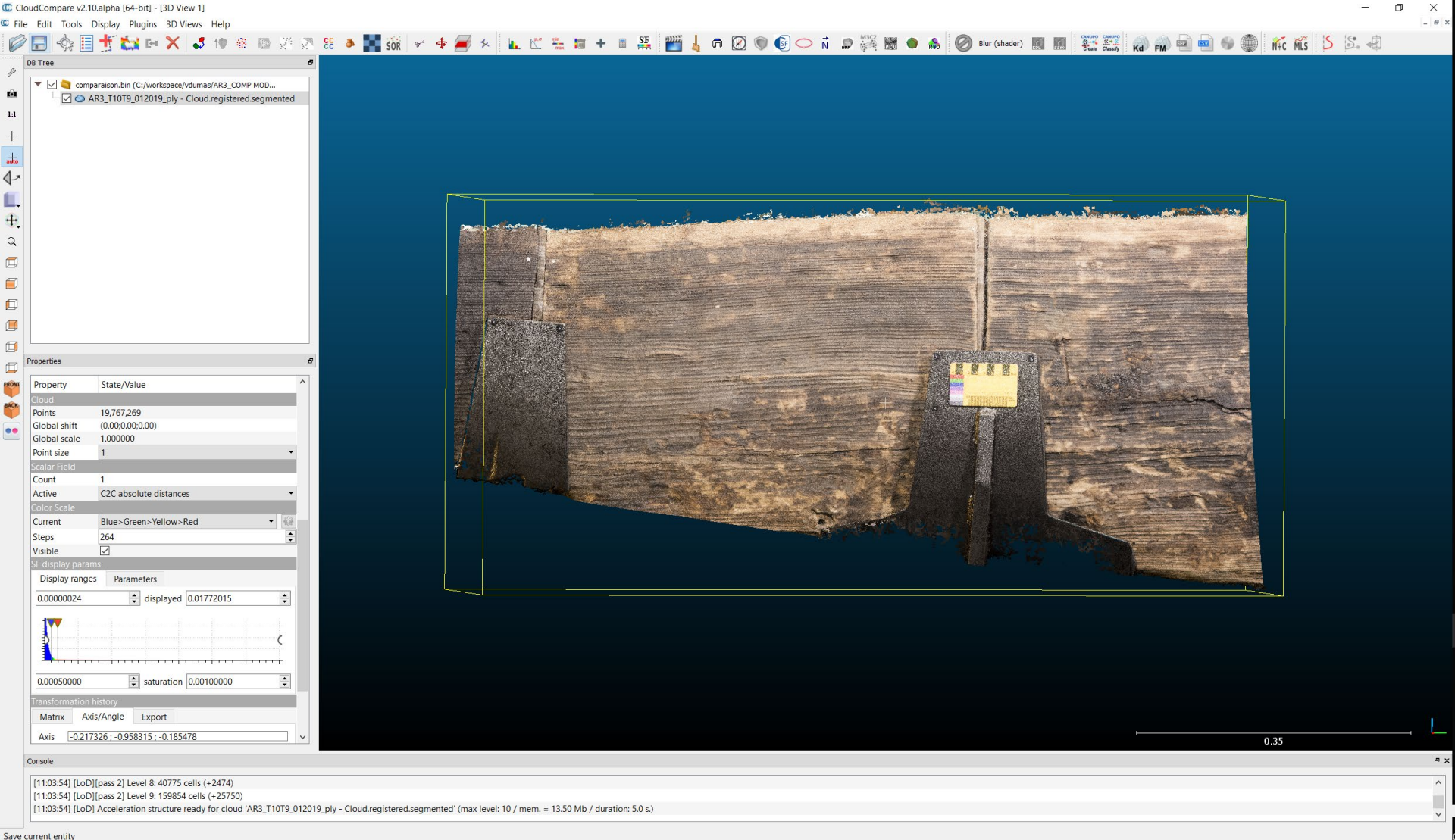


T9-T10

	Levé tachéomètre 2018_12	Mesure sur facsimilé 2018_12	Mesure sur facsimilé 2019_01	Mesure manuelle
Tronçon T4-T5 (pt30-31)	0.0587	0.0584	0.0584	
Tronçon T8-T9 (pt 6-7)	00.1528	0.1520	0.1543	
Tronçon T9-T10 (pt 4-5)	0.0231	0.0232	0.231	



T9-T10



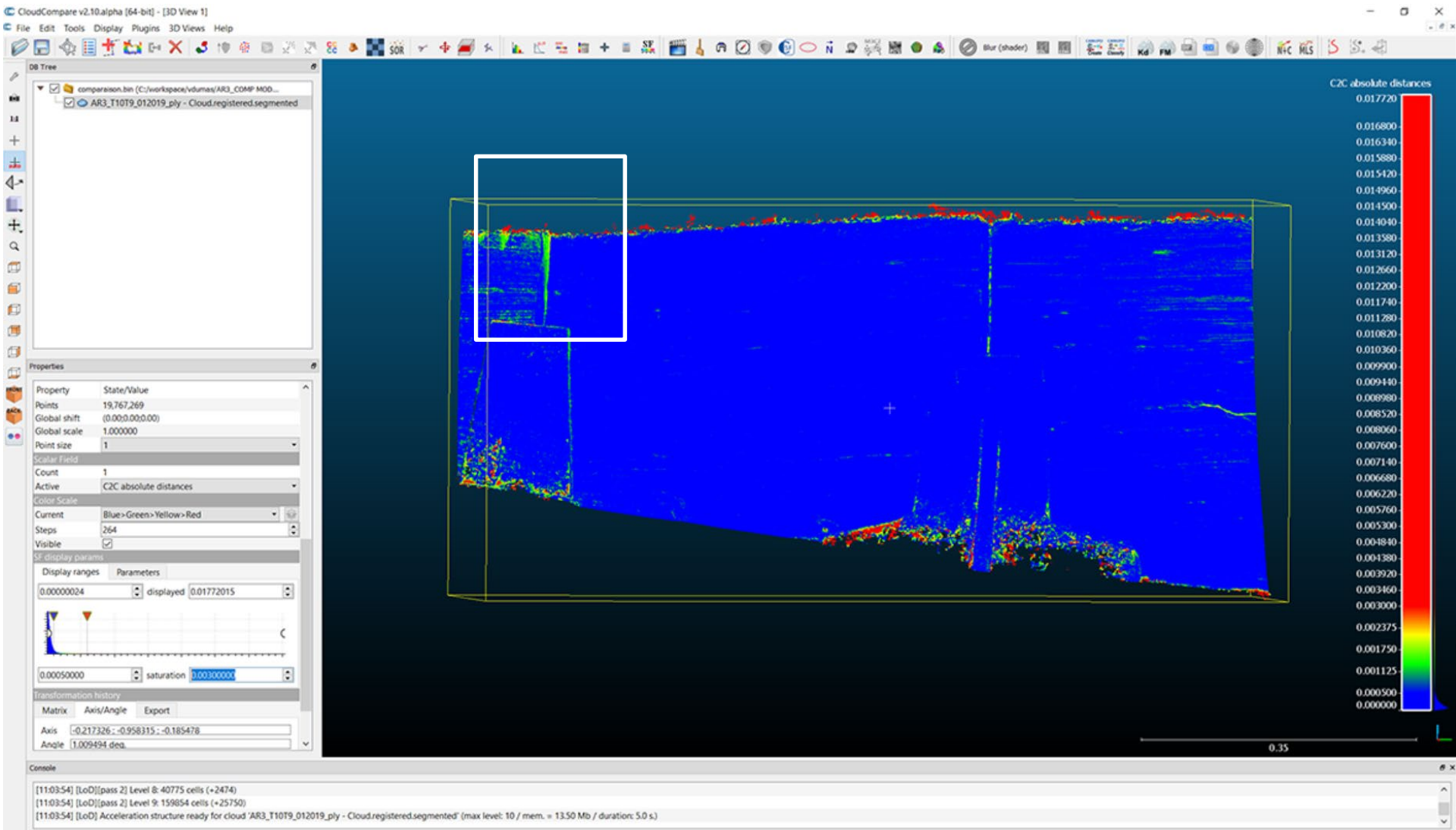
2019 : dense cloud (26 000 000 pts)



14th ICOM-CC Wet Organic Archaeological Materials Working Group Conference

The deformation monitoring of the Arles Rhone 3 Roman barge





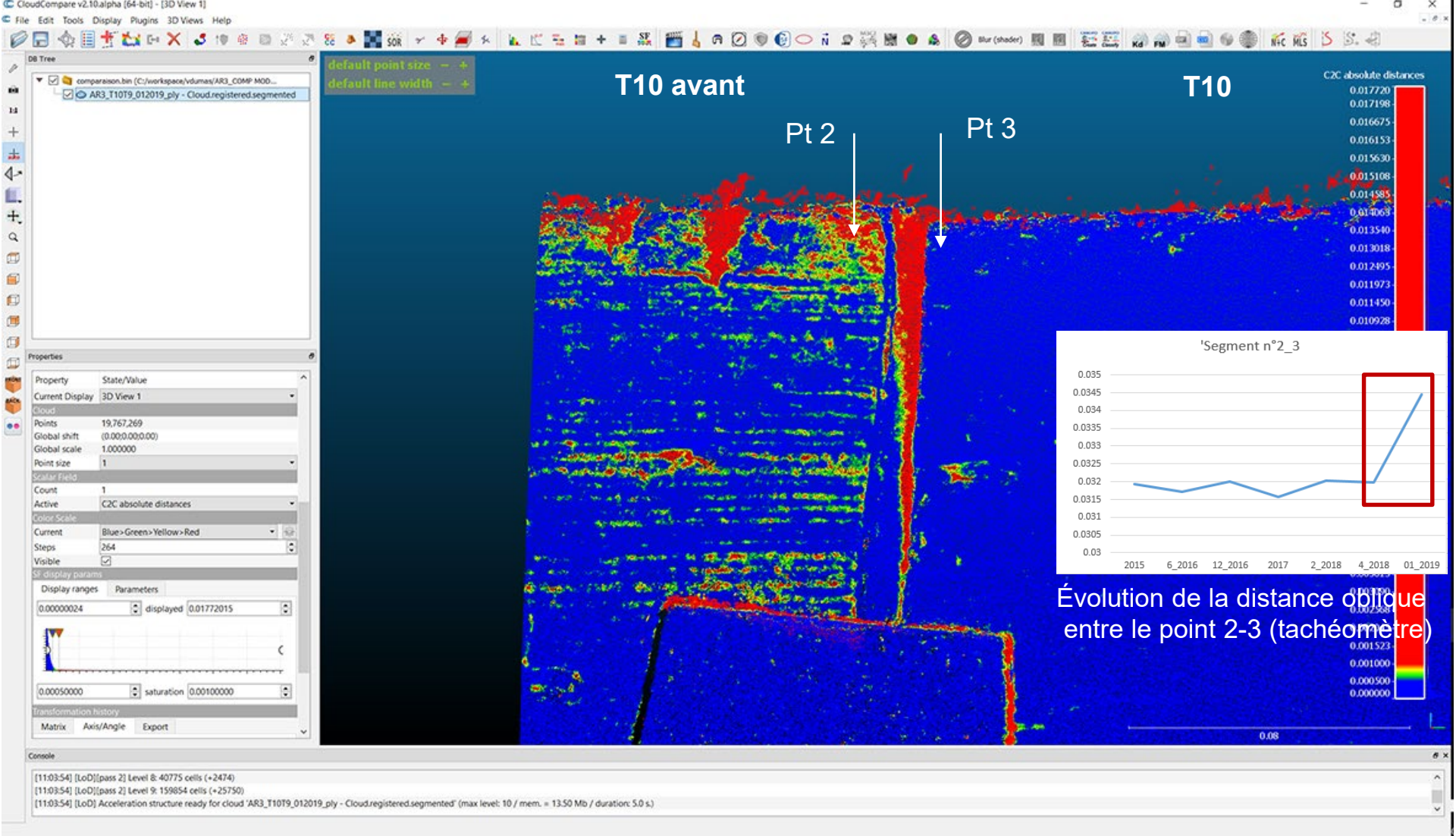
T9_10 : 04/2018_01/2019 : dense cloud compare



14th ICOM-CC Wet Organic Archaeological Materials Working Group Conference

The deformation monitoring of the Arles Rhone 3 Roman barge





T10_10 front : 04/2018_01/2019 : dense cloud compare



14th ICOM-CC Wet Organic Archaeological Materials Working Group Conference

The deformation monitoring of the Arles Rhone 3 Roman barge



A work in progress



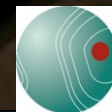
the future objectives :

- continue to development the database
- develop the link between data
- link the database directly to the 3D model
- produce a dedicated application
- A direct measurement the pH data on the boat
- correlate 3D movements and climate changes

Merci pour votre
attention
Thank you for your
attention.



Musée
départemental
Arles antique



Ipso Facto

Bureau d'Étude et de Recherche
Archéologie • Océanographie

ARC-nucle ART

Centre Camille Jullian
Histoire et archéologie de la Méditerranée et de l'Afrique du Nord
de la Préhistoire à la fin de l'Antiquité

A-CORROS
EXPERTISE

drassm
DÉPARTEMENT DES RECHERCHES ARCHÉOLOGIQUES