



HAL
open science

Design and selection of optimal ErbB-targeting bispecific antibodies in pancreatic cancer

Emilia Rabia, Véronique Garambois, Christine Dhommée, Christel Larbouret, Laurie Lajoie, Yoan Buscail, Gabriel Jimenez-Dominguez, Sylvie Choblet-Thery, Emmanuelle Liaudet-Coopman, Martine Cerutti, et al.

► To cite this version:

Emilia Rabia, Véronique Garambois, Christine Dhommée, Christel Larbouret, Laurie Lajoie, et al.. Design and selection of optimal ErbB-targeting bispecific antibodies in pancreatic cancer. *Frontiers in Immunology*, 2023, 14, 10.3389/fimmu.2023.1168444 . hal-04102843v1

HAL Id: hal-04102843

<https://hal.science/hal-04102843v1>

Submitted on 22 May 2023 (v1), last revised 12 Jun 2023 (v2)

HAL is a multi-disciplinary open access archive for the deposit and dissemination of scientific research documents, whether they are published or not. The documents may come from teaching and research institutions in France or abroad, or from public or private research centers.

L'archive ouverte pluridisciplinaire **HAL**, est destinée au dépôt et à la diffusion de documents scientifiques de niveau recherche, publiés ou non, émanant des établissements d'enseignement et de recherche français ou étrangers, des laboratoires publics ou privés.

1 **Design and selection of optimal ErbB-targeting bispecific antibodies in**
2 **pancreatic cancer**

3

4 Emilia Rabia¹, Véronique Garambois¹, Christine Dhommée², Christel Larbouret¹, Laurie Lajoie², Yoan
5 Buscail^{1,3}, Gabriel Jimenez-Dominguez¹, Sylvie Choblet-Thery⁴, Emmanuelle Liaudet-Coopman¹,
6 Martine Cerutti⁴, Marta Jarlier⁵, Patrice Ravel¹, Laurent Gros^{1,7}, Nelly Piro^{1,3}, Gilles Thibault², Eugene
7 Zhukovsky^{6#}, Pierre-Emmanuel Gérard⁶, André Pèlerin¹, Jacques Colinge^{1†}, Thierry Chardès^{1,4,7*†}

8

9 ¹IRCM, Institut de Recherche en Cancérologie de Montpellier, INSERM U1194, Université de
10 Montpellier, Institut régional du Cancer de Montpellier, Montpellier, F-34298, France;

11 ²GICC, Groupe Innovation et Ciblage Cellulaire, EA7501, Université de Tours, Tours, F-37032, France

12 ³Réseau d'Histologie Expérimentale de Montpellier, BioCampus, Université de Montpellier, UAR3426
13 CNRS-US09 INSERM, Montpellier, F-34298, France;

14 ⁴Plateforme Bacfly, Baculovirus et Thérapie, BioCampus, UAR3426 CNRS-US09 INSERM, Saint-Christol-
15 Lèz Alès, F-30380, France;

16 ⁵ICM, Institut régional du Cancer de Montpellier, F-34298, France;

17 ⁶Biomunex Pharmaceuticals, Incubateur Paris Biotech santé, Hopital Cochin, Paris, F-75014 Paris,
18 France;

19 ⁷CNRS, Centre National de la Recherche Scientifique, Paris, F-75016, France

20

21 * Correspondence : Dr. Thierry Chardès, IRCM, Institut de Recherche en Cancérologie de Montpellier,
22 INSERM U1194, Université de Montpellier, Institut régional du Cancer de Montpellier, Montpellier, F-
23 34298, France; phone number (33) 411 283 114; thierry.chardes@inserm.fr

24 † contributed equally as last co-authors

25 # currently at Ichnos Sciences Biotherapeutics SA, Route de la Corniche 5A, Epalinges CH-1066,
26 Switzerland

- 1 **Keywords:** ErbB, HER, systems biology, antibody, bispecific, pancreatic cancer, ADCC, CDC, signaling,
- 2 phosphoproteome
- 3

1 **Abstract**

2 The ErbB family of receptor tyrosine kinases is a primary target for small molecules and antibodies for
3 pancreatic cancer treatment. Nonetheless, the current treatments for this tumor are not optimal due
4 to lack of efficacy, resistance, or toxicity. Here, using the novel BiXAb™ tetraivalent format platform,
5 we generated bispecific antibodies against EGFR, HER2, or HER3 by considering rational epitope
6 combinations. We then screened these bispecific antibodies and compared them with the parental
7 single antibodies and antibody pair combinations. The screen readouts included measuring binding to
8 the cognate receptors (mono and bispecificity), intracellular phosphorylation signaling, cell
9 proliferation, apoptosis and receptor expression, and also immune system engagement assays
10 (antibody-dependent cell-mediated cytotoxicity and complement-dependent cytotoxicity). Among the
11 30 BiXAbs™ tested, we selected 3Patri-1Cetu-Fc, 3Patri-1Matu-Fc and 3Patri-2Trastu-Fc as lead
12 candidates. The *in vivo* testing of these three highly efficient bispecific antibodies against EGFR and
13 HER2 or HER3 in pre-clinical mouse models of pancreatic cancer showed deep antibody penetration in
14 these dense tumors and robust tumor growth reduction. Application of such semi-rational/semi-
15 empirical approach, which includes various immunological assays to compare pre-selected antibodies
16 and their combinations with bispecific antibodies, represents the first attempt to identify potent
17 bispecific antibodies against ErbB family members in pancreatic cancer.

1 Introduction

2 Members of the ErbB family (EGFR, HER2, HER3, and HER4) of receptor tyrosine kinases (RTK)
3 are key targets in cancer therapy. RTKs act by linking the tumor microenvironment to intracellular
4 molecular networks that influence cancer cell behavior. Multiple ligands, such as Epidermal Growth
5 Factor (EGF; EGFR ligand), and neuregulin 1 (NRG1; HER3 ligand), initiate signaling by binding to
6 receptors and inducing their dimerization (1). The dimer composition influences the nature of
7 intracellular signaling and cellular responses as well as receptor trafficking and degradation. Many RTKs
8 are activated by various ligands, and induce multiple downstream pathways with feedback loops and
9 cross-talks, such as the ERK and AKT pathways (2). Abnormal HER signaling can be caused by ligand or
10 receptor overexpression, or mutation-related constitutive activity that may lead to drug resistance
11 (3,4).

12 The complexity of RTK activation and of the downstream pathway cross-talk and the intrinsic
13 signal transduction robustness (5–9) make it difficult to reduce RTK activity by inhibiting a single RTK
14 or a unique downstream kinase. We (10–12) and others (13,14) proposed to combine monoclonal
15 antibodies (mAbs) against different RTKs or different epitopes of the same receptor to overcome
16 acquired resistance or to circumvent signaling robustness. We found that the combination of
17 cetuximab (anti-EGFR mAb) and trastuzumab (anti-HER2 mAb) is efficient against pancreatic cancer
18 (10–12), a disease with unmet medical needs and poor prognosis (15). This preclinical work, confirmed
19 by other research groups (13,14,16), led to the initiation of the THERAPY phase I/II clinical trial in
20 patients with metastatic pancreatic cancer who progressed on gemcitabine. This trial showed that the
21 cetuximab-trastuzumab combination stabilizes the disease in 27% of patients, without objective
22 response but with a positive correlation between skin toxicity and progression-free survival (17). Other
23 studies also showed that homo-combinations of two antibodies against EGFR (18–21), HER2 (22–24),
24 or HER3 (25), and hetero-combinations of antibodies against EGFR and HER2 (10–14,16,26), or EGFR
25 and HER3 (27,28) induce anti-tumor activity through accelerated degradation of the targeted
26 receptors, enhanced antibody-dependent cell-mediated cytotoxicity (ADCC) and reduction of dimer

1 formation, thus bypassing the resistance to treatment induced by monotherapy. They also maintain
2 the anti-tumor activity despite the presence of mutations in EGFR extracellular domain (ECD) that
3 might impair antibody binding (29). Similarly, mixtures of three antibodies against HER2 (30) or EGFR
4 (Sym004) (31) resulted in therapeutic benefits in HER2-amplified breast cancer and lung cancer,
5 respectively. In experimental models, oligoclonal cocktails of three (32,33) to six (34,35) antibodies
6 against EGFR, HER2 and HER3 increased the anti-tumor effect with blockade of the intracellular ERK
7 and AKT signaling pathways and accelerated receptor degradation. These pre-clinical results led to
8 more than 20 phase II/III clinical trials in patients with cancer to test ErbB antibody associations (36).
9 However, due to RTK signaling complexity, it is very difficult to predict the effects (synergy or additivity)
10 of antibody combinations against a specific tumor.

11 In recent years, bispecific antibodies (BsAbs) (37) have been developed to bridge immune cells
12 to tumor cells to increase cancer cell killing and to dually target RTKs. Some examples of BsAbs against
13 ErbB members are anbenitamab (KN026) (38) and zanidatamab (ZW25) (39) (against HER2/HER2),
14 duligotuzumab (MEHD7945A) (40) and Izalontamab (SI-B001) (41) (against EGFR/HER3), and MM-111
15 (42) and zenocutuzumab (MCLA-128) (43) (against HER2/HER3). These BsAbs have been evaluated in
16 clinical trials, but with inconclusive results in many cases. Currently, MCLA-128 is tested in clinical trials
17 in patients with HER2-amplified and HER2-low/estrogen receptor-positive breast cancer, and in phase
18 1/2 trials in patients with NRG1-positive pancreatic and lung cancer (44). The anti-HER2/HER2 BsAbs
19 KN026 and ZN25 are evaluated in a phase 1 trial (HER2-amplified breast and gastric cancer) and in a
20 phase 2 trial (biliary tract cancer) (45–47). The anti-EGFR/HER3 BsAb SI-B001 is included in phase 2/3
21 trials in lung cancer (41). Moreover, anti-EGFR/HER2 (48,49), anti-HER2/HER3 (50,51) and anti-
22 EGFR/HER3 (52,53) BsAbs, and a tetravalent anti-EGFR/HER2/HER3/VEGF antibody (54) have been
23 evaluated in pre-clinical studies.

24 Some authors used mathematical modeling of antibody combinations, particularly by taking
25 into account feedback loops in RTK signaling that can intrinsically cause resistance to single therapies
26 (5,6). This led to the identification of the BsAbs MM-111 (against HER2/HER3) (42) and istiratumab

1 (MM-141) (against IGF-1R/HER3) (55). These models took into account signaling networks and
2 sometimes internalization processes, but they did not integrate them with antibody-mediated immune
3 mechanisms, such as ADCC or complement-dependent cytotoxicity (CDC). However, it has been shown
4 that clinically-approved antibodies against EGFR or HER2 act predominantly through these immune
5 mechanisms to reduce tumor growth (56,57). Yet, the existing models essentially ignore the influence
6 of ADCC/CDC on receptor dynamics when combined therapies include antibodies. Moreover, no global
7 analysis evaluated whether the cell signaling effects, RTK degradation, and immune-induced effects
8 induced by BsAbs targeting ErbB family members are different from those induced by single mAbs or
9 mAb combinations. BsAbs could locally show increased avidity for two receptors and a natural
10 tendency to favor clustering of receptor lattices, thus improving natural killer (NK) cell recognition and
11 ADCC.

12 In this study, we performed a rational exploration of potential BsAb designs to target
13 pancreatic cancer. To provide a global picture, we considered six therapeutic mAbs against EGFR, HER2
14 and HER3 (two *per* receptor) that target different epitopes and competing or not with the ligand. We
15 tested these antibodies as monotherapy (1MAbs), in combination (2MAbs), and as BsAbs. We
16 produced the BsAbs using the IgG-based tetravalent BiXAb™ platform. We included two binding sites
17 (two tandem Fab domains on each arm) for each receptor, thus maintaining bivalence, and a functional
18 Fc domain. We designed 30 BiXAb™ by considering both external (N-terminal) and internal positions
19 for each Fab domain on the BiXAb™ arms, and screened them *in vitro* in pancreatic cancer and patient-
20 derived xenograft (PDX)-derived cell lines benchmarking them to the corresponding 1MAbs and
21 2MAbs. Through successive selections of the most promising molecules based on their effects on
22 downstream kinase signaling, cell proliferation and apoptosis, receptor degradation, and immune
23 system engagement, together with network modeling, we identified three lead BiXAb™ and compared
24 them to 1MAbs and 2MAbs in pre-clinical models of pancreatic cancer.

25

1 **Methods**

2 **Cell lines and culture**

3 The BxPC3, Sw1990, AsPC-1, and CFPAC pancreatic cancer cell lines and the SKBR3 breast
4 cancer cell line were from ATCC (Rockville, MD) and were cultured following the ATCC
5 recommendations. The two PDXs (P4604 and P2846) were generated from resected hepatic and
6 peritoneum metastatic samples, respectively, from two patients with pancreatic cancer treated with
7 gemcitabine (P4604) or untreated at surgery time (P2846) (PDX Platform, Institut de Recherche en
8 Cancérologie de Montpellier) (58). The PDX cell line C-PDX P4604 was derived from the PDX P4604.
9 The gemcitabine-resistant cell line BxPC3-GR was generated by exposure to progressively increasing
10 doses of gemcitabine, as previously described (58). All cell lines and the PDXs express EGFR at high
11 level (between 150,000 and 350,000 receptors/cell), HER2 at intermediate level (between 6,000 and
12 78,000 receptors/cell), and HER3 at low level (between 5,000 and 20,000 receptors/cell) (26,58,59),
13 except the SKBR3 cell line that is HER2^{high} (>1 million receptor/cell) (59). The CD16/Fc γ RIII (158V
14 allotype)-transfected human NK92 cell line was cultured in complete RPMI medium supplemented
15 with 100 IU/ml interleukin 2, as previously described (60).

16

17 **Recombinant proteins and antibodies**

18 Tag-free recombinant human HER2 (SB #10004-HCCH) and HER3 (SB #10201-HCCH) ECD, and
19 His-tagged recombinant human EGFR (SB #10001-H08H), HER2 (SB #10004-H08H) and HER3 (SB
20 #10201-H08H) ECD were purchased from Sino Biological Inc (China). Tag-free recombinant human
21 EGFR (#TP723071) was from OriGene (Rockville, MD). Recombinant human NRG1- β 1 (NRG1 hereafter)
22 (#377-HB-050) and EGF (#236-EG) ECD were provided by Biotechne R&D Systems (Minneapolis, MN).
23 Control IgG from pooled human serum was purchased from MP Biomedicals ((#55908, Cappel; Solon,
24 OH). Cetuximab (anti-EGFR mAb), and pertuzumab and trastuzumab (anti-HER2 mAbs) were provided
25 by the ICM hospital pharmacy (Montpellier, France). The anti-EGFR mAb matuzumab (10) was kindly
26 donated by Merck AG (Darmstadt, Germany). For western blotting, primary rabbit monoclonal

1 antibodies against EGFR (#2232S), HER2 (#2242S), HER3 (#12708S), AXL (#8661), GAPDH (#14C10) and
2 β -tubulin (#2148) were from Cell Signaling Technology (Danvers, MA). The secondary peroxidase-
3 conjugated anti-human Fc (#A0170) and anti-His Tag (#A7058) for ELISA binding assays, and anti-rabbit
4 IgG (#A0545) for western blotting were purchased from Sigma (Saint Louis, MO). For western blotting
5 revealed by fluorescence detection, the secondary IRDye800-conjugated goat anti-rabbit IgG (#926-
6 32211) and IRDye680-conjugated goat anti-mouse IgG (#926-68020) were from LI-COR Biosciences
7 (Lincoln, NE). Immunohistochemistry (IHC) analysis of formalin-fixed paraffin-embedded (FFPE) sections
8 was performed using primary antibodies against human IgG (γ -chain specific, #A0423; Dako, Glostrup,
9 Denmark), Ki67 (#Ab254253, clone BMI1; Abcam, Cambridge, UK) and CD31 (#Ab28364; Abcam), and
10 a secondary rabbit anti-rat antibody (IgG H+L, #31219; ThermoFisher). Immunofluorescence analysis
11 of FFPE sections was done with primary antibodies against EGFR (Confirm anti-EGFR antibody, clone
12 5B7; Roche Diagnostics; Basel, Switzerland), HER2 (Pathway anti-HER2 antibody; clone 4B5; Roche
13 Diagnostics) and HER3 (#DAK-H3-IC; Dako), and a secondary rabbit anti-mouse antibody (pan IgG_{1,2,3},
14 #Ab133469; Abcam). Flow cytometry analysis of ADCC and CDC was performed with APC-AF750-
15 conjugated anti-CD16 (#B49184; clone 3G8), ECD-conjugated anti-CD56 (#B49214; clone N901), and
16 phycoerythrin-conjugated anti-IFN γ (#IM2717U; clone 45.15) antibodies from Beckman Coulter (Brea,
17 CA), and PerCy5-conjugated anti-CD107a (#555802) and fluorescein-conjugated anti-complement
18 fraction C4c (#F0169) antibodies from BD Biosciences (Franklin Lakes, NJ) and Dako (Agilent
19 Technologies France, Les Ullis), respectively. The GolgiPlug reagent containing brefeldin (#555028) was
20 from BD Biosciences, and staurosporine (#6942) and DMSO (#2438) were from Sigma. The MEK
21 inhibitor selumetinib and the PI3K inhibitor were from Selleck Chemicals (Houston, TX). NK cells were
22 isolated for immunophenotyping using phycoerythrin-conjugated anti-CD3 (#555275; BD Biosciences),
23 and APC-Cy7-conjugated anti-CD19 (#557655; BD Biosciences) antibodies for negative selection, and
24 AF700-conjugated anti-CD45 (#560510; BD Biosciences), APC-conjugated anti-CD49b (#108910;
25 Biolegend, San Diego, CA), fluorescein-conjugated anti-NKp46 (#137606; Biolegend), BV786

1 conjugated anti-CD107a (#564349; BD Biosciences), and BV421-conjugated anti-IFN γ (#505830;
2 Biolegend) antibodies for positive selection.

3

4 **Production, purification and characterization of recombinant mono- and bi-specific antibodies**

5 The variable sequences of matuzumab (1Matu), cetuximab (1Cetux), trastuzumab (2Trastu),
6 pertuzumab (2Pertu), patritumab (3Patri; anti-HER3 mAb) and elgemtumab (3Elgem; anti-HER3 mAb)
7 were extracted from the IMGT database (Montpellier, France). The bispecific and tetravalent BiXAbTM
8 platform was developed by Biomunex Pharmaceuticals (patents WO2018178101 and
9 WO2018127608), based on the initial BsAb format described by Golay *et al* (61) and the accompanying
10 patent (WO2013005194). The BiXAbTM architecture (Figure 1A) consists of a tetravalent IgG-like format
11 with two Fabs arranged in tandem and joined by a novel semi-rigid pseudo-hinge linker. This linker is
12 a human sequence that contains the IgG1 hinge, the CH2 domain N-terminus and a human Ig alpha
13 hinge sequence. It links the CH1 domain C-terminus of the external Fab1 with the VH domain N-
14 terminus of the internal Fab2 (WO2018127608). Moreover, an original set of mutations have been
15 introduced at the interface of the CH1 and CL domains of the two Fabs to facilitate cognate pairing of
16 heavy/light chains and prevent their mispairing (described in WO2018178101). The two tandem Fabs
17 are constructed on an Fc fragment to endow the obtained BiXAbTM with immune-related mechanisms
18 and adopt the full bispecific, bivalent antibody architecture to permit efficient binding to the two
19 targeted epitopes. The variable regions of six mAbs were cloned in separate vectors resulting in 30
20 heavy chain cassettes that comprised all possible combinations of the six antibodies in both
21 orientations, and the six light chains. The BiXAbTM synthesis required the production of one continuous
22 fused heavy chain with two separate light chains (submitted patent; application number
23 EP22305242.4). The BiXAbTM antibodies were produced by transient co-transfection of three genes
24 coded on separate pQMCF vectors in a 2:1:1 (heavy chain:light chain1:light chain2) molecular ratio.
25 The cloning, production and purification of mAbs and BiXAbTM was performed at Icosagen (Tartu,
26 Estonia). The thirty 250-kDa BiXAbTM, derived from 1Cetu (EGF-competitive, specific for EGFR domain

1 3), 1Matu (EGF-non-competitive, specific for EGFR domain 3), 2Pertu (HER2 domain 2-specific; no
2 ligand identified), 2Trastu (HER2 domain 4-specific; no ligand identified), 3Patri (NRG1-competitive and
3 specific for HER3 domain 2) and 3Elgem (NRG1-non-competitive and specific for HER3 domains 2/4),
4 were produced in CHO cells and purified by Protein A affinity chromatography. The control BiXAb™
5 HLA-DR/CD5 was described elsewhere (61) and the control CD3/CD19 BiXAb™ was provided by
6 Biomunex Pharmaceuticals. For the quality control of the purified BiXAb™, aggregation, monomer and
7 dimer content in native conditions were determined by size exclusion chromatography using HiLoad®
8 26/600 Superdex® 200 pg columns (Cytiva, Germany; #28-9893-36) and by assessing their thermal
9 stability by differential scanning calorimetry. Antibodies were stored at 4°C in PBS buffer, pH 7.5.

10

11 **Electrophoresis, Coomassie blue staining, and western blotting**

12 BxPC3 and Sw1990 cells at 80% confluence were seeded in flat-bottom plates or culture flasks
13 (Starsted) with complete medium at 37°C for 24 h before serum starvation (culture medium with 2%
14 FCS) for 24 h. After medium removal, tumor cells were incubated with 330 nM of BiXAb™ or 1MAbs,
15 or a 330+330 nM-concentration of 2MAbs diluted in culture medium/2% FCS for 6h. Then, cells were
16 washed twice with cold PBS, lysed in lysis buffer (0.05 M Hepes pH 7.7, 10% glycerol, 0.15 M NaCl, 1%
17 Triton X-100, 1 mM EDTA, 1 mM EGTA) supplemented with 1/100 solution of anti-phosphatase and
18 protease cocktail (#7843; ThermoFisher, Waltham, MA) at 4°C for 30 min. After centrifugation at
19 13,000 g for 15 min, resuspension in 1X Laemmli buffer (60 mM Tris pH 6.8, 10% glycerol, 1% SDS), and
20 heating at 95°C for 5 min, 100 µg of proteins were loaded on 7-12% electrophoresis gels and were
21 separated at 100 V for 2 h. After liquid transfer at cold temperature and constant voltage (100 V) for 2
22 h, PVDF membranes were saturated in PBS/0.1% Tween (PBS-T) supplemented with 5% skimmed milk
23 at room temperature for 2 h. Then, membranes were probed with primary antibodies diluted in PBS-
24 T/3% BSA/0.002% sodium azide at 4°C for 18 h. Membranes were then incubated with a peroxidase-
25 conjugated anti-rabbit antibody (1/2,000 dilution in PBS-T) at room temperature for 1 h. For enzymatic
26 detection, western blots were revealed with the Western Lightning Ultra reagent (Perkin Elmer,

1 Waltham, MA) and images were acquired with G:BOX (Syngene, Cambridge, UK) before quantification
2 with the ImageJ™ software.

3 For Coomassie blue staining of the produced antibodies, 2 µg of protein samples were diluted
4 in Laemmli buffer, with or without mercaptoethanol, and with or without heating at 95°C for 5 min.
5 Then, samples were separated on 8%-12% electrophoresis gels. After 2 h-migration at 100 V, gels were
6 rinsed once with distilled water and stained with Coomassie blue (#B0149, Sigma) under agitation at
7 room temperature for 1 h. Then, gels were washed with acetic acid/ethanol until only the protein
8 bands and molecular weight markers (#00193837; Lonza, Basel, Switzerland) remained visible.

9

10 **Direct ELISA binding assay and BiXAb™ EC₅₀ to EGFR, HER2, or HER3**

11 Nunc Maxisorp 96-well plates (Rochester, NY) were coated (50 µl/well) with His-tagged EGFR,
12 HER2 or HER3 (800 ng/ml in PBS) at 4°C for 18 h. After four washes in PBS-T, plates were saturated
13 with PBS-T/1% BSA at 37°C for 1 h. Then, two-fold or ten-fold dilutions of BiXAb™ or 1MAbs were
14 added (final volume of 50 µl/well in PBS buffer) and incubated at 37°C for 1 h. After four washes in
15 PBS-T, the peroxidase-conjugated anti-human Fc antibody was added (1/40000 dilution in PBS buffer)
16 at 37°C for 1 h. Then, plates were rinsed four times in PBS-T, and 50 µl of TetraMethylBenzidine (TMB)
17 (#34028; ThermoFisher) was added to each well. After, 10-30 min incubation at room temperature in
18 the dark, the reaction was stopped by adding 1 M hydrochloric acid (50 µl/well) and the optical density
19 was read at 450 nm.

20

21 **Analysis of EGFR/HER2, EGFR/HER3 and HER2/HER3 bi-specificity by sandwich ELISA**

22 Nunc Maxisorp 96-well plates were coated with tag-free EGFR, HER2 or HER3 (1000 ng/ml in
23 PBS buffer) (50 µl/well) at 4°C for 18 h. After four washes in PBS-T, plates were saturated with PBS-
24 T/1% BSA at 37°C for 1 h. After washing in PBS-T, the BiXAb™ were added (various dilutions in PBS
25 buffer) in a final volume of 50 µl/well and left at 37°C for 1 h. After four washes in PBS-T, 1000 ng/ml
26 of His-tagged EGFR, HER2, or HER3 in PBS (50 µl/well) was added at 37°C for 1 h. Then, plates were

1 washed in PBS-T four times before adding the peroxidase-conjugated anti-His tag antibody (1/2000
2 dilution in PBS buffer) (50 µl/well) at 37°C for 1 h. After four washes in PBS-T, 50 µl/well of TMB was
3 added at room temperature in the dark. After for 10-30 min, the reaction was stopped by adding 1 M
4 hydrochloric acid (50 µl/well) and the optical density was read at 450 nm.

5

6 **Quantification of AKT and ERK phosphorylation by time-resolved fluorescence energy transfer**

7 ERK and AKT phosphorylation levels were quantified by time-resolved fluorescence energy
8 transfer (TR-FRET) using the pERK Thr202/Tyr204 (#64ERKPEG) and pAKT Ser473 (#64AKSPET) TR-FRET
9 kits (CisBio Perkin Elmer, Le Codolet, France). Fifty thousand BxPC3, AsPC-1, CFPAC, Sw1990, SKBR3
10 and C-PDX P4604 cells/well were grown in complete medium in sterile 96-well flat-bottom plates
11 (#83.3924; Sarstedt, Germany) at 37°C for 24 h before serum starvation in culture medium/2% FCS for
12 24 h. After medium removal, cells were incubated with 70 nM of BiXAb™ or parental 1MAbs in culture
13 medium/2% FCS (100 µl/well) for 20 min, and then 16.6 nM EGF (100 ng/ml) and 3.71 nM NRG1 (100
14 ng/ml) were added at 37°C for 10 min. After removal of excess antibodies and ligands by extensive
15 washings, cells were lysed under agitation in the supplemental lysis buffer (CisBio Perkin Elmer) for 1
16 h. Lysates were transferred to white 384-well plates. Anti-pERK-cryptate/anti-pERK-d2 or anti-pAKT
17 cryptate/anti-pAKT-d2 antibody pairs were added to each well and left in the dark at room
18 temperature for 4h, according to the manufacturer's instructions. The TR-FRET signal (665 nm/620 nm
19 emission ratio) was measured on a Pherastar (BMG Labtech, Ortenberg, Germany) reader and
20 normalized to 100% binding (obtained by incubating tumor cells with the EGF+NRG1 mixture without
21 antibodies). Negative control wells contained unstimulated/non-treated cells and labeled antibodies.
22 Experiments were done in triplicate.

23

24 **Cell viability**

25 Cell viability was measured with the CellTiter 96 Aqueous One Solution Cell Proliferation Assay
26 (#G3581; Promega, Madison, WI). Three- to five-thousand BxPC3, Sw1990, and BxPC3-GR cells were

1 seeded in complete medium in sterile 96-well flat-bottom plates (100 μ l/well) (Starsted) at 37°C for 24
2 h before starvation (culture medium/2% FCS) for 24 h. After medium removal, cells were incubated
3 with 330 nM BiXAb™ or 1MAbs, or 330+330 nM 2MAbs diluted in culture medium/2% FCS (100 μ l/well)
4 for 5 days. Cell viability (mitochondrial activity) was measured according to the manufacturer's
5 protocol. Plates were incubated at 37°C for 1 h to 3 h and colorimetry was measured at 490 nM with
6 a Multiskan reader (ThermoFisher). The percentage of cell viability was normalized to medium-treated
7 cells (i.e. 100% viability) and to DMSO-treated cells for 2 h (i.e. 0% cell viability). Experiments were
8 done in triplicate.

9

10 **Flow cytometry analysis of the CD16-dependent NK92 cell responses for ADCC initiation (CD107a** 11 **degranulation and IFN γ production)**

12 Target (T) BxPC3, Sw1990, AsPC-1 and CFPAC cells (1×10^5) were co-cultured with huCD16a-
13 transfected NK92 effector (E) cells (60) at an E to T ratio of 1:2, in 200 μ l of RPMI medium. Suspended
14 cells (E+T) were co-incubated at 37°C with a saturating concentration of BiXAb™ (40 nM) for the initial
15 screening of the 30 BiXAb™, or with a saturating concentration of BiXAb™ (40 nM), parental 1MAbs
16 (66 nM), or 2MAbs (33 nM+33 nM) for the comparison of antibody treatments, and with the GolgiPlug
17 reagent that contains brefeldin A to block protein transport, and with (if not in the reagent) the PerCy5-
18 conjugated anti-CD107a antibody (1/20 dilution) to monitor degranulation of activated CD16⁺ NK92
19 cells. After 4 h of incubation, cells were washed, and incubated with APC-AF750-conjugated anti-CD16
20 (1/100 dilution) and ECD-conjugated anti-CD56 (1/25 dilution) antibodies (membrane CD16/CD56 co-
21 labeling) at 4°C for 30 min to distinguish CD16⁺ NK92 cells from tumor cells during flow cytometry
22 analysis. After cell fixation and permeabilization according to the supplier's recommendations
23 (#555028, BD Biosciences), intracellular IFN γ production by CD16⁺ NK92 cells was detected by
24 incubation with a phycoerythrin-conjugated anti-IFN γ antibody (1/10 dilution) at 4°C for 30 min. After
25 extensive washing, 10,000 events were acquired using a Gallios flow cytometer (Beckman Coulter).
26 The percentages of activated CD16⁺ NK92 cells that degranulated (CD107a⁺) or produced IFN γ (IFN γ ⁺)

1 and of cells that exerted both responses (CD107a⁺IFN γ ⁺) were compared by data analysis with the
2 Kaluza software (version 2.1; Beckman Coulter).

3

4 **Flow cytometry analysis of CDC initiation by expression of the C4c complement fraction**

5 After trypsin detachment, suspended BxPC3 cells (1×10^5) were incubated at 37°C with a 10
6 $\mu\text{g/ml}$ -saturating concentration of BiXAbTM, parental 1MAbs or 2MAbs in culture medium/1%
7 complete human serum (#ICSER-25ml; Serum Innovative Research, Novi, MI) for 30 min. C4c
8 complement fraction binding was revealed by labeling cells with a FITC-conjugated anti-C4c antibody
9 (1/100 dilution) at 4°C for 30 min. After washing, 10,000 events were acquired using a Gallios flow
10 cytometer. The mean fluorescence intensity (MFI) was quantified with the Kaluza software.

11

12 **Measurement of caspase 3/7 activation**

13 Caspase 3/7 activation was measured using the Caspase-Glo 3/7 assay kit (#G8091; Promega)
14 according to the manufacturer's protocol. Three thousand BxPC3 cells were cultured in 100 μl of
15 complete medium/10% FCS in 96-well flat-bottom plates (Starsted) for 24 h, before serum starvation
16 in culture medium/2% FCS for 24 h. After medium removal, cells were incubated with 330 nM 1MAbs,
17 BiXAbTM, or 2MAbs for 6 h or 24 h. Some cells were incubated with staurosporine (200 nM; positive
18 control for caspase 3/7 activation) at 37°C for 3 h. The Caspase-Glo 3/7 reagent, in which the
19 luminogenic caspase 3/7 substrate is mixed with the appropriate lysis buffer, was added to each well
20 for 30 min to 3 h. Caspase 3/7 activity was correlated with luciferase intensity recorded with a
21 Pherastar plate reader (BMG LabTech).

22

23 **Flow cytometry analysis of apoptosis**

24 Cell apoptosis was assessed using the Annexin V/7-AAD kit (#IM3614; Beckman Coulter)
25 according to the manufacturer's protocol. 100,000 BxPC3, Sw1990, and C-PDX P4604 cells were grown
26 in 1 ml of medium/10% FCS in 12-well plates (Sarstedt) at 37°C for 24 h, before serum starvation in

1 culture medium/2% FCS for 24 h. After medium removal, cells were incubated with various
2 concentrations of BiXAb™ or 2MAbs in medium/2% FCS at 37°C for 48 h. Some cells were incubated
3 with staurosporine (200 nM; positive control for apoptosis) at 37°C for 3 h. After centrifugation, the
4 cell pellet of each well was labeled with 10 µl of annexin-FITC and 20 µl of 7-AAD. After 15 min
5 incubation at 4°C in the dark, Annexin V/7-AAD labeling was measured with a Gallios flow cytometer
6 and analyzed with the Kaluza software.

7

8 **ELISA quantification of RTK expression**

9 RTK expression was evaluated with a sandwich ELISA using the PathScan® Cell Signaling Array
10 kits to quantify total EGFR (#7250), HER2 (#7310C) and HER3 (#7888C). 250,000 BxPC3, Sw1990, and
11 P4604 C-PDX cells were grown in 5 ml of complete medium/10% FCS in BP60 tissue culture dishes
12 (#83.3901; Sarstedt) at 37°C for 24 h, before serum starvation in medium/2% FCS for 24 h. After
13 medium removal, cells were incubated with 330 nM BiXAb™ or 1MAbs, or 330+330 nM of 2MAbs,
14 diluted in 4 ml of culture medium/2% FCS, at 37°C for 6 h. Some cells were incubated with EGF (16.6
15 nM) plus NRG1 (3.71 nM) for 6 h, as positive control. After washings in cold PBS and cell lysis with the
16 kit lysis reagent, EGFR, HER2 and HER3 sandwich ELISAs were performed according to the
17 manufacturer's protocols. Total EGFR, HER2 and HER3 protein levels were measured with a Pherastar
18 plate reader at 450 nm.

19

20 **Phosphoproteomic profiling of RTKs and signaling kinases**

21 The phosphoproteomic analysis of RTKs and downstream signaling kinases was performed
22 using the human phospho-RTK (49 targets, #ARY001B), and phospho-kinase (43 targets for #ARY003B
23 or 37 targets for ARY003C) array kits from Biotechne RD Systems. One million BxPC3, Sw1990, and C-
24 PDX P4604 cells were grown in 7 ml of culture medium/10% FCS in BP100 tissue culture dishes
25 (#83.3902; Sarstedt) at 37°C for 24 h, before serum starvation in medium/2% FCS for 24 h. After
26 medium removal, cells were incubated with 70 nM BiXAb™ or 1MAbs, or 70 nM + 70 nM 2MAbs (to

1 obtain Fab equimolarity), diluted in 6 ml of culture medium/2% FCS, at 37°C for 20 min. Then, the
2 ligand mixture (16.6 nM EGF plus 3.71 nM NRG1) was added at 37°C for 10 min. After removing excess
3 antibodies and ligands by washings with cold PBS, cells were lysed according to the manufacturer's
4 protocol, and proteins (300 µg of per condition) were loaded on spot membranes. Incubation and
5 revelation of spot membranes were performed with the reagents included in the kits and according to
6 the manufacturer's protocols. Spot images were acquired with a G:BOX apparatus (Syngene), and
7 phosphoproteomic analysis and quantification were performed with the GeneTools software
8 (Syngene).

9

10 **Xenografts of Sw1990 and PDX P2846 pancreatic cancer cells**

11 All *in vivo* experiments were performed in compliance with the French regulations and ethical
12 guidelines for experimental animal studies in an accredited establishment (Agreement No. C34-172-
13 27). Sw1990 cells (3x10⁶ cells per mouse) or the PDX P2846 at passage 8 (P8) since surgery (125 mm³
14 tumor piece per mouse) were injected subcutaneously in the right flank, or transplanted
15 intrascapularly in the brown fat, respectively, of 6 week/old female Swiss nude (CrI:NU(lco)-Foxn1nu)
16 mice from Charles River (Wilmington, MA). Tumor-bearing mice were randomized in the different
17 treatment groups (15 animals/group) when tumors reached a minimum volume of 100-150 mm³ for
18 Sw1990 cell xenografts and 200 mm³ for P2846 xenografts. Tumor size was measured with a caliper,
19 and volumes were calculated with the formula: $D_1 \times D_2 \times D_3 / 2$. During the initial *in vivo* experiments,
20 mice were treated with the three selected lead BiXAbTM 3Patri-1Cetu-Fc, 3Patri-1Matu-Fc, and 3Patri-
21 2Trastu-Fc (17 mg/kg) and the control CD3/CD19 BiXAbTM (BiXAbTM IRR; 17 mg/kg) by intraperitoneal
22 (ip) injection twice per week for 4 weeks (Q3D-4W). A second set of experiments was performed with
23 the lead BiXAbTM 3Patri-1Cetu-Fc at Fc (17 mg/kg) or BiXAbTM 3Patri-1Cetu-Fab (8.5 mg/kg) at
24 equimolar dose, the 3Patri (5mg/kg) + 1Cetu (5mg/kg) combination, the 1MAbs alone (3Patri or 1Cetu;
25 10mg/kg), and the control CD3/CD19 BiXAbTM (17mg/kg). For survival comparison, mice (10
26 animals/group) were sacrificed when tumor reached a volume of 1500 mm³. For *in vivo*

1 immunophenotyping and IHC analysis, mice (5 animals/group) were sacrificed after 15 days of
2 treatment (Q3D-2W) when tumor volume was ~250-500 mm³.

3

4 **Immunofluorescence and IHC analyses of tumor xenografts from BiXAb™-treated mice (Ki67, CD31,**
5 **BiXAb™ penetration)**

6 Surgically excised Sw1990 cell and P2846 xenografts were fixed in 10% neutral buffered
7 formalin for 24 h, dehydrated, and embedded in paraffin. Paraffin-embedded tissues were cut in 3-
8 μm-thick sections, mounted on slides, dried at 37°C overnight, deparaffinized in xylene, and
9 rehydrated in graded alcohols. Immunofluorescence was performed according to the manufacturer's
10 instructions using the Discovery Ultra autostainer (Ventana/Roche Diagnostics). For HER3
11 immunofluorescence analysis, antigen retrieval was performed with EnVision® Target Retrieval
12 Solution High pH (#GV804, Dako) at 97°C for 20 min, followed by incubation of tissue sections at 37°C
13 with the mouse monoclonal anti-HER3 antibody (1/25 dilution) for 1 h. The antigen-antibody reaction
14 was revealed using a rabbit anti-mouse pan IgG_{1,2,3} as the secondary antibody, and the Discovery Rabbit
15 HQ and Cy5 kits (Roche) in a Discovery Ultra autostainer (Roche). Immunofluorescence signals were
16 analyzed with a THUNDER Imager (Leica Microsystems; Wetzlar, Germany). For IHC analyses, following
17 deparaffination, antigen retrieval was performed by incubation with the Discovery CC1 buffer (Roche)
18 at 95°C for 24, 40, and 60 min for human IgG, Ki67 and CD31 detection, respectively. Slides were
19 incubated at 37°C with primary antibodies against human IgG (1/2000 dilution), Ki67 (1/500 dilution)
20 for 60 min, and with the primary antibody against CD31 (1/75 dilution) for 32 min. Signal enhancement
21 was performed with the Discovery DAB Rabbit OmniMap Kit (Roche) for Ki67 and with the Discovery
22 DAB Rabbit HQ Kit (Roche) for CD31 and human IgG. Slides were counterstained with hematoxylin for
23 8 min and manually dehydrated before mounting. Images were acquired with a Hamamatsu
24 NanoZoomer 2.0-HT scanner at the MRI facility, and images were visualized with the NDP.view 1.2.47
25 software.

26

1 **NK cell immunophenotyping in BiXAb™-treated tumor xenografts**

2 Xenografts from BiXAb™-treated mice (n=5/group) were excised one day after the last
3 injection (Q3D-2W schedule) in 1 mM EDTA-dissociating PBS buffer. Dissociation was performed using
4 the Tumor Dissociation Kit (#130095929; Miltenyi Biotec, Bergisch Gladbach, Germany) and the
5 gentleMACS Octo Dissociator (Miltenyi Biotec) according to the Miltenyi protocol for dense tumors.
6 One million of freshly-dissociated tumor cells were resuspended in 200 µl of FACS buffer (PBS, 2% FCS,
7 0.02% sodium azide, and 0.02% 1 mM EDTA). Each sample was pre-incubated with 50 µl of mouse FcR
8 Blocking Reagent (#130092575; Miltenyi Biotec) at 4°C for 1 h. After washings, cells were incubated
9 with a multicolor antibody panel containing AF700-conjugated anti-CD45 (1/400 dilution), Cy7-
10 conjugated anti-CD19 (1/200 dilution), PE-conjugated anti-CD3 (1/400 dilution), FITC-conjugated anti-
11 NKp46 (1/200 dilution), APC-conjugated anti-CD49b (1/200 dilution), and BV786-conjugated
12 antiCD107a (1/200 dilution) antibodies, diluted in FACS buffer, at 4°C for 1 h. Then, cells were fixed
13 and permeabilized using the fixation/permeabilization kit (#00512343; ThermoFisher) at 4°C for 40
14 min. Intracellular IFN γ staining was then performed with the BV421-conjugated anti-IFN γ antibody
15 (1/100 in FACS buffer). Immunophenotyping was performed with the LSRFortessa™ Cell Analyzer Flow
16 Cytometer (BD Biosciences). NK cells in BiXAb™-treated and untreated tumors were analyzed by
17 negative/positive selection of the CD45⁺, CD3⁻, CD19⁻, NKp46⁺, CD49b⁺, CD107a⁺ and/or IFN γ ⁺
18 phenotype.

19

20 **Western blot analysis of RTK expression in tumors**

21 Pieces of surgical excised xenografts were washed twice in cold PBS buffer, and then lysed with
22 RIPA lysis buffer (50 mM Tris-HCl pH 8, 150 mM NaCl, 0.5% sodium deoxycholate, 5 mM EDTA, 0.1%
23 SDS, 1% Triton X100) supplemented with a 1/100 solution of anti-phosphatase and -protease cocktail
24 (#7843; ThermoFisher), in tubes containing beads (MP lysing matrix; #6913100, ThermoFisher) for 20
25 min, and then for 10 min (by shaking at 4°C). After centrifugation at 13,000 g for 15 min, dilution in 1X
26 Laemmli buffer (60 mM Tris pH 6.8, 10% glycerol, 1% SDS), and heating at 95°C for 5 min, proteins (100

1 μg) were loaded on 4-15% pre-casted electrophoresis gels (#5671084; BioRad, Hercules, CA) and were
2 separated at 200 V constant voltage. After transfer using the Trans-blot Turbo Transfer System at
3 constant voltage (100 V) for 30 min, nitrocellulose membranes were saturated in PBS-T/5% skimmed
4 milk at room temperature for 1 h. Then, membranes were probed with primary antibodies diluted in
5 PBS-T/3% BSA/0.002% sodium azide at 4°C for 18 h, followed by fluorescent IRDye 800- or 680-
6 conjugated anti-rabbit or anti-mouse antibodies (1/20000 dilution) in BioRad blocking buffer
7 (#12010020) and 0.2% Tween-20 at room temperature for 1 h. Fluorescence signals were detected
8 with the Odyssey Fc Imaging System (LI-COR Biosciences).

9

10 **Data processing and network modeling**

11 Heatmaps were obtained with R and the ComplexHeatmap library (62). The HER/AKT/ERK
12 signaling models were computed using the aiMeRA R library (63). To cluster the antibodies on the basis
13 of the phenotypic response, we assigned each antibody to a feature vector that included AKT and ERK
14 activation (i.e. phosphorylation) rates in the six cell lines (BxPC3, AsPC-1, CFPAC, Sw1990, P4604,
15 SKBR3; 12 values in total), the sum of ADCC values measured in BxPC3, Sw1990, CFPAC, and AsPC-1
16 cells (this total was multiplied by 6 to balance with the other features), and the sum of the viability
17 percentages in BxPC3, BxPC3-GR, and P4604 cells (this total was multiplied by 3 to balance with the
18 other features). Based on these feature vectors, we used hierarchical clustering with Euclidean
19 distance (dist function in R) and Ward D method (hclust function in R).

20

21 **Statistical Analysis**

22 For *in vitro* assays, significance of comparisons among groups was determined using ANOVA
23 followed by the Dunnett's test (comparison with untreated cells). Significance between groups was
24 determined with the Student's *t*-test. Data were analyzed with GraphPad Prism 6 (San Diego, CA). The
25 relationship between tumor growth and treatment was analyzed using a linear mixed regression
26 model. The fixed part of the model included the variables 'number of days post-graft' and 'treatment

1 group'; interaction terms were also evaluated. Random intercepts and random slopes were included
2 to take into account the time effect. The model coefficients were estimated by maximum likelihood. A
3 survival analysis was performed and the event considered was a tumor volume of 1500 mm³. Survival
4 rates were estimated using the Kaplan-Meier method and survival curves were compared with the Log-
5 rank test. Statistical significance was set at $p < 0.05$. Statistical analyses were done with STATA 16 (Stata
6 Corporation, College Station, TX, USA). P-values: $p < 0.05$ (*), $p < 0.01$ (**), $p < 0.001$ (***), ns (not
7 significant).

1 Results

2 Design of 30 BiXAb™ targeting ErbB family members

3 Due to its controversial impact (64), we did not include HER4 targeting when we designed
4 BiXAb™ against ErbB family members. To cover as many configurations as possible within a reasonable
5 number of BiXAb™, we selected two parental antibodies for each receptor that target different
6 epitopes. We used the BiXAb™ platform (Figure 1A) to generate 30 tetravalent IgG1-like BiXAb™
7 comprising all possible combinations and orientations of the six ErbB antibodies (1Cetu and 1Matu,
8 2Pertu, and 2Trastu, 3Patri, 3Elgem) (Figure 1D). We adopted the nomenclature XMAb1-YMAb2-Fc to
9 describe the BiXAb™ antibodies in which X and Y refer to the targeted receptor (1 for EGFR, 2 for HER2,
10 and 3 for HER3), and MAb1 and MAb2 refer to the external Fab1 and internal Fab2 linked to the Fc
11 portion, respectively (Figure 1A).

12 We characterized the quality and integrity of the 30 BiXAb™ by SDS-PAGE, and checked their
13 purity and stability (Figures 1B and **Supplementary Figure 1**). BiXAb™ integrity was not influenced by
14 the external or internal positioning of 1Cetu and 2Pertu (Figure 1B and **Supplementary Figure 1A**). Size
15 exclusion chromatography demonstrated a major single peak of monomers and differential scanning
16 calorimetry confirmed that all BiXAb™ possessed sufficient thermodynamic stability (**Supplementary**
17 **Figure 1B-C**). We compared by ELISA the concentration-dependent binding of the 30 BiXAb™ to their
18 cognate receptors, and found EC₅₀ values generally within 1-3 fold of those of the parental 1Mab
19 (range: 0.05 - 3.02 nM), (Figure 1C-D), **Supplementary Figure 2**). Moreover, internal positioning of
20 1Matu, 2Pertu and 3Elgem significantly influenced the EC₅₀ (2-30 fold), but not of 1Cetu, 2Trastu and
21 3Patri (0-3 fold). However, the EC₅₀ was reduced (2-15 fold) when 1Matu and 2Pertu were positioned
22 externally. This suggested that this effect was probably not due to steric constraints of the BiXAb™
23 format, but rather to the properties of the individual Fabs. In general, with the exception of 1Matu and
24 2Pertu, the external positioning of the Fab arms had minimal, if any, impact on antigen binding. This
25 analysis also showed that several BiXAb™ had potent EC₅₀ values for both targets (1-3 fold),
26 irrespective of the positioning.

1 **BiXAb™ affect AKT and ERK phosphorylation, tumor cell viability, and ADCC initiation**

2 AKT and ERK are key signaling hubs to transduce ErbB-mediated phosphorylation, leading to
3 cell proliferation. EGF and NRG1 are the main ligands to induce AKT and ERK signaling as well as homo-
4 and hetero-dimerization of ErbB receptors (65). Therefore, we tested whether our BiXAb™ could block
5 EGF/NGR1-induced AKT and ERK phosphorylation in six tumor cell lines (Figure 2A and **Supplementary**
6 **Table 1**). In the three pancreatic cancer cell lines (BxPC3, AsPC-1 and CFPAC), most BiXAb™ inhibited
7 AKT phosphorylation, except 2Trastu-1Cetu-Fc and 2Trastu-1Matu-Fc (and the structural isomers). We
8 observed moderate to low reduction of AKT phosphorylation in Sw1990, C-PDX P4604, and SKBR3
9 (HER2-amplified breast cancer) cell lines. The BiXAb™ 1Cetu-1Matu-Fc and 1Matu-1Cetu-Fc
10 antibodies, which only target EGFR, had very little effect on AKT phosphorylation. ERK phosphorylation
11 changes in pancreatic cancer cell lines were more heterogeneous. The anti-EGFR/HER3 BiXAb™ 3Patri-
12 1Cetu-Fc, 3Patri-1Matu-Fc, and 3Elgem-1Cetu-Fc (and structural isomers) were the most efficient in
13 inhibiting ERK phosphorylation, except in Sw1990 cells where the anti-EGFR/HER2 BiXAb™ 1Cetu-
14 2Trastu-Fc and 1Cetu-2Pertu-Fc (and structural isomers) were the most potent. Conversely, anti-
15 HER2/HER3 BiXAb™ increased ERK phosphorylation. In SKBR3 cells, anti-EGFR/HER2 BiXAb™ inhibited
16 both AKT and ERK phosphorylation more efficiently than the other BiXAb™.

17 Most BiXAb™ inhibited cell viability by at least 50% in C-PDX P4604 cells, and in wild-type and
18 gemcitabine-resistant (GR) BxPC3 cells (Figure 2B; **Supplementary Table 2**). The anti-HER2/HER3
19 BiXAb™ 2Pertu-3Elgem-Fc and 3Patri-2Tastu-Fc, the anti-EGFR/HER2 BiXAb™ 1Matu-2Pertu-Fc and
20 2Trastu-1Matu-Fc, and the anti-EGFR/HER3 BiXAb™ 3Elgem-1Cetu-Fc, 3Elgem-1Matu-Fc, 3Patri-
21 1Cetu-Fc and 3Patri-1Matu-Fc were the most efficient in reducing cell viability.

22 To relate cell signaling and cell viability with immune-induced mechanisms, we investigated
23 Fc-dependent NK cell responses (*i.e.* degranulation for ADCC assessment and antibody-dependent
24 cytokine production) by dual CD107a/IFN γ labeling (Figure 2C; **Supplementary Table 3**), and
25 complement cascade initiation by C4c labeling (**Supplementary Figure 3**), following incubation of
26 BxPC3, Sw1990, CFPAC and AsPC-1 cells with different BiXAb™. Many BiXAb™ induced activation of

1 NK cells (Figure 2C), but not of the classical complement cascade (**Supplementary Figure 3**), except
2 1Matu-1Cetu-Fc as previously reported (66). Among the 30 BiXAb™, the anti-EGFR/HER3 BiXAb™ with
3 the Fab HER3 as Fab1 and the Fab EGFR as Fab2 were the most effective to initiate ADCC. Their
4 efficiency progressively increased from AsPC-1 to BxPC3 cells. EGFR valence was generally required to
5 induce ADCC, except for the anti-HER2/HER3 BiXAb™ 3Patri-2Trastu-Fc that was very efficient in
6 Sw1990 cells. In this case, the external position of the HER3 Fab was required to induce activation. All
7 BiXAb™ that target only one receptor showed lower ADCC activity, with the exception of 1Matu-1Cetu-
8 Fc (and structural isomers). The best BiXAb™ for ADCC induction were 3Patri-1Matu-Fc, 3Patri-1Cetu-
9 Fc, and 3Elgem-1Cetu-Fc.

10 On the basis of these results, we selected four molecules for further characterization: 2Trastu-
11 1Cetu-Fc, 3Patri-2Trastu-Fc, 3Patri-1Cetu-Fc, and 3Patri-1Matu-Fc that target EGFR/HER2, HER2/HER3,
12 and EGFR/HER3, respectively. These four BiXAbs™ (i) displayed EC₅₀ affinity values to their cognate
13 receptor quite similar (1-3 fold) to those of the parental 1MAbs (Figure 1D), (ii) were among the
14 strongest inhibitors of EGF/NRG1-induced phosphorylation of AKT and ERK (Figure 2A), (iii) were
15 among the most efficient in reducing cell viability (Figure 2B), and (iv) were strong ADCC inducers
16 (Figure 2C) in pancreatic cancer cell lines. Moreover, previous studies already demonstrated the
17 increased cytotoxicity of 2Trastu+1Cetu combination in pancreatic cancer models and in patients (10–
18 12,17).

19

20 **Bispecificity of the four selected lead BiXAb™**

21 To confirm the bispecificity of the four selected BiXAb™, we used a sandwich ELISA approach
22 to determine whether they simultaneously co-engaged their two cognate receptors through initial
23 engagement by the external (Figure 3, left panels) or internal (Figure 3, right panels) Fab arm, and then
24 binding of the second free Fab arm. The BiXAb™ 2Trastu-1Cetu-Fc, 3Patri-2Trastu-Fc, and 3Patri-
25 1Cetu-Fc showed nearly identical dose-dependent bispecific binding profiles (Figure 3A-C), with similar
26 EC₅₀ values regardless of the Fab engagement (between 0.25 nM and 1.7 nM). Conversely, the BiXAb™

1 3Patri-1Matu-Fc displayed better bispecific binding when initially immobilized to the HER3 receptor
2 via the external Fab 3Patri compared with immobilization through EGFR binding by the internal Fab
3 1Matu ($EC_{50} = 0.55$ nM and 170 nM, respectively) (Figure 3D). This significant binding loss could be due
4 to a greater dissociation constant of 1Matu or to steric hindrance that inhibits binding of soluble His-
5 tagged HER3 to the external Fab 3Patri when the internal Fab 1Matu is immobilized on EGFR. These
6 observations can be related to the results of the initial ELISA screening (Figure 1D and **Supplementary**
7 **Figure 2**) in which EC_{50} values for EGFR binding were worse when Fab 1Matu was involved in the
8 BiXAbTM core.

9

10 **Impact of the four lead BiXAbTM versus 2MAbs or 1MAbs on phosphoproteomic profiles and ErbB** 11 **member expression**

12 To compare more globally the changes triggered by the four lead BiXAbsTM and the respective
13 1MAbs and 2MAbs on ErbB/AKT/ERK signaling, we used two phosphoproteomic arrays that included
14 ~90 RTKs and downstream kinases to determine the whole phosphoproteomic profiles in three
15 pancreatic cancer cell lines. We initially measured the abundance of phosphorylated (i.e. activated)
16 proteins after stimulation of BxPC3, Sw1990 and C-PDX P4604 cells with the ligand mixture EGF + NRG1
17 (Figure 4A and **Supplementary Figure 4, Supplementary Tables 4 and 5**). We hypothesized that ligand-
18 stimulated cells reflected more accurately the tumor cell biology. We found that the
19 phosphoproteome was more efficiently inhibited by the four BiXAbTM and 2MAbs than 1MAbs, MEK
20 inhibitor and PI3K inhibitor. In some cases, especially in C-PDX P4604 cells, phosphorylation was
21 increased. BxPC3 cells were the most responsive to BiXAbTM and 2MAbs, whereas Sw1990 cells and
22 especially C-PDX P4604 cells were less affected. In all cell types, the BiXAbTM 3Patri-1Cetu-Fc displayed
23 the strongest inhibitory effect on the phosphoproteome, notably on intracellular kinases. 2Trastu-
24 1Cetu-Fc was the least efficient molecule. Some BiXAbTM affected the phosphoproteome profile in a
25 different manner compared with their matching 2MAbs (e.g., 3Patri-2Trastu-Fc and 3Patri-1Matu-Fc),
26 suggesting differences in the mechanisms of action. Overall, BiXAbTM were more inhibitory than 2MAbs

1 in approximately one third of all the phosphoproteomic experiments, showed equivalent inhibitory
2 effects in another one third, and were less effective than 2MAbs in the last third. In this last group, we
3 cannot rule out that the binding efficiency of one of the BiXAb™ arms might have been weakened in
4 the BiXAb™ format.

5 As ErbB computational models to understand the activity of antibody compounds were
6 previously performed by taking into account feedback loops in RTK signaling (5,6), we then assessed
7 the feedback loop strengths in BxPC3, Sw1990 and C-PDX P4604 cells (Figure 4B) by mathematical
8 modeling using the modular response analysis methodology (63,67). C-PDX P4604, the least responsive
9 cell line (Figure 4B, see also **Supplementary Figure 4**), also harbored the most deeply rewired signaling
10 network. This is in agreement with the known intrinsic resistance to therapy that can be caused by
11 strong feedback loops (5). Beside changes in downstream kinase signaling, increased ErbB degradation
12 is a well-known and important feature of treatment with antibodies against these RTKs. Data obtained
13 in the three pancreatic cancer cell lines (Figure 4C) revealed decreased expression of EGFR, HER2 and
14 HER3 (comparable profiles in all cell lines) upon incubation with BiXAb™ and 2MAbs, except for the
15 2MAbs 3Patri+1Cetu that led to increased HER2 expression in BxPC3 and C-PDX P4604 cells, unlike the
16 BiXAb™ 3Patri-1Cetu-Fc. The response was more receptor-specific with 1MAbs, which was expected.

17

18 **Impact of the four lead BiXAb™, 2MAbs and 1MAbs on ADCC initiation, cell viability, and cell** 19 **apoptosis**

20 Clinically-approved antibodies against ErbB receptors act predominantly through ADCC to
21 reduce tumor growth (56,57). To compare the impact of the four selected BiXAbs™ *versus* 2MAbs and
22 1MAbs on ADCC initiation (NK cell activation), we incubated co-cultures of BxPC3 or Sw1990 cells and
23 NK92 cells with 66 nM of BiXAb™, 2MAbs or 1MAbs, to maintain Fc equimolarity for all antibodies. In
24 cultures incubated with 1MAbs, the anti-EGFR antibody induced the highest activation of NK cells: from
25 12 to 20% for 1Cetu and from 15% to 24% for 1Matu, in function of the pancreatic target cancer cell
26 line (Figure 4D). We observed the lowest NK cell activation rate with the anti-HER2 1MAb 2Trastu, and

1 no activation with the anti-HER3 1MAb 3Patri (levels comparable to medium alone or rituximab).
2 2MAbs and BiXAb™ increased ADCC initiation, especially when 3Patri was present (Figure 4D). 2MAbs
3 were more effective than BiXAb™. However, 3Patri-2Trastu-Fc was the weakest ADCC inducer in BxPC3
4 cells (5% of activation), but the best inducer in Sw1990 cells (20% of activation), thus confirming the
5 results of Figure 2C. In both cell lines, the anti-EGFR/HER3 BiXAb™ 3Patri-1Cetu-Fc and 3Patri-1Matu-
6 Fc were the strongest ADCC inducers (10% to 28% activation), whereas 2Trastu-1Cetu-Fc was the least
7 effective. Altogether, the BiXAb™ format did not globally improve ADCC initiation compared with
8 2MAbs, at least when the anti-EGFR valence was involved. We obtained similar results for complement
9 cascade induction (**Supplementary Figure 3**), where the 1Cetu+1Matu combination induced CDC
10 activation, whereas the related BiXAb™ 1Matu-1Cetu-Fc and 1Cetu-1Matu-Fc did not.

11 To further compare the four lead BiXAbs™ and the respective 1MAbs and 2MAbs, we
12 determined whether they could inhibit viability and apoptosis of pancreatic cancer cell lines, as already
13 demonstrated for other antibodies (10,12,26,58). Three of the four lead BiXAb™ were more efficient
14 than 2MAbs or 1MAbs to reduce BxPC3 cell viability (Figure 4E): ~50% of viability reduction with 3Patri-
15 1Cetu-Fc and 2Trastu-1Cetu-Fc. Caspase 3/7 activation and apoptosis induction were comparable in
16 BxPC3, Sw1990 and C-PDX P4604 cells incubated with BiXAb™ or 2MAbs (Figure 4F). The anti-
17 EGFR/HER3 BiXAb™ 3Patri-1Cetu-Fc and 3Patri-1Matu-Fc strongly increased caspases 3/7 activation
18 at the early time point (6h) (**Supplementary Figure 5**).

19

20 **Initial pre-clinical evaluation of three lead BiXAb™**

21 On the basis of the *in vitro* comparison of the four lead BiXAb™ with their 2MAbs and 1MAb
22 counterparts, we eliminated 2Trastu-1Cetu-Fc (without HER3 valence) due to its lower potential to
23 inhibit the phosphoproteome and to induce ADCC. We then compared the antitumor efficacy of the
24 other three leads in mice xenografted with Sw1990 cells or the PDX P2846 (Figure 5A). We chose the
25 PDX P2846 because it was from an untreated patient at surgery time. At day 39 post-Sw1990 cell
26 xenograft (end of treatment), tumor growth inhibition was highest with 3Patri-1Cetu-Fc compared

1 with control IRR BiXAb™ (69%; $p < 0.001$ vs control), and also compared with 3Patri-1Matu-Fc (62%; p
2 < 0.001 vs control) and with 3Patri-2Trastu-Fc (42%; $p = 0.038$ vs control). In agreement, survival (Kaplan
3 Meier curves) was significantly increased by 15 days in mice treated with 3Patri-1Cetu-Fc- and with
4 3Patri-1Matu-Fc mice compared with IRR BiXAb™ ($p < 0.001$). 3Patri-2Trastu-Fc increased survival by
5 11 days. At day 45 post-PDX P2846 xenograft (end of treatment), tumor growth inhibition was highest
6 with 3Patri-1Cetu-Fc (87%; $p < 0.001$ compared with IRR BiXAb™), followed by 3Patri-2Trastu-Fc (77%;
7 $p < 0.001$ vs control) and 3Patri-1Matu-Fc (63%; $p = 0.038$ vs control). The median survival was increased
8 by 41 days in mice treated with 3Patri-1Cetu-Fc ($p < 0.001$ vs control), by 34 days in mice treated with
9 3Patri-2Trastu-Fc ($p < 0.001$ vs control) and by 9 days in the 3Patri-1Matu-Fc group ($p = 0.027$ vs control).

10 We monitored BiXAb™ penetration in Sw1990 cell xenografts by IHC using an anti-human Fc
11 antibody. BiXAb™, particularly 3Patri-1Cetu-Fc, deeply penetrated into the tumors as indicated by the
12 outer and inner core labeling in tumor tissue cryosections (Figure 5B-C). We did not observe any
13 labeling in tumor xenografts from mice treated with vehicle (NaCl) or IRR BiXAb™. Next, we
14 immunophenotyped NK cells within the tumors and quantified ErbB receptor expression. NK cell
15 immunophenotyping showed that treatment with ErbB-specific BiXAb™ increased the percentage of
16 CD49⁺ NKp46⁺ NK cells that expressed IFN γ /CD107 (Figure 6A), in line with our initial *in vitro* ADCC
17 results (Figures 2C and 4D). The three lead BiXAb™ also decreased receptor expression in xenografts,
18 as determined by immunofluorescence analysis of EGFR expression in 3Patri-1Cetu-Fc-treated
19 xenografts (Figure 6B) and by western blotting (EGFR, HER2, HER3 expression for all treatment groups)
20 (Figure 6C). Quantification of the western blot results (Figure 6D) showed that all three BiXAb™
21 similarly reduced EGFR expression. Conversely, 3Patri-2Trastu-Fc was most efficient in reducing HER2
22 expression, and 3Patri-1Cetu-Fc and 3Patri-1Matu-Fc in reducing HER3 expression.

23

24 **Pre-clinical evaluation of 3Patri-1Cetu-Fc, the best-in-class BiXAb™**

25 We selected the BiXAb™ 3Patri-1Cetu-Fc as best-in-class because it induced the strongest
26 tumor growth inhibition and longest median survival in xenografted mice. We compared the effect on

1 tumor growth of 3Patri-1Cetu-Fc (at equimolar doses of Fc: 17 mg/kg; or at equimolar doses of Fab:
2 8.5 mg/kg), of the 2MAb 3Patri+1Cetu (5+5 mg/kg), and of the parental 1MAbs 3Patri and 1Cetu (10
3 mg/kg). At day 38 post-Sw1990 cell xenograft (Figure 7, upper panel), tumor growth was reduced by
4 77% in mice treated with Fc equimolar doses of 3Patri-1Cetu-Fc ($p < 0.001$ vs IRR BiXAbTM), by 65% in
5 mice treated with 1Cetu+3Patri ($p < 0.001$), by 54% in mice treated with Fab equimolar doses of 3Patri-
6 1Cetu-Fc ($p < 0.001$), by 50% in mice treated with 1Cetu ($p < 0.001$) and by 43% in mice treated with
7 3Patri ($p < 0.001$). The median survival was increased by 18 days ($p < 0.001$) in mice treated with 17
8 mg/kg of 3Patri-1Cetu-Fc and with 3Patri+1Cetu, by 11 days in mice treated with 8.5 mg/kg of 3Patri-
9 1Cetu-Fc and with 3Patri, and by 7 days in mice treated with 1Cetu (Figure 7, upper panel). We
10 obtained similar results in mice xenografted with the PDX P2846 (Figure 7, lower panel). At day 60
11 post-graft (treatment end), tumor growth was reduced by 63%, 61%, 43%, 41%, and 19% in mice
12 treated with Fc equimolar doses of 3Patri-1Cetu-Fc ($p < 0.001$ compared with IRR BiXAbTM), with 2MAbs
13 ($p < 0.001$), with Fab equimolar doses of the BiXAbTM ($p < 0.001$), with 3Patri ($p < 0.001$), and with 1Cetu
14 ($p = 0.001$), respectively. Mouse survival was increased by 25 days in mice treated with 2MAbs
15 ($p = 0.002$), by 14 days in mice treated with 17 mg/kg BiXAbTM and 3Patri, by 7 days in mice treated with
16 8.5 mg/kg BiXAbTM, and by 4 days with 1Cetu.

17 The characterization of antibody penetration in Sw1990 cell xenografts and its quantification
18 in tumor xenografts from five mice/treatment group (Figure 8A) showed that most antibodies strongly
19 bound to tumor cells, except 3Patri. We observed no or low signal in tumor sections from mice treated
20 with IRR BiXAbTM (control). Moreover, in tumor tissue samples from mice treated with the BiXAbTM,
21 2MAbs, and 1MAbs, the density of CD31⁺ microvessels (Figure 8B) and the number of Ki67⁺ cells (Figure
22 8C) were reduced compared with control. We obtained similar results also in mice xenografted with
23 the PDX P2846, except for 1Cetu (**Supplementary Figure 6**). In both models, CD31⁺ microvessel density
24 was much lower in mice treated with 3Patri (against HER3) than 1Cetu (against EGFR) (Figure 8B and
25 **Supplementary Figure 6A**). The number of Ki67⁺ proliferating cells was lowest in the 1Cetu group in
26 the Sw1990 cell xenograft model (Figure 8C), but not in the PDX P2846 model where 1Cetu displayed

1 the lowest efficacy (**Supplementary Figure 6B**). 3Patri-1Cetu-Fc at Fc equimolar doses (17 mg/kg) was
2 the most effective to decrease EGFR and AXL expression, particularly in the PDX P2846 model
3 (**Supplementary Figure 7A-B**). Lastly, in Sw1990 cell xenografted mice, the proportion of CD49⁺ NKp46⁺
4 NK cells tended to increase mainly after treatment with 17 mg/kg of 3Patri-1Cetu-Fc (**Supplementary**
5 **Figure 7C**).

6

1 Discussion

2 Using BiXAb™, a novel tetravalent, bispecific antibody format platform, we explored the
3 positioning and activity of Fabs targeting the ErbB family of RTKs with the aim of identifying candidates
4 that could potentially be used for pancreatic cancer treatment. We combined pairs of Fabs to generate
5 BiXAb™ and assessed them in a screening funnel with functional (receptor binding and degradation,
6 cell signaling and growth inhibition, apoptosis induction) and immune-derived (ADCC and CDC)
7 readouts. To this end, we chose two parental mAbs for each ErbB family member (EGFR, HER2 and
8 HER3) and generated 30 BiXAb™ using the BiXAb™ platform that included all possible combinations
9 and with each Fab positioned on two symmetrical arms at the internal or external position of the
10 BiXAb™.

11 Recently, the affinity of a single binding interaction between a Fab fragment and its antigen
12 has been defined as the zero-order avidity in the model of response kinetics and thresholds that govern
13 antibody activities (68). Overall in our work, Fabs positioned externally (Fab1 position) and half of those
14 positioned internally (Fab2 position) had an affinity similar to that of the parental mAb (1-3 fold). Thus
15 the BiXAb™ format offers a versatile platform for the rapid generation of tetravalent bispecific
16 antibodies. The tetravalent nature of the BiXAb™ format allowed maintaining the “bivalent avidity”
17 towards the receptors observed for the parental mAbs, which is often not the case with some other
18 BsAb formats composed of monovalent antigen binders (40,42,43,51). On the basis of the recently
19 described dynamic model of antibody/antigen interaction (68), compared to BsAb formats with
20 monovalent antigen binding, the BiXAb™ format, with bivalent antigen-binding sites, should more
21 efficiently induce avidity-mediated interactions, such as antigen-antibody bivalent binding and
22 complex formation (first-order avidity) and clustering of antigen-antibody complexes on the cancer
23 cell surface (second-order avidity). However, we observed a reduction in affinity, referred as zero-
24 order avidity (68), for some of the parental mAbs positioned internally in the BiXAbs™. This could be
25 due to impeded access to the epitope. However, as matuzumab displayed reduced affinity also in the
26 external position in some combinations, this effect may not be linked to the internal positioning in the

1 BiXAb™ format. The importance of Fab positioning in tetravalent BsAbs has been underlined
2 previously (61,69). Differences in affinity for one of the targets might cause steric hindrance and limit
3 the access to the second target, unless reverse Fab positions are attempted. Our design of an original
4 “long-sized/hinge-derived” linker sequence (i.e. semi-rigid “pseudo-hinge linker” strategy) between
5 Fab1 and Fab2, which was derived from IgG1 and IgA1 hinge sequences that were spliced to create a
6 linker of suitable length, was meant to overcome such structural constraints. It should also be an
7 advantage to obtain bivalent BsAbs showing less flexible, short-sized hinges. Moreover, Wu et al. (69)
8 suggested that variable domains that bind to an antigen of larger molecular size should be
9 preferentially located at the external (N-terminal) position. Here, we did not observe any difference in
10 the molecular mass of the ErbB receptors, thus excluding this factor. Moreover, our data support the
11 hypothesis that the “long-sized/hinge-derived” linker generally allows efficient binding by the internal
12 Fab.

13 Jarantov *et al.* demonstrated that binding of the cMETxEGFR bivalent BsAb amivantamab (JNJ-
14 61186372) to tumor cells is guided by the most expressed of its two targeted receptors (70). HER2 and
15 HER3 are moderately expressed in pancreatic cancer, whilst EGFR is overexpressed. Therefore,
16 positioning the EGFR Fab internally in our BiXAb™ would take into account EGFR overexpression to
17 compensate for any potential loss in affinity due to positioning. Moreover, Fabs on the external
18 position might have a greater radius of movement that might favor Fab avidity to the second receptor
19 after binding to the first receptor. This effect should be more pronounced at low receptor density. Our
20 data support this hypothesis because in the best candidates, the anti-HER3 Fab was positioned
21 externally (3Patri) and the anti-EGFR Fab was positioned internally (1Cetux and 1Matu). In addition,
22 their ability to block ligand-induced signaling should be more pronounced against the less expressed
23 target, as shown for amivantamab (70). This might explain why BiXAb™ with 3Patri, 2Trastu and
24 3Elgem as the external Fab and EGFR as the internal Fab were identified as biologically active in the
25 initial screen.

1 The selection of Fab arms involving 1Cetu, 1Matu or 3Patri, 3Elgem as the best candidates in
2 our initial screen, irrespective of ligand competition, based on the robust downstream signaling
3 inhibition, and their ability to induce ADCC, suggested that ligand competition was not a prerequisite
4 for BiXAb™ efficacy. Indeed, we previously demonstrated that an allosteric anti-HER3 antibody, non-
5 NRG1 competitive, but with increased binding and biological efficacy in the presence of the ligand, was
6 much more active than an anti-HER3 antibody that competed with the ligand (71).

7 In pancreatic cancer cells, BiXAb™ targeting ErbB heterodimers inhibited the phosphoproteome and
8 cell proliferation better than homodimer-specific BiXAb™, unlike dual HER2 targeting of non-
9 overlapping epitopes by BsAbs (39) or 2MAbs (72) in breast cancer. This could be explained by the fact
10 that heterodimer-induced signaling is more robust and critical for cell tumorigenicity than homodimer-
11 mediated signaling (73). Moreover, most of the tested BiXAb™ induced stronger inhibition of cell
12 signaling and proliferation than the parental mAbs, but only one third of them displayed greater
13 efficacy than 2MAbs to influence the phosphoproteome profile. In this case, ErbB-specific BiXAb™
14 could simultaneously inhibit phosphorylation of HER2/HER3, of the underlying kinases, and also of
15 other RTKs, highlighting the strong cross-talk between RTKs (72,74). Among the BiXAb™ that most
16 strongly inhibited the phosphoproteome in pancreatic cancer cells stimulated with the EGF+NRG1
17 ligand mix, anti-EGFR/HER3 BiXAb™, including 3Patri-1Cetu-Fc and 3Patri-1Matu-Fc, were consistently
18 more effective. Moreover, EGFR targeting seems to be critical to induce ADCC activation and signaling
19 inhibition, an effect amplified by the external positioning of the anti-HER3 Fab arm.

20 The BiXAb™ were able to recruit and activate NK cells, in agreement with studies
21 demonstrating that Fabs harboring ErbB valences induce strong ADCC responses *in vitro* and *in vivo*
22 (10,75,76). The pivotal role of the anti-EGFR Fab arm to mediate ADCC activation by BiXAb™ and the
23 better capacity of 2MAbs with an EGFR valence to induce ADCC, compared with BiXAb™, could be
24 explained by the higher EGFR expression in the pancreatic cancer cell lines used in the present study.
25 As ADCC requires efficient receptor clustering to be fully operative, the most expressed target is
26 dominant in mediating ADCC. Therefore, an antibody combination would probably be better than a

1 bispecific format because bispecificity requires for cross-linking the binding to a close second receptor
2 (i.e. HER2 or HER3) that is 10-fold to 100-fold less abundant than EGFR. Conversely, when both targets
3 are expressed at similar levels, bispecificity is easier, leading to a clear benefit of BiXAb™ over antibody
4 combinations to favor receptor lattice and subsequent ADCC, as observed for 3Patri-2Trastu-Fc
5 compared with the 3Patri+2Trastu combination in Sw1990 cells.

6 Our *in vivo* experiments confirmed the interest of co-targeting EGFR and HER3 in pancreatic
7 cancer, in line with previous reports on the anti-EGFR/HER3 BsAb scDb hu225x3-43-Fc in breast and
8 head and neck cancers (52), duligotuzumab (MEHD7945A) (40,77) in colorectal cancer, and SI-B001
9 (41) in locally advanced and metastatic tumors. Despite the large molecular weight of the selected
10 BiXAb™ compared to parental MAbs, the 4Fab/IgG1 tetravalent BiXAb™ penetrated deeply within the
11 tumor xenografts and did not remain localized at the tumor periphery or in the stroma. Although
12 pancreatic cancer is a solid tumor with a dense stroma, this observation is in agreement with a previous
13 study showing that the fluorescein-conjugated anti-CEA antibody SGM-101, used to detect residual
14 tumor tissue during surgery, deeply penetrated in pancreatic tumors resected from 12 patients (78).
15 The combination of ErbB-specific mAbs show synergistic action *in vitro* and *in vivo* in various cancers
16 (10,18,31,79,80). The therapeutic benefit of BsAbs, compared with 2MAbs, is not limited to the
17 simultaneous targeting of two receptors, resulting in greater anti-tumor effects. They might also
18 preferentially concentrate on tumor cells that express both targets compared with healthy tissues that
19 do not express both receptors or express only one. This may broaden the therapeutic window, as
20 already demonstrated in patients with B lymphoma treated with an anti-CD19/CD22 BsAb (81). Indeed,
21 it has been proposed that BsAb avidity, which is due to their dual binding to two receptors, drives
22 preferential targeting and accumulation of compounds onto tumor cells compared with normal tissues
23 (70). This tumor selectivity depends on BsAb concentration (82,83), receptor density and
24 internalization/degradation (70,82,83), variable domain geometry, and hinge-related flexibility
25 (68,84). At low BsAb concentration, cell binding is dominated by first- and second-order avidity (68)
26 (bivalent binding of the two receptors). Conversely, the influence of monovalent binding (that depends

1 more on affinity or zero-order avidity (68)) increased as the BsAb concentration was increased (82). As
2 long as the affinity of either arm (monovalent binding) is not too high, a BsAb that targets one receptor
3 that is overexpressed on cancer cells should, through dual-receptor avidity, preferentially bind to
4 tumor cells rather than to healthy cells (70). This could be the case in our pancreatic models, where
5 EGFR density (between 150,000 and 300,000 receptors/cell) is greater than HER2 and HER3 density
6 (5,000-78,000 receptors/cell). Conversely, when density of the two targeted receptors is low or similar
7 (85,86), the intrinsic affinity of the monovalent BsAb arms predominates over the potential bivalent
8 avidity of 4Fab BsAb to trigger tumor binding selectivity. In addition, the binding (affinity vs avidity)
9 and biological activities of BsAbs are affected by variations in the antibody variable domain geometry,
10 correlated with the hinge region flexibility (84,87). Our original pseudo-hinge format between Fab1
11 and Fab2 probably facilitates BiXAb™ structural constraints, and optimizes the distance/orientation of
12 the four paratopes for efficient avidity interactions. Other factors, including IgG subclasses (84),
13 internalization and degradation (51,58,84,88) also can affect the affinity/avidity equilibrium of BsAb
14 interactions, and the subsequent therapeutic index. Moreover, the high affinity of tetravalent BiXAb™
15 (similar to that of mAbs), their potential ability to bind to FcRn via their functional Fc, and their larger
16 size (compared to the parental mAbs) may lead to more favorable pharmacokinetic/pharmacodynamic
17 profiles compared to those of mAbs or combinations. The use of BiXAb™ as a single-drug substance,
18 rather than a combination of mAbs, could be easily translated for industrial implementation and
19 bioprocessing (84).

20 Although anti-ErbB native antibodies have been used in the clinic for almost 30 years, no BsAb
21 that targets ErbB receptors has been approved yet. All ErbB-specific BsAbs currently in clinical trials
22 are in bivalent format (38,39,41,43), thus reducing their avidity potential for tumor cells. On the basis
23 of the biological activity of these BiXAbs™, after lead optimization, our lead 4Fab/IgG1 tetravalent
24 BiXAb™ 3Patri-1Cetu-Fc, 3Patri-1Matu-Fc, and 3Patri-2Trastu-Fc could improve the therapeutic
25 arsenal against pancreatic cancer.

1 **Author's Contributions**

2 Conception and design: A. Pèlegrin, T. Chardès, J. Colinge, E. Rabia

3 Development of methodology: E. Rabia, V. Garambois, C. Dhommée, G. Jimenez, C. Larbouret, S.

4 Choblet-Thery, E. Liaudet-Coopmann, M. Cerutti, M. Jarlier, P. Ravel, L. Lajoie, G. Thibault

5 Acquisition of data (provided facilities): Y. Buscail, L. Gros, N. Pirot

6 Analysis and interpretation of data: A. Pèlegrin, T. Chardès, J. Colinge, E. Zhukovsky, E. Rabia

7 Writing and review of the manuscript: T. Chardès, J. Colinge, E. Zhukovsky, E. Rabia, L; Lajoie, G.

8 Thibault, N. Pirot

9 Study supervision: A. Pèlegrin, P.-E. Gerard, T. Chardès, J. Colinge, E. Zhukovsky

10

11 **Fundings**

12 This work was supported by the French National Research Agency (ANR) under the Program

13 Investissement d'Avenir (grant agreement: Labex MabiImprove, ANR-10-LABX-53-01) and the ANR

14 contract DUALPanchER (grant agreement: ANR-16-CE17-002). ER and GJ were recipients of PhD

15 studentships from ANR, and CD was a recipient of an engineer fellowship from ANR.

16

17 **Acknowledgments**

18 The authors greatly appreciated Dr. S. Plyte (Biomunex Pharmaceuticals) for helpful scientific

19 discussion and corrections during the manuscript processing. The IRCM animal facility, PDX and MRI

20 platform staff are greatly acknowledged. We also acknowledged the "Réseau d'Histologie

21 Expérimentale de Montpellier" - RHEM facility supported by SIRIC Montpellier Cancer Grant

22 INCa_Inserm_DGOS_12553, the european regional development foundation and the occitanian region

23 (FEDER-FSE 2014-2020 Languedoc Roussillon), REACT-EU (Recovery Assistance for Cohesion and the

24 Territories of Europe), IBiSA and Ligue contre le cancer for processing our animal tissues, with histology

25 technics and expertise. We also thank Drs. H. Vié and B. Clemenceau (Nantes-Angers Cancer and

1 Immunology Research Center) for providing the CD16/Fc γ RIII (158V allotype)-transfected human NK92
2 cell line.

3

4 **Conflict of interest**

5 A. Pèlerin and C. Larbouret report a patent regarding a combination of anti-HER2 and anti-EGFR
6 antibodies (PCT/EP2009/012133). A. Pèlerin, C. Larbouret, P.-E. Gerard, and E. Zhukovsky report a
7 patent regarding anti-EGFR/HER2 bispecific antibodies (WO2017/186950). M. Cerutti and S. Choblet-
8 They report a patent regarding multi-specific antibodies (WO2013/005194). P.-E. Gerard and E.
9 Zhukovsky report a patent regarding polypeptide linkers and stable multi-specific antibodies
10 (WO2018/127608, WO2018/178101). One patent is pending regarding this work (application number
11 EP22305242.4). No disclosure concerning bispecific antibodies was reported by the other authors.

1 **Legends**

2 **Figure 1.** Biochemical characterization of ErbB-specific BiXAb™. (A) Schematic illustration of the
3 BiXAb™ platform. (B) Representative SDS-PAGE analysis of the BiXAb™ 1Cetu-2Pertu-Fc and 2Pertu-
4 1Cetu-Fc in non-reducing and reducing conditions. Proteins were stained with Coomassie brilliant blue.
5 IgG1 was used as control and molecular weight markers are indicated. Other BiXAb™ are in
6 Supplementary Figure 1. (C) Representative results of ELISA to assess binding of 1Cetu-2Pertu-Fc,
7 2Pertu-1Cetu-Fc, 1Cetu, and 2Pertu to immobilized EGFR (top panel) and HER2 (bottom panel). See
8 Supplementary Figure 2 for all antibodies used in this study. (D) EC₅₀ values extracted from ELISA
9 binding curves.

10

11 **Figure 2.** Screening of the 30 anti-ErbB BiXAb™. The dendrogram at the top represents phenotypic
12 similarity combining, with comparable weights, the quantities reported in panels A, B, and C, as
13 specified in the Methods section. (A) Inhibition of EGF/NRG1-induced phosphorylation of AKT and ERK
14 by the 30 BiXAb™. The indicated cell lines were stimulated with BiXAb™ for 20 min before adding a
15 mixture of NRG1 and EGF for another 10 min. The TR-FRET signal was measured relative to the maximal
16 activation (100%; medium) obtained in NRG1/EGFR-stimulated cells without BiXAb™. (B) Viability of
17 the indicated pancreatic cell lines after incubation with the 30 BiXAb™. (C) Antibody-Dependent Cell-
18 mediated Cytotoxicity (ADCC) induction by BiXAb™ through CD107a degranulation and IFN γ secretion.
19 Cells were co-incubated with CD16-transfected NK92 cells, and incubated with BiXAb™ for 4 h. The
20 percentage of effector NK cells positive for CD107a and/or IFN γ was measured by flow cytometry. Data
21 are the mean \pm SEM of three experiments. CDC analysis is in Supplementary Figure 3.

22

23 **Figure 3.** ELISA to assess the simultaneous binding of (A) 2Trastu-1Cetu-Fc to immobilized HER2 and
24 EGFR-His (left) and immobilized EGFR and HER2-His (right); (B) 3Patri-2Trastu-Fc to immobilized HER3
25 and HER2-His (left) and immobilized HER2 and HER3-His (right); (C) 3Patri-1Cetu-Fc to immobilized
26 HER3 and EGFR-His (left) and immobilized EGFR and HER3-His (right); and (D) 3Patri-1Matu-Fc to

1 immobilized HER3 and EGFR-His (left) and immobilized EGFR and HER3-His (right). The EC₅₀ values
2 calculated from the ELISA binding curves are indicated.

3

4 **Figure 4.** Comparison of the four lead BiXAbTM vs 2MAbs and single parental antibodies (1MAbs). **(A)**
5 Effect on the phosphoproteome. Cells were pre-stimulated with BiXAbTM, 2MAbs or 1MAbs for 20 min
6 before adding a mixture of NRG1 and EGF for 10 min. Activation rate is relative to the maximal (100%)
7 phosphorylation obtained in NRG1/EGFR-stimulated cells without antibodies. HulgG1 IRR and HLA-DR-
8 CD5-Fc were used as negative controls for 1MAbs and BiXAbTM, respectively. The tyrosine kinase
9 inhibitors iMEK and iPI3K were used for comparison. **(B)** Feedback loop strengths by modular response
10 analysis in the indicated pancreatic cancer cell lines. **(C)** Effect on ErbB expression. The indicated cell
11 lines were incubated with the indicated antibodies for 6 h. After cell lysis, EGFR, HER2 and HER3 levels
12 were evaluated by sandwich ELISA (RD Systems) using receptor-specific antibodies. The percentage of
13 expression was quantified relative to negative control (culture medium alone). The NRG1+EGF mixture
14 was used as positive control. **(D)** Effect on ADCC assessed by monitoring CD107a degranulation and
15 IFN γ secretion. The indicated cell lines were co-cultured with CD16-transfected NK92 cells and
16 incubated with BiXAbTM, 2MAbs or 1MAbs for 4 h. The percentage of effector NK cells positive for
17 CD107a and/or IFN γ was measured by flow cytometry. Rituximab was used as irrelevant antibody. Data
18 are the mean \pm SEM from three replicates. The NRG1 + EGF mixture was used as negative control of
19 ADCC. **(E)** Effect on cell viability. BxPC3 cells were incubated with BiXAbTM, 2MAbs or 1MAbs for 5 days,
20 and cell viability was measured using the MTS proliferation assay. **(F)** Effect on cell apoptosis. The
21 indicated cells were incubated with BiXAbTM or 2MAbs for 48 h, and then labeled with fluorescein-
22 conjugated Annexin V and 7-AminoActinomycin-D before apoptosis measurement (%) by flow
23 cytometry. Medium and staurosporine (3 h incubation) were used as negative and positive controls of
24 apoptosis, respectively. HLADR-CD5-Fc was used as irrelevant BiXAbTM. Caspase 3/7 activation is
25 reported in Supplementary Figure 5.

26

1 **Figure 5.** Pre-clinical evaluation of the three selected lead BiXAb™ 3Patri-2Trastu-Fc, 3Patri-1Matu-Fc,
2 and 3Patri-1Cetu-Fc. **(A)** Tumor growth (left) and survival (middle) of BiXAb™-treated mice
3 xenografted with Sw1990 and PDX P2846 PDAC cells. The percentage of tumor growth inhibition (TGI)
4 at treatment end, and the 50% survival benefit (days) are indicated in the right panel. **(B)**
5 Immunohistochemistry analysis of BiXAb™ penetration in Sw1990 cell xenografts. BiXAb™ were
6 detected using peroxidase-conjugated anti-human Fc. IRR BiXAb™, BiXAb™ targeting HLA-DR and CD5
7 (negative control). NaCl was used as negative control. **(C)** Tumor penetration of 3Patri-1Cetu-Fc
8 evaluated in whole tumor slices at lower magnification. The external (Ext) and internal (Int) parts of
9 the tumor slice are indicated.

10

11 **Figure 6.** NK cell engagement and receptor expression. **(A)** Immunophenotyping by flow cytometry of
12 NK cells in Sw1990 cell xenografts resected from BiXAb™-treated mice. Dissociated cells were labeled
13 with human CD49-, NKp46-, IFN γ - and CD107-specific antibodies. **(B)** Immunofluorescence analysis of
14 EGFR expression by immunofluorescence in 3Patri-1Cetu-Fc-, IRR BiXAb™- and NaCl-treated Sw1990
15 cell xenografts. **(C)** Western blot analysis of ErbB receptor expression in Sw1990 cell xenografts from
16 mice treated with NaCl, 3Patri-2Trastu-Fc, 3Patri-1Matu-Fc, or 3Patri-1Cetu-Fc. Tubulin was used as
17 loading control. **(D)** Western blots were quantified using the LI-COR Odyssey imaging system. ErbB
18 expression level was normalized to tubulin expression level. Each experiment was performed using
19 three Sw1990 cell xenografted mice. IRR BiXAb™, negative control. Data are the mean \pm SEM. P-values:
20 $p < 0.05$ (*), $p < 0.01$ (**), $p < 0.001$ (***), ns (not significant).

21

22 **Figure 7.** *In vivo* effects of the best-in-class BiXAb™ 3Patri-1Cetu-Fc versus 2MAbs and 1MAbs. Tumor
23 growth (left panel) and survival (middle panel) of mice xenografted with Sw1990 and PDX P2846 PDAC
24 cells treated with the indicated antibodies (n=10 mice/group). The percentage of tumor growth
25 inhibition (TGI), and the 50% survival benefit (days) are indicated in the right panel. The BiXAb™ 3Patri-
26 1Cetu-Fc was used at Fab equimolarity (8.5 mg/kg) or Fc equimolarity (17 mg/kg).

1 **Figure 8.** Characterization of 3Patri-1Cetu-Fc tumor penetration, and its effects on tumor angiogenesis
2 and proliferation in mice xenografted with Sw1990 cells. **(A)** Immunohistochemistry analysis of the
3 penetration of the BiXAb™ 3Patri-1Cetu-Fc, the 2MAbs 3Patri+1Cetu, and 3Patri and 1Cetu in tumor
4 xenograft sections (x20 magnification; left panels). Antibodies were detected with a peroxidase-
5 conjugated anti-human Fc. Human Fc-positive cells (right panel) were quantified in the whole tumor
6 section using the QuPath software. Immunohistochemistry analysis (x20 magnification; left panel) of
7 CD31 angiogenesis **(B)** and Ki67 proliferation **(C)** in Sw1990 cell xenografts. CD31⁺ microvessel density
8 was estimated as the mean value in ten histological fields using the Image J software. The percentage
9 of Ki-67⁺ cells in tumors was quantified in the whole tumor section using the Qupath software. IRR
10 BiXAb™, negative control BiXAb™. Data are the mean ± SEM (n=5 mice/group). P-values: p <0.05 (*),
11 p <0.01 (**), p <0.001 (***), ns (not significant). Immunohistochemistry analysis of P2846 xenografts
12 is in Supplementary Figure 6.

1 **Supplementary Figures**

2 **Supplementary Figure 1.** Biochemical characterization of the 30 BiXAb™. (A) SDS-PAGE analysis of the
3 indicated BiXAb™. (B) Size-exclusion chromatography of the BiXAb™ 2Trastu-1Matu-Fc, 1Matu-
4 2Pertu-Fc, 1Matu-2Trastu-Fc, and 2Pertu-1Matu-Fc and of the parental antibody 1Matu. (C)
5 Differential scanning calorimetry of the BiXAb™ 1Cetu-2Pertu-Fc, 2Pertu-1Cetu-Fc, 1Cetu-1Matu-Fc,
6 1Matu-1Cetu-Fc, 2Pertu-2Trastu-Fc, and 2Trastu-2Pertu-Fc.

7

8 **Supplementary Figure 2.** ELISA to test the monospecific binding of (A) anti-homodimer BiXAb™, (B)
9 anti-EGFR/HER2 BiXAb™, (C) anti-HER2/HER3 BiXAb™ and (D) anti-EGFR/HER3 BiXAb™ to
10 immobilized ErbB receptors. ErbB monomer-specific antibodies were used as positive controls.

11

12 **Supplementary Figure 3.** Screening of the 30 ErbB-specific BiXAb™. Initiation of complement-
13 dependent cytotoxicity by BiXAb™ through C4c activation. BxPC3 cells were incubated with BiXAb™
14 for 30min in the presence of 1% human serum. C4c deposition was analyzed by flow cytometry using
15 an anti-C4c antibody.

16

17 **Supplementary Figure 4.** Abundance of phosphokinases and phosphoreceptors in EGF/NRG1-
18 stimulated BxPC3 (A), Sw1990 (B) and C-PDX P4604 (c) cells.

19

20 **Supplementary Figure 5.** Comparison of the four pre-selected ErbB-specific BiXAb™ vs 2MAbs and
21 1MAbs. Induction of caspase 3/7 activation: BxPC3 cells were incubated with antibodies for 6 h or 24
22 h. After cell lysis and addition of a luminogenic caspase 3/7 substrate, signal intensity was measured
23 with a Pherastar reader at 490nm. Data are the mean±SEM of three experiments.

24

1 **Supplementary Figure 6.** *In vivo* effects of the lead BiXAbTM candidate 3Patri-1Cetu-Fc vs 2MAbs and
2 1MAbs in P2846 xenografted mice. Immunohistochemistry analysis (x20 magnification; left panels) of
3 CD31 expression (angiogenesis) **(A)** and Ki67 (cell proliferation) **(B)** in P2846 xenografts from mice
4 treated with the indicated antibodies. CD31⁺ microvessel density (MVD) was estimated as the mean
5 value from ten histological fields using Image J. The percentage of Ki-67⁺ cells in tumors was quantified
6 in the whole tumor section using the Qupath software. IRR BiXAbTM is a control BiXAbTM targeting CD19
7 and CD3. Data are the mean ± SEM (5 mice/group). P-values: p <0.05 (*), p <0.01 (**), p <0.001 (***),
8 ns (not significant).

9
10 **Supplementary Figure 7.** Receptor expression and NK cell immunophenotyping in 3Patri-1Cetu-Fc-
11 treated Sw1990 cell and P2846 xenografts. **(A)** EGFR and AXL expression analysis by western blotting.
12 Receptor expression in tumor xenografts from mice treated with 3Patri-1Cetu-Fc (17 mg/kg), 3Patri-
13 1Cetu-Fc (8.5 mg/kg), 3Patri + 1Cetu, 1Cetu and 3Patri-1 was visualized using the LI-COR Odyssey
14 imaging system. Tubulin was used as loading control. Each experiment was performed using samples
15 from five xenografted mice. IRR BiXAbTM, negative control. **(B)** Quantification of EGFR (top panels) and
16 AXL (bottom panels) expression using the LI-COR Odyssey imaging system. Expression was normalized
17 to tubulin. **(C)** NK cell immunophenotyping by flow cytometry. Dissociated cells were labeled with
18 human CD49-, NKp46-, IFN γ - and CD107-specific antibodies. Each experiment was performed using
19 five Sw1990 cell or P2846 xenografts, except for the phosphokinome profiling (two Sw1990 cell or
20 P2846 xenografts). IRR BiXAbTM, negative control. Data are the mean ± SEM. P-values: p <0.05 (*), p
21 <0.01 (**), p <0.001 (***), ns (not significant).

22

23

24

25

1 **Supplementary Tables**

2 **Supplementary Table 1.** Raw data of AKT and ERK activation (phosphorylation) in AsPC-1 (file 1), BxPC3
3 (file 2), CFPAC (file 3), C-PDX P4604 (file 4), Sw1990 (file 5), and SKBR-3 (file 6) cells incubated with the
4 indicated antibodies.

5

6 **Supplementary Table 2.** Raw data of cell viability for BxPC3 (file 1), gemcitabine-resistant BxPC3-GR
7 (file 2), and C-PDX P4604 (file 3) cells incubated with the indicated antibodies.

8

9 **Supplementary Table 3.** Raw data of CD107a degranulation and IFN γ secretion in NK92 cells co-
10 cultured with AsPC1 (file 1), BxPC3 (file 2), CFPAC (file 3), and Sw1990 (file 4) cells incubated with the
11 indicated antibodies.

12

13 **Supplementary Table 4.** Raw data of phosphokinase activation in C-PDX P4604 (file 1), BxPC3 (file 2),
14 and Sw1990 (file 3) cells incubated with the four lead BiXAbTM, the corresponding 2MAbs, or 1MAbs.

15

16 **Supplementary Table 5.** Raw data of phosphoreceptor activation in C-PDX P4604 (file 1), BxPC3 (file
17 2), and Sw1990 (file 3) cells incubated with the four lead BiXAbTM, the corresponding 2MAbs or 1MAbs.

18

1 References

- 2 1. Yarden Y, Pines G. The ERBB network: at last, cancer therapy meets systems biology. *Nat Rev*
3 *Cancer* (2012) 12:553–563. doi: 10.1038/nrc3309
- 4 2. Kirouac DC, Du JY, Lahdenranta J, Overland R, Yarar D, Paragas V, Pace E, McDonagh CF, Nielsen
5 UB, Onsum MD. Computational modeling of ERBB2-amplified breast cancer identifies combined
6 ErbB2/3 blockade as superior to the combination of MEK and AKT inhibitors. *Sci Signal* (2013)
7 6:ra68. doi: 10.1126/scisignal.2004008
- 8 3. Wilson TR, Lee DY, Berry L, Shames DS, Settleman J. Neuregulin-1-mediated autocrine signaling
9 underlies sensitivity to HER2 kinase inhibitors in a subset of human cancers. *Cancer Cell* (2011)
10 20:158–172. doi: 10.1016/j.ccr.2011.07.011
- 11 4. Brand TM, Iida M, Stein AP, Corrigan KL, Braverman CM, Luthar N, Toulany M, Gill PS, Salgia R,
12 Kimple RJ, et al. AXL mediates resistance to cetuximab therapy. *Cancer Res* (2014) 74:5152–
13 5164. doi: 10.1158/0008-5472.CAN-14-0294
- 14 5. Klinger B, Sieber A, Fritsche-Guenther R, Witzel F, Berry L, Schumacher D, Yan Y, Durek P,
15 Merchant M, Schäfer R, et al. Network quantification of EGFR signaling unveils potential for
16 targeted combination therapy. *Mol Syst Biol* (2013) 9:673. doi: 10.1038/msb.2013.29
- 17 6. Klinger B, Blüthgen N. Consequences of feedback in signal transduction for targeted therapies.
18 *Biochem Soc Trans* (2014) 42:770–775. doi: 10.1042/BST20140130
- 19 7. Fritsche-Guenther R, Witzel F, Sieber A, Herr R, Schmidt N, Braun S, Brummer T, Sers C,
20 Blüthgen N. Strong negative feedback from Erk to Raf confers robustness to MAPK signalling.
21 *Mol Syst Biol* (2011) 7:489. doi: 10.1038/msb.2011.27
- 22 8. Schoeberl B, Eichler-Jonsson C, Gilles ED, Müller G. Computational modeling of the dynamics of
23 the MAP kinase cascade activated by surface and internalized EGF receptors. *Nat Biotechnol*
24 (2002) 20:370–375. doi: 10.1038/nbt0402-370
- 25 9. Chen WW, Schoeberl B, Jasper PJ, Niepel M, Nielsen UB, Lauffenburger DA, Sorger PK. Input-
26 output behavior of ErbB signaling pathways as revealed by a mass action model trained against
27 dynamic data. *Mol Syst Biol* (2009) 5:239. doi: 10.1038/msb.2008.74
- 28 10. Larbouret C, Robert B, Navarro-Teulon I, Thèzenas S, Ladjemi M-Z, Morisseau S, Campigna E,
29 Bibeau F, Mach J-P, Pèlegriin A, et al. In vivo therapeutic synergism of anti-epidermal growth
30 factor receptor and anti-HER2 monoclonal antibodies against pancreatic carcinomas. *Clin*
31 *Cancer Res* (2007) 13:3356–3362. doi: 10.1158/1078-0432.CCR-06-2302
- 32 11. Larbouret C, Robert B, Bascoul-Mollevi C, Penault-Llorca F, Ho-Pun-Cheung A, Morisseau S,
33 Navarro-Teulon I, Mach J-P, Pèlegriin A, Azria D. Combined cetuximab and trastuzumab are
34 superior to gemcitabine in the treatment of human pancreatic carcinoma xenografts. *Ann Oncol*
35 (2010) 21:98–103. doi: 10.1093/annonc/mdp496
- 36 12. Larbouret C, Gaborit N, Chardès T, Coelho M, Campigna E, Bascoul-Mollevi C, Mach J-P, Azria D,
37 Robert B, Pèlegriin A. In pancreatic carcinoma, dual EGFR/HER2 targeting with
38 cetuximab/trastuzumab is more effective than treatment with trastuzumab/erlotinib or
39 lapatinib alone: implication of receptors' down-regulation and dimers' disruption. *Neoplasia*
40 (2012) 14:121–130.

- 1 13. Romaniello D, Mazzeo L, Mancini M, Marrocco I, Noronha A, Kreitman M, Srivastava S, Ghosh S,
2 Lindzen M, Salame TM, et al. A Combination of Approved Antibodies Overcomes Resistance of
3 Lung Cancer to Osimertinib by Blocking Bypass Pathways. *Clin Cancer Res* (2018) 24:5610–5621.
4 doi: 10.1158/1078-0432.CCR-18-0450
- 5 14. Marrocco I, Romaniello D, Vaknin I, Drago-Garcia D, Oren R, Uribe ML, Belugali Nataraj N,
6 Ghosh S, Eilam R, Salame T-M, et al. Upfront admixing antibodies and EGFR inhibitors preempts
7 sequential treatments in lung cancer models. *EMBO Mol Med* (2021) 13:e13144. doi:
8 10.15252/emmm.202013144
- 9 15. Rahib L, Smith BD, Aizenberg R, Rosenzweig AB, Fleshman JM, Matrisian LM. Projecting cancer
10 incidence and deaths to 2030: the unexpected burden of thyroid, liver, and pancreas cancers in
11 the United States. *Cancer Res* (2014) 74:2913–2921. doi: 10.1158/0008-5472.CAN-14-0155
- 12 16. Maron R, Schechter B, Mancini M, Mahlkecht G, Yarden Y, Sela M. Inhibition of pancreatic
13 carcinoma by homo- and hetero-combinations of antibodies against EGF-receptor and its kin
14 HER2/ErbB-2. *Proc Natl Acad Sci USA* (2013) 110:15389–15394. doi: 10.1073/pnas.1313857110
- 15 17. Assenat E, Azria D, Mollevi C, Guimbaud R, Tubiana-Mathieu N, Smith D, Delord J-P, Samalin E,
16 Portales F, Larbouret C, et al. Dual targeting of HER1/EGFR and HER2 with cetuximab and
17 trastuzumab in patients with metastatic pancreatic cancer after gemcitabine failure: results of
18 the “THERAPY” phase 1-2 trial. *Oncotarget* (2015) 6:12796–12808. doi:
19 10.18632/oncotarget.3473
- 20 18. Friedman LM, Rinon A, Schechter B, Lyass L, Lavi S, Bacus SS, Sela M, Yarden Y. Synergistic
21 down-regulation of receptor tyrosine kinases by combinations of mAbs: implications for cancer
22 immunotherapy. *Proc Natl Acad Sci USA* (2005) 102:1915–1920. doi: 10.1073/pnas.0409610102
- 23 19. Spangler JB, Neil JR, Abramovitch S, Yarden Y, White FM, Lauffenburger DA, Wittrup KD.
24 Combination antibody treatment down-regulates epidermal growth factor receptor by
25 inhibiting endosomal recycling. *Proc Natl Acad Sci USA* (2010) 107:13252–13257. doi:
26 10.1073/pnas.0913476107
- 27 20. Ferraro DA, Gaborit N, Maron R, Cohen-Dvashi H, Porat Z, Pareja F, Lavi S, Lindzen M, Ben-
28 Chetrit N, Sela M, et al. Inhibition of triple-negative breast cancer models by combinations of
29 antibodies to EGFR. *Proc Natl Acad Sci USA* (2013) 110:1815–1820. doi:
30 10.1073/pnas.1220763110
- 31 21. Kol A, Terwisscha van Scheltinga A, Pool M, Gerdes C, de Vries E, de Jong S. ADCC responses
32 and blocking of EGFR-mediated signaling and cell growth by combining the anti-EGFR
33 antibodies imgatuzumab and cetuximab in NSCLC cells. *Oncotarget* (2017) 8:45432–45446. doi:
34 10.18632/oncotarget.17139
- 35 22. Kasprzyk PG, Song SU, Di Fiore PP, King CR. Therapy of an animal model of human gastric cancer
36 using a combination of anti-erbB-2 monoclonal antibodies. *Cancer Res* (1992) 52:2771–2776.
- 37 23. Spiridon CI, Ghetie M-A, Uhr J, Marches R, Li J-L, Shen G-L, Vitetta ES. Targeting multiple Her-2
38 epitopes with monoclonal antibodies results in improved antigrowth activity of a human breast
39 cancer cell line in vitro and in vivo. *Clin Cancer Res* (2002) 8:1720–1730.
- 40 24. Ben-Kasus T, Schechter B, Lavi S, Yarden Y, Sela M. Persistent elimination of ErbB-2/HER2-
41 overexpressing tumors using combinations of monoclonal antibodies: relevance of receptor
42 endocytosis. *Proc Natl Acad Sci USA* (2009) 106:3294–3299. doi: 10.1073/pnas.0812059106

- 1 25. Gaborit N, Abdul-Hai A, Mancini M, Lindzen M, Lavi S, Leitner O, Mounier L, Chentouf M,
2 Dunoyer S, Ghosh M, et al. Examination of HER3 targeting in cancer using monoclonal
3 antibodies. *Proc Natl Acad Sci USA* (2015) 112:839–844. doi: 10.1073/pnas.1423645112
- 4 26. Thomas G, Chardès T, Gaborit N, Mollevi C, Leconet W, Robert B, Radosevic-Robin N, Penault-
5 Llorca F, Gongora C, Colombo P-E, et al. HER3 as biomarker and therapeutic target in pancreatic
6 cancer: new insights in pertuzumab therapy in preclinical models. *Oncotarget* (2014) 5:7138–
7 7148. doi: 10.18632/oncotarget.2231
- 8 27. Iida M, Brand TM, Starr MM, Huppert EJ, Luthar N, Bahrar H, Coan JP, Pearson HE, Salgia R,
9 Wheeler DL. Overcoming acquired resistance to cetuximab by dual targeting HER family
10 receptors with antibody-based therapy. *Mol Cancer* (2014) 13:242. doi: 10.1186/1476-4598-13-
11 242
- 12 28. Romaniello D, Marrocco I, Belugali Nataraj N, Ferrer I, Drago-Garcia D, Vaknin I, Oren R, Lindzen
13 M, Ghosh S, Kreitman M, et al. Targeting HER3, a Catalytically Defective Receptor Tyrosine
14 Kinase, Prevents Resistance of Lung Cancer to a Third-Generation EGFR Kinase Inhibitor.
15 *Cancers (Basel)* (2020) 12: doi: 10.3390/cancers12092394
- 16 29. Arena S, Siravegna G, Mussolin B, Kearns JD, Wolf BB, Misale S, Lazzari L, Bertotti A, Trusolino L,
17 Adjei AA, et al. MM-151 overcomes acquired resistance to cetuximab and panitumumab in
18 colorectal cancers harboring EGFR extracellular domain mutations. *Sci Transl Med* (2016)
19 8:324ra14. doi: 10.1126/scitranslmed.aad5640
- 20 30. Pedersen MW, Jacobsen HJ, Koefoed K, Dahlman A, Kjær I, Poulsen TT, Meijer P-J, Nielsen LS,
21 Horak ID, Lantto J, et al. Targeting Three Distinct HER2 Domains with a Recombinant Antibody
22 Mixture Overcomes Trastuzumab Resistance. *Mol Cancer Ther* (2015) 14:669–680. doi:
23 10.1158/1535-7163.MCT-14-0697
- 24 31. Pedersen MW, Jacobsen HJ, Koefoed K, Hey A, Pyke C, Haurum JS, Kragh M. Sym004: a novel
25 synergistic anti-epidermal growth factor receptor antibody mixture with superior anticancer
26 efficacy. *Cancer Res* (2010) 70:588–597. doi: 10.1158/0008-5472.CAN-09-1417
- 27 32. Mancini M, Gaborit N, Lindzen M, Salame TM, Dall’Ora M, Sevilla-Sharon M, Abdul-Hai A,
28 Downward J, Yarden Y. Combining three antibodies nullifies feedback-mediated resistance to
29 erlotinib in lung cancer. *Sci Signal* (2015) 8:ra53. doi: 10.1126/scisignal.aaa0725
- 30 33. Mancini M, Gal H, Gaborit N, Mazzeo L, Romaniello D, Salame TM, Lindzen M, Mahlknecht G,
31 Erika Y, Burton DG, et al. An oligoclonal antibody durably overcomes resistance of lung cancer
32 to third-generation EGFR inhibitors. *EMBO Mol Med* (2018) 10:294–308. doi:
33 10.15252/emmm.201708076
- 34 34. Jacobsen HJ, Poulsen TT, Dahlman A, Kjær I, Koefoed K, Sen JW, Weilguny D, Bjerregaard B,
35 Andersen CR, Horak ID, et al. Pan-HER, an Antibody Mixture Simultaneously Targeting EGFR,
36 HER2, and HER3, Effectively Overcomes Tumor Heterogeneity and Plasticity. *Clin Cancer Res*
37 (2015) 21:4110–4122. doi: 10.1158/1078-0432.CCR-14-3312
- 38 35. Schwarz LJ, Hutchinson KE, Rexer BN, Estrada MV, Gonzalez Ericsson PI, Sanders ME, Dugger TC,
39 Formisano L, Guerrero-Zotano A, Red-Brewer M, et al. An ERBB1-3 Neutralizing Antibody
40 Mixture With High Activity Against Drug-Resistant HER2+ Breast Cancers With ERBB Ligand
41 Overexpression. *J Natl Cancer Inst* (2017) 109: doi: 10.1093/jnci/djx065

- 1 36. Larbouret C, Gros L, Pèlegriin A, Chardès T. Improving Biologics' Effectiveness in Clinical
2 Oncology: From the Combination of Two Monoclonal Antibodies to Oligoclonal Antibody
3 Mixtures. *Cancers (Basel)* (2021) 13:4620. doi: 10.3390/cancers13184620
- 4 37. Labrijn AF, Janmaat ML, Reichert JM, Parren PW. Bispecific antibodies: a mechanistic review
5 of the pipeline. *Nat Rev Drug Discov* (2019) 18:585–608. doi: 10.1038/s41573-019-0028-1
- 6 38. Wei H, Cai H, Jin Y, Wang P, Zhang Q, Lin Y, Wang W, Cheng J, Zeng N, Xu T, et al. Structural
7 basis of a novel heterodimeric Fc for bispecific antibody production. *Oncotarget* (2017)
8 8:51037–51049. doi: 10.18632/oncotarget.17558
- 9 39. Meric-Bernstam F, Beeram M, Mayordomo JI, Hanna DL, Ajani JA, Blum Murphy MA, Murthy
10 RK, Piha-Paul SA, Bauer TM, Bendell JC, et al. Single agent activity of ZW25, a HER2-targeted
11 bispecific antibody, in heavily pretreated HER2-expressing cancers. *JCO* (2018) 36:2500–2500.
12 doi: 10.1200/JCO.2018.36.15_suppl.2500
- 13 40. Schaefer G, Haber L, Crocker LM, Shia S, Shao L, Dowbenko D, Totpal K, Wong A, Lee CV,
14 Stawicki S, et al. A two-in-one antibody against HER3 and EGFR has superior inhibitory activity
15 compared with monospecific antibodies. *Cancer Cell* (2011) 20:472–486. doi:
16 10.1016/j.ccr.2011.09.003
- 17 41. Xue J, Kong D, Yao Y, Yang L, Yao Q, Zhu Y, Ding Y, Yang F, Gong J, Shen L, et al. Prediction of
18 Human Pharmacokinetics and Clinical Effective Dose of SI-B001, an EGFR/HER3 Bi-specific
19 Monoclonal Antibody. *J Pharm Sci* (2020) 109:3172–3180. doi: 10.1016/j.xphs.2020.06.015
- 20 42. McDonagh CF, Huhlov A, Harms BD, Adams S, Paragas V, Oyama S, Zhang B, Luus L, Overland
21 R, Nguyen S, et al. Antitumor activity of a novel bispecific antibody that targets the
22 ErbB2/ErbB3 oncogenic unit and inhibits heregulin-induced activation of ErbB3. *Mol Cancer*
23 *Ther* (2012) 11:582–593. doi: 10.1158/1535-7163.MCT-11-0820
- 24 43. Geuijen CAW, De Nardis C, Maussang D, Rovers E, Gallenne T, Hendriks LJA, Visser T, Nijhuis R,
25 Logtenberg T, de Kruif J, et al. Unbiased Combinatorial Screening Identifies a Bispecific IgG1
26 that Potently Inhibits HER3 Signaling via HER2-Guided Ligand Blockade. *Cancer Cell* (2018)
27 33:922-936.e10. doi: 10.1016/j.ccell.2018.04.003
- 28 44. Schram AM, Odintsov I, Espinosa-Cotton M, Khodos I, Sisso WJ, Mattar MS, Lui AJW, Vojnic M,
29 Shameem SH, Chauhan T, et al. Zenocutuzumab, a HER2xHER3 Bispecific Antibody, Is Effective
30 Therapy for Tumors Driven by NRG1 Gene Rearrangements. *Cancer Discov* (2022) 12:1233–
31 1247. doi: 10.1158/2159-8290.CD-21-1119
- 32 45. Xu J, Ying J, Liu R, Wu J, Ye F, Xu N, Zhang Y, Zhao R, Xiang X, Wang J, et al. KN026 (anti-HER2
33 bispecific antibody) in patients with previously treated, advanced HER2-expressing gastric or
34 gastroesophageal junction cancer. *Eur J Cancer* (2022) 178:1–12. doi:
35 10.1016/j.ejca.2022.10.004
- 36 46. Zhang J, Ji D, Cai L, Yao H, Yan M, Wang X, Shen W, Du Y, Pang H, Lai X, et al. First-in-human
37 HER2-targeted Bispecific Antibody KN026 for the Treatment of Patients with HER2-positive
38 Metastatic Breast Cancer: Results from a Phase I Study. *Clin Cancer Res* (2022) 28:618–628. doi:
39 10.1158/1078-0432.CCR-21-2827
- 40 47. Meric-Bernstam F, Beeram M, Hamilton E, Oh D-Y, Hanna DL, Kang Y-K, Elimova E, Chaves J,
41 Goodwin R, Lee J, et al. Zanidatamab, a novel bispecific antibody, for the treatment of locally

- 1 advanced or metastatic HER2-expressing or HER2-amplified cancers: a phase 1, dose-escalation
2 and expansion study. *Lancet Oncol* (2022) 23:1558–1570. doi: 10.1016/S1470-2045(22)00621-0
- 3 48. Liu J, Wang L, Zhao F, Tseng S, Narayanan C, Shura L, Willingham S, Howard M, Prohaska S,
4 Volkmer J, et al. Pre-Clinical Development of a Humanized Anti-CD47 Antibody with Anti-Cancer
5 Therapeutic Potential. *PLoS One* (2015) 10:e0137345. doi: 10.1371/journal.pone.0137345
- 6 49. Wang S, Huang J, Lyu H, Cai B, Yang X, Li F, Tan J, Edgerton SM, Thor AD, Lee C-K, et al.
7 Therapeutic targeting of erbB3 with MM-121/SAR256212 enhances antitumor activity of
8 paclitaxel against erbB2-overexpressing breast cancer. *Breast Cancer Res* (2013) 15:R101. doi:
9 10.1186/bcr3563
- 10 50. Robinson MK, Hodge KM, Horak E, Sundberg AL, Russeva M, Shaller CC, von Mehren M,
11 Shchaveleva I, Simmons HH, Marks JD, et al. Targeting ErbB2 and ErbB3 with a bispecific single-
12 chain Fv enhances targeting selectivity and induces a therapeutic effect in vitro. *Br J Cancer*
13 (2008) 99:1415–1425. doi: 10.1038/sj.bjc.6604700
- 14 51. Rau A, Kocher K, Rommel M, Kühl L, Albrecht M, Gotthard H, Aschmoneit N, Noll B, Olayioye
15 MA, Kontermann RE, et al. A bivalent, bispecific Dab-Fc antibody molecule for dual targeting of
16 HER2 and HER3. *MAbs* (2021) 13:1902034. doi: 10.1080/19420862.2021.1902034
- 17 52. Rau A, Lieb WS, Seifert O, Honer J, Birnstock D, Richter F, Aschmoneit N, Olayioye MA,
18 Kontermann RE. Inhibition of Tumor Cell Growth and Cancer Stem Cell Expansion by a Bispecific
19 Antibody Targeting EGFR and HER3. *Mol Cancer Ther* (2020) 19:1474–1485. doi: 10.1158/1535-
20 7163.MCT-19-1095
- 21 53. Rau A, Janssen N, Kühl L, Sell T, Kalmykova S, Mürdter TE, Dahlke M-H, Sers C, Morkel M,
22 Schwab M, et al. Triple Targeting of HER Receptors Overcomes Heregulin-mediated Resistance
23 to EGFR Blockade in Colorectal Cancer. *Mol Cancer Ther* (2022) 21:799–809. doi: 10.1158/1535-
24 7163.MCT-21-0818
- 25 54. Hu S, Fu W, Xu W, Yang Y, Cruz M, Berezov SD, Jorissen D, Takeda H, Zhu W. Four-in-one
26 antibodies have superior cancer inhibitory activity against EGFR, HER2, HER3, and VEGF through
27 disruption of HER/MET crosstalk. *Cancer Res* (2015) 75:159–170. doi: 10.1158/0008-5472.CAN-
28 14-1670
- 29 55. Fitzgerald JB, Johnson BW, Baum J, Adams S, Iadevaia S, Tang J, Rimkunas V, Xu L, Kohli N,
30 Rennard R, et al. MM-141, an IGF-IR- and ErbB3-directed bispecific antibody, overcomes
31 network adaptations that limit activity of IGF-IR inhibitors. *Mol Cancer Ther* (2014) 13:410–425.
32 doi: 10.1158/1535-7163.MCT-13-0255
- 33 56. Musolino A, Naldi N, Bortesi B, Pezzuolo D, Capelletti M, Missale G, Laccabue D, Zerbini A,
34 Camisa R, Bisagni G, et al. Immunoglobulin G fragment C receptor polymorphisms and clinical
35 efficacy of trastuzumab-based therapy in patients with HER-2/neu-positive metastatic breast
36 cancer. *J Clin Oncol* (2008) 26:1789–1796. doi: 10.1200/JCO.2007.14.8957
- 37 57. Bibeau F, Lopez-Crapez E, Di Fiore F, Thezenas S, Ychou M, Blanchard F, Lamy A, Penault-Llorca
38 F, Frébourg T, Michel P, et al. Impact of Fc γ RIIa-Fc γ RIIIa polymorphisms and
39 KRAS mutations on the clinical outcome of patients with metastatic colorectal cancer treated
40 with cetuximab plus irinotecan. *J Clin Oncol* (2009) 27:1122–1129. doi:
41 10.1200/JCO.2008.18.0463

- 1 58. Rabia E, Garambois V, Hubert J, Bruciamacchie M, Pirot N, Delpech H, Broyon M, Theillet C,
2 Colombo P-E, Vie N, et al. Anti-tumoral activity of the Pan-HER (Sym013) antibody mixture in
3 gemcitabine-resistant pancreatic cancer models. *MAbs* (2021) 13:1914883. doi:
4 10.1080/19420862.2021.1914883
- 5 59. Gaborit N, Larbouret C, Vallaghe J, Peyrusson F, Bascoul-Mollevi C, Crapez E, Azria D, Chardès T,
6 Poul M-A, Mathis G, et al. Time-resolved fluorescence resonance energy transfer (TR-FRET) to
7 analyze the disruption of EGFR/HER2 dimers: a new method to evaluate the efficiency of
8 targeted therapy using monoclonal antibodies. *J Biol Chem* (2011) 286:11337–11345. doi:
9 10.1074/jbc.M111.223503
- 10 60. Clémenceau B, Vivien R, Pellat C, Foss M, Thibault G, Vié H. The human natural killer cytotoxic
11 cell line NK-92, once armed with a murine CD16 receptor, represents a convenient cellular tool
12 for the screening of mouse mAbs according to their ADCC potential. *MAbs* (2013) 5:587–594.
13 doi: 10.4161/mabs.25077
- 14 61. Golay J, Choblet S, Iwaszkiewicz J, Cérutti P, Ozil A, Loisel S, Pugnière M, Ubiali G, Zoete V,
15 Michielin O, et al. Design and Validation of a Novel Generic Platform for the Production of
16 Tetravalent IgG1-like Bispecific Antibodies. *J Immunol* (2016) 196:3199–3211. doi:
17 10.4049/jimmunol.1501592
- 18 62. Gu Z, Eils R, Schlesner M. Complex heatmaps reveal patterns and correlations in
19 multidimensional genomic data. *Bioinformatics* (2016) 32:2847–2849. doi:
20 10.1093/bioinformatics/btw313
- 21 63. Jimenez-Dominguez G, Ravel P, Jalaguier S, Cavailles V, Colinge J. An R package for generic
22 modular response analysis and its application to estrogen and retinoic acid receptor crosstalk.
23 *Sci Rep* (2021) 11:7272. doi: 10.1038/s41598-021-86544-0
- 24 64. Lucas LM, Dwivedi V, Senfeld JI, Cullum RL, Mill CP, Piazza JT, Bryant IN, Cook LJ, Miller ST, Lott
25 JH, et al. The Yin and Yang of ERBB4: Tumor Suppressor and Oncoprotein. *Pharmacol Rev* (2022)
26 74:18–47. doi: 10.1124/pharmrev.121.000381
- 27 65. Schoeberl B, Kudla A, Masson K, Kalra A, Curley M, Finn G, Pace E, Harms B, Kim J, Kearns J, et
28 al. Systems biology driving drug development: from design to the clinical testing of the anti-
29 ErbB3 antibody seribantumab (MM-121). *NPJ Syst Biol Appl* (2017) 3:16034. doi:
30 10.1038/npsba.2016.34
- 31 66. Dechant M, Weisner W, Berger S, Peipp M, Beyer T, Schneider-Merck T, Lammerts van Bueren
32 JJ, Bleeker WK, Parren PWHL, van de Winkel JGJ, et al. Complement-dependent tumor cell lysis
33 triggered by combinations of epidermal growth factor receptor antibodies. *Cancer Res* (2008)
34 68:4998–5003. doi: 10.1158/0008-5472.CAN-07-6226
- 35 67. Santra T, Rukhlenko O, Zhernovkov V, Kholodenko BN. Reconstructing static and dynamic
36 models of signaling pathways using Modular Response Analysis. *Current Opinion in Systems
37 Biology* (2018) 9:11–21. doi: 10.1016/j.coisb.2018.02.003
- 38 68. Oostindie SC, Lazar GA, Schuurman J, Parren PWHL. Avidity in antibody effector functions and
39 biotherapeutic drug design. *Nat Rev Drug Discov* (2022) 21:715–735. doi: 10.1038/s41573-022-
40 00501-8

- 1 69. Wu C, Ying H, Grinnell C, Bryant S, Miller R, Clabbers A, Bose S, McCarthy D, Zhu R-R, Santora L,
2 et al. Simultaneous targeting of multiple disease mediators by a dual-variable-domain
3 immunoglobulin. *Nat Biotechnol* (2007) 25:1290–1297. doi: 10.1038/nbt1345
- 4 70. Jarantow SW, Bushey BS, Pardinias JR, Boakye K, Lacy ER, Sanders R, Sepulveda MA, Moores SL,
5 Chiu ML. Impact of Cell-surface Antigen Expression on Target Engagement and Function of an
6 Epidermal Growth Factor Receptor × c-MET Bispecific Antibody. *J Biol Chem* (2015) 290:24689–
7 24704. doi: 10.1074/jbc.M115.651653
- 8 71. Le Clorennec C, Bazin H, Dubreuil O, Larbouret C, Ogier C, Lazrek Y, Garambois V, Poul M-A,
9 Mondon P, Barret J-M, et al. Neuregulin 1 Allosterically Enhances the Antitumor Effects of the
10 Noncompeting Anti-HER3 Antibody 9F7-F11 by Increasing Its Binding to HER3. *Mol Cancer Ther*
11 (2017) 16:1312–1323. doi: 10.1158/1535-7163.MCT-16-0886
- 12 72. Scheuer W, Friess T, Burtscher H, Bossenmaier B, Endl J, Hasmann M. Strongly enhanced
13 antitumor activity of trastuzumab and pertuzumab combination treatment on HER2-positive
14 human xenograft tumor models. *Cancer Res* (2009) 69:9330–9336. doi: 10.1158/0008-
15 5472.CAN-08-4597
- 16 73. Citri A, Yarden Y. EGF-ERBB signalling: towards the systems level. *Nat Rev Mol Cell Biol* (2006)
17 7:505–516. doi: 10.1038/nrm1962
- 18 74. Revach O-Y, Sandler O, Samuels Y, Geiger B. Cross-Talk between Receptor Tyrosine Kinases AXL
19 and ERBB3 Regulates Invadopodia Formation in Melanoma Cells. *Cancer Res* (2019) 79:2634–
20 2648. doi: 10.1158/0008-5472.CAN-18-2316
- 21 75. Clynes RA, Towers TL, Presta LG, Ravetch JV. Inhibitory Fc receptors modulate in vivo
22 cytotoxicity against tumor targets. *Nat Med* (2000) 6:443–446. doi: 10.1038/74704
- 23 76. Kurai J, Chikumi H, Hashimoto K, Yamaguchi K, Yamasaki A, Sako T, Touge H, Makino H, Takata
24 M, Miyata M, et al. Antibody-dependent cellular cytotoxicity mediated by cetuximab against
25 lung cancer cell lines. *Clin Cancer Res* (2007) 13:1552–1561. doi: 10.1158/1078-0432.CCR-06-
26 1726
- 27 77. Hill AG, Findlay MP, Burge ME, Jackson C, Alfonso PG, Samuel L, Ganju V, Karthaus M, Amatu A,
28 Jeffery M, et al. Phase II Study of the Dual EGFR/HER3 Inhibitor Duligotuzumab (MEHD7945A)
29 versus Cetuximab in Combination with FOLFIRI in Second-Line RAS Wild-Type Metastatic
30 Colorectal Cancer. *Clin Cancer Res* (2018) 24:2276–2284. doi: 10.1158/1078-0432.CCR-17-0646
- 31 78. Hoogstins CES, Boogerd LSF, Sibinga Mulder BG, Mieog JSD, Swijnenburg RJ, van de Velde CJH,
32 Farina Sarasqueta A, Bonsing BA, Framery B, Pèlegriin A, et al. Image-Guided Surgery in Patients
33 with Pancreatic Cancer: First Results of a Clinical Trial Using SGM-101, a Novel
34 Carcinoembryonic Antigen-Targeting, Near-Infrared Fluorescent Agent. *Ann Surg Oncol* (2018)
35 25:3350–3357. doi: 10.1245/s10434-018-6655-7
- 36 79. Nahta R, Hung M-C, Esteva FJ. The HER-2-targeting antibodies trastuzumab and pertuzumab
37 synergistically inhibit the survival of breast cancer cells. *Cancer Res* (2004) 64:2343–2346. doi:
38 10.1158/0008-5472.can-03-3856
- 39 80. Nami B, Maadi H, Wang Z. Mechanisms Underlying the Action and Synergism of Trastuzumab
40 and Pertuzumab in Targeting HER2-Positive Breast Cancer. *Cancers (Basel)* (2018) 10:E342. doi:
41 10.3390/cancers10100342

- 1 81. Schmohl JU, Todhunter D, Taras E, Bachanova V, Vallera DA. Development of a Deimmunized
2 Bispecific Immunotoxin dDT2219 against B-Cell Malignancies. *Toxins (Basel)* (2018) 10:E32. doi:
3 10.3390/toxins10010032
- 4 82. Zheng S, Moores S, Jarantow S, Pardinias J, Chiu M, Zhou H, Wang W. Cross-arm binding
5 efficiency of an EGFR x c-Met bispecific antibody. *MAbs* (2016) 8:551–561. doi:
6 10.1080/19420862.2015.1136762
- 7 83. Rhoden JJ, Dyas GL, Wroblewski VJ. A Modeling and Experimental Investigation of the Effects of
8 Antigen Density, Binding Affinity, and Antigen Expression Ratio on Bispecific Antibody Binding
9 to Cell Surface Targets. *J Biol Chem* (2016) 291:11337–11347. doi: 10.1074/jbc.M116.714287
- 10 84. Huang S, van Duijnhoven SMJ, Sijts AJAM, van Elsas A. Bispecific antibodies targeting dual
11 tumor-associated antigens in cancer therapy. *J Cancer Res Clin Oncol* (2020) 146:3111–3122.
12 doi: 10.1007/s00432-020-03404-6
- 13 85. Mazor Y, Hansen A, Yang C, Chowdhury PS, Wang J, Stephens G, Wu H, Dall’Acqua WF. Insights
14 into the molecular basis of a bispecific antibody’s target selectivity. *MAbs* (2015) 7:461–469.
15 doi: 10.1080/19420862.2015.1022695
- 16 86. Mazor Y, Sachsenmeier KF, Yang C, Hansen A, Filderman J, Mulgrew K, Wu H, Dall’Acqua WF.
17 Enhanced tumor-targeting selectivity by modulating bispecific antibody binding affinity and
18 format valence. *Sci Rep* (2017) 7:40098. doi: 10.1038/srep40098
- 19 87. Gu J, Yang J, Chang Q, Lu X, Wang J, Chen M, Ghayur T, Gu J. Identification of anti-ErbB2 dual
20 variable domain immunoglobulin (DVD-IgTM) proteins with unique activities. *PLoS One* (2014)
21 9:e97292. doi: 10.1371/journal.pone.0097292
- 22 88. Gong S, Ren F, Wu D, Wu X, Wu C. Fabs-in-tandem immunoglobulin is a novel and versatile
23 bispecific design for engaging multiple therapeutic targets. *MAbs* (2017) 9:1118–1128. doi:
24 10.1080/19420862.2017.1345401

25

Fig.1

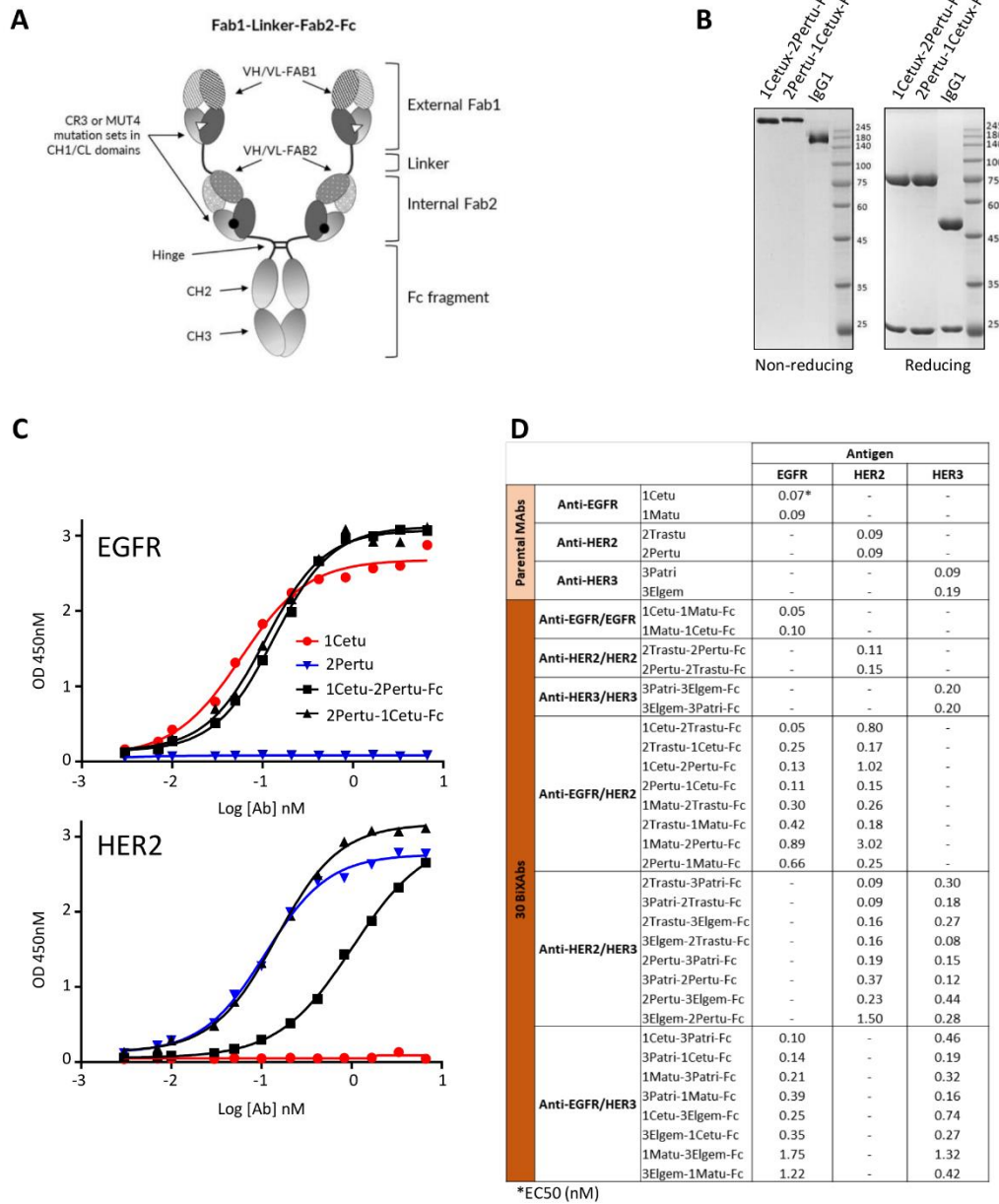
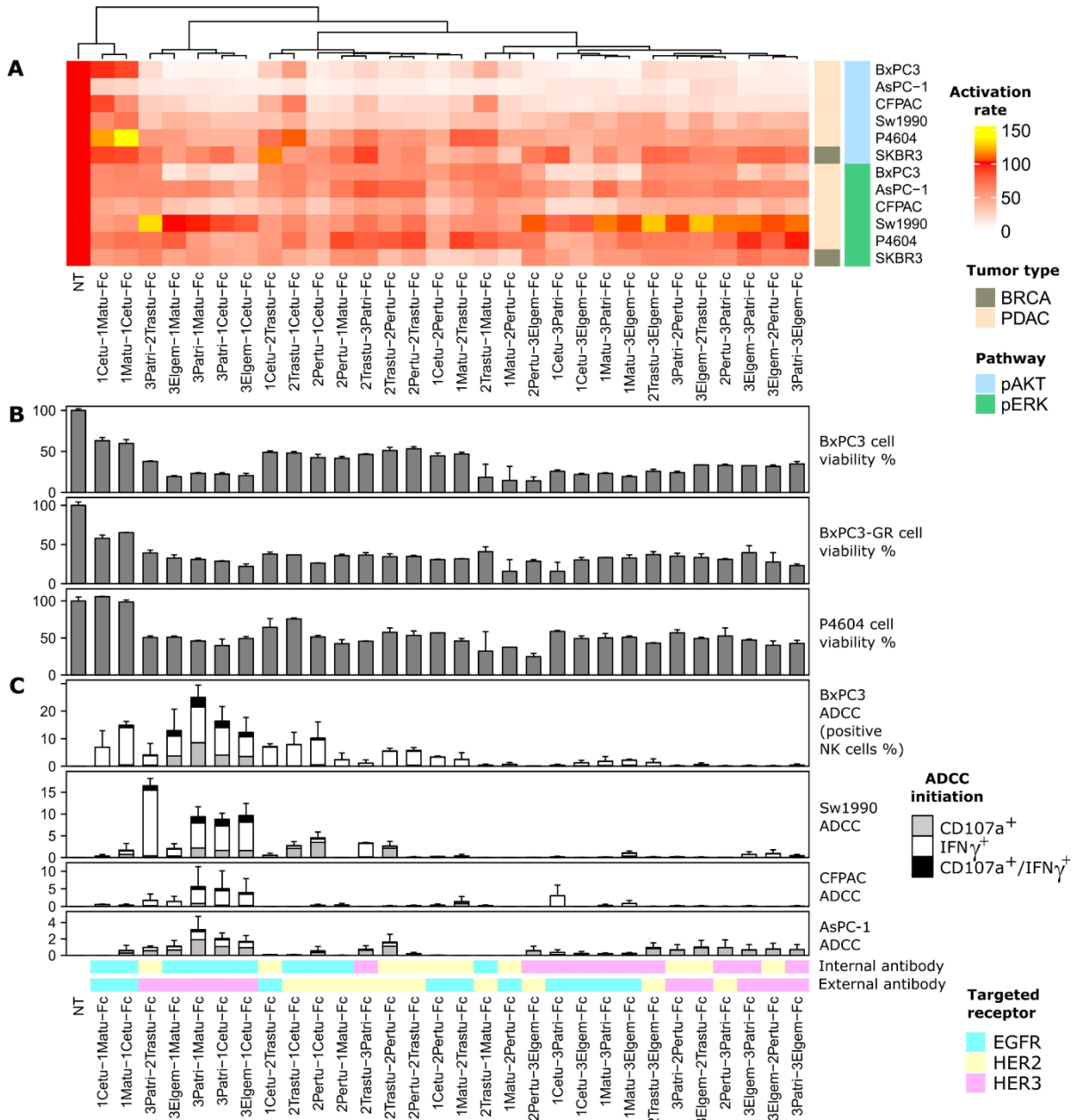


Figure 1. Biochemical characterization of ErbB-specific BiXAb™. **(A)** Schematic illustration of the BiXAb™ platform. **(B)** Representative SDS-PAGE analysis of the BiXAb™ 1Cetu-2Pertu-Fc and 2Pertu-1Cetu-Fc in non-reducing and reducing conditions. Proteins were stained with Coomassie brilliant blue. IgG1 was used as control and molecular weight markers are indicated. Other BiXAb™ are in Supplementary Figure 1. **(C)** Representative results of ELISA to assess binding of 1Cetu-2Pertu-Fc, 2Pertu-1Cetu-Fc, 1Cetu, and 2Pertu to immobilized EGFR (top panel) and HER2 (bottom panel). See Supplementary Figure 2 for all antibodies used in this study. **(D)** EC₅₀ values (nM) extracted from ELISA binding curves.

1

2



1
2

Fig.3

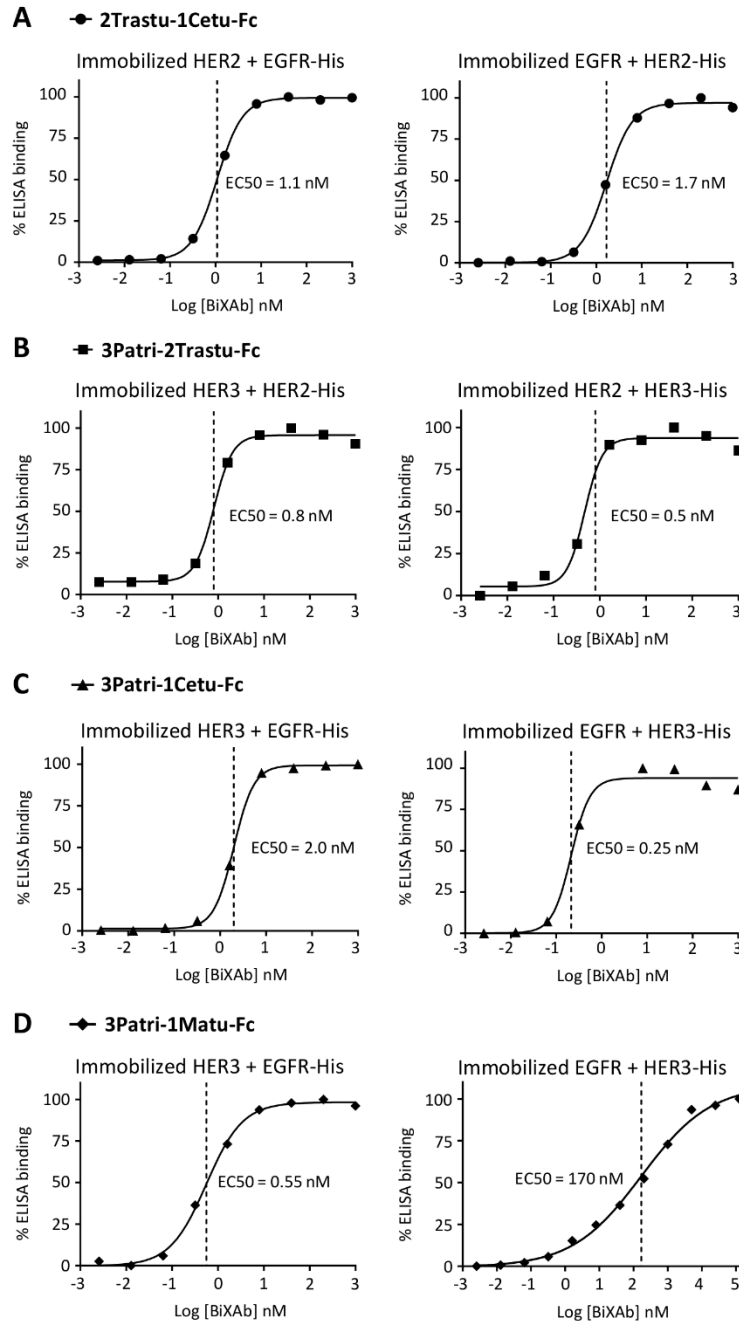
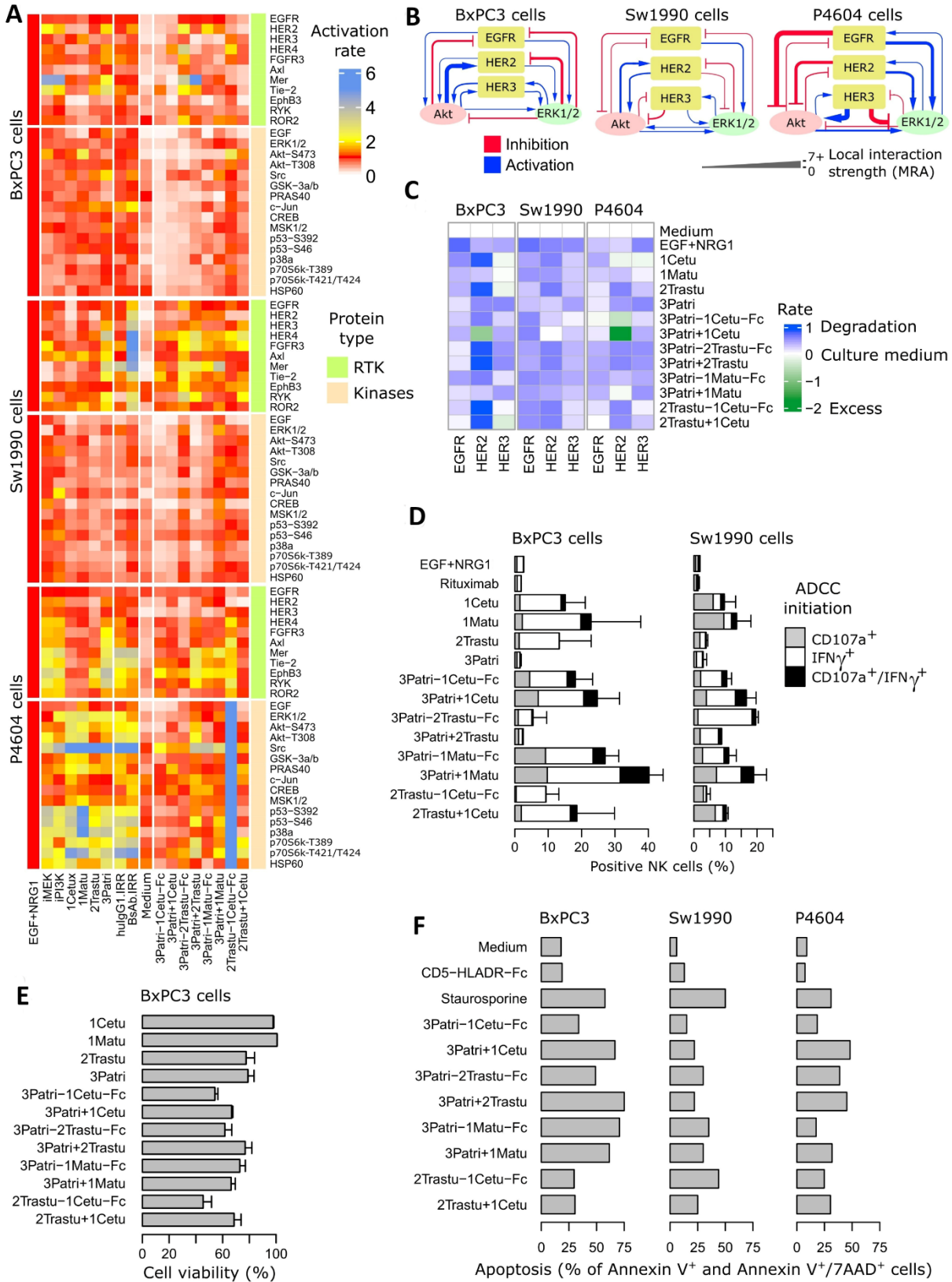


Figure 3. ELISA to assess the simultaneous binding of (A) 2Trastu-1Cetu-Fc to immobilized HER2 and EGFR-His (left) and immobilized EGFR and HER2-His (right); (B) 3Patri-2Trastu-Fc to immobilized HER3 and HER2-His (left) and immobilized HER2 and HER3-His (right); (C) 3Patri-1Cetu-Fc to immobilized HER3 and EGFR-His (left) and immobilized EGFR and HER3-His (right); and (D) 3Patri-1Matu-Fc to immobilized HER3 and EGFR-His (left) and immobilized EGFR and HER3-His (right). The EC_{50} values calculated from the ELISA binding curves are indicated (nM).

1

2

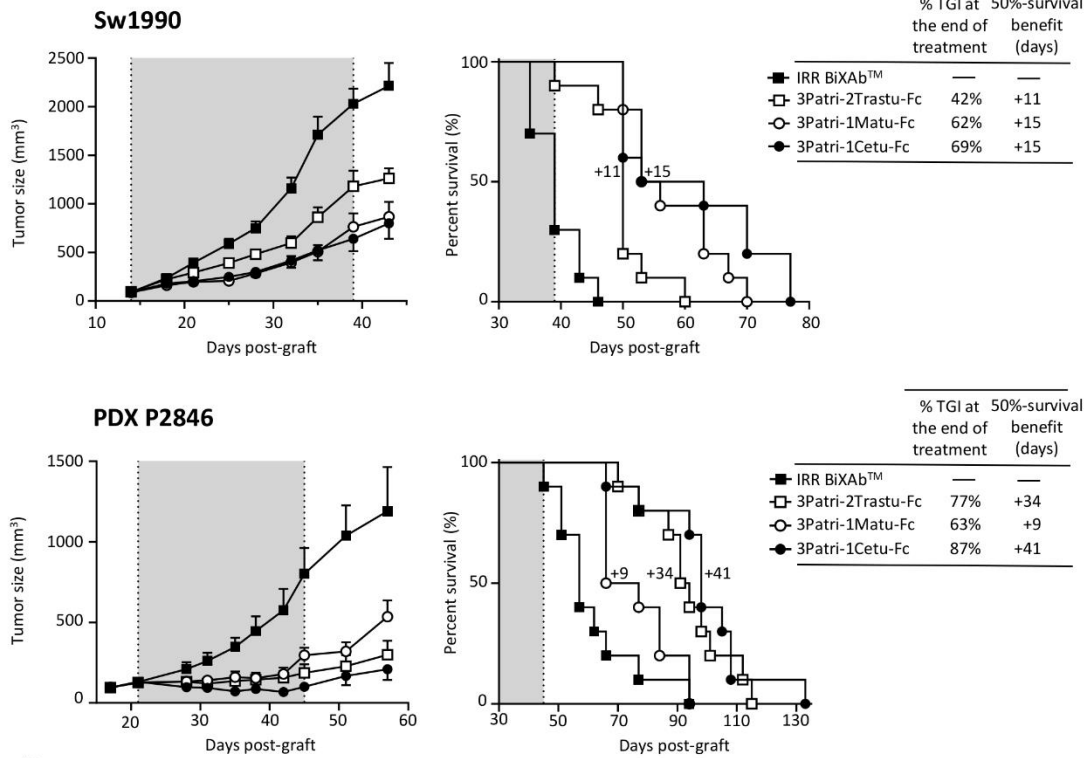


1

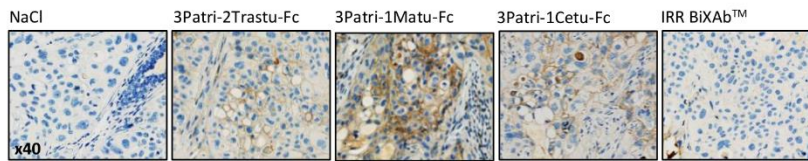
2

Fig.5

A



B



C

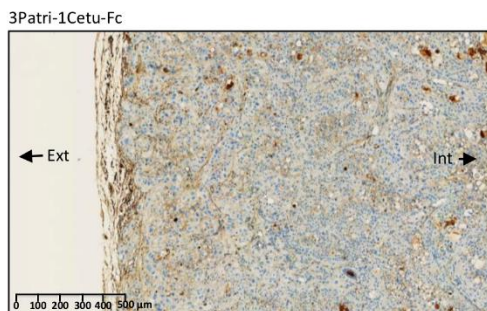


Figure 5. Pre-clinical evaluation of the three selected lead BiXAb™ 3Patri-2Trastu-Fc, 3Patri-1Matu-Fc, and 3Patri-1Cetu-Fc. (A) Tumor growth (left) and survival (middle) of BiXAb™-treated mice xenografted with Sw1990 and PDX P2846 PDAC cells. The percentage of tumor growth inhibition (TGI) at treatment end, and the 50% survival benefit (days) are indicated in the right panel. (B) Immunohistochemistry analysis of BiXAb™ penetration in Sw1990 cell xenografts. BiXAb™ were detected using peroxidase-conjugated anti-human Fc. IRR BiXAb™, BiXAb™ targeting HLA-DR and CD5 (negative control). NaCl was used as negative control. (C) Tumor penetration of 3Patri-1Cetu-Fc in the whole tumor slice at lower magnification. External (Ext) and internal (Int) parts of the tumor slice are indicated.

1

2

Fig.6

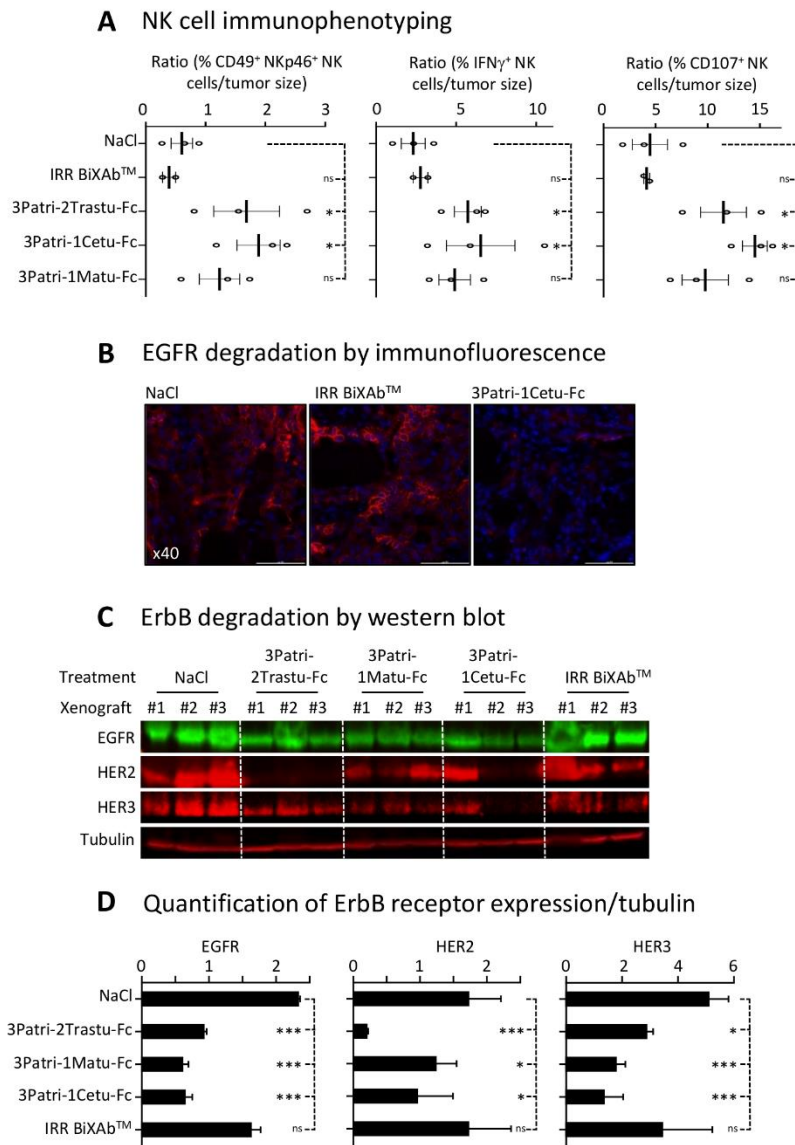


Figure 6. NK cell engagement and receptor expression. (A) Immunophenotyping by flow cytometry of NK cells in Sw1990 cell xenografts resected from BiXAb™-treated mice. Dissociated cells were labeled with human CD49-, Nkp46-, IFN γ - and CD107-specific antibodies. (B) Immunofluorescence analysis of EGFR expression by immunofluorescence in 3Patri-1Cetu-Fc-, IRR BiXAb™- and NaCl-treated Sw1990 cell xenografts. (C) Western blot analysis of ErbB receptor expression in Sw1990 cell xenografts from mice treated with NaCl, 3Patri-2Trastu-Fc, 3Patri-1Matu-Fc, or 3Patri-1Cetu-Fc. Tubulin was used as loading control. (D) Western blots were quantified using the LI-COR Odyssey imaging system. ErbB expression level was normalized to tubulin expression level. Each experiment was performed using three Sw1990 cell xenografted mice. IRR BiXAb™, negative control. Data are the mean \pm SEM. P-values: $p < 0.05$ (*), $p < 0.01$ (**), $p < 0.001$ (***), ns (not significant).

1

2

Fig.7

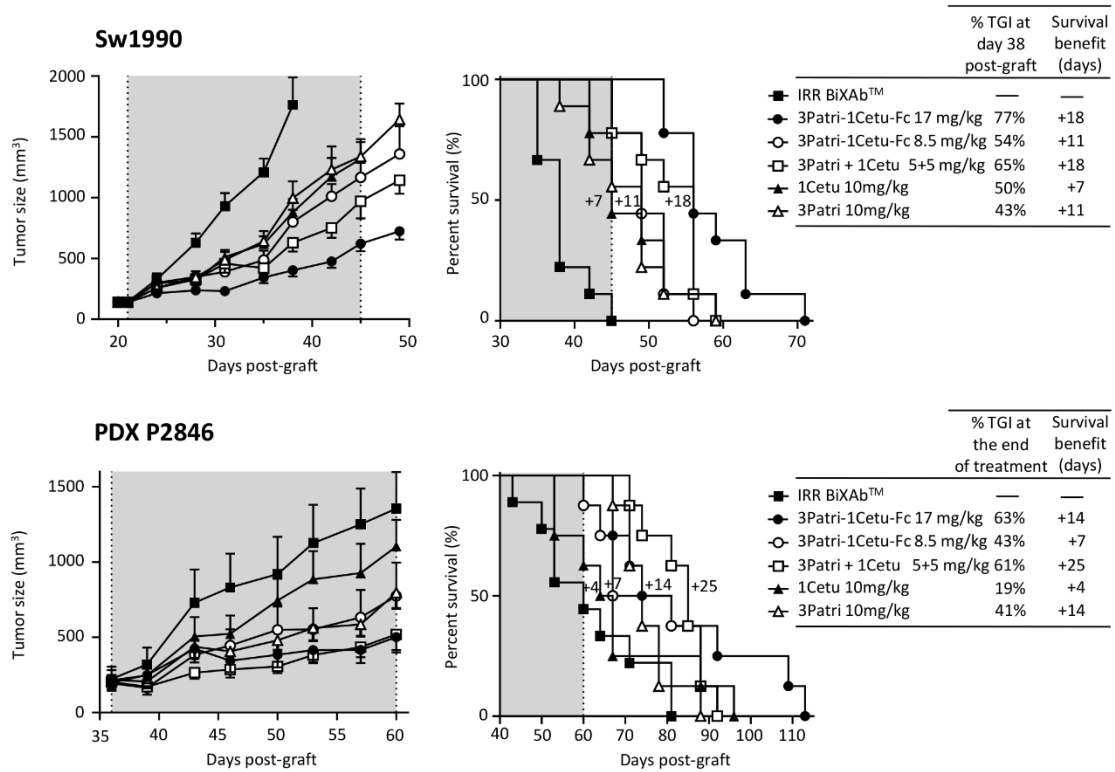
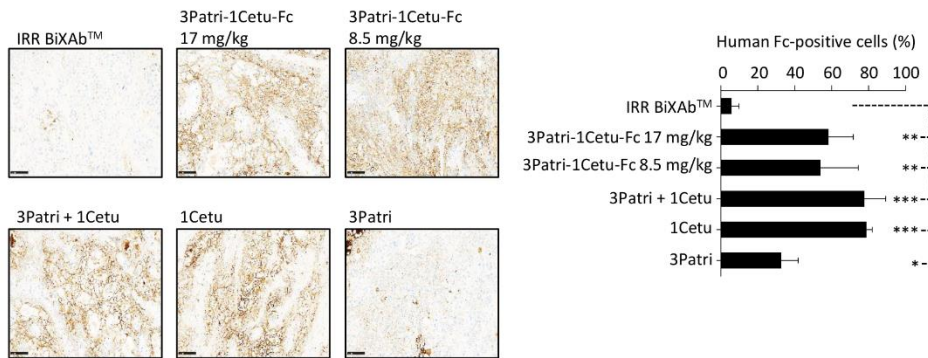


Figure 7. *In vivo* effects of the best-in-class BixAb™ 3Patri-1Cetu-Fc versus 2MAbs and 1MAbs. Tumor growth (left panel) and survival (middle panel) of mice xenografted with Sw1990 and PDX P2846 PDAC cells treated with the indicated antibodies (n=10 mice/group). The percentage of tumor growth inhibition (TGI), and the 50% survival benefit (days) are indicated in the right panel. The BixAb™ 3Patri-1Cetu-Fc was used at Fab equimolarity (8.5 mg/kg) or Fc equimolarity (17 mg/kg).

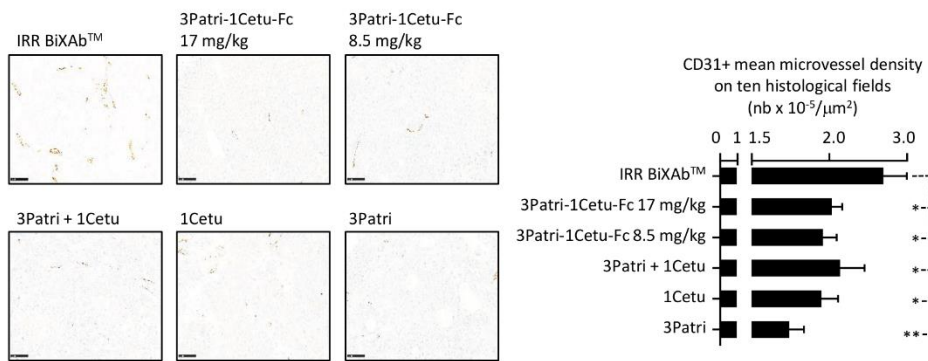
1
2

Fig.8

A



B



C

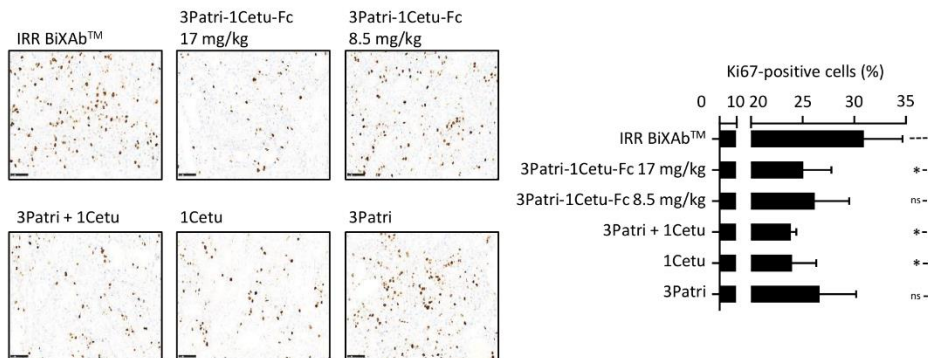
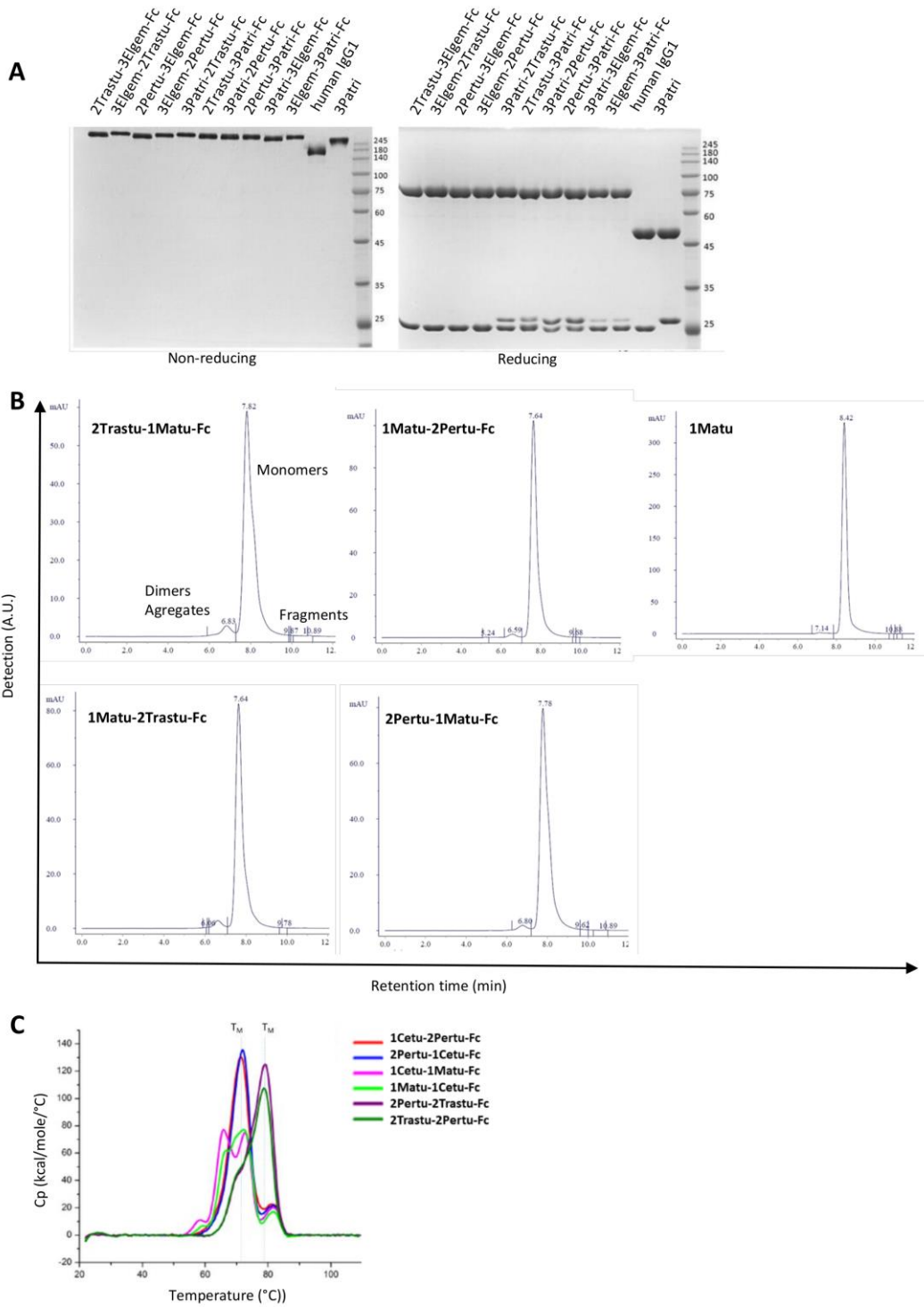


Figure 8. Characterization of 3Patri-1Cetu-Fc tumor penetration, and its effects on tumor angiogenesis and proliferation in mice xenografted with Sw1990 cells. (A) Immunohistochemistry analysis of the penetration of the BiXAb™ 3Patri-1Cetu-Fc, the 2MAbs 3Patri+1Cetu, and 3Patri and 1Cetu in tumor xenograft sections (x20 magnification; left panels). Antibodies were detected with a peroxidase-conjugated anti-human Fc. Human Fc-positive cells (right panel) were quantified in the whole tumor section using the QuPath software. Immunohistochemistry analysis (x20 magnification; left panel) of CD31 angiogenesis (B) and Ki67 proliferation (C) in Sw1990 cell xenografts. CD31⁺ microvessel density was estimated as the mean value in ten histological fields using the Image J software. The percentage of Ki-67⁺ cells in tumors was quantified in the whole tumor section using the QuPath software. IRR BiXAb™, negative control BiXAb™. Data are the mean ± SEM (n=5 mice/group). P-values: p <0.05 (*), p <0.01 (**), p <0.001 (***), ns (not significant). Immunohistochemistry analysis of P2846 xenografts is in Supplementary Figure 6.

1

2

Fig.S1



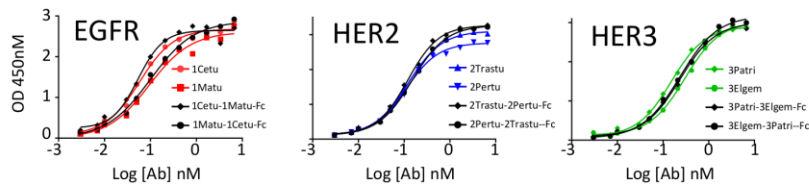
Supplementary Figure 1. Biochemical characterization of the 30 BiXAb™. (A) SDS-PAGE analysis of the indicated BiXAb™. (B) Size-exclusion chromatography of the BiXAb™ 2Trastu-1Matu-Fc, 1Matu-2Pertu-Fc, 1Matu-2Trastu-Fc, and 2Pertu-1Matu-Fc and of the parental antibody 1Matu. (C) Differential scanning calorimetry of the BiXAb™ 1Cetu-2Pertu-Fc, 2Pertu-1Cetu-Fc, 1Cetu-1Matu-Fc, 1Matu-1Cetu-Fc, 2Pertu-2Trastu-Fc, and 2Trastu-2Pertu-Fc.

1

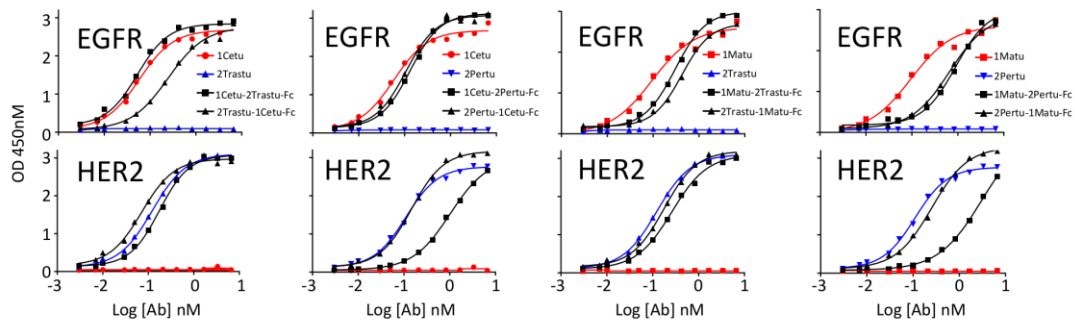
2

A Anti-homodimer BiXAb™

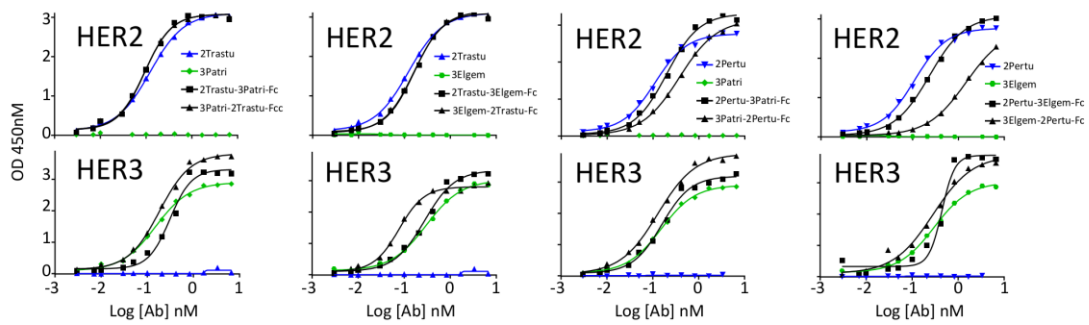
Fig.S2



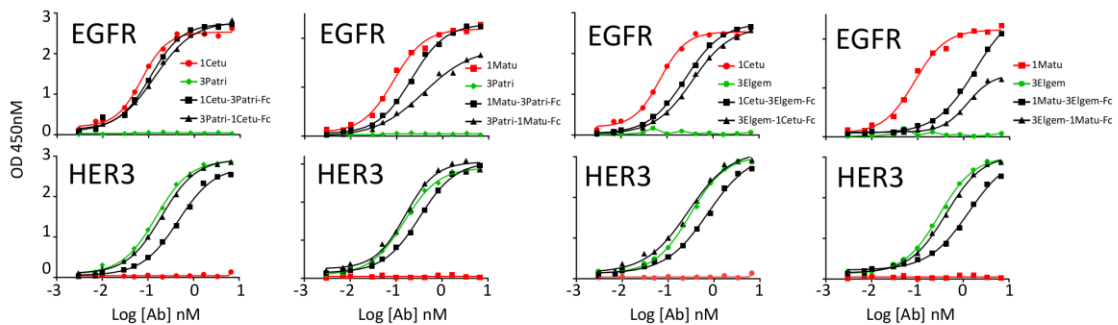
B Anti-heterodimer EGFR/HER2 BiXAb™



C Anti-heterodimer HER2/HER3 BiXAb™



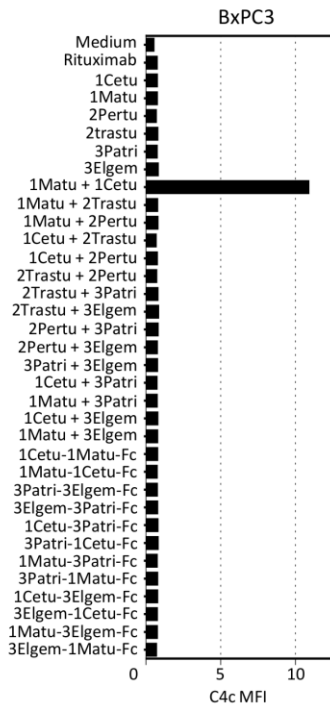
D Anti-heterodimer EGFR/HER3 BiXAb™



Supplementary Figure 2. ELISA to test the monospecific binding of (A) anti-homodimer BiXAb™, (B) anti-EGFR/HER2 BiXAb™, (C) anti-HER2/HER3 BiXAb™ and (D) anti-EGFR/HER3 BiXAb™ to immobilized ErbB receptors. ErbB monomer-specific antibodies were used as positive controls.

1
2

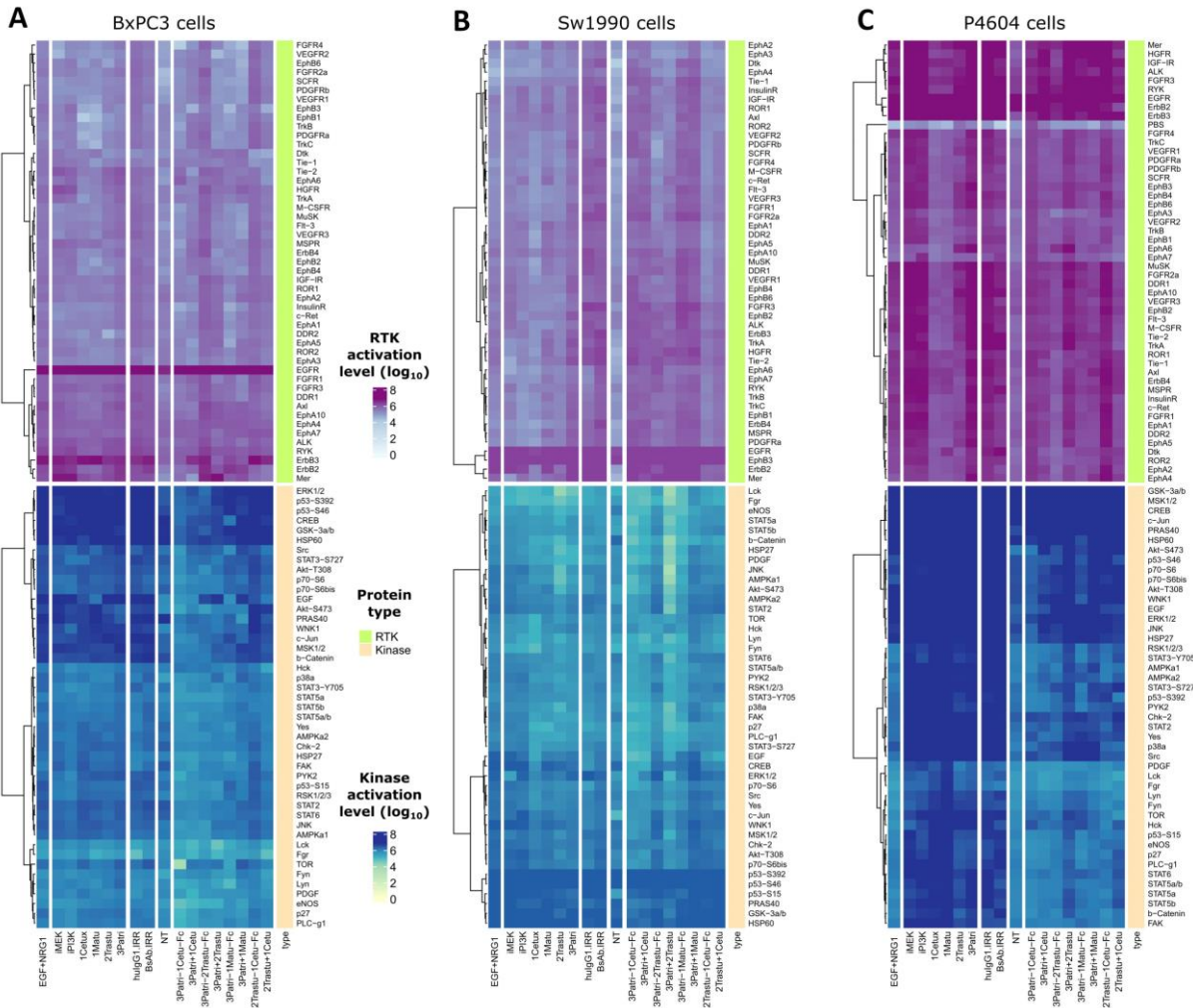
Fig.S3



Supplementary Figure 3. Screening of the 30 ErbB-specific BiXAb™. Initiation of complement-dependent cytotoxicity by BiXAb™ through C4c activation. BxPC3 cells were incubated with BiXAb™ for 30 min in the presence of 1% human serum. C4c deposition was analyzed by flow cytometry using an anti-C4c antibody.

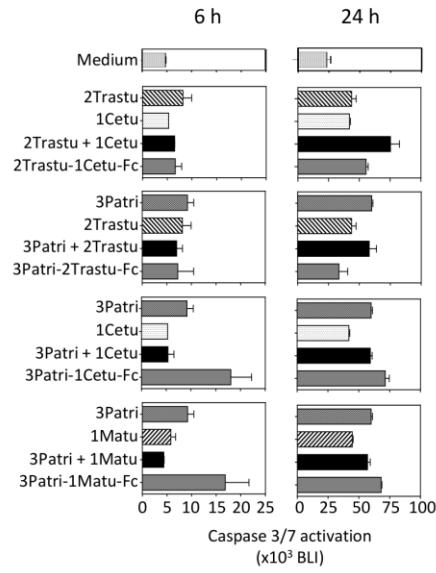
1

2



1
2

Fig.S5

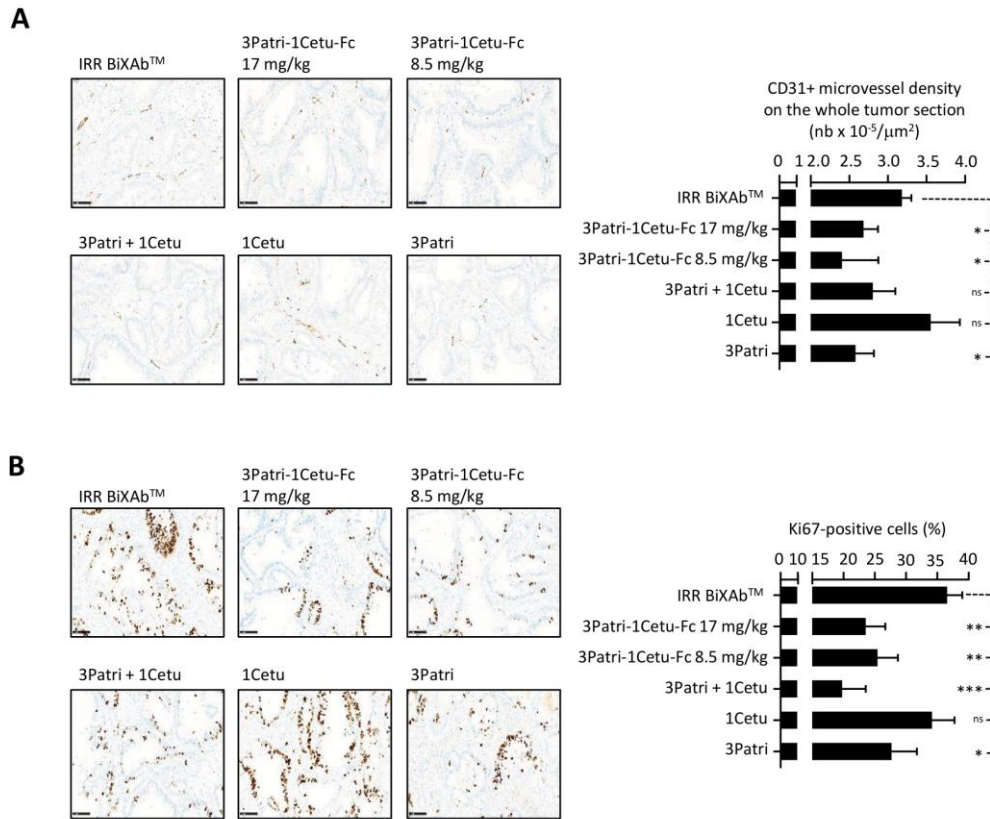


Supplementary Figure 5. Comparison of the four pre-selected ErbB-specific BiXAb™ vs 2MAbs and 1MAbs. Induction of caspase 3/7 activation: BxPC3 cells were incubated with antibodies for 6 h or 24 h. After cell lysis and addition of a luminogenic caspase 3/7 substrate, signal intensity was measured with a Pherastar reader at 490 nm. Data are the mean ± SEM of three experiments.

1

2

Fig.S6

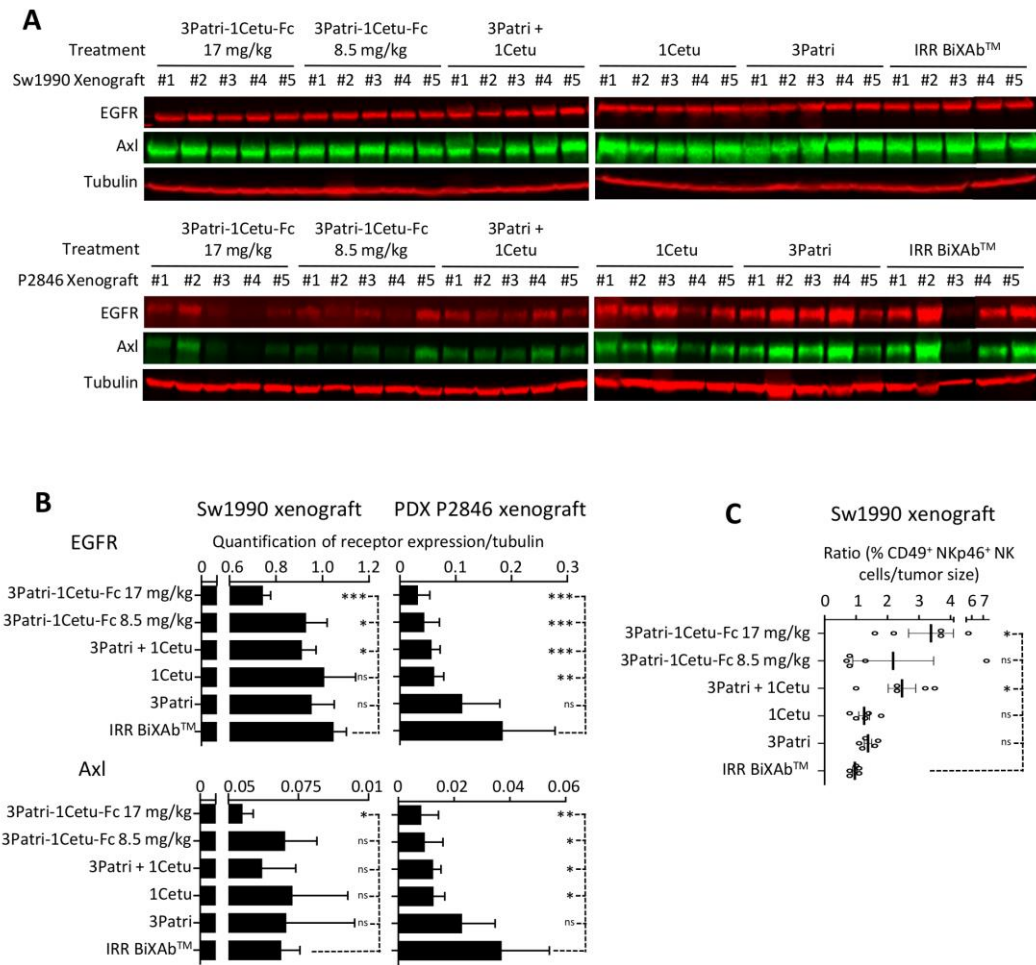


Supplementary Figure 6. *In vivo* effects of the lead BiXAb™ candidate 3Patri-1Cetu-Fc vs 2MAbs and 1MAbs in P2846 xenografted mice. Immunohistochemistry analysis (x20 magnification; left panels) of CD31 expression (angiogenesis) (A) and Ki67 (cell proliferation) (B) in P2846 xenografts from mice treated with the indicated antibodies. CD31+ microvessel density (MVD) was estimated as the mean value from ten histological fields using Image J. The percentage of Ki-67+ cells in tumors was quantified in the whole tumor section using the Qupath software. IRR BiXAb™ is a control BiXAb™ targeting CD19 and CD3. Data are the mean ± SEM (5 mice/group). P-values: p <0.05 (*), p <0.01 (**), p <0.001 (***), ns (not significant).

1

2

Fig.S7



Supplementary Figure 7. Receptor expression and NK cell immunophenotyping in 3Patri-1Cetu-Fc-treated Sw1990 cell and P2846 xenografts. **(A)** EGFR and AXL expression analysis by western blotting. Receptor expression in tumor xenografts from mice treated with 3Patri-1Cetu-Fc (17 mg/kg), 3Patri-1Cetu-Fc (8.5 mg/kg), 3Patri + 1Cetu, 1Cetu and 3Patri-1 was visualized using the LI-COR Odyssey imaging system. Tubulin was used as loading control. Each experiment was performed using samples from five xenografted mice. IRR BiXAb™, negative control. **(B)** Quantification of EGFR (top panels) and Axl (bottom panels) expression using the LI-COR Odyssey imaging system. Expression was normalized to tubulin. **(C)** NK cell immunophenotyping by flow cytometry. Dissociated cells were labeled with human CD49-, Nkp46-, IFN γ - and CD107-specific antibodies. Each experiment was performed using five Sw1990 cell or P2846 xenografts, except for the phosphokinome profiling (two Sw1990 cell or P2846 xenografts). IRR BiXAb™, negative control. Data are the mean \pm SEM. P-values: $p < 0.05$ (*), $p < 0.01$ (**), $p < 0.001$ (***), ns (not significant).

1
2
3