



HAL
open science

Dynamics of hippocampus and orbitofrontal cortex activity during arousing reactions from sleep: An intracranial electroencephalographic study

Perrine Ruby, Mickael Eskinazi, Romain Bouet, Sylvain Rheims, Laure Peter-Derex

► **To cite this version:**

Perrine Ruby, Mickael Eskinazi, Romain Bouet, Sylvain Rheims, Laure Peter-Derex. Dynamics of hippocampus and orbitofrontal cortex activity during arousing reactions from sleep: An intracranial electroencephalographic study. *Human Brain Mapping*, 2021, 42 (16), pp.5188-5203. 10.1002/hbm.25609 . hal-04098014

HAL Id: hal-04098014

<https://hal.science/hal-04098014>

Submitted on 15 May 2023

HAL is a multi-disciplinary open access archive for the deposit and dissemination of scientific research documents, whether they are published or not. The documents may come from teaching and research institutions in France or abroad, or from public or private research centers.

L'archive ouverte pluridisciplinaire **HAL**, est destinée au dépôt et à la diffusion de documents scientifiques de niveau recherche, publiés ou non, émanant des établissements d'enseignement et de recherche français ou étrangers, des laboratoires publics ou privés.

1
2
3 **Dynamics of hippocampus and orbitofrontal cortex activity during arousing reactions**
4
5 **from sleep : an intracranial EEG study**
6
7
8
9

10 ***Running title* Dynamics of awakening in the hippocampus**
11
12
13

14 Perrine Ruby, PhD ¹, Mickael Eskinazi, MSc¹, Romain Bouet, PhD², Sylvain Rheims, MD,
15
16 PhD^{3,4,5}, Laure Peter-Derex, MD, PhD^{1,3,6,#}
17
18
19

- 20
21
22 1. Lyon Neuroscience Research Center; CNRS UMR 5292; INSERM U1028 - PAM team,
23
24 Lyon, F-69000, France
25
26 2. Lyon Neuroscience Research Center; CNRS UMR 5292; INSERM U1028 - DYCOG team,
27
28 Lyon, F-69000, France
29
30 3. Lyon 1 University, Lyon, France.
31
32
33 4. Department of Functional Neurology and Epileptology, Hospices Civils de Lyon, University
34
35 of Lyon, France
36
37 5. Lyon Neuroscience Research Center; CNRS UMR 5292; INSERM U1028 - TIGER team,
38
39 Lyon, F-69000, France
40
41 6. Center for Sleep Medicine and Respiratory Diseases, Lyon University Hospital, Lyon, France
42
43
44

45 # Corresponding Author:

46
47 Laure Peter-Derex

48
49
50 Center for Sleep Medicine and Respiratory Diseases, Croix-Rousse Hospital, 103 Grande Rue
51
52 de la Croix-Rousse, 69004 Lyon, France. Tel (33) 4 72 07 17 69 Fax (33) 4 72 07 28 08
53

54 laure.peter-derex@chu-lyon.fr
55
56
57
58
59
60

1
2
3 **Conflict of interest disclosure :**
4

- 5 - Financial interests: none
6
7 - Non-financial interests: none
8
9

10
11
12
13 **Funding Statement**
14

15 No funding was received for this study
16
17

18
19
20 **Data Availability Statement**
21

22 The data that support the findings of this study are available from the corresponding author
23 upon reasonable request.
24
25

26
27
28
29 **Ethics approval statement and patient consent statement**
30

31 The procedure was approved by the national Ethics Committee (Comité de Protection des
32 Personnes CPP 09-CHUG-12, no 0907).
33

34 Patients were fully informed and gave written informed consent for the use of intra-cerebral
35 recordings for research purposes.
36
37
38
39
40
41
42
43
44

45 **Contributions of the authors:**
46

47 Perrine Ruby, Romain Bouet and Laure Peter-Derex: research design, data analysis, writing-
48 editing.
49

50 Mickël Eskinazi: data analysis, writing-editing.
51

52 Sylvain Rheims: data collection, writing-editing
53
54
55
56
57
58
59
60

Abstract

Sleep is punctuated by transient elevations of vigilance level called arousals or awakenings depending on their durations. Understanding the dynamics of brain activity modifications during these transitional phases could help to better understand the changes in cognitive functions according to vigilance states. In this study, we investigated the activity of memory-related areas (hippocampus and orbitofrontal cortex) during short (3 s to 2 min) arousing reactions detected from thalamic activity, using intracranial recordings in four drug-resistant epilepsy patients. The average power of the signal between 0.5 and 128 Hz was compared across four time windows: 10 s of preceding sleep, the first part and the end of the arousal/awakening, and 10 s of wakefulness. We observed that (1) in most frequency bands, the spectral power during hippocampal arousal/awakenings is intermediate between wakefulness and sleep whereas frontal cortex shows an early increase in low and fast activities during non-rapid-eye-movement (NREM) sleep arousals/awakenings; (2) this pattern depends on the preceding sleep stage with fewer modifications for REM than for non-REM sleep arousal/awakenings, potentially reflecting the EEG similarities between REM sleep and wakefulness; (3) a greater activation at the arousing reaction onset in the prefrontal cortex predicts longer arousals/awakenings. Our findings suggest that hippocampus and prefrontal arousals/awakenings are progressive phenomena modulated by sleep stage, and, in the neocortex, by the intensity of the early activation. This pattern of activity could underlie the link between sleep stage, arousal/awakening duration and restoration of memory abilities including dream recall.

Key words

Arousal; Hippocampus; Frontal lobe; Intra-cranial electroencephalography; Sleep; wakefulness; Dream; Humans

Introduction

The vanishing of conscious executive and perceptive abilities (Bastuji & Garcia-Larrea, 1999) as well as of explicit encoding of information into memory (Ruch & Henke, 2020) is a central component of the changes in cognitive functioning at the passing from wake to sleep state. Its cerebral correlates are not yet fully understood, nor are those associated with the restoration of these abilities at awakening. Transient periods of activation such as arousals (ASDA, 1992) and short awakenings provide a useful model to get insight about how the brain raises its level of alertness. Notably, arousals (lasting 3 to 15 seconds) are usually not associated with a conscious perception nor are they encoded in memory, whereas awakenings, lasting longer, may be consciously perceived, encoded in long-term memory, and reported by the sleeper in the morning (Campbell & Webb, 1981; Koulack & Goodenough, 1976). During these short time windows (from 3 seconds to a few minutes) the changes in brain activity would allow the recovery of consciousness and/or the ability to encode the content of the mind (may it be the dream content, the trigger of the awakening, or the awakening itself) in long-term memory (Koulack & Goodenough, 1976). Several experimental results suggest that a minimum of about 1-2 minutes of wakefulness is required for the sleeper to recover consciousness or memory encoding abilities at awakening (Campbell & Webb, 1981; Eichenlaub, Bertrand, Morlet, & Ruby, 2014; Raphael Vallat et al., 2017).

In the search for a better understanding of the changes in memory processes according to vigilance state, the hippocampus seems to be the first region of the brain to be investigated. This structure is indeed involved in memory processes during wakefulness, but also during sleep through its implication in sleep-related memory consolidation phenomena (Albouy et al., 2008; Squire & Zola-Morgan, 1991; Walker & Stickgold, 2004). The different aspects of memory underpinned by the hippocampus, i.e. encoding, consolidation and retrieval, are thought to be theoretically at least partially exclusive, and associated with distinct

1
2
3 electrophysiological patterns of activity (Axmacher, Elger, & Fell, 2008; Douchamps,
4 Jeewajee, Blundell, Burgess, & Lever, 2013). In agreement with these theories, several results
5 suggest that the hippocampus might be unable to encode a new information into memory during
6 sleep, although simple items presented during sleep may lead to memory traces (Aarons, 1976;
7
8 Andrillon, Pressnitzer, Leger, & Kouider, 2017; Mizuseki & Miyawaki, 2017; Suzuki, 2006).
9
10 Thus, the investigation of the dynamic changes of the hippocampus, and of related areas such
11 as the prefrontal cortex, activity during arousals and intra-sleep awakenings seems to be
12 relevant to improve our understanding of how memory encoding/retrieval is restored upon
13 awakening.
14
15

16
17 However, the electrophysiological investigation of hippocampal activity during sleep in human
18 must overcome two major difficulties. The first is related to the fact that only deep stereo-
19 electro-encephalographic recordings (S-EEG) allow access to the hippocampus which cannot
20 be explored with scalp EEG. The second difficulty is that S-EEG recordings are performed as
21 part of a pre-surgical evaluation in drug-resistant epilepsy patients whose hippocampus is often
22 involved in epileptic activity, especially during non-rapid-eye-movement (NREM) sleep
23 (Lambert et al., 2018). However, intracranial recording of apparently normal hippocampus is
24 sometimes required during pre-surgical evaluation, in particular to exclude bi-temporal
25 epilepsy, leading the unique opportunity of studying healthy hippocampal activity in human.
26
27 Thanks to a large intracranial EEG recordings database (Epilepsy Unit of Lyon University
28 Hospital), we were able to identify four patients presenting both a strictly normal hippocampal
29 activity during wakefulness and sleep and a recording of the thalamic activity enabling precise
30 scoring of vigilance stages and arousals (Michel Magnin, Bastuji, Garcia-Larrea, & Mauguiere,
31 2004; L. Peter-Derex, Magnin, & Bastuji, 2015). Prefrontal (orbitofrontal) cortex was also
32 explored in all of them, allowing to investigate neocortical activity.
33
34
35
36
37
38
39
40
41
42
43
44
45
46
47
48
49
50
51
52
53
54
55
56
57
58
59
60

1
2
3 Previously, the analysis of S-EEG recordings from several neocortical areas allowed us to
4 identify a high heterogeneity of brain activity during the first 3 seconds of arousals, which
5 depended on various factors such as the on-going sleep stage at the time of the arousal, the
6 stimulus which had triggered arousal, homeostatic factors and overall the brain area considered
7 (L. Peter-Derex et al., 2015). In the present study, we aimed to explore more specifically the
8 hippocampus and to focus not only on the first seconds of the arousal but also on several time
9 windows at the beginning, in the middle and at the end of both arousals and short awakenings.
10 These analyses allowed us to characterize the dynamics of hippocampal and neocortical activity
11 in the first tens of seconds of wakefulness after an awakening from sleep. We investigated the
12 hippocampus and the prefrontal cortex activity during NREM and REM sleep thalamic arousal
13 reactions, and compared this activity with that of wakefulness, NREM, and REM sleep in order
14 to assess (i) the dynamics of restoration of the hippocampus typical wake activity, which is
15 supposed to be associated with the restoration of its memory functions, as compared to
16 neocortex activity during arousals (ii) if the modification of hippocampus activity during
17 arousal/awakenings depends on the preceding sleep stage as can be expected from our previous
18 results (L. Peter-Derex et al., 2015), which may suggest functional differences between NREM
19 and REM sleep awakenings (iii) if hippocampal and neocortical activity are modulated by the
20 duration of the arousing reaction, with greater activation during long as compared to short
21 events.
22
23
24
25
26
27
28
29
30
31
32
33
34
35
36
37
38
39
40
41
42
43
44
45
46
47
48
49

50 **Materials and Methods**

51 *Patients*

52 Four patients (3 men and 1 woman, mean age 33 years, range 19-45 years) suffering from focal
53 refractory temporal lobe epilepsy were included in this study (**Table 1**). To delineate the extent
54 of the epileptogenic zone and plan a tailored surgical treatment, depth EEG electrodes were
55
56
57
58
59
60

1
2
3 implanted according to the stereotactic technique of Talairach and Bancaud (Bancaud &
4 Talairach, 1973; Guenot et al., 2001). The choice of cortical anatomic targets was guided by
5 data from non-invasive investigations (clinical history, video-scalp-EEG monitoring,
6 morphologic MRI, [18F]-fluorodeoxyglucose position emission tomography). Three of the four
7 patients underwent bitemporal exploration in order to rule out bitemporal seizures. The
8 thalamus, and more specifically the medial pulvinar nucleus (PuM), was a target of stereotactic
9 implantation because it might be an important relay in the propagation of epileptic discharges,
10 given its reciprocal connections with temporal cortical areas (Rosenberg et al., 2006).
11 Explorations of temporal neocortical areas and PuM was possible using a single multi-contact
12 electrode, so that thalamic exploration did not increase the risk of the procedure by requiring
13 an additional electrode track specifically devoted to the PuM activity recording. Anti-seizure
14 drugs were tapered down in order to increase the occurrence probability of spontaneous
15 seizures. In agreement with the French legislation relative to invasive investigations with a
16 direct individual benefit, patients were fully informed about electrode implantation and
17 stereotactic EEG recordings. They gave written informed consent for the use of recordings for
18 research purposes. The procedure was approved by the national Ethics Committee (Comité de
19 Protection des Personnes CPP 09-CHUG-12, no 0907).

Electrode implantation and anatomical localization of recording sites

20
21
22
23
24
25
26
27
28
29
30
31
32
33
34
35
36
37
38
39
40
41
42
43
44
45
46
47
48
49
50
51
52
53
54
55
56
57
58
59
60
The electrode implantation procedure was carried out using multiple contact electrodes introduced into the brain perpendicular to the midsagittal plane with a stereotactic frame. Each platinum-iridium electrode had a diameter of 0.8 mm, and contained 5 to 15 recording contacts (2 mm long, spaced by 1.5 mm; Dixi®, Besançon, France). The stereotactic implantation procedure was derived from the one first described by Talairach and Bancaud (Bancaud & Talairach, 1973) and is detailed in Ostrowsky et al. (Ostrowsky et al., 2002). Anatomical localization of the cortical electrodes contacts was counterchecked using post-implantation

1
2
3 MRI. We focused our analyses on electrodes leads located inside the hippocampus and in the
4 orbitofrontal cortex which was explored in all patients (ipsilateral to the hippocampus selected
5 for our study in 3 patients). In each patient, stereotactic coordinates electrode contacts were
6 reported within the anatomical model of normal brain proposed by the McConnell Brain
7 Imaging Center of the Montréal Neurological Institute (MNI), McGill University
8 (<http://www.bic.mni.mcgill.ca:brainweb/>). Superimposition of cortical contacts on the MNI
9 brain template was performed using a MATLAB routine (**Figure 1**). The placement of the
10 contacts within the thalamus was assessed using Morel's atlas of the human thalamus (Morel,
11 Magnin, & Jeanmonod, 1997). Thalamic contacts were in the PuM in all patients but one. In
12 patient 2, the electrode was more anterior and reached the lateral posterior and ventral lateral
13 posterior nuclei (**Figure 1**).

24 *Data acquisition*

25 Night sleep recordings under stereo-EEG (S-EEG) video monitoring were conducted in the
26 patient's own room at least 5 days after electrode implantation. S-EEG signals were obtained
27 using both referential and bipolar montages with Micromed® software (Treviso, Italy)
28 (sampling frequency: 256 Hz; band pass filter: 0.53-128 Hz; 32dB/octave). The reference
29 electrode was chosen for each patient on an implanted contact located in the skull. Blinks and
30 saccades were recorded with two electro-oculograms (EOG) electrodes placed on the supero-
31 and infero-lateral right canthus. EOG, electrocardiogram (EKG) and Video were recorded
32 continuously during the night.

33 *Sleep scoring and Intra Sleep Awakening Reaction (ISAR) detection*

34 Sleep stages were visually scored using 30 s epochs by one of the authors (L.P-D) trained in
35 scoring intra-cerebral sleep, using AASM criteria adapted to intra-cerebral recordings and
36 thalamic activity especially for REM sleep (Berry et al., 2017; Michel Magnin et al., 2004).
37 Intra Sleep Awakening Reaction (ISAR) were defined as an abrupt EEG frequency shift which
38
39
40
41
42
43
44
45
46
47
48
49
50
51
52
53
54
55
56
57
58
59
60

1
2
3 may include theta, alpha, and/or frequency greater than 16 Hz except spindles, following 10 s
4
5 of stable sleep, lasting 3 to 15 s for arousals according to the ASDA standard definition and
6
7 more than 15 sec for awakenings, and ending with sleep (ASDA, 1992). We investigated
8
9 awakenings up to 2 minutes long since this time duration was pointed out in previous work as
10
11 being related to the restoration of metacognitive abilities such as awareness or explicit memory
12
13 recall (Campbell & Webb, 1981; J.-B. Eichenlaub et al., 2014). ISAR visual detection
14
15 (performed by M.E. and countercheck by L.P-D) was based on thalamic activity, as we had
16
17 previously shown that the pattern of thalamic activation during arousals was easily detectable
18
19 and highly reproducible as it manifests as an abrupt shift to high-frequency activity (L. Peter-
20
21 Derex et al., 2015). For each arousal, onset and end were visually marked. As medial pulvinar
22
23 nucleus is connected on the one hand to the reticular thalamus and to brainstem nuclei which
24
25 belong to the ascending reticular activation system and on the other hand to limbic mesial
26
27 temporal structures, the choice of this structure was particularly relevant to explore arousing
28
29 reactions although we had already observed that clear arousing reactions could be also seen in
30
31 other thalamic nuclei such as the lateral posterior nuclei (Benarroch, 2015; L. Peter-Derex et
32
33 al., 2015). In one patient (N°4), scalp EEG recording was also available, which allowed us to
34
35 quantify sensitivity and specificity of thalamus-based arousal detection as compared to scalp
36
37 EEG-based detection. S-EEG channel contacts selected for power analysis were located inside
38
39 the hippocampus and the orbitofrontal cortex. All contacts considered in the present work were
40
41 located outside the seizure onset zone and/or any structural brain lesion. In addition, all
42
43 recordings were systematically reviewed by a board-certified neurophysiologist (LPD) to
44
45 confirm that the EEG activity recorded in these contacts was free of epileptic interictal
46
47 abnormalities, whatever the sleep stage considered.
48
49
50
51
52
53
54
55
56
57

58 *Signal analyses*

59
60

Using a MATLAB® script S-EEG files were segmented into pieces including the whole ISAR and ten seconds of the preceding sleep. The spectral analysis of the SEEG signal of the hippocampus and of the orbitofrontal cortex was performed on bipolar derivation (adjacent contacts of the S-EEG electrode) with Morlet wavelet transform between 0.5 and 128 Hz (step = 1 sample; frequency resolution = 0.5 Hz; ω [width of the wavelet, determines the temporal and spectral resolution] = 7 Hz; σ [the length of the used wavelets in standard deviations of the implicit Gaussian kernel] = 3 sec).

Temporal windows of interest

- *First analysis*

This analysis was designed to assess the possible difference in the spectral content of the hippocampus signal between the 4 following time windows (**Figure 2A**). Such analysis entailed that the “bodies” of the ISAR time windows (see below) could be of different durations, but it allowed to assess a possible global evolution of the signal between the beginning and the end of the ISAR for the ISARs of all durations (i.e. ≥ 3 s).

Baseline-tw. This time window corresponded to the 10 seconds of sleep (N2 or REM) immediately preceding the ISAR (according to the ASDA definition (ASDA, 1992)).

Onset-tw. It was a 5s time window, starting 2s before and ending 3s after the onset of the thalamic arousal (T0). This choice resulted from 1) previous observation of early delta frequency increase in several cortical areas 1 to 2 s before thalamic activation and asynchrony between cortical areas during arousals (Nobili et al., 2011; L. Peter-Derex et al., 2015), 2) the ASDA rules stating that the minimal duration for an arousal is 3s (ASDA, 1992). This allowed us to make sure that we were able to investigate the very beginning of the arousal in every studied area and

1
2
3 that we did not include any early arousing activity in the baseline time window. As
4
5 a result, the baseline started -12 sec and ended -2 sec before the onset of the thalamic
6
7 arousal.
8
9

10 **Body-tw.** This time window started at T0+3s and ended at arousal offset. The
11
12 duration of this window was consequently variable between arousals/awakenings
13
14 reactions and its longest possible duration was set at 1 min 57s i.e starting at T0+3s
15
16 and ending at T0+2min. Its shortest duration was set at 2s as we wanted to study
17
18 frequencies over 0.5Hz.
19
20

21 **Wake-tw.** A period of ten seconds of daytime wakefulness was randomly chosen for
22
23 each patient among a 30 minutes period of quiet wakefulness selected during the
24
25 evening before the recorded night, at least 30 min away from sleep onset, while
26
27 patients were sitting in their bed, eyes open, watching TV. These non-overlapping
28
29 10 s segments were used to compare arousals with stabilized wakefulness (each
30
31 segment was used no more than one time), and were merged for that purpose to the
32
33 *Baseline-Onset-Body* segments.
34
35
36

37
38 - *Second analysis*
39

40 This analysis was designed to assess the possible difference in the spectral content
41
42 of the hippocampus signal in 5 seconds time windows at the beginning, the middle
43
44 and the end of the ISAR (**Figure 2B**). Such analysis enabled to have a more precise
45
46 idea of the evolution of the signal across time and to explore more specifically the
47
48 last seconds of the ISAR (before falling asleep again) but it entailed that such
49
50 analysis was only possible for the ISAR of 13s or longer.
51
52

53 * **Baseline-tw.** This time window corresponded to the 10s of sleep (N2 or REM)
54
55 immediately preceding the ISAR (according to the ASDA definition ASDA, 1992).
56
57
58
59
60

1
2
3 * **Onset-tw.** It was a 5s time window, starting 2s before and ending 3s after the onset
4 of the thalamic ISAR (T0).
5

6
7 * **Middle-tw.** This 5 sec time window was centered on the middle of the ISAR i.e.
8 at equal distance from T0 and the end of the ISAR.
9

10
11 * **End-tw.** This 5 sec time window started at the end of the ISAR minus 5s and ended
12 at the ISAR offset.
13
14
15

16 17 18 **Frequency bands of interest**

19
20 The mean spectral power of the signal during each time window was calculated for
21 each ISAR in the following frequency bands (FB): low-delta [0.5-1 Hz], delta [1.5-
22 3.5 Hz], theta [4-7.5 Hz], alpha [8-11 Hz], sigma [12-16 Hz], beta [17-40 Hz] and
23 gamma [60-128 Hz]. The choice of these frequency bands was supported by
24 previous works about neocortex and hippocampus activity during sleep and
25 wakefulness (B. Frauscher et al., 2018; von Ellenrieder et al., 2020). They notably
26 enable to investigate rhythms typical of sleep like slow activity (slow delta and
27 higher delta including the “rhythmic slow activity” described in the hippocampus
28 during REM and wakefulness) but also spindles and gamma oscillations (Bodizs et
29 al., 2001; Brazier, 1968; Cantero, Atienza, Madsen, & Stickgold, 2004; Birgit
30 Frauscher et al., 2015; Montplaisir, Leduc, Laverdiere, Walsh, & Saint-Hilaire,
31 1981; Moroni et al., 2007; Laure Peter-Derex, Comte, Manguiere, & Salin, 2012).
32
33
34
35
36
37
38
39
40
41
42
43
44
45
46
47

48 49 **Normalization**

50 A normalization of the signal was performed to ensure that the power in the different
51 frequency bands of interest, time windows and sleep stages could be compared
52 within and across subjects. For each segment and each frequency band, we extracted
53 the mean and standard deviation of the *wake* window. We used them to apply the
54 geometric Z-score along all the segments. The geometric mean was preferred to the
55
56
57
58
59
60

1
2
3 arithmetic mean because it is less sensitive to extreme values and better suited to the
4
5 distribution (normal log) of our data. Geometric Z-score was calculated in
6
7 MATLAB® using the following formula
8
9

$$z = \frac{\ln(xs) - \ln(\mu)}{\ln(\sigma)}$$

10
11
12
13
14
15 geometric mean: $\mu = \left[\prod_{i=1}^n xw_i \right]^{\frac{1}{n}}$
16

17
18 geometric standard deviation: $\sigma = e^{std(\ln(xw))}$
19

20
21 xs corresponds to each power value in the sleep and ISAR time windows
22

23
24 xw corresponds to each power value in the wake windows
25
26

27 Afterwards, average signal power during each time window of interest was extracted for each
28
29 patient, each sleep stage, and each frequency band of interest.
30

31 ***Statistical analyses***

32
33 Statistical analyses were conducted using R®. Our aim was to model spectral power (in several
34
35 frequency bands) of the hippocampus and the orbitofrontal cortex S-EEG signal between
36
37 different sleep stages (N2 and REM sleep), time windows (Baseline, Onset, Body and Wake or
38
39 Baseline, Onset, Midde, End, and Wake) and ISAR type (arousal and short awakenings) within
40
41 a subject. To take into account possible variability of power in the frequency bands of interest
42
43 and in the sleep stage, ISAR type and time window effects between subjects, we used a Linear
44
45 mixed-effects model (lme4 package, Linear Mixed Effects version 4; Bates et al., 2015). We
46
47 accounted for the heterogeneity of power values by defining them as effects with a random
48
49 intercepts and slopes, thus instructing the model to correct for any systematic differences
50
51 between these variability. To confirm the need for mixed, nested model, a likelihood ratio test,
52
53 Akaike information criterion (AIC) and Bayesian information criterion (BIC) were used to test
54
55
56
57
58
59
60

1
2
3 model fit before and after sequential addition of random effects. To optimize our model, we
4
5 checked the normality of the model residual.
6

7 We analyzed the influence of four possible fixed effects on power: (i) sleep stage (two levels:
8 N2 and REM sleep); (ii) frequency band (seven levels: [0.5-1]Hz, [1.5-3.5]Hz, [4-7.5]Hz, [8-
9 11]Hz, [11.5-16]Hz, [17-40]Hz and [60-128]Hz); (iii) time window (four or five levels:
10 Baseline, Onset, Body and Wake or Baseline, Onset, Midde, End, Wake) and (iiii) ISAR type
11 (two levels: arousal (3s to 15s) and short awakening (15s to 2min)). We ran a type III analysis
12 of variance. Wald chi-square tests were used (Car package, version 3.0-0; Fox and Weisberg,
13 2011) for fixed effects in linear mixed-effects models.
14

15 For post hoc tests we used the Lsmean package (Lsmean version 2.20-23; Searle et al., 1980).
16 For most of the post hoc tests, we contrasted signal power in each specific frequency band and
17 sleep stage in two conditions ($Win_2 - Win_1$ where Win_1 and Win_2 are two time windows). We
18 used a complex contrast to highlight the ISAR duration effect according to time window factor
19 for each sleep stage and frequency band $(Win_2 - Win_1)^{awakening} - (Win_2 - Win_1)^{arousals}$. We
20 computed the correlation between the intensity of the initial change in spectral power (contrast
21 onset – baseline) and the duration of the ISAR with a Pearson's correlation test. The significance
22 threshold was set $p < 0.05$ and we take the correlation of the model parameters into account.
23 Dealing with General Linear Hypothesis, we use the model error (from the variance-covariance
24 matrix of the main parameters of a fitted model). The random effect model that we used allowed
25 us to model power variability between different sleep stage, time windows and ISAR type
26 within a subject. The fixed effect represent the mean effect across all subjects after residual
27 variability was removed and takes the correlation of the model parameters into account.
28
29
30
31
32
33
34
35
36
37
38
39
40
41
42
43
44
45
46
47
48
49
50
51
52
53
54
55
56

57 Results

58
59
60

1
2
3 Clinical characteristics of the patients are described in **Table 1**. All patients suffered from
4 temporal lobe epilepsy. The hippocampus selected for the study was contralateral to the
5 epileptic hemisphere in 3 patients, homolateral but only late involved in the seizure propagation
6
7 in the remaining patient.
8
9

10 11 *Intra Sleep Awakening Reactions detection*

12 Six hundred and seventeen thalamic ISAR were selected during the four whole nights analyzed:
13
14 379 in N2, 38 in N3 and 200 in REM sleep (respectively, in patient 1: 121, 16 and 39; in patient
15
16 2: 105, 7 and 65; in patient 3: 30, 3 and 62 and in patient 4: 123, 12 and 34). Examples of
17
18 NREM and REM arousals observed in scalp EEG and S-EEG are presented in the
19
20 **supplementary Figure**. The low number of ISAR in N3 prevented us from performing
21
22 analyses in this stage, and no ISAR was selected for analysis in N1 because of the difficulty to
23
24 recognize this sleep stage in S-EEG recordings, especially given local aspects of sleep during
25
26 transition states with possible discrepancies between thalamic and cortical activity and between
27
28 cortical areas (M. Magnin et al., 2010). The following results therefore relate to N2 and REM
29
30 sleep ISAR. Examples of hippocampal EEG activity during ISAR selected upon thalamic
31
32 activity in N2 and REM sleep are presented in **Figure 3A**. In patient 4, availability of scalp
33
34 EEG recordings allowed us to quantify the sensitivity (99%) and the specificity (86%) of
35
36 thalamus-based detection of arousals as compared to scalp EEG-based detection. Most selected
37
38 ISAR lasted between 3 and 25 sec, with a median duration of 11.1 s (interquartile range 15.1 s)
39
40 and a mean \pm sd duration of 20.6 ± 25.5 s for N2 and REM ISAR together (median 10.7 s in
41
42 N2 and 12.5 s in REM). Time-frequency representations of ISAR according to their duration
43
44 are shown in **Figure 3B**.
45
46
47
48
49
50
51
52
53
54
55

56 *Hippocampus activity during thalamic Intra Sleep Awakening Reactions*

57
58
59
60

1
2
3 *Hippocampus signal during N2 (and to a lesser extent REM) ISAR differs from both*
4 *wakefulness and baseline sleep*
5
6

7 For this first analysis, 320 N2 ISAR (206 arousals, 114 short awakenings) and 157 REM ISAR
8 (85 arousals and 72 short awakenings), lasting more than 5s, were selected. Signal power in
9 each frequency bands of interest during wake and ISAR from N2 and REM sleep is presented
10 in **Figure 4A**. A significant interaction between frequency band, time window and sleep stage
11 was found ($\text{Chi}^2 = 168.6$; $p < 0.0001$).
12
13
14
15
16
17
18

19 Overall, spectral composition of EEG signal in the hippocampus during sleep, ISAR and
20 wakefulness was quite similar in REM sleep (except for low delta), whereas it differed in many
21 frequency bands, especially low delta, delta, sigma and gamma, in N2. Results of *Post hoc*
22 comparisons are depicted in **Figure 4A** and statistical data are detailed in **Supplementary**
23 **Table 1**). We found that, for N2 ISAR, signal power in low delta [0.5-1 Hz], delta [1.5-3.5 Hz],
24 and sigma [11.5-16 Hz] frequency bands was significantly lower during arousal reactions (onset
25 and body) than during preceding sleep (except for low delta, which did not significantly differed
26 from baseline), and remained significantly higher than during wakefulness. Gamma [60-128
27 Hz] power was higher during baseline N2 than during wakefulness and decreased significantly
28 at the end of the ISAR as compared to baseline, whereas no or few differences were observed
29 for theta [4-7.5 Hz], alpha [8-11 Hz] and beta [17-40 Hz] frequency bands, except for alpha
30 power which was lower during both sleep, onset-tw and body-tw than during wake, and beta
31 power which decreased in the second part of the ISAR (body-tw) as compared to baseline sleep
32 and wake. For REM ISAR, signal power in low delta [0.5-1 Hz] band remained significantly
33 higher during both baseline sleep, onset and body-tw than during wakefulness. In alpha, sigma
34 and beta bands, signal power was lower during both baseline sleep and, for beta, body-tw, as
35 compared to wakefulness whereas the very onset of the ISAR was similar to wakefulness. No
36
37
38
39
40
41
42
43
44
45
46
47
48
49
50
51
52
53
54
55
56
57
58
59
60

1
2
3 significant differences between the four temporal windows were observed for delta, theta, and
4
5 gamma bands.
6

7 *Dynamic of hippocampal activity along the ISAR, from sleep back to sleep*
8
9

10 In order to further explore intra-ISAR dynamics, we performed an analysis with 5 time windows
11 including the onset, the middle and the last part of arousing reactions. For this second analysis,
12 only 211 ISAR longer than 13s were selected: 16 N2 arousals, 114 N2 short awakenings, 9
13 REM arousals and 72 REM short awakenings. As previously, a significant interaction between
14 frequency band, time window and sleep stage was found ($\text{Chi}^2 = 107.4$; $p < 0.001$). Results of
15 *post hoc* comparisons are depicted **Figure 4B** and statistical data are detailed in
16 **Supplementary Table 2**). Overall, we observed, for N2 ISAR, a decrease in low delta signal
17 power from the onset to the middle part of the ISAR and a stagnation in the end-part was
18 observed, but power during this end-part remained significantly higher than during
19 wakefulness. For delta and sigma, signal power was lower than during sleep and higher than
20 during wakefulness for each intra-ISAR time window. For theta band, signal power remained
21 stable across temporal windows, and for alpha band it remained overall at lower values than
22 during wakefulness, without any evident dynamics within the ISAR. For beta band, only the
23 middle-tw exhibited a lower signal power than both baseline-tw and wake-tw. Finally, a
24 progressive decrease in signal power in gamma band was observed from the beginning to the
25 end of the ISAR but only baseline and wakefulness significantly differed, with higher gamma
26 power during sleep. For REM ISAR, signal power in low delta was higher during baseline sleep
27 and during each intra-ISAR time window than during wakefulness and even higher during
28 onset-tw than during baseline sleep and middle-tw. No difference between the five temporal
29 time windows was observed for delta, theta, and gamma bands, and few differences were
30 observed for alpha, sigma and beta bands with overall a stable intra-arousal profile.
31
32
33
34
35
36
37
38
39
40
41
42
43
44
45
46
47
48
49
50
51
52
53
54
55
56
57
58
59
60

Prefrontal cortex activity during thalamic Intra Sleep Awakening Reactions

Prefrontal signal during ISAR differs from both wakefulness and baseline sleep in N2 only

Like in the hippocampus, a significant interaction between frequency band, time window and sleep stage was found ($\text{Chi}^2 = 285.9$; $p < 0.0001$). Results of *post hoc* comparisons are depicted in **Figure 5A** and statistical data are detailed in **Supplementary Table 3**. For N2 ISAR, an early increase in signal power was observed between baseline sleep and ISAR onset, significant for delta but also for theta, sigma and gamma band. Then, a decrease in signal power in low delta, delta, sigma bands was found between the onset and the end of the arousal and between the end of the arousal and wakefulness. For all these frequency bands, power values were higher during baseline sleep than during wakefulness. No differences between time windows were observed for alpha and beta frequencies. For REM ISAR, no differences between time windows were observed, except for a slight increase in delta frequencies during the ISAR onset as compared to baseline sleep (ns, $p = 0.053$) and to the end of the arousal ($p = 0.017$).

Dynamic of frontal activity along the ISAR, from sleep back to sleep

A significant interaction between frequency band, time window and sleep stage was also found for the 5 time windows analysis ($\text{Chi}^2 = 179.4$; $p < 0.0001$). Results of *post hoc* comparisons are depicted **Figure 5B** and statistical data are detailed in **Supplementary Table 4**. This complementary analysis confirmed the profile described above, and added information about the very last part of the arousal in N2 ISAR. It showed that, for low delta and delta, whereas a progressive decrease in signal power between onset and middle time windows was found, no further decrease was observed for the last time window, with rather a non-significant re-increase (low delta) or a stagnation (delta) in power values. These values remained higher than during wakefulness. In contrast, for all higher frequency bands (theta to gamma), signal power during the last time window did not differ from wakefulness. For REM ISAR, no difference between the five time windows was observed.

1
2
3 ***ISAR duration depends on the intensity of the first seconds of the arousal reaction in the***
4 ***frontal cortex***
5
6

7
8 In order to compare the dynamics of EEG signal in the hippocampus and in the prefrontal cortex
9
10 between short (≤ 15 s i.e. arousal) and long (> 15 s) ISAR, we explored the interaction between
11
12 type of ISAR (arousal or short awakening), frequency band, sleep stage and time window. This
13
14 interaction was significant in the prefrontal cortex only ($\text{Chi}^2 = 40.0$; $p = 0.01$). Visual
15
16 examination of results presented in **Figure 6** prompted us to contrast more specifically the onset
17
18 time window with baseline sleep and with the body time window, as well as the body time
19
20 window with the wake time window. In N2, the early increase in low and fast frequencies at
21
22 the beginning of the ISAR was more intense for long than for short ISAR (delta, $p = 0.046$;
23
24 theta, $p = 0.0008$; sigma, $p < 0.0001$; gamma, $p < 0.0001$) and the decrease in signal power in
25
26 these frequency bands was also greater during the second part of long than short ISAR (low
27
28 delta, $p < 0.0001$; delta, $p < 0.0001$; sigma, $p < 0.0001$, gamma, $p = 0.0003$). Interestingly, the
29
30 difference between the last part of long ISAR and wake was lower than the difference between
31
32 the last part of short ISAR and wake in delta and sigma bands (low delta, $p = 0.0002$; delta, p
33
34 < 0.0001 ; sigma, $p = 0.0003$). In REM, long and short ISAR differed in delta and sigma band,
35
36 where the increase in signal power between baseline sleep and onset time window and the
37
38 decrease between onset and body time window were higher for long than for short events ($p =$
39
40 0.003 and $p = 0.001$ respectively for delta and $p = 0.011$ and $p = 0.023$ respectively for sigma).
41
42 A highly significant linear positive correlation between the intensity of the initial change in
43
44 spectral power and ISAR duration was found in N2 for theta and sigma bands ($r = 0.23$ 95% CI
45
46 $[0.12; 0.33]$, $p < 0.0001$ and $r = 0.24$ 95% CI $[0.13; 0.34]$, $p < 0.0001$ respectively).
47
48
49
50
51
52
53
54
55
56

57 **Discussion**
58
59
60

1
2
3 In the present study, using combined thalamic, hippocampal and neocortical deep recordings,
4 we provide for the first time a detailed analysis of the hippocampus and prefrontal cortex
5 activation dynamics during arousing reactions detected in the thalamus in human. We
6 demonstrate that (i) in most frequency bands, the spectral power of the signal during arousing
7 reactions is intermediate between wakefulness and sleep in the hippocampus whereas an early
8 increase in low and fast activities is observed in frontal cortex for N2 arousals/awakenings ; (ii)
9 the signal power evolves according to time reflecting a progressive rather than a clear-cut
10 phenomenon ; (iii) the EEG signal during the arousing reactions depends on the preceding sleep
11 stage with fewer modifications in REM than in N2 in hippocampus and prefrontal cortex,
12 potentially reflecting the similarities in the EEG signal between REM and wakefulness in these
13 two structures; (iv) The intra-ISAR dynamics in the prefrontal cortex is associated with the
14 arousal reaction duration, with greater activation at the very onset of longest versus shortest
15 ISAR.
16
17
18
19
20
21
22
23
24
25
26
27
28
29
30
31

32 *Awakening as a progressive and local process*

33 We found that EEG activity during N2 arousals and awakenings in the hippocampus and the
34 prefrontal cortex differs from both sleep and wakefulness in most frequency bands and that the
35 pattern of activation exhibits specificities associated to each anatomical structure. The study of
36 transitions between vigilance states in animals and humans, using electrophysiological and
37 intracranial studies, have brought strong arguments in favor of progressive rather than clear-cut
38 switches from one state to another, underpinned by both spatial (“local wake” or “local sleep”
39 in different areas) and temporal (mixed wake-like and sleep-like activity within the same
40 structure) heterogeneities (M. Magnin et al., 2010; Nobili et al., 2011; L. Peter-Derex et al.,
41 2015; Sarasso, Pigorini, et al., 2014; Vyazovskiy et al., 2014). With respect to sleep onset, an
42 asynchrony between cortical regions, between the cortex and the thalamus, and between the
43 cortex and the hippocampus has been reported (Caderas, Niedermeyer, Uematsu, Long, &
44
45
46
47
48
49
50
51
52
53
54
55
56
57
58
59
60

1
2
3 Nastalski, 1982; M. Magnin et al., 2010; Sarasso, Proserpio, et al., 2014). Imaging and EEG
4
5 studies in humans have suggested that awakening was also a progressive process associated
6
7 with the sequential re-activation of brain structures and the persistence of sleep slow
8
9 oscillations, all of these components underlying the phenomenon of sleep inertia (Balkin et al.,
10
11 2002; Marzano, Ferrara, Moroni, & De Gennaro, 2011; R. Vallat, Meunier, Nicolas, & Ruby,
12
13 2019). However, few S-EEG studies have specifically studied the sleep-to-wake transition
14
15 except in pathological situations such as parasomnia (Flamand et al., 2018; Terzaghi et al.,
16
17 2009). Regarding physiological awakening from NREM sleep, Magnin et al. did not report
18
19 thalamo-cortical nor intra-cortical asynchrony, but it is possible that the dimension of activation
20
21 (which was used to quantify signal complexity and to differentiate vigilance states) was not
22
23 suitable to explore brief events such as arousals and short awakenings (M. Magnin et al., 2010).
24
25 Local phenomena may however occur during arousing processes as Nobili et al. reported short-
26
27 lasting local activations during NREM sleep in the motor cortex (blockage of slow waves and
28
29 increase in alpha-beta frequencies) whereas other areas, especially the dorsolateral prefrontal
30
31 cortex, exhibited an increase in slow wave activity (Nobili et al., 2011). In a previous study on
32
33 arousals recorded in the thalamus and in the cortex, we also observed local arousals and found
34
35 that the level of “activation”, as assessed by the spectral composition of the signal, differed
36
37 between the arousals and wakefulness (L. Peter-Derex et al., 2015).
38
39
40
41
42
43

44
45 In the present study, we confirm the local specificities in arousals, including the particular
46
47 “mixed slow wave and fast frequencies” activity observed at the onset of the arousal in the
48
49 prefrontal neocortex only (L. Peter-Derex et al., 2015), and extend our observations to the
50
51 hippocampus, where short (< 2 min) arousing reactions exhibit some asynchrony with thalamus
52
53 arousals and are not associated with full recovery of wakefulness activity. This is particularly
54
55 the case for N2, as specific sleep oscillations such as slow oscillations and delta waves decrease
56
57 as a function of time during ISAR but do not reach wakefulness values. The progressive rather
58
59
60

1
2
3 than abrupt exit from sleep could be expected given the transitional nature of arousal. However,
4
5 we demonstrate in this study for the first time that this pattern (not entirely consistent with the
6
7 ASDA definition of an abrupt shift (ASDA, 1992)) is observed in structures whose
8
9 physiological activity is extremely rarely explored in humans. The fact that wakefulness activity
10
11 is not reestablished instantaneously in the hippocampus may be associated with the observation
12
13 that arousals and most short awakenings are not recalled at awakening (Baker, Maloney, &
14
15 Driver, 1999; Goodenough, Sapan, Cohen, Portnoff, & Shapiro, 1971; Lauderdale, Knutson,
16
17 Yan, Liu, & Rathouz, 2008; Winser, McBean, & Montgomery-Downs, 2013). These results
18
19 are also consistent with studies showing that long awakenings are more often recalled than
20
21 shorter ones (Campbell & Webb, 1981) and with others works showing that the duration of
22
23 intra-sleep awakenings is related to dream recall (J.-B. Eichenlaub et al., 2014; Raphael Vallat
24
25 et al., 2017)

30 ***Short awakenings as dynamic events***

31
32 The difference between wakefulness and ISAR in hippocampus and prefrontal cortex activity
33
34 may not only reflect an “inertia” effect, but also the fact that arousals and short awakenings are,
35
36 by definition, unstable, heterogeneous and transient processes: they reflect both sleep-to-wake
37
38 and wake-back-to-sleep phenomena. Indeed, we observed an intra-ISAR dynamics, as
39
40 demonstrated by the differences observed in several frequency bands between the onset, the
41
42 middle and/or the end of the arousing reaction. Interestingly, this dynamics differed between
43
44 frequency bands and between structures. For example, in frontal cortex, a strong decrease in
45
46 spectral power was observed in many frequency band (low and fast activities) between the onset
47
48 and the middle of N2 ISAR but the last part was marked by a stagnation (or even a non-
49
50 significant re-increase for low delta) in signal power. In hippocampus N2 ISAR, the arousing
51
52 reaction was associated with an early decrease in some specific sleep oscillations (delta and
53
54 sigma). In contrast, a decrease during the second part of the ISAR (body-tw for gamma and
55
56
57
58
59
60

1
2
3 beta power) was found in fast activities as compared to baseline whereas this decrease was not
4
5 observed at the arousal onset. This decrease in gamma power in the hippocampus might be due
6
7 to a decrease in ripples, which characterize the activity of the hippocampus during NREM and
8
9 are believed to play a key role in long term memory consolidation processes (Axmacher et al.,
10
11 2008; Cantero et al., 2004; Zsofia Clemens et al., 2007; Staresina et al., 2015). Such differences
12
13 in temporal dynamics between distinct oscillations within a single brain structure may be
14
15 associated with functional specificities of transitional stages. It can be hypothesized that the
16
17 functional impairment associated with sleep fragmentation is not only the consequence of a
18
19 decrease in the sleep time spent in different stages but also of an increased duration of these
20
21 transitional states where neither wakefulness nor sleep activity (nor stage-specific related
22
23 functions) are fully re-instored (Bonnet & Arand, 2003; Stepanski, Lamphere, Badia, Zorick,
24
25 & Roth, 1984).

30 *Sleep stage matters*

31
32 Regarding full awakening, sleep inertia has been reported to be more pronounced in N3 than in
33
34 REM sleep than in N2/N1 (Tassi & Muzet, 2000; R. Vallat et al., 2019). In the present study,
35
36 we also observed that the hippocampus and the prefrontal cortex activity during transitions
37
38 between sleep and wakefulness depends on the ongoing sleep stage. In particular, few
39
40 differences in S-EEG signal were observed for REM sleep ISAR between baseline sleep,
41
42 arousing reactions and full wakefulness. This could suggest that no arousing reaction occurred
43
44 in the hippocampus or in the frontal cortex at the time of thalamic arousals; however, the
45
46 observation of significant changes in some frequency bands (increase in low delta frequency at
47
48 the onset of the arousal in the hippocampus and decrease in delta between the first and the last
49
50 part of the arousal in the prefrontal cortex) indicates that the modification in thalamic activity
51
52 was associated with some subtle changes in hippocampo-frontal structures activity. This
53
54 findings echoes our previous work about cortical heterogeneity in arousing patterns, as we
55
56
57
58
59
60

1
2
3 observed very few changes in frontal area between baseline REM sleep and arousals whereas,
4
5 at the same time, obvious modifications (especially in alpha band) were found in posterior areas
6
7 (L. Peter-Derex et al., 2015). The fact that, unlike what was observed for NREM sleep arousals,
8
9 both prefrontal cortex and hippocampus activities during REM sleep arousals were not very
10
11 different from wake and REM sleep activity may be explained by the fact that the spectral
12
13 composition of the signal is more similar between REM and wakefulness than between NREM
14
15 and wakefulness. This finding is in line with previous works about the prefrontal and
16
17 hippocampus activity according to vigilance stages, explored with intracranial recordings
18
19 although, unlike in our study, no direct comparison between stages was reported (von
20
21 Ellenrieder et al., 2020). Specifically, a particular slow oscillation has been described during
22
23 both wakefulness and REM in the hippocampus, and referred as a “rhythmic slow activity”
24
25 (1.5-3 Hz) which may be the counterpart of the theta activity observed in rodents (Bodizs et al.,
26
27 2001; Brazier, 1968; Z. Clemens et al., 2009; Moroni et al., 2007; Watrous et al., 2013). This
28
29 delta activity has been associated with specific cognitive functions such as navigation and
30
31 memory formation (Brazier, 1968; Lega, Jacobs, & Kahana, 2012; Watrous et al., 2013).
32
33 Gamma oscillations are also observed in both REM and wakefulness (Mari, Zelman, Andrade-
34
35 Valenca, Dubeau, & Gotman, 2012). We found that only alpha to beta frequencies differed
36
37 significantly between REM and wakefulness, with higher spectral power during the latter state.
38
39 This proximity between REM sleep and wakefulness activity in the hippocampus, also found
40
41 in the prefrontal cortex, may facilitate the transition between these two stages in these
42
43 structures. This may contribute to the difference in dream recall between NREM and REM
44
45 awakenings (J. B. Eichenlaub et al., 2014; Nielsen, 2000; Stickgold, Malia, Fosse, Propper, &
46
47 Hobson, 2001) by allowing during arousals from REM sleep a faster reinstatement of encoding
48
49 functions thought to be impaired during sleep (Diekelmann & Born, 2010; Tononi & Cirelli,
50
51 2014).
52
53
54
55
56
57
58
59
60

Awakening duration depends on the very first seconds of the arousing reaction

Every studied ISAR ended with a come back to sleep. However, the time needed to reach sleep again differed between arousals and awakenings. While no clear difference between short and long ISAR could be seen in the hippocampus, the duration of the ISAR was associated with the intensity of the early arousing reaction in the prefrontal cortex and the strength of the decrease in slow and fast oscillations during the second part of the event, with longer events being associated with the restoration of an activity closer to wakefulness. This result may appear as paradoxical but it refers to the complex nature of arousal (P. Halasz, Terzano, Parrino, & Bodizs, 2004). The early delta increase observed during the first seconds of the arousal **may** correspond to a slow reactive grapho-element (K-complex or delta burst) which is mixed with high frequency activities (P. Halasz & Ujjaszsi, 1991; Latreille et al., 2020). As the arousal reaction evolves, delta power decrease and get closer to wakefulness values. At the same time, a decrease in sigma band, corresponding to spindles which are suppressed during arousals, is observed. Thus, the very beginning of the arousing reaction in the prefrontal cortex led to different trajectories back to sleep with a positive correlation between the intensity of this initial activation and the duration of the ISAR in N2. ISAR duration, reflecting the time needed to restore sleep, may be related to the relative balance between arousal and anti-arousal processes engaged from the very onset of the arousing reaction. Individual differences in brain reactivity to auditory stimuli during sleep, as assessed by the amplitude of cognitive evoked potentials, have been reported between high and low dream recallers: a higher reactivity would enable a longer awakening duration and thus allow for a greater brain “re-activation” necessary for encoding and consolidating dream content (Raphael Vallat et al., 2017).

Limitations

Several limitations should be kept in mind when interpreting the present findings. First, the results were obtained in patients with epilepsy taking anti-seizure drugs with more disrupted

1
2
3 sleep than healthy individuals as evidenced by the high number of ISAR detected in our study.
4
5 Although we applied very strict criteria for hippocampus and orbitofrontal channels selection,
6
7 we cannot definitely rule out the fact that the underlying epileptic condition may have
8
9 influenced arousing processes on a quantitative (arousal threshold) or qualitative (spectral
10
11 composition of the signal) way. However, all works about electrophysiological activity in the
12
13 hippocampus during wakefulness and sleep have used such a methodology as intracranial
14
15 recordings are obviously only performed for clinical purposes (Bodizs et al., 2001; Brazier,
16
17 1968; Moroni et al., 2007; Sarasso, Proserpio, et al., 2014). Moreover, our results are in line
18
19 with non-invasive scalp EEG works about sleep-wake transition, which demonstrated a
20
21 progressive restoration of wakefulness activity (Marzano et al., 2011; R. Vallat et al., 2019).
22
23 Last, our findings about wake and sleep activity in the hippocampus and the frontal cortex are
24
25 consistent with results reported by many other groups in patients taking different types of anti-
26
27 seizure drugs, which argues for the fact that main EEG features of vigilance states are robust
28
29 (Bodizs et al., 2001; Brazier, 1968; B. Frauscher et al., 2018; Moroni et al., 2007; von
30
31 Ellenrieder et al., 2020). Another limitation is the small number of patients, which is the
32
33 counterpart of our strict selection criteria: however, the high number of arousals/awakenings
34
35 allowed us to overcome this limitation. We also acknowledge that we investigated the
36
37 hippocampus activity during thalamic arousals without assumptions about the presence or not
38
39 of a concomitant detectable scalp EEG arousal (we provide nonetheless in one patient data and
40
41 figures which suggest a good correspondence between the thalamic and scalp EEG arousals).
42
43 As arousals have been shown to be local phenomena (Nobili et al., 2011; L. Peter-Derex et al.,
44
45 2015) it is not clear what is best, the use of scalp EEG or of S-EEG activity from selected
46
47 cortical brain area to detect arousals. There is currently no ideal brain structure to identify ISAR
48
49 or gold standard strictly and precisely defining arousals at the local and global level. However,
50
51 the particular connection of the medial pulvinar thalamus with subcortical, cortical and limbic
52
53
54
55
56
57
58
59
60

1
2
3 structures makes the thalamus a good candidate for a pertinent structure to detect arousal in the
4 context of hippocampus activity study (Benarroch, 2015; Gattass, Soares, & Lima, 2018).
5
6 Finally, the fact that this study was retrospective did not allow us to standardize arousals
7
8 regarding the trigger (all arousals were “spontaneous”, i.e. we do not know what internal or
9
10 external stimulation had triggered them) and to explore the cognitive correlates of our findings,
11
12 regarding memory of arousing reactions for example.
13
14
15

16 ***Conclusions***

17
18
19 As a conclusion, thanks to the unique opportunity of simultaneous recordings of the thalamus
20
21 and of healthy hippocampus and prefrontal cortex in humans, we found that awakening from
22
23 sleep in the hippocampus and orbitofrontal cortex is a progressive and dynamic process,
24
25 modulated by the stage of sleep and, in the frontal cortex, by the intensity of the initial arousing
26
27 response. Such findings may explain variability in dream recall, REM sleep-related and longer
28
29 awakenings allowing the hippocampus activity to get closer to wakefulness activity and thus to
30
31 recover encoding and consolidation functions. These results are in line with dream recall
32
33 theories regarding the key role of brain reactivity and awakening length in memory formation
34
35 (De Gennaro et al., 2010; J.-B. Eichenlaub et al., 2014; Ruby et al., 2013; Raphael Vallat et al.,
36
37 2017). Further studies will be necessary to confirm this hypothesis. Notably, the investigation
38
39 in the same study of the activity in memory-related brain areas, and of functional connectivity
40
41 between these areas, along with subjective perception and memory of arousals/awakenings and
42
43 of dreams would help to understand which particular activity is critical to these cognitive
44
45 processes.
46
47
48
49
50
51
52
53
54
55
56
57
58
59
60

References

- Aarons, L. (1976). Sleep-assisted instruction. *Psychol Bull*, 83(1), 1-40.
- Albouy, G., Sterpenich, V., Balteau, E., Vandewalle, G., Desseilles, M., Dang-Vu, T., . . .
Maquet, P. (2008). Both the hippocampus and striatum are involved in consolidation of
motor sequence memory. *Neuron*, 58(2), 261-272. doi:10.1016/j.neuron.2008.02.008
- Andrillon, T., Pressnitzer, D., Leger, D., & Kouider, S. (2017). Formation and suppression of
acoustic memories during human sleep. *Nature communications*, 8(1), 179.
doi:10.1038/s41467-017-00071-z
- ASDA. (1992). EEG arousals: scoring rules and examples: a preliminary report from the Sleep
Disorders Atlas Task Force of the American Sleep Disorders Association. *Sleep*, 15(2),
173-184.
- Axmacher, N., Elger, C. E., & Fell, J. (2008). Ripples in the medial temporal lobe are relevant
for human memory consolidation. *Brain : a journal of neurology*, 131(Pt 7), 1806-1817.
doi:10.1093/brain/awn103
- Baker, F. C., Maloney, S., & Driver, H. S. (1999). A comparison of subjective estimates of
sleep with objective polysomnographic data in healthy men and women. *Journal of
psychosomatic research*, 47(4), 335-341. doi:10.1016/s0022-3999(99)00017-3
- Balkin, T. J., Braun, A. R., Wesensten, N. J., Jeffries, K., Varga, M., Baldwin, P., . . .
Herscovitch, P. (2002). The process of awakening: a PET study of regional brain
activity patterns mediating the re-establishment of alertness and consciousness. *Brain :
a journal of neurology*, 125(Pt 10), 2308-2319. doi:10.1093/brain/awf228
- Bancaud, J., & Talairach, J. (1973). [Methodology of stereo EEG exploration and surgical
intervention in epilepsy]. *Revue d'oto-neuro-ophtalmologie*, 45(4), 315-328.

- 1
2
3 Bastuji, H., & Garcia-Larrea, L. (1999). Evoked potentials as a tool for the investigation of
4
5 human sleep. *Sleep medicine reviews*, 3(1), 23-45.
6
7
8 Benarroch, E. E. (2015). Pulvinar: associative role in cortical function and clinical correlations.
9
10 *Neurology*, 84(7), 738-747. doi:10.1212/WNL.0000000000001276
11
12
13 Berry, R. B., Brooks, R., Gamaldo, C. E., Harding, S. M., Lloyd, R., Marcus, C. L., & Vaughn,
14
15 B. V. (2017, 2017). The AASM Manual for the Scoring of Sleep and Associated Events:
16
17 Rules, Terminology and Technical Specifications, Version 2.4. www.aasmnet.org,
18
19 Darien, Illinois: American Academy of Sleep Medicine.
20
21
22 Bodizs, R., Kantor, S., Szabo, G., Szucs, A., Eross, L., & Halasz, P. (2001). Rhythmic
23
24 hippocampal slow oscillation characterizes REM sleep in humans. *Hippocampus*, 11(6),
25
26 747-753. doi:10.1002/hipo.1090
27
28
29 Bonnet, M. H., & Arand, D. L. (2003). Clinical effects of sleep fragmentation versus sleep
30
31 deprivation. *Sleep medicine reviews*, 7(4), 297-310.
32
33
34 Brazier, M. A. (1968). Studies of the EEG activity of limbic structures in man.
35
36 *Electroencephalography and clinical neurophysiology*, 25(4), 309-318.
37
38 doi:10.1016/0013-4694(68)90171-5
39
40
41 Caderas, M., Niedermeyer, E., Uematsu, S., Long, D. M., & Nastalski, J. (1982). Sleep spindles
42
43 recorded from deep cerebral structures in man. *Clinical EEG (electroencephalography)*,
44
45 13(4), 216-225. doi:10.1177/155005948201300402
46
47
48 Campbell, S. S., & Webb, W. B. (1981). The perception of wakefulness within sleep. *Sleep*,
49
50 4(2), 177-183.
51
52
53 Cantero, J. L., Atienza, M., Madsen, J. R., & Stickgold, R. (2004). Gamma EEG dynamics in
54
55 neocortex and hippocampus during human wakefulness and sleep. *Neuroimage*, 22(3),
56
57 1271-1280. doi:10.1016/j.neuroimage.2004.03.014
58
59
60

- 1
2
3 Clemens, Z., Molle, M., Eross, L., Barsi, P., Halasz, P., & Born, J. (2007). Temporal coupling
4 of parahippocampal ripples, sleep spindles and slow oscillations in humans. *Brain : a*
5 *journal of neurology*, *130*(Pt 11), 2868-2878. doi:10.1093/brain/awm146
6
7
8
9
10 Clemens, Z., Weiss, B., Szucs, A., Eross, L., Rasonyi, G., & Halasz, P. (2009). Phase coupling
11 between rhythmic slow activity and gamma characterizes mesiotemporal rapid-eye-
12 movement sleep in humans. *Neuroscience*, *163*(1), 388-396.
13 doi:10.1016/j.neuroscience.2009.06.044
14
15
16
17
18
19 De Gennaro, L., Marzano, C., Moroni, F., Curcio, G., Ferrara, M., & Cipolli, C. (2010).
20 Recovery sleep after sleep deprivation almost completely abolishes dream recall.
21 *Behavioural brain research*, *206*(2), 293-298. doi:10.1016/j.bbr.2009.09.030
22
23
24
25
26 Diekelmann, S., & Born, J. (2010). The memory function of sleep. *Nature reviews.*
27 *Neuroscience*, *11*(2), 114-126. doi:10.1038/nrn2762
28
29
30
31 Douchamps, V., Jeewajee, A., Blundell, P., Burgess, N., & Lever, C. (2013). Evidence for
32 encoding versus retrieval scheduling in the hippocampus by theta phase and
33 acetylcholine. *The Journal of neuroscience : the official journal of the Society for*
34 *Neuroscience*, *33*(20), 8689-8704. doi:10.1523/JNEUROSCI.4483-12.2013
35
36
37
38
39
40 Eichenlaub, J.-B., Bertrand, O., Morlet, D., & Ruby, P. (2014). Brain reactivity differentiates
41 subjects with high and low dream recall frequencies during both sleep and wakefulness.
42 *Cerebral cortex (New York, N.Y. : 1991)*, *24*(5), 1206-1215. doi:10.1093/cercor/bhs388
43
44
45
46
47 Eichenlaub, J. B., Nicolas, A., Daltrozzo, J., Redoute, J., Costes, N., & Ruby, P. (2014). Resting
48 brain activity varies with dream recall frequency between subjects.
49 *Neuropsychopharmacology*, *39*(7), 1594-1602. doi:10.1038/npp.2014.6
50
51
52
53
54 Flamand, M., Boudet, S., Lopes, R., Vignal, J.-P., Reyns, N., Charley-Monaca, C., . . . Szurhaj,
55 W. (2018). Confusional arousals during non-rapid eye movement sleep: evidence from
56 intracerebral recordings. *Sleep*, *41*(10). doi:10.1093/sleep/zsy139
57
58
59
60

- 1
2
3 Frauscher, B., Bernasconi, N., Caldairou, B., von Ellenrieder, N., Bernasconi, A., Gotman, J.,
4
5 & Dubeau, F. (2015). Interictal Hippocampal Spiking Influences the Occurrence of
6
7 Hippocampal Sleep Spindles. *Sleep*, 38(12), 1927-1933. doi:10.5665/sleep.5242
8
9
10 Frauscher, B., von Ellenrieder, N., Zelman, R., Dolezalova, I., Minotti, L., Olivier, A., . . .
11
12 Gotman, J. (2018). Atlas of the normal intracranial electroencephalogram:
13
14 neurophysiological awake activity in different cortical areas. *Brain : a journal of*
15
16 *neurology*, 141(4), 1130-1144. doi:10.1093/brain/awy035
17
18
19 Gattass, R., Soares, J. G. M., & Lima, B. (2018). Modulation of Pulvinar Neuronal Activity by
20
21 Arousal. *Adv Anat Embryol Cell Biol*, 225, 49-51. doi:10.1007/978-3-319-70046-5_10
22
23
24 Goodenough, D. R., Sapan, J., Cohen, H., Portnoff, G., & Shapiro, A. (1971). Some
25
26 experiments concerning the effects of sleep on memory. *Psychophysiology*, 8(6), 749-
27
28 762. doi:10.1111/j.1469-8986.1971.tb00512.x
29
30
31 Guenet, M., Isnard, J., Ryvlin, P., Fischer, C., Ostrowsky, K., Mauguiere, F., & Sindou, M.
32
33 (2001). Neurophysiological monitoring for epilepsy surgery: the Talairach SEEG
34
35 method. *StereoElectroEncephaloGraphy. Indications, results, complications and*
36
37 *therapeutic applications in a series of 100 consecutive cases. Stereotactic and functional*
38
39 *neurosurgery*, 77(1-4), 29-32. doi:10.1159/000064595
40
41
42 Halasz, P., Terzano, M., Parrino, L., & Bodizs, R. (2004). The nature of arousal in sleep. *J Sleep*
43
44 *Res*, 13(1), 1-23. doi:10.1111/j.1365-2869.2004.00388.x
45
46
47 Halasz, P., & Ujjaszsi, J. (1991). *Spectral features of evoked microarousals*. . New York Raven
48
49 Press.
50
51
52 Koulack, D., & Goodenough, D. R. (1976). Dream recall and dream recall failure: An arousal-
53
54 retrieval model. *Psychol. Bull.*, 83, 975-984.
55
56
57 Lambert, I., Roehri, N., Giusiano, B., Carron, R., Wendling, F., Benar, C., & Bartolomei, F.
58
59 (2018). Brain regions and epileptogenicity influence epileptic interictal spike
60

- 1
2
3 production and propagation during NREM sleep in comparison with wakefulness.
4
5 *Epilepsia*, 59(1), 235-243. doi:10.1111/epi.13958
6
7
8 Latreille, V., von Ellenrieder, N., Peter-Derex, L., Dubeau, F., Gotman, J., & Frauscher, B.
9
10 (2020). The human K-complex: Insights from combined scalp-intracranial EEG
11
12 recordings. *Neuroimage*, 213, 116748. doi:10.1016/j.neuroimage.2020.116748
13
14
15 Lauderdale, D. S., Knutson, K. L., Yan, L. L., Liu, K., & Rathouz, P. J. (2008). Self-reported
16
17 and measured sleep duration: how similar are they? *Epidemiology*, 19(6), 838-845.
18
19 doi:10.1097/EDE.0b013e318187a7b0
20
21
22 Lega, B. C., Jacobs, J., & Kahana, M. (2012). Human hippocampal theta oscillations and the
23
24 formation of episodic memories. *Hippocampus*, 22(4), 748-761.
25
26 doi:10.1002/hipo.20937
27
28
29 Magnin, M., Bastuji, H., Garcia-Larrea, L., & Mauguiere, F. (2004). Human thalamic medial
30
31 pulvinar nucleus is not activated during paradoxical sleep. *Cerebral cortex (New York,*
32
33 *N.Y. : 1991)*, 14(8), 858-862. doi:10.1093/cercor/bhh044
34
35
36 Magnin, M., Rey, M., Bastuji, H., Guillemant, P., Mauguiere, F., & Garcia-Larrea, L. (2010).
37
38 Thalamic deactivation at sleep onset precedes that of the cerebral cortex in humans.
39
40 *Proceedings of the National Academy of Sciences of the United States of America*,
41
42 107(8), 3829-3833. doi:10.1073/pnas.0909710107
43
44
45 Mari, F., Zelman, R., Andrade-Valenca, L., Dubeau, F., & Gotman, J. (2012). Continuous
46
47 high-frequency activity in mesial temporal lobe structures. *Epilepsia*, 53(5), 797-806.
48
49 doi:10.1111/j.1528-1167.2012.03428.x
50
51
52 Marzano, C., Ferrara, M., Moroni, F., & De Gennaro, L. (2011). Electroencephalographic sleep
53
54 inertia of the awakening brain. *Neuroscience*, 176, 308-317.
55
56 doi:10.1016/j.neuroscience.2010.12.014
57
58
59
60

- 1
2
3 Mizuseki, K., & Miyawaki, H. (2017). Hippocampal information processing across sleep/wake
4 cycles. *Neuroscience research*, *118*, 30-47. doi:10.1016/j.neures.2017.04.018
5
6
7
8 Montplaisir, J., Leduc, L., Laverdiere, M., Walsh, J., & Saint-Hilaire, J. M. (1981). Sleep
9 spindles in the human hippocampus: normal or epileptic activity? *Sleep*, *4*(4), 423-428.
10
11
12 Morel, A., Magnin, M., & Jeanmonod, D. (1997). Multiarchitectonic and stereotactic atlas of
13 the human thalamus. *The Journal of comparative neurology*, *387*(4), 588-630.
14
15
16
17 Moroni, F., Nobili, L., Curcio, G., De Carli, F., Fratello, F., Marzano, C., . . . Ferrara, M. (2007).
18 Sleep in the human hippocampus: a stereo-EEG study. *PloS one*, *2*(9), e867.
19
20
21
22
23
24 Nielsen, T. A. (2000). A review of mentation in REM and NREM sleep: "covert" REM sleep
25 as a possible reconciliation of two opposing models. *Behav Brain Sci*, *23*(6), 851-866;
26
27
28
29
30
31
32
33
34
35
36
37
38
39
40
41
42
43
44
45
46
47
48
49
50
51
52
53
54
55
56
57
58
59
60
- Nobili, L., Ferrara, M., Moroni, F., De Gennaro, L., Russo, G. L., Campus, C., . . . De Carli, F. (2011). Dissociated wake-like and sleep-like electro-cortical activity during sleep. *Neuroimage*, *58*(2), 612-619. doi:10.1016/j.neuroimage.2011.06.032
- Ostrowsky, K., Magnin, M., Ryvlin, P., Isnard, J., Guenot, M., & Mauguiere, F. (2002). Representation of pain and somatic sensation in the human insula: a study of responses to direct electrical cortical stimulation. *Cerebral cortex (New York, N.Y. : 1991)*, *12*(4), 376-385.
- Peter-Derex, L., Comte, J.-C., Mauguiere, F., & Salin, P. A. (2012). Density and frequency caudo-rostral gradients of sleep spindles recorded in the human cortex. *Sleep*, *35*(1), 69-79. doi:10.5665/sleep.1588
- Peter-Derex, L., Magnin, M., & Bastuji, H. (2015). Heterogeneity of arousals in human sleep: A stereo-electroencephalographic study. *Neuroimage*, *123*, 229-244. doi:10.1016/j.neuroimage.2015.07.057

- 1
2
3 Rosenberg, D. S., Mauguiere, F., Demarquay, G., Ryvlin, P., Isnard, J., Fischer, C., . . . Magnin,
4
5 M. (2006). Involvement of medial pulvinar thalamic nucleus in human temporal lobe
6
7 seizures. *Epilepsia*, *47*(1), 98-107. doi:10.1111/j.1528-1167.2006.00375.x
8
9
- 10 Ruby, P., Blochet, C., Eichenlaub, J. B., Bertrand, O., Morlet, D., & Bidet-Caulet, A. (2013).
11
12 Alpha reactivity to first names differs in subjects with high and low dream recall
13
14 frequency. *Front Psychol*, *4*, 419. doi:10.3389/fpsyg.2013.00419
15
16
- 17 Ruch, S., & Henke, K. (2020). Learning During Sleep: A Dream Comes True? *Trends in*
18
19 *cognitive sciences*, *24*(3), 170-172. doi:10.1016/j.tics.2019.12.007
20
21
- 22 Sarasso, S., Pigorini, A., Proserpio, P., Gibbs, S. A., Massimini, M., & Nobili, L. (2014). Fluid
23
24 boundaries between wake and sleep: experimental evidence from Stereo-EEG
25
26 recordings. *Archives italiennes de biologie*, *152*(2-3), 169-177.
27
28 doi:10.12871/0002982920142311
29
- 30 Sarasso, S., Proserpio, P., Pigorini, A., Moroni, F., Ferrara, M., De Gennaro, L., . . . Nobili, L.
31
32 (2014). Hippocampal sleep spindles preceding neocortical sleep onset in humans.
33
34 *Neuroimage*, *86*, 425-432. doi:10.1016/j.neuroimage.2013.10.031
35
36
- 37 Squire, L. R., & Zola-Morgan, S. (1991). The medial temporal lobe memory system. *Science*
38
39 (*New York, N.Y.*), *253*(5026), 1380-1386.
40
41
- 42 Staresina, B. P., Bergmann, T. O., Bonnefond, M., van der Meij, R., Jensen, O., Deuker, L., . .
43
44 . Fell, J. (2015). Hierarchical nesting of slow oscillations, spindles and ripples in the
45
46 human hippocampus during sleep. *Nature neuroscience*, *18*(11), 1679-1686.
47
48 doi:10.1038/nn.4119
49
- 50
51 Stepanski, E., Lamphere, J., Badia, P., Zorick, F., & Roth, T. (1984). Sleep fragmentation and
52
53 daytime sleepiness. *Sleep*, *7*(1), 18-26. doi:10.1093/sleep/7.1.18
54
55
56
57
58
59
60

- 1
2
3 Stickgold, R., Malia, A., Fosse, R., Propper, R., & Hobson, J. A. (2001). Brain-mind states: I.
4
5 Longitudinal field study of sleep/wake factors influencing mentation report length.
6
7 *Sleep*, 24(2), 171-179.
8
9
- 10 Suzuki, W. A. (2006). Encoding new episodes and making them stick. *Neuron*, 50(1), 19-21.
11
12 doi:10.1016/j.neuron.2006.03.029
13
- 14 Tassi, P., & Muzet, A. (2000). Sleep inertia. *Sleep Med Rev*, 4(4), 341-353.
15
16 doi:10.1053/smr.2000.0098
17
18
- 19 Terzaghi, M., Sartori, I., Tassi, L., Didato, G., Rustioni, V., LoRusso, G., . . . Nobili, L. (2009).
20
21 Evidence of dissociated arousal states during NREM parasomnia from an intracerebral
22
23 neurophysiological study. *Sleep*, 32(3), 409-412.
24
25
- 26 Tononi, G., & Cirelli, C. (2014). Sleep and the price of plasticity: from synaptic and cellular
27
28 homeostasis to memory consolidation and integration. *Neuron*, 81(1), 12-34.
29
30 doi:10.1016/j.neuron.2013.12.025
31
32
- 33 Vallat, R., Lajnef, T., Eichenlaub, J.-B., Berthomier, C., Jerbi, K., Morlet, D., & Ruby, P. M.
34
35 (2017). Increased Evoked Potentials to Arousing Auditory Stimuli during Sleep:
36
37 Implication for the Understanding of Dream Recall. *Frontiers in human neuroscience*,
38
39 11, 132. doi:10.3389/fnhum.2017.00132
40
41
- 42 Vallat, R., Meunier, D., Nicolas, A., & Ruby, P. (2019). Hard to wake up? The cerebral
43
44 correlates of sleep inertia assessed using combined behavioral, EEG and fMRI
45
46 measures. *Neuroimage*, 184, 266-278. doi:10.1016/j.neuroimage.2018.09.033
47
48
- 49 von Ellenrieder, N., Gotman, J., Zemann, R., Rogers, C., Nguyen, D. K., Kahane, P., . . .
50
51 Frauscher, B. (2020). How the Human Brain Sleeps: Direct Cortical Recordings of
52
53 Normal Brain Activity. *Annals of neurology*, 87(2), 289-301. doi:10.1002/ana.25651
54
55
56
57
58
59
60

- 1
2
3 Vyazovskiy, V. V., Cui, N., Rodriguez, A. V., Funk, C., Cirelli, C., & Tononi, G. (2014). The
4
5 dynamics of cortical neuronal activity in the first minutes after spontaneous awakening
6
7 in rats and mice. *Sleep*, 37(8), 1337-1347. doi:10.5665/sleep.3926
8
9
10 Walker, M. P., & Stickgold, R. (2004). Sleep-dependent learning and memory consolidation.
11
12 *Neuron*, 44(1), 121-133. doi:10.1016/j.neuron.2004.08.031
13
14
15 Watrous, A. J., Lee, D. J., Izadi, A., Gurkoff, G. G., Shahlaie, K., & Ekstrom, A. D. (2013). A
16
17 comparative study of human and rat hippocampal low-frequency oscillations during
18
19 spatial navigation. *Hippocampus*, 23(8), 656-661. doi:10.1002/hipo.22124
20
21
22 Winsor, M. A., McBean, A. L., & Montgomery-Downs, H. E. (2013). Minimum duration of
23
24 actigraphy-defined nocturnal awakenings necessary for morning recall. *Sleep Med*,
25
26 14(7), 688-691. doi:10.1016/j.sleep.2013.03.018
27
28
29
30
31
32
33
34
35
36
37
38
39
40
41
42
43
44
45
46
47
48
49
50
51
52
53
54
55
56
57
58
59
60

1
2
3 **Tables**
4
5
6
7

8 **Table 1:** clinical and demographic characteristics of the patients

9
10 (MRI: Magnetic Resonance Imaging)

11
12
13
14
15
16
17
18
19
20
21
22
23
24
25
26
27
28
29
30
31
32
33
34
35
36
37
38
39
40
41
42
43
44
45
46
47
48
49
50
51
52
53
54
55
56
57
58
59
60

Patient	Age	Gender	Epilepsy diagnosis	MRI	Treatment (mg) (at the time of the night recording)	Implanted hippocampus (selected for analyses)
1	35	M	Left mesio-temporal	Left temporal polymicrogyria	Levetiracetam (250) Lacosamide (50) Clobazam (10)	<u>L+R</u>
2	19	M	Right temporal pole	Normal	None	R
3	33	M	Right temporal neocortex	Right superior temporal gyrus dysplasia	Clobazam (10)	<u>L+R</u>
4	45	F	Left mesio-temporal	Normal	Lacosamide (300) Lamotrigine (350)	<u>L+R</u>

Figures legends

Figure 1. Recording contact locations represented on MNI Brain template and Morel's thalamic atlas.

The reconstruction of hippocampus, orbito-frontal cortex and thalamus contacts locations on the MNI brain template is presented for the 4 patients. For the thalamus, left and right side are merged in the zoom window which shows the location of the different nuclei on the Morel's atlas.

R=right L=left. Each color refers to a patient: Patient 1: blue circle; patient 2: red circle; patient 3: green circle; patient 4: yellow circle. Thalamic nuclei: PuM = medial pulvinar; CL = central lateral; L = lateral posterior; VLp = ventral lateral posterior. The two horizontal lines indicates the positions of the anterior and posterior commissures. D8.1: horizontal plane 8.1 mm dorsal to the horizontal inter-commissural plane.

Figure 2. Temporal windows of interest for analyses of Intra-Sleep Arousal Reactions (ISAR)

Baseline time window (baseline-tw, 10s) is presented in blue. It corresponds to the ongoing sleep stage. Onset time window (onset-tw, 5s) is represented yellow. It starts 2s before the onset of the thalamic-detected arousal reaction and ends 3s after. Wake time window (wake-tw, 10s) is represented in red.

For the first analysis (A), body time window (body-tw, variable duration, min 2s, max 1min57s) is represented in orange. For the second analysis (B), the 5s long middle-tw (5s in the middle of the ISAR) and end-tw (5 last seconds of the ISAR) are represented in orange.

The vertical red dashed line represents the onset of the thalamic-detected arousal reaction.

1
2
3 In the example presented in the middle of the figure (patient #1), the intra-sleep arousal reaction
4 occurs in N2 (see the thalamic and prefrontal cortex spindles, black arrows). A slow wave is
5
6 observed in the prefrontal cortex just before the thalamic arousal onset (dotted black arrow).
7
8
9

10
11
12 **Figure 3. Examples Intra-Sleep Arousal Reactions (ISAR) in the hippocampus and in the**
13 **prefrontal cortex: raw data and time-frequency analysis**
14
15

16
17 **Figure 3A.** Examples of ISAR detected using the thalamic activity, in the thalamus, the
18 hippocampus and the prefrontal cortex of patient #2, during N2 (arousal, top) and REM sleep
19 (awakening, bottom). T=0s corresponds to the onset of the arousal/awakening in the thalamus.
20
21 In N2, sleep spindles are observed in the thalamus and the hippocampus structures (black
22 arrows). In REM, the typical high delta activity is observed in the thalamus. Note the discrete
23 asynchrony between the three structures: in the N2 example, the increase in high frequencies in
24 the hippocampus (dashes black arrow) and a high amplitude slow wave in the prefrontal cortex
25 (dotted black arrow) precede the ISAR onset of the thalamus; in the REM example, the increase
26 in high frequencies in the hippocampus (dashes black arrow) is observed before the ISAR onset
27 in the thalamus, while few modifications are observed in the prefrontal cortex.
28
29
30
31
32
33
34
35
36
37
38
39

40 **Figure 3B.** Time frequency-representation of ISAR ordered by duration in the same patient in
41 N2. The signal power in the delta band is represented in the thalamus, in the hippocampus and
42 in the prefrontal cortex. N arousals are ordered by duration so that the shortest is at the top and
43 the longest is at the bottom. White points delimit the onset and the end of the arousals according
44 to the scoring performed on the thalamus lead. The figure shows that the strong decrease in the
45 thalamus delta power, used to delimit ISAR, is also visible in the hippocampus and in the
46 prefrontal cortex, and exhibits overall a similar timing.
47
48
49
50
51
52
53
54
55
56
57
58
59
60

1
2
3 **Figure 4. Evolution of spectral power of the signal during sleep, Intra-Sleep Arousal**
4 **Reactions (ISAR) and wakefulness in the hippocampus.**

5
6
7
8 Mean power (\pm sd) in different frequency bands (from low delta to gamma).

9
10 **Figure 4A:** First analysis, during selected temporal windows: baseline-tw, onset-tw and body-
11 tw, and wake-tw.

12
13
14 **Figure 4B:** Second analysis, during selected temporal windows: baseline-tw, onset-tw, middle-
15 tw, end-tw and wake-tw.

16
17
18 Transparent circle: N2 sleep; Black circle: REM sleep

19
20
21 Significant differences between time windows (adjusted p-values) are presented on the figure
22 with horizontal lines located at the top (N2) or the bottom (REM) of each frequency-band graph
23 (detailed statistical analyses are presented in supplementary Tables 1 and 2).

24
25
26
27
28
29
30 **Figure 5. Evolution of spectral power of the signal during sleep, Intra-Sleep Arousal**
31 **Reactions (ISAR) and wakefulness in the prefrontal cortex.**

32
33
34
35 Mean power (\pm sd) in different frequency bands (from low delta to gamma).

36
37
38 **Figure 5A:** First analysis, during selected temporal windows: baseline-tw, onset-tw and body-
39 tw, and wake-tw.

40
41
42 **Figure 5B:** Second analysis, during selected temporal windows: baseline-tw, onset-tw, middle-
43 tw, end-tw and wake-tw.

44
45
46 Transparent circle: N2 sleep; Black circle: REM sleep

47
48
49 Significant differences between time windows (adjusted p-values) are presented on the figure
50 with horizontal lines located at the top (N2) or the bottom (REM) of each frequency-band graph
51 (detailed statistical analyses are presented in supplementary Tables 3 and 4).

1
2
3 **Figure 6. Evolution of spectral power of the signal during sleep, Intra-Sleep Arousal**
4 **Reactions (ISAR) and wakefulness in the prefrontal cortex according to the duration of**
5 **ISAR**
6
7
8
9

10 Signal power in selected time windows (baseline-tw, onset-tw and body-tw, and wake-tw) is
11 shown in the prefrontal cortex for arousals (3 to 15 s, transparent circles and dotted lines) and
12 awakening (15 s to 2 min, full circles, continuous line) in N2 (black) and REM (grey) sleep.
13
14 Statistically significant differences between arousals and short awakenings for contrast between
15 baseline-tw and onset-tw, between onset-tw and body-tw and between body and wake-tw are
16 indicated with stars. In N2, and in a less extent in REM, longer ISAR are associated with a
17 greater early increase and greater secondary decrease in low and fast activities, with activity
18 during the second part of the arousing reaction being closer to wake-like activity than is the
19 case for short ISAR.
20
21
22
23
24
25
26
27
28
29
30
31
32

33 **Supporting Information**

34 **Supplementary Figure**

35
36
37 Examples of arousals observed in intracranial and scalp derivations (patient 4) in N2, N3 and
38
39 REM sleep
40

41
42 Three intracranial channels are showed (top); they record from the thalamus, the hippocampus
43 and the orbitofrontal-cortex. Below are showed right-hemispheric scalp channels
44 (contro-lateral to the epileptic focus which prevented scalp exploration of the left side
45 given the high number of intracranial electrodes on this side and the infectious risk), the
46 EOG and EKG. The red square indicates the thalamic arousal.
47
48
49
50
51
52

- 53
54 - In N2, the arousal consists in a desynchronized fast activity observed in every intracranial
55 channels and in scalp; note the mixed slow waves in all channels except for the
56 thalamus.
57
58
59
60

1
2
3 - In N3, the onset of the arousal is clearly seen in the thalamus where the fast activity
4
5 contrasts with the preceding slow waves, whereas mixed slow and fast activities are
6
7 observed at the same time in the hippocampus, the orbitofrontal cortex and scalp
8
9 channels (black arrow).
10

11
12 - In REM, the very particular slow activity in the thalamus allows for a clear temporal
13
14 delimitation of the arousal, which is also observed in the hippocampus and orbitofrontal
15
16 cortex (increase in fast frequencies) as well as scalp channels (alpha activity). Note the
17
18 electromyographic artifacts (dotted black arrow) in the scalp EEG where the arousal
19
20 seems to start 1 second before the thalamic arousal.
21
22
23
24
25
26
27
28
29
30

31 **Supplementary Table 1. Comparison of spectral power between four time windows (first**
32 **analysis) in the hippocampus**

33 **Supplementary Table 1A. N2 sleep Intra Sleep Awakening Reactions**

34 **Supplementary Table 1B. REM sleep Intra Sleep Awakening Reactions**

35
36
37
38
39
40
41
42 **Supplementary Table 2. Comparison of spectral power between five time windows**
43 **(second analysis) in the hippocampus**

44 **Supplementary Table 2A. N2 sleep Intra Sleep Awakening Reactions**

45 **Supplementary Table 2B. REM sleep Intra Sleep Awakening Reactions**

46
47
48
49
50
51
52
53
54 **Supplementary Table 3. Comparison of spectral power between four time windows (first**
55 **analysis) in the prefrontal cortex**

56 **Supplementary Table 3A. N2 sleep Intra Sleep Awakening Reactions**

1
2
3 **Supplementary Table 3B. REM sleep Intra Sleep Awakening Reactions**
4
5

6
7 **Supplementary Table 4. Comparison of spectral power between four time windows**
8
9 **(second analysis) in the prefrontal cortex**
10

11 **Supplementary Table 4A. N2 sleep Intra Sleep Awakening Reactions**

12
13
14 **Supplementary Table 4B. REM sleep Intra Sleep Awakening Reactions**
15
16
17
18
19
20
21
22
23
24
25
26
27
28
29
30
31
32
33
34
35
36
37
38
39
40
41
42
43
44
45
46
47
48
49
50
51
52
53
54
55
56
57
58
59
60

For Peer Review

1
2
3
4
5
6
7
8
9
10
11
12
13
14
15
16
17
18
19
20
21
22
23
24
25
26
27
28
29
30
31
32
33
34
35
36
37
38
39
40
41
42
43
44
45
46
47
48
49
50
51
52
53
54
55
56
57
58
59
60

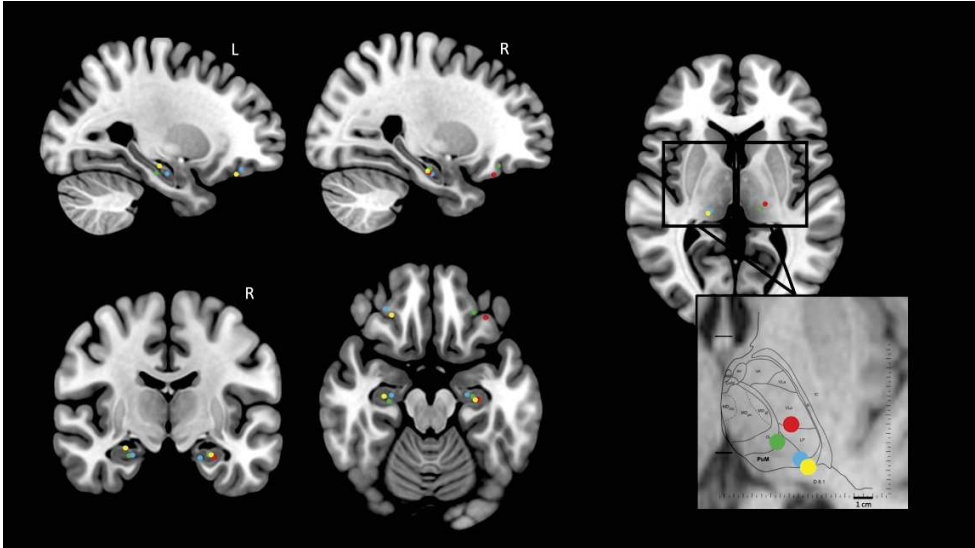


Figure 1. Recording contact locations represented on MNI Brain template and Morel's thalamic atlas. The reconstruction of hippocampus, orbito-frontal cortex and thalamus contacts locations on the MNI brain template is presented for the 4 patients. For the thalamus, left and right side are merged in the zoom window which shows the location of the different nuclei on the Morel's atlas. R=right L=left. Each color refers to a patient: Patient 1: blue circle; patient 2: red circle; patient 3: green circle; patient 4: yellow circle. Thalamic nuclei: PuM = medial pulvinar; CL = central lateral; L = lateral posterior; VLp = ventral lateral posterior. The two horizontal lines indicates the positions of the anterior and posterior commissures. D8.1: horizontal plane 8.1 mm dorsal to the horizontal inter-commissural plane.

1411x793mm (72 x 72 DPI)

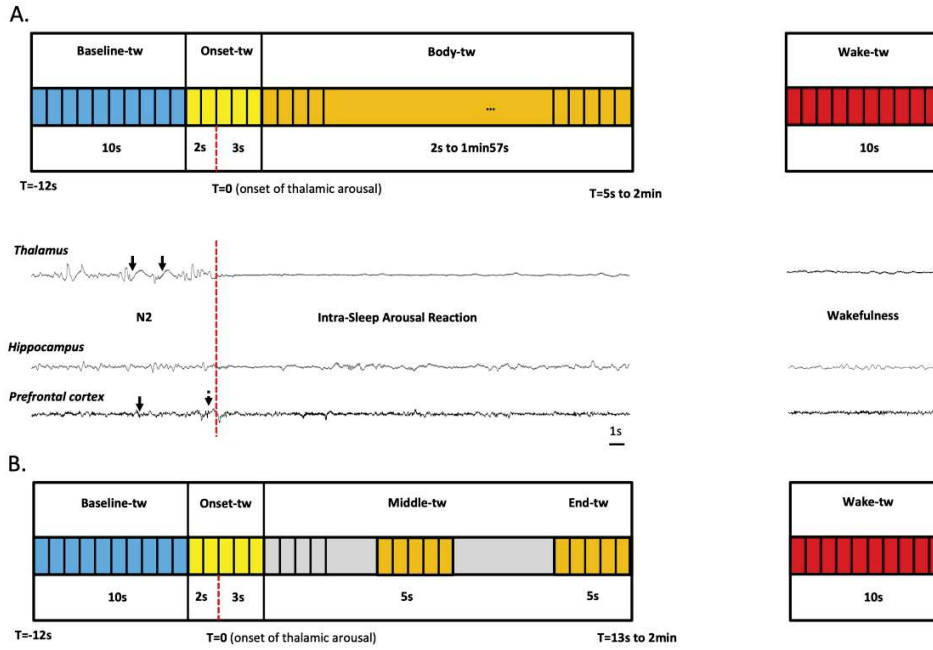
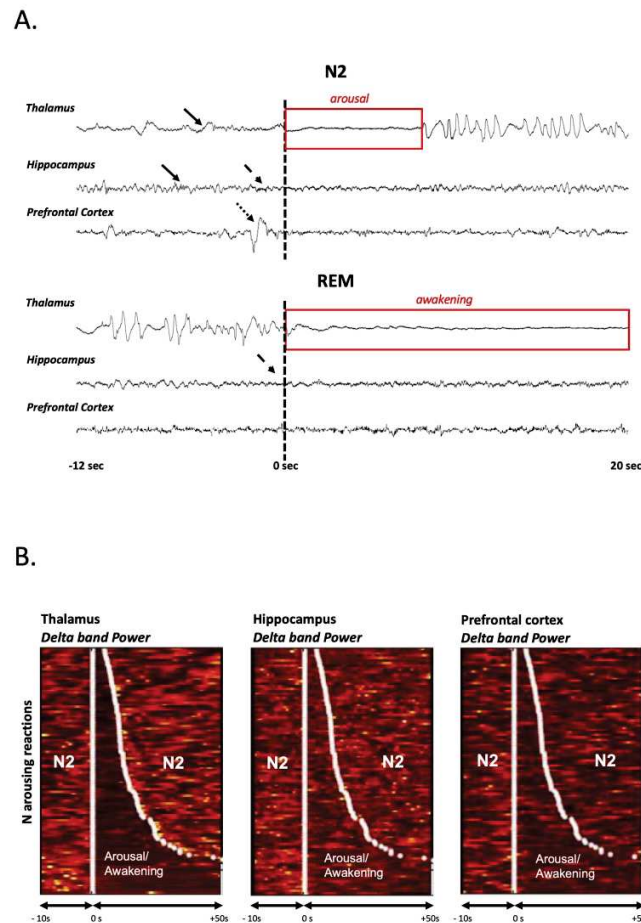


Figure 2. Temporal windows of interest for analyses of Intra-Sleep Arousal Reactions (ISAR). Baseline time window (baseline-tw, 10s) is presented in blue. It corresponds to the ongoing sleep stage. Onset time window (onset-tw, 5s) is represented in yellow. It starts 2s before the onset of the thalamic-detected arousal reaction and ends 3s after. Wake time window (wake-tw, 10s) is represented in red. For the first analysis (A), body time window (body-tw, variable duration, min 2s, max 1min57s) is represented in orange. For the second analysis (B), the 5s long middle-tw (5s in the middle of the ISAR) and end-tw (5 last seconds of the ISAR) are represented in orange. The vertical red dashed line represents the onset of the thalamic-detected arousal reaction. In the example presented in the middle of the figure (patient #1), the intra-sleep arousal reaction occurs in N2 (see the thalamic and prefrontal cortex spindles, black arrows). A slow wave is observed in the prefrontal cortex just before the thalamic arousal onset (dotted black arrow).

1058x793mm (72 x 72 DPI)



45 Figure 3. Examples Intra-Sleep Arousal Reactions (ISAR) in the hippocampus and in the prefrontal cortex:
46 raw data and time-frequency analysis

47 Figure 3A. Examples of ISAR detected using the thalamic activity, in the thalamus, the hippocampus and the
48 prefrontal cortex of patient #2, during N2 (arousal, top) and REM sleep (awakening, bottom). T=0s
49 corresponds to the onset of the arousal/awakening in the thalamus. In N2, sleep spindles are observed in
50 the thalamus and the hippocampus structures (black arrows). In REM, the typical high delta activity is
51 observed in the thalamus. Note the discrete asynchrony between the three structures: in the N2 example,
52 the increase in high frequencies in the hippocampus (dashes black arrow) and a high amplitude slow wave in
53 the prefrontal cortex (dotted black arrow) precede the ISAR onset of the thalamus; in the REM example, the
54 increase in high frequencies in the hippocampus (dashes black arrow) is observed before the ISAR onset in
55 the thalamus, while few modifications are observed in the prefrontal cortex.

56 Figure 3B. Time frequency-representation of ISAR ordered by duration in the same patient in N2. The signal
57 power in the delta band is represented in the thalamus, in the hippocampus and in the prefrontal cortex. N
58 arousals are ordered by duration so that the shortest is at the top and the longest is at the bottom. White
59
60

1
2
3 points delimit the onset and the end of the arousals according to the scoring performed on the thalamus
4 lead. The figure shows that the strong decrease in the thalamus delta power, used to delimit ISAR, is also
5 visible in the hippocampus and in the prefrontal cortex, and exhibits overall a similar timing.
6

7
8 793x1411mm (72 x 72 DPI)
9
10
11
12
13
14
15
16
17
18
19
20
21
22
23
24
25
26
27
28
29
30
31
32
33
34
35
36
37
38
39
40
41
42
43
44
45
46
47
48
49
50
51
52
53
54
55
56
57
58
59
60

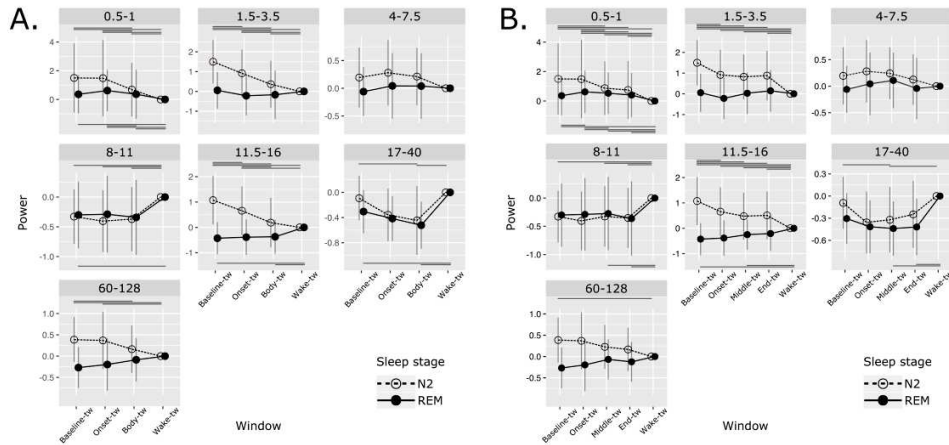


Figure 4. Evolution of spectral power of the signal during sleep, Intra-Sleep Arousal Reactions (ISAR) and wakefulness in the hippocampus.

Mean power (\pm sd) in different frequency bands (from low delta to gamma).

Figure 4A: First analysis, during selected temporal windows: baseline-tw, onset-tw and body-tw, and wake-tw.

Figure 4B: Second analysis, during selected temporal windows: baseline-tw, onset-tw, middle-tw, end-tw and wake-tw.

Transparent circle: N2 sleep; Black circle: REM sleep

Significant differences between time windows (adjusted p-values) are presented on the figure with horizontal lines located at the top (N2) or the bottom (REM) of each frequency-band graph (detailed statistical analyses are presented in supplementary Tables 1 and 2).

352x162mm (600 x 600 DPI)

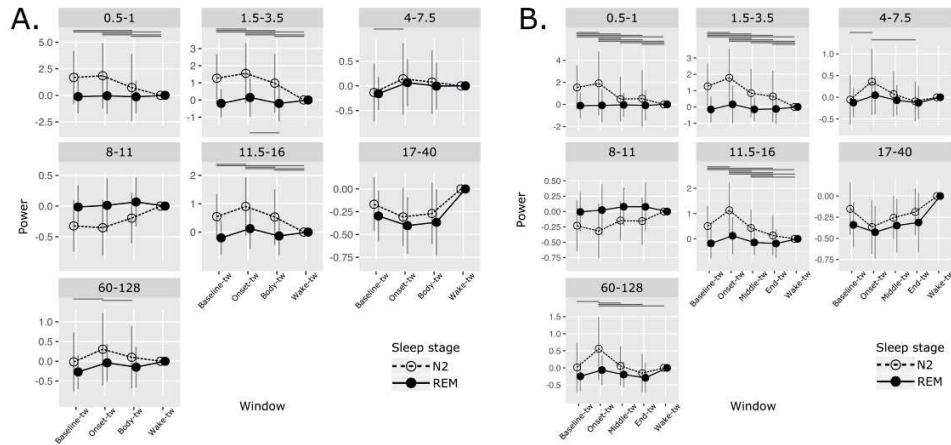


Figure 5. Evolution of spectral power of the signal during sleep, Intra-Sleep Arousal Reactions (ISAR) and wakefulness in the prefrontal cortex.

Mean power (\pm sd) in different frequency bands (from low delta to gamma).

Figure 5A: First analysis, during selected temporal windows: baseline-tw, onset-tw and body-tw, and wake-tw.

Figure 5B: Second analysis, during selected temporal windows: baseline-tw, onset-tw, middle-tw, end-tw and wake-tw.

Transparent circle: N2 sleep; Black circle: REM sleep

Significant differences between time windows (adjusted p-values) are presented on the figure with horizontal lines located at the top (N2) or the bottom (REM) of each frequency-band graph (detailed statistical analyses are presented in supplementary Tables 3 and 4).

352x161mm (600 x 600 DPI)

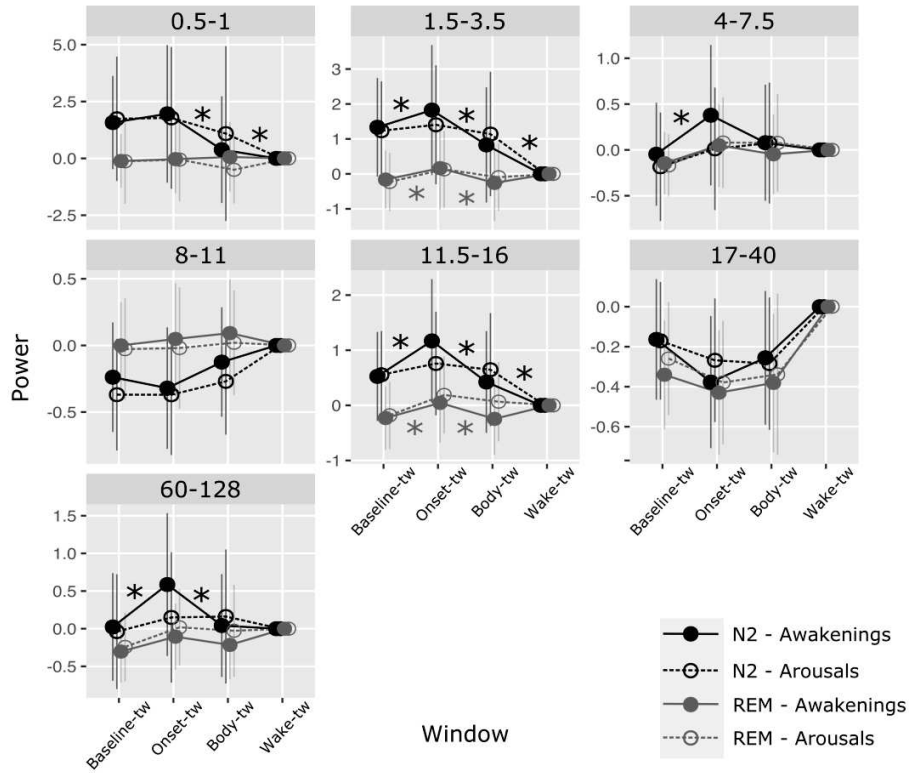


Figure 6. Evolution of spectral power of the signal during sleep, Intra-Sleep Arousal Reactions (ISAR) and wakefulness in the prefrontal cortex according to the duration of ISAR

Signal power in selected time windows (baseline-tw, onset-tw and body-tw, and wake-tw) is shown in the prefrontal cortex for arousals (3 to 15 s, transparent circles and dotted lines) and awakening (15 s to 2 min, full circles, continuous line) in N2 (black) and REM (grey) sleep. Statistically significant differences between arousals and short awakenings for contrast between baseline-tw and onset-tw, between onset-tw and body-tw and between body and wake-tw are indicated with stars. In N2, and in a less extent in REM, longer ISAR are associated with a greatest early increase and greatest secondary decrease in low and fast activities, with activity during the second part of the arousing reaction being closer to wake-like activity than is the case for short ISAR.

183x148mm (600 x 600 DPI)

Table 1: clinical and demographic characteristics of the patients

(MRI: Magnetic Resonance Imaging)

Patient	Age	Gender	Epilepsy diagnosis	MRI	Treatment (mg) (at the time of the night recording)	Implanted hippocampus (selected for analyses)
1	35	M	Left mesio-temporal	Left temporal polymicrogyria	Levetiracetam (250) Lacosamide (50) Clobazam (10)	L+ <u>R</u>
2	19	M	Right temporal pole	Normal	None	R
3	33	M	Right temporal neocortex	Right superior temporal gyrus dysplasia	Clobazam (10)	<u>L</u> +R
4	45	F	Left mesio-temporal	Normal	Lacosamide (300) Lamotrigine (350)	L+ <u>R</u>