



HAL
open science

On *Elaphidion tuberculicolle* Fisher, 1932 and *Elaphidion scaramuzzai* Fisher, 1951 (Coleoptera, Cerambycidae)

Sergio Devesa, Antonio Santos Silva

► To cite this version:

Sergio Devesa, Antonio Santos Silva. On *Elaphidion tuberculicolle* Fisher, 1932 and *Elaphidion scaramuzzai* Fisher, 1951 (Coleoptera, Cerambycidae). *Faunitaxys*, 2023, 11 (33), pp.1-7. <hal-04096922v2>

HAL Id: hal-04096922

<https://hal.science/hal-04096922v2>

Submitted on 17 May 2023

HAL is a multi-disciplinary open access archive for the deposit and dissemination of scientific research documents, whether they are published or not. The documents may come from teaching and research institutions in France or abroad, or from public or private research centers.

L'archive ouverte pluridisciplinaire HAL, est destinée au dépôt et à la diffusion de documents scientifiques de niveau recherche, publiés ou non, émanant des établissements d'enseignement et de recherche français ou étrangers, des laboratoires publics ou privés.



Distributed under a Creative Commons CC BY-NC-ND 4.0 - Attribution - Non-commercial use - No Derivative Works - International License

Faunitaxys

*Revue de Faunistique, Taxonomie et Systématique
morphologique et moléculaire*



Volume 11
Numéro 33

Mai 2023

ISSN (Print) : 2269 - 6016
ISSN (Online) : 2970 - 4960
Dépôt légal : Mai 2023

Faunitaxys

*Revue de Faunistique, Taxonomie et Systématique
morphologique et moléculaire*

ZooBank : <http://zoobank.org/79A36B2E-F645-4F9A-AE2B-ED32CE6771CC>

Directeur de la publication, rédacteur, conception graphique et PAO:

Lionel Delaunay

Cette revue ne peut pas être vendue

Elle est distribuée par échange aux institutions (version papier)

et sur simple demande aux particuliers (format PDF)

à l'adresse suivante:

AFCFF (Association française de Cartographie de la Faune et de la Flore)

28, rue Voltaire, F- 42100 Saint Etienne

E-mail: faunitaxys.journal@gmail.com

Elle est disponible librement au téléchargement à partir du site:

<http://faunitaxys.fr/>

La parution de *Faunitaxys* est apériodique

Faunitaxys est indexé dans / *Faunitaxys* is indexed in:

- **Zoological Record**

Articles and nomenclatural novelties are referenced by:

- **ZooBank** (<http://zoobank.org>)

Online Archives:

- **HAL** (<https://hal.archives-ouvertes.fr>)

- **Internet Archive** (<https://archive.org>)

Imprimée sur les presses de SPEED COPIE, 6, rue Tréfilerie, F- 42100 Saint-Etienne

Imprimé le 13 05 2023

On *Elaphidion tuberculicolle* Fisher, 1932 and *Elaphidion scaramuzzai* Fisher, 1951 (Coleoptera, Cerambycidae)

SERGIO DEVESA (1, *) & ANTONIO SANTOS-SILVA (2)

(1) La Iglesia, 4, 36988 O Grove-San Vicente, Pontevedra, España.

- sergio.devesa@gmail.com - Orcid: <https://orcid.org/0000-0003-4159-4776>

- ZooBank: <http://zoobank.org/AD8E9FB4-1249-43B9-B4B3-B633721E4D39>

(2) Museu de Zoologia, Universidade de São Paulo, Avenida Nazaré # 481, 04263-000, São Paulo, SP, Brazil.

- toncriss@uol.com.br - Orcid: <https://orcid.org/0000-0001-7128-1418>

- ZooBank: <http://zoobank.org/147209A1-FA0E-4AE3-8F10-A5CADAB6EE98>

* Corresponding author

Keywords:

Cerambycidae;
Lamiinae;
Longhorned woodboring beetles;
Elaphidion;
taxonomy;
Neotropical region.

Abstract. – The difference between *Elaphidion tuberculicolle* Fisher, 1932 and *E. scaramuzzai* Fisher, 1951 is reported, and the differences pointed out in the original description of the latter are commented on. The key to species of Elaphidiini from Cuba by Devesa *et al.* (2015) is partially modified.

Devesa S. & Santos-Silva A., 2023. – On *Elaphidion tuberculicolle* Fisher, 1932 and *Elaphidion scaramuzzai* Fisher, 1951 (Coleoptera, Cerambycidae). *Faunitaxys*, 11(33): 1 – 7.

DOI: [https://doi.org/10.57800/faunitaxys-11\(33\)](https://doi.org/10.57800/faunitaxys-11(33))

ZooBank: <http://zoobank.org/AFEBA628-2968-476E-BFC0-85010B2A64A7>

Received: 26/04/2023 – Revised: 06/05/2023 – Accepted: 07/05/2023

Introduction

Recently, we have been discussing whether or not there are differential features separating *Elaphidion scaramuzzai* Fisher, 1951 from *E. tuberculicolle* Fisher, 1932. Discussion regarding the possible synonymy is not recent and has already been expressed by Zayas (1975). Examining a large number of specimens, we found a single feature that clearly separates them although they are quite similar. The differences pointed out between them in the original description of *E. scaramuzzai* are discussed and refuted.

Elaphidion Audinet-Serville, 1834 is a large genus of Elaphidiini, with 60 species distributed from Canada to southern Central America, with many species occurring in the Caribbean islands (Monné 2023; Tavakilian & Chevillotte 2022). According to Devesa *et al.* (2015), 22 species were known from Cuba; one new species was described from Cuba by Devesa & Grillo (2016) and *Elaphidion fullonium* Newman, 1841 was recorded from Cuba by Devesa *et al.* (2019). Monné (2023) listed 24 species because he included *E. tomentosum* Chevrolat (1862), which had been previously excluded from the Cuban fauna by Devesa *et al.* (2015) and *Elaphidion excelsum* Gahan, 1895, which was a misidentification of *E. conspersum* by Zayas (1975).

The great polymorphism found in the species currently included in this genus suggests that there is more than one genus included among the species of *Elaphidion*. Lingafelter and Ivie (2005) redescribed *Elaphidion* as follows: “Elytral apex with strong spines in most specimens. Spination of antennomeres (especially the third) usually strong. Antennomere three of males about two-thirds the length of pronotum. Median pronotal callus present, often very pronounced. Prosternal projection strongly, abruptly declivous between procoxae in most species. Mesosternum with lateral projection into mesocoxa. Mesal mesofemoral and metafemoral

apex spinose. Lateral mesofemoral apex dentiform. Lateral metafemoral apex spinose. Tibiae and antennae not carinate.”

Material and Methods

Photographs were taken with a Canon EOS 5D Mark III DSLR camera equipped with a Canon MP-E 65mm f/2.8 1–5X macro lens, controlled by Cognisys Stackshot; photographs were stacked using Zerene Stacker AutoMontage software and processed with Capture One 21 software.

The acronyms used in the text are as follows:

CZACC – Colección Zoológica de la Academia de Ciencias de Cuba (Instituto de Ecología y Sistemática), La Habana, Cuba.

CZCTR – Museo de Historia Natural “Charles T. Ramsden”, Santiago de Cuba, Cuba.

FZPC – Fernando de Zayas Private Collection, La Habana, Cuba.

JTPC – Julien Tourout Private Collection, Montreuil, France

MZSP – Museu de Zoologia, Universidade de São Paulo, São Paulo, Brazil.

SDPC – Sergio Devesa Private Collection, Pontevedra, Spain.

Results

CERAMBYCIDAE Latreille, 1802

CERAMBYCINAE Latreille, 1802

ELAPHIDIINI Thomson, 1864

Elaphidion Audinet-Serville, 1834

Elaphidion tuberculicolle Fisher, 1932: 25; Devesa *et al.*, 2015: 224. (Fig. 1-29, 34-36 & 41).

Elaphidion scaramuzzai Fisher, 1951: 77; Devesa *et al.*, 2015: 220 (part). (Fig. 30-33 & 37-40).

Reviewer:

Larry G. Bezark (USA) - ZooBank: <http://zoobank.org/25C35904-2035-4416-9534-8641C1551196>



This is an open access article under the terms of the Creative Commons Attribution-NonCommercial-NoDerivs License, which permits use and distribution in any medium, provided the original work is properly cited, the use is non-commercial and no modifications or adaptations are made.

Copyright 2022 The Authors. *Faunitaxys* published by Lionel Delaunay on behalf of the AFCFF (Association française de Cartographie de la Faune et de la Flore).

Remarks. – According to Fisher (1951), *E. scaramuzzai* is similar to *E. tuberculicolle*, but differs by the body more broadly elongate, darker color, not having the elytra costate posteriorly, antennomeres III–VI unispinose at apex, and each elytron ornamented with a large, irregular, glabrous area along the sutural margin and a distinct irregular space of dense white pubescence in front of the middle.

However, comparing photographs of the holotypes:

1. The body shape is nearly identical in both;
2. The color in the holotype of *E. scaramuzzai* (described as being brownish black) appears to be slightly darker than in the holotype of *E. tuberculicolle* (described as being brownish black). However, the color is also variable in several specimens of *E. tuberculicolle* examined (Fig. 1-29), at least on some areas: from dark brown to black. Therefore, the color is not a specific feature: it is just chromatic variation;
3. The posterior half of the elytra is clearly carinate in both holotypes;
4. Although it is not possible to verify in the photograph of the holotype of *E. tuberculicolle* whether there really is not a spine at the apex of the antennomere VI, it is quite likely that there is at most a spicule. In the photograph of the holotype of *E. scaramuzzai* it is possible to see that there is a spicule or a short spine. In males of *E. tuberculicolle* examined (Fig. 23-29), the apex of the antennomere V has at most a spicule. However, in all females of *E. tuberculicolle* examined (Fig. 1-22), there is always a short spine on the apex of antennomere VI, at most slightly shorter than in the females of *E. scaramuzzai* examined (Fig. 30-33); in fact, females of *E. tuberculicolle* and *E. scaramuzzai* have III-VI, III-VII (more rare) or, in a few specimens, VIII also with a spicule. Therefore, the difference is not reliable to separate the two species and, probably, is a variable feature even in males, although males of *E. scaramuzzai* apparently are rare;
5. The glabrous areas on elytra are variable in both species, may be identical and, probably, are associated, at least partially, with rubbing;
6. The “white” pubescent area on the elytra is very variable in size and shape and, color vary from white to yellowish in both species.

Therefore, all the features pointed out by Fisher (1951) to separate the two species are variable and not useful.

Fisher (1932) described the scape in *E. tuberculicolle* as being “robust, strongly clavate, subequal in length to the third joint.” However, the scape evidently is not clavate in the holotype and in males and females examined by us. In fact, it is slightly and gradually widened from base to apex. Fisher (1951) described the scape in *E. scaramuzzai* as being “robust, very strongly clavate, slightly longer than third joint.” At least in the holotype, the scape is clavate, actually, more subpiriform. Depending on the viewing angle, the scape in *E. scaramuzzai* may appear less pedunculate (Fig. 37-38) than it really is (Fig. 30, 33, 39). Therefore, it is possible that the type series of both species be a mixture of the two species. Although Fisher (1932, 1951) did not comment about the inclination of the outer spine of elytra, it is variable and may be straight, slightly inclined inward, slightly inclined sideward, or distinct inclined sideward. According to Fisher (1932, 1951) the antennae is “one and one-half times as long as the body” in males of *E. tuberculicolle*, “about one and one-half times as long as body” in males of *E. scaramuzzai*, and “slightly longer than the body” in females of both species. However, we examined a female of *E. tuberculicolle* with the antennae about 1.1 times longer than the body (Fig. 21-22). Furthermore, the length of the antennomere XI in females is variable and may be shorter, equal, or longer than antennomere X.

According to Zayas (1975) on *E. tuberculicolle* (translated): “They [specimens] resemble *E. scaramuzzae* Fish. [sic] in the drawing, so sometimes this similarity leads me to suspect that both forms may constitute the same species.” Zayas (1975) described the scape shape as being clavate (“en forma de basto”). However, Zayas (1975) did not report the scape shape in *E. scaramuzzai*. However,

as mentioned above, the scape is not clavate in *E. tuberculicolle*. In the collection of Zayas, examined by us, there are specimens of *E. tuberculicolle* identified as *E. scaramuzzai* but there are no specimens of *E. scaramuzzai* identified as *E. tuberculicolle*.

Devesa *et al.* (2015) redescribed *E. scaramuzzai* and *E. tuberculicolle*. However, the male and female of *E. scaramuzzai* used for the redescription were specimens of *E. tuberculicolle*. However, among the 11 specimens listed (excluding the holotype) in material examined, there are seven that actually correspond to *E. scaramuzzai*, six from Zayas’ collection, collected between 1949 and 1965, and one collected in the province of Granma. By examining all specimens available in the Cuban collections, we were able to identify nine specimens that correspond to *E. scaramuzzai* (only females) and 187 specimens to *E. tuberculicolle* (males and females).

Based on the above, we consider that *E. scaramuzzai* differs from *E. tuberculicolle* only by the shape of the scape: pedunculate (subpiriform) in the former, not pedunculate in the latter. We are providing a series of photographs allowing readers and researchers to verify the variations and the real difference between the two species.

The key to Cuban species of Elaphidiini by Devesa *et al.* (2015) is updated from the alternative of couplet “35” as follows:

35(33). Central area of the prosternum close to the prosternal process with dense pubescence	36
— Central area of the prosternum close to the prosternal process glabrous or almost so	37
36(35). Scape clavate (subpiriform) in both sexes (Fig. 30, 33, 39) ...	<i>E. scaramuzzai</i> Fisher, 1951
— Scape gradually widened from base to apex in both sexes (Fig. 34-36)	<i>E. tuberculicolle</i> Fisher, 1951
37(35). Elytra with isolated whitish pubescent maculae laterally	<i>E. irroratum irroratum</i> (Linnaeus, 1767)
— Elytra with abundant pubescence on entire lateral surface	38
38(37). Spine on apex of the antennomere III slightly arched	<i>E. cristalense</i> Zayas, 1975
— Spine on apex of the antennomere III straight	<i>E. cubae</i> Fisher, 1932

Material examined

Elaphidion tuberculicolle

(Fig. 41)

CUBA

Artemisa

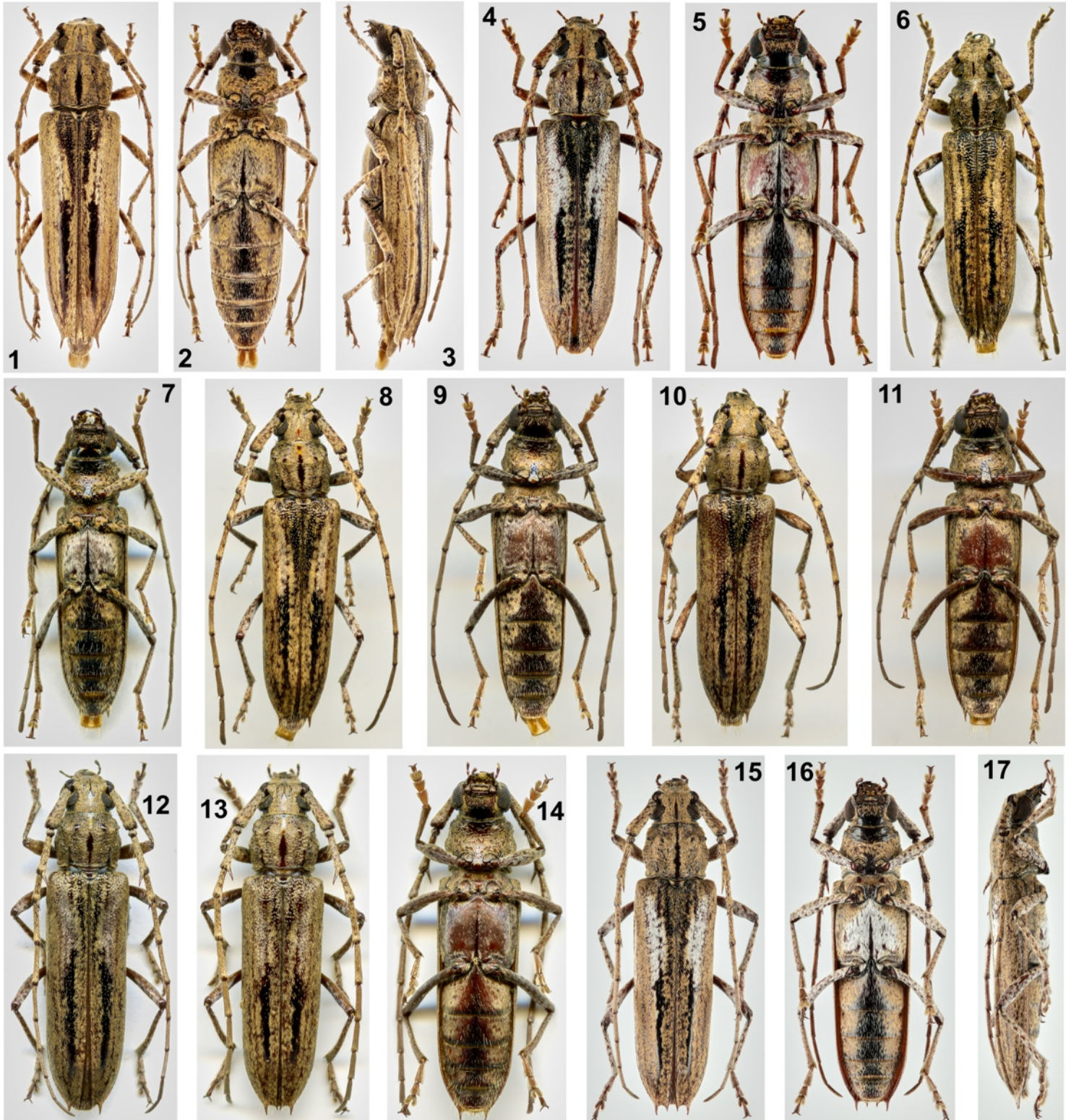
- Artemisa, Campismo “La Chorrea”, 22°50’13”N 82°53’30”W
1 ♀, E. Fonseca & G. León leg.

- Candelaria, Aspiro-Rangel, Sierra del Rosario, 22°42’10.2”N 83°10’7.8W
1 ♂, 14.IV.1934, A. Bierig leg. (MZSP).

- Loma “El Salón,” Sierra del Rosario, 22°49’52”N 82°57’24”W
1 ♀, 18.V.2012, E. Fonseca leg. (SDPC).

- Soroa, Sierra del Rosario, 22°48’00”N 83°01’00”W
1 ex., V.1963, F. Zayas, P. Alayo & I. García leg. (FZPC);
1 ♀, V.1963, F. Zayas, P. Alayo & I. García leg. (CZACC);
1 ex., IV.1964, F. Zayas leg. (FZPC).

- San Antonio de los Baños, Ojito de Agua, Bosque Ariguanabo, 22°54’51”N 81°59’49”W
1 ♂, 29.X.2003, S. Devesa, A. Barro, E. Fonseca & R. Nuñez leg. (SDPC).



Figures 1-17. *Elaphidion tuberculicolle* Fisher, 1932, habitus.

1-3. ♀ 1. 1. Dorsal. 2. Ventral. 3. Lateral. 4-5. ♀ 2. 4. Dorsal. 5. Ventral. 6-7. ♀ 3. 6. Dorsal. 7. Ventral. 8-9. ♀ 4. 8. Dorsal. 9. Ventral. 10-11. ♀ 5. 10. Dorsal. 11. Ventral. 12. ♀ 6, dorsal. 13-14. ♀ 7. 13. Dorsal. 14. Ventral. 15-17. ♀ 8. 15. Dorsal. 16. Ventral. 17. Lateral.

- San Cristóbal, Rancho Mundito, 22°44'00"N 83°14'00"W
1 ex., III.1963, F. Zayas leg. (FZPC).

- San Cristóbal, Sierra de Rangel, 22°45'00"N 83°11'00"W
4 ex., IV.1963, F. Zayas leg. (FZPC).

Camagüey

- Nuevitas, Monte California, Imías, 21°35'00"N 77°30'00"W
2 ex., VI.1959, F. Zayas leg. (FZPC).

- Nuevitas, Playa de Santa Lucía, 21°33'42" 77°02'27"W
1 ex., VI.1955, F. Zayas leg. (FZPC).

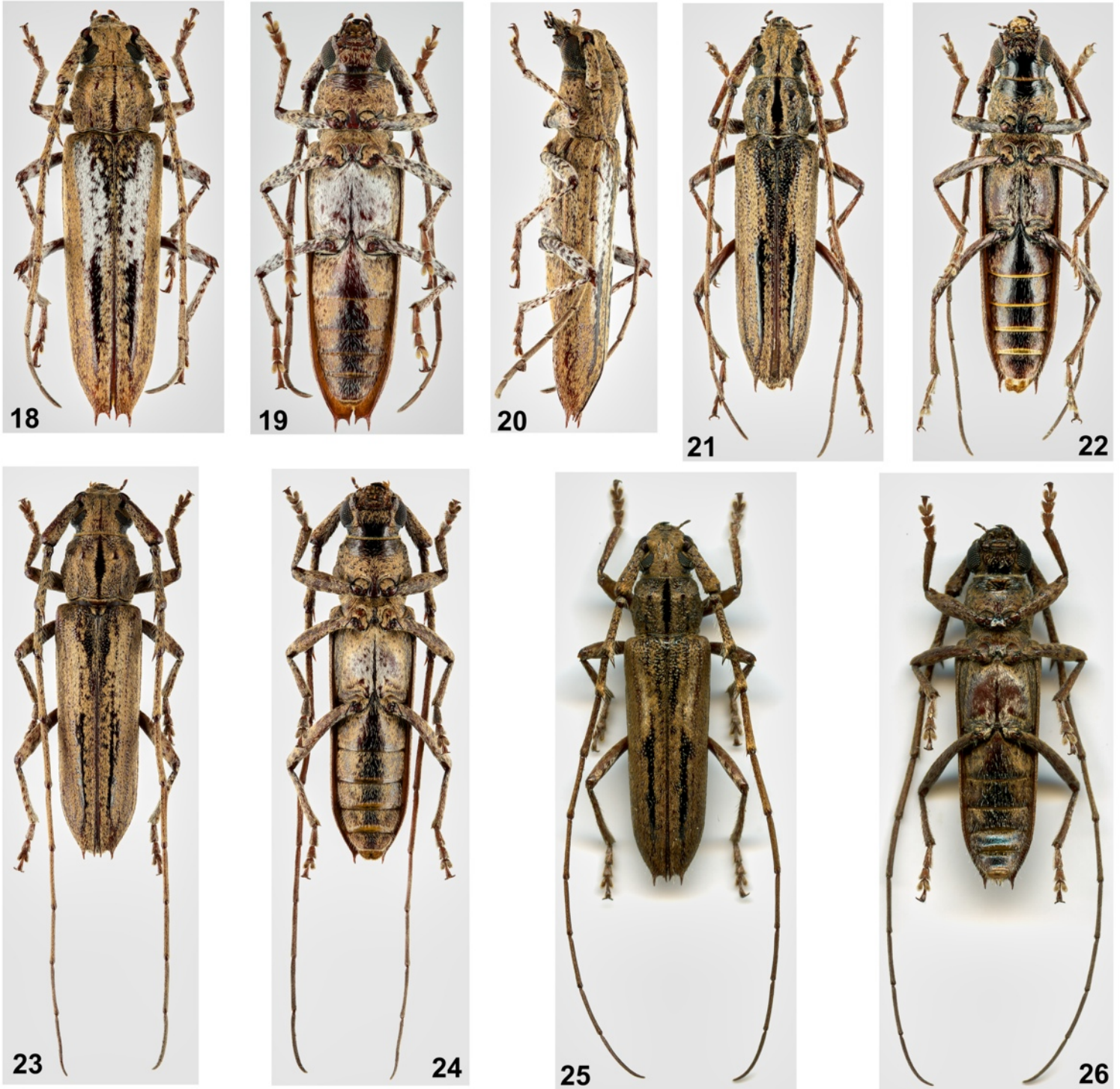
Cienfuegos

- Aguada de Pasajeros, Cayamas, 22°15'00"N 80°48'00"W
1 ex., 15.II.1917, F. Zayas leg. (FZPC).

- Cumanayagua, 22°08'58"N 80°12'7.8"W
1 ex., III.1953, F. Zayas leg. (FZPC).

Holguín

- Rafael Freire, Yuraguanal, 21°06'37.2"N 75°53'30"W
1 ♀, 15.IV.2006, S. Devesa leg. (SDPC).



Figures 18-26. *Elaphidion tuberculicolle* Fisher, 1932, habitus.

18-20. ♀ 9. 18. Dorsal. 19. Ventral. 20. Lateral. 21-22. ♀ 10. 21. Dorsal. 22. Ventral. 23-24. ♂ 1. 23. Dorsal. 24. Ventral. 25-26. ♂ 2. 25. Dorsal. 26. Ventral.

Matanzas

- Ciénaga de Zapata, Península de Zapata, 22°18'16"N 81°22'40"W
3 ex., III.1964, F. Zayas leg. (FZPC);
1 ♂, 1.IV.1965, F. Zayas leg. (FZPC).

- Ciénaga de Zapata, Playa Girón, 22°04'01"N 81°01'54"W
1 ex., 4.V.2018, S. Devesa leg. (SDPC);
1 ♀, 14.IV.1987, I. Fernández leg. (CZACC).

- Matanzas, Tres Ceibas de Clavellinas, 23°04'00"N 81°39'00"W
1 ♀, 29.V.2014, A. Barro & A. Serrano leg. (SDPC).

- Martí, San Blas (Península de Zapata), 22°08'16"N 80°58'21"W
4 ex., VI.1959, F. Zayas leg. (FZPC).

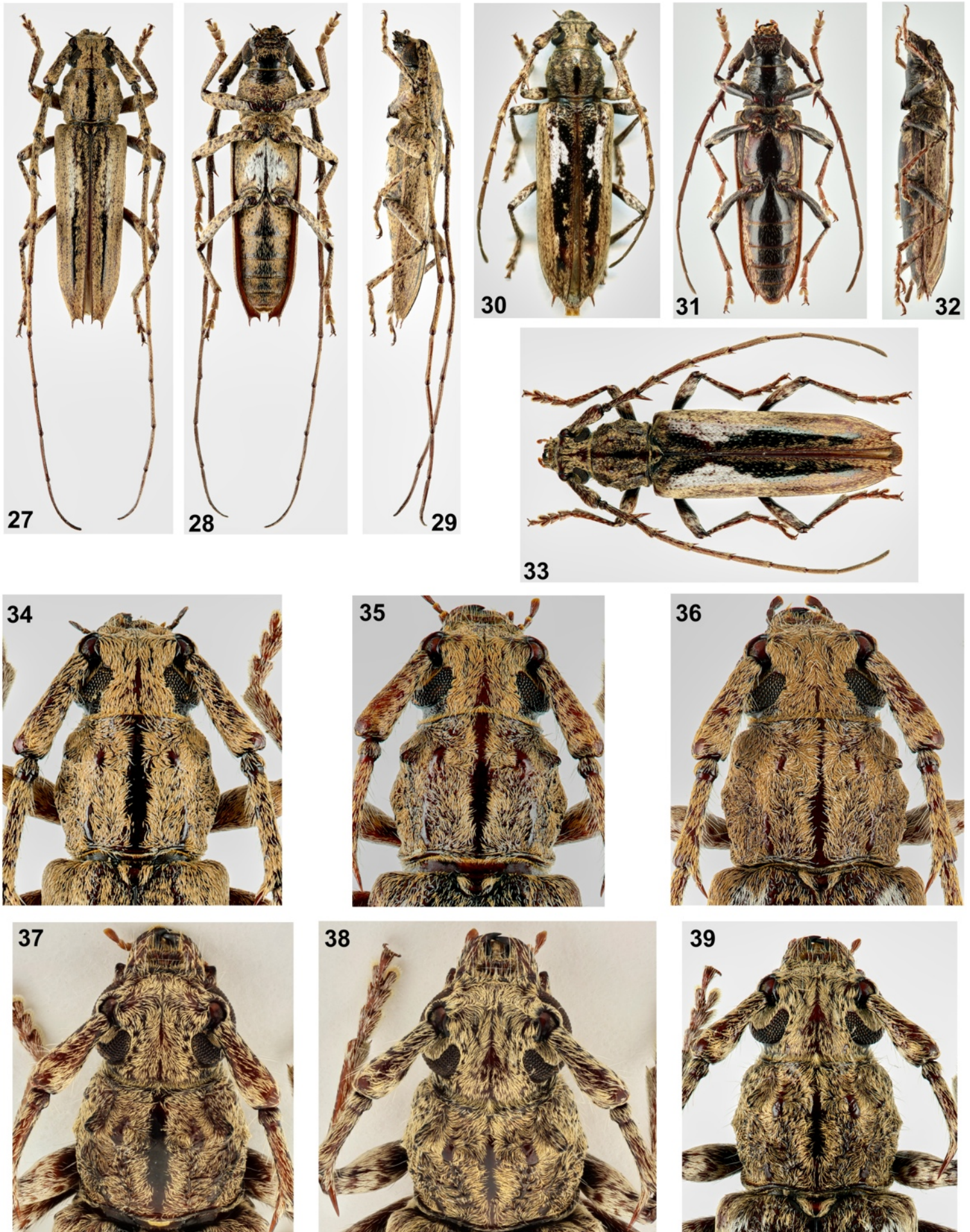
Pinar del Río

- Sandino, Cabo Corrientes, Guanahacabibes, 21°45'17.99"N 84°30'36.01"W
1 ex., 15.IV.2018, E. Fonseca leg. (SDPC);
1 ♀, 20.IV.2018, A. Barro & E. Fonseca leg. (SDPC).

- Sandino, María La Gorda, Guanahacabibe, 21°48'58.58"N 84°29'49"W
1 ex., 15.VI.1955, F. Zayas leg. (FZPC).

- Guane, Pedrera de Mendoza, 22°09'46"N 84°05'56"W
2 ex., V.1953, F. Zayas leg. (FZPC).

- Consolación del Norte, Sierra de Cajálbana, 22°47'25"N 83°26'44"W
1 ex., VI.1956, F. Zayas leg. (FZPC).



Figures 27-39. *Elaphidion* spp.

27-29. *Elaphidion tuberculicolle* Fisher, 1932, ♂ habitus 3. 27. Dorsal. 28. Ventral. 29. Lateral. 30-32. *Elaphidion scaramuzzai* Fisher, 1951, ♀ 1, habitus. 30. Dorsal. 31. Ventral. 32. Lateral. 33. *Elaphidion scaramuzzai*, ♀ 2, dorsal habitus. 34-39. Head, pronotum, and scape. 34. *E. tuberculicolle*, ♂ 3. 35. *E. tuberculicolle*, ♀ 2. 36. *E. tuberculicolle*, ♀ 7. 37. *E. scaramuzzai*, ♀ 1. 38-39. *E. scaramuzzai*, ♀ 2.

Sancti Spiritus

- Trinidad, Topes de Collantes (mirador), 21°51'49.52"N 80°01'12.86"W

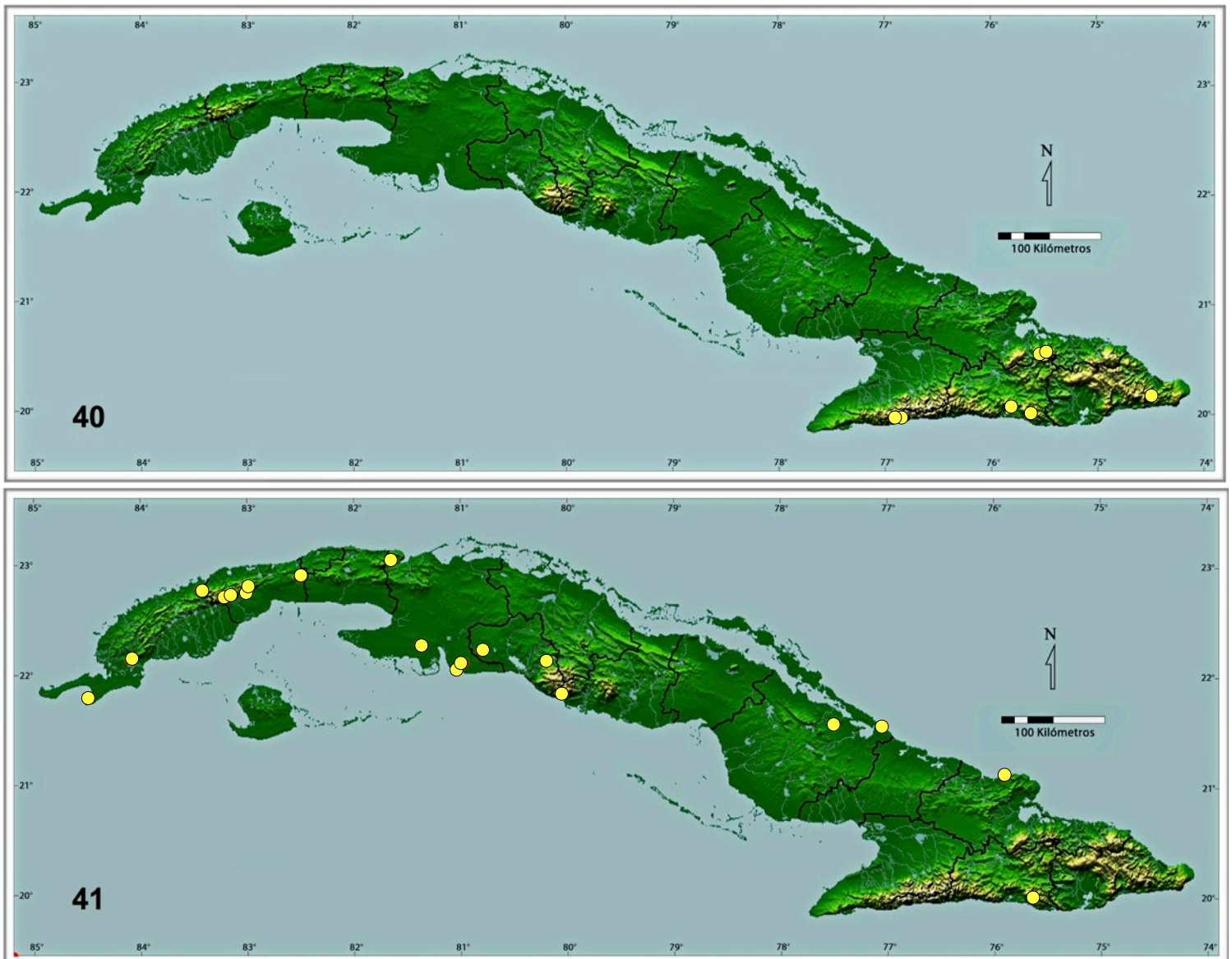
- 1 ♂, 1 ♀, 15.VII.2009, S. Devesa leg. (SDPC);
 1 ♀, 15.VIII.2009, S. Devesa leg. (SDPC);
 1 ♂, 4 ♀, 15.XI.2009, S. Devesa leg. (SDPC);
 1 ♂, 10 ♀, 15.XII.2009, S. Devesa leg. (SDPC);
 1 ♂, 3 ♀, 15.I.2010, S. Devesa leg. (SDPC);
 3 ♀, 15.III.2010, S. Devesa leg. (SDPC);
 3 ♂, 10 ♀, 15.V.2010, S. Devesa leg. (SDPC);
 8 ♂, 19 ♀, 15.VI.2010, S. Devesa leg. (SDPC);
 1 ex., 15.IX.2010, S. Devesa leg. (SDPC);
 1 ex., 15.X.2010, S. Devesa leg. (SDPC);
 3 ♂, 4 ♀, 15.XI.2010, S. Devesa leg. (SDPC);
 4 ♂, 2 ♀, 15.II.2011, S. Devesa leg. (SDPC);
 1 ♀, 15.III.2011, S. Devesa leg. (SDPC);
 1 ♂, 6 ♀, 17.V.2011, S. Devesa leg. (SDPC);
 2 ♂, 2 ♀, 15.VI.2011, S. Devesa leg. (SDPC);
 1 ♀, 15.X.2011, S. Devesa leg. (SDPC);
 1 ♀, 15.XI.2011, S. Devesa leg. (SDPC);
 1 ♀, 15.XII.2011, S. Devesa leg. (SDPC);

- 1 ♂, 1 ♀, 1.I.2012, S. Devesa leg. (SDPC);
 3 ♂, 6 ♀, 15.II.2012, S. Devesa leg. (SDPC);
 5 ♂, 10 ♀, 15.III.2012, S. Devesa leg. (SDPC);
 2 ♂, 2 ♀, 15.IV.2012, S. Devesa leg. (SDPC);
 1 ♂, 1 ♀, 15.V.2012, S. Devesa leg. (SDPC);
 1 ♂, 3 ♀, 1.VI.2012, S. Devesa leg. (SDPC);
 1 ♂, 15.VIII.2012, S. Devesa leg. (SDPC).
 1 ♂, 15.X.2012, S. Devesa leg. (SDPC);
 1 ♂, 3 ♀, 15.XII.2012, S. Devesa leg. (SDPC);
 1 ♂, 2 ♀, 15.I.2013, S. Devesa leg. (SDPC);
 1 ♂, 3 ♀, 15.II.2013, S. Devesa leg. (SDPC);
 1 ♀, 15.III.2013, S. Devesa leg. (SDPC);
 1 ♀, 15.IV.2013, S. Devesa leg. (SDPC);
 2 ♂, 2 ♀, 15.V.2013, S. Devesa leg. (SDPC);
 1 ♂, 2 ♀, 15.VI.2013, S. Devesa leg. (SDPC);
 1 ♀, 15.VII.2013, S. Devesa leg. (SDPC).

Santiago de Cuba

- Santiago de Cuba, La Gran Piedra, 20°0'34"N 75°37'38"W

- 1 ♀, 26.VI.1998, Y. Suárez leg. (CZCTR).



Figures 40-41. Distribution maps.

40. *Elaphidion scaramuzzai* Fisher, 1951. **41.** *Elaphidion tuberculicolle* Fisher, 1932.

Elaphidion scaramuzzai

(Fig. 40)

CUBA**Guantánamo**

- Baracoa, ruta de Baracoa a Imías, PK 26,4, 420 m.s.n.m., 19°31'07"N 76°22'37"W

1 ♀, 23.VII.1996, J. Hexaire leg. (JTTC).

Granma

- Bartolomé Masó, Aguada de Joaquín, Sierra Maestra, 19°59'22"N 76°50'09"W

1 ♀, 27.I.2007, E. Fonseca leg. (SDPC).

Holguín

- Mayarí, Sierra del Cristal, 20°33'00"N 75°31'00"W

1 ♀, 1.VI.1956, F. Zayas leg. (FZPC);

1 ♀, 1.VI.1959, F. Zayas leg. (FZPC).

- Mayarí, La Zolita, Sierra del Cristal, 20°34'00"N 75°28'00"W

1 ♀, 18.II.2010, R. Nuñez & O. Madruga leg. (SDPC).

Santiago de Cuba

- Santiago de Cuba, Cuabitas, 20°03'48"N 75°48'45"W

1 ♀, 1.I.1949, F. Zayas leg. (FZPC).

- Santiago de Cuba, La Gran Piedra, 20°00'34"N 75°37'38"W

1 ♀, 1.VI.1954, F. Zayas leg. (FZPC);

1 ♀, 9.III.2008, R. Nuñez & O. Madruga leg. (SDPC).

- Guamá, Pico Turquino, Sierra Maestra, 19°59'22"N 76°50'09"W

1 ♀, 1.VI.1954, F. Zayas leg. (FZPC).

Acknowledgments

We express our sincere thanks to Larry G. Bezark (USA) for corrections and suggestions for improving the work. Thanks also to Julien Touroult (France), for sending photographs and data of his specimens of Cuban *Elaphidion*.

References

Devesa S. & Grillo H., 2016. – Descripción de una nueva especie de *Elaphidion* Audinet-Serville, 1834 de Cuba. (Coleoptera, Cerambycidae, Cerambycinae, Elaphidiini). *Les Cahiers Magellanes* (N.S.), 24: 38-44.

Devesa S., Fonseca E. & Barro A., 2015. – *Longicornios de Cuba (Coleoptera: Cerambycidae). Parandrinae, Prioninae, Spondylidinae, Cerambycinae*. Vol. 1. Greta Editores, Lleida, España, 353 pp.

Devesa S., Barro A. & Fonseca E., 2019. – *Longicornios de Cuba (Coleoptera: Cerambycidae). Lamiinae*. Vol. 2. Greta editores, Lleida, España, 337 pp.

Fishe W.S., 1932. – New West Indian cerambycid beetles. *Proceedings of the United States National Museum*, 80(22): 1-93.

Fisher W.S., 1951. – A new species of *Elaphidion* (family Cerambycidae) from Cuba. *Memorias de la Sociedad Cubana de Historia Natural*, 20(2): 77-79.

Lingafelter S.W. & Ivie M.A., 2005. – Synonymies and transfers in Elaphidiini mostly relating to the genus *Elaphidion* Audinet-Serville (Coleoptera: Cerambycidae). *Journal of the New York Entomological Society*, 112(2-3): 205-211.

Monné M.A. & Nearn E.H., 2023. – Catalogue of the Cerambycidae (Coleoptera) of Canada and United States of America. Part III. Subfamily Cerambycinae. Available from: <https://cerambycids.com/catalog/> (Last accessed 21 April 2023.)

Tavakilian G.L. & Chevillotte H., 2022. – Titan: base de données internationales sur les Cerambycidae ou Longicornes. Available from: <http://titan.gbif.fr/> (Last accessed 21 April 2023.)

Zayas F., 1975. – *Revisión de la familia Cerambycidae* (Coleoptera, Phytophagoidea). Academia de Ciencias de Cuba, Habana, 443 pp.

Author contributions ¹

Project initiator. – SD & AS

Scientific coordinator. – AS

Publisher Correspondence. – SD

Writing the article. – AS & SD

Article proofreading. – SD & AS

Bibliographic work. – SD & AS

Material study. – SD

Author of the figures. – SD

Collectors. – SD

¹ SD= Sergio Devesa - AS=Antonio Santos-Silva

Résumé

Devesa S. & Santos-Silva A., 2023. – A propos d'*Elaphidion tuberculicolle* Fisher, 1932 et d'*Elaphidion scaramuzzai* Fisher, 1951 (Coleoptera, Cerambycidae). *Faunitaxys*, 11(33): 1 – 7.

Les différences entre *Elaphidion tuberculicolle* Fisher, 1932 et *E. scaramuzzai* Fisher, 1951 sont rapportées, et les différences signalées dans la description originale de ce dernier sont commentées. La clé de détermination des espèces des Elaphidiini de Cuba par Devesa *et al.* (2015) est partiellement modifiée.

Mots-clés. – Cerambycidae, Lamiinae, Longhorned woodboring beetles, *Elaphidion*, taxonomy, Neotropical region.

Faunitaxys

Volume 11, Numéro 33, Mai 2023

SOMMAIRE

A propos d'*Elaphidion tuberculicolle* Fisher, 1932 et d'*Elaphidion scaramuzzai* Fisher, 1951
(Coleoptera, Cerambycidae)

Sergio Devesa & Antonio Santos-Silva 1 – 7

CONTENTS

On *Elaphidion tuberculicolle* Fisher, 1932 and *Elaphidion scaramuzzai* Fisher, 1951
(Coleoptera, Cerambycidae)

Sergio Devesa & Antonio Santos-Silva 1 – 7



Illustration de la couverture :

Pluvisilva Sierra Maestra (Cuba).

Crédits photos:

Sergio Devesa: Fig. 1-41 & couverture.