



HAL
open science

Macrophages and stem/progenitor cells interplay in adipose tissue and skeletal muscle: a review

Malgorzata Kloc, Ahmed Uosef, Henry V Ubelaker, Jacek Z. Kubiak, Rafik M. Ghobrial

► To cite this version:

Malgorzata Kloc, Ahmed Uosef, Henry V Ubelaker, Jacek Z. Kubiak, Rafik M. Ghobrial. Macrophages and stem/progenitor cells interplay in adipose tissue and skeletal muscle: a review. *Stem Cell Investigation*, 2023, 10, pp.9. 10.21037/sci-2023-009 . hal-04090273

HAL Id: hal-04090273

<https://hal.science/hal-04090273>

Submitted on 5 May 2023

HAL is a multi-disciplinary open access archive for the deposit and dissemination of scientific research documents, whether they are published or not. The documents may come from teaching and research institutions in France or abroad, or from public or private research centers.

L'archive ouverte pluridisciplinaire **HAL**, est destinée au dépôt et à la diffusion de documents scientifiques de niveau recherche, publiés ou non, émanant des établissements d'enseignement et de recherche français ou étrangers, des laboratoires publics ou privés.



Distributed under a Creative Commons Attribution - NonCommercial - NoDerivatives 4.0 International License



Macrophages and stem/progenitor cells interplay in adipose tissue and skeletal muscle: a review

Malgorzata Kloc^{1,2,3}, Ahmed Uosef^{1,2}, Henry V. Ubelaker^{1,2}, Jacek Z. Kubiak^{4,5}, Rafik M. Ghobrial^{1,2}

¹Transplant Immunology, The Houston Methodist Research Institute, Houston, TX, USA; ²Department of Surgery, The Houston Methodist Hospital, Houston, TX, USA; ³Department of Genetics, MD Anderson Cancer Center, The University of Texas, Houston, TX, USA; ⁴Laboratory of Molecular Oncology and Innovative Therapies, Military Institute of Medicine National Research Institute (WIM-PIB), Warsaw, Poland; ⁵Dynamics and Mechanics of Epithelia Group, Faculty of Medicine, Institute of Genetics and Development of Rennes, University of Rennes, CNRS, UMR 6290, Rennes, France

Contributions: (I) Conception and design: M Kloc; (II) Administrative support: None; (III) Provision of study materials or patients: None; (IV) Collection and assembly of data: JZ Kubiak, RM Ghobrial, HV Ubelaker, A Uosef; (V) Data analysis and interpretation: All authors; (VI) Manuscript writing: All authors; (VII) Final approval of manuscript: All authors.

Correspondence to: Malgorzata Kloc. Transplant Immunology, The Houston Methodist Research Institute, Houston, TX, USA.

Email: mkloc@houstonmethodist.org.

Abstract: Like all immune cells, macrophages do not act autonomously but in unison with other immune cells, surrounding tissues, and the niche they occupy. Constant exchange of information between cellular and noncellular participants within a tissue allows for preserving homeostasis and defining responses in a pathologic environment. Although molecular mechanisms and pathways involved in reciprocal signaling between macrophages and other immune cells have been known for decades, much less is known about interactions between macrophages and stem/progenitor cells. Based on the time when stem cells form, there are two stem cell types: embryonic stem cells existing only in an early embryo, which are pluripotent and can differentiate into any cell type present in an adult, and somatic (adult) stem cells formed in fetus and persisting for whole adult life. Tissues and organs have their own (tissue-specific and organ-specific) adult stem cells, which serve as a reserve for tissue homeostasis and regeneration after injury. It is still uncertain whether organ- and tissue-specific stem cells are actual stem cells or just progenitor cells. The important question is how stem/progenitor cells can sculpt macrophage phenotype and functions. Even less is known if or how macrophages can shape stem/progenitor cell functions, their divisions, and fate. We describe here examples from recent studies of how stem/progenitor cells can affect macrophages and how macrophages can influence stem/progenitor cell properties, functions, and destiny.

Keywords: Macrophage; stem cell; asymmetric division; immortal DNA

Received: 04 February 2023; Accepted: 30 March 2023; Published online: 13 April 2023.

doi: 10.21037/sci-2023-009

View this article at: <https://dx.doi.org/10.21037/sci-2023-009>

Introduction

Cell-to-cell communications and interactions may occur through cell-cell contact, secretion and receiving soluble factors, extracellular vesicles (exosomes/microvesicles), and organelle transfer (1-3). Intercellular signaling is categorized into paracrine, autocrine, endocrine, and direct contact signaling based on the distance traveled by a signal to reach its target. In paracrine signaling, cells

in close vicinity release the signaling molecule (ligand), which binds the appropriate receptor on the surface of the acceptor cell. Autocrine signaling occurs when the signal released from the cell binds to the receptor of the very same cell. Endocrine signaling allows the transmission of signaling molecules (hormones) over long distances using body fluids and the circulatory system. In direct contact signaling, small molecules and ions diffuse through cell

junctions connecting neighboring cells. Another mechanism of intercellular communication occurs via exosomes and/or tunneling nanotubes (TNTs), long cellular processes which temporarily connect partner cells and allow an exchange of organelles (2,4-8). Although potentially all these intercellular communication mechanisms can be used for interaction between macrophages and stem cells, usually, under given circumstances and depending on a particular need and microenvironment, some are preferred over others. In this review we describe the examples of macrophage-stem cell crosstalk in health and disease and indicate how the intercellular communication routes and components, can be used therapeutically.

Types of stem and progenitor cells

Stem cells have two basic properties: self-renewal and the ability to differentiate into different cell types. Stem cells can divide asymmetrically or symmetrically (9,10). To achieve self-renewal, each asymmetric division of stem cell creates two daughter cells of different fates; one remains an undifferentiated stem cell, and another differentiates into a specialized cell. The symmetric division produces two identical stem cells, or two cells which enter a differentiation pathway. In contrast to progenitor cells, which also self-renew but only for a short time, stem cells self-renew throughout a lifetime of an organism. Depending on the applied criterium stem cells are divided into several categories. Based on the ability to develop into different cell types, stem cells are categorized into totipotent (can form all embryonic and adult cell lineages) (11), pluripotent (can differentiate into all cell types in an adult) (12), multipotent (give rise to multiple cell types within a given cell lineage) (13), and unipotent, (can self-renew but give rise to only one cell type) (14,15). Based on the time when stem cells form, there are two stem cell types: embryonic stem cells existing only in an early embryo, which are pluripotent and can differentiate into any cell type present in an adult, and somatic (adult) stem cells formed in fetus and persisting for whole adult life (16-19). Tissues and organs have their own (tissue-specific and organ-specific) cache of adult stem cells, which serve as a reserve for tissue homeostasis and regeneration after injury (20). Depending on location, adult stem cells are divided into mesenchymal, epithelial, skin, neural, and blood (hematopoietic) stem cells, plus resident stem cells characteristic of a given organ. For example, resident liver stem cells are in fetal and neonatal ductal plates, and intrahepatic biliary tree of an adult (21). Resident pancreatic

stem cells are in pancreatic ducts (22), and resident neural stem cells are in the hippocampus, basal ganglia of cerebral hemispheres, neocortex, and spinal cord (23). Resident stem cells of skeletal muscle are the subpopulation of the satellite cells located between the plasma membrane (sarcolemma, myolemma) and basement membrane of muscle fibers. It is still disputed whether organ- and tissue-specific stem cells are actual stem cells or just progenitor cells.

A somewhat distinct category is mesenchymal stem cells (MSC, stromal cells) situated within connective tissue surrounding different organs (24). Interestingly, the properties of MSCs differ depending on their location within body. In addition to these naturally occurring stem or progenitor cells, there are also artificially created (induced) pluripotent stem cells (iPSCs) (25). Those are various types of somatic cells reprogrammed *in vitro* into an embryonic-like state, which can differentiate into neurons, skin, blood, and liver cells, and precursors of egg, sperm, and bone (26-28).

Types of macrophages

Macrophages are immune cells of an innate branch of the immune system. Key activities of macrophages are phagocytosis of pathogens, dead cells, and debris, and signaling and stimulation of other immune cells. The main criteria for categorizing macrophages are their functional program and location within the body and tissues.

Although the exact functions of macrophages will differ depending on location and task at hand, based on their functional program, macrophages are divided into pro-inflammatory [M1, classically activated (AM)], mainly involved in anti-pathogen and anti-tumor responses, and clearing debris, and the anti-inflammatory [M2a-d, alternatively activated (AAM)] macrophages, responsible for tissue repair and regeneration, angiogenesis, and parasite containment (29,30,31). M1 are induced by T helper cells type 1 (TH1) cytokines, such as interferon gamma (IFN γ), interleukin (IL)-2, IL-10, and tumor necrosis factor (TNF)- α/β , and produce proinflammatory cytokines, reactive oxygen species (ROS), and inducible nitric oxide synthase (iNOS). M2a are induced by TH2 cytokines such as IL-4 and secrete a chitinase-like protein (YM1), acidic mammalian chitinase (AMCase), and arginase 1 (Arg1). M2b [regulatory macrophages (Mregs)] are induced by a combination of immune complexes (antibodies bound to different antigens) and Toll-like receptor (TLR) ligands. Mregs secrete large amounts of IL-10 and small amounts of IL-12, inhibit proliferation of activated T cells, and,

thus, have immunosuppressive role in inflammation and transplantation, and promote cancer progression (32,33). M2c (inactivated macrophages) are induced by anti-inflammatory factors, such as glucocorticoids, IL-10, and TGF- β . They produce IL-10, TGF- β , chemokine (C-C motif) ligand 16 (CCL16), and chemokine (C-C motif) ligand 18 (CCL18), and phagocytose apoptotic cells. M2d are pro-angiogenic; they are induced by IL-6 and A2 adenosine receptor agonist (A2R), and produce vascular endothelial growth factor (VEGF), IL-10, and TGF- β (34,35). An additional category recently identified is memory macrophages, which can remember antigens they had contact with and mount faster and enhanced response during subsequent encounter. Until recently, such memory ability was believed to be restricted to adaptive immune cells (36,37). Based on their location, macrophages are differently named. For example, bone macrophages are called osteal macrophages (38); alveolar macrophages are in the lungs, microglial cells in the brain, Langerhans cells (LC) in the skin, Kupffer cells in the liver, histiocytes in connective tissue, etc. (39). A separate category is tumor-associated macrophages (TAMs), which populate many types of tumors and, depending on the cancer type and tumor environment, fight or promote cancer development and metastasis (40-43). Another distinct category, described as a mononuclear phagocytic system (MPS), includes all types of macrophages and their bone marrow (BM) progenitors (44).

Origin of macrophages

During mammalian embryogenesis, macrophages develop directly (without a monocytic progenitor) from the ectoderm of the yolk sac (45,46). Subsequently, the fetal liver acquires hematopoietic progenitors from the yolk sac and hematogenic endothelium of embryonic mesoderm (aorta-gonad-mesonephros region). From this point on, the fetal liver produces circulating macrophage precursors (monocytes) (47). Subsequently, hematopoiesis switches from fetal liver to thymus and BM, which become a main source of all blood cell lineages, including circulating monocytes (46). However, most types of tissue-resident macrophages in adults do not derive from circulating monocytes but originate from the yolk sac or fetal liver and colonize tissues/organs during embryonic and fetal development. For example, microglia derive mainly from yolk sac progenitors; Langerhans cells have chimeric origin from the yolk sac and fetal liver, while kidney and lung macrophages derive from the yolk sac and hematopoietic

precursors (48-50). These resident macrophages self-maintain locally throughout adult life without (or minimal) input from circulating monocytes. In contrast, during disease and inflammation, most macrophages infiltrating tissues/organs derive from circulating monocytes.

Macrophage interactions with stem/progenitor cells

Macrophages affect stem cells already during embryogenesis when they regulate hematopoietic stem cells (HSCs) and hematopoietic stem progenitor cells (HSPCs) homing and retention in BM or extramedullary hematopoietic sites (e.g., spleen). Loss- and gain-of-function experiments in zebrafish (a vertebrate hematopoietic model) showed that vascular cell adhesion molecule-1 (VCAM-1)⁺ macrophages (named the usher cells) located in the vicinity of HSPCs are necessary for their retention and homing to the vascular niche (46,51). VCAM-1, through interaction with $\alpha 4\beta 1$ integrins, is necessary for HSC rolling and adhesion to blood vessel endothelium (52). Another study showed that VCAM-1⁺ macrophages, which reside in the red pulp of the spleen, control HSCs retention in the spleen. Inhibition of VCAM-1 or depletion of splenic macrophages releases HSCs from the spleen to peripheral blood (46,53).

Among many examples of the interplay between macrophages and stem or progenitor cells in the adult organism, best described are those in adipose tissue and muscle.

Adipose tissue stem cells and macrophages

Adipose tissue (fat or fatty tissue) is composed of fat cells (adipocytes), stromal cells, endothelial cells, and infiltrating leukocytes and macrophages called adipose tissue macrophages (ATMs). Adipose tissue serves as energy storage, regulates metabolism through endocrine signaling, and cushions organs. There are three main types of adipocytes: white, beige, and brown, which differ in abundance, phenotype, and function (54). The most abundant are white adipocytes [white adipocyte tissue (WAT)], which contain a single, large lipid droplet and a reduced number of cellular organelles. White fat is located under the skin, around internal organs, and inside the bones (BM fat). White adipocytes store energy and act as endocrine and secretory organs. They secrete molecules regulating lipid metabolism, vascular homeostasis, and inflammation, such as leptin (food intake/energy use

balance), angiotensinogen (blood pressure and fluid balance), adipin (increases insulin secretion), acylation-stimulating protein (triglyceride synthesis and storage, fatty-acid esterification, increases glucose uptake), adiponectin (lipid metabolism, glucose levels, and insulin sensitivity), retinol-binding protein (transport of retinol), TNF- α (an inflammatory cytokine), IL-6 (anti-inflammatory cytokine), plasminogen activator inhibitor-1, fasting-induced adipose factor (lipid and glucose metabolism, angiogenesis), a fibrinogen-angiopoietin-related protein (lipid and glucose metabolism, insulin sensitivity), metallothionein (metal binding and stress response protein), and resistin (induce insulin resistance) (55,56). Beige adipocytes have multiple lipid droplets and many mitochondria. They are scattered among white adipocytes and generate heat under cold exposure. Brown adipocytes [brown adipocyte tissue (BAT)] exist only in mammals, and their main function is thermogenesis, i.e., the transfer of energy from food into heat. They have many lipid droplets and iron-containing mitochondria, which give them a characteristic dark color. In an adult human, brown fat is in the neck, chest, around kidneys, adrenal glands, and aorta.

Adipose stromal cells include adipose progenitor cells (APCs), fibro-inflammatory precursors, and cells supporting the vasculature. Because APCs are multipotent (can differentiate into many cell lineages including adipocytes, chondrocytes, and osteoblasts), they were renamed into adipose stem/stromal cells (ADSCs). ADSCs differ from MSCs, which are mainly committed to osteoblastic and chondrogenic fates. ADSCs secrete various cytokines and growth factors and have immunomodulatory functions (57,58). In mice there are two main types of self-renewing APCs in the WAT: CD24⁺ and CD24⁻, which give rise to several subpopulations of committed preadipocytes that differentiate into white or beige adipocytes (59).

ATMs originate from the yolk sack, self-proliferation *in situ* driven by monocyte chemoattractant protein 1 (MCP-1), and BM precursors (60). They regulate adipose tissue homeostasis, lipid and energy metabolism, mitochondrial function, and inflammatory processes in obesity. Recent single-cell mass cytometry and genetic lineage tracking studies of non-obese mice identified ten functionally different subsets of resident ATMs within the WAT (61). Eight subsets consisted of mannose receptor CD206⁺ macrophages, which differed in the expression of TIM4 (T-cell immunoglobulin and mucin domain containing protein 4), scavenger receptor CD163, and major histocompatibility complex major histocompatibility

complex II (MHC II), and two subsets of CD206⁻ macrophages. These studies also showed that the TIM4⁺CD163⁺ subset has an embryonic origin, while TIM4⁺CD163⁻, TIM4⁻CD163⁺ and CD206⁻ subsets derive from the BM precursors. All these subsets of macrophages are involved in phagocytosis, endocytosis, and antigen processing. High-fat diet induces infiltration of CD206⁻ macrophages and downregulates MHC II in TIM4⁺ macrophages (61). In lean humans and mice, macrophages constitute around 5% of adipose tissue but dramatically increase, up to 50%, in obese individuals. In addition to the expansion of ATM number, there is also a shift in macrophage phenotype from M2 to M1 macrophages, and shift from the CD206, IL-10, Mrc2, Ym1/Chi3L3, and Mgl1/2 expression to the IL-6, Nos2, and CD11c expression. This phenotypic switch of ATMs promotes the pro-inflammatory environment in obese adipose tissue, which in turn, affects insulin sensitivity (62). Also, the location of macrophages changes; in lean individuals, macrophages are dispersed among adipocytes, while in obesity, they are mainly located within crown-like structures (CLS) (62,63). CLS are formed by macrophages surrounding dead adipocytes and engulfing cell debris and lipids (*Figure 1*). Studies showed that in obesity, saturated fatty acids derived from adipocytes activate TLR4 signaling pathway and macrophage-inducible Ca²⁺-dependent lectin receptor (Mincle) of cell death response, inducing inflammatory responses (63). Although in sustained obesity, macrophages in adipose tissue are the main source of inflammatory factors such as MCP-1 that promotes chronic inflammation, the question was which cells are the source of initial inflammation occurring during the first few days of high-fat diet and long before massive infiltration of macrophages. Studies addressing this question showed that adipocyte progenitor cells (AdPCs) are the initial source of MCP-1 that mediates chronic inflammation. They showed that one week of a high-fat diet increases proliferation, via transcription factor inhibitor of differentiation 3 (Id3) of AdPCs and MCP-1 production. This, in turn, recruits additional macrophages to adipose tissue (*Figure 1*) (64).

Little is known how macrophages regulate preadipocyte maintenance, survival, proliferation, and the exit from the cell cycle that is a prerequisite for differentiation into adipocyte. M2 macrophages activated by IL-4 promote preadipocyte survival through activation of the phosphoinositide 3-kinase (PI3K)-Akt and mitogen-activated protein kinase kinase (MEK)-extracellular signal-regulated kinase 1/2 (ERK1/2) pathways (*Figure 2*)

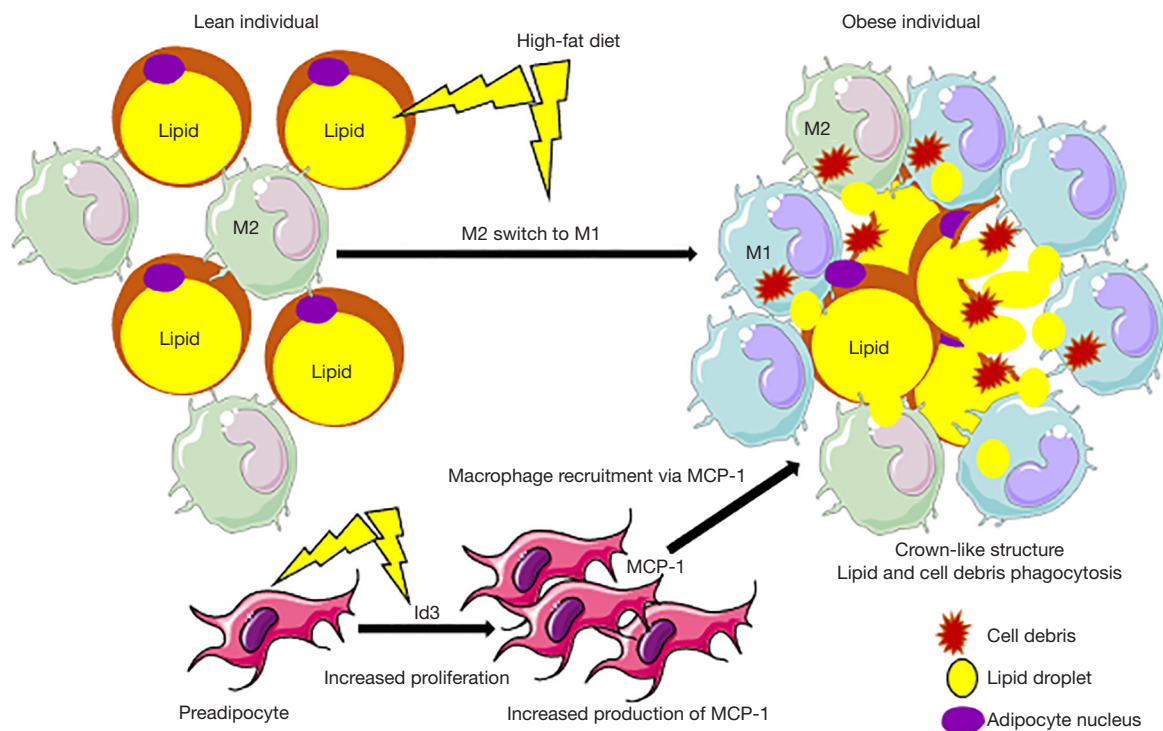


Figure 1 Interactions between macrophages and preadipocytes/adipocytes in the adipose tissue. In the lean individual, the M2 (anti-inflammatory) macrophages are dispersed between the adipocytes. They keep adipose tissue homeostasis. The influx of lipids in a high-fat diet induces a switch of macrophages phenotype from M2 to the pro-inflammatory M1. In high-fat condition, macrophages form the crown-like structure, which surrounds adipocytes. Macrophages phagocytose dead cells and debris. A high-fat diet also induces the proliferation of pre-adipocytes through the activation of the Id3 factor and activates the synthesis of MCP-1. MCP-1 mediates chronic inflammation and recruits additional monocytes/macrophages to the adipose tissue. Id3, inhibitor of differentiation 3; MCP-1, monocyte chemoattractant protein-1.

(59,65,66). Human and mouse M1 macrophages inhibit the expression of cell cycle proteins [cyclin A, cyclin-dependent kinase 2 (CDK2)] in preadipocytes, which, in turn, inhibits their clonal expansion and differentiation (67,68) (Figure 2). Additionally, $\text{TNF-}\alpha$, IL-6, IL-1 β , and nitric oxide (NO) produced by M1 macrophages push preadipocytes toward fibrotic phenotype (Figure 2) (59,69,70).

Recent studies showed that *in vitro*, differentiation of adipose tissue-derived mesenchymal stem/stromal cells into adipocytes was inhibited by macrophage-derived supernatants, especially M1-derived supernatant. The inhibitory effect of M1 macrophages depended on $\text{TNF-}\alpha$ and IL-1 β , and antibodies blocking these cytokines reduced inhibition (71).

Skeletal muscle stem cells and macrophages

Skeletal muscles consist of long contractile multinuclear

muscle cells (myofibers). Between the cell membrane (sarcolemma, myolemma) and extracellular matrix (basement membrane, basal lamina) of muscle fibers, there is a population of mononuclear myogenic cells called satellite cells. During embryogenesis, the fusion of mesoderm-derived progenitors (myoblasts) creates myofibers. In the adult, fusion is only sporadic to replace fibers dying from use, injury, or hypertrophic muscle growth (72-74). Under homeostatic conditions, satellite cells are quiescent, but after injury, they proliferate and differentiate into new muscle and satellite cells. Clonal analysis showed that satellite cells differ in function. Some proliferate extensively and give rise to differentiated and self-renewed progeny, while others have limited divisions before differentiation (75). Within a population of satellite cells, there is a small subpopulation of satellite stem cells. When activated by trauma or injury, these cells divide both symmetrically and

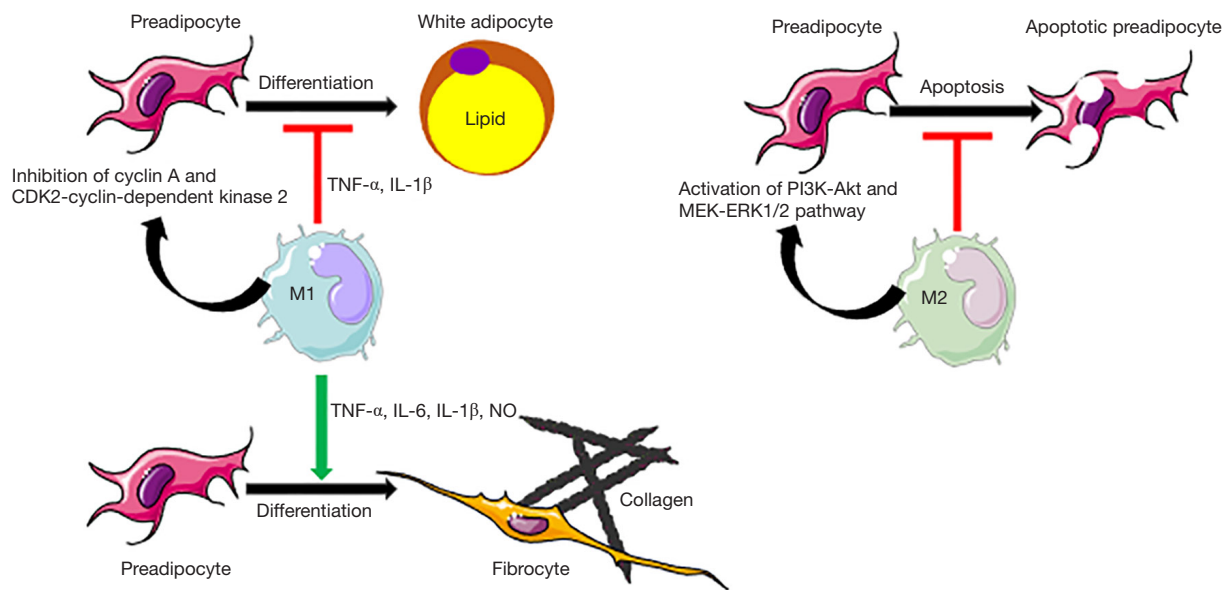


Figure 2 Effect of macrophages on preadipocyte fate. M1 macrophages inhibit the expression of the cell cycle proteins (cyclin A, CDK2) in preadipocytes, which, in turn, inhibits their clonal expansion and differentiation. TNF- α and IL-1 β produced by M1 macrophages inhibit preadipocyte differentiation, and TNF- α , IL-6, IL-1 β , and NO push preadipocyte differentiation toward the fibrotic phenotype. The M2 macrophages inhibit preadipocyte apoptosis and promote their survival by activating the PI3K-Akt and MEK-ERK1/2 pathways. CDK2, cyclin-dependent kinase 2; ERK1/2, extracellular signal-regulated kinase 1/2; IL, interleukin; MEK, mitogen-activated protein kinase kinase; NO, nitric oxide; PI3K, phosphoinositide 3-kinase; TNF, tumor necrosis factor.

asymmetrically. Symmetrical divisions expand their number, while asymmetric divisions produce satellite stem cells and myogenic progenitors. Myogenic progenitors proliferate and differentiate into new muscle fibers by fusing with themselves or with the existing fibers (76-78). One must be aware that the cells that repair skeletal muscle are not the satellite stem cells (which do not fuse) but the myogenically committed daughters of those stem cells. The satellite stem cell population must asymmetrically divide and differentiate into myogenically committed cells, expressing myogenin and myoD, which are no longer satellite stem cells but the myogenic progeny. These myogenically committed cells proliferate, differentiate, migrate, and only after they exit the cell cycle, they turn on a required machinery for fusion. The universal marker for satellite cells from various animal species (human, monkey, pig, mouse, chick, frog, salamander, and zebrafish) is the paired domain transcription factor paired box 7 (Pax7). While myogenic progenitors also express myogenic regulatory factor myogenic factor 5 (Myf5), the Myf5 negative satellite cells represent a stem cell population (78,79). Quiescent satellite cells express Pax7 and forehead box (FOXO) transcription

factor (79,80). Chromosome and DNA labeling studies showed that during asymmetric divisions of muscle stem cells, the original chromatids (DNA strands), which are templates for DNA replication during the mitotic S phase, are inherited by a stem-like daughter cell, while newly replicated chromatids (DNA) segregate to the myogenic progenitor (81,82). These observations support the hypothesis of “immortal DNA” (83-86), postulating that preferential retention of immortal (template) DNA prevents the accumulation of mutations (occurring during DNA replication) in stem cells (Figure 3). Another theory assumes that asymmetric segregation of chromatids relates to their different epigenetic state, which determines gene expression patterns and cell fate (87). Finding that asymmetric cell-fate determinant Numb (88) co-segregates with original DNA templates to daughter cell, expressing the self-renewal marker Pax7, also support the immortal DNA hypothesis (Figure 3) (80).

Resident and infiltrating macrophages in muscles are crucial for muscle homeostasis, regeneration, and repair. Resident macrophages of skeletal muscle originate from the yolk sac, fetal liver, and blood monocytes, which

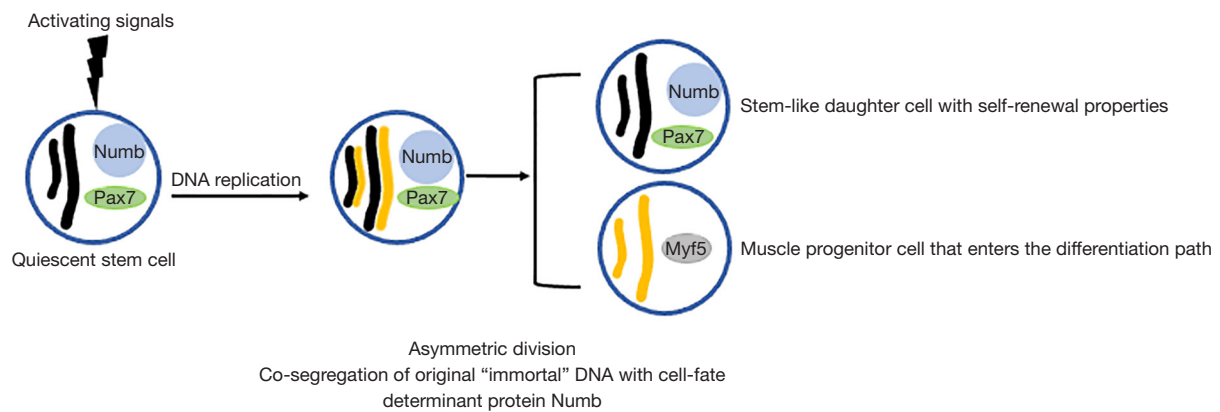


Figure 3 Asymmetric division of myogenic stem cell according to the immortal DNA hypothesis. Quiescent stem cell expresses stemness markers Numb and Pax7. Activated (by developmental or injury signals) stem cell enters division and replicates DNA during the mitotic S phase. The "old" chromosome (chromatid/DNA) is colored black, and the newly synthesized chromatid is yellow. The division of the stem cell and segregation of Numb, Pax7, and old and new chromatids (DNA) are asymmetrical. The daughter cell inheriting Numb, Pax7, and old (original) DNA becomes the stem cell with cell-renewal properties, and the sibling lacking stemness markers becomes the muscle progenitor cell, which expresses myogenic factor Myf5 and enters the muscle differentiation pathway. Inheritance of the old (original copy) of the DNA assures that the stem cells' DNA does not contain mutations possibly created during DNA replication. Myf5, myogenic factor 5; Pax7, paired box 7.

derive from adult BM (89,90). Resident macrophages are $CD45^+F4/80^+CD64^+$, and they express transcription factors Maf, Mef2c, and Tcf4, and a low level of glycosylphosphatidylinositol (GPI)-anchored protein Ly6C, and a high level of CD163, and CD206 (Figure 4) (91,92). Resident macrophages seem to be muscle-type specific; limb muscle macrophages have lower expression of stress-related proteins than those of respiratory muscle. Based on their function, there are two subtypes of muscle resident macrophages: $CCR2^+/MHC\ II^{high}/Lyve1^{low}$ macrophages are more active in antigen presentation, while $CCR2^-/MHC\ II^{low}/Lyve1^{high}$ macrophages are more active in phagocytosis (92). During injury, muscle is infiltrated with $Ly6C^{high}$ monocytes. The resulting $Ly6C^{high}$ macrophages release pro-inflammatory cytokines [TNF- α , IL-6, and prostaglandin E synthase 2 (PGE2)], which promote proliferation and inhibit myoblasts/satellite cells differentiation and fusion (Figure 4). In contrast, during healing and muscle regeneration, anti-inflammatory cytokines (IL-4 and IL-13) released by $Ly6C^{low}$ macrophages promote differentiation and fusion and inhibit myoblasts/satellite cell proliferation (Figure 4) (93,94). Macrophages affect myoblast precursors not

only through paracrine signaling but also through direct physical contact involving adhesion molecules VCAM-1, intercellular adhesion molecule 1 (ICAM-1), and platelet endothelial cell adhesion molecule 1 (PECAM-1). Such direct interaction inhibits apoptosis of myogenic precursors (Figure 4) (94-96). Transfer of mitochondria between macrophages and stem cells via TNTs or vesicles can improve metabolism, muscle progenitors' proliferation, and stem cell differentiation potential (Figure 4) (97-99).

Conclusions

Reciprocal interactions between stem/progenitor cells and macrophages and the effect of macrophage polarization status on stem/progenitor cell fate open new therapeutic possibilities for many diseases. For example, manipulation of macrophage polarization and/or accumulation may activate or inhibit stem cell proliferation or differentiation and benefit a treatment. Further studies of tissue-resident and infiltrating macrophages using modern techniques of single-cell transcriptome and lineage tracing are necessary to gain insight into the identity and origin of macrophages and stem cells within different tissues and organs.

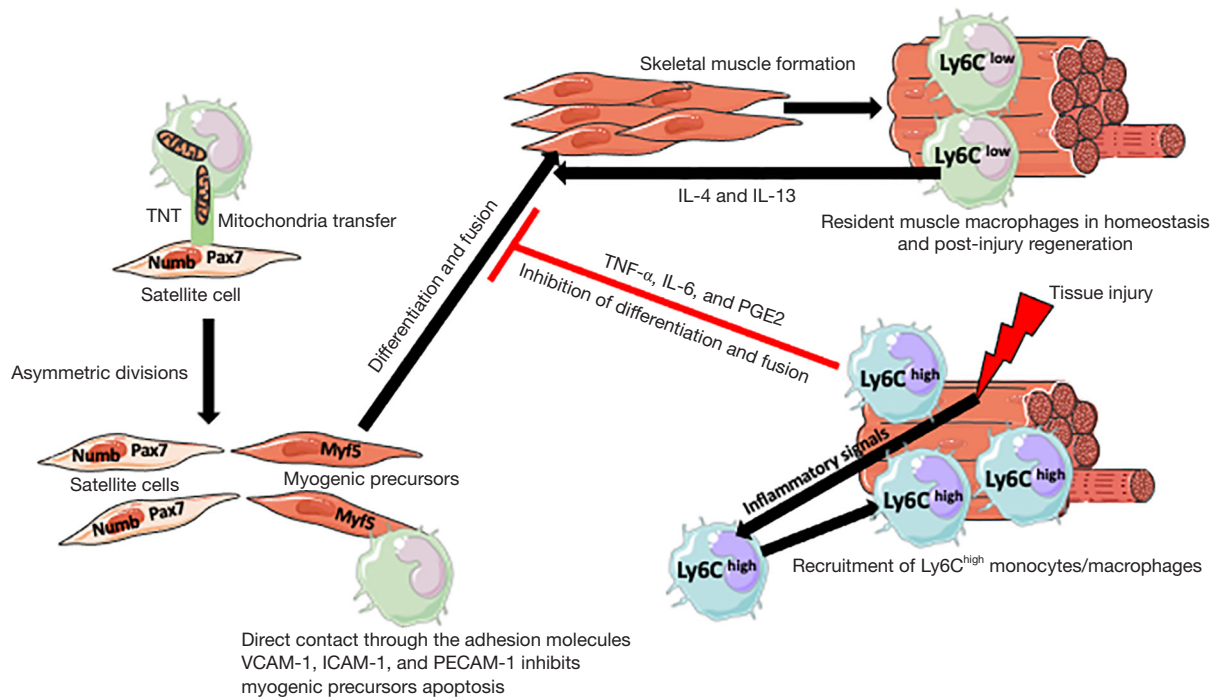


Figure 4 Interactions between macrophages and satellite/myogenic precursor cells in the skeletal muscle. Satellite cells express stemness markers Numb and Pax7. Macrophages improve satellite cells' metabolism and survival by delivering, via TNTs, metabolically fit mitochondria, and by inhibiting apoptosis through direct cell-cell contact mediated by the adhesion molecules VCAM-1, ICAM-1, and PECAM-1. The asymmetric divisions of stem cells produce new stem cells, which inherit stemness markers, and the myogenic precursors, which express myogenic factor Myf5 and differentiate, and fuse to form differentiated muscle cells. Differentiated skeletal muscle contains resident macrophages that express low levels of Ly6C and promote via secretion of IL-4 and IL-13, the differentiation and fusion of myogenic precursors. Ly6C^{low} resident macrophages retain muscle homeostasis and promote muscle regeneration. Muscle injury produces inflammatory signals, which recruit Ly6C^{high} monocytes/macrophages to the muscle. Ly6C^{high} macrophages secrete TNF- α , IL-6, and PGE2, which inhibit differentiation and fusion of myogenic precursors. ICAM-1, intercellular adhesion molecule 1; IL, interleukin; Ly6C, lymphocyte antigen 6C; Myf5, myogenic factor 5; Pax7, paired box 7; PECAM-1, platelet endothelial cell adhesion molecule 1; PGE2, prostaglandin E synthase 2; TNF, tumor necrosis factor; TNT, tunneling nanotube; VCAM-1, vascular cell adhesion molecule-1.

Acknowledgments

Drawings used to make figures were from the Servier Medical ART: SMART, smart.servier.com.

Funding: None.

Footnote

Conflicts of Interest: All authors have completed the ICMJE uniform disclosure form (available at <https://sci.amegroups.com/article/view/10.21037/sci-2023-009/coif>). The authors have no conflicts of interest to declare.

Ethical Statement: The authors are accountable for all

aspects of the work in ensuring that questions related to the accuracy or integrity of any part of the work are appropriately investigated and resolved.

Open Access Statement: This is an Open Access article distributed in accordance with the Creative Commons Attribution-NonCommercial-NoDerivs 4.0 International License (CC BY-NC-ND 4.0), which permits the non-commercial replication and distribution of the article with the strict proviso that no changes or edits are made and the original work is properly cited (including links to both the formal publication through the relevant DOI and the license). See: <https://creativecommons.org/>

[licenses/by-nc-nd/4.0/](https://creativecommons.org/licenses/by-nc-nd/4.0/).

References

1. Alberts B, Johnson A, Lewis J, et al. *Molecular Biology of the Cell*. 4th edition. New York: Garland Science, 2002. *General Principles of Cell Communication*. Available online: <https://www.ncbi.nlm.nih.gov/books/NBK26813/>
2. Kloc M, Kubiak JZ, Bilinski SM. Gametic synapses, nanotubes and sperm RNAs - Redefining the origin of maternal determinants. *Mech Dev* 2016;141:1-3.
3. Kloc M, Uosef A, Leśniak M, et al. Reciprocal interactions between mesenchymal stem cells and macrophages. *Int J Dev Biol* 2020;64:465-9.
4. Cai W, Zhang J, Yu Y, et al. Mitochondrial Transfer Regulates Cell Fate Through Metabolic Remodeling in Osteoporosis. *Adv Sci (Weinh)* 2023;10:e2204871.
5. Goodman S, Naphade S, Khan M, et al. Macrophage polarization impacts tunneling nanotube formation and intercellular organelle trafficking. *Sci Rep* 2019;9:14529.
6. Li RF, Zhang W, Man QW, et al. Tunneling nanotubes mediate intercellular communication between endothelial progenitor cells and osteoclast precursors. *J Mol Histol* 2019;50:483-91.
7. Porubska B, Vasek D, Somova V, et al. Sertoli Cells Possess Immunomodulatory Properties and the Ability of Mitochondrial Transfer Similar to Mesenchymal Stromal Cells. *Stem Cell Rev Rep* 2021;17:1905-16.
8. Velarde F, Ezquerro S, Delbruyere X, et al. Mesenchymal stem cell-mediated transfer of mitochondria: mechanisms and functional impact. *Cell Mol Life Sci* 2022;79:177.
9. Shahriyari L, Komarova NL. Symmetric vs. asymmetric stem cell divisions: an adaptation against cancer? *PLoS One* 2013;8:e76195.
10. Meghini F, Martins T, Zhang Q, et al. APC/C-dependent degradation of Spd2 regulates centrosome asymmetry in *Drosophila* neural stem cells. *EMBO Rep* 2023. [Epub ahead of print]. doi: 10.15252/embr.202255607.
11. Shen H, Yang M, Li S, et al. Mouse totipotent stem cells captured and maintained through spliceosomal repression. *Cell* 2021;184:2843-2859.e20.
12. Wang R, Simone-Roach C, Lindstrom-Vautrin J, et al. De Novo Generation of Pulmonary Ionocytes from Normal and Cystic Fibrosis Human Induced Pluripotent Stem Cells. *Am J Respir Crit Care Med* 2023. [Epub ahead of print]. doi: 10.1164/rccm.202205-1010LE.
13. Khoo HM, Meaker GA, Wilkinson AC. Ex Vivo Expansion and Genetic Manipulation of Mouse Hematopoietic Stem Cells in Polyvinyl Alcohol-Based Cultures. *J Vis Exp* 2023.
14. Chatzeli L, Bordeu I, Han S, et al. A cellular hierarchy of Notch and Kras signaling controls cell fate specification in the developing mouse salivary gland. *Dev Cell* 2023;58:94-109.e6.
15. Xu H, Liang H. The regulation of totipotency transcription: Perspective from in vitro and in vivo totipotency. *Front Cell Dev Biol* 2022;10:1024093.
16. Martin GR. Isolation of a pluripotent cell line from early mouse embryos cultured in medium conditioned by teratocarcinoma stem cells. *Proc Natl Acad Sci U S A* 1981;78:7634-8.
17. Evans MJ, Kaufman MH. Establishment in culture of pluripotential stem cells from mouse embryos. *Nature* 1981;292:154-6.
18. Burrumsetty AK, Nishimura K, Kishimoto T, et al. Locus-Specific Isolation of the Nanog Chromatin Identifies Regulators Relevant to Pluripotency of Mouse Embryonic Stem Cells and Reprogramming of Somatic Cells. *Int J Mol Sci* 2022;23:15242.
19. Zamfirescu AM, Yatsenko AS, Shcherbata HR. Notch signaling sculpts the stem cell niche. *Front Cell Dev Biol* 2022;10:1027222.
20. Flynn CGK, Ginkel PRV, Hubert KA, et al. Hox11-expressing interstitial cells contribute to adult skeletal muscle at homeostasis. *Development* 2023;150:dev201026.
21. Alkhani A, Korsholm C, Levy CS, et al. Neonatal Hepatic Myeloid Progenitors Expand and Propagate Liver Injury in Mice. *J Clin Med* 2023;12:337.
22. Fernandes A, King LC, Guz Y, et al. Differentiation of new insulin-producing cells is induced by injury in adult pancreatic islets. *Endocrinology* 1997;138:1750-62.
23. Kriegstein A, Alvarez-Buylla A. The glial nature of embryonic and adult neural stem cells. *Annu Rev Neurosci* 2009;32:149-84.
24. Brossard C, Pouliet AL, Lefranc AC, et al. Mesenchymal stem cells limit vascular and epithelial damage and restore the impermeability of the urothelium in chronic radiation cystitis. *Stem Cell Res Ther* 2023;14:5.
25. Takahashi K, Tanabe K, Ohnuki M, et al. Induction of pluripotent stem cells from adult human fibroblasts by defined factors. *Cell* 2007;131:861-72.
26. Hayashi K, Saitou M. Generation of eggs from mouse embryonic stem cells and induced pluripotent stem cells. *Nat Protoc* 2013;8:1513-24.
27. Zhao N, Sheng M, Wang X, et al. Differentiation of Human Induced Pluripotent Stem Cells into Male Germ Cells. *Curr Stem Cell Res Ther* 2021;16:622-9.

28. Javaid MS, Tan T, Dvir N, et al. Human In Vitro Models of Epilepsy Using Embryonic and Induced Pluripotent Stem Cells. *Cells* 2022;11:3957.
29. Herbert DR, Hölscher C, Mohrs M, et al. Alternative macrophage activation is essential for survival during schistosomiasis and downmodulates T helper 1 responses and immunopathology. *Immunity* 2004;20:623-35.
30. Qu M, Zhu H, Zhang X. Extracellular vesicle-mediated regulation of macrophage polarization in bacterial infections. *Front Microbiol* 2022;13:1039040.
31. Liu L, Stokes JV, Tan W, et al. An optimized flow cytometry panel for classifying macrophage polarization. *J Immunol Methods* 2022;511:113378.
32. Zhang F, Zhang J, Cao P, et al. The characteristics of regulatory macrophages and their roles in transplantation. *Int Immunopharmacol* 2021;91:107322.
33. Mosser DM, Edwards JP. Exploring the full spectrum of macrophage activation. *Nat Rev Immunol* 2008;8:958-69. Erratum in: *Nat Rev Immunol* 2010;10:460.
34. Saclier M, Yacoub-Youssef H, Mackey AL, et al. Differentially activated macrophages orchestrate myogenic precursor cell fate during human skeletal muscle regeneration. *Stem Cells* 2013;31:384-96.
35. Gordon S, Martinez FO. Alternative activation of macrophages: mechanism and functions. *Immunity* 2010;32:593-604.
36. Kloc M, Kubiak JZ, Zdanowski R, et al. Memory Macrophages. *Int J Mol Sci* 2022;24:38.
37. Dourson AJ, Fadaka AO, Warshak AM, et al. Macrophage epigenetic memories of early life injury drive neonatal nociceptive priming. Preprint. bioRxiv. 2023. doi: 10.1101/2023.02.13.528015.
38. Chang MK, Raggatt LJ, Alexander KA, et al. Osteal tissue macrophages are intercalated throughout human and mouse bone lining tissues and regulate osteoblast function in vitro and in vivo. *J Immunol* 2008;181:1232-44.
39. Kulle A, Thanabalasurari A, Cohen TS, et al. Resident macrophages of the lung and liver: The guardians of our tissues. *Front Immunol* 2022;13:1029085.
40. Le K, Sun J, Ghaemmaghami J, et al. Blockade of CCR1 induces a phenotypic shift in macrophages and triggers a favorable antilymphoma activity. *Blood Adv* 2023;bloodadvances.2022008722.
41. Kou Y, Sun Q, Zhu R, et al. Dioscin induces M1 macrophage polarization through Connexin-43 Channels in Tumor-associated-macrophages-mediated melanoma metastasis. *Phytomedicine* 2023;109:154559.
42. Cai H, Chen Y, Chen X, et al. Tumor-associated macrophages mediate gastrointestinal stromal tumor cell metastasis through CXCL2/CXCR2. *Cell Immunol* 2023;384:104642.
43. Wang H, Tian T, Zhang J. Tumor-Associated Macrophages (TAMs) in Colorectal Cancer (CRC): From Mechanism to Therapy and Prognosis. *Int J Mol Sci* 2021;22:8470.
44. Shi X, Zhao H, Kang Y, et al. The Role of Mononuclear Phagocytes in the Testes and Epididymis. *Int J Mol Sci* 2022;24:53.
45. Stremmel C, Schuchert R, Wagner F, et al. Yolk sac macrophage progenitors traffic to the embryo during defined stages of development. *Nat Commun* 2018;9:75.
46. Wysoczynski M, Moore JB 4th, Uchida S. A novel macrophage subtype directs hematopoietic stem cell homing and retention. *Ann Transl Med* 2019;7:S79.
47. Yu X, Buttgereit A, Lelios I, et al. The Cytokine TGF- β Promotes the Development and Homeostasis of Alveolar Macrophages. *Immunity* 2017;47:903-912.e4.
48. Epelman S, Lavine KJ, Randolph GJ. Origin and functions of tissue macrophages. *Immunity* 2014;41:21-35.
49. Haldar M, Murphy KM. Origin, development, and homeostasis of tissue-resident macrophages. *Immunol Rev* 2014;262:25-35.
50. Wynn TA, Chawla A, Pollard JW. Macrophage biology in development, homeostasis and disease. *Nature* 2013;496:445-55.
51. Li D, Xue W, Li M, et al. VCAM-1(+) macrophages guide the homing of HSPCs to a vascular niche. *Nature* 2018;564:119-24.
52. Zhang X, Craig SE, Kirby H, et al. Molecular basis for the dynamic strength of the integrin $\alpha 4 \beta 1$ /VCAM-1 interaction. *Biophys J* 2004;87:3470-8.
53. Dutta P, Hoyer FF, Grigoryeva LS, et al. Macrophages retain hematopoietic stem cells in the spleen via VCAM-1. *J Exp Med* 2015;212:497-512.
54. Richard AJ, White U, Elks CM, et al. Adipose Tissue: Physiology to Metabolic Dysfunction. [Updated 2020 Apr 4]. In: Feingold KR, Anawalt B, Boyce A, et al., editors. *Endotext* [Internet]. South Dartmouth (MA): MDText.com, Inc., 2000. Available online: <https://www.ncbi.nlm.nih.gov/books/NBK555602/>
55. Choe SS, Huh JY, Hwang IJ, et al. Adipose Tissue Remodeling: Its Role in Energy Metabolism and Metabolic Disorders. *Front Endocrinol (Lausanne)* 2016;7:30.
56. Trayhurn P, Beattie JH. Physiological role of adipose tissue: white adipose tissue as an endocrine and secretory organ. *Proc Nutr Soc* 2001;60:329-39.

57. Casteilla L, Planat-Benard V, Laharrague P, et al. Adipose-derived stromal cells: Their identity and uses in clinical trials, an update. *World J Stem Cells* 2011;3:25-33.
58. Gimble JM, Katz AJ, Bunnell BA. Adipose-derived stem cells for regenerative medicine. *Circ Res* 2007;100:1249-60.
59. Altun I, Yan X, Ussar S. Immune Cell Regulation of White Adipose Progenitor Cell Fate. *Front Endocrinol (Lausanne)* 2022;13:859044.
60. Li Y, Yun K, Mu R. A review on the biology and properties of adipose tissue macrophages involved in adipose tissue physiological and pathophysiological processes. *Lipids Health Dis* 2020;19:164.
61. Félix I, Jokela H, Karhula J, et al. Single-Cell Proteomics Reveals the Defined Heterogeneity of Resident Macrophages in White Adipose Tissue. *Front Immunol* 2021;12:719979.
62. Catrysse L, van Loo G. Adipose tissue macrophages and their polarization in health and obesity. *Cell Immunol* 2018;330:114-9.
63. Hachiya R, Tanaka M, Itoh M, et al. Molecular mechanism of crosstalk between immune and metabolic systems in metabolic syndrome. *Inflamm Regen* 2022;42:13.
64. Kaplan JL, Marshall MA, C McSkimming C, et al. Adipocyte progenitor cells initiate monocyte chemoattractant protein-1-mediated macrophage accumulation in visceral adipose tissue. *Mol Metab* 2015;4:779-94.
65. Molgat AS, Gagnon A, Sorisky A. Preadipocyte apoptosis is prevented by macrophage-conditioned medium in a PDGF-dependent manner. *Am J Physiol Cell Physiol* 2009;296:C757-65.
66. Molgat AS, Gagnon A, Foster C, et al. The activation state of macrophages alters their ability to suppress preadipocyte apoptosis. *J Endocrinol* 2012;214:21-9.
67. Ide J, Gagnon A, Molgat AS, et al. Macrophage-conditioned medium inhibits the activation of cyclin-dependent kinase 2 by adipogenic inducers in 3T3-L1 preadipocytes. *J Cell Physiol* 2011;226:2297-306.
68. Yarmo MN, Landry A, Molgat AS, et al. Macrophage-conditioned medium inhibits differentiation-induced Rb phosphorylation in 3T3-L1 preadipocytes. *Exp Cell Res* 2009;315:411-8.
69. Jang H, Kim M, Lee S, et al. Adipose tissue hyperplasia with enhanced adipocyte-derived stem cell activity in Tc1(C8orf4)-deleted mice. *Sci Rep* 2016;6:35884.
70. Molgat AS, Gagnon A, Sorisky A. Macrophage-induced preadipocyte survival depends on signaling through Akt, ERK1/2, and reactive oxygen species. *Exp Cell Res* 2011;317:521-30.
71. Ma H, Li YN, Song L, et al. Macrophages inhibit adipogenic differentiation of adipose tissue derived mesenchymal stem/stromal cells by producing pro-inflammatory cytokines. *Cell Biosci* 2020;10:88.
72. Bi P, McAnally JR, Shelton JM, et al. Fusogenic micropeptide Myomixer is essential for satellite cell fusion and muscle regeneration. *Proc Natl Acad Sci U S A* 2018;115:3864-9.
73. Noviello C, Kobon K, Delivry L, et al. RhoA within myofibers controls satellite cell microenvironment to allow hypertrophic growth. *iScience* 2022;25:103616.
74. Murach KA, Fry CS, Dupont-Versteegden EE, et al. Fusion and beyond: Satellite cell contributions to loading-induced skeletal muscle adaptation. *FASEB J* 2021;35:e21893.
75. Ono Y, Boldrin L, Knopp P, et al. Muscle satellite cells are a functionally heterogeneous population in both somite-derived and branchiomeric muscles. *Dev Biol* 2010;337:29-41.
76. Dumont NA, Bentzinger CF, Sincennes MC, et al. Satellite Cells and Skeletal Muscle Regeneration. *Compr Physiol* 2015;5:1027-59.
77. Morgan JE, Partridge TA. Muscle satellite cells. *Int J Biochem Cell Biol* 2003;35:1151-6.
78. Wang YX, Dumont NA, Rudnicki MA. Muscle stem cells at a glance. *J Cell Sci* 2014;127:4543-8.
79. Seale P, Sabourin LA, Girgis-Gabardo A, et al. Pax7 is required for the specification of myogenic satellite cells. *Cell* 2000;102:777-86.
80. García-Prat L, Perdiguero E, Alonso-Martín S, et al. FoxO maintains a genuine muscle stem-cell quiescent state until geriatric age. *Nat Cell Biol* 2020;22:1307-18.
81. Conboy MJ, Karasov AO, Rando TA. High incidence of non-random template strand segregation and asymmetric fate determination in dividing stem cells and their progeny. *PLoS Biol* 2007;5:e102.
82. Shinin V, Gayraud-Morel B, Gomès D, et al. Asymmetric division and cosegregation of template DNA strands in adult muscle satellite cells. *Nat Cell Biol* 2006;8:677-87.
83. Cairns J. Mutation selection and the natural history of cancer. *Nature* 1975;255:197-200.
84. Cairns J. Cancer and the immortal strand hypothesis. *Genetics* 2006;174:1069-72.
85. Karpowicz P, Morshead C, Kam A, et al. Support for the immortal strand hypothesis: neural stem cells partition DNA asymmetrically in vitro. *J Cell Biol* 2005;170:721-32.
86. Yadlapalli S, Yamashita YM. DNA asymmetry in stem cells

- immortal or mortal? *J Cell Sci* 2013;126:4069-76.
87. Lansdorp PM. Immortal strands? Give me a break. *Cell* 2007;129:1244-7.
88. Tang H, Rompani SB, Atkins JB, et al. Numb proteins specify asymmetric cell fates via an endocytosis- and proteasome-independent pathway. *Mol Cell Biol* 2005;25:2899-909.
89. Moore MA, Metcalf D. Ontogeny of the haemopoietic system: yolk sac origin of in vivo and in vitro colony forming cells in the developing mouse embryo. *Br J Haematol* 1970;18:279-96.
90. Cline MJ, Moore MA. Embryonic origin of the mouse macrophage. *Blood* 1972;39:842-9.
91. Wang X, Sathe AA, Smith GR, et al. Heterogeneous origins and functions of mouse skeletal muscle-resident macrophages. *Proc Natl Acad Sci U S A* 2020;117:20729-40.
92. Wang X, Zhou L. The Many Roles of Macrophages in Skeletal Muscle Injury and Repair. *Front Cell Dev Biol* 2022;10:952249.
93. Arnold L, Henry A, Poron F, et al. Inflammatory monocytes recruited after skeletal muscle injury switch into antiinflammatory macrophages to support myogenesis. *J Exp Med* 2007;204:1057-69.
94. Dort J, Fabre P, Molina T, et al. Macrophages Are Key Regulators of Stem Cells during Skeletal Muscle Regeneration and Diseases. *Stem Cells Int* 2019;2019:4761427.
95. Chazaud B, Sonnet C, Lafuste P, et al. Satellite cells attract monocytes and use macrophages as a support to escape apoptosis and enhance muscle growth. *J Cell Biol* 2003;163:1133-43.
96. Sonnet C, Lafuste P, Arnold L, et al. Human macrophages rescue myoblasts and myotubes from apoptosis through a set of adhesion molecular systems. *J Cell Sci* 2006;119:2497-507.
97. Liu D, Gao Y, Liu J, et al. Intercellular mitochondrial transfer as a means of tissue revitalization. *Signal Transduct Target Ther* 2021;6:65.
98. Hong X, Isern J, Campanario S, et al. Mitochondrial dynamics maintain muscle stem cell regenerative competence throughout adult life by regulating metabolism and mitophagy. *Cell Stem Cell* 2022;29:1298-1314.e10.
99. Murray LMA, Krasnodembskaya AD. Concise Review: Intercellular Communication Via Organelle Transfer in the Biology and Therapeutic Applications of Stem Cells. *Stem Cells* 2019;37:14-25.

doi: 10.21037/sci-2023-009

Cite this article as: Kloc M, Uosef A, Ubelaker HV, Kubiak JZ, Ghobrial RM. Macrophages and stem/progenitor cells interplay in adipose tissue and skeletal muscle: a review. *Stem Cell Investig* 2023;10:9.