



# Simulation of a turbulent supercritical hydrogen / oxygen flow behind a splitter plate: cold flow and flame stabilization

Anthony Ruiz, Laurent Selle

## ► To cite this version:

Anthony Ruiz, Laurent Selle. Simulation of a turbulent supercritical hydrogen / oxygen flow behind a splitter plate: cold flow and flame stabilization. 7th Mediterranean Combustion Symposium, Sep 2011, Cagliari, Italy. pp.0. hal-04087620

**HAL Id: hal-04087620**

**<https://hal.science/hal-04087620v1>**

Submitted on 3 May 2023

**HAL** is a multi-disciplinary open access archive for the deposit and dissemination of scientific research documents, whether they are published or not. The documents may come from teaching and research institutions in France or abroad, or from public or private research centers.

L'archive ouverte pluridisciplinaire **HAL**, est destinée au dépôt et à la diffusion de documents scientifiques de niveau recherche, publiés ou non, émanant des établissements d'enseignement et de recherche français ou étrangers, des laboratoires publics ou privés.



## Open Archive Toulouse Archive Ouverte (OATAO)

OATAO is an open access repository that collects the work of Toulouse researchers and makes it freely available over the web where possible.

This is an author-deposited version published in: <http://oatao.univ-toulouse.fr/>  
Eprints ID: 4895

**To cite this document:**

Ruiz , A. and Selle, L. *Simulation of a turbulent supercritical hydrogen / oxygen flow behind a splitter plate: cold flow and flame stabilization*. (2011) In: 7th Mediterranean Combustion Symposium, 11-15 Sept 2011, Laguna, Cagliari, Sardinia, Italy.

Any correspondence concerning this service should be sent to the repository administrator: [staff-oatao@inp-toulouse.fr](mailto:staff-oatao@inp-toulouse.fr)

## ***SIMULATION OF A TURBULENT SUPERCRITICAL HYDROGEN / OXYGEN FLOW BEHIND A SPLITTER PLATE: COLD FLOW AND FLAME STABILIZATION***

**A. Ruiz<sup>1</sup> and L. Selle<sup>2,3</sup>**

Corresponding author: selle@imft.fr

<sup>1</sup> CERFACS, 42 Avenue G. Coriolis, 31057, Toulouse, France

<sup>2</sup> Université de Toulouse; INPT, UPS; IMFT (Institut de Mécanique des Fluides de Toulouse); Allée Camille Soula, F-31400 Toulouse, France

<sup>3</sup> CNRS; IMFT; F-31400 Toulouse, France

### **Abstract**

The numerical simulation of fluid dynamics and combustion in cryogenic rocket engines is addressed in this paper, with the intent to elucidate flame stabilization mechanisms. A model configuration is devised to allow a fully resolved simulation, both for the dynamics and the flame structure: a two-dimensional splitter plate represents the lip of an injector and the operating point is typical of a real engine. The non-reacting flow field is first scrutinized to evaluate the impact of the large density gradients between the fuel (hydrogen) and oxidizer (oxygen) streams. It is found that the turbulence generated by the splitter is very intense and strongly distorts the high-density-gradient front at both small and large scales. Under reacting conditions, the flame stabilizes right at the lip of the injector, which is a common feature of hydrogen / oxygen flames under these conditions. A particularly complex flame structure is evidenced at the anchoring point, with turbulent transport playing an important role.

### **Introduction**

The development of liquid-propellant rocket engines is a long and costly trial-and-error process. One of the major challenges in the design of the combustion chamber is to ensure a stable combustion. Indeed, the occurrence of combustion instabilities can cause structural damage but also raises critical issues for mission success, as well as crew safety. Another critical point is to ensure a steady combustion regime, avoiding flashback and blowoff events, for example. A key parameter controlling these phenomena is the stabilization of the flame downstream the injector, which is the subject of the present study. The literature on flame stabilization is extremely large, with detailed investigations using both experiments and numerical simulations. The main parameter describing flame stabilization is the distance from the injector to the flame front and a wide variety of phenomenon have been reported with chemistry, transport and various sources of heat losses potentially playing an important role.

Cryogenic rocket engines operate at a very large pressure, at which reactants are usually under a supercritical state. In such conditions, the phase-change phenomena no longer occurs and fluids transition from a liquid-like state to a gas-like state in a continuous way. However, because the equation of state under such conditions is highly non-linear, very large density gradients due to temperature or composition variations are common. It has been shown that these gradients affect the

overall dynamics of jets as well as the development of turbulence, mixing processes and eventually combustion [1, 2]. This particular behavior is a major issue for the development of accurate and quantitative numerical simulations. However, over the past 10 years, a number of research groups were able to conduct detailed simulations under fairly complex conditions, with developed turbulence [3, 4, 5] and sometimes combustion [6, 7].

The objective of this paper is to present a fully-resolved numerical simulation of a model injector to scrutinize turbulence, mixing and combustion processes downstream the injector. The numerics and models are first presented (Sec. Numerics and Models) followed by the description of the configuration (Sec. Configuration). Then the validation of the chemistry is presented in Sec. Chemistry, followed the analysis of the cold and reacting flows (Sec. Results and analysis).

## Numerics and Models

The compressible Navier-Stokes equations are solved using the AVBP code [8, 9]. In the present study, a two step Taylor-Galerkin scheme called TTG4A is used, which is third order in space and time [10]. Real-gas thermodynamics is accounted for through the Peng-Robinson equation of state [11] while transport coefficients are modeled based on the theory of corresponding states for the dynamic viscosity and the thermal conductivity [12, 13] and constant Schmidt numbers (c.f. Tab. 1). This overall numerical and modeling methodology has already been validated for non reacting flows [14]. The critical-point coordinates of the intermediate species OH, O, H, H<sub>2</sub>O<sub>2</sub>, HO<sub>2</sub> (for which no experimental data is available) is estimated using the Lennard-Jones potential-well depth  $\sigma_i$ , and the molecular diameter  $\epsilon_i$  of the  $i$ -th species from the CHEMKIN transport coefficients of the San Diego Mechanism, according to the following expression [15]:

$$V_{c,i} = 3.29N\sigma_i^3 \quad (1)$$

$$T_{c,i} = 1.316 \frac{\epsilon_i}{k} \quad (2)$$

where  $N$  is the Avogadro number and  $k$  is the Boltzmann constant. The acentric factor  $\omega_{ac}$  is set to zero for radical species. The numerical values for all species are summarized in Tab. 1.

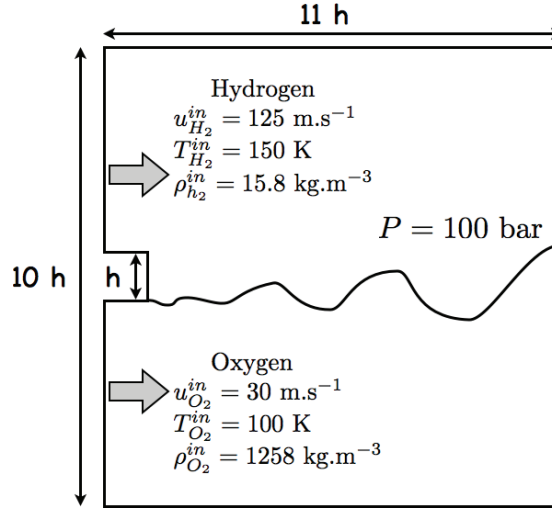
Parameters	H2	O2	H2O	O	H	OH	H2O2	HO2
$T_{c,i}$ (K)	33	154.581	647.096	105.28	190.82	105.28	141.34	141.34
$P_{c,i}$ (MPa)	1.2838	5.0430	22.064	7.0882	31.013	7.0883	4.7861	4.7861
$V_{c,i}$ (cm <sup>3</sup> /mol)	64.284	73.368	55.948	41.205	17.069	41.205	81.926	81.926
$\omega_{ac}$	-0.216	0.0222	0.3443	0.0	0.0	0.0	0.0	0.0
Schmidt Number	0.28	0.99	0.77	0.64	0.17	0.65	0.65	0.65

**Table 1.** Species critical-point properties (temperature  $T$ , pressure  $P$ , molar volume  $V$  and acentric factor  $\omega$ ) and Schmidt numbers.

## Configuration

The configuration is a two-dimensional H<sub>2</sub>/O<sub>2</sub> flame stabilized behind a splitter plate at a mean pressure of 100 bar. The computational domain, presented in Fig. 1, is  $11h$  long in the  $x$ -direction and  $10h$  in the  $y$ -direction, where  $h = 500 \cdot 10^{-6}$  m is the splitter height. Hydrogen is injected above

the splitter at a temperature  $T_{H_2}^{in} = 150$  K and a bulk velocity  $u_{H_2}^{in} = 125$  m/s. Below the splitter, oxygen is fed at  $T_{O_2}^{in} = 100$  K and  $u_{O_2}^{in} = 30$  m/s. These conditions were chosen to mimic a typical liquid rocket engine, at the nominal operating point. The shape of the inlet velocity profiles follows a 1/7th power law. Although developed turbulence is generally present in the feeding lines of rocket engines, here, no velocity perturbation is added through the inflow boundary condition. And yet, strong turbulence levels caused by vortex shedding are observed downstream the splitter allowing for a developed turbulent mixing layer and strong flame / turbulence interactions (c.f. Sec. Results and analysis). The outlet boundary condition is derived from the NSCBC technique [16, 17] and accounts for both real-gas effects [18] and transverse terms [19]. With a procedure similar to that of Bogey et al. [20], a sponge layer of thickness  $h$  is imposed at the exit of the computational domain to prevent spurious oscillations when the strong density gradients hit the boundary. The upper and lower boundaries are treated as symmetries while the splitter is an adiabatic no-slip wall. The mesh resolution is  $\Delta = h/500$  in a layer containing the splitter, with a  $3h$  vertical extent. Outside this zone, a transverse stretching factor of approximately 1.02 is employed. The mesh contains approximately 13.5 million nodes.



**Figure 1.** Computational domain for the two-dimensional splitter-plate configuration.

## Chemistry

The combustion of hydrogen and oxygen is modeled using a detailed scheme accounting for 8 species and 12 reactions [21], which is derived from the San Diego mechanism [22]. The forward rate coefficients are given in Tab. 2. The backward reaction rates are classically computed using low-pressure entropy and enthalpy NIST/JANAF tables [23]. A more general treatment of the reaction rates in the real-gas framework, using chemical potentials directly computed from the equation of state has been investigated by Giovangigli *et al.* [15], however, the impact on the flame structure appears to be rather small, showing that the perfect-gas treatment of the reaction rates is a good approximation: this could be due to the high temperature (and hence perfect-gas behavior) at the flame location. Note that since high pressure is considered in the present study, the high-pressure limit of the falloff reactions have been taken.

	Reaction	$A^a$	$n$	$E^a$
1	$\text{H} + \text{O}_2 \rightleftharpoons \text{OH} + \text{O}$	$3.52 \cdot 10^{16}$	-0.7	71.42
2	$\text{H}_2 + \text{O} \rightleftharpoons \text{OH} + \text{H}$	$5.06 \cdot 10^4$	2.67	26.32
3	$\text{H}_2 + \text{OH} \rightleftharpoons \text{H}_2\text{O} + \text{H}$	$1.17 \cdot 10^9$	1.3	15.21
4	$\text{H} + \text{O}_2 + \text{M} \rightarrow \text{HO}_2 + \text{M}^b$	$4.65 \cdot 10^{12}$	0.44	0.0
5	$\text{HO}_2 + \text{H} \rightarrow 2\text{OH}$	$7.08 \cdot 10^{13}$	0.0	1.23
6	$\text{HO}_2 + \text{H} \rightleftharpoons \text{H}_2 + \text{O}_2$	$1.66 \cdot 10^{13}$	0.0	3.44
7	$\text{HO}_2 + \text{OH} \rightarrow \text{H}_2\text{O} + \text{O}_2$	$2.89 \cdot 10^{13}$	0.0	-2.08
8	$\text{H} + \text{OH} + \text{M} \rightleftharpoons \text{H}_2\text{O} + \text{M}^c$	$4.00 \cdot 10^{22}$	-2.0	0.0
9	$2\text{H} + \text{M} \rightleftharpoons \text{H}_2 + \text{M}^c$	$1.30 \cdot 10^{18}$	-1.0	0.0
10	$2\text{HO}_2 \rightarrow \text{H}_2\text{O}_2 + \text{O}_2$	$3.02 \cdot 10^{12}$	0.0	5.8
11	$\text{HO}_2 + \text{H}_2 \rightarrow \text{H}_2\text{O}_2 + \text{H}$	$1.62 \cdot 10^{11}$	0.61	100.14
12	$\text{H}_2\text{O}_2 + \text{M} \rightarrow 2\text{OH} + \text{M}^d$	$2.62 \cdot 10^{19}$	-1.39	214.74

**Table 2.** Forward rate coefficients in Arrhenius form  $k = AT^n \exp(-E/RT)$  for the skeletal mechanism.

<sup>a</sup>Units are mol, s, cm<sup>3</sup>, kJ, and K.

<sup>b</sup>Chaperon efficiencies are 2.5 for H<sub>2</sub>, 16.0 for H<sub>2</sub>O and 1.0 for all other species.

<sup>c</sup>Chaperon efficiencies are 2.5 for H<sub>2</sub>, 12.0 for H<sub>2</sub>O and 1.0 for all other species.

<sup>d</sup>Chaperon efficiencies are 2.0 for H<sub>2</sub>, 6.0 for H<sub>2</sub>O and 1.0 for all other species.

The validation of the implementation in AVBP is achieved by comparing the flame structure using CANTERA [24] and AVBP in a counterflow flame configuration. The numerical setup is that of an opposed-jet flame [25] computed, in AVBP, on a simple square mesh (size  $h$ ) with a constant grid size identical to that of the splitter case. The left boundary condition is a symmetry, the right side an outlet, while hydrogen comes from the top and oxygen from the bottom. The boundary velocity are determined to impose a constant strain,  $a$ , on the flame:

$$u_{O_2}(x) = ax \quad (3)$$

$$v_{O_2}(y) = -ay \quad (4)$$

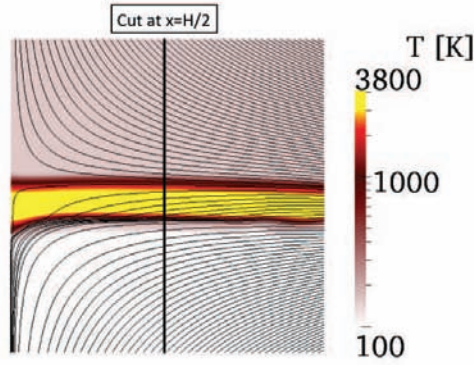
$$u_{H_2}(x) = ax \left( \frac{\rho_{O_2}}{\rho_{H_2}} \right)^{\frac{1}{2}} \quad (5)$$

$$v_{H_2}(y) = -ay \left( \frac{\rho_{O_2}}{\rho_{H_2}} \right)^{\frac{1}{2}} \quad (6)$$

The hydrogen velocity is chosen so that the momentum flux  $\rho u^2$  is the same between the oxygen and hydrogen stream, to place the stagnation point in the middle of the computational domain. As for the value of the strain,  $a$ , the validation is conducted at a value based on the splitter height  $h$  and the mean velocity difference between the two streams at the injection: this yields  $a = 3800 \text{ s}^{-1}$ . A typical result of such strained diffusion flame is presented in Fig. 2 showing streamlines superimposed on the temperature field.

The validation procedure comprises three computations:

1. **CANT\_PG**: a computation is performed using CANTERA using the perfect-gas equation of state. The temperature of the fresh gases is 300 K to limit real-gas effects.
2. **AVBP\_PG**: this is the same computation as **CANT\_PG**, performed in AVBP. Because CANTERA solves for the full transport matrices while AVBP assumes constant Schmidt numbers

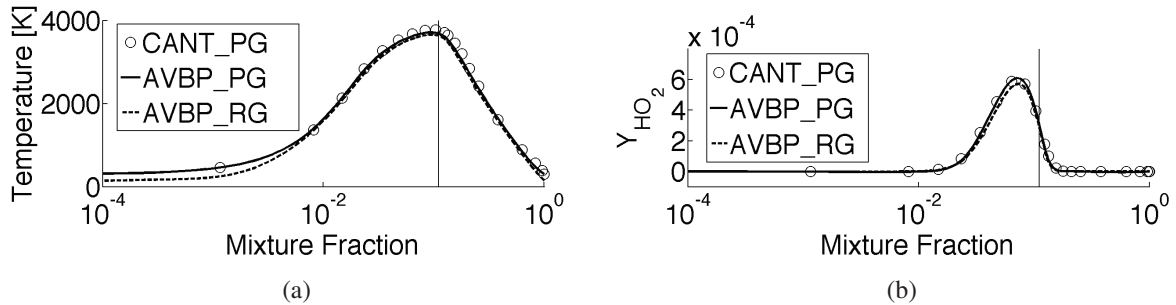


**Figure 2.** Strained diffusion flame computed in AVBP: streamlines superimposed on the temperature field. Thermodynamic conditions correspond to the splitter case: hydrogen at 150K from the top, oxygen at 100K from the bottom and ambient pressure is 100 bar.

and mixture-averaged transport coefficients, this computation is both a validation of the implementation of the chemistry in AVBP as well as a validation of the simplified transport.

3. **AVBP\_RG**: for this computation, the temperature of the fresh gases is lowered to match those of the splitter case and evaluate real-gas effects on the flame structure.

Then, a cut through the flame at  $x = h/2$  in the computational domain of AVBP is compared to the flame structure from CANTERA. Figure 3 shows the temperature and mass fraction of  $\text{HO}_2$  (the main initiator of the combustion) versus the mixture fraction for the three computations. First



**Figure 3.** Comparison of flame structure versus mixture fraction between AVBP and CANTERA. (a) temperature and (b)  $\text{HO}_2$  mass fraction. The vertical bar indicates the stoichiometric mixture fraction.

comparing simulations CANT\_PG and AVBP\_PG, the agreement between the two codes is excellent: the maximum discrepancy for the temperature is of the order of 70 K, which gives a relative error of 2 %. The differences for the mass fraction  $Y_{\text{HO}_2}$  are even smaller. This agreement validates the implementation in AVBP as well as the assumptions on the transport, for this temperature. The laminar flame in the thermodynamic conditions of the splitter case (AVBP\_RG) is very similar to the higher-temperature computation (AVBP\_PG) in the flame region. This conclusion is similar to that of Ribert *et al.* [26], which they justify by the fact that the combustion processes take place in hot regions where real-gas effects are negligible.

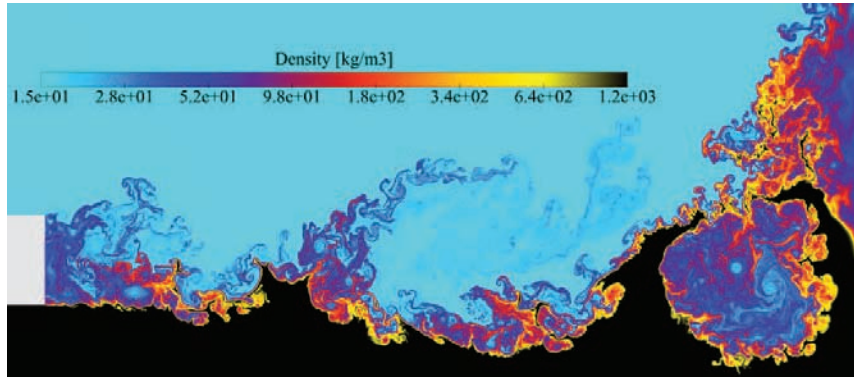
## Results and analysis

This section is devoted to the computation of the splitter configuration presented in Sec. Configuration. First, the non-reacting flow is analyzed with specific attention on the variety of scales caused by the interaction between turbulence and the large density gradients. Combustion is then initiated using the kinetics validated in Sec. Chemistry.

### Cold Flow

#### Instantaneous Snapshots

The spatial resolution in the present study is such that 500 grid points are used to discretize the splitter height  $h$ . As a comparison with previous efforts to compute such configurations [27], the resolution is ten times greater. As the resolution is increased, the range of flow structures widens considerably, especially in the density field as shown in Fig. 4. The first conclusion from this instantaneous visualization of the flow is that strong turbulence levels develop right downstream the splitter, which is an *a posteriori* validation for the lack of turbulence injection. Small vortices

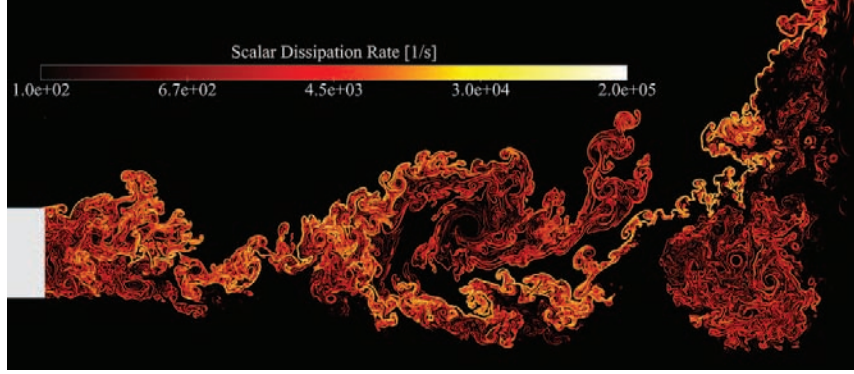


**Figure 4.** Density field, ranging from  $15 \text{ kg.m}^{-3}$  (blue) to  $1200 \text{ kg.m}^{-3}$  (black) using a logarithmic scale.

are regularly shed from the edges of the lip, due to the shear-induced instability. Then many pairing events occur that result in large vortices with a length scale comparable to that of the splitter height. While impacting the LOX stream, these vortices roll-up the LOX interface, resulting in the apparition of large waves-like structures at the boundary of the LOX stream. These density waves interact with each other and merging can occur, creating pockets where intense turbulent mixing between  $O_2$  and  $H_2$  is present. It is speculated that the wave structures identified in the density-gradient surface could correspond to the “finger-like” structures observed in many experimental studies of transcritical flows [28, 29], using shadowgraphs. The density field is also clearly distorted at much smaller scales with pockets of dense fluid eventually extracted from the dense stream. In the absence of surface tension, these small pockets do not form droplets and are therefore further broken down by turbulence.

The scalar dissipation rate  $\chi = 2\mathcal{D} \nabla Z \cdot \nabla Z$  (where  $Z$  is the mixture fraction) is a measure of the molecular mixing between hydrogen and oxygen. This mixing is favorable for combustion and is greatly enhanced by turbulence: the wrinkled exchange surface enables a larger total mass flux and the compressive strain locally steepens the composition gradients, which is also favorable for species diffusion. Figure 5 shows a snapshot of  $\chi$  where, again, the intense turbulent activity

downstream the splitter is evident. The comparison of Figs. 4 and 5 also suggests that the majority

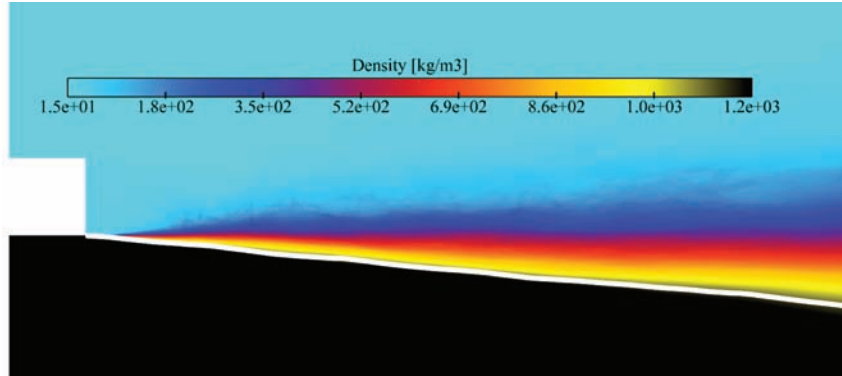


**Figure 5.** Scalar dissipation rate,  $\chi$ , in the cold flow (same physical time as in Fig. 4).

of the scalar dissipation occurs on the side of the light hydrogen stream. This would indicate that this supercritical jet behaves like a liquid jet in the sense that first, some oxygen must leave the dense stream (through evaporation in the case of a liquid jet) and is then mixed with the lighter species.

### Mean flow field

The flow field was averaged over a period of 1 millisecond. If one defines the convective time  $\tau_c$  as the flow-through time of the slowest stream (i.e. oxygen:  $\tau_c = 10h/U_{O_2}^{in} \sim 170 \mu s$ ), then the averaging time corresponds to approximately  $6 \tau_c$ . Figure 6 shows the resulting average density field, using the same logarithmic scale as for Fig. 4. The white line highlights the iso-contour

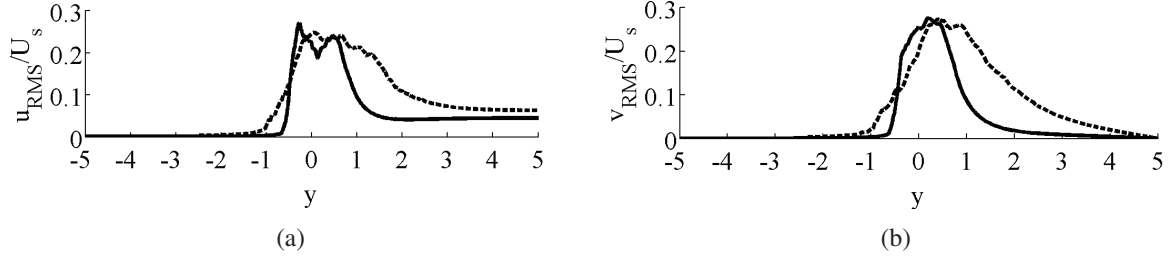


**Figure 6.** Average density field for the cold flow. White iso-contour:  $\rho = 0.9 \rho_{O_2}^{in}$ .

where the density equals 90 % of that of the dense stream (i.e.  $\rho = 0.9 \rho_{O_2}^{in}$ ), which is used to define the dense core of the jet. For the present two-dimensional computation, the angle of the dense core is  $\theta_p \simeq 5$  degrees. The value of  $\theta_p$  can be used to assess the dense core length,  $L$ , of an injector with a radius  $R$  through the relation  $\tan(\theta_p) = R/L$ , which for the present simulation yields  $L \sim 10 R$ .

## Fluctuations

Transverse cuts of longitudinal and transverse velocity fluctuations are presented in Fig. 7 at two locations: one and five splitter height downstream the splitter. The root-mean-square are normalized by  $U_s = U_{H_2}^{in} - U_{O_2}^{in}$ . In terms of intensity, both components of the velocity reach similar values ( $\sim 30\%$ ) that are already attained at  $x = h$ . This highlights again the intense turbulent activity behind the splitter. As one evolves downstream, the fluctuations spread, with much deeper penetration into the light hydrogen stream.



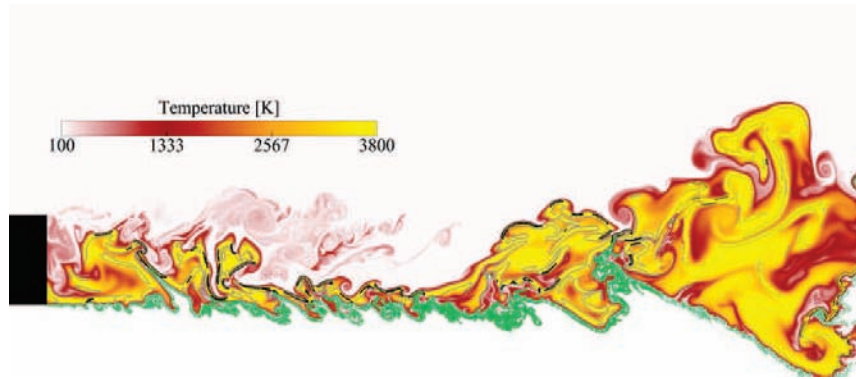
**Figure 7.** Analysis of velocity fluctuations downstream the splitter plate. —  $x = h$ ; ----  $x = 5h$ . (a) longitudinal and (b) transverse components of the velocity.

## Reacting Flow

Combustion is initiated in the computational domain with the following procedure: first the field of mixture fraction is computed from a non-reacting established flow, then, the flame structure from a laminar diffusion flame is applied onto this field with subsequent replacement of the composition and temperature. During this procedure, the cold-flow pressure and velocity fields are not altered. As expected, significant acoustic perturbations are generated when the flow adapts from this approximate solution based on an educated guess, however, the procedure is successful because the pressure waves eventually leave the computational domain and a stable combustion regime is reached.

## Flame stabilization

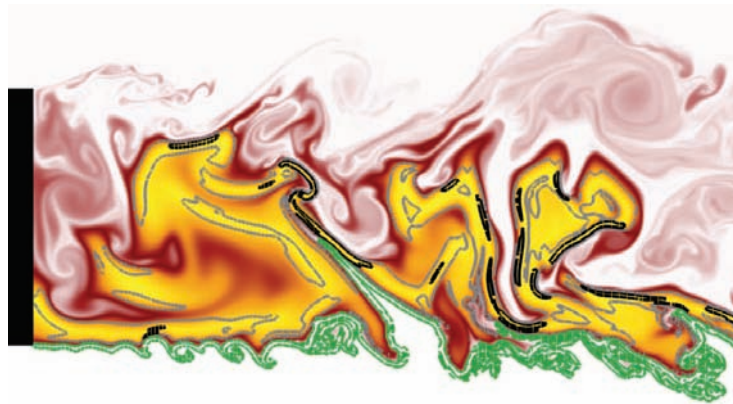
An instantaneous temperature field is presented in Fig. 8 with superimposed iso-contours of density gradient (green) and heat release (black and grey). The first observation is that the flame is not lifted and the hot gases touch the splitter plate. This is certainly partially due to the adiabatic boundary condition imposed at the solid boundary. However, hydrogen / oxygen flames are known to be extremely reactive and experimental evidence under comparable thermodynamic conditions showed that the flame is stabilized very close to the splitter [30]. The temperature field is very convoluted on both oxygen and hydrogen sides and similarly to what was observed in the cold flow, pockets of oxygen are sometimes captured in the hot gases, especially in the second half of the computational domain. This observation allows to speculate that these pockets of warmed-up oxidizer could eventually enter the hydrogen stream and generate a corresponding unsteady heat release. Further analysis of the different combustion regimes is required to substantiate this claim. The green iso-contour highlights the region of high density gradient and allows to distinguish the dense stream from the lighter regions. Contrary to the observations on the cold flow, the large-scale



**Figure 8.** Temperature field with superimposed density gradient (green) and heat-release (black: max heat release of case AVBP\_RG; grey: 10 % of case AVBP\_RG).

wave-like structures are not present in the reacting regime; only smaller convolutions are observed, at least within the computational domain. Such reduction in the vertical extent of the mixing layer under reacting conditions has already been observed at low pressure [31]. Finally one can note that, as expected from the cold-flow scrutiny, mixing and combustion occur in the light stream (i.e. above the green iso-contour).

A close-up view of the vicinity of the splitter is presented in Fig. 9. Again, the burnt gases touch the solid boundary, which is consistent with the adiabatic treatment of the splitter, but not realistic. Regions of strong reaction rate are visible at the edges of the high-temperature pocket, both on the



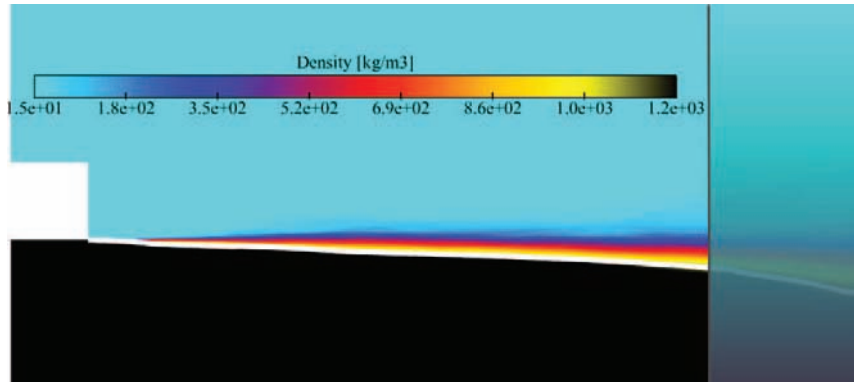
**Figure 9.** Close-up view of the flame stabilization zone behind the splitter. Temperature field (yellow is 3800 K) with superimposed density gradient (green) and heat-release (black: max heat release of case AVBP\_RG; grey: 10 % of case AVBP\_RG).

hydrogen and oxygen sides. This is an indication that turbulent mixing is very intense in this region allowing each species to be transported across the splitter height. At this point in the analysis, this transport mechanism is not clear but animations of the splitter region show that large-scale vortices allow for fresh hydrogen to be transported towards the oxygen stream while at other times, burnt gases with excess oxygen are transported up to the hydrogen stream. It is therefore concluded that even though chemistry plays a key role in the stabilization of such flame, turbulent transport is also

active and influences the combustion regime. It is also foreseen that for fuels with less chemical activity, turbulence could become a key stabilization process.

### Mean flow field

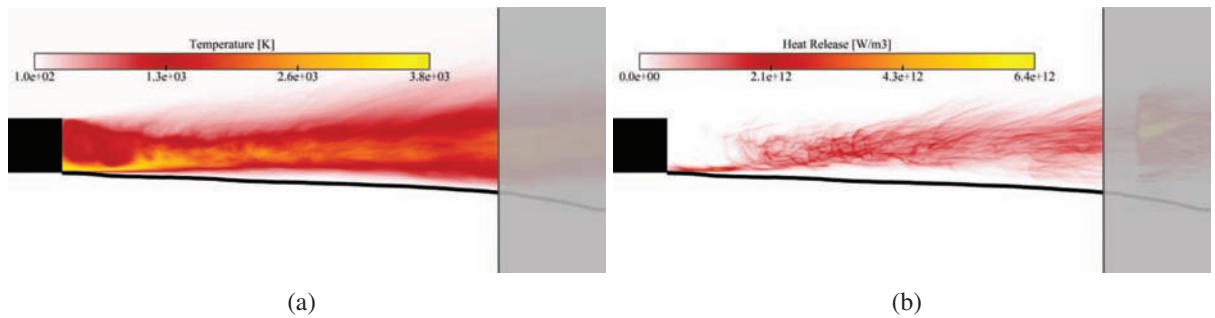
The reacting flow field was averaged over a period of 0.3 millisecond. This corresponds to  $2 \tau_c$ , which is large enough to observe the main characteristics of the mean field even though the average may not be fully converged. Figure 10 shows the resulting average density field, using the same logarithmic scale and iso-contour as for Fig. 6. The outlet region corresponding to the sponge-layer described in Sec. Configuration is grayed out because in the reacting case, the accuracy of the solution is questionable in this region. For the reacting flow, the angle of the dense core is



**Figure 10.** Average density field for the reacting flow. White iso-contour:  $\rho = 0.9 \rho_{O_2}^{in}$ .

$\theta_p = 2$  degrees, which would correspond to a dense core length  $L \sim 30 R$ . This value, based on a relatively short computational domain, is three times as much as for the cold flow. This is attributed to the heat release, which prevents the formation of the large vortices observed in the cold flow (c.f. Fig. 8). The subsequent reduction in turbulent mixing does not seem to be compensated by the consumption rate of oxygen by the flame.

Figure 11(a) and Fig. 11(b) show the mean temperature and heat release fields, respectively. While the the temperature is relatively homogeneous behind the splitter (because of turbulent

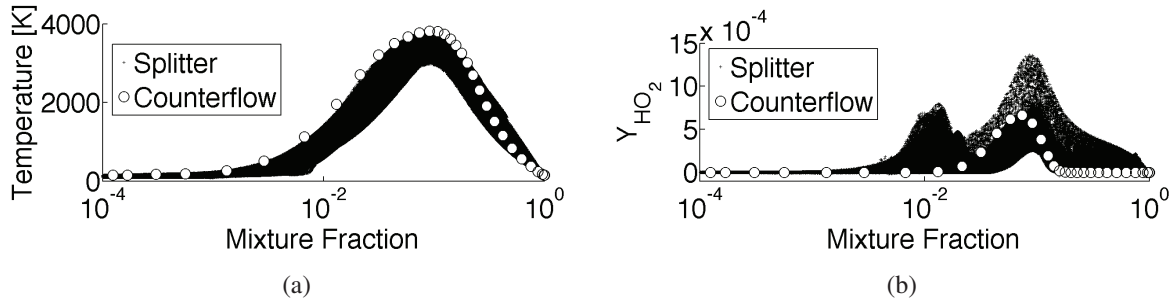


**Figure 11.** Average fields for the reacting flow. (a) Temperature. (b) Heat release. Black iso-contour:  $\rho = 0.9 \rho_{O_2}^{in}$ .

mixing), the mean reaction rate clearly highlights two regions: (1) a relatively steady flame is anchored at the lower corner of the lip (oxygen stream) and (2) an unsteady flame brush, with a vertical extent comparable to that of the splitter, is observed further downstream. It seems that in region (1), chemistry strongly dominates while in region (2), the turbulence level is high enough to transport the flame front. The detailed mechanism of this intricate stabilization is left to a further study.

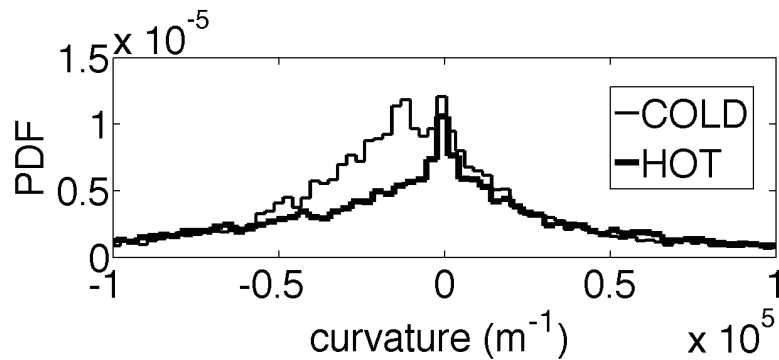
### Flame structure

In an attempt to elucidate the combustion regimes behind the splitter, a scatter-plot of the temperature and mass fraction of  $\text{HO}_2$  is compared to the laminar flame of Sec. Chemistry, on Fig. 12. If the points from the turbulent flame globally follow the laminar counterpart, a number of points are outside the steady laminar behavior indicating a variety of combustion regimes. This is particularly clear on Fig. 12(b), where  $\text{HO}_2$  formation in the oxygen-rich region is noticeable, which might indicate ignition or partial-premixing. This finite-rate chemistry effect needs to be further investigated.



**Figure 12.** Comparison of flame structure versus mixture fraction between the laminar counterflow configuration and the present splitter configuration. (a) temperature and (b)  $\text{HO}_2$  mass fraction.

### Curvature of the density field



**Figure 13.** Curvature PDF of the median density ( $\rho_{1/2} = (\rho_{H_2}^{in} + \rho_{O_2}^{in})/2 \sim 600 \text{ kg.m}^{-3}$ ) iso-contour for the cold and reacting flows.

In order to quantify the visual differences observed in the reacting and non-reacting cases, the probability density function (PDF) of the curvature of a density iso-surface is presented in Fig. 13. The value chosen for the curvature analysis is the iso-surface at the intermediate density between the hydrogen and oxygen streams:  $\rho_{1/2} = (\rho_{H_2}^{\text{in}} + \rho_{O_2}^{\text{in}})/2 \sim 600 \text{ kg.m}^{-3}$ . While the PDF for the reacting flow is roughly symmetric and centered around a zero value, the curvature PDF for the cold flow is double peaked: the peak at  $-10^4 \text{ m}^{-1}$  corresponds to a concave radius of curvature of  $h/5$  in the density iso-contour. This indicates that although visually, the large density waves appears to have a characteristic radius of curvature of  $h$ , they actually consist in a collection of highly curved pieces. The difference between the hot and cold flow curvature pdf also seems to confirm the visual observation that the density waves disappear in the hot flow.

## Conclusions

Simulations of a splitter-plate configuration representative of a cryogenic rocket engine injector have been conducted. The dynamic and thermodynamic conditions are chosen to be representative of a real engine under steady operation: both fuel (hydrogen) and oxidizer (oxygen) are above their critical pressure. Both non-reacting and reacting configurations were computed, on a two-dimensional domain with full resolution of turbulence and chemistry. The cold flow shows that intense turbulence develops downstream the splitter resulting in a highly convoluted region of large density gradient. This interface exhibits both large and small-scale structures similar to experimental direct visualizations. It is also reported that mixing occurs mainly in the light hydrogen stream, which is confirmed under reacting conditions as the flame develops outside the dense oxygen stream. Under reacting condition, the flame is anchored on the splitter, which is due to both the adiabatic boundary condition and the high reactivity of hydrogen. A complex stabilization process involving both chemistry and turbulent transport is suggested but further investigations are required to confirm and quantify this claim. Finally, the larger scales in the high density-gradient magnitude regions seem to disappear under reacting conditions. This work is to be extended to boundary conditions accounting for heat losses at the splitter in order to investigate stabilization mechanisms in a more accurate way.

## Acknowledgment

The funding for this research is provided by Snecma, which is the prime contractor for the European launcher Ariane 5 cryogenic propulsion systems and CNES (Centre National d'Etudes Spatiales), which is the government agency responsible for shaping and implementing France's space policy in Europe. Their support is gratefully acknowledged.

This work was granted access to the high-performance computing resources of CINES under the allocation 2011-c2011025082 made by Grand Equipement National de Calcul Intensif.

## References

- [1] V. Yang. Modeling of supercritical vaporization, mixing, and combustion processes in liquid-fueled propulsion systems. *PROCEEDINGS-COMBUSTION INSTITUTE*, 28(1):925–942, 2000.
- [2] J. Bellan. Theory, modeling and analysis of turbulent supercritical mixing. *Combust. Sci. Tech.*, 178:253–281, 2006.

- [3] N. Okong'o, K. Harstad, and J. Bellan. Direct numerical simulations of O<sub>2</sub>/H<sub>2</sub> temporal mixing layers under supercritical conditions. *AIAA Journal* , 40(5):914–926, 2002.
- [4] Laurent C. Selle, Nora A. Okong'o, Josette Bellan, and Kenneth G. Harstad. Modelling of subgrid-scale phenomena in supercritical transitional mixing layers: An a priori study. *J. Fluid Mech.* , 593:57–91, 2007.
- [5] N. Zong and V. Yang. Cryogenic fluid dynamics of pressure swirl injectors at supercritical conditions. *Physics of Fluids*, 20:056103, 2008.
- [6] J. Oefelein. Mixing and combustion of cryogenic oxygen-hydrogen shear-coaxial jet flames at supercritical pressure. *Combust. Sci. Tech.* , 178(1-3):229–252, 2006.
- [7] S. Palte and R.S. Miller. Analysis of high-pressure hydrogen, methane, and heptane laminar diffusion flames: Thermal diffusion factor modeling. *Combustion and Flame*, 151(4):581–600, 2007.
- [8] N. Gourdain, L.Y.M. Gicquel, G. Staffelbach, O. Vermorel, F. Duchaine, J.-F. Boussuge, and T. Poinso. High performance parallel computing of flows in complex geometries - part 2: applications. *Computational Science and Discovery*, 2(November):015004 (28pp), 2009.
- [9] N. Gourdain, L.Y.M. Gicquel, M. Montagnac, O. Vermorel, M. Gizaix, G. Staffelbach, M. García, J.-F. Boussuge, and T. Poinso. High performance parallel computing of flows in complex geometries - part 1: methods. *Computational Science and Discovery*, 2(November):015003 (26pp), 2009.
- [10] O. Colin and M. Rudgyard. Development of high-order taylor-galerkin schemes for unsteady calculations. *J. Comput. Phys.* , 162(2):338–371, 2000.
- [11] Ding-Yu Peng and Donald B. Robinson. A new two-constant equation of state. *Industrial & Engineering Chemistry Fundamentals*, 15:59–64, February 1976.
- [12] T. H. Chung, L. L. Lee, and K. E. Starling. Applications of kinetic gas theories and multiparameter correlation for prediction of dilute gas viscosity and thermal conductivity. *Industrial & Engineering Chemistry Fundamentals*, 23:8–13, 1984.
- [13] T.H. Chung, M. Ajlan, L.L. Lee, and K.E. Starling. Generalized Multiparameter Correlation for Nonpolar and Polar Fluid Transport Properties. *Industrial & Engineering Chemistry Research*, 27(4):671–679, 1988.
- [14] T. Schmitt, L. Selle, A. Ruiz, and B. Cuenot. Large-eddy simulation of supercritical-pressure round jets. *AIAA Journal* , 48(9):2133–2144, September 2010.
- [15] V. Giovangigli, L. Matuszewski, and F. Dupoirieux. Detailed modeling of planar transcritical H<sub>2</sub>-O<sub>2</sub>-N<sub>2</sub> flames. *Combustion Theory and Modelling*, 15(2):141–182, 2011.
- [16] T. Poinso and S. Lele. Boundary conditions for direct simulations of compressible viscous flows. *J. Comput. Phys.* , 101(1):104–129, 1992.
- [17] M. Baum, T. J. Poinso, and D. Thévenin. Accurate boundary conditions for multicomponent reactive flows. *J. Comput. Phys.* , 116:247–261, 1994.
- [18] N. Okong'o and J. Bellan. Consistent boundary conditions for multicomponent real gas mixtures based on characteristic waves. *Journal of Computational Physics*, 176:330–344, 2002.
- [19] V. Granet, O. Vermorel, T. Leonard, L. Gicquel, , and T. Poinso. Comparison of nonreflecting outlet boundary conditions for compressible solvers on unstructured grids. *Am. Inst. Aeronaut. Astronaut. J.* , 48(10):2348–2364, 2010.
- [20] C. Bogey, O. Marsden, and C. Bailly. Large-eddy simulation of the flow and acoustic fields of a Reynolds number 105 subsonic jet with tripped exit boundary layers. *Physics of Fluids*,

23:035104, 2011.

- [21] P. Boivin, C. Jiménez, and A. L. Sánchez F.A. Williams. An explicit reduced mechanism for H<sub>2</sub>-air combustion. *Proceedings of the Combustion Institute*, 33:517–523, 2011.
- [22] M.V. Petrova and F.A. Williams. A small detailed chemical-kinetic mechanism for hydrocarbon combustion. *Combust. Flame*, 144(3):526 – 544, 2006.
- [23] *NIST-JANAF Thermochemical Tables*. National Institute of Standards and Technology, 1998.
- [24] D. Goodwin. *Cantera: An object-oriented software toolkit for chemical kinetics, thermodynamics, and transport processes*”, Caltech, Pasadena, 2009. [Online]. <http://code.google.com/p/cantera>, 2002.
- [25] L. Pons, N. Darabiha, S. Candel, T. Schmitt, and B. Cuenot. The structure of multidimensional strained flames under transcritical conditions. *Comptes rendus-Mécanique*, 337(6-7):517–527, 2009.
- [26] G. Ribert, N. Zong, V. Yang, L. Pons, N. Darabiha, and S. Candel. Counterflow diffusion flames of general fluids: Oxygen/hydrogen mixtures. *Combustion and Flame*, 154(3):319–330, 2008.
- [27] J.C. Oefelein. Thermophysical characteristics of shear-coaxial LOX-H<sub>2</sub> flames at supercritical pressure. *Proceedings of the Combustion Institute*, 30(2):2929–2937, 2005.
- [28] B. Chehroudi, D. Talley, and E. Coy. Visual characteristics and initial growth rate of round cryogenic jets at subcritical and supercritical pressures. *Physics of Fluids*, 14(2):850–861, february 2002.
- [29] M. Oschwald, J. J. Smith, R. Branam, J. Hussong, A. Schik, B. Chehroudi, and D. Talley. Injection of fluids into supercritical environments. *Combust. Sci. Tech.*, 178:49–100, 2006.
- [30] G. Singla, P. Scouffaire, JC Rolon, and S. Candel. Flame stabilization in high pressure LO<sub>x</sub>/GH<sub>2</sub> and GCH<sub>4</sub> combustion. *Proceedings of the Combustion Institute*, 31(2):2215–2222, 2007.
- [31] P.H. Renard, D. Thévenin, JC Rolon, and S. Candel. Dynamics of flame/vortex interactions. *Progress in energy and combustion science*, 26(3):225–282, 2000.