



HAL
open science

Ecophysiological Responses of *Nothofagus obliqua* Forests to Recent Climate Drying Across the Mediterranean-Temperate Biome Transition in South-Central Chile

Rocío Urrutia-jalabert, Jonathan Barichivich, Paul Szejner, Vicente Rozas,
Antonio Lara

► **To cite this version:**

Rocío Urrutia-jalabert, Jonathan Barichivich, Paul Szejner, Vicente Rozas, Antonio Lara. Ecophysiological Responses of *Nothofagus obliqua* Forests to Recent Climate Drying Across the Mediterranean-Temperate Biome Transition in South-Central Chile. *Journal of Geophysical Research: Biogeosciences*, 2023, 128 (4), 10.1029/2022jg007293 . hal-04087248

HAL Id: hal-04087248

<https://hal.science/hal-04087248>

Submitted on 3 May 2023

HAL is a multi-disciplinary open access archive for the deposit and dissemination of scientific research documents, whether they are published or not. The documents may come from teaching and research institutions in France or abroad, or from public or private research centers.

L'archive ouverte pluridisciplinaire **HAL**, est destinée au dépôt et à la diffusion de documents scientifiques de niveau recherche, publiés ou non, émanant des établissements d'enseignement et de recherche français ou étrangers, des laboratoires publics ou privés.

JGR Biogeosciences

RESEARCH ARTICLE

10.1029/2022JG007293

Key Points:

- Despite a common climate trend, the response of *N. obliqua* to climate change is not uniform, but rather specific to the stand and site
- Tree growth and $\delta^{18}\text{O}$ have been coupled during the megadrought in the northernmost site, but rainfall does not influence this pattern
- *N. obliqua* northern forests are able to maintain radial growth rates and acclimate to persistent droughts by tapping deeper water sources

Supporting Information:

Supporting Information may be found in the online version of this article.

Correspondence to:

R. Urrutia-Jalabert,
rocio.urrutia@uaysen.cl

Citation:

Urrutia-Jalabert, R., Barichivich, J., Szejner, P., Rozas, V., & Lara, A. (2023). Ecophysiological responses of *Nothofagus obliqua* forests to recent climate drying across the Mediterranean-Temperate biome transition in south-central Chile. *Journal of Geophysical Research: Biogeosciences*, 128, e2022JG007293. <https://doi.org/10.1029/2022JG007293>

Received 18 NOV 2022

Accepted 2 MAR 2023

Ecophysiological Responses of *Nothofagus obliqua* Forests to Recent Climate Drying Across the Mediterranean-Temperate Biome Transition in South-Central Chile

Rocío Urrutia-Jalabert^{1,2,3} , Jonathan Barichivich^{4,5} , Paul Szejner⁶ , Vicente Rozas⁷, and Antonio Lara^{2,3,8}

¹Departamento de Ciencias Naturales y Tecnología, Universidad de Aysén, Coyhaique, Chile, ²Laboratorio de Dendrocronología y Cambio Global, Instituto de Conservación, Biodiversidad y Territorio, Facultad de Ciencias Forestales y Recursos Naturales, Universidad Austral de Chile, Valdivia, Chile, ³Centro de Ciencia del Clima y la Resiliencia, CR2, Santiago, Chile, ⁴Laboratoire des Sciences du Climat et de l'Environnement, IPSL, CRNS/CEA/UVSQ, Gif-Sur-Yvette, France, ⁵Instituto de Geografía, Pontificia Universidad Católica de Valparaíso, Valparaíso, Chile, ⁶Bioeconomy and Environment Unit, Natural Resources Institute Finland, Helsinki, Finland, ⁷IuFOR-EiFAB, Área de Botánica, Campus Duques de Soria, Universidad de Valladolid, Soria, Spain, ⁸Fundación Centro de los Bosques Nativos FORECOS, Valdivia, Chile

Abstract The forests of south-central Chile are facing a drying climate and a megadrought that started in 2010. This study addressed the physiological responses of five *Nothofagus obliqua* stands across the Mediterranean-Temperate gradient (35.9°–40.3°S) using carbon isotope discrimination ($\Delta^{13}\text{C}$) and intrinsic water use efficiency (iWUE) in tree rings during 1967–2017. Moreover, tree ring $\delta^{18}\text{O}$ was evaluated in the northernmost site to better understand the effects of the megadrought in this drier location. These forests have become more efficient in their use of water. However, trees from the densest stand are discriminating more against ^{13}C , probably due to reduced photosynthetic rates associated with increasing light competition. The strongest associations between climate and $\Delta^{13}\text{C}$ were found in the northernmost stand, suggesting that warmer and drier conditions could have reduced ^{13}C discrimination. Tree growth in this site has not decreased, and $\delta^{18}\text{O}$ was negatively related to annual rainfall. However, a shift in this relationship was found since 2007, when both precipitation and $\delta^{18}\text{O}$ decreased, while correlations between $\delta^{18}\text{O}$ and growth increased. This implies that tree growth and $\delta^{18}\text{O}$ are coupled in recent years, but precipitation is not the cause, suggesting that trees probably changed their water source to deeper and more depleted pools. Our research demonstrates that forests are not reducing their growth in central Chile, mainly due to a shift toward the use of deeper water sources. Despite a common climate trend across the gradient, there is a non-uniform response of *N. obliqua* forests to climate drying, being their response site-specific.

Plain Language Summary The forests of south-central Chile are facing a drying climate and a megadrought that started in 2010. This study addressed the physiological responses of five *Nothofagus obliqua* stands across the Mediterranean-Temperate gradient (35.9°–40.3°S) to climate drying using stable isotopes in tree rings during the period 1967–2017. These forests have become more efficient in their use of water. However, trees from the densest stand are showing a poor adaptability to climate change, probably due to a decrease in photosynthetic rates associated with the increase in competition. Our research demonstrates for the first time that forests are not reducing their growth in central Chile, mainly due to a shift toward the use of deeper water sources. However, it is not certain until which point this acclimation will persist as these pools get depleted in the future with continued drying. Despite a common climate trend across the latitudinal gradient, this research points to a non-uniform response of *N. obliqua* second-growth forests to a drying climate, being their response stand and site-specific.

1. Introduction

Rising CO_2 concentrations have stimulated productivity (Granda et al., 2017; Huang et al., 2017; Martínez-Vilalta et al., 2008; Soule & Knapp, 2006) and water use efficiency in many forested ecosystems worldwide (Andreu-Hayles et al., 2011; Arco Molina et al., 2019; Gómez-Guerrero et al., 2013; Tognetti et al., 2014; Urrutia-Jalabert et al., 2015; Van Der Sleen et al., 2015). However, the increased risk of low precipitation and heat waves, and the more frequent occurrence of intense and severe droughts associated to global warming (Chiang et al., 2021; Morales et al., 2020), have led to decreased growth, die-off events and a high vulnerability of forests

to climatically-induced tree mortality (Adams et al., 2017; Allen et al., 2010, 2015; Anderegg et al., 2019; Szejnjer et al., 2020; Zhao & Running, 2010).

Several studies have reported how changes in climate conditions and drought occurrence have reduced tree growth and forest productivity in temperate regions of the Northern Hemisphere (e.g., Cailleret et al., 2017; Cavin & Jump, 2017; Gazol, Camarero, et al., 2017; Gazol, Ribas, et al., 2017; Gazol et al., 2018; Serra-Maluquer et al., 2019), and in southern South America (e.g., Christie et al., 2011; Fajardo et al., 2019; Rodríguez-Catón et al., 2015; Suárez et al., 2015; Urrutia-Jalabert et al., 2015; Venegas-González et al., 2018, 2019; Villalba et al., 2012). Typically, radial growth of widely distributed tree species tends to be more sensitive to drought in equatorward than poleward populations, but sometimes the opposite can occur (Camarero et al., 2021). Mediterranean forests have shown a higher capacity to recover their growth after a drought than temperate forests, which have a lower recovery, but tend to resist droughts better (Gazol et al., 2018; Urrutia-Jalabert et al., 2021).

The impacts of changing environmental conditions on tree growth and physiological responses of forests over time can be assessed by quantifying annual tree-ring growth and stable isotopes integrated in tree-ring cellulose. Measurements of the stable isotopes of carbon ($\delta^{13}\text{C}$) and oxygen ($\delta^{18}\text{O}$) in wood cellulose are useful to detect and understand the physiological drivers of changes in intrinsic water use efficiency in forests through time (Guerrieri et al., 2019; Lévesque et al., 2014). Intrinsic Water use Efficiency (iWUE) is the relationship between carbon assimilation (A) and stomatal conductance (gs) (Farquhar et al., 1982, 1989). Several studies have reported positive trends in iWUE in forests around the world over the past few decades (Camarero & Fajardo, 2017; Franks et al., 2013; Guerrieri et al., 2019; Lavergne et al., 2016; Lévesque et al., 2014; Urrutia-Jalabert et al., 2015). These positive trends in iWUE can be attributed to an increase in photosynthetic rates due to rising atmospheric CO_2 , a decrease in stomatal conductance, or a combination of both mechanisms (Andreu-Hayles et al., 2011). It has been shown that in mesic forests the increase of photosynthetic rates with rising CO_2 has mostly driven the increase in water use efficiency, with stomatal conductance reductions limited to those species that face moisture limitations (Guerrieri et al., 2019). In the case of the temperate forests of southern South America, different studies have found mostly an increase in iWUE over the last few decades, which was attributed to either physiological mechanism (Arco Molina et al., 2019; Fajardo et al., 2019; Lavergne et al., 2016; Puchi et al., 2021; Urrutia-Jalabert et al., 2015).

Changes in iWUE can be better disentangled when $\delta^{18}\text{O}$ is jointly analyzed, since it varies independently of carbon isotope fractionation during photosynthesis (Roden et al., 2022) and can be a proxy for gs under certain environmental conditions if the effect of source water signals is accounted for. In this setting, an increase in both $\delta^{13}\text{C}$ and $\delta^{18}\text{O}$ through time suggests that increases in iWUE are driven by decreased stomatal conductance rather than by increased photosynthetic activity rates, since $\delta^{18}\text{O}$ can be negatively related to gs (Farquhar & Lloyd, 1993; Roden et al., 2022). The $\delta^{18}\text{O}$ in cellulose is influenced by the isotopic content of source water, the leaf evaporative enrichment effect driven by relative humidity, and the proportion of phloem sugars that exchange with xylem water during cellulose formation (Roden et al., 2000). These three factors are integrated at the cambium during xylogenesis (Song, Clark, & Helliker, 2014). During cellulose formation, source water provides oxygen atoms that exchange with carbohydrates delivered by the phloem, thus mixing the isotopically depleted upward-moving water with the enriched downward-moving photosynthate (Sternberg et al., 1986). The rate of triose phosphate cycling is related to the exchange rate of carbonyl oxygen atoms during cellulose biosynthesis (Barbour & Farquhar, 2000; Song, Farquhar, et al., 2014). Although the environmental and physiological factors contributing to $\delta^{18}\text{O}$ variability in trees can be complex to unravel empirically, $\delta^{18}\text{O}$ in cellulose can provide information about the water sources trees utilize over time (Sargeant et al., 2019). Thus, combining tree-ring isotopes with radial growth can aid in distinguishing between leaf-level and belowground physiological adjustments experienced by forests in response to climate change (Barichivich et al., 2021; Castruita-Esparza et al., 2019).

The mid-latitudes of the Southern Hemisphere are experiencing a gradual process of subtropical dryland expansion with climate change (Villamayor et al., 2021). The temperate and mediterranean Andes of South America are located right on this sensitive region of change, which marks the biome transition from Mediterranean to Temperate climate in Chile. The region has experienced a moderate warming and a sustained precipitation decline during recent decades, linked to changes in tropical and high-latitude atmospheric circulation (Falvey & Garreaud, 2009; González-Reyes & Muñoz, 2013; Lara et al., 2020; Morales et al., 2020; Trenberth et al., 2007; Urrutia-Jalabert et al., 2015; Villamayor et al., 2021). The most severe and long-lasting drought over the last

millennium (locally known as megadrought) has been ongoing since 2010 (Barichivich et al., 2020; Garreaud et al., 2020), with average precipitation deficits ranging between 25% and 45% and up to 80% in some places during 2019 (SEGRA, 2020). This unprecedented megadrought has had catastrophic effects on forest ecosystems (Miranda et al., 2020; Venegas-González et al., 2022), fire regimes (Bowman et al., 2019), riverflow and water reservoir levels (Barría et al., 2021).

A recent study across the Mediterranean-Temperate climate transition in south-central Chile found that radial growth of a widely distributed deciduous tree species of southern beech (*Nothofagus obliqua*), was positively related to precipitation and negatively related to maximum temperature along most of the gradient (Urrutia-Jalabert et al., 2021). Moreover, the two northernmost, more Mediterranean stands were among the most resilient to repeated droughts and tree growth in these sites had not been strongly affected by the current megadrought (Urrutia-Jalabert et al., 2021). This suggests that Mediterranean populations of the species may have different functional responses to adapt to drying and warming conditions than temperate populations.

Research focused on assessing the functional response of forests to climate change using carbon and oxygen stable isotopes of wood cellulose in Chile, is very scarce. Therefore, conducting this type of study brings an opportunity to better understand the effects of climate change on these transitional forests. The present study aims to go beyond what tree growth alone can reveal, evaluating physiological and functional changes in five of the nine *Nothofagus obliqua* second-growth stands studied by Urrutia-Jalabert et al. (2021). These changes were assessed by quantifying carbon isotope discrimination in annual tree rings and their associated iWUE through time. Additionally, oxygen isotopes were also analyzed for the northernmost and drier site to understand the functional behavior of the species under Mediterranean conditions. The specific objectives of this study were to: (a) evaluate changes in carbon isotope discrimination and iWUE in five *Nothofagus obliqua* secondary stands across the Mediterranean-Temperate gradient in south-central Chile during recent decades, including the megadrought period; (b) assess the physiological behavior of a Mediterranean stand by evaluating the oxygen isotope composition recorded in tree rings during recent decades, including the megadrought period and (c) evaluate which are the main climate variables related to the physiological performance of *Nothofagus* stands across the Mediterranean-Temperate region.

2. Methods

2.1. Study Sites

Five secondary and even-aged stands along a latitudinal gradient of almost five degrees in south-central Chile (35.9° to 40.3°S) were assessed in this study. These stands were selected among the nine stands used previously by Urrutia-Jalabert et al. (2021) to study the resilience of growth to droughts. The selected stands were from north to south: Melado (MEL, 35.9°S) in Maule Region, Rucamanqui (RUC, 37.2°S) in Bío Bío Region, Namuncai (NAM, 39.2°S) in Araucanía Region, and San Pablo de Tregua (SPT, 39.6°S) and Riñinahue (RIN, 40.3°S) in Los Ríos Region (Figure 1 and Table S1 in Supporting Information S1 for site characteristics). The stands covered an elevation range from 156 (RIN) to 1,168 m a.s.l. (MEL) and were mostly dominated by *N. obliqua*, accounting for more than 70% of the total basal area (Table S1 in Supporting Information S1, Donoso et al., 1993; Gezan et al., 2007). Stand densities varied between 390 trees/ha in MEL and 1,100 trees/ha in RUC (Table S1 in Supporting Information S1, Urrutia-Jalabert et al., 2021). Climate in the area ranged from Mediterranean in the north to Temperate with some Mediterranean summer influence in the south, with differences in rainfall mostly given by the amount of precipitation falling during spring-summer (20% and 38% in the north and south, respectively) and summer (4.7% and 17% in the north and south, respectively, Table S1 in Supporting Information S1, Urrutia-Jalabert et al., 2021).

2.2. Tree-Ring Stable Isotopes Chronologies

Five cores per site (MEL, RUC, NAM, SPT, and RIN) were selected for the isotopic analyses from the tree-ring chronologies developed by Urrutia-Jalabert et al. (2021). These tree-ring chronologies were developed by standardizing the raw tree-ring width measurements with a negative exponential curve or a regression line using the ARSTAN44xp program (Cook & Krusic, 2005; Urrutia-Jalabert et al., 2021). The maximum length of tree-ring chronologies, which were a good representation of an approximate stand age (cores up to the bole center at 1.3 m height), were the following: 177, 62, 72, 62, and 51 years for MEL, RUC, NAM, SPT, and RIN, respectively

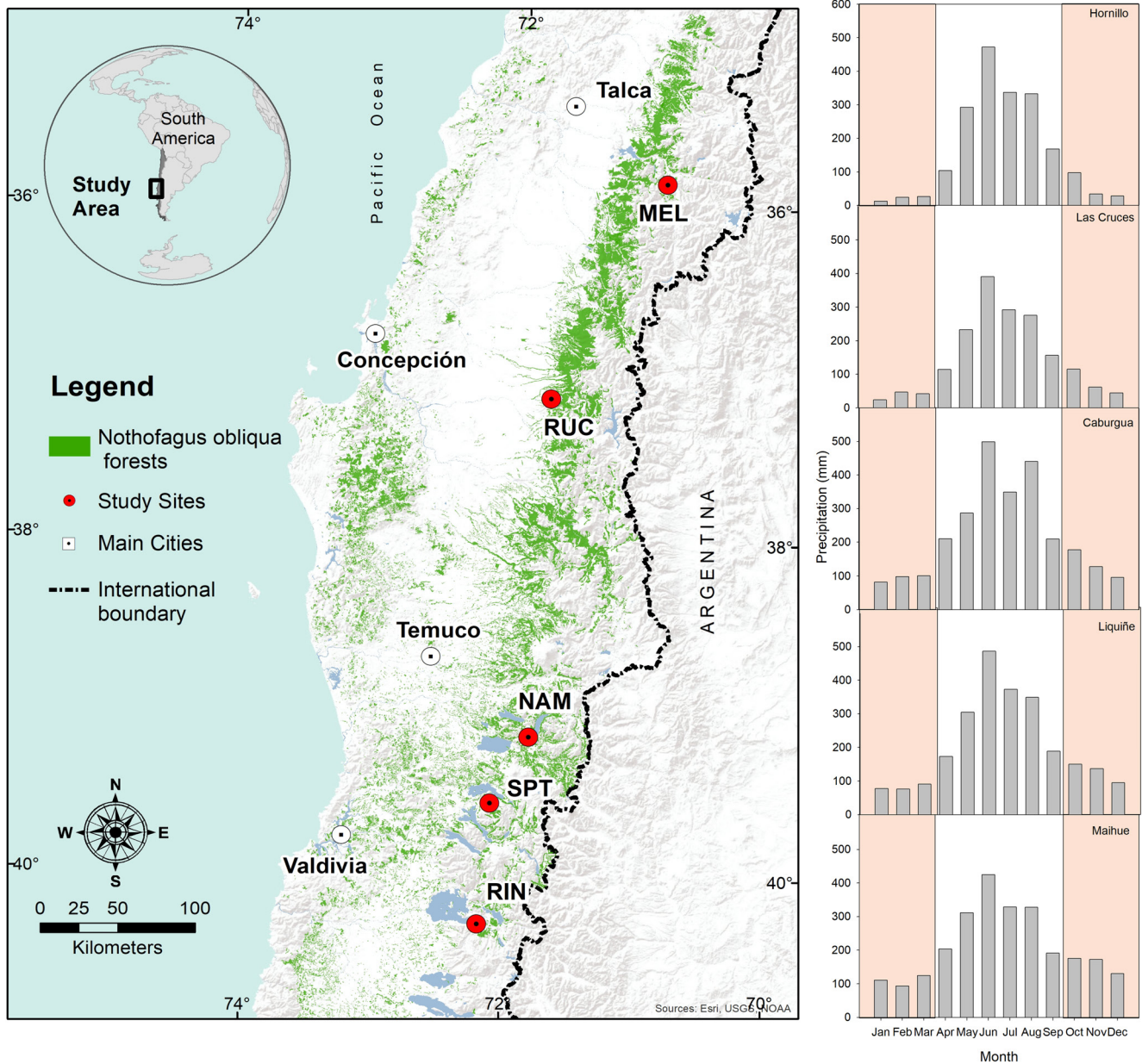


Figure 1. Left: Map showing the distribution of *Nothofagus obliqua* forests and the location of the five study sites: MEL (Melado), RUC (Rucamanqui), NAM (Namuncai), SPT (San Pablo de Tregua), RIN (Riñinahue). Right: monthly precipitation distribution at the closest meteorological station to each study site (period 1995–2015), from north to south. The 6 months with lower precipitation (October–March) are shown with orange shading.

(Table S1 in Supporting Information S1, Urrutia-Jalabert et al., 2021). Annual rings for the common period 1967–2017 were cut using a razor blade under a stereo microscope. At each site, rings from the same year were pooled for cellulose extraction. Carbon and oxygen isotopic analysis of the cellulose was carried out on a Thermo Delta V isotope ratio mass spectrometer (IRMS) interfaced to a NC2500 elemental analyzer for Carbon and to a Temperature Conversion Elemental Analyzer (TC/EA) for Oxygen, at the Cornell University Stable Isotope Laboratory (COIL).

The carbon isotope ratio ($^{13}\text{C}/^{12}\text{C}$) or $\delta^{13}\text{C}$ was expressed in per mill with reference to a standard with a known isotopic ratio. The $\delta^{13}\text{C}$ was expressed as:

$$\delta^{13}\text{C}(\text{‰}) = \frac{(\text{R}_{\text{sample}} - 1)}{\text{R}_{\text{standard}}} \times 1000$$

R_{sample} is the carbon ratio of every sample and R_{standard} is the carbon ratio corresponding to the standard Vienna Pee Dee Belemnite or VPDB (McCarroll & Loader, 2004). The precision of the instrument, measured with an internal plant standard was 0.07‰. The carbon isotopic discrimination ($\Delta^{13}\text{C}$) that results from the preferential election of ^{12}C over ^{13}C during photosynthesis was obtained through the formula of Farquhar et al. (1982):

$$\Delta^{13}\text{C} = \frac{\delta^{13}\text{C}_{\text{atm}} - \delta^{13}\text{C}_{\text{tree}}}{1 + \frac{\delta^{13}\text{C}_{\text{tree}}}{1000}}$$

$\delta^{13}\text{C}_{\text{atm}}$ and $\delta^{13}\text{C}_{\text{tree}}$ correspond to the isotopic value of atmospheric CO_2 and the ratio measured in tree rings, respectively. Carbon discrimination is linearly related to the ratio of intercellular (ci) to ambient (ca) CO_2 concentration as follows (Farquhar et al., 1982):

$$ci = \frac{\Delta^{13}\text{C} - a}{b - a} * ca$$

Where $\Delta^{13}\text{C}$ is the isotopic discrimination of the sample estimated with the equation above, the parameter “a” is the fractionation associated with CO_2 diffusing through stomata (4.4 ‰), “b” is the fractionation associated with the RuBisCO enzyme (27 ‰) and ca is the annual atmospheric CO_2 concentration (ppm). Finally, using the estimated ci , the intrinsic water use efficiency (iWUE) can be calculated as the ratio of assimilation to stomatal conductance as follows:

$$i\text{WUE} = \frac{A}{g_s} = \frac{g_{\text{CO}_2}(ca - ci)}{g_s} = \frac{ca - ci}{1.6}$$

Where A is carbon assimilation, g_s is stomatal conductance of water, g_{CO_2} is stomatal conductance to CO_2 , and the factor 1.6 is the ratio of diffusivity of water vapor to CO_2 . $\delta^{13}\text{C}_{\text{atm}}$ and ca were obtained from (McCarroll & Loader, 2004) for the period 1967–1997, and for the rest of the period values were obtained from Dr. Pieter Tans, NOAA/GML (gml.noaa.gov/ccgg/trends/) and Dr. Ralph Keeling, Scripps Institution of Oceanography (scrippsco2.ucsd.edu/).

The juvenile effect refers to changes in the isotopic composition between young and mature trees due to differences in height and in canopy and subcanopy conditions (Monserud & Marshall, 2001). Since *N. obliqua* is a pioneer, shade-intolerant species that grows in open areas and considering that only dominant trees were sampled, this study did not consider the juvenile effect. This is supported by recent research showing that height effects on the carbon isotopic composition (which operate independently of the shade tolerance of a species) are mostly non-significant when considering sun-exposed saplings of various temperate tree species from the Northern Hemisphere (Vadeboncoeur et al., 2020). Additionally, it has been reported that shade-intolerant oak trees from the UK show no significant trend in the carbon isotope ratio after removing the first five years (McCarroll et al., 2020). However, it should be noted that the juvenile effect could potentially be an issue for the southernmost site RIN, but as seen in Section 3.1, the carbon discrimination does not show a significant trend. It is also worth noting that there could be a mix of different ages in the early decades, minimizing any possible trend induced by the juvenile effect (Monserud & Marshall, 2001).

The oxygen isotope ratio ($^{18}\text{O}/^{16}\text{O}$) or $\delta^{18}\text{O}$ was measured only for the northernmost site (MEL) and was also expressed in per mill with reference to the international Vienna Standard Mean Ocean Water (VSMOW). The precision of the instrument determined as the standard deviation of measurements using an internal wood standard was 0.25‰. Isotope corrections were done using linear regression of all $\delta^{18}\text{O}$ data using two international standards (IAEA 601 and IAEA 602).

2.3. Data Analyses

Temporal trends in $\Delta^{13}\text{C}$ and iWUE were assessed using linear regressions and the Mann-Kendall non-parametric test in cases where data did not comply normality. Moreover, the three well-known theoretical scenarios for gas exchange under rising CO_2 (constant ci , constant ci/ca and constant $ca-ci$) of Saurer et al. (2004) were used as a guideline to interpret the observed non-linear changes in iWUE over the study period. These scenarios differ only in the degree in which the increase in ci follows the increase in ca (either not at all, in a proportional way, or at the same rate, respectively). Mean ci over 1968–1979 was used as the starting point to evaluate the non-linear trends

using generalized additive models (GAM). To determine shifts in the iWUE series, a Rodionov regime shift test (Rodionov, 2004) with a cut-off length of 10, a Huber's weight parameter of 1 and a significance level of 0.05 was applied to series from each site using a MS Excel program (<https://www.beringclimate.noaa.gov/regimes/>).

In order to understand the relationship between tree growth and physiological responses as inferred from stable isotopes in tree rings, the Pearson's correlation coefficient was used to relate the standardized tree-ring width chronologies reported by Urrutia-Jalabert et al. (2021) and $\Delta^{13}\text{C}$ and $\delta^{18}\text{O}$. In addition, regression analyses were used to relate the basal area increment (BAI), available from Urrutia-Jalabert et al. (2021), with iWUE. BAI chronologies help to reduce the age-size effect associated with the geometry of the stems, as well to preserve the low frequency variability (Biondi, 1999).

To determine the association between climate and the isotopic composition in tree rings, correlation coefficients were calculated between $\Delta^{13}\text{C}$ and $\delta^{18}\text{O}$ chronologies and precipitation and maximum temperatures. When the time series of tree rings or climate presented significant positive or negative trends through time, the residuals of the adjusted linear regression were used to obtain correlations without the influence of trends. The climate records used were regional averages (Maule, Bío Bío, Araucanía, and Los Ríos regions) developed by Urrutia-Jalabert et al. (2021) from several stations. Records of annual or seasonal precipitation and maximum temperatures were calculated as normalized departures with zero mean and unit variance (z scores).

A bivariate response surface between tree-ring width variability and the joint variability of the carbon and oxygen isotopes (Barichivich et al., 2021) was used to aid the mechanistic interpretation of the coupled growth and physiological responses at the northernmost site under a drier Mediterranean climate (MEL). Following the procedure for the growth-isotope tree-ring triplet of Barichivich et al. (2021), a smoothed response surface was fitted using a data-adaptive bivariate generalized additive model (GAM) implemented with the “mgcv” package (Wood, 2017) in the R environment (R Development Core T., 2014).

3. Results

3.1. Carbon and Oxygen Isotopes Chronologies

For most sites, $\Delta^{13}\text{C}$ showed a negative trend, except for the second northernmost site RUC. However, only the mid-gradient site NAM showed a significant negative trend ($p < 0.01$, Figure 2). Additionally, an apparent break-point in the $\Delta^{13}\text{C}$ trend at NAM was detected in 1989 (Segmented Package, Mugeo, 2008).

iWUE increased significantly at all sites (Figure S1 in Supporting Information S1). The percent change in iWUE calculated as the mean of 2013–2017 compared to the mean of the early period 1968–1972, was not uniform across the gradient. It ranged from 14% in the second northernmost site RUC to 47% in the site south of it (NAM), with 25%–28% increase in the two southernmost temperate sites (RIN and SPT, respectively) and 32% in the northernmost Mediterranean site (MEL).

When nonlinear trends in iWUE were extracted using the GAM adjustment and compared with the three response to CO_2 scenarios proposed by Saurer et al. (2004), responses varied among sites. The mid-gradient NAM site outstood as the one with the steepest increase in iWUE since the 1990s with values well above the constant ci scenario (Figure 3). In addition, the iWUE of the northernmost site MEL was also above this scenario but showed a stabilization around the 1990s and an increase again around the 2000s (Figure 3). The second northernmost site RUC had a steep rise above the constant ci scenario until the mid-1990s and a decrease afterward to finally reach the constant ci/ca scenario. Finally, the southern SPT site showed a slow increase between the constant ci-ca and ci/ca up to the mid-1990s and a steeper increase up to the constant ci scenario during recent years (Figure 3), and the southernmost RIN site showed a permanent increase similar to the constant ci scenario. When the Rodionov's test was applied to find shifts in mean iWUE values, the MEL site showed significant shifts in 1987 and 2007, RUC in 1995, NAM in 1992 and 2007, SPT in 2004 and RIN in 1996 (Figure S1 in Supporting Information S1). Changes in mean values in the 1990s were observed in RUC, NAM, and RIN, while MEL, NAM and SPT recorded the changes in mean values after the 2000s.

No significant temporal trends in oxygen isotopes ($\delta^{18}\text{O}$) were observed in MEL for the period 1970–2017.

3.2. Tree Growth and Isotopes

Significant correlations between tree growth (standardized tree-ring chronologies) and $\Delta^{13}\text{C}$ were only found in the northernmost site MEL and the mid-gradient site NAM (Figure 4). There was no significant relationship

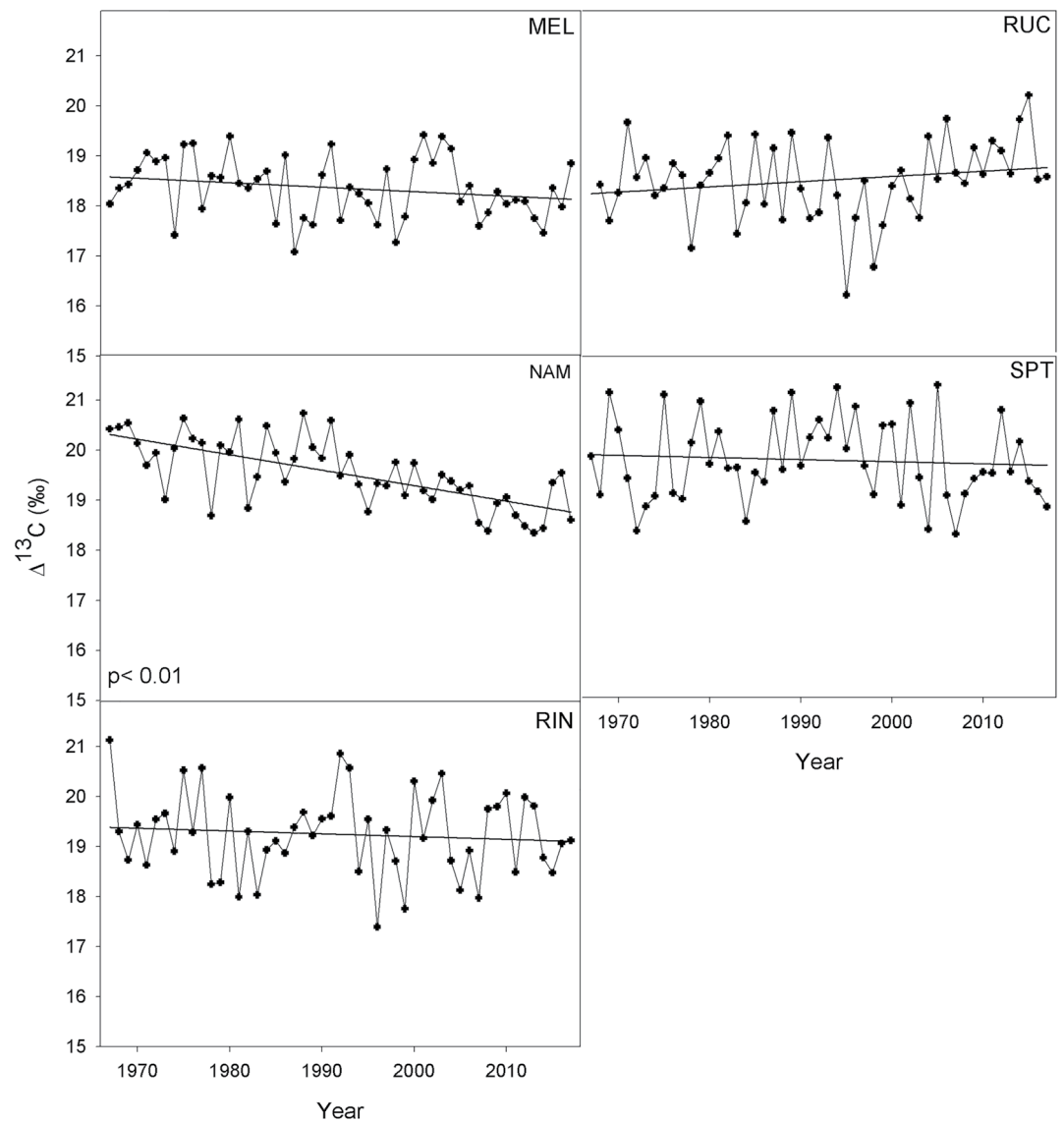


Figure 2. Annual carbon isotopes discrimination $\Delta^{13}\text{C}$ (‰) and fitted linear trends for the period 1967–2017 in five *Nothofagus obliqua* stands across a latitudinal gradient in south-central Chile. See Figure 1 for site abbreviations. The only significant negative slope for $\Delta^{13}\text{C}$ was found in the NAM site (R^2_{adj} : 0.46, $p < 0.01$).

between tree growth and $\delta^{18}\text{O}$ in MEL, but there was a clear change in their relationship since around 2007 (from $r = -0.29$, period 1970–2006, $p > 0.05$ to $r = 0.72$, period 2007–2017, $p < 0.01$). Since this date, low growth coincided with low enrichment $\delta^{18}\text{O}$ (Figure 5).

The bivariate surface response of tree-ring width as a function of the variability of both isotopes at the northernmost site MEL reveals the relationships of tree growth with environmental variability (temperature and drought stress) and stomatal responses, and also deviations from expectation in these water-limited locations that can be attributed to changes in source water (Figure 6). The resulting growth-isotope triplet shows that ring width has a positive and significant linear relationship with $\Delta^{13}\text{C}$ ($r = 0.38$, $p < 0.001$), but no significant linear relation with $\delta^{18}\text{O}$, suggesting that growth is moderately coupled with stomatal activity. However, the overall isotopic variability is not intercorrelated ($r = 0.10$, $p > 0.05$) and the pattern of $\delta^{18}\text{O}$ variability in tree rings suggests a changing influence from variations in source water $\delta^{18}\text{O}$ during the megadrought since 2007. For instance, extreme drought years prior to the megadrought in 1998 and 1999 map into the tree-ring triplet as years of extremely low growth associated with the highest stomatal closure (i.e., highly enriched $\delta^{18}\text{O}$ and low carbon discrimination) as it would be expected under dry conditions. In contrast, during the megadrought (2007–2017) tree growth has not

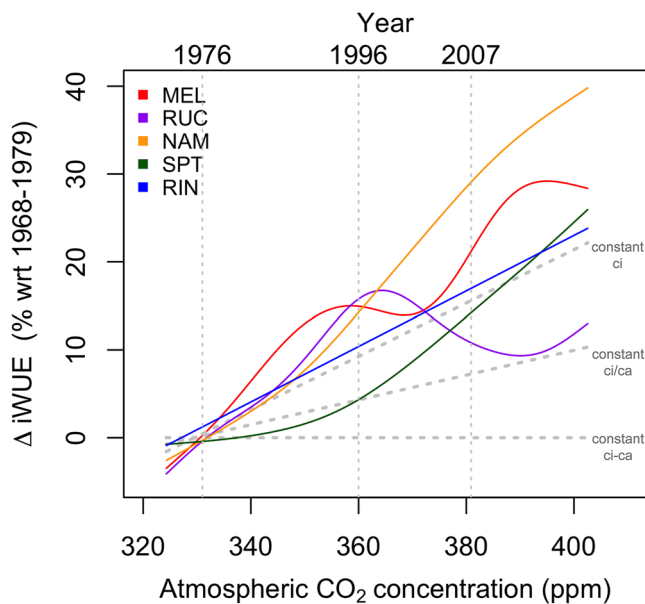


Figure 3. Change in iWUE with respect to the period 1968–1979 for the study sites. The curves represent the non-linear trends from a generalized additive model (GAM) fitted to the data. The change in iWUE under the three theoretical gas-exchange scenarios proposed by Saurer et al. (2004) are shown as dotted gray lines.

declined, and the isotopic variability indicates low stomatal limitation of gas exchange. Only in 2014 tree growth declined, but it was associated with very low stomatal closure. The contrasting growth-isotope response between the protracted megadrought and the extreme droughts in 1998–1999 indicates that trees have shifted their water use to deeper, less enriched source water in the soil profile in recent years, as an acclimation to the megadrought.

Negative relationships between iWUE and BAI (cm^2) were only significant in RUC, NAM and SPT (Figure 7). In the mid-gradient site NAM, increases in iWUE were strongly negatively associated with a decrease in BAI (Figure 7). For the northernmost site MEL and the southernmost site RIN, increases in iWUE during recent decades were not associated with reductions in tree growth. For MEL, the largest iWUE values in the whole studied period ($>96 \mu\text{mol mol}^{-1}$) were observed in recent years (since 2007) and they were associated with very high (years 2010 and 2011) and very low BAI values (year 2014, Figure 7). For the second northernmost RUC site, it is interesting to note that almost all the years with low BAI were since 2007 and that they were not associated with high iWUE values.

3.3. Climate-Isotopes Relationships

The most important significant relationships between isotopic signatures and climate variability were found at the northernmost site MEL. $\Delta^{13}\text{C}$ from MEL was positively related to spring-summer precipitation ($p < 0.01$) and negatively related to spring-summer maximum temperatures (Figures 8a and 8c). $\delta^{18}\text{O}$ isotopic variability was negatively related to annual precipi-

ation. However, since around mid 2000s, precipitation declined considerably and $\delta^{18}\text{O}$ decreased rather than increased (Figure 8b). In fact, the correlation coefficient increased from $r = -0.37$ to $r = -0.52$, when the period 2007–2017 was excluded.

The positive correlation coefficient between the standardized tree-ring width chronology from MEL and annual precipitation increased when only the 1967–2006 period was considered, compared to when the whole 1967–2017 period was included (from $r = 0.36$ to $r = 0.44$, $p < 0.01$, Figure S2 in Supporting Information S1). This means that the relationship between tree-ring width and rainfall was weaker after 2006, indicating a change in the forest environmental response since 2007.

In the other stands, $\Delta^{13}\text{C}$ was positively correlated with growing season precipitation (September–March) only in the southern site SPT ($r = 0.35$, $p < 0.01$). Significant correlations between iWUE and climate were found with maximum temperatures in the mid-gradient site NAM and the northernmost site MEL and with precipitation in SPT (Figure S3 in Supporting Information S1).

4. Discussion

4.1. Tree-Ring Isotopes and Growth

Stable carbon isotopes in tree rings of second-growth *N. obliqua* forests along the Mediterranean-Temperate biome transition indicated increasing iWUE and thus water savings since 1967. Trees are discriminating less against ^{13}C ($\Delta^{13}\text{C}$) over time, though one of the northern sites (RUC) showed the opposite trend. Additionally, trees in the mid-gradient at NAM showed the most pronounced negative trend in $\Delta^{13}\text{C}$ showing an additional breakpoint to a steeper negative trend after 1989. This breakpoint could have been triggered by the dry conditions recorded in south-central Chile during that year (Urrutia-Jalabert et al., 2021) and is likely the driver of the latter change in iWUE mean conditions since 1992. The significant reduction in $\Delta^{13}\text{C}$ at NAM, led to the strongest observed increase in iWUE (47%), value that is among the highest reported for different forests in the world throughout the entire twentieth century (Adams et al., 2020; Mathias & Thomas, 2021; Saurer et al., 2014), although higher values have been reported for shrubs (Kannenberg et al., 2021). The increase in iWUE at the northernmost site MEL is around the values reported for other tree species in Chile (Tognetti

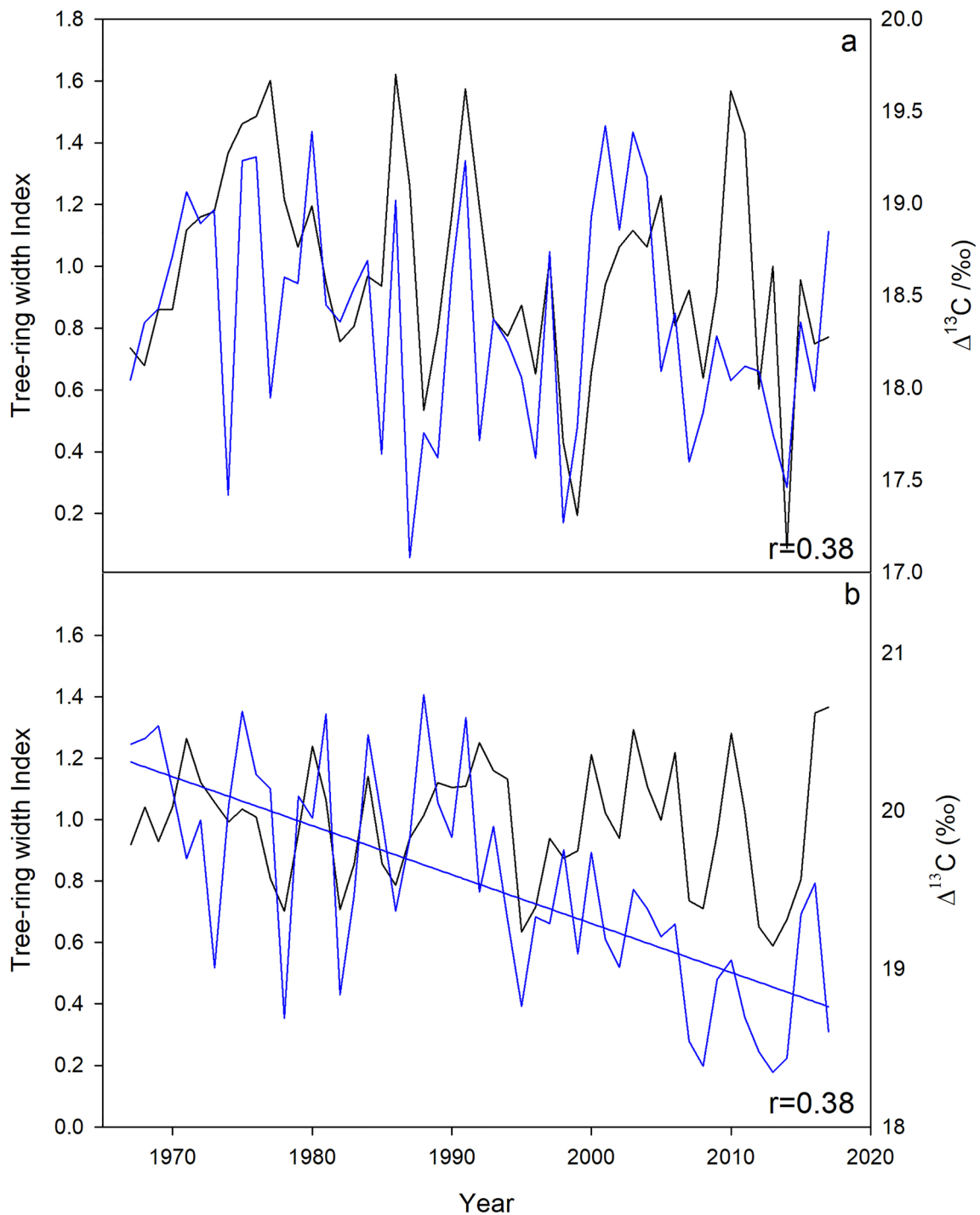


Figure 4. (a) Significant correlations between the tree-ring width chronology (black) and $\Delta^{13}\text{C}$ (blue) at the MEL site ($p < 0.05$); (b) Significant relationship between the tree-ring width chronology (black) and $\Delta^{13}\text{C}$ (blue) at the NAM site ($p < 0.05$).

et al., 2014; Urrutia-Jalabert et al., 2015) and the low value reported for the second northernmost site RUC demonstrates that trees at this site are not adjusting to increases in atmospheric CO_2 and/or drier conditions. Trees are even decreasing their iWUE since approximately 1995, showing less acclimation capacity to environmental changes. This behavior has also been reported for several species worldwide (Adams et al., 2020; Camarero & Fajardo, 2017; Saurer et al., 2014). RUC has the highest stand density among the studied forests, with 1100 trees per ha (Urrutia-Jalabert et al., 2021). A decrease in photosynthetic rates, associated with the increase in

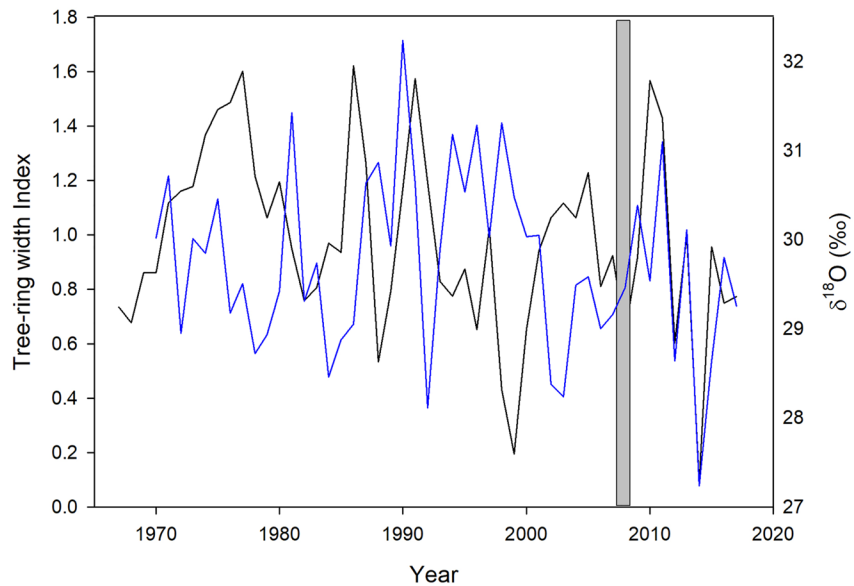


Figure 5. No significant relationship between tree-ring growth (black) and $\delta^{18}\text{O}$ (blue) throughout the 1970–2017 period ($r = 0.02$) at the MEL site. A positive and significant association was observed since 2007 ($r = 0.72$, $p < 0.01$), which had not previously been observed at this site.

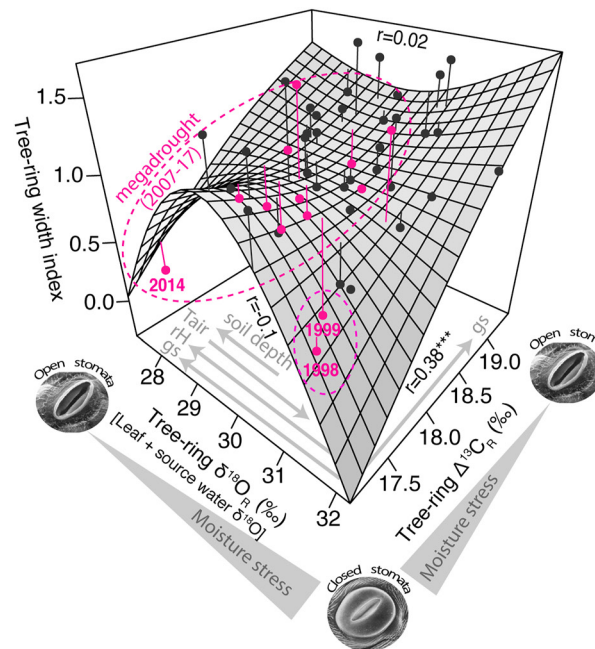


Figure 6. The growth-isotope tree-ring triplet (left) and view of the leaves and forest stand (right) of *N. obliqua* at the northernmost site (MEL). The three-way correlations between the tree-ring variables are indicated along the edges of the surface: tree-ring width versus $\delta^{18}\text{O}$ (top), tree-ring width versus $\Delta^{13}\text{C}$ (right) and $\delta^{18}\text{O}$ versus $\Delta^{13}\text{C}$ (left). The asterisks denote the significance levels of the correlations: * $p < 0.1$, ** $p < 0.05$ and *** $p < 0.001$. The relationship between stomatal opening and moisture stress is indicated along the isotopic axes together with the expected changes in stomatal conductance (g_s) and relative humidity (r_h) according to the isotope model of Scheidegger et al. (2000). The expected enrichment/depletion of $\delta^{18}\text{O}$ with increasing air temperature (T_{air}) and soil depth at the site is also indicated. The individual years are indicated by the dots and their vertical distance to the surface is shown by the line. The drought years are indicated in magenta. The position in the triplet of the extreme drought years 1998 and 1999 indicates that low growth was associated with stronger stomatal closure as expected under water limitation. In contrast, tree growth did not decrease and the isotopic signals indicate little stomatal limitation of gas exchange during the megadrought (2007–2017).

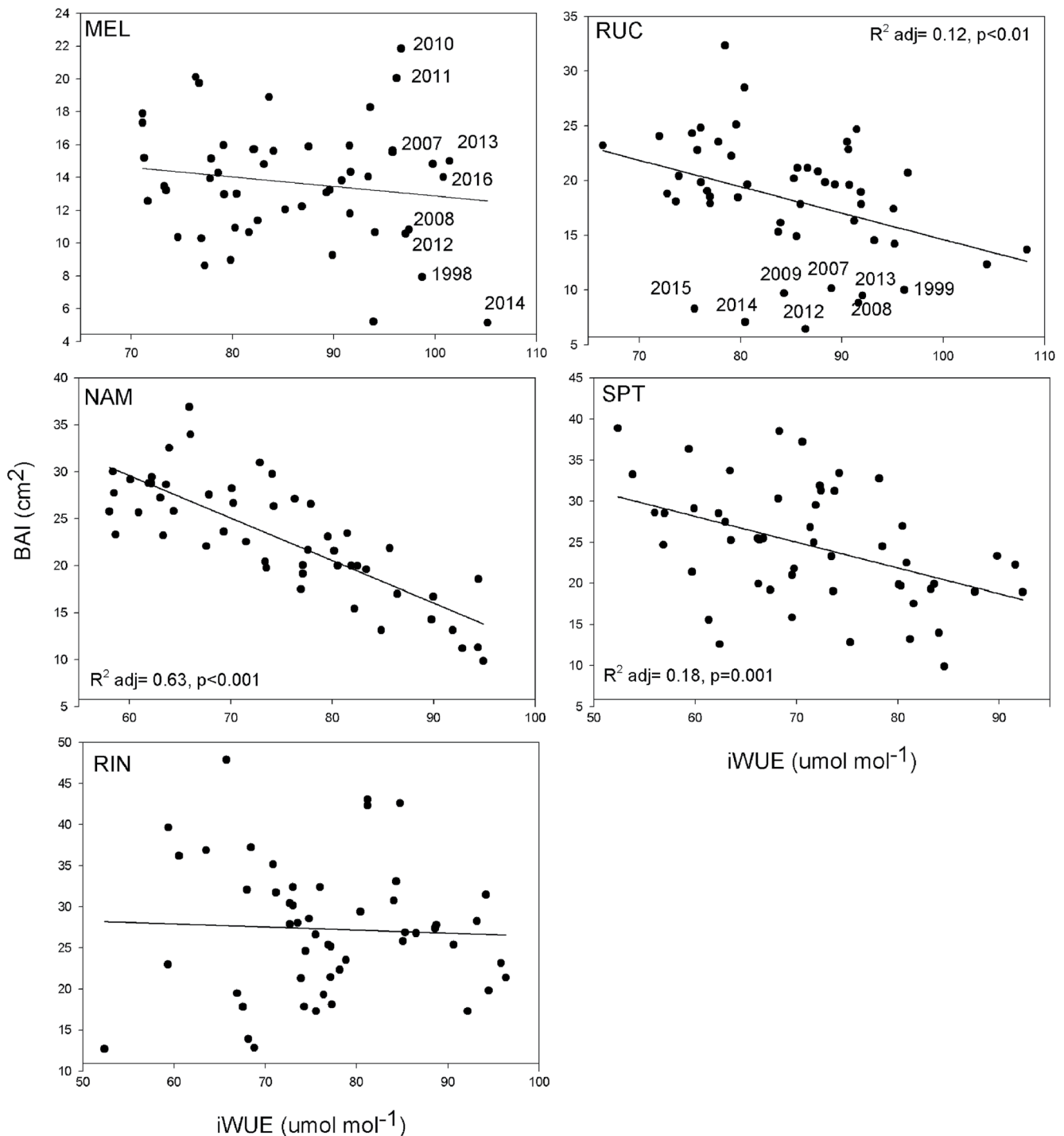


Figure 7. Relationship between mean yearly BAI (cm²) and intrinsic water use efficiency (iWUE) in trees from the different sites for the period 1967–2017. See Figure 1 for site abbreviations. Only significant relationships (adjusted R² for the regressions and significant *p* values) are shown. Some individual years since 2007 are shown denoting high iWUE values, but not an overall reduction in tree growth in MEL, and low BAI values not associated with high iWUE in RUC.

competition intensity and decrease in light availability in this very dense secondary stand, could have influenced this behavior (Martín-Benito et al., 2010; Park et al., 2018). This change could also have been triggered by dry conditions observed during 1995–1996 in south-central Chile, making the trees less efficient to assimilate carbon (Urrutia-Jalabert et al., 2021). In fact, the years with the lowest BAI, mostly occurring since 2007, were not associated with higher water use efficiency. Niccoli et al. (2020) showed that a high intensity thinning increased tree

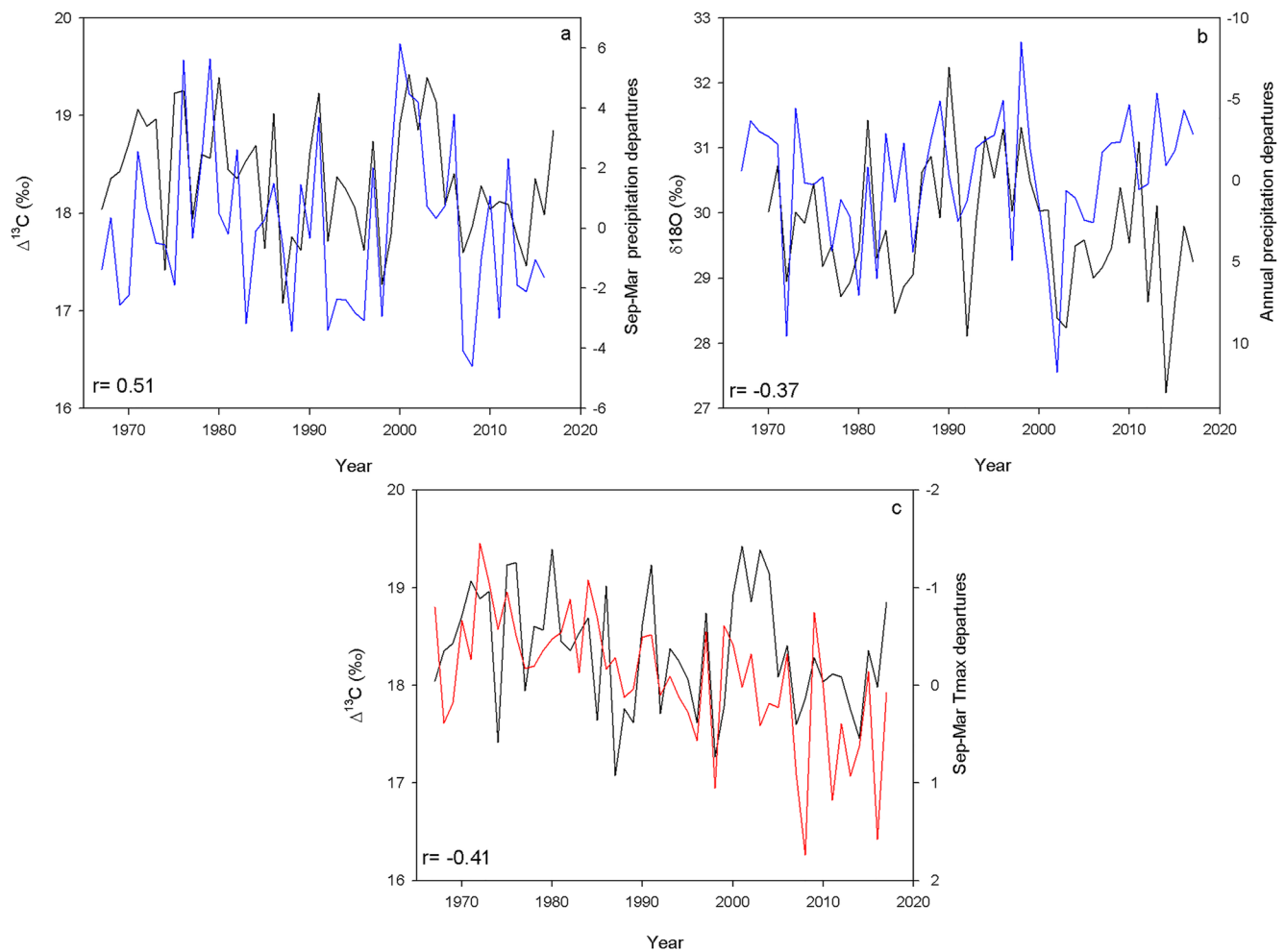


Figure 8. Significant correlations between isotopic signatures and climate at MEL: (a) Relationship between $\Delta^{13}\text{C}$ (black) and growing season (September–March) precipitation (blue, $p < 0.05$); (b) relationship between $\delta^{18}\text{O}$ (black) and annual precipitation (blue, axis inverted, $p < 0.05$); and (c) relationship between $\Delta^{13}\text{C}$ (black) and growing season maximum temperatures (September–March, red, $p < 0.05$).

growth and $i\text{WUE}$ in the temperate deciduous species *Quercus robur*, due to a reduction in competition intensity and an enhanced photosynthetic activity under non-water limited conditions. In contrast, increases in stomatal conductance far prevailed in water-limited environments over increases in assimilation rates when the inter-tree competition was reduced (Giuggiola et al., 2016). RUC was ranked among the sites with the lowest drought tolerance in Urrutia-Jalabert et al. (2021). Besides a possible negative effect of increased stand density (i.e., high inter-tree competition) on tree growth (BAI) and physiological performance, it is not clear why the forest at RUC could not be acclimating to drier and warmer conditions, so future prospections at local soil and microclimatic conditions could shed light on this.

It is important to note that $i\text{WUE}$ trends of *N. obliqua* at the different sites were mostly close to the constant c_i scenario proposed by Saurer (Saurer et al., 2004, except for SPT and RUC, before and after the mid-1990s, respectively), showing an active gas-exchange response of trees to the increase in atmospheric CO_2 concentrations. This is consistent with what was reported for a long-lived conifer in southern Chile (Urrutia-Jalabert et al., 2015), but in contrast to what was reported for *N. dombeyi* and *N. betuloides* in the same southern region of Chile (Camarero & Fajardo, 2017). It is also important to highlight that all sites had shifts in mean $i\text{WUE}$ values in the 1990s or 2000s, which coincided or were around drought years recorded in the region (e.g., 1995, 1996, 2007, Urrutia-Jalabert et al., 2021). Accordingly, increases in $i\text{WUE}$ associated with drought events have been reported before (Jansen et al., 2013; López et al., 2021).

The only two sites with a positive association between standardized tree growth and $\Delta^{13}\text{C}$ were the northernmost site MEL and the mid-gradient site NAM, demonstrating that when trees grow less at these sites, they also

discriminate less against ^{13}C as expected. This pattern is typically found in water-limited mid-latitude forests (Barichivich et al., 2021; Shestakova et al., 2019), where trees tend to reduce their stomatal conductance under dry conditions (Hereş et al., 2014; Timofeeva et al., 2017; Voelker et al., 2014).

The sites where increases in $i\text{WUE}$ have been significantly associated with reductions in BAI were not only RUC, but also the mid-gradient site NAM and the southern site SPT, implying that despite trees being more efficient in their use of water, they are growing less through time. This has been reported in diverse forests around the world and mostly explained by a reduction in stomatal conductance produced by a temporal shift towards more stressful climate and site conditions (Lévesque et al., 2014; Urrutia-Jalabert et al., 2015; Zalloni et al., 2019). In this study we cannot discard that stand development (increasing competition), may influence the observed decrease in BAI (Urrutia-Jalabert et al., 2021), although this pattern was not observed in the also young stand RIN.

Finally, trees at the northernmost site MEL are not decreasing their growth during recent decades (Urrutia-Jalabert et al., 2021) and were also reported to be among the most resilient *N. obliqua* stands to droughts occurred during the past decades (Urrutia-Jalabert et al., 2021). $\delta^{18}\text{O}$ at this site was not strongly related to tree growth during the analyzed period. However, this lack of relationship changed to a positive and significant one during the last 10 years (2007–2017, see next section).

4.2. Tree-Ring Isotopes Indicate a Shift to a Deeper Soil Water Usage in the Mediterranean Forest Stand During the Megadrought

The strongest associations between climate and $\Delta^{13}\text{C}$ were found in the northernmost, driest, and more Mediterranean forest at MEL. $\Delta^{13}\text{C}$ was positively related to growing season precipitation and negatively related to growing season maximum temperatures, suggesting that warmer and drier conditions could have reduced stomatal opening, making trees discriminate less against ^{13}C as expected in water-limited environments (Barichivich et al., 2021; Voelker et al., 2014).

At the mid-gradient site NAM, where BAI is decreasing, significant correlations were found between $i\text{WUE}$ and maximum temperatures. In this site, trees are being much more efficient in their use of water, probably due to increased summer temperatures, which are causing trees to decrease stomatal conductance (Helle & Schleser, 2004). It is likely that local soil conditions are especially limiting at this rainy place, since strong increases in $i\text{WUE}$ and decreases in BAI were not seen in SPT which has an even higher basal area, but is located in a deeper soil and close to a stream (Urrutia-Jalabert et al., 2021).

$\delta^{18}\text{O}$ variability at MEL showed a substantial increase in its negative correlation with annual precipitation, when the period 2007–2017, the same period for which the correlation with tree growth increased, was not considered (change from $r = -0.37$ to -0.52). Such changes in correlations indicate that tree growth and $\delta^{18}\text{O}$ have been coupled during the megadrought, but that rainfall does not influence this pattern. This was supported by a weaker relationship between the tree-ring width chronology and rainfall when considering the same 2007–2017 period ($r = 0.36$, $p < 0.01$) rather than the period prior to 2007 (1967–2006, $r = 0.44$). It is important to mention that the correlation previously reported for the whole overlapping period between tree-ring width and climate (1930–2017) was also $r = 0.44$ (Urrutia-Jalabert et al., 2021). These responses suggest that trees have changed their water source since around 2007 and that they are using water from deeper moisture pools, less enriched in ^{18}O than surface soil water (Barbeta et al., 2015; Querejeta et al., 2021; Sargeant & Singer, 2016; Sarris et al., 2013). Intensified soil and atmospheric dry conditions during recent decades, including the megadrought period, may have progressively reduced shallow soil water sources at the northernmost site MEL, so trees are exploring deeper soil layers to satisfy their water demands and maintain growth rates. Under decreasing surface soil moisture availability, deeper water pools can be used by trees (David et al., 2007; Kurz-Besson et al., 2006), producing a detectable decline in tree-ring $\delta^{18}\text{O}$, thus masking the evaporative enrichment trends from leaf water (Sarris et al., 2013). Deeper soil water reserves may form from surplus winter precipitation integrated over several years, and may be available for trees at some point later in the season (Sarris et al., 2007; Schenk & Jackson, 2002). The tree-ring triplet also shows an opposite behavior, especially in $\delta^{18}\text{O}$, during severe droughts occurring before 2007 (1998–1999) and after 2007 (e.g., 2014). This usage of deeper water has allowed *N. obliqua* trees in the drier Mediterranean region to keep their radial growth rates constant during recent years, suggesting that landscape heterogeneity in soils exerts an important modulation of forest responses to increasing droughts.

However, extreme droughts occurring in Mediterranean climates may aggravate persistent dry conditions, like what has occurred during the megadrought, leading to an eventual depletion of deeper water reservoirs and the

consequent negative effects on vegetation (Barbeta et al., 2015). In addition, transient shifts to usage of deeper water sources may cause a reduction in nutrient uptake (nutrients are present in the topsoil) and carbon assimilation, ultimately leading to persistent reductions in growth and iWUE in the long term (Quejmeta et al., 2021). A recent study in Argentina demonstrated that *Nothofagus dombeyi* trees that died due to droughts used deeper soil water sources and also showed a poorer nutritional status than surviving trees (González de Andrés et al., 2021).

Most of the previous tree-ring studies in the region, have shown decreasing growth trends in different species during recent decades or during the megadrought period (Fajardo et al., 2019; Venegas-González et al., 2022; Villalba et al., 2012). A very closely related species growing in central Chile (*Nothofagus macrocarpa*), is already showing negative growth trends especially since the 1980s (Venegas-González et al., 2018, 2019). Our results demonstrate for the first time that forests in the region might be able to maintain radial growth rates and actively acclimate to persistent droughts by tapping deeper water sources. This finding implies that in the mid-term, forests through the region will likely show heterogeneous responses to worsening drought, depending on the availability of landscape refuges with deeper soil water reservoirs and the functional capacity of the species to access them by investing in deep roots. Modelling studies should help disentangling these isotopic and physiological responses observed at the drier Mediterranean sites and project the fate of these forests in a drier future.

5. Conclusions

Despite sharing similar warming and drying trends across the latitudinal gradient in south-central Chile, not all *N. obliqua* stands are physiologically responding the same way. All stands increased their iWUE during the studied period (1967–2017), but values fluctuated between 14% at the second northernmost site RUC and 47% at the mid-gradient site NAM. In fact, trees from RUC are even decreasing their iWUE since the mid-90s, probably due to a high inter-tree competition and associated light limitation that reduces photosynthetic rates. Only two out of the five stands (MEL and NAM) presented significant correlations between isotopes and tree growth demonstrating an interannual coupling between woody growth and carbon assimilation. Furthermore, mainly MEL, and to a lesser extent NAM and the southern site SPT, showed significant correlations between $\Delta^{13}\text{C}$ and/or iWUE and climate variables. These results indicate a non-uniform response of *N. obliqua* second-growth forests to climate change, being their response strongly modulated by local site and soil conditions. Moreover, it was noteworthy to find that the northernmost Mediterranean stand MEL, changed its $\delta^{18}\text{O}$ trajectory during the megadrought period, and trees seem to be acclimating to drier conditions by tapping water from deeper soil layers. Further studies should assess what has been the response of this stand to the “Hyper drought” that occurred in 2019, since the megadrought is still ongoing. It is also important that future tree-ring studies in the Mediterranean-Temperate climate transition in Chile include combined carbon and oxygen isotope analyses to fully understand the physiological processes behind the observed growth patterns. Finally, it is essential to complement tree growth studies with soil and ecophysiological sampling to better predict the diversity of forest responses to climate and environmental changes.

Data Availability Statement

Tree-ring isotopes and basal area increment data used in this study are available at osf.io/wkuvn (<https://doi.org/10.17605/OSF.IO/WKUVN>).

References

- Adams, H., Zeppel, M., Anderegg, W., Hartmann, H., Landhäusser, S., Tissue, D. T., et al. (2017). A multi-species synthesis of physiological mechanisms in drought-induced tree mortality. *Nature Ecology and Evolution*, 1(September), 1285–1291. <https://doi.org/10.1038/s41559-017-0248-x>
- Adams, M. A., Buckley, T. N., & Turnbull, T. L. (2020). Diminishing CO₂-driven gains in water-use efficiency of global forests. *Nature Climate Change*, 10(5), 466–471. <https://doi.org/10.1038/s41558-020-0747-7>
- Allen, C., Macalady, A., Chenchouni, H., Bachelet, D., McDowell, N., Vennetier, M., et al. (2010). A global overview of drought and heat-induced tree mortality reveals emerging climate change risks for forests. *Forest Ecology and Management*, 259(4), 660–684. <https://doi.org/10.1016/j.foreco.2009.09.001>
- Allen, C. D., Breshears, D. D., & McDowell, N. G. (2015). On underestimation of global vulnerability to tree mortality and forest die-off from hotter drought in the Anthropocene. *Ecosphere*, 6(8), 1–55. <https://doi.org/10.1890/ES15-00203.1>
- Anderegg, W. R. L., Anderegg, L. D. L., Kerr, K. L., & Trugman, A. T. (2019). Widespread drought-induced tree mortality at dry range edges indicates that climate stress exceeds species' compensating mechanisms. *Global Change Biology*, 25(11), 3793–3802. <https://doi.org/10.1111/gcb.14771>

Acknowledgments

RU-J acknowledges the Fondecyt of initiation Grant 11200710 and the PAI-ANID Inserción en el Sector Productivo 7818120003 Grant, developed at Instituto Forestal INFOR. RU-J and AL acknowledge the ANID/FONDAP 1522A0001 project (Center for Climate and Resilience Research CR2), the ARBOLES ANID-NERC-UK Project NE/SE011811/1 and the BNP-PARIBAS THEMES Project. JB received funding from the European Research Council (ERC) under the Horizon Europe research and innovation programme (ERC-starting grant CATES, grant agreement No. 101043214). We thank the following Institutions and landowners that allowed us to work in their properties: Benjamín Ugarte Cruz, Forestal Mininco (Matías Pincheira and Alvaro Zapata), Reserva Namuncai (Marcelo Salinas), Universidad Austral de Chile (Fundo San Pablo de Tregua), and Fundo Riñinahue (Eduardo Thiele). We finally thank Carmen Gloria Rodríguez for helping out with the cutting of tree rings and Moisés Rojas-Badilla, Tania Gipoulou-Zúñiga and Emilio Cuq for developing the tree-ring chronologies that were already published and used in this study.

- Andreu-Hayles, L., Planells, O., Gutiérrez, E., Muntan, E., Helle, G., Anchukaitis, K. J., & Schleser, G. H. (2011). Long tree-ring chronologies reveal 20th century increases in water-use efficiency but no enhancement of tree growth at five Iberian pine forests. *Global Change Biology*, *17*(6), 2095–2112. <https://doi.org/10.1111/j.1365-2486.2010.02373.x>
- Arco Molina, J. G., Helle, G., Hadad, M. A., & Roig, F. A. (2019). Variations in the intrinsic water-use efficiency of North Patagonian forests under a present climate change scenario: Tree age, site conditions and long-term environmental effects. *Tree Physiology*, *39*(4), 661–678. <https://doi.org/10.1093/treephys/tpy144>
- Barbeta, A., Mejía-Chang, M., Ogaya, R., Voltas, J., Dawson, T. E., & Peñuelas, J. (2015). The combined effects of a long-term experimental drought and an extreme drought on the use of plant-water sources in a Mediterranean forest. *Global Change Biology*, *21*(3), 1213–1225. <https://doi.org/10.1111/gcb.12785>
- Barbour, M. M., & Farquhar, G. D. (2000). Relative humidity- and ABA-induced variation in carbon and oxygen isotope ratios of cotton leaves. *Plant, Cell and Environment*, *23*(5), 473–485. <https://doi.org/10.1046/j.1365-3040.2000.00575.x>
- Barichivich, J., Osborn, T., Harris, I., Van der Schrier, G., & Jones, P. (2020). Monitoring global drought using the self-calibrating Palmer drought severity Index [in “state of the climate in 2019”]. *Bulletin of the American Meteorological Society*, *1*, S59–S60.
- Barichivich, J., Peylin, P., Launois, T., Daux, V., Risi, C., Jeong, J., & Luyssaert, S. (2021). A triple tree-ring constraint for tree growth and physiology in a global land surface model. *Biogeosciences*, *18*(12), 3781–3803. <https://doi.org/10.5194/bg-18-3781-2021>
- Barriá, P., Chadwick, C., Ocampo-Melgar, A., Galleguillos, M., Garreaud, R., Díaz-Vasconcellos, R., et al. (2021). Water management or megadrought: What caused the Chilean Aculeo lake drying? *Regional Environmental Change*, *21*(1), 19. <https://doi.org/10.1007/s10113-021-01750-w>
- Biondi, F. (1999). Comparing tree-ring chronologies and repeated timber inventories as forest monitoring tools. *Ecological Applications*, *9*(1), 216–227. [https://doi.org/10.1890/1051-0761\(1999\)009\[0216:etrcar\]2.0.co;2](https://doi.org/10.1890/1051-0761(1999)009[0216:etrcar]2.0.co;2)
- Bowman, D. M. J. S., Moreira-Muñoz, A., Kolden, C. A., Chávez, R. O., Muñoz, A. A., Salinas, F., et al. (2019). Human–environmental drivers and impacts of the globally extreme 2017 Chilean fires. *Ambio*, *48*(4), 350–362. <https://doi.org/10.1007/s13280-018-1084-1>
- Cailleret, M., Jansen, S., Robert, E. M. R., Desoto, L., Aakala, T., Antos, J. A., et al. (2017). A synthesis of radial growth patterns preceding tree mortality. *Global Change Biology*, *23*(4), 1675–1690. <https://doi.org/10.1111/gcb.13535>
- Camarero, J. J., & Fajardo, A. (2017). Poor acclimation to current drier climate of the long-lived tree species *Fitzroya cupressoides* in the temperate rainforest of southern Chile. *Agricultural and Forest Meteorology*, *239*, 141–150. <https://doi.org/10.1016/j.agrformet.2017.03.003>
- Camarero, J. J., Gazol, A., Sangüesa-Barreda, G., Vergarechea, M., Alfaro-Sánchez, R., Cattaneo, N., & Vicente-Serrano, S. M. (2021). Tree growth is more limited by drought in rear-edge forests most of the times. *Forest Ecosystems*, *8*(1), 1–15. <https://doi.org/10.1186/s40663-021-00303-1>
- Castruita-Esparza, L. U., Silva, L. C. R., Gómez-Guerrero, A., Villanueva-Díaz, J., Correa-Díaz, A., & Horwath, W. R. (2019). Coping with extreme events: Growth and water-use efficiency of trees in Western Mexico during the driest and wettest periods of the past one hundred sixty years. *Journal of Geophysical Research: Biogeosciences*, *124*(11), 3419–3431. <https://doi.org/10.1029/2019JG005294>
- Cavin, L., & Jump, A. S. (2017). Highest drought sensitivity and lowest resistance to growth suppression are found in the range core of the tree *Fagus sylvatica* L. not the equatorial range edge. *Global Change Biology*, *23*(1), 362–379. <https://doi.org/10.1111/gcb.13366>
- Chiang, F., Mazdiyasn, O., & AghaKouchak, A. (2021). Evidence of anthropogenic impacts on global drought frequency, duration, and intensity. *Nature Communications*, *12*(1), 1–10. <https://doi.org/10.1038/s41467-021-22314-w>
- Christie, D., Bonisegna, J., Cleaveland, M., Lara, A., Le Quesne, C., Morales, M., et al. (2011). Aridity changes in the temperate-Mediterranean transition of the Andes since AD 1346 reconstructed from tree-rings. *Climate Dynamics*, *36*(7–8), 1505–1521. <https://doi.org/10.1007/s00382-009-0723-4>
- Cook, E., & Krusic, P. (2005). Program ARSTAN: A tree-ring standardization program based on detrending and autoregressive time series modeling, with interactive graphics. In *Lamont-Doherty Earth observatory*. Columbia University.
- David, T. S., Henriques, M. O., Kurz-Besson, C., Nunes, J., Valente, F., Vaz, M., et al. (2007). Water-use strategies in two co-occurring Mediterranean evergreen oaks: Surviving the summer drought. *Tree Physiology*, *27*(6), 793–803. <https://doi.org/10.1093/treephys/tpy27.6.793>
- Donoso, P., Donoso, C., & Sandoval, V. (1993). Proposición de zonas de crecimiento de renovales de roble (*Nothofagus obliqua*) y raulí (*Nothofagus alpina*) en su rango de distribución natural. *Bosque*, *14*(2), 37–55. <https://doi.org/10.4206/bosque.1993.v14n2-06>
- Fajardo, A., Gazol, A., Mayr, C., & Camarero, J. J. (2019). Recent decadal drought reverts warming-triggered growth enhancement in contrasting climates in the southern Andes tree line. *Journal of Biogeography*, *46*(7), 1367–1379. <https://doi.org/10.1111/jbi.13580>
- Falvey, M., & Garreaud, R. D. (2009). Regional cooling in a warming world: Recent temperature trends in the southeast Pacific and along the west coast of subtropical South America (1979–2006). *Journal of Geophysical Research*, *114*(D4), 1–16. <https://doi.org/10.1029/2008jd010519>
- Farquhar, G., Ehleringer, J., & Hubick, K. (1989). Carbon isotope discrimination and photosynthesis. *Annual Review of Plant Physiology and Plant Molecular Biology*, *40*(1), 503–537. <https://doi.org/10.1146/annurev.pp.40.060189.002443>
- Farquhar, G., & Lloyd, J. (1993). Carbon and oxygen isotope effects in the exchange of carbon dioxide between terrestrial plants and the atmosphere. In J. Ehleringer, A. Hall, & G. Farquhar (Eds.), *Stable isotopes and plant carbon–water relations* (pp. 47–70). Academic Press. <https://doi.org/10.1016/b978-0-08-091801-3.50011-8>
- Farquhar, G. D., O’Leary, M., & Berry, J. (1982). On the relationship between carbon isotope discrimination and the intercellular carbon dioxide concentration in leaves. *Functional Plant Biology*, *9*(2), 121–137. <https://doi.org/10.1071/pp9820121>
- Franks, S. J., Weber, J. J., & Aitken, S. N. (2013). Evolutionary and plastic responses to climate change in terrestrial plant populations. *Evolutionary Applications*, *7*(1), 123–139. <https://doi.org/10.1111/eva.12112>
- Garreaud, R. D., Boisier, J. P., Rondanelli, R., Montecinos, A., Sepúlveda, H. H., & Veloso-Aguila, D. (2020). The Central Chile mega drought (2010–2018): A climate dynamics perspective. *International Journal of Climatology*, *40*(January), 1–19. <https://doi.org/10.1002/joc.6219>
- Gazol, A., Camarero, J. J., Anderegg, W. R. L., & Vicente-Serrano, S. M. (2017). Impacts of droughts on the growth resilience of Northern Hemisphere forests. *Global Ecology and Biogeography*, *26*(2), 166–176. <https://doi.org/10.1111/gcb.12526>
- Gazol, A., Camarero, J. J., Vicente-Serrano, S. M., Sánchez-Salguero, R., Gutiérrez, E., De Luis, M., et al. (2018). Forest resilience to drought varies across biomes. *Global Change Biology*, *24*(5), 2143–2158. <https://doi.org/10.1111/gcb.14082>
- Gazol, A., Ribas, M., Gutiérrez, E., & Camarero, J. (2017). Aleppo pine forests from across Spain show drought-induced growth decline and partial recovery. *Agricultural and Forest Meteorology*, *232*, 186–194. <https://doi.org/10.1016/j.agrformet.2016.08.014>
- Gezan, S., Ortega, A., & Andenmatten, E. (2007). Diagramas de manejo de densidad para renovales de roble, raulí y coigüe en Chile. *Bosque*, *28*(2), 97–105. <https://doi.org/10.4067/s0717-92002007000200002>
- Giugliola, A., Ogée, J., Rigling, A., Gessler, A., Bugmann, H., & Treydte, K. (2016). Improvement of water and light availability after thinning at a xeric site: Which matters more? A dual isotope approach. *New Phytologist*, *210*(1), 108–121. <https://doi.org/10.1111/nph.13748>
- Gómez-Guerrero, A., Silva, L. C. R., Barrera-Reyes, M., Kishchuk, B., Velázquez-Martínez, A., Martínez-Trinidad, T., et al. (2013). Growth decline and divergent tree ring isotopic composition ($\delta^{13}\text{C}$ and $\delta^{18}\text{O}$) contradict predictions of CO_2 stimulation in high altitudinal forests. *Global Change Biology*, *19*(6), 1748–1758. <https://doi.org/10.1111/gcb.12170>

- González-Reyes, A., & Muñoz, A. (2013). Cambios en la precipitación de la ciudad de Valdivia (Chile) durante los últimos 150 años. *Bosque*, 34(2), 191–216. <https://doi.org/10.4067/S0717-92002013000200008>
- González de Andrés, E., Suárez, M., Querejeta, J., & Camarero, J. (2021). Chronically low nutrient concentrations in tree rings are linked to greater tree vulnerability to drought in *Nothofagus dombeyi*. *Forests*, 12(9), 1–19. <https://doi.org/10.3390/f12091180>
- Granda, E., Alla, A. Q., Laskurain, N. A., Loidi, J., Camarero, J. J., & Camarero, J. J. (2017). Coexisting oak species, including rear-edge populations, buffer climate stress through xylem adjustments. *Tree Physiology*, 38(2), 159–172. <https://doi.org/10.1093/treephys/tpx157>
- Guerrieri, R., Belmecheri, S., Ollinger, S., Asbjornsen, H., Jennings, K., Xiao, J., et al. (2019). Disentangling the role of photosynthesis and stomatal conductance on rising forest water-use efficiency. *Proceedings of the National Academy of Sciences*, 116(34), 16909–16914. <https://doi.org/10.1073/pnas.1905912116>
- Helle, G., & Schleser, G. H. (2004). Interpreting climate proxies from tree-rings. In H. Fischer, G. Floeser, T. Kumke, G. Lohmann, H. Miller, J. F. W. Negendank, et al. (Eds.), *Towards a synthesis of Holocene proxy data and climate models* (pp. 129–148). Springer Verlag Berlin. https://doi.org/10.1007/978-3-662-10313-5_8
- Hereş, A. M., Voltas, J., López, B. C., & Martínez-Vilalta, J. (2014). Drought-induced mortality selectively affects Scots pine trees that show limited intrinsic water-use efficiency responsiveness to raising atmospheric CO₂. *Functional Plant Biology*, 41(3), 244–256. <https://doi.org/10.1071/FP13067>
- Huang, R., Zhu, H., Liu, X., Liang, E., Brieber, J., Wu, G., et al. (2017). Does increasing intrinsic water use efficiency (iWUE) stimulate tree growth at natural alpine timberline on the southeastern Tibetan Plateau? *Global and Planetary Change*, 148, 217–226. <https://doi.org/10.1016/j.gloplacha.2016.11.017>
- Jansen, K., Sohr, J., Kohnle, U., Ensminger, I., & Gessler, A. (2013). Tree ring isotopic composition, radial increment and height growth reveal provenance-specific reactions of Douglas-fir towards environmental parameters. *Trees - Structure and Function*, 27(1), 37–52. <https://doi.org/10.1007/s00468-012-0765-9>
- Kannenber, S. A., Driscoll, A. W., Szejner, P., Anderegg, W. R. L., & Ehleringer, J. R. (2021). Rapid increases in shrubland and forest intrinsic water-use efficiency during an ongoing megadrought. *Proceedings of the National Academy of Sciences of the United States of America*, 118(52), 1–6. <https://doi.org/10.1073/pnas.2118052118>
- Kurz-Besson, C., Otieno, D., Lobo Do Vale, R., Siegwolf, R., Schmidt, M., Herd, A., et al. (2006). Hydraulic lift in cork oak trees in a savannah-type Mediterranean ecosystem and its contribution to the local water balance. *Plant and Soil*, 282(1–2), 361–378. <https://doi.org/10.1007/s11104-006-0005-4>
- Lara, A., Villalba, R., Urrutia-Jalabert, R., González-Reyes, A., Aravena, J. C., Luckman, B. H., et al. (2020). A 5680-year tree-ring temperature record for southern South America. *Quaternary Science Reviews*, 228, 106087. <https://doi.org/10.1016/j.quascirev.2019.106087>
- Laverne, A., Daux, V., Villalba, R., Pierre, M., Stievenard, M., Vimeux, F., & Srur, A. M. (2016). Are the oxygen isotopic compositions of *Fitzroya cupressoides* and *Nothofagus pumilio* cellulose. *Journal of Geophysical Research G: Biogeosciences*, 121(September), 767–776. <https://doi.org/10.1002/2015JG003260>
- Lévesque, M., Siegwolf, R., Saurer, M., Eilmann, B., & Rigling, A. (2014). Increased water-use efficiency does not lead to enhanced tree growth under xeric and mesic conditions. *New Phytologist*, 203(1), 94–109. <https://doi.org/10.1111/nph.12772>
- López, R., Cano, F. J., Rodríguez-Calcerrada, J., Sangüesa-Barreda, G., Gazol, A., Camarero, J. J., et al. (2021). Tree-ring density and carbon isotope composition are early-warning signals of drought-induced mortality in the drought tolerant Canary Island pine. *Agricultural and Forest Meteorology*, 310(September), 108634. <https://doi.org/10.1016/j.agrformet.2021.108634>
- Martín-Benito, D., Del Río, M., Heinrich, I., Helle, G., & Cañellas, I. (2010). Response of climate-growth relationships and water use efficiency to thinning in a *Pinus nigra* afforestation. *Forest Ecology and Management*, 259(5), 967–975. <https://doi.org/10.1016/j.foreco.2009.12.001>
- Martínez-Vilalta, J., López, B. C., Adell, N., Badiella, L., & Ninyerola, M. (2008). Twentieth century increase of Scots pine radial growth in NE Spain shows strong climate interactions. *Global Change Biology*, 14(12), 2868–2881. <https://doi.org/10.1111/j.1365-2486.2008.01685.x>
- Mathias, J. M., & Thomas, R. B. (2021). Global tree intrinsic water use efficiency is enhanced by increased atmospheric CO₂ and modulated by climate and plant functional types. *Proceedings of the National Academy of Sciences of the United States of America*, 118(7). <https://doi.org/10.1073/pnas.2014286118>
- McCarroll, D., Duffy, J. E., Loader, N. J., Young, G. H. F., Davies, D., Miles, D., & Bronk Ramsey, C. (2020). Are there enormous age-trends in stable carbon isotope ratios of oak tree rings? *The Holocene*, 30(11), 1637–1642. <https://doi.org/10.1177/0959683620941073>
- McCarroll, D., & Loader, N. J. (2004). Stable isotopes in tree rings. *Quaternary Science Reviews*, 23(7–8), 771–801. <https://doi.org/10.1016/j.quascirev.2003.06.017>
- Miranda, A., Lara, A., Altamirano, A., Di Bella, C., González, M., & Camarero, J. (2020). Forest browning trends in response to drought in a highly threatened Mediterranean landscape of South America. *Ecological Indicators*, 115(106401), 1–10. <https://doi.org/10.1016/j.ecolind.2020.106401>
- Monserud, R. A., & Marshall, J. D. (2001). Time-series analysis of $\delta^{13}C$ from tree rings. I. Time trends and autocorrelation. *Tree Physiology*, 21(15), 1087–1102. <https://doi.org/10.1093/treephys/21.15.1087>
- Morales, M. S., Cook, E. R., Barichivich, J., Christie, D. A., Villalba, R., LeQuesne, C., et al. (2020). Six hundred years of South American tree rings reveal an increase in severe hydroclimatic events since mid-20th century. *Proceedings of the National Academy of Sciences*, 117(29), 16816–16823. <https://doi.org/10.1073/pnas.2002411117>
- Muggeo, V. (2008). Segmented: An R package to fit regression models with broken-line relationships. *R News*, 8, 20–25.
- Niccoli, F., Pelleri, F., Manetti, M. C., Sansone, D., & Battipaglia, G. (2020). Effects of thinning intensity on productivity and water use efficiency of *Quercus robur* L. *Forest Ecology and Management*, 473(March), 118282. <https://doi.org/10.1016/j.foreco.2020.118282>
- Park, J., Kim, T., Moon, M., Cho, S., Ryu, D., & Seok Kim, H. (2018). Effects of thinning intensities on tree water use, growth, and resultant water use efficiency of 50-year-old *Pinus koraiensis* forest over four years. *Forest Ecology and Management*, 408(March), 121–128. <https://doi.org/10.1016/j.foreco.2017.09.031>
- Puchi, P. F., Camarero, J. J., Battipaglia, G., & Carrer, M. (2021). Retrospective analysis of wood anatomical traits and tree-ring isotopes suggests site-specific mechanisms triggering *Araucaria araucana* drought-induced dieback. *Global Change Biology*, 27(24), 6394–6408. <https://doi.org/10.1111/gcb.15881>
- Querejeta, J. I., Ren, W., & Prieto, I. (2021). Vertical decoupling of soil nutrients and water under climate warming reduces plant cumulative nutrient uptake, water-use efficiency and productivity. *New Phytologist*, 230(4), 1378–1393. <https://doi.org/10.1111/nph.17258>
- R Development Core T. (2014). *R: A language and environment for statistical computing*. R Foundation for Statistical Computing.
- Roden, J., Lin, G., & Ehleringer, J. (2000). A mechanistic model for interpretation of hydrogen and oxygen isotope ratios in tree-ring cellulose. *Geochimica et Cosmochimica Acta*, 64(1), 21–35. [https://doi.org/10.1016/S0016-7037\(99\)00195-7](https://doi.org/10.1016/S0016-7037(99)00195-7)
- Roden, J., Saurer, M., & Siegwolf, R. T. W. (2022). *Probing tree physiology using the dual-isotope approach* (pp. 463–479). Springer International Publishing. https://doi.org/10.1007/978-3-030-92698-4_16

- Rodionov, S. N. (2004). A sequential algorithm for testing climate regime shifts. *Geophysical Research Letters*, 31(9), 1–4. <https://doi.org/10.1029/2004gl019448>
- Rodríguez-Catón, M., Villalba, R., Srur, A. M., & Luckman, B. (2015). Long-term trends in radial growth associated with *Nothofagus pumilio* forest decline in Patagonia: Integrating local-into regional-scale patterns. *Forest Ecology and Management*, 339, 44–56. <https://doi.org/10.1016/j.foreco.2014.12.004>
- Sargeant, C., & Singer, M. (2016). Sub-annual variability in historical water source use by Mediterranean riparian trees. *Ecology*, 97(7), 1328–1345. <https://doi.org/10.1002/eco.1730>
- Sargeant, C. I., Singer, M. B., & Vallet-Coulomb, C. (2019). Identification of source-water oxygen isotopes in trees toolkit (ISO-Tool) for deciphering historical water use by forest trees. *Water Resources Research*, 55. <https://doi.org/10.1029/2018wr024519>
- Sarris, D., Christodoulakis, D., & Körner, C. (2007). Recent decline in precipitation and tree growth in the eastern Mediterranean. *Global Change Biology*, 13(6), 1187–1200. <https://doi.org/10.1111/j.1365-2486.2007.01348.x>
- Sarris, D., Siegwolf, R., & Körner, C. (2013). Inter- and intra-annual stable carbon and oxygen isotope signals in response to drought in Mediterranean pines. *Agricultural and Forest Meteorology*, 168, 59–68. <https://doi.org/10.1016/j.agrformet.2012.08.007>
- Saurer, M., Spahni, R., Frank, D. C., Joos, F., Leuenberger, M., Loader, N. J., et al. (2014). Spatial variability and temporal trends in water-use efficiency of European forests. *Global Change Biology*, 20(12), 3700–3712. <https://doi.org/10.1111/gcb.12717>
- Saurer, M., Siegwolf, R., & Schweingruber, F. (2004). Carbon isotope discrimination indicates improving water-use efficiency of trees in northern Eurasia over the last 100 years. *Global Change Biology*, 10(12), 2109–2120. <https://doi.org/10.1111/j.1365-2486.2004.00869.x>
- Scheidegger, Y., Saurer, M., Bahn, M., & Siegwolf, R. (2000). Linking stable oxygen and carbon isotopes with stomatal conductance and photosynthetic capacity: A conceptual model. *Oecologia*, 125(3), 350–357. <https://doi.org/10.1007/s004420000466>
- Schenk, H. J., & Jackson, R. B. (2002). Rooting depths, lateral root spreads and below-ground/above-ground allometries of plants in water-limited ecosystems. *Journal of Ecology*, 90(3), 480–494. <https://doi.org/10.1046/j.1365-2745.2002.00682.x>
- SEGRA. (2020). *Hablemos de sequía Outlook estacional Invierno 2020*. Ministerio de Agricultura. Gobierno de Chile.
- Serra-Maluquer, X., Gazol, A., Sangüesa-Barreda, G., Sánchez-Salguero, R., Rozas, V., Colangelo, M., et al. (2019). Geographically structured growth decline of rear-edge Iberian *Fagus sylvatica* forests after the 1980s shift toward a warmer climate. *Ecosystems*, 22(6), 1325–1337. <https://doi.org/10.1007/s10021-019-00339-z>
- Shestakova, T. A., Voltas, J., Saurer, M., Berninger, F., Esper, J., Andreu-Hayles, L., et al. (2019). Spatio-temporal patterns of tree growth as related to carbon isotope fractionation in European forests under changing climate. *Global Ecology and Biogeography*, 28(9), 1295–1309. <https://doi.org/10.1111/geb.12933>
- Song, X., Clark, K. S., & Helliker, B. R. (2014). Interpreting species-specific variation in tree-ring oxygen isotope ratios among three temperate forest trees. *Plant, Cell and Environment*, 37(9), 2169–2182. <https://doi.org/10.1111/pce.12317>
- Song, X., Farquhar, G. D., Gessler, A., & Barbour, M. M. (2014). Turnover time of the non-structural carbohydrate pool influences $\delta^{18}\text{O}$ of leaf cellulose. *Plant, Cell and Environment*, 37(11), 2500–2507. <https://doi.org/10.1111/pce.12309>
- Soule, P., & Knapp, P. (2006). Radial growth rate increases in naturally occurring ponderosa pine trees: A late-20th century CO₂ fertilization effect? *New Phytologist*, 171(2), 379–390. <https://doi.org/10.1111/j.1469-8137.2006.01746.x>
- Sternberg, L., DeNiro, M., & Savidge, R. (1986). Oxygen isotope exchange between metabolites and water during biochemical reactions leading to cellulose synthesis. *Plant Physiology*, 82(2), 423–427. <https://doi.org/10.1104/pp.82.2.423>
- Suárez, M. L., Villalba, R., Mundo, I. A., & Schroeder, N. (2015). Sensitivity of *Nothofagus dombeyi* tree growth to climate changes along a precipitation gradient in northern Patagonia, Argentina. *Trees - Structure and Function*, 29(4), 1053–1067. <https://doi.org/10.1007/s00468-015-1184-5>
- Szejner, P., Belmecheri, S., Ehleringer, J. R., & Monson, R. K. (2020). Recent increases in drought frequency cause observed multi-year drought legacies in the tree rings of semi-arid forests. *Oecologia*, 192(1), 241–259. <https://doi.org/10.1007/s00442-019-04550-6>
- Timofeeva, G., Treydte, K., Bugmann, H., Rigling, A., Schaub, M., Siegwolf, R., & Saurer, M. (2017). Long-term effects of drought on tree-ring growth and carbon isotope variability in Scots pine in a dry environment. *Tree Physiology*, 37(8), 1028–1041. <https://doi.org/10.1093/treephys/tpx041>
- Tognetti, R., Lombardi, F., Lasserre, B., Cherubini, P., & Marchetti, M. (2014). Tree-ring stable isotopes reveal twentieth-century increases in water-use efficiency of *fagus sylvatica* and *nothofagus* spp. in Italian and Chilean Mountains. *PLoS One*, 9(11), e113136. <https://doi.org/10.1371/journal.pone.0113136>
- Trenberth, K., Jones, P. D., Ambenje, P., Bojariu, R., Easterling, D., Klein Tank, A., et al. (2007). Observations: Surface and atmospheric climate change. In *Climate change 2007: The physical science basis. Contribution of working group I to the fourth assessment report of the intergovernmental panel on climate change*. Cambridge University Press.
- Urrutia-Jalabert, R., Barichivich, J., Rozas, V., Lara, A., Rojas, Y., Bahamondez, C., et al. (2021). Climate response and drought resilience of *Nothofagus obliqua* secondary forests across a latitudinal gradient in south-central Chile. *Forest Ecology and Management*, 485(January), 118962. <https://doi.org/10.1016/j.foreco.2021.118962>
- Urrutia-Jalabert, R., Malhi, Y., Barichivich, J., Lara, A., Delgado-Huertas, A., Rodríguez, C., & Cuq, E. (2015). Increased water use efficiency but contrasting tree growth patterns in *Fitzroya cupressoides* forests of southern Chile during recent decades. *Journal of Geophysical Research: Biogeosciences*, 120(12), 2505–2524. <https://doi.org/10.1002/2015JG003098>
- Vadeboncoeur, M. A., Jennings, K. A., Ouimette, A. P., & Asbjornsen, H. (2020). Correcting tree-ring $\delta^{13}\text{C}$ time series for tree-size effects in eight temperate tree species. *Tree Physiology*, 40(3), 333–349. <https://doi.org/10.1093/treephys/tpz138>
- Van Der Sleen, P., Groenendijk, P., Vlam, M., Anten, N. P. R., Boom, A., Bongers, F., et al. (2015). No growth stimulation of tropical trees by 150 years of CO₂ fertilization but water-use efficiency increased. *Nature Geoscience*, 8(1), 24–28. <https://doi.org/10.1038/ngeo2313>
- Venegas-González, A., Muñoz, A. A., Carpintero-Gibson, S., González-Reyes, A., Schneider, I., Gipolou-Zuñiga, T., et al. (2022). Sclerophyllous forest tree growth under the influence of a historic megadrought in the Mediterranean ecoregion of Chile. *Ecosystems*, 26(2), 344–361. <https://doi.org/10.1007/s10021-022-00760-x>
- Venegas-González, A., Roig, F., Gutiérrez, A., & Tomazello-Filho, M. (2018). Recent radial growth decline in response to increased drought conditions in the northernmost *Nothofagus* populations from South America. *Forest Ecology and Management*, 409(August 2017), 94–104. <https://doi.org/10.1016/j.foreco.2017.11.006>
- Venegas-González, A., Roig, F. A., Peña-Rojas, K., Hadad, M. A., Aguilera-Betti, I., & Muñoz, A. (2019). Recent consequences of climate change have affected tree growth in distinct *Nothofagus macrocarpa* (DC.) FM Vaz & Rodr age classes in Central Chile. *Forests*, 10(8), 653. <https://doi.org/10.3390/f10080653>
- Villalba, R., Lara, A., Masiokas, M., Urrutia, R., Luckman, B., Marshall, G., et al. (2012). Unusual southern hemisphere tree growth patterns induced by changes in the southern annular mode. *Nature Geoscience*, 5(November), 793–798. <https://doi.org/10.1038/ngeo1613>

- Villamayor, J., Khodri, M., Villalba, R., & Daux, V. (2021). Causes of the long-term variability of southwestern South America precipitation in the IPSL-CM6A-LR model. *Climate Dynamics*, 57(9–10), 2391–2414. <https://doi.org/10.1007/s00382-021-05811-y>
- Voelker, S. L., Meinzer, F. C., Lachenbruch, B., Brooks, J. R., & Guyette, R. P. (2014). Drivers of radial growth and carbon isotope discrimination of bur oak (*Quercus macrocarpa* Michx.) across continental gradients in precipitation, vapour pressure deficit and irradiance. *Plant, Cell and Environment*, 37(3), 766–779. <https://doi.org/10.1111/pce.12196>
- Wood, S. (2017). *Generalized additive models: An introduction with R* (2nd ed.). Chapman and Hall/CRC. <https://doi.org/10.1201/9781315370279>
- Zalloni, E., Battipaglia, G., Cherubini, P., Saurer, M., & De Micco, V. (2019). Wood growth in pure and mixed *Quercus ilex* L. Forests: Drought influence depends on site conditions. *Frontiers of Plant Science*, 10(April), 1–14. <https://doi.org/10.3389/fpls.2019.00397>
- Zhao, M., & Running, S. W. (2010). Drought-induced reduction in global terrestrial net primary production from 2000 through 2009. *Science*, 329(5994), 940–943. <https://doi.org/10.1126/science.1192666>