



HAL
open science

Diet variations across remote populations of a widely distributed snake species, the Asp viper (*Vipera aspis aspis*; Linnaeus 1758)

Florian Laurence, Xavier Bonnet, Sylvain Ursenbacher, Gaëtan Guiller, Gopal Billy, Guy Naulleau, Nicolas Vidal

► To cite this version:

Florian Laurence, Xavier Bonnet, Sylvain Ursenbacher, Gaëtan Guiller, Gopal Billy, et al.. Diet variations across remote populations of a widely distributed snake species, the Asp viper (*Vipera aspis aspis*; Linnaeus 1758). -, Oct 2022, -, France. hal-04082528

HAL Id: hal-04082528

<https://hal.science/hal-04082528>

Submitted on 26 Apr 2023

HAL is a multi-disciplinary open access archive for the deposit and dissemination of scientific research documents, whether they are published or not. The documents may come from teaching and research institutions in France or abroad, or from public or private research centers.

L'archive ouverte pluridisciplinaire **HAL**, est destinée au dépôt et à la diffusion de documents scientifiques de niveau recherche, publiés ou non, émanant des établissements d'enseignement et de recherche français ou étrangers, des laboratoires publics ou privés.

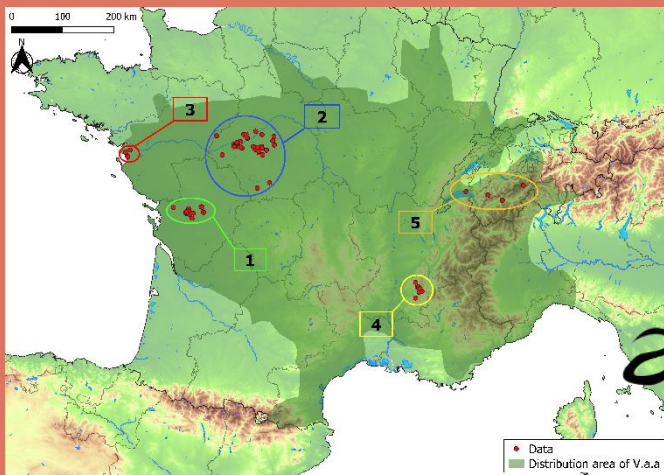


Diet variations across remote populations of a widely distributed snake species, the Asp viper (*Vipera aspis aspis*; Linnaeus 1758)

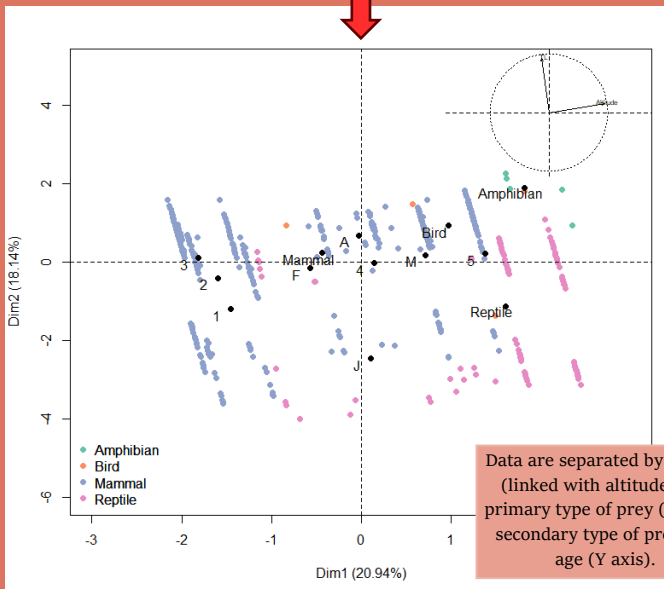
Florian LAURENCE¹, Xavier BONNET², Sylvain URSENBACHER^{3,4}, Gaetan GUILLER⁵, Gopal BILLY², Guy NAULLEAU⁶, and Nicolas VIDAL¹

¹ Institut de Systématique, Evolution, Biodiversité (ISYEB), Muséum national d'Histoire naturelle, CNRS, SU, EPHE, UA, CP 30, 57 rue Cuvier, 75005 Paris / ² Centre d'études biologiques de Chizé, UMR-7372, CNRS Université de La Rochelle, 405 Route de Prissé la Charrière, 79360 Villiers en Bois, France / ³ Section of Conservation Biology, Department of Environmental Sciences, University of Basel, St. Johanns-Vorstadt 10, 4056 Basel, Switzerland / ⁴ info fauna - CSCF & karch, University of Neuchâtel, Avenue Bellevaux 51, 2000 Neuchâtel / ⁵ Le Grand Momesson, 44130 Bouvron, France / ⁶ 10 rue Port Royal, La Bernerie en Retz, 44760, France

Vipera aspis is a common species extending from west France to Switzerland, south Italy and north Spain. This snake inhabits a great variability of habitats, including plains nearby the Atlantic Ocean, Mediterranean habitats or mountainous alpine meadows. Diet may vary across habitats (e.g., plains, scrublands, mountains). Conversely, *Vipera aspis* may select a narrow spectrum of prey. We addressed this issue in the subspecies *Vipera aspis aspis*. Combining fieldwork and Museum specimens, we examined **1,680 vipers** and collected **605 prey' observations**. We compared five areas encompassing contrasted habitats (map below).



How to better explain collected data?
➤ ACP to combine environmental variables, individual characteristics and diet.



Data are separated by habitat (linked with altitude) and primary type of prey (X axis), secondary type of prey and age (Y axis).

- ♀ Females consume more micro-mammals than males.
- ✓ We also observed (and thus confirmed) the ontogenetic shift (juveniles consume more reptiles), less pronounced with altitude.
- In Atlantic plains (loc. 1/2/3) micromammals are overwhelmingly the main prey
- Mediterranean area presents a similar pattern (loc. 4)
- Lizards represent an important part of the diet in alpine meadows (loc. 5)

Perspectives:

- ❖ Does diet reflect prey abundance and/or strong prey selection?
- ❖ Necessity to explore more habitats, thus more population and/or subspecies

Graph of qualitative and quantitative variables of total data, colouring by the type of prey; sex and stage represented by letters (F and M / A and J), groups by corresponding numbers. Variables explain by dimensions: 1st dimension = "Group" and "Type of prey" / 2nd dimension = "Stage" and "Type of prey".

Many thanks are due to J.-C. Monney for providing data, as well as A. Herrel, J. Marin and the technical staff of the collections and library of Reptiles and Amphibians in the Muséum National d'Histoire Naturelle (Paris, France).

Laurence F. et al. (2022?) Diet variations across remote populations of a widely distributed snake species, the Asp viper (*Vipera aspis aspis*) - 1st Peer Review.