



HAL
open science

Forest connectivity and water stress: characterization and mapping of the impact of channel incision on riparian forest status through remote sensing

Julien Godfroy, Jérôme Lejot, Luca Demarchi, Kristell Michel, Hervé Piégay

► To cite this version:

Julien Godfroy, Jérôme Lejot, Luca Demarchi, Kristell Michel, Hervé Piégay. Forest connectivity and water stress: characterization and mapping of the impact of channel incision on riparian forest status through remote sensing. RIPA-1 : First International Conference on Riparian Ecosystems Science and Management, COST-CONVERGES, Apr 2022, Bratislava, Slovakia. hal-04081252

HAL Id: hal-04081252

<https://hal.science/hal-04081252v1>

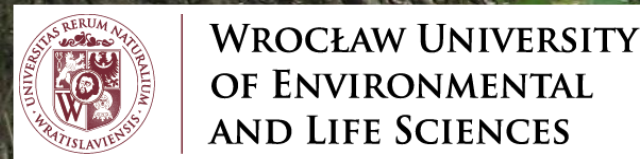
Submitted on 25 Apr 2023

HAL is a multi-disciplinary open access archive for the deposit and dissemination of scientific research documents, whether they are published or not. The documents may come from teaching and research institutions in France or abroad, or from public or private research centers.

L'archive ouverte pluridisciplinaire **HAL**, est destinée au dépôt et à la diffusion de documents scientifiques de niveau recherche, publiés ou non, émanant des établissements d'enseignement et de recherche français ou étrangers, des laboratoires publics ou privés.

Forest connectivity and water stress: characterization and mapping of the impact of channel incision on riparian forest status through remote sensing

J. Godfroy, J. Lejot, L. Demarchi, K. Michel, H. Piégay



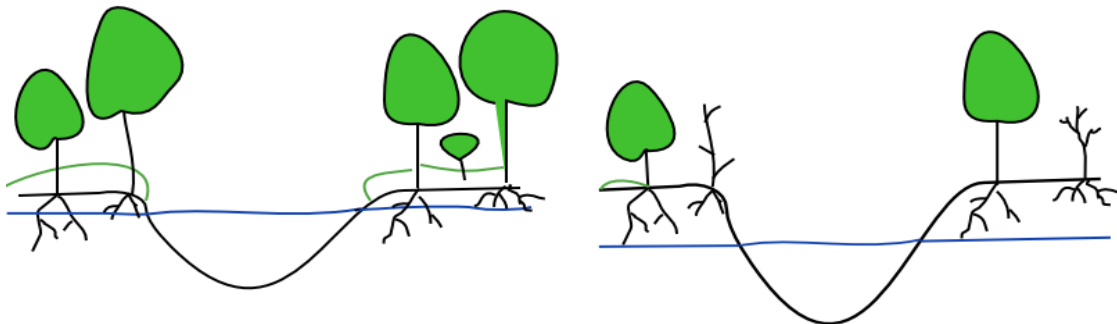
Study Site & Contextualisation

- Lower Ain River Basin:

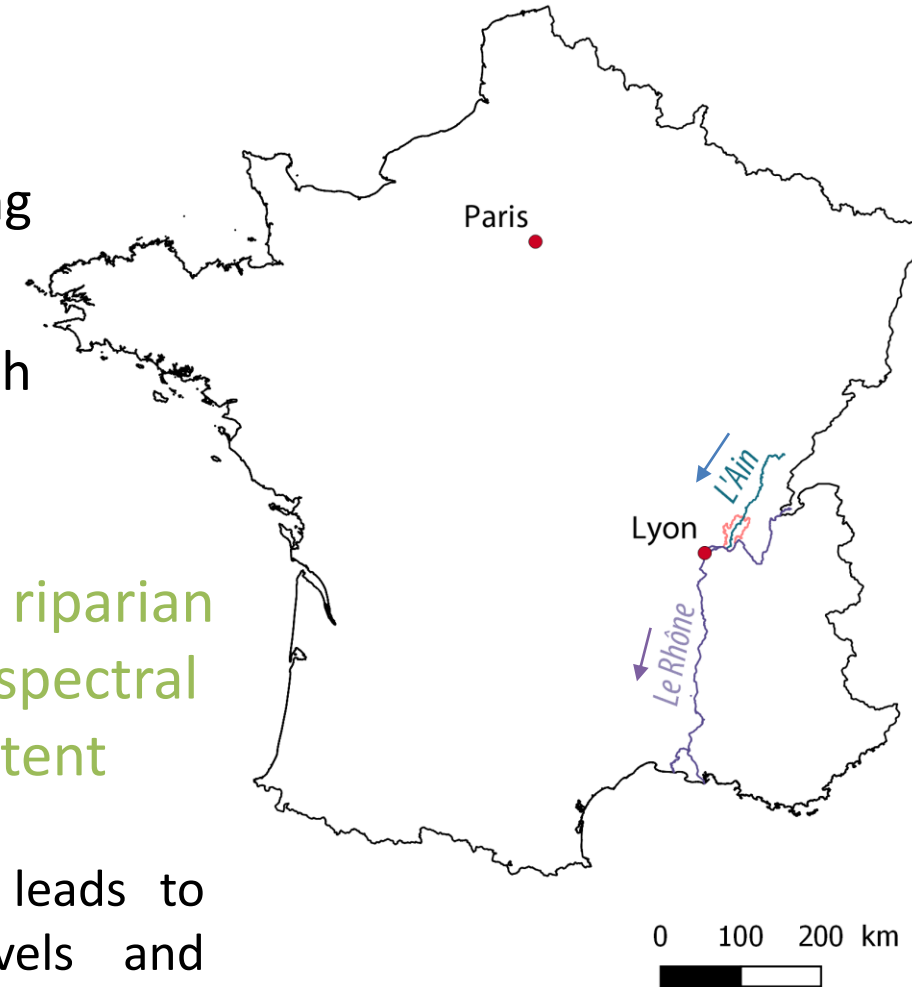
- Downstream propagation of channel incision following damming

- The age of the riparian forest is varied along the reach due to rejuvenation on a few actively shifting reaches

=> Our aim is to characterize the physical disconnection of riparian vegetation following channel incision by combining hyperspectral and LiDAR indicators of forest structure and water content



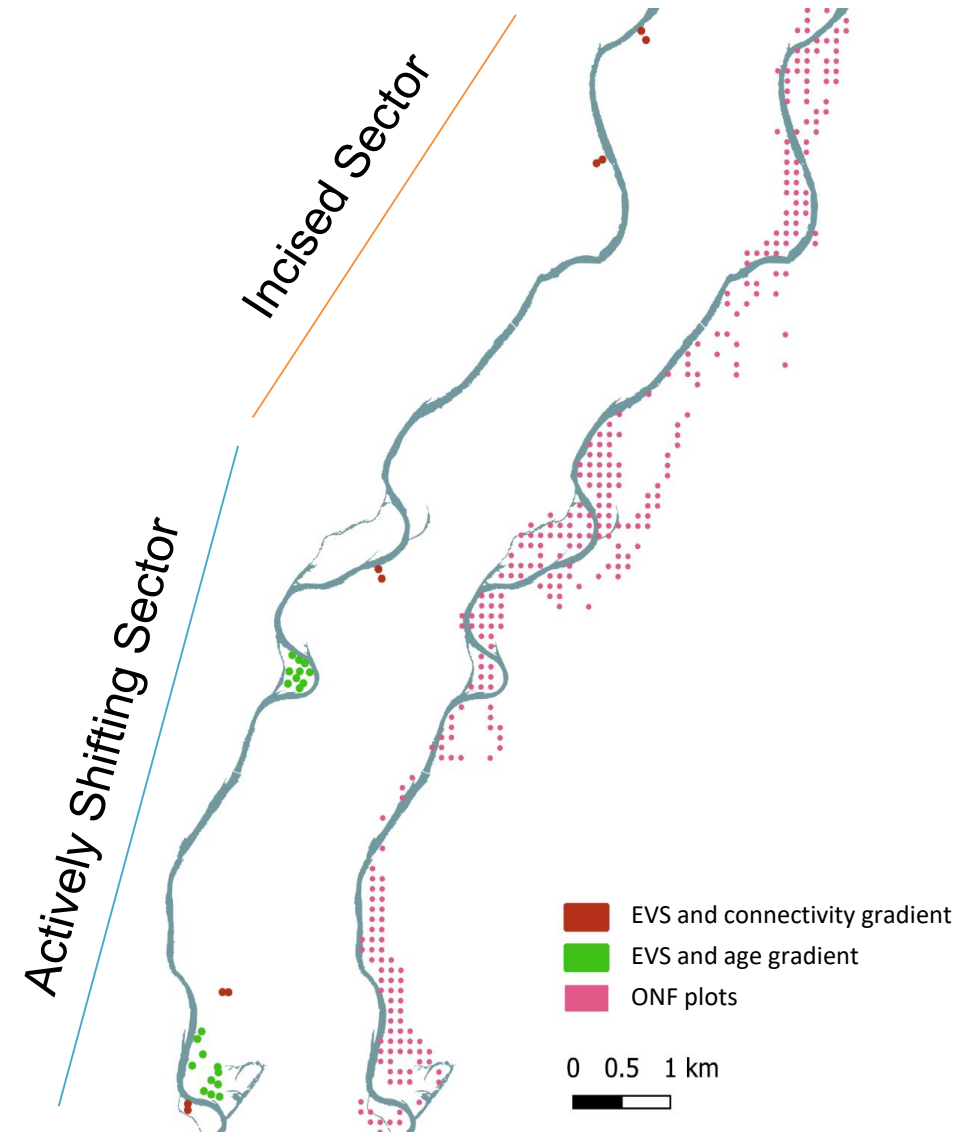
Channel incision leads to lower water levels and limits access of the riparian forest to groundwater



Data – Field Survey

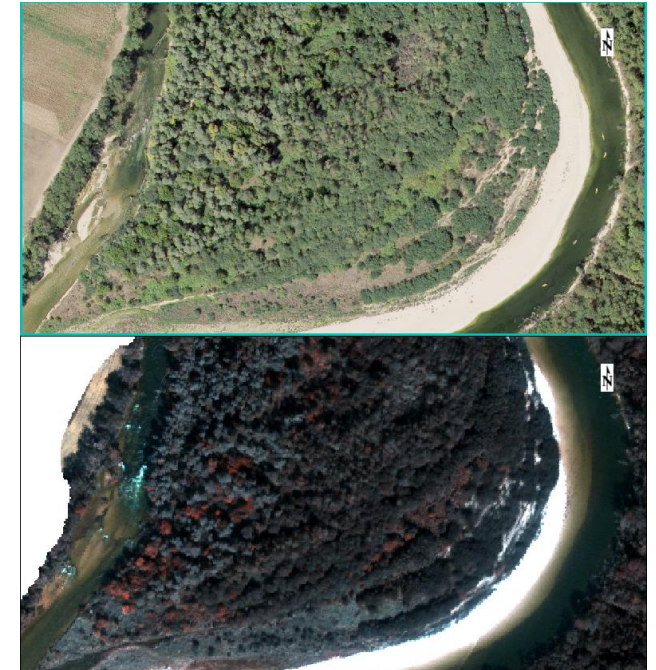
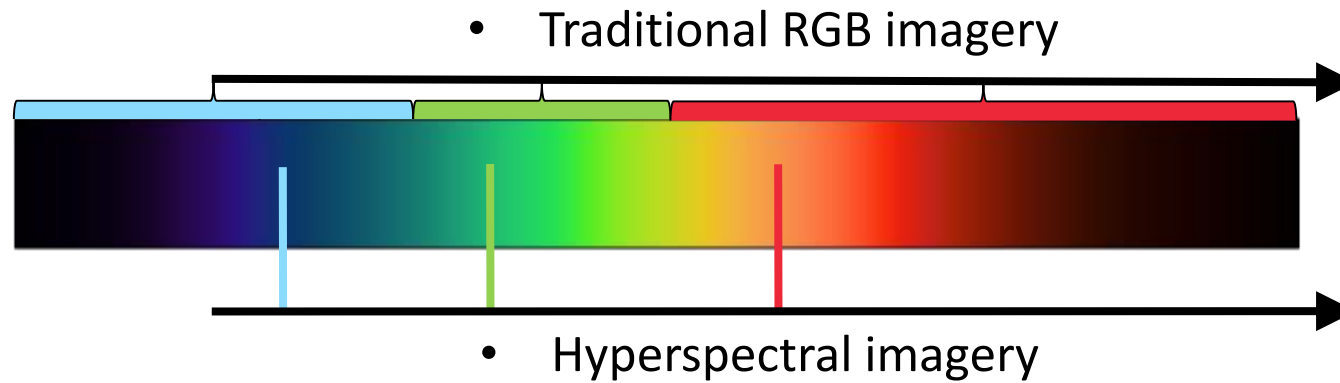
- Field Survey of Forest patches by EVS staff (2015)
 - Age gradient in young riparian forest
 - Connectivity gradient in the mature poplar forest
- Survey by the National Forestry Office (2017)
 - Systematic grid sampling of mostly mature poplar and hardwood forest cover

=> An exhaustive information about species distribution on the lower Ain River basin

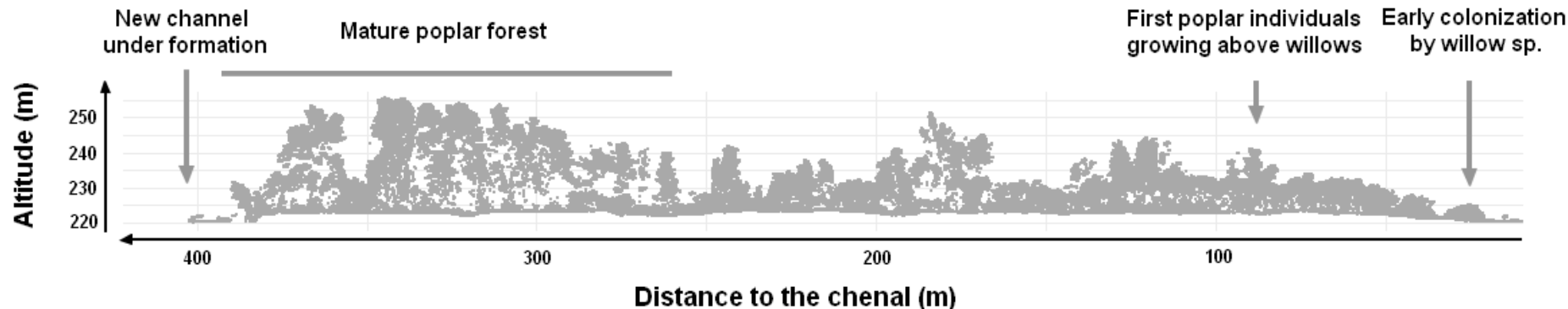


Data – Remote Sensing

- Hyperspectral Imagery (2015 ; 361 bands 380 – 2500 nm)



- LiDAR data (2015 ; 18.6 pts/m² + 2007 ground only)



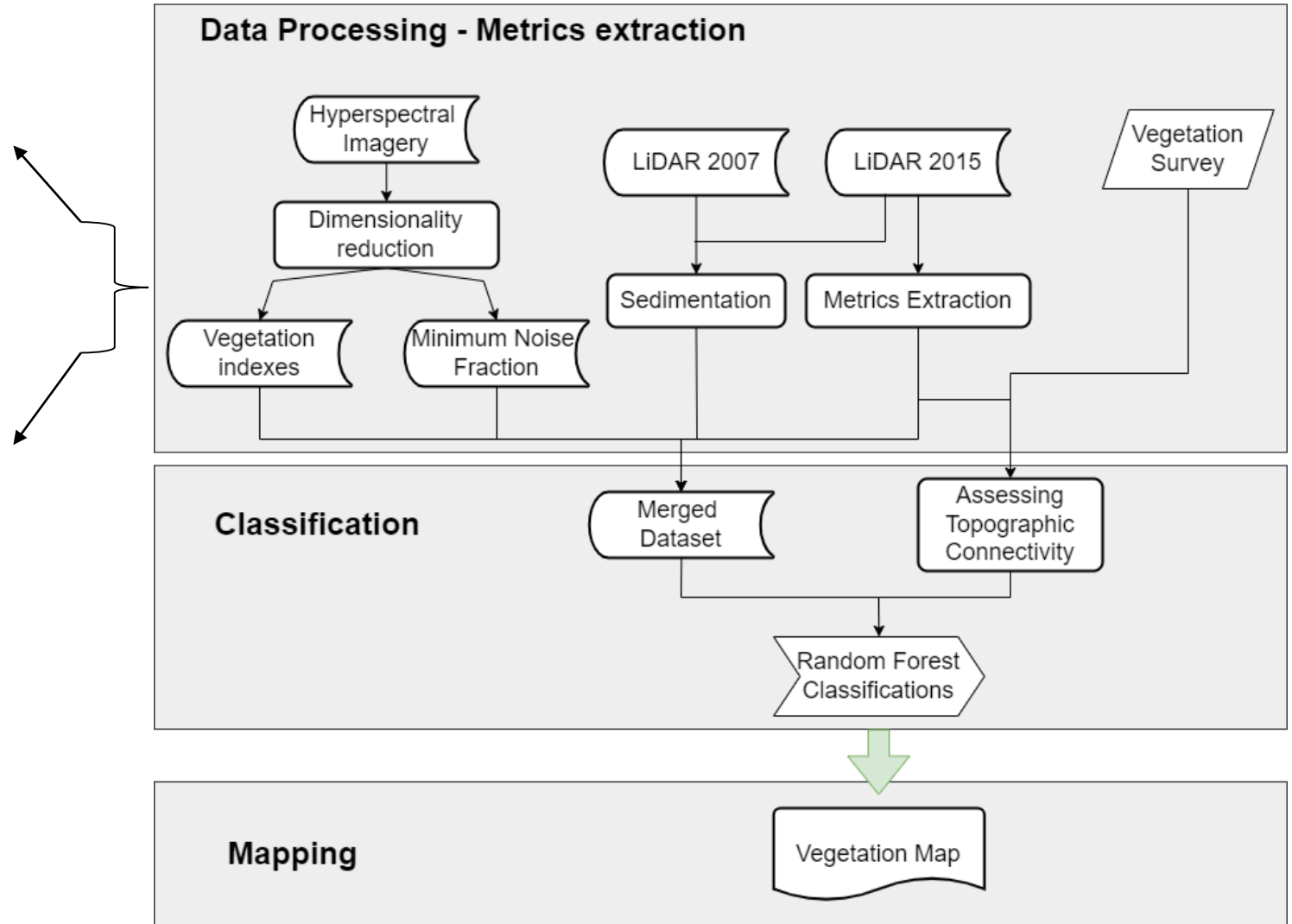
=> Novel remote sensing data covering 400 ha of riparian forest

Methodology

1° - Assessing the impact of the age gradient on the riparian forest

2° - Identifying the vertical connectivity gradient for a given age

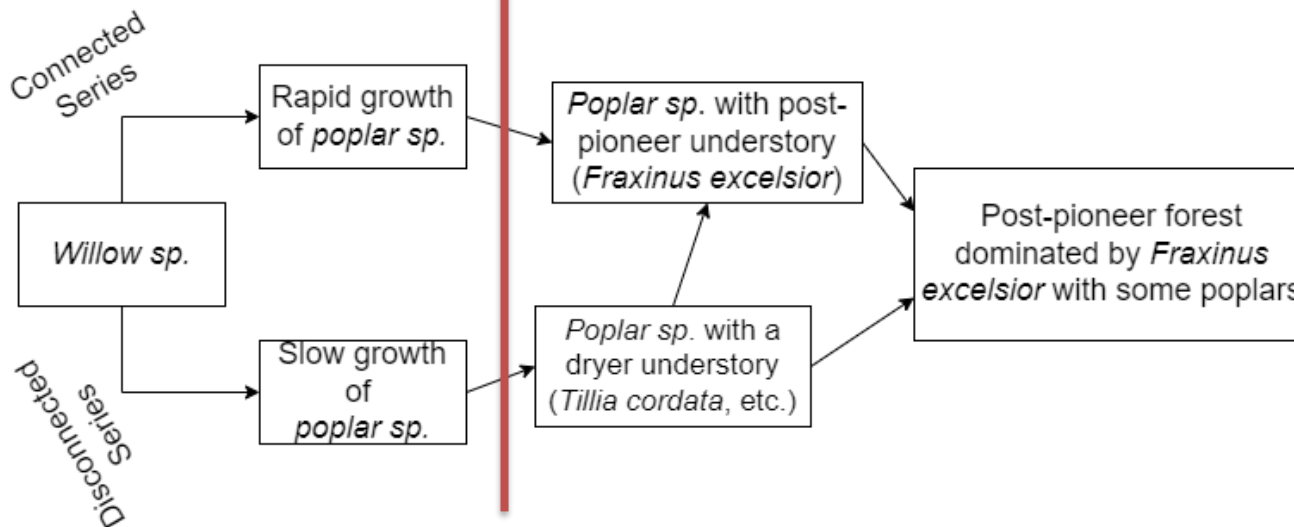
3° - Mapping connectivity through random forest classification



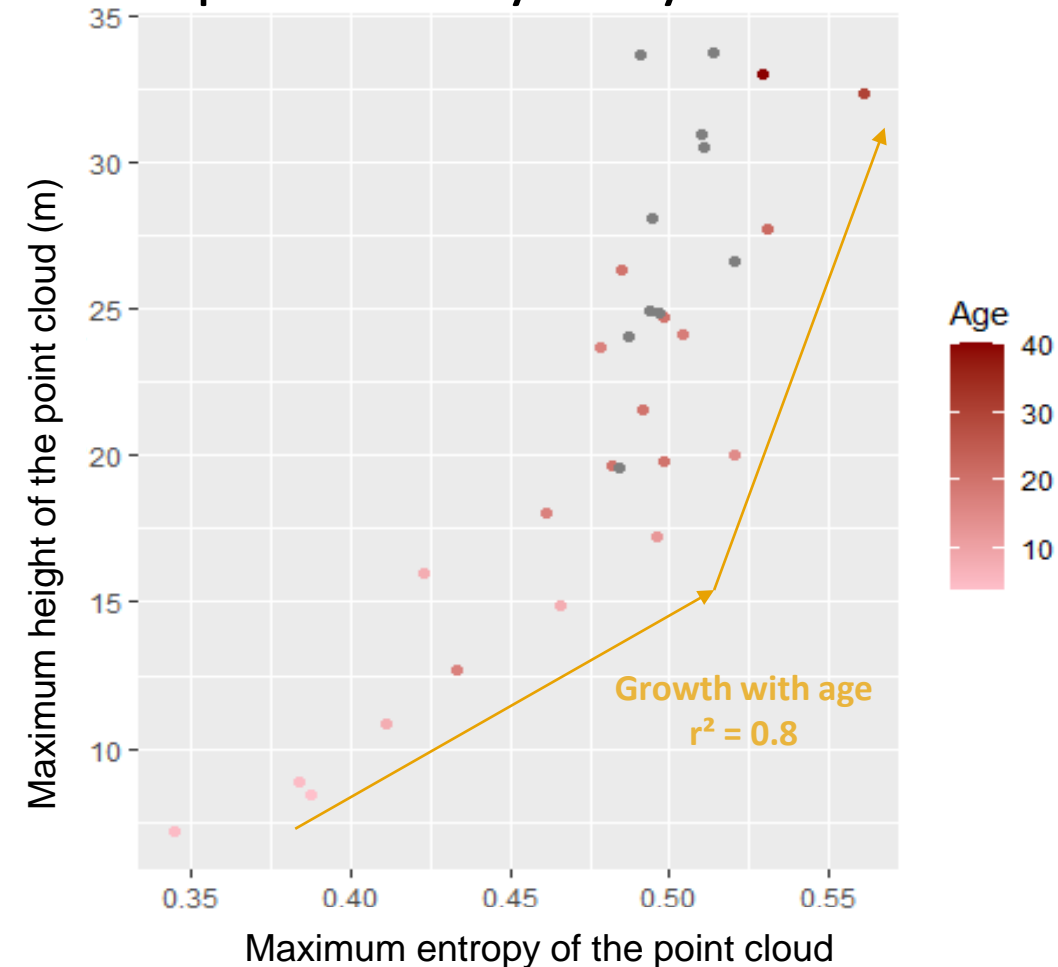
Age gradients inside the riparian forest

- With age, the forest grows and changes
 - Tree growth after colonization is correlated to age
 - Successional stages lead to the implantation of an understory and of hardwood species

Early poplar forest | Later successional stages



Structure vs. Age for plots surveyed by EVS staff



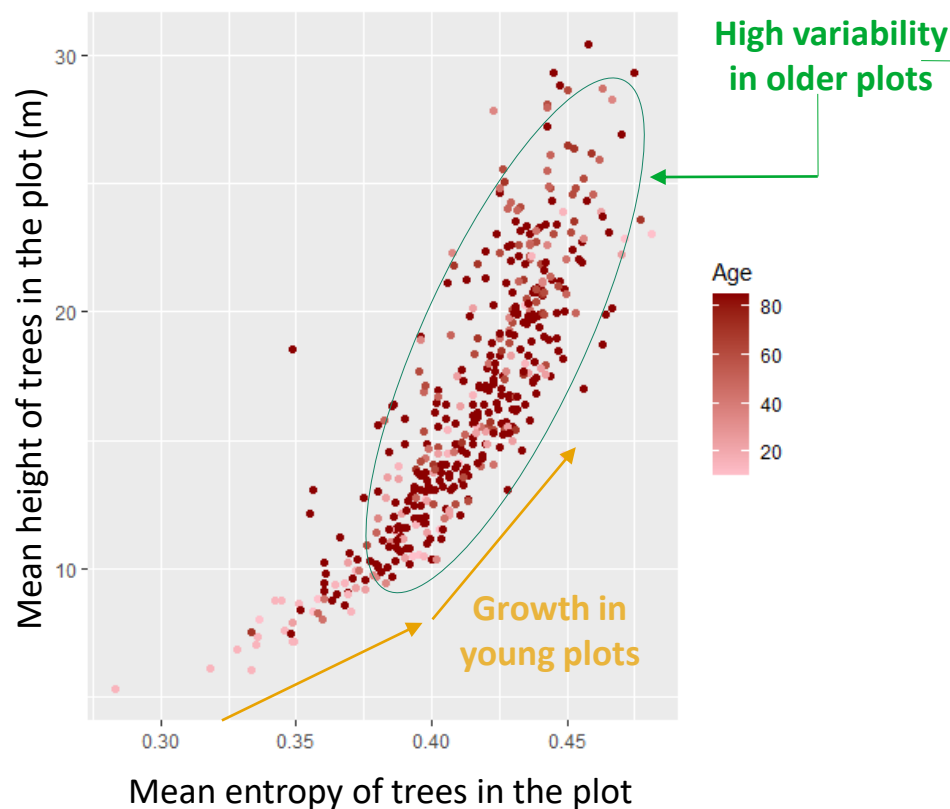
Limitations of age-based gradients

- Most of the riparian forest is old (> 50 y.o.)

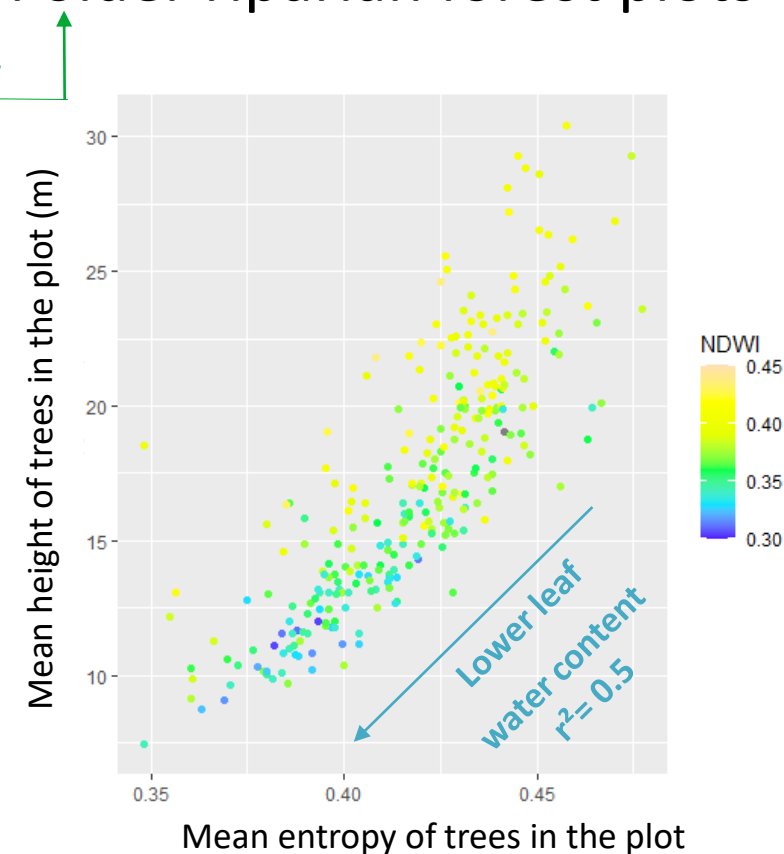
→ Structure of riparian vegetation varies a lot in older plots

→ Plot development is related to leaf water content

Structure vs. Age for ONF plots



Structure vs. Leaf Water Content in older riparian forest plots

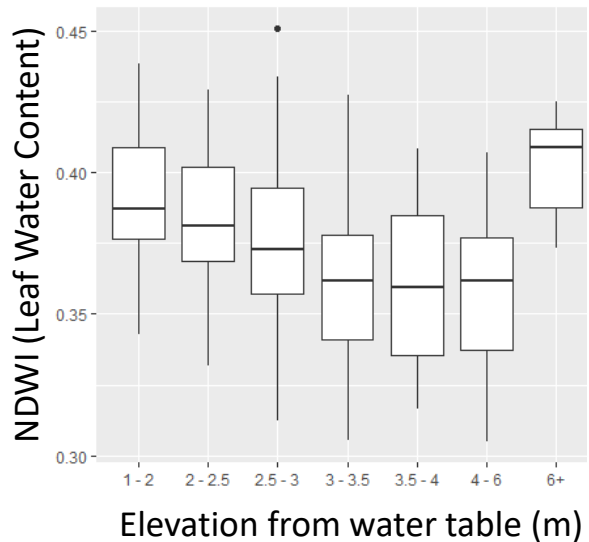


=> Access to the water resource impacts the structure of riparian forests

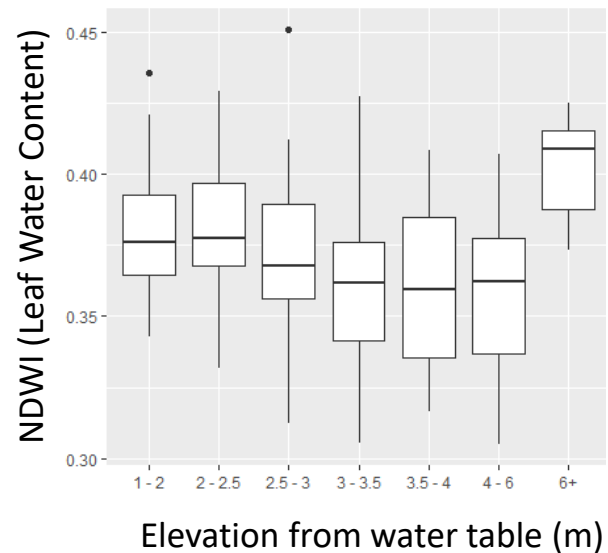
Vertical connectivity gradient

Leaf water content drops with elevation
from low flow water table

50+ y.o.

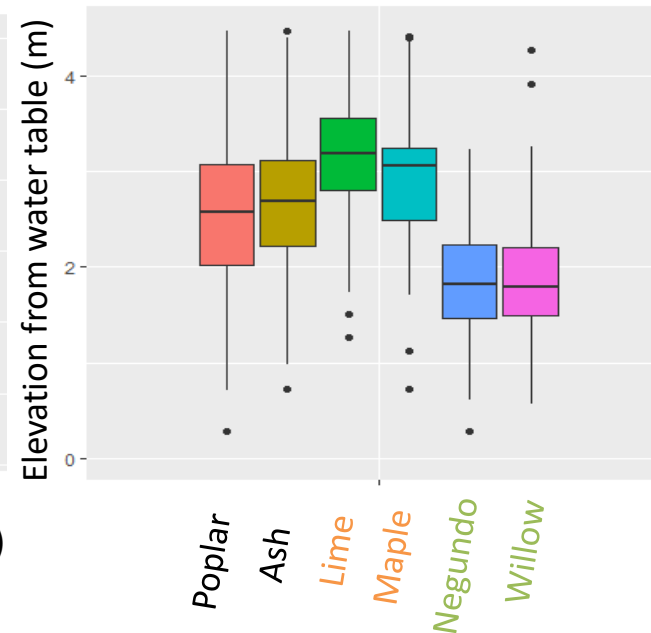


80 y.o.

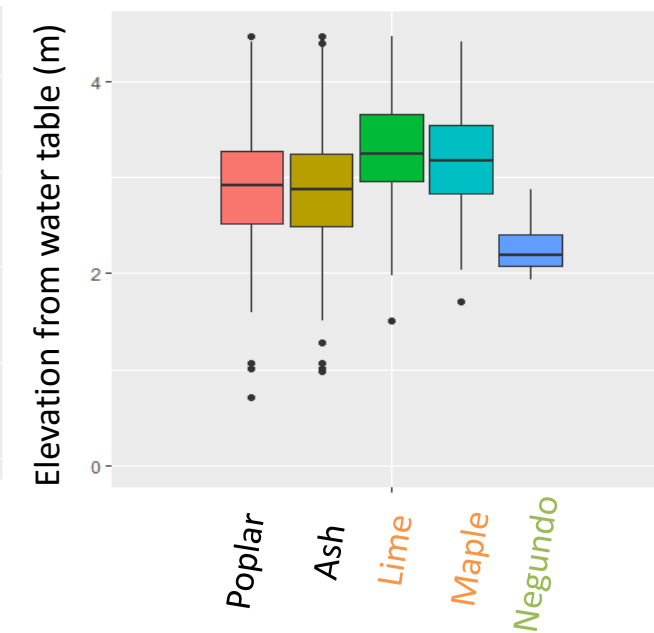


Species distribution depending on altitude
above the water level at low flow

50+ y.o.



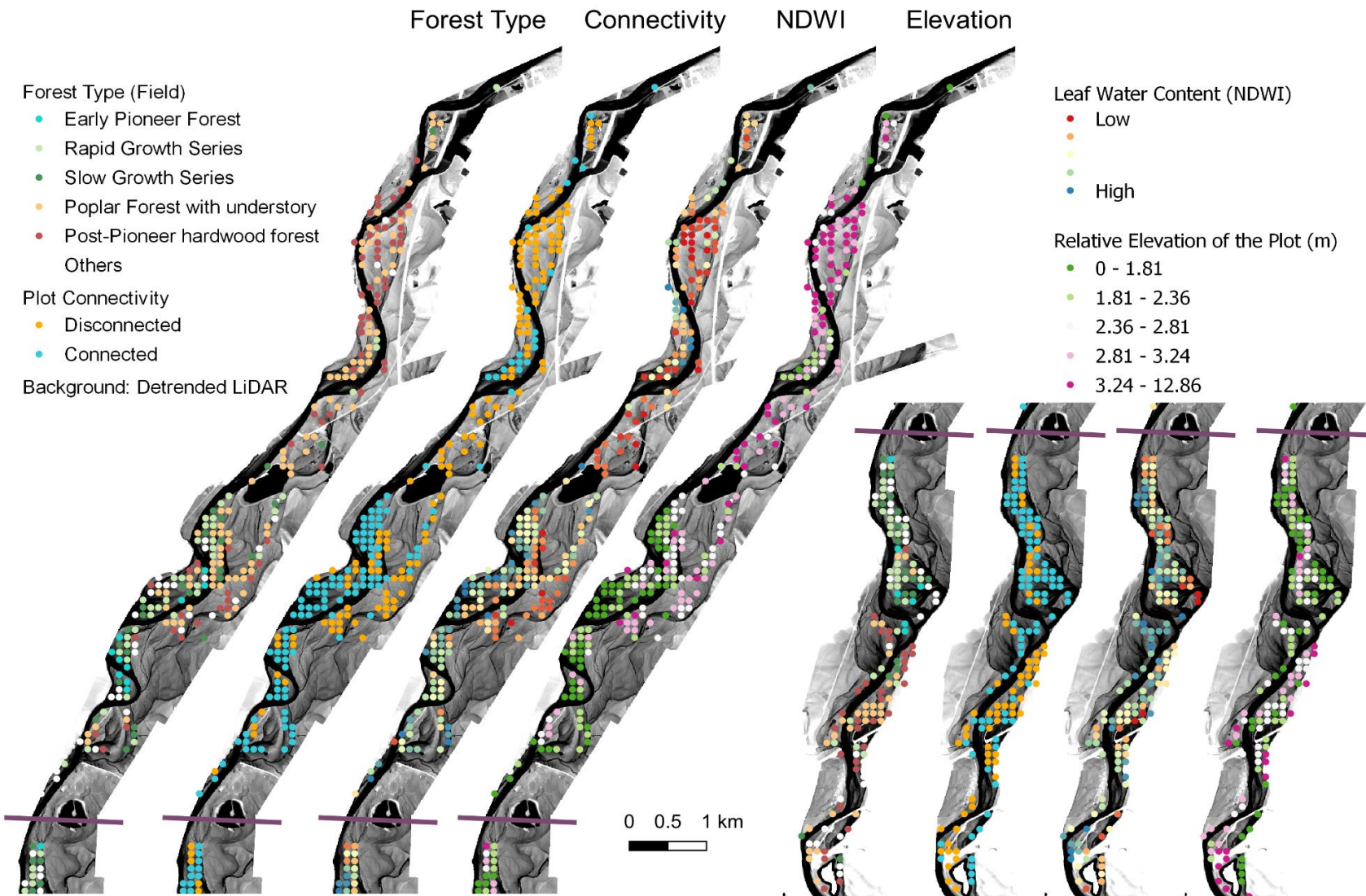
80 y.o.



=> Classification to predict vertical connectivity

Accuracy : 25% for cut-off at 2.5m

Mapping hydrological connectivity



- Forest plots affected by groundwater drop are identified

→ Clear upstream – downstream gradient of disconnectivity related to progressive channel incision due to sediment starvation

→ (Dis)-connection of old lateral channels depending on elevation

From indicating to monitoring

- Combining hyperspectral and LiDAR information is useful to identify potential drought effects on riparian vegetation
- Towards monitoring riparian forests
 - Sensitivity to seasonal variations and reproducibility?
 - Linking hyperspectral with in-field eco-physiological measurements of leaf water and water-induced stress at the tree level
 - Working at the individual tree level (e.g., crowns) rather than on forest plots



A wide river flows through a landscape with a rocky bank in the foreground. The background is filled with a dense forest of trees, many of which have yellow and orange autumn foliage. The sky is clear and blue. The text "Thank you for your attention!" is overlaid in the center of the image.

Thank you for your attention!