

# STOKES PROBLEM WITH SLIP BOUNDARY CONDITIONS USING STABILIZED FINITE ELEMENTS COMBINED WITH NITSCHÉ

RODOLFO ARAYA, ALFONSO CAIAZZO, AND FRANZ CHOULY

ABSTRACT. We discuss how slip conditions for the Stokes equation can be handled using Nitsche method, for a stabilized finite element discretization. Emphasis is made on the interplay between stabilization and Nitsche terms. Well-posedness of the discrete problem and optimal convergence rates, in natural norm for the velocity and the pressure, are established, and illustrated with various numerical experiments. The proposed method fits naturally in the context of a finite element implementation while being accurate, and allows an increased flexibility in the choice of the finite element pairs.

## 1. INTRODUCTION

Slip boundary conditions arise naturally for Stokes or Navier-Stokes equations, for instance when modelling biological surfaces [6], in slide coating [16] or in the context of turbulence modeling [33]. These are essential boundary conditions, and can be in fact considered as generalized Dirichlet conditions. These conditions are not straightforward to implement into standard finite element libraries, with the canonical techniques such as a discrete lifting or a partitioning of the global matrix especially for boundaries with variations of the unit outward normal vector. This challenge motivated several research works to study alternative approaches, often based on penalty techniques or a mixed formulation. However, the penalty methods can yield inaccurate results or a poor conditioning if the penalty parameter is not chosen with care, and the mixed formulation can be cumbersome in this context, combined with the saddle-point structure already coming from the Stokes equations.

This work presents a simple approach based on Nitsche's technique combined with a stabilized equal-order finite element method. To simplify the presentation, we focus on the Stokes equation on a polygonal boundary and without any specific law that involve the tangential components of the velocity, such as a Navier law. We consider both symmetric and non-symmetric variants of Nitsche, since they have different advantages, particularly to enforce accurately the boundary condition, see, *e.g.*, [15, 26] and references therein. The stability analysis relies on the introduction of proper stabilization terms. Notably, we are able to prove the stability with an inf-sup constant independent of the fluid viscosity. The overall method is consistent, introduces no extra unknown and can be implemented easily. To assess the properties of the method, we propose an implementation in the FEniCS environment [1] and present several numerical experiments that illustrate the simplicity, the flexibility and the accuracy of the method.

Let us frame our work in a more general perspective. The first methods to enforce slip conditions were based on Lagrange multipliers: see, *e.g.*, [31, 38, 39]. In [4] the condition was enforced pointwise at nodal values of the velocity. Many studies have been devoted to the study of penalty methods, to enforce approximately the slip condition with a regularization term. These methods are not consistent, but remain popular and very easy to implement. Moreover, penalty can be interpreted as a penetration condition with a given resistance [27]. A first work has been focused on the Navier-Stokes equation [14], and followed by [18, 19], with emphasis on the case of a curved boundary, where a Babuška-type paradox may appear. Other recent works have been devoted to the usage of penalty terms combined with Lagrange finite elements [29, 41, 42] or Crouzeix-Raviart finite elements [30, 43]. To our knowledge, Nitsche's method has been first considered in [22], as a simple, consistent and primal technique to take into account the slip condition. Notably, it has been noticed that the skew-symmetric variant of Nitsche remains operational even when the Nitsche parameter vanishes (*penalty-free* variants), a result which opened the path to further research on this topic [9, 10, 12] (see also [7] for incompressible elasticity). Later on, in [37], different variants of Nitsche have been proposed and linked, as usual, with stabilized mixed methods (following [36]). Emphasis has been once again made on the curved boundary and a possibly related Babuska-type paradox. More recently, a specific treatment of the Navier boundary condition has been studied in [40], building on the specific Nitsche-type method proposed by Juntunen & Stenberg [28] to discretize robustly Robin-type boundary conditions (see also [44]), and a symmetric Nitsche method with specific, accurate, discretization of the curved boundary, has been designed and studied in [23]. Alternatively, an approach based on a specific design of wavelet

functions has been proposed in [25]. In a recent work [3], a symmetric Nitsche method is combined with inf-sup stable pairs and a Variational MultiScale (VMS) stabilization for the Navier-Stokes equations. In [24] a stabilized mixed method for a nonlinear slip condition is described. In conclusion, we observe that almost all the aforementioned works have considered inf-sup stable pairs to discretize the Stokes equation, except [29] where the penalty method combined with a  $\mathbb{P}_1/\mathbb{P}_1$  finite element pair with pressure stabilization is taken into account.

This paper is structured as follows. Section 2 describes the model equations in strong form. The weak formulation and the corresponding functional setting is object of Section 3. Section 4 presents the discretization with finite elements, stabilization and Nitsche. Section 5 details the stability and convergence analysis. Numerical experiments are provided in Section 6.

## 2. MODEL PROBLEM

Let  $\Omega \subset \mathbb{R}^d$ ,  $d \in \{2, 3\}$ , be an open, bounded domain with Lipschitz continuous boundary  $\partial\Omega$ . We use standard notation for Lebesgue spaces  $L^q(\Omega)$ , with norm  $\|\cdot\|_{0,q,\Omega}$ , for  $q > 2$ , and  $\|\cdot\|_{0,\Omega}$  for  $q = 2$  and inner product  $(\cdot, \cdot)_\Omega$ , and Sobolev spaces  $H^m(\Omega)$ , with norm  $\|\cdot\|_{m,\Omega}$  and semi-norm  $|\cdot|_{m,\Omega}$ . The boundary  $\partial\Omega$  is partitioned into a subset  $\Gamma_D$ , where a Dirichlet boundary condition is imposed, with  $\text{meas}(\Gamma_D) > 0$ , and a subset  $\Gamma_S$ , where the slip condition is enforced. Moreover, we denote with  $\mathbf{n}$  the outer normal vector to  $\Gamma_S$ , and with  $\mathbf{t}_i$ ,  $1 \leq i \leq d-1$  the orthonormal vectors spanning the plane tangent to  $\Gamma_S$ .

We consider the Stokes equations seeking for a velocity field  $\mathbf{u} : \Omega \rightarrow \mathbb{R}^d$  and a pressure field  $p : \Omega \rightarrow \mathbb{R}$  solutions to

$$\left\{ \begin{array}{ll} -\nabla \cdot \sigma(\mathbf{u}, p) = \mathbf{f} & \text{in } \Omega, \\ \nabla \cdot \mathbf{u} = 0 & \text{in } \Omega, \\ \mathbf{u} = \mathbf{h} & \text{on } \Gamma_D, \\ \mathbf{u} \cdot \mathbf{n} = g & \text{on } \Gamma_S, \\ \sigma(\mathbf{u}, p) \mathbf{n} \cdot \mathbf{t}_i = s_i, & 1 \leq i \leq d-1 \quad \text{on } \Gamma_S. \end{array} \right. \quad (2.1)$$

In (2.1), the stress tensor is expressed as

$$\sigma(\mathbf{u}, p) := 2\nu\boldsymbol{\varepsilon}(\mathbf{u}) - p\mathbf{I},$$

the parameter  $\nu > 0$  denotes the fluid viscosity,  $\boldsymbol{\varepsilon}(\mathbf{u}) := \frac{1}{2}(\nabla\mathbf{u} + \nabla\mathbf{u}^T)$  stands for the symmetric part of the rate of deformation tensor  $\nabla\mathbf{u}$ ,  $\mathbf{f} \in L^2(\Omega)^d$  is a given source term and  $s_i \in L^2(\Gamma_S)$ .

## 3. CONTINUOUS VARIATIONAL FORMULATION

We define the Hilbert spaces

$$\begin{aligned} \mathbf{H} &:= \{ \mathbf{v} \in H^1(\Omega)^d : \mathbf{v} = \mathbf{0} \quad \text{on } \Gamma_D, \mathbf{v} \cdot \mathbf{n} = 0 \quad \text{on } \Gamma_S \}, \\ Q &:= L_0^2(\Omega), \end{aligned}$$

with their natural inner products, and consider the product space  $\mathbf{H} \times Q$  equipped with the norm

$$\|(\mathbf{v}, q)\|^2 := \nu\|\boldsymbol{\varepsilon}(\mathbf{v})\|_{0,\Omega}^2 + \|q\|_{0,\Omega}^2, \quad \forall (\mathbf{v}, q) \in \mathbf{H} \times Q.$$

We then introduce the bilinear forms

$$a : \mathbf{H} \times \mathbf{H} \rightarrow \mathbb{R}, \quad a(\mathbf{u}, \mathbf{v}) := 2\nu(\boldsymbol{\varepsilon}(\mathbf{u}), \boldsymbol{\varepsilon}(\mathbf{v}))_\Omega \quad \forall \mathbf{u}, \mathbf{v} \in \mathbf{H},$$

and

$$b : \mathbf{H} \times Q \rightarrow \mathbb{R}, \quad b(\mathbf{v}, q) := -(\nabla \cdot \mathbf{v}, q)_\Omega \quad \forall (\mathbf{v}, q) \in \mathbf{H} \times Q,$$

and consider the following variational formulation associated with problem (2.1):

**Problem 1.** Find  $(\mathbf{u}, p) \in \mathbf{H} \times Q$  such that

$$B((\mathbf{u}, p), (\mathbf{v}, q)) = F(\mathbf{v}, q), \quad (3.1)$$

for all  $(\mathbf{v}, q) \in \mathbf{H} \times Q$ , where

$$B((\mathbf{u}, p), (\mathbf{v}, q)) := a(\mathbf{u}, \mathbf{v}) + b(\mathbf{v}, p) - b(\mathbf{u}, q) \quad (3.2)$$

and

$$F(\mathbf{v}, q) := (\mathbf{f}, \mathbf{v})_\Omega + \sum_{i=1}^{d-1} \int_{\Gamma_S} s_i \mathbf{v} \cdot \mathbf{t}_i \, ds.$$

Well-posedness of Problem 1 is stated below:

**Theorem 3.1.** *Problem 1 has a unique solution  $(\mathbf{u}, p) \in \mathbf{H} \times Q$ , and there exists a positive constant  $C$  such that*

$$\|(\mathbf{u}, p)\| \leq C \left\{ \|\mathbf{f}\|_{0,\Omega} + \sum_{i=1}^{d-1} \|s_i\|_{0,\Gamma_S} \right\}.$$

*Proof.* The proof is a direct consequence of the Babuška–Brezzi theory. See also [8].  $\square$

#### 4. DISCRETE STABILIZED SCHEME

In what follows, we denote by  $\{\mathcal{T}_h\}_{h>0}$  a regular family of triangulations of  $\bar{\Omega}$  composed by simplices. For a given triangulation  $\mathcal{T}_h$ , we will denote by  $\mathcal{E}_h$  the set of all faces (edges) of  $\mathcal{T}_h$ , with the partitioning

$$\mathcal{E}_h := \mathcal{E}_\Omega \cup \mathcal{E}_D \cup \mathcal{E}_S,$$

where  $\mathcal{E}_\Omega$  stands for the faces (edges) lying in the interior of  $\Omega$ ,  $\mathcal{E}_S$  stands for the faces (edges) lying on the boundary  $\Gamma_S$ , and  $\mathcal{E}_D$  stands for the edges (faces) lying on the boundary  $\Gamma_D$ . Moreover, we will denote with  $K$  a generic element of a triangulation  $\mathcal{T}_h$ , with  $h_K$  the diameter of  $K$  and define  $h := \max_{K \in \mathcal{T}_h} h_K$ .

As next, for a given  $l \geq 1$ , we introduce the following finite element spaces:

$$\begin{aligned} \mathbf{H}_h &:= \{ \mathbf{v} \in C(\bar{\Omega})^d : \mathbf{v}|_K \in \mathbb{P}_l(K)^d, \quad \forall K \in \mathcal{T}_h \}, \\ Q_h &:= \{ q \in C(\bar{\Omega}) : q|_K \in \mathbb{P}_l(K), \quad \forall K \in \mathcal{T}_h \} \cap Q, \end{aligned}$$

where  $\mathbb{P}_l$  stands for the space of polynomials of total degree less or equal than  $l$ .

*Remark.* Note that  $Q_h$  is a subspace of  $Q$ , but  $\mathbf{H}_h$  is not a subspace of  $\mathbf{H}$ . In that sense, imposing weakly the (slip or Dirichlet) boundary conditions using Nitsche, can be considered a non-conforming finite element method.

In the sequel we will need the following well known results:

**Lemma 4.1.** [Inverse inequality] Let  $\mathbf{v}_h \in \mathbf{H}_h$  then for each  $K \in \mathcal{T}_h$ ;  $l, m \in \mathbb{N}$ , with  $0 \leq m \leq l$ , there exists a positive constant  $C_{\text{in}}$ , independent of  $K$ , such that

$$|\mathbf{v}_h|_{l,K} \leq C_{\text{in}} h_K^{m-l} |\mathbf{v}_h|_{m,K}.$$

*Proof.* See [20, Lemma 12.1].  $\square$

**Lemma 4.2.** [Trace inequality - I] Let  $\mathbf{v}_h \in \mathbf{H}_h$  then for each  $K \in \mathcal{T}_h$ ,  $E \subset \partial K$ , there exists a positive constant  $C_{\text{tr}}$ , independent of  $K$ , such that

$$\|\mathbf{v}_h\|_{0,E} \leq C_{\text{tr}} h_K^{-\frac{1}{2}} \|\mathbf{v}_h\|_{0,K}.$$

*Proof.* See [20, Lemma 12.8].  $\square$

**Lemma 4.3.** [Trace inequality - II] Let  $v \in H^1(K)$ , with  $K \in \mathcal{T}_h$ . Then for any face (edge)  $E \subset \partial K$ , there exists a positive constant  $C'_{\text{tr}}$ , independent of  $K$ , such that

$$\|v\|_{0,E} \leq C'_{\text{tr}} \left\{ h_K^{-1/2} \|v\|_{0,K} + h_K^{1/2} \|\nabla v\|_{0,K} \right\}$$

*Proof.* Use [20, Lemma 12.15] and Young's inequality.  $\square$

To define our stabilized scheme, we start by defining the following notation

$$\langle \phi, \psi \rangle_{1/2,h,\mathcal{E}_i} := \sum_{E \in \mathcal{E}_i} \frac{1}{h_E} (\phi, \psi)_E,$$

where  $i = D$  or  $S$ .

Let  $\theta \in \{-1, 0, 1\}$ . For a given Nitsche parameter  $\gamma_0 > 0$  and a given stabilization parameter  $\beta > 0$ , the considered stabilized discrete scheme is given by:

**Problem 2.** *Find  $(\mathbf{u}_h, p_h) \in \mathbf{H}_h \times Q_h$  such that*

$$B_S((\mathbf{u}_h, p_h), (\mathbf{v}_h, q_h)) = F_S(\mathbf{v}_h, q_h) \quad \forall (\mathbf{v}_h, q_h) \in \mathbf{H}_h \times Q_h, \quad (4.1)$$

where

$$\begin{aligned}
B_S((\mathbf{u}_h, p_h), (\mathbf{v}_h, q_h)) &:= B((\mathbf{u}_h, p_h), (\mathbf{v}_h, q_h)) - 2\nu(\boldsymbol{\varepsilon}(\mathbf{u}_h)\mathbf{n}, \mathbf{v}_h)_{\Gamma_D} - 2\theta\nu(\boldsymbol{\varepsilon}(\mathbf{v}_h)\mathbf{n}, \mathbf{u}_h)_{\Gamma_D} \\
&\quad + \nu\langle\gamma_0 \mathbf{u}_h, \mathbf{v}_h\rangle_{1/2, h, \Gamma_D} + (p_h, \mathbf{v}_h \cdot \mathbf{n})_{\Gamma_D} + \theta(q_h, \mathbf{u}_h \cdot \mathbf{n})_{\Gamma_D} \\
&\quad - 2\nu(\boldsymbol{\varepsilon}(\mathbf{u}_h)\mathbf{n} \cdot \mathbf{n}, \mathbf{v}_h \cdot \mathbf{n})_{\Gamma_S} - 2\theta\nu(\boldsymbol{\varepsilon}(\mathbf{v}_h)\mathbf{n} \cdot \mathbf{n}, \mathbf{u}_h \cdot \mathbf{n})_{\Gamma_S} \\
&\quad + \nu\langle\gamma_0 \mathbf{u}_h \cdot \mathbf{n}, \mathbf{v}_h \cdot \mathbf{n}\rangle_{1/2, h, \Gamma_S} + (p_h, \mathbf{v}_h \cdot \mathbf{n})_{\Gamma_S} + \theta(q_h, \mathbf{u}_h \cdot \mathbf{n})_{\Gamma_S} \\
&\quad + \frac{\beta}{\nu} \sum_{K \in \mathcal{T}_h} h_K^2 (-2\nu \nabla \cdot \boldsymbol{\varepsilon}(\mathbf{u}_h) + \nabla p_h, \nabla q_h)_K
\end{aligned} \tag{4.2}$$

and

$$\begin{aligned}
F_S(\mathbf{v}_h, q_h) &:= F(\mathbf{v}_h, q_h) - 2\nu\theta(\mathbf{h}, \boldsymbol{\varepsilon}(\mathbf{v}_h)\mathbf{n})_{\Gamma_D} + \theta(\mathbf{h} \cdot \mathbf{n}, q_h)_{\Gamma_D} + \nu\langle\gamma_0 \mathbf{h}, \mathbf{v}_h\rangle_{1/2, h, \Gamma_D} \\
&\quad - 2\nu\theta(g, \boldsymbol{\varepsilon}(\mathbf{v}_h)\mathbf{n} \cdot \mathbf{n})_{\Gamma_S} + \theta(g, q_h)_{\Gamma_S} + \nu\langle\gamma_0 g, \mathbf{v}_h \cdot \mathbf{n}\rangle_{1/2, h, \Gamma_S} \\
&\quad + \frac{\beta}{\nu} \sum_{K \in \mathcal{T}_h} h_K^2 (\mathbf{f}, \nabla q_h)_K.
\end{aligned} \tag{4.3}$$

The bilinear form (4.2) contains, besides the standard terms of the weak form of the Stokes equations, the Nitsche terms on the Dirichlet boundary ( $\Gamma_D$ , first and second line), the Nitsche terms on the slip boundary ( $\Gamma_S$ , third and fourth lines), and the stabilization term (fifth line).

The different choices of the parameter  $\theta$  allow to recover three variants of the method as for Nitsche for Dirichlet boundary condition [15] and as for the discontinuous Galerkin Interior Penalty (dGIP) method [17]:

- (1) For  $\theta = 1$ , the method is symmetric in the spirit of Nitsche's original formulation [34]. It can be built alternatively from an augmented Lagrangian formalism, see [13, Section 5.2.2].
- (2) For  $\theta = 0$ , we get the simplest, incomplete, formulation, that has the less terms, and that is presented for instance in [21, Section 37.1].
- (3) For  $\theta = -1$ , we recover the skew-symmetric formulation of J. Freund and R. Stenberg [22], where discrete ellipticity is ensured for any  $\gamma_0 > 0$ .

We state below a consistency result:

**Lemma 4.4** (Consistency). Let  $(\mathbf{u}, p) \in \mathbf{H} \times Q$  and  $(\mathbf{u}_h, p_h) \in \mathbf{H}_h \times Q_h$  be the solutions to Problem (3.1) and Problem (4.1), respectively. Assume that  $(\mathbf{u}, p) \in (H^2(\Omega)^d \cap \mathbf{H}) \times (H^1(\Omega) \cap Q)$ , then

$$B_S((\mathbf{u} - \mathbf{u}_h, p - p_h), (\mathbf{v}_h, q_h)) = 0 \quad \forall (\mathbf{v}_h, q_h) \in \mathbf{H}_h \times Q_h.$$

*Proof.* The proof is a direct consequence of the definition of Problem (3.1) and Problem (4.1), combined with the regularity assumptions.  $\square$

Over  $\mathbf{H}_h \times Q_h$ , we consider the discrete norm

$$\|(\mathbf{v}_h, q_h)\|_h := \left( \nu \|\boldsymbol{\varepsilon}(\mathbf{v}_h)\|_{0, \Omega}^2 + \sum_{E \in \mathcal{E}_D} \frac{\nu}{h_E} \|\mathbf{v}_h\|_{0, E}^2 + \sum_{E \in \mathcal{E}_S} \frac{\nu}{h_E} \|\mathbf{v}_h \cdot \mathbf{n}\|_{0, E}^2 + \sum_{K \in \mathcal{T}_h} \frac{h_K^2}{\nu} \|\nabla q_h\|_{0, K}^2 \right)^{1/2}.$$

We state below the continuity of the discrete bilinear form.

**Theorem 4.5.** For  $\theta = -1, 0, 1$ , there exists a positive constant  $C_a$ , independent of  $h$ ,  $\nu$ , and  $\theta$ , such that

$$B_S((\mathbf{u}_h, p_h), (\mathbf{v}_h, q_h)) \leq C_a \|(\mathbf{u}_h, p_h)\| \|(\mathbf{v}_h, q_h)\| \quad \forall (\mathbf{u}_h, p_h), (\mathbf{v}_h, q_h) \in \mathbf{H}_h \times Q_h.$$

*Proof.* This is as a direct consequence of lemmas 4.1, 4.2, Cauchy-Schwarz and Hölder inequalities.  $\square$

The well-posedness of our finite element discretization is established as follows.

**Theorem 4.6** (Well-posedness). For  $\theta = -1, 0, 1$ , for  $\gamma_0$  large enough and for  $\beta$  small enough, there exists a positive constant  $C_S = C_S(\theta, \beta, \gamma_0)$ , independent on  $h$  and  $\nu$ , such that,

$$B_S((\mathbf{u}_h, p_h), (\mathbf{u}_h, p_h)) \geq C_S \|(\mathbf{u}_h, p_h)\|_h^2 \quad \forall (\mathbf{u}_h, p_h) \in \mathbf{H}_h \times Q_h.$$

As a result, Problem (4.1) admits a unique solution. The bounds on the parameters  $\beta$  and  $\gamma_0$  depend only on the trace and inverse inequality constants. Moreover, in the skew-symmetric case  $\theta = -1$ , well-posedness can be proven for any  $\gamma_0 > 0$ .

*Proof.*

$\theta = -1$ . Take  $(\mathbf{u}_h, p_h) \in \mathbf{H}_h \times Q_h$ . Using Lemma 4.1, Hölder and Young inequalities, we get that

$$\begin{aligned}
2\beta h_K^2 (\nabla \cdot \boldsymbol{\varepsilon}(\mathbf{u}_h), \nabla p_h)_K &\leq 2\beta h_K^2 \|\nabla \cdot \boldsymbol{\varepsilon}(\mathbf{u}_h)\|_{0,K} \|\nabla p_h\|_{0,K} \\
&= 2\beta \nu^{\frac{1}{2}} \|\nabla \cdot \boldsymbol{\varepsilon}(\mathbf{u}_h)\|_{0,K} h_K^2 \nu^{-\frac{1}{2}} \|\nabla p_h\|_{0,K} \\
&\leq 2\beta \left( \frac{\delta_1}{2} C_{\text{in}}^2 \nu \|\boldsymbol{\varepsilon}(\mathbf{u}_h)\|_{0,K}^2 + \frac{1}{2\delta_1} \frac{h_K^2}{\nu} \|\nabla p_h\|_{0,K}^2 \right) \\
&\leq \beta C_{\text{in}}^2 \delta_1 \nu \|\boldsymbol{\varepsilon}(\mathbf{u}_h)\|_{0,K}^2 + \frac{\beta}{\delta_1} \frac{h_K^2}{\nu} \|\nabla p_h\|_{0,K}^2,
\end{aligned} \tag{4.4}$$

with  $\delta_1$  a positive parameter to be chosen in a convenient way. Now, using (4.4) and the definition of  $B_S$ , with  $\theta = -1$ , we obtain

$$\begin{aligned}
B_S((\mathbf{u}_h, p_h), (\mathbf{u}_h, p_h)) &= 2\nu \|\boldsymbol{\varepsilon}(\mathbf{u}_h)\|_{0,\Omega}^2 + \nu \langle \gamma_0 \mathbf{u}_h, \mathbf{u}_h \rangle_{1/2,h,\Gamma_D} + \nu \langle \gamma_0 \mathbf{u}_h \cdot \mathbf{n}, \mathbf{u}_h \cdot \mathbf{n} \rangle_{1/2,h,\Gamma_S} \\
&+ \frac{\beta}{\nu} \sum_{K \in \mathcal{T}_h} h_K^2 (-2\nu \nabla \cdot \boldsymbol{\varepsilon}(\mathbf{u}_h) + \nabla p_h, \nabla p_h)_K \\
&= 2\nu \|\boldsymbol{\varepsilon}(\mathbf{u}_h)\|_{0,\Omega}^2 + \nu \sum_{E \in \mathcal{E}_D} \frac{\gamma_0}{h_E} \|\mathbf{u}_h\|_{0,E}^2 + \nu \sum_{E \in \mathcal{E}_S} \frac{\gamma_0}{h_E} \|\mathbf{u}_h \cdot \mathbf{n}\|_{0,E}^2 \\
&+ \frac{\beta}{\nu} \sum_{K \in \mathcal{T}_h} h_K^2 \|\nabla p_h\|_{0,K}^2 - 2\beta \sum_{K \in \mathcal{T}_h} h_K^2 (\nabla \cdot \boldsymbol{\varepsilon}(\mathbf{u}_h), \nabla p_h)_K \\
&\geq (2 - \beta C_{\text{in}}^2 \delta_1) \nu \|\boldsymbol{\varepsilon}(\mathbf{u}_h)\|_{0,\Omega}^2 + \nu \sum_{E \in \mathcal{E}_D} \frac{\gamma_0}{h_E} \|\mathbf{u}_h\|_{0,E}^2 + \nu \sum_{E \in \mathcal{E}_S} \frac{\gamma_0}{h_E} \|\mathbf{u}_h \cdot \mathbf{n}\|_{0,E}^2 \\
&+ \beta \left(1 - \frac{1}{\delta_1}\right) \sum_{K \in \mathcal{T}_h} \frac{h_K^2}{\nu} \|\nabla p_h\|_{0,K}^2.
\end{aligned}$$

Now, choosing  $\delta_1 = 2$  and the stabilization parameter  $\beta$  such that  $\beta < C_{\text{in}}^{-2}$  we obtain that there exists a positive constant

$$C_S = \min \left\{ 2(1 - \beta C_{\text{in}}^2), \gamma_0, \frac{\beta}{2} \right\}, \tag{4.5}$$

independent of  $h$  and  $\nu$ , such that

$$B_S((\mathbf{u}_h, p_h), (\mathbf{u}_h, p_h)) \geq C_S \|(\mathbf{u}_h, p_h)\|_h^2,$$

which proves that the problem is well posed.

$\theta = 0$ . Using Lemma 4.2, Hölder and Young inequalities, we have that

$$\begin{aligned}
2\nu (\boldsymbol{\varepsilon}(\mathbf{u}_h) \mathbf{n} \cdot \mathbf{n}, \mathbf{u}_h \cdot \mathbf{n})_{\Gamma_S} &\leq 2\nu \sum_{E \in \mathcal{E}_S} \|\boldsymbol{\varepsilon}(\mathbf{u}_h) \mathbf{n}\|_{0,E} \|\mathbf{u}_h \cdot \mathbf{n}\|_{0,E} \\
&= 2\nu \sum_{E \in \mathcal{E}_S} h_E^{1/2} \|\boldsymbol{\varepsilon}(\mathbf{u}_h) \mathbf{n}\|_{0,E} h_E^{-1/2} \|\mathbf{u}_h \cdot \mathbf{n}\|_{0,E} \\
&\leq 2\nu \sum_{E \in \mathcal{E}_S} \left( \frac{h_E \delta_2}{2} \|\boldsymbol{\varepsilon}(\mathbf{u}_h)\|_{0,E}^2 + \frac{h_E^{-1}}{2\delta_2} \|\mathbf{u}_h \cdot \mathbf{n}\|_{0,E}^2 \right) \\
&\leq \nu \delta_2 C_{\text{tr}}^2 \sum_{K \in \mathcal{T}_h} \|\boldsymbol{\varepsilon}(\mathbf{u}_h)\|_{0,K}^2 + \frac{\nu}{\delta_2} \sum_{E \in \mathcal{E}_S} \frac{1}{h_E} \|\mathbf{u}_h \cdot \mathbf{n}\|_{0,E}^2 \\
&\leq \delta_2 C_{\text{tr}}^2 \nu \|\boldsymbol{\varepsilon}(\mathbf{u}_h)\|_{0,\Omega}^2 + \frac{\nu}{\delta_2} \langle \mathbf{u}_h \cdot \mathbf{n}, \mathbf{u}_h \cdot \mathbf{n} \rangle_{1/2,h,\Gamma_S}.
\end{aligned} \tag{4.6}$$

Using again the same arguments it is easy to prove, for any  $\delta_3 > 0$ , that

$$2\nu (\boldsymbol{\varepsilon}(\mathbf{u}_h) \mathbf{n}, \mathbf{u}_h)_{\Gamma_D} \leq \delta_3 C_{\text{tr}}^2 \nu \|\boldsymbol{\varepsilon}(\mathbf{u}_h)\|_{0,\Omega}^2 + \frac{\nu}{\delta_3} \langle \mathbf{u}_h, \mathbf{u}_h \rangle_{1/2,h,\Gamma_D}. \tag{4.7}$$

On the other hand, using lemmas 4.1 and 4.2, and Hölder's inequality, we have that

$$\begin{aligned}
(p_h, \mathbf{u}_h \cdot \mathbf{n})_{\Gamma_S} &\leq \sum_{E \in \mathcal{E}_S} \|p_h\|_{0,E} \|\mathbf{u}_h \cdot \mathbf{n}\|_{0,E} \\
&= \sum_{E \in \mathcal{E}_S} \nu^{-\frac{1}{2}} h_E^{1/2} \|p_h\|_{0,E} \nu^{\frac{1}{2}} h_E^{-1/2} \|\mathbf{u}_h \cdot \mathbf{n}\|_{0,E} \\
&\leq \sum_{E \in \mathcal{E}_S} \frac{h_E \delta_4}{2\nu} \|p_h\|_{0,E}^2 + \sum_{E \in \mathcal{E}_S} \nu \frac{h_E^{-1}}{2\delta_4} \|\mathbf{u}_h \cdot \mathbf{n}\|_{0,E}^2 \\
&\leq \sum_{K \in \mathcal{T}_h} \frac{C_{\text{tr}}^2 \delta_4}{2\nu} \|p_h\|_{0,K}^2 + \frac{1}{2\delta_4} \sum_{E \in \mathcal{E}_S} \frac{\nu}{h_E} \|\mathbf{u}_h \cdot \mathbf{n}\|_{0,E}^2 \\
&\leq \frac{C_{\text{in}}^2 C_{\text{tr}}^2 \delta_4}{2} \sum_{K \in \mathcal{T}_h} \frac{h_K^2}{\nu} \|\nabla p_h\|_{0,K}^2 + \frac{\nu}{2\delta_4} \langle \mathbf{u}_h \cdot \mathbf{n}, \mathbf{u}_h \cdot \mathbf{n} \rangle_{1/2,h,\Gamma_S}.
\end{aligned} \tag{4.8}$$

In the same way, we can prove that

$$(p_h, \mathbf{u}_h \cdot \mathbf{n})_{\Gamma_D} \leq \frac{C_{\text{in}}^2 C_{\text{tr}}^2 \delta_5}{2} \sum_{K \in \mathcal{T}_h} \frac{h_K^2}{\nu} \|\nabla p_h\|_{0,K}^2 + \frac{\nu}{2\delta_5} \langle \mathbf{u}_h, \mathbf{u}_h \rangle_{1/2,h,\Gamma_D}. \tag{4.9}$$

Thus, using (4.4)–(4.9), and Young's inequality we get

$$\begin{aligned}
B_S((\mathbf{u}_h, p_h), (\mathbf{u}_h, p_h)) &= 2\nu \|\boldsymbol{\varepsilon}(\mathbf{u})\|_{0,\Omega}^2 - 2\nu \langle \boldsymbol{\varepsilon}(\mathbf{u}) \mathbf{n}, \mathbf{u}_h \rangle_{\Gamma_D} + \nu \langle \gamma_0 \mathbf{u}_h, \mathbf{u}_h \rangle_{1/2,h,\Gamma_D} + (p_h, \mathbf{u}_h \cdot \mathbf{n})_{\Gamma_D} \\
&\quad - 2\nu \langle \boldsymbol{\varepsilon}(\mathbf{u}) \mathbf{n} \cdot \mathbf{n}, \mathbf{u}_h \cdot \mathbf{n} \rangle_{\Gamma_S} + \nu \langle \gamma_0 \mathbf{u}_h \cdot \mathbf{n}, \mathbf{u}_h \cdot \mathbf{n} \rangle_{1/2,h,\Gamma_S} + (p_h, \mathbf{u}_h \cdot \mathbf{n})_{\Gamma_S} \\
&\quad + \frac{\beta}{\nu} \sum_{K \in \mathcal{T}_h} h_K^2 (-2\nu \nabla \cdot \boldsymbol{\varepsilon}(\mathbf{u}_h) + \nabla p_h, \nabla p_h)_K \\
&\geq (2 - \delta_2 C_{\text{tr}}^2 - \delta_3 C_{\text{tr}}^2 - \beta C_{\text{in}}^2 \delta_1) \nu \|\boldsymbol{\varepsilon}(\mathbf{u})\|_{0,\Omega}^2 + \left( \gamma_0 - \frac{1}{\delta_3} - \frac{1}{2\delta_5} \right) \nu \langle \mathbf{u}_h, \mathbf{u}_h \rangle_{1/2,h,\Gamma_D} \\
&\quad + \left( \gamma_0 - \frac{1}{\delta_2} - \frac{1}{2\delta_4} \right) \nu \langle \mathbf{u}_h \cdot \mathbf{n}, \mathbf{u}_h \cdot \mathbf{n} \rangle_{1/2,h,\Gamma_S} + \left( \beta - \frac{\beta}{\delta_1} - \frac{C_{\text{in}}^2 C_{\text{tr}}^2 \delta_4}{2} - \frac{C_{\text{in}}^2 C_{\text{tr}}^2 \delta_5}{2} \right) \sum_{K \in \mathcal{T}_h} \frac{h_K^2}{\nu} \|\nabla p_h\|_{0,K}^2.
\end{aligned}$$

The positive parameters  $\delta_1$ ,  $\delta_2$ ,  $\delta_3$ ,  $\delta_4$ , and  $\delta_5$  should be now chosen properly. We take  $\delta_1 = 2$ ,  $\delta_2 = \delta_3$ ,  $\delta_4 = \delta_5$ , obtaining

$$\begin{aligned}
B_S((\mathbf{u}_h, p_h), (\mathbf{u}_h, p_h)) &\geq 2 \left( 1 - \delta_2 C_{\text{tr}}^2 - \beta C_{\text{in}}^2 \right) \nu \|\boldsymbol{\varepsilon}(\mathbf{u})\|_{0,\Omega}^2 + \left( \gamma_0 - \frac{1}{\delta_2} - \frac{1}{2\delta_4} \right) \nu \langle \mathbf{u}_h, \mathbf{u}_h \rangle_{1/2,h,\Gamma_D} \\
&\quad + \left( \gamma_0 - \frac{1}{\delta_2} - \frac{1}{2\delta_4} \right) \nu \langle \mathbf{u}_h \cdot \mathbf{n}, \mathbf{u}_h \cdot \mathbf{n} \rangle_{1/2,h,\Gamma_S} \\
&\quad + \left( \frac{\beta}{2} - \delta_4 C_{\text{in}}^2 C_{\text{tr}}^2 \right) \sum_{K \in \mathcal{T}_h} \frac{h_K^2}{\nu} \|\nabla p_h\|_{0,K}^2.
\end{aligned}$$

Choosing  $\delta_2 = \frac{\beta}{C_{\text{tr}}^2}$ ,  $\delta_4 = \frac{\beta}{4C_{\text{tr}}^2 C_{\text{in}}^2}$  one gets

$$\gamma_0 - \frac{1}{\delta_2} - \frac{1}{2\delta_4} = \gamma_0 - C_{\text{tr}}^2 \frac{1 + 2C_{\text{in}}^2}{\beta},$$

$$\frac{\beta}{2} - \delta_4 C_{\text{in}}^2 C_{\text{tr}}^2 = \frac{\beta}{4},$$

$$1 - \delta_2 C_{\text{tr}}^2 - \beta C_{\text{in}}^2 = 1 - \beta(C_{\text{tr}}^2 + C_{\text{in}}^2).$$

Hence, taking  $\beta < (C_{\text{tr}}^2 + C_{\text{in}}^2)^{-1}$  and  $\gamma_0 > C_{\text{tr}}^2 \frac{1+2C_{\text{in}}^2}{\beta}$  yields

$$B_S((\mathbf{u}_h, p_h), (\mathbf{u}_h, p_h)) \geq C_S \|(\mathbf{u}_h, p_h)\|_h^2,$$

with

$$C_S := \min \left\{ 2 \left( 1 - \beta(C_{\text{tr}}^2 + C_{\text{in}}^2) \right), \frac{\beta}{4}, \gamma_0 - C_{\text{tr}}^2 \frac{1 + 2C_{\text{in}}^2}{\beta} \right\}. \tag{4.10}$$

The case  $\theta = 1$  is proved using the same arguments as for  $\theta = 0$ .  $\square$

## 5. ERROR ANALYSIS

This section is devoted to a priori error analysis based on the arguments of [5] and [10]. To this purpose, let  $\mathbf{I}_h : \mathbf{H} \rightarrow \mathbf{H}_h$  and  $J_h : Q \rightarrow Q_h$  be the vectorial and scalar version of the Scott–Zhang interpolant, respectively. Then the following results concerning the approximation properties of these operators hold.

**Lemma 5.1.** For each  $K \in \mathcal{T}_h$  and  $k \geq 1$ , there exist two positive constants  $C_{SZ}$  and  $\tilde{C}_{SZ}$ , independent of  $h_K$ , such that

$$\begin{aligned} \|\mathbf{u} - \mathbf{I}_h \mathbf{u}\|_{0,K} + h_K \|\mathbf{u} - \mathbf{I}_h \mathbf{u}\|_{1,K} + h_K^2 \|\mathbf{u} - \mathbf{I}_h \mathbf{u}\|_{2,K} &\leq C_{SZ} h_K^{k+1} |\mathbf{u}|_{k+1, \omega_K} \quad \forall \mathbf{u} \in H^{k+1}(\omega_K)^d, \\ \|q - J_h q\|_{0,K} + h_K \|q - J_h q\|_{1,K} &\leq \tilde{C}_{SZ} h_K^k |q|_{k, \omega_K} \quad \forall q \in H^k(\omega_K), \end{aligned} \quad (5.1)$$

where the patch  $\omega_K$  is defined as

$$\omega_K := \bigcup_{K \cap K' \neq \emptyset} K'.$$

*Proof.* See [35]. □

*Remark.* For a given element  $q \in Q$ , the Scott–Zhang interpolant  $J_h q$  does not belong, in general, to  $Q = L_0^2(\Omega)$ . However, we can consider its modified version given by

$$J_h q - \frac{1}{|\Omega|} \int_{\Omega} J_h q \, dx \in Q.$$

that, with a little abuse of notation, we will also denote as  $J_h q$ . It still satisfies (5.1).

Let us introduce the following notation

$$\begin{aligned} e^{\mathbf{u}_h} &:= \mathbf{I}_h \mathbf{u} - \mathbf{u}_h, & e^{p_h} &:= J_h p - p_h \\ \eta^{\mathbf{u}_h} &:= \mathbf{u} - \mathbf{I}_h \mathbf{u}, & \eta^{p_h} &:= p - J_h p. \end{aligned}$$

Note that

$$\mathbf{u} - \mathbf{u}_h = \eta^{\mathbf{u}_h} + e^{\mathbf{u}_h} \quad \text{and} \quad p - p_h = \eta^{p_h} + e^{p_h}.$$

The following theorem states the convergence of the method.

**Theorem 5.2.** Let  $(\mathbf{u}, p) \in \mathbf{H} \times Q$  and  $(\mathbf{u}_h, p_h) \in \mathbf{H}_h \times Q_h$  be the solutions to Problem (3.1) and Problem (4.1), respectively. Assume that  $(\mathbf{u}, p) \in (H^{k+1}(\Omega)^d \cap \mathbf{H}) \times (H^k(\Omega) \cap Q)$ , with  $k \geq 1$ , then there exists a constant  $C_E > 0$  such that

$$\|(\mathbf{u} - \mathbf{u}_h, p - p_h)\|_h \leq C_E h^k \{|\mathbf{u}|_{k+1, \Omega} + |p|_{k, \Omega}\}. \quad (5.2)$$

*Proof.* For any  $K \in \mathcal{T}_h$  and  $E \subset \partial K$ , we have, as a direct consequence of lemmas 4.3 and 5.1, that

$$\|\varepsilon(\eta^{\mathbf{u}_h})\|_{0,K} \leq C_1 h_K^k |\mathbf{u}|_{k+1, K}, \quad (5.3)$$

$$h_E^{1/2} \|\varepsilon(\eta^{\mathbf{u}_h}) \mathbf{n}\|_{0,E} \leq C_1 h_K^k |\mathbf{u}|_{k+1, K}, \quad (5.4)$$

$$h_E^{-1/2} \|\eta^{\mathbf{u}_h} \cdot \mathbf{n}\|_{0,E} \leq C_1 h_K^k |\mathbf{u}|_{k+1, K}, \quad (5.5)$$

$$\|\nabla \cdot \eta^{\mathbf{u}_h}\|_{0,K} \leq C_1 h_K^k |\mathbf{u}|_{k+1, K}, \quad (5.6)$$

$$h_K \|\nabla \cdot \varepsilon(\eta^{\mathbf{u}_h})\|_{0,K} \leq C_1 h_K^k |\mathbf{u}|_{k+1, K}, \quad (5.7)$$

$$h_K \|\nabla \eta^{p_h}\|_{0,K} \leq C_1 h_K^k |p|_{k, K}, \quad (5.8)$$

for a positive constant  $C_1 > 0$  depending on the constants  $C'_{\text{tr}}$  introduced in Lemma 4.3,  $C_{SZ}$ , and  $\tilde{C}_{SZ}$ .

Now, using Cauchy-Schwarz's inequality and (5.3)–(5.8), we obtain that there exists a constant  $C_2 = C_2(\nu^{\frac{1}{2}}, \theta, \beta, \gamma_0)$  such that

$$\begin{aligned} B_S((\eta^{\mathbf{u}_h}, \eta^{p_h}), (\mathbf{v}_h, q_h)) &:= 2\nu(\varepsilon(\eta^{\mathbf{u}_h}), \varepsilon(\mathbf{v}_h))_{\Omega} - (\nabla \cdot \mathbf{v}_h, \eta^{p_h})_{\Omega} + (\nabla \cdot \eta^{\mathbf{u}_h}, q_h)_{\Omega} \\ &\quad - 2\nu(\varepsilon(\eta^{\mathbf{u}_h}) \mathbf{n}, \mathbf{v}_h)_{\Gamma_D} - 2\theta\nu(\varepsilon(\mathbf{v}_h) \mathbf{n}, \eta^{\mathbf{u}_h})_{\Gamma_D} \\ &\quad + \nu(\gamma_0 \eta^{\mathbf{u}_h}, \mathbf{v}_h)_{1/2, h, \Gamma_D} + \theta(q_h, \eta^{\mathbf{u}_h} \cdot \mathbf{n})_{\Gamma_D} + (\eta^{p_h}, \mathbf{v}_h \cdot \mathbf{n})_{\Gamma_D} \\ &\quad - 2\nu(\varepsilon(\eta^{\mathbf{u}_h}) \mathbf{n} \cdot \mathbf{n}, \mathbf{v}_h \cdot \mathbf{n})_{\Gamma_S} - 2\theta\nu(\varepsilon(\mathbf{v}_h) \mathbf{n} \cdot \mathbf{n}, \eta^{\mathbf{u}_h} \cdot \mathbf{n})_{\Gamma_S} \\ &\quad + \nu(\gamma_0 \eta^{\mathbf{u}_h} \cdot \mathbf{n}, \mathbf{v}_h \cdot \mathbf{n})_{1/2, h, \Gamma_S} + \theta(q_h, \eta^{\mathbf{u}_h} \cdot \mathbf{n})_{\Gamma_S} + (\eta^{p_h}, \mathbf{v}_h \cdot \mathbf{n})_{\Gamma_S} \\ &\quad + \frac{\beta}{\nu} \sum_{K \in \mathcal{T}_h} h_K^2 (-2\nu \nabla \cdot \varepsilon(\eta^{\mathbf{u}_h}) + \nabla \eta^{p_h}, \nabla q_h)_K \\ &\leq C_2 h^k \{|\mathbf{u}|_{k+1, \Omega} + |p|_{k, \Omega}\} \|(\mathbf{v}_h, q_h)\|_h. \end{aligned} \quad (5.9)$$

On the other hand, using again (5.3)–(5.8), and the definition of  $\|\cdot\|_h$ , we have that

$$\|(\eta^{\mathbf{u}_h}, \eta^{\mathbf{u}_h})\|_h^2 = \nu \|\boldsymbol{\varepsilon}(\eta^{\mathbf{u}_h})\|_{0,\Omega}^2 + \sum_{E \in \mathcal{E}_D} \frac{\nu}{h_E} \|\eta^{\mathbf{u}_h}\|_{0,E}^2 + \sum_{E \in \mathcal{E}_S} \frac{\nu}{h_E} \|\eta^{\mathbf{u}_h} \cdot \mathbf{n}\|_{0,E}^2 + \sum_{K \in \mathcal{T}_h} \frac{h_K^2}{\nu} \|\nabla \eta^{\mathbf{u}_h}\|_{0,K}^2 \quad (5.10)$$

which yields

$$\begin{aligned} \|(\eta^{\mathbf{u}_h}, \eta^{\mathbf{u}_h})\|_h &\leq 3\nu^{\frac{1}{2}} C_1 \nu h^k |\mathbf{u}|_{k+1,\Omega} + \nu^{-\frac{1}{2}} C_1 |p|_{k,\Omega} \\ &\leq C_3 h^k \{|\mathbf{u}|_{k+1,\Omega} + |p|_{k,\Omega}\} \end{aligned} \quad (5.11)$$

with  $C_3 = C_1 \max\{3\nu^{\frac{1}{2}}, \nu^{-\frac{1}{2}}\}$ . Thus, from Theorem 4.6, Lemma 4.4 and (5.9), we get

$$\begin{aligned} \|(e^{\mathbf{u}_h}, e^{p_h})\|_h^2 &\leq C_S B_S((e^{\mathbf{u}_h}, e^{p_h}), (e^{\mathbf{u}_h}, e^{p_h})) = -C_S B_S((\eta^{\mathbf{u}_h}, \eta^{p_h}), (e^{\mathbf{u}_h}, e^{p_h})) \\ &\leq C_S C_2 h^k \{|\mathbf{u}|_{k+1,\Omega} + |p|_{k,\Omega}\} \| (e^{\mathbf{u}_h}, e^{p_h}) \|_h. \end{aligned} \quad (5.12)$$

The estimate (5.2) follows using triangle inequality and the bounds (5.11) and (5.12), with  $C_E = C_3 + C_S C_2$ .  $\square$

Concerning the error in the natural norm of the pressure we have the following result.

**Corollary 5.3.** Let assume the hypothesis of Theorem 5.2 are satisfied and let us assume that the family of triangulations  $\{\mathcal{T}_h\}_{h>0}$  is quasi-uniform, then

$$\|p - p_h\|_{0,\Omega} \leq h^k \{|\mathbf{u}|_{k+1,\Omega} + |p|_{k,\Omega}\}.$$

*Proof.* We will follow the arguments of [11, Theorem 1].

Using Theorem 5.2 and the quasi-uniformity assumption we obtain

$$\begin{aligned} &\left( \nu \|\boldsymbol{\varepsilon}(\mathbf{u} - \mathbf{u}_h)\|_{0,\Omega}^2 + \sum_{E \in \mathcal{E}_D} \frac{\nu}{h_E} \|\mathbf{u} - \mathbf{u}_h\|_{0,E}^2 + \sum_{E \in \mathcal{E}_S} \frac{\nu}{h_E} \|\mathbf{u} \cdot \mathbf{n} - \mathbf{u}_h \cdot \mathbf{n}\|_{0,E}^2 + \frac{h^2}{\nu} |p - p_h|_{1,\Omega}^2 \right)^{1/2} \\ &\leq C_E h^k \{|\mathbf{u}|_{k+1,\Omega} + |p|_{k,\Omega}\}. \end{aligned} \quad (5.13)$$

To address the convergence of the pressure, we introduce  $(\mathbf{u}^*, p^*)$  as the solution of the auxiliary problem below:

$$\begin{cases} -\nabla \cdot \boldsymbol{\sigma}(\mathbf{u}^*, p^*) &= \mathbf{0} & \text{in } \Omega, \\ \nabla \cdot \mathbf{u}^* &= p - p_h & \text{in } \Omega, \\ \mathbf{u}^* &= \mathbf{0} & \text{on } \Gamma_D, \\ \mathbf{u}^* \cdot \mathbf{n} &= 0 & \text{on } \Gamma_S \\ \boldsymbol{\sigma}(\mathbf{u}^*, p^*) \mathbf{n} \cdot \mathbf{t}_i &= 0, & 1 \leq i \leq d-1 \quad \text{on } \Gamma_S. \end{cases} \quad (5.14)$$

From the standard theory, it is clear that there exist  $C^* = C^*(\nu) > 0$  such that

$$\|\mathbf{u}^*\|_{1,\Omega} + \|p^*\|_{0,\Omega} \leq C^* \|p - p_h\|_{0,\Omega}. \quad (5.15)$$

Let  $\tilde{\mathbf{I}}_h : \mathbf{H} \rightarrow \mathbf{H}_h \cap H_0^1(\Omega)^d$  be a version of the Scott–Zhang interpolant, let  $\mathbf{w}_h := \tilde{\mathbf{I}}_h \mathbf{u}^*$ , and let  $C_{SZ}^*$  be the maximum between the corresponding stability and approximation constants.

Using (5.14), (2.1), (4.2), and integration by parts we obtain

$$\begin{aligned} \|p - p_h\|_{0,\Omega}^2 &= (p - p_h, \nabla \cdot \mathbf{u}^*) = (p - p_h, \nabla \cdot \mathbf{w}_h) + (p - p_h, \nabla \cdot (\mathbf{u}^* - \mathbf{w}_h)) = \\ &= a(\mathbf{u} - \mathbf{u}_h, \mathbf{w}_h) + 2\theta\nu(\boldsymbol{\varepsilon}(\mathbf{w}_h)\mathbf{n}, \mathbf{u}_h - \mathbf{h})_{\Gamma_D} + 2\theta\nu(\boldsymbol{\varepsilon}(\mathbf{w}_h)\mathbf{n} \cdot \mathbf{n}, \mathbf{u}_h \cdot \mathbf{n} - g)_{\Gamma_S} \\ &\quad - (\nabla(p - p_h), \mathbf{u}^* - \mathbf{w}_h). \end{aligned} \quad (5.16)$$



Next, using the quasi-uniformity of the mesh family and the stability and approximation properties of the Scott-Zhang interpolant allow to obtain

$$\begin{aligned}
& \|p - p_h\|_{0,\Omega}^2 \\
& \leq \nu \|\boldsymbol{\varepsilon}(\mathbf{u} - \mathbf{u}_h)\|_{0,\Omega} \|\boldsymbol{\varepsilon}(\mathbf{w}_h)\|_{0,\Omega} \\
& \quad + 2\nu^{\frac{1}{2}}\theta \sum_{E \in \mathcal{E}_D} h_E^{\frac{1}{2}} \|\boldsymbol{\varepsilon}(\mathbf{w}_h)\|_{0,E} \left( \frac{\nu^{\frac{1}{2}}}{h_E^{\frac{1}{2}}} \|\mathbf{u} - \mathbf{u}_h\|_{0,E} \right) \\
& \quad + 2\nu^{\frac{1}{2}}\theta \sum_{E \in \mathcal{E}_S} h_E^{\frac{1}{2}} \|\boldsymbol{\varepsilon}(\mathbf{w}_h)\|_{0,E} \left( \frac{\nu^{\frac{1}{2}}}{h_E^{\frac{1}{2}}} \|\mathbf{u} \cdot \mathbf{n} - \mathbf{u}_h \cdot \mathbf{n}\|_{0,E} \right) \\
& \quad + C_{SZ}^* h \|p - p_h\|_{1,\Omega} \|\mathbf{u}^*\|_{1,\Omega} \\
& \leq C_P \left( \nu \|\boldsymbol{\varepsilon}(\mathbf{u} - \mathbf{u}_h)\|_{0,\Omega}^2 + \sum_{E \in \mathcal{E}_D} \frac{\nu}{h_E} \|\mathbf{u} - \mathbf{u}_h\|_{0,E}^2 + \sum_{E \in \mathcal{E}_S} \frac{\nu}{h_E} \|\mathbf{u} \cdot \mathbf{n} - \mathbf{u}_h \cdot \mathbf{n}\|_{0,E}^2 + \frac{h^2}{\nu} \|p - p_h\|_{1,\Omega}^2 \right)^{\frac{1}{2}} \|\mathbf{u}^*\|_{1,\Omega},
\end{aligned} \tag{5.17}$$

with  $C_P = \nu^{\frac{1}{2}} C_{SZ}^* (1 + 4\theta)$ . The results follows using Lemma 4.1, (5.13), and (5.15):

$$\|p - p_h\|_{0,\Omega}^2 \leq C_P C_E C^* h^k \{|\mathbf{u}|_{k+1,\Omega} + |p|_{k,\Omega}\} \|p - p_h\|_{0,\Omega}. \tag{5.18}$$

□

## 6. NUMERICAL EXPERIMENTS

Numerical experiments are carried out with FEniCS finite element software [32], and the scripts are available online [2].

**6.1. Example 1: 2D Cavity.** The value of  $s_1$  is calculated from the explicit solution and also a nonhomogeneous Dirichlet boundary condition is used. In this example, taken from [37], we take  $\Omega := (-1, 1)^2$  and the slip boundary condition is imposed on  $y = -1$ , while a Dirichlet boundary condition is enforced on the rest of the boundary. The exact solution of this problem is given by  $\mathbf{u} := (2y(1-x^2), -2x(1-y^2))$  and  $p := 0$ . For our computations we use  $\mathbb{P}_1$  for all the variables, while the viscosity is set to  $\nu = 1$ . The corresponding computed velocity field is depicted Figure 1. Table 1 presents the approximation errors for pressure and velocity as well as the computed convergence rate, which are in good agreement with the theory, with a slight superconvergence for the pressure. Table 2 presents the error in  $L^2$  norm on the slip condition on  $\Gamma_S$ , that, for this situation, does not differ significantly between the symmetric and skew-symmetric variants. However, it shows that the larger the Nitsche parameter  $\gamma_0$  is, the smaller is the error on the slip condition, for both variants.

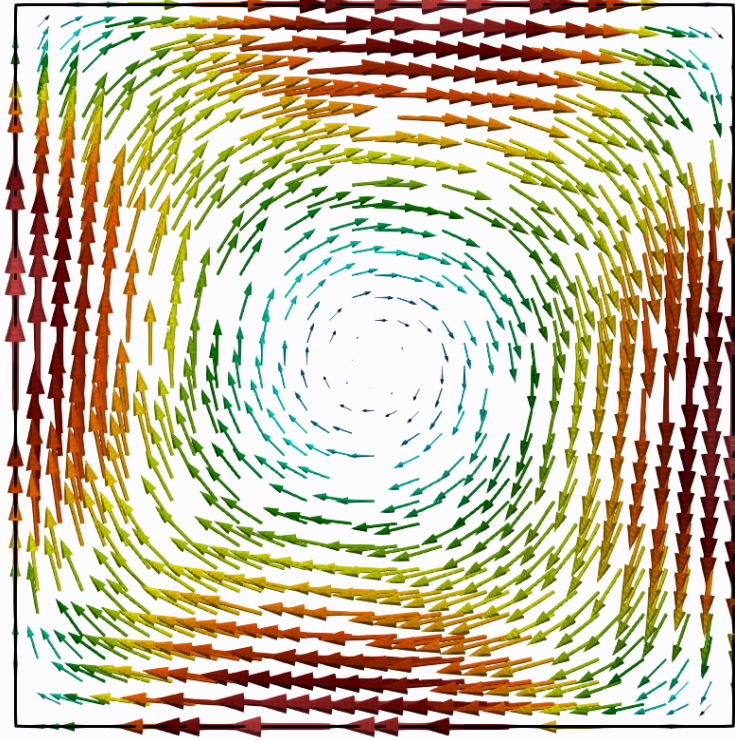


FIGURE 1. The computed velocity field for Example 1.

$h$	$\ p - p_h\ _{0,\Omega}$	order	$\ \mathbf{u} - \mathbf{u}_h\ _{0,\Omega}$	order	$\ \mathbf{u} - \mathbf{u}_h\ _{1,\Omega}$	order
0.353553	0.256600	—	0.055039	—	1.058715	—
0.176777	0.110749	1.21	0.017263	1.67	0.538051	0.97
0.088388	0.040998	1.43	0.004827	1.83	0.270114	0.99
0.044194	0.014566	1.49	0.001276	1.91	0.135161	0.99
0.022097	0.005134	1.50	0.000328	1.96	0.067574	1.00

TABLE 1. Approximation errors and convergence orders for each variable.

$h$	$\theta = -1$			$\theta = 1$		
	$\gamma_0 = 10^{-3}$	$\gamma_0 = 1$	$\gamma_0 = 10^3$	$\gamma_0 = 10^{-3}$	$\gamma_0 = 1$	$\gamma_0 = 10^3$
0.353553	0.233603	0.187756	0.001221	0.182408	0.158295	0.001222
0.176777	0.043670	0.035254	0.000250	0.039551	0.032317	0.000250
0.088388	0.008092	0.006591	0.000050	0.007483	0.006229	0.000050
0.044194	0.001524	0.001257	0.000010	0.001419	0.001235	0.000010
0.022097	0.000297	0.000250	0.000002	0.000280	0.000256	0.000002

TABLE 2. Computations of  $\|\mathbf{u}_h \cdot \mathbf{n}\|_{0,\Gamma_S}$  for different values of  $\theta$  and  $\gamma_0$ .

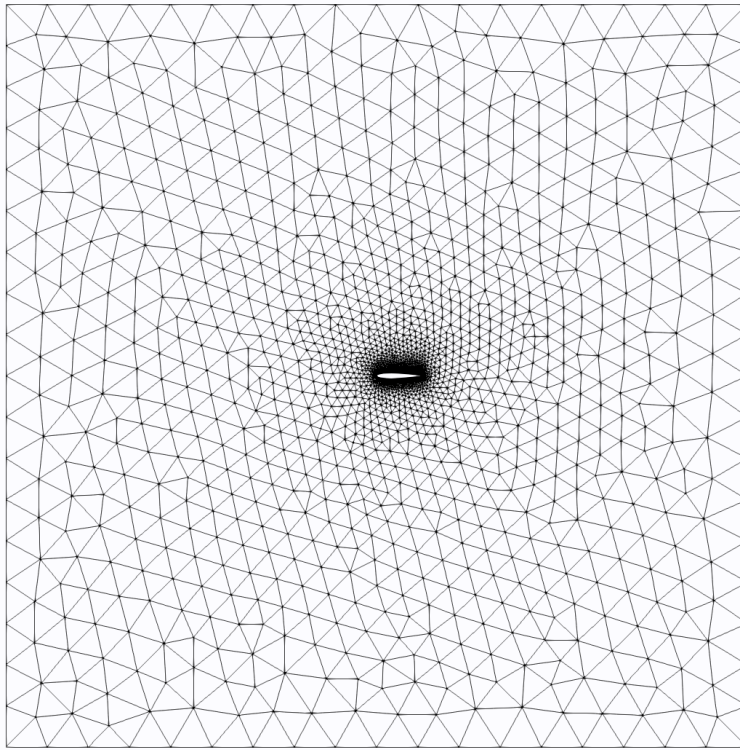


FIGURE 2. Computational mesh used for the Naca problem.

**6.2. Example 2: 2D Naca 0012.** In this case we use the standard Naca 0012 configuration depicted in Figure 2. The boundary conditions are  $\mathbf{u} = (51.4814, 0)$  on all the box boundaries and  $\mathbf{u} \cdot \mathbf{n} = 0$  and  $\sigma(\mathbf{u}, p)\mathbf{n} \cdot \mathbf{t} = 0$  on the surface of the Naca domain. We use a mesh with 8,808 elements with polynomials of order 1, and we set  $\theta = -1$ ,  $\gamma_0 = 10$ . The predicted pressure and velocity are depicted Figure 3 and Figure 4, which show the method behaves as expected on this classical example, notably for the enforcement on the slip condition on the wing.

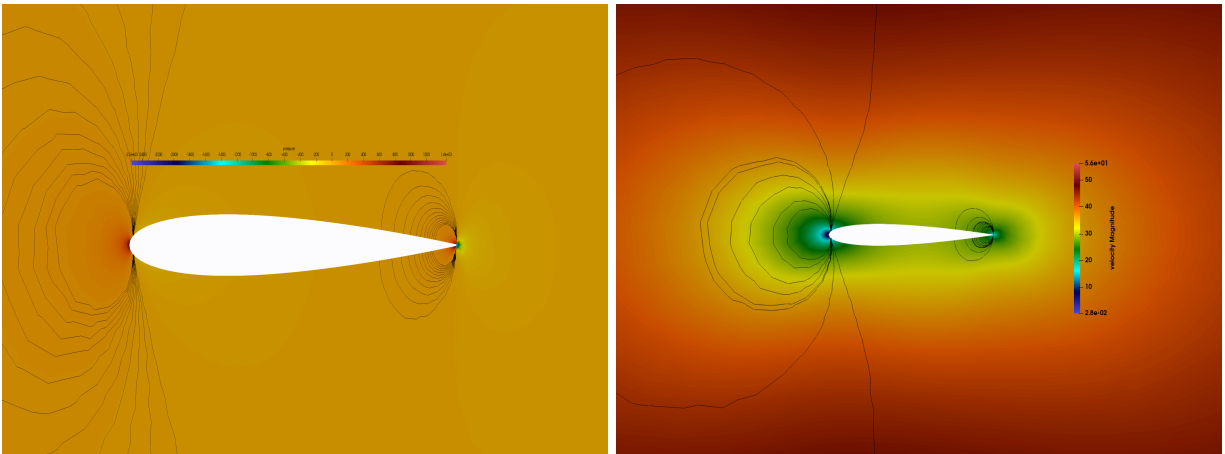


FIGURE 3. Isovalues of the pressure (left) and velocity magnitude (right).

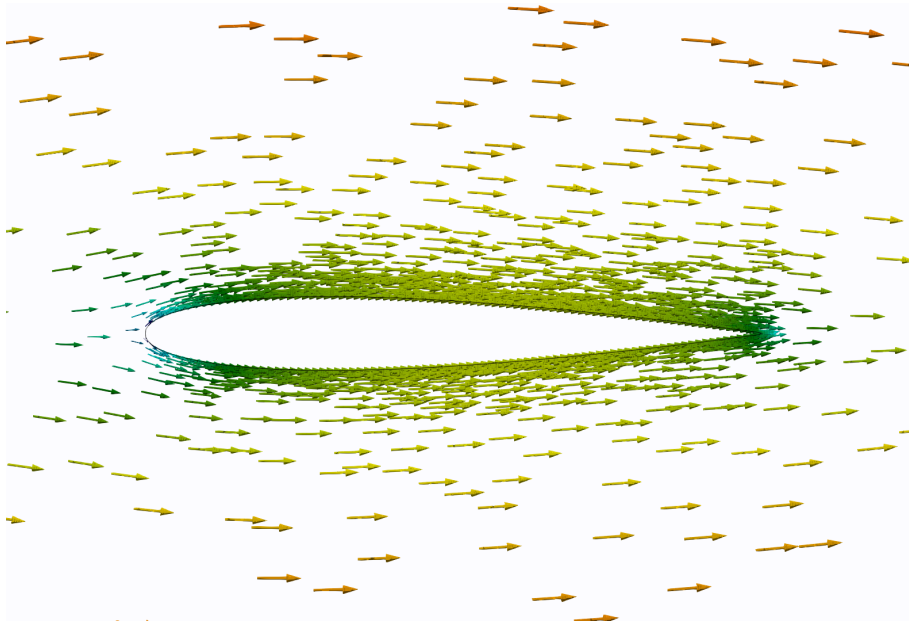


FIGURE 4. Zoom, close to the Naca wing, of the velocity field.

**6.3. Example 3: 3D Cylinder.** The last example is based on a standard three-dimensional CFD benchmark: the cylinder problem. The geometrical settings of the domain are given in Figure 5.

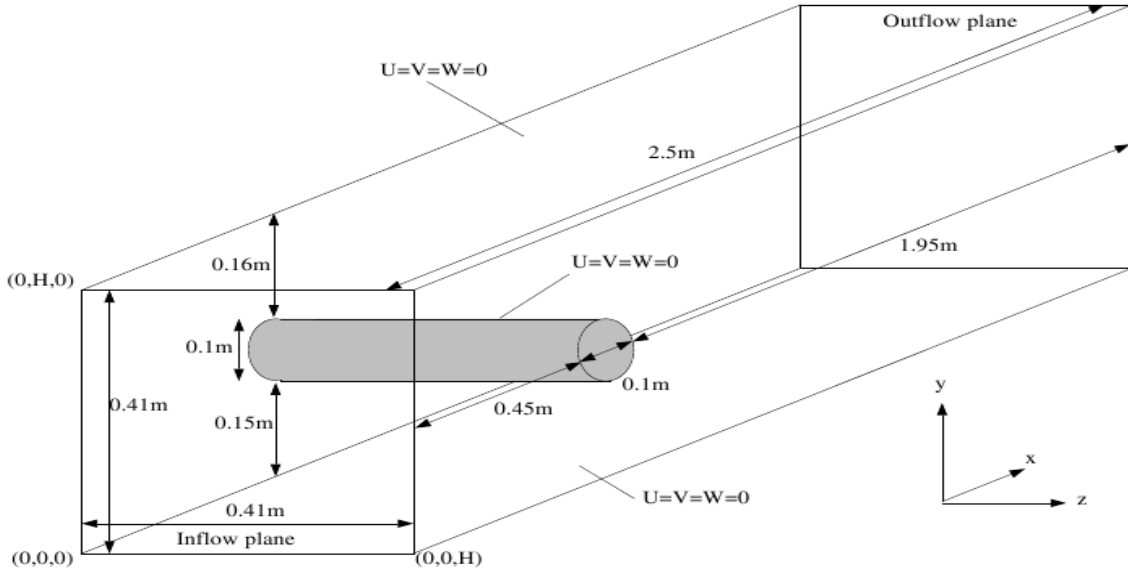


FIGURE 5. Cylinder problem. Domain and boundary conditions.

In this case  $H = 0.41 \text{ m}$ , no-slip boundary conditions are imposed on all the lateral walls of the box, while do-nothing boundary conditions are imposed at the outflow plane. On the surface of the cylinder we impose the conditions  $\mathbf{u} \cdot \mathbf{n} = 0$  and  $\sum_{i=1}^2 \sigma(\mathbf{u}, p) \mathbf{n} \cdot \mathbf{t}_i = 0$ . Finally, the inflow condition is given by

$$\mathbf{u}_D := \left( \frac{16 U_m y z (H - y)(H - z)}{H^4}, 0, 0 \right)^T,$$

with  $U_m := 0.45 \text{ m/s}$ . We use the viscosity  $\nu := 10^{-3} \text{ m}^2/\text{s}$ . The mesh is depicted Figure 6 and we set  $\theta = -1$ ,  $\gamma_0 = 10$ . The numerical solutions for the pressure and velocity fields are shown in Figure 7, Figure 8,

Figure 9 and Figure 10. The results illustrate the good behavior of the method also on this more complex example.

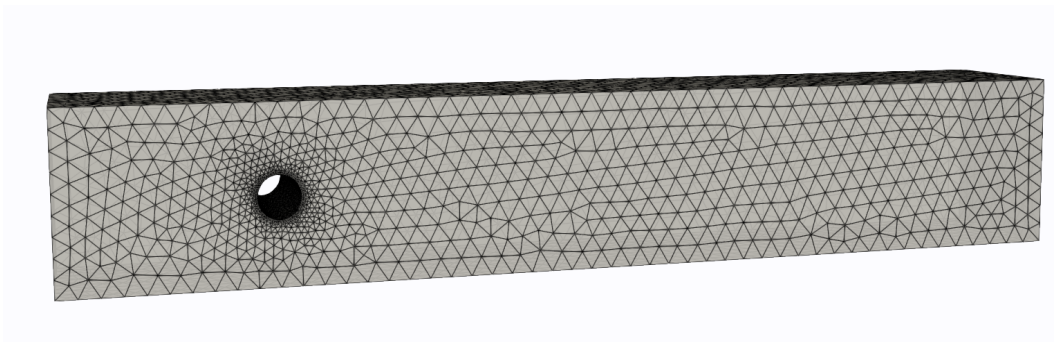


FIGURE 6. Cylinder problem. Surface view of the computational mesh.

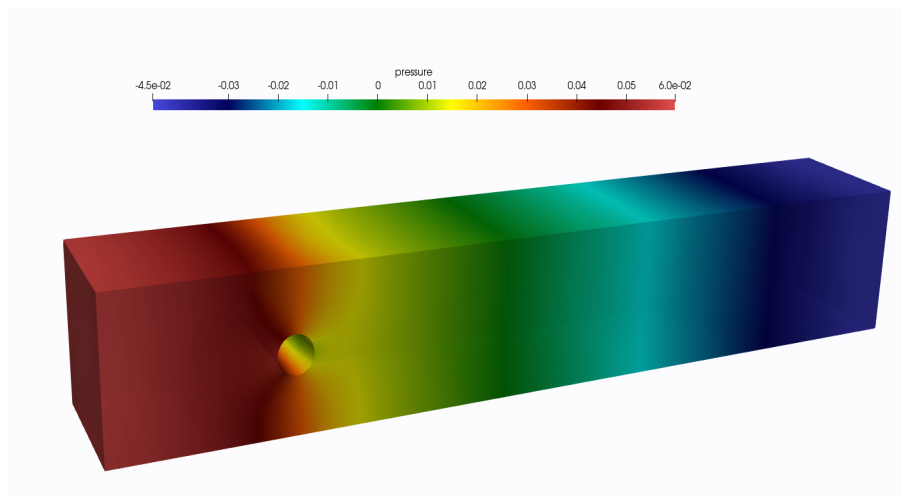


FIGURE 7. Cylinder problem. Isovalues of the pressure.

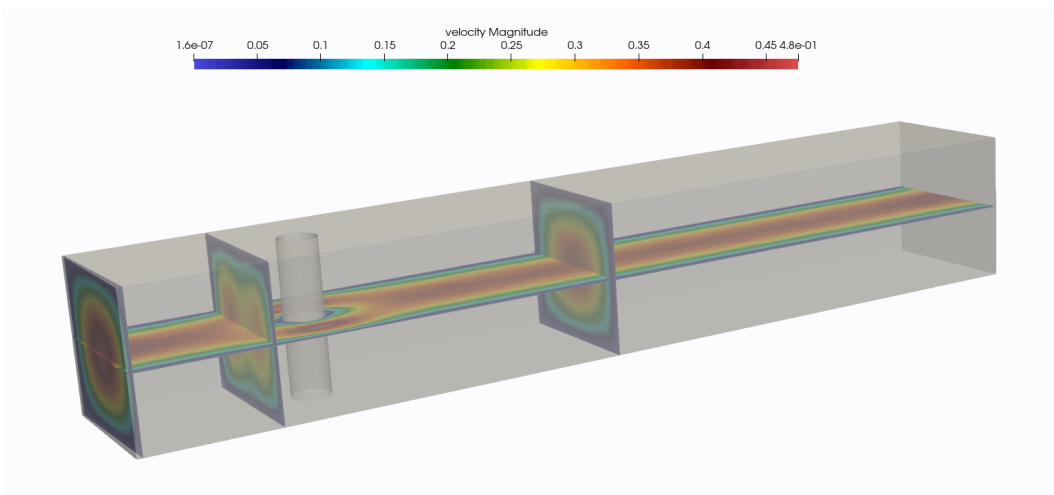


FIGURE 8. Cylinder problem. Velocity magnitude (top view).

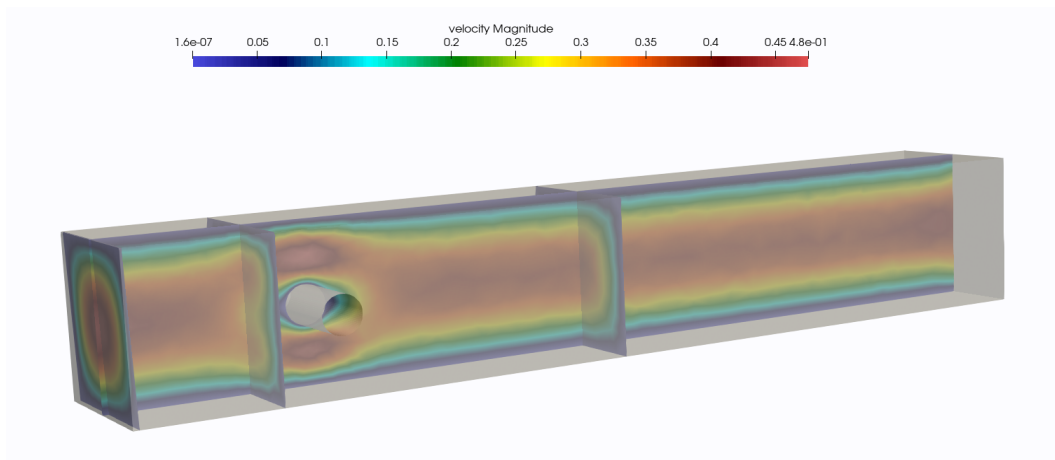


FIGURE 9. Cylinder problem. Velocity magnitude (side view).

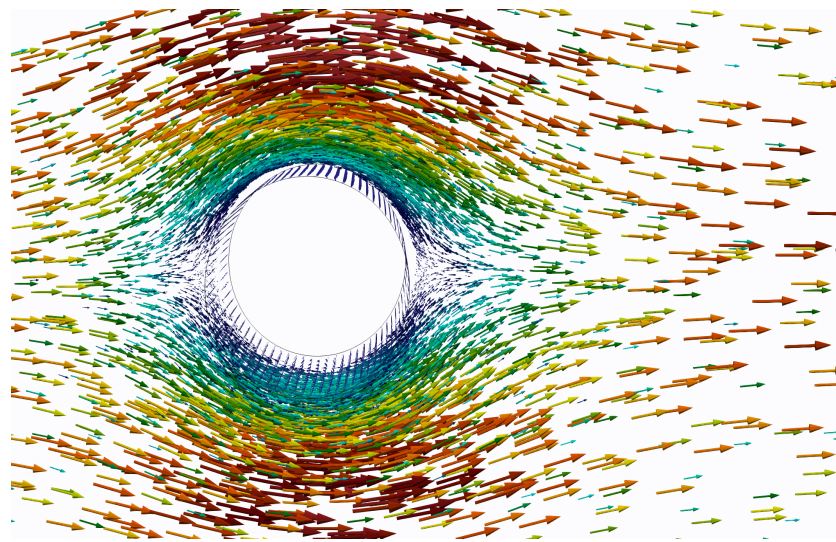


FIGURE 10. Cylinder problem. Zoom of the velocity field (velocity vectors at a selection of points) close to the cylinder. The length and the color of the vector is scaled according to velocity magnitude (see the legend in Figure 9).

#### ACKNOWLEDGEMENTS

R.A. was partially supported by ANID-Chile through the projects: Centro de Modelamiento Matemático (FB210005) of the PIA Program: Concurso Apoyo a Centros Científicos y Tecnológicos de Excelencia con Financiamiento Basal, and Fondecyt Regular No 1211649. FC is grateful of the Center for Mathematical Modeling grant FB20005.

#### REFERENCES

1. M. Alnæs, J. Blechta, J. Hake, A. Johansson, B. Kehlet, A. Logg, C. Richardson, J. Ring, M. E. Rognes, and G. N. Wells, *The FEniCS project version 1.5*, Archive of Numerical Software **3** (2015), no. 100, 9–23.
2. R. Araya, A. Caiazzo, and F. Chouly, *Nitsche method for Stokes with slip boundary conditions in FEniCS*, (2023), DOI:10.6084/m9.figshare.22779443.v1.
3. A. Bansal, N. A. Barnafi, and D. N. Pandey, *Nitsche method for Navier-Stokes equations with slip boundary conditions: convergence analysis and VMS-LES stabilization*, 2023, arXiv eprint 2307.03589.
4. E. Bänsch and K. Deckelnick, *Optimal error estimates for the Stokes and Navier-Stokes equations with slip-boundary condition*, M2AN Math. Model. Numer. Anal. **33** (1999), no. 5, 923–938.
5. G. R. Barrenechea and F. Valentin, *An unusual stabilized finite element method for a generalized Stokes problem*, Numer. Math. **92** (2002), no. 4, 653–677.

6. D. W. Bechert, M. Bruse, W. Hage, and R. Meyer, *Fluid mechanics of biological surfaces and their technological application*, *Naturwissenschaften* **87** (2000), 157–171.
7. R. Becker, E. Burman, and P. Hansbo, *A Nitsche extended finite element method for incompressible elasticity with discontinuous modulus of elasticity*, *Comput. Methods Appl. Mech. Eng.* **198** (2009), no. 41-44, 3352–3360 (English).
8. H. Beirão da Veiga, *Regularity for Stokes and generalized Stokes systems under nonhomogeneous slip-type boundary conditions*, *Adv. Differential Equations* **9** (2004), no. 9-10, 1079–1114.
9. L. Blank, A. Caiazzo, F. Chouly, A. Lozinski, and J. Mura, *Analysis of a stabilized penalty-free Nitsche method for the Brinkman, Stokes, and Darcy problems*, *ESAIM Math. Model. Numer. Anal.* **52** (2018), no. 6, 2149–2185.
10. T. Boiveau and E. Burman, *A penalty-free Nitsche method for the weak imposition of boundary conditions in compressible and incompressible elasticity*, *IMA J. Numer. Anal.* **36** (2016), no. 2, 770–795.
11. F. Brezzi and J. Douglas, *Stabilized mixed methods for the Stokes problem*, *Numer. Math.* **53** (1988), no. 1-2, 225–235.
12. E. Burman, *A penalty-free nonsymmetric Nitsche-type method for the weak imposition of boundary conditions*, *SIAM J. Numer. Anal.* **50** (2012), no. 4, 1959–1981.
13. E. Burman, P. Hansbo, and M.G. Larson, *The augmented Lagrangian method as a framework for stabilised methods in computational mechanics*, *Arch. Computat. Methods. Eng.* **30** (2023), 2579–2604.
14. A. Caglar and A. Liakos, *Weak imposition of boundary conditions for the Navier-Stokes equations by a penalty method*, *Internat. J. Numer. Methods Fluids* **61** (2009), no. 4, 411–431.
15. F. Chouly, *A review on some discrete variational techniques for the approximation of essential boundary conditions*, Preprint hal-03741809, August 2022.
16. K. N. Christodoulou and L. E. Scriven, *The fluid mechanics of slide coating*, *J. Fluid Mech.* **208** (1989), 321–354.
17. D. A. Di Pietro and A. Ern, *Mathematical aspects of discontinuous Galerkin methods*, *Mathématiques & Applications (Berlin) [Mathematics & Applications]*, vol. 69, Springer, Heidelberg, 2012. MR 2882148
18. I. Dione, C. Tibirna, and J. M. Urquiza, *Stokes equations with penalised slip boundary conditions*, *Int. J. Comput. Fluid Dyn.* **27** (2013), no. 6-7, 283–296.
19. I. Dione and J. M. Urquiza, *Penalty: finite element approximation of Stokes equations with slip boundary conditions*, *Numer. Math.* **129** (2015), no. 3, 587–610.
20. A. Ern and J.-L. Guermond, *Finite elements I. Approximation and interpolation*, 1 ed., *Texts in Applied Mathematics*, vol. 72, Springer Nature, Cham, 2021.
21. A. Ern and J.-L. Guermond, *Finite elements II—Galerkin approximation, elliptic and mixed PDEs*, *Texts in Applied Mathematics*, vol. 73, Springer, Cham, 2021.
22. J. Freund and R. Stenberg, *On weakly imposed boundary conditions for second order problems*, *Proceedings of the Ninth International Conference on Finite Elements in Fluids*, Venice, 1995, pp. 327–336.
23. I. G. Gjerde and L. R. Scott, *Nitsche’s method for Navier-Stokes equations with slip boundary conditions*, *Math. Comp.* **91** (2022), no. 334, 597–622.
24. T. Gustafsson and J. Videman, *Stabilised finite element method for Stokes problem with nonlinear slip condition*, 2023, arXiv eprint 2308.15182.
25. S. K. Harouna and V. Perrier, *No-slip and free-slip divergence-free wavelets for the simulation of incompressible viscous flows*, *Cartesian CFD methods for complex applications*. Selected papers based on the presentations of the mini-symposium at ICIAM 2019, Valencia, Spain, July 14–19, 2019, Cham: Springer, 2021, pp. 37–65.
26. Q. Hu, F. Chouly, P. Hu, G. Cheng, and S. P. A. Bordas, *Skew-symmetric Nitsche’s formulation in isogeometric analysis: Dirichlet and symmetry conditions, patch coupling and frictionless contact*, *Comput. Methods Appl. Mech. Engrg.* **341** (2018), 188–220.
27. V. John, *Slip with friction and penetration with resistance boundary conditions for the Navier-Stokes equations—numerical tests and aspects of the implementation*, *J. Comput. Appl. Math.* **147** (2002), no. 2, 287–300.
28. M. Juntunen and R. Stenberg, *Nitsche’s method for general boundary conditions*, *Math. Comp.* **78** (2009), no. 267, 1353–1374.
29. T. Kashiwabara, I. Oikawa, and G. Zhou, *Penalty method with P1/P1 finite element approximation for the Stokes equations under the slip boundary condition*, *Numer. Math.* **134** (2016), no. 4, 705–740.
30. ———, *Penalty method with Crouzeix-Raviart approximation for the Stokes equations under slip boundary condition*, *ESAIM Math. Model. Numer. Anal.* **53** (2019), no. 3, 869–891.
31. W. Layton, *Weak imposition of “no-slip” conditions in finite element methods*, *Comput. Math. Appl.* **38** (1999), no. 5-6, 129–142.
32. A. Logg, K.-A. Mardal, and G. N. Wells (eds.), *Automated solution of differential equations by the finite element method*, *Lecture Notes in Computational Science and Engineering*, vol. 84, Springer, Heidelberg, 2012.
33. B. Mohammadi and O. Pironneau, *Analysis of the k-epsilon turbulence model*, *RAM: Research in Applied Mathematics*, Masson, Paris; John Wiley & Sons, Ltd., Chichester, 1994.
34. J. Nitsche, *Über ein Variationsprinzip zur Lösung von Dirichlet-Problemen bei Verwendung von Teilräumen, die keinen Randbedingungen unterworfen sind*, *Abh. Math. Sem. Univ. Hamburg* **36** (1971), 9–15.
35. L. R. Scott and S. Zhang, *Finite element interpolation of nonsmooth functions satisfying boundary conditions*, *Math. Comp.* **54** (1990), no. 190, 483–493.
36. R. Stenberg, *On some techniques for approximating boundary conditions in the finite element method*, *J. Comput. Appl. Math.* **63** (1995), no. 1-3, 139–148.
37. J. M. Urquiza, A. Garon, and M.-I. Farinas, *Weak imposition of the slip boundary condition on curved boundaries for Stokes flow*, *J. Comput. Phys.* **256** (2014), 748–767.
38. R. Verfürth, *Finite element approximation of incompressible Navier-Stokes equations with slip boundary condition*, *Numer. Math.* **50** (1987), no. 6, 697–721.
39. ———, *Finite element approximation of incompressible Navier-Stokes equations with slip boundary condition. II*, *Numer. Math.* **59** (1991), no. 6, 615–636.

40. M. Winter, B. Schott, A. Massing, and W. A. Wall, *A Nitsche cut finite element method for the Oseen problem with general Navier boundary conditions*, *Comput. Methods Appl. Mech. Engrg.* **330** (2018), 220–252.
41. G. Zhou, T. Kashiwabara, and I. Oikawa, *Penalty method for the stationary Navier-Stokes problems under the slip boundary condition*, *J. Sci. Comput.* **68** (2016), no. 1, 339–374.
42. ———, *A penalty method for the time-dependent Stokes problem with the slip boundary condition and its finite element approximation*, *Appl. Math.* **62** (2017), no. 4, 377–403.
43. G. Zhou, I. Oikawa, and T. Kashiwabara, *The Crouzeix-Raviart element for the Stokes equations with the slip boundary condition on a curved boundary*, *J. Comput. Appl. Math.* **383** (2021), 113123.
44. R. Zorrilla, A. Larese de Tetto, and R. Rossi, *A discontinuous Nitsche-based finite element formulation for the imposition of the Navier-slip condition over embedded volumeless geometries*, *Internat. J. Numer. Methods Fluids* **93** (2021), no. 9, 2968–3003.

DEPARTAMENTO DE INGENIERÍA MATEMÁTICA & CI2MA, UNIVERSIDAD DE CONCEPCIÓN, CONCEPCIÓN, CHILE  
Email address: [rodolfo.araya@udec.cl](mailto:rodolfo.araya@udec.cl)

WEIERSTRASS INSTITUTE FOR APPLIED ANALYSIS AND STOCHASTICS (WIAS), MOHRENSTRASSE 39, 10117 BERLIN, GERMANY  
Email address: [alfonso.caiazzo@wias-berlin.de](mailto:alfonso.caiazzo@wias-berlin.de)

UNIVERSITY OF THE REPUBLIC, FACULTY OF SCIENCE, CENTER OF MATHEMATICS, 11400 MONTEVIDEO, URUGUAY  
Email address: [fchouly@cmat.edu.uy](mailto:fchouly@cmat.edu.uy)