



**HAL**  
open science

## How does the European catfish *Silurus glanis* behave under an hypoxic stress ?

Samuel Westrelin, Stéphanie Boulêtreau, Frédéric Santoul

► **To cite this version:**

Samuel Westrelin, Stéphanie Boulêtreau, Frédéric Santoul. How does the European catfish *Silurus glanis* behave under an hypoxic stress?. FSBI Symposium, Jul 2021, KU Leuven, Belgium. hal-04077397

**HAL Id: hal-04077397**

**<https://hal.science/hal-04077397v1>**

Submitted on 21 Apr 2023

**HAL** is a multi-disciplinary open access archive for the deposit and dissemination of scientific research documents, whether they are published or not. The documents may come from teaching and research institutions in France or abroad, or from public or private research centers.

L'archive ouverte pluridisciplinaire **HAL**, est destinée au dépôt et à la diffusion de documents scientifiques de niveau recherche, publiés ou non, émanant des établissements d'enseignement et de recherche français ou étrangers, des laboratoires publics ou privés.

➤ How does the European catfish *Silurus glanis* behave under an hypoxic stress ?

Samuel Westrelin  
Stéphanie Boulêtreau  
Frédéric Santoul

[samuel.westrelin@inrae.fr](mailto:samuel.westrelin@inrae.fr)

FSBI Symposium – 5-8 July 2021 – Virtual conference

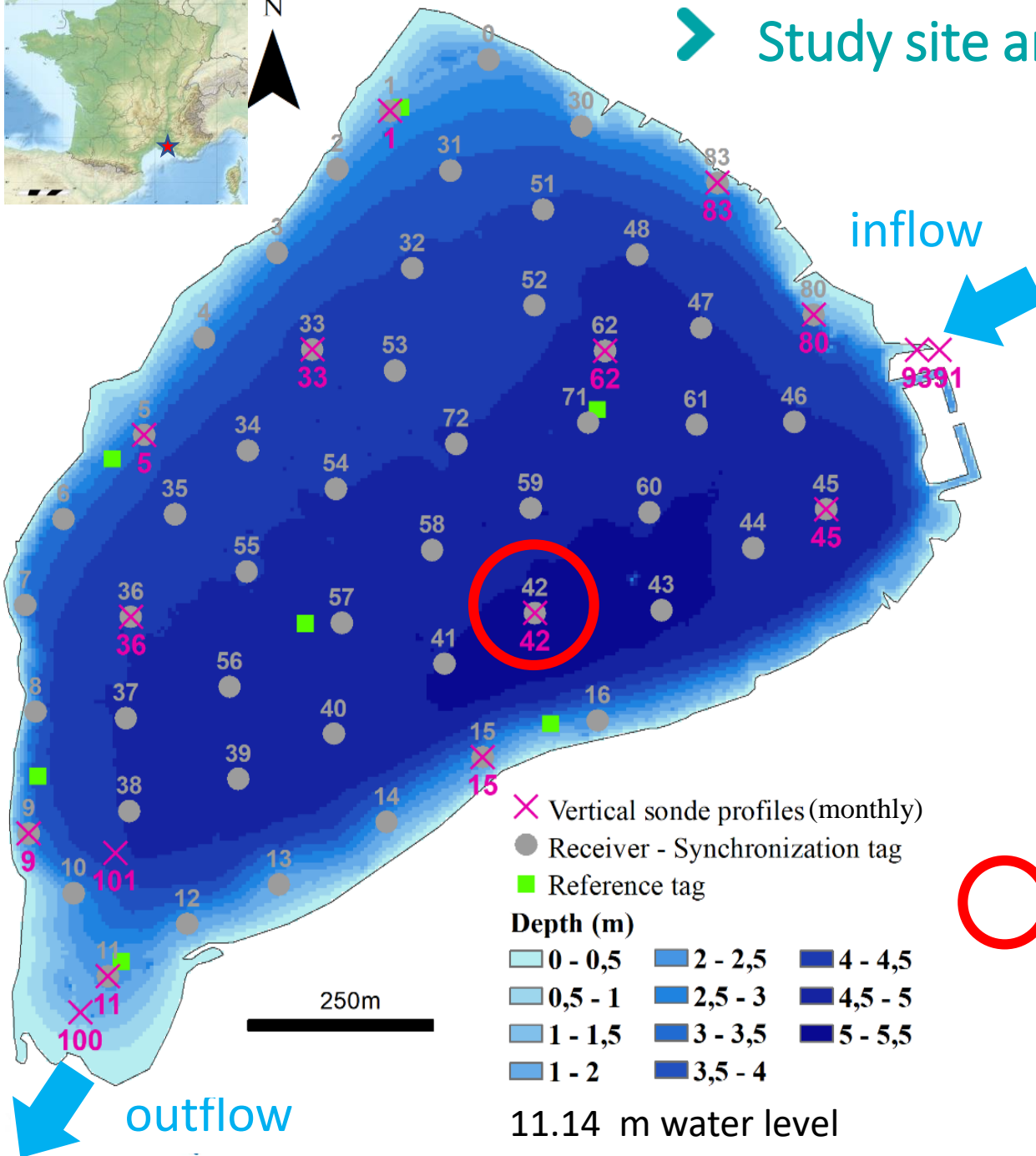
## ➤ Context

- Increase of low dissolved oxygen events in freshwater ecosystems with human activities (*Domenici et al, 2017*)
- $[O_2]$  can drop below suitable physiological thresholds (**hypoxia**)
- European catfish is known to have low oxygen requirements (*Massabuau and Forgue 1995*).
- We tracked 40 European catfish during a summer hypoxic event

## ➤ Questions

- Did hypoxia lead to changes in spontaneous swimming activity (*Danek et al. 2014*) ?
- Which were the individual responses to hypoxic stress ?

# Study site and experimental setup



**Aulnes pond**

- 90 ha
- mean depth 3.8m
- max depth 6m



○ T, O<sub>2</sub> hourly vertical profile

# ➤ Fish tracking

## ➤ 40 tagged catfish

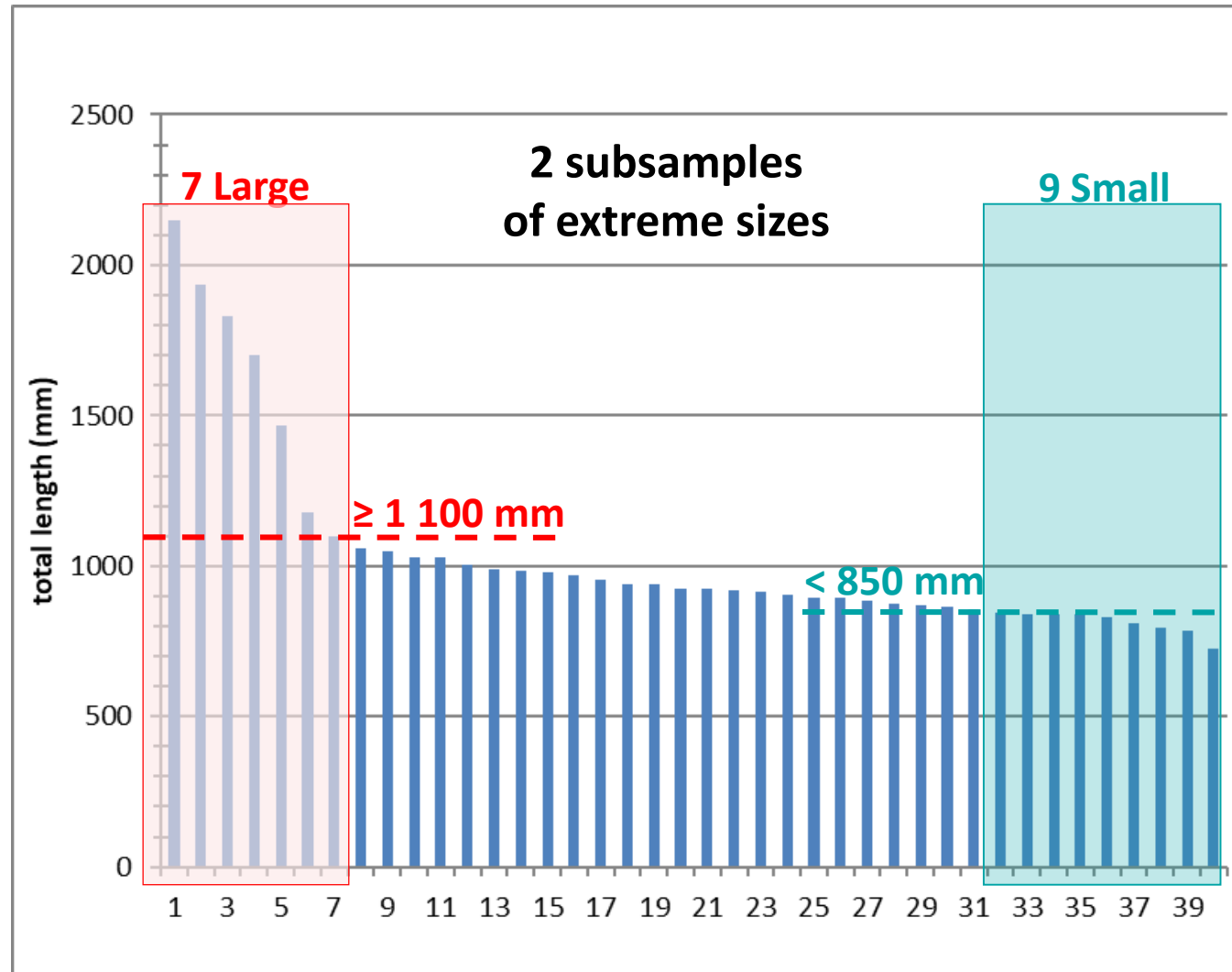
- ✓ mean size: 1 033 mm [727; 2 150] mm
- ✓ mean weight: 9 658 g [2 301; 64 380] g



Tags 36mm, 11g

Emission every 5 min

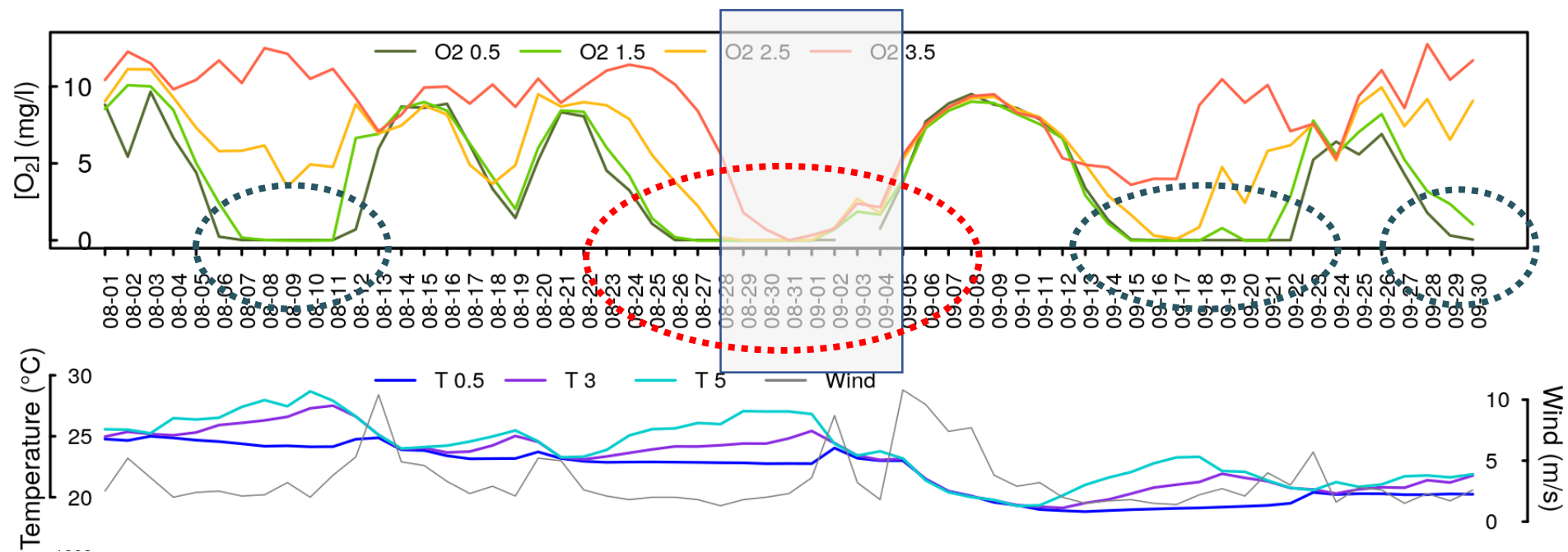
Lifespan ~5 years

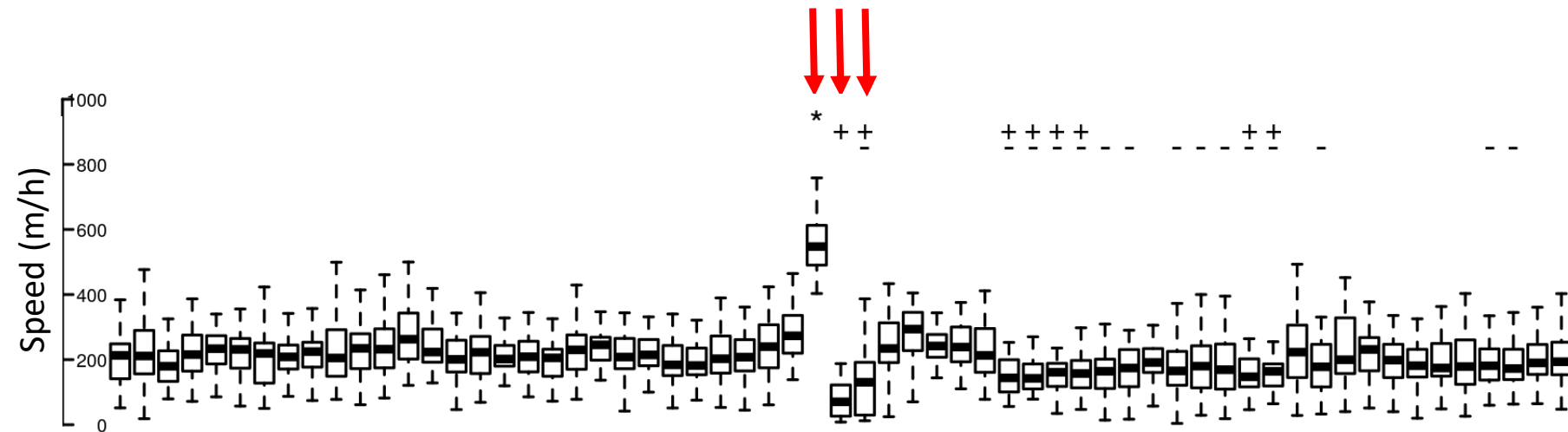
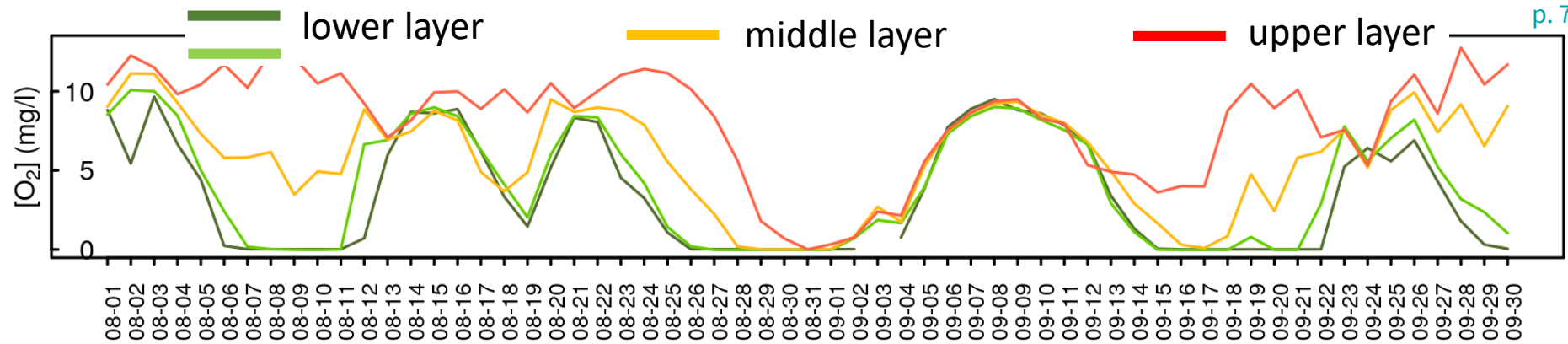


# ➤ [O<sub>2</sub>] time series

## August – September 2019

— lower layer      — middle layer      — upper layer

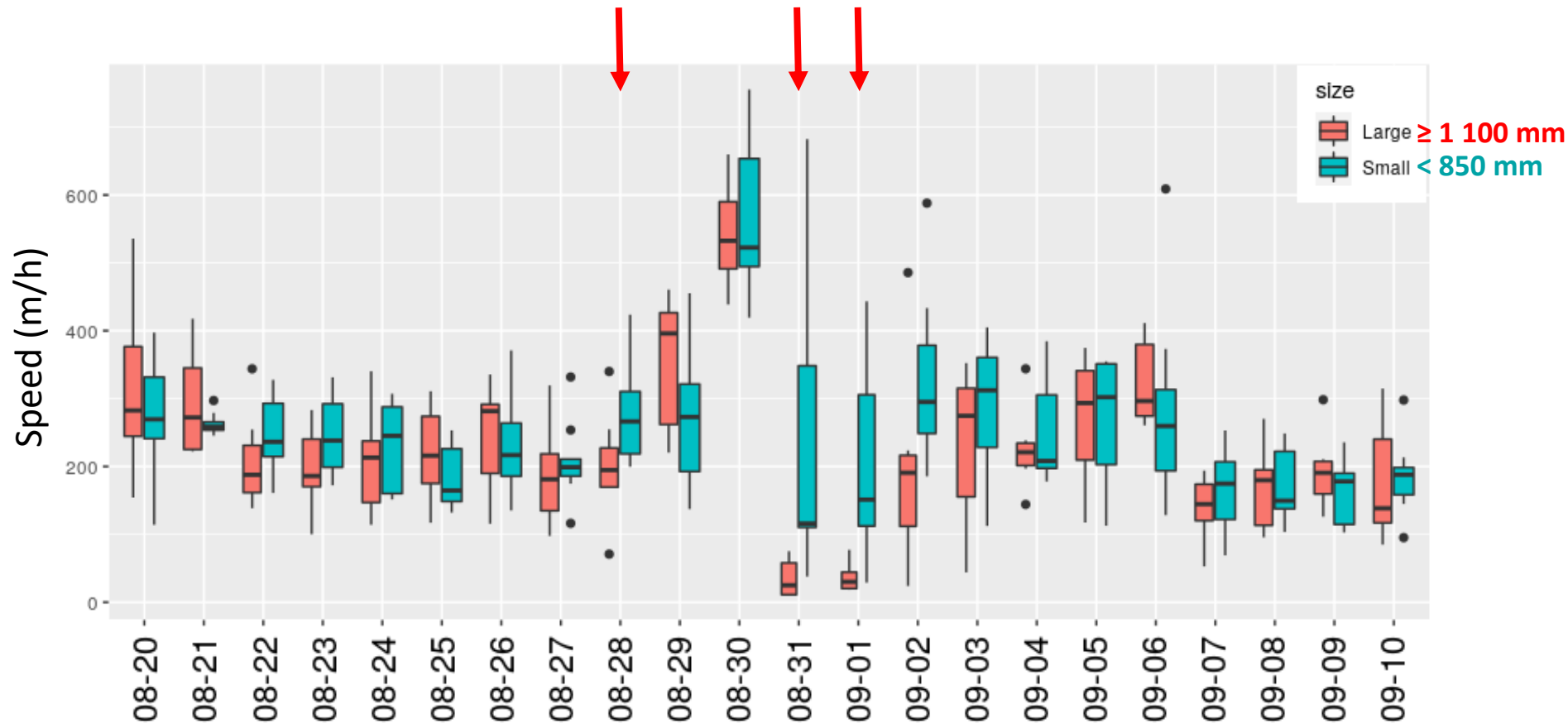




- Only comparisons involving 30<sup>th</sup>, 31<sup>st</sup> August, 1<sup>st</sup> Sept
- On 30<sup>th</sup>, when anoxia was extending to surface layer, activity was the highest
- On 31<sup>st</sup> and 1<sup>st</sup>, when anoxia was global, activity was the lowest (but not different from some other days in Sept.).



## ➤ Daily activity comparisons of Large vs Small



- On 28<sup>th</sup>, 31<sup>st</sup> and 1<sup>st</sup>, Large were less active than Small
- No differences on 30<sup>th</sup>

## ➤ Discussion / Conclusions

- Catfish could go through very low oxygen conditions
- Movements impacted only when the  $[O_2]$  in the upper layer went below 2-2.4 mg/L (*as Danek et al, 2014*)
- Increased activity when hypoxia was worsening
  - ✓ Avoidance response that helped to find a more suitable place ? (*Domenici 2000, herbert 2006, Chapman 2009*)
- Found a more suitable place, probably the most oxygenated available in the lake, and stayed there during the anoxia
- Large even less active than Small during the anoxia

## ➤ Remaining questions

- How do catfish manage with anoxia of the lower half of the water column ?
- How it can happen that all fish converge in a short time interval towards the same place ?
  - ? Did they map the lake (*Braithwaite and de Perera 2006*) and know where to refuge ?
- How to explain the differential behavior of Small vs Large during the anoxia ?



Thank you for your attention !

## ➤ Acknowledgments

Virginie Diouloufet, Julien Dublon, Dorian Milesi, Ange Molina (*INRAE*)

Mailove Benoliel, Yann Le Coarer, Tiphaine Peroux, Nathalie Reynaud, Marine Taubaty, Léa Voisin, ... (*INRAE*)

Stéphanie Bertrand, Lionel Allegre, Dominique Ghione (*Département des Bouches-du-Rhône*)

Département des Bouches-du-Rhône for financial support