



**HAL**  
open science

## Mosquito bites and stage-specific antibody responses against *Plasmodium falciparum* in southern Ghana

Sebastian Shine Kwapong, Kwame Kumi Asare, Kwadwo Asamoah Kusi, Faustina Pappoe, Nicaise Ndam, Rachida Tahar, Anne Poinsignon, Linda Eva Amoah

### ► To cite this version:

Sebastian Shine Kwapong, Kwame Kumi Asare, Kwadwo Asamoah Kusi, Faustina Pappoe, Nicaise Ndam, et al.. Mosquito bites and stage-specific antibody responses against *Plasmodium falciparum* in southern Ghana. *Malaria Journal*, 2023, 22 (1), pp.126. 10.1186/s12936-023-04557-8 . hal-04074086

**HAL Id: hal-04074086**

**<https://hal.science/hal-04074086>**

Submitted on 22 Jun 2023

**HAL** is a multi-disciplinary open access archive for the deposit and dissemination of scientific research documents, whether they are published or not. The documents may come from teaching and research institutions in France or abroad, or from public or private research centers.

L'archive ouverte pluridisciplinaire **HAL**, est destinée au dépôt et à la diffusion de documents scientifiques de niveau recherche, publiés ou non, émanant des établissements d'enseignement et de recherche français ou étrangers, des laboratoires publics ou privés.



Distributed under a Creative Commons Attribution 4.0 International License

RESEARCH

Open Access



# Mosquito bites and stage-specific antibody responses against *Plasmodium falciparum* in southern Ghana

Sebastian Shine Kwapong<sup>1,2†</sup>, Kwame Kumi Asare<sup>3,4†</sup>, Kwadwo Asamoah Kusi<sup>2</sup>, Faustina Pappoe<sup>1</sup>, Nicaise Ndam<sup>5</sup>, Rachida Tahar<sup>5</sup>, Anne Poinson<sup>6</sup> and Linda Eva Amoah<sup>2\*</sup>

## Abstract

**Background** The human host elicits specific immune responses after exposure to various life stages of the malaria parasite as well as components of mosquito saliva injected into the host during a mosquito bite. This study describes differences in IgG responses against antigens derived from the sporozoite (PfCSP), asexual stage parasite (PfEBA175) and the gametocyte (Pfs230), in addition to an *Anopheles gambiae* salivary gland antigen (gSG6-P1), in two communities in Ghana with similar blood stage malaria parasite prevalence.

**Methods** This study used archived plasma samples collected from an earlier cross-sectional study that enrolled volunteers aged from 6 months to 70 years from Simiw, peri-urban community (N = 347) and Obom, rural community (N = 291). An archived thick and thin blood smear for microscopy was used for the estimation of *Plasmodium* parasite density and species and DNA extraction from blood spots and *P. falciparum* confirmation was performed using PCR. This study used the stored plasma samples to determine IgG antibody levels to *P. falciparum* and *Anopheles* salivary antigens using indirect ELISA.

**Results** Individuals from Simiw had significantly higher levels of IgG against mosquito gSG6-P1 [median (95%CI)] [2.590 (2.452–2.783) ng/mL] compared to those from Obom [2.119 (1.957–2.345) ng/mL],  $p < 0.0001$ . Both IgG responses against Pfs230proC ( $p = 0.0006$ ), and PfCSP ( $p = 0.002$ ) were significantly lower in volunteers from Simiw compared to the participants from Obom. The seroprevalence of PfEBA-175.5R ( $p = 0.8613$ ), gSG6-P1 ( $p = 0.0704$ ), PfCSP ( $p = 0.7798$ ) IgG were all similar in Obom and Simiw. However, Pfs230 seroprevalence was significantly higher at Obom compared to Simiw ( $p = 0.0006$ ). Spearman correlation analysis showed no significant association between IgG responses against gSG6-P1, PfCSP, Pfs230proC and PfEBA-175.5R and parasite density at both Obom and Simiw ( $p > 0.05$ ).

**Conclusion** In conclusion, the study showed that participants from Simiw had higher concentrations of circulating gSG6-P1 IgG antibodies but lower concentrations of *P. falciparum* antibodies, PfCSP IgG and Pfs230proC IgG compared to participants from Obom.

**Keywords** *Plasmodium falciparum*, Circumsporozoite surface protein (PfCSP), Erythrocyte binding antigen 175 (PfEBA175), *Anopheles gambiae* salivary protein gSG6 peptide 1 (gSG6-P1), Malaria transmission, Ghana

<sup>†</sup>Sebastian Shine Kwapong and Kwame Kumi Asare contributed equally to this work

\*Correspondence:

Linda Eva Amoah

levaamoah@noguchi.ug.edu.gh

Full list of author information is available at the end of the article



## Background

Sustaining the gains in malaria control requires efforts to develop new and sensitive diagnostic tools, interventions to reduce contact with the mosquito vector as well as new drugs and vaccines. *Plasmodium* parasites undergo a complex life cycle within the mosquito vector and the human host [1–4]. Exposure to various life cycle stages of the malaria parasite results in the host eliciting immune responses that include specific antibody responses against these different parasite life cycle stages. Antibody responses against the malaria parasite can be indicative of exposure and thus serve as markers of infection or serve a specific function such as used to regulate the infection or block transmission [5].

*Plasmodium falciparum* infections containing gametocytes can result in the development of transmission-blocking immunity, which prevents the completion of the parasite's life cycle in the mosquito as well as antibodies that are indicative of exposure to gametocytes. Gametocytes picked-up by mosquitoes develop into sporozoites which subsequently infect the human host during a blood meal. Sporozoites are the first parasite stage to be encountered by the human host and initiate an infection. The surface of sporozoites has antigens including the circumsporozoite protein (PfCSP) that induces cell-mediated and antibody immune responses in the host [6, 7]. Immune responses generated by a host against this parasite stage prevents the establishment of an infection within the liver [8].

*Plasmodium falciparum* merozoites develop from sporozoites and invade erythrocytes through a number of receptor-ligand interactions, including the erythrocyte binding antigen 175 (PfEBA175)-glycophorin A (GPA) receptor interaction [9, 10]. Several previous studies have reported the use of antibodies against PfEBA175 to inhibit *P. falciparum* invasion of erythrocytes by blocking the PfEBA-GPA interaction [11]. High levels of PfEBA175 antibodies have also been reported to reduce *P. falciparum* parasite density and burden in malaria-endemic areas [12–14].

The ookinete surface antigen, Pfs230 is found on the surface of gametocytes and thus exposed to the human immune system. Full length as well as various fragments of Pfs230 have been found to elicit humoral immune response in individuals infected with sexual stages of the parasite. Antibodies against Pfs230 have been found to prevent gamete fusion and subsequent completion of the sporogonic parasite life cycle in the mosquito [15] and serves the purpose of blocking malaria transmission.

The human host responds to the injection of mosquito saliva during a bite by producing antibodies, including antibodies against the *Anopheles gambiae* salivary protein gSG6 peptide 1 (gSG6-P1) [16, 17]. Seroprevalence

and intensity of IgG responses against gSG6-P1 can be used as a potential biomarker of human exposure to mosquito bites [18, 19] and can serve as a potential biomarker of human exposure to mosquito bites [20].

Rural areas have higher risks of malaria exposure than peri-urban areas due to improved socioeconomic status, housing systems, and limited mosquito breeding sites [21, 22]. However, the two study sites, Obom (rural area) and Simiw (peri-urban area) have similarly high malaria prevalence [13, 23]. However, the risk factors contributing to the high malaria prevalence in these communities are unknown.

There is growing evidence of an association between IgG antibodies against *Anopheles* saliva protein components and some antibody responses to *Plasmodium* antigens [24]. The previous report showed that individuals with higher IgG response to the *Anopheles* gSG6-P1 salivary peptide had lower antibody response to the PfMSP1 antigen [25]. Also, a multiplex bead-based assay that simultaneously detected IgG to *Anopheles albimanus* salivary gland extract (SGE) and twenty-three *P. falciparum* antigens among the Haitian population reported a significant association between IgG antibodies to *P. falciparum* CSP, Rh2\_2030, and SEA-1 antigens and high IgG response against SGE [26]. However, the role IgG against gSG6-P1 plays in the humoral response to *Plasmodium* antigens is unclear.

The study hypothesized that there would be a high prevalence of *Plasmodium*-specific antibody responses in communities with high levels of exposure to mosquito vectors. This study compared IgG responses against PfCSP, PfEBA175 and Pfs230 in individuals with varying levels of anti-gSG6-P1 IgG levels among age groups and gender, in two malaria-endemic communities in Ghana.

## Methods

### Study site and population

This study used samples from a study that has already been published [23]. The cross-sectional study was conducted from December 2019 to January 2020 in two malaria endemic communities in Southern Ghana. The communities include Simiw, a rural community within the Komenda Edina Eguafo Abrim District (KEEA) in the Central Region of Ghana and Obom, a peri-urban community within the Ga South Municipality of the Greater Accra Region of Ghana. Malaria transmission is similar in both Simiw and Obom is perennial with the peak malarial season occurring with the major raining season between June and August [13]. A total of 639 volunteers aged 6 months to 70 years without any symptoms of clinical malaria were recruited from Simiw (N = 347) and Obom (N = 292).

### Sample collection and processing

An earlier report has described the sample collection and processing steps involved in this study [23]. Briefly, a digital thermometer was used to measure the axillary temperature of each study participant. Subsequently, 1 mL of whole blood was collected into EDTA vacutainer tubes. Ten (10)  $\mu$ L aliquot of blood was used to prepare thick and thin blood smears. The remaining whole blood was separated into packed cells that were used for DNA extraction and subsequent *P. falciparum* species PCR and plasma that was stored at  $-20^{\circ}\text{C}$  for future use.

### Estimation of *Plasmodium* parasite density

The blood films were processed and stained with Giemsa according to World Health Organization (WHO) guidelines [27]. The microscopy data used in this study was obtained from the larger previously published dataset [23].

### Polymerase chain reaction detection of *Plasmodium falciparum*

The extracted genomic DNA was subjected to Nested PCR using the previously published protocol. The PCR data used in this study was obtained from the larger previously published dataset [23].

### Indirect enzyme-linked immunosorbent assay (ELISA)

The recombinant antigens Pfs230proC (pro region), PfEBA-175.5R (region III–V) and PfCSP (full length) were produced in *Lactococcus lactis* as previously described by Acquah et al. [28], whilst the gSG6-P1 peptide was synthesized and purified (>95%) by Genepep SA (Saint Jean de Védas, France), shipped lyophilized, resuspended in 0.22  $\mu$ m ultrafiltered water and stored in aliquots at  $-20^{\circ}\text{C}$  until used.

IgG antibody levels against gSG6-P1, PfCSP, Pfs230proC and PfEBA-175.5R were quantified by indirect ELISA as described by Acquah et al. [28]. A 96-well NUNC Maxisorp ELISA plate was coated with either 1  $\mu$ g/well of gSG6-P1 or CSP in phosphate buffered saline (PBS, pH 7.2), 20  $\mu$ L/well EBA-175.5R in PBS, pH 7.2 or 1  $\mu$ g/well of Pfs230proC in carbonate buffer, pH 9.0 and incubated overnight at 4  $^{\circ}\text{C}$ . The plates were then washed three times with 250  $\mu$ L/well of wash buffer [PBS containing 0.05% Tween 20 (PBS-T)]. The plates were subsequently blocked with 200  $\mu$ L/well of blocking buffer (3% skimmed milk in PBS) and incubated for an hour. The plates were then washed three times and incubated for an hour with duplicate samples comprising of 100  $\mu$ L/well diluted plasma (1:200), a positive control sample obtained from a pool of seropositive individuals and negative control samples obtained from various pools of

seronegative individuals from Denmark. Purified polyclonal IgG (PB055, The Binding Site) at a starting concentration of 100 ng/ $\mu$ L was serially diluted threefold for 6 additional concentrations and used as a standard calibrator. The plates were washed three times and incubated for an hour with 100  $\mu$ L/well of 1:3000 dilution of goat antihuman IgG-HRP. The plates were incubated with peroxidase substrate 3,3',5,5'-teramethylbenzidine (TMB) for 10 min after the final washing step. 100  $\mu$ L of 0.2 mM sulfuric acid was added to halt the enzymatic reactions and the optical densities (OD) of the contents in the wells were read at 450 nm using a Multiskan FC plate reader (Thermo Scientific, USA).

### Data and statistical analyses

The optical density (OD) values obtained from the plate reader was converted to antibody concentrations using the four-parameter curve-fitting application ADAMSEL FPL (Ed Remarque<sup>®</sup>). A sample was defined as seropositive when the IgG concentrations obtained were higher than the average antibody concentrations of the negative control samples (malaria naïve serum samples) plus two standard deviations. All data were entered into Microsoft Excel (Microsoft Corp., Redmond, WA, USA), and statistically analysed with GraphPad Prism software, version 9.0.2 (GraphPad Software, San Diego, CA, USA). The data were grouped into study sites, diagnostic tests, gender, and age categories. The seroprevalence of gSG6-P1, CSP, Pfs230proC and EBA-175.5R IgG antibodies were determined using simple counts and proportions. The gSG6-P1, CSP, Pfs230proC and EBA-175.5R IgG antibody concentrations were log<sub>10</sub> transformed. The gSG6-P1 concentration was also categorized into moderate (1–1.999 ng/mL), high (2–4.999 ng/mL) and extreme (>5 ng/mL) and 0–0.999 ng/mL was considered as negative for mosquito exposure. The differences in the seroprevalence of the various anti-*P. falciparum* and anti-gSG6-P1 IgG antibody concentrations between the two study sites were determined using Chi-square statistics. Spearman correlation was performed to assess the association between various anti-*P. falciparum* and anti-gSG6-P1 IgG antibodies levels and parasite density. The association between anti-*P. falciparum* and anti-gSG6-P1 IgG antibody concentrations between the Obom and Simiw were determined using Mann Whitney U test statistics. Statistical significance was set at  $P < 0.05$ .

## Results

### Demographic characteristics of the study population

A total of 639 individuals from Obom (N=292 and Simiw (N=347) were enrolled in the study (Table 1). Majority of the participants in Obom 55.1% (161/292) and Simiw 68.0% (236/347) were female. Although none

**Table 1** Demographic characteristics of the study participants

	Study sites		$\chi^2$	df	p
	Obom (OB)	Simiw (SW)			
Sex n/N (%)					
Females	161/292 (55.1)	236/347 (68.0)	2.544	1	0.1107
Males	131/292 (44.9)	111/347 (32.0)	4.864	1	0.0274
Age categories/yrs n/N (%)					
< 5	5/23 (21.7)	17/23 (73.9)	4.570	1	0.0328
6–10	69/115 (60.0)	47/115 (40.9)	2.566	1	0.1092
11–15	104/235 (44.3)	131/235 (55.7)	2.071	1	0.1501
16–20	39/69 (56.5)	30/69 (43.5)	0.7841	1	0.3759
> 20y	75/197 (25.8)	122/197 (61.9)	7.523	1	0.0061
Temperature/°C, median (range)					
< 37.5	36.8 (33.9–37.5)	36.6 (34.0–37.5)	0.02319	1	0.879
> 37.5	–	38.6 (37.6–39.3)	–	–	–
HB concentration g/dL, median (Range)					
< 10	9.7 (8.0–9.9)	9.35 (7.5–9.9)	16.09	1	< 0.0001
10–13	11.5 (10.1–12.9)	11.3 (10.0–13.0)	1.836	1	0.1754
> 13	14.3 (13.1–17.8)	14.0 (31.1–17.8)	23.16	1	< 0.0001
Microscopic diagnosis n/N (%)					
Microscopy+	89/292 (30.5)	124/347 (35.7)	0.9891	1	0.32
Microscopy–	204/292 (69.9)	223/347 (64.3)	0.078	1	0.7804
Parasitaemia/ $\mu$ L, median (range)	440.0 (40.0–12,688.0)	336.0 (32–28,057.0)	–	–	–
PCR diagnosis n/N (%)					
<i>Plasmodium falciparum</i>	116/292 (39.7)	174/347 (50.1)	2.817	1	0.0933
<i>Plasmodium malariae</i>	42/292 (14.4)	62/347 (17.9)	1.02	1	0.3126
<i>Plasmodium ovale</i>	17/292 (5.8)	25/347 (7.2)	0.4333	1	0.5104

df degree of freedom

P &lt; 0.05, significant; P &lt; 0.01, significant; p &lt; 0.001, highly significant

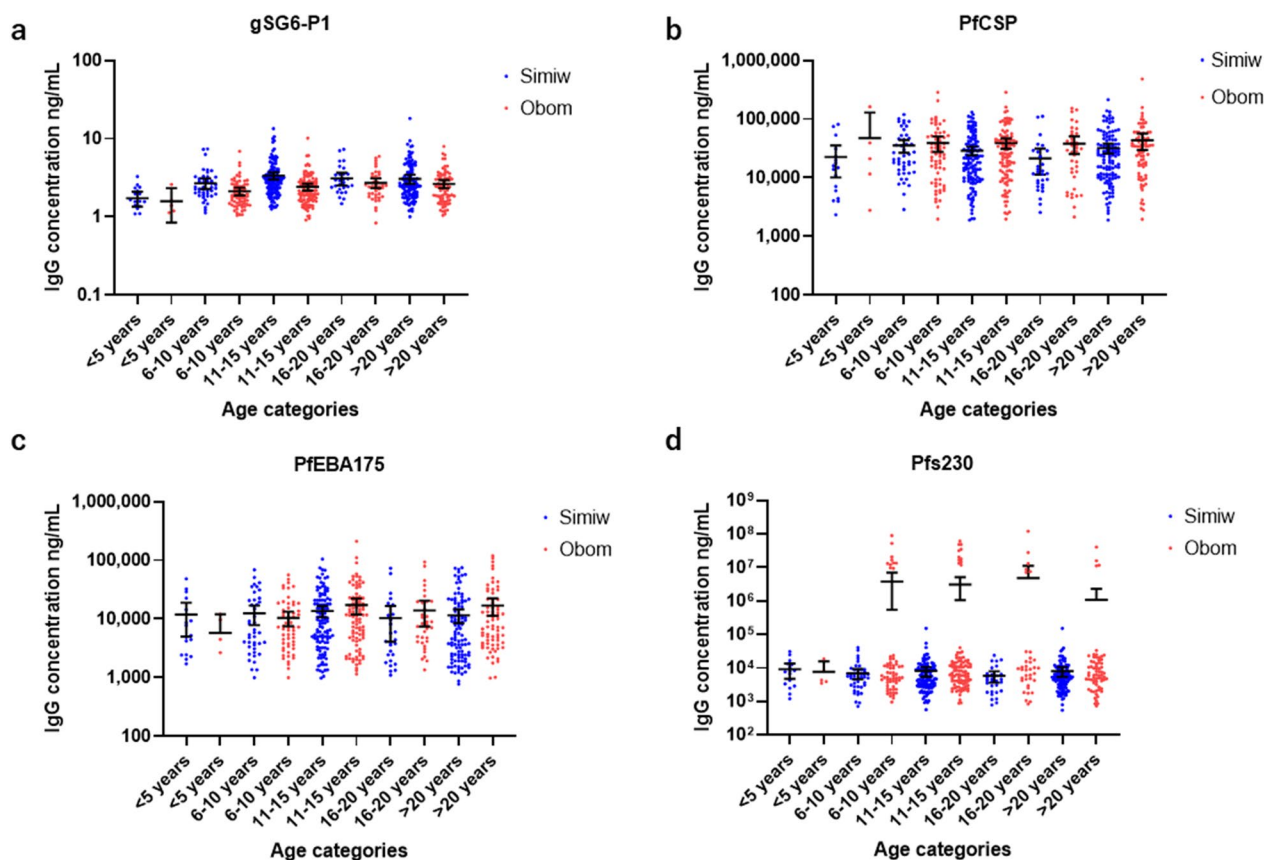
of the participants presented with clinical symptoms of malaria, 39.7% (116/292) and 50.1% (174/347) of the participants from Obom and Simiw, respectively, tested positive for *P. falciparum* by PCR. There was similar median (range) parasite density at both Obom 440 (40–12,688)/ $\mu$ L and Simiw 336 (32–28,057)/ $\mu$ L (Table 1).

### gSG6-P1

Exposure to *Anopheles* bites was evaluated by quantifying IgG levels specific to the gSG6-P1 salivary peptide from *An. gambiae*. Overall, the participants from Simiw had significantly (Mann Whitney U = 38,201, p < 0.0001) higher median gSG6-P1 IgG concentration compared to participants from Obom (Additional file 1: Fig. S1). Participants from Simiw within the 11–15 years old age group had significantly (p < 0.0001) higher levels of gSG6-P1 IgG relative to similarly aged children from Obom. All other age matched categories in Obom and Simiw had similar median gSG6-P1 IgG levels (Fig. 1). Participants from Simiw with PCR confirmed *P. falciparum* infection had higher gSG6-P1 IgG antibodies [median (95% CI)

ng/mL] [2.590 (2.452–2.783) ng/mL] than their counterparts in Obom [2.119 (1.957–2.345) ng/mL], p < 0.0001 (Fig. 2A). Although there was no significant difference in anti-gSG6-P1 IgG levels between individuals with or without PCR confirmed *P. falciparum* infections at Obom (p = 0.2800), there was a significant difference between individuals with and without PCR detectable *P. falciparum* in Simiw (p = 0.0170) (Fig. 2A).

Highly significant difference ( $\chi^2 = 19.55$ , df = 1, p < 0.0001) was observed in the seroprevalence of gSG6-P1 IgG in Simiw [81.3% (282/347)] than Obom [65.5% (190/292)] (Table 2). A similar observation was made for uninfected individuals (p = 0.0027) as well as after comparing male (p = 0.0001) and female (p = 0.002) participants from Obom and Simiw (Additional file 2: Fig. S2A). However, the seroprevalence of gSG6-P1 IgG amongst females in Obom [71.4% (115/161)] was similar to females in Simiw [83.5% (197/236)], and males in Simiw [76.6% (85/111)] than in Obom [57.3% (75/131)]. Also, there was no significant difference across the age categories between Obom and Simiw (Table 2).



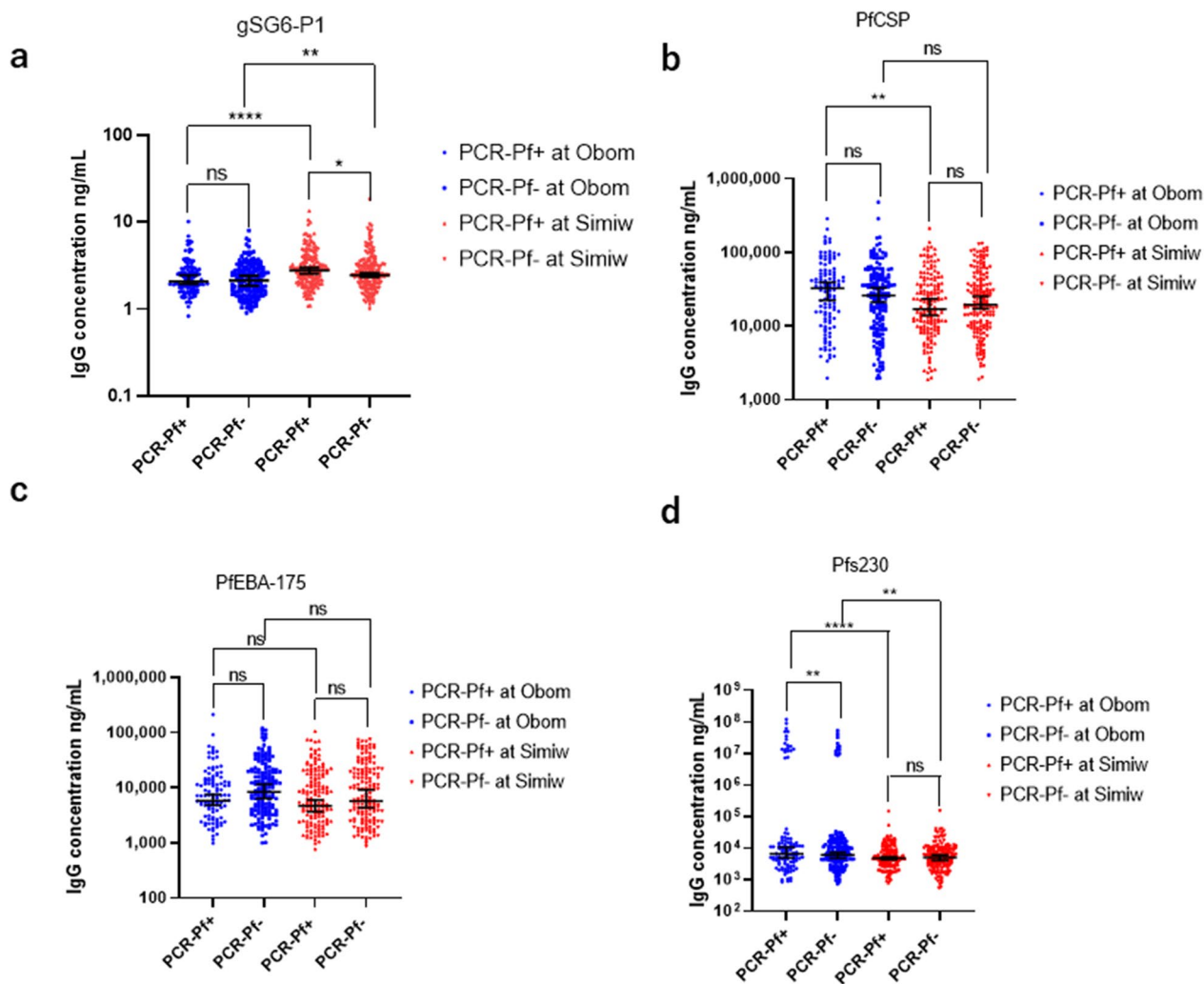
**Fig. 1** Age stratified IgG levels. Each dot presents the individual immunoglobulin G (IgG) antibodies concentration among age categories of the study participants between Obom (OB) and Simiw (SW) against: **A** *Anopheles* salivary gSG6-P1; **B** *Plasmodium falciparum* CSP; **C** *P. falciparum* erythrocyte binding antigen-175 (PfEBA-175); **D** gametocyte surface antigen Pfs230. The horizontal bar indicates the median value of specific IgG levels. The data are represented in log<sub>10</sub>

**PfCSP**

Participants from Obom had significantly higher IgG levels against the CSP (27,781 (23,674–33,921) ng/mL) compared to participants from Simiw [18,330 (15,984–22,924) ng/mL] ( $p=0.002$ , Additional file 1: Fig. S1B). With exception of the 16–20-year age category ( $p=0.049$ ), all other age categories in both Obom and Simiw had similar anti-CSP IgG levels (Fig. 1B). No significant difference was observed in the median anti-CSP IgG in *P. falciparum* PCR positive and negative participants at Obom ( $p=0.1868$ ) and Simiw ( $p=0.3736$ ). However, *P. falciparum* PCR-positive individuals in Obom had significantly ( $p=0.0015$ ) higher median anti-CSP IgG relative to counterparts in Simiw (Fig. 2B). The males and females at both Obom ( $p=0.1804$ ) and Simiw ( $p=0.7798$ ) had similar anti-CSP IgG levels (Additional file 2: Fig. S2B). Overall, seroprevalence of anti-CSP IgG was similar in Obom and Simiw ( $p=0.7044$ ) and not influenced by gender (Table 2).

**PfEBA-175.5R**

There was no significant difference in IgG responses against the erythrocytic binding antigen, PfEBA-175.5R in total population and across the various age categories in individuals from both Simiw and Obom ( $p>0.05$ ) (Fig. 1C, Additional file 1: Fig. S1C). This observation is confirmed by similar parasite prevalence detected by both microscopy and PCR in Obom 30.6% (89/291) and 39.5% (115/291), respectively, and [35.7% (124/347) vs 50.1% (174/347)], respectively, in Simiw (Table 1). In addition, parasite densities in samples from Obom, 440.0 (40.0–12,688.0) and Simiw, 366.0 (32.0–28,052.0) were similar (Table 1). There was no significant difference in the PfEBA-175.5R seroprevalence in Obom [91.1% (266/292)] and Simiw [93% (304/327)] ( $\chi^2=0.0305$ ,  $df=1$ ,  $p=0.8613$ ) overall. Gender did not have any influence on the level and the seroprevalence of anti-PfEBA-175.5R IgG in Obom ( $p=0.882$ ) and Simiw ( $p=0.982$ ) (Table 2; Additional file 2: Fig. S2c).



**Fig. 2** Comparison of IgG levels in PCR-confirmed *P. falciparum* positive and negative individuals. **A** The distribution of *Anopheles* salivary gland gSG6-P1; **B** *P. falciparum* CSP; **C** *P. falciparum* erythrocyte binding antigen-175 (PfEBA-175); **D** gametocyte surface antigen Pfs230 immunoglobulin G (IgG) antibodies concentration in the PCR confirmed *P. falciparum* infections and uninfected case between Obom (OB) and Simiw (SW) study communities. \*\*The data are represented in log10. The significance was tested using Mann Whitney U test; ns ( $p > 0.05$ ) not significant; \* ( $P < 0.05$ ), significant; \*\* ( $P < 0.01$ ), significant; \*\*\* ( $p < 0.001$ ), highly significant; \*\*\*\* ( $p < 0.0001$ ), highly significant

**Pfs230proC**

Exposure to gametocytes was determined by measuring antibody responses against the gametocyte and ookinete surface antigen Pfs230proC. Significantly ( $p = 0.0006$ ) higher IgG responses against Pfs230 were measured in participants from Obom [5993 (5112–7296) ng/mL] compared to Simiw [4822 (4306–5328) ng/mL] (Additional file 1: Fig. S1D). There was no significant difference in the median concentration of Pfs230proC IgG among the various age categories in Obom and Simiw, except among the 11–15 years ( $p = 0.007$ ) and 16–20 years ( $p = 0.0477$ ) old age groups, where participants from Obom had significantly higher levels than their counterparts from Simiw (Fig. 1D). Although there was no

significant difference in Pfs230proC IgG levels between individuals that tested negative or positive for *P. falciparum* by PCR in Simiw ( $p = 0.240$ ), there was a significant difference in Obom ( $p = 0.0071$ ). Individuals with PCR confirmed infections in Obom had significantly higher Pfs230proC IgG levels than individuals with PCR confirmed infections in Simiw ( $p = 0.003$ ) (Fig. 2D). Similarly, the uninfected individuals in Obom had significantly higher Pfs230proC IgG levels than uninfected individuals at Simiw ( $p = 0.048$ ) (Fig. 2D). There was however no significant difference in the median concentration of Pfs230proC IgG antibodies between males and females at Obom  $p = 0.353$  and at Simiw  $p = 0.424$  (Additional file 2: Fig. S2D). The median concentration of Pfs230proC

**Table 2** Seroprevalence of IgG antibodies in Obom and Simiw

Variables	gSG6-P1 IgG		$\chi^2$	df	p	PFCSP IgG		$\chi^2$	df	p	PFEBA-175.5R IgG		$\chi^2$	df	p	Pfs230proC IgG		$\chi^2$	df	p	
	Obom	Simiw				Obom	Simiw				Obom	Simiw				Obom	Simiw				
Community, n/N (%)	190/292 (65.5)	282/347 (81.3)	19.55	1	<0.0001	219/292 (75%)	234/327 (71.6)	0.1439	1	0.7044	266/292 (91.1%)	304/327 (93.0)	0.0305	1	0.8613	244/292 (83.6)	275/327 (84.1)	0.0029	1	0.9572	
Sex, n/N (%)																					
Male	75/131 (57.3)	85/111 (76.6)	0.3635	1	0.5466	95/131 (72.5)	83/111 (74.8)	0.0239	1	0.8771	121/131 (92.4)	97/111 (87.4)	0.0872	1	0.7678	110/131 (84.0)	82/111 (73.9)	0.4328	1	0.5106	
Female	115/161 (71.4)	197/236 (83.5%)	1.003	1	0.3165	124/161 (77.0)	160/236 (67.8)	0.6571	1	0.4176	145/161 (90.1)	207/236 (87.7)	0.0315	1	0.8591	134/161 (83.2)	193/236 (81.8)	0.0134	1	0.9079	
Age categories, n/N (%)																					
< 5 yr	1/5 (20.0)	9/17 (52.9)	0.731	1	0.3926	4/5 (80.0)	11/17 (64.7)	0.0752	1	0.7839	5/5 (100.0)	17/17 (100.0)	0	1	>0.9999	5/5 (100.0)	14/17 (82.4)	0.0712	1	0.7896	
6–10 yr	36/68 (52.9)	39/47 (83.0)	2.27	1	0.1319	48/68 (70.6)	40/47 (85.1)	0.4279	1	0.513	61/68 (89.7)	42/47 (89.4)	0.0002	1	0.9889	54/68 (79.4)	36/47 (76.6)	0.0158	1	0.8998	
11–15 yr	69/104 (66.3)	113/130 (86.9)	1.798	1	0.1799	79/104 (76.0)	87/130 (66.9)	0.3872	1	0.5338	94/104 (90.4)	113/130 (86.9)	0.0415	1	0.8387	94/104 (90.4)	102/130 (78.5)	0.5304	1	0.4665	
16–20 yr	31/39 (79.5)	28/30 (93.3)	0.2032	1	0.6521	28/39 (71.8)	17/30 (56.7)	0.3653	1	0.5456	33/39 (84.6)	27/30 (90.0)	0.0301	1	0.8622	31/39 (79.5)	21/30 (70.0)	0.1164	1	0.733	
> 20 yr	53/76 (69.7)	93/123 (75.6)	0.1284	1	0.7201	60/76 (78.9)	88/123 (71.5)	0.1966	1	0.6576	73/76 (96.1)	105/123 (85.4)	0.3127	1	0.576	60/76 (78.9)	102/123 (82.9)	0.0506	1	0.822	

df degree of freedom

P < 0.05, significant; P < 0.01, significant; p < 0.001, highly significant



IgG in males from Obom [6562 (5021–8994)] was significantly ( $p=0.003$ ) higher than detected in males from Simiw [4269 (3481–5328)] (Additional file 2: Fig. S2D). However, there was no significant ( $p=0.053$ ) difference in Pfs230proC IgG in females from Obom and Simiw. The seroprevalence of anti-Pfs230proC IgG in Obom 83.6% (244/292) and Simiw 84.1% (275/327) was similar  $\chi^2=0.0029$ ,  $df=1$ ,  $p=0.9572$  (Table 2).

**Association between IgG concentration and parasite density**

Spearman correlation showed no significant correlation between IgG antibody concentrations of gSG6-P1, PfCSP, Pfs230proC and PfEBA-175.5R and parasite density (Fig. 3A–D). The correlation coefficient (95% CI) of association between gSG6-P1 IgG antibody and parasite density was  $r=0.03565$  (–0.2785 to 0.2492),  $p=0.7416$  at Obom and  $r=-0.0968$  (–0.2785 to 0.09163),  $p=0.2992$  at Simiw (Fig. 3A).

**Association between salivary gland IgG levels and *P. falciparum* IgG levels**

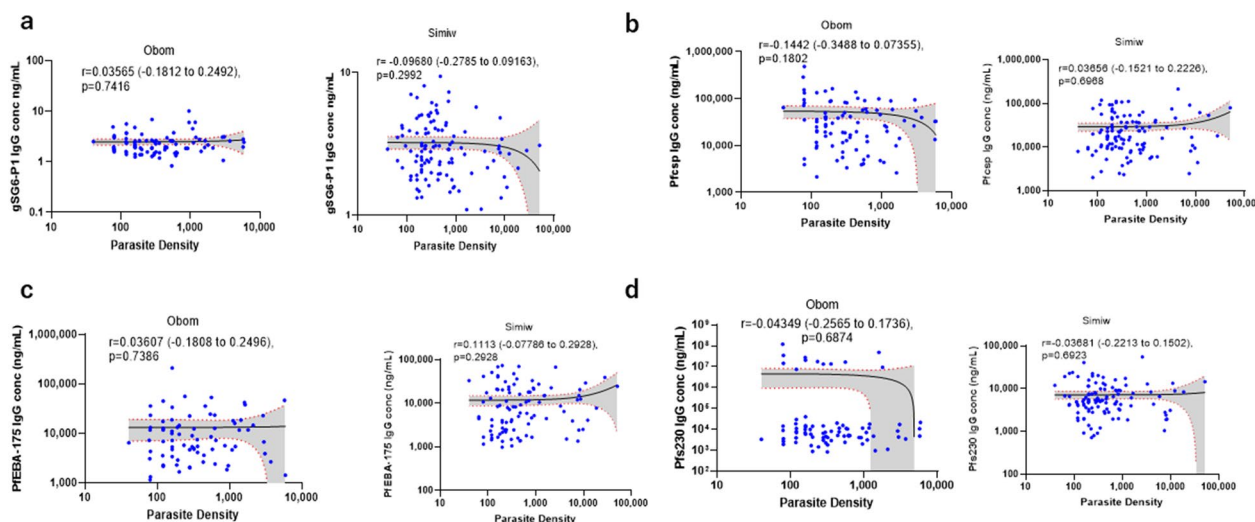
The PfCSP, PfEBA-175 and Pfs230 IgG antibody concentrations were compared across Obom and Simiw among individuals with similar mosquito exposure levels (gSG6-P1 IgG concentrations of 1–1.999 ng/mL, 2–4.999 ng/mL and >5 ng/mL) (Fig. 4). The results show significantly lower levels of anti-PfCSP IgG (sporozoite exposure) among subjects with moderate 1–1.999 ng/mL IgG gSG6-P1 antibody level (Mann–Whitney  $U=4128$ ,

$p=0.002$ ) at Simiw relative to Obom. However, there was no significant difference in anti-Pfs230 and PfEBA-175 IgG concentration among individuals in both Obom and Simiw with moderate gSG6-P1 IgG responses (1–1.999 ng/mL) (Fig. 4A).

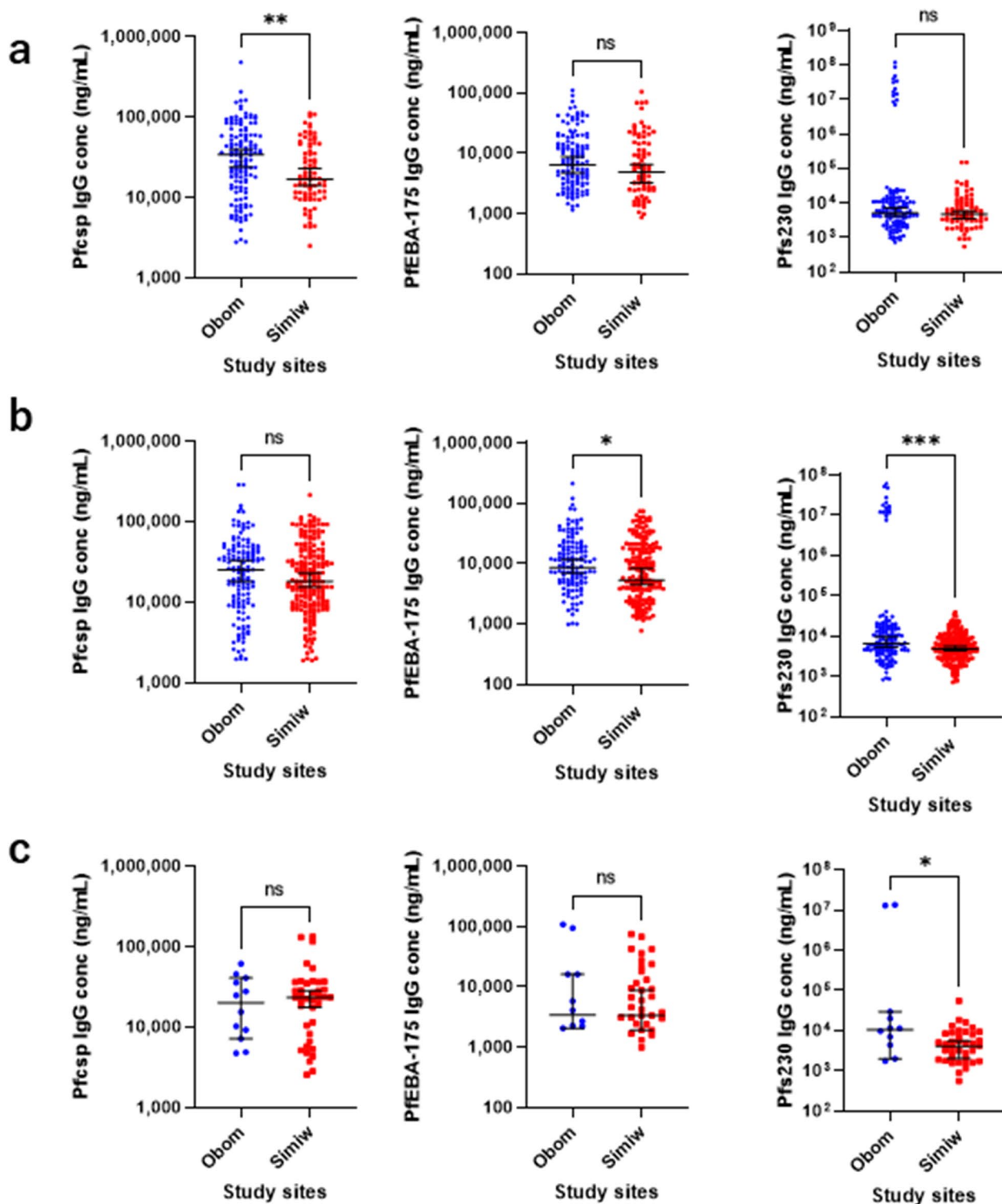
Individuals with high gSG6-P1 IgG concentrations (2–4.999 ng/mL) in Simiw had significantly lower IgG concentration of Pfs230 (Mann–Whitney  $U=11,740$ ,  $p=0.0004$ ), and PfEBA-175 (Mann–Whitney  $U=27,103$ ,  $p=0.0468$ ) compared to individuals from Obom with similar gSG6-P1 IgG responses. However, IgG responses against PfCSP in individuals from Obom and Simiw were similar in people high levels (2–4.999 ng/mL) of anti-gSG6-P1 IgG (Fig. 4B).

Individuals with >5 ng/mL anti-gSG6-P1 IgG levels in Obom had significantly higher levels Pfs230 (Mann–Whitney  $U=146.5$ ,  $p=0.034$ ) compared to individuals from Simiw with similar anti-gSG6-P1 IgG levels (Fig. 4C). The significant difference in Pfs230 IgG antibodies between Obom and Simiw was due to a small sub-group of individuals in Obom who had high IgG antibodies of Pfs230 (Additional file 3: Fig. S3A, B).

The correlation between levels of IgG antibodies to PfCSP, Pfs230 and PfEBA-175 to gSG6-P1 IgG were assessed among individuals within the three gSG6-P1 IgG categories; 1–1.999 ng/mL, 2–4.999 ng/mL and >5 ng/mL gSG6-P1 IgG concentrations (Additional file 4: Fig. S4). There was a significant negative correlation between PfEBA-175 IgG and individuals with moderate gSG6-P1 IgG (1–1.999 ng/mL) in Simiw [ $r=-0.2702$  (–0.4643



**Fig. 3** Spearman correlation between the distribution of IgG levels and *P. falciparum* parasite density. **A** Spearman correlation between the distribution of *Anopheles* salivary gland gSG6-P1; **B** *P. falciparum* CSP; **C** *P. falciparum* erythrocyte binding antigen-175 (PfEBA-175); **D** gametocyte surface antigen Pfs230 immunoglobulin G (IgG) antibodies and the distribution of *P. falciparum* parasite density in the study communities. \*\*The X- and Y-axis are represented in log10. The significance ( $p>0.05$ ) not significant; ( $P<0.05$ ), significant; ( $P<0.01$ ), significant; ( $p<0.001$ ), highly significant; ( $p<0.0001$ ), highly significant



**Fig. 4** *Plasmodium falciparum* stage-specific IgG levels in individuals with similar mosquito exposure. Association of IgG antibodies of PFCSP, PFEBA-175, and Pfs230 between Obom and Simiw with: **A** 1–2 ng/mL; **B** 2–5 ng/mL; **C** > 5 ng/mL gSG6-P1 IgG antibody exposure. \*\*The X- and Y-axis are represented in log<sub>10</sub>

to  $-0.05156$ ),  $p=0.014$ ] but not in Obom [ $r=-0.0738$  ( $-0.2452$  to  $0.102$ ),  $p=0.397$ ]. No association was observed between anti-Pfs230 or PfCSP IgG levels and moderate ( $1-1.999$  ng/mL) IgG gSG6-P1 levels.

A similar significantly negative correlation was identified between high ( $2-4.999$  ng/mL) gSG6-P1 IgG and anti-Pfs230 IgG levels in Simiw [ $r=-0.1357$  ( $-0.267$  to  $0.003346$ ),  $p=0.049$ ] but not in Obom [ $r=-0.1132$  ( $-0.2768$  to  $0.05682$ ),  $p=0.178$ ]. No other associations were identified between moderate and high gSG6-P1 IgG and the measured antiparasite IgG in Simiw and Obom (Additional file 4: Fig. S4A, C).

## Discussion

Several factors regulate the dynamics of *P. falciparum* infection and transmission in malaria-endemic settings. The gold standard for measuring malaria transmission intensity is using entomological inoculation rate (EIR), however, the insufficiencies associated with the traditional estimation of EIR using infected mosquitoes have led to the identification of some serological markers of exposure to malaria parasites as alternative and more effective measures of malaria transmission intensity in both high and low transmission settings [17, 18].

Variations in host factors and exposures to malaria parasites can impact the immune responses generated by the host [29]. Host-specific immune response to malaria infection can offer protection against severe malaria and control transmission in endemic areas [28]. However, there are still gaps in understanding of the role of antibodies against various malaria parasite stage or mosquito antigens play in influence transmission.

This study assessed antibody levels against the sporozoite stage of the malaria parasite, PfCSP, the asexual blood stage parasites, PfEBA175 and the sexual blood stage parasite Pfs230 in individuals with varying levels of exposure to the mosquito vector, in two communities of high malaria transmission in southern Ghana.

The formulation of malaria control and elimination programmes are based on the intensity of malaria transmission within a community. The IgG to gSG6-P1 is a proxy to exposure and in some contexts has been associated to clinical outcomes [17, 18]. It could be used in assessing temporal and spatial variations in exposure to *Anopheles* mosquito bites [17, 20]. The study showed a significantly high seroprevalence and high median concentration of gSG6-P1 IgG antibodies in Simiw compared to Obom, which could pose a high risk of increased malaria transmission in Simiw. The higher exposure to mosquitoes in Simiw is likely due to the influence of environmental factors such as having large areas of stagnant water, which serves as mosquito breeding sites. Also, individuals from Obom are more urban and likely

to protect themselves from mosquito bites [30, 31]. The increased levels of IgG to gSG6-P1 in women at both study sites was surprising as it has previously been suggested that different behaviour of men, including staying outdoors after dark predisposes them to more frequent encounters with mosquitoes [32]. The high exposure of females to mosquitoes could be a result of changes in the behaviour of mosquitoes, where there are increased reports of mosquitoes biting during the early morning or an increase in biting indoor [33–36], when females are busy sweeping and doing other household chores. Significantly higher levels of PfCSP IgG antibodies in circulation in Obom compared to Simiw may indicate higher vector competency and effective malaria transmission [37, 38] at Obom than in Simiw. The likely explanation could be that mosquitoes in Obom are more efficient at transmitting malaria, however vector competence was not evaluated in this study. Another explanation could be that there were more transmission reservoirs (gametocyte carriers) in Obom relative to Simiw where there was an abundance of mosquitoes. Indeed, participants from Obom presented higher anti-Pfs230 levels.

High IgG antibodies to PfEBA 175 in people living in *P. falciparum* endemic communities, protect against erythrocytic stage invasion and symptomatic malaria [12, 13]. There was no significant difference in the median concentration and seroprevalence of IgG antibodies to PfEBA 175 in individuals from Simiw and Obom. This observation was expected as the two communities had similar malaria prevalence and parasite densities.

Gametocyte carriage is essential for malaria transmission however, exposure to gametocytes can reduce malaria transmission as some antibodies against gametocyte antigens, including antibodies against specific regions of Pfs230 serve as transmission blocking antibodies, which can prevent the development of the parasite in the mosquito [15, 38]. The study observed that although the seroprevalence of IgG antibodies against Pfs230 was very similar in Obom and Simiw, there was a significantly higher median concentration of IgG antibodies to Pfs230 in Obom compared to Simiw. Since specific Pfs230 IgG antibodies can be transmission blocking [15, 39] and or serve as a marker of exposure to gametocytes. It was observed that a sub-population of participants from Obom had very high levels of IgG antibodies, suggesting a recent exposure to high gametocyte densities. Also, a significant number of this sub-population were confirmed to harbour *P. falciparum*.

The study compared similar levels of exposure to mosquitoes in Obom and Simiw; the result showed that at a moderate concentration of gSGP1 IgG (concentration of  $1-1.999$  ng/mL), Simiw had lower exposure to *P. falciparum* sporozoites, indicating a higher prevalence

of uninfected mosquitoes than Obom. Exposure to uninfected mosquito bites has been suggested to reduce liver stage hypnozoites as well as asexual stage parasite burden relative to exposure to malaria-infected mosquitoes [40, 41]. A previous report also identified an increase in interleukin-12, gamma interferon and inducible nitric oxide synthase after repeated exposure to uninfected mosquito bites. These T-helper 1 (Th1) immunity regulate asexual stage parasitaemia in a murine model [42]. This study showed no significant difference in PfEBA-175 IgG antibodies in Obom and Simiw, suggesting similar exposure to asexual parasites. Interesting, individuals in Obom and Simiw with high (2–5 ng/mL) levels of gSGP1 IgG antibodies (high exposure to mosquito bites) had similar exposure to sporozoites (PfCSP IgG antibodies). However, Simiw had lower asexual stage parasite density and exposure to asexual parasites (PfEBA-175 IgG antibody levels) compared to Obom, supporting the observation that mosquito salivary components reduce asexual parasite burden [40, 41].

## Conclusion

The study showed that participants from Simiw had higher concentrations of circulating gSG6-P1 IgG antibodies but lower concentrations of *P. falciparum* antibodies, PfCSP IgG and Pfs230proC IgG compared to participants from Obom.

## Supplementary Information

The online version contains supplementary material available at <https://doi.org/10.1186/s12936-023-04557-8>.

**Additional file 1: Figure S1.** The overall Immunoglobulin G (IgG) antibody levels among the study communities. **a** Distribution of Anopheles salivary gland gSG6-P1; **b** *Plasmodium falciparum* CSP; **c** *Plasmodium falciparum* EBA 175; **d** *Plasmodium falciparum* Pfs230 immunoglobulin G (IgG) antibodies among the study communities. The data are represented in log<sub>10</sub>. The significance was tested using Mann Whitney U test; ns ( $p > 0.05$ ) not significant; \* ( $P < 0.05$ ), significant; \*\* ( $P < 0.01$ ), significant; \*\*\* ( $p < 0.001$ ), highly significant; \*\*\*\* ( $p < 0.0001$ ), highly significant.

**Additional file 2: Figure S2.** Immunoglobulin G (IgG) levels in male and female study participants. **a** The Anopheles salivary gland. **b** The *P. falciparum* CSP. **c** The *P. falciparum* erythrocyte binding antigen-175 (PfEBA-175). **d** The gametocyte surface antigen Pfs230 immunoglobulin G (IgG) antibodies concentration among male and female study participants between Obom (OB) and Simiw (SW). The data are represented in log<sub>10</sub>.

**Additional file 3: Figure S3.** *P. falciparum* stage-specific IgG antibodies with similar mosquito exposures after excluding sub-groups expressing high Pfs230 IgG antibody. Association of IgG antibodies of PfCSP, Pfs230, PfEBA-175 between Obom and Simiw with **a** 2–5 ng/mL; **b** > 5 ng/mL gSG6-P1 IgG antibody exposure after excluding sub-groups expressing high Pfs230 IgG antibody at Obom. The data are represented in log<sub>10</sub>.

**Additional file 4: Figure S4.** Correlation of *P. falciparum* stage-specific IgG antibodies across individuals with different levels of mosquito exposure. Correlation between **a** 1–2 ng/mL; **b** 2–5 ng/mL; **c** > 5 ng/mL gSG6-P1 IgG antibodies and PfCSP, Pfs230, and PfEBA-175 in Obom and Simiw.

## Acknowledgements

We thank all the study participants for willingly participating in the study.

## Author contributions

Conceptualization, LEA; formal analysis, KKA, LEA, SSK, AP; methodology, SSK; supervision, LEA, FP; validation, KKA, SSK, RT, KAK; visualization, SSK, KKA; writing—original draft, KKA, SSK, LEA; writing—review and editing, KKA, LEA, AP, RT, NN, RT, KAK. All authors read and approved the final manuscript.

## Funding

This project was partially funded by the JEA1-STIMULI project awarded to LEA; AKK was partly supported with the 2021/2022 Ghana government books and research allowance BRA2021/2022.

## Availability of data and materials

All the data are available in the manuscript and Additional data.

## Declarations

### Ethics approval and consent to participate

The study was approved by the Institutional Review Board (IRB) of the Noguchi Memorial Institute for Medical Research (NMIMR No. 024/14-15 and 089/14-15). Written informed consent including assent for adolescents aged from 12 to 17, and parental consent for children aged 17 years and below were obtained from all the recruited study participants.

### Consent for publication

Not applicable.

### Competing interests

The authors declare no competing interests.

### Author details

<sup>1</sup>Department of Microbiology and Immunology, School of Medical Sciences, University of Cape Coast, Cape Coast, Ghana. <sup>2</sup>Department of Immunology, Noguchi Memorial Institute for Medical Research, College of Health Sciences, University of Ghana, Accra, Ghana. <sup>3</sup>Department of Biomedical Science, School of Allied Health Sciences, University of Cape Coast, Cape Coast, Ghana. <sup>4</sup>Biomedical and Clinical Research Centre, College of Allied Health Sciences, University of Cape Coast, Cape Coast, Ghana. <sup>5</sup>MERIT, IRD, Université de Paris Cité, 75006 Paris, France. <sup>6</sup>IRD, CNRS, MIVEGEC, University of Montpellier, 34000 Montpellier, France.

Received: 19 December 2022 Accepted: 7 April 2023

Published online: 15 April 2023

## References

- Nureye D, Assefa S. Old and recent advances in life cycle, pathogenesis, diagnosis, prevention, and treatment of malaria including perspectives in Ethiopia. *Sci World J.* 2020;2020:1295381.
- Vaughan A. Motile mosquito stage malaria parasites: ready for their close-up. *EMBO Mol Med.* 2021;13: e13975.
- Corran P, Coleman P, Riley E, Drakeley C. Serology: a robust indicator of malaria transmission intensity? *Trends Parasitol.* 2007;23:575–82.
- Drakeley CJ, Corran PH, Coleman PG, Tongren JE, McDonald SL, Carneiro I, et al. Estimating medium-and long-term trends in malaria transmission by using serological markers of malaria exposure. *Proc Natl Acad Sci USA.* 2005;102:5108–13.
- Duffy PE, Patrick GJ. Malaria vaccines since 2000: progress, priorities, products. *NPJ Vaccines.* 2020;5:48.
- Gibbins MP, Müller K, Glover M, Liu J, Putrianti ED, Bauza K, et al. Importance of the immunodominant CD8+ T cell epitope of *Plasmodium berghei* circumsporozoite protein in parasite-and vaccine-induced protection. *Infect Immun.* 2020;88:e00383–e420.
- Belachew EB. Immune response and evasion mechanisms of *Plasmodium falciparum* parasites. *J Immunol Res.* 2018;2018:6529681.

8. Galactionova K, Smith TA, Penny MA. Insights from modelling malaria vaccines for policy decisions: the focus on RTS, S. *Malar J*. 2021;20:439.
9. Jaskiewicz E, Jodłowska M, Kaczmarek R, Zerka A. Erythrocyte glycoporphins as receptors for *Plasmodium* merozoites. *Parasites Vectors*. 2019;12:317.
10. Beeson JG, Drew DR, Boyle MJ, Feng G, Fowkes FJ, Richards JS. Merozoite surface proteins in red blood cell invasion, immunity and vaccines against malaria. *FEMS Microbiol Rev*. 2016;40:343–72.
11. Chowdhury P, Ray S, Chakraborty A, Sen S, Dasgupta AK, Sengupta S. Non-synonymous amino acid alterations in PfEBA-175 modulate the merozoite ligand's ability to interact with host's Glycophorin A receptor. *Infect Genet Evol*. 2020;85: 104418.
12. Abagna HB, Acquah FK, Okonu R, Aryee NA, Theisen M, Amoah LE. Assessment of the quality and quantity of naturally induced antibody responses to EBA175R111–V in Ghanaian children living in two communities with varying malaria transmission patterns. *Malar J*. 2018;17:14.
13. Amoah LE, Abagna HB, Akyea-Mensah K, Lo AC, Kusi KA, Gyan BA. Characterization of anti-EBA175R111–V in asymptomatic adults and children living in communities in the Greater Accra Region of Ghana with varying malaria transmission intensities. *BMC Immunol*. 2018;19:34.
14. Quelhas D, Puyol L, Quintó L, Serra-Casas E, Nhampossa T, Macete E, et al. Impact of intermittent preventive treatment with sulfadoxine–pyrimethamine on antibody responses to erythrocytic-stage *Plasmodium falciparum* antigens in infants in Mozambique. *Clin Vaccine Immunol*. 2008;15:1282–91.
15. Duffy PE. Transmission-blocking vaccines: harnessing herd immunity for malaria elimination. *Expert Rev Vaccines*. 2021;20:185–98.
16. Amoah B, McCann RS, Kabaghe AN, Mburu M, Chipeta MG, Moraga P, et al. Identifying *Plasmodium falciparum* transmission patterns through parasite prevalence and entomological inoculation rate. *Elife*. 2021;10: e65682.
17. Kassam NA, Kulaya N, Kaaya RD, Schmiegelow C, Wang CW, Kavishe RA, et al. Use of anti-gSG6-P1 IgG as a serological biomarker to assess temporal exposure to *Anopheles* mosquito bites in Lower Moshi. *PLoS ONE*. 2021;16: e0259131.
18. Cheteug G, Elanga-Ndille E, Donkeu C, Ekoko W, Oloume M, Essangui E, et al. Preliminary validation of the use of IgG antibody response to *Anopheles* gSG6-p1 salivary peptide to assess human exposure to malaria vector bites in two endemic areas of Cameroon in Central Africa. *PLoS ONE*. 2020;15: e0242510.
19. Drame PM, Poinson A, Besnard P, Cornelie S, Le Mire J, Toto JC, et al. Human antibody responses to the *Anopheles* salivary gSG6-P1 peptide: a novel tool for evaluating the efficacy of ITNs in malaria vector control. *PLoS ONE*. 2010;5: e15596.
20. Ya-Umphun P, Cerqueira D, Cottrell G, Parker DM, Fowkes FJ, Nosten F, et al. *Anopheles* salivary biomarker as a proxy for estimating *Plasmodium falciparum* malaria exposure on the Thailand-Myanmar border. *Am J Trop Med Hyg*. 2018;99:350–6.
21. Siri JG, Wilson ML, Murray S, Rosen DH, Vulule JM, Slutsker L, et al. Significance of travel to rural areas as a risk factor for malarial anemia in an urban setting. *Am J Trop Med Hyg*. 2010;82:391–7.
22. Nahum A, Erhart A, Mayé A, Ahounou D, van Overmeir C, Menten J, et al. Malaria incidence and prevalence among children living in a peri-urban area on the coast of Benin, West Africa: a longitudinal study. *Am J Trop Med Hyg*. 2010;83:465–73.
23. Acquah FK, Donu D, Obboh EK, Bredu D, Mawuli B, Amponsah JA, et al. Diagnostic performance of an ultrasensitive HRP2-based malaria rapid diagnostic test kit used in surveys of afebrile people living in Southern Ghana. *Malar J*. 2021;20:125.
24. Asare KK. The submicroscopic *Plasmodium falciparum* malaria in sub-Saharan Africa—current understanding of the host immune system and new perspectives. In: Piccaluga PP, editor. *Malaria—recent advances and new perspectives*. IntechOpen. 2022. <https://www.intechopen.com/online-first/81972>.
25. Aka KG, Traoré DF, Sagna AB, Zoh DD, Assi SB, Tchiekoi BN, et al. Pattern of antibody responses to *Plasmodium falciparum* antigens in individuals differentially exposed to *Anopheles* bites. *Malar J*. 2020;19:83.
26. Jaramillo-Underwood A, Impoinvil D, Sutcliffe A, Hamre KE, Joseph V, Hoogen LV, et al. Factors associated with human IgG antibody response to *Anopheles albimanus* salivary gland extract, Artibonite Department, Haiti, 2017. *J Infect Dis*. 2022;226:1461–9.
27. WHO. Giemsa staining of malaria blood films. WHO/HTM/GMP/MM/SOP/2016.07a. Geneva: World Health Organization; 2016.
28. Acquah FK, Obboh EK, Asare K, Boampong JN, Nuvor SV, Singh SK, et al. Antibody responses to two new *Lactococcus lactis*-produced recombinant Pfs48/45 and Pfs230 proteins increase with age in malaria patients living in the Central Region of Ghana. *Malar J*. 2017;16:306.
29. Loiseau C, Cooper MM, Doolan DL. Deciphering host immunity to malaria using systems immunology. *Immunol Rev*. 2020;293:115–43.
30. Awosolu OB, Yahaya ZS, Farah Haziqah MT, Simon-Oke IA, Olanipekun IT, Oniya MO. Epidemiology of falciparum malaria among residents of some rural and peri-urban communities in Ekiti State, Southwestern Nigeria. *Trop Biomed*. 2021;38:14–21.
31. Yan J, Gangoso L, Ruiz S, Soriguer R, Figuerola J, Martínez-de la Puente J. Understanding host utilization by mosquitoes: determinants, challenges and future directions. *Biol Rev*. 2021;96:1367–85.
32. Ebuka EK, Chukwudi EM, Chikaodili UB, Udoka NC, Cosmas OO, Paschal A, et al. The impact of human and socio-cultural behavior on outdoor malaria transmission in a rural community of Nigeria: the Nyumagbagh experience. *World Rural Observ*. 2020;12:56–69. <https://doi.org/10.7537/marswro12042007>.
33. Reddy MR, Overgaard HJ, Abaga S, Reddy VP, Caccone A, Kiszewski AE, et al. Outdoor host seeking behaviour of *Anopheles gambiae* mosquitoes following initiation of malaria vector control on Bioko Island, Equatorial Guinea. *Malar J*. 2011;10:184.
34. Moiroux N, Damien GB, Egrot M, Djenontin A, Chandre F, Corbel V, et al. Human exposure to early morning *Anopheles funestus* biting behavior and personal protection provided by long-lasting insecticidal nets. *PLoS ONE*. 2014;9: e104967.
35. Mmbando AS, Ngowo HS, Kilalangongono M, Abbas S, Matowo NS, Moore SJ, et al. Small-scale field evaluation of push-pull system against early-and outdoor-biting malaria mosquitoes in an area of high pyrethroid resistance in Tanzania. *Wellcome Open Res*. 2017;2:112.
36. Stone W, Gonçalves BP, Bousema T, Drakeley C. Assessing the infectious reservoir of falciparum malaria: past and future. *Trends Parasitol*. 2015;31:287–96.
37. Shapiro LL, Murdock CC, Jacobs GR, Thomas RJ, Thomas MB. Larval food quantity affects the capacity of adult mosquitoes to transmit human malaria. *Proc Biol Sci*. 2016;283:20160298.
38. Healer J, Thompson JK, Riglar DT, Wilson DW, Chiu YH, Miura K, et al. Vaccination with conserved regions of erythrocyte-binding antigens induces neutralizing antibodies against multiple strains of *Plasmodium falciparum*. *PLoS ONE*. 2013;8: e72504.
39. Keleta Y, Ramelow J, Cui L, Li J. Molecular interactions between parasite and mosquito during midgut invasion as targets to block malaria transmission. *NPI Vaccines*. 2021;6:140.
40. Walk J, Reuling IJ, Behet MC, Meerstein-Kessel L, Graumans W, van Gemert GJ, et al. Modest heterologous protection after *Plasmodium falciparum* sporozoite immunization: a double-blind randomized controlled clinical trial. *BMC Med*. 2017;15:168.
41. Churcher TS, Sinden RE, Edwards NJ, Poulton ID, Rampling TW, Brock PM, et al. Probability of transmission of malaria from mosquito to human is regulated by mosquito parasite density in naive and vaccinated hosts. *PLoS Pathog*. 2017;13: e1006108.
42. Donovan MJ, Messmore AS, Scrafford DA, Sacks DL, Kamhawi S, et al. Uninfected mosquito bites confer protection against infection with malaria parasites. *Infect Immun*. 2007;75:2523–30.

## Publisher's Note

Springer Nature remains neutral with regard to jurisdictional claims in published maps and institutional affiliations.