



HAL
open science

Correction: Trends in clinical characteristics and outcomes of all critically ill COVID-19 adult patients hospitalized in France between March 2020 and June 2021: a national database study

Diane Naouri, Albert Vuagnat, Gaëtan Beduneau, Martin Dres, Tai Pham, Alain Mercat, Alain Combes, Alexandre Demoule, Antoine Kimmoun, Matthieu Schmidt, et al.

► **To cite this version:**

Diane Naouri, Albert Vuagnat, Gaëtan Beduneau, Martin Dres, Tai Pham, et al.. Correction: Trends in clinical characteristics and outcomes of all critically ill COVID-19 adult patients hospitalized in France between March 2020 and June 2021: a national database study. *Annals of Intensive Care*, 2023, 13 (1), pp.20. 10.1186/s13613-023-01111-2 . hal-04073600

HAL Id: hal-04073600

<https://hal.science/hal-04073600v1>

Submitted on 15 May 2024

HAL is a multi-disciplinary open access archive for the deposit and dissemination of scientific research documents, whether they are published or not. The documents may come from teaching and research institutions in France or abroad, or from public or private research centers.

L'archive ouverte pluridisciplinaire **HAL**, est destinée au dépôt et à la diffusion de documents scientifiques de niveau recherche, publiés ou non, émanant des établissements d'enseignement et de recherche français ou étrangers, des laboratoires publics ou privés.




Distributed under a Creative Commons Attribution 4.0 International License

CORRECTION

Open Access



Correction: Trends in clinical characteristics and outcomes of all critically ill COVID-19 adult patients hospitalized in France between March 2020 and June 2021: a national database study

Diane Naouri^{1*} , Albert Vuagnat¹, Gaëtan Beduneau², Martin Dres³, Tai Pham⁴, Alain Mercat⁵, Alain Combes⁶, Alexandre Demoule³, Antoine Kimmoun⁷, Matthieu Schmidt⁶ and Matthieu Jamme^{8,9}

Correction: *Annals of Intensive Care* (2023) 13:2
<https://doi.org/10.1186/s13613-022-01097-3>

In the original publication [1] of the article, the Fig. 2 was incorrectly published where the line from Fig. 2B have been moved to Fig. 2A by mistake. The corrected Fig. 2

is given in this Correction article. The original article has been corrected.

Published online: 19 March 2023

The original article can be found online at <https://doi.org/10.1186/s13613-022-01097-3>.

*Correspondence:

Diane Naouri
diane.naouri@sante.gouv.fr

¹ Department for Research, Studies, Assessment and Statistics (DREES), French Ministry of Health, 10 Place Des 5 Martyrs du Lycée Bufon, 75014 Paris, France

² UNIROUEN, EA 3830, Medical Intensive Care Unit, Rouen University Hospital, Normandie University, 76000 Rouen, France

³ Service de Pneumologie et Réanimation Médicale, Hôpital Pitié Salpêtrière, Assistance Publique Hôpitaux de Paris, Paris, France

⁴ Service de Médecine Intensive-Réanimation, Hôpital du Kremlin Bicêtre, Assistance Publique Hôpitaux de Paris, Le Kremlin Bicêtre, France

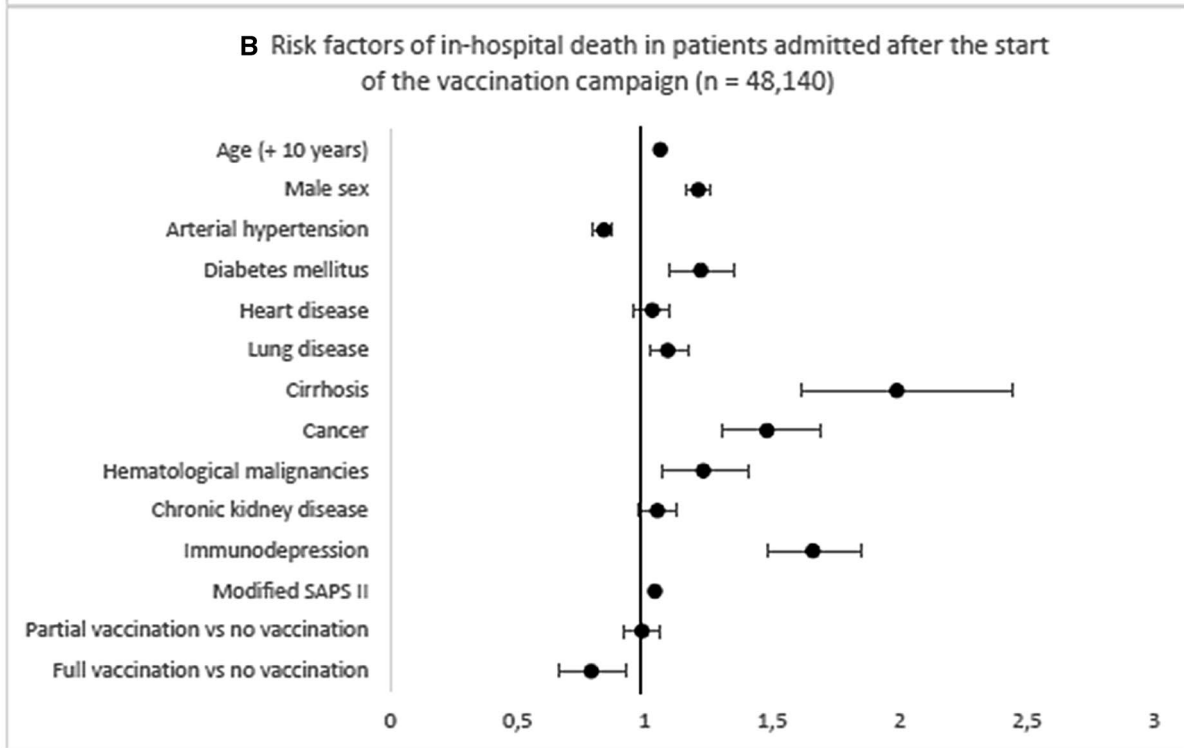
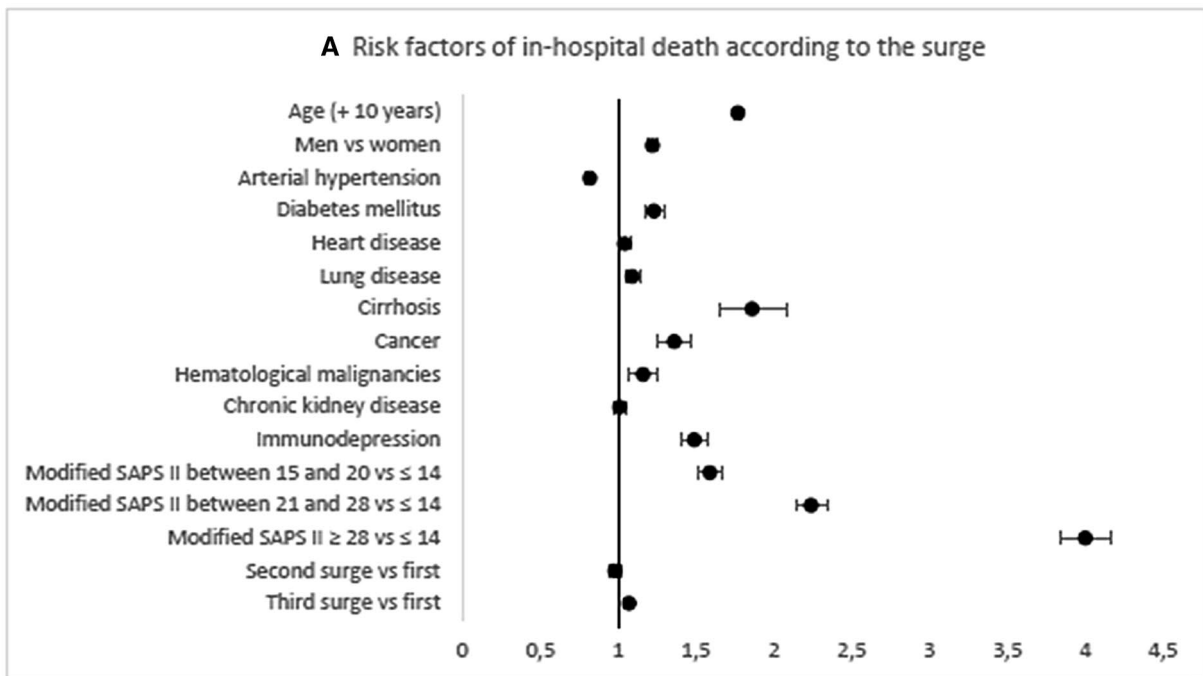
⁵ Service de Réanimation Médicale et Médecine Hyperbare, CHU Angers, Angers, France

⁶ Sorbonne Université, GRC 30, RESPIRE, UMRS_1166-ICAN, Institute of Cardiometabolism and Nutrition, Service de Médecine Intensive-Réanimation, Assistance Publique-Hôpitaux de Paris (APHP) Hôpital Pitié-Salpêtrière, Paris, France

⁷ Service de Médecine Intensive-Réanimation, CHRU Nancy, Nancy, France

⁸ Service de Réanimation Polyvalente, Hôpital Privé de l'Ouest Parisien, Ramsay-Générale de Santé, Trappes, France

⁹ CESP, INSERM U1018, Equipe Epidémiologie Clinique, Villejuif, France



● The round represents the strength of the association between the risk factor and in-hospital death in the Fine and Gray model (sub-hazard ratio)

— The black line represents the confidence intervals of the sub hazard ratio

Fig. 2 Risk factors of in-hospital death

Reference

1. Naouri D, Vuagnat A, Beduneau G, Dres M, Pham T, Mercat A, Combes A, Demoule A, Kimmoun A, Schmidt M, Jamme M. Trends in clinical characteristics and outcomes of all critically ill COVID-19 adult patients hospitalized in France between March 2020 and June 2021: a national database study. *Ann Intensive Care*. 2023;13:2. <https://doi.org/10.1186/s13613-022-01097-3>.

Publisher's Note

Springer Nature remains neutral with regard to jurisdictional claims in published maps and institutional affiliations.