



HAL
open science

A New Genus, New Species and New Country Records of Longhorned Beetles (Cerambycidae, Lamiinae) from Panama.

Alfredo Lanuza-Garay

► **To cite this version:**

Alfredo Lanuza-Garay. A New Genus, New Species and New Country Records of Longhorned Beetles (Cerambycidae, Lamiinae) from Panama.. *Faunitaxys*, 2023, 11 (25), pp.1-5. hal-04056905

HAL Id: hal-04056905

<https://hal.science/hal-04056905v1>

Submitted on 3 Apr 2023

HAL is a multi-disciplinary open access archive for the deposit and dissemination of scientific research documents, whether they are published or not. The documents may come from teaching and research institutions in France or abroad, or from public or private research centers.

L'archive ouverte pluridisciplinaire **HAL**, est destinée au dépôt et à la diffusion de documents scientifiques de niveau recherche, publiés ou non, émanant des établissements d'enseignement et de recherche français ou étrangers, des laboratoires publics ou privés.



Distributed under a Creative Commons Attribution - NonCommercial - NoDerivatives 4.0 International License

Faunitaxys

*Revue de Faunistique, Taxonomie et Systématique
morphologique et moléculaire*



Volume 11
Numéro 25

Mars 2023

ISSN: 2269 - 6016
Dépôt légal : Mars 2023

Faunitaxys

*Revue de Faunistique, Taxonomie et Systématique
morphologique et moléculaire*

ZooBank : <http://zoobank.org/79A36B2E-F645-4F9A-AE2B-ED32CE6771CC>

Directeur de la publication, rédacteur, conception graphique et PAO:

Lionel Delaunay

Cette revue ne peut pas être vendue

Elle est distribuée par échange aux institutions (version papier)

et sur simple demande aux particuliers (format PDF)

à l'adresse suivante:

AFCFF (Association française de Cartographie de la Faune et de la Flore)

28, rue Voltaire, F- 42100 Saint Etienne

E-mail: faunitaxys.journal@gmail.com

Elle est disponible librement au téléchargement à partir du site:

<http://faunitaxys.fr/>

La parution de *Faunitaxys* est apériodique

Faunitaxys est indexé dans / *Faunitaxys* is indexed in:

- **Zoological Record**

Articles and nomenclatural novelties are referenced by:

- **ZooBank** (<http://zoobank.org>)

Online Archives:

- **HAL** (<https://hal.archives-ouvertes.fr>)

- **Internet Archive** (<https://archive.org>)

Imprimée sur les presses de SPEED COPIE, 6, rue Tréfilerie, F- 42100 Saint-Etienne

Imprimé le 31 mars 2023

A New Genus, New Species and New Country Records of Longhorned Beetles (Cerambycidae, Lamiinae) from Panama

ALFREDO LANUZA-GARAY (1, 2)

(1) Universidad de Panamá, Centro Regional Universitario de Colón, Escuela de Biología, Departamento de Zoología, Cristobal County, Randolph Avenue, Rainbow City, Colon City, PANAMA.

- E-mail: alfredo.lanusa@up.ac.pa - Orcid: <https://orcid.org/0000-0003-0480-5490>

- ZooBank: <http://zoobank.org/10339FE9-0467-4C73-A9A1-6C86260811BE>

(2) Museo de Invertebrados Graham Bell Fairchild, Universidad de Panamá, Manuel Espinosa Batista Avenue, Panama City, PANAMA.

Keywords:

Cerambycidae; *iolandae*;
Lamiinae; description;
Longhorned beetles; new species;
Sphallopatoroides; taxonomy;
Pseudosparna; new records;
pirreanus; Panama.

Abstract. – *Sphallopatoroides* gen. nov., *Sphallopatoroides pirreanus* sp. nov., and *Pseudosparna iolandae* sp. nov. are described from Panama. New country records from Panama are provided: *Leptostylus armatus* Monné & Hoffmann, 1981; *Atrypanius cinerascens* (Bates, 1864); and *Colobothea chemsaki* Giesbert, 1979.

Lanuza-Garay A., 2023. – A New Genus, New Species and New Country Records of Longhorned Beetles (Cerambycidae, Lamiinae) from Panama. *Faunitaxys*, 11(25): 1 – 5.

DOI: [https://doi.org/10.57800/faunitaxys-11\(25\)](https://doi.org/10.57800/faunitaxys-11(25))

ZooBank: <http://zoobank.org/7B5A9163-772D-493A-A057-C2472FDD0EA4>

Received: 06/03/2023 – Revised: 29/03/2023 – Accepted: 30/03/2023

Introduction

In recent years, studies of Central American longhorned beetles (Cerambycidae) continue to reveal new species and distribution records (e.g. Bezark *et al.* 2013, Lanuza-Garay & Santos Murgas 2018; Wappes & Santos-Silva 2020; Lanuza-Garay 2022, Heffern & Santos Silva, 2022, Nearn *et al.* 2023). In 2002, my colleagues Roberto Cambra and Alonso Santos Murgas placed Malaise traps along the Cerro Pirre, Darien National Park, Darien province, Panama. Among the longhorned beetle specimens collected were some undescribed Lamiinae. Herein, I describe and illustrate two new species of longhorned beetles from Panama: *Pseudosparna iolandae* sp. nov. (Lamiinae: Acanthocinini) and *Sphallopatoroides pirreanus* sp. nov. a new genus (Lamiinae: Calliini). Also, new country records are provided for *Leptostylus armatus* Monné & Hoffmann, 1981 (Lamiinae: Acanthocinini), *Atrypanius cinerascens* (Bates, 1864) (Lamiinae: Acanthocinini), and *Colobothea chemsaki* Giesbert, 1979 (Lamiinae: Colobotheini).

Material and methods

Photographs were taken in the MIUP with a Sony a6000 camera, equipped with AMSCOP 4x close-up lens and Nikkor Z MC 105mm f/2.8 VR S aperture for angular frames and edited by the “tracking” technique using Photoshop software. Measurements were taken in “mm” using Leica M165 C stereomicroscope with measuring ocular, also used in the study of the specimens. Identification of specimens was made through original descriptions, type photographs, and comparison with specimens deposited in the MIUP and CRUC

collection. Classification and distributional data are based on Giesbert (1979), Monné & Monné (2014, 2016), Audureau & Morvan (2018), Tavakilian & Santos-Silva (2019), Monné *et al.* (2020), Vlasak & Santos-Silva (2022), Monné (2023).

The collection acronyms used in the text are as follows:

MIUP: Museo de Invertebrados G.B. Fairchild, Universidad de Panamá, Panama

CRUC: Colección de Insectos, Escuela de Biología, Centro Regional Universitario de Colón, Universidad de Panamá, Panama

MACO: Marianne Akers Private Collection, Colon, Panama (currently deposited in the CRUC)

STRI: Smithsonian Tropical Research Institute Insect Collection, Panama

Results

LAMIINAE Latreille, 1825

CALLIINI Thomson, 1864

***Sphallopatoroides* gen. nov.**

ZooBank: <http://zoobank.org/FC7ADDD4-F3C3-4B35-862C-18045947C393>

Type species. – *Sphallopatoroides pirreanus* sp. nov.

Etymology. – From *Sphallopatorata* Audureau & Morvan, 2018, generic name, and Greek suffix “oides” = resemble to (masculine gender).

Description of the male

Small size.

Head. – *Frons* with small gibbosity centrally close to clypeus. – *Eyes* moderately coarsely faceted; upper eye lobes wide, with distance between them greater than width of a lobe; lower eye lobes protruding, slightly shorter than

Reviewer :

Antonio Santos-Silva (*Museu de Zoologia, Universidade de São Paulo, Brazil*) - Orcid: <https://orcid.org/0000-0001-7128-1418>

- ZooBank: <http://zoobank.org/8E7804F2-4315-4D23-9FA5-2E5D13841364>



This is an open access article under the terms of the Creative Commons Attribution-NonCommercial-NoDerivs License, which permits use and distribution in any medium, provided the original work is properly cited, the use is non-commercial and no modifications or adaptations are made.

Copyright 2023 The Authors. *Faunitaxys* published by Lionel Delaunay on behalf of the AFCFF (Association française de Cartographie de la Faune et de la Flore).

gena. – *Antenna* distinctly surpassing elytral apex; area of connection between ocular lobes with more than three ommatidia. – *Scape* gradually enlarged from base to about middle, then subparallel-sided toward apex; with apical cicatrix. – *Antennomeres* filiform, slender, without dense setae ventrally; antennomere III slightly longer than scape and IV, distinctly longer than remaining antennomeres.

Prothorax. – Slightly wider than long; sides unarmed, with deep constriction at basal third.

Pronotum. – *Prothorax* slightly wider than long; sides unarmed, with deep constriction at basal third. – *Pronotum* without distinct gibbosities. Mesoventral process without tubercle; apex widened, deeply emarginate.

Elytra. – Nearly parallel-sided, slightly narrowed from humerus to middle, distal third slightly rounded. – *Apex* subtruncate, with outer angle slightly acutely projected; with long, erect sparse setae; dorsally depressed, with well-defined centrobasal gibbosity. – *Humeral carina* well marked from base to near apex; with two moderately well-marked carinae dorsally, from base to distal third, near humeral carina; sides with another distinct carina between humeral carina and eplieural margin reaching apex.

Legs. – Apex of metafemora reaching about apex of abdominal ventrite 2.. – *Mesotibiae* without lateral sulcus. – *Metatarsomere* I as long as II–III together. – *Tarsal claws* appendiculate; basal tooth of claws developed.

Remarks. – The general appearance of *Sphallopatoroides* gen. nov. resembles genus *Sphallopatora* Audureau and Morvan, 2018 (= *Hemilophopsis* Tavakilian and Santos-Silva, 2019). However, the scape of *Sphallopatora* do not have an apical cicatrix (present in *Sphallopatoroides*). *Sphallopatoroides* resembles more closely the genera of Hemilophini than Calliini – eg. *Eranina leuconoe* (Bates, 1881) (Fig. 6). However, the tarsal claws are distinctly appendiculate and not bifid.

***Sphallopatoroides pirreanus* sp. nov.**

(Fig. 1-5)

ZooBank: <http://zoobank.org/7B9A3A07-56C1-450C-9D7C-091AAEEEDBAE>

Holotype, ♂, PANAMA, Darien Province, Darien National Park, Pirre, Est. Rancho Frio, 8. viii.-1. x. 2002, Malaise Trap. R. Cambra & A. Santos Murgas leg. (MIUP).

Diagnosis (holotype ♂). – Head, mandible apex (except yellowish area of labrum, maxillary and labial palpi, reddish-brown clypeus, reddish-brown basal region of mandibles, and yellowish-brown gulamentum), elytra, femora, tibiae, and tarsi dark-brown; scape dark brown dorsally covered with whitish pubescence not obscuring integument; pedicel and antennomere III dark brown; antennomere IV dark brown on basal 3/4, pale yellow on distal quarter; antennomeres V–VII pale yellow; antennomere VIII pale-yellow on basal 3/4, dark-brown on distal quarter; antennomeres IX–XI dark brown; pronotum orange, with subquadrate macula on each side close to posterior margin, basal area between these maculae orange; elytra entirely black, slightly lighter on distal third; coxae and trochanters orange, pro-, meso-, and metasternum orange; abdomen dark brown. Tarsal claws reddish brown.

Dimensions (mm).

- Total length, 7.5;
- Prothoracic length, 1.5;
- Basal prothoracic width, 1.7;
- Distal prothoracic width, 1.6;
- Humeral width, 1.9;
- Elytral length, 5.0.

Description of the holotype

Head. – Frons moderately abundantly, finely punctate; integument glabrous, dense yellowish-white pubescence close to lower eye lobes. Vertex moderately abundantly, finely punctate; with golden pubescence

partially obscuring integument; with a few long, erect yellowish setae close to upper eye lobes. Area behind eyes glabrous, punctate. Genae with dense yellowish-white pubescence partially obscuring integument. Antennal tubercles with yellowish-white pubescence not obscuring integument. Median groove distinct from clypeus to prothoracic margin. External margin of mandibles covered with dense yellowish pubescence obscuring integument, basal area with sparse long yellowish setae. Gulamentum glabrous. Distance between upper eye lobes 0.31 times length of scape; in frontal view, distance between lower eye lobes 0.90 times length of scape. Antennae 1.6 times elytral length, reaching elytral apex at antennomere VII; scape, pedicel and antennomeres III–X with long, erect sparse setae ventrally (shorter, sparser toward X).

Antennal formula (ratio) based on length of antennomere III:

– Scape = 0.88. – Pedicel = 0.18. – IV = 0.75. – V = 0.56. – VI = 0.44. – VII = 0.44. – VIII = 0.44. – IX = 0.31. – X = 0.25. – XI = 0.21.

Thorax. – *Prothorax* 1.2 times wider than long. *Pronotum* moderately abundantly and coarsely punctate; with golden pubescence nearly obscuring integument except yellowish-brown pubescence on dark area, not obscuring integument, more pale yellow centrally on basal area, and nearly glabrous on small central area before middle; with long, erect, sparse yellowish setae. Sides of prothorax with moderately sparse punctures slightly coarser than on pronotum; with golden pubescence not obscuring integument. Prosternum and mesoventrite with pale-yellow pubescence distinctly not obscuring integument (slightly denser, more golden laterally on mesoventrite); mesanepisternum, mesepimeron, metanepisternum, and sides of metaventrite with abundant, golden pubescence not obscuring integument; central area of metaventrite with golden pubescence distinctly sparser than laterally. Scutellum with yellowish pubescence obscuring integument.

Elytra. – Coarsely, abundantly punctate on basal 2/3, punctures slightly coarser dorsally close to humeral carina, nearly smooth on distal third; distal third with dense beige pubescence, except brownish pubescence close to lateral margin; erect setae more abundant on basal half.

Legs. – Femora ventrally with long, erect, sparse yellowish setae interspersed. Tibiae covered with dense yellowish pubescence not obscuring integument.

Abdomen. – Ventrites covered with yellowish-white pubescence not obscuring integument, and long, erect, sparse yellowish setae interspersed; apex of ventrite 5 truncate, centrally feebly emarginate.

Etymology. – Allusion to the type locality Cerro Pirre; Darien National Park, Panama.

ACANTHOCININI Blanchard, 1845

Pseudosparna Mermudes & Monné, 2009

***Pseudosparna iolandae* sp. nov.**

(Fig. 7-11)

ZooBank: <http://zoobank.org/6BA86F33-C724-4661-9580-28AFD944E696>

Holotype, ♂, PANAMA, Darien Province, Darien National Park, Pirre, Est. Rancho Frio, 8.viii-1. x. 2002, Malaise Trap. R. Cambra & A. Santos Murgas leg. (MIUP).

Paratypes

- 1 ♂, Darien Province, Darien National Park, Pirre, Est. Rancho Frio, 8.viii-1. x. 2002, Malaise Trap. R. Cambra & A. Santos Murgas leg. (CRUC).
- 1 ♂, Darien Province, Darien National Park, Pirre, Est. Rancho Frio, 7-16. xi. 2000, Malaise Trap. R. Cambra & A. Santos Murgas leg. (MIUP);
- 1 ♂, Darien Province, Darien National Park, Pirre, Est. Rancho Frio, 16. xi. 2001 - 17. i. 2001, Malaise Trap. R. Cambra & A. Santos Murgas leg. (MIUP).

Diagnosis. – Integument reddish brown, dorsally covered with golden pubescence; ventral surface reddish brown, covered with regular yellowish pubescence; mouthparts, coxae, trochanters, femora, and basal half of tibiae yellowish brown; frons yellowish brown, antennal tubercles surface reddish brown, scape reddish brown, apex black, basal half of antennomere IV yellowish. *Prothorax* reddish brown ventrally, laterally with an anteroposterior dark-brown band. *Pronotum* with two longitudinal dark brown



Fig. 1-5. *Sphallopataroides pirreanus* sp. nov, holotype ♂. 1. Dorsal. 2. Ventral. 3. Lateral. 4. Head. 5. Scape showing apical cicatrix (red arrow). Red arrow line marks the limit of scape meanwhile black dotted line refers the point of pedicel start.

Fig. 6. *Eranina leuconoe* (Bates, 1881) ♀.

bands along the central disc. Scutellum black. Elytral surface with whitish pubescence, with regular and moderate little reddish-brown spots, except: medial and preapical maculae reddish brown, the former reaching lateral margin; longitudinal dark-brown macula close to epipleura reaching lateral preapical margin.

Dimensions (mm) (holotype).

- Total length, 6.0;
- Length of prothorax at center, 1.2;
- Width of prothorax (at wider point), 1.6;
- Humeral width, 1.9;
- Elytral length, 4.5.

Description of the holotype

Head. – Frons transverse, slightly convex anteriorly and depressed between antennal tubercles. Integument finely punctate with yellowish pubescence covering surface, denser laterally and along median groove, which is deep and narrow reaching clypeus; upper inter-ocular space 3.7x wider than upper ocular lobe; antennal tubercles surface covered with yellowish pubescence; antennae slender, finely punctate, with short and sparse semi-erect black setae on internal side; scape sub-conical.

Antennal formula based antenommere III:

- Scape = 1.36. – Pedicel = 0.12. – IV = 0.90. – V = 0.75. – VI = 0.60.
- VII = 0.60. – VIII = 0.70. – IX = 0.75. – X = 0.56. – XI = 0.86.

Thorax. – Prothorax cylindrical, transverse, 1.5x wider than long, with lateral tubercles short and acute, each with a shallow, dorsal depression at base. Pronotum moderately convex on disc, depressed basally; integument finely punctate; with short appressed yellowish pubescence, denser laterally;

prosternal process acute apically, as wide as one seventh of a procoxa; mesoventral process narrowly truncate, as wide as one fourth of a mesocoxa; metepisterna covered with dense yellowish-grey pubescence.

Elytra. – 2.3x longer than wide; subparallel-sided, with setae lining posterior third of lateral margins, basal half finely and moderately punctate; humeri barely projected, centrobasal gibbosity smooth; disc laterally depressed on basal half; integument with regular deeper punctures; elytral surface with yellowish-grey pubescence, apex semi-circularly emarginate, outer angles slightly projected into acute spine. Prosternal process very narrow, anterior coxae almost contiguous; mesosternal process less than ¼ the width of one mesocoxa. Metathoracic discrimen visible on apical half of metasternum.

Abdomen. – Urosternites finely punctate with short yellowish setae; last urosternite emarginate, with two short spines laterally.

Legs. – Coxae, trochanters, and basal third of femora yellowish brown; femora pedunculate, tibiae straight; integument with short appressed greyish pubescence and relatively short semi-erect black setae on apical third of tibiae.

Etymology. – Named to recognize Yolanda Moreno de Niño, colleague and friend for several years, for his huge contribution to biological science teaching along her career. Her first name is proposed here as a Latin variant voice.

Collection site. – The Rancho Frio Biological Station is located within the Darien National Park, Panama (UTM: 18P0198757; 0887272). This area has a lowland semi-deciduous forest, with an annual rainfall of 1,310 mm and an average temperature of 19.9°C. The specimens were collected during a field trip in 2002.

New Country Records

Leptostylus armatus Monné & Hoffmann, 1981

(Fig. 12)

Previous distribution. – Ecuador, French Guiana, Brazil (Amazonas), Peru, Bolivia (Santa Cruz).

Examined material. – PANAMA, Colon prov., Buena Vista, IDIAP Research Coffee plantation, 25.x.2022, BROCAP trap. Col. J. Santos & A. Martinez (1 specimen ♀) CRUC.

Atrypanius cinerascens (Bates, 1864)

(Fig. 13)

Previous distribution. – Trinidad and Tobago, Colombia, Venezuela, French Guiana, Brazil (Amazonas, Pará).

Examined material. – PANAMA, Darien Province, Darien National Park, Pirre, Est. Rancho Frio, 8.viii.1. x.2002, Malaise Trap. R. Cambra & A. Santos Murgas leg. (9 specimens, 3♂, 6♀) (MIUP). Colon prov., Buena Vista, IDIAP Research Coffee plantation, 12.xii.2022, BROCAP trap. Col. J. Santos & A. Martinez (1 specimen) CRUC.

Colobothea chemsaki Giesbert, 1979

(Fig. 14)

Previous distribution. – México (Oaxaca), Honduras, Costa Rica.

Examined material. – PANAMA,

- Darien National Park, Rancho Frio Station, 450 msnm; 21.iii. - 4. iv. 2000, Malaise trap. R. Cambra, A. Santos-Murgas, S. Bermudez leg. (1 specimen ♀) (MIUP);

- Colon prov. Ft. Espinar, 15. v.1993. M. Akers leg. (1 specimen) (MACO-CRUC);

- Panama prov., Capira, Cerro Campana, 30.vii.1974, H. Stockwell leg. (2 specimens) (STRI);

- Colon prov. Cerro Viejo Mine Road, 25.iv.1992, H. Stockwell leg. (1 specimen) (STRI);

- Panama prov. Barro Colorado island, 6.iv. 1979, H. Wolda leg. (2 specimens) (STRI).

Acknowledgements

I thank Roberto Cambra, Alonso Santos Murgas (MIUP), Annette Aiello and Marleny Rivera (STRI) for approving the loan of the specimen used in this study, and provided photographs of each specimens treated here and Celso Hernandez for the photographic editing of the beetles treated in this manuscript. Also I would like to thank Antonio Santos-Silva (Museu de Zoologia, Universidade de São Paulo, São Paulo, SP, Brazil) and Marianne Akers for their useful comments and review of the English.

References

- Adureau A. & Morvan O. 2018. – Notes sur quelques Hemilophini nouveaux ou peu connus de Guyane Française (Coleoptera, Cerambycidae, Lamiinae). *Les Cahiers Magellanes*, 32(NS): 1 - 8.
- Bezark L.G., Tyson W.H. & Schiff N.M., 2013. – New Species of Cerambycidae from Panama, with New Distributional Records (Coleoptera: Cerambycidae). *Zootaxa*, 3608 (4), 273 - 277. <http://dx.doi.org/10.11646/zootaxa.3608.4.5>
- Giesbert E.F., 1979. – A review of the Mexican and Central American species of *Colobothea* Serville (Coleoptera: Cerambycidae). *The Coleopterists Bulletin*, 33 (4), 415 - 438.
- Heffern D. & Santos Silva A., 2022. – Description of two new Panamanian species of Acanthocinini and notes on *Eleothis abstrusus* Bates (Coleoptera, Cerambycidae, Lamiinae). *Zootaxa*, 5178 (3): 256 - 264. <https://doi.org/10.11646/zootaxa.5178.3.4>
- Lanuza-Garay A., 2022. – A New Species of *Confluentia* Santos-Silva, Galileo & McClarin (Cerambycidae: Lamiinae: Colobotheini) from Panamá. *Faunitaxys*, 10 (36), 1 - 3.
- Lanuza-Garay A. & Santos Murgas A., 2018. – Escarabajos longicornios (Coleoptera: Cerambycidae y Disteniidae) del Parque Nacional Darién, Panamá. *Insecta Mundi*, 633: 1 - 11.
- Monné M.A., 2023. – Catalogue of the Cerambycidae (Coleoptera) of the Neotropical Region. Part II. Lamiinae. https://cerambycids.com/default.asp?action=show_catalog
- Monné M.A., Santos Silva A. & Monné M.L., 2020. – Key to South American genera of Acanthocinini (Coleoptera, Cerambycidae, Lamiinae) with erect setae on elytral surface. *Zootaxa*, 4789 (2): 523-553. <https://doi.org/10.11646/zootaxa.4789.2.9>
- Monné M.A. & Monné M.L., 2014. – Synopsis of the genus *Pseudosparna* Mermudes & Monné (Coleoptera, Cerambycidae, Lamiinae), with description of two new species. *Zootaxa*, 3852 (5): 595-598. <http://dx.doi.org/10.11646/zootaxa.3852.5.9>
- Monné M.A. & Monné M.L., 2016. – Checklist of Cerambycidae (Coleoptera) primary types of the Museu Nacional, Rio de Janeiro, Brazil, with a brief history of the collection. *Zootaxa*, 4110 (1): 1 - 90. <http://doi.org/10.11646/zootaxa.4110.1.1>
- Nearns E.H., Swift I.P. & Santos-Silva A., 2023. – Three new species of longhorned beetles (Coleoptera: Cerambycidae) with notes on additional taxa. *Zootaxa*, 5228 (2): 137-156. <https://doi.org/10.11646/zootaxa.5228.2.3>
- Tavakilian G. L. & Santos-Silva A., 2019. – New Hemilophini, Aerenicini and Calliini from French Guiana, transference and notes on Hemilophini (Coleoptera, Cerambycidae, Lamiinae). *Zootaxa*, 4555 (4): 507-522. <https://doi.org/10.11646/zootaxa.4555.4.3>
- Vlasak J. & Santos-Silva A., 2022. – New Acanthocinini, notes and new records (Coleoptera: Cerambycidae, Lamiinae). *Faunitaxys*, 10 (54): 1 - 14.
- Wappes J.E. & Santos-Silva A., 2020. – Taxonomic Contributions to Neotropical Lamiinae (Coleoptera: Cerambycidae) including a new genus, five new species and a new synonym. *Insecta Mundi*, 769: 1 - 21.

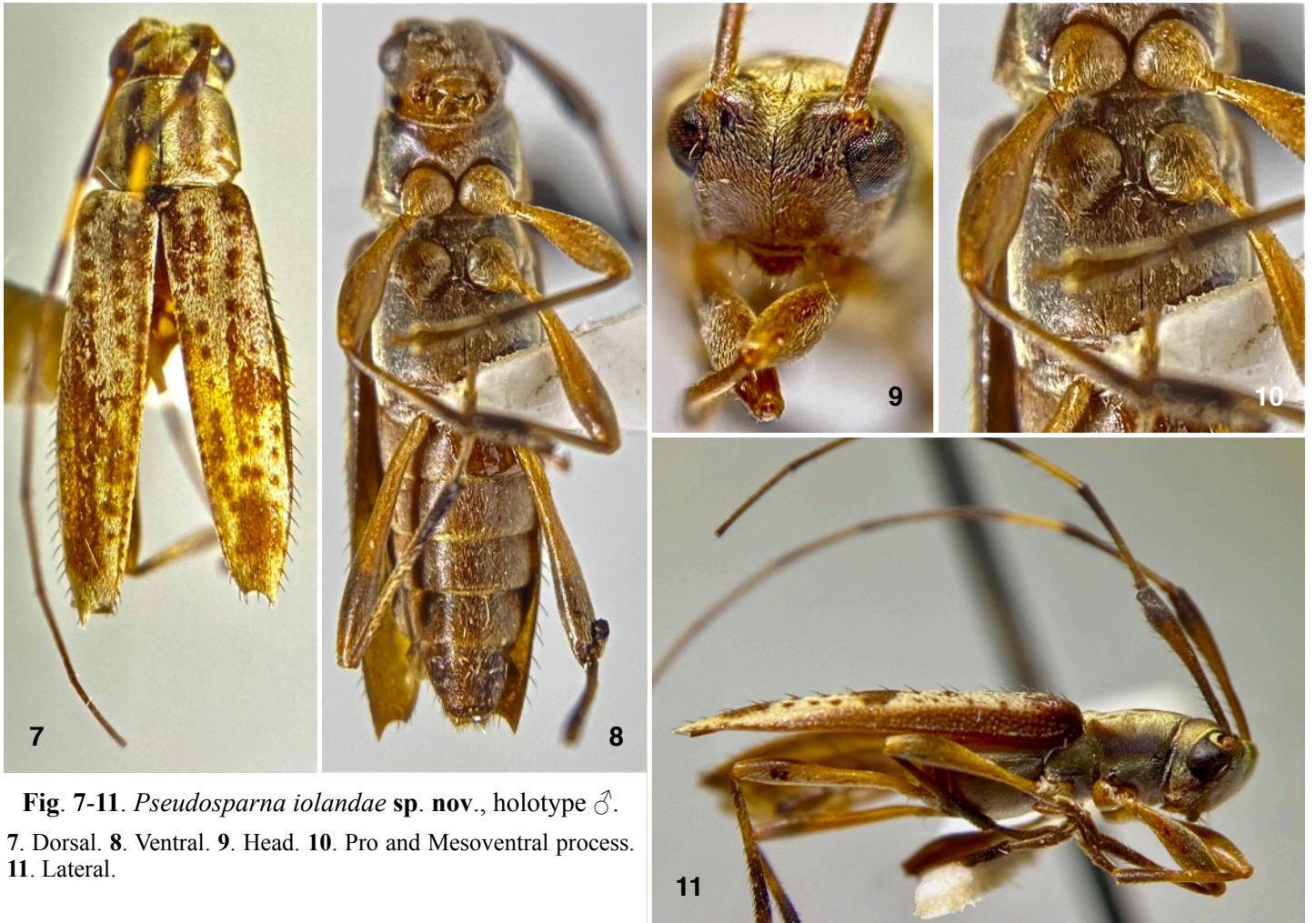


Fig. 7-11. *Pseudosparna iolandae* sp. nov., holotype ♂.
7. Dorsal. 8. Ventral. 9. Head. 10. Pro and Mesoventral process.
11. Lateral.

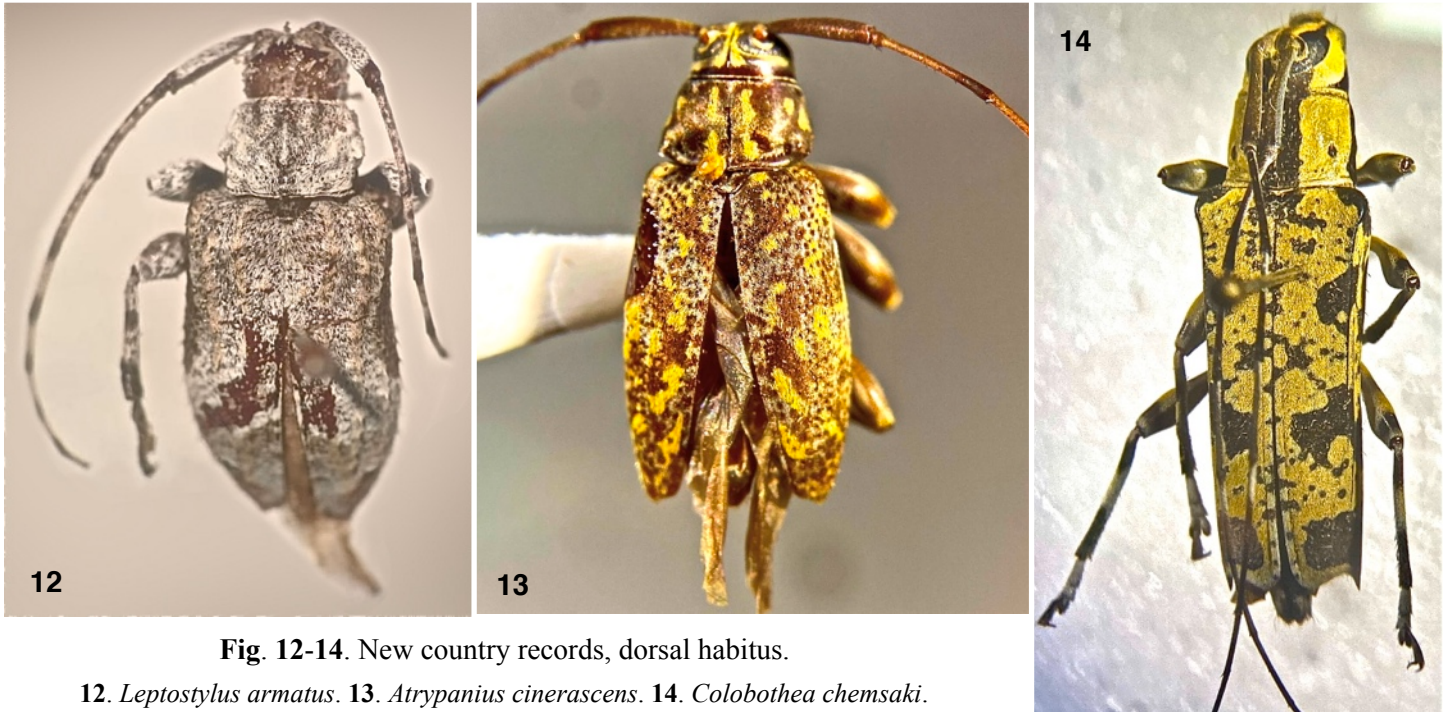


Fig. 12-14. New country records, dorsal habitus.

12. *Leptostylus armatus*. 13. *Atrypanius cinerascens*. 14. *Colobothea chemsaki*.

Résumé

Lanuzza-Garay A., 2023. – Nouveau genre, nouvelles espèces et nouvelles mentions de longicornes du Panama (Cerambycidae, Lamiinae). *Faunitaxys*, 11(25): 1 – 5.

Sphallopataroides gen. nov., *Sphallopataroides pirreanus* sp. nov., et *Pseudosparna iolandae* sp. nov. sont décrits du Panama. De nouvelles mentions nationales du Panama sont fournies: *Leptostylus armatus* Monné & Hoffmann, 1981; *Atrypanius cinerascens* (Bates, 1864); et *Colobothea chemsaki* Giesbert, 1979.

Mots-clés. – Cerambycidae, Lamiinae, Longhorned beetles, *Sphallopataroides*, *Pseudosparna*, *pirreanus*, *iolandae*, description, espèce nouvelle, taxonomie, nouvelles mentions, Panama.

Faunitaxys

Volume 11, Numéro 25, Mars 2023

SOMMAIRE

Nouveau genre, nouvelles espèces et nouvelles mentions de longicornes du Panama (Cerambycidae, Lamiinae).

Alfredo Lanuza-Garay 1 – 5

CONTENTS

A New Genus, New Species and New Country Records of Longhorned Beetles (Cerambycidae, Lamiinae) from Panama.

Alfredo Lanuza-Garay 1 – 5



Illustration de la couverture :

Le sapajou capucin (*Cebus capucinus*) est un singe de la famille des cébidés qui occupe pratiquement tous les types de forêt néotropicale d'amérique : forêts tropicales humides et sèches, forêts inondées, forêts de mangrove, forêts-galeries et forêts sèches à feuilles caduques. Sa répartition est étagée du niveau de la mer jusqu'à 2100 m d'altitude (Wolfheim 1983). Sa distribution géographique s'étend de l'extrême nord-ouest de l'Équateur jusqu'au Honduras, en passant par l'ouest de la Colombie, le Panama, le Costa Rica et le Nicaragua.

Crédits:

Alfredo Lanuza-Garay : Fig. 12-14.

Alonso Santos Murgas : Fig. 1-11