



HAL
open science

Risk of colorectal neoplasia according to histologic disease activity in patients with inflammatory bowel disease and colonic post-inflammatory polyps

Thomas Wolf, Ayanna Lewis, Laurent Beaugerie, Magali Svrcek, Julien Kirchgesner

► **To cite this version:**

Thomas Wolf, Ayanna Lewis, Laurent Beaugerie, Magali Svrcek, Julien Kirchgesner. Risk of colorectal neoplasia according to histologic disease activity in patients with inflammatory bowel disease and colonic post-inflammatory polyps. *Alimentary Pharmacology & Therapeutics (Suppl)*, 2023, 10.1111/apt.17495 . hal-04056363

HAL Id: hal-04056363

<https://hal.science/hal-04056363v1>

Submitted on 3 Apr 2023

HAL is a multi-disciplinary open access archive for the deposit and dissemination of scientific research documents, whether they are published or not. The documents may come from teaching and research institutions in France or abroad, or from public or private research centers.

L'archive ouverte pluridisciplinaire **HAL**, est destinée au dépôt et à la diffusion de documents scientifiques de niveau recherche, publiés ou non, émanant des établissements d'enseignement et de recherche français ou étrangers, des laboratoires publics ou privés.

Risk of colorectal neoplasia according to histologic disease activity in patients with inflammatory bowel disease and colonic post-inflammatory polyps

Thomas Wolf^{1,2,*}, Ayanna Lewis^{3,*}, Laurent Beaugerie^{1,4}, Magali Svrcek², Julien Kirchgesner^{1,4}, for the Saint-Antoine IBD Network

*Co-authorship

¹ Department of Gastroenterology, Hôpital Saint-Antoine, Assistance Publique-Hôpitaux de Paris, Paris, France.

² Department of Pathology, Hôpital Saint-Antoine, Assistance Publique-Hôpitaux de Paris, Paris, France.

³ Department of Medicine, Division of Gastroenterology, Mount Sinai South Nassau, Bellmore, NY

⁴ INSERM, Institut Pierre Louis d'Epidémiologie et de Santé Publique, Sorbonne Université, Paris, France.

Short Title: Post-inflammatory polyps and colonic neoplasia

Corresponding author:

Dr Julien Kirchgesner

Service de gastroentérologie et nutrition, Hôpital Saint-Antoine, Assistance Publique-Hôpitaux de Paris.

184 rue du Faubourg Saint-Antoine, Paris 75012.

Phone: +33 1 49 28 31 72

Fax: +33 1 49 28 31 88

E-mail: julien.kirchgesner@gmx.com

Word count : 2688

Acknowledgment

Funding: This work was not supported by dedicated funding.

Declaration of personal interests: Laurent Beaugerie has received consulting fees from BMS, Janssen, Nordic Pharma and Mylan; lecture fees from Abbvie, BMS, Janssen, MSD, Ferring, and Takeda; research support from Abbvie, Celltrion, Ferring Pharmaceuticals, Hospira-Pfizer, Janssen, MSD, Mylan, Takeda and Tillots. Julien Kirchgesner has received lecture fees from Janssen and consulting fees from Roche, Pfizer, and Gilead. The remaining authors disclose no conflicts.

Data Availability Statement: The data underlying this article are available in the article and in its online supplementary material.

Authorship

Guarantor of the article: Julien Kirchgesner

Contributed equally to this study: TW, AL. TW: Conceptualization (Supporting), Data curation (Equal), Formal analysis (Supporting), Writing – original draft (Equal); AL: Conceptualization (Supporting), Data curation (Equal), Formal analysis (Supporting), Methodology (Supporting), Writing – original draft (Equal); LB: Conceptualization (Equal), Formal analysis (Supporting), Methodology (Supporting), Writing – review & editing (Supporting); MS: Supervision (Equal), Conceptualization (Equal), Formal analysis (Equal), Writing – review & editing (Supporting); JK: Conceptualization (Equal), Formal analysis (Lead), Methodology (Lead), Supervision (Equal), Writing – review & editing (Supporting).

All authors approved the final version of the manuscript.

Members of the Saint Antoine IBD Network: Lionel ARRIVE, Laurent BEAUGERIE, Anne BOURRIER, Marine CAMUS, Najim CHAFAI, Edouard CHAMBENOIS, Ulriikka CHAPUT, Clotilde DEBOVE, Xavier DRAY, Nadia HOYEAU, Pauline IORO, Julien KIRCHGESNER, Cécilia LANDMAN, Marie LAZARETH, Jérémie H. LEFEVRE, Romain LEENHARDT, Paul McLELLAN, Laurence MONNIER-CHOLLEY, Isabelle NION-LARMURIER, Violaine OZENNE, Yann PARC, Laurène PARROT, Philippe SEKSIK, Harry SOKOL, Magali SVRCEK.

Abbreviations used in this paper:

CRN, colorectal neoplasia

PIPs, post-inflammatory polyps

Summary

Background & Aims: While post-inflammatory polyps (PIPs) have historically been a risk factor for colorectal neoplasia (CRN), histologic activity may explain this association. We aimed to assess the impact of histologic activity on CRN occurrence in IBD patients with colonic PIPs.

Methods: Patients with PIPs on surveillance colonoscopy at Saint-Antoine hospital between January 1st, 1996 and December 31st, 2020 were included and subsequent colonoscopies were assessed. Histologic IBD activity was assessed by the Nancy histologic index. Survival and Cox regression analysis were performed to assess the strength of the association of PIPs and other patient variables with progression to CRN.

Results: A total of 173 patients with at least two surveillance colonoscopies with PIPs at index colonoscopy were compared to a similar group of 252 patients without PIPs. In survival analysis, the presence of PIPs at index colonoscopy did not impact the risk of CRN in patients with histological inflammation (p-value, 0.83) and in patients without histological inflammation (p-value, 0.98). The risk of CRN was associated with increasing Nancy index score of 3 or 4 (HR: 4.16; CI95% 1.50 – 11.52 and HR: 3.44; CI95% 1.63 – 7.24), age (HR per 10-year increase: 1.37; CI95% 1.13 – 1.66) and first-degree family history of colorectal cancer (HR: 5.87; CI95% 1.31 – 26.26), but not PIPs (HR: 1.17; CI95% 0.63 – 2.17).

Conclusions: After controlling for histologic activity, PIPs do not increase the risk of CRN in IBD patients. Histologic activity rather than PIPs should be considered in the risk assessment of CRN.

Keywords: inflammatory bowel disease post-inflammatory polyps; colorectal neoplasia.

Introduction

Patients with colonic inflammatory bowel diseases (IBD) have an increased risk for colorectal neoplasia (CRN) after seven to ten years of disease evolution.¹ This risk is stratified into high, moderate and low risk categories by current guidelines, corresponding to endoscopic surveillance intervals of one to five years.² The risk is mainly related to the occurrence of primary sclerosing cholangitis, personal history of CRN or first-degree familial history, IBD disease extent or histologic disease activity. As a feature of chronic inflammation, presence of post-inflammatory polyps (PIPs) also known as “pseudopolyps”, was historically considered as a risk factor for neoplasia but these initial findings were followed by studies concluding to the absence of increased risk.^{3,4} Recently, in a large retrospective cohort, PIPs were not associated with a higher risk of CRN.⁵ In this study, histologic disease activity was not assessed, while histologic disease activity assessed by the Nancy histologic index has been associated with an increased risk of CRN and should be considered in the neoplasia screening strategy.⁶ The first association observed between the presence of PIPs and the risk of colonic neoplasia may be explained by concomitant histologic disease activity, but the risk of colonic neoplasia in patients with PIPs according to histologic disease activity is unknown. Clarifying the impact of PIPs on colorectal neoplasia considering histological inflammation could help to guide the risk stratification in patients with PIPs. In this study, we aimed to assess the impact of histologic activity on CRN occurrence in IBD patients with colonic PIPs and to confirm the lack of influence of PIPs on CRN development.

Methods

Patients

This retrospective study included patients from one French tertiary center, Saint-Antoine Hospital. Eligible patients underwent at least one colonoscopy between January 1st, 1996 and December 31st, 2020 in Saint-Antoine Hospital. Included patients were men and women aged of 18 years old or more, with an IBD, and among whom PIPs were identified at surveillance colonoscopy. Patients with Crohn's disease (CD) and ulcerative colitis (UC) were pooled since the risk of CRN appears to be the same in CD and UC after adjustment for extent of colitis and disease duration.⁷⁻⁹ Patients with a past history of CRN or colectomy and patients with a follow up shorter than six months or only one colonoscopy were excluded.

Every patient with an IBD for eight to ten years is eligible for CRN screening in our center. Two biopsies at least are performed for each segment associated with targeted biopsies. Patients were enrolled from the date of the first colonoscopy at St-Antoine's Hospital in the period between January 1st, 1996 and December 31st, 2020. Entry dates were defined as the date of the first colonoscopy in St-Antoine without CRN. They were followed up until occurrence of low grade or high-grade dysplasia or colorectal cancer, colectomy or death.

Data collection

Variables were collected from the SUiVi Intégré soins-recherche des Maladies Inflammatoires Chroniques intestinales registry (a prospective clinical database of all patients with IBD evaluated by Saint-Antoine Hospital digestive disease medical staff), endoscopic and medical records, and the Saint-Antoine Hospital's Pathology Department database. For each patient, following data were recorded: date of birth, sex, IBD type (UC or CD, considering indeterminate colitis in the UC group), disease duration, colonic extent (pancolitis, extensive colitis involving $\geq 50\%$ of the colon, non-extensive colitis involving $< 50\%$ of the colon),

presence of PSC, familial history of colorectal cancer at first degree. Current treatment within 6 months was also assessed between methotrexate, mesalamine, thiopurines, and biologics. At each follow-up colonoscopy, presence of PIPs including numbers and location, and endoscopic disease activity based on the presence of ulcerations were assessed. Histologic disease activity was also assessed according to the Nancy histologic index: ulceration, mild to severe acute inflammation and mild to severe chronic inflammation.¹⁰

Outcome

Primary outcome was the occurrence of any colonic neoplasia (low grade dysplasia, high grade dysplasia, or colorectal cancer, or lesions indefinite for dysplasia. CRN was defined according to Vienna classification (no dysplasia, indefinite for dysplasia, low grade dysplasia, high grade dysplasia or adenocarcinoma).¹¹ If several neoplastic lesions were identified during the same procedure, the most severe lesion was included for the analysis. Lesions were classified as endoscopically visible and nonvisible lesions¹² and localisation was assessed. Diagnosis and classification of dysplasia were confirmed by a second expert gastrointestinal pathologist.¹³ In cases of lesion indefinite for dysplasia, p53 immunohistochemistry was performed to discriminate between regenerative changes and intraepithelial dysplasia.¹⁴

Statistical analysis

Continuous data are expressed as means (SD), and differences between groups were tested for significance by the Student t test or the Wilcoxon test if appropriate. Discrete data are provided as percentages, and comparisons were made with the Pearson chi-square test or the Fisher test if appropriate. We considered differences to be statistically significant when the P value was less than .05 (all tests were 2-sided).

Cohort of patients without PIPs

In order to assess the impact of histologic IBD activity according to the presence of PIPs, we assembled a cohort of patients without PIPs based on a previous study.⁶ Briefly, this study assessed the impact of histologic disease activity on the risk of CRN in patients with IBD who underwent at least two colonoscopies at Saint-Antoine Hospital between January 1, 1996, and March 1, 2015, and whose first procedure was a surveillance colonoscopy. The Nancy histologic index was assessed for each colonoscopy, as well as the presence of ulcerations.

Impact of PIPs on the risk of neoplasia

Survival without CRN was assessed in the patients with and without PIPs, according to the presence of histologic activity based on Nancy index score greater than one and the presence of endoscopic disease activity based on the presence of ulcerations.

Cox regression analysis was used to assess the relationship of clinical, endoscopic, and histologic variables to the risk of CRN. Variables significant at a P value less than .20 were entered into a multivariate Cox regression analysis to assess the strength of the associations while controlling for possible confounding variables. The occurrence of PIPs was a priori included in the multivariate Cox model. Additionally, a secondary analysis stratified according to the IBD subtype was performed. We also performed several sensitivity analyses. First, we excluded patients with lesion indefinite for dysplasia. Second, we restricted the analysis to patients included after 2007, as the time scale of the inclusion period was long and includes changes in endoscopy techniques that could impact lesion visualization. Lastly, we adjusted for the mean Nancy histologic index during follow-up to assess how the inclusion of chronic histological inflammation could impact the findings.

Statistical analyses were performed using SAS software V.9.4 (SAS, Cary, North Carolina, USA). The use of the Saint-Antoine hospital database for the purpose of observational studies

has been authorised by the French data protection agency (Commission Nationale Informatique et Liberté) decision DR-2016-373 on 5 September 2016.

Results

A total of 200 patients were identified who met the criteria of having at least two surveillance colonoscopies between January 1st, 1996 and December 31st, 2020 with PIPs at index colonoscopy. Of those 200 patients, 18 patients with a previous history of colonic neoplasia were excluded. An additional 9 patients were excluded for having a follow-up of less than six months. In total, 173 patients with at least two surveillance colonoscopies and a history of PIPs at the index colonoscopy were identified. Overall, 89.5 % (n=154) of patients had more than one PIP on the index colonoscopy and 63% (n=109) had many PIPs (more than 5 PIPs). PIPs were mainly located in the left colon and sigmoid (71.7% of patients, n=124).

A comparison group of 252 patients without PIPs and at least two surveillance colonoscopies was also identified. Patient characteristics at cohort entry are shown in Table 1. Patients with PIPs at index colonoscopy did not differ substantially from patients who did not have PIPs at index colonoscopy with regards to age at cohort entry, IBD diagnosis, IBD duration or disease extent. In the domain of gender there appeared to be an increased proportion of males with PIPs compared to those without PIPs. Patients with and without PIPs were followed during a mean time of 4.8 (SD 2.9) and 5.5 (SD 3.3) years, respectively.

Direct comparison of patients with and without CRN shows that patients who had CRN tended to have higher Nancy index scores at baseline colonoscopy with 44.6% of patients with Nancy score of 4 in the CRN group compared to 24.7% in the group without CRN (Supplementary Table 1). Among patients with PIPs, 55% of neoplastic lesions were identified in a colonic area where PIPs were also identified.

In survival analysis, the presence or PIPs at index colonoscopy did not impact the risk of CRN in patients with histological inflammation (p-value, 0.83) and in patients without histological inflammation (p-value, 0.98). The risk of CRN in patients with PIPs and no histological inflammation closely mirrored those of patients without PIPs and without histological inflammation at the index colonoscopy (Figure 2). However, patients without PIPs who had histological inflammation at the index colonoscopy were more likely to develop CRN on subsequent surveillance colonoscopies compared to patients without PIPs and without histological inflammation (p-value, 0.01), and a similar trend was observed in patients with PIPs although not statistically significant (p-value, 0.08). A similar stratification of patients with and without PIPs using presence or absence of endoscopic ulceration did not show a statistical difference in terms of survival without CRN (Figure 3).

By univariate analysis, elevation of Nancy score into 3 (HR: 3.82 ; CI95% 1.43 – 10.24 ; p value 0.02) or 4 (HR: 3.13 ; CI 95% 1.57 – 6.24 ; p value 0.02), and age at cohort entry (HR: 1.31 ; CI 95% 1.09 – 1.58, p value <0.01, per 10-years increase) were associated with occurrence of colorectal cancer. The analysis of other variables showed trends but no statistically significant difference. (Table 2)

The Cox multivariate analysis did not show any statistically significant difference in terms of risk for progression to CRN for patients who had PIPs compared to patients who did not (HR: 1.17 ; CI 95% 0.63 – 2.17 ; p value 0.61) (Table 3). However, there did appear to be a statistically significant difference in the multivariate analysis for risk of development of CRN based on increasing Nancy index score into Nancy score 3 (HR: 4.16 ; CI 95% 1.50 – 11.52 ; p value <0.01) or 4 (HR: 3.44 ; CI 95% 1.63 – 7.24 ; p value: <0.01), age at entry (HR: 1.37 ; CI 95% 1.13 – 1.66 ; p value <0.01), and presence of colorectal cancer in a first degree relative (HR: 5.87 ; CI 95% 1.31 – 26.26 ; p value 0.02). Use of anti-TNF therapy at cohort entry had a trend towards reduction in CRN but did not reach statistical significance (HR: 0.55 ; CI 95%

0.21 – 1.45 ; p value 0.22). Secondary and sensitivity analyses were consistent with the main analysis (Supplementary Table 2).

Discussion

Our study shows that the presence of PIPs was not associated with an increased risk of CRN in patients with IBD undergoing surveillance colonoscopy when adjusting for the presence of histological inflammation. This study used a validated histologic activity index in UC to assess histologic disease activity.

Historically, PIPs were thought to be an important risk factor for CRN. A 2006 case control study listed a history of PIPs among one of the most important factors associated with colorectal cancer (OR, 2.5; 95% CI: 1.4–4.6).¹⁵ Later, another case control study showed that compared to controls, the risk of IBD-related colorectal cancer in patients with PIPs was elevated (RR, 1.92; 95% CI 1.28–2.88).¹⁶ A recent meta-analysis reported that PIPs were considered as a risk factor of advanced CRN with moderate evidence.⁴ However, a 2019 multicentric study showed that during a median follow-up period of 4.8 years, the time until development of advanced CRN did not differ significantly between patients with PIPs and those without PIPs. Further, PIPs did not independently increase the risk of advanced CRN (adjusted hazard ratio 1.17; 95% CI 0.59-2.31).⁵

After careful analysis of our data, it appears that PIPs may not significantly increase the risk of progression to CRN. After stratifying patients with and without PIPs, what appeared to differentiate which patients would go on to develop CRN was the amount of histological inflammation present as scored by the Nancy index. PIPs may be rather a surrogate marker of previous disease severity. Interestingly, a recent study with 504 patients with IBD did show that a high PIPs burden was associated with treatment escalation, hospitalisation and need for surgery.¹⁷

This study also serves to underscore the importance of histologic inflammation when it comes to the risk of development of CRN over endoscopic appearance. Stratification by the presence or absence of endoscopic ulceration did not appear to show any statistically significant difference in risk of progression. However, increasing histologic features of inflammation as scored using the Nancy index, showed a clear association with subsequent development of CRN. In addition, the data appears to have good external validity as the other variables that were assessed in the multivariate analysis appear to match current known risk factors for CRN such as presence of PSC and presence of colorectal cancer in a first degree relative.¹ We also observed a trend for a protective effect associated with anti-TNFs exposure, as it has been recently reported.¹⁸

However, our study is not without limitations. Despite the advantage of our extended follow up time, the data was limited to a single center in Paris, France which raises questions about generalizability to more diverse populations. Further, this was a retrospective analysis of a prospectively collected cohort with the inherent limitations with regards to data collection. Data collection was based on the same database but inclusion period and follow-up were extended until 2020 in patients with PIPs in order to increase the sample size of the study. However, the duration of follow-up was very close between groups. Endoscopic disease activity was only based on ulcerations. The presence of ulcerations may not detect mild disease activity, but ulcerations items are widely included in endoscopic disease activity scores.¹⁹ Additionally, histologic disease activity may be a more precise and accurate measure of inflammation compared to endoscopic disease activity for the assessment of the risk of colorectal neoplasia, as 20 to 30% of patients with UC have histologic disease activity on colonic biopsies while considered in endoscopical remission based on the Mayo score.²⁰ Lastly, family history of CRC (first-degree relative) was assessed but age of the diagnosis of cancer was not collected.

Large field of PIPs may prevent assessment of neoplasia but the growing use of artificial intelligence may also be an opportunity to further differentiate neoplasia in the colon even in the presence of dense PIPs. New technology that incorporates artificial intelligence appears to demonstrate an independent increase in adenoma detection rate for routine colonoscopy.²¹ There has also been attempts to develop novel deep learning–based scoring systems and other artificial intelligence tools to evaluate endoscopic images from patients with IBD which can also accurately describe the severity and distribution of inflammatory activity as well as presence of polypoid lesions.

We observed that PIPs alone do not independently increase risk for CRN. Although previous studies did show an association with the presence of PIPs with progression to CRN, this association may have been due to a limited ability to distinguish between PIPs with underlying histological inflammation and PIPs without it. While PIPs may make it more difficult and time consuming to survey the colon in patients with inflammatory bowel disease, thus necessitating careful colonoscopy, our findings suggest that PIPs are not independent risk factors for CRN. We believe it is the presence or absence of histologic inflammation in the colon, with or without PIPs, that ultimately matters when it comes to risk of progression to CRN. Therefore, routine utilisation of the Nancy index in pathologic assessment of IBD patients may give more information about patients' risk for development of dysplasia. It is for these reasons that we believe our study adds support to the need for a change in the paradigm with regards to PIPs in IBD surveillance.

References

1. Beaugerie L, Itzkowitz S. Cancers Complicating Inflammatory Bowel Disease. *New England Journal of Medicine*. 2015;372(15):1441-1452. doi:10.1056/NEJMra1403718
2. Annese V, Daperno M, Rutter MD, et al. European evidence based consensus for endoscopy in inflammatory bowel disease. *J Crohns Colitis*. 2013;7(12):982-1018. doi:10.1016/j.crohns.2013.09.016
3. de Jong ME, Gillis VELM, Derikx LAAP, Hoentjen F. No Increased Risk of Colorectal Neoplasia in Patients With Inflammatory Bowel Disease and Postinflammatory Polyps. *Inflamm Bowel Dis*. 2020;26(9):1383-1389. doi:10.1093/ibd/izz261
4. Wijnands AM, de Jong ME, Lutgens MWMD, Hoentjen F, Elias SG, Oldenburg B. Prognostic Factors for Advanced Colorectal Neoplasia in Inflammatory Bowel Disease: Systematic Review and Meta-analysis. *Gastroenterology*. 2021;160(5):1584-1598. doi:10.1053/j.gastro.2020.12.036
5. Mahmoud R, Shah SC, Ten Hove JR, et al. No Association Between Pseudopolyps and Colorectal Neoplasia in Patients With Inflammatory Bowel Diseases. *Gastroenterology*. 2019;156(5):1333-1344.e3. doi:10.1053/j.gastro.2018.11.067
6. Kirchgerner J, Svrcek M, Le Gall G, et al. Nancy Index Scores of Chronic Inflammatory Bowel Disease Activity Associate With Development of Colorectal Neoplasia. *Clinical Gastroenterology and Hepatology*. 2020;18(1):150-157.e1. doi:10.1016/j.cgh.2019.05.002
7. Munkholm P. Review article: the incidence and prevalence of colorectal cancer in inflammatory bowel disease. *Aliment Pharmacol Ther*. 2003;18 Suppl 2:1-5.
8. Svrcek M, Cosnes J, Beaugerie L, et al. Colorectal neoplasia in Crohn's colitis: a retrospective comparative study with ulcerative colitis. *Histopathology*. 2007;50(5):574-583. doi:10.1111/j.1365-2559.2007.02663.x
9. Beaugerie L, Svrcek M, Seksik P, et al. Risk of colorectal high-grade dysplasia and cancer in a prospective observational cohort of patients with inflammatory bowel disease. *Gastroenterology*. 2013;145(1):166-175.e8. doi:10.1053/j.gastro.2013.03.044
10. Marchal-Bressenot A, Salleron J, Boulagnon-Rombi C, et al. Development and validation of the Nancy histological index for UC. *Gut*. 2017;66(1):43-49. doi:10.1136/gutjnl-2015-310187
11. Schlemper RJ, Riddell RH, Kato Y, et al. The Vienna classification of gastrointestinal epithelial neoplasia. *Gut*. 2000;47(2):251-255.
12. Laine L, Kaltenbach T, Barkun A, McQuaid KR, Subramanian V, Soetikno R. SCENIC International Consensus Statement on Surveillance and Management of Dysplasia in Inflammatory Bowel Disease. *Gastroenterology*. 2015;148(3):639-651.e28. doi:10.1053/j.gastro.2015.01.031

13. Magro F, Langner C, Driessen A, et al. European consensus on the histopathology of inflammatory bowel disease. *Journal of Crohn's and Colitis*. 2013;7(10):827-851. doi:10.1016/j.crohns.2013.06.001
14. Lu X, Yu Y, Tan S. p53 expression in patients with ulcerative colitis - associated with dysplasia and carcinoma: a systematic meta-analysis. *BMC Gastroenterol*. 2017;17(1):1-8. doi:10.1186/s12876-017-0665-y
15. Velayos FS, Loftus EV, Jess T, et al. Predictive and Protective Factors Associated With Colorectal Cancer in Ulcerative Colitis: A Case-Control Study. *Gastroenterology*. 2006;130(7):1941-1949. doi:10.1053/j.gastro.2006.03.028
16. Baars JE, Looman CW, Steyerberg EW, et al. The risk of inflammatory bowel disease-related colorectal carcinoma is limited: results from a nationwide nested case-control study. *The American journal of gastroenterology*. 2010;106(2):319-328.
17. Ellul P, Schembri J, Baldacchino VA, et al. Post-inflammatory polyps burden as a prognostic marker of disease-outcome in patients with inflammatory bowel disease. *Journal of Crohn's and Colitis*. Published online November 2, 2022;jjac169. doi:10.1093/ecco-jcc/jjac169
18. Charkaoui M, Hajage D, Tubach F, Beaugerie L, Kirchgessner J. Impact of Anti-tumour Necrosis Factor Agents on the Risk of Colorectal Cancer in Patients with Ulcerative Colitis: Nationwide French Cohort Study. *J Crohns Colitis*. 2022;16(6):893-899. doi:10.1093/ecco-jcc/jjab184
19. Sturm A, Maaser C, Calabrese E, et al. ECCO-ESGAR Guideline for Diagnostic Assessment in IBD Part 2: IBD scores and general principles and technical aspects. *Journal of Crohn's and Colitis*. 2019;13(3):273-284. doi:10.1093/ecco-jcc/jjy114
20. Magro F, Lopes J, Borralho P, et al. Comparison of different histological indexes in the assessment of UC activity and their accuracy regarding endoscopic outcomes and faecal calprotectin levels. *Gut*. 2019;68(4):594-603. doi:10.1136/gutjnl-2017-315545
21. Hassan C, Spadaccini M, Iannone A, et al. Performance of artificial intelligence in colonoscopy for adenoma and polyp detection: a systematic review and meta-analysis. *Gastrointest Endosc*. 2021;93(1):77-85.e6. doi:10.1016/j.gie.2020.06.059

Table 1. Patient characteristics at cohort entry

	No PIPs (n=252)	PIPs (n=173)	All (n=425)
Sex			
Female	105 (41.7)	95 (54.9)	200 (47.1)
Male	147 (58.3)	78 (45.1)	225 (52.9)
Age at cohort entry, year	40.9 (13.6)	40.1 (13.5)	40.6 (13.5)
IBD type			
Ulcerative colitis	99 (39.3)	78 (45.1)	177 (41.6)
Crohn's disease	153 (60.7)	95 (54.9)	248 (58.4)
IBD duration, year	14.5 (8.4)	12.0 (7.5)	13.5 (8.1)
Disease extension			
Non-extensive colitis	35 (13.9)	25 (14.5)	60 (14.1)
Extensive colitis	99 (39.3)	58 (33.5)	157 (37.0)
Pancolitis	118 (46.8)	90 (52.0)	208 (48.9)
Primary sclerosing cholangitis	39 (15.5)	10 (5.8)	49 (11.5)
Family history of CRC, first-degree relative	4 (1.6)	6 (3.5)	10 (2.4)
Treatment exposure at cohort entry			
Aminosalicylates	123 (48.8)	84 (48.6)	207 (48.7)
Azathioprine	100 (39.7)	70 (40.5)	170 (40.0)
Methotrexate	16 (6.3)	18 (10.4)	34 (8.0)
Anti-TNF	40 (15.9)	64 (37.0)	104 (24.5)
Nancy histological index			
0	116 (46.0)	65 (37.6)	181 (42.6)
1	34 (13.5)	16 (9.2)	50 (11.8)
2	14 (5.6)	31 (17.9)	45 (10.6)
3	23 (9.1)	10 (5.8)	33 (7.7)
4	65 (25.8)	51 (29.5)	116 (27.3)
Presence of endoscopical ulcerations	122 (48.4)	78 (45.1)	200 (47.1)

Results are expressed as mean (standard deviation) or number (%)

Table 2. Risk Factors of colorectal neoplasia: Univariate Analysis

	Hazard ratio (CI 95%)	p value
Age †	1.31 (1.09 - 1.58)	<0.01
Male sex	0.61 (0.36 - 1.04)	0.07
Family history of CRC, first-degree relative	2.71 (0.65 - 11.22)	0.17
IBD phenotype, Crohn's disease	0.83 (0.49 - 1.40)	0.48
IBD duration †	1.12 (0.82 - 1.53)	0.48
Disease extension		
Nonextensive colitis	Ref	
Extensive colitis	0.63 (0.29 - 1.35)	0.28
Pancolitis	0.55 (0.26 - 1.14)	
Primary sclerosing cholangitis	1.86 (0.94 - 3.69)	0.08
Post-inflammatory polyps	1.04 (0.60 - 1.80)	0.89
Treatment exposure at cohort entry		
Aminosalicylates	0.66 (0.39 - 1.13)	0.13
Azathioprine	0.94 (0.55 - 1.63)	0.84
Methotrexate	1.24 (0.49 - 3.13)	0.65
Anti-TNFs	0.50 (0.20 - 1.27)	0.15
Nancy histological index		
0	Ref	
1	2.16 (0.88 - 5.33)	
2	2.24 (0.78 - 6.38)	0.02
3	3.82 (1.43 - 10.24)	
4	3.13 (1.57 - 6.24)	
Endoscopical ulcerations	1.41 (0.83 - 2.40)	0.21

† per ten years increase

Table 3. Risk Factors of colorectal neoplasia: Multivariate Analysis

	Hazard ratio (CI 95%)	p value
Age †	1.37 (1.13 - 1.66)	<0.01
Male sex	0.66 (0.38 - 1.16)	0.15
Family history of CRC, first-degree relative	5.87 (1.31 - 26.26)	0.02
Primary sclerosing cholangitis	2.15 (0.99 - 4.62)	0.05
Post-inflammatory polyps	1.17 (0.63 - 2.17)	0.63
Treatment exposure at cohort entry		
Aminosalicylates	0.71 (0.40 - 1.26)	0.24
Anti-TNF	0.55 (0.21 - 1.45)	0.22
Nancy histological index		
0	Ref	
1	1.83 (0.69 - 4.86)	
2	2.49 (0.84 - 7.45)	<0.01
3	4.16 (1.50 - 11.52)	
4	3.44 (1.63 - 7.24)	

† per ten years increase

Figures

Figure 1. Patient flow-chart

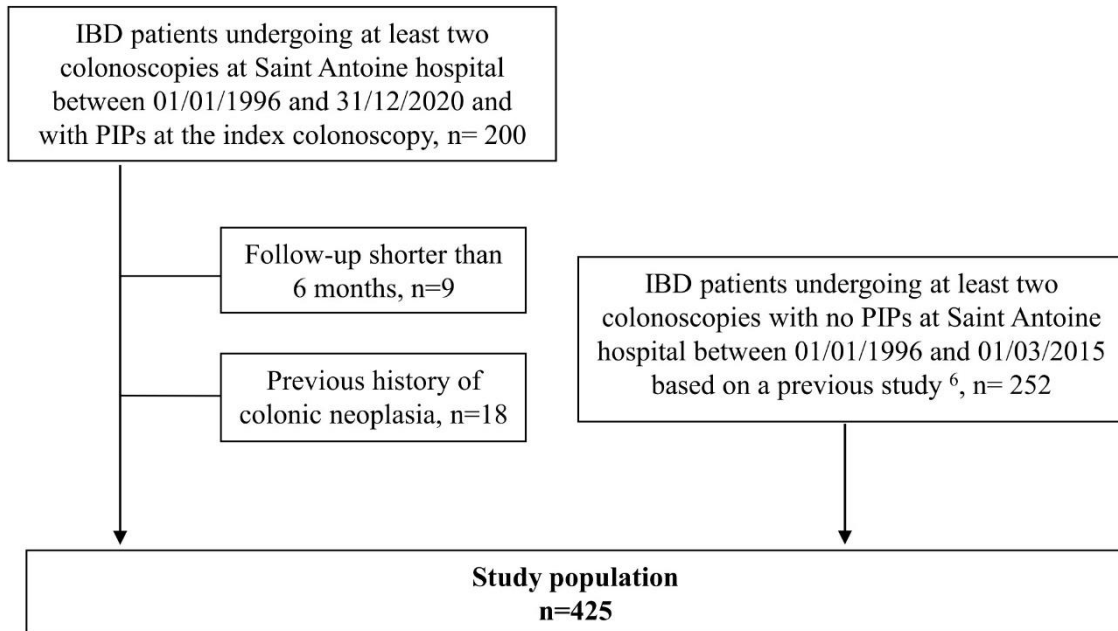


Figure 2. Survival without colorectal neoplasia according to the presence of PIPs and histological inflammation based on the Nancy score at the index colonoscopy

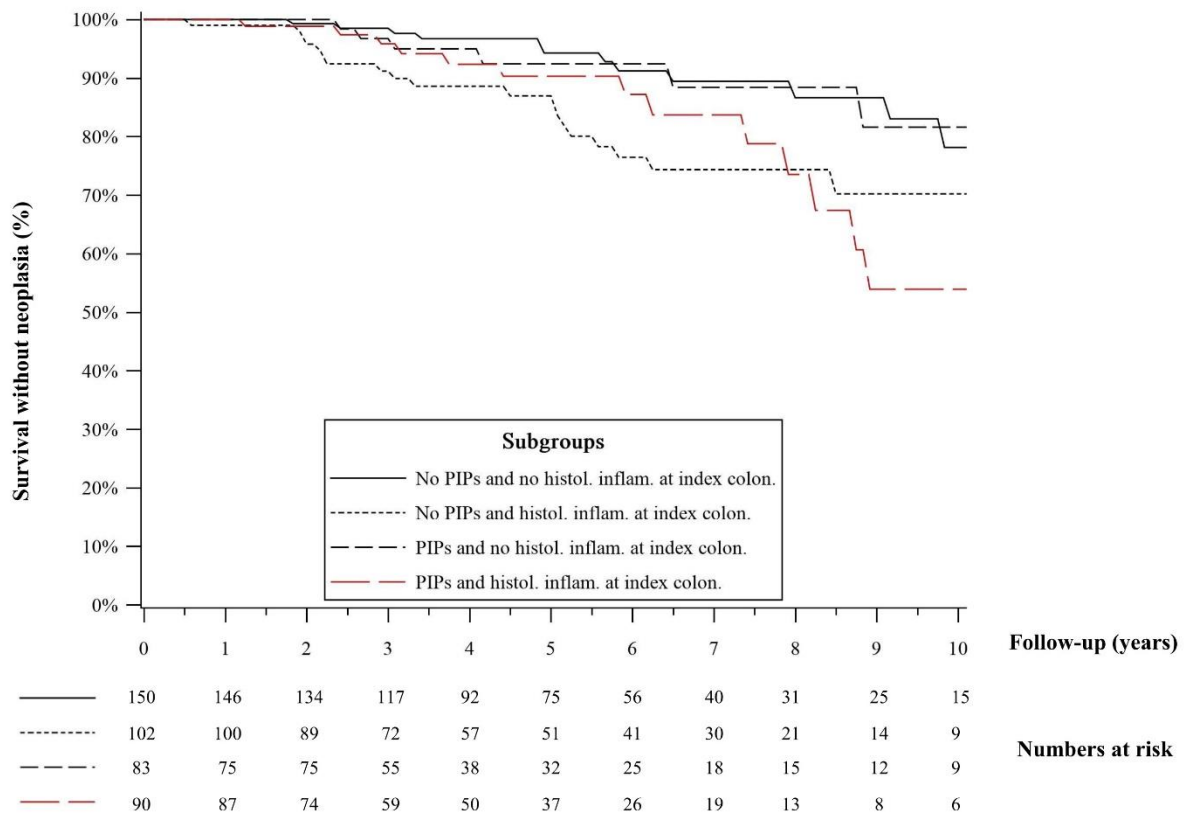
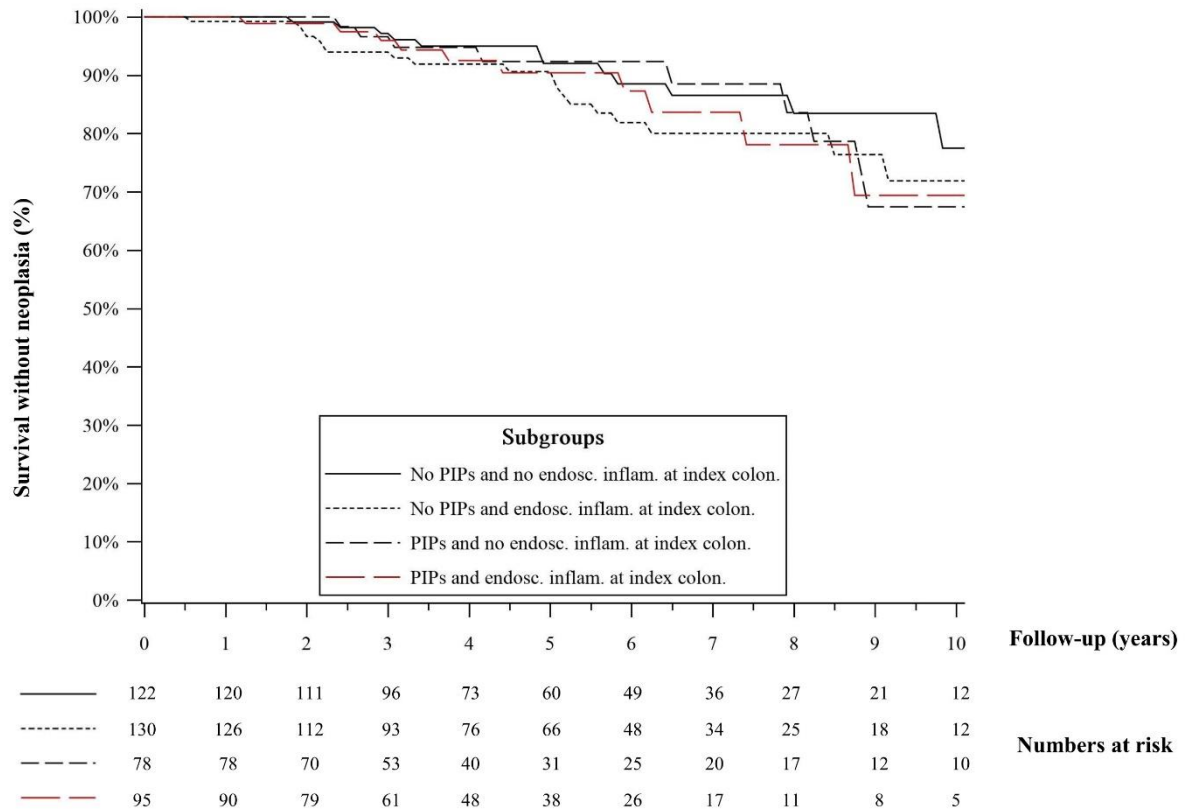


Figure 3. Survival without colorectal neoplasia according to the presence of PIPs and endoscopic inflammation based on the presence of ulcerations at the index colonoscopy



SUPPLEMENTARY MATERIAL

Supplementary Table 1. Patient characteristics at cohort entry according to the occurrence of colorectal neoplasia during follow up

Supplementary Table 2: Association between PIPs and Colorectal Neoplasia: Sensitivity analysis

Supplementary Table 1. Patient characteristics at cohort entry according to the occurrence of colorectal neoplasia during follow up

	No neoplasia n = 369	Neoplasia n = 56	All n = 425
Sex			
Female	167 (45.3)	33 (58.9)	200 (47.1)
Male	202 (54.7)	23 (41.1)	225 (52.9)
Age at cohort entry, year	40.0 (13.4)	44.7 (13.9)	40.6 (13.5)
IBD type			
Ulcerative colitis	151 (40.9)	26 (46.4)	177 (41.6)
Crohn's disease	218 (59.1)	30 (53.6)	248 (58.4)
IBD duration, year	13.3 (7.7)	14.8 (10.6)	13.5 (8.1)
Disease extension			
Non-extensive colitis	50 (13.6)	10 (17.9)	60 (14.1)
Extensive colitis	137 (37.1)	20 (35.7)	157 (37.0)
Pancolitis	182 (49.3)	26 (46.4)	208 (48.9)
Primary sclerosing cholangitis	39 (10.6)	10 (17.9)	49 (11.5)
Family history of CRC, first-degree relative	8 (2.2)	2 (3.6)	10 (2.4)
Treatment exposure at cohort entry			
Aminosalicylates	183 (49.6)	24 (42.9)	207 (48.7)
Azathioprine	150 (40.7)	20 (35.7)	170 (40.0)
Methotrexate	29 (7.9)	5 (8.9)	34 (8.0)
Anti-TNF	99 (26.8)	5 (8.9)	104 (24.5)
Nancy histological index			
0	169 (45.8)	12 (21.4)	181 (42.6)
1	42 (11.4)	8 (14.3)	50 (11.8)
2	40 (10.8)	5 (8.9)	45 (10.6)
3	27 (7.3)	6 (10.7)	33 (7.7)
4	91 (24.7)	25 (44.7)	116 (27.3)
Presence of endoscopical ulcerations	192 (52.0)	33 (58.9)	225 (52.9)
Neoplasia type			
Carcinoma	-	7 (12.5)	-
High grade dysplasia	-	4 (7.1)	-
Indefinite for dysplasia	-	6 (10.7)	-
Low grade dysplasia	-	39 (69.7)	-
Neoplasia non visible	-	21 (37.5)	-

Results are expressed as mean (standard deviation) or number (%)

Supplementary Table 2. Association between PIPs and Colorectal Neoplasia: Sensitivity analysis

	Hazard ratio (CI 95%)	p value
Stratification according to IBD subtype		
Crohn's disease	1.23 (0.54 - 2.79)	0.63
Ulcerative colitis	0.60 (0.23 - 1.55)	0.29
Exclusion of patients with lesion indefinite for dysplasia	1.21 (0.65 - 2.26)	0.58
Restricted to patients included after 2007	0.71 (0.27-1.90)	0.50
Adjusted for mean Nancy index	1.11 (0.61-2.02)	0.73
Adjusted for sex, age, family history of CRC, primary sclerosing cholangitis, aminosalicylates and anti-TNFs exposure, and Nancy histological index		