



**HAL**  
open science

## Microrheology and structural quantification of hypercoagulable clots

Laura Wolff-Trombini, Adrien Ceripa, Julien Moreau, Hubert Galinat, Chloé James, Nathalie Westbrook, Jean-Marc Allain

► **To cite this version:**

Laura Wolff-Trombini, Adrien Ceripa, Julien Moreau, Hubert Galinat, Chloé James, et al.. Microrheology and structural quantification of hypercoagulable clots. *Biomedical optics express*, 2023, 14 (8), pp.4179-4189. 10.1364/BOE.492669 . hal-04054272v2

**HAL Id: hal-04054272**

**<https://hal.science/hal-04054272v2>**

Submitted on 6 Jul 2023

**HAL** is a multi-disciplinary open access archive for the deposit and dissemination of scientific research documents, whether they are published or not. The documents may come from teaching and research institutions in France or abroad, or from public or private research centers.

L'archive ouverte pluridisciplinaire **HAL**, est destinée au dépôt et à la diffusion de documents scientifiques de niveau recherche, publiés ou non, émanant des établissements d'enseignement et de recherche français ou étrangers, des laboratoires publics ou privés.

# Microrheology and structural quantification of hypercoagulable clots

Laura Wolff-Trombini,<sup>1</sup> Adrien Ceripa,<sup>2,3</sup> Julien Moreau,<sup>4</sup> Hubert Galinat,<sup>5</sup> Chloe James,<sup>1,6</sup> Nathalie Westbrook,<sup>4</sup> and Jean-Marc Allain<sup>2,3,\*</sup>

<sup>1</sup>Université de Bordeaux, UMR1034, Inserm, Biology of Cardiovascular Diseases, Pessac, France

<sup>2</sup>LMS, CNRS, Ecole Polytechnique, Institut Polytechnique de Paris, Palaiseau, France

<sup>3</sup>Inria, Palaiseau, France

<sup>4</sup>Université Paris-Saclay, Institut d'Optique Graduate School, CNRS, Laboratoire Charles Fabry, Palaiseau, France

<sup>5</sup>CHU de Brest, Service d'Hématologie Biologique, Brest, France

<sup>6</sup>CHU de Bordeaux, Laboratoire d'Hématologie, Pessac, France

\*[jean-marc.allain@polytechnique.edu](mailto:jean-marc.allain@polytechnique.edu)

## Abstract

Hypercoagulability is a pathology that remains difficult to explain today in most cases. It is likely due to a modification of the conditions of polymerization of the fibrin, the main clot component. Using passive microrheology, we measured the mechanical properties of clots and correlated them under the same conditions with structural information obtained with confocal microscopy. We tested our approach with known alterations: an excess of fibrinogen and of coagulation Factor VIII. We observed simultaneously a rigidification and densification of the fibrin network, showing the potential of microrheology for hypercoagulability diagnosis.

## 1. Introduction

Clotting is the process by which the flow of blood is stopped after an injury. This process may occur pathologically, in both arteries and veins. In the venous system, the severe forms are called Venous Thromboembolic Events (VTE), which include Deep Vein Thrombosis (DVT) and Pulmonary Embolism (PE). Today, 50% of recurrent VTE remain unexplained [1].

Coagulation is induced by a cascade activation of coagulation factors. At the end of this cascade is the activation of thrombin, which catalyzes the polymerization of fibrinogen into fibrin. This forms a network of small diameter fibers, which gel the blood and block the flow. Polymerization conditions will modify the size of the fibers, their length and density, as well as the proportion of fibrinogen polymerized, and the speed of clot setting. This induces a modification of the organization of the fibrin network [2]. This structure is usually observed directly either by scanning electron microscopy (SEM) or by confocal microscopy. SEM imaging has the advantage of being highly resolved, giving access to the diameter of the fibers, with a large depth of field providing a good overview of the structure. However, it requires complex sample preparation and provides only two-dimensional images. On the other hand, confocal microscopy has less risk of altering the network but requires the introduction of a fraction of fluorescently labeled fibrinogen. It also allows a reconstruction of the network in volume, albeit with a resolution not sufficient for a precise measurement of fiber diameters. Using these structural imaging methods, it has been shown that hemophilia is associated with a sparse network [3], while high thrombin concentrations favor a dense network [4]. However, these methods alone sometimes give contradictory results: Zabczyk et al. show that patients with recurrent PEs have denser clots than those with non-recurrent PEs in SEM [5], while Baker et al. find no difference between recurrent and non-recurrent VTEs in confocal microscopy [6].

Another approach to observe coagulation-induced gelation is based on rheology [7,8] as the network will strongly stiffen when it polymerizes. Rheological measurements are classically

made with macroscopic rheometers. Clinically, thromboelastogram (TEG) and Rotational thromboelastometry (ROTEM) are commonly used to study the dynamics of clot formation and their resistance to fibrinolysis. These methods give a rapid diagnosis on the hemostatic situation of patients [9]. In research, classical rheometers can be used, placing the clot between two metal plates before moving one of the two. Macroscopic rheology gives access to the low frequency behavior, at the scale of the whole network. Alternatively, microrheological methods have been developed, which probe the clot either actively or passively. Active methods, such as magnetic beads, have more or less the same advantages and limitations than macroscopic rheology but test the clot at a micrometric scale. Passive methods take advantage of the thermal fluctuations of beads or probes in the clot [10,11] to determine the mechanical properties. They have the advantage of giving access to the high-frequency behavior (so high shear rate), with the drawback of being limited to the small shears. In this way, it has been shown that fibrin behaves as a semi-flexible polymer, with a transition between 1 Hz and 10 Hz [6,11]. It has also been possible to associate a decrease in storage modulus in clots from patients with recurrent VTE [6].

Microstructure and mechanical properties are linked in fiber networks, as explored in previous studies [2,6,11–13]. However, no clear trend was observed, apart from a link between fibrin concentration and clot stiffness. This remains surprising, as an excess in a coagulation factor is likely to decrease the diameter of the fibers, reduce their length, increase the branchpoint density and lead to an increase in the network rigidity [2]. A difficulty in the previous approaches was that the conditions of the clot formation were different for the microstructural and the rheological characterizations. We propose here a microrheology system using bead tracking by a reflected laser, in parallel with a structure measurement by confocal microscopy. The conditions of clot polymerization being similar, our measurements are directly comparable. We have used these two approaches to discriminate unmodified clots consisting of Platelet-Poor Plasma (PPP) from a pool of donors, from those to which known hypercoagulability factors (fibrinogen or Factor VIII) had been added.

## **2. Materials and Methods**

### *2.1 Protocol of clot preparation*

Clots are made of Platelet-Poor Plasma (PPP), mixed with PPP Reagent (a mixture of tissue factor and phospholipids). As PPP is citrated to avoid coagulation, calcium has to be added. Beads are added for the microrheology measurements, and fluorescent fibrinogen for the confocal microscopy. All our clots include both, to make sure concentrations are identical for confocal and mechanical characterizations.

PPP was obtained from the blood of healthy adults. Blood was collected by venipuncture (vol/vol, 9:1 of 3.2% trisodium citrate), and centrifuged twice at 2500g for 15 min (agreement number: 20CADRE001). Supernatant was aliquoted and immediately frozen at -80°C. Individual PPP were pooled and used as PPP for all experiments. PPP was unfrozen at room temperature just prior to the experiment.

PPP reagent was obtained from PPP reagent “normal” (Stago, France), rehydrated with 500  $\mu$ L of HEPES buffer, at least 30 min prior to the experiment.

The CaCl<sub>2</sub> solution was made by dissolving calcium chloride in a HEPES solution. The concentration of the solution is adjusted in each sample, to reach a final calcium concentration of 10 mM in the clot.

The choice of volumes for the preparation of the PPP reagent and for the CaCl<sub>2</sub> solution are driven by the need to have a proper coagulation, not too fast so that we can mix the clot. We targeted 5 pM of tissue factor as the final concentration, low enough so that the intrinsic amplification pathway of thrombin generation could be analyzed. Calcium concentration was chosen to be 10 mM, similar to concentrations found in the literature [14,15].

We let the clot coagulate for 30 min at 37°C, to make sure thrombin generation, which peaks about 10 min after the addition of calcium, was completed. Even though the clot does not appear

to evolve after this peak [4], we chose to add this extra coagulation time. However, as the chemical reactions are not stopped, the fibrinolysis will eventually dissolve the clot which limits the time for measurements. Using confocal microscopy, we observed the microstructure of the clot right after the 30 min of coagulation, then after 1 hour, 2 hours and 4 hours at room temperature. We did not observe any significant difference in the structure up to 2 hours after coagulation. After 4 hours, the fluorescence signal became diffuse, likely due to the beginning of the clot lyse. We thus did confocal and microrheology measurements within a limit of 2 hours.

#### *Standard protocol:*

The following protocol was used as a reference in our experiments:

200  $\mu\text{L}$  of PPP was mixed with 10  $\mu\text{L}$  of 5 mg/mL AlexaFluor 488-conjugated fibrinogen (Molecular Probes) and with 2  $\mu\text{L}$  of 6  $\mu\text{m}$  carboxylate polystyrene microspheres ( $2.1 \cdot 10^8$  particles/mL, Polybeads®).

A pit was made by gluing cloning cylinders (Bel-Art, FisherScientific) on a coverslip. The bottom of the pit was coated with 21  $\mu\text{L}$  of PPP reagent, then 200  $\mu\text{L}$  of the PPP mixture, preheated for 10 min at 37°C, was placed in the pit. 29  $\mu\text{L}$  of a  $\text{CaCl}_2$  solution at 86 mM was added to induce the coagulation. The mixture was gently stirred. The clot was left to coagulate for 30 min at 37°C. The pit was removed from the oven, and a microscope slide was glued on the cylinder to close it, so that it could not leak and was easy to manipulate. The clot was used in the next 2 hours.

#### *Fibrinogen-enriched clots:*

The protocol was the same one as for “standard” clots, except that 25  $\mu\text{L}$  of human fibrinogen (Clottafact, LFB) was added to the PPP mixture. For the control, the fibrinogen was replaced by 25  $\mu\text{L}$  of HEPES buffer. As before, 200  $\mu\text{L}$  of the PPP mixture was placed in the pit. Finally, 4  $\mu\text{L}$  of a  $\text{CaCl}_2$  solution at 625 mM was added to induce the coagulation.

#### *Factor VIII-enriched clots:*

The protocol was the same one as for “standard” clots, except that 1.2  $\mu\text{L}$  of recombinant porcine Factor VIII (Obizur, Takeda) was added to the PPP mixture. For the control, the Factor VIII was replaced by 1.2  $\mu\text{L}$  of HEPES buffer. 200  $\mu\text{L}$  of the PPP mixture was placed in the pit and 27.8  $\mu\text{L}$  of a  $\text{CaCl}_2$  solution at 90 mM was added to induce the coagulation. This led to a concentration of Factor VIII 4 times larger than the normal one (400% in Factor VIII).

Note that we chose to maintain the same concentrations of fibrinogen and coagulation factors for the control and the corresponding enriched clot. Consequently, there are slight differences between the different controls, and thus small variations of their measured parameters.

## *2.2 Microrheology*

The mechanical properties at the microscopic scale were measured by passive microrheology using a detection system schematized in Figure 1. Compared to other passive rheology set-ups [11,16,17], it has the particularity of working in reflection. An Ytterbium fiber laser (Keopsys,  $\lambda = 1069$  nm, TEM00, linearly polarized, 150 to 600 mW power) delivering 230 mW at the entrance of a microscope objective (Nikon PlanFluor, 100x, NA 1.3) was focused on a bead to measure its displacement. Through a polarizing beamsplitter (PBS), a quarter wave plate ( $\lambda/4$ ) and a dichroic beamsplitter (DBS), the laser light reflected by the bead was detected on the quadrant photodiode (QPD, SPOT-9DMI, OSI Optoelectronics) to record the Brownian motion of the bead. Two cameras were used to guide the centering of the bead on the laser focus, using the XYZ piezo stage on which the sample is mounted, taking advantage of the reflection of the laser on the bead (see Fig. 2).

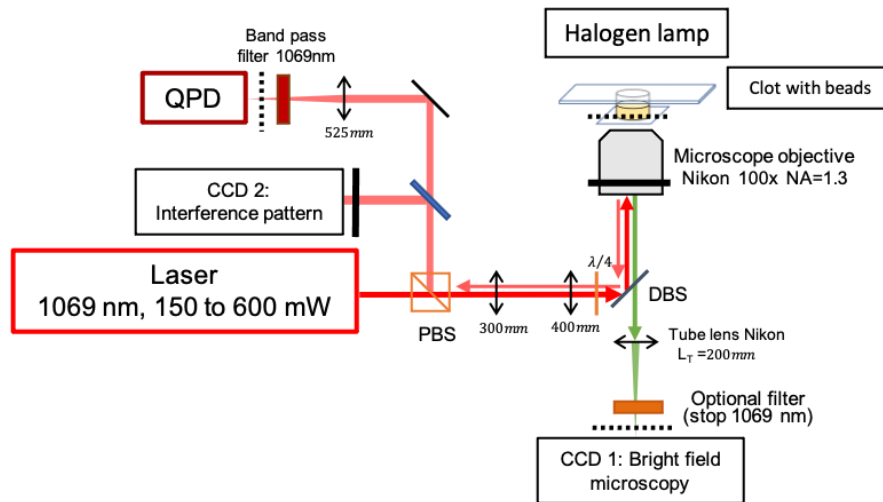


Fig. 1. Experimental setup of the detection system in reflection. A laser at 1069nm is focused through a microscope objective on a bead inserted in the clot. The cameras CCD 1 and CCD 2 are used for centering the bead on the laser focus and the quadrant photodiode (QPD) for measuring the Brownian motion of the bead. Lenses with focal lengths 300 and 400nm form a telescope that expands the laser beam and conjugate CCD 2 with the back focal plane of the objective. Dotted and solid lines show two series of conjugate planes: the bead, CCD 1 and the QPD on one side, CCD 2 and the back focal plane of the objective on the other.

The first camera monitored the focusing on the bead. To do so, the clot is observed in bright field microscopy with the camera (see, in Figure 1, CCD 1 with filter). To choose the height of the measured beads, we used as a reference the reflection of the laser focus on the cover slip and then moved the sample down by a controlled amount with the piezo stage, looking for beads in focus in the range of 40 to 60  $\mu\text{m}$  height from the coverslip. Difference in the appearance of the bead, especially the rapid transition from dark to bright at the center of the image of the bead as shown in Figure 2b, allows us to adjust the Z position of the bead with a precision of 1  $\mu\text{m}$ . This adjustment matches our ultimate criteria, which is a linear response of the QPD signal with x and y displacement, as shown in Fig 2d. Finally, we used the laser light reflected on the bead (CCD 1 without filter) to center the bead on the laser by moving the piezo stage laterally in the X and Y directions.

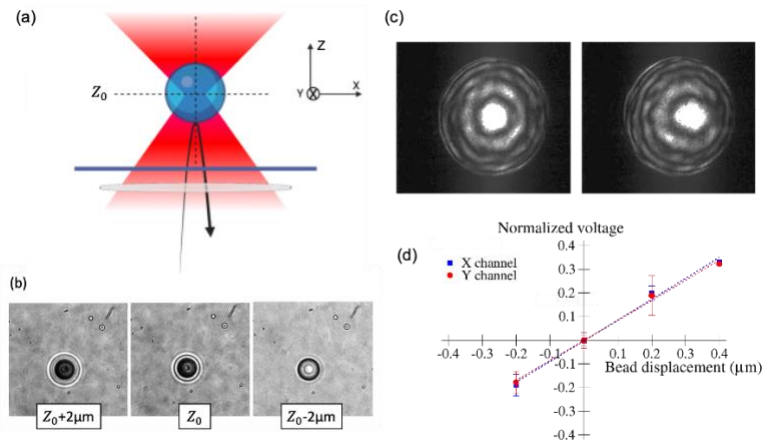


Fig. 2. Step-by-step method for centering the bead on the laser focus. (a) Schematics of the laser interacting with the bead in the centered position. (b) Image of the bead on CCD 1 when the bead is  $2\ \mu\text{m}$  below the focal plane ( $Z_0 + 2\ \mu\text{m}$ ), when the bead is in the focal plane ( $Z_0$ ) and  $2\ \mu\text{m}$  above the focal plane ( $Z_0 - 2\ \mu\text{m}$ ). The image with a dark center first becomes smaller, then its center changes rapidly from dark to bright. (c) Interference pattern on CCD 2 for a centered bead in X and Y (left) and for a bead displaced  $200\ \text{nm}$  in the X direction (right). (d) Normalized voltage measured by the QPD as a function of the displacement in X and Y (in  $\mu\text{m}$ ) applied to the bead by the piezo. The slopes on this plot give the calibration factors of the QPD signal in X and Y in  $\mu\text{m}^{-1}$ .

A more precise lateral centering of the bead on the laser focus is achieved with the second camera (CCD 2). It records the interference pattern at infinity (in the back focal plane of the objective, conjugated with CCD 2, see Fig. 1) generated by the superposition of 3 reflected beams: on the coverslip and on the lower and upper surfaces of the bead. The symmetry of this interference pattern is very sensitive to the position of the bead with respect to the focus of the laser. We estimated the precision of this centering in X and Y to  $200\ \text{nm}$  (see Fig. 2c).

Finally, the normalized voltages on the QPD (difference of quadrants divided by their sum) must be converted into displacement in the plane of the bead. This calibration is performed by moving the piezo stage in 4 steps of  $0.2\ \mu\text{m}$  in X and Y, and recording the center of the Brownian motion. When the bead is well centered on the laser focus, the signal remains linear with the piezo displacement. The slope gives us a calibration factor for each Brownian motion recording: on average,  $1.03\ \mu\text{m}^{-1}$  on X, and  $0.98\ \mu\text{m}^{-1}$  on Y.

From the Brownian motion of a bead, we can calculate the local storage ( $G'$ ) and loss ( $G''$ ) moduli of the medium surrounding the bead as a function of angular frequency [10]. The details of the procedure are given in the Supplementary Material.

Figure 3 describes the main steps of the procedure. First, the power spectral densities (PSD) of the bead motions in X and Y are determined, and filtered to reduce the noise. Second, the compliances of the medium are computed from the PSDs, enabling to determine the storage and loss moduli in each direction. Finally, the X and Y values are averaged to reduce the noise, as the Brownian motions are symmetrical. For all clots, the variations of the storage and loss moduli with frequency have similar behavior (see Fig. 3c). We chose to characterize the mechanical response of each bead at two frequencies,  $30$  and  $3000\ \text{rad/s}$ , one on each side of the transition frequency at  $100\ \text{rad/s}$ . To obtain these values, the storage and loss moduli are fitted by a power-law in the ranges  $10$ - $100\ \text{rad/s}$  and  $103$ - $104\ \text{rad/s}$ . We recorded 3 to 4 Brownian motions per bead. The same analysis is performed on each Brownian motions and the associated storage and loss moduli are averaged; the mean values being considered as the moduli of this bead.

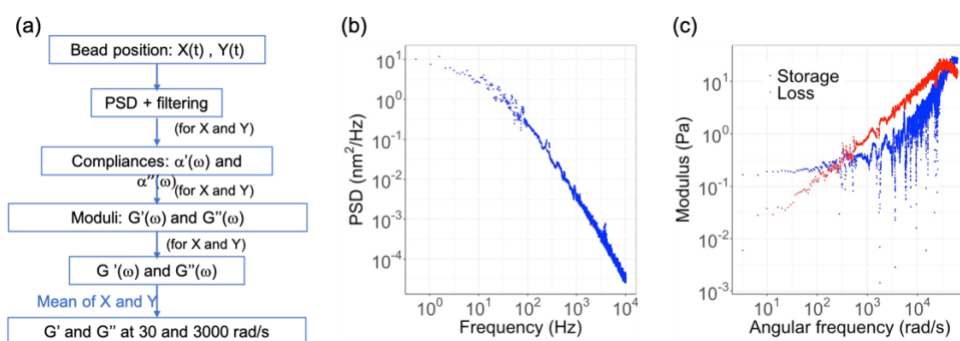


Fig. 3. Determination of the viscoelastic moduli. (a) Principle of the moduli determination. Starting from the recorded bead positions, the PSDs in each direction were computed, and filtered to reduce the noise: subfigure (b) shows an example of a PSD graph in one direction after filtering. Then, the compliances were determined, followed by the moduli  $G'$  (storage) and  $G''$  (loss) for each direction. Finally, we took the mean of the moduli in the two directions to obtain the moduli  $G'$  and  $G''$ : subfigure (c) shows an example of the moduli  $G'$  (storage) and  $G''$  (loss) as a function of the angular frequency  $\omega$ . Finally, to determine their values at 30 and 3000 rad/s, the moduli are fitted by a power-law around each of those two angular frequencies.

In all our experiments, we observed a correlation between the storage modulus at low frequency (30 rad/s) and the other moduli that we measured (loss moduli at 30 rad/s and 3000 rad/s, and storage modulus at 3000 rad/s). Consequently, we chose the storage modulus at 30 rad/s to be our reference measurement.

The moduli were measured with 6  $\mu\text{m}$  beads. We also tested beads with 3 and 10  $\mu\text{m}$  diameters but found that the dispersion in the measurements of storage modulus were larger. It could be due to the centering of the bead on the laser that was more critical with the 3  $\mu\text{m}$  beads, and less precise for the 10  $\mu\text{m}$  beads.

### 2.3 3-dimensional fibrin structure analysis

To determine the structure of the clots and its possible modifications, we imaged the clots with a confocal microscope (LSM 700, Zeiss). We imaged a stack of 160  $\mu\text{m}$  by 160  $\mu\text{m}$  by 21.5  $\mu\text{m}$  (corresponding to 50 images with a voxel of 156 nm x 156 nm x 430 nm), starting at 55  $\mu\text{m}$  from the coverslip, so that we are close to the height chosen for the microrheology measurement. To probe the homogeneity of the structure, we used a series of stacks starting at the coverslip and going up to 100  $\mu\text{m}$  inside the sample, each stack having the same dimensions (160  $\mu\text{m}$  by 160  $\mu\text{m}$  by 21.5  $\mu\text{m}$ ).

For the quantitative analysis we used Fiji (doi:10.1038/nmeth.2019) to analyze each stack. Figure 4 presents the main steps of the procedure. Fibrin network parameters (fiber length and fibrin density) were quantified by performing several operations (threshold, filtering, skeletonization) on the fibrin stacks. Segmentation data were post-processed with a home-made algorithm (using Matlab software) in order to remove artifacts created by the skeletonization step. The first artefacts removed are micro-branches. Those are due to the thickness of the fibers in the confocal image: a fluctuation in the thickness may be perceived as an extra branch during the skeletonization process. To avoid this, any terminal branch shorter than the width of the branch is removed. The second artefacts are due to the thick intersections, which create artificial branching points, connected by very short fibers. These points are merged if they are at a distance shorter than the typical width of a fiber (see Supplementary Material for more details).

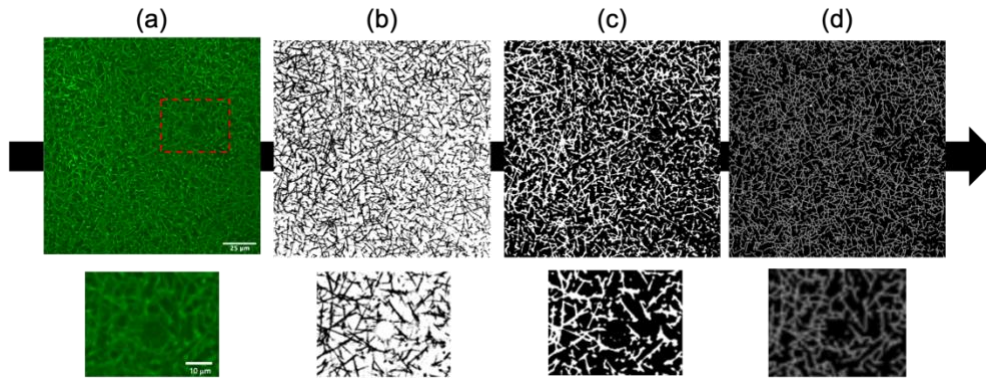


Fig. 4. Three-dimensional (3D) quantification of a standard clot. All images shown here are the Z-projection of 10 optical sections for clarity, but the quantification is done on the full Z-stack of 50 optical sections, recorded with a confocal microscope. Subpictures below show a zoom on the same region of the main image at the different steps. A bead can be seen at the center of subpictures, appearing as a black disk as beads are non-fluorescent. Analysis was made using Fiji software up to the skeletonized image. (a) Raw micrograph of a fibrin network. (b) The fluorescence distribution is used to determine an optimal threshold, and thus a noisy binary image. (c) Filtered image. (d) The filtered image is skeletonized. A last step is performed to remove the artifacts (see Supp. Mat.) due to the skeletonization. Density of branching points, density of fibers, and length of the fibers are then determined. Scale bar: 25  $\mu\text{m}$

## 2.4 Statistics

Statistical tests were performed using Jamovi software. We used Mann–Whitney U test, with the assumption that one parameter was greater than another when a trend was clearly visible. Removing this assumption generally slightly affects the final p-value, without changing the conclusion. We used a non-parametric test as we are comparing small populations.

## 3. Results

### 3.1 Effect of height on clot mechanics and structure

We first studied the effect of the height (i.e., distance to the coverslip) on the modulus and structure of the clot. The modulus is given at 30 rad/s, measured by tracking the movement of 6  $\mu\text{m}$  beads at different heights: 2 to 5 beads in each of the 4 different clots. The dependence with height was the same in all clots (see Fig. 5). We observed a decrease of the storage modulus with height, well described by an exponential decay over a typical height of 13  $\mu\text{m}$ , before an asymptotic plateau at 0.1 Pa. This variation with height does not show in the structure of the clot itself. The density of fibers per unit volume does not vary with height, while the fiber length increases very slightly, by about 6% in 100  $\mu\text{m}$ . This confirms the homogeneity of the clots prepared with our protocol. We also measured the structural parameters at different lateral locations in the sample, without observing any significant variation.

These results suggest that the stiffness of the network is increased by edge effects. This is why we selected in the following experiments beads at a height between 40 and 60  $\mu\text{m}$ : high enough to reach the asymptotic value of the modulus, but not too high to limit scattering of the laser in the clot.



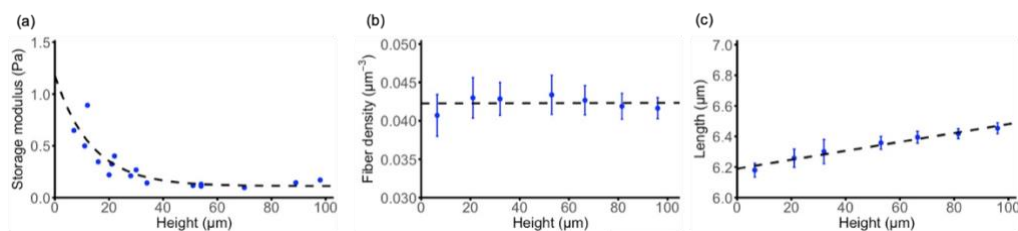


Fig. 5. Height dependence of viscoelastic moduli and of structural parameters. (a) Storage modulus measured for multiple beads at different heights in 4 normal clots (one dot represents one bead); (b) Fiber density (number of fibers per unit of volume) and (c) fiber length measured in normal clots at different heights. In (b) and (c), one dot represents the average measurement and its standard deviation for 4 clots.

### 3.2 Effect of fibrinogen enrichment

To induce a modification of the network, we first enriched the plasma with 10% of fibrinogen. This should lead either to larger fibers or to a denser network. Both mechanisms can explain the increase in network stiffness that we observed (see Fig. 6a). As expected, the increase in fibrinogen concentration resulted in a significant increase in fiber density, by  $50\% \pm 14\%$  and a decrease in the length of the fibers, by  $1.6\% \pm 0.8\%$  (see Fig. 6b and c). The distributions of the PSD and of the moduli for each condition are available in the Supplementary Material (Fig. S4 and S5).

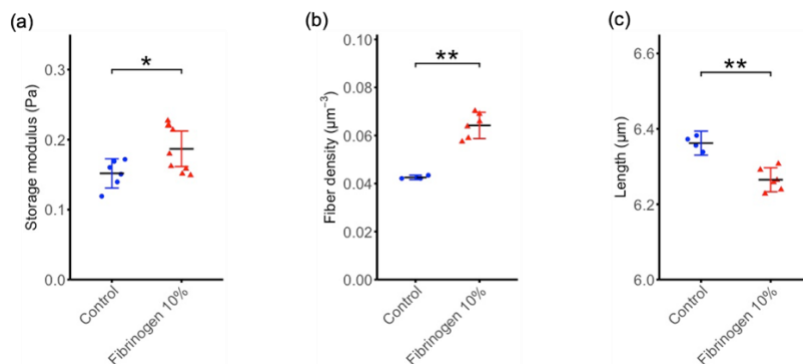


Fig. 6. Mechano-structural properties of clots enriched in fibrinogen. (a) Storage modulus at 30 rad/s, (b) fiber density, and (c) fiber length, measured for control and clot enriched with 10% of fibrinogen. In (a), each point is the average value from three to five different beads in one given clot. In (b) and (c), each point is the measurement on a given clot. (\*):  $p < 0.05$ , (\*\*):  $p < 0.01$ .

### 3.3 Effect of Factor VIII enrichment

To approximate a classical hypercoagulability situation, we added Factor VIII to the plasma, up to a concentration of 400% (4 times more than in clots obtained with control plasmas). This induced an increase in clot stiffness (see Fig. 7a), by 25%. We also observed an increase in fiber density and a decrease in fiber length (see Fig. 7b and c), by  $16\% \pm 13\%$  and  $1.2\% \pm 1.4\%$ , respectively. The distributions of the PSD and of the moduli for each condition are available in the Supplementary Material (Fig. S6 and S7).

We thus observed that an increase in polymerization factors favors the appearance of a larger number of shorter fibers, which is explained by a faster induction of polymerization.

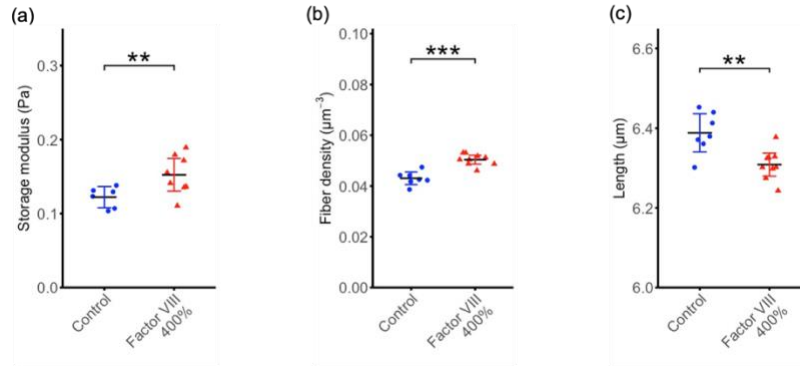


Fig. 7. Mechano-structural properties of clots enriched in Factor VIII at 400%. (a) Storage modulus at 30 rad/s, (b) fiber density, and (c) fiber length, measured for control and clot enriched with 10% of coagulation Factor VIII. In (a), each point is the average value from three to five different beads in one given clot. In (b) and (c), each point is the measurement on a given clot. (\*\*):  $p < 0.01$ , (\*\*\*):  $p < 0.001$ .

#### 4. Discussion

We set up a dual approach, allowing measurements of the rheology and of the microstructure of a clot in the same experimental conditions. We could not perform the two measurements on the same clot, as it evolves with time. However, we could quantify both properties for clots formed under the same conditions from PPP and observe the effect of factors mimicking hypercoagulability.

We developed a quantification of the fibrin network, with the determination of the length between branches, and the fibrin density. These parameters are obtained directly from the confocal images, after thresholding and removal of spurious branches. Another important parameter is the diameter of the fibers, but it cannot be measured by confocal microscopy, as it is around 100 nm [6,18], smaller than the resolution limit.

The microrheological behavior of the fibrin network is similar to those reported in the literature [11,17] (see Fig. 3c). At low frequencies, the storage modulus is constant, around a few tenths of Pa for normal clots. This modulus is in the wide range of values reported in the literature. It is superior to the loss modulus, which varies as a power-law of the angular frequency  $\omega$ , reflecting a solid-like behavior. At high frequencies, both loss and storage moduli vary as a power-law of  $\omega$ , with the loss modulus higher than the storage one, denoting a fluid-like response. The transition frequency between the two regimes was found in our experiments around 100 rad/s. At high frequency, the moduli vary as  $\omega$  to the power  $0.92 \pm 0.03$ . This value has been obtained for the loss modulus. For the storage modulus, which is much noisier, the fit is less accurate. Therefore, we checked visually on most curves that the exponent obtained on the loss modulus is adequate also for the storage modulus. This is a natural consequence of the power-law behavior of the PSDs far away from the transition [10]. The exponent of 0.92 is closer to 7/8 than to 3/4, which is the exponent expected for semi-flexible polymer networks [19–21] and previously observed for fibrin [11,22]. The exponent 7/8 has been reported on fibrin networks made from human plasma [17]. It may be associated with the fluctuations of the filaments in their longitudinal directions, although this was expected to play a minor role in the network response [23]. However, our measured exponent is even higher than 7/8 and may be associated to yet another response of the network. We consider that this difference comes likely from the fact that we use a full plasma clot and not a reconstructed fibrin network: the clot microstructural organization depends strongly of the polymerization condition, which are different for plasma with all the coagulation factors than for solutions of only thrombin and fibrin. We did not observe any significant difference in the exponent between the different conditions that we tested.

The symmetry of the Brownian motion shows that the bead is in a quasi-isotropic medium, and thus that we do not measure the response of an individual fiber. Note that we did not observe any trapping of the bead by the detection laser: the displacement of the laser did not lead to any movement of the bead, even when the laser power was increased. We thus neglected the trap stiffness in the mechanical response of the bead. Our protocol enables us to prepare spatially-homogeneous clots (see Fig. 5). However, if we are too close from the glass surface (less than 40  $\mu\text{m}$ ), we observed an increase of the moduli (see Fig. 5a). This boundary effect is well known for the loss modulus [24].

Our goal was to evaluate whether hypercoagulability due to imbalances in coagulation factors was reflected in clot properties. To do this, we started by the addition of fibrinogen. Not surprisingly, this resulted in an increase in fibrin density (see Fig. 6b). As more fibrin promotes a tighter network, we expect shorter fiber lengths. However, the measured reduction in length is small compared to the increase in density. The excess of fibrin may translate into thicker fibers. However, it is also possible that tiny fibrils are created, with a size smaller than our resolution. In both cases, the logical consequence is that the network is stiffer, resulting in an increase in storage modulus (see Fig. 6a). This is a statistical result: if the average modulus increases, the dispersion also increases, with moduli sometimes equal to those of the control clots. This increase in dispersion is difficult to explain but may reflect a greater heterogeneity of the network, with pores that are larger or smaller than the size of the bead.

To mimic a known situation of hypercoagulability, we chose to add Factor VIII up to concentrations 4 times larger than the normal one (400%) [25–27]. In this situation we observed an increase in the density of the network, which is explained by a greater activation of thrombin, which will transform more fibrinogen into fibrin (see Fig. 7b). This densification is less important than when fibrinogen is added directly. We observed a moderate but significant decrease in the length of the fibers, similar to that observed when fibrinogen was added (see Fig. 7c). This suggests that the diameter of the fiber increases, but less than with the addition of fibrin. This leads to an unsurprising increase in storage modulus (Fig. 7a). It should be noted that the absolute values of the moduli in the Factor VIII enrichment experiment are not directly comparable to those measured in the fibrinogen enrichment experiment. Indeed, the changes in control preparation protocols lead to slightly lower moduli for the control. However, the increase in storage modulus is similar with the addition of Factor VIII than with the enrichment in fibrinogen, but more discriminant (smaller p-value).

## 5. Conclusion

Our approach enables us to observe both the structure and the microrheology of fibrin clots under the exact same polymerization condition, on plasma pooled from donors. We changed the polymerization conditions first by adding an excess of fibrinogen, and second by increasing the concentration of Factor VIII (by 400%). In both cases, we observed an increase of the fiber density and of the storage modulus, while the fiber length appears mainly unaffected, suggesting that the fiber diameter has probably increased. To go further, it would be interesting to explore different concentrations of coagulation factors, inhibitors, and fibrinogen, keeping in mind that the coagulation reactions, in cascade, do not lead to linear effects in the concentration of the different factors. To move towards clinical applications, we plan to accelerate the microrheology measurement by automatizing the bead centering procedure. We could also consider using reflectance confocal microscopy as a cheaper and less invasive way to observe the microstructure. With these prospects for development, the results of our mechano-structural measurements are encouraging towards a diagnostic test of thrombosis predisposition in patients.

**Acknowledgements.** The authors would like to thank Dr. Christine Mouton and Ms. Françoise Rat for providing the Clottafact, Léo Viallet and Oscar Boyadjian-Braize for their help in the design of the microrheology experiment, and Pierre Mahou for his help with the confocal microscope.

**Disclosures.** The authors declare no competing interests.

**Data availability.** The raw data supporting the conclusions of this article and the codes used for data analysis in this publication are available upon request to the authors, without undue reservation.

**Supplementary document.** See online for supporting material.

## References

1. M. L. R. Cunha, J. C. M. Meijers, and S. Middeldorp, "Introduction to the analysis of next generation sequencing data and its application to venous thromboembolism," *Thromb Haemost* **114**(11), 920–932 (2015).
2. E. A. Ryan, L. F. Mockros, J. W. Weisel, and L. Lorand, "Structural Origins of Fibrin Clot Rheology," *Biophysical Journal* **77**(5), 2813–2826 (1999).
3. L. Leong, I. N. Chernysh, Y. Xu, D. Sim, C. Nagaswami, Z. de Lange, S. Kosolapova, A. Cuker, K. Kauser, and J. W. Weisel, "Clot stability as a determinant of effective factor VIII replacement in hemophilia A," *Research and Practice in Thrombosis and Haemostasis* **1**(2), 231–241 (2017).
4. A. S. Wolberg, "Thrombin generation and fibrin clot structure," *Blood Reviews* **21**(3), 131–142 (2007).
5. M. Zabczyk, K. Plens, W. Wojtowicz, and A. Undas, "Prothrombotic Fibrin Clot Phenotype Is Associated With Recurrent Pulmonary Embolism After Discontinuation of Anticoagulant Therapy," *Arterioscler Thromb Vasc Biol.* **37**(2), 365–373 (2017).
6. S. R. Baker, M. Zabczyk, F. L. Macrae, C. Duval, A. Undas, and R. A. S. Ariëns, "Recurrent venous thromboembolism patients form clots with lower elastic modulus than those formed by patients with non-recurrent disease," *J Thromb Haemost* **17**(4), 618–626 (2019).
7. A. E. Schmidt, A. K. Israel, and M. A. Refaai, "The Utility of Thromboelastography to Guide Blood Product Transfusion," *American Journal of Clinical Pathology* **152**, 407–422 (2019).
8. J. R. Guzman-Sepulveda, M. Batarseh, R. Wu, W. M. DeCampli, and A. Dogariu, "Passive high-frequency microrheology of blood," *Soft Matter* **18**(12), 2452–2461 (2022).
9. D. Whiting and J. A. DiNardo, "TEG and ROTEM: Technology and clinical applications," *Am. J. Hematol.* **89**(2), 228–232 (2014).
10. B. Schnurr, F. Gittes, F. C. MacKintosh, and C. F. Schmidt, "Determining microscopic viscoelasticity in flexible and semiflexible polymer networks from thermal fluctuations," *Macromolecules* **30**(25), 7781–7792 (1997).
11. I. K. Piechocka, R. G. Bacabac, M. Potters, F. C. MacKintosh, and G. H. Koenderink, "Structural Hierarchy Governs Fibrin Gel Mechanics," *Biophysical Journal* **98**(10), 2281–2289 (2010).
12. N. A. Kurniawan, T. H. S. van Kempen, S. Sonneveld, T. T. Rosalina, B. E. Vos, K. A. Jansen, G. W. M. Peters, F. N. van de Vosse, and G. H. Koenderink, "Buffers Strongly Modulate Fibrin Self-Assembly into Fibrous Networks," *Langmuir* **33**(25), 6342–6352 (2017).
13. R. I. Litvinov and J. W. Weisel, "Fibrin mechanical properties and their structural origins," *Matrix Biology* **60–61**, 110–123 (2017).
14. Y. Dargaud, S. Béguin, A. Lienhart, R. Al Dieri, C. Trzeciak, J. Bordet, C. Hemker, and C. Negrier, "Evaluation of thrombin generating capacity in plasma from patients with haemophilia A and B," *Thromb Haemost* **93**(03), 475–480 (2005).
15. G. N. Gidley, L. A. Holle, J. Burthem, P. H. B. Bolton-Maggs, F.-C. Lin, and A. S. Wolberg, "Abnormal plasma clot formation and fibrinolysis reveal bleeding tendency in patients with partial factor XI deficiency," *Blood Advances* **2**(10), 1076–1088 (2018).

16. F. Gittes, B. Schnurr, P. D. Olmsted, F. C. MacKintosh, and C. F. Schmidt, "Microscopic viscoelasticity: shear moduli of soft materials determined from thermal fluctuations," *Physical review letters* **79**(17), 3286 (1997).
17. P. Domínguez-García, G. Dietler, L. Forró, and S. Jeney, "Filamentous and step-like behavior of gelling coarse fibrin networks revealed by high-frequency microrheology," *Soft Matter* **16**(17), 4234–4242 (2020).
18. M. Celińska-Löwenhoff, T. Iwaniec, A. Padjas, J. Musiał, and A. Undas, "Altered fibrin clot structure/function in patients with antiphospholipid syndrome: association with thrombotic manifestation," *Thromb Haemost* **112**(08), 287–296 (2014).
19. D. Wirtz, "Particle-Tracking Microrheology of Living Cells: Principles and Applications," *Annu. Rev. Biophys.* **38**(1), 301–326 (2009).
20. C. P. Broedersz and F. C. MacKintosh, "Modeling semiflexible polymer networks," *Rev. Mod. Phys.* **86**(3), 995–1036 (2014).
21. K. M. Addas, C. F. Schmidt, and J. X. Tang, "Microrheology of solutions of semiflexible biopolymer filaments using laser tweezers interferometry," *Phys. Rev. E* **70**(2), 021503 (2004).
22. M. Jahnel, T. A. Waigh, and J. R. Lu, "Thermal fluctuations of fibrin fibres at short time scales," *Soft Matter* **4**(7), 1438 (2008).
23. R. Everaers, F. Jülicher, A. Ajdari, and A. C. Maggs, "Dynamic Fluctuations of Semiflexible Filaments," *Phys. Rev. Lett.* **82**(18), 3717–3720 (1999).
24. A. Yao, M. Tassieri, M. Padgett, and J. Cooper, "Microrheology with optical tweezers," *Lab on a Chip* **9**(17), 2568 (2009).
25. M. Franchini, I. Martinelli, and P. M. Mannucci, "Uncertain thrombophilia markers," *Thromb Haemost* **115**(01), 25–30 (2016).
26. T. Sinegre, C. Duron, T. Lecompte, B. Pereira, S. Massoulier, G. Lamblin, A. Abergel, and A. Lebreton, "Increased factor VIII plays a significant role in plasma hypercoagulability phenotype of patients with cirrhosis," *Journal of Thrombosis and Haemostasis* **16**(6), 1132–1140 (2018).
27. T. Saleem, B. Burr, J. Robinson, K. Degelman, J. Stokes, C. Noel, and R. Fuller, "Elevated plasma factor VIII levels in a mixed patient population on anticoagulation and past venous thrombosis," *Journal of Vascular Surgery: Venous and Lymphatic Disorders* **9**(5), 1119–1127 (2021).