



HAL
open science

The Albian tectonic “crisis” in Central Tunisia: Nature and chronology of the deformations

Etienne Jaillard, Thierry Dumont, Jamel Ouali, Jean-Pierre Bouillin, Abir Chihaoui, Jean-Louis Latil, Hubert Arnaud, Annie Arnaud-Vanneau, Ihsen Zghal

► **To cite this version:**

Etienne Jaillard, Thierry Dumont, Jamel Ouali, Jean-Pierre Bouillin, Abir Chihaoui, et al.. The Albian tectonic “crisis” in Central Tunisia: Nature and chronology of the deformations. *Journal of African Earth Sciences*, 2013, 85, pp.75-86. <10.1016/j.jafrearsci.2013.04.008>. <hal-04048162>

HAL Id: hal-04048162

<https://hal.science/hal-04048162v1>

Submitted on 27 Mar 2023

HAL is a multi-disciplinary open access archive for the deposit and dissemination of scientific research documents, whether they are published or not. The documents may come from teaching and research institutions in France or abroad, or from public or private research centers.

L'archive ouverte pluridisciplinaire **HAL**, est destinée au dépôt et à la diffusion de documents scientifiques de niveau recherche, publiés ou non, émanant des établissements d'enseignement et de recherche français ou étrangers, des laboratoires publics ou privés.



HAL Authorization

THE ALBIAN TECTONIC “CRISIS” IN CENTRAL TUNISIA : NATURE AND CHRONOLOGY OF THE DEFORMATIONS

Etienne JAILLARD⁽¹⁾, Thierry DUMONT⁽²⁾, Jamel OUALI⁽³⁾, Jean-Pierre BOUILLIN⁽²⁾,
Jean-Louis LATIL⁽⁴⁾, Abir CHIHAOUI⁽²⁾, Hubert ARNAUD⁽²⁾, Annie ARNAUD-
VANNEAU⁽²⁾, Ihsen ZGHAL⁽³⁾

- (1) Grenoble University, ISTERre, IRD, Maison des Géosciences, BP 53, 38 041 Grenoble Cedex 9, France.
(2) Grenoble University, ISTERre, Maison des Géosciences, BP 53, 38 041 Grenoble Cedex 9, France.
(3) Ecole Nationale d’Ingénieurs de Sfax (ENIS), Route de Soukra, BP W, 3038 Sfax, Tunisia
(4) G.R.E.G.B., Le Maupas, 05300 Lazer par Laragne, France

Abstract : The Mid-Cretaceous tectonic “crisis” is a classical feature of the tectono-sedimentary evolution of Tunisia. A reappraisal of the synsedimentary deformations observed in the Tagerouine and Kasserine areas shows that deformations began in the earliest Albian, increased during the Early Albian, and culminated in the Middle Albian. Late Albian deposits overly, locally with a strong angular unconformity, Aptian to Early Albian sediments. In the southern part of the studied area, fault tectonics and tilted blocks dominate, whereas in the northern area, the occurrence of slumps and olistoliths suggests deformations related to incipient salt movements at depth. These new chronological constraints suggest that this tectonic event is most probably related to the final opening of the Atlantic Ocean at equatorial latitudes.

Key-words : Stratigraphy, synsedimentary deformations, Albian, Central Tunisia, fault tectonics, diapirism.

1. Introduction

The Mid-Cretaceous tectonic phase is a classical feature of the geological evolution of Central Tunisia and Eastern Algeria, where it was often ascribed to the Aptian (“Aptian crisis” of Soyer and Tricart, 1987; Rigane et al., 2010; Zouaghi et al., 2011). It is usually interpreted as an extensional tectonic phase related, either to the rifting of the Equatorial Atlantic Ocean, or to the rifting of the Eastern Mediterranean (“Mesogean”) Ocean (Burolet, 1956; Soyer and Tricart, 1987; Martinez et al., 1991; Barrier et al., 1993; Piqué et al., 1998; Bouaziz et al., 2002; Guiraud et al., 2005; Ouali, 2007). It would have provoked the end of the Aptian carbonate shelf sedimentation, the emergence of Central Tunisia, and the regional unconformity of Late Albian beds upon Jurassic to Early Albian deposits.

However, few studies document the nature, distribution and accurate chronology of these deformations, which should provide evidences for the regional interpretation of this tectonic event. The aim of this contribution is to bring accurately dated and well documented examples of synsedimentary deformations, in order to make their regional or geodynamic interpretation more reliable. For this purpose, we shall present some synsedimentary

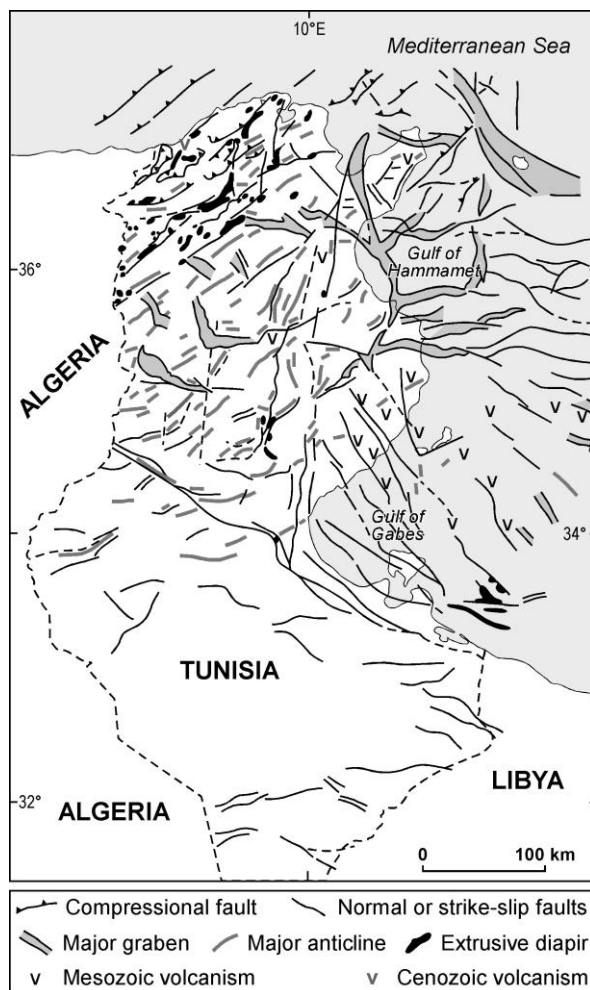
deformations observed in well dated Late Aptian-Albian deposits, between 35° and 36° lat. N. in western Central Tunisia, in the light of new stratigraphic data obtained recently.

2. Geological setting

Tunisia is part of the southern Tethyan margin, which is marked by a Late Triassic to Middle Jurassic rifting, a middle Cretaceous extensional tectonic event, and by compressional tectonic events from the Late Cretaceous onwards, which culminated with Mid-Late Eocene and Plio-Pleistocene compressional phases, related to the Alpine orogeny (Buroillet, 1956 ; Bishop, 1975; Masse et al., 1995; Souquet et al., 1997 ; Frizon de Lamotte et al., 2000; 2011).

During the Cretaceous, the passive margin of Tunisia is classically divided into three main paleogeographic domains (Fournié and Pacaud, 1973; Zghal and Arnaud, 2005; Fig. 1).

– To the South, the stable Saharan epicratonic platform is covered by thin, mainly clastic, continental to shallow marine deposits, which are virtually undeformed.



– The Central Tunisian platform is marked by shallow marine, first siliciclastic, then calcareous deposits. The Central Tunisian platform is bounded to the north by the present-day NE–SW trending thrust and fold belt that corresponds to the Tell chain, and includes the southern Chott depression that separates the Saharan and Central Tunisian platforms. It is presently marked by NW-trending folds and by SW-trending grabens, both of Neogene age.– The North Tunisian basin received thick marly deposits during most of the Cretaceous, and is presently folded to form the Tunisian Tell, marked by numerous thrusts and diapirs (Fig. 1).

The studied area is comprised between Jebel Harraba to the Northwest, Jebel Jerissa and Bou el Haneche to the East, and Jebel El Hamra to the South. It comprises Jebel Harraba, Guern Halfaya, Henchir el Goussa, and Jebel Hameima, Slata, Jerissa, Bou el Haneche, Ajered and el Hamra (Fig. 2).

Fig. 1. Structural sketch of Tunisia, and location of Fig. 2.

3. Stratigraphy

The Aptian-Albian stratigraphy of Central Tunisia has been first established by Buroillet (1956, see also Dubourdiou, 1956) and then refined by Bismuth (1973; Bismuth et al. 1981, 1982) and M'rabet (1981; M'rabet et al., 1995). According to more recent works (Zghal 1994; Zghal et al., 1997; Jaillard et al., 2005; Robaszynski et al., 2008; Chihaoui et al., 2010; Latil, 2011), the following nomenclature will be adopted.

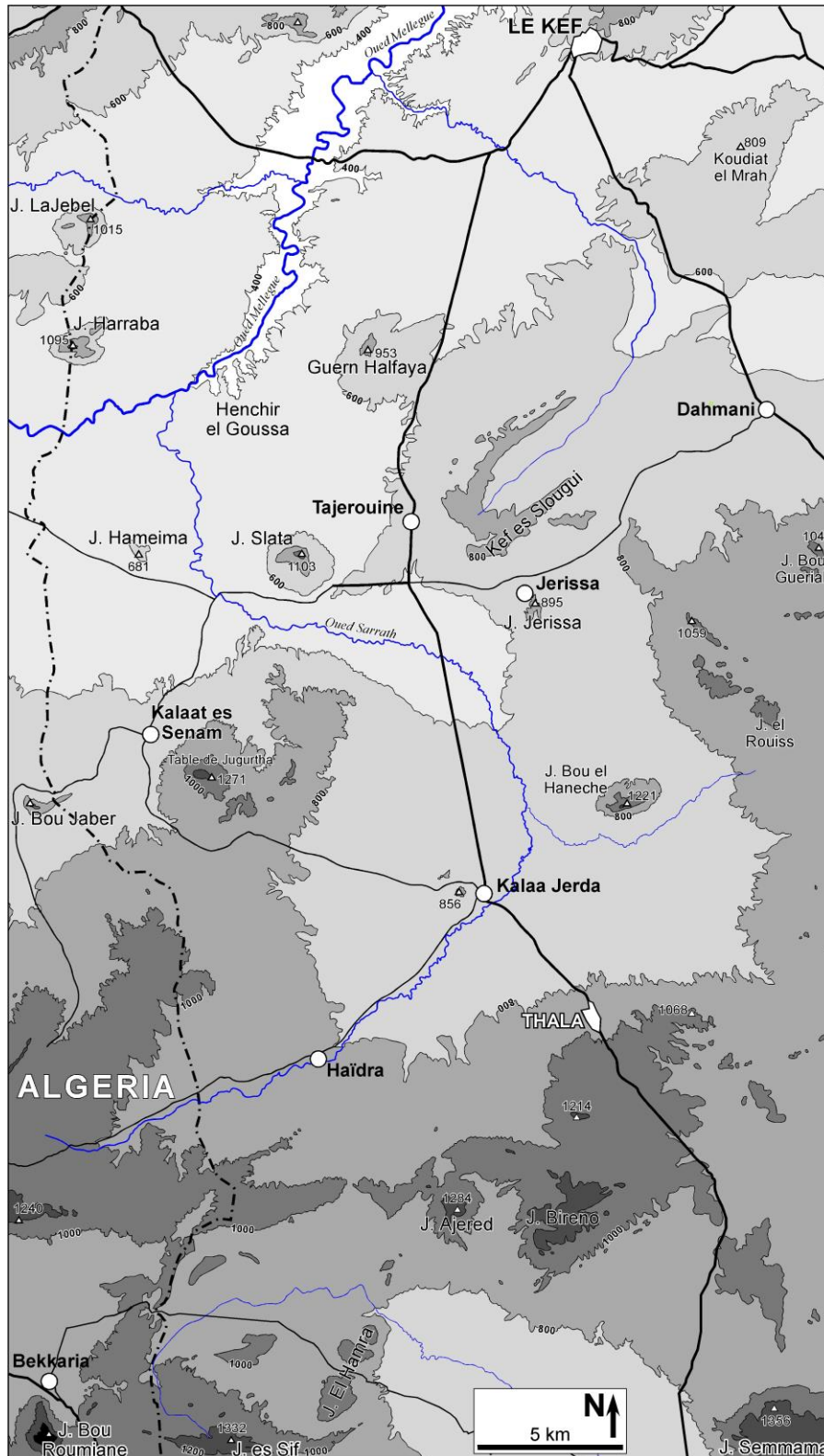


Fig. 2. Location map of the main studied areas (location of Fig. 1).

The Late Aptian Serdj Formation is composed of massive limestones and dolostones, which form steep reliefs. To the North and Northwest, these Aptian rocks form reliefs that dominate the surrounding plains, mostly made of Albian to Late Cretaceous marls and

covered by recent deposits, whereas to the South and Southeast, they are surrounded by Cenomanian and Turonian limestone cliffs.

Where present, the Hameima Formation overlies the Serdj Formation, usually in conformable contact. It is composed of marls, limestone and sandstone beds, and can be divided into three members. The Lower Member is mostly composed of marls and limestones, locally dolomitized. The Middle Member is made of sandstones alternating with sandy to silty marls. The Upper Member is mostly calcareous, and wedges out toward the Northwest (Hameima, El Goussa), where shales of the Fahdene Formation directly overlie the Middle Member of the Hameima Formation. The ammonite fauna indicates an earliest Albian age for the Hameima Formation (*L. tardefurcata* zone; Chihaoui et al., 2010; Latil, 2011).

The Fahdene Formation is mostly made of shaly marls. Burollet (1956) divided it, from base to top, into the Lower Shales, the Allam Limestones, the Middle Shales, the Mouelha Limestones, and the Upper Shales (Fig. 3). We will deal only with the Lower Shales, the Allam Limestones and the base of the Middle Shales.

According to Chihaoui et al. (2010), the Lower Shales are dominated by shales and marls, and comprise several units, which will not be described here. The base of the Lower Shales (“Basal Shales”) is still of earliest Albian age (*L. tardefurcata* zone), while most of the unit is of Early Albian age (*D. mammillatum* superzone *p.p.*) (Fig. 3).

The “Allam limestones” are made of alternating dark shales and marly laminated limestones. Their lower part is of late Early Albian age (*D. mammillatum* superzone), while the upper half part is of late Early Albian age (*L. pseudolyelli* zone, Chihaoui et al., 2010).

The base of the Middle Shales, of Late Albian age, is diachronous, its age being comprised between the *D. cristatum* zone to the North (Hameima) and the *M. pricei* or even the *M. inflatum* zone to the South (*e.g.* El Hamra). Therefore, the Allam Limestones and the Middle Shales are separated by a long-lasting hiatus that spends the Middle Albian and locally a significant part of the Late Albian (Fig. 3).

Tajerouine area			Jebel el Hamra		Age
Formation	Member	Unit	Formation	Unit	
Fahdene	Mouelha Lst.		Fahdene		fallax z. inflatum z. pricei z. cristatum z. Late ALBIAN
	Mid. Shales				
	Allam Lst.		Intermediate Series	5th Seq.	pseudolyelli z. camatteanum z. radenaci z. gevreyi z. buloti z. ouenzaensis z. Early ALBIAN
	Low. Shales	Upper Sh.		4th Seq.	
Up. Carbon. Interm. Sh. Ammonite h.		3rd Seq.			
Hameima	Up. Member	Basal Shale	2nd Seq.		
	Sandst.		1st Seq.	paucicostatus z. ?	
	Low. Shales				
Serdj			Serdj		chihouiaie z. Late APTIAN

Fig. 3. Stratigraphy of the Tajerouine area and J. El Hamra (according to Chihaoui, 2009; Chihaoui et al., 2010; Latil, 2011).

Farther South, in Jebel El Hamra, this lithostratigraphic nomenclature cannot be used. Overlying the Late Aptian Serdj Formation, El Euch (1993) defined an “intermediate series”, which is overlain by the Fahdene Formation. The “intermediate series” can be divided into 5 sedimentary sequences (Chihaoui, 2009; Fig. 3).

The 1st sequence (a few meters) is made of pale grey marls capped by a massive dolomite bed, karstified at the top. The 2nd sequence (3 to 10 m) is composed of green shales overlain by an orange-coloured dolomitic bed, also karstified. For both sequences, scarce ammonites suggest an earliest Albian age (*L. tardefurcata* zone).

The 3rd sequence (8 to 15 m) comprises black shales marked by a conspicuous yellow marly bed, and capped by an orbitolinid-rich massive limestone bed, karstified at the top. Several ammonites indicate an Early Albian age (*L. tardefurcata* zone or *D. mammillatum* superzone). The 4th sequence (0.5 to 25 m) is made of fossiliferous marls with limestone beds. The ammonite fauna indicates an Early Albian age (upper part of *D. mammillatum* superzone). Finally, the 5th sequence (15 to 35 m) is lithologically comparable to the 4th one. The occurrence of various specimens of *Lyelliceras pseudolyelli* indicates a late Early Albian age (*L. pseudolyelli* zone).

The Fahdene Formation begins with a sandy, glauconitic and phosphatic condensed layer, which contains clasts, and ammonites of both Middle and Late Albian age. According to the locality, the age of the overlying marls of the basal Fahdene Formation are of early (not earliest) to middle Late Albian age (*M. pricei* to *M. inflatum* zone).

4. The Late Aptian-Albian synsedimentary deformations in Central Tunisia

Thanks to the establishment of a detailed regional stratigraphic chart (Chihaoui et al., 2010; Latil, 2011), most of the observed synsedimentary deformations can be precisely dated, and will be described in a stratigraphic order.

4.1. Around the Aptian-Albian boundary

Scarce tectonic deformations have been observed between the Late Aptian Serdj and the Early Albian Hameima formations.

Southeast of Jebel Harraba (Sidi Embarka section, Dubourdiou, 1956), the thin, uppermost reefal limestone bed of the Serdj Formation is unconformably overlain by the Hameima Formation (Fig. 4).

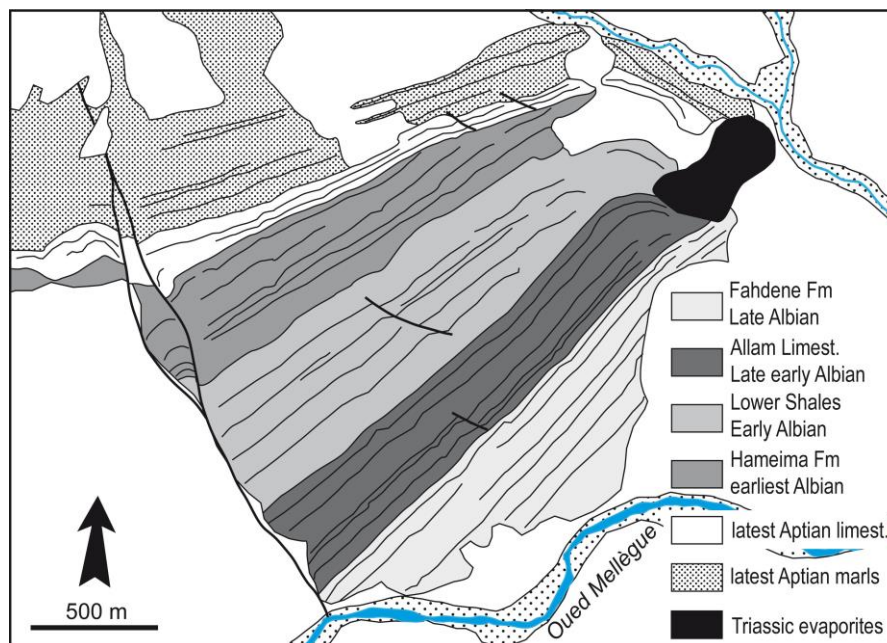


Fig. 4. Geological map of the Sidi Embarka outcrop, SW of Jebel Harraba (modified from Dubourdiou, 1956). Note the onlap of the base of the earliest Albian Hameima Fm onto the Late Aptian Serdj Fm.

This pattern suggests that the northeastern part of the Late Aptian Serdj limestone had been slightly uplifted before the earliest Albian, possibly because of deep motions of Triassic evaporites that presently crop out as a diapir, East of the area (Dubourdieu, 1956; Fig. 4). Moreover, the eastern tip of the uppermost limestone bed of the Serdj Formation is affected by small scale normal faults indicating a lowering of the southwestern compartments (Fig. 4), consistent with an uplift of eastern areas. Therefore, this slight unconformity is more likely due to an incipient halokinetic activity, rather than to the progradation of the marly deposits of the Hameima Formation.

At Jebel Jerissa, a deep paleovalley incises the uppermost bed of the Serdj Formation (Chihaoui, 2009). Although this kind of structure is commonly observed in emergent sequence boundaries, it may have been enhanced by a slight local tectonic uplift.

4.2. Lower Hameima Formation (*L. tardefurcata* zone p.p.)

The lower part of the Hameima Formation exhibits few indications of smooth tectonic movements.

Thin beds of quartz-rich sandstones are locally observed near the base of the Hameima Formation (Jebel Hameima and Jerissa), which suggests that rejuvenation of erosion occurred in remote areas floored by a crystalline basement.

At Jebel Bou El Haneche, the first minor sequence of the Hameima Formation is represented by only 0 to 0.5 m of dark, orbitolinid-rich limestones, while the overlying sequence overlaps westwards onto the top of the Serdj Formation, and thins out in the same direction (Fig. 5). This disposition indicates that the western part of this massif underwent a slight uplift around the Aptian-Albian boundary.

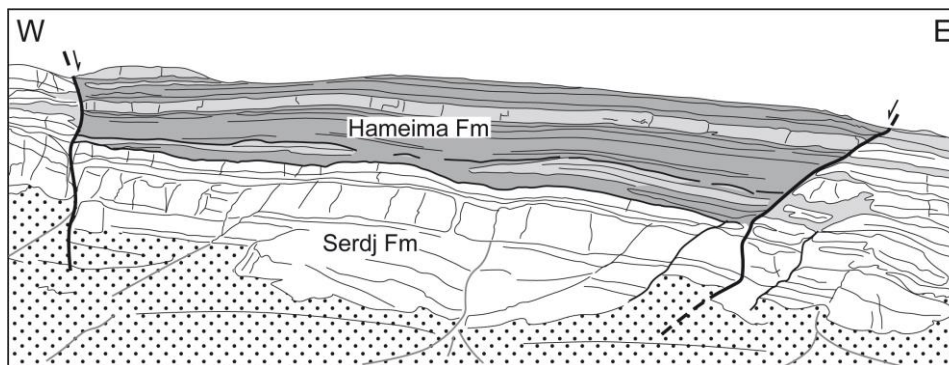


Fig. 5. Post-albian graben preserving the Hameima Formation in Jebel Boulhaneche. The lowermost beds of the Hameima Formation onlap the top of the Serdj Formation to the West (left).

In Jebel Slata, Jerissa and Bou El Haneche, karstic cracks and caves that mark the top of the upper depositional sequence of the Lower Hameima Formation are clearly driven by small-scale normal faults, the offset of which does not exceed one meter.

Finally, small-scale, fan shaped, syndimentary angular unconformities are observed in the Lower Hameima Formation of the northwestern part of Jebel Slata, which suggest a slight uplift of the northwestern part of the area (Fig. 6). Since neither breccias nor coeval faulting are observed in the neighbourhood, this feature is interpreted as resulting from a progressive tilt movement.

4.3. Upper Hameima Formation (*L. tardefurcata* zone p.p.)

Most authors agree that the source of the Hameima sandstones (“Clansayes Sandstones” of Vila et al., 2001) was located Southwest of Central Tunisia, probably in southern Algeria

(Burollet, 1956; Dubourdieu, 1956; Masse and Thieuloy, 1979; Vila, 1980). Therefore, this detrital influx does not provide information on the tectonic behaviour of the studied area.

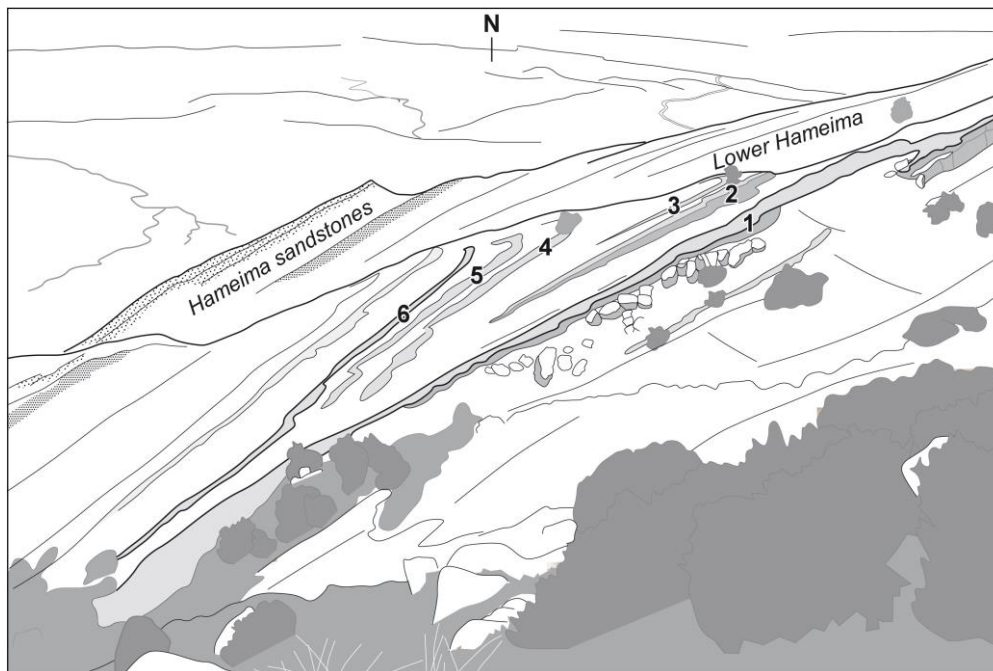


Fig. 6. Synsedimentary progressive unconformity (beds 1 to 6) in the Lower Hameima Formation (earliest Albian), observed in the northwestern part of Jebel Slata. Thickness between beds 1 and 6 evolves from about 10 m to the right, to about 2 m to the left; beds 1 and 2 deep 30° to 35° to the NW, whereas beds 5 and 6 deep 40° to 45° to the NW.

At a regional scale, the area located Northwest of Tagerouine (El Goussa, Hameima, Slata, Fig. 2) exhibits a reduced upper Hameima Formation (0 to 8 m), while the southeastern sections (Jerissa, Bou El Haneche), present a thicker sequence (15 to 20 m). This suggests that the Tagerouine region was more subsident to the Southeast at that time, and therefore, that the area was relatively uplifted to the Northwest. At a smaller scale, Chihaoui (2009) described an incised valley at the base of the Upper Hameima Formation in Jebel Slata. Deposits that infill this paleovalley were subsequently deeply karstified. This observation is consistent with the interpretation of an uplifted area located west of Tagerouine.

On the other hand, small scale synsedimentary normal faults, with offsets of about one meter, have been observed near the top of the Hameima Formation in Jebel Jerissa and Bou El Haneche. The play of these faults is associated with soft-sediment deformation, which indicate that deformation took place before lithification was completed. In Jebel Jerissa, these faults provoked a slight angular unconformity beneath the last minor sequence of the Hameima Formation, the base of which is marked by reworked limestone clasts.

In summary, synsedimentary deformations of earliest Albian age are rather smooth, and mainly consist in extensional structures, possibly associated with incipient diapir movements in the Tagerouine area.

4.4. Fahdene Formation : Lower Shales (*D. mammillatum* superzone)

In Henchir El Goussa, the lowermost part of the Fahdene Formation is marked by large scale slumpings, that provoke slight angular unconformities and thickness variations. Note that, a few kilometers from El Goussa, southwest of Guern Halfaya, Vila et al. (1998) proposed that a “salt glacier” would have emplaced during the Albian. Although we did not

find this “salt glacier” the observed deformations at El Goussa are consistent with the creation of slopes related to incipient, large scale halokinetic movements.

In the sections located Northwest of Tagerouine (Slata, Henchir El Goussa, Hameima), the sequence boundaries of the Lower Fahdene Formation contain reworked ammonites, locally phosphatised, proceeding from the upper part of the Hameima Formation. This indicates that submarine erosion locally removed several tens of meters of sediments, thus suggesting local, but significant uplifts.

In Jebel Slata, the carbonate intervals of the Lower Fahdene Formation are replaced by beds of coarse-grained, well-sorted calcarenites, with phosphatic cement, which rework open marine, shallow environment and high energy elements (rounded bioclasts, echinoid fragments, red algae ...). Moreover, in the northwestern slope of Jebel Slata, these calcarenitic beds wedge out toward the Northeast (Fig. 7). We interpret these calcarenite beds as deposited in a shallow marine area submitted to wave energy. During either storms or tectonic movements, these shallow-deposited sediments were swept away and exported to lower areas (Fig. 7). This new paleogeographic setting implies that a local relief had been created in the Jebel Slata area between deposition of the Hameima and Fahdene formations.

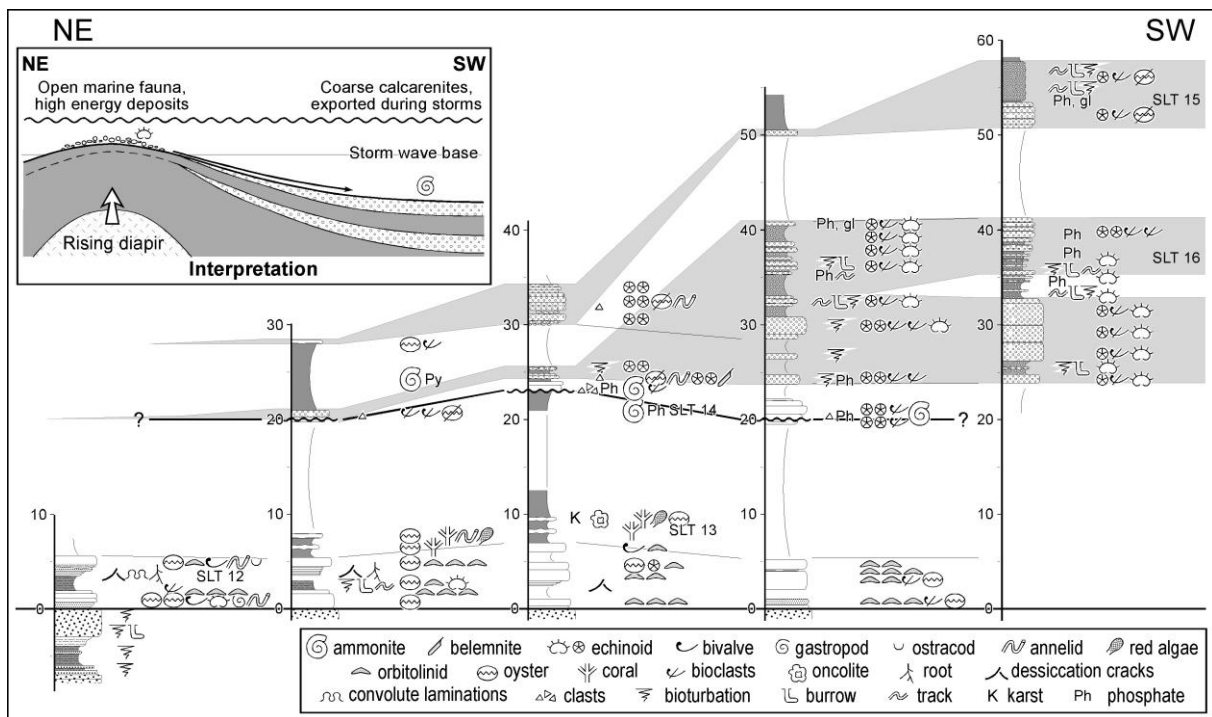


Fig. 7. Stratigraphic sections of the Lower Fahdene Formation, in the Northwestern part of Jebel Slata, showing the lateral thickening of calcarenite beds, interpreted as material exported from an uplifted area, during low sea level periods (see inset).

In this interval, neither normal faults, nor breccias have been observed in the succession. Thus, these erosions are interpreted as related to the progressive creation of reliefs and slopes. Since the tectonic regime is mostly extensional, we propose that the creation of these reliefs is related to diapiric movements (see also Smati, 1986).

While the Upper Hameima Formation was thicker to the Southeast, the Lower Fahdene is much thicker to the Northwest (Fig. 8). This new disposition implies that an inversion of the subsidence pattern occurred at a regional scale between deposition of the Hameima and Fahdene formations (i.e. during the late part of the tardefurcata zone). Considering the small-scale extensional structures observed in the deposits of this period, this tectonic movement

may be due to differential subsidence controlled by the offset of regional normal faults. However, the Slata section displays a much thinner succession, which supports the interpretation of a salt dome located below this area (Fig. 7) (see also Perthuisot et al., 1998).

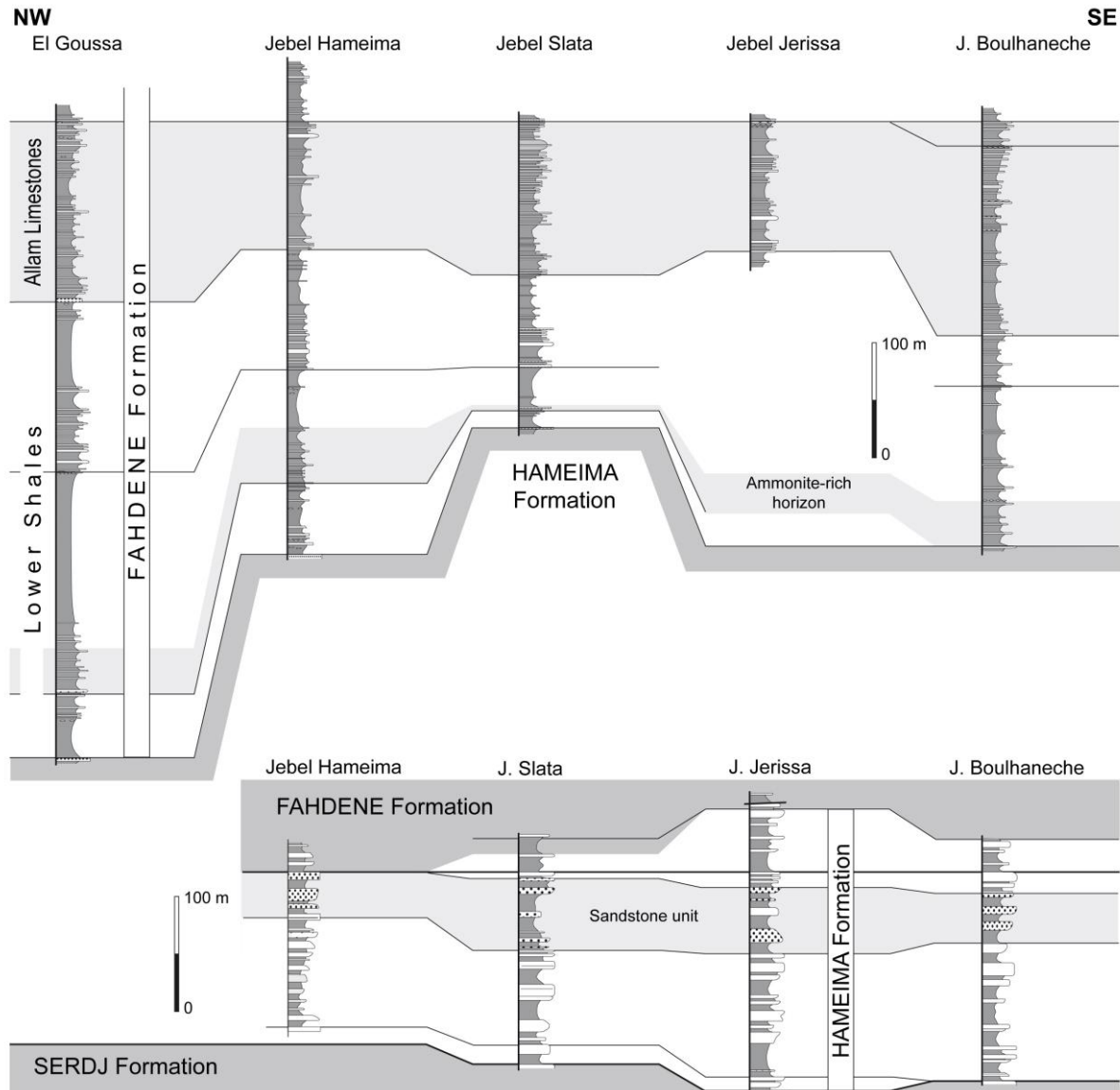


Fig. 8. Correlations of the Hameima (below) and Lower Fahdene (above) formations in the Tazerouine area. Note that the Hameima Fm is thinner toward the NW, whereas the Fahdene Fm is much thicker toward the NW.

Farther South, in Jebel El Hamra, the sediments equivalent to the Fahdene Formation (2nd sequence), are marked by large-scale slumps, due to a sliding toward the Southwest of the recently deposited shales and orange-coloured dolomites (Fig. 9). These deformations are associated with metric-scale normal faults that affect the underlying dolomites, and with the plastic deformations of the red dolomite bed. These structures (faults and folds) are sealed by the dolomitic bed that caps the unit (2nd sequence).

Higher in the section, the series of Jebel El Hamra presents significant thickness and facies variations (El Euch, 1993). The fourth depositional sequence, equivalent to the *D. mammillatum* zone, is about 25 m thick at the southern tip of the massif, and progressively wedges out northeastwards (Fig. 10), where it is only represented by a one meter-thick

phosphatic conglomerate, representing a condensation and reworking layer. This indicates that deposition took place on a slope dipping to the Southwest, and would correspond to a reinforcement of the tilt recorded by the slumps observed in the underlying beds (Fig. 9).

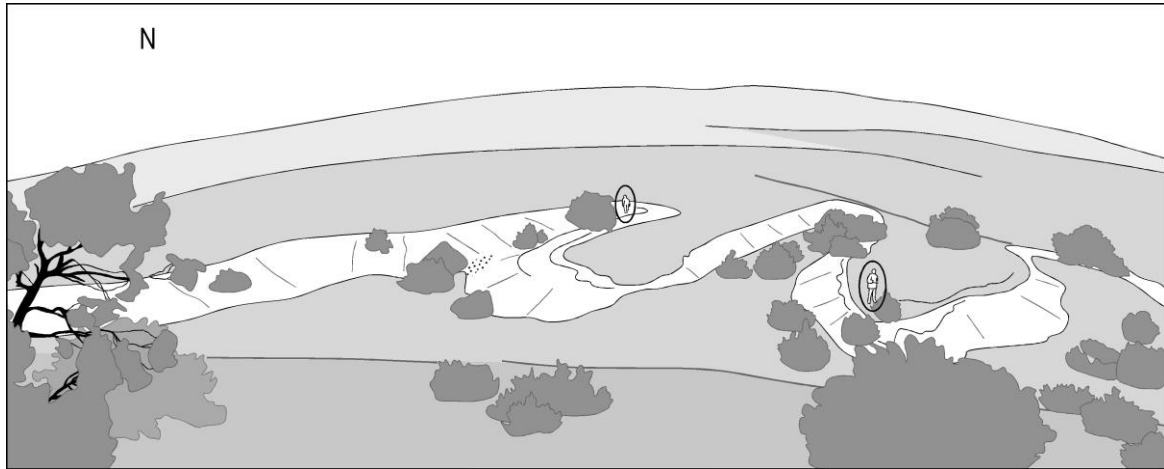


Fig. 9. Slump affecting the dolomite of the 2nd sequence of Jebel El Hamra, equivalent to the Lower Fahdene Formation. The dolomite bed (white) overlies green shales (background), and is overlain by black shales (foreground). Scale is given by the two persons.

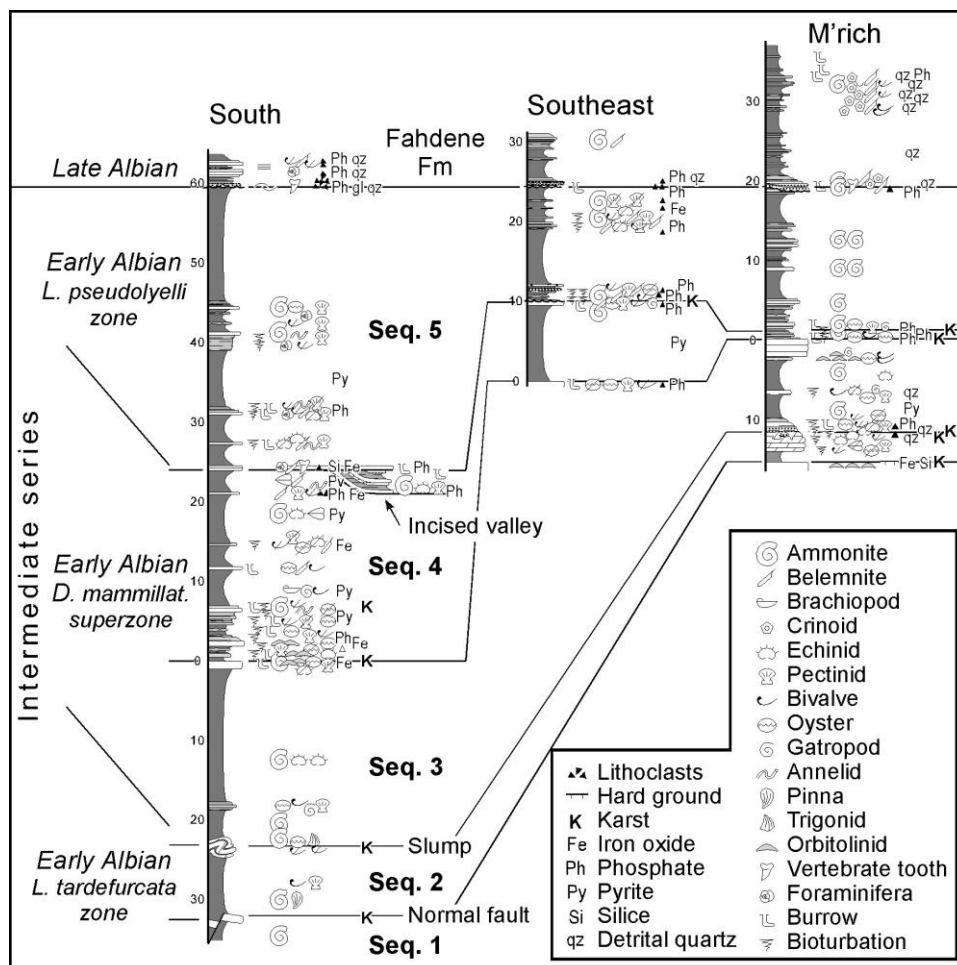


Fig. 10. The Early Albian successions along the Southeastern slope of Jebel El Hamra (location on Fig. 2). Datum is the Late Albian transgression. The 4th sequence wedges out northeastward into a thin, phosphatic condensation layer.

4.5. Fahdene Fm : Allam Limestone (end of *D. mammillatum* zone and *L. pseudolyelliceras* subzone)

In the Hameima section, reworked, phosphatised ammonites have been found as high as at the base of the “Allam Limestones”. Since these ammonites have been identified as *M. ouenzaensis*, they proceed from the top of the Hameima Formation, thus demonstrating that erosions can have removed as much as two to three hundred meters of shaly deposits from the Fahdene Formation (Lower Shales).

Farther North, Southeast of Guern Halfaya (Fig. 2), the upper part of the “Allam Limestones” contains locally metric-scale olistoliths of massive shelf limestone, associated with small clasts and boulders (Fig. 11, see also Vila et al., 1998). Moreover, these olistoliths contain ammonites that indicate that they proceed from the upper part of the Hameima Formation. This demonstrates, therefore, that deposits normally located more than three hundred meters below, were cropping out and eroded at the end of Early Albian times.

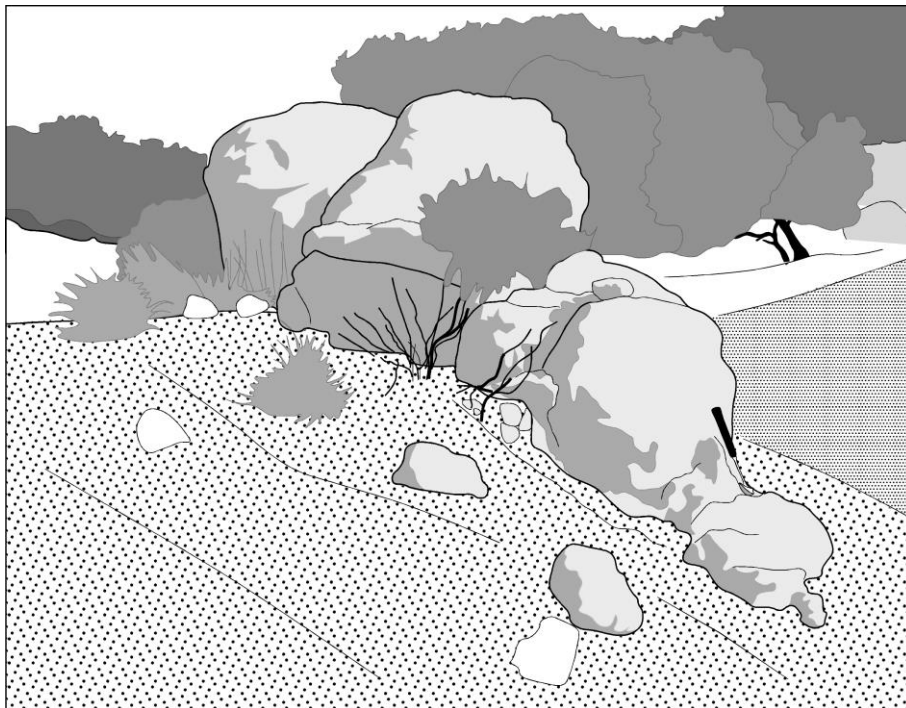


Fig. 11. Olistolith of limestone proceeding from the Hameima Fm, resedimented in the upper part of the “Allam limestones”, Southeast of Garn Halfaya. The scale is given by the hammer.

In the southern tip of Jebel El Hamra, the base of the sequence equivalent to the “Allam Limestones” is marked by a large incised valley, filled by quartz-rich, ammonite-bearing deposits of open marine environment, interpreted as a tidal channel (Fig. 10).

These observations indicate that tectonic deformations increased during the Early Albian time-span. The observed offsets of normal faults and the thickness of the removed deposits were of metric scale in the Hameima Formation or equivalent, of decametric scale in the Lower Fahdene Formation, and of hectometric scale during deposition of the Allam Limestones.

4.6. Fahdene Fm : the “Middle Albian” hiatus and the Late Albian unconformity

In the whole studied area, the top of the Allam Limestones is marked by a long-lasting hiatus, which encompasses the Middle Albian and the earliest Late Albian, and possibly the

latest Early Albian (Jaillard et al., 2005; Chihaoui et al., 2010; Latil, 2011). The overlying Late Albian deposits rest commonly with an angular unconformity on the Early Albian deposits, and the Late Albian deposits are younger as one goes to the South or Southeast.

Correlations between various sections of the Tajerouine area show that submarine erosions took place during this hiatus. As a matter of fact, in the Bou El Haneche section, the “Allam Limestones” are thicker, and exhibit an additional disconformity, which underlines a depositional sequence that is unknown in the other sections (Chihaoui, 2009 ; Fig. 8). In the Henchir El Goussa, Hameima and Slata sections, the base of the “Allam Limestones” is marked by lens-shaped, fine grained sandstone beds locally preserved in depressions within the erosional, silicified surface that marks the unconformity.

In Jebel Slata, the Late Albian transgression has been extensively studied and described (Smati, 1986; Perthuisot et al., 1988; Vila et al., 2001; Chihaoui, 2009). Its base is locally marked by conglomerates, which can be observed in the lower part of the Late Albian shales. The conglomerates mainly rework Albian and Late Aptian limestones, and the angular unconformity locally exceeds 90° (Perthuisot et al., 1998; Fig. 12).

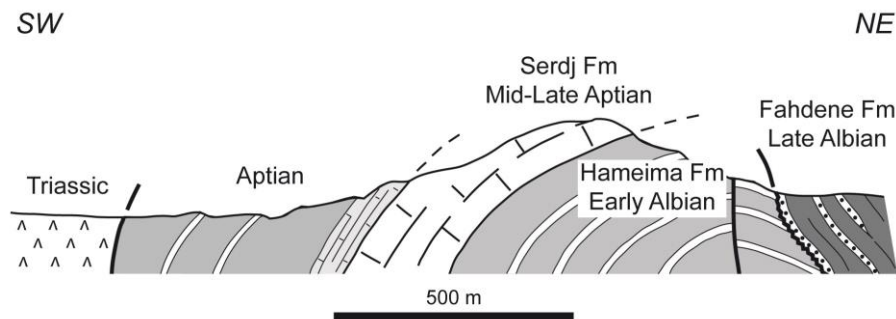


Figure 12. Structural section across the southern part of Jebel Slata (modified from Perthuisot et al., 1998), showing a strong unconformity of Late Albian deposits on inverted Early Albian strata.

Farther south, in Jebel El Hamra, the equivalent of the “Allam Limestones” (5th Sequence) is preserved in the Southeastern part, thanks to a NW-trending normal fault that determines a half graben. The upper part of this sequence is marked by a quartz-rich, phosphatic sandstone bed that contains both the reworked ammonite *Lyelliceras lyelli* of early Middle Albian age, and a *Mortoniceras* sp. of Late Albian age, thus demonstrating the hiatus of the Middle Albian (Fig. 10). The play of this fault is sealed by crinoid-rich beds of Late Albian age.

Therefore, the deformations recorded during the Middle Albian hiatus are much more important than those observed during deposition of the Early Albian sediments. This suggests that synsedimentary deformation increased throughout the Early Albian, and culminated during the Middle Albian.

5. Discussion

5.1. Extension and halokinetic activity

Most authors have related the Albian deformation to halokinetic activity. These relations are, however, complex. If halokinetic movements triggered Albian deformations, the latter should show distinct, local strain regimes, and should be diachronous. However, on one hand, the initiation of synsedimentary deformation seems to be roughly synchronous in all the studied areas, which suggests that they are related to regional tectonic processes, rather than

to local diapiric movement. On the other hand, many deformations are observed in areas where no diapirs are known presently (Jebel Hameima, Jerissa, Bou El Haneche), and comparable structures have been described in the Chotts area, where Triassic evaporites are reduced or absent (*e.g.* Abbes and Tlig, 1991 ; Louhaichi and Tlig, 1993 ; Barrier et al., 1993 ; Bouaziz et al., 2002). This indicates that deformations were, at least locally, independent on halokinetic activity. Finally, many authors determined that extension was dominantly orientated ENE-WSW to NE-SW during the Aptian-Albian (Soyer and Tricart, 1987; Martinez et al., 1991; Barrier et al., 1993 ; Piqué et al., 1998 ; Bouaziz et al., 2002 ; Rigane et al., 2010), which suggests that deformations were related to a regionally consistent extensional tectonic regime, rather than to randomly distributed perturbations, as would be expected from isolated salt movements. Therefore, even though local diapirism can have played a role, we propose that diapirism is not the cause, but rather a consequence of the Early to Middle Albian tectonic activity, in agreement with studies carried out in numerous salt provinces (Jackson and Vendeville, 1994) and with theoretical models (Hudec and Jackson, 2007). Moreover, an extensional regime may lead to local thermal heating, which favors evaporite mobility. In our opinion, the Early Albian extensional tectonic event triggered local halokinetic movements, which culminated in the Middle Albian.

Extensional normal faults and tilted blocks seem to dominate in the southern part of the studied area (Hameima, Bou el Haneche), whereas synsedimentary deformations are represented by large-scale slumpings, progressive uplifts and significant submarine erosions in the northern area (Slata, Hameima, Henchir El Goussa, Guern Halfaya). This difference in deformation style is probably due in part to the fact that in the northern areas, normal faults are difficult to identify in the thick accumulations of Early Albian shales. However, this difference can also indicate that diapirism was more active and began earlier in the north, or that Triassic evaporites were thicker there.

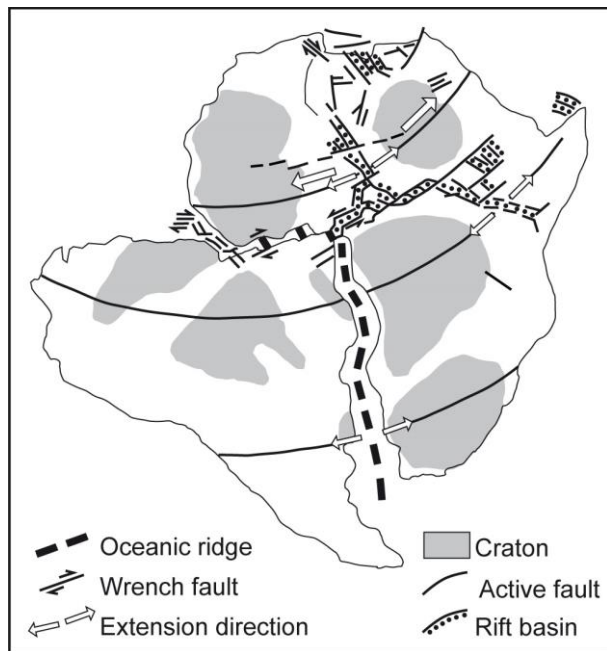
5.2. Geodynamic interpretation

The Albian tectonic event has been interpreted as resulting, either from the evolution of the Tethyan Ocean, or from the opening of the Atlantic Ocean at equatorial latitude.

In the first interpretation, the tectonic regime recorded in Tunisia would result both, from the sinistral play of the Gibraltar transform zone and from the opening of the “Mesogean Sea” that separated Tunisia from Apulia (Smati, 1986 ; Ouali et al., 1986 ; Martinez et al., 1991 ; Zouari et al., 1999 ; Ouali, 2007). However, the Gibraltar transform zone was active since the Jurassic, and the opening of the “Mesogean Sea” occurred before the Albian and continued during the Late Cretaceous (Dercourt et al., 1985 ; Lemoine et al., 1986 ; Stampfli and Marchant, 1997). As a consequence, even though these processes may be compatible with the tectonic stress recorded in Tunisia, they cannot explain the Early Albian tectonic crisis and the acme of deformations in the Middle Albian.

The final opening of the Atlantic Ocean at equatorial latitudes occurred in the Late Aptian-Early Albian (Basile et al., 2005), and more precisely between 112 and 106 Ma (Early Albian) according to Moulin et al. (2010). It was associated with an extensional tectonic regime in most of the northern part of Africa in Late Aptian-Early Albian times (Guiraud and Maurin, 1992 ; Guiraud et al., 2005 ; Bumby et Guiraud, 2005). This latter tectonic crisis resulted in about 40 km of extension in Central North Africa, triggered the opening of a series of extensional basins running from the Benoue Trough in Nigeria and Cameroon to the Sirte Basin in Lybia, and is marked by a ENE-WSW to NE-SE trending extensional tectonic regime (Guiraud et al., 2005; Moulin et al., 2010; Fig. 13). Therefore, this event is coeval with the synsedimentary deformations observed in Tunisia, and its consequences are compatible

with the ENE-WSW extensional regime observed in Tunisia during Albian times (*e.g.* Barrier et al., 1993; Ouali, 2007).



In summary, although the geodynamic evolution of the Tethyan realm may have contributed to the extensional regime observed in Tunisia, we propose that the latter is mainly due to the Albian rifting of the South Atlantic Ocean, which began with an incipient rifting through the northern part of Africa, before to eventually breakup between northeastern Brazil and western Africa (Fig. 13).

Figure 13. Tectonic regime of Africa during the Albian (after Guiraud et al., 2005).

6. Summary and conclusion

The biostratigraphic, sedimentologic and tectonic studies of the Albian deposits of Central Tunisia provided the following results.

- The classical Mid-Cretaceous tectonic event of Tunisia, sometimes referred to as the “Aptian crisis”, is actually of Early to Middle Albian age,
- The intensity of deformation increased during the Early Albian, and seemed to reach an acme during the Middle Albian, marked by a regional, long-lasting sedimentary hiatus,
- Synsedimentary deformations began roughly at the same time, and exhibit the same increasing intensity, in all the studied massifs, thus suggesting that diapirism was not the cause of the deformations. Halokinetic movements may be rather regarded as a consequence of the extensional deformations.
- The nature and distribution of the synsedimentary features point to extensional tectonics. Normal faults and block tilting dominated to the South, whereas slope creation, slidings and submarine erosions were dominant to the North, suggesting that diapirism was more important there.
- The Early to Middle Albian age of the synsedimentary deformation in Tunisia suggests that they are related to the final stage of Atlantic Ocean opening, which induced a NE- to ENE- trending extensional regime through the northern part of the African continent.

Acknowledgements

This work has been carried out thanks to a scientific joint project between the Sfax and Grenoble universities, funded by the ministry of foreign affair of Tunisia and by the ministry of foreign and European affairs of France (Project Utique 07G1008). We thank D. Gasquet (Chambéry), H. Negra (Tunis), J. Tour (Sfax) and A.-S. Susperregui (Grenoble) for fruitful discussions and for participation to field work. The final version of this paper was emended by constructive remarks of two anonymous reviewers.

References

- Abbes, A., Tlig, S., 1991. Tectonique précoce et sédimentation de la série crétacée dans le Bassin des Chotts (Tunisie du Sud). *Géologie Méditerranéenne*, **18**, 149-161.
- Barrier, E., Bouaziz, S., Angelier, J., Creuzot, G., Ouali, J., Tricart, P., 1993. Mésozoic paleostress evolution in the Saharian platform (southern Tunisia). *Geodinamica Acta*, **6**, 39-57.
- Basile, C., Mascle, J., Guiraud, R., 2005. Phanerozoic geological evolution of the Equatorial Atlantic Domain. *Journal of African Earth Sciences*, **43**, 275-282.
- Bishop, W.F., 1975. Geology of Tunisia and adjacent parts of Algeria and Libya. *American Association of Petroleum Geologists Bulletin*, **59**, 413-450.
- Bismuth, H., 1973. Réflexions stratigraphiques sur l'Albo-Aptien dans la région des djebels Douleb et Semmama et son environnement (Tunisie du Centre-Nord). *Annales des Mines et de la Géologie, Livre Jubilaire M. Solignac*, **6**, 179-212, Tunis.
- Bismuth, H., Boltenhagen, C., Donze, P., Le Fèvre, J., Saint-Marc, P., 1981. Le Crétacé moyen et supérieur du djebel Semmama (Tunisie du Centre-Nord); microstratigraphie et évolution sédimentologique. *Bull. Centres Rech. Explor.-Prod. Elf-Aquitaine*, **5**, 193-267.
- Bismuth, H., Boltenhagen, C., Donze, P., Le Fèvre, J., Saint-Marc, P., 1982. Etude sédimentologique et biostratigraphique du Crétacé moyen et supérieur du Djebel Semmama (Tunisie du Centre Nord). *Cretaceous Research*, **3**, 171-185.
- Bouaziz, S., Barrier, E., Soussi, M., Turki, M., Zouari, H., 2002. Tectonic evolution of the northern African margin in Tunisia from paleostress data and sedimentary record. *Tectonophysics*, **357**, 227-253.
- Bumby, A.J., Guiraud, R., 2005. The geodynamic setting of the Phanerozoic basins of Africa. *Journal of African Earth Sciences*, **43**, 1-12.
- Burollet, P.F., 1956. Contribution à l'étude stratigraphique de la Tunisie Centrale. *Annales des Mines et de la Géologie*, **18**, 350 pp., 22 pl., Tunis.
- Chihaoui, A., 2009. *La transgression albiennne dans la région de Tajerouine en Tunisie Centrale : Stratigraphie, sédimentologie et tectonique synsédimentaire*. Thesis Universities of Grenoble and Sfax, 289 p.
- Chihaoui, A., Jaillard, E., Latil, J.-L., Susperregui, A.-S., Touir, J., Ouali, J., 2010. Stratigraphy of the Hameima and Lower Fahdene formations in the Tajerouine area (Northern Tunisia). *Journal of African Earth Sciences*, **58**, 387-399.
- Dercourt, J., Zonenshain, L.P., Ricou, L.-E., Kazmin, V.G., Le Pichon, X., Knipper, A.L., Grandjacquet, C., Sbertshikov, I.M., Geyssant, J., Lepvrier, C., Pechersky, D.H., Boulin, J., Sibuet, J.-C., Savostin, L.A., Sorokhtin, O., Westphal, M., Bazhenov, M.L., Lauer, J.P., Biju-Duval, B., 1986. Geological evolution of the Tethys belt from the Atlantic to the Pamir since the Lias. In : J. Aubouin, X. LE Pichon, Monin, S., Eds., Evolution of the Tethys. *Tectonophysics*, **123**, 241-315, 10 plates.
- Dubourdiou, G., 1956. Etude géologique de la région de l'Ouenza (Confins Algéro-Tunisiens). *Publications du Service de la Carte Géologique d'Algérie*, **10**, 659 p.
- El Euch, H., 1993. *La Tunisie du Centre-Ouest de l'Aptien à l'Actuel : Tectonique coulissante, dynamique sédimentaire associée et évolution du champ de contraintes Mio-Plio-Quaternaire*. PhD thesis University of Tunis II, 261 pp.
- Fournié, D., Pacaud, M., 1973. Esquisses sédimentologiques et paléogéographiques sur le Crétacé inférieur de Tunisie, du Berriasien au Barrémien. *Livre Jubilaire M. Solignac, Annales Mines Géol.*, **26**, 149-168.
- Frizon de Lamotte, D., Saint Bezar, B., Bracène, R., Mercier, E., 2000. The two main steps of the Atlas building and geodynamics of the western Mediterranean. *Tectonics*, **19**, 740-761.
- Frizon de Lamotte, D., Raulin, C., Mouchot, N., Wrobel-Daveau, J.-C., Blanpied, C., Ringenbach, J.-F., 2011. The southernmost margin of the Tethys realm during the Mesozoic and Cenozoic : Initial geometry and timing of the inversion processes. *Tectonics*, **30**, TC3002.
- Guiraud, R., Maurin, J.-C., 1992. Early Cretaceous rifts of Western and Central Africa: an overview. *Tectonophysics*, **213**, 153-168.
- Guiraud, R., Bosworth, W., Thierry, J., Delplanque, A., 2005. Phanerozoic geological evolution of Northern and Central Africa: An overview. *Journal of African Earth Sciences*, **43**, 83-143.

- Hudec, M.R., Jackson, M.P.A., 2007. Terra infirma: Understanding salt tectonics. *Earth-Science Reviews*, **82**, 1-28.
- Jaillard, E., Latil, J.-L., Echihaoui, A., Zghal, I., 2005. Albian sedimentation in the Tadjerouine area. Livret-guide excursion, Aptian-Turonian events in Central Tunisia. *Géologie Alpine, série spéciale*, **5**, 105-124.
- Jackson, M.P.A., Vendeville, B.C., 1994. Regional extension as a geological trigger for diapirism. *Geological Society of America Bulletin*, **106**, 57-73.
- Latil, J.-L., 2011. Lower Albian ammonites from Central Tunisia and adjacent areas of Algeria. *Revue de Paléobiologie, Genève*, **30**, 321-429.
- Lemoine, M., Bas, T., Arnaud-Vanneau, A., Arnaud, H., Dumont, T., Gidon, M., Bourbon, M., de Graciancky, P.-C., Rudkiewicz, J.-L., Mégard-Galli, J., Tricart, P., 1986. The continental margin of the Mesozoic Tethys in the Western Alps. *Marine and Petroleum Geology*, **3**, 179-199.
- Louhaichi, M.A., Tlig, S., 1993. Tectonique synsédimentaire des séries crétacées post-barrémiennes au Nord-Est de la Chaîne des Chotts (Tunisie méridionale). *Géologie Méditerranéenne*, **20**, 53-74.
- Martinez, C., Chikhaoui, M., Truillet, R., Ouali, J., Creuzot, G., 1991. Le contexte géodynamique de la distension albo-aptienne en Tunisie septentrionale et centrale : structuration éocénocène de l'Atlas tunisien. *Eclogae geologicae Helvetiae*, **84**, 61-82.
- Masse, J.-P., Thieuloy, J.-P., 1979. Précisions sur l'âge des calcaires et des formations associées de l'Aptien sud-constantinois (Algérie). Conséquences paléogéographiques. *Bulletin de la Société géologique de France*, **7**, 65-71.
- Masse, J.-P., Philip, J., Camoin, G., 1995. The cretaceous Tethys. In: the Ocean Basins and Margins, vol. 8: *The Tethys Ocean*, A.E.M. Nairn, et al., eds, 215-236. Plenum Press Publ., New York.
- Moulin, M., Aslanian, D., Unternehr, P., 2010. A new starting point for the South and Equatorial Atlantic Ocean. *Earth Science Reviews*, **98**, 1-37.
- M'Rabet, A., 1981. *Stratigraphie, sédimentation et diagenèse carbonatée des séries du Crétacé inférieur de Tunisie Centrale*. Doctorat ès Sciences, Université Paris XI-Orsay, 540 pp.
- M'Rabet, A., Mejri, F., Burollet, P.F., Memmi, L., Chandoul, H., 1995. Catalog of type sections in Tunisia: Cretaceous. *Entreprise Tunisienne des Activités Pétrolières-ETAP, Mémoire 8^a*, 123 p.
- Ouali, J., 2007. *Importance du réseau rhéomatique dans la tectonique de la Tunisie Atlasique à travers l'étude de l'axe Nord-Sud*. Thèse Doctorat ès Sciences, Université Tunis-El Manar, 415 pp.
- Ouali, J., Martinez, C., Khessibi, M., 1986. Caractères de la tectonique crétacée en distension au Jebel Kebar (Tunisie centrale). *Géodynamique*, **1**, 3-12, Orstom-Paris.
- Perthuisot, V., Rouvier, H., Smati, A., 1988. Style et importance des déformations anté-uraconiennes dans le Maghreb oriental: exemple du diapir du Jebel Sata (Tunisie centrale). *Bulletin de la Société géologique de France*, (8) **4**, 391-398.
- Perthuisot, V., Bouzenoune, A., Hatira, N., Henry, B., Laatar, E., Mansouri, A., Rouvier, H., Smati, A., Thibieroz, J., 1998. Les diapirs du Maghreb oriental : part des déformations alpines et des structures initiales crétacées et éocènes dans les formes actuelles. *Bulletin de la Société géologique de France*, **170**, 57-65.
- Piqué, A., Brahim, L.A., Ouali, R.A., Amrhar, M., Charroud, M., Gourmelen, C., Laville, E., Rekhiss, F., Tircart, P., 1998. Evolution structurale des domaines atlasique du Maghreb au Méso-Cénozoïque ; le rôle des structures héritées dans la déformation du domaine atlasique de l'Afrique du Nord. *Bulletin de la Société géologique de France*, **169**, 797-810.
- Rigane, A., Feki, M., Gourmelen, C., Montacer, M., 2010. The « Aptian crisis » of the southern margin: new tectonic data in Tunisia. *Journal of African Earth Sciences*, **57**, 360-366.
- Robaszynski, F., Amédéo, F., González Donoso, J.-M., Linares, D., 2008. The Albian (Vraconnian)-Cenomanian boundary at the western Tethyan margin (central Tunisia and southeastern France). *Bull. Soc. géol. France*, **179**, 245-266.
- Smati, A., 1986. Les gisements de Pb-Ba et de Fe du Jebel Sata (Tunisie du Centre-Nord): Minéralisations épigénétiques dans le Crétacé néritique de la bordure d'un diapir de Trias. Gisements de Sidi Amor Ben Salem et de Sata-Fer. Thèse 3^e cycle Université P. et M. Curie (Paris VI), 250 pp., 5 pl.
- Souquet, P., Peybernès, B., Saadi, J., Ben Youssef, M., Ghanmi, M., Zarbout, M., Chikhaoui, M., Kamoun, F., 1997. Séquences et cycles d'ordre 2 en régime extensif et transtensif: exemple du Crétacé inférieur de l'Atlas tunisien. *Bulletin de la Société géologique de France*, **168**, 373-386.

- Soyer, C., Tricart, P., 1987. La crise aptienne en Tunisie centrale : approche paléostratigraphique aux confins de l'Atlas et de l'Axe Nord-Sud. *Comptes Rendus à l'Académie des Sciences, Paris*, **305**, (II), 301-305.
- Stampfli, G., Marchant, R.H., 1997. Geodynamic evolution of the Tethyan margins of the Western Alps. In: *Deep structure of the Swiss Alps: results of NRP 20*, O.A. Pfiffner, P. Lehner, P. Heirzmann, S. Mueller, A. Steck, eds., 223-240, Birkhäuser publ., Basel.
- Vila J.-M., 1980. *La chaîne alpine d'Algérie orientale et des confins algéro-tunisiens*. Thèse Doctorat ès Sciences, Université Pierre et Marie Curie, Paris 6, 665 pp., 3 vol, 40 pl.
- Vila, J.-M., Ben Youssef, M., Bouhlef, S., Ghanmi, M., Kassaâ, S., Miaadi, F., 1998. Tectonique en radeaux au toit d'un glacier de sel sous-marin albien de Tunisie du Nord-Ouest: exemple du secteur minier de Guern Halfaya. *Comptes Rendus à l'Académie des Sciences, Paris, Sciences de la terre et des planètes*, **327**, 563-570.
- Vila, J.-M., Ghanmi, M., Ben Youssef, M., 2001. Découverte d'Albien inférieur à floridées et d'Albien inférieur et moyen marneux, dans le dôme de sel-pli de l'ensemble Djebel el Ajered, Henchir Adjerat Saouda, Djebel el Hamra (ouest de la Tunisie) : comparaisons, conséquences, essai de rétrotectonique salifère. *Bulletin de la Société d'Histoire Naturelle de Toulouse*, **137**, 57-67.
- Zghal, I., 1994. *Etude microbiostratigraphique du Crétacé inférieur de la Tunisie du Centre Ouest*. Thesis, University of Tunis II, 304 pp.
- Zghal, I., Ben Hadjali, N., Razgallah, S., Bismuth, H., 1997. Foraminifères et Ostracodes de l'Aptien-Albien du Jebel Hameima (region de Tadjerouine, Tunisie) : Biostratigraphie, paleoécologie. *Africa Geoscience Review*, **4**, 361-372.
- Zghal, I., Arnaud-Vanneau, A., 2005. The Hameima Formation. Aptian-Turonian events in Central Tunisia. Field trip guidebook, *Géologie Alpine, sér. Spéc. n° 5*, 101-104.
- Zouaghi, T., Ferhi, I., Bédir, M., Ben Youssef, M., Gasmi, M., Inoubli, M.H., 2011. Analysis of Cretaceous (Aptian) strata in central Tunisia, using 2D seismic data and well logs. *Journal of African Earth Sciences*, **61**, 38-61.
- Zouari, H., Turki, M.M., Delteil, J., Stephan, J.-F., 1999. Tectonique transtensive de la paléomarge tunisienne au cours de l'Aptien-Campanien. *Bulletin de la Société géologique de France*, **170**, 295-301.