



**HAL**  
open science

## Do neuroplasticity and genetic factors contribute to cognitive training in children?

Iris Menu, Qin He, Julie Victor, Gabriela Rezende, Lorna Le Stanc, Julie Vidal, Catherine Oppenheim, Edouard Duchesnay, Boris Chaumette, Olivier Houdé, et al.

### ► To cite this version:

Iris Menu, Qin He, Julie Victor, Gabriela Rezende, Lorna Le Stanc, et al.. Do neuroplasticity and genetic factors contribute to cognitive training in children?. OHBM ( Organization for Human Brain Mapping) 2022 Annual Meeting, Jun 2022, Glasgow, United Kingdom. hal-04045235

**HAL Id: hal-04045235**

**<https://hal.science/hal-04045235v1>**

Submitted on 24 Mar 2023

**HAL** is a multi-disciplinary open access archive for the deposit and dissemination of scientific research documents, whether they are published or not. The documents may come from teaching and research institutions in France or abroad, or from public or private research centers.

L'archive ouverte pluridisciplinaire **HAL**, est destinée au dépôt et à la diffusion de documents scientifiques de niveau recherche, publiés ou non, émanant des établissements d'enseignement et de recherche français ou étrangers, des laboratoires publics ou privés.

# Do neuroplasticity and genetic factors contribute to cognitive training in children?

Iris MENU<sup>1</sup>, Qin HE<sup>2</sup>, Julie VICTOR<sup>3</sup>, Gabriela REZENDE<sup>1</sup>, Lorna LE STANC<sup>1</sup>, Julie VIDAL<sup>1</sup>, Catherine OPPENHEIM<sup>2</sup>, Edouard DUCHESNAY<sup>3</sup>, Boris CHAUMETTE<sup>2</sup>, Olivier HOUDÉ<sup>1,4</sup>, Grégoire BORST<sup>1,4,\*</sup>, & Arnaud CACHIA<sup>1,2,\*</sup>

<sup>1</sup>Université de Paris, LaPsyDÉ, CNRS, Paris, F-75005, <sup>2</sup>Université de Paris, IPNP, INSERM, Paris, F-75005, <sup>3</sup>Université Paris-Saclay, CEA, CNRS, Neurospin, Baobab, Gif-sur-Yvette, F-91191, <sup>4</sup>Institut Universitaire de France, Paris, France

\*Equal contribution

Contact: iris.menu@hotmail.fr / arnaud.cachia@u-paris.fr

## Introduction

### Inhibitory control (IC)

- important for academic achievement, physical and mental health (Diamond, 2013)
- can be improved with cognitive training programs (e.g., Diamond & Lee, 2011; Jaeggi et al., 2011)

### Factors contribute to cognitive training gains

- basal cognitive level (Karchach & Unger, 2014)
- brain activity/anatomy (Baniqued et al., 2019; Chaddock-Heyman et al., 2020)
- genetic factors (Leckie et al., 2014)

**Aim of this study : investigate the genetic, cerebral and cognitive factors contributing to the receptivity of IC training**

## Material & methods

### Brain anatomy (pre- and post-training)

- Grey matter volumes in regions of interest (ROI) of the IC network

### Cognition (pre- and post-training)

- color-word Stroop task (Stroop interference)
- stop signal task (stop signal reaction time, SSRT)

### Genes (saliva sample, pre-training)

- Polygenic risk score (PRS) calculated with the summary statistics of UK Biobank GWAS (N=84,259) related to IC (Trail Making Test, TMT).

### Multilevel Structural Equation Model (SEM):

Test simultaneously and globally a set of *a priori* defined hypothetical relationships, combining :

- 2 latent change score models (LCS; Kievit et al., 2018; McArdle, 2009) to investigate training-related changes at both cognitive and brain levels (in yellow)
- 2 mediation models to investigate whether the genetic effect on cognition was mediated by the grey matter volume baseline (in blue) and change (in green)

### Model selection for the ROI based on :

- specific IC-training effect
- good SEM fit indices
- significant training-related cognitive changes

## Results

### Raw grey matter volume (without spatial normalization)

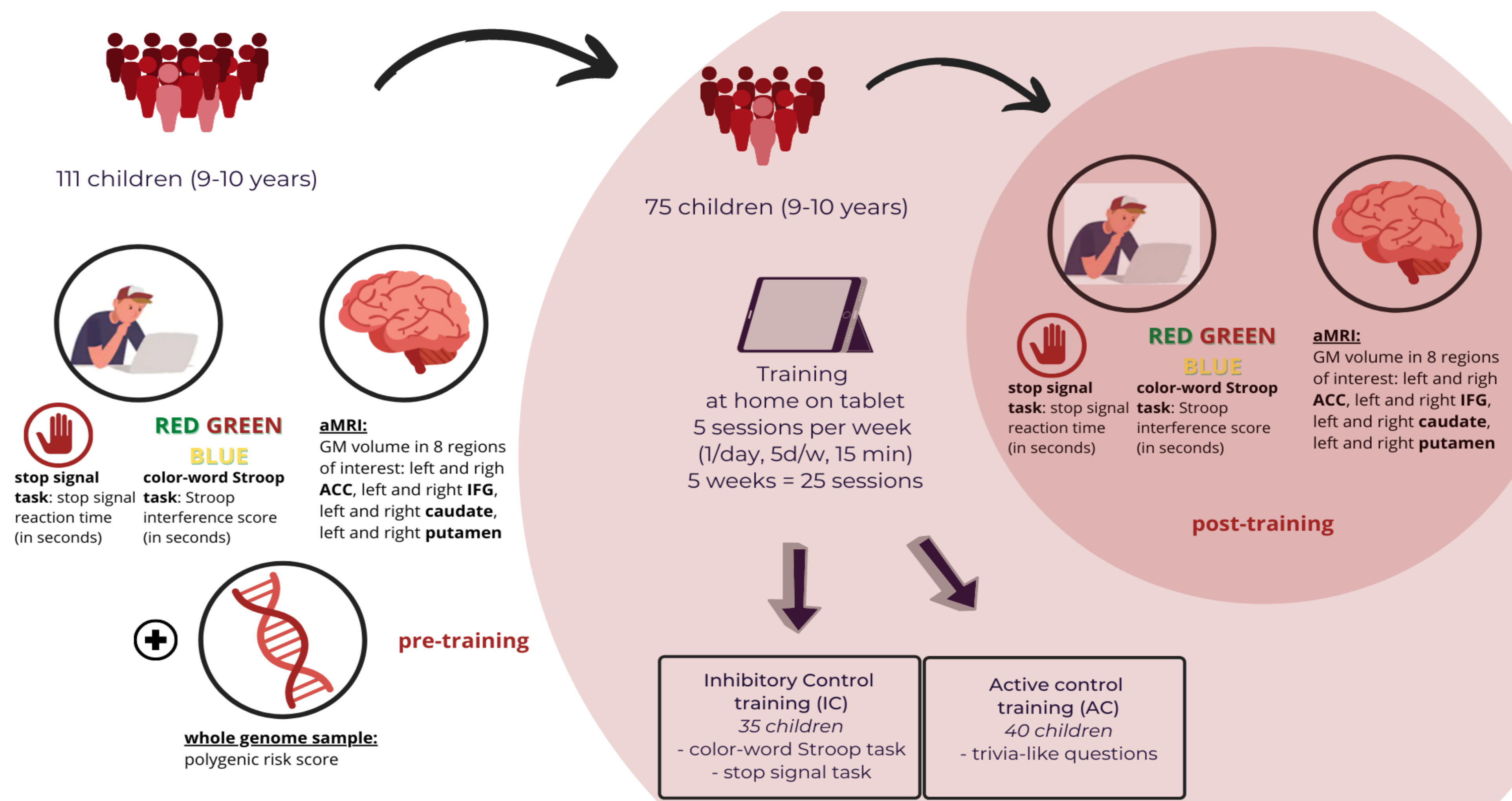
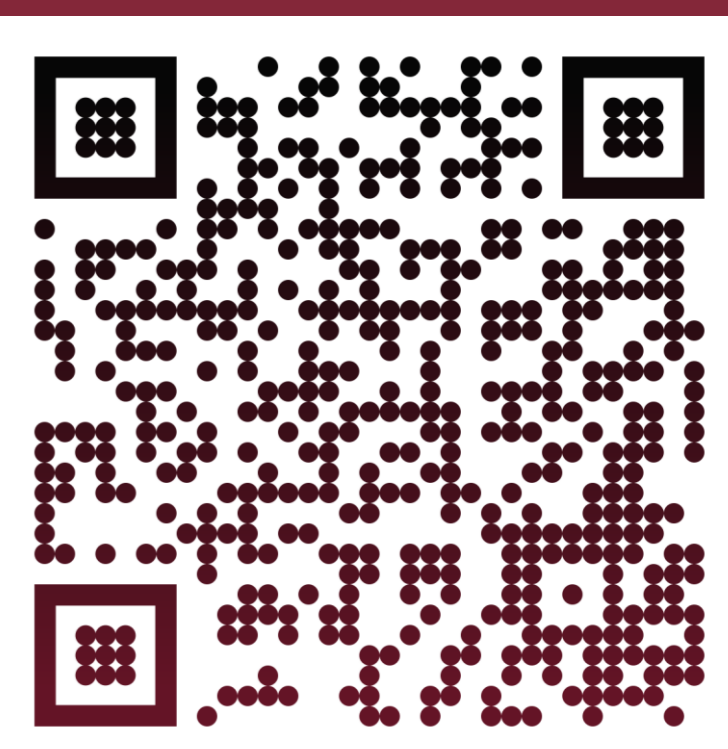
- **IC training:** IC changes depend on genetic (PRS), brain (basal and changes of left ACC volume) and cognitive (baseline SSRT) features
- **Control training:** IC changes only depend on the cognitive (baseline SSRT) features

### Normalized grey matter volumes (with spatial normalization to MNI)

- **IC training:** IC changes depend on brain (basal and changes of left Putamen volume) and cognitive (basal SSRT) features
- **Control training:** IC changes depend only explained on the cognitive (baseline SSRT) feature

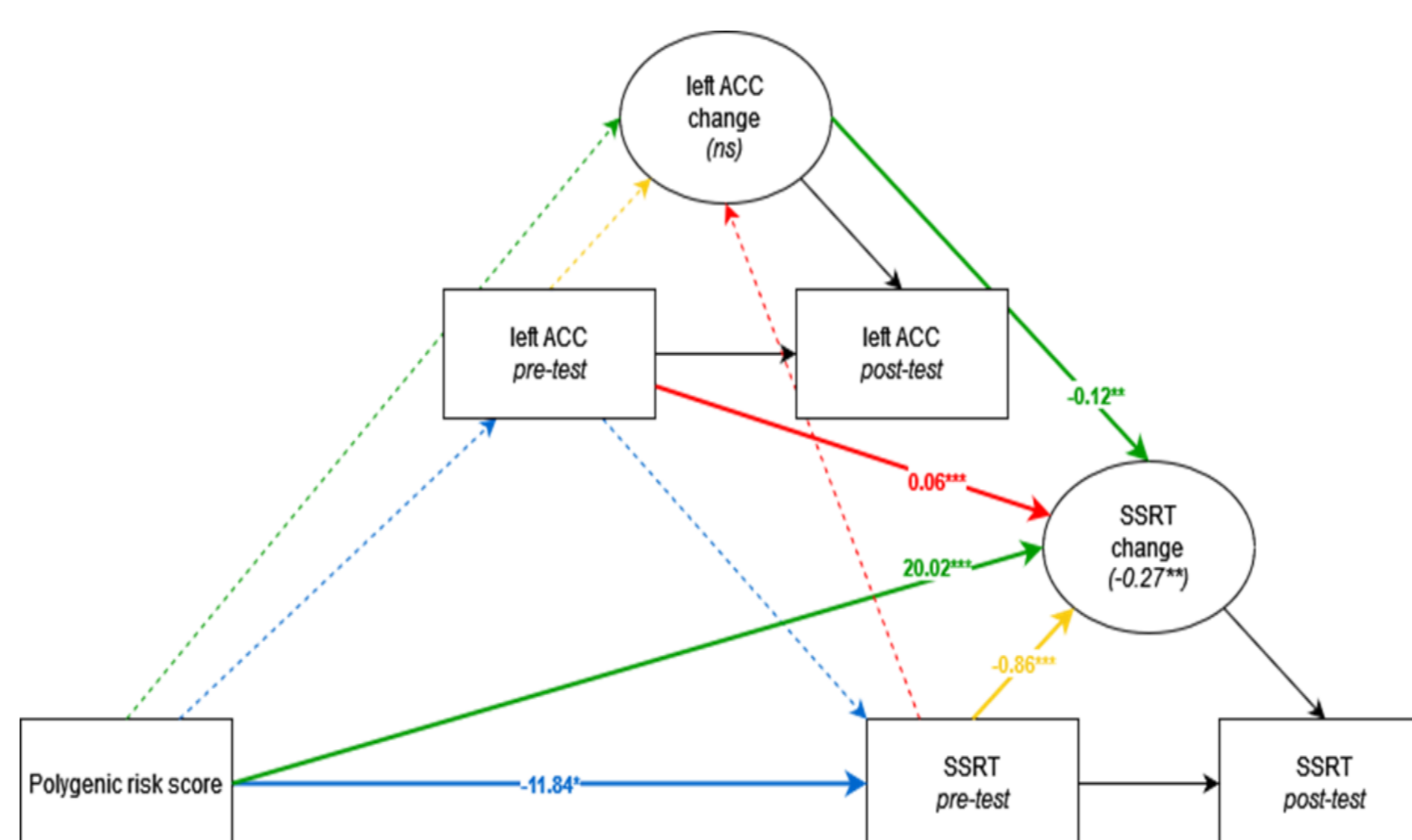
**References:** Baniqued, P. L., et al. (2018). *Frontiers in Aging Neuroscience*. Chaddock-Heyman, L., et al. (2020). *Frontiers in Human Neuroscience*. Diamond, A. (2013). *Annual Review of Psychology*. Diamond, A., et al. (2011). *Science*. Jaeggi, S. M., et al. (2011). *Proceedings of the National Academy of Sciences*. Karchach, J., et al. (2014). *Frontiers in Psychology*. Kievit, R. A., et al. (2018). *Developmental Cognitive Neuroscience*. Leckie, R. L., et al. (2014). *Frontiers in Human Neuroscience*. McArdle, J. J. (2009). *Annual Review of Psychology*.

➔ Training-relative cognitive changes depends on the interrelation of factors at different levels: molecular (genetics), neural (basal and change of regional grey matter volumes) and cognition (basal level)

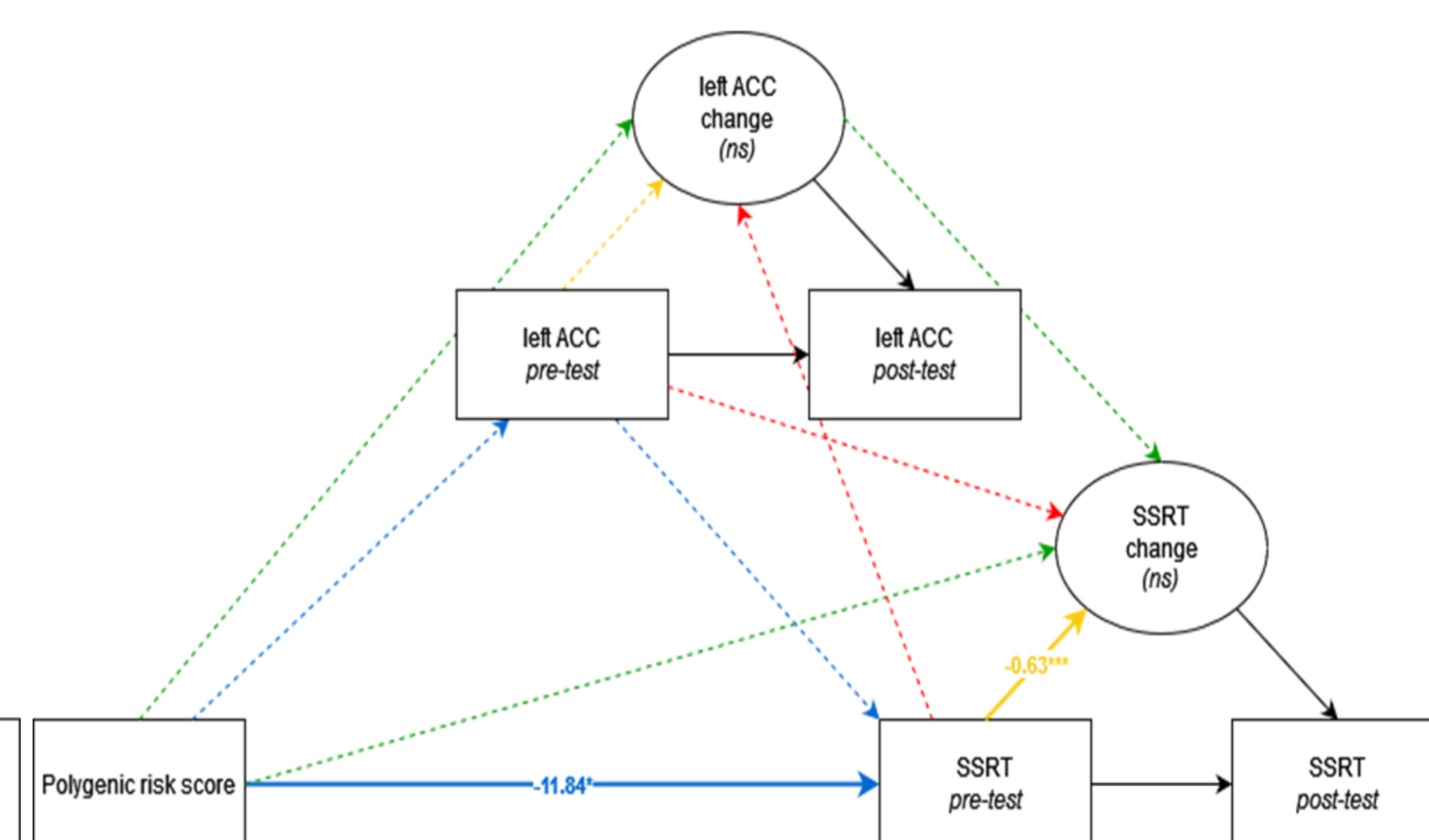


### Without spatial normalization (left ACC)

#### IC training

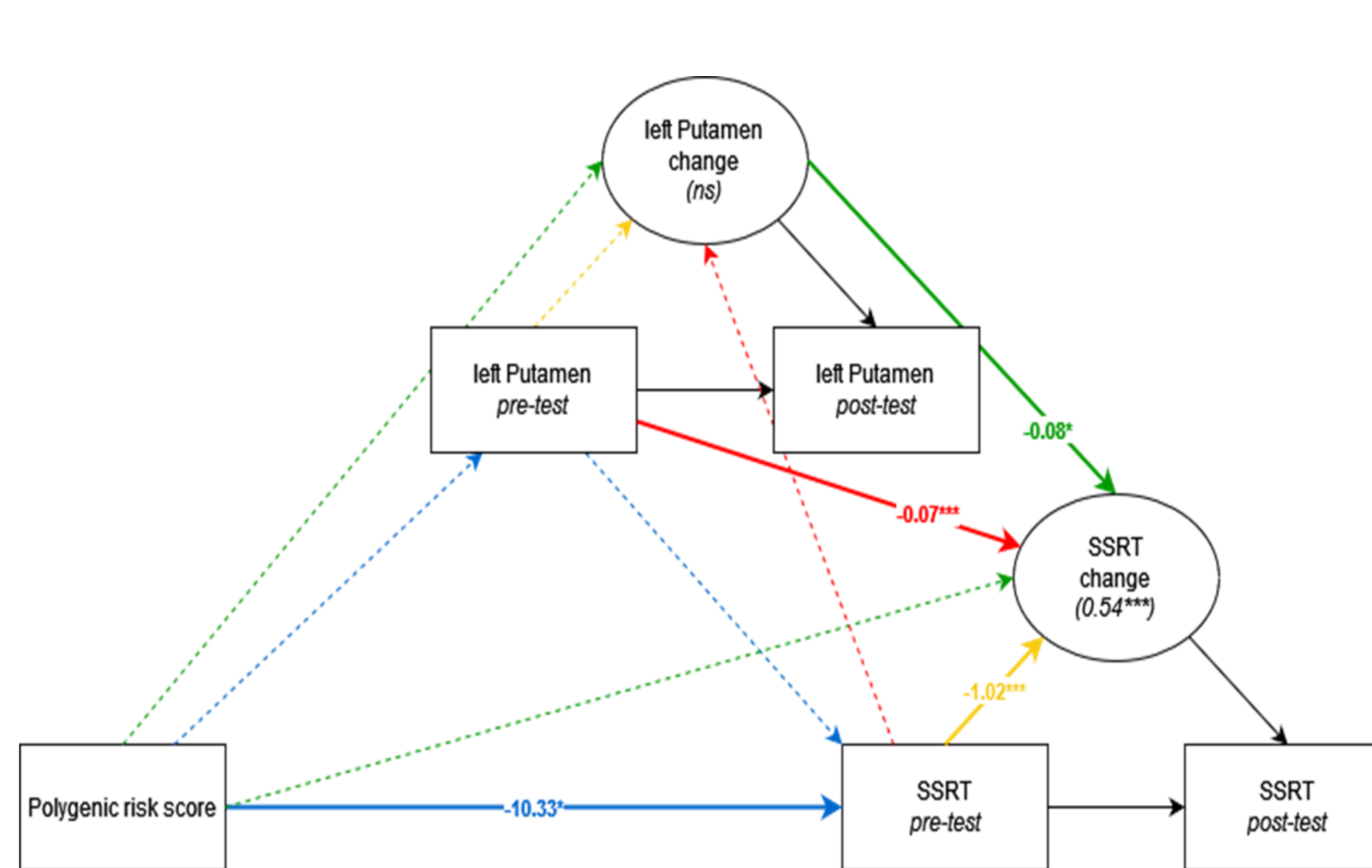


#### Control training



### With spatial normalization (left Putamen)

#### IC training



#### Control training

