



HAL
open science

Dusting off the old stones. Correlating old collections with new excavations: The case of "layer 2" of Coupe-Gorge (Montmaurin, France)

Cyrielle Mathias, Nicolas Boulbes, Thomas Garcia-Fermet, Jean-Luc Guadelli, Anne-Sophie Lartigot-Campin, Anne-Marie Moigne, Agnès Testu, Jose Utge-Buil, Amélie Vialet

► To cite this version:

Cyrielle Mathias, Nicolas Boulbes, Thomas Garcia-Fermet, Jean-Luc Guadelli, Anne-Sophie Lartigot-Campin, et al.. Dusting off the old stones. Correlating old collections with new excavations: The case of "layer 2" of Coupe-Gorge (Montmaurin, France). 3th Virtual Conference for Women Archaeologists an Paleontologists, Mar 2023, Online, France. . hal-04040888

HAL Id: hal-04040888

<https://hal.science/hal-04040888>

Submitted on 22 Mar 2023

HAL is a multi-disciplinary open access archive for the deposit and dissemination of scientific research documents, whether they are published or not. The documents may come from teaching and research institutions in France or abroad, or from public or private research centers.

L'archive ouverte pluridisciplinaire **HAL**, est destinée au dépôt et à la diffusion de documents scientifiques de niveau recherche, publiés ou non, émanant des établissements d'enseignement et de recherche français ou étrangers, des laboratoires publics ou privés.



Distributed under a Creative Commons Attribution - NoDerivatives 4.0 International License

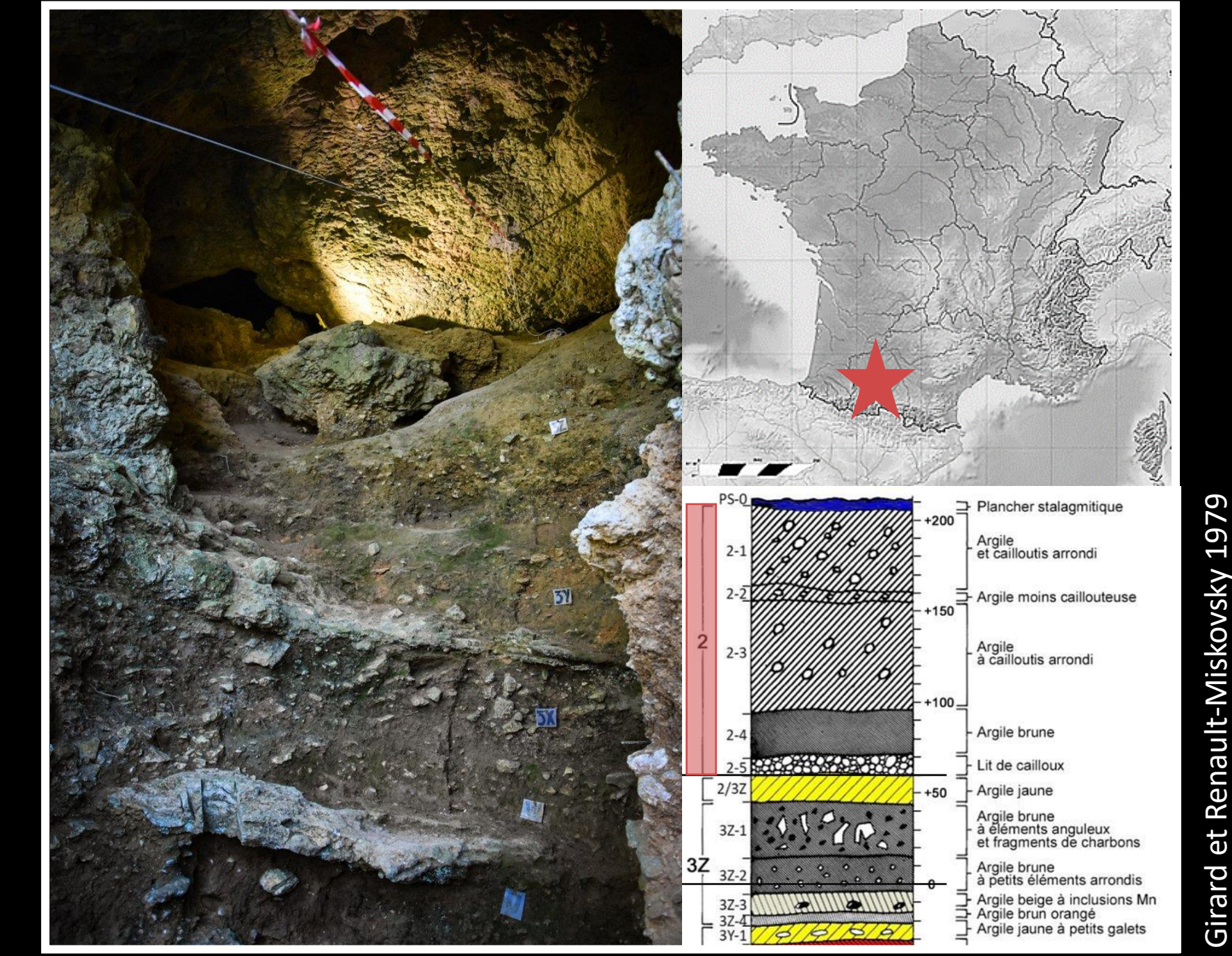
Dusting off the old stones.

CORRELATING OLD COLLECTIONS WITH NEW EXCAVATIONS: THE CASE OF 'LAYER 2' OF COUPE-GORGE (MONTMAURIN)

Mathias C., Boulbes N., Garcia-Fermet T., Guadelli J.-L., Lartigot-Campin A.-S., Moigne A.-M., Testu A., Utge J., Violet A.

Montmaurin karstic system (Haute-Garonne, France) was explored early in the XXth century in the frame of quarrying activities. Several sites were thus excavated (Middle Pleistocene >> Holocene). A new project (dir. A. Violet) is conducted since 2018 in order to date and understand the environmental and cultural context of occupations. New fieldworks are focused on the upper levels of **Coupe-Gorge** cave, especially **layers from Unit 2**, which were previously attributed by L. Méroc to Upper Paleolithic (Chatelperronian, Aurignacian at the basis & Magdalenian on the top) with possible perturbations.

Evidences of occupations dated to the end of Middle Paleolithic / onset of Upper Paleolithic are still rare in the Pyrenees. We present here the report of our analysis on the material from old and new excavations to better define the context and components of this stratigraphical unit.



Location of Coupe-Gorge cave and stratigraphy of the Upper Units.

FAUNAL REMAINS

	Old exc.	New exc.	Total
Bovinae ind.	62	27	89
<i>Bison priscus</i>	18	3	21
<i>Bos primigenius</i>	6	-	6
<i>Rupicapra pyrenaica</i>	8	2	10
<i>Capra pyrenaica</i>	7	4	11
Rangifer tarandus	165	74	239
<i>Capreolus capreolus</i>	6	8	14
<i>Cervus elaphus</i>	43	17	60
<i>Megaloceros giganteus</i>	3	-	3
<i>Sus scrofa</i>	1	1	2
Equus sp. (cf. gallicus)	49	34	83
<i>Equus hydruntinus</i>	4	5	9
<i>Coelodonta antiquitatis</i>	3	3	6
<i>Mammuthus primigenius</i>	2	1	3
<i>Mustela sp.</i>	1	11	12
<i>Meles meles</i>	1	-	1
<i>Felis silvestris</i>	-	1	1
<i>Panthera spelaea</i>	1	1	2
<i>Crocota crocuta</i>	6	7	13
<i>Ursus arctos</i>	-	6	6
Ursus spelaeus	49	112	161
<i>Vulpes lagopus</i>	-	1	1
Vulpes vulpes	61	125	186
<i>Cuon alpinus</i>	-	1	1
<i>Canis lupus</i>	15	18	33
Total	511	462	973



Rangifer tarandus



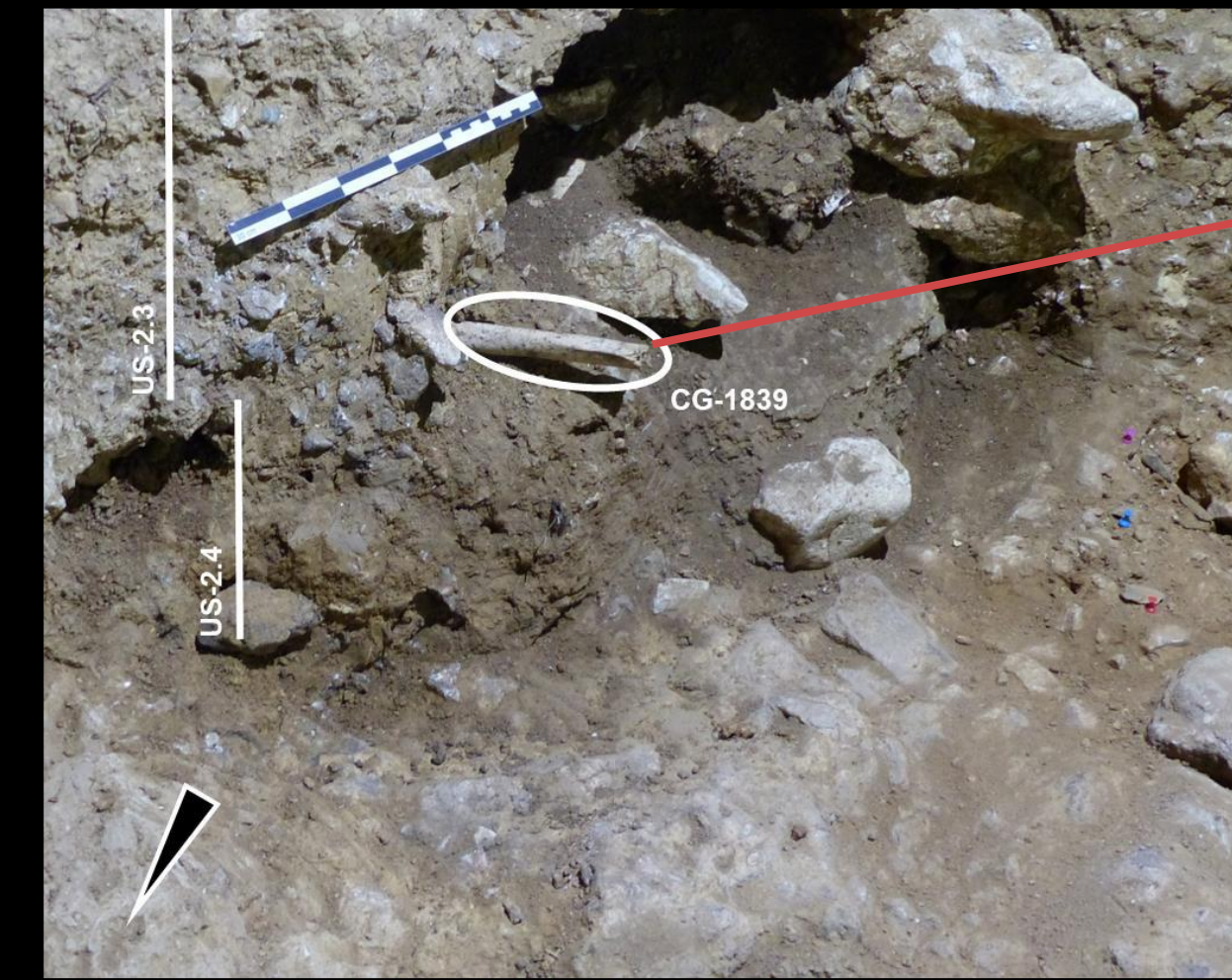
Equus cf. gallicus



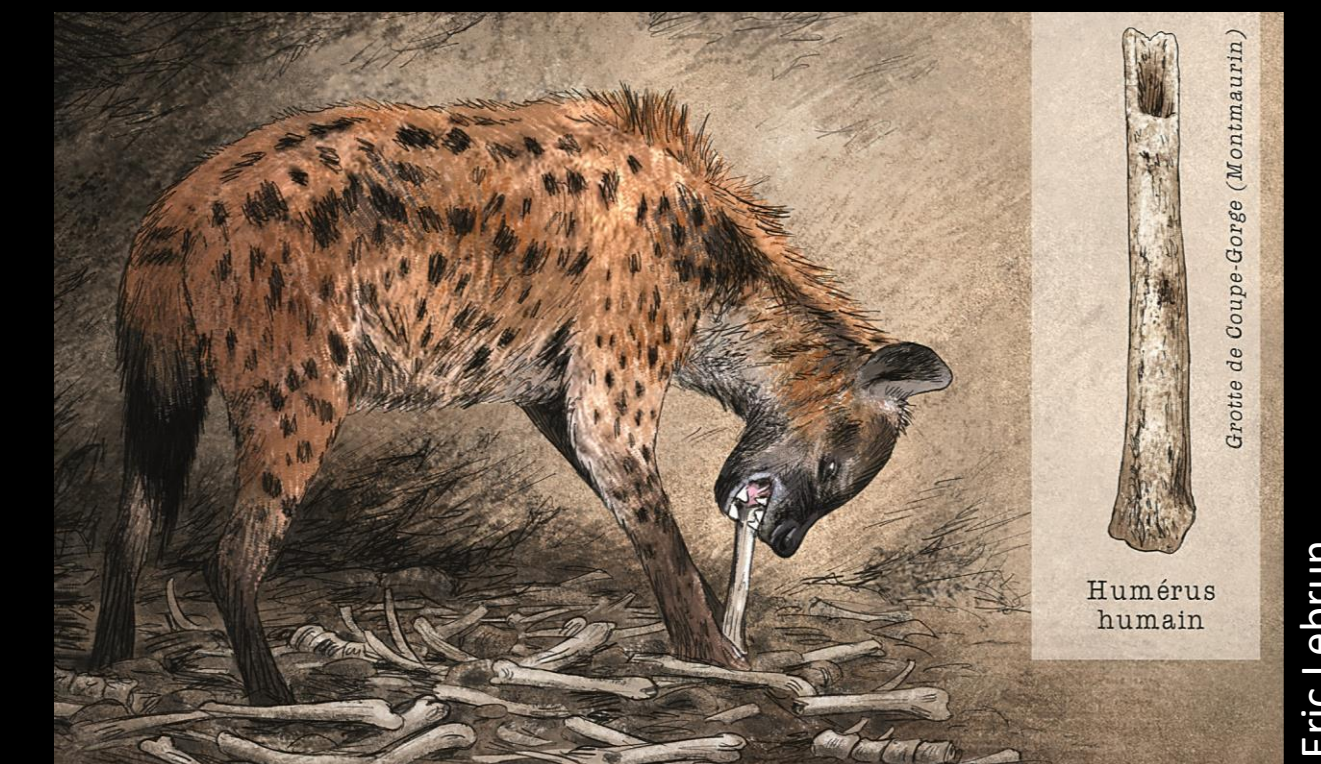
Vulpes vulpes

MIS 3/2

THE HUMAN HUMERUS (2022)



- ▶ Maybe an ancient *Homo sapiens* left humerus, but falls within the variation of Neanderthals and *Homo heidelbergensis*
- ▶ Carnivores traces (on fresh bone)



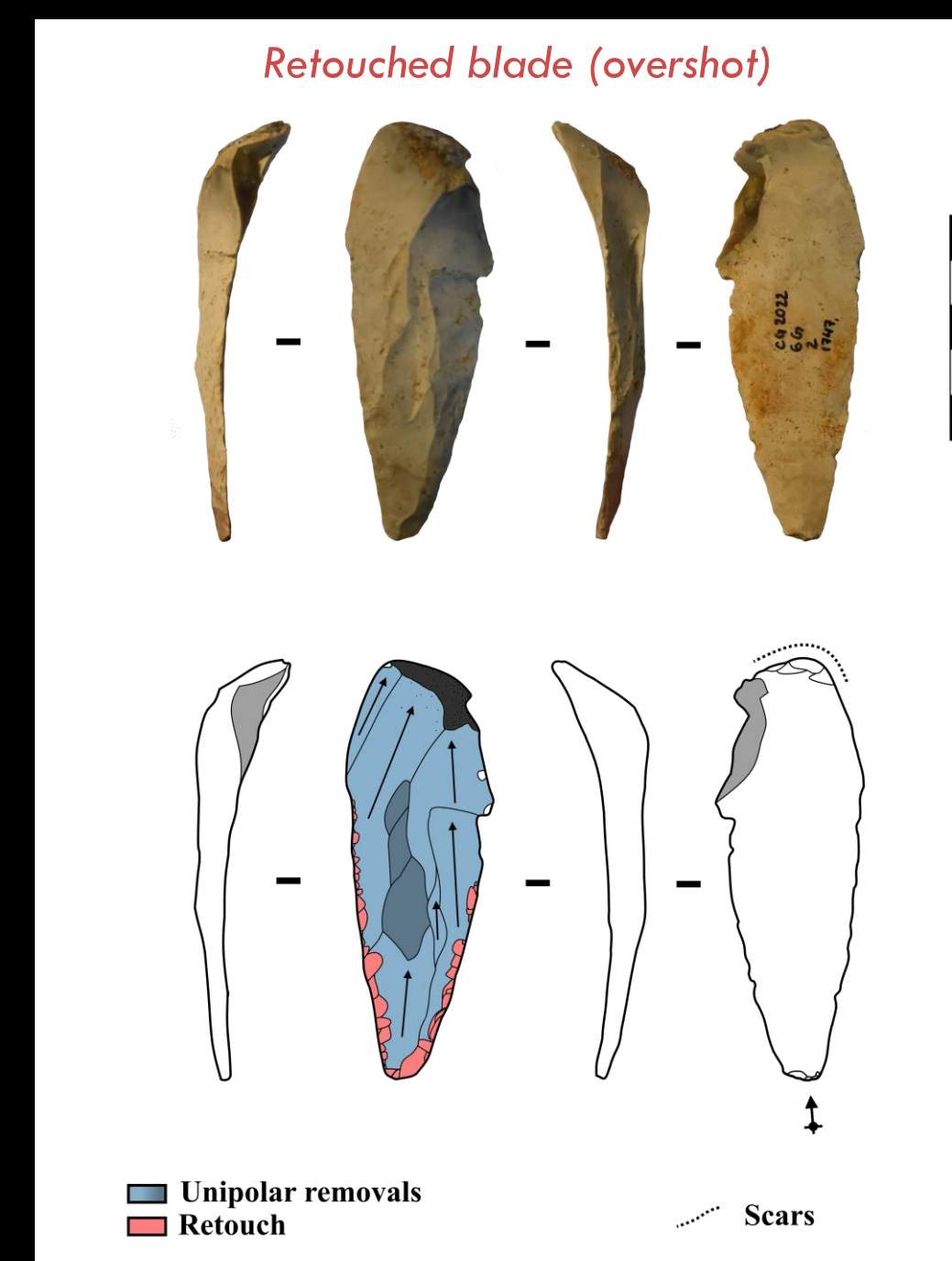
Eric Lebrun

LITHIC TECHNOLOGY

- ▶ Local raw materials: quartzites (Garonne alluviums) and Danian flints (Petites Pyrénées); some Lydian and Flysch flints (ca. 50 km West from the site)
- ▶ Fragmented chaînes opératoires: short term occupations
- ▶ Undiagnostic quartzite main production (S.S.D.A. etc.)
- ▶ Laminar and Discoid components on flint



Unifacial core
Bipolar removals



Retouched blade (overshot)

Cammas collections (MNP)	Quartzites	Flints	Volcan.	Limestone	Total
Flakes without cortex	9	6	-	-	15
Flakes with residual cortex	9	2	1	-	12
Semi-cortical & cortical flakes	5	1	-	1	7
Elongated flakes/blades	-	3	-	-	3
Retouch flakes	-	1	-	-	1
Total flakes	23	13	1	1	38
S.S.D.A. cores - 2, 3 surfaces	2	1	-	-	3
Unifacial cores	2	2	-	-	4
Kombewa cores	-	1	-	-	1
Cores « à pan » (elongated)	-	1	-	-	1
Bipolar on anvil cores	1	-	-	-	1
Total cores	5	5	-	-	10
Hammerstones & fragments (tools)	4	-	-	-	4
Total	32	18	1	1	52
%	61,5	34,6	1,9	1,9	100



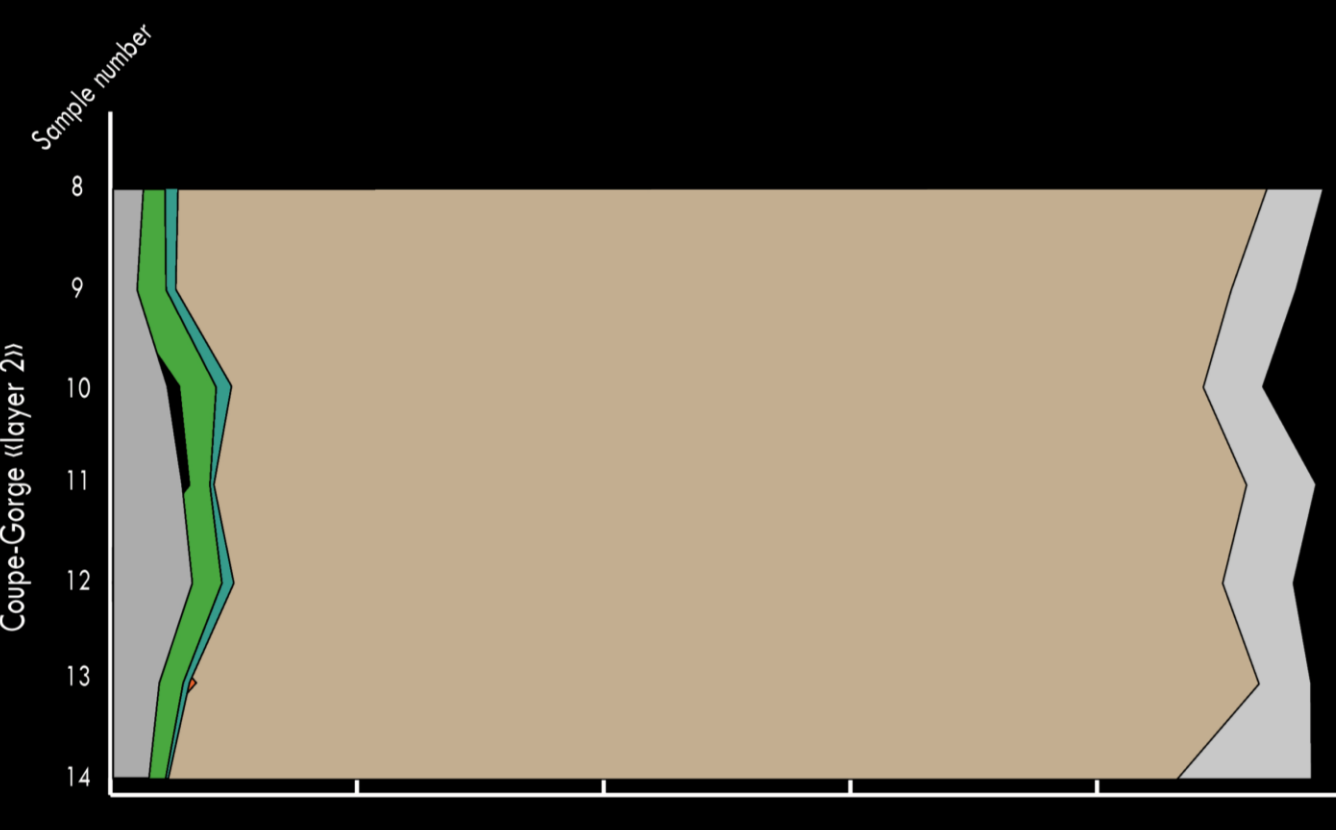
Regular flakes

New excavations	Quartzite	Flints	Lydian	Quartz	Total
Chunks	-	1	-	-	1
Flakes	12	7	2	-	21
Laminar flakes, blades	2	6	1	-	9
Retouch flakes	-	1	-	-	1
Raw pebbles/cobbles	-	-	-	1	1
Cores or shaped items	1	-	-	-	1
Hammerstones & fragments	2	-	-	-	2
(Retouched)	-	(2)	(1)	-	(2)
Total	17	15	1	1	36

Blade mesial fragment

Elongated products

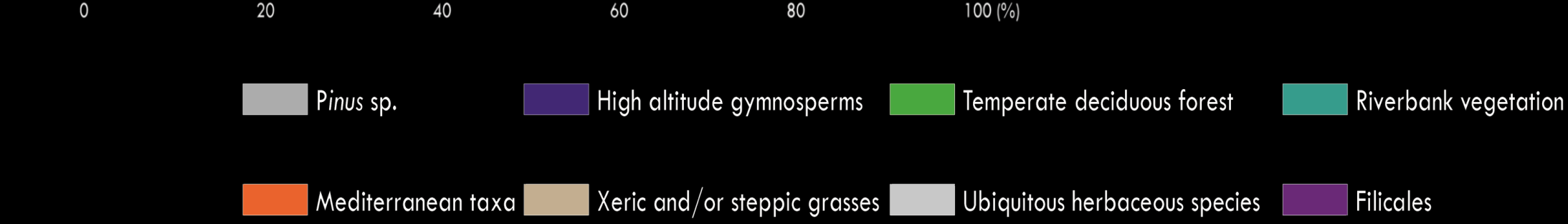
ENVIRONMENTAL DATA



Palynological analysis (Girard & Renault-Miskovsky, 1979):

Steppe grasslands/ Reduced tree & shrub strata / dense & diversified herbaceous stratum

- ▶ Cold & dry continental climate



Avifauna: *Coturnix coturnix* & Cf. *Bubo scandiacus* = cold climate with steppes (to be confirmed)

CONCLUSIONS

- ▶ Mixed occupations by both Humans and Carnivores in several layers
- ▶ Upper Pleistocene = MIS 3? (59-27 ka)
- ▶ Possible ancient *Homo sapiens* humerus (DNA preliminary results from coprolites* & sediment**)



- ▶ A possible combination/mix of Upper and Middle Paleolithic lithic components = palimpsest or short term occupations. Possible dispersion of older artefacts from the chimney (cf. Cammas & Gaillard hypothesis) – No long knapping sequences *in situ* so far
- ▶ Difficulty to assess lithic industries using both quartzites & flints from the UP
- ▶ Perspectives: radiocarbene dates on charcoals & directly on the human humerus with DNA sampling (taxonomic attribution); further climate considerations & spatial analysis

* Analysis performed at the technical platform "Paléogénomique et Génétique Moléculaire P2GM", MNHN, with the collaboration of C. Bon and P. Verdu. ** Analysis performed by M. Meyer, L. Jauregui and J. Richter.

References: Crégut-Bonnoure, E., Boulbes, N., Guérin, C., Pernaud, J., Tavoso, A., Cammas, R., 2010. Le contexte géomorphologique et faunique de l'homme de Montmaurin (Haute-Garonne). Préhistoires Méditerranéennes, 1, p.3-85. / Gaillard C. 1979. L'industrie lithique du Paléolithique inférieur et moyen de la grotte de Coupe-Gorge à Montmaurin (Haute-Garonne), thèse de doctorat de l'Université de Marseille, Laboratoire de Paléontologie humaine et de Préhistoire, 586 p. / Girard M., Renault-Miskovsky J. 1979. Analyse pollinique de la grotte de Coupe-Gorge à Montmaurin (Haute-Garonne), Bulletin de l'Association française pour l'Etude du Quaternaire, 4, p. 175-189.