



Emergence of multi-drug-resistant *Mycobacterium tuberculosis* in Niger: A snapshot based on whole-genome sequencing

Zelika Harouna Hamidou, Madjid Morsli, Saidou Mamadou, Michel Drancourt, Jamal Saad

► To cite this version:

Zelika Harouna Hamidou, Madjid Morsli, Saidou Mamadou, Michel Drancourt, Jamal Saad. Emergence of multi-drug-resistant *Mycobacterium tuberculosis* in Niger: A snapshot based on whole-genome sequencing. PLoS Neglected Tropical Diseases, 2022, 16 (5), pp.e0010443. 10.1371/journal.pntd.0010443 . hal-04039559

HAL Id: hal-04039559

<https://hal.science/hal-04039559>

Submitted on 30 May 2023

HAL is a multi-disciplinary open access archive for the deposit and dissemination of scientific research documents, whether they are published or not. The documents may come from teaching and research institutions in France or abroad, or from public or private research centers.

L'archive ouverte pluridisciplinaire **HAL**, est destinée au dépôt et à la diffusion de documents scientifiques de niveau recherche, publiés ou non, émanant des établissements d'enseignement et de recherche français ou étrangers, des laboratoires publics ou privés.



Distributed under a Creative Commons Attribution 4.0 International License

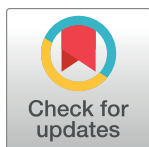
RESEARCH ARTICLE

Emergence of multi-drug-resistant *Mycobacterium tuberculosis* in Niger: A snapshot based on whole-genome sequencing

Zelika Harouna Hamidou^{1,2,3}, Madjid Morsli^{1,2}, Saidou Mamadou^{3,4}, Michel Drancourt^{1,2}, Jamal Saad^{1,2*}

1 Aix-Marseille-Univ, IRD, MEPHI, IHU Méditerranée Infection, Marseille, France, **2** IHU Méditerranée Infection, Marseille, France, **3** Laboratoire National de Référence des IST/VIH et de la Tuberculose, Niamey, Niger, **4** Université Abdou Moumouni, Niamey, Niger

* jsaad270@gmail.com



Abstract

Background

Among other West African countries experiencing the high endemicity of deadly tuberculosis, the situation in Niger is poorly evidenced by microbiological investigations.

Methodology/Principal findings

The study of 42 isolates of *Mycobacterium tuberculosis* from Niger by whole genome sequencing using Illumina iSeq technology yielded four *M. tuberculosis* lineages: Indo-Oceanic L1 (n = 1) (2.3%), East-Asian (n = 1) (2.3%), East-African Indian L3 (n = 2) (4.7%) and Euro-American L4 (n = 38) (90.4%). The sub-lineage L4.1.3 comprising 18 isolates (47.3%) was predominant, followed by the L4.6.2.2 sub-lineage (Cameroon genotype, n = 13 isolates) (34.2%). Investigating drug resistance profile for 12 antibiotics found 8/42 (19%) pan-susceptible isolates and 34/42 (81%) resistant isolates; with 40/42 (95.2%) isolates being susceptible to clofazimine-bedaquiline.

Conclusions/Significance

These unprecedented data from Niger highlight the dynamics of tuberculosis transmission and drug resistance in Niger and may assist tuberculosis control in this country which continues to support a high burden of tuberculosis.

Author summary

Tuberculosis is a major public health problem in Niger, in West Africa. Niger has an emerging problem with multidrug-resistant tuberculosis (MDR-TB). Whole genome sequencing was used to understand the epidemiology of tuberculosis and genetics of

OPEN ACCESS

Citation: Harouna Hamidou Z, Morsli M, Mamadou S, Drancourt M, Saad J (2022) Emergence of multi-drug-resistant *Mycobacterium tuberculosis* in Niger: A snapshot based on whole-genome sequencing. PLoS Negl Trop Dis 16(5): e0010443. <https://doi.org/10.1371/journal.pntd.0010443>

Editor: Subash Babu, NIH-National Institute for Research in Tuberculosis-ICER, INDIA

Received: July 26, 2021

Accepted: April 22, 2022

Published: May 25, 2022

Copyright: © 2022 Harouna Hamidou et al. This is an open access article distributed under the terms of the [Creative Commons Attribution License](https://creativecommons.org/licenses/by/4.0/), which permits unrestricted use, distribution, and reproduction in any medium, provided the original author and source are credited.

Data Availability Statement: All relevant data are within the manuscript and its [Supporting Information](#) files.

Funding: This work was supported by Agence Nationale de la Recherche (ANR-17-CE35-0006-01 PRIME, <http://www.agencenationale-recherche.fr/>) and by the French Government under the «Investissements d'Avenir» (Investments for the Future) program managed by the ANR (reference: Méditerranée Infection 10-IAHU-03). This work was also supported by Region Provence Alpes

Côte d'Azur and European funding FEDER IHUBIOTK by funding to ZHH. The funders had no role in study design, data collection and analysis, decision to publish, or preparation of the manuscript.

Competing interests: The authors have declared that no competing interests exist.

multi-drug resistance among patients from the regions in Niger. In this study, most isolates of *M. tuberculosis* from this dataset belonged to the L4.6.2.2 sub-lineage and L4.1.3 sub-lineage within the Euro-American lineage. Thirty-four out of 42 (81%) isolates were detected as resistant isolates. Our study highlights the need for epidemiological surveillance and more concerted efforts to ensure that patients are put through treatment.

Introduction

Niger is a country in West Africa with an estimated 23-million inhabitants. It is experiencing high endemicity of deadly tuberculosis, with 11,485 new and relapsing cases, including 87% of pulmonary forms, which were notified to the World Health Organization in 2019. In Niger, the incidence of multidrug-resistant (MDR)/rifampicin resistance (RR) was estimated at 2.6% (1.2–4.5) per 100,000 inhabitants [1] and in 2019, patients between 25–34 years old were the most affected age group, with a male predominance [1]. As in most limited resource countries, knowledge of the epidemiology of tuberculosis in Niger has been based solely on recording the number of cases as well as baseline demographic characteristics of patients.

The actual incidence of tuberculosis in the various regions of Niger, therefore, is poorly known; and the *Mycobacterium tuberculosis* (*M. tuberculosis*) complex (MTBC) species and lineages responsible for laboratory-documented cases, are also poorly known, limiting preventive public health work. The lineage of cases caused by *M. tuberculosis* demonstrates distinct geographical associations worldwide [2,3]. The genetic diversity of circulating strains of the *M. tuberculosis* complex may have implications for public health, as observed previously in several studies in West African countries [4,5].

Second generation high throughput sequencing technologies (such as the Illumina iSeq 100 System) mean it is now possible to perform whole genome sequencing (WGS) of *M. tuberculosis* [6]. Current genomic data showed that MTBC comprises nine human-adapted lineages (lineages 1–9) [4,7–10]. All MTBC lineages have been reported in Africa, suggesting that the MTBC emerged from a common ancestor, and expanded further following human migrations [11–15]. However, to our knowledge, no study has reported any MTBC-WGS of the *M. tuberculosis* complex in Niger.

Here, we investigated a collection of MTBC isolates by WGS to gain knowledge of the *M. tuberculosis* species, lineages and sub-lineages circulating in Niger, and tentatively correlated them to anonymised demographic data.

Materials and methods

Study collection

This retrospective study included all the positive cultures of mycobacteria routinely made for the diagnosis of pulmonary tuberculosis from respiratory tract specimens collected from patients suspected of having pulmonary tuberculosis, and from monitoring of multidrug resistance patients in Niger in 2016 and 2017. Respiratory tract specimens routinely addressed to the Laboratoire National de Référence des IST/VIH et de la Tuberculose, Niamey, Niger from five regions (Maradi, Niamey, Tahoua, Tillabéri and Zinder) were subjected to smear microscopic examination after auramine-O staining, decontamination using the modified Petroff method [16], and culture on Löwenstein-Jensen medium, prepared according to the manufacturer's instructions (Merck, Darmstadt, Germany) (Fig 1). Any colonies were verified by Ziehl-Neelsen staining, stored at -20° C and shipped to MEPHI, IHU Méditerranée Infection,

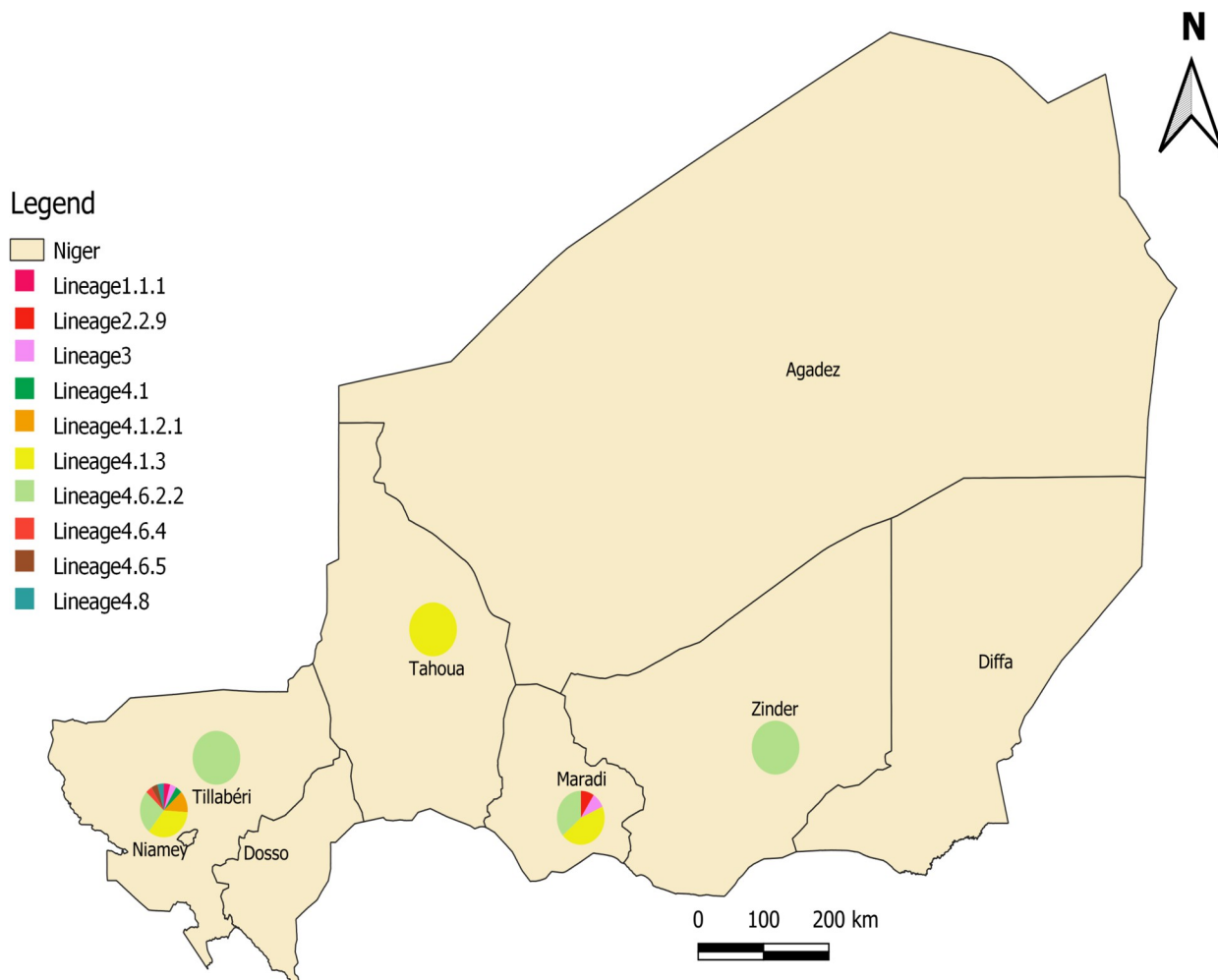


Fig 1. Geographical distribution of *M. tuberculosis* lineages/sub-lineages in Niger. Map created with DIVA-GIS (<https://www.diva-gis.org/gdata>) using GADM version 1.0 data (<https://gadm.org/data.html>).

<https://doi.org/10.1371/journal.pntd.0010443.g001>

Marseille, France for further investigation, as described below. Colonies which did not stain by Ziehl-Neelsen staining were not included in this study. No clinical samples were specifically collected for the present study, samples have been collected as part of the patients' routine medical management. We obtained permission from the head of the laboratory to carry out any investigation deemed useful on the strains of mycobacteria from our internal library.

Isolate culture and DNA sequencing

All the laboratory investigations involving non-inactivated isolates were performed in the bio-safety level 3 laboratory, at the IHU Méditerranée Infection, Marseille, France. Isolates were subcultured on Middlebrook 7H10 medium incorporating the OADC medium enrichment (oleic acid-albumin-dextrose-catalase) prepared according to the manufacturer's instructions (Becton Dickinson, Franklin Lakes, USA). Cultures were incubated in an aerobic atmosphere for up to 21 days at 37° C and visually inspected for colonies weekly. A loopful (equivalent to ten 2-microliter inoculation loops) of colony biomass was collected in a 1.5-mL tube containing 200 µL sterile phosphate buffered saline (PBS), and was heat-inactivated at 100°C for one hour [17]. Total DNA was extracted by vortexing the suspension with glass powder (Sigma-

Aldrich, St. Louis, MO, USA) using a FastPrep apparatus (MP Biomedicals, Santa Ana California, USA) followed by a Qiagen kit with EZ1 DNA Tissue Kit (Qiagen) according to the manufacturer's recommendations (Courtaboeuf, France) and eluted in 50- μ L volume [18]. The Illumina iSeq library was prepared as previously described [19]. Briefly, DNA (1 ng) was fragmented in a mix containing 5 μ L of Amplicon Tagment Mix in the presence of Tagment DNA Buffer (Nextera XT Library prep Kit, Illumina) for five minutes at 55°C, in an ABI 2720 GenAmp PCR System Thermal Cycler (Applied Biosystems, Foster City, CA, USA) in a 20 μ L volume. Then, 5 μ L of Neutralize Tagment Buffer was added before centrifugation for one minute at 2,800g and five minutes' incubation at room temperature, then indexed and amplified in a 50 μ L volume, followed by 18 cycles of PCR-index reaction, in the presence of Nextera XT Index Kit V2 (Nextera, San Diego, USA). A first purification was performed using Agencourt Ampure XP beads (Beckman Coulter, Villepinte, France) in a 0.8 ratio of beads followed by two washes with 80% alcohol and elution in 52.5 μ L of RSB buffer. The library concentration was measured in Agilent 2100 Bioanalyzer (Thermo Fisher Scientific), then diluted to 100 μ L RSB buffer in the presence of 10 μ L-volume of Phix (50 pM). Finally, the diluted libraries (50 pM) were denatured and sequenced on the iSeq 100 sequencer (Illumina) in a single 17.5-h run providing 2x150-bp long reads.

Study strains are available in the CSUR collection at IHU laboratory with specific CSUR number of each sample (S1 Table).

Genome typing and cluster identification

After reads were stored for the delay of analysis, kaiju with default parameters [20] was used to detect for contamination level using NCBI BLAST nr—non-redundant protein database including bacteria, archaea and viruses (2021-02-24 (52 GB). Overall qualities before and after trimming sequencing reads were evaluated using FastQC [21] and multiqc [22]. Then, Trimmomatic tool [23] was used to remove residual Illumina adapters and Illumina-specific sequences. Species, lineages and sub-lineages were identified directly based on output iSeq read using the Tb-profiler (TB_v0.1.3) (<https://tbdr.lshtm.ac.uk/>) and MTBseq [24] with default settings by specific mapping to reference *M. tuberculosis* H37Rv (NC_000962.3). MTBseq was used to recover the statistical mapping data of output sequencing reads using *M. tuberculosis* H37Rv (NC_000962.3) as the reference genome (S1 Table). In addition, a local SNPs database constituted as previously reported, was used to identify Beijing sub-lineages [12,25,26]. Genome sequences were assembled using SPAdes version 3.13.1 [27] and annotated using Prokka version 1.12 [28]. The Roary pangenome pipeline [29] was used to generate the core-genes alignment of 42 clinical strains to create the phylogenetic tree in order to represent study strains using following parameters: 80% minimum identity for blastp, and a gene detected in 99% of isolates to be recorded as a core gene. Phylogenetic trees based on core genome were generated using FastTree 2.1.10_1 software (<https://ngphylogeny.fr/tools/tool/271/form>) using GTR model and bootstrap option with 1000 replicates.

Detection of drug resistance

The Tb-profiler was used to recover *in silico* susceptibility-resistance profiles to isoniazid, rifampicin, ethambutol, pyrazinamide, ethionamide, fluoroquinolones, streptomycin, capreomycin, amikacin and kanamycin. Each detected mutation was confirmed by mapping the output sequencing reads to the reference *M. tuberculosis* H37Rv resistance genes. Resistance mutations of *atpC*, *atpE*, rv0678, rv1979c and rv2535c were susceptibility searched [30–36] by mapping the output sequencing reads against these genes to detect resistance to clofazimine

and bedaquiline (S2 Table). The impact of mutations on protein function was estimated using the PROVEAN score (http://provean.jcvi.org/seq_submit.php).

Results

M. tuberculosis genomic analysis

During the two-year study period (13 isolates in 2016 and 29 isolates in 2017 in Niger), a total of 42 *M. tuberculosis* isolates were investigated in this study. Of the 42 isolates (41 pulmonary TB, one pleural fluid), 25 were MDR cases, 15 were new cases and two were relapsing cases (Figs 1 and 2). Sequencing reads indicated that they belonged to four *M. tuberculosis* lineages: Indo-Oceanic L1 (n = 1) (2.3%), East-Asian (n = 1) (2.3%), East-African Indian L3 (n = 2)

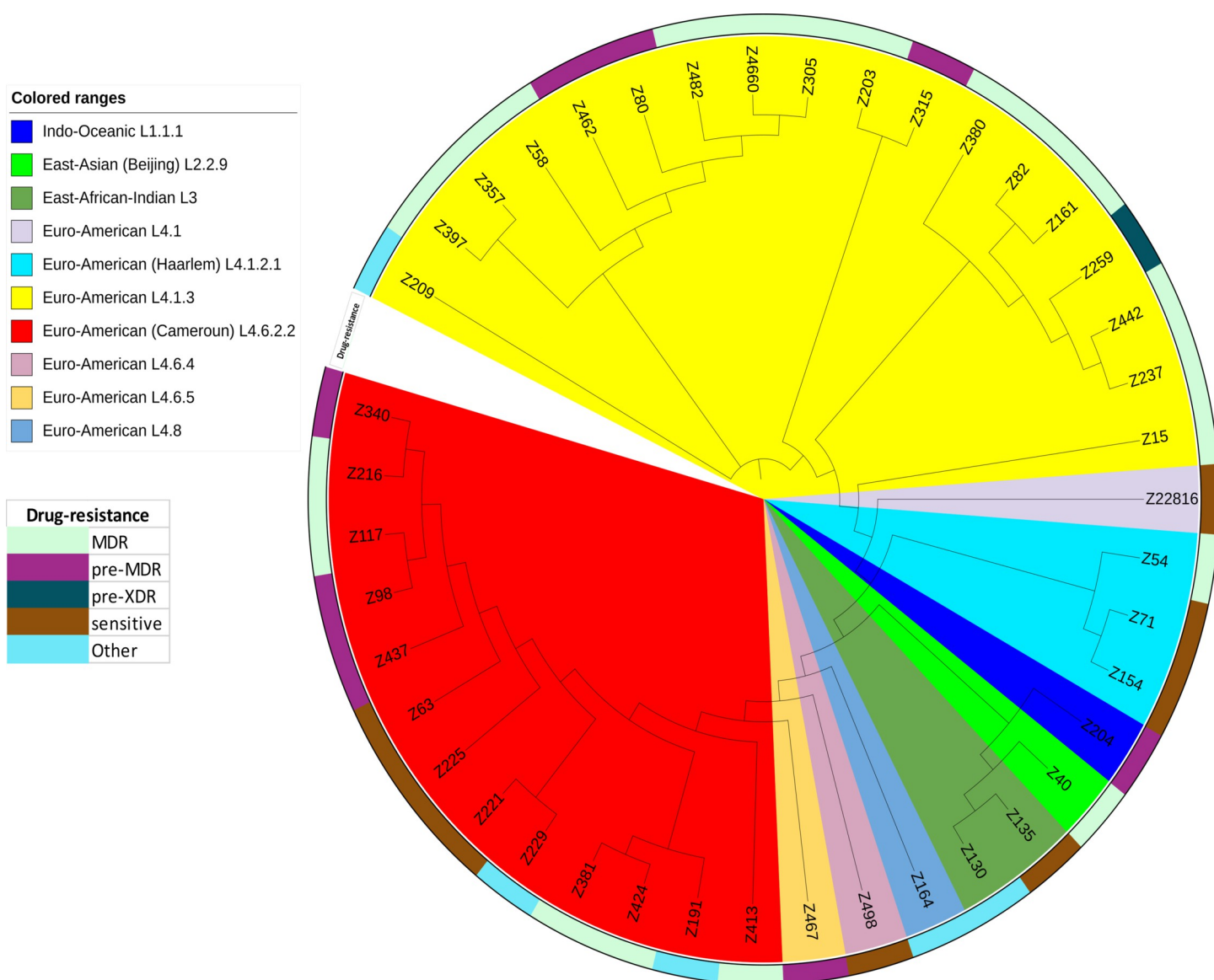


Fig 2. Core genome sequence-based phylogenetic tree displaying the sub-lineages of 42 *M. tuberculosis* isolates found in Niger. The colours of the isolates represent the resistance drugs of the sub-lineages. Phylogenetic trees based on the core genome were generated using FastTree 2.1.10_1 software (<https://ngphylomeny.fr/tools/tool/271/form>) using GTR model and bootstrap option with 1000 replicates. Tree was visualized using the iTOL online website.

<https://doi.org/10.1371/journal.pntd.0010443.g002>

(4.7%) and Euro-American L4 (n = 38) (90.4%) (S3 and S4 Tables); and 10 sub-lineages: The Indo-Oceanic lineage consisted of one sub-lineage L1.1.1 (n = 1) and the East Asian genotype L2 (Beijing) included one isolate in sub-lineage L2.2.9 (B0/W148) (2.3%). We detected two isolates belonging to the same East African Indian sub-lineage L3; while Euro-American L4 genomes were distributed in seven sub-lineages: the L4.1.3 sub-lineage comprised 18 isolates (47.3%), followed by the L4.6.2.2 (Cameroon) sub-lineage (n = 13 isolates) (34.2%) and the L4.1.2.1 sub-lineage (Haarlem) (n = 3 isolates) (7.8%). Finally, we identified one isolate in each of the following sub-lineages: L4.1 (2.6%), L4.6.4 (2.6%), L4.6.5 (2.6%) and L4.8 (2.6%) (Fig 2 and S3 and S4 Tables).

Antibiotic susceptibility profile

Antibiotic profiling found 8/42 (19%) *in silico* susceptible *M. tuberculosis* isolates and 34/42 (81%) *M. tuberculosis* isolates exhibiting at least one predicted antibiotic resistance (Fig 2 and S2 Table). The predicted resistant strains comprised one pre-XDR isolate belonging to sub-lineage L4.1.3, twenty MDR isolates (20/34; 58.8%) belonging to sub-lineages L4.1.2.1 (n = 1/3), L4.1.3 (n = 13/18), L4.6.2.2 (n = 5/13) and L2.2.9 (n = 1/1), eight pre-MDR isolates (8/34; 23.5%) belonging to sub-lineages L4.1.3 (n = 3/18), L4.6.2.2 (n = 3/13), L4.6.5 (n = 1/1) and L1.1.1 (n = 1/1) and five (5/34; 14.7%) unclassified isolates exhibiting resistance to one or three antibiotics belonging to L3 (n = 1/2), L4.1.3 (n = 1/18), L4.6.2.2 (n = 2/13), L4.6.4 (n = 1/1) and L4.8 (n = 1/1) (S2 Table).

In detail, the predominant *M. tuberculosis* sub-lineages L4.1.3 was divided into 13 MDR isolates (13/18; 72.2%), three pre-MDR isolates (3/18; 16.6%), one pre-XDR (1/18; 5.5%) and one other drug resistant type isolate. Moreover, the *M. tuberculosis* sub-lineage L4.6.2.2 was divided into five MDR isolates (n = 5/13; 38.4%), three pre-MDR isolates (n = 3/13; 23%) and two other drug resistant type isolates.

Regarding bedaquiline-clofazimine susceptibility profile, we detected no mutation in the *atpC*, *atpE* and *rv0678* genes. However, two L14R mutations (deleterious using PROVEAN with a score of -4.483) and D286G (neutral using PROVEAN with a score of -1.389) were detected in the *rv1979c* gene for *M. tuberculosis* Z204 (pre-MDR) belonging to sub-lineage L1.1.1. Other D283G mutations (deleterious using PROVEAN with a score of -2.935) were detected in the *rv2535c* gene for *M. tuberculosis* Z237 belonging to sub-lineage L4.1.3 (MDR). A specific amino acid insertion R473_V474insR (neutral using PROVEAN with a score of -0.092) was detected in the *rv1979c* gene, in common with *M. tuberculosis* sub-lineage L4.6.2.2 (S2 Table). These results showed that the *M. tuberculosis* sub-lineage L2.2.9 was detected as MDR.

Regarding ethionamide susceptibility profile, resistance mutation in *fabG1* gene (c.-8T>C) was detected in Z58 (MDR), Z467 (pre-MDR), Z437 (pre-MDR) belonging respectively to sub-lineage 4.1.3 Euro-American, sub-lineage 4.6.5 Euro-American and sub-lineage 4.6.2.2 Cameroon. Other mutation (p.Arg463Ser) and deletion (c.878_878del) were detected in the *ethA* gene for *M. tuberculosis* Z380 (MDR) and Z164 (other) respectively belonging to sub-lineage 4.1.3 Euro-American and sub-lineage 4.8 mainly T. (S3 Table)

Regarding fluoroquinolone susceptibility profile, *gyrB* gene resistance mutations were detected in *M. tuberculosis* Z259 (pre-XDR, sub-lineage 4.1.3 Euro-American) and Z191 (other, sub-lineage 4.6.2.2 Cameroon) and one *gyrA* mutation in *M. tuberculosis* Z229 (other, sub-lineage 4.6.2.2 Cameroon). Regarding capreomycin, two resistance mutations were detected in *tlyA* gene for *M. tuberculosis* Z467 (pre-MDR, sub-lineage 4.6.5 Euro-American) and *M. tuberculosis* Z204 (pre-MDR, sub-lineage 1.1.1 EAI). Finally, no resistance mutations detected for amikacin and kanamycin antibiotics.

Discussion and conclusion

This first ever WGS-based analysis of clinical *M. tuberculosis* isolates in Niger provided an overview of the population structure and genetic distribution of *M. tuberculosis* complex isolates from pulmonary and pleural fluid patients and a TB susceptibility profile in Niger.

We identified four human-adapted lineages: Indo-Oceanic L1, East-Asian L2, East-African Indian L3, and Euro-American L4, which was largely predominant, as previously reported in Niger [37,38] and the bordering West African countries [39,40] including Benin [10], Burkina Faso [41], Chad [42], Mali [4,43] and Nigeria [44,45].

This study offered an unprecedented yet preliminary opportunity to map the geographical distribution of the 42 *M. tuberculosis* isolates in Niger (Fig 1). Only *M. tuberculosis* sub-lineage L4.6.2.2 was observed in the regions of Zinder (two isolates) and Tillabéri (one isolate) and only *M. tuberculosis* sub-lineage L4.1.3 was observed in the region of Tahoua (five isolates) whereas we observed a greater distribution of the *M. tuberculosis* sub-lineage L2.2.9, L3, L4.1.3 and L4.6.2.2 in the regions of Maradi (11 isolates) and the *M. tuberculosis* sub-lineage L1.1.1, L3, L4.1, L4.1.2.1, L4.1.3, L4.6.4, L4.6.5, L4.8 and L4.6.2.2 in the regions of Niamey (23 isolates). Data study showed that the sub-lineages L4.1.3 and L4.6.2.2 were predominant in Niger and were observed in all the five regions (Niamey, Maradi, Tahoua, Tillabéri and Zinder) (Figs 1 and 2 and S3 Table). These two predominant *M. tuberculosis* sub-lineages L4.1.3 and L4.6.2.2 were present in Niger as dangerous sub-lineages with XDR isolate (5.5%), MDR (72.2%), pre-MDR (16.6%) of sub-lineages L4.1.3 and with MDR isolates (38.4%), and pre-MDR (23%) of sub-lineage L4.6.2.2. Using the available database of Tb-profiler (<https://tbdr.lshtm.ac.uk/sra>) and the available genomes results in West Africa [46–50], we observed 99/8,139 (1.2%) isolates belonging to sub-lineage L4.1.3 (25/8,139; 0.3%) and L4.6.2.2 (74/8,139; 0.9%) in sub-Saharan Africa.

Regarding *M. tuberculosis* L4.1.3, we observed 25 *M. tuberculosis* sub-lineage L4.1.3 isolates distributed in Côte d'Ivoire (21/47 isolates; 44.6%), Nigeria (1/56 isolate; 1.8%) and Republic of the Congo (3/139 isolates; 2.15%). These isolates were divided into 21/25 MDR isolates (84%), 1/25 Pre-XDR isolate (4%), 1/25 pre-MDR isolate (4%) and 2/25 sensitive isolates (8%). The L4.1.3 had previously been detected in the West African countries. These data suggest that the MDR-TB sub-lineage L4.1.3 strain is also emerging in Niger (S5 Table). Regarding *M. tuberculosis* sub-lineage L4.6.2.2, we observed 74 isolates distributed in Ghana (15/458 isolates; 3.3%), Liberia (3/51; 5.8%), Malawi (3/2324; 0.12%), Democratic Republic of the Congo (5/329; 1.5%), Nigeria (29/56; 51.7%) and Côte d'Ivoire (16/47; 34%). These isolates were divided into 16/74 MDR isolates (21.6%), 6/74 other resistance isolates (8.1%), and 49/74 sensitive isolates (66.2%) (S6 Table).

The Indo-Oceanic lineage consisted of one sub-lineage L1.1.1 ($n = 1$; one other drug-resistant type isolate), and East-African Indian L3 ($n = 2$; 2 sensitive isolates) in this study, and it has been reported in Niger the low prevalence of these lineages [37].

The East Asian genotype L2 (Beijing) includes one isolate of the *M. tuberculosis* sub-lineage L2.2.9 (B0/W148) (2.3%). To our knowledge this data has been reported for the first time in this study and suggests that the Beijing L2.2.9 strains are also commonly described as an emerging genotype in West African countries such as Niger. Moreover, recent round-trip migrations to and from China may also have played an important role in emerging and rising frequency of Beijing lineage strains in Niger.

Regarding second-line drugs, this study showed that there is no resistance to amikacin and kanamycin, which allows its use in treatment. In addition, 95.2% of isolates were susceptible to the antibiotics clofazimine and bedaquiline. These data support the repurposing of anti-leprosy antibiotics as antituberculosis treatments [51]. More, the specific amino acid insertion

detected was previously reported as specific insertion for sub-lineage L4.6.2.2 (Genotype Cameroon) [52]. Despite the small sample size, our study provides insight into the genomic diversity of lineages of *M. tuberculosis* and the drug-resistant epidemic in Niger. This study indicates the need to be aware of infection control procedures in healthcare establishments and within the population, and to carry out genomic epidemiological surveillance in Niger.

Supporting information

S1 Table. Mapping data of output sequencing reads using *M. tuberculosis* H37Rv (NC_000962.3) as the reference genome.
(XLSX)

S2 Table. Antibiotic susceptibility profile of the isolates and mapping approach against reference *Mycobacterium tuberculosis* H37Rv genes *in silico*.
(XLSX)

S3 Table. Lineages and sublineages identification of *Mycobacterium tuberculosis* isolates in Niger.
(XLSX)

S4 Table. Available sublineages data of *Mycobacterium tuberculosis* isolates in Niger (This study) and other Sub-Saharan Africa countries.
(XLSX)

S5 Table. Susceptibility profile of sublineage L4.1.3 isolates in Niger and other Sub-Saharan Africa countries.
(XLSX)

S6 Table. Susceptibility profile of sublineage L4.6.2.2 isolates in Niger and other Sub-Saharan Africa countries.
(XLSX)

Acknowledgments

The authors would like to thank the staff of the national reference laboratory for TB, the Programme National de Lutte contre la Tuberculose (PNLT) and the staff of the non-governmental organisation, Damien Foundation, in Niger.

Author Contributions

Conceptualization: Saidou Mamadou, Michel Drancourt, Jamal Saad.

Data curation: Zelika Harouna Hamidou, Madjid Morsli, Jamal Saad.

Formal analysis: Zelika Harouna Hamidou, Jamal Saad.

Funding acquisition: Zelika Harouna Hamidou, Madjid Morsli.

Methodology: Zelika Harouna Hamidou, Madjid Morsli, Michel Drancourt, Jamal Saad.

Project administration: Michel Drancourt, Jamal Saad.

Resources: Michel Drancourt, Jamal Saad.

Software: Jamal Saad.

Supervision: Saidou Mamadou, Michel Drancourt, Jamal Saad.

Validation: Michel Drancourt, Jamal Saad.

Visualization: Zelika Harouna Hamidou, Michel Drancourt, Jamal Saad.

Writing – original draft: Zelika Harouna Hamidou, Madjid Morsli, Saidou Mamadou, Michel Drancourt, Jamal Saad.

Writing – review & editing: Zelika Harouna Hamidou, Madjid Morsli, Saidou Mamadou, Michel Drancourt, Jamal Saad.

References

1. Global tuberculosis report 2020. [cited 21 May 2021]. Available: <https://www.who.int/publications-detail-redirect/9789240013131>
2. Coscolla M, Gagneux S. Consequences of genomic diversity in *Mycobacterium tuberculosis*. *Seminars in Immunology*. 2014; 26: 431–444. <https://doi.org/10.1016/j.smim.2014.09.012> PMID: 25453224
3. Hershberg R, Lipatov M, Small PM, Sheffer H, Niemann S, Homolka S, et al. High Functional Diversity in *Mycobacterium tuberculosis* Driven by Genetic Drift and Human Demography. Blaser MJ, editor. *PLoS Biol*. 2008; 6: e311. <https://doi.org/10.1371/journal.pbio.0060311> PMID: 19090620
4. Togo AG, Kodio O, Diarra B, Sanogo M, Coulibaly G, Bane S, et al. The most frequent *Mycobacterium tuberculosis* complex families in mali (2006–2016) based on spoligotyping. *Int J Mycobacteriol*. 2017; 6: 379. https://doi.org/10.4103/ijmy.ijmy_140_17 PMID: 29171452
5. Yeboah-Manu D, Asante-Poku A, Bodmer T, Stucki D, Koram K, Bonsu F, et al. Genotypic Diversity and Drug Susceptibility Patterns among *M. tuberculosis* Complex Isolates from South-Western Ghana. Supply P, editor. *PLoS ONE*. 2011; 6: e21906. <https://doi.org/10.1371/journal.pone.0021906> PMID: 21779354
6. Bruzek S, Vestal G, Lasher A, Lima A, Silbert S. Bacterial Whole Genome Sequencing on the Illumina iSeq 100 for Clinical and Public Health Laboratories. *The Journal of Molecular Diagnostics*. 2020; 22: 1419–1429. <https://doi.org/10.1016/j.jmoldx.2020.09.003> PMID: 32961318
7. Ngabonziza JCS, Loiseau C, Marceau M, Jouet A, Menardo F, Tzfadia O, et al. A sister lineage of the *Mycobacterium tuberculosis* complex discovered in the African Great Lakes region. *Nat Commun*. 2020; 11: 2917. <https://doi.org/10.1038/s41467-020-16626-6> PMID: 32518235
8. Coscolla M, Gagneux S, Menardo F, Loiseau C, Ruiz-Rodriguez P, Borrell S, et al. Phylogenomics of *Mycobacterium africanum* reveals a new lineage and a complex evolutionary history. *Microbial Genomics*. 2021; 7. <https://doi.org/10.1099/mgen.0.000477> PMID: 33555243
9. Yimer SA, Namouchi A, Zegeye ED, Holm-Hansen C, Norheim G, Abebe M, et al. Deciphering the recent phylogenetic expansion of the originally deeply rooted *Mycobacterium tuberculosis* lineage 7. *BMC Evol Biol*. 2016; 16: 146. <https://doi.org/10.1186/s12862-016-0715-z> PMID: 27363525
10. Affolabi D, Sanoussi N, Codo S, Sogbo F, Wachinou P, Massou F, et al. First Insight into a Nationwide Genotypic Diversity of *Mycobacterium tuberculosis* among Previously Treated Pulmonary Tuberculosis Cases in Benin, West Africa. *Canadian Journal of Infectious Diseases and Medical Microbiology*. 2017; 2017: 1–6. <https://doi.org/10.1155/2017/3276240> PMID: 28713434
11. Comas I, Coscolla M, Luo T, Borrell S, Holt KE, Kato-Maeda M, et al. Out-of-Africa migration and Neolithic coexpansion of *Mycobacterium tuberculosis* with modern humans. *Nat Genet*. 2013; 45: 1176–1182. <https://doi.org/10.1038/ng.2744> PMID: 23995134
12. Rutaiwa LK, Menardo F, Stucki D, Gygli SM, Ley SD, Malla B, et al. Multiple Introductions of *Mycobacterium tuberculosis* Lineage 2–Beijing Into Africa Over Centuries. *Front Ecol Evol*. 2019; 7: 112. <https://doi.org/10.3389/fevo.2019.00112>
13. O'Neill MB, Shockey A, Zarley A, Aylward W, Eldholm V, Kitchen A, et al. Lineage specific histories of *Mycobacterium tuberculosis* dispersal in Africa and Eurasia. *Mol Ecol*. 2019; 28: 3241–3256. <https://doi.org/10.1111/mec.15120> PMID: 31066139
14. Wirth T, Hildebrand F, Allix-Béguec C, Wölbeling F, Kubica T, Kremer K, et al. Origin, Spread and Demography of the *Mycobacterium tuberculosis* Complex. Achtman M, editor. *PLoS Pathog*. 2008; 4: e1000160. <https://doi.org/10.1371/journal.ppat.1000160> PMID: 18802459
15. Gagneux S, DeRiemer K, Van T, Kato-Maeda M, de Jong BC, Narayanan S, et al. Variable host-pathogen compatibility in *Mycobacterium tuberculosis*. *Proceedings of the National Academy of Sciences*. 2006; 103: 2869–2873. <https://doi.org/10.1073/pnas.0511240103> PMID: 16477032
16. Veen J, Raviglione M, Rieder HL, Migliori GB, Graf P, Grzemska M, et al. Standardized tuberculosis treatment outcome monitoring in Europe. *European Respiratory Journal*. 1998; 12: 505–510. <https://doi.org/10.1183/09031936.98.12020505> PMID: 9727811

17. Fellag M, Loukil A, Saad J, Lepidi H, Bouzid F, Brégeon F, et al. Translocation of *Mycobacterium tuberculosis* after experimental ingestion. Subbian S, editor. PLoS ONE. 2019; 14: e0227005. <https://doi.org/10.1371/journal.pone.0227005> PMID: 31887178
18. Angelakis E, Roux V, Raoult D, Rolain J-M. Real-time PCR strategy and detection of bacterial agents of lymphadenitis. Eur J Clin Microbiol Infect Dis. 2009; 28: 1363–1368. <https://doi.org/10.1007/s10096-009-0793-6> PMID: 19685089
19. Morsli M, Zandotti C, Morand A, Colson P, Drancourt M. Direct Diagnosis of Echovirus 12 Meningitis Using Metagenomic Next Generation Sequencing. Pathogens. 2021; 10: 610. <https://doi.org/10.3390/pathogens10050610> PMID: 34067526
20. Menzel P, Ng K, Krogh A. Fast and sensitive taxonomic classification for metagenomics with Kaiju. Nature Communications. 2016; 7: 11257. <https://doi.org/10.1038/ncomms11257> PMID: 27071849
21. Andrews S. FastQC: a quality control tool for high throughput sequence data. Babraham Bioinformatics, Babraham Institute, Cambridge, United Kingdom; 2010.
22. Ewels P, Magnusson M, Lundin S, Käller M. MultiQC: summarize analysis results for multiple tools and samples in a single report. Bioinformatics. 2016; 32: 3047–3048. <https://doi.org/10.1093/bioinformatics/btw354> PMID: 27312411
23. Bolger AM, Lohse M, Usadel B. Trimmomatic: a flexible trimmer for Illumina sequence data. Bioinformatics. 2014; 30: 2114–2120. <https://doi.org/10.1093/bioinformatics/btu170> PMID: 24695404
24. Kohl TA, Utpatel C, Schleusener V, De Filippo MR, Beckert P, Cirillo DM, et al. MTBseq: a comprehensive pipeline for whole genome sequence analysis of *Mycobacterium tuberculosis* complex isolates. PeerJ. 2018; 6: e5895. <https://doi.org/10.7717/peerj.5895> PMID: 30479891
25. Shitikov E, Kolchenko S, Mokrousov I, Bespyatykh J, Ischenko D, Ilina E, et al. Evolutionary pathway analysis and unified classification of East Asian lineage of *Mycobacterium tuberculosis*. Sci Rep. 2017; 7: 9227. <https://doi.org/10.1038/s41598-017-10018-5> PMID: 28835627
26. Ajawatanawong P, Yanai H, Smittipat N, Disratthakrit A, Yamada N, Miyahara R, et al. A novel Ancestral Beijing sublineage of *Mycobacterium tuberculosis* suggests the transition site to Modern Beijing sublineages. Sci Rep. 2019; 9: 13718. <https://doi.org/10.1038/s41598-019-50078-3> PMID: 31548561
27. Bankevich A, Nurk S, Antipov D, Gurevich AA, Dvorkin M, Kulikov AS, et al. SPAdes: A New Genome Assembly Algorithm and Its Applications to Single-Cell Sequencing. Journal of Computational Biology. 2012; 19: 455–477. <https://doi.org/10.1089/cmb.2012.0021> PMID: 22506599
28. Seemann T. Prokka: rapid prokaryotic genome annotation. Bioinformatics. 2014; 30: 2068–2069. <https://doi.org/10.1093/bioinformatics/btu153> PMID: 24642063
29. Page AJ, Cummins CA, Hunt M, Wong VK, Reuter S, Holden MTG, et al. Roary: rapid large-scale prokaryote pan genome analysis. Bioinformatics. 2015; 31: 3691–3693. <https://doi.org/10.1093/bioinformatics/btv421> PMID: 26198102
30. Mokrousov I, Akhmedova G, Polev D, Molchanov V, Vyazovaya A. Acquisition of bedaquiline resistance by extensively drug-resistant *Mycobacterium tuberculosis* strain of Central Asian Outbreak clade. Clinical Microbiology and Infection. 2019; 25: 1295–1297. <https://doi.org/10.1016/j.cmi.2019.06.014> PMID: 31229592
31. Almeida D, Ioerger T, Tyagi S, Li S-Y, Mdluli K, Andries K, et al. Mutations in *pepQ* Confer Low-Level Resistance to Bedaquiline and Clofazimine in *Mycobacterium tuberculosis*. Antimicrob Agents Chemother. 2016; 60: 4590–4599. <https://doi.org/10.1128/AAC.00753-16> PMID: 27185800
32. Hartkoorn RC, Uplekar S, Cole ST. Cross-Resistance between Clofazimine and Bedaquiline through Upregulation of MmpL5 in *Mycobacterium tuberculosis*. Antimicrobial Agents and Chemotherapy. 2014; 58: 2979–2981. <https://doi.org/10.1128/AAC.00037-14> PMID: 24590481
33. Yew WW, Liang D, Chan DP, Shi W, Zhang Y. Molecular mechanisms of clofazimine resistance in *Mycobacterium tuberculosis*. Journal of Antimicrobial Chemotherapy. 2017; 72: 2943–2944. <https://doi.org/10.1093/jac/dkx227> PMID: 29091204
34. Zimenkov DV, Nosova EYu, Kulagina EV, Antonova OV, Arslanbaeva LR, Isakova AI, et al. Examination of bedaquiline- and linezolid-resistant *Mycobacterium tuberculosis* isolates from the Moscow region. Journal of Antimicrobial Chemotherapy. 2017; 72: 1901–1906. <https://doi.org/10.1093/jac/dkx094> PMID: 28387862
35. Ismail N, Ismail NA, Omar SV, Peters RPH. *In Vitro* Study of Stepwise Acquisition of *rv0678* and *atpE* Mutations Conferring Bedaquiline Resistance. Antimicrob Agents Chemother. 2019; 63: e00292–19, /aac/63/8/AAC.00292-19.atom. <https://doi.org/10.1128/AAC.00292-19> PMID: 31138569
36. Ghodousi A, Rizvi AH, Baloch AQ, Ghafoor A, Khanzada FM, Qadir M, et al. Acquisition of Cross-Resistance to Bedaquiline and Clofazimine following Treatment for Tuberculosis in Pakistan. Antimicrobial Agents and Chemotherapy. 2019; 63: 5. <https://doi.org/10.1128/AAC.00915-19> PMID: 31262765

37. Ejo M, Hassane-Harouna S, Souleymane MB, Lempens P, Dockx J, Uwizeye C, et al. Multidrug-resistant patients receiving treatment in Niger who are infected with *M. tuberculosis* Cameroon family convert faster in smear and culture than those with *M. tuberculosis* Ghana family. *Tuberculosis*. 2020; 122: 101922. <https://doi.org/10.1016/j.tube.2020.101922> PMID: 32275231
38. Gehre F, Ejo M, Fissette K, de Rijk P, Uwizeye C, Nduwamahoro E, et al. Shifts in Mycobacterial Populations and Emerging Drug-Resistance in West and Central Africa. Caramelli D, editor. *PLoS ONE*. 2014; 9: e110393. <https://doi.org/10.1371/journal.pone.0110393> PMID: 25493429
39. Gehre F, Kumar S, Kendall L, Ejo M, Secka O, Ofori-Anyinam B, et al. A Mycobacterial Perspective on Tuberculosis in West Africa: Significant Geographical Variation of *M. africanum* and Other *M. tuberculosis* Complex Lineages. Burke M, editor. *PLoS Negl Trop Dis*. 2016; 10: e0004408. <https://doi.org/10.1371/journal.pntd.0004408> PMID: 26964059
40. Ejo M, Gehre F, Barry MD, Sow O, Bah NM, Camara M, et al. First insights into circulating *Mycobacterium tuberculosis* complex lineages and drug resistance in Guinea. *Infection, Genetics and Evolution*. 2015; 33: 314–319. <https://doi.org/10.1016/j.meegid.2015.05.022> PMID: 26004194
41. Godreuil S, Torrea G, Terru D, Chevenet F, Diagbouga S, Supply P, et al. First Molecular Epidemiology Study of *Mycobacterium tuberculosis* in Burkina Faso. *Journal of Clinical Microbiology*. 2007; 45: 921–927. <https://doi.org/10.1128/JCM.01918-06> PMID: 17251410
42. Diguimbaye C, Hilty M, Ngandolo R, Mahamat HH, Pfyffer GE, Baggi F, et al. Molecular Characterization and Drug Resistance Testing of *Mycobacterium tuberculosis* Isolates from Chad. *Journal of Clinical Microbiology*. 2006; 44: 1575–1577. <https://doi.org/10.1128/JCM.44.4.1575-1577.2006> PMID: 16597898
43. Traore B, Diarra B, Dembele BPP, Somboro AM, Hammond AS, Siddiqui S, et al. Molecular strain typing of *Mycobacterium tuberculosis* complex in Bamako, Mali.: 7. <https://doi.org/10.5588/ijtld.11.0397> PMID: 22508197
44. Lawson L, Zhang J, Gomgnimbou MK, Abdurrahman ST, Le Moullec S, Mohamed F, et al. A Molecular Epidemiological and Genetic Diversity Study of Tuberculosis in Ibadan, Nnewi and Abuja, Nigeria. Mokrousov I, editor. *PLoS ONE*. 2012; 7: e38409. <https://doi.org/10.1371/journal.pone.0038409> PMID: 22723859
45. Thumamo BP, Asuquo AE, Abia-Bassey LN, Lawson L, Hill V, Zozio T, et al. Molecular epidemiology and genetic diversity of *Mycobacterium tuberculosis* complex in the Cross River State, Nigeria. *Infection, Genetics and Evolution*. 2012; 12: 671–677. <https://doi.org/10.1016/j.meegid.2011.08.011> PMID: 21878397
46. Otchere ID, Coscollá M, Sánchez-Busó L, Asante-Poku A, Brites D, Loiseau C, et al. Comparative genomics of *Mycobacterium africanum* Lineage 5 and Lineage 6 from Ghana suggests distinct ecological niches. *Sci Rep*. 2018; 8: 11269. <https://doi.org/10.1038/s41598-018-29620-2> PMID: 30050166
47. López MG, Dogba JB, Torres-Puente M, Goig GA, Moreno-Molina M, Villamayor LM, et al. Tuberculosis in Liberia: high multidrug-resistance burden, transmission and diversity modelled by multiple importation events. *Microbial Genomics*. 2020;6. <https://doi.org/10.1099/mgen.0.000325> PMID: 31935183
48. Glynn JR, Guerra-Assunção JA, Houben RMGJ, Sichali L, Mzembe T, Mwaungulu LK, et al. Whole Genome Sequencing Shows a Low Proportion of Tuberculosis Disease Is Attributable to Known Close Contacts in Rural Malawi. Cardona P-J, editor. *PLoS ONE*. 2015; 10: e0132840. <https://doi.org/10.1371/journal.pone.0132840> PMID: 26181760
49. Sobkowiak B, Glynn JR, Houben RMGJ, Mallard K, Phelan JE, Guerra-Assunção JA, et al. Identifying mixed *Mycobacterium tuberculosis* infections from whole genome sequence data. *BMC Genomics*. 2018; 19: 613. <https://doi.org/10.1186/s12864-018-4988-z> PMID: 30107785
50. Senghore M, Otu J, Witney A, Gehre F, Doughty EL, Kay GL, et al. Whole-genome sequencing illuminates the evolution and spread of multidrug-resistant tuberculosis in Southwest Nigeria. Mokrousov I, editor. *PLoS ONE*. 2017; 12: e0184510. <https://doi.org/10.1371/journal.pone.0184510> PMID: 28926571
51. Brouqui P, Aubry C, Million M, Drancourt M, Raoult D. Totally resistant tuberculosis: will antileprosy drugs be helpful? *International Journal of Antimicrobial Agents*. 2013; 42: 584–585. <https://doi.org/10.1016/j.ijantimicag.2013.08.004> PMID: 24091129
52. Saad J, Gallou J, Brieu N, Drancourt M, Baron SA. *Mycobacterium tuberculosis* whole genome sequence data support repurposing antileprosy antibiotic as antituberculosis. *Infectious Diseases (except HIV/AIDS)*; 2020 Aug. <https://doi.org/10.1101/2020.08.15.20175570>