



HAL
open science

N cycling in food/excretion systems: potential of human excretions used as fertilizers

Thomas Starck, Fabien Esculier

► **To cite this version:**

Thomas Starck, Fabien Esculier. N cycling in food/excretion systems: potential of human excretions used as fertilizers. XXI International Nitrogen Workshop: halving nitrogen waste by 2030, Oct 2022, Madrid, Spain. hal-04032296

HAL Id: hal-04032296

<https://hal.science/hal-04032296v1>

Submitted on 16 Mar 2023

HAL is a multi-disciplinary open access archive for the deposit and dissemination of scientific research documents, whether they are published or not. The documents may come from teaching and research institutions in France or abroad, or from public or private research centers.

L'archive ouverte pluridisciplinaire **HAL**, est destinée au dépôt et à la diffusion de documents scientifiques de niveau recherche, publiés ou non, émanant des établissements d'enseignement et de recherche français ou étrangers, des laboratoires publics ou privés.



Thomas Starck*, Fabien Esculier*
*Ecole Nationale des Ponts et Chaussées
thomas.starck@polytechnique.org



Context: Current food/excretion systems are unsustainable⁴. Recycling human excreta as fertilizers could improve circularity and reduce pollutions.

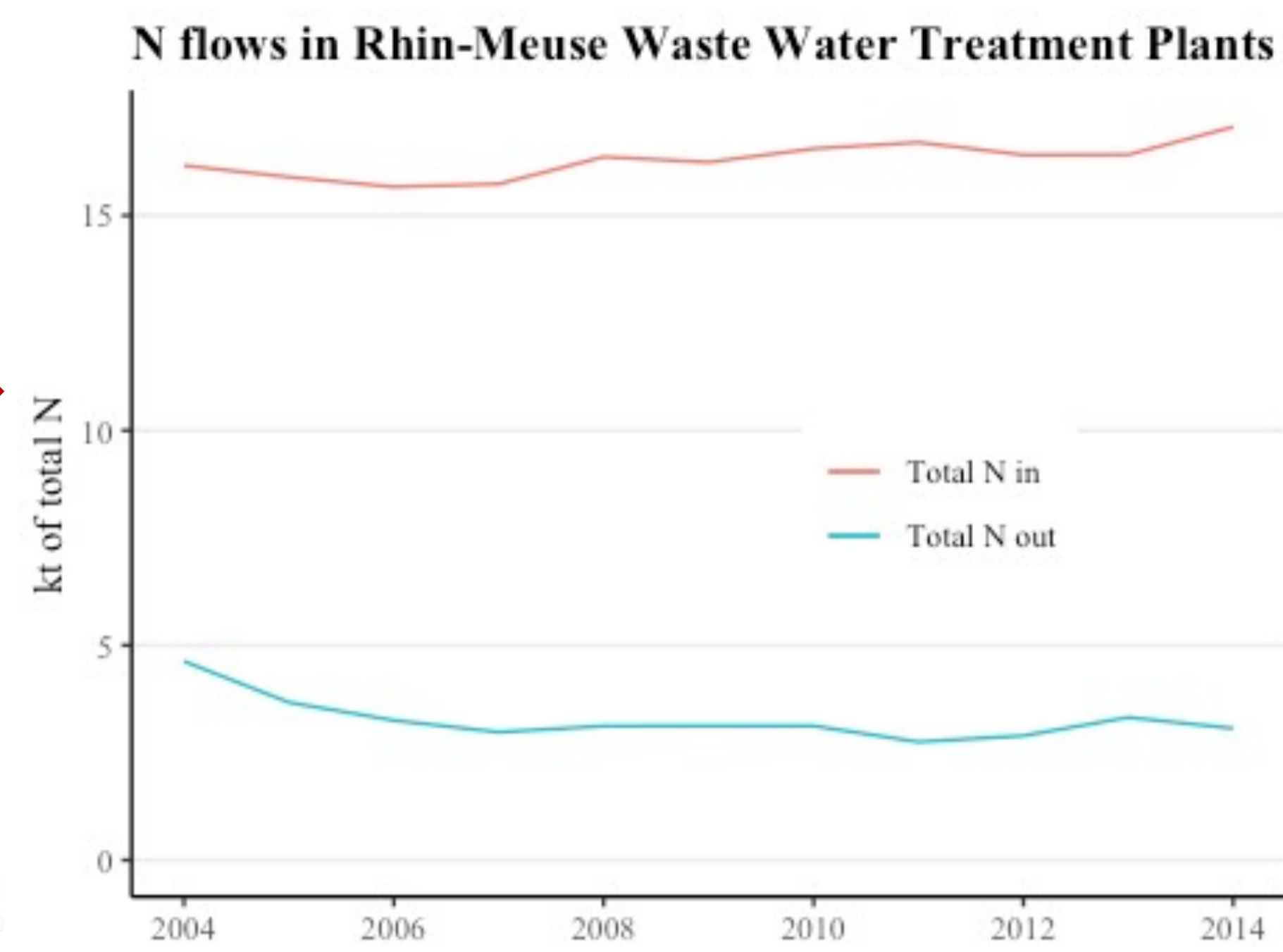
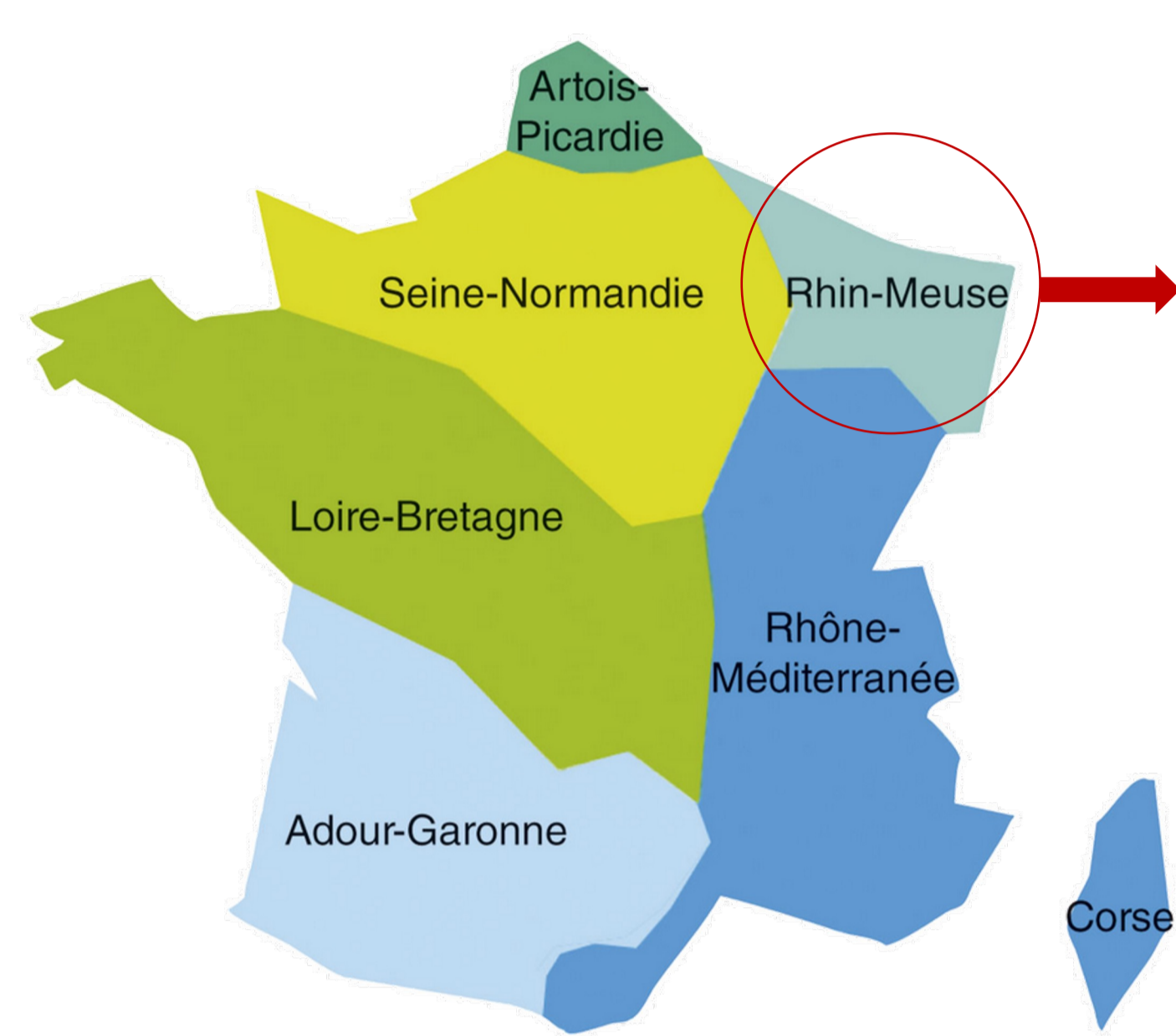
Objectives: Perform a global evaluation of N flows in the current French excretion system and assess the potential of human excreta used as fertilizers.

Step 1 : Assessment of N flows in French Wastewater Treatment Plants

We are currently producing a **unique dataset of the more than 20 000 wastewater treatment plants** in France. These data are decentralized for the 6 different French Water Agencies. We gather, clean, and harmonize these different datasets.

The final dataset will provide useful information beyond our scope of study: type of treatment, BDO5 flows, nominal capacity, sludge production... As an example, we focus here on N flows in the Rhin-Meuse basin.

The 6 French Water Agencies



N yield of Rhin-Meuse WWTP in 2014

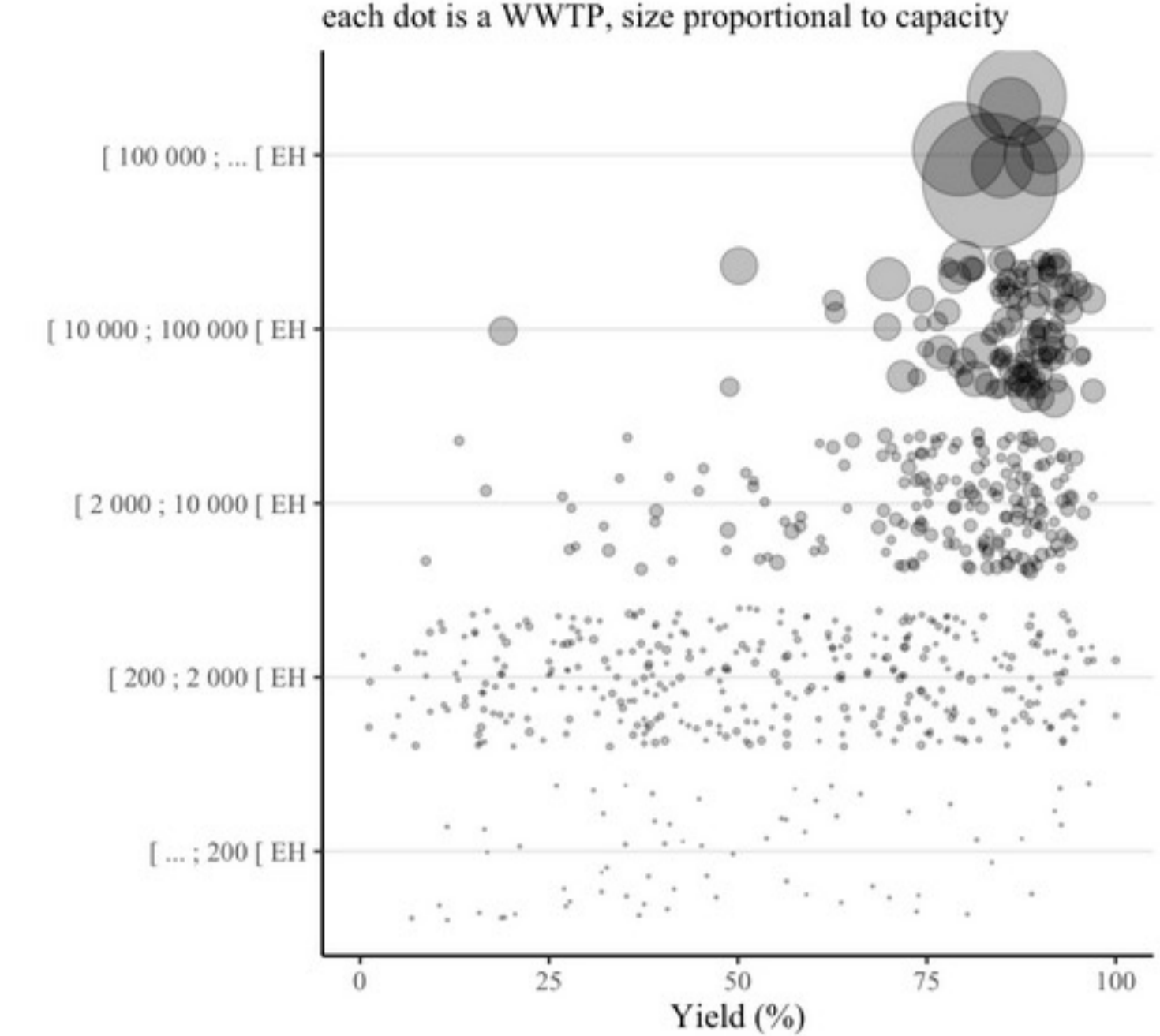


Figure 1. Example of information extracted from the dataset. **Left** : total N in and out of Rhin-Meuse wastewater treatment plants. **Right** : N yields of Rhin-Meuse individual wastewater treatment plants, sorted by reglementary capacities. We can see the effect of the European directive for N-sensitive zones. Beyond a capacity of 2 000 Population Equivalent, a minimum N yield of 70% (or a certain outflow N concentration) is mandatory.

Step 2 : Assessment of the whole French excretion system

Current estimations of N flows after excretion are already available, based on rough estimations of average wastewater treatment plant yields¹. Our dataset would allow to **use more precise operational data to perform a global N flow diagram** of the current French excretion system. To produce this result, we combine our data with information about food intakes, sewer connections, individual autonomous system yields, and sludge destination.

These are **preliminary results**. About **1/3 of the N** present in French excretions ends up in the **aquatic environment**, potentially contributing to eutrophication. **50% returns to the atmosphere as N₂** after denitrification. This unreactive N is not polluting, however from the N cycle perspective this is a net loss and reduces circularity. Moreover, denitrification is associated with substantial energy consumption and N₂O emissions, which could be avoided if N was recycled. Currently, **only 5-10% of the N is recycled in the farming system**.

This is an assessment at the French territory scale, but our dataset would allow to perform flow analyses at finer scales.

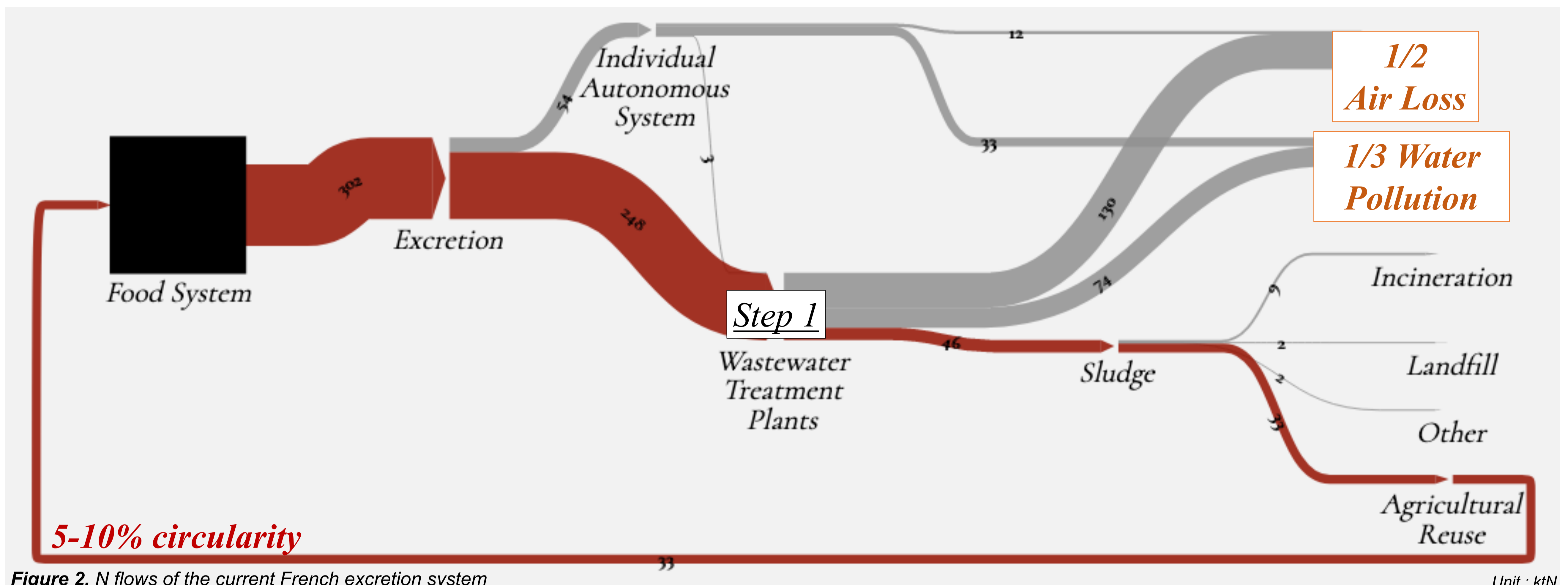


Figure 2. N flows of the current French excretion system

Unit : ktN

Step 3 : Human excreta recycling as potential fertilizers in France

The final aim would be to use our data to **estimate the potential of human excreta recycled as fertilizers** in agroecological scenarios. Most of the N is excreted in **urine** and could be **collected through urine-diversion toilets**³. Depending on the local context, a large variety of source-separation systems could be used. Below is an **example at the French national scale adapted from Billen et al. (2021)**, but our data would allow finer-scale assessments.

Currently, human excretions represent 10-20% of the food/excreta N losses and pollution, and only 1% of N inputs into the food system. Drastically redesigning the food/excreta system could reduce N losses and pollution by 2 to 3. Human excreta would then represent 10-20% of N inputs.

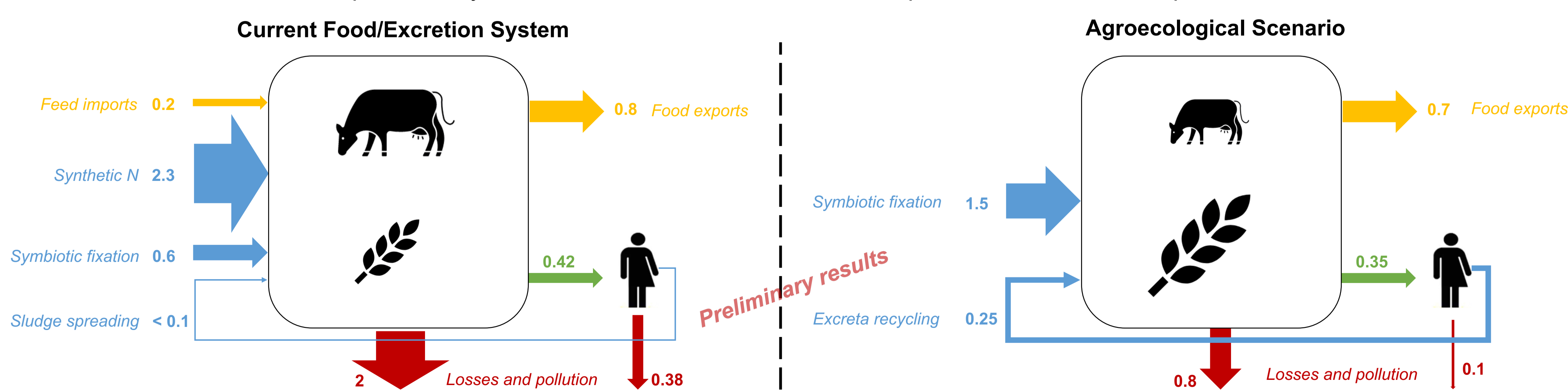


Figure 3. Main N flows in the current food/excretion system (left) and in an agroecological scenario (right). Units : ktN.

Example of urine-diverting toilets
Credit Jasiolek Krzysztofak³

References :

- 1 - Vigiak, O., Grizzetti, B., Zanni, M., Aloe, A., Dorati, C., Bouraoui, F., & Pistocchi, A. (2020). Domestic waste emissions to European waters in the 2010s. *Scientific Data*, 7(1), 1-13.
- 2 - Billen, G., Aguilera, E., Einarsson, R., Garnier, J., Gingrich, S., Grizzetti, B., ... & Sanz-Cobena, A. (2021). Reshaping the European agro-food system and closing its nitrogen cycle: The potential of combining dietary change, agroecology, and circularity. *One Earth*, 4(6), 839-850.
- 3 - Wald, Chelsea. "The urine revolution: How recycling pee could help to save the world." *Nature* 602.7896 (2022): 202-206.
- 4- Esculier, F. (2018). *Le système alimentation/excrétion des territoires urbains: régimes et transitions socio-écologiques* (Doctoral dissertation, Université Paris Est).