



HAL
open science

Metal line emission from galaxy haloes at z 1

Rajeshwari Dutta, Matteo Fossati, Michele Fumagalli, Mitchell Revalschi, Emma K Lofthouse, Dylan Nelson, Giulia Papini, Marc Rafelski, Sebastiano Cantalupo, Fabrizio Arrigoni Battaia, et al.

► **To cite this version:**

Rajeshwari Dutta, Matteo Fossati, Michele Fumagalli, Mitchell Revalschi, Emma K Lofthouse, et al.. Metal line emission from galaxy haloes at z 1. *Monthly Notices of the Royal Astronomical Society*, 2023, 522 (1), pp.535-558. 10.1093/mnras/stad1002 . hal-04021925

HAL Id: hal-04021925

<https://hal.science/hal-04021925>

Submitted on 24 May 2024

HAL is a multi-disciplinary open access archive for the deposit and dissemination of scientific research documents, whether they are published or not. The documents may come from teaching and research institutions in France or abroad, or from public or private research centers.

L'archive ouverte pluridisciplinaire **HAL**, est destinée au dépôt et à la diffusion de documents scientifiques de niveau recherche, publiés ou non, émanant des établissements d'enseignement et de recherche français ou étrangers, des laboratoires publics ou privés.



Distributed under a Creative Commons Attribution 4.0 International License

Metal line emission from galaxy haloes at $z \approx 1$

Rajeshwari Dutta^{1,2}★, Matteo Fossati^{1,2}, Michele Fumagalli^{1,3}, Mitchell Revalski⁴,
 Emma K. Lofthouse^{1,2}, Dylan Nelson^{1,5}, Giulia Papini¹, Marc Rafelski^{4,6}, Sebastiano Cantalupo¹,
 Fabrizio Arrigoni Battaia^{1,7}, Pratika Dayal^{1,8}, Alessia Longobardi^{1,2}, Celine Péroux^{1,9,10},
 Laura J. Prichard^{1,4} and J. Xavier Prochaska¹¹

¹Dipartimento di Fisica G. Occhialini, Università degli Studi di Milano-Bicocca, Piazza della Scienza 3, I-20126 Milano, Italy

²INAF – Osservatorio Astronomico di Brera, via Bianchi 46, I-23087 Merate (LC), Italy

³INAF – Osservatorio Astronomico di Trieste, via G. B. Tiepolo 11, I-34143 Trieste, Italy

⁴Space Telescope Science Institute, 3700 San Martin Drive, Baltimore, MD 21218, USA

⁵Institut für theoretische Astrophysik, Zentrum für Astronomie, Universität Heidelberg, Albert-Ueberle-Straße 2, D-69120 Heidelberg, Germany

⁶Department of Physics and Astronomy, Johns Hopkins University, Baltimore, MD 21218, USA

⁷Max-Planck-Institut für Astrophysik, Karl-Schwarzschild-Straße 1, D-85748 Garching bei München, Germany

⁸Kapteyn Astronomical Institute, University of Groningen, PO Box 800, NL-9700 AV Groningen, the Netherlands

⁹European Southern Observatory, Karl-Schwarzschild-Straße 2, D-85748 Garching bei München, Germany

¹⁰Aix Marseille Université, CNRS, LAM (Laboratoire d’Astrophysique de Marseille) UMR 7326, F-13388 Marseille, France

¹¹Department of Astronomy and Astrophysics, UCO/Lick Observatory, University of California, 1156 High Street, Santa Cruz, CA 95064, USA

Accepted 2023 March 31. Received 2023 March 31; in original form 2022 December 16

ABSTRACT

We present a study of the metal-enriched halo gas, traced using Mg II and [O II] emission lines, in two large, blind galaxy surveys – the MUSE (Multi Unit Spectroscopic Explorer) Analysis of Gas around Galaxies (MAGG) and the MUSE Ultra Deep Field (MUDF). By stacking a sample of ≈ 600 galaxies (stellar masses $M_* \approx 10^{6-12} M_\odot$), we characterize for the first time the average metal line emission from a general population of galaxy haloes at $0.7 \leq z \leq 1.5$. The Mg II and [O II] line emission extends farther out than the stellar continuum emission, on average out to ≈ 25 and ≈ 45 kpc, respectively, at a surface brightness (SB) level of $10^{-20} \text{ erg s}^{-1} \text{ cm}^{-2} \text{ arcsec}^{-2}$. The radial profile of the Mg II SB is shallower than that of the [O II], suggesting that the resonant Mg II emission is affected by dust and radiative transfer effects. The [O II] to Mg II SB ratio is ≈ 3 over ≈ 20 – 40 kpc, also indicating a significant *in situ* origin of the extended metal emission. The average SB profiles are intrinsically brighter by a factor of ≈ 2 – 3 and more radially extended by a factor of ≈ 1.3 at $1.0 < z \leq 1.5$ than at $0.7 \leq z \leq 1.0$. The average extent of the metal emission also increases independently with increasing stellar mass and in overdense group environments. When considering individual detections, we find extended [O II] emission up to ≈ 50 kpc around ≈ 30 – 40 per cent of the group galaxies, and extended (≈ 30 – 40 kpc) Mg II emission around two $z \approx 1$ quasars in groups, which could arise from outflows or environmental processes.

Key words: galaxies: evolution – galaxies: haloes – galaxies: high-redshift – galaxies: interactions – ultraviolet: ISM.

1 INTRODUCTION

The circumgalactic medium (CGM; Tumlinson, Peebles & Werk 2017; Péroux & Howk 2020), which acts as the interface between galaxies and the wider environment, is a key aspect of galaxy evolution. Not only does the CGM mediate the accretion and ejection of baryons to and from galaxies, it also modulates larger scale interactions between galaxies and the environment (e.g. Burchett et al. 2018; Fossati et al. 2019b; Dutta et al. 2020, 2021). The most viable method of studying the diffuse halo gas has been through absorption against a bright background source such as a quasar (Sargent et al. 1980). Significant progress has been made over the last few decades in statistically characterizing the distribution and

physical conditions of the multiphase halo gas by cross-correlating absorption lines and galaxy surveys at $z < 2$ (e.g. Prochaska et al. 2011a; Tumlinson et al. 2013; Chen et al. 2020; Dutta et al. 2020, 2021; Wilde et al. 2021; Péroux et al. 2022; Berg et al. 2023; Weng et al. 2023) and at $z > 2$ (e.g. Rudie et al. 2012; Turner et al. 2014; Bielby et al. 2020; Lofthouse et al. 2020, 2023; Muzahid et al. 2021; Galbiati et al. 2023).

However, absorption-line measurements along pencil-beam sightlines are generally unable to provide a complete mapping of the halo gas distribution. Systems in which it is possible to conduct spatially resolved studies of the CGM in absorption either via a higher spatial density of background sources such as lensed (e.g. Rauch, Sargent & Barlow 2001; Chen et al. 2014; Rubin et al. 2015; Zahedy et al. 2016; Augustin et al. 2021) and multiple quasars (e.g. Martin et al. 2010; Bowen et al. 2016; Lehner et al. 2020; Zheng et al. 2020; Beckett et al. 2021; Mintz et al. 2022), or via spatially resolved background

* E-mail: rajeshwari.dutta@unimib.it

sources (e.g. lensed or extended galaxies; Lopez et al. 2018; Péroux et al. 2018; Tejos et al. 2021) are rare.

In contrast, spatially resolved emission allows us to directly map the gas, at least at moderate-to-high densities, in and around galaxies and to place more stringent constraints on the extent and physical properties of gas, particularly in cases where multiple line diagnostics can be obtained. However, it has been challenging to detect the low surface brightness (SB) halo gas at cosmological distances in emission. Past efforts to detect the CGM in emission have mostly focused on Ly α emission around high-redshift quasars, whose larger photoionizing flux can greatly boost the emission (e.g. Cantalupo et al. 2005, 2014; Christensen et al. 2006; Hennawi et al. 2015), stacking analysis of massive Lyman-break galaxies (LBGs; Steidel et al. 2011), or low-redshift ($z \leq 0.2$) galaxies (e.g. Hayes et al. 2016; Zhang et al. 2016).

In the past few years, optical integral field unit (IFU) spectrographs, such as the Multi Unit Spectroscopic Explorer (MUSE; Bacon et al. 2010) on the Very Large Telescope (VLT) and the Keck Cosmic Web Imager (KCWI; Morrissey et al. 2018), have ushered in a new era of CGM observations in emission. Using these instruments, extended Ly α nebulae are now routinely detected around $z \gtrsim 2$ –4 quasars (e.g. Borisova et al. 2016; Arrigoni Battaia et al. 2019; Cai et al. 2019; Farina et al. 2019; Fossati et al. 2021; Mackenzie et al. 2021). Moreover, the sensitive SB limits reached by these instruments have enabled detection of Ly α haloes around typical star-forming galaxies (e.g. Wisotzki et al. 2016; Leclercq et al. 2017, 2020; Kusakabe et al. 2022) and extended Ly α emission from larger scale structures (e.g. Wisotzki et al. 2018; Umehata et al. 2019; Bacon et al. 2021) at $z \gtrsim 3$.

The metal-enriched halo gas has been more challenging to detect (Rickards Vaught et al. 2019), as expected from theoretical grounds due to their lower SB (Bertone & Schaye 2012; Frank et al. 2012; Piacitelli et al. 2022). This technique has nevertheless seen many recent successes, such as the detection of extended nebulae in [O II] and [O III] emission around quasars (Johnson et al. 2018, 2022; Helton et al. 2021), galaxy groups and clusters (Epinat et al. 2018; Boselli et al. 2019; Chen et al. 2019), and ultraluminous galaxies (Rupke et al. 2019) at $z < 1$. Furthermore, extended Mg II emission has been detected around a few galaxies at $z < 2$ using long-slit spectroscopy (Rubin et al. 2011; Martin et al. 2013) and IFU observations (Rupke et al. 2019; Burchett et al. 2021; Zabl et al. 2021; Shaban et al. 2022). Recently, there has been a remarkable detection of extended Mg II emission from the intragroup medium of a $z \approx 1.3$ group using deep MUSE observations (Leclercq et al. 2022).

Despite this rapid acceleration in direct detections of the CGM in emission, observations of metal line emission from galaxy haloes to date have been mostly limited to extreme systems such as active or starbursts galaxies or highly overdense groups. To put robust constraints on galaxy formation models (e.g. Corlies & Schiminovich 2016; Nelson et al. 2021; Piacitelli et al. 2022), it is imperative to spatially resolve and map the metal line emission from gaseous haloes around more normal galaxies, and conduct complete systematic studies in larger samples. While detection of metal-emitting haloes around individual galaxies at $z \gtrsim 1$ is still challenging, the average metal emission around a population of galaxies can be studied through stacking the IFU data of a statistical sample of galaxies. Such an investigation is now achievable thanks to the medium–deep data available from recent large, blind galaxy surveys with IFUs. In this work, we utilize two such surveys, which are complementary in survey volume and depth – the medium–deep (≈ 5 –10 h) MUSE Analysis of Gas around Galaxies (MAGG; Lofthouse et al. 2020), and the highly sensitive (≈ 150 h) MUSE Ultra Deep Field (MUDF;

Fossati et al. 2019b) – to study the average Mg II and [O II] line emission from galaxy haloes and from individual systems at $z \approx 0.7$ –1.5.

The structure of this paper is as follows. First, we provide a brief description of the galaxy sample built from the MAGG and MUDF surveys in Section 2. Then, in Section 3, we describe the methodology adopted to stack the MUSE data. Next, we present the results in Section 4, first from the stacking of metal line emission around galaxies in Section 4.1, and then from the search for extended emission in groups of galaxies in Section 4.2. We discuss our results and compare them with literature results based on observations and simulations in Section 5. Finally, we summarize our results in Section 6. Throughout this work, we adopt a *Planck* 2015 cosmology with $H_0 = 67.7 \text{ km s}^{-1} \text{ Mpc}^{-1}$ and $\Omega_M = 0.307$ (Planck Collaboration XIII 2016), express the distances in proper units, and the magnitudes in the AB system.

2 DATA AND SAMPLE SELECTION

2.1 The MAGG survey

The MAGG survey is built upon a VLT/MUSE large programme (ID: 197.A-0384, PI: M. Fumagalli) that is supplemented by archival data of a guaranteed time observation programme (PI: J. Schaye). In total there are 28 fields that are centred on quasars at $z \approx 3.2$ –4.5. Each of these fields has been observed for a total on-source time of ≈ 4 h, except for two fields that have archival data leading to longer exposure times of ≈ 10 h. The description of the data and of the reduction process is presented in Lofthouse et al. (2020, see their table 1 and section 3.2). In brief, the MUSE data are first reduced using the standard ESO pipeline (version 2.4.1; Weilbacher 2015), and then the data are post-processed using tools (CUBEFIX and CUBESHARP) that are part of the CUBEEXTRACTOR package (CUBEX, version 1.8; Cantalupo et al. 2019; Cantalupo, in preparation).

For this work, we use the sample of galaxies that are detected in continuum in the MUSE white-light images. The compilation of the continuum-detected galaxy sample is described in detail in Lofthouse et al. (2020) and Dutta et al. (2020). Briefly, the continuum sources are first identified from the white-light images using SEXTRACTOR (Bertin & Arnouts 1996), then the 1D spectra are extracted from the 3D cubes based on the 2D segmentation maps created by SEXTRACTOR, and finally the source redshifts are estimated using MARZ (Hinton et al. 2016). The MAGG sample of continuum-detected sources is 90 per cent complete down to $r \approx 26.3$ mag and the sample of sources with reliable redshifts is 90 per cent complete down to $r \approx 24.85$ mag (see fig. 5 of Lofthouse et al. 2023). For the stacking analysis presented in this work, we use a sample of 508 galaxies at $0.7 \leq z \leq 1.5$ that have reliable spectroscopic redshifts (redshift flag 3 and 4, see section 5.1 of Lofthouse et al. 2020). The redshift range is chosen such that both the Mg II and [O II] emission lines are covered in the MUSE spectra (wavelength coverage of 4650–9300 Å). The physical properties of the galaxies such as stellar mass (M_*) and star formation rate (SFR) are obtained by jointly fitting the MUSE spectra and photometry (derived in four top-hat pseudo-filters, see table 2 of Fossati et al. 2019b) with stellar population synthesis (SPS) models using the Monte Carlo Spectro-Photometric Fitter (MC-SPF; Fossati et al. 2018) as described in Fossati et al. (2019b) and Dutta et al. (2020). In brief, MC-SPF uses Bruzual & Charlot (2003) models at solar metallicity, the Chabrier (2003) initial mass function (IMF), nebular emission lines from the models of Byler et al. (2018), and dust attenuation law of Calzetti et al. (2000). The parameters and assumptions that go into the modelling are consistent with the ones

typically used in the literature for extragalactic surveys (e.g. Fossati et al. 2017).

2.2 The MUDF survey

The MUDF survey is based upon a recent VLT/MUSE large programme (ID: 1100.A-0528; PI: M. Fumagalli) that has obtained very deep MUSE observations (≈ 150 h on-source) of a 1.5×1.2 arcmin² region centred on two quasars at $z \approx 3.2$. In this work, we use the MUSE observations that have been acquired till 2021 November 21, consisting of 344 exposures of 1450 s each or ≈ 138 h in total. The MUSE observations of the MUDF field have been designed to collect maximum data in the central regions between the two quasars. Therefore, taking into account the detector gaps, the exposure time goes from ≈ 115 h in the centre to ≈ 2 h in the outer regions. The MUSE observations are complemented by a deep near-infrared (NIR) spectroscopic survey [*Hubble Space Telescope (HST)* ID: 15637; PIs: M. Rafelski and M. Fumagalli] consisting of 90 orbits using the Wide Field Camera 3 (WFC3) G141 grism on the *HST* and eight-orbit near-ultraviolet (NUV) imaging using *HST* WFC3/UVIS (ID: 15968; PI: M. Fossati).

The MUSE data reduction is described in detail in Fossati et al. (2019b) and follows the same methodology as for the MAGG survey. The *HST* data reduction is described in detail in Revalski et al. (2023). In brief, the individual F140W exposures were aligned and drizzled using the TWEAKREG and ASTRODRIZZLE tools, respectively, that are part of the DRIZZLEPAC software (Hoffmann et al. 2021). The final F140W image is used as a reference for detection of sources and alignment with other images. A segmentation map of sources in the F140W image was constructed by running SEXTRACTOR with ‘deep’ and ‘shallow’ thresholds to better characterize the shapes and extents of faint and bright sources, respectively (see table 3 of Revalski et al. 2023, for details of the parameters used). The photometry in the five different *HST* filters (F140W, F125W, F702W, F450W, and F336W) was measured using SEXTRACTOR in dual-image mode, where sources are first detected in the F140W image and then analysed in each of the filters.

To extract the MUSE photometry, we used T-PHOT (Merlin et al. 2015), and the higher resolution F140W image, point spread function (PSF) model, and source catalogue. A matching kernel between the two PSFs (obtained using the ratio of Fourier transforms) is used to convolve the F140W image to have the same PSF as the MUSE one. The MUSE data are first resampled on to the F140W pixel grid. Then, T-PHOT is run two times, where the second run uses the ‘multikernel’ option to regenerate templates using spatially varying transfer kernels generated in the first run. The MUSE photometry is extracted in four top-hat pseudo-filters as defined in table 2 of Fossati et al. (2019b). The MUSE 1D spectra are extracted based on the F140W SEXTRACTOR segmentation map that is convolved with the MUSE PSF mentioned above. The MUSE optical spectra are then visually inspected using a custom-developed tool by different coauthors (GP, MFo, and RD) to estimate the source redshifts. The redshifts are further given a flag following the same classification scheme as adopted for the MAGG survey (see Section 2.1). We are able to estimate reliable redshifts for 90 per cent of the sources down to F140W ≈ 20.3 mag and for 50 per cent of the sources down to F140W ≈ 24.4 mag. Finally, the MUSE spectra and photometry and *HST* photometry are jointly fit by MC-SPF to derive the galaxy properties similar to the MAGG survey (see Section 2.1).

For the stacking of [O II] emission in this work, we use a sample of 93 galaxies from MUDF with reliable redshifts at $0.7 \leq z \leq 1.5$. For the stacking of the Mg II emission, we exclude certain wavelength

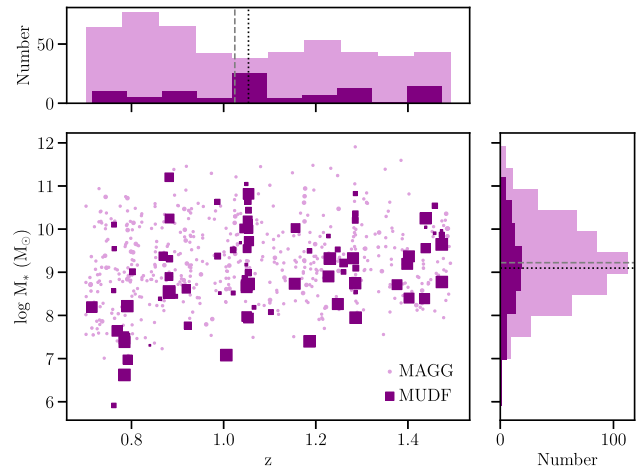


Figure 1. Stellar mass versus redshift of the galaxies used for stacking. Galaxies from the MAGG survey are shown as pink circles, while those from the MUDF survey are shown as purple squares. The size of the symbols represents the MUSE observing time, which ranges from ≈ 4 to ≈ 10 h in the case of MAGG galaxies, and ≈ 2 to ≈ 112 h in the case of MUDF galaxies. The plots to the top and to the right show the histograms (pink for MAGG and purple for MUDF) of the redshifts and stellar masses, respectively. The median values are marked by dashed (MAGG) and dotted (MUDF) lines.

ranges (see Section 3 for details), which leads to a sample of 67 galaxies at $0.7 \leq z \leq 1.5$ in MUDF. Fig. 1 shows the distribution of the stellar mass and redshift of all the galaxies from the MAGG and the MUDF surveys that are used in this work. The stellar masses of the galaxies range from $8 \times 10^5 M_{\odot}$ to $8 \times 10^{11} M_{\odot}$, with a median mass of $\approx 2 \times 10^9 M_{\odot}$. The uncertainty in the base 10 logarithm of the stellar mass is typically between 0.1 and 0.2 dex. The median redshift of the sample is $z \approx 1.04$. The total MUSE exposure time of all the galaxies used for [O II] emission stacking is ≈ 7140 h, while it is ≈ 5674 h in the case of Mg II. While the galaxy sample used for Mg II stacking is slightly smaller than the one for [O II], we have checked that the distributions of stellar mass and redshift of the two samples are consistent with being drawn from the same parent population [p -value from two-sided Kolmogorov–Smirnov (KS) test $\gtrsim 0.99$].

3 STACKING METHODOLOGY

We outline here the method adopted to stack the metal line emission around galaxies in the MUSE 3D cubes. First, we extract subcubes centred around each of the galaxies. To do this, we convert the distance of each pixel from the galaxy centre into a physical distance (in kpc) at the redshift of the galaxy. Similarly, we convert the observed spectral wavelength into the rest wavelength. We mask all the continuum sources using the SEXTRACTOR segmentation map except for the galaxy of interest. Then we interpolate the cube such that the galaxy is located at the centre of a common grid. In the case of MUDF, because it is a single-field observation, we further rotate the cube by a random angle around the galaxy position during the interpolation in order to ensure that residuals of sky subtraction and instrumental artefacts are randomly positioned in the final grid, and thus averaged down during stacking. This rotation is not found to be necessary in the case of MAGG, since these observations are taken in independent regions of the sky and at different times. In this way, we extract subcubes of 200×200 kpc² centred on each galaxy that cover $\pm 100 \text{ \AA}$ around the metal line (Mg II and [O II]). We note that we do not take into account inclination and orientation of the galaxies

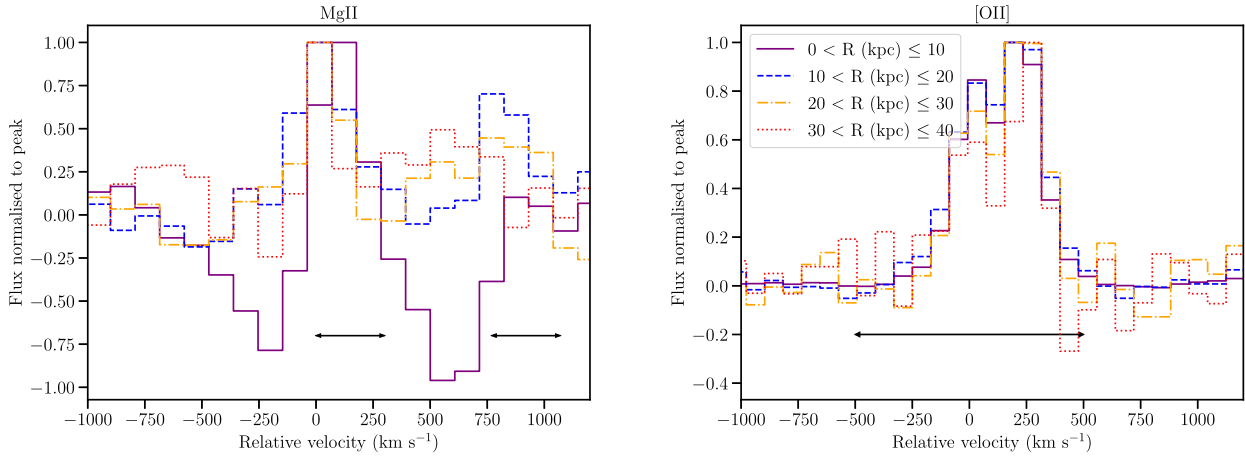


Figure 2. Left: the median-stacked spectra of Mg II emission in circular annuli of 0–10, 10–20, 20–30, and 30–40 kpc (as indicated in the right-hand panel) from the galaxy centres for the full sample. The flux has been normalized to the peak value. The velocity range used for generating the narrow-band (NB) images is marked by black arrows. Right: same as in the left-hand plot for [O II] emission.

for the primary stacking analysis presented in this work. However, we investigate the effect of orientation on the stacked emission in Section 4.1.4.

Next, we stack all the cubes using both mean and median statistics. Since we are interested in probing the extended metal line emission around galaxies, we need to subtract the stellar continuum emission first. We perform a local continuum subtraction for this purpose. At each pixel in the stacked cube, we extract the spectra within ± 2000 km s⁻¹ of the line (Mg II and [O II]), fit a third-order spline to the continuum emission excluding the region around the line, and subtract this continuum fit from the spectra. We also investigated an alternate method of continuum subtraction using median filtering, as commonly done in the literature (e.g. when searching for Ly α emission lines; Fossati et al. 2021). However, given the P Cygni-like profiles of several Mg II emitting galaxies and a non-flat continuum in this wavelength range, this method was found to leave stronger negative residuals. Therefore, we prefer the local continuum subtraction method.

We then generate pseudo-narrow-band (NB) images around the lines from the continuum-subtracted cubes. To generate the NB images, we use the rest-frame velocity range of ± 500 km s⁻¹ around the [O II] 3727 Å line (which also covers the [O II] 3729 Å line of the doublet), whereas for Mg II, we use the velocity range of 0–300 km s⁻¹ around both the Mg II doublet lines ($\lambda\lambda 2796, 2803$ Å). The choice of velocity width over which to generate the NB images is motivated by the velocity range over which the line emission is found in the 1D spectra extracted from the stacked cube of all the galaxies. The 1D spectra extracted in annuli of 10 kpc up to 40 kpc around the galaxy centre and normalized to the peak value are shown in Fig. 2. In the central 10 kpc region, the Mg II emission line shows a P Cygni-like profile [as found in the interstellar medium (ISM) of some galaxies; e.g. Weiner et al. 2009; Rubin et al. 2010; Prochaska, Kasen & Rubin 2011b; Erb et al. 2012; Martin et al. 2012], with blueshifted absorption and redshifted emission over 0–300 km s⁻¹. To avoid contamination by absorption in the central region, we select the above velocity range around both the Mg II doublet lines for generating NB images. The [O II] doublet emission profile lies within the velocity range ± 500 km s⁻¹ in all the annuli. Additionally, we performed tests using different velocity windows (± 1000 km s⁻¹ for [O II] and ± 300 km s⁻¹ for Mg II) and found that the relative trends found in this work are not affected by this choice.

Finally, we estimated the azimuthally averaged radial SB profiles based on the NB images in circular annuli of 10 kpc centred on the galaxy positions. To estimate the uncertainties on the SB, we performed a bootstrap analysis where we repeated the above stacking process 100 times with repetitions. We use the 16th and the 84th percentiles of the bootstrapped values to obtain an equivalent 1σ error. We emphasize that the uncertainties determined from the bootstrap method represent the sample variance, which can be significant across a large interval of stellar mass. To estimate and compare the size of the emission in different mass samples, we performed a curve-of-growth analysis where we calculate the flux in concentric circles with radii increasing by 0.1 kpc. In our analysis (see Section 4.1), we find that the line emission in the NB images typically extends up to ≈ 30 kpc in different samples. Therefore, we define here R_{50} and R_{90} as the radii of the circular apertures that contain 50 per cent and 90 per cent of the total flux within a circular aperture of 30 kpc, respectively. We note that the ratios of the sizes of the line and the continuum emission, and of the Mg II and [O II] line emission, are not sensitive to the choice of the radius at which we normalize the flux. The 1σ errors on R_{50} and R_{90} are obtained from the 16th and the 84th percentiles of the bootstrapped values.

Furthermore, in order to check whether the average metal line emission is more spatially extended than the average stellar continuum emission, we generated NB images from the stacked cubes before subtracting the continuum emission. For this we averaged over four control windows that are located at ± 2000 and ± 4000 km s⁻¹ around the line, and that have the same velocity width as that used for generating the NB image of the line. We have checked that using control windows at different velocity locations does not affect the results. The azimuthally averaged radial SB profile of the continuum emission was then estimated in circular annuli of 10 kpc similar to the line emission. We note that the SB profile of the continuum emission remains at a constant level (typically $\approx 2 \times 10^{-20}$ erg s⁻¹ cm⁻² arcsec⁻²) at large distances (> 50 kpc) from the galaxy centres because of low-level sky residuals. We estimated the average emission in the outermost annuli and subtracted this constant background value from the NB images and SB profiles of the continuum emission. Lastly, as a quality check, we generated NB images from the continuum-subtracted cubes, averaged over the four control windows mentioned above.

Because the MUSE observations of the MUDF survey are obtained in the laser-assisted adaptive optics (AO) mode, the wavelength range of 5760–6010 Å is excluded by the Na notch filter that masks the laser emission. Therefore, for the stacking of the Mg II emission from MUDF galaxies, we exclude the redshift range, $z = 1.05$ – 1.15 . In addition, while inspecting the 1D spectra of the galaxies, we noticed that the Mg II wavelength range in a few cases is affected by strong spikes that could be due to sky subtraction residuals, instrumental artefacts, or contamination from Raman lines caused by the Na laser during the AO observations. These strong spikes at <7000 Å are also seen in the stacked sky spectra obtained from the full MUDF cube. Therefore, we excluded in total 26 galaxies in the final Mg II stack. In the case of the MAGG survey, we checked that removing the corresponding redshift ranges for the Mg II stack does not lead to any difference in the final results. The spikes noted in the MUDF stacked sky spectra are not found in the stacked sky spectra of the MAGG survey. This is reasonable since the MAGG survey comprises MUSE observations of 28 different fields taken at different times, and thus any systematics due to sky or instrument should be averaged out by the stacking.

The wavelength range used for stacking the [O II] emission in this work, particularly at $z > 1$, is affected by sky lines. We checked that excluding some of the wavelength ranges that are most affected by sky lines does not change the results for the [O II] stacked emission. Since we stack in the rest-frame wavelength that should mitigate any systematic effects of sky subtraction residuals on average. Finally, to check that the stacked line emission is not dominated by individual sources, we performed the 3D stacking after removing at random a few of the galaxies that show strong line (Mg II, [O II]) emission in the 1D spectra. This exercise was not found to affect the results. In any case, this would be accounted for in the uncertainties from the bootstrapping analysis, and the results based on median stacking should be robust against individual outliers.

In Section 4.1, we present the NB images and SB profiles obtained from the 3D stacking of the MUSE cubes for Mg II and [O II] emission for the full sample and also for different redshift, stellar mass, and environment subsamples. The NB images have been smoothed using a Gaussian kernel of standard deviation 0.3 arcsec for display purpose, but the SB profiles and size estimates are obtained from the unsmoothed NB images. We present in most cases the stacking results using median statistics. These are found to be overall consistent with the results using mean statistics within the 1σ uncertainties. The SB profiles shown here are the observed ones, except for when we compare the SB profiles at different redshifts, in which case we correct the profiles for cosmological SB dimming using the median redshift of the underlying subsample. We tested that the results obtained using this method are consistent within 1σ uncertainties with that obtained if we instead correct the individual subcubes for cosmological SB dimming before stacking.

4 RESULTS

In Section 4.1, we investigate the average metal line emission around galaxies in our sample through stacking. Then, in Section 4.2, we investigate whether there is extended metal line emission in a subsample of individual galaxy groups.

4.1 Extended emission in stacked images

Fig. 3 shows the reconstructed NB images of Mg II (top panel) and [O II] (bottom panel) line emission obtained from median stacking the MUSE cubes of the full galaxy sample. For comparison, the NB

images of the continuum emission and of the continuum-subtracted emission in control windows are also shown. The 3σ SB limit for a 1 arcsec² aperture and a 1000 km s⁻¹ velocity window is 10^{-20} erg s⁻¹ cm⁻² arcsec⁻². Both Mg II and [O II] line emission are clearly detected, and they appear to be more extended than the average continuum emission. To quantify the radial profile of the emission, we show in Fig. 4 the azimuthally averaged SB profiles in circular annuli of 10 kpc from the centre for Mg II (left) and [O II] (right). We show the profiles obtained using both mean and median statistics. The mean stacking typically gives slightly larger values of SB than the median stacking, which is expected if the distribution is not symmetric around the median, however the profiles are overall consistent within the 1σ uncertainty.

The Mg II and [O II] line emission are detected out to ≈ 30 – 50 kpc from the centre, beyond which the SB drops below the 3σ limit ($\approx 2 \times 10^{-21}$ erg s⁻¹ cm⁻² arcsec⁻²).¹ On the other hand, the continuum emission is detected out to ≈ 15 kpc from the centre. The Mg II line emission is more radially extended compared to the continuum emission over ≈ 15 – 30 kpc, while the [O II] line emission is more radially extended over ≈ 15 – 45 kpc. At a fixed SB level of 10^{-20} erg s⁻¹ cm⁻² arcsec⁻², the mean-(median)-stacked Mg II emission has a radial extent of $\approx 30(25)$ kpc or ≈ 2 times larger than that the radial extent of the continuum emission, while the radial extent of the mean-(median)-stacked [O II] emission is $\approx 50(45)$ kpc or ≈ 3 times larger than that of the continuum emission. This can be considered as the average extent of the metal-emitting halo gas at the observed SB level. We additionally note that the line emission is more extended than the typical PSF of the MUSE data (full width at half-maximum $\lesssim 0.6$ arcsec or $\lesssim 5$ kpc at $z = 1$).

To compare the sizes of the emission, we estimate the flux curve-of-growth normalized to the total flux within 30 kpc as shown in Fig. 5. The estimates of R_{50} and R_{90} for Mg II, [O II] and the continuum emission are provided in Table 1. The ratios of R_{50} and R_{90} of Mg II line to continuum emission are ≈ 2.9 and ≈ 2.7 , respectively, while the corresponding ratios of [O II] line to continuum emission are ≈ 1.2 and ≈ 1.8 , respectively. The ratios of R_{50} and R_{90} of Mg II to [O II] line emission are ≈ 2.5 and ≈ 1.5 . From these ratios and Fig. 5, it is evident that the [O II] emission follows the continuum emission in the inner region ($\lesssim 5$ kpc), but it becomes more extended than the continuum with increasing radius. The Mg II emission is clearly more extended than the continuum and the [O II] emission, with a shallower profile starting from the inner region.

If we consider that the central circular region of radius 15 kpc traces the stellar disc, and that the circular annulus between radii 15 and 30 kpc traces the halo, then we find that the total luminosity of the [O II] emission at $z \approx 1$ from the disc ($\approx 2 \times 10^{41}$ erg s⁻¹) is an order of magnitude higher than that from the halo ($\approx 2 \times 10^{40}$ erg s⁻¹). On the other hand, the total Mg II luminosity at $z \approx 1$ in the central 15 kpc disc ($\approx 7 \times 10^{39}$ erg s⁻¹) is comparable to that from the halo ($\approx 6 \times 10^{39}$ erg s⁻¹). We discuss and compare the Mg II and [O II] emission further in Section 5.3. In the following sections, we study the evolution of the average metal line emission from galaxy haloes with redshift, stellar mass, and environment and the dependence of the emission on orientation. The average metal line SB within a circular aperture of radius 30 kpc in different subsamples is listed in Table 2.

¹The limits on the average SB profiles (dashed green lines in Fig. 4) are estimated based on the noise per pixel in the outer annuli and the number of pixels in each annuli.

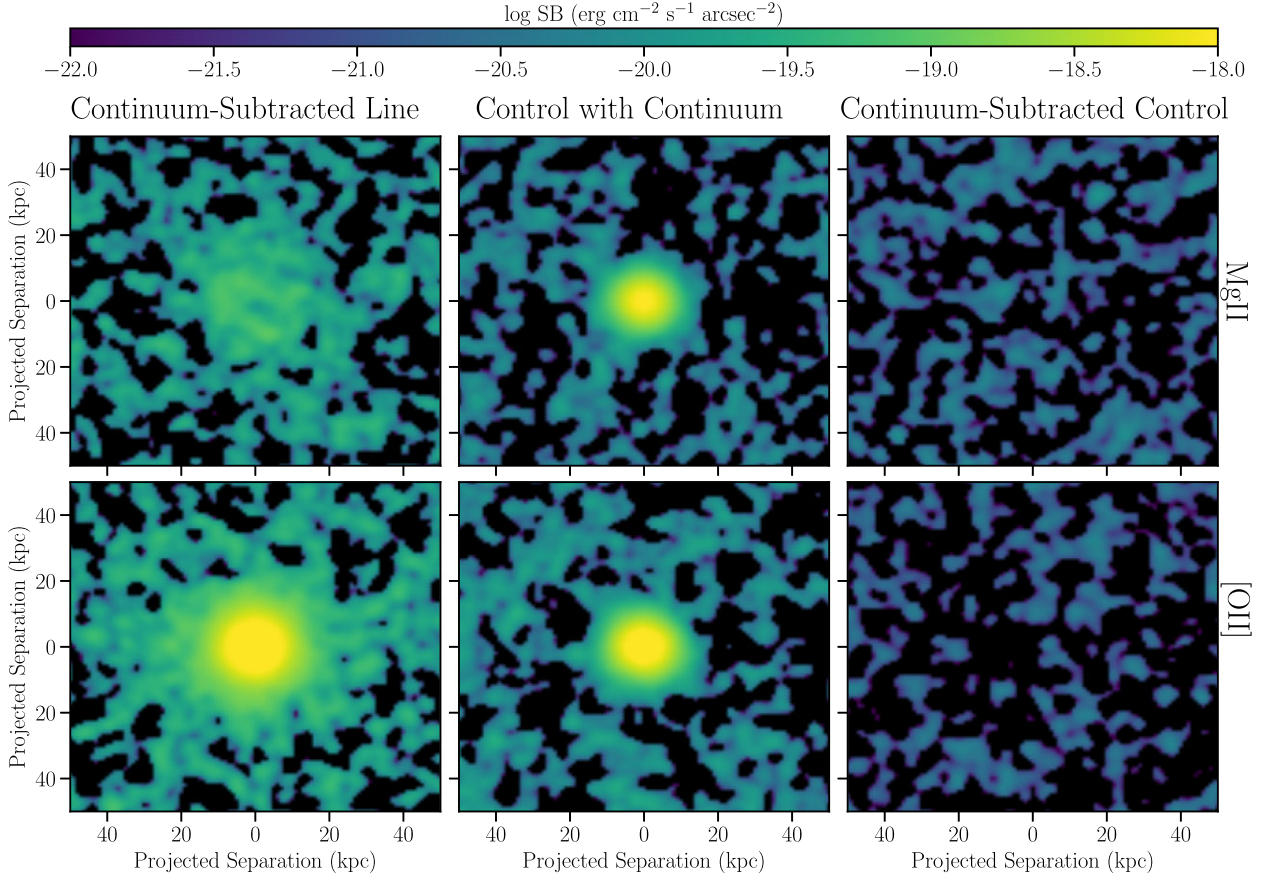


Figure 3. Median-stacked pseudo-narrow-band (NB) images for the full sample. The top panels show the results for Mg II and the bottom panels show the results for [O II]. From left to right, the panels show the stacked line emission after subtracting the continuum, the stacked continuum emission in control windows, and the stacked emission in control windows after subtracting the continuum (see Section 3 for details).

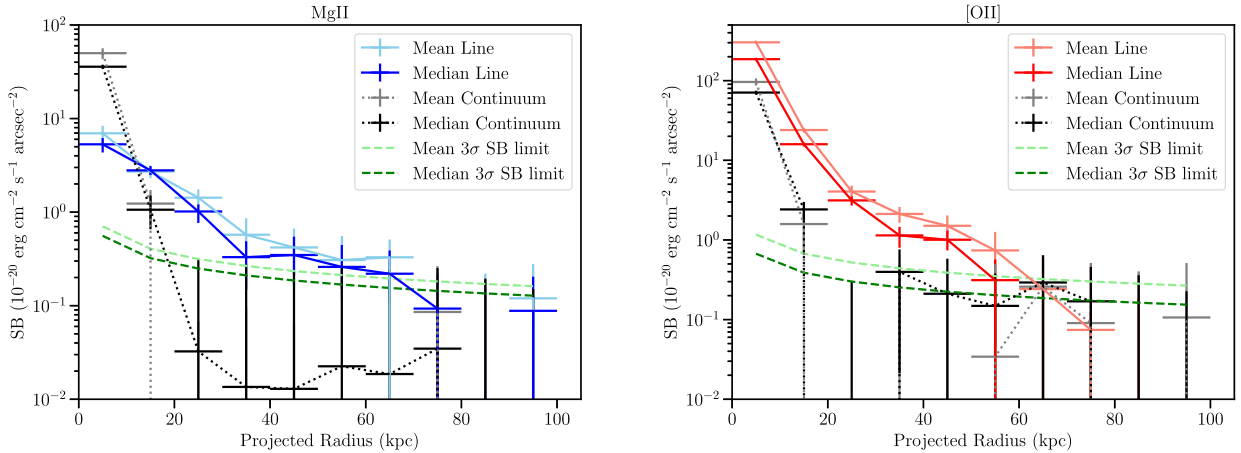


Figure 4. Left: the mean- and median-stacked azimuthally averaged radial SB profiles of Mg II emission in circular annuli of 10 kpc from the galaxy centres are shown as light blue and dark blue solid lines, respectively. The mean and median SB profiles of the continuum emission in control windows are shown as grey and black dotted lines, respectively. The 3σ SB limits for the mean and median profiles are shown as light and dark green dashed lines, respectively. Right: same as in the left-hand plot for [O II] emission. The mean and median [O II] SB profiles are shown as pink and red solid lines, respectively. The error bars represent the 1σ uncertainties from bootstrapping analysis.

4.1.1 Evolution with redshift

In order to check how the average metal line emission evolves with redshift, we divide the full sample into two redshift bins: $0.7 \leq z \leq$

1.0 (259 galaxies, median $z \approx 0.82$, median $M_* \approx 10^9 M_\odot$) and $1.0 < z \leq 1.5$ (342 galaxies, median $z \approx 1.22$, median $M_* \approx 2 \times 10^9 M_\odot$). In Fig. 6, we show the median-stacked pseudo-NB images of Mg II (top panel) and [O II] (bottom panel) line emission in these two redshift

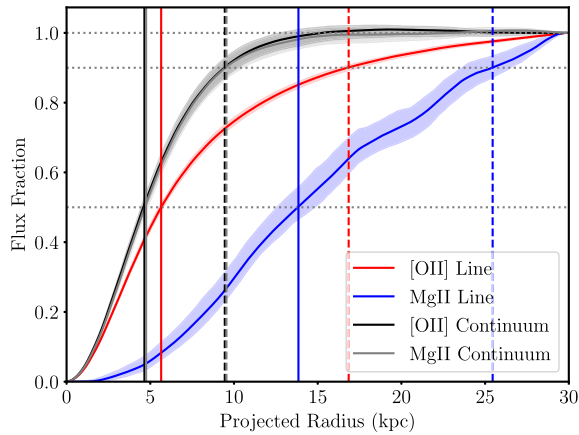


Figure 5. The flux curve-of-growth normalized to the total flux within 30 kpc – in blue for Mg II line emission, in red for [O II] line emission, in grey for Mg II continuum emission, and in black for [O II] continuum emission. The shaded regions represent the 1σ uncertainties from bootstrapping analysis. The vertical solid and dashed lines indicate the radii, R_{50} and R_{90} , of the circular apertures that contain 50 per cent and 90 per cent of the total flux within a circular aperture of 30 kpc, respectively. The colour coding for the vertical lines is the same as for the flux fraction curves. The horizontal dotted lines indicate flux fractions of 0.5, 0.9, and 1.0.

ranges along with that of the corresponding control continuum emission. Mg II and [O II] line emission are detected in both redshift ranges, with the emission at $z > 1$ being more extended. In Fig. 7, we show the azimuthally averaged SB profiles that have been corrected for cosmological dimming using the median redshift of the above two redshift bins for Mg II (left) and [O II] (right).

First, the cosmological-corrected metal SB profiles are brighter at the higher redshift range. The Mg II SB profile at $z > 1$ is ≈ 3 times brighter than that at $z \leq 1$ within a circular aperture of radius 30 kpc, while the [O II] SB profile at $z > 1$ is ≈ 2 times brighter than that at $z \leq 1$ within the same aperture (see Table 2). Secondly, the metal line SB profiles at both redshift ranges are more radially extended compared to the continuum emission SB profiles, being brighter than the continuum emission over ≈ 15 –30 kpc. Lastly, the metal line SB profiles at $z > 1$ are also more radially extended compared to those at $z \leq 1$. At a (corrected) SB level of $10^{-19} \text{ erg s}^{-1} \text{ cm}^{-2} \text{ arcsec}^{-2}$, the Mg II profile at $z \leq 1$ has an extent of ≈ 25 kpc, whereas the Mg II profile at $z > 1$ has an extent of ≈ 33 kpc. Similarly, at a (corrected)

Table 1. Estimates of the size of the emission in different samples. R_{50} and R_{90} are the radii in kpc of the circular apertures that contain 50 per cent and 90 per cent of the total flux within a circular aperture of 30 kpc. The errors are the 1σ uncertainties from bootstrapping analysis.

Sample	R_{50} (kpc)				R_{90} (kpc)			
	Mg II line	Mg II continuum	[O II] line	[O II] continuum	Mg II line	Mg II continuum	[O II] line	[O II] continuum
Full	$13.8^{+1.0}_{-1.2}$	$4.7^{+0.2}_{-0.2}$	$5.6^{+0.2}_{-0.2}$	$4.6^{+0.1}_{-0.1}$	$25.4^{+1.1}_{-1.8}$	$9.5^{+1.0}_{-0.6}$	$16.8^{+0.6}_{-0.6}$	$9.4^{+0.8}_{-0.6}$
$z \leq 1$	$12.9^{+2.9}_{-1.9}$	$4.7^{+0.2}_{-0.2}$	$5.6^{+0.2}_{-0.2}$	$4.6^{+0.2}_{-0.2}$	$24.2^{+3.6}_{-1.4}$	$9.3^{+1.3}_{-0.9}$	$16.8^{+0.8}_{-0.8}$	$9.6^{+1.0}_{-0.7}$
$z > 1$	$13.9^{+1.2}_{-1.2}$	$4.7^{+0.2}_{-0.2}$	$5.7^{+0.2}_{-0.2}$	$4.7^{+0.2}_{-0.2}$	$25.4^{+1.4}_{-2.2}$	$10.1^{+1.2}_{-1.1}$	$16.9^{+0.7}_{-0.7}$	$9.6^{+1.3}_{-1.2}$
$7 \leq \log M_* (M_\odot) < 8$	$2.5^{+7.0}_{-1.0}$	$4.1^{+1.3}_{-1.0}$	$3.7^{+0.3}_{-0.3}$	$2.9^{+1.0}_{-1.1}$	$4.0^{+22.0}_{-2.0}$	$8.3^{+2.0}_{-17.0}$	$8.2^{+1.7}_{-1.6}$	$8.0^{+2.0}_{-19.0}$
$8 \leq \log M_* (M_\odot) < 9$	$8.8^{+1.4}_{-0.9}$	$4.4^{+0.3}_{-0.3}$	$4.8^{+0.2}_{-0.2}$	$3.7^{+0.3}_{-0.4}$	$22.9^{+3.9}_{-7.2}$	$9.0^{+11.0}_{-2.0}$	$13.9^{+1.6}_{-1.7}$	$9.0^{+2.3}_{-1.3}$
$9 \leq \log M_* (M_\odot) < 10$	$14.1^{+0.9}_{-1.4}$	$4.5^{+0.3}_{-0.3}$	$5.7^{+0.2}_{-0.2}$	$4.4^{+0.3}_{-0.2}$	$25.3^{+1.0}_{-3.2}$	$9.0^{+1.1}_{-0.9}$	$16.8^{+0.6}_{-0.7}$	$9.1^{+2.3}_{-1.3}$
$10 \leq \log M_* (M_\odot) < 12$	^a	$5.5^{+0.3}_{-0.3}$	$7.1^{+0.3}_{-0.2}$	$5.2^{+0.2}_{-0.2}$	^a	$11.0^{+1.1}_{-0.9}$	$19.2^{+0.8}_{-0.8}$	$11.1^{+0.6}_{-0.6}$
Group	$14.5^{+2.2}_{-2.4}$	$4.9^{+0.4}_{-0.3}$	$5.9^{+0.3}_{-0.2}$	$4.8^{+0.3}_{-0.3}$	$27.0^{+1.0}_{-1.0}$	$10.8^{+2.3}_{-1.8}$	$19.3^{+0.8}_{-0.9}$	$11.7^{+3.3}_{-2.2}$
Single	$13.5^{+1.3}_{-1.4}$	$4.6^{+0.3}_{-0.2}$	$5.6^{+0.3}_{-0.2}$	$4.9^{+0.3}_{-0.5}$	$25.1^{+2.0}_{-4.0}$	$8.9^{+1.7}_{-1.0}$	$15.9^{+1.2}_{-0.7}$	$10.3^{+2.4}_{-2.4}$

^aMg II is detected in absorption in the central region in this stellar mass bin.

Table 2. Median values of the metal line surface brightness (SB) in units of $10^{-20} \text{ erg s}^{-1} \text{ cm}^{-2} \text{ arcsec}^{-2}$ within a circular aperture of radius 30 kpc for different samples. The errors are the 1σ uncertainties from bootstrapping analysis.

Sample	Mg II	[O II]
Full	$1.93^{+0.18}_{-0.28}$	$6.27^{+0.41}_{-0.55}$
$z \leq 1^a$	$18.13^{+5.27}_{-3.20}$	$77.95^{+7.86}_{-9.44}$
$z > 1^a$	$53.34^{+6.91}_{-5.55}$	$173.14^{+13.21}_{-21.17}$
$7 \leq \log M_* (M_\odot) < 8$	$0.59^{+0.71}_{-0.55}$	$3.64^{+1.62}_{-1.07}$
$8 \leq \log M_* (M_\odot) < 9$	$1.44^{+0.28}_{-0.35}$	$4.00^{+0.95}_{-0.56}$
$9 \leq \log M_* (M_\odot) < 10$	$2.85^{+0.38}_{-0.47}$	$8.96^{+0.94}_{-0.75}$
$10 \leq \log M_* (M_\odot) < 12$	$1.70^{+0.56}_{-0.57}$	$13.53^{+1.27}_{-1.18}$
Group	$2.60^{+0.47}_{-0.50}$	$9.47^{+0.94}_{-0.91}$
Single	$1.85^{+0.42}_{-0.43}$	$7.71^{+0.88}_{-1.04}$

^aCorrected for cosmological SB dimming.

SB level of $5 \times 10^{-19} \text{ erg s}^{-1} \text{ cm}^{-2} \text{ arcsec}^{-2}$, the extent of the [O II] profile at $z \leq 1$ is ≈ 24 kpc, whereas it is ≈ 32 kpc at $z > 1$. From Table 1, it can be seen that, similar to the full sample, the metal line emission has shallower profiles than the continuum emission, and the [O II] line emission is more centrally concentrated than the Mg II emission in both the redshift bins. Despite the R_{50} and R_{90} estimates of the metal line emission at $z \leq 1$ and at $z > 1$ being consistent within the uncertainties, there is a hint of both Mg II and [O II] emission being more extended at higher redshift.

As higher redshift samples are naturally more dominated by massive systems, we investigate to what extent the above evolution is driven by redshift and is independent of stellar mass. To do so, we formed two samples at $z \leq 1$ and at $z > 1$ that are matched in the base 10 logarithm of the stellar mass within ± 0.3 dex. This led to M_* -matched samples consisting of 183 and 190 galaxies for Mg II and [O II], respectively, in each of the two redshift bins. Based on a two-sided KS test, the maximum difference between the cumulative distributions of the stellar mass in the two redshift bins is ≈ 0.05 and the p -value is ≈ 0.98 and ≈ 0.95 for Mg II and [O II], respectively. On comparing the SB profiles (corrected for cosmological dimming) in the two redshift subsamples that are matched in stellar mass, we find that, although the uncertainties are larger due to the smaller sample sizes in this case, the metal line SB profiles are ≈ 2 –3 times brighter and more extended at $z > 1$ than at $z \leq 1$. This is similar to what we find for the full sample, indicating that there is indeed likely to be

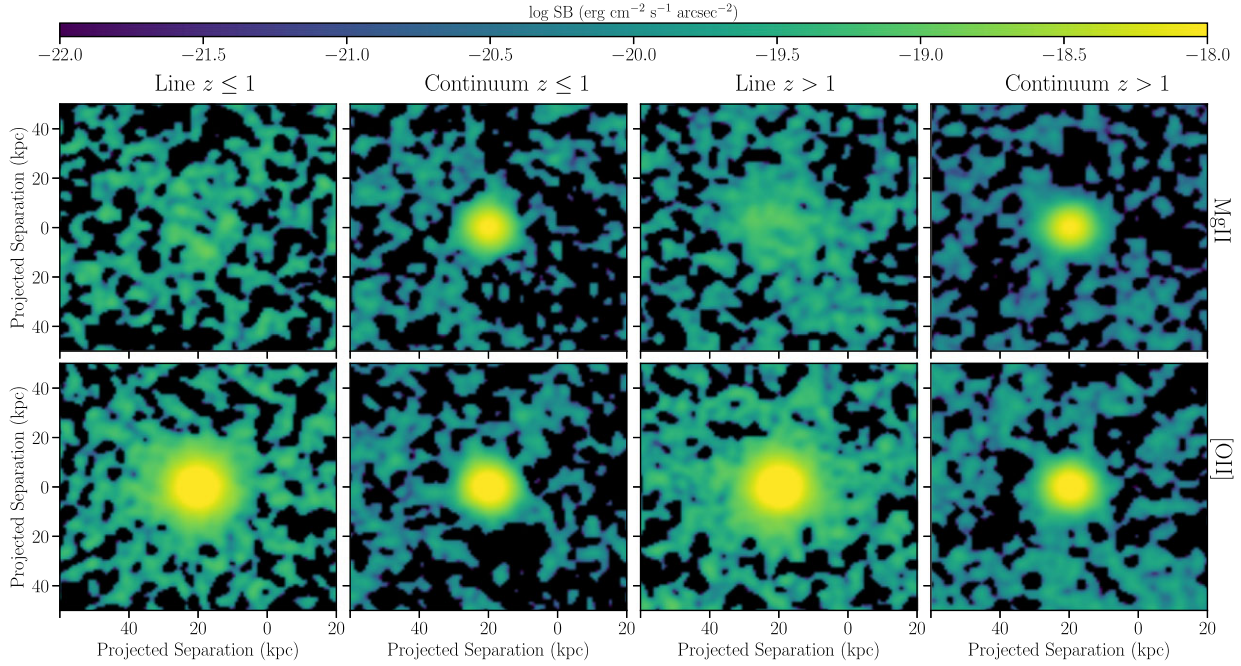


Figure 6. Median-stacked pseudo-NB images at different redshift bins. The top panels show the results for Mg II and the bottom panels show the results for [O II]. From left to right, the panels show the stacked line emission after subtracting the continuum at $z \leq 1$, the stacked continuum emission in control windows at $z \leq 1$, the stacked line emission after subtracting the continuum at $z > 1$, and the stacked continuum emission in control windows at $z > 1$.

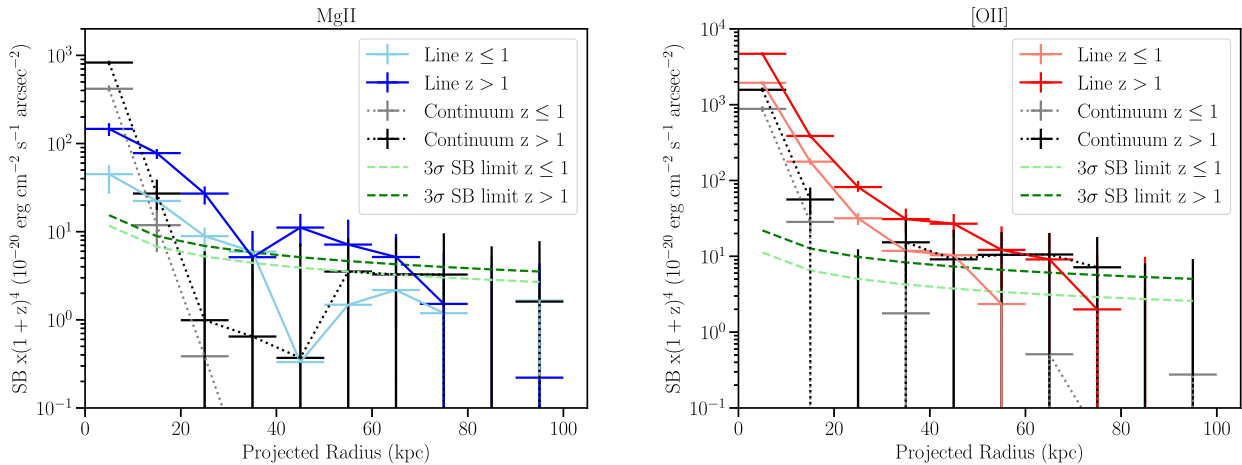


Figure 7. Left: the median-stacked azimuthally averaged radial SB profiles of Mg II emission (corrected for cosmological SB dimming) in circular annuli of 10 kpc from the galaxy centres at $z \leq 1$ and $z > 1$ are shown as light blue and dark blue solid lines, respectively. The SB profiles of the control continuum emission at $z \leq 1$ and $z > 1$ are shown as grey and black dotted lines, respectively. The 3σ SB limits for the $z \leq 1$ and $z > 1$ profiles are shown as light and dark green dashed lines, respectively. Right: same as in the left-hand plot for [O II] emission. The [O II] SB profiles at $z \leq 1$ and $z > 1$ are shown as pink and red solid lines, respectively. The error bars represent the 1σ uncertainties from bootstrapping analysis.

an evolution in the average metal line emission with redshift that is independent of stellar mass.

This evolution could arise from the higher SFR of galaxies, larger ionizing radiation, or cool gas density at higher redshifts. Indeed, the average SFR, obtained from SPS fitting (Section 2), of the $z > 1$ galaxy sample is ≈ 2.5 times larger than that of the $z \leq 1$ sample, even after matching the two samples in stellar mass. To check for the dependence of the redshift evolution on the SFR, we performed a second control analysis where we formed two samples at $z \leq 1$ and at $z > 1$ that are matched in both the stellar mass and SFR within ± 0.3 dex in the base 10 logarithm values. We thus selected

132 and 143 galaxies for Mg II and [O II], respectively, in each of the two redshift bins. The maximum differences between the cumulative distributions of the stellar mass and SFR in the two redshift bins are ≤ 0.05 and the p values are $\gtrsim 0.96$ from two-sided KS tests. We find that the difference between the metal SB in the two redshift subsamples reduces when SFR is controlled for. The cosmologically corrected metal SB profiles at $z > 1$ are on an average ≈ 1.4 times brighter than at $z \leq 1$, however they are consistent within the 1σ uncertainties. This indicates that the redshift evolution of the metal line emission could be predominantly driven by the higher SFR of galaxies at $z > 1$, although there could be intrinsic evolution or

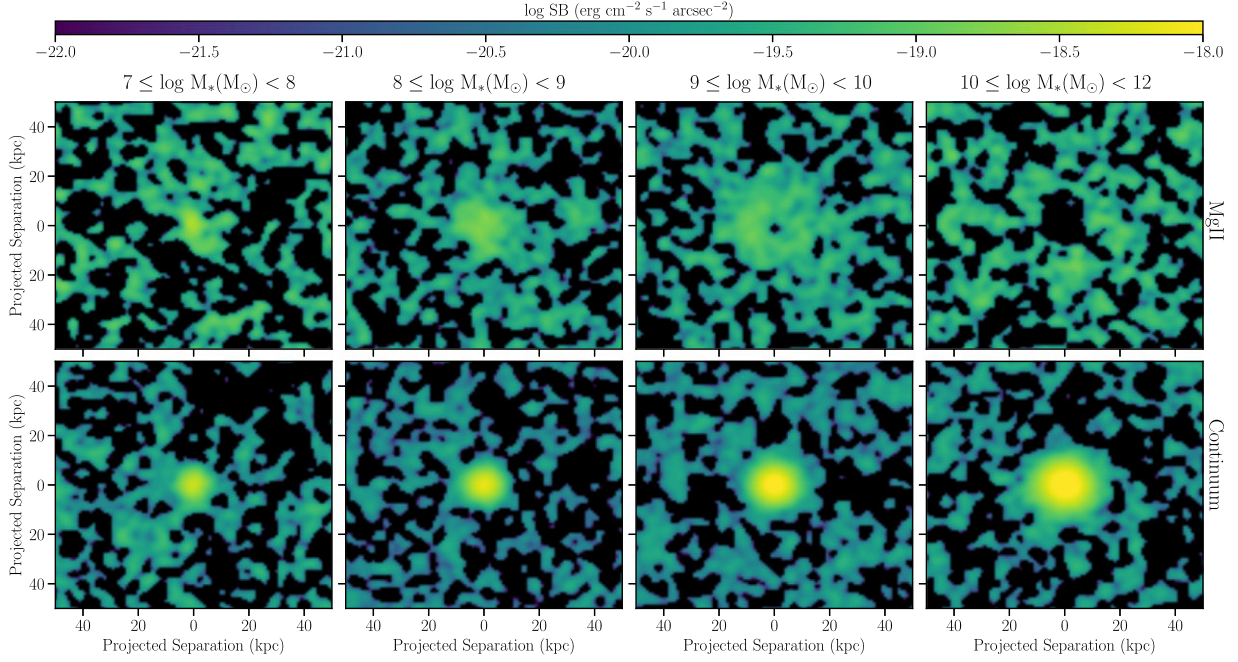


Figure 8. Median-stacked pseudo-NB images at different stellar mass bins. The top panels show the results for stacked Mg II line emission after subtracting the continuum for different stellar mass bins as marked in the panels. The bottom panels show the corresponding stacked continuum emission in control windows for the different stellar mass bins. The central region in the Mg II NB image of the highest stellar mass bin is dominated by absorption.

additional factors at play that need to be verified with a larger sample.

Zhang et al. (2016) stacked the Sloan Digital Sky Survey (SDSS) 1D spectra of background galaxies to statistically map the $H\alpha + [N II]$ emission around foreground galaxies at $z < 0.2$. They detected significant line emission out to a projected radius of 100 kpc. The mean value of the emission within 50 kpc is $(2.19 \pm 0.62) \times 10^{-20} \text{ erg s}^{-1} \text{ cm}^{-2} \text{ \AA}^{-1}$, which translates to $(3.7 \pm 1.0) \times 10^{-20} \text{ erg s}^{-1} \text{ cm}^{-2} \text{ arcsec}^{-2}$ considering their typical emission line width of 12 \AA and SDSS fibre area of 7 arcsec^2 . After correcting for the cosmological SB dimming at $z \approx 0.1$, and assuming a typical $[O II]/H\alpha$ ratio of 0.62 (not corrected for extinction) at these redshifts (Mouhcine et al. 2005), we obtain the average $[O II]$ SB of $(3.4 \pm 1.0) \times 10^{-20} \text{ erg s}^{-1} \text{ cm}^{-2} \text{ arcsec}^{-2}$. Comparing these to the cosmologically corrected average $[O II]$ SB we obtain in this work (Table 2), there is a factor of ≈ 20 increase in the SB going from $z < 0.2$ to $0.7 \leq z \leq 1.0$. However, we note that there are certain caveats to the above comparison. The low-redshift result is based on stacking of 1D spectra to statistically map the line emission, whereas this work utilizes 3D stacking to directly map the emission around galaxies. In addition to the different techniques, the sample selection differs, with the low-redshift sample comprising luminous galaxies ($10^{10-11} L_{\odot}$), and our sample comprising $M_* \approx 10^{6-12} M_{\odot}$ galaxies. The conversion of the low-redshift result from flux density to SB would be wrong if the emission is concentrated in structures smaller than the SDSS fibre size. Finally, although we adopt an average value of the $[O II]/H\alpha$ ratio, it shows a large scatter, and correlates with metallicity and ionization state (Mouhcine et al. 2005).

4.1.2 Evolution with stellar mass

To study the evolution of the metal line emission as a function of stellar mass, at first we divide the full sample into four different stellar

mass bins: $M_* = 10^{7-8} M_{\odot}$ (48 galaxies, median $M_* \approx 5 \times 10^7 M_{\odot}$, median $z \approx 0.8$), $10^{8-9} M_{\odot}$ (190 galaxies, median $M_* \approx 4 \times 10^8 M_{\odot}$, median $z \approx 1.0$), $10^{9-10} M_{\odot}$ (229 galaxies, median $M_* \approx 2 \times 10^9 M_{\odot}$, median $z \approx 1.1$), and $10^{10-12} M_{\odot}$ (131 galaxies, median $M_* \approx 2 \times 10^{10} M_{\odot}$, median $z \approx 1.0$). The pseudo-NB images of Mg II line emission obtained from median stacking the MUSE cubes in the above four stellar mass bins are shown in the top panel of Fig. 8, while those of the control continuum emission are shown in the bottom panel. Fig. 9 shows the same for $[O II]$ emission. For both Mg II and $[O II]$, the control continuum emission becomes brighter and more extended with increasing stellar mass. The line emission also becomes brighter and more extended as the stellar mass increases, however the central region is dominated by Mg II absorption in the highest stellar mass bin.

Fig. 10 shows the SB profiles in the four different stellar mass bins for Mg II (left) and $[O II]$ (right) line emission. We do not show the corresponding SB profiles for the continuum emission in these plots for clarity, however we discuss here how the SB profiles of line and continuum emission compare. For the lowest mass bin ($10^{7-8} M_{\odot}$), the Mg II SB profile is not more extended than that of the continuum emission, as can be also seen from Fig. 8. The Mg II SB profile is brighter and more extended than the continuum SB profile on average over ≈ 15 –20 and ≈ 15 –30 kpc for the mass bins 10^{8-9} and $10^{9-10} M_{\odot}$, respectively. The central region up to ≈ 15 kpc shows Mg II in absorption for the highest mass bin ($10^{10-12} M_{\odot}$). Beyond that, the Mg II SB profile is brighter than the continuum one, extending up to ≈ 40 kpc. When it comes to $[O II]$, the line SB profile is more radially extended compared to the continuum SB profile for all the mass bins, extending up to ≈ 20 –40 kpc.

Comparing the Mg II SB profiles across the different stellar mass bins, the brightest emission in the central ≈ 10 kpc region is seen for the $10^{8-9} M_{\odot}$ mass bin, although the SB profiles at the centre are consistent within the 1σ uncertainties for the three lowest stellar

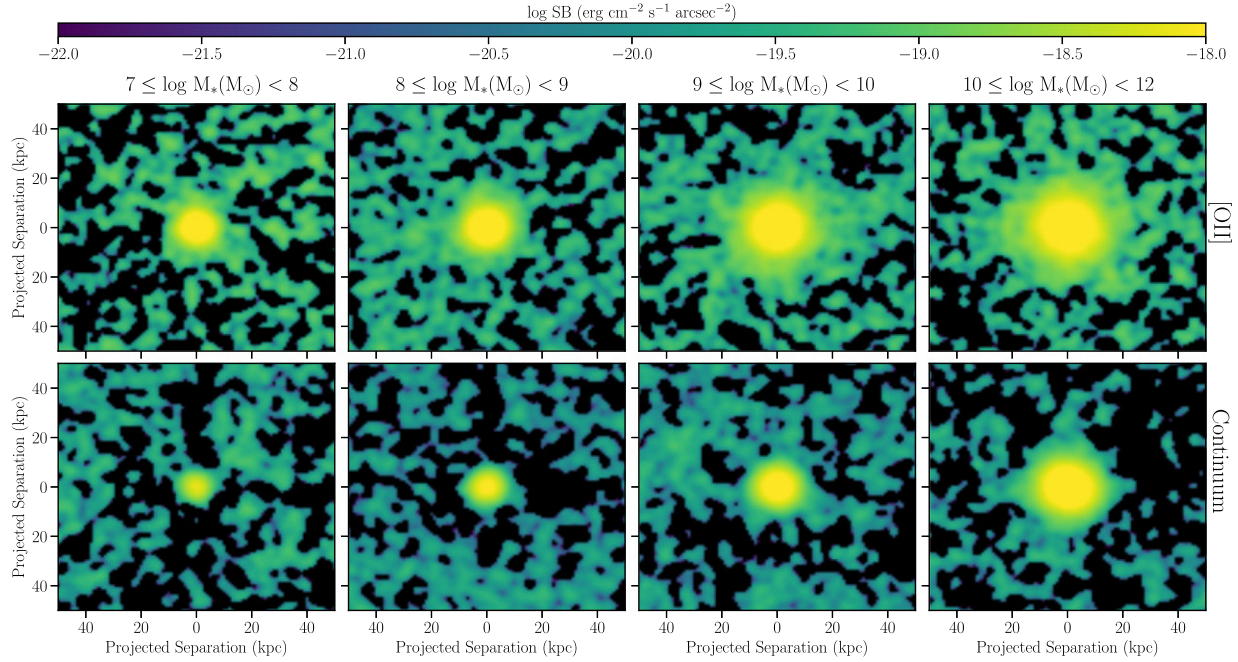


Figure 9. Same as in Fig. 8, but for [O II] emission.

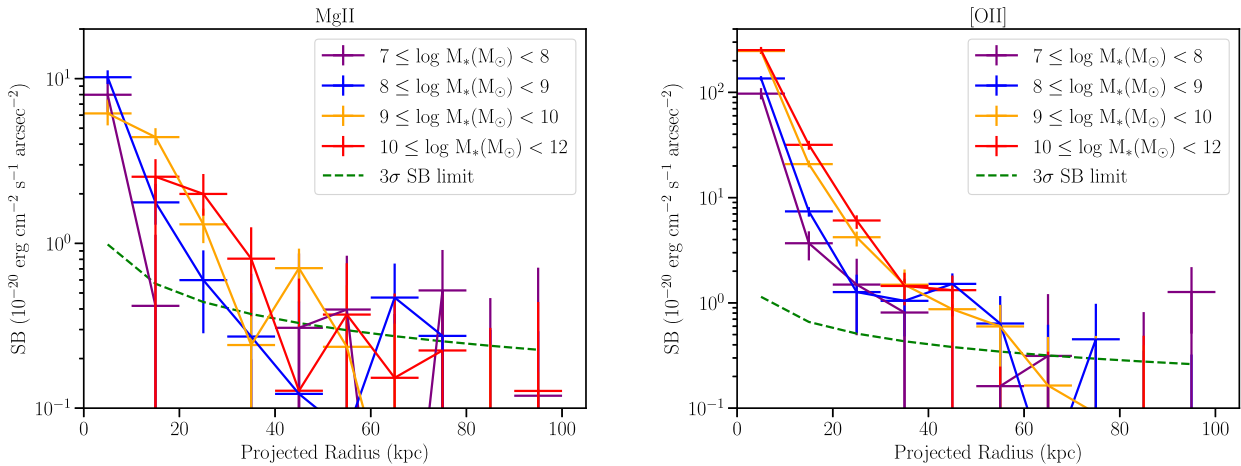


Figure 10. Left: the median-stacked azimuthally averaged radial SB profiles of Mg II emission in circular annuli of 10 kpc from the galaxy centres for different stellar mass bins are shown as marked in the figure. The error bars represent the 1σ uncertainties from bootstrapping analysis. For clarity, only the 3σ SB limit for the stellar mass bin of $\log M_*(M_\odot) = 8-9$ is shown as green dashed line. Right: same as in the left-hand plot, but for [O II] emission.

mass bins. The radial extent of the Mg II SB profiles increases by a factor of 2 from the lowest to the highest stellar mass bin. At a fixed SB level of 10^{-20} $\text{erg s}^{-1} \text{cm}^{-2} \text{arcsec}^{-2}$, the extent of the Mg II SB profile is ≈ 14 , ≈ 21 , ≈ 27 , and ≈ 33 kpc for the stellar mass bins of 10^{7-8} , 10^{8-9} , 10^{9-10} , and $10^{10-12} M_\odot$, respectively. In the case of [O II], the SB profile becomes brighter by a factor of ≈ 3 on average within a circular aperture of radius 30 kpc when going from the lowest to the highest stellar mass bin (Table 2). Similar to Mg II, the [O II] SB profile also becomes more radially extended with increasing stellar mass. At a fixed SB level of 5×10^{-20} $\text{erg s}^{-1} \text{cm}^{-2} \text{arcsec}^{-2}$, the [O II] SB profile extends up to ≈ 14 , ≈ 18 , ≈ 24 , and ≈ 27 kpc for the stellar mass bins defined above, respectively. The increase in size of the metal line emission with increasing stellar mass can also be seen from the R_{50} and R_{90} estimates in Table 1.

Next, to check that the above evolution is driven by stellar mass, independent of redshift, we conducted a control analysis similar to that in Section 4.1.1. We formed samples in three different stellar mass bins (10^{8-9} , 10^{9-10} , and $10^{10-12} M_\odot$) that are matched in redshift within ± 0.3 , such that the p -value from a two-sided KS test is $\approx 0.50-95$. The stellar mass bin of $10^{7-8} M_\odot$ does not have sufficient number of galaxies to form a matched sample. We were able to form redshift-matched samples consisting of 70 and 79 galaxies for Mg II and [O II], respectively, in each of the mass bins. Similar to the full sample, we find that the SB profiles become more radially extended as the stellar mass increases in the matched samples as well. The above exercise along with the control analysis of Section 4.1.1 suggest that the average metal line emission evolves independently with both redshift and stellar mass.

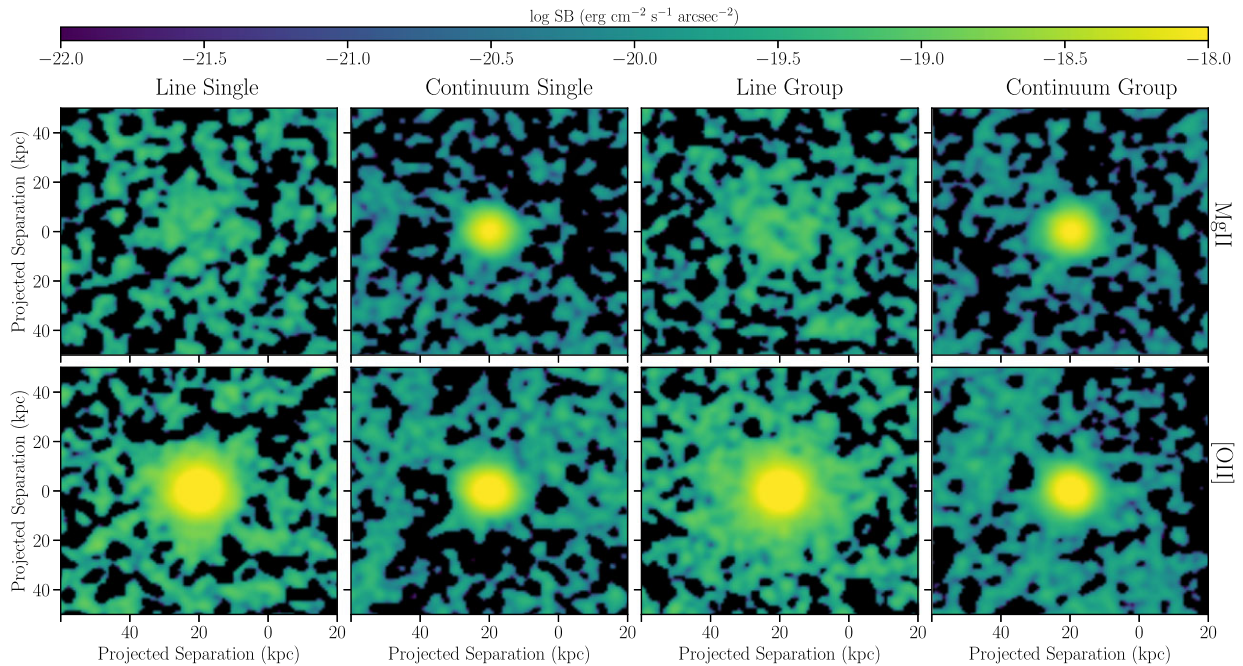


Figure 11. Median-stacked pseudo-NB images for galaxies in different environments. The top panels show the results for Mg II and the bottom panels show the results for [O II]. From left to right, the panels show the stacked line emission after subtracting the continuum for single galaxies, the stacked continuum emission in control windows for single galaxies, the stacked line emission after subtracting the continuum for group galaxies, and the stacked continuum emission in control windows for group galaxies.

4.1.3 Evolution with environment

Several studies have found dependence of the multiphase CGM gas probed in absorption on the galaxy environment (e.g. Chen et al. 2010; Bordoloi et al. 2011; Yoon & Putman 2013; Johnson, Chen & Mulchaey 2015; Burchett et al. 2016; Fossati et al. 2019b; Dutta et al. 2020, 2021; Huang et al. 2021). To characterize the emission properties as a function of galaxy environment, we classify galaxies as either single systems or as belonging to a group. We define a ‘group’ here as an association of two or more galaxies and place no constraints on the halo mass of the structure. In order to find galaxy groups, we adopt a friends-of-friends (FoF) algorithm that identifies galaxies that are connected within linking lengths of 400 kpc along the transverse physical distance, and of 400 km s⁻¹ along the line-of-sight velocity space. The algorithm and parameters used here are consistent with those generally adopted in the literature (e.g. Knobel et al. 2009, 2012; Diener et al. 2013). We find in total 108 groups (90 in MAGG and 18 in MUDF) at $0.7 \leq z \leq 1.5$ with members ranging from 2 to 20 galaxies. About half of the galaxies in the full sample are found to be part of galaxy groups, similar to other studies with similar sensitivity and group definition (e.g. Dutta et al. 2021). With the group catalogue in hand, we next formed samples of group and single galaxies that are matched in stellar mass and redshift. For each galaxy in a group, we identified a unique single galaxy within ± 0.3 dex in stellar mass and ± 0.3 in redshift. In this way, we were able to form matched samples consisting of 185 and 190 galaxies, for Mg II and [O II], respectively. Based on a two-sided KS test, the maximum difference between the cumulative distributions of the stellar mass in the group and single samples is ≈ 0.05 and the p -value is ≈ 0.94 – 0.99 , while for the redshift distributions, the maximum difference and p -values are ≈ 0.07 and ≈ 0.75 , respectively.

We stacked the MUSE cubes of the group and single matched samples separately. Fig. 11 shows the median-stacked pseudo-NB

images for the group and single samples for Mg II (top panel) and [O II] (bottom panel). While Mg II and [O II] line emission are detected for both group and single samples, the Mg II emission appears to be slightly brighter, and the [O II] emission more extended in the case of the group sample. This can be also seen from Fig. 12 that shows the azimuthally averaged SB profiles in group and single samples for Mg II (left) and [O II] (right). The Mg II and [O II] emission within a circular aperture of radius 30 kpc around the group sample are brighter by factors of ≈ 1.4 and ≈ 1.2 , respectively, compared to the single sample (Table 2). The differences in the metal line emission between the group and single samples are more prominent over ≈ 20 – 30 kpc, where the Mg II SB profile of the group sample is ≈ 2 times brighter than that of the single sample, and the [O II] SB profile of the group sample is ≈ 2.5 times brighter than that of the single sample. The group sample shows relatively larger extent in [O II] emission compared to in Mg II emission. At a SB level of 10^{-20} erg s⁻¹ cm⁻² arcsec⁻², the Mg II SB profile of the group sample has a larger radial extent by a factor ≈ 1.3 compared to that of the single sample, while the radial extent of the [O II] SB profile of the group sample is ≈ 1.6 times larger compared to that of the single sample. The R_{50} and R_{90} size estimates of Mg II emission for the group sample are slightly larger than that of the single sample, but the values are consistent within the uncertainties (see Table 1). On the other hand, the R_{90} size of the [O II] emission for the group sample is larger than that of the single sample by a factor of ≈ 1.2 .

In order to further check the dependence on environment, we performed tests wherein we selected the sample of group galaxies in different ways. In the above analysis, we have considered all the galaxies in groups. We repeated the analysis by considering only the most massive galaxies in each group (defined usually as the central galaxy; Yang, Mo & van den Bosch 2008), groups with three or more members, groups with physical separations between members

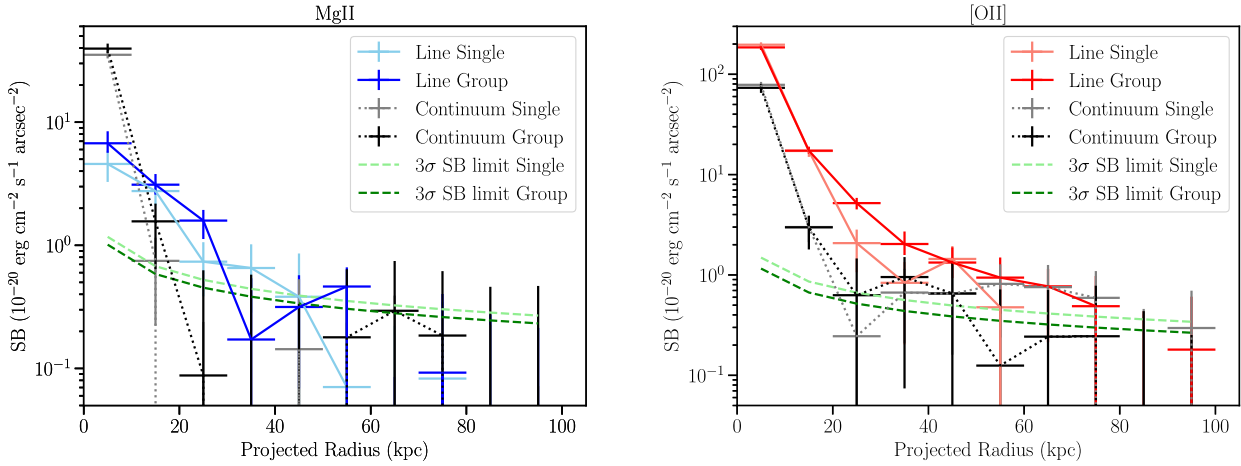


Figure 12. Left: the median-stacked azimuthally averaged radial SB profiles of Mg II emission in circular annuli of 10 kpc from the galaxy centres for single and group galaxies are shown as light blue and dark blue solid lines, respectively. The SB profiles of the control continuum emission for single and group galaxies are shown as grey and black dotted lines, respectively. The 3σ SB limits for the single and group profiles are shown as light and dark green dashed lines, respectively. Right: same as in the left-hand plot for [O II] emission. The [O II] SB profiles for single and group galaxies are shown as pink and red solid lines, respectively. The error bars represent the 1σ uncertainties from bootstrapping analysis.

<200 kpc, and groups with mass ratio between the most and the least massive members within a factor of 10. These group samples are selected in such a way that we have sufficient number of galaxies to form matched single samples for stacking as described above for the full group sample. We find that the dependence of the metal line emission on environment persists, albeit with larger uncertainties due to the smaller sample sizes, when we select the group sample via different ways. The difference is most prominent when we select groups with smaller physical separations, with the metal line emission being up to two times more radially extended compared to the single sample, indicating that environmental interactions or possible overlap from multiple haloes of group members could be a cause of the extended emission.

4.1.4 Dependence on orientation

The stacking results presented so far have been focused on the average radial extent of the metal emission and do not take into account the orientation of the galaxy discs. Several observational studies have found that the distribution of the metal-enriched halo gas, probed by Mg II absorption lines, is anisotropic, suggesting either outflowing gas along the minor axis or accreting gas along the major axis (e.g. Bordoloi et al. 2011; Kacprzak, Churchill & Nielsen 2012; Lan & Mo 2018; Schroetter et al. 2019). Cosmological hydrodynamical simulations also predict that properties of the halo gas such as metallicity and X-ray emission are anisotropic when shaped, e.g. by galactic outflows (Nelson et al. 2019b; Péroux et al. 2020; Truong et al. 2021).

We can investigate whether the average metal line emission is isotropically distributed around the disc for a subsample of galaxies in the MUDF survey that has deep (≈ 6.5 h) *HST* NIR imaging available in the F140W band (5σ limit of 28 mag). This has been used to derive morphological parameters of the galaxies using STATMORPH (Rodríguez-Gomez et al. 2019). The full description of this procedure is provided in section 6 of Revalski et al. (2023). Using the F140W image, segmentation map, and PSF model, STATMORPH has derived non-parametric and 2D Sersic fitting-based morphological measurements. There are 39 and 57 galaxies in the Mg II and [O II]

samples, respectively, with successful STATMORPH fits and inclination angle greater than 30° (such that the orientation of the major axis can be confidently estimated). The median redshift and stellar mass of these samples are $z \approx 1.1$ and $M_* \approx 2 \times 10^9 M_\odot$, respectively. We first aligned these galaxies along the direction of the major axis and then performed the stacking following the same procedure as described in Section 3. We present here the results based on the non-parametric measurements derived by STATMORPH, and note that we get similar results if instead we use the measurements derived from Sersic fitting by STATMORPH.

The results from this stacking are shown in Fig. 13. The first column shows the median-stacked pseudo-NB images of Mg II and [O II] line emission, where the galaxy major axis is aligned with the horizontal axis. We divide the region around the galaxy centre into four sections defined by cones with a 45° opening angle to the horizontal axis (marked by dashed lines in Fig. 13). We estimate the radial SB profiles separately in the left- and right-hand quadrants (marked as ‘A’) that lie along the major axis, and in the top and bottom quadrants (marked as ‘B’) that lie along the minor axis. Fig. 14 shows the radial SB profiles estimated in these two regions for Mg II (left) and [O II] (right) emission.

In the case of Mg II, we do not find any significant difference in the average emission along the major and minor axes. The [O II] emission, on the other hand, is more extended (by a factor of ≈ 1.3 at a SB level of 10^{-20} erg s^{-1} cm^{-2} arcsec^{-2}) and brighter over ≈ 30 –40 kpc along the major axis compared to along the minor axis. This extension in [O II] emission along the major axis is further confirmed when we rotate the stacked NB image by 90° and subtract it from the original. As can be seen from Fig. 13, there is excess [O II] emission in the ‘A’ quadrants along the major axis in the difference NB image. On the other hand, when we repeat the same exercise for Mg II, there is no significant residual emission, indicating a more isotropic distribution. We caution, however, that these results are based on stacking a relatively small number of galaxies, and need to be verified with a larger and deeper sample in the future. The present sample also has too few ($\lesssim 10$) face-on galaxies (inclination angle $\leq 30^\circ$) to check for dependence of the line emission on inclination.

The [O II] emission along the major axis could be tracing the extended diffuse ionized gas disc or the disc–halo interface. In the

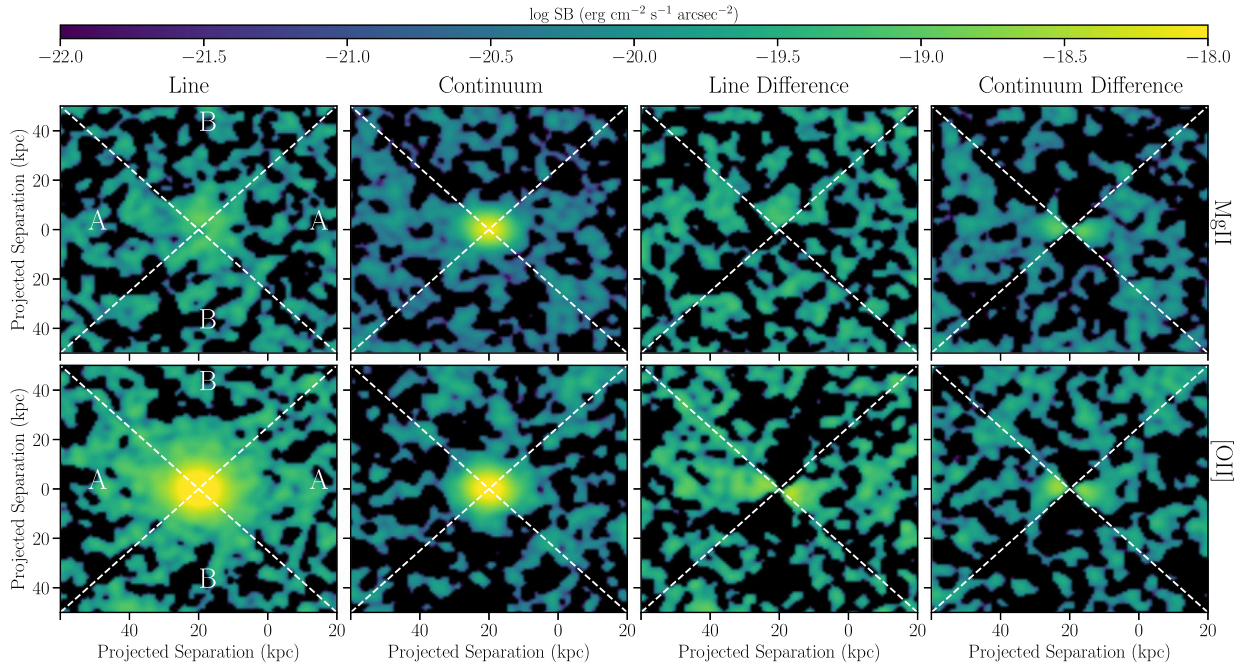


Figure 13. Median-stacked pseudo-NB images for galaxies with inclination greater than 30° in the MUDF that are aligned along the major axis. The top panels show the results for Mg II and the bottom panels show the results for [O II]. From left to right, the panels show the stacked line emission, the stacked continuum emission, the difference between the stacked line emission and the same rotated by 90° , and the difference between the stacked continuum emission and the same rotated by 90° . The regions, ‘A’ and ‘B’, in which we obtain the SB profiles are marked by dashed diagonal lines. The two regions marked ‘A’ are along the major axis (aligned with the horizontal axis), while the two regions marked ‘B’ are along the minor axis.

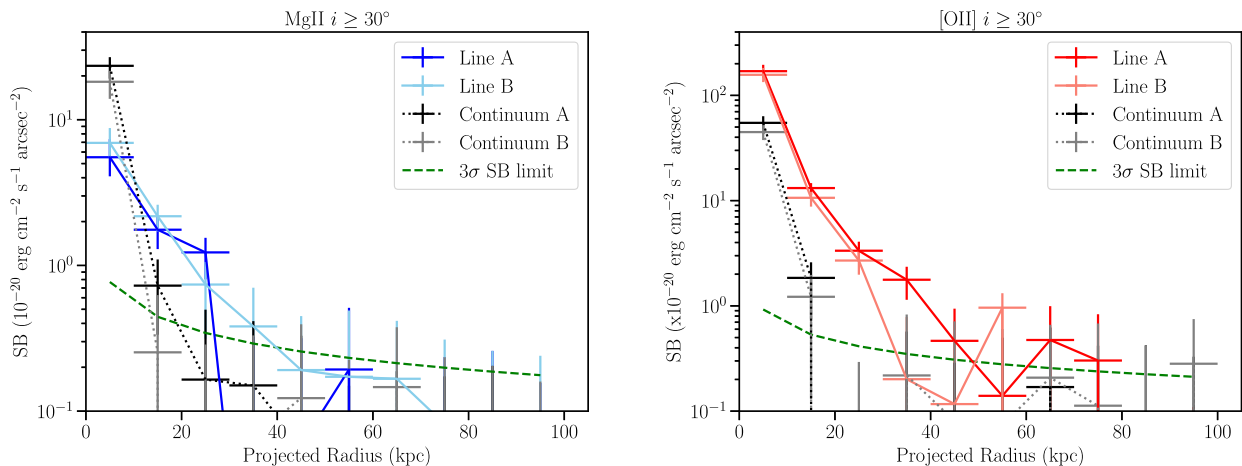


Figure 14. Left: the median-stacked radial SB profiles of Mg II emission in circular annuli of 10 kpc from the galaxy centres in the regions ‘A’ and ‘B’, as marked in Fig. 13, are shown as dark blue and light blue solid lines, respectively. The SB profiles of the corresponding control continuum emission in the regions ‘A’ and ‘B’ are shown as black and grey dotted lines, respectively. The 3σ SB limit is shown as green dashed line. Right: same as in the left-hand plot for [O II] emission. The [O II] SB profiles in the regions ‘A’ and ‘B’ are shown as red and pink solid lines, respectively. The error bars represent the 1σ uncertainties from bootstrapping analysis.

local Universe, observations of H I 21-cm emission have revealed that the neutral gas disc is typically more extended than the stellar disc of galaxies, and that it could be arising from a combination of gas accretion and recycling (e.g. Oosterloo, Fraternali & Sancisi 2007; Sancisi et al. 2008; Chemin, Carignan & Foster 2009; Kamphuis et al. 2013; Zschaechner, Rand & Walterbos 2015; Marasco et al. 2019). The extended [O II] emission could be probing the higher redshift ionized disc counterparts of these local thick H I discs.

4.2 Emission in individual groups

Group environments, where the gaseous component of galaxies is susceptible to stripping due to gravitational and hydrodynamic interactions, are regions of interest to search for extended emission around and between galaxies. Motivated by this, we have carried out a search for extended metal line emission in the richer groups in our sample (see Section 4.1.3 for group identification), defined here as those consisting of three or more galaxies. Search for extended emission in

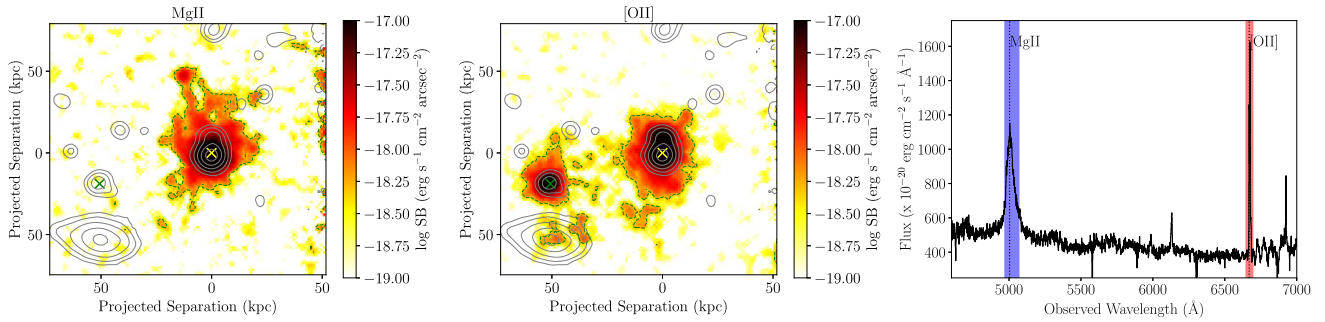


Figure 15. Left: the observed SB map of the optimally extracted Mg II emission from a galaxy at $z \approx 0.8$ in MAGG that shows quasar-like broad Mg II emission in its spectrum. The emission has been smoothed using a top-hat kernel of width 0.4 arcsec. The position of the galaxy is marked by a yellow ‘X’, while that of a nearby galaxy belonging to the same group is marked by a green ‘X’. The green contour marks the SB level of $5 \times 10^{-19} \text{ erg s}^{-1} \text{ cm}^{-2} \text{ arcsec}^{-2}$. The grey contours show the continuum emission at levels of 22, 23, 24, 25, 26, and 27 mag arcsec $^{-2}$. Centre: same as in the left-hand panel for [O II] emission. Right: the MUSE spectrum of the galaxy. The observed wavelengths of the Mg II and [O II] emission lines are marked by dotted vertical lines. The wavelength ranges around the Mg II and [O II] emission lines that are used to search for extended emission in CUBEX are marked by blue and red shaded regions, respectively.

the full galaxy sample and detailed discussion of extended emission in individual systems will be the subjects of future work. The goal of the present search is to complement the stacking analysis by checking whether we detect instances of extended intragroup medium between galaxies or extended emission around group members at the observed SB level.

For this part of the analysis, we use tools from the CUBEX package (version 1.8; Cantalupo et al. 2019; Cantalupo, in preparation). At first, we subtract the PSF of the quasar and of the stars in the field from the MUSE cubes using CUBEPSFSUB. This code takes into account the wavelength dependence of the full width at half-maximum of the seeing by generating PSF images from NB images obtained in bins of 250 MUSE spectral pixels (see Fossati et al. 2021 for further details). Then we subtract the remaining continuum sources from the cubes using CUBEBKGSUB, which is based on a fast median-filtering approach as described in Borisova et al. (2016). Afterwards, we select a subcube that covers $\pm 25 \text{ \AA}$ around the metal line at the group redshift from the PSF- and background-subtracted cube and run CUBEX on it. Before running the detection algorithm, CUBEX applies a two-pixel boxcar spatial filter on the cube.

We apply the following parameters in order to detect extended emission: (i) signal-to-noise ratio (SNR) threshold of individual voxel of 2 or 2.5 (depending on the noise in individual fields); (ii) integrated SNR threshold over the 3D mask of 5; (iii) minimum number of voxels of 5000; (iv) minimum number of spatial pixels of 100; (v) minimum number of spectral pixels of 3; and (vi) maximum number of spectral pixels of 250 (to exclude residuals from continuum sources). We experimented with different values for the detection parameters before settling on the above values that were found to lead to the most reliable extraction of extended emission with minimum number of contaminants.

CUBEX produces 3D segmentation cubes, pseudo-NB images, and 1D spectra of all the extended emission candidates. In order to verify whether the extended emission is real, we visually inspected all of the above CUBEX products to rule out cases of emission from sources at different redshifts, residual continuum emission from bright sources, noise at the edge of the field of view, and low-level widespread systematic noise. Below we discuss the results from running the above procedure on the groups in MAGG and MUDF.

4.2.1 Emission in MAGG groups

We search for extended Mg II and [O II] line emission in 34 galaxy groups in MAGG that are composed of three or more galaxies at $0.7 \leq z \leq 1.5$. The maximum number of group members in this sample is six. The typical 3σ noise in the pseudo-NB images of width $\pm 500 \text{ km s}^{-1}$ around the group redshifts is $\approx 7 \times 10^{-18} \text{ erg s}^{-1} \text{ cm}^{-2} \text{ arcsec}^{-2}$. We detect extended Mg II line emission from only one of the group galaxies, i.e. ≈ 1 per cent of the sample. This galaxy belongs to a group of three galaxies and exhibits a broad Mg II emission line at $z \approx 0.8$ in its MUSE spectrum (see right-hand panel of Fig. 15), indicating that it is likely to be a quasar. Fig. 15 shows the SB maps of the optimally extracted Mg II and [O II] emission from this galaxy. Consistently with previous studies (Borisova et al. 2016; Arrigoni Battaia et al. 2019; Fossati et al. 2021), these optimally extracted maps are obtained by collapsing the voxels in the continuum-subtracted MUSE cube within the CUBEX segmentation cube along the spectral direction and filling in the pixels outside of the segmentation cube with data from the central wavelength layer of the line emission. Both the Mg II and [O II] emission extends beyond the continuum emission from this source up to $\approx 30\text{--}40 \text{ kpc}$. Extended [O II] emission is also detected from another galaxy ($M_* \approx 5 \times 10^9 M_\odot$) at $\approx 50 \text{ kpc}$ separation that is part of the same group. The total luminosity of the Mg II emission is $\approx 10^{42} \text{ erg s}^{-1}$, and that of the [O II] emission is $\approx 7 \times 10^{41} \text{ erg s}^{-1}$.

For ≈ 32 per cent of the galaxies, we detect [O II] emission around them that extend beyond their continuum emission. Fig. 16 shows the SB maps of the optimally extracted [O II] emission from some of these galaxies that are obtained as described above. We give a flag to each case to signify how reliable the extended emission is, using 1 for higher confidence and 2 for lower confidence. In ≈ 15 per cent of the cases, due to the presence of contamination from residual continuum emission from a nearby star or quasar, or due to the source being close to the edge of the field of view, all of the emission detected by CUBEX may not be associated with the galaxy, and hence these are given a flag 2. The [O II] emission can be seen extending beyond the continuum emission from the galaxies and arising from filamentary-like structures up to 50 kpc in some cases. In ≈ 30 per cent of the cases, the emission forms a common envelope or bridge-like structure around two or more nearby galaxies. The extended [O II] emission could be arising as a result of tidal interactions between galaxies in the group environment or ram-pressure stripping by the intragroup medium. Based on the average [O II] emission around

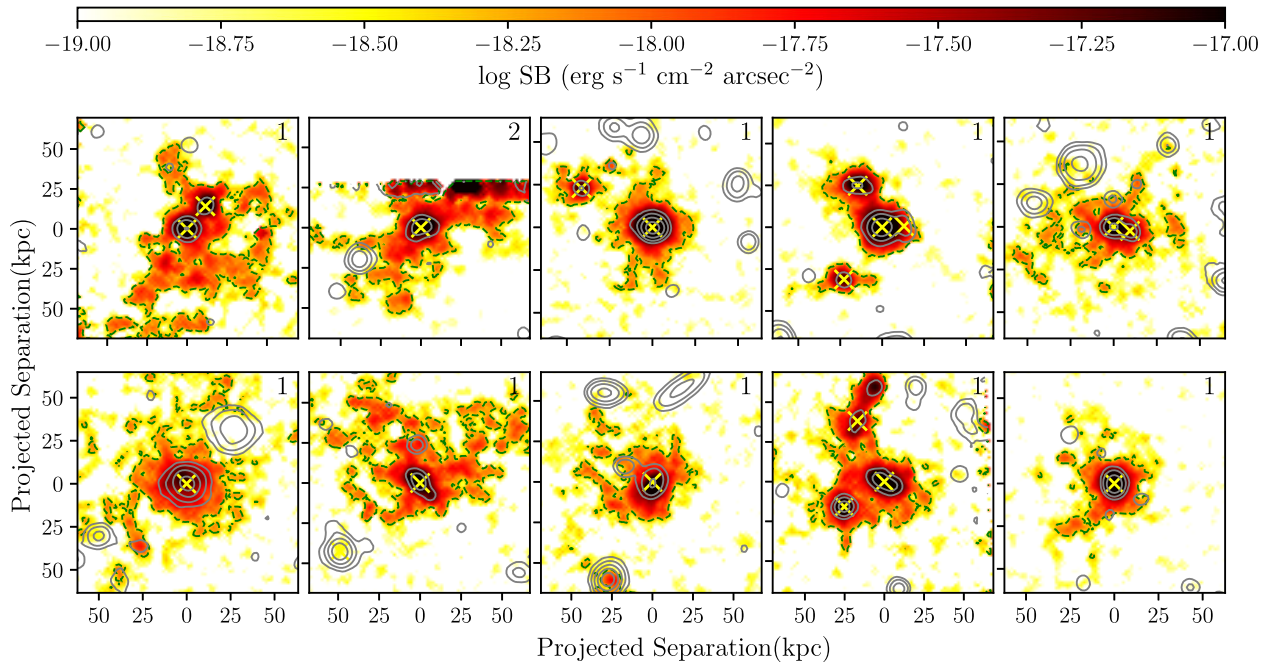


Figure 16. Observed SB maps of the optimally extracted [O II] emission around selected group galaxies in MAGG. The emission has been smoothed using a top-hat kernel of width 0.4 arcsec. The galaxy position is marked by an X. The green contour marks the SB level of $5 \times 10^{-19} \text{ erg s}^{-1} \text{ cm}^{-2} \text{ arcsec}^{-2}$. The grey contours show the continuum emission at levels of 22, 23, 24, 25, 26, and 27 mag arcsec $^{-2}$. The number in each panel indicates the confidence flag of the detection (1 = higher; 2 = lower). In one of the top panels, we show an example of a system that is given a flag 2 because it is at the edge of the field of view.

group galaxies being more extended than the average continuum emission in the stacking analysis (Section 4.1.3), such emission is likely to be present also around other group galaxies, but at a level that is below the observed SB limit.

4.2.2 Emission in MUDF groups

We search for extended Mg II and [O II] line emission in 12 galaxy groups in MUDF that comprise three or more galaxies at $0.7 \leq z \leq 1.5$. The number of galaxies in these groups range from three to 20. The MUSE exposure time varies across these galaxies (see Fig. 1), with the average 3σ noise in the pseudo-NB images of width $\pm 500 \text{ km s}^{-1}$ around the group redshifts being $\approx 2 \times 10^{-18} \text{ erg s}^{-1} \text{ cm}^{-2} \text{ arcsec}^{-2}$. Extended Mg II line emission is detected from only one galaxy in this sample (≈ 1 per cent). Based on the broad emission lines of Mg II and H α detected in the optical and NIR spectra, respectively (see top panels of Fig. 17), this source is again classified as a quasar.

This quasar is part of a group of 14 galaxies at $z \approx 1.3$. The bottom panels of Fig. 17 show the SB maps of the Mg II and [O II] emission from this source that is optimally extracted using CUBEX as described in Section 4.2.1. The total luminosity of the Mg II and [O II] emission are $\approx 5 \times 10^{42} \text{ erg s}^{-1}$ and $\approx 3 \times 10^{42} \text{ erg s}^{-1}$, respectively. The Mg II emission extends beyond the region of the continuum emission, and traces structures that extend up to $\approx 30\text{--}40$ kpc from the centre. The [O II] emission, on the other hand, is more widespread than the Mg II emission, extending particularly towards the direction of a nearby galaxy ($M_* \approx 2 \times 10^{10} M_\odot$) belonging to the same group (marked by a green ‘X’). Three additional sources, located between the quasar and this galaxy, are detected in the *HST* F140W image. These are too small and faint (F140W $\approx 24\text{--}25$ mag) to be detected separately in the MUSE continuum image, but [O II] doublet lines at

the redshift of this group are detected in the MUSE spectra of these sources. The [O II] emission, extending across ≈ 85 kpc, appears to form a bridge across these sources, and could be arising as a result of tidal interactions or intergalactic transfer between them.

We detect extended [O II] emission around ≈ 40 per cent of the group galaxies in this sample, up from ≈ 32 per cent in the shallower MAGG data. Some examples of such extended [O II] emission around the galaxies are shown in Fig. 18. The confidence flag given to these detections follows the definition in Section 4.2.1. As in the case of MAGG group galaxies, the [O II] emission around these galaxies extends in filamentary-like structures up to few 10s of kpc from the galaxy centres. In ≈ 47 per cent of the cases, [O II] emission is detected around two or more nearby galaxies such that the emission forms a bridge or common structure around these galaxies.

In one system, we detected [O II] emission from seven nearby galaxies that are part of a larger group of 20 galaxies at $z \approx 1.0$ with halo mass, $M_h \approx 10^{13} M_\odot$.² The optimally extracted [O II] emission from this subgroup is shown in Fig. 19. The [O II] emission from these galaxies forms a ring-like structure extending up to ≈ 200 kpc around one of the two $z = 3.2$ quasars in this field. The total [O II] luminosity of the structure is $\approx 2 \times 10^{42} \text{ erg s}^{-1}$. We have masked the quasar and a few bright foreground galaxies located around the group galaxies (marked by ‘X’) before searching for extended emission using CUBEX, such that the emission from the group is not contaminated by continuum subtraction residuals. It is evident that there is extended [O II] emission arising around the group galaxies and also from structures connecting them. This [O II] emission is potentially tracing an intragroup medium or displaced

²Halo mass is estimated from the stellar mass of the most massive galaxy in the group following the redshift-dependent stellar-to-halo mass relation of Moster, Naab & White (2013).

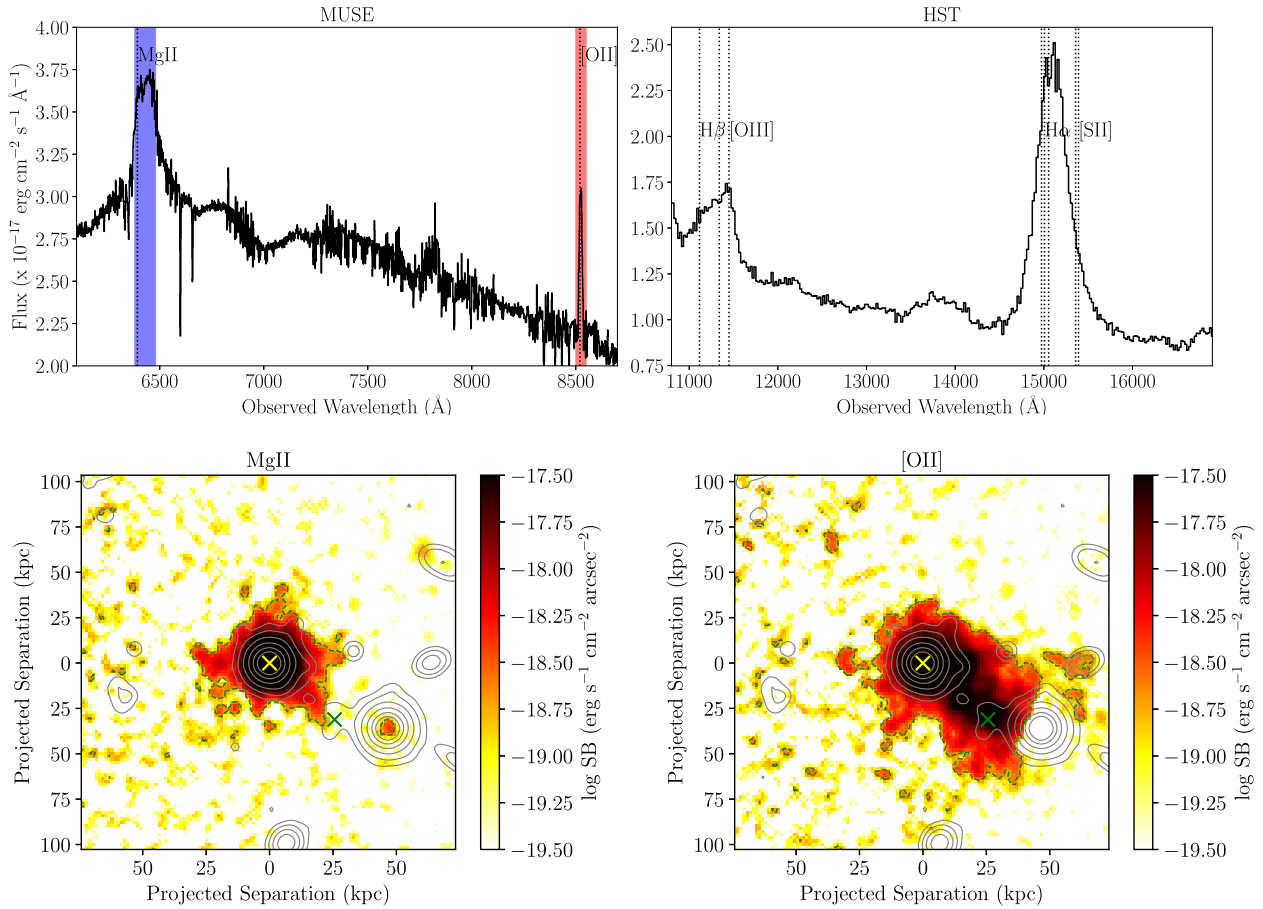


Figure 17. Top: the MUSE optical (left) and *HST* NIR (right) spectra of a galaxy at $z \approx 1.3$ in MUDF that shows quasar-like broad emission features. The observed wavelengths of the Mg II [O II], H β , [O III], [N II], H α , and [S II] emission lines are marked by dotted vertical lines. The wavelength ranges around the Mg II and [O II] emission lines that are used to search for extended emission in CUBEX are marked by blue and red shaded regions, respectively. Bottom: the observed SB maps of the optimally extracted Mg II (left) and [O II] (right) emission from the galaxy. The emission has been smoothed using a top-hat kernel of width 0.4 arcsec. The position of the galaxy is marked by a yellow ‘X’, while that of a nearby galaxy belonging to the same group is marked by a green ‘X’. The green contour marks the SB level of $2 \times 10^{-19} \text{ erg s}^{-1} \text{ cm}^{-2} \text{ arcsec}^{-2}$. The grey contours show the continuum emission at levels of 22, 23, 24, 25, 26, and 27 mag arcsec $^{-2}$.

halo gas due to gravitational or hydrodynamic interactions within the group. The deep *HST* F140W image reveals no large, extended stellar tidal streams between these galaxies. Based on the Gini- M_{20} diagram obtained using STATMORPH morphological measurements (see Section 4.1.4) and the classification scheme of Lotz et al. (2008), these galaxies would not be classified as mergers. However, a more detailed analysis of the multiwavelength data is required to understand whether tidal or ram-pressure stripping could be giving rise to the extended emission. Lastly, we note that the clumpy and filamentary nature of the extended [O II] emission points towards a patchy distribution of metals in the extended CGM or intragroup medium.

5 DISCUSSION

5.1 Comparison with literature observations

In the local Universe, there are several spatially resolved observations of extended gaseous structures around galaxies in denser environments that arise due to tidal or ram-pressure stripping. Structures such as tails or streams have been observed in emission at different

wavelengths that trace different gas phases from cold molecular and neutral gas to warm and hot ionized gas (e.g. Chung et al. 2007; Su et al. 2017; Fossati et al. 2019a; Moretti et al. 2020). Using MUSE, the GAs Stripping Phenomena in galaxies with MUSE (GASP; Poggianti et al. 2017) survey has studied in emission the long tails of ionized gas being stripped away from ‘jellyfish’ galaxies by ram pressure. Gas stripping phenomena in jellyfish galaxies have been studied in cosmological hydrodynamical simulations as well (Yun et al. 2019). The extended [O II] emission that we observe around some of the group galaxies in our sample (Section 4.2) could be higher redshift analogues of the local jellyfish galaxies. Observations of elevated covering fraction of Mg II absorption in gaseous haloes of galaxies in overdense group environments lend further support to the picture of gas stripping $z \approx 1$ (Dutta et al. 2020, 2021).

Currently, beyond the local Universe, there are only a few detections of extended metal emission, traced through rest-frame optical lines, around galaxies. Most of the extended metal nebulae detected so far are associated with overdense environments. Epinat et al. (2018) discovered a large, 10^4 kpc^2 , [O II]-emitting gas structure associated with a group of 12 galaxies at $z = 0.7$ using $\approx 10 \text{ h}$ of MUSE observations. Based on detailed studies of the ionization

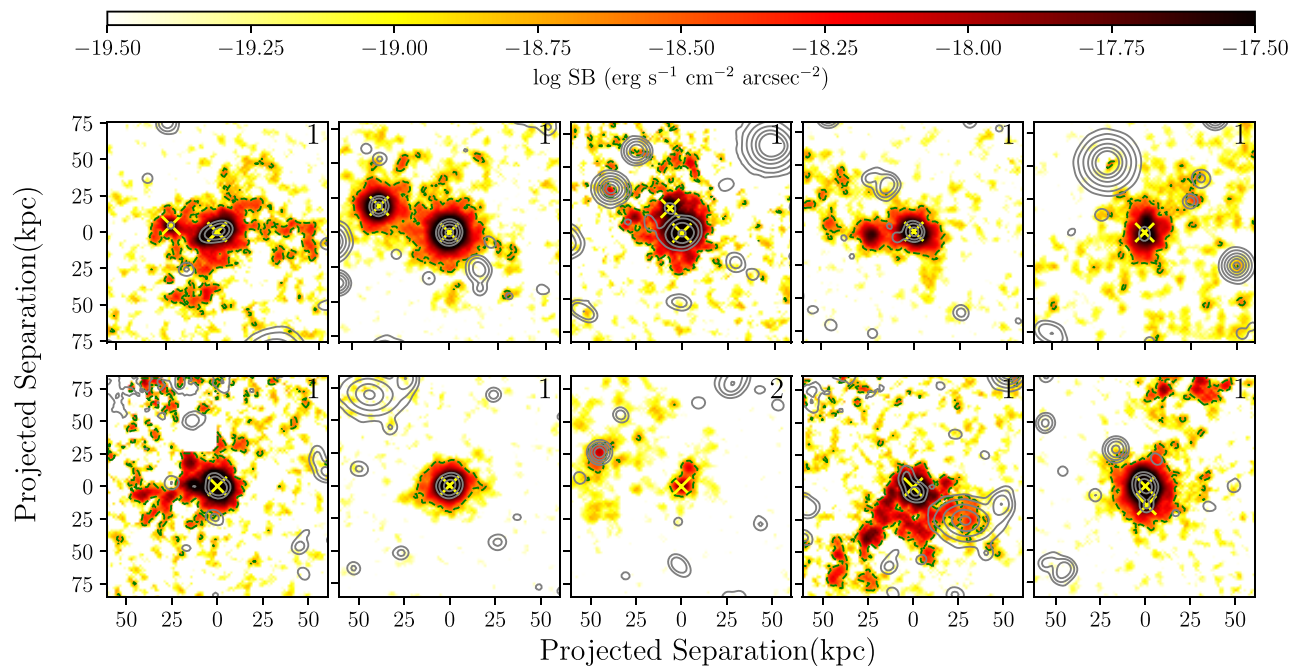


Figure 18. Same as in Fig. 16, but for the observed SB map of the optimally extracted [O II] emission around selected group galaxies in MUDF. The emission has been smoothed using a top-hat kernel of width 0.4 arcsec. The galaxy position is marked by a ‘X’. The green contour marks the SB level of $2 \times 10^{-19} \text{ erg s}^{-1} \text{ cm}^{-2} \text{ arcsec}^{-2}$. The grey contours show the continuum emission at levels of 22, 23, 24, 25, 26, and 27 mag arcsec $^{-2}$. The number in each panel indicates the confidence flag of the detection (1 = higher; 2 = lower).

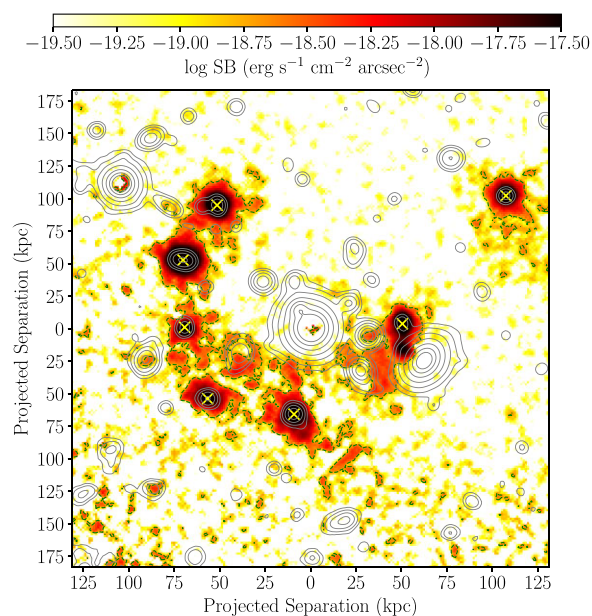


Figure 19. The observed SB map of the optimally extracted [O II] emission in a galaxy group at $z \approx 1$ in MUDF. The emission has been smoothed using a top-hat kernel of width 0.4 arcsec. The positions of the group galaxies are marked by ‘X’. The green contour marks the SB level of $2 \times 10^{-19} \text{ erg s}^{-1} \text{ cm}^{-2} \text{ arcsec}^{-2}$. The grey contours show the continuum emission at levels of 22, 23, 24, 25, 26, and 27 mag arcsec $^{-2}$.

and kinematic properties of the galaxies and extended gaseous regions, they suggested that the extended gas has been extracted from the galaxies either from tidal interactions or from active galactic nucleus (AGN) outflows induced by the interactions. Chen et al.

(2019) reported the detection of an extended (up to ≈ 100 kpc) nebula in [O II], H β , [O III], H α , and [N II] emission from a group ($M_h \approx 3 \times 10^{12} M_\odot$) of 14 galaxies at $z = 0.3$ using ≈ 2 h of MUSE observations. Combining analysis of the morphology and kinematics of the gas detected in emission and in absorption against a background quasar, the study suggested that gas stripping in low-mass galaxy groups is effective in releasing metal-enriched gas from star-forming regions.

Extended [O II] emission has been also detected in denser cluster environments. Boselli et al. (2019) detected extended (up to ≈ 100 kpc) tails of diffuse gas in [O II] emission around two massive ($M_* \approx 10^{10} M_\odot$) galaxies in a cluster ($M_h \approx 2 \times 10^{14} M_\odot$) at $z = 0.7$ using ≈ 4 h of MUSE observations. The observational evidence pointed towards the gas being removed from the galaxies during a ram-pressure stripping event. Recently, Leclercq et al. (2022) reported the first detection of extended ($\approx 1000 \text{ kpc}^2$) Mg II emission from the intragroup medium of a low-mass ($M_h \approx 5 \times 10^{11} M_\odot$), compact (≈ 50 kpc) group comprising five galaxies at $z = 1.3$ using deep (≈ 60 h) MUSE observations. The analysis of the extended Mg II, Fe II*, and [O II] emission suggests that both tidal stripping due to galaxy interactions and outflows are enriching the intragroup medium of this system.

We do not detect extended Mg II emission from the intragroup medium in the sample of groups studied in this work, despite reaching SB limits comparable to that in the study of Leclercq et al. (2022) in some of the groups detected in the MUDF. We do however detect extended [O II] emission from one of the richest groups in the MUDF (see Fig. 19). The [O II] emission is seen around and between seven galaxies that form a ring-like structure extending up to ≈ 200 kpc. The extent of the structure is comparable to what has been found in other systems discussed above. The [O II] SB level ($2\text{--}3 \times 10^{-19} \text{ erg s}^{-1} \text{ cm}^{-2} \text{ arcsec}^{-2}$) in the tails or filaments is also within a factor of few to what has been detected in similar structures

in the literature (Boselli et al. 2019; Leclercq et al. 2022). Based on visual inspection, the extended emission appears to form clumps and filamentary structures. Detailed analysis of the kinematics and physical properties of the extended gas and galaxies is required to establish whether the [O II] emission originates from gas stripping, outflows, or combination of both.

Furthermore, there have been detections of extended nebulae (≈ 10 – 120 kpc) in [O II], H β , and [O III] emission from galaxy groups hosting quasars at $z \approx 0.5$ – 1 (Johnson et al. 2018, 2022; Helton et al. 2021). These observations suggest gas stripping from the ISM of interacting galaxies, and cool, filamentary gas accretion as possible origins of the extended gaseous structures. In this work, we detect extended Mg II and [O II] emission around two active galaxies that we classify as quasars³ based on their broad emission lines (see Figs 15 and 17). While Mg II emission extending out to ≈ 30 – 40 kpc from the centre is detected only around the quasars, [O II] emission is also detected from nearby galaxies that belong to the same group in both cases. Similar to what has been found for some quasars in the above IFU studies (see also da Silva et al. 2011 for detection of a gaseous bridge between a quasar and a galaxy using long-slit spectroscopy), the extended [O II] emission possibly originates from interactions between the quasar and its companions. Alternatively, the extended emission could be tracing outflows from the quasar as found in spatially resolved observations of some low-redshift AGNs (e.g. Smethurst et al. 2021).

Next, extended metal line haloes have been detected around individual galaxies in the literature. Rupke et al. (2019) discovered a large ($\approx 80 \times 100$ kpc²) [O II] nebula around a massive ($M_* \approx 10^{11} M_\odot$), starburst (SFR ≈ 100 – $200 M_\odot \text{ yr}^{-1}$) galaxy at $z \approx 0.5$ using KCWI. Mg II emission is also detected on smaller scales up to ≈ 20 kpc around this galaxy. The study suggests that the extended emission is tracing a bipolar multiphase outflow that is probably driven by bursts of star formation. In addition, Mg II emission extending out to ≈ 25 – 37 kpc has been detected around two massive ($M_* \approx 10^{10} M_\odot$), star-forming (SFR ≈ 20 – $50 M_\odot \text{ yr}^{-1}$) galaxies at $z \approx 0.7$ using KCWI (Burchett et al. 2021) and MUSE (Zabl et al. 2021). While Burchett et al. (2021) found that the extended emission is most consistent with an isotropic outflow, Zabl et al. (2021) found that a biconical outflow can explain the observed emission. Further, Zabl et al. (2021) suggested that shocks due to the outflow can power the extended Mg II and [O II] emission in that system. Recently, Shaban et al. (2022) reported the highest redshift ($z \approx 1.7$) detection of extended (≈ 30 kpc) Mg II emission from a gravitationally lensed galaxy using ≈ 3 h of MUSE observations. The Mg II and Fe II* emission from this galaxy are more extended than the stellar continuum and [O II] emission, and are probably tracing a clumpy and asymmetric outflow. We note that although all the above observations of extended metal emission are consistent with galactic outflows, there could also be contribution from interactions with nearby, less massive companion galaxies, as detected in the system studied by Zabl et al. (2021).

In this work, we have searched for extended Mg II and [O II] emission around a selection of galaxies in group environments in MAGG and MUDF using CUBEX. While we detect extended Mg II emission only around two active galaxies as discussed above, we do detect extended (≈ 10 – 50 kpc) [O II] emission around some of the normal group galaxies (see Figs 16 and 18). However, the prevalence of such extended emission is moderate (≈ 30 – 40 per cent) at the

SB limits we typically reach ($\approx 10^{-18}$ – 10^{-19} erg s⁻¹ cm⁻² arcsec⁻²). The galaxies from which extended metal line emission have been detected in the literature, as discussed above, are predominantly starburst and/or merging systems, and are thus not characteristic of the general star-forming population. The average emission from a blind galaxy sample should be much dimmer than that obtained from targeting known bright sources. Indeed, the average metal emission SB obtained from stacking all the galaxies in our sample (Fig. 4) is fainter by one to two orders of magnitudes (after correcting for cosmological dimming) compared to the detections in the literature (e.g. Rupke et al. 2019; Burchett et al. 2021; Zabl et al. 2021). The sample used for stacking in this work is based on blind galaxy surveys, with a possible bias against passive galaxies since we select galaxies that have secure redshifts over $0.7 \leq z \leq 1.5$ based mostly on [O II] emission. Nevertheless, the sample used for stacking should be representative of the star-forming galaxy population, and the average metal SB profiles obtained here are expected to reflect the typical metal haloes around star-forming galaxies at these redshifts.

5.2 Comparison with simulations

On the theoretical front, there have been several works on predictions of emission from gas around galaxies, focusing on different X-ray, ultraviolet (UV), optical, and infrared lines, using cosmological simulations (e.g. Bertone & Schaye 2012; Frank et al. 2012; van de Voort & Schaye 2013; Corlies & Schiminovich 2016; Sravan et al. 2016; Lokhorst et al. 2019), zoom-in simulations (e.g. Augustin et al. 2019; Péroux et al. 2019; Corlies et al. 2020), radiation-hydrodynamical simulations (e.g. Katz et al. 2019; Byrohl et al. 2021; Mitchell et al. 2021), and analytical models (e.g. Faerman, Sternberg & McKee 2020; Piacitelli et al. 2022). Recently, Nelson et al. (2021) explored the Mg II emission from haloes around a statistical sample of thousands of galaxies with stellar mass in the range $\log(M_*/M_\odot) = 7.5$ – 11.0 over the redshift range $0.3 < z < 2$, using the TNG50 cosmological magnetohydrodynamical simulation (Nelson et al. 2019a,b; Pillepich et al. 2019) from the IllustrisTNG project. This study developed a relatively simple model for Mg II emission by post-processing the TNG50 simulation. In brief, the line emissivity was first computed using CLOUDY (Ferland et al. 2017). This emissivity, along with the Mg gas-phase abundance from the TNG simulation, was used to estimate the line luminosity, after taking into account the effect of depletion on to dust grains using the observed dependence of the dust-to-metal ratio on metallicity (Péroux & Howk 2020). The medium was assumed to be optically thin, i.e. all radiative transfer effects including resonant scattering were neglected, as were interactions between Mg II photons and dust, including absorption. We compare here the results from our stacking analysis to the predictions by this study. We note that the Mg II emission results from the simulation are based on the combination of both the Mg II doublet lines, same as in this work, and take into account convolution by a Gaussian PSF with a full width at half-maximum of 0.7 arcsec, comparable to that of the MUSE data.

In Fig. 20, we show the Mg II radial SB profiles from both the mean and median stacks of galaxies in three different stellar mass bins over $0.7 \leq z \leq 1.5$ (see Section 4.1.2). For comparison, we show the mean- and median-stacked radial SB profiles of Mg II emission in three different stellar mass bins (with median stellar masses similar to that of the observed stacks) at $z = 1.0$ from the TNG50 simulation. This figure displays an overall good agreement between the signal detected through stacking and that predicted from the simulation, albeit with some differences. First, we note that the

³We have checked that including the quasars in the stacking analysis in Section 4.1 does not have any effects on the results.

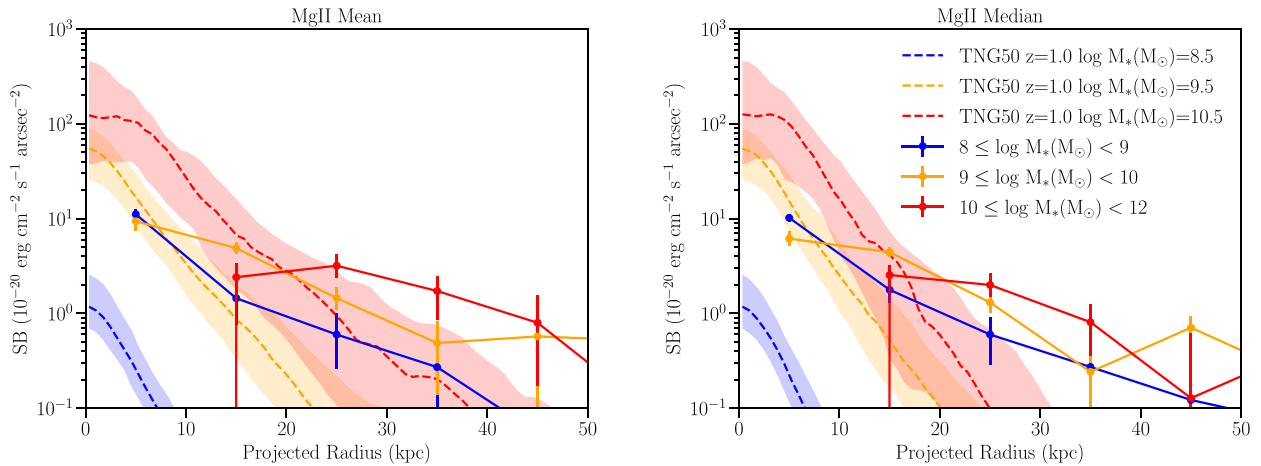


Figure 20. Left: the mean-stacked azimuthally averaged radial SB profiles of Mg II emission in circular annuli of 10 kpc from the galaxy centres for different stellar mass bins are shown in solid lines as marked in the legend in the right-hand panel. The error bars represent the 1σ uncertainties from bootstrapping analysis. The Mg II SB profiles from the TNG50 simulation (Nelson et al. 2021) at comparable redshift and stellar masses are shown in dashed lines. The shaded regions represent the 1σ halo-to-halo variation. Right: the same as in the left-hand panel, but for the median-stacked profiles.

strong increase of the central SB with stellar mass found in the simulation is not reflected in the observed central SB. For the highest stellar mass range, $M_* = 10^{10-12} M_\odot$, Mg II is observed in absorption in the central 10 kpc region. The observed and simulated central SB values are comparable for stellar mass $M_* \approx 10^{9-10} M_\odot$. For lower stellar masses, the simulated SB values are much lower than the observed ones. Secondly, we note that the observed SB profiles are generally flatter than the simulated profiles across stellar masses. The discrepancies between the observed and simulated SB profiles likely arise due to the simplifying assumptions that have gone into the Mg II emission model. These are described in detail in section 2.3 of Nelson et al. (2021) and we discuss some of them here briefly.

First, due to the inability of the TNG50 simulation to resolve physical mechanisms at small scales ($\lesssim 100$ pc) in the ISM, emission from highly ionized H II regions around young stars is neglected. The Mg II emission from the ISM could be non-negligible, particularly in lower mass galaxies with larger young stellar population, and could propagate and scatter into the CGM. This could explain the brighter and more extended Mg II SB profile observed around lower mass ($M_* < 10^9 M_\odot$) galaxies compared to that in the simulation. Secondly, the model assumes that the Mg II emission is optically thin and neglects the impact of resonant scattering. Resonant scattering is expected to redistribute the emergent Mg II emission from smaller to larger radii and thereby to flatten the radial SB profiles (Prochaska et al. 2011b; Byrohl et al. 2021; Mitchell et al. 2021). This could explain why the observed SB profiles are flatter than the simulated ones. Additionally, the model does not take into account the stellar continuum at the Mg II wavelength, which if scattered could lead to flattening of the SB profiles, and dust, which could be an additional source of opacity for photons. Indeed, in the case of Ly α emission, it is found that dust significantly suppresses the flux and that the dust attenuation of the central SB strongly scales with stellar mass (e.g. fig. A5 of Byrohl et al. 2021). This along with the lack of Mg II absorption from the ISM in the models could explain the difference in the central SB between observations and simulations for the most massive galaxies ($M_* \geq 10^{10} M_\odot$).

Overall, the above comparison indicates significant uncertainties in predicting Mg II observations, and motivates the need for better modelling of the ISM physics and radiative transfer effects, also

including a more rigorous dust treatment. Future work will extend the Monte Carlo radiative transfer technique of Byrohl et al. (2021) to the problem of Mg II resonant scattering, including empirically calibrated dust models (Byrohl et al., in preparation). Simultaneously, all cosmological hydrodynamical simulations have limited spatial resolution, which could impact the size and abundance of cool gas clouds that are resolved in the halo (Peeples et al. 2019; Suresh et al. 2019). We also note that the underlying TNG (The Next Generation) galaxy formation model yields specific predictions for the abundance, physical properties, and thus emissivity of halo gas (Truong et al. 2020; Pillepich et al. 2021; Ramesh, Nelson & Pillepich 2023), and other galaxy formation models will produce different results (Fielding et al. 2020; Ayromlou, Nelson & Pillepich 2022; Sorini et al. 2022). Thus, the comparison presented here offers a first analysis, but not a complete one, in comparing metal emission around galaxies in simulations and observations.

From the observational perspective, we note that, as mentioned previously, there maybe a bias against passive galaxies in the sample used for stacking in this work, and the sample is more representative of the star-forming galaxy population. The simulation results, on the other hand, are based on all galaxies and are not restricted to only star-forming galaxies. The highest mass bins in the simulation are dominated by more passive galaxies, which combined with the specific SFR showing a positive correlation with the Mg II halo extent in the simulation (see fig. 8 of Nelson et al. 2021), could lead to a smaller Mg II halo extent than in the observations. Next, the observed stacks are obtained in a line-of-sight velocity window and could be affected by projection effects, whereas the simulation results are based on gas that is gravitationally bound to the central halo. In the future, after the Mg II scattering problem is addressed with the methodology of Byrohl et al. (2021), we would be able to obtain spatially resolved spectra from the TNG50 simulation, and more faithfully reproduce the observations using the same velocity integration window. Finally, Mg II, being a resonant line, can be detected in emission and in absorption against the background stellar continuum, with part of the absorption infilled by redshifted emission (i.e. P Cygni-like profiles; see e.g. Prochaska et al. 2011b; Erb et al. 2012; Martin et al. 2012). We have not attempted to decompose the Mg II emission and absorption from the ISM in this work, which

would mainly affect the central SB, but this could be explored in the future. All of the above factors, along with the modelling uncertainties, contribute to the differences we find between the observed and simulated Mg II SB profiles.

Although the observed and simulated Mg II SB profiles in different stellar mass bins do not match quantitatively, there are some trends that are qualitatively similar in the observational and simulation results. The size or extent at a fixed SB level of the Mg II haloes increases with stellar mass in both the observations and simulation. The extent of the Mg II emission also correlates with the environment in both cases. The observed Mg II SB profile is more extended around group galaxies, whereas the half-light radii of the simulated Mg II haloes increases with the local galaxy overdensity due to contributions from nearby satellites.

5.3 Physical implications of stacked line emission

There are several physical mechanisms that could explain the extended Mg II and [O II] emission detected around the galaxies through the stacked analysis. One possible scenario is that the ionizing photons (ionization potentials of Mg II and [O II] are 15 and 13.6 eV, respectively) escape from the stellar discs of the galaxies, likely via outflows as indicated by the P Cygni-like Mg II profile in the central region, and ionize the cool gas in the haloes (e.g. Chisholm et al. 2020). Another possibility is that the UV background and/or low levels of star formation in the extended disc or disc–halo interface acts as a local source of ionizing radiation. The presence of more extended [O II] emission along the disc of the galaxy (Section 4.1.4) could support this scenario, since it would be less likely for ionizing photons produced in the inner part of the galaxy to escape along the disc. Lastly, gravitational interactions or galactic outflows could lead to shocks, which in turn could produce the required ionizing photons (e.g. Heckman, Armus & Miley 1990; Pedrini et al. 2022). It is likely that a combination of the different mechanisms contributes to the average extended emission. Observations of additional emission lines (e.g. [O III], H α , and [N II]) are required to distinguish between the different mechanisms.

Constraints on the physical mechanisms and gas conditions can also be obtained by comparing the average Mg II- and [O II]-emitting halo gas. The [O II] emission is brighter than the Mg II emission, as also found in observations of individual galaxies in the literature (e.g. Rubin et al. 2011; Feltre et al. 2018; Leclercq et al. 2022). Based on observations of star-forming galaxies at $z = 0.7\text{--}2.4$ and predictions from photoionization models of Gutkin, Charlot & Bruzual (2016), Feltre et al. (2018) found that the [O II] to Mg II emission line ratio increases with metallicity and varies between ≈ 3 and ≈ 40 . As can be seen from Fig. 21, the [O II] to Mg II SB ratio from the stack of the full sample is a factor of ≈ 40 in the central 10 kpc, decreases with increasing distance from the centre and remains constant around ≈ 3 over 20–50 kpc, before tentatively declining further out. This constant ratio could indicate that the Mg II emission in the inner region of the halo does not originate solely from scattering of ionizing photons produced in the stellar disc, but could have a non-negligible *in situ* component through collisional ionization similar to the [O II] emission. The resulting Mg II photons can subsequently undergo scattering in the outer halo, leading to a flatter SB profile.

Indeed, as noted in Section 4.1, it can be seen from Fig. 21 that the Mg II SB profile is shallower than the [O II] SB profile on average. This suggests that the resonant Mg II emission is more likely to be affected by dust and radiative transfer effects compared to the non-resonant, collisionally excited [O II] emission, leading to the observed flattening. Studies of individual systems with coverage of both the

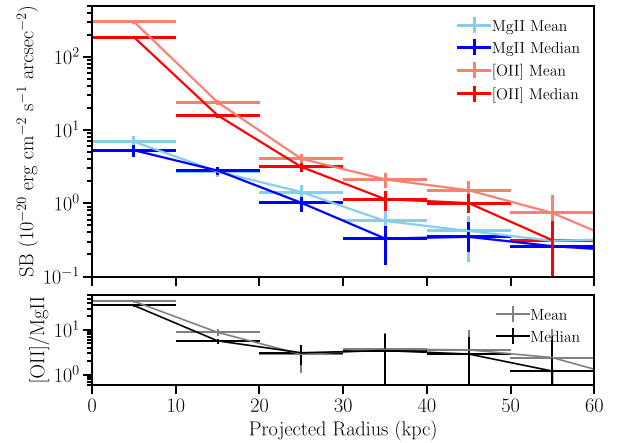


Figure 21. The top panel compares the Mg II and the [O II] SB profiles. The mean- and median-stacked azimuthally averaged radial SB profiles of Mg II emission in circular annuli of 10 kpc from the galaxy centres for the full sample are shown in light blue and dark blue, respectively. Similarly, the mean- and median-stacked SB profiles of [O II] emission are shown in pink and red, respectively. The error bars represent the 1σ uncertainties from bootstrapping analysis. The bottom panel shows the ratio of the SB of [O II] to Mg II, in grey for the mean profiles and in black for the median profiles.

lines in the literature have also found that the Mg II SB profiles are flatter than the [O II] ones (Zabl et al. 2021; Leclercq et al. 2022). Currently, there are no studies that have compared the Mg II and [O II] halo emission around galaxies in cosmological simulations. Such a comparison would place useful constraints on the possible physical mechanisms leading to the extended Mg II and [O II] emission around galaxies.

Next, we can obtain an estimate of the electron density using the ratio of the intensities of the [O II] doublet lines, $\lambda 3729/\lambda 3727$, which varies between 0.35 in the high density limit and 1.5 in the low density limit (Osterbrock 1989). We fit the [O II] emission line extracted from the median-stacked cube of the full sample (see Fig. 2) with a double Gaussian profile (with the wavelength difference between the two Gaussian components fixed to that of the [O II] doublet). We find that the ratio of the intensity of the doublet lines is 1.3 ± 0.1 in the central 10 kpc region and marginally increases to 1.5 ± 0.4 in the outer annulus region between 30 and 40 kpc, suggesting that the density is declining with increasing distance into the halo. Following Sanders et al. (2016), we estimate that the above [O II] doublet ratios imply that the average electron density at $z \approx 1$ is $\lesssim 100 \text{ cm}^{-3}$. This is similar to what has been found for star-forming field galaxies at $z \approx 1\text{--}1.5$ (Harshan et al. 2020; Davies et al. 2021).

The intrinsic flux ratio of the Mg II emission doublet lines, $\lambda 2796/\lambda 2803$, would be 2 if the excitation is dominated by collisions, and would be ≈ 1 if the excitation is dominated by photon absorption (Sigut & Pradhan 1995; Prochaska et al. 2011b). While the stacked spectrum in the central ≈ 10 kpc region shows Mg II in both emission and absorption, the spectra in the outer region (10–30 kpc) show Mg II emission and no prominent absorption signatures (see Fig. 2), suggesting that the Mg II gas in the halo is likely to be optically thin. From double Gaussian fits (with the wavelength difference between the two Gaussian components fixed to that of the Mg II doublet) to the stacked Mg II emission lines, the flux ratio is 1.5 ± 0.1 and 1.7 ± 0.2 in the annular region between 10–20 and 20–30 kpc, respectively. The ratio being close to 2 suggests that the extended Mg II emission could indeed be produced in part through collisional excitation *in situ*. The Mg II gas in the halo could then absorb and scatter the

intrinsic light, decreasing the flux ratio from the intrinsic value of 2. Detailed kinematic modelling of the spatially resolved emission would help to test such a scenario.

Next, we discuss and compare the dependence of the metal-enriched halo gas, as probed through emission and absorption lines, on redshift, stellar mass, and environment. Both the Mg II and [O II] SB profiles are brighter and more extended at $1 < z \leq 1.5$ compared to at $0.7 \leq z \leq 1.0$. It is interesting to note that the covering fractions of the more diffuse halo gas probed using Mg II and C IV absorption within the virial radius of galaxies are found to be larger at $z > 1$ compared to at $z \leq 1$, indicating a more extended metal-enriched halo at higher redshifts (Lan 2020; Dutta et al. 2021). This dependence of the halo gas on redshift, found independently using emission and absorption probes, could be arising from the higher SFR, ionizing radiation, or cool gas density at higher redshifts. Indeed, after matching the samples in SFR, we find that the metal SB profiles in the two redshift bins become consistent within the uncertainties, indicating that this dependence could be mainly driven by the redshift evolution of SFR.

Furthermore, the extents of the Mg II and the [O II] emission evolve with stellar mass, increasing by a factor of ≈ 2 from $M_* = 10^{7-8}$ to $10^{10-12} M_\odot$ at a fixed SB limit. While the central SB of Mg II emission does not show any significant dependence on stellar mass, the central SB of [O II] emission increases by a factor of ≈ 3 going from $M_* = 10^{7-8}$ to $10^{10-12} M_\odot$. The increase in emission line extent with stellar mass is consistent with absorption line studies finding that more massive galaxies show on average larger equivalent width and covering fraction of Mg II absorbing halo gas (e.g. Rubin et al. 2018; Dutta et al. 2021). The more massive galaxies could be populating their haloes with larger amount of metals, e.g. through outflows.

Another complementary result between emission and absorption line studies is the dependence of the gas distribution on the galaxy environment. The metal line SB profiles, [O II] to a greater extent than Mg II, are brighter and more extended around group galaxies compared to around single galaxies. Consistently, overdense group environments have been shown to be associated with stronger and more prevalent Mg II absorption, on average, compared to single galaxies (e.g. Bordoloi et al. 2011; Nielsen et al. 2018; Fossati et al. 2019b; Dutta et al. 2020, 2021). These studies propose that this could be due to tidal or ram-pressure stripping, as also suggested by detections of extended [O II] emission around individual galaxies in group environments in this work.

6 SUMMARY AND CONCLUSIONS

We have presented a study of the extended metal emission around galaxies, traced by the rest-frame optical Mg II and [O II] doublet lines, using MUSE IFU data from two large, blind galaxy surveys, MAGG and MUDF. To probe the average metal line emission around galaxies, we have conducted a stacking analysis of the MUSE 3D data totalling ≈ 6000 – 7000 h of ≈ 600 galaxies over the stellar mass range of $10^{6-12} M_\odot$ and over the redshift range of $0.7 \leq z \leq 1.5$. To check whether the metal emission traces the halo, we have compared the average metal line emission with the average stellar continuum emission in control windows. We have investigated the dependence of the average Mg II and [O II] emission around galaxies on redshift, stellar mass, environment, and orientation. In addition, we have searched for extended Mg II and [O II] line emission in a sample of group galaxies using CUBEX. Finally, we have compared our results with those obtained from observations in the literature and the TNG50 simulation. Below we summarize the key results from this study.

(i) Significant Mg II and [O II] line emission is detected out to ≈ 30 and ≈ 40 kpc, respectively, from the galaxies on average in the stacked NB images and SB radial profiles. This metal emission is radially more extended than the average stellar continuum emission, which extends up to ≈ 15 kpc, and therefore it traces the metal-enriched halo gas. The [O II] emission is more centrally peaked, while the Mg II emission profile is shallower. The [O II]/Mg II SB ratio is ≈ 40 in the central region and decreases to ≈ 3 beyond 20 kpc. The total luminosity of the average Mg II and the [O II] emission at $z \approx 1$ from the halo region (≈ 15 – 30 kpc) is $\approx 6 \times 10^{39}$ erg s $^{-1}$ and $\approx 2 \times 10^{40}$ erg s $^{-1}$, respectively.

(ii) The Mg II and [O II] emission around galaxies becomes brighter and more extended at higher redshifts. In particular, the Mg II and [O II] SB profiles are intrinsically brighter by a factor of ≈ 2 – 3 and more radially extended at the observed SB limit by a factor of ≈ 1.3 at $1.0 < z \leq 1.5$ than at $0.7 < z \leq 1.0$. Our control analysis indicates that this redshift evolution in the metal emission could be related to galaxies having higher SFR at $z > 1$, which could be leading to a higher local radiation field and gas density.

(iii) The extent of the Mg II and [O II] emission around galaxies shows an increasing trend with the stellar mass of the galaxies. The SB profiles become more radially extended by a factor of ≈ 2 on going from the lowest stellar mass bin ($10^{7-8} M_\odot$) to the highest stellar mass bin ($10^{10-12} M_\odot$). The [O II] emission in the central region also becomes brighter by a factor of ≈ 3 , while the central Mg II emission does not show any strong dependence on stellar mass. The dependence of the metal emission on stellar mass could be due to the larger metal enrichment in the haloes of more massive galaxies because of stronger feedback.

(iv) The Mg II SB profile around a sample of group galaxies, identified through a FoF technique, is brighter by a factor of ≈ 1.4 on average within 30 kpc, while the [O II] SB profile is more extended by a factor of ≈ 1.6 compared to that around a sample of isolated galaxies that is matched in stellar mass and redshift. This enhancement could be due to interactions in the group environment, as also indicated by observations of extended [O II] emission around individual galaxies in groups.

(v) For a subsample of ≤ 60 galaxies at inclination $\geq 30^\circ$ in the MUDF with deep *HST* imaging and morphological parameters, the [O II] SB profile is brighter over ≈ 30 – 40 kpc and more extended by a factor of ≈ 1.3 along the major axis of the disc compared to that along the minor axis. No significant dependence on orientation is found for the Mg II emission. However, these results need to be verified using a larger galaxy sample with morphological measurements.

(vi) Extended (≈ 10 – 50 kpc) [O II] emission is detected around ≈ 32 per cent and ≈ 40 per cent of galaxies in group environments (comprising three or more galaxies) in MAGG and MUDF surveys, respectively. Further, extended [O II] emission connecting seven galaxies in a $z = 1.0$ group is detected across ≈ 200 kpc in the MUDF survey. Extended (≈ 30 – 40 kpc) Mg II emission is detected only around two active galaxies (quasars) in the sample (≈ 1 per cent). Environmental processes (tidal or ram-pressure stripping) or outflows could be responsible for the extended metal line emission detected around the galaxies in overdense group environments.

(vii) There are differences in the stacked Mg II radial SB profiles obtained from our study and those obtained using TNG50 simulations. Specifically, unlike the simulated profiles, the central SB of the observed profiles do not show a strong increasing trend with stellar mass, and the observed profiles are flatter. Two key modelling assumptions – neglecting resonant scattering and the impact of dust – likely drive these differences. However, there is an overall agreement

in trends between the observational and simulation results given the many complex physical processes at play.

This work demonstrates that we are now able to probe the CGM around normal star-forming galaxies directly in emission using the power of deep and large IFU surveys such as MAGG and MUDF. We have presented here the first characterization of the average metal-emitting halo gas around galaxies at $0.7 \leq z \leq 1.5$. The stacking results found in this work complement studies of the more diffuse metal-enriched halo gas probed in absorption around $z < 2$ galaxies (Dutta et al. 2020, 2021). A combination of these two different approaches in the future, for a general galaxy population and also for individual systems, will lead to richer constraints on galaxy formation models.

Based on the stacking analysis in this work, the average [O II] doublet ratio in the halo ($\approx 10\text{--}40$ kpc annular region) suggests average electron densities $\lesssim 100 \text{ cm}^{-3}$, while the Mg II doublet ratio and the [O II]/Mg II ratio in the halo point towards *in situ* collisional ionization, with subsequent scattering of the Mg II photons, both playing an important role in the origin of the extended emission. Detailed modelling of the spatially resolved morphokinematics of the extended metal emission is required to place more robust constraints on the potential physical mechanisms and gas conditions. Large galaxy surveys with 4-metre Multi-Object Spectrograph Telescope (4MOST; de Jong et al. 2019), Dark Energy Spectroscopic Instrument (DESI; DESI Collaboration 2016), Hobby–Eberly Telescope (HET; Gebhardt et al. 2021), Multi-Object Optical and Near-infrared Spectrograph (MOONS; Cirasuolo et al. 2014), the Prime Focus Spectrograph (PFS; Tamura et al. 2016), and the WHT Enhanced Area Velocity Explorer (WEAVE; Jin et al. 2023), deep observations of individual systems with Enhanced Resolution Imager and Spectrograph (ERIS; Davies et al. 2018), *JWST* (Gardner et al. 2006), KCWI (Morrissey et al. 2018), and MUSE (Bacon et al. 2010), and with future instruments such as Extremely Large Telescope (ELT)/High Angular Resolution Monolithic Optical and Near-infrared Integral field spectrograph (HARMONI; Thatte et al. 2021), Magellan Infrared Multi-Object Spectrograph (MIRMOS; Konidaris et al. 2020), and VLT/BlueMUSE (Richard et al. 2019), will allow us to obtain multiple diagnostics and interpret the physical mechanisms driving the extended emission.

ACKNOWLEDGEMENTS

We thank the reviewer for their helpful comments. This project has received funding from the European Research Council (ERC) under the European Union’s Horizon 2020 Framework Programme (grant agreement no. 757535) and by Fondazione Cariplo (grant no. 2018–2329). DN acknowledges funding from the Deutsche Forschungsgemeinschaft (DFG) through an Emmy Noether Research Group (grant number NE 2441/1-1). SC gratefully acknowledges support from the Swiss National Science Foundation grant PP00P2 190092 and from the ERC under the European Union’s Horizon 2020 Framework Programme (grant agreement no. 864361). PD acknowledges support from the NWO grant 016.VIDI.189.162 (‘ODIN’) and from the European Commission’s and University of Groningen’s CO-FUND Rosalind Franklin program. This work is based on observations collected at the European Organisation for Astronomical Research in the Southern Hemisphere under ESO programme IDs 197.A-0384, 065.O-0299, 067.A-0022, 068.A-0461, 068.A-0492, 068.A-0600, 068.B-0115, 069.A-0613, 071.A-0067, 071.A-0114, 073.A-0071, 073.A-0653, 073.B-0787, 074.A-0306, 075.A-0464, 077.A-0166, 080.A-0482, 083.A-0042, 091.A-0833, 092.A-0011, 093.A-

0575, 094.A-0280, 094.A-0131, 094.A-0585, 095.A-0200, 096.A-0937, 097.A-0089, 099.A-0159, 166.A-0106, 189.A-0424, 094.B-0304, 096.A-0222, 096.A-0303, 103.A-0389, and 1100.A-0528. Based on observations with the NASA/ESA *Hubble Space Telescope* obtained, from the Data Archive at the Space Telescope Science Institute, which is operated by the Association of Universities for Research in Astronomy, Incorporated, under NASA contract NAS 5–26555. Support for Program numbers 15637 and 15968 was provided through grants from the STScI under NASA contract NAS 5–26555. This work used the DiRAC Data Centric system at Durham University, operated by the Institute for Computational Cosmology on behalf of the STFC DiRAC HPC Facility (www.dirac.ac.uk). This equipment was funded by BIS National E-infrastructure capital grant ST/K00042X/1, STFC capital grants ST/H008519/1 and ST/K00087X/1, STFC DiRAC Operations grant ST/K003267/1, and Durham University. DiRAC is part of the National E-Infrastructure. This research has made use of the following PYTHON packages: NUMPY (Harris et al. 2020), SCIPY (Virtanen et al. 2020), MATPLOTLIB (Hunter 2007), and ASTROPY (Astropy Collaboration 2013).

DATA AVAILABILITY

The MUSE data used in this work are available from the European Southern Observatory archive (<https://archive.eso.org>). The MUSE ESO P3 level data of the MAGG survey are available at https://archive.eso.org/scienceportal/home?data_collection=197.A-0384&publ_date=2022-11-14. The *HST* data used in this work are available from the MAST archive (<https://mast.stsci.edu>). The IllustrisTNG simulations, including TNG50, are publicly available and accessible at www.tng-project.org/data (Nelson et al. 2019a).

REFERENCES

- Arrigoni Battaia F., Hennawi J. F., Prochaska J. X., Oñorbe J., Farina E. P., Cantalupo S., Lusso E., 2019, *MNRAS*, 482, 3162
- Astropy Collaboration, 2013, *A&A*, 558, A33
- Augustin R. et al., 2019, *MNRAS*, 489, 2417
- Augustin R., Péroux C., Hamanowicz A., Kulkarni V., Rahmani H., Zanella A., 2021, *MNRAS*, 505, 6195
- Ayromlou M., Nelson D., Pillepich A., 2022, preprint ([arXiv:2211.07659](https://arxiv.org/abs/2211.07659))
- Bacon R. et al., 2010, in McLean I. S., Ramsay S. K., Takami H., eds, Proc. SPIE Vol. 7735, Ground-based and Airborne Instrumentation for Astronomy III. SPIE, Bellingham, p. 773508
- Bacon R. et al., 2021, *A&A*, 647, A107
- Beckett A., Morris S. L., Fumagalli M., Bielby R., Tejos N., Schaye J., Jannuzi B., Cantalupo S., 2021, *MNRAS*, 506, 2574
- Berg M. A. et al., 2023, *ApJ*, 944, 101
- Bertin E., Arnouts S., 1996, *A&AS*, 117, 393
- Bertone S., Schaye J., 2012, *MNRAS*, 419, 780
- Bielby R. M. et al., 2020, *MNRAS*, 493, 5336
- Bordoloi R. et al., 2011, *ApJ*, 743, 10
- Borisova E. et al., 2016, *ApJ*, 831, 39
- Boselli A. et al., 2019, *A&A*, 631, A114
- Bowen D. V., Chelouche D., Jenkins E. B., Tripp T. M., Pettini M., York D. G., Frye B. L., 2016, *ApJ*, 826, 50
- Bruzual G., Charlot S., 2003, *MNRAS*, 344, 1000
- Burchett J. N. et al., 2016, *ApJ*, 832, 124
- Burchett J. N., Tripp T. M., Wang Q. D., Willmer C. N. A., Bowen D. V., Jenkins E. B., 2018, *MNRAS*, 475, 2067
- Burchett J. N., Rubin K. H. R., Prochaska J. X., Coil A. L., Vaught R. R., Hennawi J. F., 2021, *ApJ*, 909, 151
- Byler N., Dalcanton J. J., Conroy C., Johnson B. D., Levesque E. M., Berg D. A., 2018, *ApJ*, 863, 14

- Byrohl C. et al., 2021, *MNRAS*, 506, 5129
- Cai Z. et al., 2019, *ApJS*, 245, 23
- Calzetti D., Armus L., Bohlin R. C., Kinney A. L., Koornneef J., Storchi-Bergmann T., 2000, *ApJ*, 533, 682
- Cantalupo S., Porciani C., Lilly S. J., Miniati F., 2005, *ApJ*, 628, 61
- Cantalupo S., Arrigoni-Battaia F., Prochaska J. X., Hennawi J. F., Madau P., 2014, *Nature*, 506, 63
- Cantalupo S. et al., 2019, *MNRAS*, 483, 5188
- Chabrier G., 2003, *PASP*, 115, 763
- Chemin L., Carignan C., Foster T., 2009, *ApJ*, 705, 1395
- Chen H.-W., Helsby J. E., Gauthier J.-R., Shectman S. A., Thompson I. B., Tinker J. L., 2010, *ApJ*, 714, 1521
- Chen H.-W., Gauthier J.-R., Sharon K., Johnson S. D., Nair P., Liang C. J., 2014, *MNRAS*, 438, 1435
- Chen H.-W., Boettcher E., Johnson S. D., Zahedy F. S., Rudie G. C., Cooksey K. L., Rauch M., Mulchaey J. S., 2019, *ApJ*, 878, L33
- Chen H.-W. et al., 2020, *MNRAS*, 497, 498
- Chisholm J., Prochaska J. X., Schaerer D., Gazagnes S., Henry A., 2020, *MNRAS*, 498, 2554
- Christensen L., Jahnke K., Wisotzki L., Sánchez S. F., 2006, *A&A*, 459, 717
- Chung A., van Gorkom J. H., Kenney J. D. P., Vollmer B., 2007, *ApJ*, 659, L115
- Cirasuolo M. et al., 2014, in Ramsay S. K., McLean I. S., Takami H., eds, Proc. SPIE Vol. 9147, Ground-based and Airborne Instrumentation for Astronomy V. SPIE, Bellingham, p. 91470N
- Corlies L., Schiminovich D., 2016, *ApJ*, 827, 148
- Corlies L., Peoples M. S., Tumlinson J., O’Shea B. W., Lehner N., Howk J. C., O’Meara J. M., Smith B. D., 2020, *ApJ*, 896, 125
- da Silva R. L., Prochaska J. X., Rosario D., Tumlinson J., Tripp T. M., 2011, *ApJ*, 735, 54
- Davies R. et al., 2018, in Evans C. J., Simard L., Takami H., eds, Proc. SPIE Vol. 10702, Ground-based and Airborne Instrumentation for Astronomy VII. SPIE, Bellingham, p. 1070209
- Davies R. L. et al., 2021, *ApJ*, 909, 78
- de Jong R. S. et al., 2019, *The Messenger*, 175, 3
- DESI Collaboration, 2016, preprint (arXiv:1611.00036)
- Diener C. et al., 2013, *ApJ*, 765, 109
- Dutta R. et al., 2020, *MNRAS*, 499, 5022
- Dutta R. et al., 2021, *MNRAS*, 508, 4573
- Epinat B. et al., 2018, *A&A*, 609, A40
- Erb D. K., Quider A. M., Henry A. L., Martin C. L., 2012, *ApJ*, 759, 26
- Faerman Y., Sternberg A., McKee C. F., 2020, *ApJ*, 893, 82
- Farina E. P. et al., 2019, *ApJ*, 887, 196
- Feltre A. et al., 2018, *A&A*, 617, A62
- Ferland G. J. et al., 2017, *Rev. Mex. Astron. Astrofis.*, 53, 385
- Fielding D. B. et al., 2020, *ApJ*, 903, 32
- Fossati M. et al., 2017, *ApJ*, 835, 153
- Fossati M. et al., 2018, *A&A*, 614, A57
- Fossati M., Fumagalli M., Gavazzi G., Consolandi G., Boselli A., Yagi M., Sun M., Wilman D. J., 2019a, *MNRAS*, 484, 2212
- Fossati M. et al., 2019b, *MNRAS*, 490, 1451
- Fossati M. et al., 2021, *MNRAS*, 503, 3044
- Frank S. et al., 2012, *MNRAS*, 420, 1731
- Galbati M., Fumagalli M., Fossati M., Lofthouse E. K., Dutta R., Prochaska J. X., Murphy M. T., Cantalupo S., 2023, preprint (arXiv:2302.00021)
- Gardner J. P. et al., 2006, *Space Sci. Rev.*, 123, 485
- Gebhardt K. et al., 2021, *ApJ*, 923, 217
- Gutkin J., Charlot S., Bruzual G., 2016, *MNRAS*, 462, 1757
- Harris C. R. et al., 2020, *Nature*, 585, 357
- Harshan A. et al., 2020, *ApJ*, 892, 77
- Hayes M., Melinder J., Östlin G., Scarlata C., Lehnert M. D., Mannerström-Jansson G., 2016, *ApJ*, 828, 49
- Heckman T. M., Armus L., Miley G. K., 1990, *ApJS*, 74, 833
- Helton J. M., Johnson S. D., Greene J. E., Chen H.-W., 2021, *MNRAS*, 505, 5497
- Hennawi J. F., Prochaska J. X., Cantalupo S., Arrigoni-Battaia F., 2015, *Science*, 348, 779
- Hinton S. R., Davis T. M., Lidman C., Glazebrook K., Lewis G. F., 2016, *Astron. Comput.*, 15, 61
- Hoffmann S. L., Mack J., Avila R., Martlin C., Cohen Y., Bajaj V., 2021, Am. Astron. Soc. Meeting Abstr., #238, 216.02
- Huang Y.-H., Chen H.-W., Shectman S. A., Johnson S. D., Zahedy F. S., Helsby J. E., Gauthier J.-R., Thompson I. B., 2021, *MNRAS*, 502, 4743
- Hunter J. D., 2007, *Comput. Sci. Eng.*, 9, 90
- Jin S. et al., 2023, *MNRAS*, in press
- Johnson S. D., Chen H.-W., Mulchaey J. S., 2015, *MNRAS*, 449, 3263
- Johnson S. D. et al., 2018, *ApJ*, 869, L1
- Johnson S. D. et al., 2022, *ApJ*, 940, L40
- Kacprzak G. G., Churchill C. W., Nielsen N. M., 2012, *ApJ*, 760, L7
- Kamphuis P. et al., 2013, *MNRAS*, 434, 2069
- Katz H. et al., 2019, *MNRAS*, 487, 5902
- Knobel C. et al., 2009, *ApJ*, 697, 1842
- Knobel C. et al., 2012, *ApJ*, 753, 121
- Konidaris N. P., Rudie G. C., Newman A. B., Hare T. S., Williams J. E., Lanz A. E., Kelson D. D., Crane J., 2020, in Evans C. J., Bryant J. J., Motohara K., eds, Proc. SPIE Vol. 11447, Ground-based and Airborne Instrumentation for Astronomy VIII. SPIE, Bellingham, p. 114471E
- Kusakabe H. et al., 2022, *A&A*, 660, A44
- Lan T.-W., 2020, *ApJ*, 897, 97
- Lan T.-W., Mo H., 2018, *ApJ*, 866, 36
- Leclercq F. et al., 2017, *A&A*, 608, A8
- Leclercq F. et al., 2020, *A&A*, 635, A82
- Leclercq F. et al., 2022, *A&A*, 663, A11
- Lehner N. et al., 2020, *ApJ*, 900, 9
- Lofthouse E. K. et al., 2020, *MNRAS*, 491, 2057
- Lofthouse E. K. et al., 2023, *MNRAS*, 518, 305
- Lokhorst D., Abraham R., van Dokkum P., Wijers N., Schaye J., 2019, *ApJ*, 877, 4
- Lopez S. et al., 2018, *Nature*, 554, 493
- Lotz J. M. et al., 2008, *ApJ*, 672, 177
- Mackenzie R. et al., 2021, *MNRAS*, 502, 494
- Marasco A. et al., 2019, *A&A*, 631, A50
- Martin C. L., Scannapieco E., Ellison S. L., Hennawi J. F., Djorgovski S. G., Fournier A. P., 2010, *ApJ*, 721, 174
- Martin C. L., Shapley A. E., Coil A. L., Kornei K. A., Bundy K., Weiner B. J., Noeske K. G., Schiminovich D., 2012, *ApJ*, 760, 127
- Martin C. L., Shapley A. E., Coil A. L., Kornei K. A., Murray N., Pancoast A., 2013, *ApJ*, 770, 41
- Merlin E. et al., 2015, *A&A*, 582, A15
- Mintz A. et al., 2022, *AJ*, 164, 51
- Mitchell P. D., Blaizot J., Cadiou C., Dubois Y., Garel T., Rosdahl J., 2021, *MNRAS*, 501, 5757
- Moretti A. et al., 2020, *ApJ*, 889, 9
- Morrissey P. et al., 2018, *ApJ*, 864, 93
- Moster B. P., Naab T., White S. D. M., 2013, *MNRAS*, 428, 3121
- Mouhcine M., Lewis I., Jones B., Lamareille F., Maddox S. J., Contini T., 2005, *MNRAS*, 362, 1143
- Muzahid S. et al., 2021, *MNRAS*, 508, 5612
- Nelson D. et al., 2019a, *Comput. Astrophys. Cosmol.*, 6, 2
- Nelson D. et al., 2019b, *MNRAS*, 490, 3234
- Nelson D., Byrohl C., Peroux C., Rubin K. H. R., Burchett J. N., 2021, *MNRAS*, 507, 4445
- Nielsen N. M., Kacprzak G. G., Pointon S. K., Churchill C. W., Murphy M. T., 2018, *ApJ*, 869, 153
- Oosterloo T., Fraternali F., Sancisi R., 2007, *AJ*, 134, 1019
- Osterbrock D. E., 1989, *Astrophysics of Gaseous Nebulae and Active Galactic Nuclei*. University Science Books, Mill Valley, CA
- Pedrini A. et al., 2022, *MNRAS*, 511, 5180
- Peoples M. S. et al., 2019, *ApJ*, 873, 129
- Péroux C., Howk J. C., 2020, *ARA&A*, 58, 363
- Péroux C., Rahmani H., Arrigoni Battaia F., Augustin R., 2018, *MNRAS*, 479, L50
- Péroux C. et al., 2019, *MNRAS*, 485, 1595
- Péroux C., Nelson D., van de Voort F., Pillepich A., Marinacci F., Vogelsberger M., Hernquist L., 2020, *MNRAS*, 499, 2462

- Péroux C. et al., 2022, *MNRAS*, 516, 5618
- Piacitelli D. R., Solhaug E., Faerman Y., McQuinn M., 2022, *MNRAS*, 516, 3049
- Pillepich A. et al., 2019, *MNRAS*, 490, 3196
- Pillepich A., Nelson D., Truong N., Weinberger R., Martin-Navarro I., Springel V., Faber S. M., Hernquist L., 2021, *MNRAS*, 508, 4667
- Planck Collaboration XIII, 2016, *A&A*, 594, A13
- Poggianti B. M. et al., 2017, *ApJ*, 844, 48
- Prochaska J. X., Weiner B., Chen H. W., Cooksey K. L., Mulchaey J. S., 2011a, *ApJS*, 193, 28
- Prochaska J. X., Kasen D., Rubin K., 2011b, *ApJ*, 734, 24
- Ramesh R., Nelson D., Pillepich A., 2023, *MNRAS*, 518, 5754
- Rauch M., Sargent W. L. W., Barlow T. A., 2001, *ApJ*, 554, 823
- Revalski M. et al., 2023, *ApJS*, 265, 40
- Richard J. et al., 2019, preprint ([arXiv:1906.01657](https://arxiv.org/abs/1906.01657))
- Rickards Vaught R. J., Rubin K. H. R., Arrigoni Battaia F., Prochaska J. X., Hennawi J. F., 2019, *ApJ*, 879, 7
- Rodriguez-Gomez V. et al., 2019, *MNRAS*, 483, 4140
- Rubin K. H. R., Weiner B. J., Koo D. C., Martin C. L., Prochaska J. X., Coil A. L., Newman J. A., 2010, *ApJ*, 719, 1503
- Rubin K. H. R., Prochaska J. X., Ménard B., Murray N., Kasen D., Koo D. C., Phillips A. C., 2011, *ApJ*, 728, 55
- Rubin K. H. R., Hennawi J. F., Prochaska J. X., Simcoe R. A., Myers A., Lau M. W., 2015, *ApJ*, 808, 38
- Rubin K. H. R., Diamond-Stanic A. M., Coil A. L., Crighton N. H. M., Moustakas J., 2018, *ApJ*, 853, 95
- Rudie G. C. et al., 2012, *ApJ*, 750, 67
- Rupke D. S. N. et al., 2019, *Nature*, 574, 643
- Sancisi R., Fraternali F., Oosterloo T., van der Hulst T., 2008, *A&AR*, 15, 189
- Sanders R. L. et al., 2016, *ApJ*, 816, 23
- Sargent W. L. W., Young P. J., Boksenberg A., Tytler D., 1980, *ApJS*, 42, 41
- Schroetter I. et al., 2019, *MNRAS*, 490, 4368
- Shaban A. et al., 2022, *ApJ*, 936, 77
- Sigut T. A. A., Pradhan A. K., 1995, *J. Phys. B: At. Mol. Opt. Phys.*, 28, 4879
- Smethurst R. J. et al., 2021, *MNRAS*, 507, 3985
- Sorini D., Davé R., Cui W., Appleby S., 2022, *MNRAS*, 516, 883
- Sravan N. et al., 2016, *MNRAS*, 463, 120
- Steidel C. C., Bogosavljević M., Shapley A. E., Kollmeier J. A., Reddy N. A., Erb D. K., Pettini M., 2011, *ApJ*, 736, 160
- Su Y. et al., 2017, *ApJ*, 834, 74
- Suresh J., Nelson D., Genel S., Rubin K. H. R., Hernquist L., 2019, *MNRAS*, 483, 4040
- Tamura N. et al., 2016, in Evans C. J., Simard L., Takami H., eds, Proc. SPIE Vol. 9908, Ground-based and Airborne Instrumentation for Astronomy VI. SPIE, Bellingham, p. 99081M
- Tejos N. et al., 2021, *MNRAS*, 507, 663
- Thatte N. et al., 2021, *The Messenger*, 182, 7
- Truong N. et al., 2020, *MNRAS*, 494, 549
- Truong N., Pillepich A., Nelson D., Werner N., Hernquist L., 2021, *MNRAS*, 508, 1563
- Tumlinson J. et al., 2013, *ApJ*, 777, 59
- Tumlinson J., Peebles M. S., Werk J. K., 2017, *ARA&A*, 55, 389
- Turner M. L., Schaye J., Steidel C. C., Rudie G. C., Strom A. L., 2014, *MNRAS*, 445, 794
- Umehata H. et al., 2019, *Science*, 366, 97
- van de Voort F., Schaye J., 2013, *MNRAS*, 430, 2688
- Virtanen P. et al., 2020, *Nat. Methods*, 17, 261
- Weilbacher P., 2015, MUSE Pipeline: the First Year in Operation. Zenodo, available at: <https://doi.org/10.5281/zenodo.34658>
- Weiner B. J. et al., 2009, *ApJ*, 692, 187
- Weng S. et al., 2023, *MNRAS*, 519, 931
- Wilde M. C. et al., 2021, *ApJ*, 912, 9
- Wisotzki L. et al., 2016, *A&A*, 587, A98
- Wisotzki L. et al., 2018, *Nature*, 562, 229
- Yang X., Mo H. J., van den Bosch F. C., 2008, *ApJ*, 676, 248
- Yoon J. H., Putman M. E., 2013, *ApJ*, 772, L29
- Yun K. et al., 2019, *MNRAS*, 483, 1042
- Zabl J. et al., 2021, *MNRAS*, 507, 4294
- Zahedy F. S., Chen H.-W., Rauch M., Wilson M. L., Zabludoff A., 2016, *MNRAS*, 458, 2423
- Zhang H., Zaritsky D., Zhu G., Ménard B., Hogg D. W., 2016, *ApJ*, 833, 276
- Zheng Y., Emerick A., Putman M. E., Werk J. K., Kirby E. N., Peek J., 2020, *ApJ*, 905, 133
- Zschaechner L. K., Rand R. J., Walterbos R., 2015, *ApJ*, 799, 61

This paper has been typeset from a $\text{\TeX}/\text{\LaTeX}$ file prepared by the author.