



**HAL**  
open science

## Superfluid Helium Flow in Porous Media

Hervé Allain, Michel Quintard, Cyprien Soullaine, Marc Prat, Bertrand Baudouy, Rob van Weelderren

► **To cite this version:**

Hervé Allain, Michel Quintard, Cyprien Soullaine, Marc Prat, Bertrand Baudouy, et al.. Superfluid Helium Flow in Porous Media. 5th International Conference on Porous Media & Annual Meeting, May 2013, Prague, Czech Republic. pp.1-2. hal-04021045

**HAL Id: hal-04021045**

**<https://hal.science/hal-04021045>**

Submitted on 9 Mar 2023

**HAL** is a multi-disciplinary open access archive for the deposit and dissemination of scientific research documents, whether they are published or not. The documents may come from teaching and research institutions in France or abroad, or from public or private research centers.

L'archive ouverte pluridisciplinaire **HAL**, est destinée au dépôt et à la diffusion de documents scientifiques de niveau recherche, publiés ou non, émanant des établissements d'enseignement et de recherche français ou étrangers, des laboratoires publics ou privés.



## Open Archive Toulouse Archive Ouverte (OATAO)

OATAO is an open access repository that collects the work of Toulouse researchers and makes it freely available over the web where possible.

This is an author-deposited version published in: <http://oatao.univ-toulouse.fr/>  
Eprints ID: 9074

Official URL: [http://www.interpore.org/events?task=view\\_event&event\\_id=16](http://www.interpore.org/events?task=view_event&event_id=16)

**To cite this version:**

Allain, Hervé and Quintard, Michel and Soulaine, Cyprien and Prat, Marc and Baudouy, Bertrand and Van Weelderen, Rob *Superfluid Helium Flow in Porous Media*. (2013) In: 5th International Conference on Porous Media & Annual Meeting , 21-24 May 2013, Prague, Czech Republic.

Any correspondence concerning this service should be sent to the repository administrator:  
[staff-oatao@inp-toulouse.fr](mailto:staff-oatao@inp-toulouse.fr)

# Superfluid Helium Flow in Porous Media

H. Allain<sup>a</sup>, M. Quintard<sup>b,c</sup>, C. Soulaine<sup>b</sup>, M. Prat<sup>b,c</sup>, B. Baudouy<sup>d</sup>, R. Van Weelderena<sup>a</sup>

<sup>a</sup> CERN, TE-CRG, 1211, Geneva 23, Switzerland

<sup>b</sup> Université de Toulouse; INPT, UPS; IMFT (Institut de Mécanique des Fluides de Toulouse); Allée Camille Soula, F-31400 Toulouse, France

<sup>c</sup> CNRS; IMFT; F-31400 Toulouse, France

<sup>d</sup> CEA, IRFU, SACM, F-91191 Gif-sur-Yvette, France

---

*Keywords:* porous media, superfluid helium, averaging, experiments

---

Superfluid helium is primarily used in the field of applied superconductivity. Given the complexity of the magnet geometry and the scales involved, a real 3D simulation of heat transfer in such devices at the micro-channel scale is very difficult, even impossible. However, the repeatability or even periodicity of the structure suggests the possibility of a macro-scale description following a porous medium approach. Which macro-scale model may be used? This largely remains an open field while some answers have been proposed based on experimental or theoretical work [1,2].

While mathematical models describing the physics of superfluid helium are still under discussion, two-classes of models have been accepted as good candidates to reproduce some of the most requested features associated to the understanding of heat transfer in cryogenics situations. The first class corresponds to the so-called two-fluid models, with mass balance equations for a normal fluid and a superfluid, constituting the helium phase, coupled with the energy equation. While these models have the structure of classical two-fluid models, specificities associated to the superfluid state make the models differ significantly from their classical fluid counterparts. A Landau regime may be observed for small heat fluxes, while the two-fluid models are completed by additional non-linear terms for high fluxes in the so-called Gorter–Mellink regime. The second class can be viewed as a simple solution of the previous models and takes the form of a highly non-linear heat transfer equation [3]. Specific boundary conditions complete the analysis. In particular, the boundary conditions on an impervious and adiabatic boundary correspond to a classical no-slip condition for the normal fluid and a slip condition for the superfluid component. A typical solution of the two-fluid model in the Landau regime is shown in Figure 1. This figure represents the temperature field and velocity fields at steady-state in a tube (only half of the tube is represented) heated from the left and in contact at the right end with a bath of superfluid He at constant temperature and pressure.

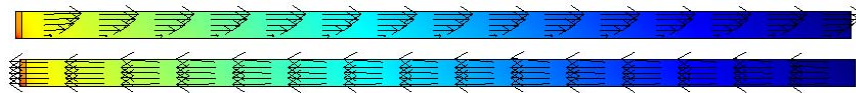


Figure 1. Temperature field, normal fluid velocity (arrows, top) and superfluid velocity (arrows, bottom)

The coupling between the two-fluid components is very strong and comes from several aspects, in particular:

1. the total mass balance involves the two components,
2. the gradient of the component pressures in the momentum balance equations are coupled through a Gibbs-Duhem equation involving the temperature gradient,
3. the Gorter-Mellink terms.

As a consequence, the upscaling problem becomes complicated. Several macro-scale models are proposed [1,2], based on a volume averaging theory and specific simplifying assumptions:

1. If the coupling through the total mass balance resolves into free-divergence flows, then the Landau model can be upscaled and leads to a macro-scale model involving a momentum balance equation of Darcy-type for the normal fluid, with the classical intrinsic permeability, and with additional terms, in particular one involving a pressure tortuosity. Experiments performed on several porous media [1], Figure 2, support this finding, for a range of temperature between 1.8 and 2.1 K, i.e., when the fraction of normal fluid is large enough. It is shown how this model can be extended to provide a macro-scale model valid in the Gorter-Mellink regime.
2. The upscaling of the non-linear diffusive model is more straightforward and has been applied successfully to model heat transfer in typical superconducting magnet structures such as the one depicted in Figure 3.

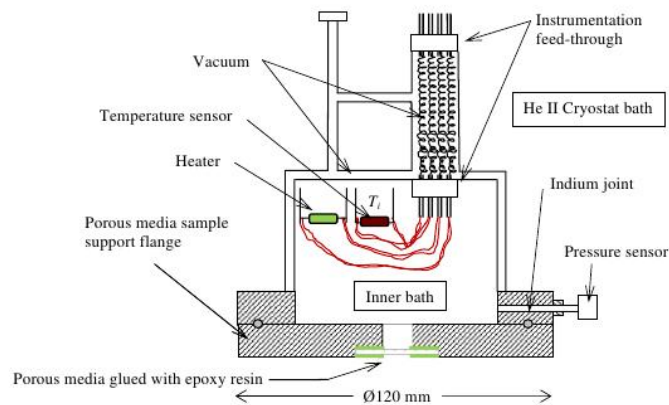


Figure 2. Experimental setup (outer bath not represented)

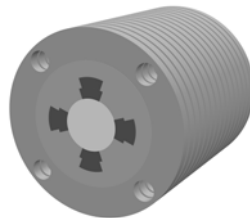


Figure 3. Sketch of a typical superconducting magnet

## References

- [1] Allain, H., Quintard, M., Prat, M. & Baudouy, B. Upscaling of superfluid helium flow in porous media *International Journal of Heat and Mass Transfer*, 2010, 53, 4852–4864.
- [2] Allain, H., Weelderren, R. V., Baudouy, B., Quintard, M., Prat, M. & Soulaire, C. Investigation of Suitability of the Method of Volume Averaging for the Study of Heat Transfer in Superconducting Accelerator Magnet Cooled by Superfluid Helium *Cryogenics*, 2013, 53, 128-134.
- [3] Snyder NS. Heat transport through helium II: Kapitza conductance. *Cryogenics* 1970:1089–95.