



HAL
open science

Guaymas Basin Tectonics and Biosphere

Andreas Teske, Daniel Lizarralde, T.W. Höfig, Ivano W. Aiello, Jeanine L. Ash, Diana P. Bojanova, Martine Buatier, Virginia Edgcomb, Christophe Y. Galerne, Swanne Gontharet, et al.

► **To cite this version:**

Andreas Teske, Daniel Lizarralde, T.W. Höfig, Ivano W. Aiello, Jeanine L. Ash, et al.. Guaymas Basin Tectonics and Biosphere. Proceedings of the International Ocean Discovery Program, 385, International Ocean Discovery Program; International Ocean Discovery Program, 2021, Proceedings of the International Ocean Discovery Program, 10.14379/iodp.proc.385.2021 . hal-04000181

HAL Id: hal-04000181

<https://hal.science/hal-04000181>

Submitted on 22 Feb 2023

HAL is a multi-disciplinary open access archive for the deposit and dissemination of scientific research documents, whether they are published or not. The documents may come from teaching and research institutions in France or abroad, or from public or private research centers.

L'archive ouverte pluridisciplinaire **HAL**, est destinée au dépôt et à la diffusion de documents scientifiques de niveau recherche, publiés ou non, émanant des établissements d'enseignement et de recherche français ou étrangers, des laboratoires publics ou privés.

Proceedings of the International Ocean Discovery Program

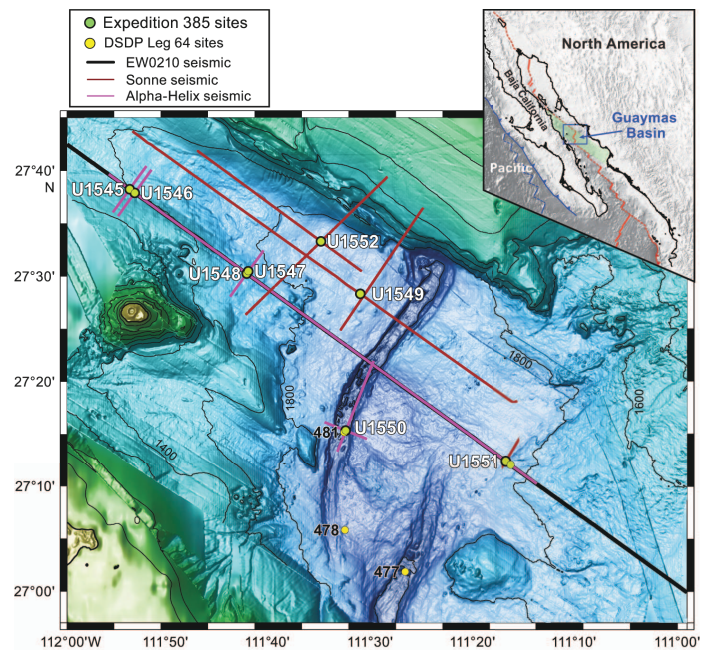
Volume 385

Guaymas Basin Tectonics and Biosphere

Expedition 385 of the R/V *JOIDES Resolution*
from and to San Diego, California (USA)
Sites U1545–U1552
15 September–15 November 2019

Volume authorship

Teske, A., Lizarralde, D., Höfig, T.W., and the Expedition 385 Scientists



Publisher's notes

This publication was prepared by the *JOIDES Resolution* Science Operator (JRSO) at Texas A&M University (TAMU) as an account of work performed under the International Ocean Discovery Program (IODP). This material is based upon work supported by the JRSO, which is a major facility funded by the National Science Foundation Cooperative Agreement Number OCE1326927. Funding for IODP is provided by the following international partners:

National Science Foundation (NSF), United States
Ministry of Education, Culture, Sports, Science and Technology (MEXT), Japan
European Consortium for Ocean Research Drilling (ECORD)
Ministry of Science and Technology (MOST), People's Republic of China
Korea Institute of Geoscience and Mineral Resources (KIGAM)
Australia-New Zealand IODP Consortium (ANZIC)
Ministry of Earth Sciences (MoES), India

The JRSO is supported by the NSF. Any opinions, findings, and conclusions or recommendations expressed in this material do not necessarily reflect the views of the NSF, the participating agencies, TAMU, or Texas A&M Research Foundation.

The bulk of the shipboard-collected core data from this expedition is accessible at <http://iodp.tamu.edu/database/index.html>. If you cannot access this site or need additional data, please contact Data Librarian, International Ocean Discovery Program *JOIDES Resolution* Science Operator, Texas A&M University, 1000 Discovery Drive, College Station TX 77845-9547, USA. Tel: (979) 845-8495; Fax: (979) 458-1617; Email: database@iodp.tamu.edu.

A complete set of the logging data collected during the expedition is available at http://mlp.ldeo.columbia.edu/logdb/scientific_ocean_drilling. If you have problems downloading the data, wish to receive additional logging data, or have questions regarding the data, please contact Database Administrator, Borehole Research Group, Lamont-Doherty Earth Observatory of Columbia University, PO Box 1000, 61 Route 9W, Palisades NY 10964, USA. Tel: (845) 365-8343; Fax: (845) 365-3182; Email: logdb@ldeo.columbia.edu.

Supplemental data were provided by the authors and may not conform to IODP publication formats.

JRSO expedition photos are the property of IODP and are public access.

Some core photographs have been tonally enhanced to better illustrate particular features of interest. High-resolution images are available upon request.

Cover photographs show (top) R/V *JOIDES Resolution* in Guaymas Basin at the Ringvent location at sunset with Isla Tortuga on the horizon and (bottom) a sill sample. Photo credit: Phil Christie (*JOIDES Resolution*), Andreas Teske (sill sample), and IODP JRSO.

Copyright

Except where otherwise noted, this work is licensed under the Creative Commons Attribution 4.0 International (CC BY 4.0) license (<https://creativecommons.org/licenses/by/4.0/>). Unrestricted use, distribution, and reproduction are permitted, provided the original author and source are credited.



Examples of how to cite this volume or part of this volume are available at <http://publications.iodp.org/proceedings/385/385title.html#bib>.

ISSN

World Wide Web: 2377-3189

ISBN

978-1-954252-77-6

Volume DOI

<https://doi.org/10.14379/iodp.proc.385.2021>

Publication date

27 September 2021

Contents

Expedition reports

Chapters

[Expedition 385 summary](#)

A. Teske et al.

[Expedition 385 methods](#)

A. Teske et al.

[Site U1545](#)

A. Teske et al.

[Site U1546](#)

A. Teske et al.

[Sites U1547 and U1548](#)

A. Teske et al.

[Site U1549](#)

A. Teske et al.

[Site U1550](#)

A. Teske et al.

[Site U1551](#)

A. Teske et al.

[Site U1552](#)

A. Teske et al.

Core descriptions

Visual core descriptions (VCDs) are presented in PDF files for each site. Smear slides and/or thin sections are presented in PDF and/or CSV files for each site and/or hole (CSV files are available in the CORES directory). The entire set of core images in PDF is available in the IMAGES directory.

[Site U1545](#)

[Visual core descriptions](#) · [Smear slides](#) · [Thin sections](#)

[Site U1546](#)

[Visual core descriptions](#) · [Smear slides](#) · [Thin sections](#)

[Site U1547](#)

[Visual core descriptions](#) · [Smear slides](#) · [Thin sections](#)

[Site U1548](#)

[Visual core descriptions](#) · [Smear slides](#) · [Thin sections](#)

[Site U1549](#)

[Visual core descriptions](#) · [Smear slides](#)

[Site U1550](#)

[Visual core descriptions](#) · [Smear slides](#) · [Thin sections](#)

[Site U1551](#)

[Visual core descriptions](#) · [Smear slides](#)

[Site U1552](#)

[Visual core descriptions](#) · [Smear slides](#)

Supplementary material

Supplementary material for the Volume 385 expedition reports includes DESClogik workbooks in Microsoft Excel format, diatom photomicrographs in PDF, and Formation MicroScanner images in PDF and GIF. A full list of directories can be found in SUPP_MAT in the volume zip folder or on the [Supplementary material for Volume 385 expedition reports](#) web page.

Expedition research results

Data reports

Titles are available in [HTML](#).

Syntheses

Titles are available in [HTML](#).

Drilling location maps

A site map showing the drilling locations for this expedition and maps showing the drilling locations of all International Ocean Discovery Program (IODP) expeditions, produced using QGIS (<http://www.qgis.org>), and all Integrated Ocean Drilling Program, Ocean Drilling Program (ODP), and Deep Sea Drilling Project (DSDP) expeditions, produced using Generic Mapping Tools (GMT) of Paul Wessel and Walter H.F. Smith (<https://www.generic-mapping-tools.org>), are available in PDF.

[IODP Expedition 385 site map](#)

[IODP map](#) (Expeditions 349–372, 374–376, 379–383, and 385)

[Integrated Ocean Drilling Program map](#) (Expeditions 301–348)

[ODP map](#) (Legs 100–210)

[DSDP map](#) (Legs 1–96)

Acknowledgments

This research used samples and data provided by the International Ocean Discovery Program (IODP). We are grateful to the IODP Technical Support staff and the R/V *JOIDES Resolution* crew for their invaluable help and dedication during what was a relentless and unremitting expedition. The perseverance and determination of the Technical Support staff were unparalleled.

The success of the expedition was also enabled by the support of the IODP Environmental Protection and Safety Panel (EPSP) and the Secretariat of Foreign Affairs (Secretaría de Relaciones Exteriores) of Mexico. The support from the National Autonomous University of Mexico (Universidad Nacional Autónoma de México [UNAM]) during the precruise clearance and visa approval processes is deeply appreciated. Support for development of the expedition objectives was provided by the Center for Dark Energy Biosphere Investigations (C-DEBI) (Catalina Island, California, USA) and the IODP U.S. Science Support Program (USSSP) (Puerto Vallarta, Mexico). The scientific groundwork that led to the conception of this expedition was supported by National Science Foundation (NSF) grants to Lizarralde (OCE011983, OCE0324983, and OCE0751901) and Teske (OCE1449604 and OCE1357239). The initial piston coring site survey was realized by Carlos Mortera (UNAM) and the crew of the R/V *El Puma*. The Ringvent survey critically depended on the HOV *Alvin* and AUV *Sentry* dives performed by the respective teams aboard the R/V *Atlantis*. Additional site survey data were acquired during R/V *Sonne* Cruise SO241 by Christian Berndt and other scientists from the Helmholtz Centre for Ocean Research Kiel as well as by Antonio Gonzalez (Centro de Investigación Científica y de Educación Superior de Ensenada [CICESE]) with funding from CICESE and IODP USSSP, and we are very grateful to those scientists and funding agencies.

The editorial staff at the IODP *JOIDES Resolution* Science Operator at Texas A&M University is thanked for their help with the publication of this document.

Foreword

The International Ocean Discovery Program (IODP) represents the latest incarnation of almost five decades of scientific ocean drilling excellence and is generally accepted as the most successful international collaboration in the history of the Earth sciences. IODP builds seamlessly on the accomplishments of previous phases: the Deep Sea Drilling Project, Ocean Drilling Program, and Integrated Ocean Drilling Program. The 2013–2023 IODP Science Plan (*Illuminating Earth's Past, Present, and Future*) defines four themes and thirteen challenges for this decade of scientific ocean drilling that are both of fundamental importance in understanding how the Earth works and of significant relevance to society as the Earth changes, at least in part in response to anthropogenic forcing. This phase of IODP represents an intense level of international collaboration in bringing diverse drilling platforms and strategies to increasing our understanding of climate and ocean change, the deep biosphere and evolution of ecosystems, connections between Earth's deep processes and surface manifestations, and geologically induced hazards on human timeframes.

The *Proceedings of the International Ocean Discovery Program* presents the scientific and engineering results of IODP drilling projects, expedition by expedition. As in the preceding Integrated Ocean Drilling Program, expeditions in the current IODP phase are conducted by three implementing organizations, each providing a different drilling capability. These are the US Implementing Organization (USIO; through September 2014) and the *JOIDES Resolution* Science Operator (JRSO; as of October 2014), providing the leased commercial vessel *JOIDES Resolution* for riserless drilling operations; JAMSTEC's Institute for Marine-Earth Exploration and Engineering (MarE3), providing the drillship *Chikyu* for riser and occasional riserless operations; and the European Consortium for Ocean Research Drilling (ECORD) Science Operator (ESO), providing "mission-specific" platforms (MSPs) for expeditions that extend the IODP operational range where neither drillship is suitable, for example, in polar environments and in shallow waters. Scheduling decisions for each capability are made by three independent Facility Boards, each of which includes scientists, operators, and platform funding partners: the *JOIDES Resolution* Facility Board (JRFB), *Chikyu* IODP Board (CIB), and ECORD Facility Board (EFB). At the beginning of the current IODP, the three Facility Boards agreed to utilize Publication Services at the USIO and now the JRSO for production of all expedition *Proceedings* volumes and reports.

The current IODP differs from prior scientific ocean drilling programs in that it has neither a central management organization nor commingled funding for program-wide activities. Yet this phase of IODP retains a fundamental integrative structural element: a "bottom-up" evaluation of all proposals for drilling expeditions by a single advisory structure composed of scientists representing all international program partners. International scientists may submit drilling proposals to the Science Support Office; all submitted proposals are then evaluated by a Science Evaluation Panel in the context of the Science Plan.

The current IODP also has a second internationally integrative level for high-level discussion and consensus-building: the IODP Forum. The Forum is not only charged with assessing program-wide progress toward achieving the current Science Plan, but also with overseeing approaches toward a new bright future of scientific ocean drilling post 2023. At present, IODP involves 25 international financial partners, including the United States, Japan, an Australia/New Zealand consortium (ANZIC), China, India, South Korea, and the eighteen members of ECORD (Austria, Belgium, Canada, Denmark, Finland, France, Germany, Ireland, Israel, Italy, the Netherlands, Norway, Poland, Portugal, Spain, Sweden, Switzerland, and the United Kingdom). This enhanced membership in the current IODP represents a remarkable level of international collaboration that remains one of the greatest ongoing strengths of scientific ocean drilling.

Dick Kroon
Chair, IODP Forum

International Ocean Discovery Program

JOIDES Resolution Science Operator

Website: <http://iodp.tamu.edu>

IODP JRSO

International Ocean Discovery Program
Texas A&M University
1000 Discovery Drive
College Station TX 77845-9547
USA
Tel: (979) 845-2673; Fax: (979) 845-4857
Email: information@iodp.tamu.edu

IODP JRSO Curation and Laboratories

IODP Gulf Coast Repository (GCR)
Texas A&M University
1000 Discovery Drive
College Station TX 77845-9547
USA
Tel: (979) 845-8490; Fax: (979) 845-1303
Email: curator@iodp.tamu.edu

European Consortium for Ocean Research Drilling, Science Operator (ESO)

Website: <http://www.ecord.org>

IODP ESO Coordinator: Science, Logistics, and Operations

British Geological Survey
The Lyell Centre
Research Avenue South
Edinburgh EH14 4AP
United Kingdom
Tel: (44) 131-667-1000; Fax: (44) 131-668-4140
Email: eso@bgs.ac.uk

IODP ESO Curation and Laboratories

IODP Bremen Core Repository (BCR)
Center for Marine Environmental Sciences (MARUM)
University of Bremen
Leobener Strasse
28359 Bremen
Germany
Tel: (49) 421-218-65560; Fax: (49) 421-218-98-65560
Email: bcr@marum.de

IODP ESO Petrophysics

European Petrophysics Consortium
Department of Geology
University of Leicester
Leicester LE1 7RH
United Kingdom
Tel: (44) 116-252-3611; Fax: (44) 116-252-3918
Email: sjd27@leicester.ac.uk

Japan Agency for Marine-Earth Science and Technology (JAMSTEC)

Website: <http://www.jamstec.go.jp/chikyue>

IODP Japan Science Operator

Institute for Marine-Earth Exploration and Engineering (MarE3)
Japan Agency for Marine-Earth Science and Technology
Yokohama Institute for Earth Sciences
3175-25 Showa-machi
Kanazawa-ku, Yokohama
Kanagawa 236-0001
Japan
Tel: (81) 45-778-5643; Fax: (81) 45-778-5704
Email: mare3-exp@jamstec.go.jp

IODP Japan Curation and Laboratories

IODP Kochi Institute for Core Sample Research (KCC)
Japan Agency for Marine-Earth Science and Technology
200 Monobe Otsu
3175-25 Showa-machi
Nankoku City, Kochi 783-8502
Japan
Tel: (81) 88-864-6705; Fax: (81) 88-878-2192
Email: kcc.contact@jamstec.go.jp

Expedition 385 participants*

Expedition 385 scientists

Andreas Teske

Co-Chief Scientist

Department of Marine Sciences
University of North Carolina at Chapel Hill
USA

teske@email.unc.edu

Daniel Lizarralde

Co-Chief Scientist

Department of Geology and Geophysics
Woods Hole Oceanographic Institution
USA

d anl@whoi.edu

Tobias W. Höfig

Expedition Project Manager/Staff Scientist

International Ocean Discovery Program
Texas A&M University
USA

hoefig@iodp.tamu.edu

Ivano W. Aiello

Sedimentologist

Moss Landing Marine Laboratories
San Jose State University
USA

iaiello@mlml.calstate.edu

Jeanine L. Ash

Organic Geochemist

Department of Earth, Environmental and Planetary Sciences
Rice University
USA

jeanine.ash@rice.edu

Diana P. Bojanova

Microbiologist

Department of Earth Sciences
University of Southern California
USA

bojanova@usc.edu

Martine D. Buatier

Sedimentologist

UMR Chrono-Environnement
Université Bourgogne Franche-Comté
France

martine.buatier@univ-fcomte.fr

Virginia P. Edgcomb

Microbiologist

Department of Geology and Geophysics
Woods Hole Oceanographic Institution
USA

vedgcomb@whoi.edu

Christophe Y. Galerne

Physical Properties Specialist

GEOMAR Helmholtz Centre for Ocean Research Kiel
Germany

Present affiliation (23 February 2021):
Forschungsgruppe "Petrologie der Ozeankruste"
Fachbereich Geowissenschaften
Universität Bremen
Germany
galerne@uni-bremen.de

Swanne Gontharet

Sedimentologist

Laboratoire d'Océanologie et de Géosciences
Université du Littoral Côte d'Opale (ULCO)
France

Present affiliation (23 February 2021):
Laboratoire d'Océanographie et du Climat: Expérimentations et
Approches Numériques
Sorbonne Université, Campus Pierre et Marie Curie
France
swanne.gontharet@locean.ipsl.fr

Verena B. Heuer

Organic Geochemist

MARUM—Center for Marine Environmental Sciences
University of Bremen
Germany
vheuer@uni-bremen.de

Shijun Jiang

Paleontologist (nannofossils)

Institute of Groundwater and Earth Sciences
Jinan University
China
sjiang@jnu.edu.cn

Myriam A.C. Kars

Paleomagnetist

Center for Advanced Marine Core Research
Kochi University
Japan
mkars@kochi-u.ac.jp

S. Khogenkumar Singh

Igneous Petrologist

National Centre for Polar and Ocean Research (NCPOR)
Marine Geoscience Division-Goa
India
khogen@ncaor.gov.in

*Affiliations at time of expedition, except where updated by participants.

Ji-Hoon Kim
Inorganic Geochemist
Petroleum and Marine Research Division
Korea Institute of Geoscience and Mineral Resources (KIGAM)
Republic of Korea
save@kigam.re.kr

Louise M.T. Koornneef
Paleomagnetist
School of Geography, Earth and Environmental Sciences
University of Plymouth
United Kingdom
louise.koornneef@plymouth.ac.uk

Kathleen M. Marsaglia
Sedimentologist
Department of Geological Sciences
California State University, Northridge
USA
kathie.marsaglia@csun.edu

Nicolette R. Meyer
Microbiologist
Department of Earth System Science
Stanford University
USA
nrmeyer@stanford.edu

Yuki Morono
Microbiologist
Kochi Institute for Core Sample Research
Japan Agency for Marine-Earth Science and Technology
Japan
morono@jamstec.go.jp

Raquel Negrete-Aranda
Physical Properties Specialist (shore-based contributor)
Department of Geology
CICESE
Mexico
rnegrete@cicese.mx

Florian Neumann
**Physical Properties/Downhole Measurements Specialist/
Observer**
Department of Geology
CICESE
Mexico
fneumann@cicese.edu.mx

Lucie C. Pastor
Inorganic Geochemist
IFREMER Centre de Bretagne, REM/EEP, Laboratoire
Environnement Profond
France
lucie.pastor@ifremer.fr

Manet E. Peña-Salinas
**Physical Properties/Downhole Measurements Specialist/
Observer**
Faculty of Marine Sciences
Universidad Autónoma de Baja California (UABC)
Mexico
manet.pena@uabc.edu.mx

Ligia L. Pérez Cruz
Paleontologist (diatoms)/Observer
Institute of Geophysics
Universidad Nacional Autónoma de México (UNAM)
Mexico
perezcruz@igeofisica.unam.mx

Lihua Ran
Paleontologist (diatoms)
The Second Institute of Oceanography
Ministry of Natural Resources
Laboratory of Marine Ecosystem and Biogeochemistry
China
lihuaran@sio.org.cn

Armelle Riboulleau
Organic Geochemist
Laboratoire d'Océanologie et de Géosciences
Université de Lille
France
armelle.riboulleau@univ-lille.fr

John A. Sarao
Paleontologist (nannofossils)
College of Geosciences
Texas A&M University
USA
john.sarao@tamu.edu

Florian Schubert
Microbiologist
Section Geomicrobiology
German Research Centre for Geosciences (GFZ Helmholtz Centre
Potsdam)
Germany
fschuber@gfz-potsdam.de

Joann M. Stock
Structural Geologist
Division of Geological and Planetary Sciences
California Institute of Technology
USA
jstock@gps.caltech.edu

Laurent M.A.A. Toffin
Microbiologist
IFREMER, Brest, CNRS, Laboratoire de Microbiologie des
Environnements Extrêmes
France
laurent.toffin@ifremer.fr

Wei Xie
Igneous Petrologist
College of Oceanography
Hohai University
China
weixie@hhu.edu.cn

Toshiro Yamanaka
Inorganic Geochemist
Department of Ocean and Environmental Sciences
Tokyo University of Marine Science and Technology
Japan
t.yamanaka@kaiyodai.ac.jp

Guangchao Zhuang
Organic Geochemist

Department of Marine Sciences
University of Georgia
USA

Present affiliation (23 February 2021):
Key Laboratory of Marine Chemistry and Technology
Ocean University of China
China
zgc@ouc.edu.cn

Outreach

Rodrigo Pérez Ortega
Onboard Outreach Officer

USSSP
USA
rpocisv@gmail.com

Operational and technical staff

Siem Offshore AS officials

Jacob C. Robinson
Master of the Drilling Vessel

Mark Robinson
Drilling Supervisor

JRSO shipboard personnel and technical representatives

Jasmine Baloch
Marine Laboratory Specialist

Chang Liu
Marine Laboratory Specialist

Timothy Blaisdell
Applications Developer

Daniel Marone
Marine Laboratory Specialist

Susan Boehm
Marine Laboratory Specialist

Brittany Martinez
Curatorial Specialist

Michael Bollen
Marine Laboratory Specialist

Aaron Mechler
Marine Laboratory Specialist

Lisa Crowder
Laboratory Officer

Mike Meiring
Engineer

Aaron de Loach
Assistant Laboratory Officer

Rick Menzel
Applications Developer

Peter Flaming
Marine Laboratory Specialist

Beth Novak
Assistant Laboratory Officer

Timothy Fulton
Imaging Specialist

Mackenzie Schoemann
Marine Laboratory Specialist

Clayton Furman
Logging Engineer (Schlumberger Offshore Services)

Sitthichat Sukpholtham
Marine Laboratory Specialist

Randy Gjesvold
Marine Instrumentation Specialist

Steven Thomas
Marine Computer Specialist

Kevin Grigar
Operations Superintendent

Garrick Van Rensburg
Marine Instrumentation Specialist

Michael Hodge
Marine Computer Specialist

Jean Wulfson
Publications Specialist

Nicolette Lawler
Marine Laboratory Specialist

IODP Publication Services staff*

Corbyn Beach
Graphics Specialist II

Emily Britt
Editor II

Douglas Cummings
Graphics Specialist III

Gudelia (“Gigi”) Delgado
Publications Coordinator

Patrick H. Edwards
Supervisor of Production

Willow S. Grosz
Editor II

Jenni Hesse
Editor IV

Rhonda Kappler
Graphics Specialist IV

Ginny Lowe
Reports Coordinator

Amy McWilliams
Supervisor of Editing

Julie Myers
Production Editor IV

Lorri Peters
Manager of Publication Services

Kenneth Sherar
Production Editor IV

Alyssa Stephens
Graphics Specialist IV

Jean Wulfson
Supervisor of Graphics

Ann Yeager
Distribution Specialist

* At time of publication.

Expedition-related bibliography*

IODP publications

Scientific Prospectus

Teske, A., Lizarralde, D., and Höfig, T.W., 2018. *Expedition 385 Scientific Prospectus: Guaymas Basin Tectonics and Biosphere*. International Ocean Discovery Program. <https://doi.org/10.14379/iodp.sp.385.2018>

Preliminary Report

Teske, A., Lizarralde, D., Höfig, T.W., and the Expedition 385 Scientists, 2020. *Expedition 385 Preliminary Report: Guaymas Basin Tectonics and Biosphere*. International Ocean Discovery Program. <https://doi.org/10.14379/iodp.pr.385.2020>

Proceedings volume

Teske, A., Lizarralde, D., Höfig, T.W., and the Expedition 385 Scientists, 2021. *Guaymas Basin Tectonics and Biosphere*. Proceedings of the International Ocean Discovery Program, 385: College Station, TX (International Ocean Discovery Program). <https://doi.org/10.14379/iodp.proc.385.2021>

Expedition reports

Teske, A., Lizarralde, D., Höfig, T.W., Aiello, I.W., Ash, J.L., Bojanova, D.P., Buatier, M.D., Edgcomb, V.P., Galerne, C.Y., Gontharet, S., Heuer, V.B., Jiang, S., Kars, M.A.C., Khogekumar Singh, S., Kim, J.-H., Koornneef, L.M.T., Marsaglia, K.M., Meyer, N.R., Morono, Y., Negrete-Aranda, R., Neumann, F., Pastor, L.C., Peña-Salinas, M.E., Pérez Cruz, L.L., Ran, L., Riboulleau, A., Sarao, J.A., Schubert, F., Stock, J.M., Toffin, L.M.A.A., Xie, W., Yamanaka, T., and Zhuang, G., 2021. Expedition 385 summary. In Teske, A., Lizarralde, D., Höfig, T.W., and the Expedition 385 Scientists, *Guaymas Basin Tectonics and Biosphere*. Proceedings of the International Ocean Discovery Program, 385: College Station, TX (International Ocean Discovery Program). <https://doi.org/10.14379/iodp.proc.385.101.2021>

Teske, A., Lizarralde, D., Höfig, T.W., Aiello, I.W., Ash, J.L., Bojanova, D.P., Buatier, M.D., Edgcomb, V.P., Galerne, C.Y., Gontharet, S., Heuer, V.B., Jiang, S., Kars, M.A.C., Khogekumar Singh, S., Kim, J.-H., Koornneef, L.M.T., Marsaglia, K.M., Meyer, N.R., Morono, Y., Negrete-Aranda, R., Neumann, F., Pastor, L.C., Peña-Salinas, M.E., Pérez Cruz, L.L., Ran, L., Riboulleau, A., Sarao, J.A., Schubert, F., Stock, J.M., Toffin, L.M.A.A., Xie, W., Yamanaka, T., and Zhuang, G., 2021. Expedition 385 methods. In Teske, A., Lizarralde, D., Höfig, T.W., and the Expedition 385 Scientists, *Guaymas Basin Tectonics and Biosphere*. Proceedings of the International Ocean Discovery Program, 385: College Station, TX (International Ocean Discovery Program). <https://doi.org/10.14379/iodp.proc.385.102.2021>

Teske, A., Lizarralde, D., Höfig, T.W., Aiello, I.W., Ash, J.L., Bojanova, D.P., Buatier, M.D., Edgcomb, V.P., Galerne, C.Y., Gontharet, S., Heuer, V.B., Jiang, S., Kars, M.A.C., Khogekumar Singh, S., Kim, J.-H., Koornneef, L.M.T., Marsaglia, K.M., Meyer, N.R., Morono, Y., Negrete-Aranda, R., Neumann, F., Pastor, L.C., Peña-Salinas, M.E., Pérez Cruz, L.L., Ran, L., Riboulleau, A., Sarao, J.A., Schubert, F., Stock, J.M., Toffin, L.M.A.A., Xie, W., Yamanaka, T., and Zhuang, G., 2021. Site U1545. In Teske, A., Lizarralde, D., Höfig, T.W., and the Expedition 385 Scientists, *Guaymas Basin Tectonics and Biosphere*. Proceedings of the International Ocean Discovery Program, 385: College Station, TX (International Ocean Discovery Program). <https://doi.org/10.14379/iodp.proc.385.103.2021>

Teske, A., Lizarralde, D., Höfig, T.W., Aiello, I.W., Ash, J.L., Bojanova, D.P., Buatier, M.D., Edgcomb, V.P., Galerne, C.Y., Gontharet, S., Heuer, V.B., Jiang, S., Kars, M.A.C., Khogekumar Singh, S., Kim, J.-H., Koornneef, L.M.T., Marsaglia, K.M., Meyer, N.R., Morono, Y., Negrete-Aranda, R., Neumann, F., Pastor, L.C., Peña-Salinas, M.E., Pérez Cruz, L.L., Ran, L., Riboulleau, A., Sarao, J.A., Schubert, F., Stock, J.M., Toffin, L.M.A.A., Xie, W., Yamanaka, T., and Zhuang, G., 2021. Site U1546. In Teske, A., Lizarralde, D., Höfig, T.W., and the Expedition 385 Scientists, *Guaymas Basin Tectonics and Biosphere*. Proceedings of the International Ocean Discovery Program, 385: College Station, TX (International Ocean Discovery Program). <https://doi.org/10.14379/iodp.proc.385.104.2021>

Teske, A., Lizarralde, D., Höfig, T.W., Aiello, I.W., Ash, J.L., Bojanova, D.P., Buatier, M.D., Edgcomb, V.P., Galerne, C.Y., Gontharet, S., Heuer, V.B., Jiang, S., Kars, M.A.C., Khogekumar Singh, S., Kim, J.-H., Koornneef, L.M.T., Marsaglia, K.M., Meyer, N.R., Morono, Y., Negrete-Aranda, R., Neumann, F., Pastor, L.C., Peña-Salinas, M.E., Pérez Cruz, L.L., Ran, L., Riboulleau, A., Sarao, J.A., Schubert, F., Stock, J.M., Toffin, L.M.A.A., Xie, W., Yamanaka, T., and Zhuang, G., 2021. Sites U1547 and U1548. In Teske, A., Lizarralde, D., Höfig, T.W., and the Expedition 385 Scientists, *Guaymas Basin Tectonics and Biosphere*. Proceedings of the International Ocean Discovery Program, 385: College Station, TX (International Ocean Discovery Program). <https://doi.org/10.14379/iodp.proc.385.105.2021>

Teske, A., Lizarralde, D., Höfig, T.W., Aiello, I.W., Ash, J.L., Bojanova, D.P., Buatier, M.D., Edgcomb, V.P., Galerne, C.Y., Gontharet, S., Heuer, V.B., Jiang, S., Kars, M.A.C., Khogekumar Singh, S., Kim, J.-H., Koornneef, L.M.T., Marsaglia, K.M., Meyer, N.R., Morono, Y., Negrete-Aranda, R., Neumann, F., Pastor, L.C., Peña-Salinas, M.E., Pérez Cruz, L.L., Ran, L., Riboulleau, A., Sarao, J.A., Schubert, F., Stock, J.M., Toffin, L.M.A.A., Xie, W., Yamanaka, T., and Zhuang, G., 2021. Site U1549. In Teske, A., Lizarralde, D., Höfig, T.W., and the Expedition 385 Scientists, *Guaymas Basin Tectonics and Biosphere*. Proceedings of the International Ocean Discovery Program, 385: College Station, TX (International Ocean Discovery Program). <https://doi.org/10.14379/iodp.proc.385.106.2021>

*The Expedition-related bibliography is continually updated online (<http://publications.iodp.org/proceedings/385/385title.html#bib>). Please send updates to PubCrd@iodp.tamu.edu.

- Teske, A., Lizarralde, D., Höfig, T.W., Aiello, I.W., Ash, J.L., Bojanova, D.P., Buatier, M.D., Edgcomb, V.P., Galerne, C.Y., Gontharet, S., Heuer, V.B., Jiang, S., Kars, M.A.C., Khogekumar Singh, S., Kim, J.-H., Koornneef, L.M.T., Marsaglia, K.M., Meyer, N.R., Morono, Y., Negrete-Aranda, R., Neumann, F., Pastor, L.C., Peña-Salinas, M.E., Pérez Cruz, L.L., Ran, L., Riboulleau, A., Sarao, J.A., Schubert, F., Stock, J.M., Toffin, L.M.A.A., Xie, W., Yamanaka, T., and Zhuang, G., 2021. Site U1550. In Teske, A., Lizarralde, D., Höfig, T.W., and the Expedition 385 Scientists, *Guaymas Basin Tectonics and Biosphere*. Proceedings of the International Ocean Discovery Program, 385: College Station, TX (International Ocean Discovery Program). <https://doi.org/10.14379/iodp.proc.385.107.2021>
- Teske, A., Lizarralde, D., Höfig, T.W., Aiello, I.W., Ash, J.L., Bojanova, D.P., Buatier, M.D., Edgcomb, V.P., Galerne, C.Y., Gontharet, S., Heuer, V.B., Jiang, S., Kars, M.A.C., Khogekumar Singh, S., Kim, J.-H., Koornneef, L.M.T., Marsaglia, K.M., Meyer, N.R., Morono, Y., Negrete-Aranda, R., Neumann, F., Pastor, L.C., Peña-Salinas, M.E., Pérez Cruz, L.L., Ran, L., Riboulleau, A., Sarao, J.A., Schubert, F., Stock, J.M., Toffin, L.M.A.A., Xie, W., Yamanaka, T., and Zhuang, G., 2021. Site U1551. In Teske, A., Lizarralde, D., Höfig, T.W., and the Expedition 385 Scientists, *Guaymas Basin Tectonics and Biosphere*. Proceedings of the International Ocean Discovery Program, 385: College Station, TX (International Ocean Discovery Program). <https://doi.org/10.14379/iodp.proc.385.108.2021>
- Teske, A., Lizarralde, D., Höfig, T.W., Aiello, I.W., Ash, J.L., Bojanova, D.P., Buatier, M.D., Edgcomb, V.P., Galerne, C.Y., Gontharet, S., Heuer, V.B., Jiang, S., Kars, M.A.C., Khogekumar Singh, S., Kim, J.-H., Koornneef, L.M.T., Marsaglia, K.M., Meyer, N.R., Morono, Y., Negrete-Aranda, R., Neumann, F., Pastor, L.C., Peña-Salinas, M.E., Pérez Cruz, L.L., Ran, L., Riboulleau, A., Sarao, J.A., Schubert, F., Stock, J.M., Toffin, L.M.A.A., Xie, W., Yamanaka, T., and Zhuang, G., 2021. Site U1552. In Teske, A., Lizarralde, D., Höfig, T.W., and the Expedition 385 Scientists, *Guaymas Basin Tectonics and Biosphere*. Proceedings of the International Ocean Discovery Program, 385: College Station, TX (International Ocean Discovery Program). <https://doi.org/10.14379/iodp.proc.385.109.2021>

Supplementary material

- Teske, A., Lizarralde, D., Höfig, T.W., and the Expedition 385 Scientists, 2021. Supplementary material, <https://doi.org/10.14379/iodp.proc.385supp.2021>. *Supplement to Teske, A., Lizarralde, D., Höfig, T.W., and the Expedition 385 Scientists, Guaymas Basin Tectonics and Biosphere*. Proceedings of the International Ocean Discovery Program, 385: College Station, TX (International Ocean Discovery Program). <https://doi.org/10.14379/iodp.proc.385.2021>