



HAL
open science

Understanding of the key factors influencing the properties of emulsions stabilized by sodium caseinate

Wei Liao, Adem Gharsallaoui, Emilie Dumas, Abdelhamid Elaïssari

► To cite this version:

Wei Liao, Adem Gharsallaoui, Emilie Dumas, Abdelhamid Elaïssari. Understanding of the key factors influencing the properties of emulsions stabilized by sodium caseinate. *Comprehensive Reviews in Food Science and Food Safety*, 2022, 21 (6), pp.5291-5317. 10.1111/1541-4337.13062 . hal-03996462

HAL Id: hal-03996462

<https://hal.science/hal-03996462v1>

Submitted on 9 Nov 2023

HAL is a multi-disciplinary open access archive for the deposit and dissemination of scientific research documents, whether they are published or not. The documents may come from teaching and research institutions in France or abroad, or from public or private research centers.

L'archive ouverte pluridisciplinaire **HAL**, est destinée au dépôt et à la diffusion de documents scientifiques de niveau recherche, publiés ou non, émanant des établissements d'enseignement et de recherche français ou étrangers, des laboratoires publics ou privés.

1 **Understanding of the key factors influencing the properties of**
2 **emulsions stabilized by sodium caseinate**

3

4 Wei Liao¹, Adem Gharsallaoui^{1*}, Emilie Dumas¹, Abdelhamid Elaissari²

5

6 ¹ Univ. Lyon, University Claude Bernard Lyon 1, CNRS, LAGEPP UMR 5007,

7 43 Bd 11 Novembre 1918, 69622 Villeurbanne, France

8 ² Univ Lyon, University Claude Bernard Lyon 1, CNRS, ISA-UMR 5280, 69622

9 Villeurbanne, France

10

11 ***Corresponding author:**

12 Dr. Adem Gharsallaoui : adem.gharsallaoui@univ-lyon1.fr

13

14

15 **Short version of title (running head)** [Under 40 characters]: Sodium caseinate
16 stabilized O/W emulsions

17 **Choice of journal/topic :** *Comprehensive Reviews in Food Science and Food Safety*

18 **Abstract**

19 Emulsions can be easily destabilized under various conditions during preparation and
20 storage. Therefore, it is necessary to understand the factors that influence the stability
21 of emulsions, which is essential for their subsequent studies. Sodium caseinate (CAS)
22 is a well-used nutritional and functional ingredient in emulsion preparation due to its
23 good solubility and emulsifying properties. CAS-stabilized emulsions can be
24 considered good food emulsion delivery systems, but their applications are still
25 limited under certain conditions due to their instability to creaming and aggregation.
26 Therefore, the purpose of this review is to provide a complete overview of how
27 different environmental stresses and processing conditions affect the stability of
28 CAS-stabilized emulsions and how to improve their stability. Initially, the general
29 properties of CAS as emulsifiers and the characterization of CAS stabilized
30 oil-in-water (O/W) emulsions were summarized. Secondly, the major instability
31 mechanisms that operate in CAS-stabilized emulsions were presented. Furthermore,
32 the general factors like pH, emulsifier concentration, ionic strength, oxidation and
33 processing conditions, affecting the stability of CAS-stabilized O/W emulsion were
34 discussed. On this basis, the commonly used methods for evaluating emulsion
35 stability are introduced. Finally, state-of-the-art strategies to improve CAS-based
36 emulsion stability are also described and summarized. This review is expected to
37 provide a theoretical basis for the future applications of CAS in food emulsions.

38 **Keywords:** Sodium caseinate; Emulsion characterization; Emulsion stability;

39 Instability mechanisms

40 **1. Introduction**

41 Food emulsions, a dispersion systems composed of two or more incompatible
42 phases, play an essential role in food systems since they directly affect the color, the
43 texture, and the mouthfeel of food products (McClements, 2015). Typically,
44 emulsions can be prepared in the presence of emulsifiers, which are usually composed
45 of hydrophilic and hydrophobic parts to reduce the interfacial tension at the O/W or
46 W/O interface. Until now, synthetic emulsifiers food additives, like sorbitan esters,
47 sugar esters, and polysorbates, are still intensively applied in the most frequently
48 consumed foods although some reports showed their possible harmful effects on
49 intestinal barriers and microbiota (Csáki & Sebestyén, 2019). Currently, there is a
50 growing worldwide trend in the food field to replace commercial synthetic emulsifiers
51 with natural “label-friendly” ones. Consequently, food manufactures have focused on
52 identifying and characterizing natural emulsifiers, such as proteins, lipids,
53 polysaccharides, saponins, etc. (Dammak et al., 2020), that can be labeled as “clean”
54 in emulsion-based food products. Some food proteins from different sources like milk,
55 whey, eggs, legume, oilseed, and so on (Kim et al., 2020) have been shown to act as
56 natural emulsifiers by adsorbing at oil droplets because of their good solubility and
57 amphiphilic ability.

58 At present, the most widely applied commercial protein-based emulsifiers are
59 casein proteins (Wang et al., 2013), which are generally sold industrially in the form
60 of sodium caseinate (CAS). CAS are composed of all casein fractions: α_{s1} - and

61 α_{s2} -caseins, β -casein, and κ -casein, which have strong amphiphilic properties and
62 have ability to rapidly reduce the O/W interfacial tension during emulsification
63 process (Walstra & Jenness, 1984). Different techniques, such as high-pressure
64 homogenization (Liao et al., 2021), high ultrasonic (Wan et al., 2022) and
65 microfluidizer (Ebert et al., 2017), etc. have been employed to produce stable
66 CAS-based O/W emulsion systems. Nevertheless, CAS-based emulsions are prone to
67 instability at certain unfavorable compositional and environmental conditions, such as
68 different solution conditions (pH, protein concentration, ionic strength,
69 homogenization conditions) and different environmental stresses (thermal processing
70 and oxidation). These specific conditions limit the application of CAS-based
71 emulsions in certain high-value fields. In recent years, several reviews have
72 summarized various formulations of nanoemulsions, preparation methods, food
73 applications, and methods to improve stability through using mixed emulsifiers,
74 protein-polysaccharide complexation or conjugates (Dammak et al., 2020; Evans et al.,
75 2013; Kim et al., 2020; McClements, 2007; Ribeiro et al., 2021). In this context, it is
76 necessary to understand the factors that influence the stability of emulsions.
77 Nonetheless, there are still few review papers that have systematically explored the
78 factors affecting CAS-stabilized emulsions. In the present review, we will provide
79 general factors affecting the stability of CAS-stabilized O/W emulsions, such as
80 environmental stress and process conditions, and the relative importance of the
81 various instability mechanisms of CAS-based emulsions as well as the relationships
82 between them. In addition, the methodology for detecting emulsion stability and how

83 to improve the stability of CAS-stabilized food emulsions will be discussed.

84 **2. Sodium caseinate and its emulsifying ability**

85 CAS shares similar composition with casein micelles, which is a partially
86 aggregated mixture of four individual caseins, α_{s1} - and α_{s2} -caseins, β -casein, and
87 κ -casein. In industry, CAS is generally manufactured by acid precipitation of casein
88 micelles and then neutralized with alkali for spray-drying (Wusigale et al., 2020). By
89 adding the cation of the alkalizing agent, various types of caseinate could be produced,
90 such as sodium, calcium, potassium, and ammonium caseinate. Among those, sodium
91 caseinate (CAS) is more commercially available. The aqueous suspension of CAS has
92 been reported to be a particle suspension with a weight-average molar mass of
93 1200–4700 kDa and a diameters range of 50 to 120 nm (Wusigale et al., 2020). As an
94 important dairy ingredient, CAS can endow food with certain functionalities in terms
95 of water solubility, viscosity, emulsification, foamability and encapsulation ability.
96 The application of CAS as an alternative source of food emulsifiers in the food
97 industry has attracted considerable attention, such as coffee whiteners, cream liqueurs
98 and whipping ingredients (Euston & Goff, 2019).

99 Compared to the most other food proteins, CAS is more disordered and
100 hydrophobic with an extremely open and flexible conformation (Dickinson, 1999).
101 α_{s1} -casein and β -casein are the two main individual caseins that account for
102 approximately 75% of the total milk casein. Both casein proteins have been shown to
103 be the main contributors to the emulsifying properties of CAS and they can rapidly

104 adsorb at the O/W interface during emulsification to protect newly formed droplets
105 against incipient flocculation and coalescence. This is the fact that the high proportion
106 of proline residues disrupts α -helix and β -sheet secondary structures and there are
107 almost no cysteine residues in α_{s1} - and β -casein (Dickinson, 1994). Even though both
108 caseins proteins exhibited strong tendency to adsorb at hydrophobic surface, the
109 mechanisms of α_{s1} -casein and β -casein acting on the oil-water interface are
110 significantly different. Dickinson (1988) compared the adsorption of α_{s1} - and β -casein
111 in oil-water emulsion and the data indicated that β -casein predominates at the
112 interface since its equilibrium interfacial free energy is slightly lower than α_{s1} -casein.
113 The train-loop-tail model has been used to explain the adsorbed layer structure by
114 CAS (Dalglish, 1996). As shown in Fig. 1a, β -casein develops a highly charged tail
115 dangling away from the droplet surface as the N-terminal of the chain is the
116 hydrophilic charged residue, and the remaining parts adsorbed on the surface in the
117 shape as “trains” and small “loops”, which are predominantly hydrophobic. The
118 adsorbed layer thickness is mainly determined by the distribution of “loops” and the
119 dangling “tails” which also provide steric repulsions in the emulsion systems. The
120 “tails” parts are very sensitive to the solution environmental parameters like pH and
121 ionic strength, but the hydrophobic parts “loops” of the chain are relatively insensitive
122 (Dickinson, 1999). α_{s1} -casein adsorbed layer also develops the “loops” (Fig. 1a) on
123 the oil-water interfaces as it contains three discontinuous hydrophobic regions
124 (Shimizu et al., 1986). It was reported that α_{s1} - casein provides less surface coverage
125 and thinner layer during emulsification than β -casein (Dalglish, 1996), which

126 inefficiently provides steric repulsions. However, α_{s1} -casein provides higher
127 electrostatic repulsions than β -casein since the amino-acid sequence is significantly
128 different. On the other hand, the hydrophobic plots of amino acid residues in α_{s2} - and
129 κ -casein indicated that they have surface-active properties (Su & Everett, 2003) and
130 these caseins could also be adsorbed on the oil-water interfaces and contributes to the
131 surface stability. Kim et al. (2020) drew a schematic diagram (Fig. 1b) of the
132 adsorption of 4 casein proteins at the oil-water interface based on the research of
133 Dickinson (1989), which is mainly divided into 3 steps: (1) Simultaneous adsorption
134 of α_{s1} and κ -casein in the initial diffusion stage; (2) Subsequent displacement of α_{s1}
135 and κ -casein by β -casein from the interface; (3) Formation of a mixture with β -casein
136 as the main component film. In fact, due to the interactions between casein molecules
137 and other food ingredients, the characteristics of the CAS layer adsorbed in many
138 food emulsions are much more complicated than just described.

139 **3. The major instability mechanisms in CAS-stabilized oil-in-water emulsions**

140 Generally, a food emulsion system is prepared using a high shear device (e.g.,
141 colloidal grinding, high-speed agitator and high-pressure homogenizer) in which the
142 emulsion mixes oil and water in the presence of emulsifiers (McClements, 2015). For
143 instance, the basic process of preparing a CAS-based emulsion by high-pressure
144 homogenization is to force a coarse mixture of oil and CAS aqueous solution through
145 narrow crevices, resulting in cavitation and intense laminar shear to disperse well. In
146 this process, the casein molecules are adsorbed to the oil-water interface through

147 unfolding and rearrangement, forming a stable interface layer around the oil
148 molecules. The degree of protein molecules unfolding rely on the flexibility of their
149 molecular structure, which depends on the strength of the forces that maintain the
150 secondary and tertiary structures. As CAS has a fairly flexible structure, it can expand
151 rapidly at the interface and then form an extended layer of about 10 nm (Dalgleish,
152 1990). The colloidal stability of the CAS-stabilized emulsion systems is eventually
153 determined together by electrostatic repulsions and steric repulsions caused by all the
154 interactions between adsorbed casein layers.

155 It is well established that emulsions are thermodynamically unstable, so various
156 physical and chemical mechanisms (including creaming, flocculation, coalescence,
157 Ostwald ripening and phase separation, as shown in Fig. 2) occur over time
158 (Dickinson, 2019). Indeed, these instability mechanisms can occur simultaneously in
159 CAS-stabilized emulsion systems, and the emergence of one instability mechanism
160 encourages other mechanisms. When the free energy of surface interactions is
161 repelling at all droplet surface-to-surface separation values, the emulsion will be
162 stable. However, when the free energy of interactions has an attraction within a
163 certain separation range, the droplets will tend to flocculate, which may adversely
164 affect coalescence and creaming. These instability mechanisms occur in CAS-based
165 emulsion depending on the overall balance amongst electrostatic forces, steric forces,
166 and van der Waals forces. Generally, CAS-based emulsions are unstable under
167 unfavorable compositional and environmental conditions, such as a pH value close to
168 the isoelectric point (pI) of CAS (pH 4.6) (Bhat et al., 2016), high processing (Mao et

169 al., 2010), high temperatures (Mao et al., 2010), freeze-thaw cycles (L. Wang et al.,
170 2020) and high ionic strength (Sharma et al., 2017). In the following part, we discuss
171 several common instability mechanisms in CAS-based emulsion.

172 **Flocculation:** Flocculation is a process in which two or more droplets combine
173 with each other, but each remains intact. When attractive interactions between
174 droplets outweigh repulsive interactions, droplets tend to flocculate (Dickinson, 2019).
175 Due to the Brownian motion, droplets are usually close to each other. The occurrence
176 of flocculation will depend on the forces acting on the droplets and the time whether
177 they stay close together for long period time. Under the certain situation, the presence
178 of flocs is related to visible changes in the appearance of emulsion (Martínez-Padilla
179 et al., 2021). The concentration of emulsifiers plays an essential role in the stability
180 of CAS-based emulsions. For example, to avoid flocculation, even emulsions
181 prepared at pH 7, the oil/protein ratio must be neither too low nor too high. At low
182 caseinate content, casein molecules are generally shared by two or more oil droplets
183 in emulsion systems which can lead to bridging flocculation, apparently accompanied
184 by some coalescence. This type of flocculation is, at least partly, irreversible. In the
185 presence of an excess of non-absorbent caseins in the continuous phase, depletion
186 flocculation will occur which is reversible with no measurable change in droplet-size
187 distribution after dilution (Dickinson et al., 1997). Typically, only strong shear forces
188 like high-speed homogenization could destroy the bridging flocculation, while
189 depletion flocculation can be simply disrupted by gentle stirring or dilution. Our
190 recent study (Liao et al., 2022) supported that depleted flocculation-induced droplet

191 aggregation is reversible. The high content of pectin promoted extensive aggregation
192 of CSA-based droplets (observed by microscopy), but the droplet size of the emulsion
193 did not change significantly. In addition, caseinate molecules are sensitive to both pH
194 and ionic strength. Different pH values and ionic forces in the continuous phase can
195 affect the dissociation of ionized groups, thus determining the states of flocculation in
196 emulsion systems. The macroscopic properties of CAS-based emulsions like
197 appearance, rheology, and sensory property are strongly influenced by the degree and
198 nature of emulsion flocculation. Generally, the occurrence of flocculation is harmful
199 which leads to an increase in particle size to speed up gravity separation in some
200 foods like emulsion-based soft drinks. However, in some specific cases, flocculation
201 can be used to control the creation of an ideal texture feature. On the other hand, the
202 flocculation state has a significant influence on other instable phenomena, such as
203 droplet coalescence, phase separation and Ostwald ripening (Ma & Chatterton, 2021)

204 **Coalescence:** Coalescence is defined as the process of two or more droplets
205 coming into contact and merging, creating larger droplets. This can happen if two
206 droplets are very close for a while. As described above, the occurrence of flocculation
207 in the emulsion is usually accompanied by coalescence. Moreover, the mechanism
208 and the intermolecular forces of flocculation and coalescence are similar. One is
209 considered reversible (flocculation), which a strong force can be used to separate the
210 aggregates. The other is irreversible (coalescence). The occurrence of coalescence in
211 emulsion systems significantly affects the processing or shelf life of O/W emulsions.
212 It was reported that appropriate content of CAS-based emulsion systems was very

213 stable towards creaming and coalescence due to the thicker interfacial film formed by
214 casein proteins (Dickinson et al., 1997). The adsorbed film formed by the emulsifier
215 may rupture spontaneously during storage. The formation of a thicker water phase
216 film at the oil-water interface helps prevent droplet coalescence (droplet melting) and
217 achieve reasonable stability, thus providing the appropriate life for the final emulsified
218 product (Costa et al., 2019). The larger the droplet diameter, the thinner the film
219 thickness and the lower the oil-water interfacial tension, the easier the film ruptures to
220 lead to irreversible coalescence (Fredrick et al., 2010). However, under certain
221 circumstances, CAS-based emulsions have a tendency to coalesce. An recent study
222 (Lamothe et al., 2019) reported that, under gastric conditions, CAS-stabilized
223 emulsions showed extensive fat droplet coalescence, whereas coalescence was very
224 limited in the whey protein-stabilized emulsion. They attributed this difference to the
225 fact that CAS has highly flexible and disordered molecules that are more sensitive in
226 the gastric environment. In an oil-in-water emulsion, the coalescence eventually forms
227 a layer of oil on top of the solution, called demulsification. In the manufacture of
228 some products, partial coalescence is desired to obtain the specific properties in
229 products like ice cream. It contributes to the structure, physical and sensory flavors
230 like fattiness and creaminess of the final products (Chen et al., 2019).

231 **Gravitational separation:** Emulsions tend to be divided into different layers of
232 oil and water due to the different densities and the different polarities between oil and
233 water molecules. Under the effect of gravitational separation, if the density of the
234 droplets is lower than that of the surrounding liquid, they tend to move upwards,

235 which is termed creaming. Conversely, if they are denser than the surrounding liquid,
236 they tend to move downward, which is termed sedimentation. This phenomenon is
237 usually accompanied by emulsion separation, resulting in a droplet-rich cream layer
238 and a droplet depleted watery layer. Gravitational separation can be used to measure
239 emulsion stability by visual or optical imaging, but it usually takes a long time. In
240 addition, the correlation between creaming and bridging flocculation was observed in
241 the CAS stabilized O/W emulsion (Dickinson et al., 1997). In a dilute O/W emulsion,
242 the occurrence of bridging flocculation can speed up the creaming of emulsion since
243 the larger buoyance forces acting on flocs are stronger than those acting on individual
244 droplets (Dickinson et al., 1997). On the contrary, in a higher concentrated O/W
245 emulsion, bridging flocculation can retard creaming as a network structure is formed
246 in emulsion system. Meanwhile, the creaming generally occurs before coalescence,
247 followed by phase separation, and its degree in O/W emulsion can be described by
248 creaming index (Onsaard et al., 2006). So, the creaming index can predict the degree
249 of droplet aggregation: the higher the index, the more the droplet aggregation.

250 **Ostwald ripening:** Ostwald ripening manifests itself as a time-lapse, as the oil
251 molecules diffuse through continuous phases, smaller droplets in the emulsion system
252 increase the size of larger droplets at the expense of themselves (Jiao & Burgess,
253 2003). The driving force in this process is the curvature effect, in which oil molecules
254 near smaller droplets are more soluble than larger droplets. Prof. Laplace pointed out
255 that the concave pressure of the curved interface is higher than the convex pressure,
256 which is proportional to the tension of the interface multiplied by the curvature. For a

257 sphere, the curvature is given by the reciprocal of its radius. As a result, the dispersion
258 of the smaller particles increases their solubility in the continuous phase, the smaller
259 particles shrink (eventually disappear), and the larger particles become larger.
260 Generally, Ostwald ripening is negligible in food emulsions containing low
261 water-soluble long chain triglycerides. However, when more water-soluble oils
262 (essential oils, flavor oils, short-chain triglycerides) are used in O/W emulsions,
263 Ostwald ripening is a major obstacle that should be carefully controlled during
264 long-term storage (Park et al., 2020). Our previous study indicated that altering the oil
265 composition by adding medium or long-chain carrier oil before homogenization can
266 significantly inhibit Ostwald ripening of CAS-based emulsions containing essential
267 oils (Liao et al., 2021). In addition, to prevent or delay Ostwald ripening in food
268 emulsions, another effective method is to combine protein emulsifiers with some
269 amphiphilic polysaccharides to form a thicker interfacial film around the oil droplets
270 (Artiga-Artigas et al., 2020; Dickinson, 2019).

271 **4. Main factors determining the stability of CAS-stabilized emulsions**

272 Physical instability refers to changes in the spatial arrangement or size
273 distribution of the emulsifier droplets over time, such as gravitational separation,
274 flocculation and aggregation, while chemical instability involves changes in the
275 composition of the emulsion, such as oxidation and hydrolysis (McClements, 2015).
276 To meet the requirements of industrial applications, researchers must understand the
277 factors that determine emulsion stability. As reported by McClements (2007),

278 effective methods to prevent adverse changes in food emulsions need to be
279 determined based on the physical and chemical properties of the ingredients used to
280 stabilize these emulsions. As we described above, fine O/W emulsions prepared by
281 CAS as the only emulsifier are very sensitive to the influence of various factors such
282 as temperature, pH value, ionic strength, calcium ion content, protein / oil ratio, etc.
283 These most important factors influencing the stability of CAS-stabilized O/W
284 emulsions will be discussed in the following section.

285 **4.1. Effect of pH**

286 One disadvantage of using CAS as an emulsifier is known to be its limited
287 applicability in acidified foods (Perugini et al., 2018). It is well known that the
288 environmental pH has a great influence on protein solubility, surface charge (zeta
289 potential), and surface hydrophobicity. Casein proteins in milk are very stable systems
290 that can withstand the stringent conditions imposed during commercial processing
291 (Bhat et al., 2016). However, they are still destroyed under certain temperature and
292 pH conditions, especially acid pH (near their isoelectric point: ~ 4.6), resulting in
293 reduced stability, which is reflected by visible flocculation or serum separation.
294 Perrechil and Cunha (2010) studied the effect of pH on the stability of CAS stabilized
295 water-in-oil emulsions and their results showed that the creaming behavior of
296 emulsions was largely influenced by the pH of the emulsions.

297 As expected, the weakest emulsifying property of CAS was observed around its
298 isoelectric point (pI) (Wang et al., 2019). When the pH value is far from its pI, the

299 absolute value of zeta potential of CAS-coated droplets increases and then it can
300 provide enough electrostatic repulsions between droplets against flocculation. This is
301 the fact that more negatively or positively charged proteins allow for more
302 protein-solvent interactions and greater diffusion rates to the interface, which also
303 contributes to increased interfacial tension of particles and the stability of emulsions.
304 The interfacial tension can also be changed by pH. Amine e et al. (2014) reported that
305 the interfacial tension of CAS particles is usually lower at alkaline pH than at pH 7,
306 which contributes to a more expansive structure of the protein at the interface and
307 then leads to a smaller emulsion size. Dickinson (1999) described that the “tail”
308 extension around oil droplet formed by β -casein and the maximum extent of the
309 loop-like region formed by α_{s1} -casein are diminished as pH is reduced from 7 to 5.5,
310 resulting in lower steric repulsion. Nevertheless, by mixing other emulsifiers such as
311 adsorbed polysaccharides (Shi et al., 2021; Surh et al., 2006) and non-ionic
312 surfactants (Perugini et al., 2018), CAS can also be used in acidic environments to
313 stabilize emulsions. Perugini et al. (2018) used a non-ionic surfactant (Tween 20) in
314 combination with CAS as blending emulsifiers of oil/water nanoemulsions to prepare
315 nanoemulsions and their results showed that the addition of Tween 20 effectively
316 enhanced the stability of the emulsion under acidic conditions. As shown in Fig. 3, the
317 effects of pH and pectin type on the zeta potential and creaming stability of O/W
318 emulsion stabilized by CAS were well investigated (Surh et al., 2006). The addition of
319 pectin to CAS-based emulsions lead to an obvious change in the pH dependence of
320 the surface droplet charge. At pH value around the pI of caseinate, the blending

321 emulsifier is negatively charged. Optical microscope measurements from their results
322 also showed that CAS stabilized emulsion is dispersed well at a pH value higher than
323 5.0 and aggregates near the pI.

324 **4.2. Effect of ionic strength**

325 As the ionic strength is able to screen the electrostatic repulsions between the
326 droplets, the presence of certain ions, especially calcium, may affect the interactions
327 between protein stabilized droplets and induce flocculation (Dickinson, 2019).
328 Targeted screening can promote aggregation and reduce adsorption at the emulsion
329 interface, depending on the type and concentration of ions. Generally, protein-based
330 food products usually need to be used in combination with various minerals in
331 practical applications to meet different needs. Thus, the effect of different minerals on
332 emulsion stability should be better taken into account. It has been shown that the
333 addition of 15 mM CaCl_2 to a CAS stabilized emulsion caused destabilization
334 (Dickinson, 2010). Qin et al. (2018) investigated the effect of ionic strength on the
335 diameter and zeta potential of CAS stabilized emulsion by sodium and calcium ions,
336 respectively. As shown in Table 1, the addition of NaCl in different concentration (0.0
337 - 1.1 mg/mL) exhibited no obvious effect on the size and zeta potential of
338 caseinate-stabilized emulsions, while the addition of CaCl_2 showed a higher influence.
339 With the increase of CaCl_2 concentration, the zeta potential was significantly
340 decreased which may be caused by higher ionic strength shielding the surface charge
341 of CAS stabilized droplets. The reduction of electrostatic repulsions between droplets

342 promoted flocculation and then increased the size of droplets. A similar phenomenon
343 was reported in the study of caseinate stabilized clove oil nanoemulsion (Sharma et al.,
344 2017). Multivalent counteracting ions such as Ca^{2+} , Fe^{2+} or Fe^{3+} are more effective
345 than monovalent ions in promoting emulsion instability, because they are shielded,
346 electrostatic interactions are more effective, and they can be combined with the
347 droplet surface, thus reducing the zeta potential (Liang, Matia-Merino, et al., 2017).
348 Moreover, Dickinson and Davies (1999) found that the addition of calcium salts
349 before or after homogenization had significantly different effects on the stability of
350 CAS stabilized emulsions under the same preparing process. These different
351 behaviors of electrostatic force can be regarded as the changes of charge density and
352 protein aggregation state, and these changes will further work on the adsorption layer
353 structure and protein surface coverage.

354 It is worth noting that, in the presence of excessive unabsorbed CAS, the addition
355 of appropriate amounts of CaCl_2 to emulsions can eliminate the effect of depletion
356 flocculation (Ye & Singh, 2001). This is the fact that the addition of ionic molecules
357 in the aqueous phase results in an increased size of casein aggregates due to the screen
358 effect, thereby decreasing the amount of depleting unabsorbed proteins.

359 **4.3. Effect of emulsifier concentration**

360 The protein concentration plays an important role in the stability, color, nutrition
361 and taste of the final emulsion. To improve stability against aggregation, it is
362 significant to make sure that the protein/oil ratio is in the appropriate range even for

363 an emulsion formed at neutral pH and low ionic strength. Otherwise,
364 protein-stabilized emulsions are susceptible to different types of flocculation during
365 storage, leading to increased creams or serum separation. As reported by Singh (2011),
366 with sufficient CAS molecules to cover the oil droplets during homogenization,
367 emulsions are usually stable for long-term storage against coalescence. However,
368 when the concentration is relatively low, casein proteins are insufficient to completely
369 cover the oil-water interfaces during the homogenization process. As a result, casein
370 molecules are shared by two or more droplets, leading to bridging flocculation. The
371 effect of CAS concentration on the stability of emulsion through high-pressure
372 homogenization was carried out by Sánchez & Patino (2005). As shown in Fig. 4,
373 their results indicated that there is a critical concentration of CAS in the aqueous
374 phase : when CAS concentrations were above 1% (w/w), the emulsifying capacity
375 was constant and the size distribution of droplets was monomodal, however, at CAS
376 concentrations below 1% (w/w), the size distribution of droplets in the emulsion was
377 bimodal and the emulsions exhibited some degree of flocculation, which was
378 inhibited to some extent by the presence of Sodium Dodecyl Sulfate (SDS). It is
379 worth noting that excess of caseinate (>2%, w/w) increased the rate of creaming
380 which may be attributed to the presence of depletion flocculation. Dickinson (1997)
381 similarly reported that attractive depletion interactions may exist between pairs of
382 dispersed particles when a colloidal system contains a large amount (>3.0 wt.%) of
383 smaller size of unabsorbed molecules. However, a recent rheological study of
384 nanoemulsions prepared with CAS as the sole emulsifying agent found no evidence of

385 depletion flocculation over a wide range of protein contents (Roulet et al., 2019).
386 This could be attributed to the relatively small droplet size ($d_{43} \sim 130$ nm). It has been
387 reported that sufficiently high protein concentrations may lead to a stronger droplet
388 network and this network can lead to partial restabilization of the emulsion against
389 creaming and serum separation (Dickinson, 2019). Liang et al. (2014) investigated the
390 relationship between creaming behavior and depleted flocculation of CAS-stabilized
391 O/W emulsions with different contents of CAS (1–10% w/w). At low CAS
392 concentrations (less than 3% (w/w)), depletion-induced droplet networks formed and
393 showed fast phase separation. At middle CAS concentrations (3–5% (w/w)), the
394 increase of non-adsorbed casein concentration increases the number of droplets
395 involved in the network, thus stabilizing the emulsion structure dynamically to
396 prevent creaming. Surprisingly, at higher caseinate concentrations ($\geq 6\%$ (w/w)), the
397 formation of droplet network shows obvious delay which was probably caused by the
398 higher continuous phase viscosity decreasing the formation of the droplet network.
399 These results show that there is an optimal protein concentration for CAS that can
400 produce good, saturated surface coverage, and maximum emulsion stability against
401 these instability mechanisms.

402 **4.4. Effect of homogenization process**

403 The stability of an emulsion during storage is closely related to its homogeneity,
404 especially its size distribution. Indeed, nanoemulsions (diameter < 200 nm) generally
405 have better physical and chemical stability than conventional emulsions (>1 μm)

406 because they are kinetically stable which are more stable to gravitational separation,
407 coalescence, and flocculation than conventional emulsions (Sneha & Kumar, 2021).
408 There are two types of emulsification techniques used to produce emulsified systems:
409 a top-down approach and a bottom-up approach (Liao, Badri, et al., 2021). The
410 top-down methods generally need large energy input for breaking up the dispersed
411 phase into small structures by reducing the size and shaping the structure. The
412 bottom-up methods generally include self-assembly, phase inversion, and spontaneous
413 emulsification, which require the use of organic solvents or the addition of industrial
414 surfactants. For food emulsion-based products, a top-down approach was normally
415 selected for security reasons. High-speed homogenization, high-pressure
416 homogenization, ultrasonic emulsification, membrane emulsification,
417 microfluidization and so on have been widely used in different experimental
418 laboratories for the preparation of nanoemulsions. The advantages and disadvantages
419 of these techniques are summarized in previous reports (Saffarionpour, 2019; Sneha &
420 Kumar, 2021). There are significant differences in droplet size and distribution
421 available in different homogenization devices, and these differences will further affect
422 the stability of the emulsions (Jacobsen, 2016). For example, it has been reported that
423 high-pressure homogenizers can be used to produce nanoemulsions, but excessive
424 ultrasonic power or ultrasonic time course can lead to increased temperature, resulting
425 in flocculation or coalescence (Mao et al., 2010). Hebishy et al. (2017) compared
426 different methods to prepare CAS stabilized emulsions. Their results showed that
427 nanoemulsions produced by high-pressure homogenizers exhibited lower size and

428 much higher stability than those produced by conventional homogenization. At the
429 same time, different pressure settings in high-pressure homogenization also have a
430 significant effect on the stability of the emulsion. When sufficient CAS concentrations
431 are used, pressure higher than 200 MPa resulted in physically and oxidatively stable
432 emulsions, while the use of lower homogenization pressure (100 MPa) resulted in
433 significant creaming. A similar trend was observed in Carpenter and Saharan's (2017)
434 study where mustard oil nanoemulsions were prepared by different ultrasound powers,
435 and they found that time and power parameters of ultrasonic can lead to increases or
436 reductions in mean particle size. Another study (Let et al., 2007) indicated that less
437 lipid oxidation of milk-based emulsions was obtained at high pressure (22.5 MPa)
438 than at lower pressure (5 MPa).

439 **4.5. Effect of heating process**

440 Food products based on emulsions generally undergo heat treatment at higher
441 temperatures such as cooking and sterilization. One of the reasons why CAS has been
442 widely used in food emulsions is that it has a relatively higher heating resistance
443 ability than other common protein emulsifiers such as whey proteins and pea proteins
444 (Liang, Matia-Merino, et al., 2017). This is the fact that relatively flexible casein
445 molecules do not undergo significant heat-induced conformational changes like
446 globular proteins (Srinivasan et al., 2002). Nevertheless, dephosphorylation,
447 proteolysis and polymerization of CAS solutions can occur at higher temperatures and
448 longer heating time (Liang, Gillies, et al., 2017). Therefore, it is still important to fully

449 understand the physical and chemical changes in CAS stabilized emulsions caused by
450 heating and to develop strategies to control the destabilizing processes. Qin et al.
451 (2018) studied the effect of different heating temperatures on CAS stabilized
452 emulsions, and their results indicated that CAS has an excellent heating tolerance. The
453 average diameter of CAS-based emulsions did not show obvious change even when
454 the emulsions were heated to 90 °C. McSweeney (2004) reported that higher heating
455 can affect the particle size of milk protein stabilized emulsions. The particle size
456 distribution curve of the model emulsions (at pH 6.8) gradually increased from 1 µm
457 before heating to ~10 µm when heated at 140 °C for 80 s. In this case, the unadsorbed
458 caseinate protein fraction acts as "glue", causing the emulsion droplets to entangle
459 into large aggregates. On the other hand, the disulfide bond between the milk proteins
460 during the heating process can also grow the particle size due to the flocculation of
461 the droplets. Liang, Gillies, et al. (2017) found that the phase separation of
462 CAS-stabilized emulsions was markedly dependent on the duration of the heat
463 treatment. The heat treatment at 120 °C caused casein proteins degradation and
464 changed the intact CAS concentration in the continuous phase, thereby resulting in a
465 greater extent of flocculation. Srinivasan et al. (2002) found a very interesting
466 phenomenon: after heating treatment (121 °C for 15 min), the stability ratings of
467 heated emulsions were higher than for unheated systems. In fact, at high temperatures,
468 the molecular structure of the protein will fully unfold, and all hydrophobic residues
469 will enter the oil phase, making the droplets less likely to aggregate. However, it was
470 reported that adsorbed CAS molecules are more susceptible to thermally induced

471 degradation than unadsorbed ones in solution (Liang, Gillies, et al., 2017). This
472 difference has been attributed to protein structure and conformational differences
473 between adsorbed and unadsorbed caseinate. In some cases, especially when the final
474 product is a gelatinous system (such as the formation of a gel matrix for casein
475 emulsions), thermally induced emulsion destabilization is ideal (Silva et al., 2019).

476 **4.6. Effect of oxidation**

477 Preventing oxidation is an important consideration when designing food emulsion
478 systems since oxidation of an emulsion can greatly affect flavor, sense, and color of
479 the food products during storage. The factors that cause lipid oxidation in an emulsion
480 are very complex because they may include oxidation or electron transfer events in all
481 the different phases of the system (Jacobsen, 2016). CAS has been reported to be very
482 effective in protecting coated oils from oxidation, due to its unique iron-chelating
483 properties and ability to generate thick interfacial layers around small oil droplets
484 (McClements & Decker, 2018). For this reason, CAS has been used as an emulsifier
485 to design delivery systems for omega-3 fatty acids, as well as for real food emulsified
486 systems such as milk, yogurt, and cheese (Walker et al., 2015). Currently, a variety of
487 methods and techniques can be used to detect the oxidation process of lipids in
488 emulsions, such as peroxide value, *p*-Anisidine (*para*-anisidine) value, and
489 thiobarbituric acid reactive substances (TBARS) assays (Jacobsen, 2016). O' Dwyer
490 et al. (2013) measured the lipid hydroperoxide values and *p*-Anisidine values to
491 monitor the oxidative stability of CAS stabilized emulsions containing various oils

492 (sunflower, camelina and fish). Their results showed that CAS, as emulsifier, was able
493 to improve their oxidative stability compared to pure oils. Hebishy et al. (2017)
494 reported that higher oxidative stable emulsions were prepared by ultra-high-pressure
495 homogenized emulsions with sufficient CAS concentration (5 g/100 g). The oxidative
496 stability of O/W emulsions is also related to the size of the droplets, the interfacial
497 properties of the droplets, and the type of emulsifier. Ries et al. (2010) found that
498 CAS and whey protein stabilized emulsions with small droplet size had greater
499 oxidative stability than emulsions with large droplet size. Meanwhile, the antioxidant
500 capacity of CAS stabilized emulsion was proportional to the concentration of CAS in
501 the preparation. Higher concentrations of protein molecules can even offset the effects
502 of milk droplet size and protein type (Ries et al., 2010). This may be because higher
503 concentrations of unabsorbed casein molecules in the continuous phase inhibit free
504 radical invasion of the O/W emulsion. In general, oxidation occurs faster in O/W
505 emulsions than in bulk oils (Jacobsen, 2016), which may be due to the relatively harsh
506 processing conditions required to produce the emulsion, such as exposure to air
507 (oxygen), higher heating temperatures, or direct production through ultrasonic
508 cavitation. These processes will promote the oxidation of the emulsion. In addition,
509 the higher the unsaturated lipid content in O/W emulsion, the more it is sensitive to
510 lipid oxidation in general (Chen et al., 2022).

511 **5. General technologies for detecting and evaluating CAS emulsion stability**

512 To meet specific applications needed in food industries, detailed information on

513 the emulsion matrix and droplet properties should be obtained to understand and
514 estimate the stability of O/W emulsions. Essential emulsion characteristics such as
515 droplet size, droplet charge, morphology, and rheological behavior could be measured
516 and monitored by analytical instruments and standardized methods. These
517 characteristics could be used to represent the physicochemical, appearance, and
518 sensory properties of emulsion systems. For this reason, researchers can achieve
519 information about instability mechanisms by combining several techniques such as
520 particle size and surface charge with microscopic observations. Table 2 summarizes
521 the advantages and limitations of the various techniques most commonly used to test
522 the stability of O/W emulsions. In the following section, these techniques for
523 evaluating the stability of O/W emulsions stabilized by CAS will be discussed.

524 **5.1. Visual observation**

525 The stability of an emulsion substantially affects the quality, appearance, color,
526 and odor of food products. In turn, changes in appearance, color, and odor of
527 emulsion-based products can also be used to determine whether the emulsion is still
528 stable. In some cases, the instability of the emulsion, such as creaming or precipitation,
529 can be directly observed by the naked eye. Visual observation is probably the simplest,
530 cheapest, and fastest method of evaluating emulsion gravity separation without the
531 need for expensive and complex analytical devices. From the viewpoint of gravity
532 separation, the macroscopic changes of emulsions may have two mechanisms:
533 creaming and sedimentation. As shown in Fig. 5 (a), creaming can be observed clearly

534 as the density of the dispersed phase is lower than that of the continuous phase.
535 Conversely, sedimentation occurs when a dispersed phase with a higher density than
536 the continuous phase moves upwards and produces a thicker separation layer. In this
537 regard, the degree of precipitation or creaming generally can be assessed by observing
538 the thickness of the cream or precipitation layer with the naked eye, and then by
539 instrumental measurement and recording. However, visual observation, though
540 convenient, is not suitable for studying the mechanisms of instability phenomena such
541 as flocculation, coalescence and Ostwald maturation. In addition, the emulsion layer
542 is usually visible only when the degree of instability is quite high. Therefore, the
543 initial stage of emulsion stability usually needs to be observed accurately with the
544 help of other analytical instruments.

545 **5.2. Microscopy observation**

546 Visual observation is insufficient to study most instability mechanisms and
547 smaller droplets, such as individual droplets, flocs, fat crystals, bubbles, and ice
548 crystals. Several microscopy techniques have been established to observe these fine
549 features of emulsions. Currently, the most widely used are optical, confocal
550 fluorescent, scanning electron (SEM), transmitting electron (TEM), and atomic force
551 microscopy (AFM). These techniques provide detailed information about complex
552 systems in the form of "images" that are often relatively easy to understand.
553 Meanwhile, each technique is based on a different physicochemical principle and can
554 be used to further study the stability mechanism of emulsions with different particle

555 sizes and types.

556 Among the developed techniques, the optical microscope is the most commonly
557 used emulsion observation equipment, because it is very convenient in handling and
558 sample preparation, especially suitable for the observation of micron-scale emulsions.
559 However, the main components of emulsion droplets captured by optical microscopy
560 (the location of the oil/water phase) are often difficult to detect when using bright
561 light fields since they have similar refractive indices or colors (McClements, 2007).
562 The good news is that various methods using chemical stains have been established to
563 enhance the contrast between different components, resulting in improving the overall
564 image quality and providing spatial information about component locations (Malvehy
565 et al., 2020). Emulsion components can be pre-stained using various types of
566 chemical stains that bind to specific components of the emulsion (such as proteins,
567 polysaccharides or lipids). After homogenizing, different colors are distributed in the
568 oil phase or water phase, which therefore can be observed by using a conventional
569 optical or fluorescent microscope because some chemical dyes are fluorescent. As an
570 example, the photographs of CAS-based emulsion obtained for optical microscopy
571 (Xu et al., 2020) and fluorescent microscopy (Y. Li & Xiang, 2019) are presented in
572 Fig. 5b and 5c. Very clear droplet distribution can be observed as the oil droplets were
573 stained with Nile red fluorescent dye. Confocal Laser Scanning Microscopy (CLSM)
574 is another important innovation in microscopy for studying the interfacial structure of
575 emulsions. The device focuses a very narrow laser beam on a specific point on the
576 sample being analyzed, and the resulting laser signal is then sent through an

577 adjustable pinhole before reaching the detector to prevent defocusing. This equipment
578 allows to obtain cross-section images of emulsions with basic morphology, structure
579 and interface information (Kwok & Ngai, 2016). Álvarez Cerimedo et al. (2010) used
580 CLSM to observe CAS-stabilized emulsions as shown Fig. 5d. Their results showed
581 that the droplet distribution profiles of confocal images obtained after 24 hours were
582 consistent with the emulsion stability data obtained from Turbiscan^{LAB} stability
583 analyzer (a technique that is able to quickly and sensitively identify instability
584 mechanisms of emulsions (such as creaming, sedimentation, flocculation,
585 coalescence...) (Jiang & Charcosset, 2022)).

586 However, from the perspective of magnification factor (as low as about 1 μm),
587 the image obtained from the optical microscope cannot provide clear information
588 about the structural characteristics of the emulsion (such as particle aggregation,
589 interfacial layer thickness, etc.) (Low et al., 2020). Electron microscopy is an
590 alternative to optical one and uses electron beams with much smaller wavelengths
591 than light to help visualize material structures that are much smaller than visible light.
592 Two types of electron microscopes, scanning electron microscopy (SEM) and
593 transmission electron microscopy (TEM), are used to study the structure and
594 physicochemical properties of nanoparticles, nanoemulsions, or Pickering emulsions.
595 SEM allows observing the surface morphology of a sample by measuring the
596 secondary electrons produced when the sample is bombarded with an electron beam
597 (McClements, 2015). Typically, SEM sample preparation requires stringent conditions
598 (fixation and dehydration) because electrons are easily scattered by atoms or

599 molecules in the gas. Unfortunately, the sample preparation procedures are generally
600 not applicable to emulsions, as dehydration of emulsions usually results in droplet
601 rupture and oil leakage. The recent development of Cryo-SEM enables us to visualize
602 the microstructure of an emulsion in a frozen state. High-pressure freezing could help
603 inhibit ice crystal formation and preserve emulsion integrity. Xu N. et al. (2021)
604 observed the complete structure of CAS-coated nanoemulsions by cryo-SEM (Fig. 5e),
605 through rapid emulsion freezing in a liquid nitrogen environment. The morphology,
606 particle size and thickness of solid particles on the surface of the emulsion can be
607 clearly calculated by the corresponding software. TEM has also been widely used to
608 characterize the structure and morphology of CAS emulsions. For TEM, the electron
609 beam can pass directly through the sample to be analyzed, where the electron beam
610 transmitted to the sample is amplified and captured as an image, as shown in Fig. 5f
611 (Zhang et al., 2020). It should be noted that the droplet distribution of emulsion
612 samples can be visualized by TEM without additional sample preparation steps.
613 However, in some cases, the difference between the dispersed and continuous phases
614 of emulsion in the resulting image remains unclear. This problem can be solved by the
615 staining of emulsion (Zhai et al., 2018).

616 **5.3. Particle size analysis**

617 Under certain storage conditions, the stability of the original emulsion can be
618 studied by measuring the droplet size of the sample. Meanwhile, by monitoring
619 changes in the particle size distribution (PSD) of the emulsion system, the incidence

620 of flocculation between droplet interactions can be determined. As described by
621 Stokes's Law, the stability of an emulsion increases with the decrease of droplet size :

$$V_{Stokes} = -2gr^2(\rho_2 - \rho_1)/9\eta$$

622 where V_{Stokes} is separation rate, r is the radius of the particles, g is the action of gravity
623 acceleration, ρ_1 and ρ_2 are the density of the two phases, and η is the shear viscosity of
624 the target system. According to the droplet size, the emulsion was further divided into
625 three types, namely conventional emulsion ($d > 200\text{nm}$), nanoemulsion ($d < 200\text{nm}$)
626 and microemulsion ($d < 100\text{nm}$). As stated by Piorkowski and McClements (2014),
627 microemulsions are usually a combination of specific components (high levels of
628 synthetic surfactants) through simple mixing and they are considered to be
629 thermodynamically stable systems, so they usually have good long-term stability.
630 Both conventional emulsions and nanometer emulsions are thermodynamically
631 unstable systems and are consequently decomposed during storage by various
632 instability mechanisms. In addition to microscopy techniques, a variety of
633 commercially available analytical instruments have been developed to provide more
634 information about the size and droplet distribution of emulsions, such as light
635 scattering (static or dynamic light scattering), electrical pulse counting, and ultrasonic
636 spectrometry, which are commonly used (McClements, 2015). Fig. 6a summarizes the
637 measurement ranges of several commonly used particle size analysis techniques
638 (Shuaifeng Zhang et al., 2021). These particle size analysis techniques are suitable for
639 emulsion with different droplet sizes and concentrations and have the following

640 advantages: easy to use; fully automatic; and large amount of information about
641 droplet size provided in a short time. Even so, since different instruments operate on
642 different physical principles, they must be chosen carefully.

643 Light scattering (also called laser diffraction) particle sizing instrument is a
644 well-established technique to investigate properties of particles in solutions, as shown
645 in Fig. 6b. The basic principle is that the laser beam is irradiated on the sample, and
646 the scattered intensity is detected by the detector at a certain angle θ (Blott et al.,
647 2004). The evaluation of fluctuation is often referred to “dynamic light scattering
648 (DLS)”, and the analysis of absolute mean intensity is known as “static light
649 scattering (SLS)”. DLS based devices usually operate with a specific scattering angle
650 (fixed or variable), and then convert the flocculation strength math to PSD, which is
651 used to detect smaller particles between 3 nm to 5 μm (Shuaifeng Zhang et al., 2021).
652 SLS is assessed by measuring the angle change of scattering light intensity when laser
653 passes through emulsion medium. The droplet size of emulsions directly affects the
654 diffraction angle, and the emulsion with larger particle size will lead to a lower
655 diffraction angle, and *vice versa* (Blott et al., 2004). Meanwhile, the laser diffraction
656 systems generally use the precise input particle characteristics (such as refractive
657 index, shape, and size) to determine the particle size between 100 nm to 1000 μm
658 (Shuaifeng Zhang et al., 2021). Our previous studies have successfully used DSL and
659 laser diffraction to detect the average droplet size of CAS-based nanoemulsions and
660 conventional emulsions (Liao et al., 2021). Multiple scattering is a common problem
661 in light scattering measurements which lead to overestimation of particle size. This

662 problem can generally be solved by diluting before the measurement process.

663 The electrical pulse counting (i.e. electro-zone sensing) technique is based on
664 measurements of the change of electrical conductivity as the diluted emulsion passes
665 through a small orifice (Church et al., 2019). Since oil has a lower conductivity than
666 water, the current decreases with each drop of emulsion passing through the pores.
667 The emulsion droplet size can be calculated since larger particles move more slowly
668 and it will generate larger electrical pulses. The droplet concentration and particle size
669 distribution are determined by calculating the collected information from these
670 electrical pulses. Commercial pulse counting techniques are currently available for
671 measuring particles with diameters ranging from 0.4 μm to 1200 μm . However, this
672 measurement is limited by the size of the holes in the glass tube and may require
673 constant modification in the device to accommodate the measurement range. Brakstad
674 et al. (2018) measured 2.0 ~ 60 μm and 5.6 ~ 100 μm oil droplets by 100 μm and 280
675 μm aperture, respectively. A recent study (Fang & Nakagawa, 2020) applied tunable
676 resistive pulse sensing with micropores (2-10 μm) to analyze the particle size of CAS
677 suspensions. Notably, electrical pulse counting instruments are usually only suitable
678 for relatively low droplet concentrations (< 0.1 wt %) so that only one particle passes
679 through the hole each time. Consequently, this method is particularly appropriate for
680 particle size analysis, but is not fit for studying flocculation in the system, because
681 dilution will destroy the aggregated particles and lead to misunderstanding of sample
682 stability (Church et al., 2019).

683 Ultrasonic spectroscopy is another technique that relies on measuring ultrasonic
684 attenuation and/or changes in ultrasonic velocity as a function of frequency. The
685 attenuation level of ultrasonic velocity frequency is related to concentration and
686 particle size distribution in emulsion samples. Unlike other techniques, it is usually
687 not necessary to dilute the emulsion before measurement as electroacoustic
688 spectroscopy can be applied to high concentrated emulsions ($\leq 50\%$). Nevertheless,
689 the strength of the received signal is related to the density ratio between the particle
690 and the surrounding liquid, so the application of electroacoustic measurements in
691 some systems should be limited. The droplet size of CAS-based emulsions by DLS
692 and ultrasonic attenuation has been compared (Gülseren & Corredig, 2011). The
693 results indicated the mean diameter from DLS was larger than that measured by
694 ultrasonics. This different is attributed to the differences in the size dependence of the
695 ultrasonic and light scattering signals.

696 **5.4. Charge analysis**

697 The strength and sign of the surface charge on the dispersed droplets are derived
698 from the ionization properties of the absorbing CAS, so the surface charge is another
699 important factor for detecting emulsion stability (McClements, 2015). The droplet
700 charge of emulsion is subject to a variety of environmental factors including pH, ionic
701 strength, and chemical reactions, which may ultimately lead to changes in surface
702 charge and stability throughout the emulsion system. Electrostatic repulsions occur
703 between droplets with the same surface charge symbol, which prevents particle

704 flocculation and inhibits the propagation of most emulsion instable paths. On the
705 contrary, electrostatic attractions occur when particles with opposite charges come
706 into contact, depending on the degree of attraction, and may cause droplet instability
707 (McClements, 2015). It should be noted that when the attraction is weak, the droplets
708 tend to gather close to one another but do not physically coalesce into larger particles,
709 while when the attraction is greater, the droplets coalesce, resulting in larger droplets
710 at the expense of smaller ones. As we described above, the charge characteristic of
711 CAS is really sensitive to the pH and the presence of ions as well as other charged
712 species in the aqueous phase. Zeta potential (ζ) is the potential at the "shear plane"
713 which is a good reflection of the electrical properties of emulsion droplets because it
714 stems from the fact that ions tend to adsorb onto the droplets (McClements, 2007). In
715 our previous study, measuring the ζ -potential of the CAS-coated droplets can reflect
716 the stability of the emulsion to a certain extent (Liao et al., 2021).

717 A variety of analytical instruments have been used to measure the ζ - potential on
718 emulsion droplets and the most widely used analytical systems include
719 microelectrophoresis and electroacoustic spectroscopy. Microelectrophoresis
720 measures the electrochemical properties of the surface of a charged drop based on the
721 velocity and direction at which it moves in the emulsion when an electric field is
722 applied. In the development of recent technologies, the combination of
723 microelectrophoresis and dynamic light scattering was used to measure
724 electrophoretic mobility, from which zeta potential can then be calculated. The
725 emulsion sample is placed in the measuring cell and an electric field is applied to it

726 through a pair of electrodes. Any charged particles in the emulsion will then move
727 toward the opposite charge at different speeds, depending on their charge. Thus, the
728 symbol and magnitude of the charges on the particles can be collected and then
729 converted into particle potentials by fitting software. Similarly, samples analyzed by
730 light scattering techniques should be diluted to a lower concentration to avoid
731 multiple scattering effects. Moreover, special care should be taken when diluting
732 samples, as the electrical properties are sensitive to changes in the surrounding water
733 environment (Li et al., 2017).

734 Electroacoustic spectroscopy can also be used to determine the ζ - potential of the
735 emulsion (Gülseren & Corredig, 2011). Unlike other techniques, it is usually not
736 necessary to dilute the emulsion before measurement because electroacoustic
737 spectroscopy can be applied to high concentrated emulsions ($\leq 50\%$). The
738 measurements using electroacoustic spectroscopy can be designed in two operating
739 modes: Electro-Sonic Amplitude (ESA) and Colloid Vibration Potential (CVP). For
740 both modes, the measurements use an electrical or acoustic signal applied to the
741 emulsion and record the acoustic or electrical signal produced by the oscillating
742 particles, which are then converted to zeta potential by software fitting. Nevertheless,
743 the strength of the received signal is related to the density ratio between the particle
744 and the surrounding liquid, so the application of electroacoustic measurements in
745 some systems should be limited.

746 **5.5. Rheological properties**

747 The rheological properties of emulsions strongly influence the processing
748 behavior and shelf-life stability of liquid foods, as well as their appearance, texture,
749 taste, and flavor release. As reported by Tadros (1994), the rheological properties of
750 emulsions are related to pH, electrolyte concentration in the continuous phase, shape,
751 size distribution, internal viscosity and concentration of oil droplets, as well as their
752 ability to participate in various interactions with other components. Therefore,
753 studying the rheological properties of CAS emulsions can provide more information
754 for studying their instability mechanisms.

755 Currently, the most commonly used instruments for characterizing the rheological
756 properties of food emulsions are rheometer and viscometer. The viscometer is a very
757 convenient system to obtain viscosity information by applying a fixed rate of shear
758 force in a short period, but the information obtained is limited and cannot be used to
759 deeply study the instability mechanism and rheological properties of emulsions.
760 According to Stokes Law, as viscosity increases, O/W emulsions are generally more
761 resistant to instability caused by particle flocculation. The rheometer is another device
762 designed to apply shear deformation forces to study liquids, solids, or other
763 viscoelastic samples which are the most widely used instruments for measuring the
764 rheological properties of fluids (Tavares et al., 2022). It can provide detailed
765 information on viscosity, yield stress, elastic modulus, and fracture behavior of
766 emulsion systems by controlled-stress and controlled-strain modes. A typical method
767 for measuring rheological properties of emulsions is to measure the system's
768 resistance to applied stresses, such as rotary or oscillating stresses, where stress can

769 cause emulsion system deformation (Tavares et al., 2022). Briefly, the greater the
770 deformation resistance, the higher the viscosity of the system, and the linearity of the
771 deformation depends on the interactions between its components. Sosa-Herrera et al.
772 (2008) studied the relationship between rheological properties of CAS stabilized
773 emulsions (30 wt% sunflower oil) and the physicochemical characteristics of the
774 water phase. They found that the addition of gellan gum into emulsion can help to
775 prevent both flocculation and creaming, as the rheological behavior strongly increased.
776 This is the fact that the polysaccharides act as filler particles between the oil droplets
777 and the casein aggregates. A recent study also reported that the presence of
778 polysaccharides (inulin and konjac glucomannan) has the potential to modulate the
779 stability and rheological properties of CAS-based emulsions (Xu et al., 2020).

780 **6. Strategies to improve the stability of CAS stabilized emulsions**

781 CAS stabilized emulsions are considered excellent systems for providing
782 protection and transportation of nutrients in the food industry, but instability under
783 certain conditions still limits their further applications. For example, at pH values
784 close to their pI, the charge of casein proteins adsorbed at the oil-water interface is
785 gradually lost, and the thickness of the adsorbed layer becomes thinner as the “loops”
786 and “tails” change, resulting in droplet instability. Based on the characteristics of CAS
787 stable emulsions, this protein can be used in combination with other emulsifiers to
788 deal with these unstable conditions, ensuring effective control of the emulsion,
789 thereby reliably producing products with a consistent appearance, uniform consistency,

790 and satisfactory shelf life. In this section, the main methods that can be used to
791 improve CAS stabilized emulsion properties will be discussed and some recent cases
792 are summarized in Table 3.

793 **6.1. Optimize emulsion formulation**

794 Firstly, optimizing the process of producing the emulsification is one of the most
795 and safest ways to improve emulsion stability. During this process, several factors
796 such as protein concentration, homogenization conditions, protein solubilization, ionic
797 strength, and pH conditions can be optimized at the laboratory level to achieve better
798 emulsion stability. At the same time, optimization of the formulation, selection of the
799 right type of emulsifying equipment, addition of antioxidants, and optimization of
800 packaging and storage conditions will also contribute to the stability of emulsions and
801 prolong the shelf life of food products.

802 Hebishy et al. (2017) studied the effects of protein concentration and pressure on
803 the stability of CAS stable emulsions and demonstrated that high-pressure treatment
804 with sufficient CAS content can produce nanoscale emulsions with unimodal peaks
805 and high physical properties. Compared with emulsions produced by conventional
806 homogenization, oxidation stability of emulsion produced by high-pressure
807 homogenization was improved. In another study by O' Dwyer et al. (2013), the effects
808 of CAS concentration on the emulsion stability of O/W emulsions were examined.
809 The authors reported that lipid hydroperoxide and p-Anisidine values of emulsions
810 generally decreased as CAS concentration increased. Erxleben et al. (2021)

811 investigated the effect of ethanol on the stability of sodium caseinate stabilized
812 emulsions and they observed a slower destabilization mechanism for these emulsions
813 when ethanol was added after the processing step.

814 **6.2. Non-covalent bond**

815 Compared with emulsions prepared with CAS as the sole emulsifying agent,
816 emulsions prepared from mixed emulsifiers (Cuomo et al., 2019; McClements &
817 Jafari, 2018) and protein-polysaccharide complexes (Cheng et al., 2020; Cheng &
818 McClements, 2016) have been reported with increased resistance to environmental
819 stresses such as pH, ionic strength, and temperature. This is because CAS can
820 non-covalently bond with other biopolymers on the droplet surface, such as
821 electrostatic interactions, hydrophobic bonds, hydrogen bonds, and van der Waals
822 interactions, among which electrostatic interactions are widely used.

823 A recent review (McClements & Jafari, 2018) detailed the many advantages of
824 using mixed emulsifiers in improving emulsion formation, stability and performance.
825 Generally, proteins, small molecule surfactants and phospholipids are the most used
826 emulsifiers in food applications. Ji et al. (Ji et al., 2015) used CAS and soy protein
827 isolate (SPI) as natural emulsifier to successfully develop a enteral nutrition system
828 with enhanced stability. The results showed that the flexible protein CAS and the rigid
829 globular protein SPI were adsorbed on the oil-water interface. Another study
830 (Yerramilli et al., 2017) also showed that by using CAS and pea protein, the mixed
831 protein based nanoemulsion was more stable than individual ones. They confirmed

832 the presence of both pea protein and casein at the interface by SDS-PAGE. Perugini et
833 al. (2018) used a non-ionic surfactant (Tween 20) in combination with CAS as
834 blending emulsifiers to prepare nanoemulsions and their results showed that the
835 addition of Tween 20 effectively enhanced the stability of the CAS-based emulsion
836 under acidic conditions. Another study (Cuomo et al., 2019) also used a blend of CAS
837 and Tween 20 to prepared O/W nanoemulsions. The results showed that *in vitro*
838 simulated digestion process, the mixed emulsifier system provided higher amounts of
839 lipophilic compounds and lower fat intake compared to the sodium
840 caseinate-stabilized nanoemulsion. In addition to proteins and small molecule
841 surfactants, soy lecithin (Chung et al., 2019; Wu et al., 2022; Xue et al., 2015) are also
842 used as a co-emulsifier with sodium caseinate in preparing food emulsions. A study by
843 Xue et al. (2015) reported that the combination of CAS and soy lecithin facilitate the
844 formation of transparent and stable thyme oil nanoemulsions when compared with
845 treatments applying the two emulsifiers individually. Nonetheless, there may be
846 adsorption competition between the different emulsifier components, which may
847 adversely affect emulsion formation and stability (McClements & Jafari, 2018).

848 Unlike other emulsifiers, polysaccharides are generally not used as the only
849 emulsifiers in food emulsions because typical hydrophilic polysaccharide molecules
850 are nearly surface-inactive unless they contain protein moieties responsible for their
851 emulsifying ability, such as gum arabic (Ishii et al., 2018). However, polysaccharides
852 are widely used as stabilizers in emulsion preparation, usually in combination with
853 proteins, which can effectively improve the viscosity, texture, and appearance of food

854 products as well as for introducing some nutritional components. As Ghosh and
855 Bandyopadhyay (2012) described, the relative thickness of the liquid films between
856 two approaching droplets lies in the order of hydrocolloids (5–10 nm) > proteins (1–5
857 nm) > surfactants (0.5–1 nm). Thus, the stability is expected to be higher when the
858 emulsion is stabilized by protein-polysaccharide complexes or conjugates compared
859 to the same systems stabilized by protein or surfactants alone. Effective binding of
860 CAS and polysaccharides can be achieved by utilizing electrostatic attractions
861 (Non-covalent binding) through complexation at acidic pH (Artiga-Artigas et al.,
862 2020; W. Xu et al., 2020) or by covalently binding polysaccharides (Consoli et al.,
863 2018; Sato et al., 2015).

864 The prerequisite for the formation of electrostatic complexes is naturally the
865 presence of opposite charges on the different polymers. Our previous study (Wang et
866 al., 2019) has investigated the formation of CAS and low methoxyl pectin (LMP)
867 complexes at different pH values (Fig. 7). The charge density of CAS is strongly
868 dependent on the suspension pH, which can induce the formation of complexes with
869 LMP through strong electrical interactions at pH 3. The complexes formed by CAS
870 and anionic polysaccharides could be used to prepare emulsions containing oil-soluble
871 active molecules. The effect of complexation on CAS emulsion has been reported in
872 many literatures by either one or two-step complex coacervation techniques. As
873 shown in Fig. 8a, the one-step method uses a mixture of two biopolymers to form a
874 complex coacervate before preparing the emulsion, while the two-step method (Fig.
875 8b) uses only CAS to form the emulsion and then adds the polysaccharide as a second

876 layer. Yesiltas et al. (2018) used CAS and commercial sodium alginate as combined
877 emulsifiers to prepare fish O/W emulsions. Their results indicated that mixed
878 emulsifiers performed better in terms of physical stability compared to emulsions
879 produced with only CAS. Cheng et al. (2020) also used the one-step method to
880 prepare emulsions with CAS/ pectin or gum Arabic. Both polysaccharides exhibited
881 the ability to enhance the accumulation and stability of resveratrol at the oil-water
882 interface, while also increasing the absolute value of the droplet zeta potential.
883 However, one-step methods tend to promote droplet flocculation or coalescence in the
884 process, and aggregation is generally irreversible (Burgos-Díaz et al., 2016). Liu et al.
885 (2012) prepared multilayer emulsions using carboxymethyl cellulose (CMC) and CAS
886 by the two-step method that can result in more uniform droplets. Firstly, CAS
887 emulsion containing CMC in an aqueous phase was prepared under neutral pH, in
888 which two biopolymers were negatively charged, and then the pH was adjusted to
889 acid values. A complex interface layer can be formed at a pH around the pI of proteins,
890 consisting of a first layer generated by the direct adsorption of CAS molecules on the
891 exposed interfaces, and a second layer composed of CMC molecules interacting with
892 CAS molecules through attractive electrostatic interactions. Emulsions containing
893 drops prepared by CAS/CMC exhibited fairly stability since polysaccharide outer
894 layers increase the net surface charge and create steric hindrance (Liu et al., 2012). A
895 recent study compared the effect of different anionic polysaccharides on the stability
896 of CAS-based emulsion by the two-step method (Shi et al., 2023). All four
897 polysaccharides tested in this study can adsorb to the surface of CAS-based lipids

898 when the pH of the mixture was reduced from neutral to 5, 4, and 3, and enhanced the
899 performance of the multilayer emulsion. In particular, multilayer emulsions prepared
900 from κ -carrageenan could accelerate digestion in the gastrointestinal tract.

901 Furthermore, it was also reported that the presence of free polysaccharides can
902 improve the salt stability of protein-stabilized emulsion even without interactions with
903 proteins (Qiu et al., 2015). This result was attributed to the fact that the unadsorbed
904 xanthan gum increased the viscosity of the emulsion and formed a thickening network
905 around the protein, which reduces the particle movement rate and thus improves the
906 emulsion stability. However, improving the stability of CAS-stabilized emulsions by
907 electrostatic complexing (sequential adsorption or mixed emulsification) still suffers
908 from a major disadvantage: improvements may be limited to narrow pH or ionic
909 strength ranges.

910 **6.3. Covalent bond (Conjugation)**

911 The chemical modifications of proteins, such as acetylation, deamidation,
912 succinylation and glycation, is another considering modification method to improve
913 physicochemical and functional properties of protein stabilized emulsions. In food
914 industries, the most common protein-polysaccharide conjugation method is the
915 Maillard reaction, which is a series of non-enzymatic browning reactions that occur
916 naturally between reducing sugars and amino acids (Evans et al., 2013). Unlike other
917 protein modification methods, Maillard reaction is usually triggered by temperature
918 elevation without other chemical reagents. In recent years, protein-polysaccharide

919 conjugates as emulsifiers provided more diverse possibilities for the improvement of
920 emulsifying, stabilizing, solubility and thermal stability as well as better stability
921 against pH variations. Casein and sodium caseinate have been reported to bound to a
922 variety of galactose, lactose, and dextran under controlled conditions and these
923 glycoconjugates showed improved emulsifying properties compared to natural CAS
924 (Barbosa et al., 2019; Consoli et al., 2018; Liu et al., 2018). In fact, the open and
925 hydrated random structure in caseins makes them more likely than globular proteins
926 to benefit from glycosylation *via* the Maillard reaction (Consoli et al., 2018).
927 Furthermore, as mentioned above, CAS has higher stability to temperature, which is
928 required for glycosylation. A recent study formulated the Maillard conjugates
929 biopolymers by sodium caseinate-locust bean gum (Barbosa et al., 2019). These
930 conjugates appear to be a promising alternative of emulsifiers to address the
931 application deficiencies of sodium caseinate in acidic situations. Furthermore, the
932 emulsions prepared from the conjugates showed a reduction in droplet size, which can
933 be attributed to the formation of the conjugates that promotes steric repulsion between
934 droplets and avoids attractive droplet interactions. Similar explanations was also
935 reported by the study of CAS-sugar beet pectin conjugates (Juyang & Wolf, 2021).
936 Improved antioxidant stability and creaming stability of emulsions has been also
937 reported when CAS Maillard reaction products were applied as emulsifiers (Consoli
938 et al., 2018; Lee et al., 2015). Li et al. (2017) investigated the effect of pH variation
939 on the emulsion stability of CAS-lactose conjugates formed *via* the Maillard reaction
940 for better oil encapsulation in spray-dried powder. They found that conjugates

941 formulated at pH 11, exhibited better emulsifying properties and stability, and
942 enhanced conjugate adsorption on oil droplets. This was due to the change of the
943 hydrophilic/hydrophobic balance of emulsion systems and the resulted strong steric
944 repulsions allowing to slow droplet flocculation. Finally, although Maillard reaction
945 products can demonstrate these improved physicochemical properties of emulsions,
946 rigorous safety testing should be performed before using these products as ingredients,
947 as Maillard reaction might produce advanced glycation end-products (AGEs), causing
948 side-effects in healthy individuals (Wei et al., 2018).

949 In addition, modifying the protein by breaking down its structure has been
950 investigated as an alternative strategy to improve the emulsification properties, which
951 can be done enzymatically (Sato et al., 2015) or by heating treatments (Liang, Gillies,
952 et al., 2017), where controlled hydrolysis can increase the solubility, emulsification,
953 and foaming properties of protein emulsifiers.

954 **7. Conclusions**

955 CAS provides interesting emulsifying properties that allow it to meet current
956 consumer demands for the stabilization of food emulsions, but instability under some
957 specific conditions limits its applications. Therefore, there is an urgent need to better
958 understand the effects of different environmental and processing conditions on
959 emulsion stability, and how to improve the stability of CAS-formed food emulsions.
960 This review presented the structural properties of CAS and its emulsifying ability,
961 summarized the recent applications of CAS for stabilizing food emulsions. From our

962 results and others discussed in literature, it is clear that the stability of emulsions is
963 strongly affected by pH, protein concentration, ionic strength, heating process and
964 oxidation. The instability mechanisms occurred in CAS-stabilized emulsions can be
965 recorded and tracked by some instruments and methods, such as microscopy
966 observation, droplet size distribution, droplet charge, and rheological measurements.
967 Those technologies have advantages and disadvantages and provide different insights
968 into the destabilization mechanisms. According to the general factors that control the
969 stability of CAS stabilized emulsions, some general strategies for preventing
970 instability are pointed out: using enough protein emulsifier to fully saturate the
971 interface during emulsification; avoiding any large excess of non-adsorbed protein ;
972 working away from pH values around the protein's pI ; keeping the ionic strength as
973 low as possible; and using high energy methods in order to reduce particle size. In
974 addition to the above proposals, a reliable strategy for preventing instability in CAS
975 stabilized emulsions can be improved by binding proteins to other biopolymers,
976 especially polysaccharides by using complexation or conjugation. In summary, this
977 review can serve as a template for researchers to understand the fundamental
978 properties of CAS-stabilized emulsions and study their stabilization methods.

979 **ACKNOWLEDGEMENTS**

980 Wei Liao greatly thanks Chinese Scholarship Council for support (No.
981 201807565014).

982 **CONFLICTS OF INTEREST**

983 The authors declare that there is no conflict of interest that could be perceived as
984 prejudicing the impartiality of the research reported.

985 **Reference**

- 986 Álvarez Cerimedo, M. S., Iriart, C. H., Candal, R. J. & Herrera, M. L. (2010). Stability of
987 emulsions formulated with high concentrations of sodium caseinate and trehalose.
988 *Food Research International*, 43(5), 1482–1493.
989 <https://doi.org/10.1016/j.foodres.2010.04.008>
- 990 Amine, C., Dreher, J., Helgason, T. & Tadros, T. (2014). Investigation of emulsifying
991 properties and emulsion stability of plant and milk proteins using interfacial tension
992 and interfacial elasticity. *Food Hydrocolloids*, 39, 180–186.
- 993 Artiga-Artigas, M., Reichert, C., Salvia-Trujillo, L., Zeeb, B., Martín-Belloso, O. & Weiss, J.
994 (2020). Protein/Polysaccharide complexes to stabilize decane-in-water
995 nanoemulsions. *Food Biophysics*, 15(3), 335–345.
- 996 Barbosa, J. M., Ushikubo, F. Y., de Figueiredo Furtado, G. & Cunha, R. L. (2019). Oil in water
997 emulsions stabilized by maillard conjugates of sodium caseinate-locust bean gum.
998 *Journal of Dispersion Science and Technology*, 40(5), 634–645.
- 999 Bhat, M. Y., Dar, T. A. & Singh, L. R. (2016). Casein proteins: structural and functional aspects.
1000 *Milk Proteins—from Structure to Biological Properties and Health Aspects*, 1–17.
- 1001 Blott, S. J., Croft, D. J., Pye, K., Saye, S. E. & Wilson, H. E. (2004). Particle size analysis by
1002 laser diffraction. *Geological Society, London, Special Publications*, 232(1), 63–73.
- 1003 Brakstad, O. G., Farooq, U., Ribicic, D. & Netzer, R. (2018). Dispersibility and
1004 biotransformation of oils with different properties in seawater. *Chemosphere*, 191,
1005 44–53.
- 1006 Burgos-Díaz, C., Wandersleben, T., Marqués, A. M. & Rubilar, M. (2016). Multilayer
1007 emulsions stabilized by vegetable proteins and polysaccharides. *Current Opinion in*
1008 *Colloid & Interface Science*, 25, 51–57. <https://doi.org/10.1016/j.cocis.2016.06.014>
- 1009 Carpenter, J. & Saharan, V. K. (2017). Ultrasonic assisted formation and stability of mustard
1010 oil in water nanoemulsion: Effect of process parameters and their optimization.
1011 *Ultrasonics Sonochemistry*, 35, 422–430.
- 1012 Cerimedo, M. S. Á., Iriart, C. H., Candal, R. J. & Herrera, M. L. (2010). Stability of emulsions
1013 formulated with high concentrations of sodium caseinate and trehalose. *Food*
1014 *Research International*, 43(5), 1482–1493.
- 1015 Chen, W., Liang, G., Li, X., He, Z., Zeng, M., Gao, D., Qin, F., Goff, H. D. & Chen, J. (2019).
1016 Effects of soy proteins and hydrolysates on fat globule coalescence and meltdown
1017 properties of ice cream. *Food Hydrocolloids*, 94, 279–286.
- 1018 Chen, X.-W., Hu, Q.-H., Li, X.-X. & Ma, C.-G. (2022). Systematic comparison of structural
1019 and lipid oxidation in oil- in- water and water- in- oil biphasic emulgels: effect of
1020 emulsion type, oil- phase composition, and oil fraction. *Journal of the Science of*
1021 *Food and Agriculture*.
- 1022 Cheng, H., Fan, Q., Liu, T. & Liang, L. (2020). Co-encapsulation of α -tocopherol and

- 1023 resveratrol in oil-in-water emulsion stabilized by sodium caseinate: Impact of
1024 polysaccharide on the stability and bioaccessibility. *Journal of Food Engineering*, 264,
1025 109685.
- 1026 Cheng, W. & McClements, D. J. (2016). Biopolymer-stabilized conjugated linoleic acid (CLA)
1027 oil-in-water emulsions: Impact of electrostatic interactions on formation and stability
1028 of pectin-caseinate-coated lipid droplets. *Colloids and Surfaces A: Physicochemical
1029 and Engineering Aspects*, 511, 172–179.
- 1030 Chung, C., Koo, C. K. W., Sher, A., Fu, J.-T. R., Rousset, P. & McClements, D. J. (2019).
1031 Modulation of caseinate-stabilized model oil-in-water emulsions with soy lecithin.
1032 *Food Research International*, 122, 361–370.
1033 <https://doi.org/10.1016/j.foodres.2019.04.032>
- 1034 Church, J., Lundin, J. G., Diaz, D., Mercado, D., Willner, M. R., Lee, W. H. & Paynter, D. M.
1035 (2019). Identification and characterization of bilgewater emulsions. *Science of The
1036 Total Environment*, 691, 981–995. <https://doi.org/10.1016/j.scitotenv.2019.06.510>
- 1037 Consoli, L., Dias, R. A., Rabelo, R. S., Furtado, G. F., Sussulini, A., Cunha, R. L. & Hubinger,
1038 M. D. (2018). Sodium caseinate-corn starch hydrolysates conjugates obtained through
1039 the Maillard reaction as stabilizing agents in resveratrol-loaded emulsions. *Food
1040 Hydrocolloids*, 84, 458–472.
- 1041 Costa, C., Medronho, B., Filipe, A., Mira, I., Lindman, B., Edlund, H. & Norgren, M. (2019).
1042 Emulsion formation and stabilization by biomolecules: The leading role of cellulose.
1043 *Polymers*, 11(10), 1570.
- 1044 Csáki, K. F. & Sebestyén, É. (2019). Who will carry out the tests that would be necessary for
1045 proper safety evaluation of food emulsifiers? *Food Science and Human Wellness*, 8(2),
1046 126–135.
- 1047 Cuomo, F., Perugini, L., Marconi, E., Messia, M. C. & Lopez, F. (2019). Enhanced curcumin
1048 bioavailability through nonionic surfactant/caseinate mixed nanoemulsions. *Journal
1049 of Food Science*, 84(9), 2584–2591.
- 1050 Dalgleish, D. G. (1990). The conformations of proteins on solid/water interfaces—caseins and
1051 phosvitin on polystyrene latices. *Colloids and Surfaces*, 46(2), 141–155.
- 1052 Dalgleish, D. G. (1996). Conformations and structures of milk proteins adsorbed to oil-water
1053 interfaces. *Food Research International*, 29(5–6), 541–547.
- 1054 Dammak, I., Sobral, P. J. do A., Aquino, A., Neves, M. A. das & Conte- Junior, C. A. (2020).
1055 Nanoemulsions: Using emulsifiers from natural sources replacing synthetic ones—A
1056 review. *Comprehensive Reviews in Food Science and Food Safety*, 19(5), 2721–2746.
- 1057 de Figueiredo Furtado, G., Michelon, M., de Oliveira, D. R. B. & da Cunha, R. L. (2016).
1058 Heteroaggregation of lipid droplets coated with sodium caseinate and lactoferrin.
1059 *Food Research International*, 89, 309–319.
1060 <https://doi.org/10.1016/j.foodres.2016.08.024>
- 1061 Dickinson, E. (1989). Surface and emulsifying properties of caseins. *Journal of Dairy*

- 1062 *Research*, 56(3), 471–477.
- 1063 Dickinson, E. (1994). Protein-stabilized emulsions. In *Water in foods* (pp. 59–74). Elsevier.
- 1064 Dickinson, E. (1997). Aggregation processes, particle interactions, and colloidal structure.
1065 *SPECIAL PUBLICATION-ROYAL SOCIETY OF CHEMISTRY*, 192, 107–126.
- 1066 Dickinson, E. (1999). Caseins in emulsions: interfacial properties and interactions.
1067 *International Dairy Journal*, 9(3–6), 305–312.
- 1068 Dickinson, E. (2010). Food emulsions and foams: Stabilization by particles. *Current Opinion*
1069 *in Colloid & Interface Science*, 15(1–2), 40–49.
- 1070 Dickinson, E. (2019). Strategies to control and inhibit the flocculation of protein-stabilized
1071 oil-in-water emulsions. *Food Hydrocolloids*, 96, 209–223.
- 1072 Dickinson, E. & Davies, E. (1999). Influence of ionic calcium on stability of sodium caseinate
1073 emulsions. *Colloids and Surfaces B: Biointerfaces*, 12(3), 203–212.
1074 [https://doi.org/10.1016/S0927-7765\(98\)00075-7](https://doi.org/10.1016/S0927-7765(98)00075-7)
- 1075 Dickinson, E., Golding, M. & Povey, M. J. (1997). Creaming and flocculation of oil-in-water
1076 emulsions containing sodium caseinate. *Journal of Colloid and Interface Science*,
1077 185(2), 515–529.
- 1078 Dickinson, E., Rolfe, S. E. & Dalgleish, D. G. (1988). Competitive adsorption of α 1-casein
1079 and β -casein in oil-in-water emulsions. *Food Hydrocolloids*, 2(5), 397–405.
1080 [https://doi.org/10.1016/S0268-005X\(88\)80004-3](https://doi.org/10.1016/S0268-005X(88)80004-3)
- 1081 Ebert, S., Koo, C. K., Weiss, J. & McClements, D. J. (2017). Continuous production of
1082 core-shell protein nanoparticles by antisolvent precipitation using dual-channel
1083 microfluidization: Caseinate-coated zein nanoparticles. *Food Research International*,
1084 92, 48–55.
- 1085 Erxleben, S. W. J., Pelan, E. & Wolf, B. (2021). Effect of ethanol on the stability of sodium
1086 caseinate stabilised emulsions. *Food Hydrocolloids*, 121, 107058.
1087 <https://doi.org/10.1016/j.foodhyd.2021.107058>
- 1088 Euston, S. R. & Goff, H. D. (2019). Emulsifiers in dairy products and dairy substitutes. In *Food*
1089 *emulsifiers and their applications* (pp. 217–254). Springer.
- 1090 Evans, M., Ratcliffe, I. & Williams, P. A. (2013). Emulsion stabilisation using
1091 polysaccharide–protein complexes. *Current Opinion in Colloid & Interface Science*,
1092 18(4), 272–282.
- 1093 Fang, B. & Nakagawa, K. (2020). Modification of casein aggregate microstructures under
1094 frozen conditions: A study using tunable resistive pulse sensing. *Food Hydrocolloids*,
1095 98, 105259. <https://doi.org/10.1016/j.foodhyd.2019.105259>
- 1096 Fredrick, E., Walstra, P. & Dewettinck, K. (2010). Factors governing partial coalescence in
1097 oil-in-water emulsions. *Advances in Colloid and Interface Science*, 153(1), 30–42.
1098 <https://doi.org/10.1016/j.cis.2009.10.003>
- 1099 Ghosh, A. K. & Bandyopadhyay, P. (2012). Polysaccharide-protein interactions and their

- 1100 relevance in food colloids. *The Complex World of Polysaccharides*, 14, 395–406.
- 1101 Gülseren, İ. & Corredig, M. (2011). Changes in Colloidal Properties of Oil in Water Emulsions
1102 Stabilized with Sodium Caseinate Observed by Acoustic and Electroacoustic
1103 Spectroscopy. *Food Biophysics*, 6(4), 534.
1104 <https://doi.org/10.1007/s11483-011-9236-x>
- 1105 Hebishy, E., Buffa, M., Juan, B., Blasco-Moreno, A. & Trujillo, A.-J. (2017). Ultra
1106 high-pressure homogenized emulsions stabilized by sodium caseinate: Effects of
1107 protein concentration and pressure on emulsions structure and stability. *LWT - Food
1108 Science and Technology*, 76, 57–66. <https://doi.org/10.1016/j.lwt.2016.10.045>
- 1109 Ishii, T., Matsumiya, K., Aoshima, M. & Matsumura, Y. (2018). Microgelation imparts
1110 emulsifying ability to surface-inactive polysaccharides—bottom-up vs top-down
1111 approaches. *Npj Science of Food*, 2(1), 1–12.
- 1112 Jacobsen, C. (2016). Chapter 8 - Oxidative Stability and Shelf Life of Food Emulsions. In M.
1113 Hu & C. Jacobsen (Eds.), *Oxidative Stability and Shelf Life of Foods Containing Oils
1114 and Fats* (pp. 287–312). AOCS Press.
1115 <https://doi.org/10.1016/B978-1-63067-056-6.00008-2>
- 1116 Ji, J., Zhang, J., Chen, J., Wang, Y., Dong, N., Hu, C., Chen, H., Li, G., Pan, X. & Wu, C.
1117 (2015). Preparation and stabilization of emulsions stabilized by mixed sodium
1118 caseinate and soy protein isolate. *Food Hydrocolloids*, 51, 156–165.
1119 <https://doi.org/10.1016/j.foodhyd.2015.05.013>
- 1120 Jiang, T. & Charcosset, C. (2022). Encapsulation of curcumin within oil-in-water emulsions
1121 prepared by premix membrane emulsification: Impact of droplet size and carrier oil on
1122 the chemical stability of curcumin. *Food Research International*, 157, 111475.
1123 <https://doi.org/10.1016/j.foodres.2022.111475>
- 1124 Jiao, J. & Burgess, D. J. (2003). Ostwald ripening of water-in-hydrocarbon emulsions. *Journal
1125 of Colloid and Interface Science*, 264(2), 509–516.
- 1126 Jourdain, L., Leser, M. E., Schmitt, C., Michel, M. & Dickinson, E. (2008). Stability of
1127 emulsions containing sodium caseinate and dextran sulfate: Relationship to
1128 complexation in solution. *Food Hydrocolloids*, 22(4), 647–659.
1129 <https://doi.org/10.1016/j.foodhyd.2007.01.007>
- 1130 Juyang, Z. & Wolf, B. (2021). Impact of type of sugar beet pectin–sodium caseinate interaction
1131 on emulsion properties at pH 4.5 and pH 7. *Foods*, 10(3), 631.
- 1132 Kim, W., Wang, Y. & Selomulya, C. (2020). Dairy and plant proteins as natural food
1133 emulsifiers. *Trends in Food Science & Technology*, 105, 261–272.
1134 <https://doi.org/10.1016/j.tifs.2020.09.012>
- 1135 Kwok, M. & Ngai, T. (2016). A confocal microscopy study of micron-sized poly
1136 (N-isopropylacrylamide) microgel particles at the oil–water interface and anisotropic
1137 flattening of highly swollen microgel. *Journal of Colloid and Interface Science*, 461,
1138 409–418.

- 1139 Lamothe, S., Desroches, V. & Britten, M. (2019). Effect of milk proteins and food-grade
1140 surfactants on oxidation of linseed oil-in-water emulsions during in vitro digestion.
1141 *Food Chemistry*, 294, 130–137. <https://doi.org/10.1016/j.foodchem.2019.04.107>
- 1142 Lee, Y.-Y., Tang, T.-K., Tan, C.-P., Alitheen, N. B. M., Phuah, E.-T., Karim, N. A. A. & Lai,
1143 O.-M. (2015). Entrapment of palm-based medium-and long-chain triacylglycerol via
1144 maillard reaction products. *Food and Bioprocess Technology*, 8(7), 1571–1582.
- 1145 Let, M. B., Jacobsen, C., Sørensen, A.-D. M. & Meyer, A. S. (2007). Homogenization
1146 conditions affect the oxidative stability of fish oil enriched milk emulsions: lipid
1147 oxidation. *Journal of Agricultural and Food Chemistry*, 55(5), 1773–1780.
- 1148 Li, Ke, Li, Y., Liu, C.-L., Fu, L., Zhao, Y.-Y., Zhang, Y.-Y., Wang, Y.-T. & Bai, Y.-H. (2020).
1149 Improving interfacial properties, structure and oxidative stability by ultrasound
1150 application to sodium caseinate prepared pre-emulsified soybean oil. *LWT*, 131,
1151 109755. <https://doi.org/10.1016/j.lwt.2020.109755>
- 1152 Li, Krystel, Woo, M. W., Patel, H. & Selomulya, C. (2017). Enhancing the stability of
1153 protein-polysaccharides emulsions via Maillard reaction for better oil encapsulation in
1154 spray-dried powders by pH adjustment. *Food Hydrocolloids*, 69, 121–131.
- 1155 Li, N. & Zhong, Q. (2022). Impacts of preparation conditions on the structure and emulsifying
1156 properties of casein-alginate conjugates produced by transacylation reaction.
1157 *International Journal of Biological Macromolecules*, 201, 242–253.
1158 <https://doi.org/10.1016/j.ijbiomac.2021.12.169>
- 1159 Li, Y. & Xiang, D. (2019). Stability of oil-in-water emulsions performed by ultrasound power
1160 or high-pressure homogenization. *Plos One*, 14(3), e0213189.
- 1161 Liang, Y., Gillies, G., Matia-Merino, L., Ye, A., Patel, H. & Golding, M. (2017). Structure and
1162 stability of sodium-caseinate-stabilized oil-in-water emulsions as influenced by heat
1163 treatment. *Food Hydrocolloids*, 66, 307–317.
1164 <https://doi.org/10.1016/j.foodhyd.2016.11.041>
- 1165 Liang, Y., Gillies, G., Patel, H., Matia-Merino, L., Ye, A. & Golding, M. (2014). Physical
1166 stability, microstructure and rheology of sodium-caseinate-stabilized emulsions as
1167 influenced by protein concentration and non-adsorbing polysaccharides. *Food*
1168 *Hydrocolloids*, 36, 245–255. <https://doi.org/10.1016/j.foodhyd.2013.10.006>
- 1169 Liang, Y., Matia-Merino, L., Gillies, G., Patel, H., Ye, A. & Golding, M. (2017). The heat
1170 stability of milk protein-stabilized oil-in-water emulsions: A review. *Current Opinion*
1171 *in Colloid & Interface Science*, 28, 63–73.
- 1172 Liao, W., Badri, W., Dumas, E., Ghnimi, S., Elaissari, A., Saurel, R. & Gharsallaoui, A. (2021).
1173 Nanoencapsulation of Essential Oils as Natural Food Antimicrobial Agents: An
1174 Overview. *Applied Sciences*, 11(13), 5778.
- 1175 Liao, W., Dumas, E., Ghnimi, S., Elaissari, A. & Gharsallaoui, A. (2021). Effect of emulsifier
1176 and droplet size on the antibacterial properties of emulsions and emulsion- based
1177 films containing essential oil compounds. *Journal of Food Processing and*
1178 *Preservation*, e16072.

- 1179 Liao, W., Elaissari, A., Ghnimi, S., Dumas, E. & Gharsallaoui, A. (2022). Effect of pectin on
 1180 the properties of nanoemulsions stabilized by sodium caseinate at neutral pH.
 1181 *International Journal of Biological Macromolecules*, 209, 1858–1866.
- 1182 Liao, W., Gharsallaoui, A., Dumas, E., Ghnimi, S. & Elaissari, A. (2021). Effect of carrier oil
 1183 on the properties of sodium caseinate stabilized O/W nanoemulsions containing
 1184 Trans-cinnamaldehyde. *LWT*, 146, 111655.
- 1185 Liu, J., Liu, W., Salt, L. J., Ridout, M. J., Ding, Y. & Wilde, P. J. (2018). Fish oil emulsions
 1186 stabilized with caseinate glycosylated by dextran: Physicochemical stability and
 1187 gastrointestinal fate. *Journal of Agricultural and Food Chemistry*, 67(1), 452–462.
- 1188 Liu, L., Zhao, Q., Liu, T., Kong, J., Long, Z. & Zhao, M. (2012). Sodium
 1189 caseinate/carboxymethylcellulose interactions at oil–water interface: Relationship to
 1190 emulsion stability. *Food Chemistry*, 132(4), 1822–1829.
- 1191 Loi, C. C., Eyres, G. T. & Birch, E. J. (2019). Effect of milk protein composition on
 1192 physicochemical properties, creaming stability and volatile profile of a
 1193 protein-stabilised oil-in-water emulsion. *Food Research International*, 120, 83–91.
 1194 <https://doi.org/10.1016/j.foodres.2019.02.026>
- 1195 Low, L. E., Siva, S. P., Ho, Y. K., Chan, E. S. & Tey, B. T. (2020). Recent advances of
 1196 characterization techniques for the formation, physical properties and stability of
 1197 Pickering emulsion. *Advances in Colloid and Interface Science*, 277, 102117.
- 1198 Ma, X. & Chatterton, D. E. W. (2021). Strategies to improve the physical stability of sodium
 1199 caseinate stabilized emulsions: A literature review. *Food Hydrocolloids*, 119, 106853.
 1200 <https://doi.org/10.1016/j.foodhyd.2021.106853>
- 1201 Malvehy, J., Pérez- Anker, J., Toll, A., Pigem, R., Garcia, A., Alos, L. L. & Puig, S. (2020). Ex
 1202 vivo confocal microscopy: revolution in fast pathology in dermatology. *British*
 1203 *Journal of Dermatology*, 183(6), 1011–1025.
- 1204 Mao, L., Yang, J., Xu, D., Yuan, F. & Gao, Y. (2010). Effects of homogenization models and
 1205 emulsifiers on the physicochemical properties of β -carotene nanoemulsions. *Journal*
 1206 *of Dispersion Science and Technology*, 31(7), 986–993.
- 1207 Martínez-Padilla, L. P., Sosa-Herrera, M. G. & Osnaya-Becerril, M. (2021). Effect of the
 1208 konjac glucomannan concentration on the rheological behaviour and stability of
 1209 sodium caseinate oil-in-water emulsions. *International Dairy Journal*, 117, 104993.
 1210 <https://doi.org/10.1016/j.idairyj.2021.104993>
- 1211 McClements, D. J. (2007). Critical review of techniques and methodologies for
 1212 characterization of emulsion stability. *Critical Reviews in Food Science and Nutrition*,
 1213 47(7), 611–649.
- 1214 McClements, D. J. (2015). *Food emulsions: principles, practices, and techniques*. CRC press.
- 1215 McClements, D. J. & Decker, E. (2018). Interfacial antioxidants: A review of natural and
 1216 synthetic emulsifiers and coemulsifiers that can inhibit lipid oxidation. *Journal of*
 1217 *Agricultural and Food Chemistry*, 66(1), 20–35.

- 1218 McClements, D. J. & Jafari, S. M. (2018). Improving emulsion formation, stability and
 1219 performance using mixed emulsifiers: A review. *Advances in Colloid and Interface*
 1220 *Science*, 251, 55–79.
- 1221 McSweeney, S. L., Mulvihill, D. M. & O’Callaghan, D. M. (2004). The influence of pH on the
 1222 heat-induced aggregation of model milk protein ingredient systems and model infant
 1223 formula emulsions stabilized by milk protein ingredients. *Food Hydrocolloids*, 18(1),
 1224 109–125.
- 1225 Nagaraju, P. G., P., S., Dubey, T., Chinnathambi, S., C. G., P. P. & Rao, P. J. (2021). Influence of
 1226 sodium caseinate, maltodextrin, pectin and their Maillard conjugate on the stability, in
 1227 vitro release, anti-oxidant property and cell viability of eugenol-olive oil
 1228 nanoemulsions. *International Journal of Biological Macromolecules*, 183, 158–170.
 1229 <https://doi.org/10.1016/j.ijbiomac.2021.04.122>
- 1230 O’Dwyer, S. P., O’Beirne, D., Eidhin, D. N. & O’Kennedy, B. T. (2013). Effects of sodium
 1231 caseinate concentration and storage conditions on the oxidative stability of
 1232 oil-in-water emulsions. *Food Chemistry*, 138(2), 1145–1152.
 1233 <https://doi.org/10.1016/j.foodchem.2012.09.138>
- 1234 Onsaard, E., Vittayanont, M., Srigam, S. & McClements, D. J. (2006). Comparison of
 1235 properties of oil-in-water emulsions stabilized by coconut cream proteins with those
 1236 stabilized by whey protein isolate. *Food Research International*, 39(1), 78–86.
- 1237 O’Regan, J. & Mulvihill, D. M. (2010). Sodium caseinate–maltodextrin conjugate stabilized
 1238 double emulsions: Encapsulation and stability. *Food Research International*, 43(1),
 1239 224–231. <https://doi.org/10.1016/j.foodres.2009.09.031>
- 1240 Park, S. H., Hong, C. R. & Choi, S. J. (2020). Prevention of Ostwald ripening in orange oil
 1241 emulsions: Impact of surfactant type and Ostwald ripening inhibitor type. *LWT*, 134,
 1242 110180. <https://doi.org/10.1016/j.lwt.2020.110180>
- 1243 Perrechil, F. A. & Cunha, R. L. (2010). Oil-in-water emulsions stabilized by sodium caseinate:
 1244 Influence of pH, high-pressure homogenization and locust bean gum addition. *Journal*
 1245 *of Food Engineering*, 97(4), 441–448.
- 1246 Perugini, L., Cinelli, G., Cofelice, M., Ceglie, A., Lopez, F. & Cuomo, F. (2018). Effect of the
 1247 coexistence of sodium caseinate and Tween 20 as stabilizers of food emulsions at
 1248 acidic pH. *Honoring Piero Baglioni*, 168, 163–168.
 1249 <https://doi.org/10.1016/j.colsurfb.2018.02.003>
- 1250 Piorkowski, D. T. & McClements, D. J. (2014). Beverage emulsions: Recent developments in
 1251 formulation, production, and applications. *Special Issue: A Festschrift in Honour of*
 1252 *Professor Eric Dickinson*, 42, 5–41. <https://doi.org/10.1016/j.foodhyd.2013.07.009>
- 1253 Qin, X., Yang, R., Zhong, J., Shabani, K. I. & Liu, X. (2018). Ultrasound-assisted preparation
 1254 of a human milk fat analog emulsion: Understanding factors affecting formation and
 1255 stability. *Journal of Food Engineering*, 238, 103–111.
- 1256 Qiu, C., Zhao, M. & McClements, D. J. (2015). Improving the stability of wheat
 1257 protein-stabilized emulsions: Effect of pectin and xanthan gum addition. *Food*

- 1258 *Hydrocolloids*, 43, 377–387. <https://doi.org/10.1016/j.foodhyd.2014.06.013>
- 1259 Rahimi, P., Hosseini, E., Rousta, E. & Bostar, H. (2021). Digestibility and stability of
1260 ultrasound-treated fish oil emulsions prepared by water-soluble bitter almond gum
1261 glycosylated with caseinate. *LWT*, 148, 111697. <https://doi.org/10.1016/j.lwt.2021.111697>
- 1262 Ribeiro, E. F., Morell, P., Nicoletti, V. R., Quiles, A. & Hernando, I. (2021). Protein- and
1263 polysaccharide-based particles used for Pickering emulsion stabilisation. *Food*
1264 *Hydrocolloids*, 119, 106839. <https://doi.org/10.1016/j.foodhyd.2021.106839>
- 1265 Ries, D., Ye, A., Haisman, D. & Singh, H. (2010). Antioxidant properties of caseins and whey
1266 proteins in model oil-in-water emulsions. *International Dairy Journal*, 20(2), 72–78.
- 1267 Roulet, M., Clegg, P. S. & Frith, W. J. (2019). Viscosity of protein-stabilized emulsions:
1268 Contributions of components and development of a semipredictive model. *Journal of*
1269 *Rheology*, 63(1), 179–190.
- 1270 Saffarionpour, S. (2019). Preparation of food flavor nanoemulsions by high-and low-energy
1271 emulsification approaches. *Food Engineering Reviews*, 11(4), 259–289.
- 1272 Salminen, H., Bischoff, S. & Weiss, J. (2019). Impact of concentration ratio on the formation
1273 and stability of emulsions stabilized by Quillaja saponin–sodium caseinate mixtures.
1274 *Food Biophysics*, 14(2), 109–119.
- 1275 Sánchez, C. C. & Patino, J. M. R. (2005). Interfacial, foaming and emulsifying characteristics
1276 of sodium caseinate as influenced by protein concentration in solution. *Food Colloids*
1277 *2004 (Harrogate)*, 19(3), 407–416. <https://doi.org/10.1016/j.foodhyd.2004.10.007>
- 1278 Sato, A. C. K., Perrechil, F. A., Costa, A. A. S., Santana, R. C. & Cunha, R. L. (2015).
1279 Cross-linking proteins by laccase: Effects on the droplet size and rheology of
1280 emulsions stabilized by sodium caseinate. *Food Research International*, 75, 244–251.
- 1281 Sharma, M., Mann, B., Sharma, R., Bajaj, R., Athira, S., Sarkar, P. & Pothuraju, R. (2017).
1282 Sodium caseinate stabilized clove oil nanoemulsion: Physicochemical properties.
1283 *Journal of Food Engineering*, 212, 38–46.
1284 <https://doi.org/10.1016/j.jfoodeng.2017.05.006>
- 1285 Shi, F., Chang, Y., Shen, J., Chen, G. & Xue, C. (2023). A comparative investigation of anionic
1286 polysaccharides (sulfated fucan, ι-carrageenan, κ-carrageenan, and alginate) on the
1287 fabrication, stability, rheology, and digestion of multilayer emulsion. *Food*
1288 *Hydrocolloids*, 134, 108081. <https://doi.org/10.1016/j.foodhyd.2022.108081>
- 1289 Shi, F., Tian, X., McClements, D. J., Chang, Y., Shen, J. & Xue, C. (2021). Influence of
1290 molecular weight of an anionic marine polysaccharide (sulfated fucan) on the stability
1291 and digestibility of multilayer emulsions: Establishment of structure-function
1292 relationships. *Food Hydrocolloids*, 113, 106418.
1293 <https://doi.org/10.1016/j.foodhyd.2020.106418>
- 1294 Shimizu, M., Ametani, A., Kaminogawa, S. & Yamauchi, K. (1986). The topography of
1295 αs1-casein adsorbed to an oil/water interface: an analytical approach using proteolysis.
1296 *Biochimica et Biophysica Acta (BBA)-Protein Structure and Molecular Enzymology*,

- 1297 869(3), 259–264.
- 1298 Silva, J. V. C., Jacquette, B., Amagliani, L., Schmitt, C., Nicolai, T. & Chassenieux, C. (2019).
 1299 Heat-induced gelation of micellar casein/plant protein oil-in-water emulsions.
 1300 *Colloids and Surfaces A: Physicochemical and Engineering Aspects*, 569, 85–92.
 1301 <https://doi.org/10.1016/j.colsurfa.2019.01.065>
- 1302 Singh, H. (2011). Aspects of milk-protein-stabilised emulsions. *Food Hydrocolloids*, 25(8),
 1303 1938–1944.
- 1304 Sneha, K. & Kumar, A. (2021). Nanoemulsions: Techniques for the preparation and the recent
 1305 advances in their food applications. *Innovative Food Science & Emerging*
 1306 *Technologies*, 102914.
- 1307 Sosa-Herrera, M. G., Berli, C. L. A. & Martinez-Padilla, L. P. (2008). Physicochemical and
 1308 rheological properties of oil-in-water emulsions prepared with sodium
 1309 caseinate/gellan gum mixtures. *Food Hydrocolloids*, 22(5), 934–942.
- 1310 Srinivasan, M., Singh, H. & Munro, P. A. (2002). Formation and stability of sodium caseinate
 1311 emulsions: influence of retorting (121 C for 15 min) before or after emulsification.
 1312 *Food Hydrocolloids*, 16(2), 153–160.
- 1313 Su, D. & Zhong, Q. (2016). Formation of thymol nanoemulsions with combinations of casein
 1314 hydrolysates and sucrose stearate. *Journal of Food Engineering*, 179, 1–10.
 1315 <https://doi.org/10.1016/j.jfoodeng.2016.01.030>
- 1316 Su, J. & Everett, D. W. (2003). Adsorption of κ -casein onto native milk fat globule, latex
 1317 particle, and emulsion surfaces. *6th International Hydrocolloids Conference*, 17(4),
 1318 529–537. [https://doi.org/10.1016/S0268-005X\(03\)00015-8](https://doi.org/10.1016/S0268-005X(03)00015-8)
- 1319 Sun, C. & Zhong, Q. (2022). Alkaline conjugation of caseinate and propylene glycol alginate
 1320 to prepare biopolymer complexes stabilizing oil-in-water emulsion gels. *Food*
 1321 *Hydrocolloids*, 123, 107192. <https://doi.org/10.1016/j.foodhyd.2021.107192>
- 1322 Surh, J., Decker, E. A. & McClements, D. J. (2006). Influence of pH and pectin type on
 1323 properties and stability of sodium-caseinate stabilized oil-in-water emulsions. *Food*
 1324 *Hydrocolloids*, 20(5), 607–618. <https://doi.org/10.1016/j.foodhyd.2005.07.004>
- 1325 Tadros, T. F. (1994). Fundamental principles of emulsion rheology and their applications.
 1326 *Colloids and Surfaces A: Physicochemical and Engineering Aspects*, 91, 39–55.
- 1327 Tavares, L., Zapata Noreña, C. P., Barros, H. L., Smaoui, S., Lima, P. S. & Marques de Oliveira,
 1328 M. (2022). Rheological and structural trends on encapsulation of bioactive
 1329 compounds of essential oils: A global systematic review of recent research. *Food*
 1330 *Hydrocolloids*, 129, 107628. <https://doi.org/10.1016/j.foodhyd.2022.107628>
- 1331 Tavasoli, S., Maghsoudlou, Y., Jafari, S. M. & Tabarestani, H. S. (2022). Improving the
 1332 emulsifying properties of sodium caseinate through conjugation with soybean soluble
 1333 polysaccharides. *Food Chemistry*, 377, 131987.
 1334 <https://doi.org/10.1016/j.foodchem.2021.131987>
- 1335 Walker, R., Decker, E. A. & McClements, D. J. (2015). Development of food-grade

- 1336 nanoemulsions and emulsions for delivery of omega-3 fatty acids: Opportunities and
1337 obstacles in the food industry. *Food & Function*, 6(1), 41–54.
- 1338 Walstra, P. & Jenness, R. (1984). *Dairy chemistry & physics*. John Wiley & Sons.
- 1339 Wan, L., Li, L., Xiao, J., He, N., Zhang, R., Li, B. & Zhang, X. (2022). The interfacial digestion
1340 behavior of crystalline oil-in-water emulsions stabilized by sodium caseinate during in
1341 vitro gastrointestinal digestion. *Food Hydrocolloids*, 130, 107734.
1342 <https://doi.org/10.1016/j.foodhyd.2022.107734>
- 1343 Wang, C., Li, X., Sang, S., Julian McClements, D., Chen, L., Long, J., Jiao, A., Wang, J., Jin, Z.
1344 & Qiu, C. (2022). Preparation, characterization and in vitro digestive behaviors of
1345 emulsions synergistically stabilized by γ -cyclodextrin/sodium caseinate/alginate.
1346 *Food Research International*, 160, 111634.
1347 <https://doi.org/10.1016/j.foodres.2022.111634>
- 1348 Wang, Jian, Maoulida, F., Ben Amara, C., Ghnimi, S., Chihib, N.-E., Dumas, E. &
1349 Gharsallaoui, A. (2019). Spray-drying of protein/polysaccharide complexes:
1350 Dissociation of the effects of shearing and heating. *Food Chemistry*, 297(NOV.1),
1351 124943.1-124943.6.
- 1352 Wang, Jian, Souihi, S., Amara, C. B., Dumas, E. & Gharsallaoui, A. (2018). Influence of low
1353 methoxyl pectin on the physicochemical properties of sodium caseinate- stabilized
1354 emulsions. *Journal of Food Process Engineering*, 41(8), e12906.
- 1355 Wang, Jinshui, Su, Y., Jia, F. & Jin, H. (2013). Characterization of casein hydrolysates derived
1356 from enzymatic hydrolysis. *Chemistry Central Journal*, 7(1), 1–8.
- 1357 Wang, L., Zhang, S., Jiang, W., Zhao, H. & Fu, J. (2020). Ability of casein
1358 hydrolysate-carboxymethyl chitosan conjugates to stabilize a nanoemulsion:
1359 Improved freeze-thaw and pH stability. *Food Hydrocolloids*, 101, 105452.
- 1360 Wei, Q., Liu, T. & Sun, D.-W. (2018). Advanced glycation end-products (AGEs) in foods and
1361 their detecting techniques and methods: A review. *Trends in Food Science &*
1362 *Technology*, 82, 32–45.
- 1363 Wu, F., Chen, F., Pu, Y., Qian, F., Leng, Y., Mu, G. & Zhu, X. (2022). Effects of soy lecithin
1364 concentration on the physicochemical properties of whey protein isolate,
1365 casein- stabilised simulated infant formula emulsion and their corresponding
1366 microcapsules. *International Journal of Dairy Technology*.
- 1367 Wusigale, Liang, L. & Luo, Y. (2020). Casein and pectin: Structures, interactions, and
1368 applications. *Trends in Food Science & Technology*, 97, 391–403.
1369 <https://doi.org/10.1016/j.tifs.2020.01.027>
- 1370 Xu, N., Wu, X., Zhu, Y., Miao, J., Gao, Y., Cheng, C., Peng, S., Zou, L., Julian McClements, D.
1371 & Liu, W. (2021). Enhancing the oxidative stability of algal oil emulsions by adding
1372 sweet orange oil: Effect of essential oil concentration. *Food Chemistry*, 355, 129508.
1373 <https://doi.org/10.1016/j.foodchem.2021.129508>
- 1374 Xu, W., Xiong, Y., Li, Z., Luo, D., Wang, Z., Sun, Y. & Shah, B. R. (2020). Stability,

- 1375 microstructural and rheological properties of complex prebiotic emulsion stabilized
 1376 by sodium caseinate with inulin and konjac glucomannan. *Food Hydrocolloids*, 105,
 1377 105772.
- 1378 Xue, J., Michael Davidson, P. & Zhong, Q. (2015). Antimicrobial activity of thyme oil
 1379 co-nanoemulsified with sodium caseinate and lecithin. *International Journal of Food*
 1380 *Microbiology*, 210, 1–8. <https://doi.org/10.1016/j.ijfoodmicro.2015.06.003>
- 1381 Ye, A. & Singh, H. (2001). Interfacial composition and stability of sodium caseinate emulsions
 1382 as influenced by calcium ions. *Food Hydrocolloids*, 15(2), 195–207.
- 1383 Yerramilli, M. & Ghosh, S. (2017). Long-term stability of sodium caseinate-stabilized
 1384 nanoemulsions. *Journal of Food Science and Technology*, 54(1), 82–92.
- 1385 Yerramilli, M., Longmore, N. & Ghosh, S. (2017). Improved stabilization of nanoemulsions by
 1386 partial replacement of sodium caseinate with pea protein isolate. *Food Hydrocolloids*,
 1387 64, 99–111. <https://doi.org/10.1016/j.foodhyd.2016.10.027>
- 1388 Yesiltas, B., García-Moreno, P. J., Sørensen, A.-D. M., Akoh, C. C. & Jacobsen, C. (2019).
 1389 Physical and oxidative stability of high fat fish oil-in-water emulsions stabilized with
 1390 sodium caseinate and phosphatidylcholine as emulsifiers. *Food Chemistry*, 276,
 1391 110–118. <https://doi.org/10.1016/j.foodchem.2018.09.172>
- 1392 Yesiltas, B., Sørensen, A.-D. M., García-Moreno, P. J., Anankanbil, S., Guo, Z. & Jacobsen, C.
 1393 (2018). Combination of sodium caseinate and succinylated alginate improved stability
 1394 of high fat fish oil-in-water emulsions. *Food Chemistry*, 255, 290–299.
- 1395 Zhai, X., Lin, D., Liu, D. & Yang, X. (2018). Emulsions stabilized by nanofibers from bacterial
 1396 cellulose: New potential food-grade Pickering emulsions. *Food Research*
 1397 *International*, 103, 12–20.
- 1398 Zhang, Shuaifeng, Zhang, Q., Shang, J., Mao, Z.-S. & Yang, C. (2021). Measurement methods
 1399 of particle size distribution in emulsion polymerization. *Chinese Journal of Chemical*
 1400 *Engineering*, 39, 1–15.
- 1401 Zhang, Shuangling, Jiang, W., Zhang, Z., Zhu, Y., Wang, L. & Fu, J. (2020). A nanoparticle/oil
 1402 double epigallocatechin gallate-loaded Pickering emulsion: Stable and delivery
 1403 characteristics. *LWT*, 130, 109369. <https://doi.org/10.1016/j.lwt.2020.109369>
- 1404

1405 **Tables**

1406

1407 **Table 1.** Influence of ionic strength on the mean particle diameter and ζ -potential of the CAS

1408 stabilized emulsions (Qin et al., 2018).

Concentration (mg/mL)		Z-average diameter (nm)	ζ -potential (mV)
NaCl	0	199.27 \pm 1.56 ^{bc}	-36.7 \pm 0.7 ^a
	0.1	197.76 \pm 1.59 ^c	-36.9 \pm 0.4 ^a
	0.35	202.25 \pm 2.51 ^{ab}	-36.8 \pm 1.1 ^a
	0.60	203.65 \pm 1.92 ^a	-36.9 \pm 0.7 ^a
	0.85	202.62 \pm 1.65 ^{ab}	-37.5 \pm 0.8 ^a
	1.10	204.20 \pm 2.82 ^a	-37.2 \pm 0.3 ^a
CaCl ₂	0	199.27 \pm 1.56 ^e	-36.7 \pm 0.7 ^d
	0.25	197.50 \pm 0.75 ^e	-32.6 \pm 1.6 ^c
	0.55	210.94 \pm 1.94 ^d	-31.7 \pm 0.9 ^c
	0.85	230.37 \pm 2.38 ^c	-29.3 \pm 0.6 ^b
	1.15	254.43 \pm 1.74 ^b	-26.6 \pm 0.5 ^a
	1.45	265.18 \pm 4.39 ^a	-25.9 \pm 0.4 ^a

1409 Mean values within the same column followed by the same lowercase letters are not significantly
1410 different ($P > 0.05$) between NaCl (or CaCl₂) levels.

1411

Table 2. Advantages and limitations of various techniques for detecting the instability of emulsions

	Techniques	Advantages	Disadvantages
Visual observation	Appearance, color, and odor of emulsions	Simple and rapid; The extent of creaming or sedimentation can be observed with naked eyes	Long measuring period; Unable to study other instability phenomena, such as flocculation, coalescence, and Ostwald ripening
Microscopy observation	Optical microscopy	Easy sample preparation; Easy to operate and available in most research facilities; Quick view at the shape and integrity of emulsions	Unable to provide comprehensive information about the physical status of the dispersed phase; The contrast between the different components of an emulsion is usually poor
	Confocal laser scanning microscopy (CLSM)	Three-dimensional images and surface profiles can be available; The ability to eliminate or reduce background information far from the focal plane and result in better optical resolution and contrast	The ingredients in the emulsion need to be stained prior to analysis; Not suitable for light sensitive samples; Depending on the target sample and its stain agent; The dyeing process is complex
	Scanning electron microscopy (SEM)	Possible to in-depth study of the structure and morphology of the emulsion; Able to obtain detailed the size, 3D images and surface structure as well as multi-functional information	The emulsion needs to be dried and gold/platinum coating before visualization; Detailed information on the pellet layering and internal structure cannot be provided; Hard to operate
	Transmitting electron microscopy (TEM)	Very high magnification and resolution of emulsion droplet are available; Provides detailed information on morphology, size distribution, homogeneity and surface structure	Staining and dehydration can result in structural artifacts; Hard to construct 3D image from 2D slices; Tedious operating procedure

	Atomic Force Microscope (AFM)	High resolution; Easy sample preparation; accurate height information; works in vacuum, air, and liquids; 3D images and surface roughness;	Limited vertical range; small scan size and slow scan speed; data not independent of tip; tip or sample can be damaged
Particle size analysis	Laser diffraction measurement	The measuring range for static light and dynamic light scattering are 100 nm to 1000 μm and 3 nm to 5 μm , respectively; Easy to operate; Easy sample preparation; Provides detailed information about droplet size and homogeneity in a short time	The sample needs to be diluted, which may damage the sample structure; The instrument should be flushed frequently to ensure the accuracy of the results
	Electrical pulse counting	The measuring range is 0.4 μm and 1200 μm ; Easy to operate; Rapid and accurate; Volume distribution and particle account are available	The samples should be diluted before analyzing; Pores are easily clogged
	Ultrasonic spectrometry	The measuring range is 10 nm to 1000 μm ; Samples with high concentration (>50%) can be measured; Suitable for measuring opaque emulsions; Non-destructive	Not suitable for sample with concentration less than 1%; Tedious operating procedure
Surface charge	Microelectrophoresis	Easy to operate; Easy sample preparation; Provides detailed information about the surface charge of particle	The sample needs to be diluted; The instrument should be flushed frequently to ensure the accuracy of the results
	Electroacoustic spectroscopy	Samples with high concentration (>50%) can be measured; Non-destructive	Not suitable for sample with concentration less than 1%

Rheological properties	Rheometer	A wider dynamic range of control and measurement parameters are available; Detailed information about flow, deformation and the tackiness are available	Tedious operating procedure; Equipment cleaning is complicated; Device is large and less portable
	Viscometer	Simple and rapid; Small and portable; Accurate viscosity for a wide variety of fluids available	Speed and torque capabilities are limited; Difficult to clean the capillary tube

1413

1414

1415

Table 3. Summary of recent progress in improving the stability of CAS stabilized emulsions

1416

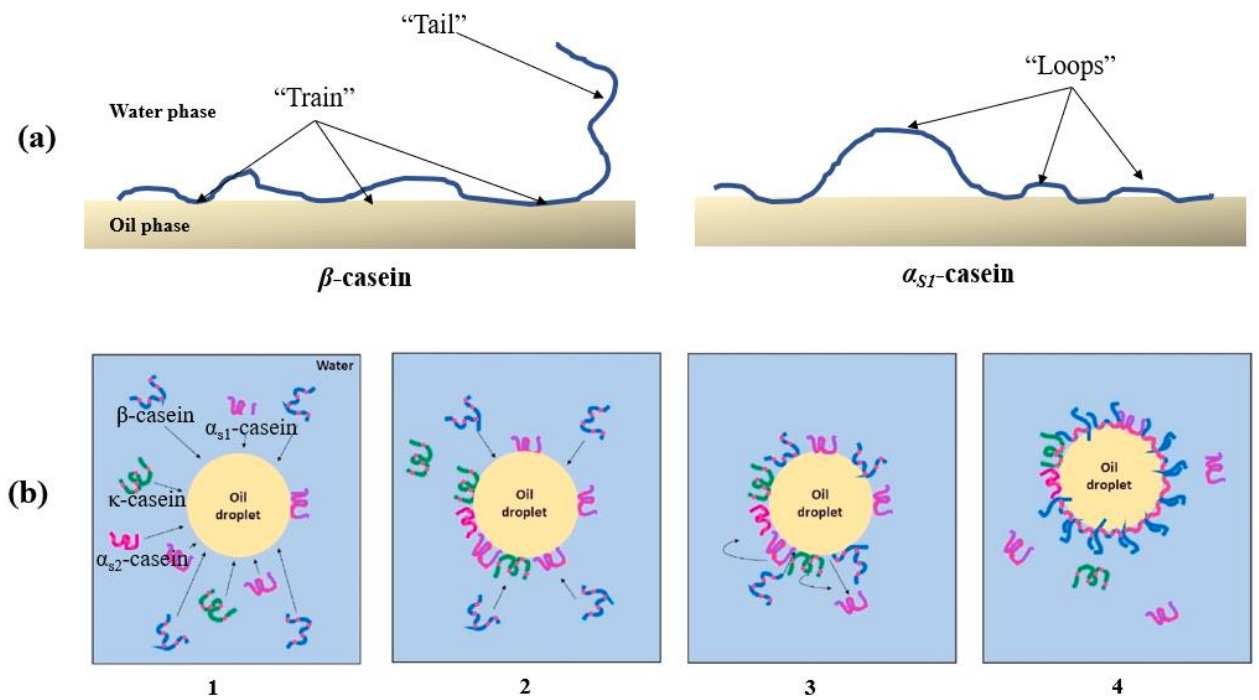
Methods	Biopolymer addition	Core material	Results	References
Optimize emulsion formulation	\	Sunflower and olive oils	Pressures (200–300 MPa) and 5 g/100 g CAS increased emulsions stabilities and the droplet size of CAS-based emulsions has an effect on the oxidation rate	(Hebishy et al., 2017)
	\	Sunflower, camelina and fish oil	Lipid hydroperoxide and p-Anisidine values of emulsions generally decreased as CAS concentration increased	(O' Dwyer et al., 2013)
	\	Sunflower oil	When ethanol is added after processing emulsions, CAS-based emulsions suffer from a slower destabilization mechanism	(Erxleben et al., 2021)
	\	Cinnamaldehyde MCT oil and sunflower oil	Mixing medium or long-chain carrier oil before homogenization can significantly inhibit Ostwald ripening of CAS-based emulsions containing essential oils	(Liao et al., 2021)
	\	Soybean oil	Ultrasound treatment improved oxidative stability of CAS based emulsion containing high level of soybean oil and enhanced the adsorbed CAS concentration	(Ke Li et al., 2020)
Mixed emulsifiers	\	Canola oil	Depletion interaction energy calculations showed droplet size reduction makes nanoemulsions more resistant to flocculation than conventional emulsions	(Yerramilli & Ghosh, 2017)
	Soy protein isolate	MCT oil	Mixed proteins contributed to good stability of the encapsulated liposoluble nutrient	(Ji et al., 2015)
	Pea protein	Canola oil	Mixed proteins nanoemulsions were more stable than the individual ones and SDS-PAGE confirmed presence of both proteins at the O/W interface	(Yerramilli et al., 2017)
	Whey protein	Canola oil	Mixed protein-based emulsions had better oxidative stability to protect volatile compounds	(Loi et al., 2019)

	Sucrose stearate	Thymol	Interaction between the two emulsifiers enhances exposure of tryptophan and tyrosine residues, favoring binding to thymol during heating	(D. Su & Zhong, 2016)
	Tween 20	Rice bran oil	Mixed emulsifier system offered a suited solution to absorption because they allow the intake of a high amount of curcumin together with a low-fat content	(Cuomo et al., 2019)
	Tween 20	Rice bran oil	The presence of Tween 20 ensured the steric stabilization promoting the use of CAS as an emulsion stabilizer at acid pH	(Perugini et al., 2018)
	Phosphatidylcholine (PC)	Fish oil	The substitution of some of the CAS with PC increased oxidative stability of the emulsions while maintaining the physical stability	(Yesiltas et al., 2019)
	Soy lecithin	MCT	Blends of CAS and lecithin produced O/W emulsions with similar appearance, color, particle size and electrical properties as those stabilizers used alone	(Chung et al., 2019)
	Soy lecithin	Coconut oil	The addition of amphiphilic lecithin could help decrease the droplet size of emulsion and increase the solubility of microcapsules	(Wu et al., 2022)
Complexation	Konjac glucomannan	Canola oil	The increase in the concentration of konjac glucomannan is beneficial to strengthen the emulsion gel network and prevent creaming of the emulsion	(Martínez-Padilla et al., 2021)
	Low methoxyl pectin (LMP)	Sunflower oil	At low LMP concentrations, complex-stabilized emulsions were more stable than layer-by-layer (LBL)-stabilized emulsions, while at high LMP concentrations, LBL-stabilized emulsions exhibited better stability.	(Jian Wang et al., 2018)
	Lactoferrin	Sunflower oil	The formation of heteroaggregates by mixing two emulsions stabilized by proteins with opposite charges, varying the emulsion volume ratio and ionic strength allowed producing systems with distinct properties	(de Figueiredo Furtado et al., 2016)
	Four different polysaccharides	Fish oil	Multilayer emulsion with targeted functions was formulated using polysaccharides; Especially, κ -Carrageenan could reach the demand of rapid digestion	(Shi et al., 2023)
	Sulfated fucan	Fish oil	The sulfated fucans with higher molecular weights could significantly increase the initial digestibility rate of CAS-based emulsions	(Shi et al., 2021)

	γ -cyclodextrin and alginate	Corn oil	γ -CD/CAS/alginate-stabilized nanoemulsions exhibited nanoscale droplet diameter and high stability even under acid, alkali, and high temperature conditions	(C. Wang et al., 2022)
	<i>Quillaja</i> Saponin	MCT oil	The emulsifying performance of the mixed binary emulsifier and the subsequent stability of the emulsion are highly dependent on the concentration ratio of the emulsifier	(Salminen et al., 2019)
	Pectin and gum Arabic	α -tocopherol and resveratrol	Both polysaccharides enhance the accumulation and stability of resveratrol at the oil-water interface	(Cheng et al., 2020)
	Trehalose	Fish oil, sunflower oil, or olive oil	The addition of trehalose diminished the volume-weighted mean diameter and the interactions protein–sugar played a key role in creaming and flocculation processes	(Álvarez Cerimedo et al., 2010)
	Carboxymethyl-cellulose	Corn oil	The results indicated that the complex formed at O/W interfaces can protect the oil droplets against flocculation and coalescence upon acidification	(L. Liu et al., 2012)
	Dextran sulfate (DS)	n-tetradecane	CAS-based Emulsions containing 1 wt% DS exhibited good shelf-life stability on quiescent storage for 3 weeks, especially when the emulsion was prepared at low pH	(Jourdain et al., 2008)
	Inulin and konjac glucomannan	Tea seed oil	Above the critical inulin/KGM ratio of 2:0.1, the droplet size of CAS-based emulsions was significantly decreased, and the creaming stability was greatly enhanced	(Xu et al., 2020)
	Gellan gum	Sunflower oil	CAS-based Emulsions containing gellan gum were stable against both flocculation and creaming	(Sosa-Herrera et al., 2008)
	Succinylated alginate	Fish oil	The modified alginate increased the stability of the emulsion, and the emulsion had a lower creaming index	(Yesiltas et al., 2018)
Conjugation	Propylene glycol alginate (PGA)	Soybean oil	PGA and CAS undergo transacylation during pH changes. This reaction imparts a gel-like structure to the emulsions and improves thermal stability of emulsions	(Sun & Zhong, 2022)

Maltodextrin	Palm-based triacylglycerol	Glycation has the ability to reduce moisture and surface oil content and produce larger particle size of spray-dried powders	(Lee et al., 2015)
Dextran	Fish oil	Glycoconjugates of CAS to dextrans were explored and glycoconjugate of CD70 displayed the best emulsifying antioxidant activity and emulsion stability with improved activity	(Liu et al., 2018)
Locust bean gum (LBG)	Soybean oil	Emulsions prepared by CAS-LBG biopolymers presented high stability and reduced particle size at pH 3.5 and 7, which could be regarded as promising alternative of emulsifying agent in neutral or acidified products	(Barbosa et al., 2019)
Sodium alginate	Corn oil	The conjugates produced stable emulsions with low surfactant to oil ratios, and the content of CAS played a major role in determining droplet size	(N. Li & Zhong, 2022)
Corn starch hydrolysates	Palm oil	Protein-polysaccharide conjugates have lower interfacial tension, and the conjugates formed by heating improve their ability to stabilize emulsions	(Consoli et al., 2018)
Pectin	Conjugated linoleic acid	The aggregation and creaming stability of the emulsions formulated by conjugates increased as the pectin-to-caseinate ratio increase	(Cheng & McClements, 2016)
Maltodextrin	MCT-oil	CAS and maltodextrin conjugates stabilized $W_1/O/W_2$ double emulsions had improved general stability when compared to CAS stabilized $W_1/O/W_2$ double emulsions	(O'Regan & Mulvihill, 2010)

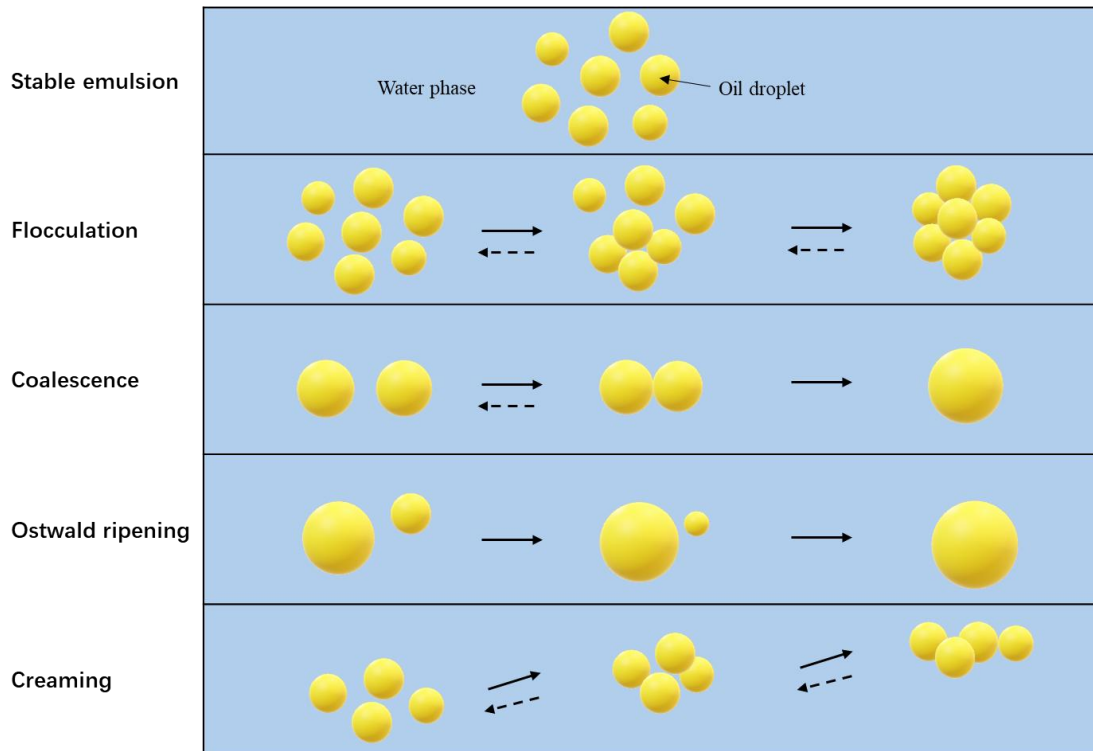
Bitter almond gum	Fish oils	The conjugate-based emulsions showed similar physical stability to CAS-stabilized emulsions, and lower antioxidant capacity.	(Rahimi et al., 2021)
Lactose	Canola oil	Better CAS-lactose interactions were achieved at pH 11, with enhanced adsorption of the conjugates at the oil droplet particles and stability.	(Li et al., 2017)
Soybean soluble polysaccharides	Sunflower oil	Conjugated based emulsions exhibited a decreasing trend in droplet size and emulsification index and have better performance at low pH and higher heat conditions.	(Tavasoli et al., 2022)
Maltodextrins and pectin	Eugenol-olive mixed oil	Higher stability of nanoemulsions were obtained by Maillard conjugate compared to protein or polysaccharides alone	(Nagaraju et al., 2021)



1419 **Fig. 1.** (a) Schematic diagram of typical adsorption configurations of α_{S1} -casein and β -casein
 1420 at oil/water interface; (b) Mechanisms for adsorption of CAS at oil/water interface.

1421 Adapted from Kim et al. (2020).

1422



1423

1424

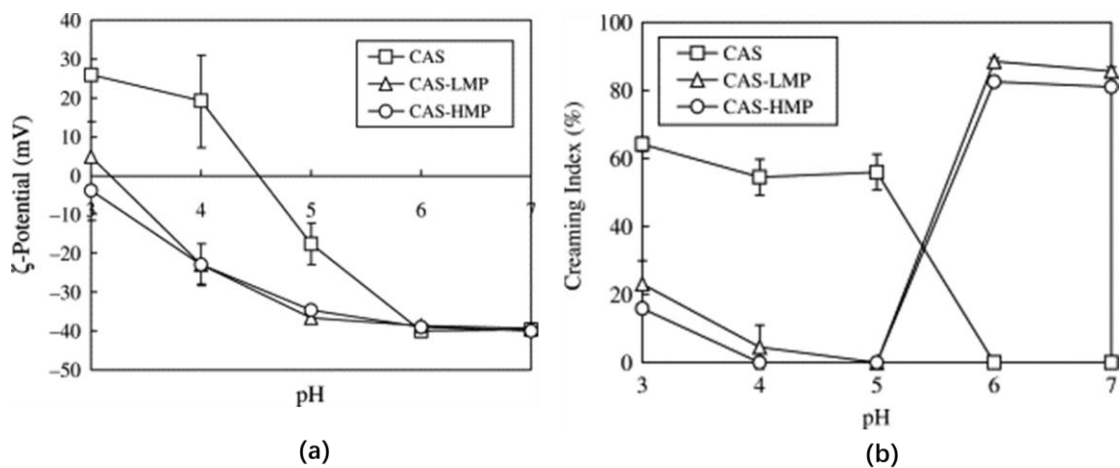
Fig. 2. Schematic diagram of the major instability mechanisms undergone by oil-in-water

1425

emulsions.

1426

1427



1428

1429

Fig. 3. Dependence of (a) electrical charge of droplets (ζ -potential) and (b) creaming index on pH

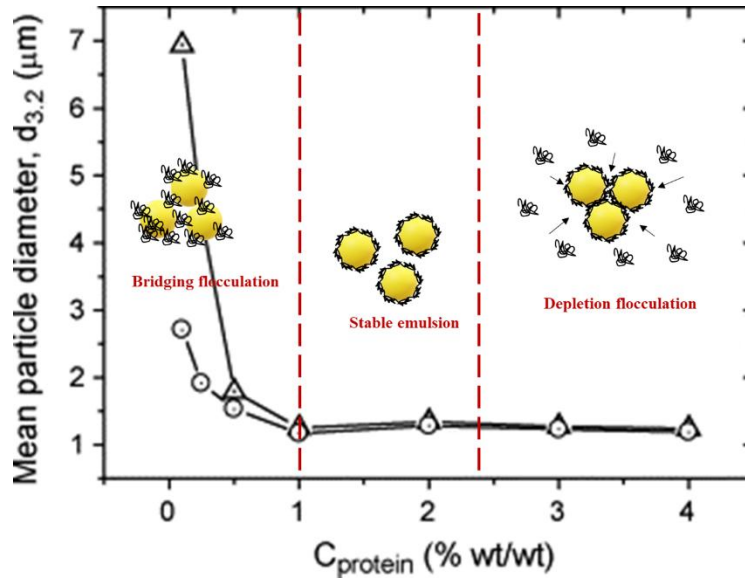
1430

and pectin type for emulsion encapsulated by CAS (Surh et al., 2006).

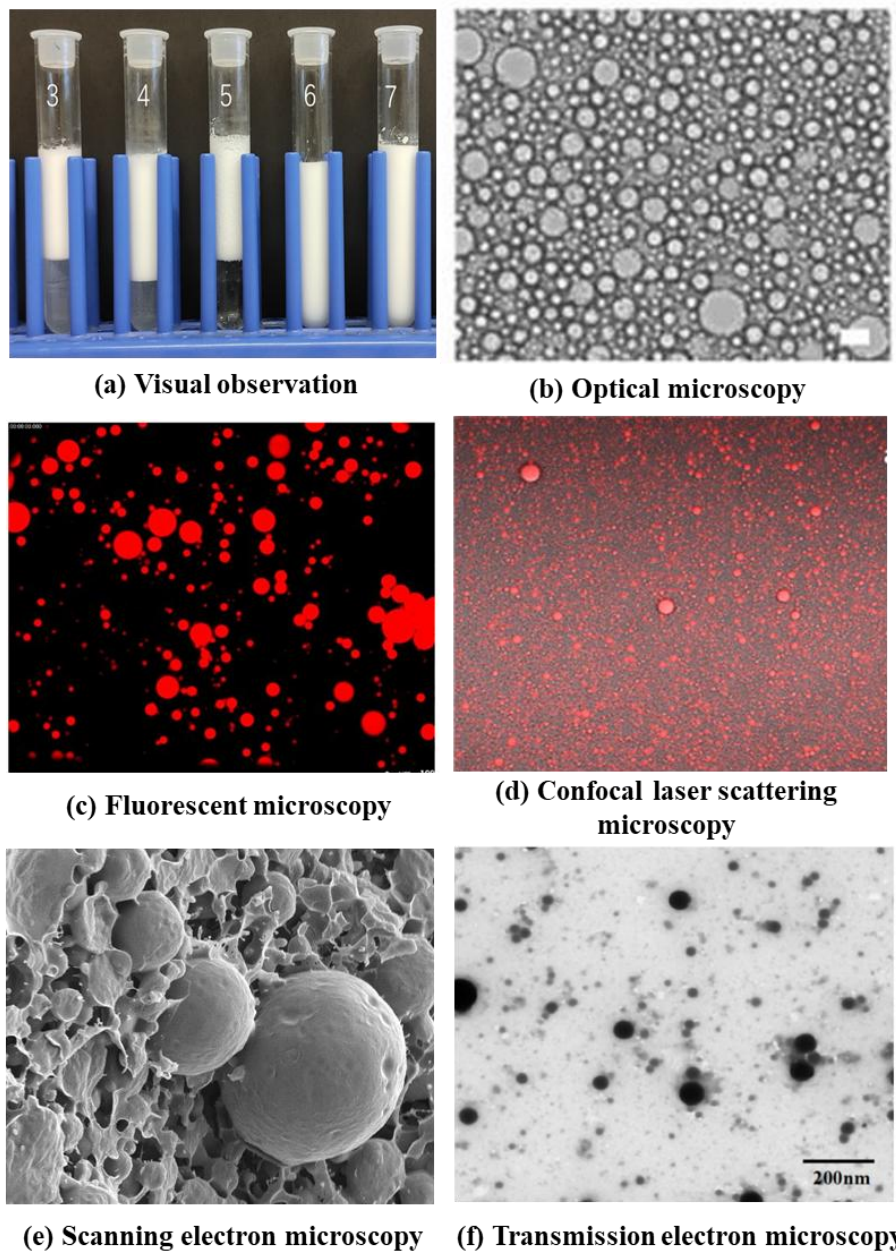
1431

1432

1433

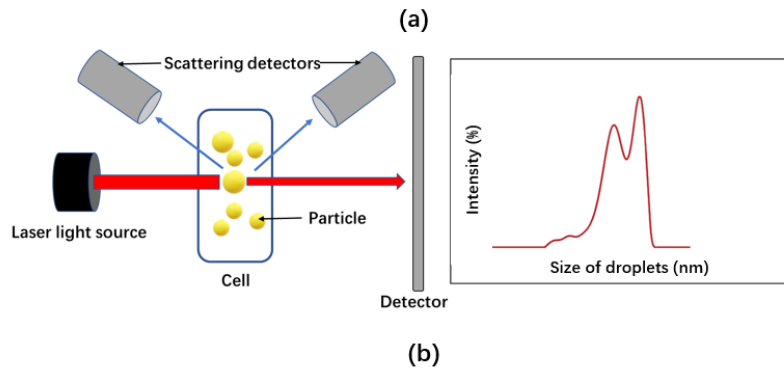
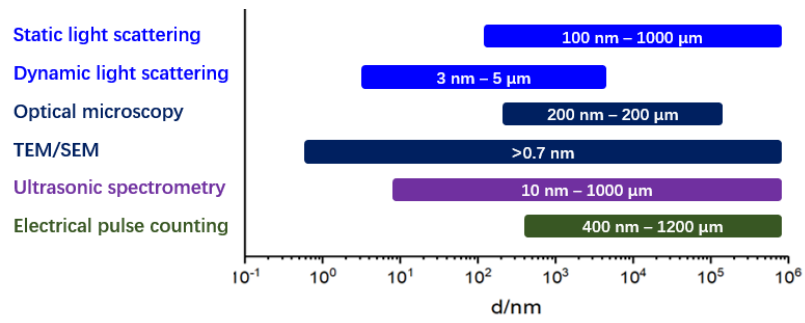


1434 **Fig. 4.** The effect of CAS concentration (% w/w) on mean particle diameter of O/W emulsions in
 1435 the absence of SDS (Δ) or in the presence of SDS (O) with the schematic diagram of bridging
 1436 flocculation and depletion flocculation in emulsion systems.
 1437 Adapted from Sánchez and Patino (2005).
 1438



1439
1440
1441
1442
1443
1444
1445
1446

Fig 5. (a) Appearance of CAS-stabilized nanoemulsions at different pH (3-7); (b) Optical image of a tea seed oil emulsions stabilized by CAS (Xu et al., 2020); (c) Fluorescent microscopy of a coconut o/w emulsion stabilized by CAS (Li & Xiang, 2019); (d) Confocal laser scattering microscopy of a fish oil emulsion stabilized by 0.5 wt.% CAS (Álvarez Cerimedo et al., 2010); (e) Scanning electron microscopy of a soybean oil emulsion stabilized by CAS (Xu et al., 2021) and (f) Transmission electron microscopy of a CAS stabilized nanoparticles (Zhang et al., 2020).



1447

1448

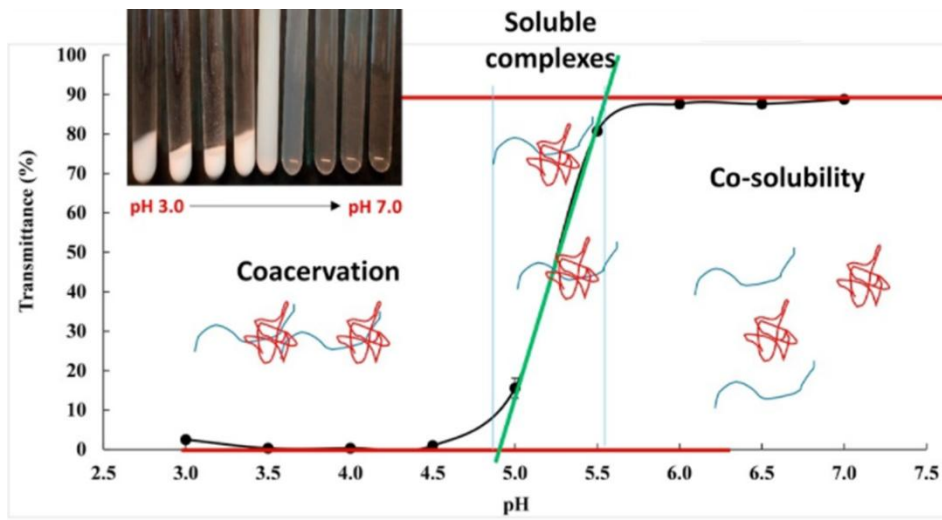
Fig 6. (a) The measuring range of common droplet size analysis techniques and

1449

(b) schematic diagram of particle size distribution detected by light scattering.

1450

1451



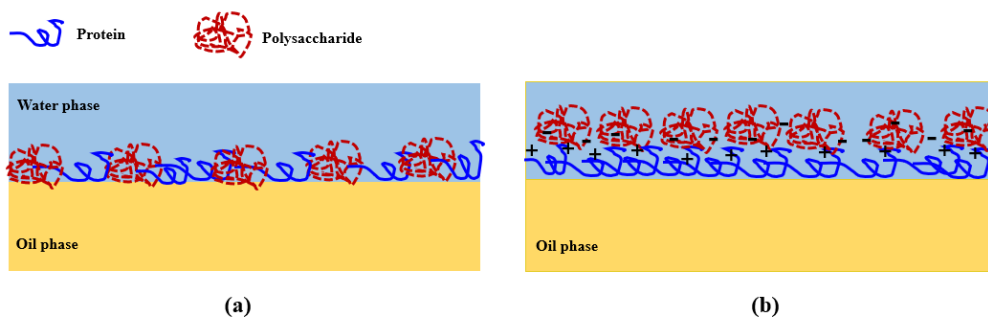
1452

Fig. 7. Transmittance (%) at 850 nm and photographs of CAS and pectin suspensions at

1453

different pHs (3.0–7.0) with ratio 2.5 (Wang et al., 2019).

1454



1455 **Fig. 8.** Schematic representation of two different methods for formulating oil-water
 1456 emulsions with protein-polysaccharide complexes as emulsifiers; (a) Mixed protein and
 1457 polysaccharide before emulsification; (b) Double layer emulsion, polysaccharide added to the
 1458 emulsion, stabilized with protein first.