



**HAL**  
open science

# The biotechnological potential of microbial communities from Antarctic soils and sediments: Application to low temperature biogenic methane production

P. Aguilar-Muñoz, C. Lavergne, R. Chamy, Léa Cabrol

## ► To cite this version:

P. Aguilar-Muñoz, C. Lavergne, R. Chamy, Léa Cabrol. The biotechnological potential of microbial communities from Antarctic soils and sediments: Application to low temperature biogenic methane production. *Journal of Biotechnology*, 2022, 351, pp.38-49. 10.1016/j.jbiotec.2022.04.014 . hal-03994455

**HAL Id: hal-03994455**

**<https://hal.science/hal-03994455>**

Submitted on 20 Feb 2023

**HAL** is a multi-disciplinary open access archive for the deposit and dissemination of scientific research documents, whether they are published or not. The documents may come from teaching and research institutions in France or abroad, or from public or private research centers.

L'archive ouverte pluridisciplinaire **HAL**, est destinée au dépôt et à la diffusion de documents scientifiques de niveau recherche, publiés ou non, émanant des établissements d'enseignement et de recherche français ou étrangers, des laboratoires publics ou privés.

# The biotechnological potential of microbial communities from Antarctic soils and sediments: application to low temperature biogenic methane production

Aguilar-Muñoz P.<sup>1,2</sup>, Lavergne C.<sup>2,3\*</sup>, Chamy R.<sup>1</sup> and Cabrol L.<sup>1,4,5\*</sup>

<sup>1</sup> Escuela de Ingeniería Bioquímica, Pontificia Universidad Católica de Valparaíso, Valparaíso, Chile.

<sup>2</sup> HUB AMBIENTAL UPLA, Universidad de Playa Ancha, Valparaíso, Chile.

<sup>3</sup> Laboratory of Aquatic Environmental Research, Centro de Estudios Avanzados, Universidad de Playa Ancha, Viña del Mar, Chile.

<sup>4</sup> Aix-Marseille Université, Mediterranean Institute of Oceanography (MIO, UMR 7294), CNRS, IRD, Marseille, France.

<sup>5</sup> Institute of Ecology and Biodiversity IEB, Faculty of Sciences, Universidad de Chile, Santiago, Chile

(E-mail: [polette.aguilar@upla.cl](mailto:polette.aguilar@upla.cl); [celine.lavergne@upla.cl](mailto:celine.lavergne@upla.cl); [lea.cabrol@mio.osupytheas.fr](mailto:lea.cabrol@mio.osupytheas.fr);

[rolando.chamy@pucv.cl](mailto:rolando.chamy@pucv.cl))

**Corresponding authors:** Céline Lavergne, [celine.lavergne@upla.cl](mailto:celine.lavergne@upla.cl), +569 4298 2246 and Léa Cabrol, [lea.cabrol@mio.osupytheas.fr](mailto:lea.cabrol@mio.osupytheas.fr), +33 76829 3383.

## Abstract

Anaerobic digestion (AD) is an attractive bioprocess for waste treatment and energy recovery through methane-rich biogas production. Under temperate to cold climate, the implementation of AD for low-organic load wastewater treatment has been limited to date, due to the energetic and economic cost of maintaining optimal mesophilic temperature. Hence, we aim at (i) exploring the biotechnological potential of a microbial inoculum from Antarctic soils and sediments to run AD at low temperatures; and (ii) evaluating the effect of temperature over a psychrophilic-mesophilic range on both methane production rates and microbial community composition. Methane production stimulated by acetate amendment was detected from 5 to 37 °C, with a maximum at 25 °C, corresponding to the highest relative abundance of methanogenic archaea (c. 21.4% of the total community). From 5 to 25 °C, the predominant methanogen was *Methanosaeta*, while it

shifted to *Methanocorpusculum* at 30 °C. Compared with an industrial mesophilic sludge, the relative methane production rate at 5 °C (compared to the maximum) was 40% greater in the Antarctic inoculum. Microbial communities from permanently cold Antarctic sediments efficiently produce methane at low temperatures revealing a biotechnological potential for the treatment of low-organic load residues in cold regions.

**Keywords**

Polar region, bioprocesses, archaea, bacteria, high throughput sequencing, qPCR, microcosms

Journal Pre-proof

## 1. Introduction

Anaerobic digestion (AD) is a widespread bioprocess used for organic waste treatment and energetic valorization, leading to biogas (methane - CH<sub>4</sub> and carbon dioxide – CO<sub>2</sub>) formation (Kelleher et al., 2002). Temperature is a critical parameter for this process. As a mesophilic process, AD provides optimal performance around 37 °C. At lower temperatures, the biogas production is drastically affected (McKeown et al., 2012). For example, below 15 °C, anaerobic reactors inoculated with mesophilic biomass lose more than 90% of their methanogenic activity (Lettinga et al., 2001). For that reason, almost all large-scale AD applications for wastewater are operated in a mesophilic range (Van et al., 2020). In temperate to cold climate regions, the energetic requirement to heat and maintain anaerobic digesters for wastewater at mesophilic temperature represents up to 30% of the biogas produced if the chemical oxygen demand (COD) is low, which makes the overall economic yield marginal or negative (Lettinga et al., 2001; McKeown et al., 2012). The low-temperature limitation is even more pronounced for residues with low organic matter content, such as domestic and some industrial wastewater (Lettinga et al., 2001). The AD operation at ambient to cold temperature can alleviate this requirement, through technological improvement of reactor configuration (e.g. using expanded granular sludge bed, EGSB), or by using a psychrophilic or cold-adapted microbial consortium ensuring stable biogas production (McKeown et al., 2009a). The choice of inoculum has been recognized as a key factor enabling the feasibility of low-temperature AD (McKeown et al., 2009b).

AD involves a complex microbial consortium performing a set of reactions, from hydrolysis to methanogenesis. While hydrolysis is limiting for complex and/or solid substrates (Donoso-Bravo et al., 2009), the methanogenesis is commonly recognized as the limiting step in the treatment of low organic load wastewater at low temperature. Two main metabolic pathways exist for the generation of CH<sub>4</sub> and CO<sub>2</sub> in AD, using either acetate or H<sub>2</sub>/CO<sub>2</sub>, however, methanogenesis from

methanol, methylamines, and formate has also been observed especially in marine environmental (Conrad, 2020). The acetoclastic methanogens generate  $\text{CH}_4$  and  $\text{CO}_2$  from acetate in such a way that carboxyl group of acetate is oxidized to  $\text{CO}_2$  so the methyl group is reduced to  $\text{CH}_4$  (Náthia-Neves et al., 2018; Whitman et al., 2006). The only archaea capable of performing this conversion are those belonging to the order Methanosarcinales, and more specifically to the genus *Methanosarcina* and *Methanosaeta* (Evans et al., 2019; Zeikus, 1977). In contrast, hydrogenotrophic methanogens generate  $\text{CH}_4$  by reducing  $\text{CO}_2$  using  $\text{H}_2$  as an electron donor (Náthia-Neves et al., 2018; Whitman et al., 2006) and belong to the order *Methanomicrobiales*, *Methanobacteriales*, *Methanocellales*, and *Methanosarcinales* (Conrad, 2020; Evans et al., 2019; Zeikus, 1977).

While hydrogenotrophic methanogenesis is thermodynamically more favorable compared to acetoclastic methanogenesis (Conrad, 2020), in mesophilic AD, approximately 60 to 70 % of  $\text{CH}_4$  is produced from acetate, because the stoichiometry of the fermentation reactions result in the production of acetate in a greater proportion than  $\text{H}_2$  (Conrad, 2020; Nozhevnikova et al., 2020; Venkiteshwaran et al., 2015). The effect of low temperature on metabolic pathways for methane production is not completely resolved (Horn et al., 2003). However, generally, it is considered that at low temperature, about 70% of the produced  $\text{CH}_4$  originates from acetate as the main precursor, the remaining originating from  $\text{H}_2$  and  $\text{CO}_2$  (Conrad, 2020).

Among natural ecosystems, wetlands are the major source of  $\text{CH}_4$  emissions (Reay et al., 2010; Saunio et al., 2020). In permanently cold natural environments, such as high Arctic peat, methanogenic archaea putatively adapted to low temperature (1-5 °C) have been detected using molecular techniques (Høj et al., 2008). The different functional groups involved in AD reactions have psychrophilic or psychrotrophic representatives (Dhaked et al., 2010). A study of microbial communities and methanogenic potential in wetland sediments from high Arctic regions

concluded that temperature was the dominant factor determining the rates of methanogenesis and structuring the methanogenic community (Blake et al., 2015). Although CH<sub>4</sub> production has been demonstrated in cold ecosystems, the inhabiting methanogenic archaea are generally considered as psychrotolerant. Indeed, the CH<sub>4</sub> production rate (MPR) usually increases when the temperature increases until reaching at least a temperature of 20 °C (de Jong et al., 2018; Lavergne et al., 2021). However, in constantly low-temperature anoxic sediments from profundal lakes in Switzerland, maximal methanogenic activity was observed at low temperature (6 °C) within a range from 2 °C to 70 °C, demonstrating the psychrophilic activity of this methanogenic community (Nozhevnikova et al., 2003). Psychrophilic methanogenic archaea species have been reported, such as *Methanogenium frigidum* (optimal 15 °C) isolated from Ace Lake, Antarctica (Franzmann et al., 1997) and *Methanolobus psychrophilus* (optimal 18 °C) isolated from a Tibetan Plateau wetland (Zhang et al., 2008).

The Antarctic region harbors one of the least human-impacted environments and provides a model for low-temperature systems (Purdy et al., 2003). Due to their unique extreme conditions, Antarctic ecosystems can be considered as a reservoir of psychrophilic biodiversity for potential biotechnological applications (Bowman et al., 2005; Yarzabal, 2016). During the short austral summer, ice-free areas appear in the coasts and islands of Antarctic Peninsula. Due to ice melting and glacier runoff, these ice-free areas are usually saturated in water, impacted by marine animal colonies, and sparse biological cover develops including microbial mats, lichens, mosses, and rare vascular plants (Casanova-Katny et al., 2016; Putzke and Pereira, 2020). Until now, the acetoclastic methanogenic potential of Antarctic soils and lake sediments has been understudied in comparison with those obtained in Arctic and sub-Arctic regions.

Few reports using sediments/soils from permanently cold regions for waste treatment at low temperatures show high rates of CH<sub>4</sub> production (Petropoulos et al., 2021, 2019; Xing et al., 2010)

suggesting their potential biotechnological application. Hence, the objectives of this work are (i) to determine the feasibility of low-temperature AD from cold-adapted microbial communities from Antarctic soils and freshwater sediments, without the need for sophisticated reactor configuration change, and (ii) to evaluate the effect of temperature (i.e., within a psychrophilic-mesophilic range) on CH<sub>4</sub> production rate (MPR) and microbial community composition. This work will lead to the generation of a consortium with a biotechnological potential for anaerobic wastewater treatment at low temperatures.

## **2. Materials and Methods**

**2.1. Inoculum origin.** The studied inoculum is a composite of nine sediment and soil samples (physicochemical characteristics available in Supplementary Table S1: temperature; pH; nitrate, nitrite, ammonia, sulfate, and phosphate concentrations; volatile solid content) mixed and homogenized, so that each individual sample contributed the same proportion of volatile solid content (i.e. organic matter proxy) to the composite sample. The samples were collected in February 2013 (Table S1) from the Antarctic peninsula and South Shetland islands, in water-saturated and organic matter rich areas such as moss wetlands or animal colony ponds (Table S1). All samples were strongly impacted by penguin and/or sea lion excrements, resulting in high organic and nutrient contents (Table S1). The nine samples were selected among a preliminary screening of 43 Antarctic samples, as the ones presenting the highest methanogenic activity at both 5 and 37 °C and the shortest latency time before methane production. The dry weight (DW) of all samples was determined by drying overnight at 110 °C. Then, volatile solid (VS) content was measured via loss on ignition (LOI) on dry samples (550 °C, at least 6h, until no change in mass).

**2.2. Experimental setup for MPR measurement.** The determination of MPR was carried out in triplicate 12 mL glass vials with 2 mL of headspace, inoculated with a similar volatile solid concentration (i.e., 5.9 g VS L<sup>-1</sup>). Each vial contained 8 mL of mineral nutrient solution specifically

developed for anaerobic biodegradation (Shelton and Tiedje, 1984), 2 g of fresh soil/sediment inoculum and acetate substrate at 30 mM final concentration, as previously described (McHugh et al., 2004). The vials were sealed with butyl septa (Plasticoid, USA) and the headspace was initially flushed with N<sub>2</sub> for 15 minutes to ensure anaerobic conditions. Microcosms were incubated in parallel at seven controlled temperatures: 5, 10, 15, 20, 25, 30 and 37 °C (± 1 °C precision), setting up triplicate microcosms at each temperature.

**2.3. Analytical monitoring for MPR determination.** The biogas production was quantified periodically by measuring the headspace pressure with a manometer (PCE-P05, PCE Instrument, Germany). The biogas composition was determined by gas chromatography (Clarus 500, Perkin Elmer, USA), equipped with a VICI Hayesep Q (4m x 1/8" OD) column (80 °C) and thermal conductivity detector (TCD, 120 °C), on a gas sample collected from the headspace with gas-tight syringe (SGE Analytical Science, Australia). The cumulated amount of moles of CH<sub>4</sub> in the gas phase was calculated using the Ideal gases law from headspace pressure and CH<sub>4</sub> proportion. The concentration of CH<sub>4</sub> in the liquid phase was determined by Henry's law considering the incubation temperature. The amount of total cumulated CH<sub>4</sub> (in the gas phase and the liquid phase) was plotted against time (Figure S2). The conversion from moles to volume of CH<sub>4</sub> was performed using normal pressure and temperature conditions (P= 1 atm, T= 273 K). The MPRs were computed as the maximum slope of the linear phase (at least four points) of CH<sub>4</sub> accumulation kinetics over time, normalized by dry weight (DW) or volatile solid (VS). The conversion yield of the substrate was calculated to the end of the exponential phase of production with respect to the fed substrate.

The temperature constant  $k$  (K<sup>-1</sup>) was defined by the equation:  $\frac{r_{X,T1}}{r_{X,T2}} = e^{k(T1-T2)}$  where T1 and T2 are temperatures (K);  $r_{X,T1}$  and  $r_{X,T2}$  are MPR at temperature T1 and T2 respectively (Henze and Harremoës, 1983). The activation energy  $E_a$  (kJ mol<sup>-1</sup>) was derived from the Arrhenius



equation:  $k = Ae^{\left(\frac{-E_a}{RT}\right)}$  where k is the MPR; A is the Arrhenius constant; R is the ideal gas constant (8.314 J K<sup>-1</sup> mol<sup>-1</sup>), T is the experimental temperature (K) (Shelley et al., 2015).

To determine the final acetate concentration, at the end of the incubation (i.e., when kinetic curves reached a plateau), the content of two vials was centrifuged (10 000 rpm for 15 min) and supernatant was filtered through a 0.22 µm membrane. Acetate concentration was measured in the filtered supernatant by HPLC (Series 200, Perkin Elmer, USA) equipped with HP 1100 RID detector, through an AMINEX column (HPX-87H, 300 \* 7.8mm \* 9 µm, BioRad, USA) heated at 50 °C, setting the mobile phase flow rate at 0.5 mL min<sup>-1</sup>; allowing a detection limit of 2.85 mM of acetate.

**2.4. DNA Extraction.** At the end of the exponential production phase of CH<sub>4</sub>, duplicated incubation samples were centrifuged (10 000 rpm for 15 min) and the pellet was stored at -20 °C. Total genomic DNA was extracted from approximately one gram of the pellet with the PowerSoil DNA isolation kit (Qiagen, USA), following the recommendations of the supplier. DNA quantity and quality were verified by UV spectrometry (BioSpec-nano, Shimadzu Scientific, Japan).

**2.5. Quantitative PCR (qPCR).** The copy number of 16S rRNA genes from total bacteria and total archaea was determined through quantitative PCR (qPCR). The amplification was carried out in duplicate using the SYBR Select Master Mix kit (Applied Biosystem) with the AriaMx thermocycler (Agilent Technologies, USA). The thermal program consisted of one cycle at 95 °C for 20 sec and 44 cycles at 95 °C for 3 sec for denaturation and at 60 °C for 30 sec for hybridization and extension. Each reaction consisted in 2 µL of DNA sample (DNA amount ranging 2.4 – 0.7 ng) in a total reaction volume of 20 µl containing 750 mM of each primer (Supplementary Table S2). For each group, standard curves were made with concentrations between 10<sup>1</sup> and 10<sup>9</sup> gene copy number µL<sup>-1</sup> using pure strains *Bacillus subtilis*, DSM ref 10, for bacteria and *Methanosarcina mazei*, DSM ref 3647, for archaea. The average amplification efficiency was higher 80% in the

linear range of standard curves ( $R^2 > 0.99$ ). The results obtained by qPCR were expressed in number of gene copies per dry weight of sediment/soil.

**2.6. High-throughput sequencing of bacterial and archaeal 16S rRNA genes.** The diversity of the bacterial and archaeal community was determined by high-throughput sequencing (Illumina MiSeq, MrDNA Lab, Shallowater, USA) of the hypervariable region V4-V5 of the 16S rRNA gene, using the universal primers 515F (GCGYCAGCMGCCGCGGTA) and 928R (CCCGYCAATTCMTTTRAGT) (Wang and Qian, 2009). The sequences were cleaned with the pipeline of MrDNA (elimination of barcodes, sequences <150bp, chimeras removal, sequences with ambiguous bases). The OTUs were defined at 97% similarity using MOTHUR (Schloss et al., 2009) and taxonomically classified by comparison (BLASTn) with the curated databases derived from GreenGenes, RDP II and NCBI. Raw sequence data are available in the European Nucleotide Archive (ENA) under the BioProject reference PRJEB52010.

**2.7. Data processing.** A total of 418 035 sequences were obtained corresponding to 15 045 OTUs. After removal of singletons, the dataset resulted in 416 338 sequences corresponding to 99.6% of the whole dataset (Supplementary Table S3). The final dataset contained 5 386 OTUs (35.8% of the pre-processed OTUs number). Number of sequences in each sample ranged from 41 658 (at 5 °C) sequences to 84 278 sequences (at 25 °C). The clean and trimmed sequences were analyzed using R version 3.6.2 software (R Core Team, 2013). The alpha diversity indices were calculated before rarefaction. For subsequent multivariate analyzes (using the 'vegan' package; Oksanen et al. (2018)), a rarefaction was performed (function *rarefy\_even\_depth* of the 'phyloseq' package; McMurdie and Holmes, (2013)) resulting in 41 658 sequences per sample.

**2.8. Statistical analyses.** The influence of temperature on MPRs was evaluated by one-way analysis of variance (ANOVA) followed by a Post-hoc test (Tukey HSD), making sure that ANOVA

assumptions were met (normality through Shapiro test and homoscedasticity through Levene test). Spearman correlation was used to correlate methanogenic activity and latency time.

The differences of microbial community structure between samples were compared through hierarchical clustering (UPGMA method) and principal component analysis (*PCA\_ordinate* function, 'phyloseq' package) based on Bray Curtis dissimilarity. Discriminating OTUs for temperature were defined by a contribution on the first two PCA dimensions greater than 2% ('FactoMineR' package).

### 3. Results

**3.1. CH<sub>4</sub> production rates (MPRs).** MPRs from the mixed Antarctic consortium were significantly affected by a temperature increase from 5 to 37 °C (ANOVA, df= 6, F = 195.6, p-value < 0.001), with the maximum MPR reached at 25 °C (Table 1, Figure 1A). The MPR value at 25 °C was higher and significantly different from those obtained at other temperatures (Tukey Post-Hoc test, p-value < 0.05). When the temperature decreased from 25 °C to 5 °C, the MPRs decreased significantly and gradually (Tukey Post-Hoc test, p-value < 0.05), being reduced by up to 52-55% at 5 °C. Similarly, when the temperature increased from 25 °C to 37 °C, a decrease in the MPR was observed compared to 25 °C (Tukey Post-Hoc test, p-value < 0.05) with 27-31% of activity loss. Interestingly, the MPRs at 20 °C were not significantly different compared to the values at 37 °C (Tukey Post-Hoc, p-value > 0.05). The reproducibility of the MPR measurements between duplicates was robust as revealed by a relative coefficient of variation always lower than 2.3%. The maximum substrate conversion yield was also obtained at 25 °C, with a value of 11.19 mmol CH<sub>4</sub> g<sup>-1</sup> COD (250.7 mL CH<sub>4</sub> g<sup>-1</sup> COD), which is significantly higher than the yield obtained at lower temperatures (Tukey Post-Hoc test, p-value < 0.05). Between 5 and 20 °C, substrate conversion yield remained stable with no significant differences (Tukey Post-Hoc test, p-value > 0.05). At higher temperatures, the yield was not significantly different from that of 25 °C (Tukey Post-Hoc

test,  $p$ -value  $> 0.05$ ). At the end of the incubation (as defined in the Material and Method section), the residual acetate was always undetectable (below the detection limit).

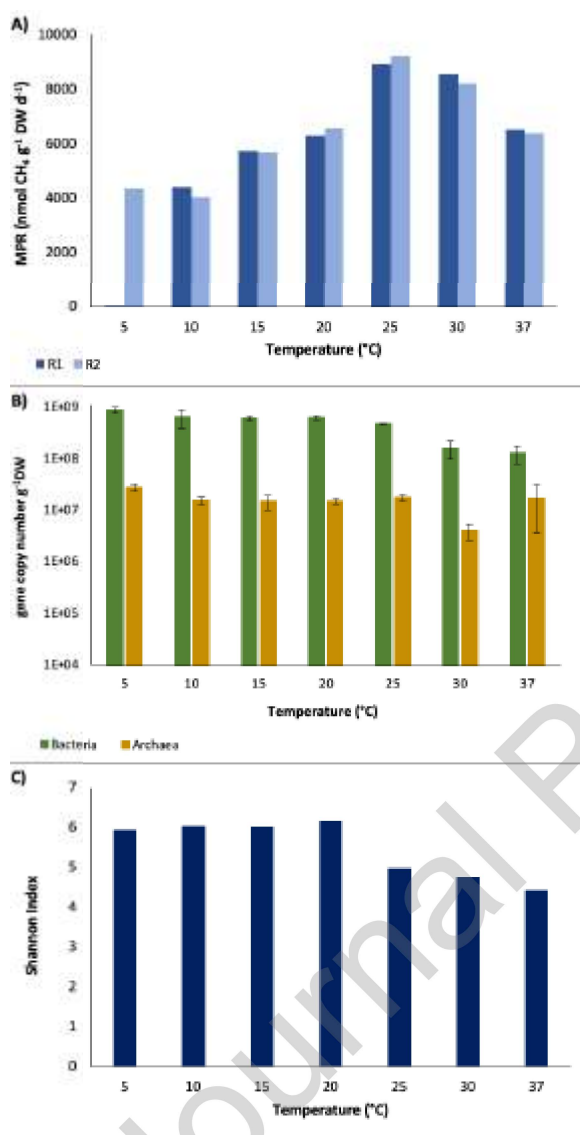
The shortest latency time (i.e., 10 days) was found between 20 °C and 30 °C, while 37 days were needed to detect first CH<sub>4</sub> production at 5 °C. Interestingly the latency time at 10-15 °C were comparable to the latency time at the highest tested temperature (37 °C, usually considered as optimal for AD), and was twice as high as the optimal one (Table 1). MPR values were negatively correlated with latency time (Spearman correlation;  $R^2 = -0.89$ ;  $p$ -value  $< 0.05$ ).

Table 1
---------

The values of MPRs were expressed as a percentage of the maximum MPR (measured at 25 °C) and compared with an empiric model from a compilation of experimental data given in Henze and Harremoës (1983) for 32 reactors inoculated with mesophilic sludge (Figure 2). The optimal temperature was 25 °C for Antarctic inoculum and 35 °C for mesophilic sludge. At the lowest temperature (i.e., 5 °C), the MPR of the conventional reactors inoculated with mesophilic sludge drastically dropped, down to 5% of their maximum MPR. By contrast, the studied Antarctic inoculum enabled to maintain at 5 °C 50% of its maximum MPR. Between 10 and 20 °C, the MPR of the mesophilic reactors was as low as 8 to 22% of the maximum MPR, while the Antarctic inoculum maintained from 46% to 70% of its maximum MPR. At 25 °C, which is the optimal temperature of the Antarctic inoculum, the mesophilic reactors present only 37% of their maximum MPR. Using the Arrhenius model, the MPR temperature dependency in the Antarctic inoculum was characterized by a calculated temperature constant of 0.047 °C<sup>-1</sup> and an activation energy  $E_a = 26.23 \text{ kJ mol}^{-1}$ .

**3.2. Proportion of archaea and bacteria.** The abundance of bacteria was stable between 5 and 25 °C with an average of  $6.44 \pm 1.47 \times 10^8$  16S rRNA gene copies g<sup>-1</sup> DW (Turkey Post-Hoc test,  $p$ -value  $> 0.05$ ). As the temperature increased (30-37 °C), the abundance of bacteria decreased significantly compared to the range 5-25 °C (Turkey Post-Hoc test,  $p$ -value  $< 0.05$ ) with an average

value of  $1.44 \pm 2.21 \times 10^8$  16S rRNA gene copies  $\text{g}^{-1}$  DW (



### 3.3. Figure 1B).

Between 5 and 30 °C, archaea represented  $2.8 \pm 0.6\%$  of the total archaeal and bacterial 16S rRNA gene copies. The lowest archaeal abundance was recorded at 30 °C with on average  $4.13 \times 10^6$  16S

Figure 1

rRNA gene copies g<sup>-1</sup> DW (2.6% of the total archaea and bacterial 16S rRNA gene copies) (

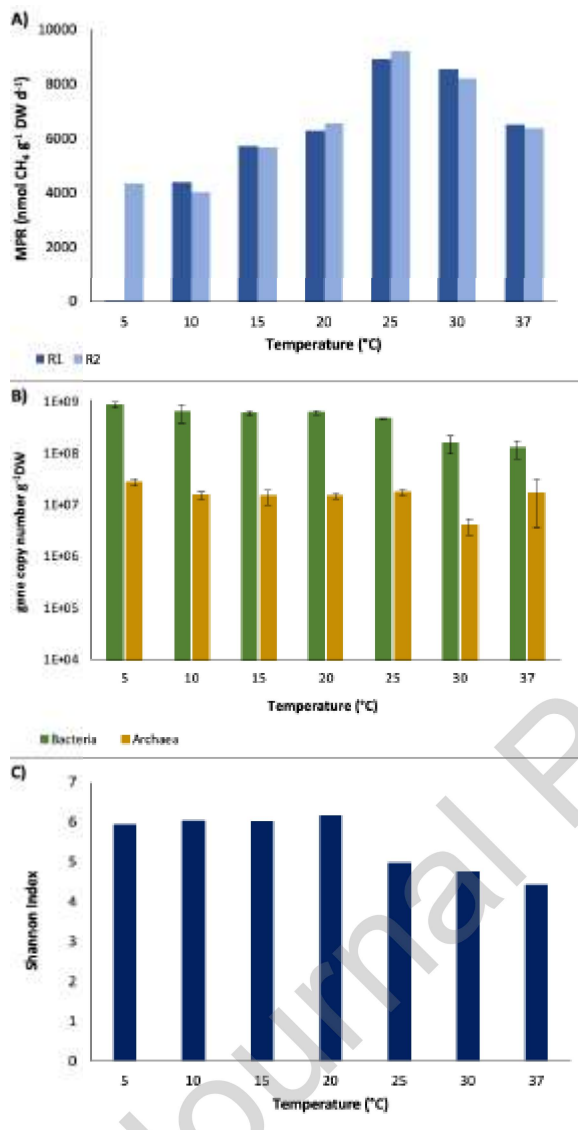
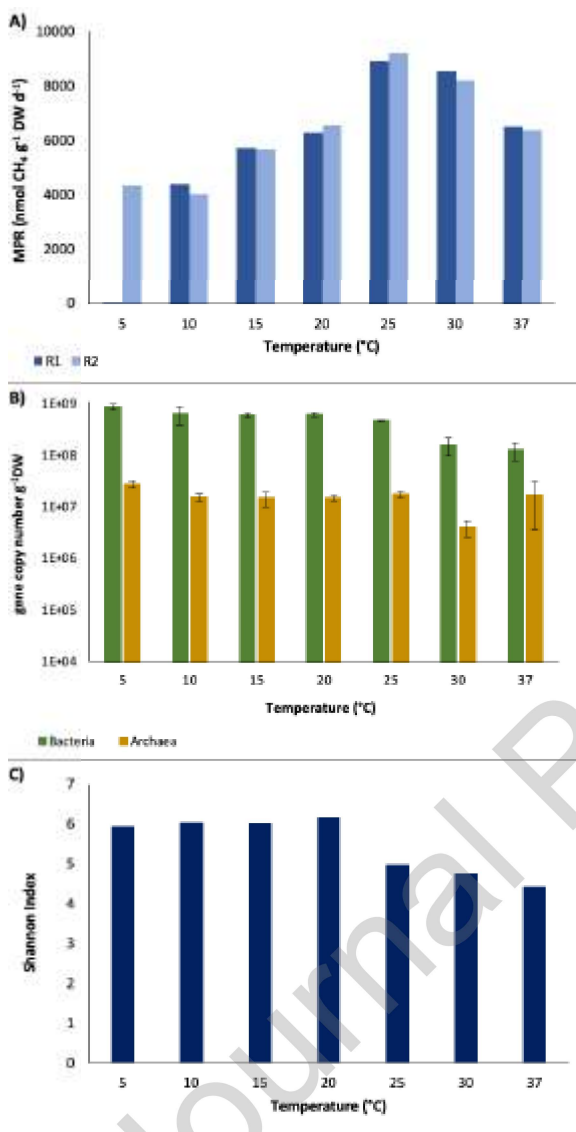


Figure 1B). At 37 °C, the relative abundance of archaea reached 13.6% of the total prokaryotic abundance (mainly because of the lower bacterial absolute abundance).

**3.4. Microbial community composition.** The OTU number remained relatively constant in all the samples from 5 to 20 °C (in average  $2590 \pm 109$  OTUs), and then decreased by 25%, 30% and 37%, at 25, 30 and 37 °C, respectively. The alpha diversity indices decreased with increasing temperature (Table S4). More specifically, the Shannon index was stable within the range 5-20 °C

( $6.0 \pm 0.1$ ) and showed a slight and progressive decrease above 25 °C until a value of 4.4 at 37 °C (



3.5. Figure 1C). Interestingly, at higher temperature, the diversity was low suggesting that higher temperatures applied a strong selective pressure on cold-adapted Antarctic microbial communities.

Analysis of microbial structure showed that the most abundant phyla were *Bacteroidetes* (28.5% to 61.0% of total sequences), *Proteobacteria* (20.9% to 34.9% of total sequences) and *Firmicutes* (2.9% to 31.1% of total sequences) (Figure 3A). At low temperature (5-20 °C), the community was strongly dominated by two phyla, while the community was more uniformly distributed when the

temperature increased above 25 °C. The samples clearly clustered according to incubation temperature, revealing the strong influence of temperature on microbial community structure.

The first two dimensions of the PCA (Figure 3B) allowed to visualize 71.6 % of variation in the total microbial community structure. The horseshoe distribution of the samples traduced the progressive changes of community structure with the gradual increase of temperature. The conformations of microbial community were structured in two groups driven by the temperature of incubation, distinguishing (i) low and medium temperature (5-20 °C) and (ii) high temperature (30-37 °C). Interestingly, at 25 °C (corresponding to the optimal MPR), the community composition was intermediate between the two temperature ranges.

Interestingly, 15 microbial OTUs were found discriminant for the construction of the PCA (Figure 3B). Between 5-25 °C, the discriminating OTU\_53 was affiliated to methanogenic archaea *Methanosaeta*, representing  $1.0 \pm 0.4\%$  of the total community between 5-20 °C and 18.1% of the community at 25 °C, and the discriminating OTU\_10 was affiliated to the bacterial genus *Parabacteroides*, representing 7.5% to 19.9% of the total community. At 30 to 37 °C, the methanogenic community clearly changed with the highest relative abundance of the genera *Methanocorpusculum* (0.3% of total community) and *Methanosarcina* (4.0% of total community) respectively. In the bacterial community, most of the discriminant genera were fermentative bacteria (e.g., *Clostridiisalibacter*, *Bacteroides*, *Candidatus Cloacimonas*).

*Methanosaeta* dominated the archaeal community from 5 to 25 °C. It showed a constant abundance of  $58.7 \pm 5.1\%$  of the archaeal community from 5 to 20 °C, and increased at 25 °C reaching 84.2% of archaeal community. At higher temperatures, the archaeal community composition shifted from *Methanosaeta*-dominated to a co-dominance of genera *Methanocorpusculum* and *Methanosarcina* representing 44.5% and 68.8% of archaeal community at 30 °C and 35 °C, respectively (Figure 2).



#### 4. Discussion

In cold and temperate regions, the development of AD processes at ambient (low) temperature for organic waste treatment is of major economic and ecological interest (Lettinga et al., 2001). In this study, a new microbial consortium from Antarctic soils and sediments, able to produce CH<sub>4</sub> at low temperature, was enriched and characterized for both methane production efficiency and microbial diversity, over a temperature gradient from 5 to 37 °C.

**4.1. High CH<sub>4</sub> production rates in the newly generated Antarctic enrichment.** Comparing data of CH<sub>4</sub> production with literature is challenging since MPRs are reported either in natural environments or in bioreactors, each field using different conventional units and protocols. The main variations can be 1) the liquid and/or headspace volume, 2) the inoculum history and concentration, 3) the addition of substrate and its concentration and 4) the incubation temperature, among others. Considering these discrepancies, we set up our incubations and expressed our results in such a way to be broadly comparable with both ecological studies (MPRs expressed in nmol CH<sub>4</sub> d<sup>-1</sup> g<sup>-1</sup> DW, Table 2) and bioengineering studies (MPRs expressed in mL CH<sub>4</sub> g<sup>-1</sup> VS d<sup>-1</sup>, Table 3).

Table 2
---------

The acetate-derived MPRs of the newly generated consortium at low temperatures (5-15 °C) ranged from 4 200 to 5 600 nmol CH<sub>4</sub> d<sup>-1</sup> g<sup>-1</sup> DW. These values are 5 to 10-fold higher than published data from cold natural environments with acetate amendment at comparable incubation temperatures, mainly recorded from the Arctic region (Table 2 and Table S5). Different works conducted in Antarctica demonstrated the presence of methanogenic activity in soils and lake sediments. In Wilson Piedmont glacier samples, Stibal et al. (2012) reported unamended MPR of 0.5, 1, and 1.1 nmol CH<sub>4</sub> d<sup>-1</sup> g<sup>-1</sup> FW (fresh weight) at 1 °C, 4 °C and 10 °C, respectively. Our consortium presented an optimal temperature of 25 °C, with acetate-derived MPR reaching 9 055 nmol CH<sub>4</sub> d<sup>-1</sup> g<sup>-1</sup> DW. The optimal temperature for methanogenesis can vary in different soils from

cold environments. In general, in low temperature ecosystem, the optimal MPR is reported at mesophilic temperatures (25 °C - 30 °C). Metje and Frenzel (2005) incubated northern peatland soils (68 °N) between 4 °C and 40 °C without amendment and concordantly found an optimum at 25 °C (i.e., 2 300 nmol CH<sub>4</sub> d<sup>-1</sup> g<sup>-1</sup> DW). However, Nozhevnikova et al. (2003) reported true psychrophilic methanogenic communities exhibiting an MPR optimum at 6 °C (i.e., 73.4 nmol CH<sub>4</sub> d<sup>-1</sup> g<sup>-1</sup> DW) when comparing unamended incubations between 4 and 60 °C of anoxic sediments from permanently cold deep lakes (4 to 5 °C). Interestingly, the maximal MPRs were reported from lakes and reservoir sediments of Chilean Patagonia (Lavergne et al., 2021), exhibiting higher content of organic matter, which can potentiate CH<sub>4</sub> production and influence the composition of the methanogenic community.

**4.2. High performance at low temperature compared with mesophilic sludge.** By fitting the model proposed by Henze and Harremoës (1983), we determined that for the Antarctic inoculum, the constant traducing the temperature effect on MPR was 0.047 °C<sup>-1</sup>, i.e. two times lower than the constant reported for mesophilic sludge exposed to low temperatures (0.1 °C<sup>-1</sup>). This means that the detrimental temperature effect is much stronger on conventional AD, and our Antarctic inoculum was more efficient for producing CH<sub>4</sub> at low temperature compared to mesophilic ones, certainly thanks to active psychrophilic microorganisms able to produce CH<sub>4</sub> at low temperature (Figure 2).

**4.3. A biotechnological potential for AD at low temperatures.** The MPRs of continuous low temperature anaerobic digesters (LTAD) operated with adapted and non-adapted mesophilic inocula have been extensively studied, mostly in state-of-the-art technological configurations such as UASB or EGSB (as reviewed in Table 3 and Table S6). They are measured in batch assays outside the reactor, after long adaptation times in the reactor (app 100-1000 days). By contrast, in the present study, the Antarctic inoculum was active after 10 to 37 days between 5-25 °C, in a simple

Table 3
---------

Table 3
---------

batch configuration. The acetoclastic MPRs from our natural consortium (i.e., 2.65 and 5.71 mL CH<sub>4</sub> g<sup>-1</sup> VS d<sup>-1</sup>) are comparable with non-adapted seed inocula and approximately 10 times lower than those obtained in long-term LTAD reactors. This difference can be explained by the fact that the biomass coming from anaerobic digesters is considerably more concentrated and enriched in active methanogens than the biomass from natural soil environments, especially in Antarctic soils and sediments poor in organic content. Notably, the reactor configurations used for LTAD and reported in Table 3, where biomass is granulated or attached to a growth-support through a biofilm, lead to considerably enhanced biomass retention in the reactor, thus facilitating the treatment of higher flow rates and lower substrate concentrations and enabling the operation at low temperature. Furthermore, organic matter from mosses can overestimate our estimation of biomass by volatile solids in Antarctic sediments and soils.

Hence, when available, the normalization of MPRs by the abundance of archaea (quantified by qPCR) allows more robust comparisons between different types of inocula. Here, unit conversions were performed assuming that there is on average 2.4 copies of 16S RNA per cell for methanogenic archaea (Sun et al., 2013). The specific MPRs of the Antarctic inoculum at temperatures below 25 °C ranged between 8 and 28 x10<sup>-8</sup> mL CH<sub>4</sub> d<sup>-1</sup> cell<sup>-1</sup>, which is significantly higher than previously reported rates. In reactor treating synthetic sewage, the specific MPR at 12 °C ranged from 0 to 6 x10<sup>-8</sup> mL CH<sub>4</sub> d<sup>-1</sup> cell<sup>-1</sup> depending on the adaptation time (from 105 to 889 days) (Keating et al., 2018). From synthetic wastewater, McAteer *et al.* (2020) found specific MPRs between 3 and 29 x10<sup>-8</sup> mL CH<sub>4</sub> d<sup>-1</sup> gene copy<sup>-1</sup>, with the greatest rates measured after long acclimatization times of the microbial community (from 110 to 443 days). Petropoulos et al. (2017b) used a mixture of lake sediment (temperature between -11 to 17 °C) and high Arctic soil (temperature between -16 to 6 °C) to treat sterile complex wastewater from a treatment plant and reported specific methanogenic activity of 4, 8 and 15 °C of 14, 17 and 23 x10<sup>-11</sup> mL CH<sub>4</sub> cell<sup>-1</sup>

$\text{day}^{-1}$  respectively. When the mixture was previously acclimatized to 4 °C, the specific methanogenic activity increased to  $88 \times 10^{-11} \text{ mL CH}_4 \text{ cell}^{-1} \text{ day}^{-1}$  at 15 °C (Petropoulos et al., 2017a). The difference between MPRs may be due to the substrate used.

All together, these results show that the Antarctic inoculum obtained in this study (i) is highly active at low temperature, with specific methanogenic rates similar or higher than those reported in LTAD reactors; (ii) enables to reduce considerably the biomass adaptation time to reach high activity at low temperature; (iii) is active in a simple batch configuration mode which can be easily scaled to a ASBR reactor; (iv) could be further enriched in anaerobic granules and/or biofilm grown on a fixed support. In the present work, acetate was used as a proxy to target the methanogenic step activity which is usually limiting for low strength wastewater. Further work should evaluate the efficiency of this inoculum to treat more complex substrates, since lipolysis has been identified as the rate limiting step on the treatment of real waste by AD at low temperature (Petropoulos et al., 2018).

**4.4. Effect of increasing temperature on methanogenic community composition.** As expected, the addition of acetate as a substrate, led to a dominance of acetoclastic methanogens (Figure 2). While a dominance of *Methanosaeta* between 5-25 °C was associated with gradual increment of MPR until a maximal value at 25 °C, we observed a shift in the methanogenic composition above 30 °C with a dominance of *Methanocorpusculum* and *Methanosarcina*.

It suggests that *Methanosaeta* would be more tolerant/adapted to low temperatures below 25 °C with a slow growth rate, enabling to maintain significant MPR up to the highest measured  $\text{CH}_4$  production efficiency. On the other hand, *Methanosarcina* should be more competitive at higher temperature (37 °C) with faster growth rate but exhibiting lower MPR than *Methanosaeta* at 25 °C; moreover, *Methanosarcina* was overcompeted at low temperatures. The presence of the genus *Methanosaeta* is consistent with the addition of acetate in the experiment. However, its

Figure 2

dominance over *Methanosarcina* at low temperatures (below 25 °C) in the Antarctic inoculum incubated with 30 mM acetate can be more surprising since at high (> 4 mM) acetate concentrations the r-strategist *Methanosarcina* is usually considered as more competitive than the K-strategist *Methanosaeta* (Jetten et al., 1992). This could be explained by the capacity of *Methanosarcina* to use methanol and/or H<sub>2</sub>/CO<sub>2</sub> with no acetate dependence for growth under low temperature conditions (Gunnigle et al., 2013).

A large diversity of *Methanosarcina* species has been reported in cold regions. For example *Methanosarcina lacustris* has been described in anoxic sediments from Switzerland growing between 1 and 35 °C with optimum at 25 °C (Simankova et al., 2001). Also, *Methanosarcina baltica* was isolated from sediment in the Baltic Sea and in anoxic marine sediments in Alaska as capable to grow from -2 to 28 °C, with an optimum at 21 °C (Von Klein et al., 2002). *Methanosarcina* sp. was also found in the frozen Antarctic lake Fryxell (Karr et al., 2006). Finally, *Methanosarcina subterranea* was the predominant methanogenic archaea in sub-Antarctic freshwater sediments incubated with acetate at low temperature (5-20 °C) (Lavergne et al., 2021). On the other hand, in organic-rich Antarctic marine sediments, *Methanosaeta* was reported as the predominant and active methanogenic archaea, highlighting their role in CH<sub>4</sub> production and overall carbon cycling within sedimentary environments (Carr et al., 2018).

In LTAD, *Methanosaetaceae* are usually predominant and positively correlated to process efficiency, whereas low levels of *Methanosarcinaceae* have been reported in well-functioning LTAD systems (Gunnigle et al., 2013). Ribera-Pi et al. (2020) operated three configurations of reactors and concluded that *Methanosaeta* was by far the most abundant genus (> 50%) and suggested the importance of the acetoclastic pathway when operating at low temperatures (9.7 ± 2.4 °C). Similarly, Singh et al.,(2019) reported dominant acetoclastic pathway at low temperatures (10 and 20 °C) in batch reactors, highlighting the role of *Methanosaeta*.

Figure 3

**4.5. A putative hydrogenotrophic detour.** Interestingly, at 30 °C, we measured a change in the main methanogenic group, with hydrogenotrophic methanogens, such as *Methanocorpusculum*, representing 53.3 % of the archaea community (Figure 2). This suggests a change in the CH<sub>4</sub> generation pathway that could be linked to the presence of acetate-consuming bacteria that can produce hydrogen (e.g. *Clostridium* and other syntrophic acetate-oxidizing bacteria (SAOB)) (Schink, 1997). The shift from acetoclastic-dominated methanogenesis to SAO-coupled hydrogenotrophic methanogenesis has been previously observed in anaerobic digestion microbiome exposed to different environmental disturbances (Hardy et al., 2021). The genus *Candidatus Cloacimonas* presents a maximal relative abundance at 30 °C with 14.1% of total sequences. The *in silico* proteome analysis of *Candidatus Cloacimonas acidaminovorans* (not cultivated) indicated that this bacterium, present in many anaerobic digesters, is a syntrophic producer of H<sub>2</sub> and CO<sub>2</sub> from formate (Pelletier et al., 2008; Solli et al., 2014). Also, *Clostridium* was present over the whole temperature range (representing 1.7% at 5 °C and 5.1% of total sequences at 37 °C). This group is able to produce H<sub>2</sub> and volatile fatty acids through a syntrophic pathway (Ghasimi et al., 2015). Psychrophilic species of *Clostridium* have been reported in arctic permafrost growing between 5 and 6 °C (Shcherbakova et al., 2004). Finally, the genus *Geobacter* (representing between 0.3% and 4.9% of total sequences) is an anaerobic microorganism that completely oxidizes acetate, among other fatty acids, to CO<sub>2</sub> with Fe (III) as an electron acceptor (Lovley et al., 1993).

The increase of temperature can also favor other members of the community that could compete with methanogens and CH<sub>4</sub>-associated microorganisms. Among them, the most abundant genus within Proteobacteria was *Desulfobacterium* (representing between 0.9% and 4.9% of total sequences), which is a strict anaerobic bacteria reducing sulfate, able to use acetate among other fatty acids as carbon source, as reported in Siberian permafrost (Rivkina et al., 2016).

**4.6. Main bacterial members affected by temperature.** Our results of alpha-diversity corroborate the hypothesis that, in an Antarctic inoculum, the diversity decreases with increasing temperature, selecting only the microorganisms capable of growing at mesophilic temperatures. In addition, the temperature has also an effect on bacterial community composition and relative abundances, especially on taxa known to be involved directly or indirectly in methane-cycling, as shown below.

The most abundant bacterial phyla *Bacteroidetes*, *Proteobacteria* and *Firmicutes* exhibited different patterns in response to temperature. While *Proteobacteria* remained constant whatever the temperature (mean relative abundance of  $27.1 \pm 5.3\%$  of total sequences), the relative abundance of the phylum *Bacteroidetes* (that represented between 61.03% at 5 °C and 35.62% at 37 °C of total sequences) decreased with increasing temperature. Among this phylum, several genera followed this pattern. *Parabacteroides* (constituting 19.9% at 5 °C and 0.5% of total sequences at 37 °C) and *Anaerophaga* (representing 8.3% at 5 °C and 0.1% of total sequences at 37 °C) produce volatile fatty acids, such as acetate and succinate (Denger et al., 2002; Sakamoto and Benno, 2006). Also, *Flavobacterium* (representing between 5.4% at 5 °C and 0.8% of total sequences at 37 °C) are facultative anaerobes able to ferment polysaccharides, as evidenced in permafrost (Zhang et al., 2007). This genus is widely studied in cold environments and is present in Antarctic lakes (Humphry et al., 2001). The negative impact of increasing temperature on these bacteria suggests that, in the studied environment, they might be adapted and specific to low temperatures. In contrast, the abundance of genus *Bacteroides* increased with temperature above 30 °C (constituting 1.8% at 5 °C and 26.8% of total sequences at 37 °C). This genus is recognized to be anaerobic and fermentative of sugar and peptone, and was reported in Alaskan tundra for example (Lipson et al., 2013). It seems that this genus can tolerate low temperatures, but its optimal temperature would be closer to the mesophilic range. Finally, the relative abundance of

the phylum *Firmicutes* increased with temperature (Figure 3). A representative genus is *Clostridiisalibacter*, which never exceeded 0.04% of total sequences from 5 to 25 °C and represented up to 12% at 37 °C. This genus is recognized as a moderate halophilic, thermotolerant, chemoorganotrophic anaerobe (Liebgott et al., 2008). A second representative genus is *Thermaerobacter* which is present in the range from 5-30 °C in average relative abundance of 0.05% ± 0.02% of total sequences, while at 37 °C it represented 4.70% of total sequences. *Thermaerobacter* has characteristics of aerobic thermophile, neutrophil heterotroph, capable of using organic substrates (Takai et al., 1999).

## 5. Conclusion

Under psychrophilic conditions, the newly generated Antarctic inoculum successfully maintained relatively high CH<sub>4</sub> production rate at low temperature, more efficiently than a mesophilic sludge, and had higher specific methanogenic activity than a mesophilic sludge. Temperature affected the CH<sub>4</sub> generation as well as methanogenic and total bacterial and archaeal community. The microbial community was similar between 5 and 25 °C, but the diversity decreased above 25 °C, and our data suggest a shift of methanogenic pathway from acetoclasty to SAO-coupled hydrogenotrophy. The generated Antarctic inoculum has a biotechnological potential and could be considered as a future solution, after further enrichment and immobilization, for the treatment of wastes at low temperatures in cold mid- and high-latitude regions of the planet.

## Acknowledgments

This work was supported by “Instituto Antártico Chileno” (INACH) project [RT\_09-12, 2012–2015]. Mobility was funded by ECOS Sud-CONICYT Project “MATCH” [C16B03, 2017–2020]. We acknowledge the French ministries MAEDI (Ministère des Affaires Étrangères et du Développement International) and MENESR (Ministère de l’Éducation nationale, de



l'Enseignement supérieur et de la Recherche) as well as Chilean CONICYT (Comisión Nacional de Investigación Científica y Tecnológica). Polette Aguilar-Muñoz was granted by Chilean Ministry of science, technology, knowledge and innovation [ANID National Doctoral grant 21161068]. Céline Lavergne was granted by ANID FONDECYT [grant 3180374].

### Author contributions

**Polette Aguilar-Muñoz:** Conceptualization, Methodology, Investigation, Writing; **Céline Lavergne:** Investigation, Supervision, Writing, review & editing; **Rolando Chamy:** Resources; **Léa Cabrol:** Conceptualization, Methodology, Investigation, Supervision, Writing, review & editing

### Conflict of interest

Authors declare no conflict of interest

### References

- Akila, G., Chandra, T.S., 2007. Performance of an UASB reactor treating synthetic wastewater at low-temperature using cold-adapted seed slurry. *Process Biochem.* 42, 466–471. <https://doi.org/10.1016/j.procbio.2006.09.010>
- Álvarez, J.A., Armstrong, E., Gómez, M., Soto, M., 2008. Anaerobic treatment of low-strength municipal wastewater by a two-stage pilot plant under psychrophilic conditions. *Bioresour. Technol.* 99, 7051–7062. <https://doi.org/10.1016/j.biortech.2008.01.013>
- Bialek, K., Cysneiros, D., O'Flaherty, V., 2013. Low-temperature (10°C) anaerobic digestion of dilute dairy wastewater in an EGSB bioreactor: Microbial community structure, population dynamics, and kinetics of methanogenic populations. *Archaea* 2013, 346171. <https://doi.org/10.1155/2013/346171>
- Blake, L.I., Tveit, A., Øvreås, L., Head, I.M., Gray, N.D., 2015. Response of methanogens in arctic sediments to temperature and methanogenic substrate availability. *PLoS One* 10. <https://doi.org/10.1371/journal.pone.0129733>
- Bowman, J.P., Abell, G.C.J., Mancuso Nichols, C.A., 2005. Psychrophilic extremophiles from Antarctica: Biodiversity and biotechnological potential. *Ocean Polar Res.* 27, 221–230. <https://doi.org/10.4217/OPR.2005.27.2.221>
- Carr, S.A., Schubotz, F., Dunbar, R.B., Mills, C.T., Dias, R., Summons, R.E., Mandernack, K.W., 2018. Acetoclastic Methanosaeta are dominant methanogens in organic-rich Antarctic marine

- sediments. *ISME J.* 12, 330–342. <https://doi.org/10.1038/ismej.2017.150>
- Casanova-Katny, A., Torres-Mellado, G.A., Eppley, S.M., 2016. Reproductive output of mosses under experimental warming on Fildes Peninsula, King George Island, maritime Antarctica. *Rev. Chil. Hist. Nat.* 89, 1–9. <https://doi.org/10.1186/S40693-016-0061-Y/FIGURES/2>
- Collins, G., Mahony, T., O’Flaherty, V., 2006. Stability and reproducibility of low-temperature anaerobic biological wastewater treatment. *FEMS Microbiol. Ecol.* 55, 449–458. <https://doi.org/10.1111/j.1574-6941.2005.00034.x>
- Conrad, R., 2020. Importance of hydrogenotrophic, acetoclastic and methylotrophic methanogenesis for methane production in terrestrial, aquatic and other anoxic environments: A mini review. *Pedosphere*. [https://doi.org/10.1016/S1002-0160\(18\)60052-9](https://doi.org/10.1016/S1002-0160(18)60052-9)
- de Jong, A.E.E., in ’t Zandt, M.H., Meisel, O.H., Jetten, M.S.M., Dean, J.F., Rasigraf, O., Welte, C.U., 2018. Increases in temperature and nutrient availability positively affect methane-cycling microorganisms in Arctic thermokarst lake sediments. *Environ. Microbiol.* 20, 4314–4327. <https://doi.org/10.1111/1462-2920.14345>
- Denger, K., Ludwig, W., Warthmann, R., Schink, B., 2002. *Anaerophaga thermohalophila* gen. nov., sp. nov., a moderately thermohalophilic, strictly anaerobic fermentative bacterium. *Int. J. Syst. Evol. Microbiol.* 52, 173–178. <https://doi.org/10.1099/00207713-52-1-173>
- Dhaked, R.K., Singh, P., Singh, L., 2010. Biomethanation under psychrophilic conditions. *Waste Manag.* <https://doi.org/10.1016/j.wasman.2010.07.015>
- Donoso-Bravo, A., Retamal, C., Carballa, M., Ruiz-Filippi, G., Chamy, R., 2009. Influence of temperature on the hydrolysis, acidogenesis and methanogenesis in mesophilic anaerobic digestion: parameter identification and modeling application. *Water Sci. Technol.* 60, 9–17. <https://doi.org/10.2166/WST.2009.316>
- Enright, A.M., McGrath, V., Gill, D., Collins, G., O’Flaherty, V., 2009. Effect of seed sludge and operation conditions on performance and archaeal community structure of low-temperature anaerobic solvent-degrading bioreactors. *Syst. Appl. Microbiol.* 32, 65–79. <https://doi.org/10.1016/j.syapm.2008.10.003>
- Evans, P.N., Boyd, J.A., Leu, A.O., Woodcroft, B.J., Parks, D.H., Hugenholtz, P., Tyson, G.W., 2019. An evolving view of methane metabolism in the Archaea. *Nat. Rev. Microbiol.* <https://doi.org/10.1038/s41579-018-0136-7>
- Franzmann, P.D., Liu, Y., Balkwill, D.L., Aldrich, H.C., Conway De Macario, E., Boone, D.R., 1997. *Methanogenium frigidum* sp. nov., a psychrophilic, H<sub>2</sub>-using methanogen from Ace Lake, Antarctica. *Int. J. Syst. Bacteriol.* 47, 1068–1072. <https://doi.org/10.1099/00207713-47-4-1068>
- Ghasimi, D.S.M., Tao, Y., De Kreuk, M., Zandvoort, M.H., Van Lier, J.B., 2015. Microbial population dynamics during long-term sludge adaptation of thermophilic and mesophilic sequencing batch digesters treating sewage fine sieved fraction at varying organic loading rates. *Biotechnol. Biofuels* 8, 171. <https://doi.org/10.1186/s13068-015-0355-3>
- Gunnigle, E., McCay, P., Fuszard, M., Botting, C.H., Abram, F., O’Flaherty, V., 2013. A functional approach to uncover the low-temperature adaptation strategies of the archaeon *Methanosarcina barkeri*. *Appl. Environ. Microbiol.* 79, 4210–4219.

<https://doi.org/10.1128/AEM.03787-12>

- Hardy, J., Bonin, P., Lazuka, A., Gonidec, E., Guasco, S., Valette, C., Lacroix, S., Cabrol, L., 2021. Similar Methanogenic Shift but Divergent Syntrophic Partners in Anaerobic Digesters Exposed to Direct versus Successive Ammonium Additions. *Microbiol. Spectr.* 9. [https://doi.org/10.1128/SPECTRUM.00805-21/SUPPL\\_FILE/SPECTRUM00805-21\\_SUPP\\_1\\_SEQ1.DOCX](https://doi.org/10.1128/SPECTRUM.00805-21/SUPPL_FILE/SPECTRUM00805-21_SUPP_1_SEQ1.DOCX)
- Henze, M., Harremoës, P., 1983. Anaerobic Treatment of Wastewaters in Fixed Film Reactors—A Literature. *Water Sci. Technol.* 15, 1–101.
- Ho, J., Sung, S., 2010. Methanogenic activities in anaerobic membrane bioreactors (AnMBR) treating synthetic municipal wastewater. *Bioresour. Technol.* 101, 2191–2196. <https://doi.org/10.1016/j.biortech.2009.11.042>
- Høj, L., Olsen, R. a, Torsvik, V.L., 2008. Effects of temperature on the diversity and community structure of known methanogenic groups and other archaea in high Arctic peat. *ISME J.* 2, 37–48. <https://doi.org/10.1038/ismej.2007.84>
- Horn, M.A., Matthies, C., Küsel, K., Schramm, A., Drake, H.L., 2003. Hydrogenotrophic methanogenesis by moderately acid-tolerant methanogens of a methane-emitting acidic peat. *Appl. Environ. Microbiol.* 69, 74–83. <https://doi.org/10.1128/AEM.69.1.74-83.2003>
- Humphry, D.R., George, A., Black, G.W., Cummings, S.P., 2001. *Flavobacterium frigidarium* sp. nov., an aerobic, psychrophilic, xylanolytic and laminarinolytic bacterium from Antarctica. *Int. J. Syst. Evol. Microbiol.* 51, 1235–1243. <https://doi.org/10.1099/00207713-51-4-1235>
- Jetten, M.S.M., Stams, A.J.M., Zehnder, A.J.B., 1992. Methanogenesis from acetate: a comparison of the acetate metabolism in *Methanotherix soehngenii* and *Methanosarcina* spp. *FEMS Microbiol. Lett.* 88, 181–198. <https://doi.org/10.1111/j.1574-6968.1992.tb04987.x>
- Karr, E.A., Ng, J.M., Belchik, S.M., Sattley, W.M., Madigan, M.T., Achenbach, L.A., 2006. Biodiversity of Methanogenic and Other Archaea in the Permanently. *Appl. Environ. Microbiol.* 72, 1663–1666. <https://doi.org/10.1128/AEM.72.2.1663>
- Keating, C., Hughes, D., Mahony, T., Cysneiros, D., Ijaz, U.Z., Smith, C.J., O’Flaherty, V., 2018. Cold adaptation and replicable microbial community development during long-term low-temperature anaerobic digestion treatment of synthetic sewage. *FEMS Microbiol. Ecol.* 94. <https://doi.org/10.1093/femsec/fiy095>
- Kelleher, B.P., Leahy, J.J., Henihan, a M., O’Dwyer, T.F., Sutton, D., Leahy, M.J., 2002. Advances in poultry litter disposal technology--a review. *Bioresour. Technol.* 83, 27–36. [https://doi.org/10.1016/S0960-8524\(01\)00133-X](https://doi.org/10.1016/S0960-8524(01)00133-X)
- Lavergne, C., Aguilar-Muñoz, P., Calle, N., Thalasso, F., Astorga-España, M.S., Sepulveda-Jauregui, A., Martinez-Cruz, K., Gandois, L., Mansilla, A., Chamy, R., Barret, M., Cabrol, L., 2021. Temperature differently affected methanogenic pathways and microbial communities in sub-Antarctic freshwater ecosystems. *Environ. Int.* 154, 106575. <https://doi.org/10.1016/j.envint.2021.106575>
- Lettinga, G., Rebac, S., Zeeman, G., 2001. Challenge of psychrophilic anaerobic wastewater treatment. *Trends Biotechnol.* 19, 363–370. [https://doi.org/10.1016/S0167-7799\(01\)01701-2](https://doi.org/10.1016/S0167-7799(01)01701-2)

- Liebgett, P.-P., Joseph, M., Fardeau, M.-L., Cayol, J.-L., Falsen, E., Chamkh, F., Qatibi, A.-I., Labat, M., 2008. *Clostridiisalibacter paucivorans* gen. nov., sp. nov., a novel moderately halophilic bacterium isolated from olive mill wastewater. *Int. J. Syst. Evol. Microbiol.* 58, 61–67. <https://doi.org/10.1099/ijs.0.65182-0>
- Lipson, D.A., Haggerty, J.M., Srinivas, A., Raab, T.K., Sathe, S., Dinsdale, E.A., 2013. Metagenomic Insights into Anaerobic Metabolism along an Arctic Peat Soil Profile. *PLoS One* 8, e64659. <https://doi.org/10.1371/journal.pone.0064659>
- Lofton, D.D., Whalen, S.C., Hershey, A.E., 2015. Vertical sediment distribution of methanogenic pathways in two shallow Arctic Alaskan lakes. *Polar Biol.* 38, 815–827. <https://doi.org/10.1007/s00300-014-1641-4>
- Lovley, D.R., Giovannoni, S.J., White, D.C., Champine, J.E., Phillips, E.J.P., Gorby, Y.A., Goodwin, S., 1993. *Geobacter metallireducens* gen. nov. sp. nov., a microorganism capable of coupling the complete oxidation of organic compounds to the reduction of iron and other metals. *Arch. Microbiol.* 159, 336–344. <https://doi.org/10.1007/BF00290916>
- Ma, H., Yan, W., Xiao, X., Shi, G., Li, Y., Sun, B., Dou, Y., Zhang, Y., 2018. Ex Situ Culturing Experiments Revealed Psychrophilic Hydrogentrophic Methanogenesis Being the Potential Dominant Methane-Producing Pathway in Subglacial Sediment in Larsemann Hills, Antarctic. *Front. Microbiol.* 9, 237. <https://doi.org/10.3389/fmicb.2018.00237>
- Madden, P., Chinalia, F.A., Enright, A.M., Collins, G., O’Flaherty, V., 2010. Perturbation-independent community development in low-temperature anaerobic biological wastewater treatment bioreactors. *Biotechnol. Bioeng.* 105, 79–87. <https://doi.org/10.1002/bit.22507>
- McAteer, P.G., Christine Trego, A., Thorn, C., Mahony, T., Abram, F., O’Flaherty, V., 2020. Reactor configuration influences microbial community structure during high-rate, low-temperature anaerobic treatment of dairy wastewater. *Bioresour. Technol.* 307, 123221. <https://doi.org/10.1016/j.biortech.2020.123221>
- McHugh, S., Carton, M., Collins, G., O’Flaherty, V., 2004. Reactor performance and microbial community dynamics during anaerobic biological treatment of wastewaters at 16–37°C. *FEMS Microbiol. Ecol.* 48, 369–378. <https://doi.org/10.1016/j.femsec.2004.02.012>
- McKeown, R.M., Hughes, D., Collins, G., Mahony, T., O’Flaherty, V., 2012. Low-temperature anaerobic digestion for wastewater treatment. *Curr. Opin. Biotechnol.* <https://doi.org/10.1016/j.copbio.2011.11.025>
- McKeown, R.M., Scully, C., Enright, A.M., Chinalia, F.A., Lee, C., Mahony, T., Collins, G., O’Flaherty, V., 2009a. Psychrophilic methanogenic community development during long-term cultivation of anaerobic granular biofilms. *ISME J.* 3, 1231–1242. <https://doi.org/10.1038/ismej.2009.67>
- McKeown, R.M., Scully, C., Mahony, T., Collins, G., O’Flaherty, V., 2009b. Long-term (1243 days), low-temperature (4–15 °C), anaerobic biotreatment of acidified wastewaters: Bioprocess performance and physiological characteristics. *Water Res.* 43, 1611–1620. <https://doi.org/10.1016/j.watres.2009.01.015>
- McMurdie, P.J., Holmes, S., 2013. Phyloseq: An R Package for Reproducible Interactive Analysis and Graphics of Microbiome Census Data. *PLoS One* 8. <https://doi.org/10.1371/journal.pone.0061217>

- Metje, M., Frenzel, P., 2005. Effect of temperature on anaerobic ethanol oxidation and methanogenesis in acidic peat from a Northern Wetland. *Appl. Environ. Microbiol.* 71, 8191–8200. <https://doi.org/10.1128/AEM.71.12.8191-8200.2005>
- Náthia-Neves, G., Berni, M., Dragone, G., Mussatto, S.I., Forster-Carneiro, T., 2018. Anaerobic digestion process: technological aspects and recent developments. *Int. J. Environ. Sci. Technol.* <https://doi.org/10.1007/s13762-018-1682-2>
- Nozhevnikova, A.N., Holliger, C., Ammann, A., Zehnder, A.J.B., 1997. Methanogenesis in sediments from deep lakes at different temperatures (2–70°C). *Water Sci. Technol.* 36, 57–64. <https://doi.org/10.2166/wst.1997.0575>
- Nozhevnikova, A.N., Russkova, Y.I., Litti, Y. V., Parshina, S.N., Zhuravleva, E.A., Nikitina, A.A., 2020. Syntrophy and Interspecies Electron Transfer in Methanogenic Microbial Communities. *Microbiol. (Russian Fed.* 89, 129–147. <https://doi.org/10.1134/S0026261720020101/TABLES/2>
- Nozhevnikova, A.N., Zepp, K., Vazquez, F., Zehnder, A.J.B., Holliger, C., 2003. Evidence for the existence of psychrophilic methanogenic communities in anoxic sediments of deep lakes. *Appl. Environ. Microbiol.* 69, 1832–1835. <https://doi.org/10.1128/AEM.69.3.1832-1835.2003>
- O'Reilly, J., Chinalia, F.A., Mahony, T., Collins, G., Wu, J., O'Flaherty, V., 2009. Cultivation of low-temperature (15°C), anaerobic, wastewater treatment granules. *Lett. Appl. Microbiol.* 49, 421–426. <https://doi.org/10.1111/j.1472-765X.2009.02682.x>
- Oksanen, J., Blanchet, F.G., Friendly, M., Kindt, R., Legendre, P., Mcglinn, D., Minchin, P.R., O'hara, R.B., Simpson, G.L., Solymos, P., Henry, M., Stevens, H., Szoecs, E., Wagner, H., Oksanen, M.J., 2018. *Community Ecology Package*.
- Pelletier, E., Kreimeyer, A., Bocs, S., Rouy, Z., Gyapay, G., Chouari, R., Rivière, D., Ganesan, A., Daegelen, P., Sghir, A., Cohen, G.N., Médigue, C., Weissenbach, J., Le Paslier, D., 2008. "Candidatus Cloacamonas acidaminovorans": Genome sequence reconstruction provides a first glimpse of a new bacterial division. *J. Bacteriol.* 190, 2572–2579. <https://doi.org/10.1128/JB.01248-07>
- Petropoulos, E., Dolfing, J., Curtis, T.P., 2017a. Methanogenic activity and growth at low temperature anaerobic wastewater treatment (4, 15 °C) using cold adapted inocula, in: *Lecture Notes in Civil Engineering*. Springer, pp. 360–367. [https://doi.org/10.1007/978-3-319-58421-8\\_58](https://doi.org/10.1007/978-3-319-58421-8_58)
- Petropoulos, E., Dolfing, J., Davenport, R.J., Bowen, E.J., Curtis, T.P., 2017b. Developing cold-adapted biomass for the anaerobic treatment of domestic wastewater at low temperatures (4, 8 and 15 °C) with inocula from cold environments. *Water Res.* 112, 100–109. <https://doi.org/10.1016/j.watres.2016.12.009>
- Petropoulos, E., Dolfing, J., Yu, Y., Wade, M.J., Bowen, E.J., Davenport, R.J., Curtis, T.P., 2018. Lipolysis of domestic wastewater in anaerobic reactors operating at low temperatures. *Environ. Sci. Water Res. Technol.* 4, 1002–1013. <https://doi.org/10.1039/C8EW00156A>
- Petropoulos, E., Shamurad, B., Tabraiz, S., Yu, Y., Davenport, R., Curtis, T.P., Dolfing, J., 2021. Sewage treatment at 4 °C in anaerobic upflow reactors with and without a membrane-performance, function and microbial diversity. *Environ. Sci. Water Res. Technol.* 7, 156–171.

<https://doi.org/10.1039/d0ew00753f>

- Petropoulos, E., Yu, Y., Tabraiz, S., Yakubu, A., Curtis, T.P., Dolfing, J., 2019. High rate domestic wastewater treatment at 15 °C using anaerobic reactors inoculated with cold-adapted sediments/soils-shaping robust methanogenic communities. *Environ. Sci. Water Res. Technol.* 5, 70–82. <https://doi.org/10.1039/c8ew00410b>
- Purdy, K.J., Nedwell, D.B., Embley, T.M., 2003. Analysis of the sulfate-reducing bacterial and methanogenic archaeal populations in contrasting antarctic sediments. *Appl. Environ. Microbiol.* 69, 3181–3191. <https://doi.org/10.1128/AEM.00943-06>
- Putzke, J., Pereira, A.B., 2020. The Vegetation of the South Shetland Islands and the Climatic Change. *Glaciers Polar Environ.* <https://doi.org/10.5772/INTECHOPEN.94269>
- R Core Team, 2013. R: A language and environment for statistical computing 2, 1–12.
- Reay, D., Smith, P., Van Amstel, A., 2010. Methane and climate change, Methane and Climate Change. London. <https://doi.org/10.4324/9781849775090>
- Ribera-Pi, J., Campitelli, A., Badia-Fabregat, M., Jubany, I., Martínez-Lladó, X., McAdam, E., Jefferson, B., Soares, A., 2020. Hydrolysis and Methanogenesis in UASB-AnMBR Treating Municipal Wastewater Under Psychrophilic Conditions: Importance of Reactor Configuration and Inoculum. *Front. Bioeng. Biotechnol.* 8. <https://doi.org/10.3389/fbioe.2020.567695>
- Rivkina, E., Petrovskaya, L., Vishnivetskaya, T., Krivushin, K., Shmakova, L., Tutukina, M., Meyers, A., Kondrashov, F., 2016. Metagenomic analyses of the late Pleistocene permafrost - Additional tools for reconstruction of environmental conditions. *Biogeosciences* 13, 2207–2219. <https://doi.org/10.5194/bg-13-2207-2016>
- Sakamoto, M., Benno, Y., 2006. Reclassification of *Bacteroides distasonis*, *Bacteroides goldsteinii* and *Bacteroides merdae* as *Parabacteroides distasonis* gen. nov., comb. nov., *Parabacteroides goldsteinii* comb. nov and *Parabacteroides merdae* comb. nov. *Int. J. Syst. Evol. Microbiol.* 56, 1599–1605. <https://doi.org/10.1099/ijs.0.64192-0>
- Saunio, M., R. Stavert, A., Poulter, B., Bousquet, P., G. Canadell, J., B. Jackson, R., A. Raymond, P., J. Dlugokencky, E., Houweling, S., K. Patra, P., Ciais, P., K. Arora, V., Bastviken, D., Bergamaschi, P., R. Blake, D., Brailsford, G., Bruhwiler, L., M. Carlson, K., Carrol, M., Castaldi, S., Chandra, N., Crevoisier, C., M. Crill, P., Covey, K., L. Curry, C., Etiope, G., Frankenberg, C., Gedney, N., I. Hegglin, M., Höglund-Isaksson, L., Hugelius, G., Ishizawa, M., Ito, A., Janssens-Maenhout, G., M. Jensen, K., Joos, F., Kleinen, T., B. Krummel, P., L. Langenfelds, R., G. Laruelle, G., Liu, L., MacHida, T., Maksyutov, S., C. McDonald, K., McNorton, J., A. Miller, P., R. Melton, J., Morino, I., Müller, J., Murguía-Flores, F., Naik, V., Niwa, Y., Noce, S., O’Doherty, S., J. Parker, R., Peng, C., Peng, S., P. Peters, G., Prigent, C., Prinn, R., Ramonet, M., Regnier, P., J. Riley, W., A. Rosentreter, J., Segers, A., J. Simpson, I., Shi, H., J. Smith, S., Paul Steele, L., F. Thornton, B., Tian, H., Tohjima, Y., N. Tubiello, F., Tsuruta, A., Viovy, N., Voulgarakis, A., S. Weber, T., Van Weele, M., R. Van Der Werf, G., F. Weiss, R., Worthy, D., Wunch, D., Yin, Y., Yoshida, Y., Zhang, W., Zhang, Z., Zhao, Y., Zheng, B., Zhu, Qing, Zhu, Qian, Zhuang, Q., 2020. The global methane budget 2000-2017. *Earth Syst. Sci. Data* 12, 1561–1623. <https://doi.org/10.5194/essd-12-1561-2020>
- Schink, B., 1997. Energetics of syntrophic cooperation in methanogenic degradation. *Microbiol. Mol. Biol. Rev.* 61, 262–280. [https://doi.org/1092-2172/97/\\$04.0010](https://doi.org/1092-2172/97/$04.0010)

- Schloss, P.D., Westcott, S.L., Ryabin, T., Hall, J.R., Hartmann, M., Hollister, E.B., Lesniewski, R.A., Oakley, B.B., Parks, D.H., Robinson, C.J., Sahl, J.W., Stres, B., Thallinger, G.G., Van Horn, D.J., Weber, C.F., 2009. Introducing mothur: Open-source, platform-independent, community-supported software for describing and comparing microbial communities. *Appl. Environ. Microbiol.* 75, 7537–7541. <https://doi.org/10.1128/AEM.01541-09>
- Shcherbakova, V., Rivkina, E., Laurinavichuis, K., Pecheritsina, S., Gilichinsky, D., 2004. Physiological characteristics of bacteria isolated from water brines within permafrost. *Int. J. Astrobiol.* 3, 37–43. <https://doi.org/10.1017/S1473550404001806>
- Shelley, F., Abdullahi, F., Grey, J., Trimmer, M., 2015. Microbial methane cycling in the bed of a chalk river: oxidation has the potential to match methanogenesis enhanced by warming. *Freshw. Biol.* 60, 150–160. <https://doi.org/10.1111/FWB.12480>
- Shelton, D.R., Tiedje, J.M., 1984. General method for determining anaerobic biodegradation potential. *Appl. Environ. Microbiol.* 47, 850–857.
- Simankova, M. V., Parshina, S.N., Tourova, T.P., Kolganova, T. V., Zehnder, A.J.B., Nozhevnikova, A.N., 2001. *Methanosarcina lacustris* sp. nov., a new psychrotolerant methanogenic archaeon from anoxic lake sediments. *Syst. Appl. Microbiol.* 24, 362–367. <https://doi.org/10.1078/0723-2020-00058>
- Singh, S., Rinta-Kanto, J.M., Kettunen, R., Lens, P., Collins, G., Kokko, M., Rintala, J., 2019. Acetotrophic activity facilitates methanogenesis from LCFA at low temperatures: Screening from mesophilic inocula. *Archaea* 2019. <https://doi.org/10.1155/2019/1751783>
- Solli, L., Håvelsrud, O.E., Horn, S.J., Rike, A.G., 2014. A metagenomic study of the microbial communities in four parallel biogas reactors. *Biotechnol. Biofuels* 7, 146. <https://doi.org/10.1186/s13068-014-0146-2>
- Stibal, M., Wadham, J.L., Lis, G.P., Telling, J., Pancost, R.D., Dubnick, A., Sharp, M.J., Lawson, E.C., Butler, C.E.H., Hasan, F., Tranter, M., Anesio, A.M., 2012. Methanogenic potential of Arctic and Antarctic subglacial environments with contrasting organic carbon sources. *Glob. Chang. Biol.* 18, 3332–3345. <https://doi.org/10.1111/j.1365-2486.2012.02763.x>
- Sumino, H., Takahashi, M., Yamaguchi, T., Abe, K., Araki, N., Yamazaki, S., Shimosaki, S., Nagano, A., Nishio, N., 2007. Feasibility study of a pilot-scale sewage treatment system combining an up-flow anaerobic sludge blanket (UASB) and an aerated fixed bed (AFB) reactor at ambient temperature. *Bioresour. Technol.* 98, 177–182. <https://doi.org/10.1016/j.biortech.2005.10.020>
- Sun, D.L., Jiang, X., Wu, Q.L., Zhou, N.Y., 2013. Intragenomic heterogeneity of 16S rRNA genes causes overestimation of prokaryotic diversity. *Appl. Environ. Microbiol.* 79, 5962–5969. [https://doi.org/10.1128/AEM.01282-13/SUPPL\\_FILE/ZAM999104727SO1.PDF](https://doi.org/10.1128/AEM.01282-13/SUPPL_FILE/ZAM999104727SO1.PDF)
- Takai, K., Inoue, A., Horikoshi, K., 1999. *Thermaerobacter marianensis* gen. nov., sp. nov., an aerobic extremely thermophilic marine bacterium from the 11,000 m deep Mariana Trench. *Int. J. Syst. Bacteriol.* 49 Pt 2, 619–628. <https://doi.org/10.1099/00207713-49-2-619>
- Uemura, S., Harada, H., 2000. Treatment of sewage by a UASB reactor under moderate to low temperature conditions. *Bioresour. Technol.* 72, 275–282. [https://doi.org/10.1016/S0960-8524\(99\)00118-2](https://doi.org/10.1016/S0960-8524(99)00118-2)

- Van, D.P., Fujiwara, T., Tho, B.L., Toan, P.P.S., Minh, G.H., 2020. A review of anaerobic digestion systems for biodegradable waste: Configurations, operating parameters, and current trends. *Environ. Eng. Res.* 25, 1–17. <https://doi.org/10.4491/eer.2018.334>
- Venkiteshwaran, K., Bocher, B., Maki, J., Zitomer, D., 2015. Relating Anaerobic Digestion Microbial Community and Process Function. *Microbiol. Insights* 8, 37–44. <https://doi.org/10.4137/MBI.S33593>
- Von Klein, D., Arab, H., Völker, H., Thomm, M., 2002. *Methanosarcina baltica*, sp. nov., a novel methanogen isolated from the Gotland Deep of the Baltic Sea. *Extremophiles* 6, 103–110. <https://doi.org/10.1007/s007920100234>
- Wagner, D., Gattinger, A., Embacher, A., Pfeiffer, E.M., Schloter, M., Lipski, A., 2007. Methanogenic activity and biomass in Holocene permafrost deposits of the Lena Delta, Siberian Arctic and its implication for the global methane budget. *Glob. Chang. Biol.* <https://doi.org/10.1111/j.1365-2486.2007.01331.x>
- Wagner, D., Lipski, A., Embacher, A., Gattinger, A., 2005. Methane fluxes in permafrost habitats of the Lena Delta: Effects of microbial community structure and organic matter quality. *Environ. Microbiol.* <https://doi.org/10.1111/j.1462-2920.2005.00849.x>
- Wang, Y., Qian, P.Y., 2009. Conservative fragments in bacterial 16S rRNA genes and primer design for 16S ribosomal DNA amplicons in metagenomic studies. *PLoS One* 4, e7401. <https://doi.org/10.1371/journal.pone.0007401>
- Whitman, W.B., Bowen, T.L., Boone, D.R., 2006. The Methanogenic Bacteria, in: Dworkin, M., Falkow, S., Rosenberg, E., Schleifer, K., Stackebrandt, E. (Eds.), *The Prokaryotes*. Springer New York, New York, NY, pp. 165–207. [https://doi.org/10.1007/0-387-30743-5\\_9](https://doi.org/10.1007/0-387-30743-5_9)
- Xing, W., Zhao, Y., Zuo, J. -e., 2010. Microbial activity and community structure in a lake sediment used for psychrophilic anaerobic wastewater treatment. *J. Appl. Microbiol.* 109, no-no. <https://doi.org/10.1111/j.1365-2672.2010.04809.x>
- Yang, S., Liebner, S., Winkel, M., Alawi, M., Horn, F., Dörfer, C., Ollivier, J., He, J. sheng, Jin, H., Kühn, P., Schloter, M., Scholten, T., Wagner, D., 2017. In-depth analysis of core methanogenic communities from high elevation permafrost-affected wetlands. *Soil Biol. Biochem.* 111, 66–77. <https://doi.org/10.1016/j.soilbio.2017.03.007>
- Yarzabal, L.A., 2016. Antarctic Psychrophilic Microorganisms and Biotechnology: History, Current Trends, Applications, and Challenges, in: *Microbial Models: From Environmental to Industrial Sustainability*. Springer Singapore, pp. 83–118. [https://doi.org/10.1007/978-981-10-2555-6\\_5](https://doi.org/10.1007/978-981-10-2555-6_5)
- Zeikus, J.G., 1977. The biology of methanogenic bacteria. *Bacteriol. Rev.* 41, 514–541.
- Zhang, G., Jiang, N., Liu, X., Dong, X., 2008. Methanogenesis from methanol at low temperatures by a novel psychrophilic methanogen, “*Methanolobus psychrophilus*” sp. nov., prevalent in Zoige wetland of the Tibetan plateau. *Appl. Environ. Microbiol.* 74, 6114–6120. [https://doi.org/10.1128/AEM.01146-08/SUPPL\\_FILE/SUPPLEMENT\\_MATERIAL.ZIP](https://doi.org/10.1128/AEM.01146-08/SUPPL_FILE/SUPPLEMENT_MATERIAL.ZIP)
- Zhang, G., Niu, F., Ma, X., Liu, W., Dong, M., Feng, H., An, L., Cheng, G., 2007. Phylogenetic diversity of bacteria isolates from the Qinghai-Tibet Plateau permafrost region. *Can. J. Microbiol.* 53, 1000–10. <https://doi.org/10.1139/W07-031>



Zhang, Y., Guo, B., Zhang, L., Liu, Y., 2020. Key syntrophic partnerships identified in a granular activated carbon amended UASB treating municipal sewage under low temperature conditions. *Bioresour. Technol.* 312, 123556. <https://doi.org/10.1016/j.biortech.2020.123556>

Table 1: Kinetic parameters of the Antarctic inoculum obtained from incubations along a temperature gradient. MPR stands for methane (CH<sub>4</sub>) production rate. R1 and R2 indicate the batch replicates.

Temperature (°C)	MPR (nmol CH <sub>4</sub> g <sup>-1</sup> DW d <sup>-1</sup> )		MPR (mL CH <sub>4</sub> g <sup>-1</sup> VS d <sup>-1</sup> )		Yield (mmol CH <sub>4</sub> g <sup>-1</sup> COD)		Latency period (days)	
	R1	R2	R1	R2	R1	R2	R1	R2
5	4275	4314	2.7	2.7	8.6	8.2	37	37
10	4391	4005	2.8	2.5	8.5	7.9	24	24
15	5720	5658	3.6	3.6	8.4	8.3	17	17
20	6262	6553	3.9	4.1	8.2	8.3	10	10
25	8891	9218	5.6	5.8	10.9	11.4	10	10
30	8540	8185	5.4	5.2	11.4	10.6	10	10
37	6489	6343	4.1	4.0	10.7	10.9	22	22

Table 2: Published data reporting CH<sub>4</sub> production rates (MPR) in different soil/sediment samples from low temperature ecosystems.

Latitude	Origin	Sample type	Acetate amendment concentration (mM)	Incubation temperature (°C)	MPR (nmol CH <sub>4</sub> d <sup>-1</sup> g <sup>-1</sup> DW)	Reference
<i>Northern hemisphere</i>						
72° N	Siberia	Peat	20	0.4 - 7.5	170 - 1 560	(Wagner et al., 2005)
72° N	Siberia	Permafrost	10	5	1 - 120	(Wagner et al., 2007)
71° N	Alaska	Lake sediments	2	4 - 10	3 400 - 4 700	(de Jong et al., 2018)
68° N	Alaska	Lake sediments	1	10	1 000 - 9 000	(Lofton et al., 2015)
50° N	Germany	Peat swamp	5	20	8	(Horn et al., 2003)
46° N	Swiss Alps	Lake sediments	5-10	6 - 30	370 - 2 940	(Nozhevnikova et al., 1997)
37° N	Tibetan Plateau	Swamp wetland	10	10	60.9 - 552.7	(Yang et al., 2017)
<i>Southern hemisphere</i>						
53-54° S	Sub-Antarctic	Lake and reservoir sediments	30	5 - 20	590 - 50 280	(Lavergne et al., 2021)
62-63° S	Antarctica	Soil and sediments	30	5 - 25	4 295 - 9 055	This study
69° S	Antarctica	Subglacial sediments	10	1 - 12	0.04 - 0.2	(Ma et al., 2018)

Table 3: Bibliographic survey of methanogenic activity of low temperature anaerobic digesters (LTAD), obtained in batch tests with acetate amendment. UASB= Upflow Anaerobic Sludge Bed; EGSA-AF = Expanded Granular Sludge Bed- Attached Film; EGSA = Expanded Granular Sludge Bed; UASB-GAC = Upflow Anaerobic Sludge Bed- Granular Activated Carbon; AnMBR = Anaerobic Membrane Bioreactor. Seed = unadapted inoculum, initial time in reactor, Adapted = inoculum with previous adaptation period inside the reactor at low temperature.

Reactor type	Waste type	Sample type	Operation characteristics of the reactor		Batch Tests			Reference
			Operating period (days)	Operating temperature (°C)	Acetate amendment concentration (mM)	Temperature for MPR (°C)*	MPR (mL CH <sub>4</sub> g <sup>-1</sup> VS d <sup>-1</sup> )	
Batch	Acetate	Soil and Sediment	10-37	5-25	30	5-25	2.71 – 5.71	This study
UASB	Sewage	Adapted	178	13	33.3	13	28.0	(Uemura and Harada, 2000)
UASB	Synthetic Waste water	Seed	0	37	30	22	0.9	(McHugh et al., 2004)
		Adapted	165 - 300	16 - 25	30	15 - 22	14.7 - 31.0	
EGSB-AF	Synthetic waste water	Seed	0	20	30	15	24.8	(Collins et al., 2006)
		Adapted	111 - 250	18-20	30	15	117.0 - 516.0	
UASB	Sewage	Adapted	236	9.7-27.1	33.3	10	1.8	(Sumino et al., 2007)
UASB	Synthetic waste water	Seed	0	37	12	15	36.0	(Akila and Chandra, 2007)
		Adapted	630	15	12	15	134.4	
HUSB/UASB	Domestic waste water	Seed	0	NR	16.7	20	9.1 – 17.5	(Álvarez et al., 2008)
		Adapted	76 - 97	13.1 - 17	16.7	13.1 - 17	8.8 – 18.9	
EGSB-AF	Synthetic waste water	Seed	0	37	30	15	31.0	(McKeown et al., 2009b)
		Adapted	673 - 1243	4 - 9.5	30	4 - 15	17.0 – 83.0	
EGSB-AF	Synthetic waste water	Adapted	218 - 313	9 - 12	30	15	145.0 - 342.0	(Enright et al., 2009)
EGSB	Synthetic waste water	Seed	0	NR	30	15	0.0	(O'Reilly et al., 2009)
		Adapted	66 - 194	15 - 37	30	15	11.0 – 44.0	
EGSB-AF	Synthetic waste water	Seed	0	30	30	15	21.5	(Mad den et al., 2010)
		Adapted	202 - 361	15	30	15	12.9 - 66.5	
AnMBR	Synthetic waste water	Adapted	15 - 75	15 - 25	10	15 - 25	7.0 – 66.5	(Ho and Sung, 2010)
EGSB	Waste water	Adapted	355	10	30	10	38.0	(Bialek et al., 2013)
Hybrid sludge bed/fixed-film	Synthetic sewage	Seed	0	35	30	12	7.0	(Keating et al., 2018)
		Adapted	105 - 889	12	30	12	0 - 51.0	

Reactor								
UASB-EGSB	Synthetic waste water	Seed	0	37	30	15	4.3	(McAt eer et al., 2020)
		Adapted	110 - 443	15 - 37	30	15	16.6 – 65.8	
UASB/UASB-GAC	Municipal waste water	Adapted	30 - 120	20	16.7	20	13.8 – 93.9	(Zhan g et al., 2020)

\* For the MPR determination, a subsample from the reactor is incubated in sealed vials. Temperature for the MPR determination sometimes vary from the operating temperature of the reactors.

Journal Pre-proof

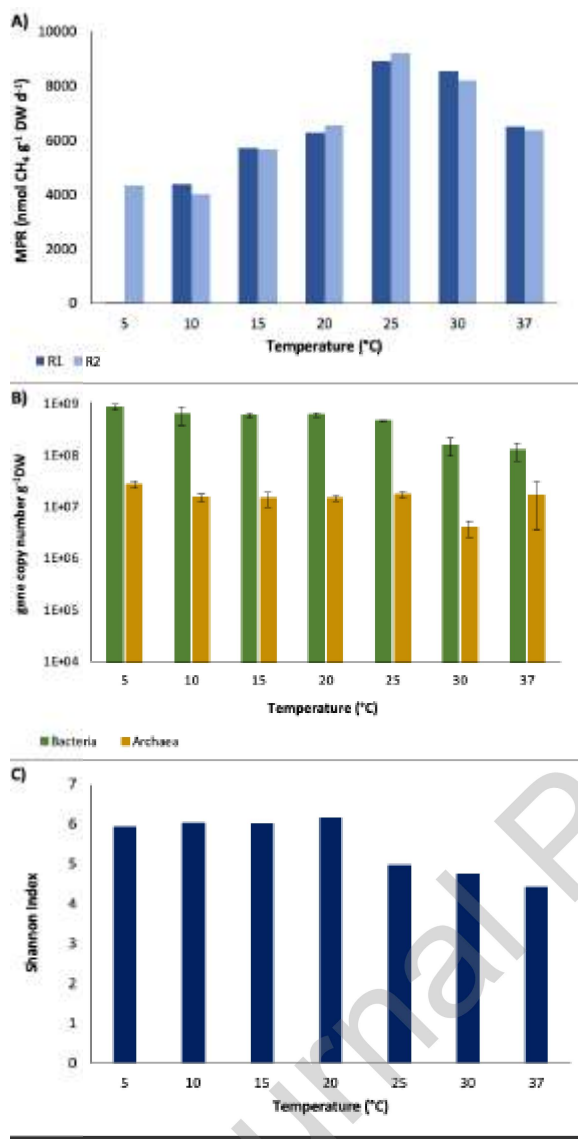


Figure 1: A) Methane production rate (MPR) of Antarctic inoculum, R1 and R2 indicate the batch replicates; B) Absolute abundance of bacteria and archaea from the Antarctic inoculum incubated at different temperatures (Bacteria= bacterial 16S rRNA gene, Archaea= archaeal 16S rRNA gene); C) Shannon index of Antarctic inoculum. In the panel B), errors bars represented the standard deviation (n = 4).

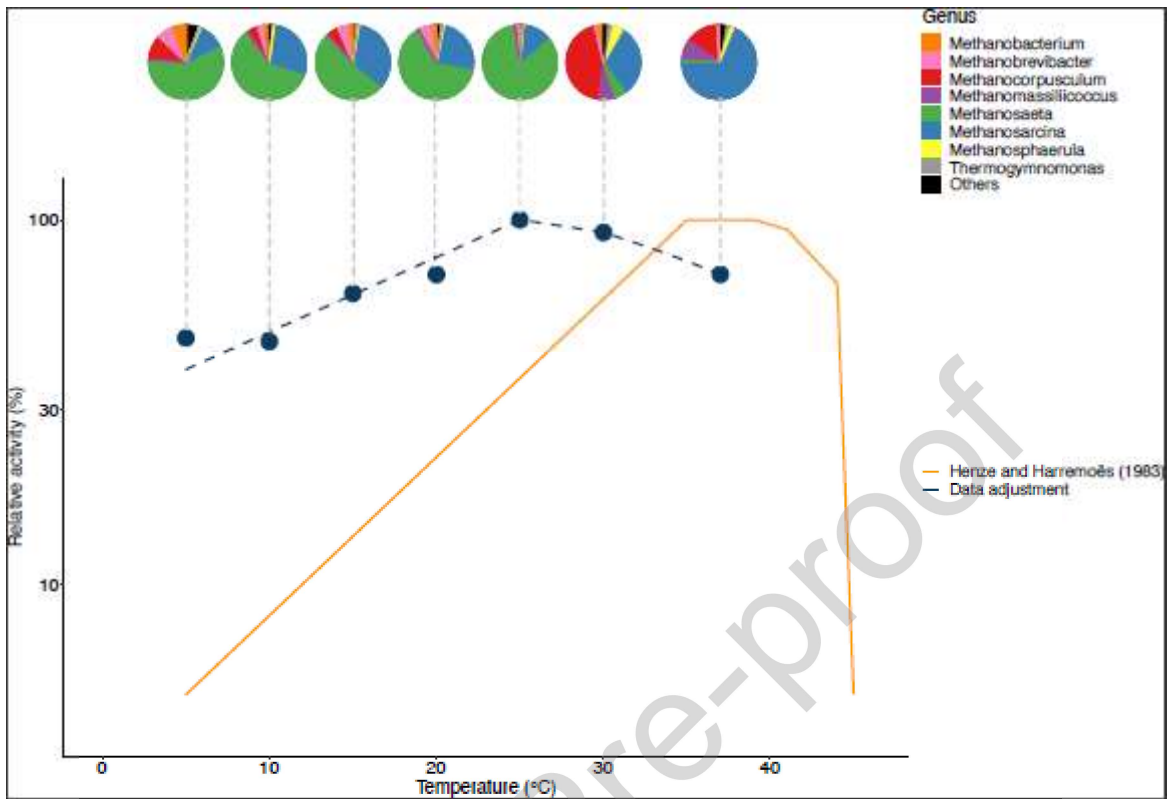


Figure 2: Relative MPR (expressed as a percentage of maximal MPR) in function of temperature for the Antarctic inoculum (in blue) and 32 conventional mesophilic reactors (in orange; Henze and Harremoës, 1983). Note that the y-axis represented the log-transformed percentage of maximal MPR. The pie charts represented the methanogen composition in the Antarctic inoculum at the genus level.

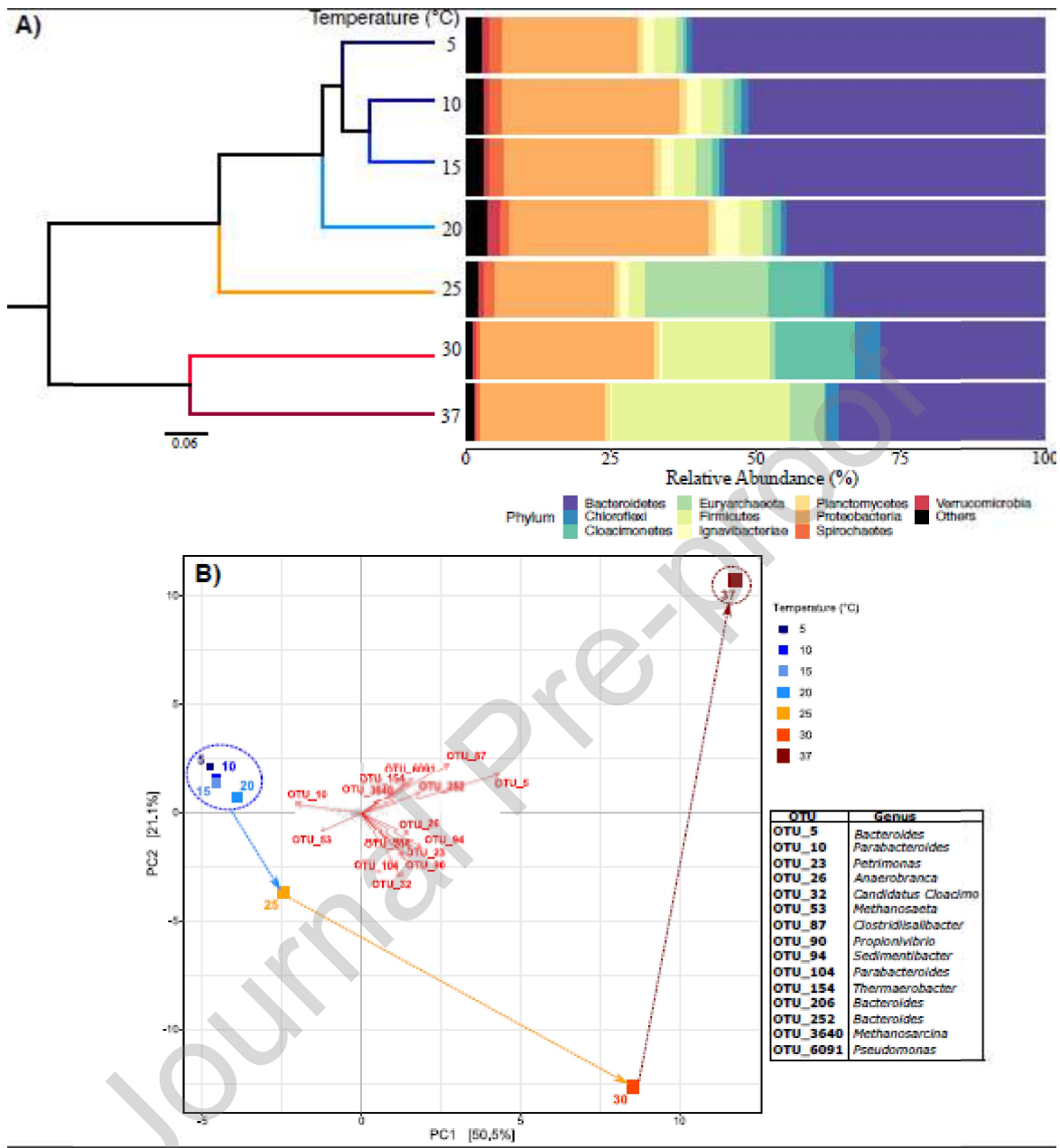


Figure 3: Microbial community structure of Antarctic inoculum incubated at different temperatures. A) Taxonomic composition at the phylum level (ten most abundant phyla). The clustering is based on Bray Curtis distance and calculated with the UPGMA method. B) Principal component analysis (PCA) based on Bray Curtis distance from 16S rRNA gene diversity of the Antarctic inoculum incubated at different temperatures. The 15 most discriminant OTUs are

plotted in red (identified as described in the Material and Method section). Taxonomic affiliation of the discriminant OTUs is indicated in the table on the right.

#### **CRedit authorship contribution statement**

**Polette Aguilar-Muñoz:** Conceptualization, Methodology, Investigation, Writing; **Céline Lavergne:** Investigation, Supervision, Writing, review & editing; **Rolando Chamy:** Resources; **Léa Cabrol:** Conceptualization, Methodology, Investigation, Supervision, Writing, review & editing

#### **Declaration of Competing Interest**

The authors declare that they have no known competing financial interests or personal relationships that could have appeared to influence the work reported in this paper.

#### **Highlights**

- Antarctic sediments are suitable for low-organic load residue treatment in cold regions
- Methanogenic activity and microbial community are affected by temperature (5-37 °C)
- Maximum methane production rate at 25 °C
- *Methanosaeta* was the predominant archaea between 5 and 25 °C
- At low temperature Antarctic inoculum was 40% more efficient than mesophilic sludge