



# Somatosensory prediction in preschool children: a preliminary ERP study

A-L Marais, M Anquetil, V Dumont, Nadege Roche-Labarbe

## ► To cite this version:

A-L Marais, M Anquetil, V Dumont, Nadege Roche-Labarbe. Somatosensory prediction in preschool children: a preliminary ERP study. OHBM 2022, Jun 2022, Glasgow, France. 2022, 10.13140/RG.2.2.19413.29926 . hal-03994378

**HAL Id: hal-03994378**

**<https://hal.science/hal-03994378>**

Submitted on 17 Feb 2023

**HAL** is a multi-disciplinary open access archive for the deposit and dissemination of scientific research documents, whether they are published or not. The documents may come from teaching and research institutions in France or abroad, or from public or private research centers.

L'archive ouverte pluridisciplinaire **HAL**, est destinée au dépôt et à la diffusion de documents scientifiques de niveau recherche, publiés ou non, émanant des établissements d'enseignement et de recherche français ou étrangers, des laboratoires publics ou privés.



## 01 THEORETICAL BACKGROUND

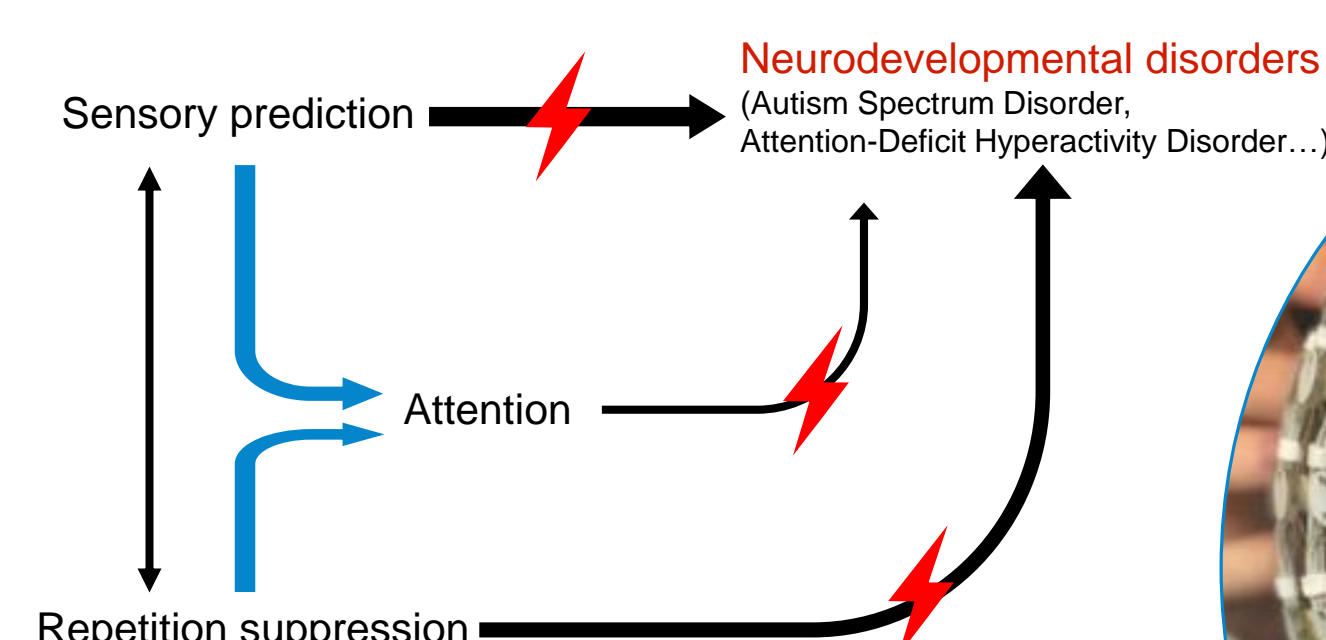
### Predictive coding

- Predictive coding** proposes that the brain is inherently predictive about the environment (Friston, 2005). These predictions can be observed through various phenomena such as:
  - sensory prediction**, the neural anticipation of future stimulation on the basis of previous sensory inputs
  - repetition suppression**, the decrease of cerebral activity when a stable representation of a repeated stimulation is formed, thus correctly predicted
- Predictions are **necessary to optimize** behavioral responses and the use of **attentional** and **energy resources**
- Sensory prediction and repetition suppression can be **altered in neurodevelopmental disorders** (NDD) like attention deficit disorders (Gonzalez-Gadea *et al.*, 2015)
- Predictive abilities were recently described in preterm infants in the tactile modality (Dumont *et al.*, 2022)

### Tactile modality



- Touch is the **earliest** sensory modality to develop
- Somatosensory inputs are numerous from birth and touch ontogenetic anteriority makes it the **foundation of neurosensory integration, and motor, cognitive and affective development** (Casco, 2010)
- The tactile modality and the cognitive functions relying on it are often **altered in NDD** (Zoenen & Delvenne, 2018)
- Somatosensory processing does not receive the scientific attention that it should given its relevance to NDD



## 02 AIM & HYPOTHESIS

### Investigate somatosensory prediction and repetition suppression from 2 to 6 years old in neurotypical children

Before studying its deficits in NDD

### Hypothesis

We hypothesize that children will have a **repetition suppression in the somatosensory cortex**, thus a decrease of the neuronal activation between the **familiarization** and the **control** phases.

We hypothesize that children will have a stronger **early response to deviance** in the **somatosensory cortex** and a **late frontal response**.

We hypothesize that children will have a recovery of activity **after an omission (PostOm)** in the **somatosensory cortex** and a **late frontal response**.

## 03 MATERIAL & METHODS

### Aimed population

2 years old  
N = 20 Terms

4 years old  
N = 20 Terms

6 years old  
20 NDD  
20 Typical

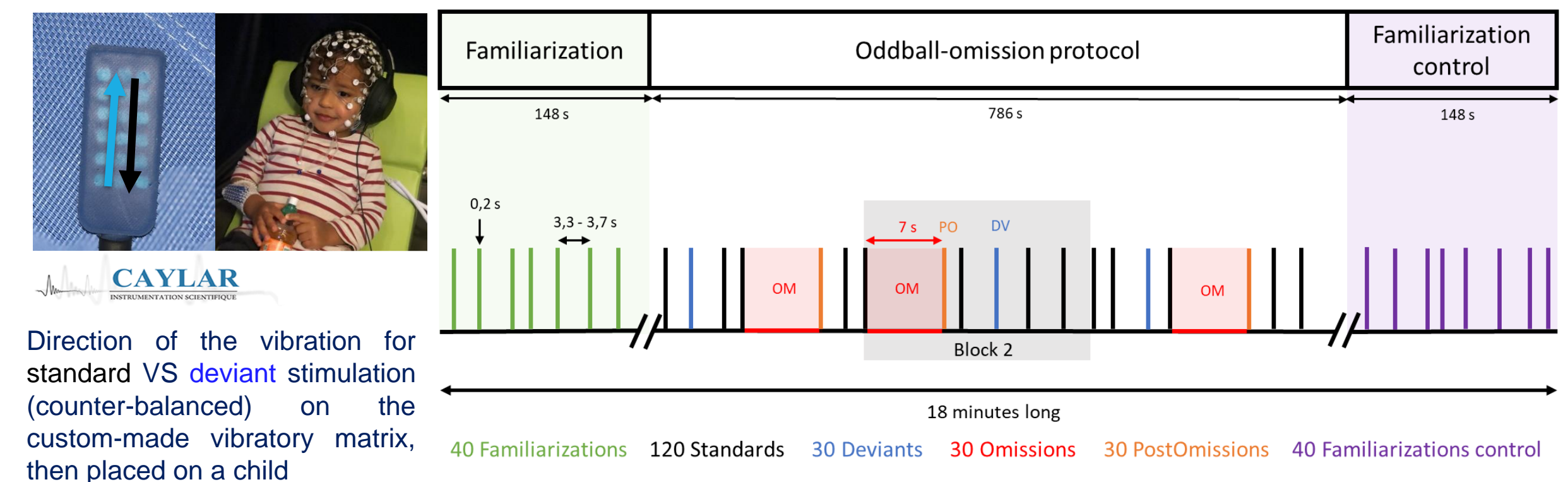
### Current population

2 years old  
N = 7 (29.14±4 months ; 1 girl)

4 years old  
N = 8 (52.5±4.6 months ; 4 girls)

6 years old  
N = 3 (72.3±0.6 months ; 3 girls)

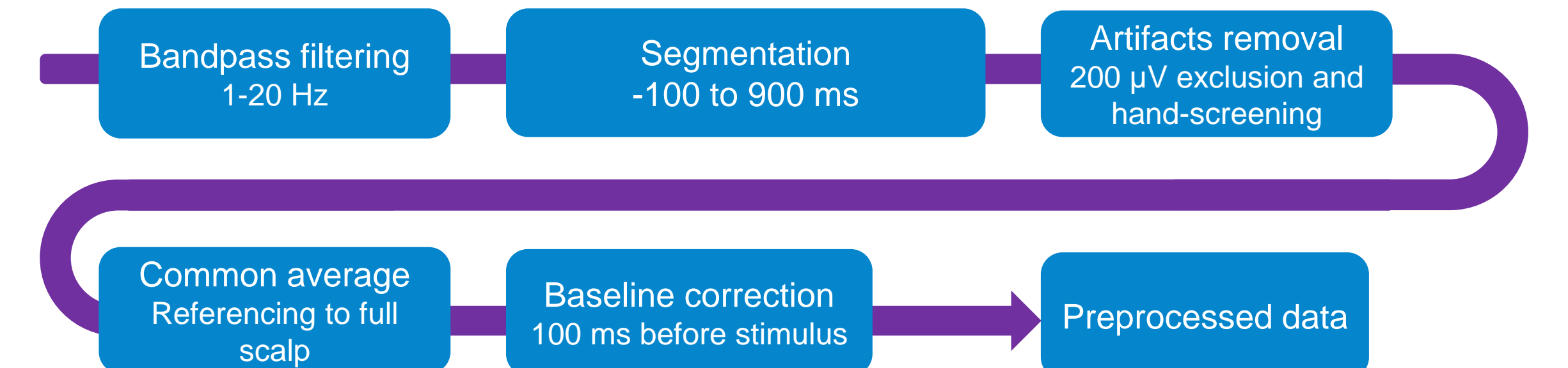
### Oddball-omission protocol



Direction of the vibration for standard VS deviant stimulation (counter-balanced) on the custom-made vibratory matrix, then placed on a child

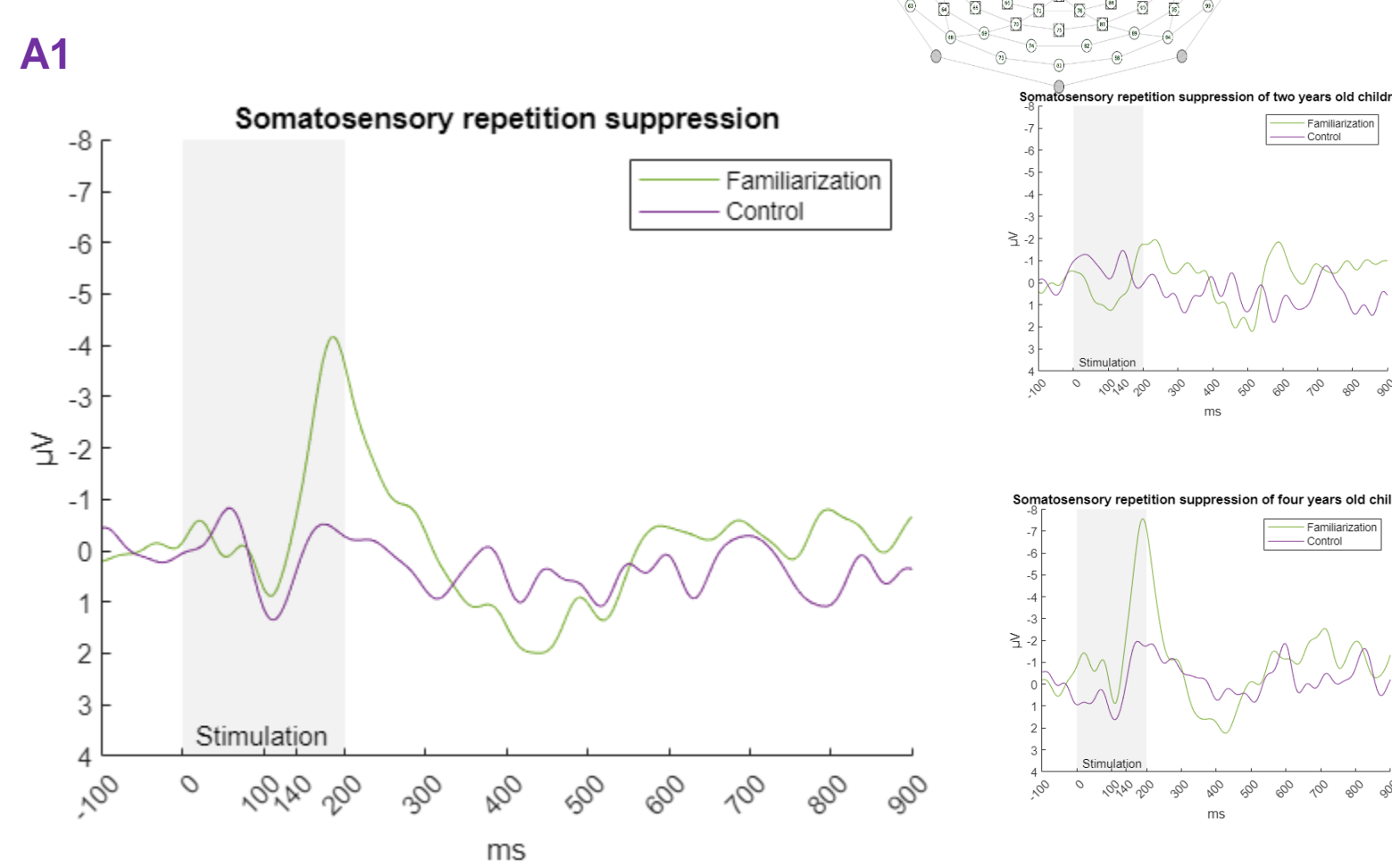
### EEG acquisition and preprocessing

128 channels EEG (Magstim EGI, Eugene OR, USA), sampling rate : 1000 Hz

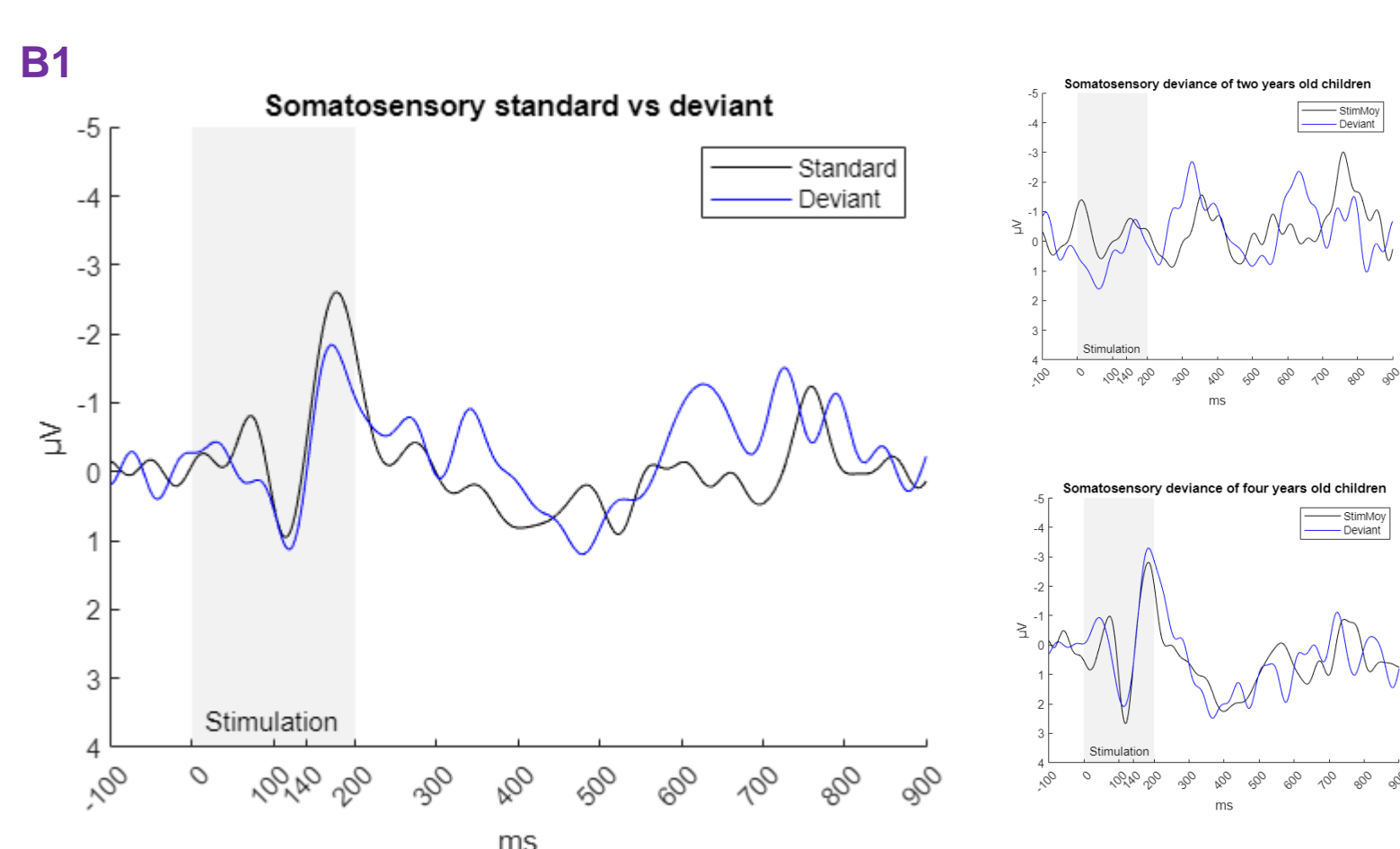


## 04 DESCRIPTIVE RESULTS

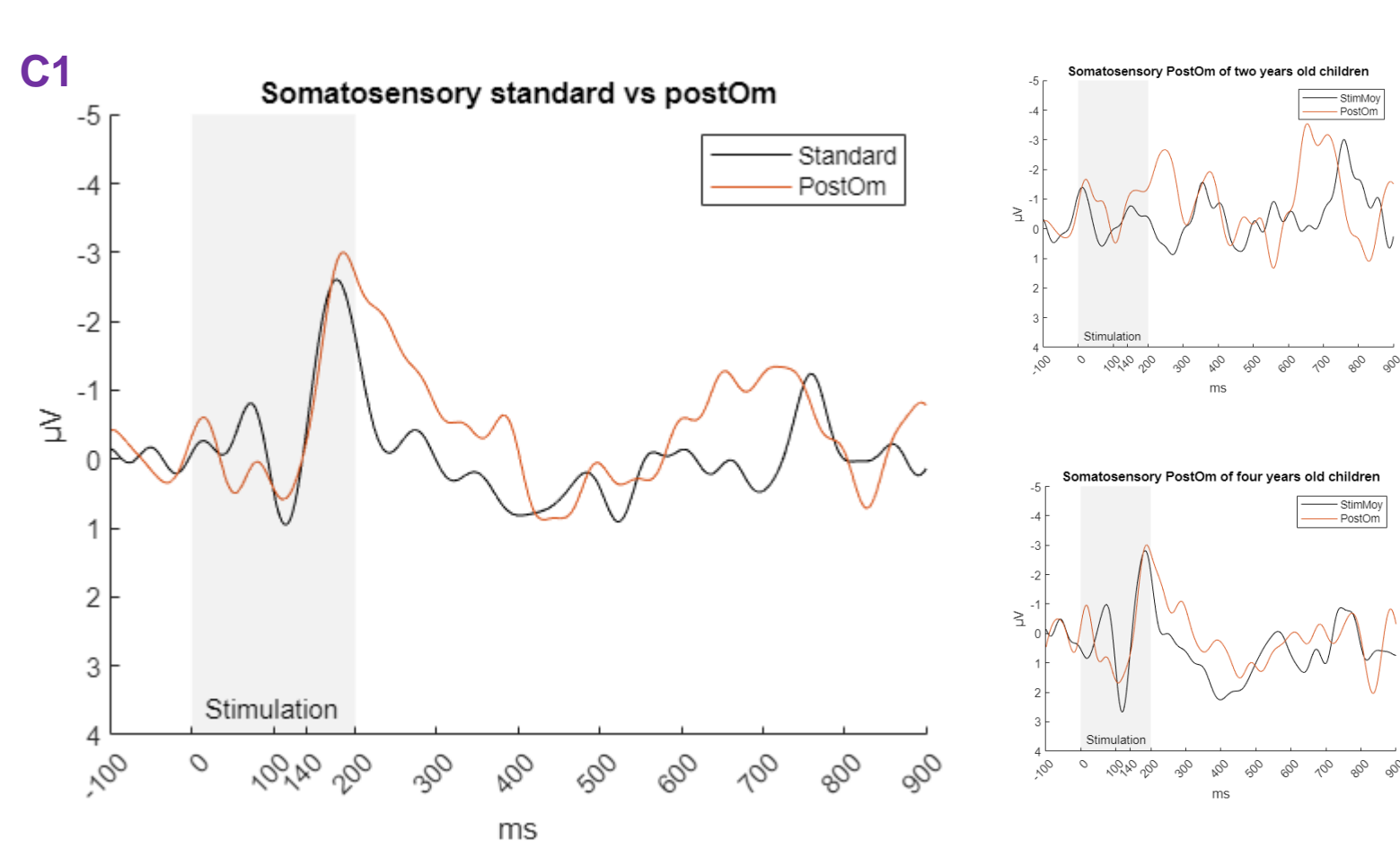
### Somatosensory analysis



The amplitude of the electrical activity decreases at N140 and P400 for the last 40 stimulations (Control) compared to the first 40 stimulations (Familiarization) in the somatosensory cortex.

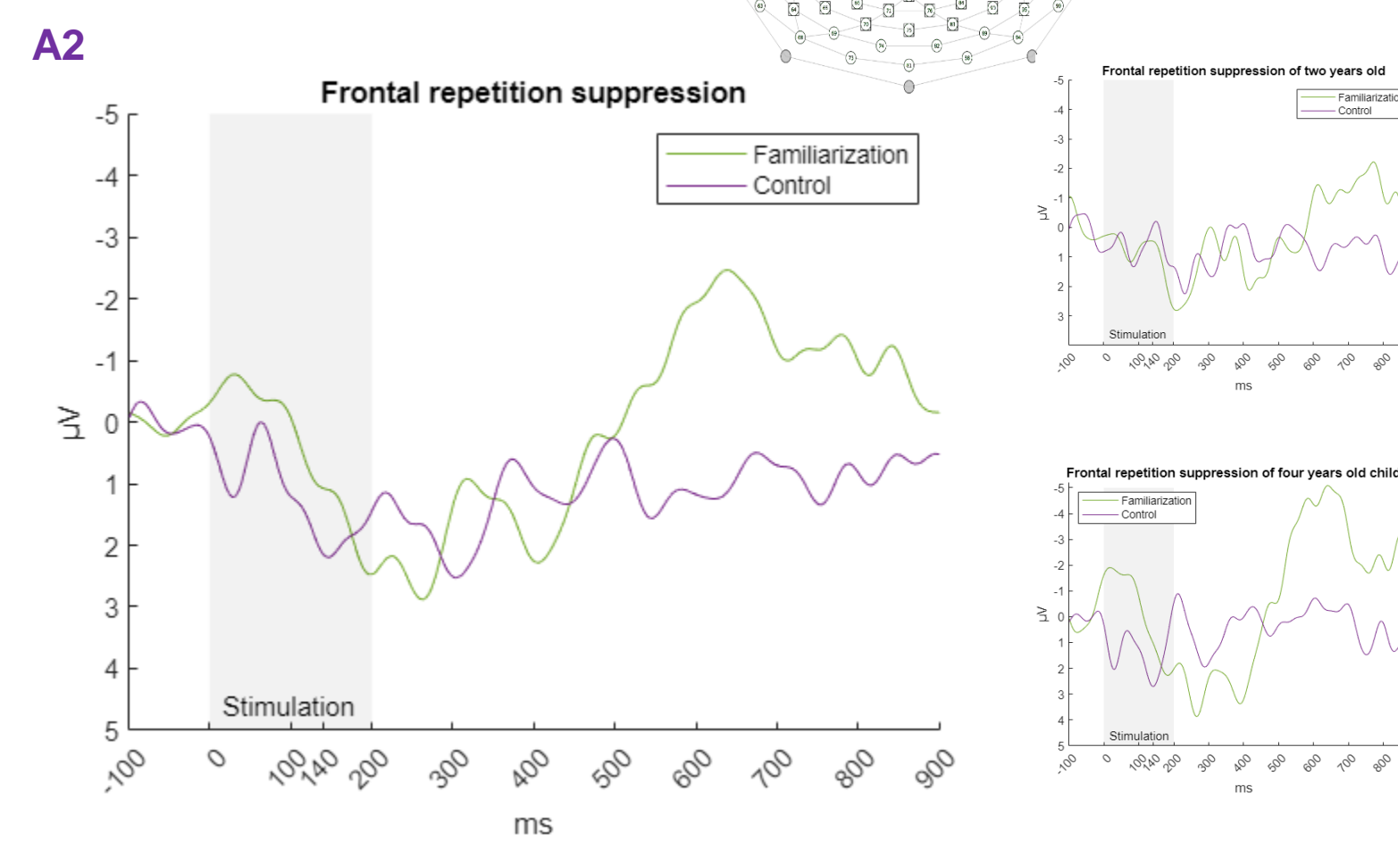


The amplitude of the electrical activity decreases at N140 for the deviant stimulations compared to the standard stimulations in the somatosensory cortex.

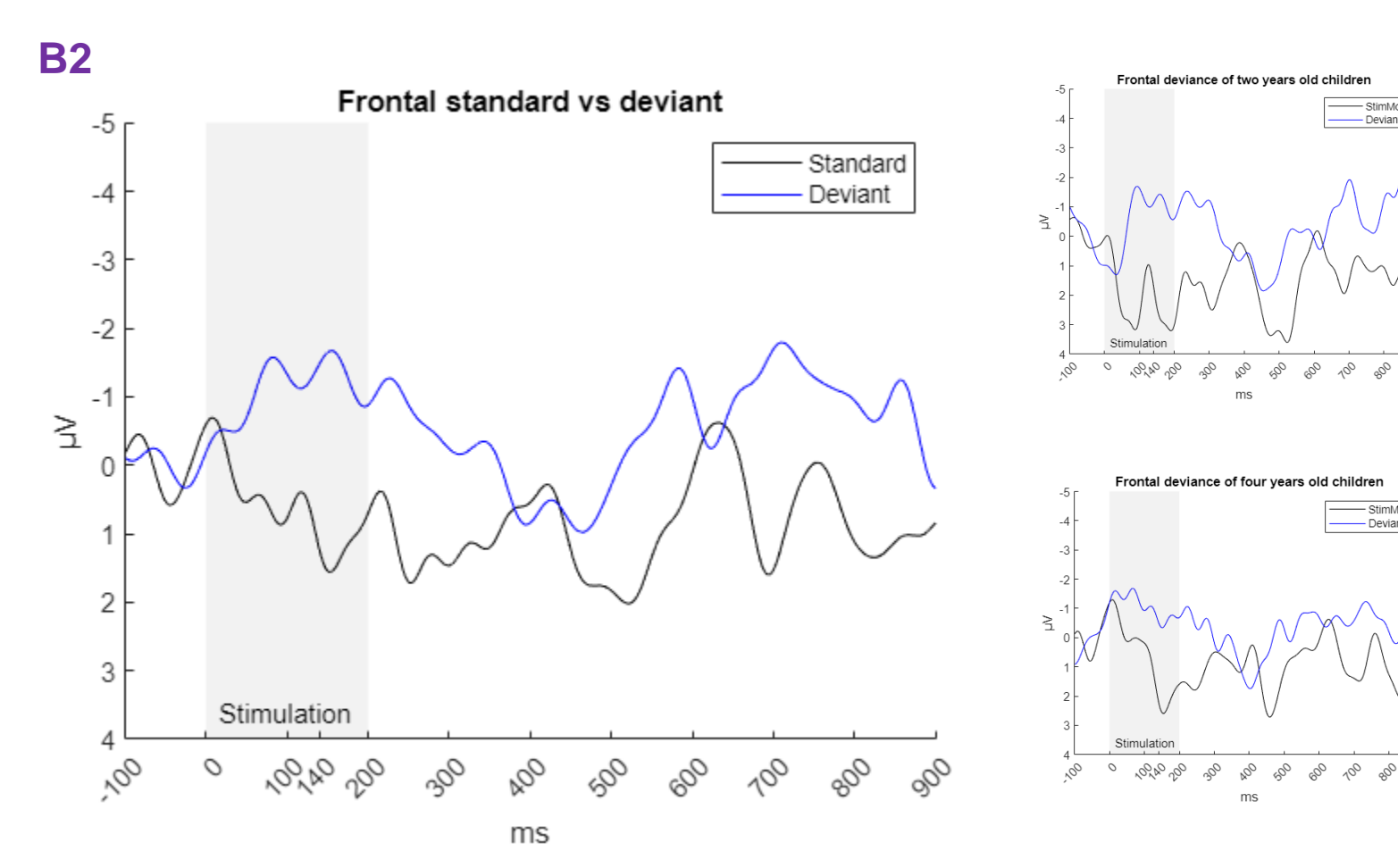


The amplitude of the electrical activity increases at N140 for the post omissions stimulations compared to the standard stimulations in the somatosensory cortex.

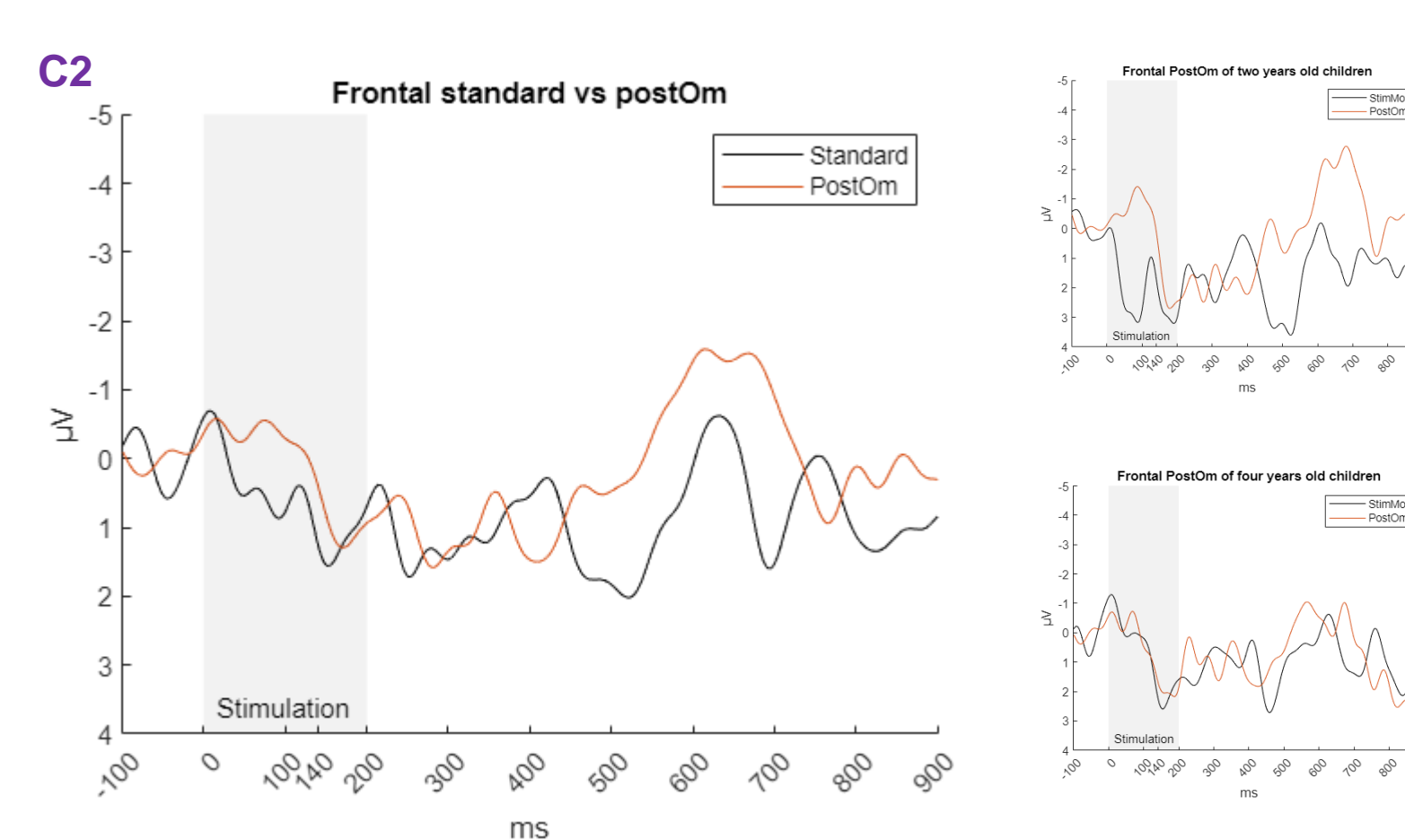
### Frontal analysis



The amplitude of the electrical activity decreases at the late negative components for the last 40 stimulations (Control) compared to the first 40 stimulations (Familiarization) in the frontal cortex.



The amplitude of the electrical activity increases at early components from 50 to 400 ms and late components from 500 ms after stimulus onset for the deviant stimulations compared to the standard stimulations in the frontal cortex.



The amplitude of the electrical activity increases at the late negative components from 500 ms after stimulation for the post omissions stimulations compared to the standard stimulation in the frontal cortex.

## 06 REFERENCES

- Basirat A, Dehaene S, Dehaene-Lambertz G. (2014). A hierarchy of cortical responses to sequence violations in three-month-old infants. *Cognition*, 132(2), 137-50. doi: 10.1016/j.cognition.2014.03.013
- Dehaene-Lambertz, G., & Dehaene, S. (1994). Speed and cerebral correlates of syllable discrimination in infants. *Nature*, 370(6487), 292-295. https://doi.org/10.1038/370292a0
- Casico, C. J. (2010). Somatosensory processing in neurodevelopmental disorders. *Journal of Neurodevelopmental Disorders*, 2(2), 62-69. https://doi.org/10.1007/s11689-010-9046-3
- Dumont, V., Giovannella, M., Zuba, D., Clouard, R., Durduran, T., Guillois, B. & Roche-Labarbe, N. (2022). Prediction of tactile stimuli in the premature newborn brain. in prep
- Friston, K. (2005). A theory of cortical responses. *Philosophical Transactions of the Royal Society B: Biological Sciences*, 360(1456), 815-836. https://doi.org/10.1098/rstb.2005.1622
- Gonzalez-Gadea, M. L., Chennu, S., Bekinschtein, T. A., Rattazzi, A., Beraudi, A., Tripicchio, P., Moyano, B., Soffici, Y., Steinberg, L., Adolli, F., Sigman, M., Marino, J., Manes, F., & Ibanez, A. (2015). Predictive coding in autism spectrum disorder and attention deficit hyperactivity disorder. *Journal of Neurophysiology*, 114(5), 2625-2636. https://doi.org/10.1152/jn.00543.2015
- Nelson, C., Ellis, A., Collins, P., Lang, S. (1990). Infants neuroelectric responses to missing stimuli: can missing stimuli be novel stimuli? *Developmental neuropsychology*, 6(4), 339-349.
- Spackman, L. A., Towell, A., & Boyd, S. G. (2010). Somatosensory discrimination: An intracranial event-related potential study of children with refractory epilepsy. *Brain Research*, 1310, 68-76. https://doi.org/10.1016/j.brainres.2009.10.072
- Zoenen, D., & Delvenne, V. (2018). Treatment of sensory information in neurodevelopmental disorders. *Reve Medecale de Bruxelles*, 39(1), 29-34. https://doi.org/10.30637/2018.17-073

## 05 DISCUSSION

- Repeated stimulations** elicit weaker event-related activity in both somatosensory and frontal cortices: we observe **repetition suppression** in children from 2 years old
- We do not observe a strong difference in ERPs evoked by **deviant** stimuli in the somatosensory cortex compared to standards. In the frontal cortex, there is a mismatch negativity: the early negative component is also found in the auditory modality in babies (Dehaene-Lambertz & Dehaene, 1994) and explained as a consequence of the prediction error. The late negative component during the **deviance** was also found in the auditory modality in babies and in the somatosensory modality in children and was argued as an attentional process (Basirat, Dehaene & Dehaene-Lambertz, 2014 ; Spackman *et al.*, 2010)
- During the **post omission**, there is a slight increase of electrical activity at N140 in the somatosensory cortex suggesting a prediction error during the omission. In the frontal cortex, as for the deviance there is a late negative component during the **post omission** whereas Nelson *et al.* (1990) observed a frontal positive slow wave in the frontal cortex during a visual auditory oddball protocol in children.


### Conclusion

Typically developing preschool children from 2 years of age are able to form predictions and detect an error in the environment using the somatosensory modality. The late negative components found during the **deviance** and the **post omission** in the frontal cortex suggest that these prediction mechanisms could rely on a common frontal process as suggested by the predictive coding theory


## 07 ABOUT US




Anne-Lise Marais, PhD student




Marie Anquetil, PhD student




Victoria Dumont, PhD



Nadège Roche-Labarbe, PhD




@Annelisephd



https://annelisemarais.github.io/




https://github.com/annelisemarais



anne-lise.marais@unicaen.fr



DECODE



https://decode.unicaen.fr/