



HAL
open science

Brief communication: Weak control of snow avalanche deposit volumes by avalanche path morphology

Hippolyte Kern, Nicolas Eckert, Vincent Jomelli, Delphine Grancher, Michael Deschatres, Gilles Arnaud-Fassetta

► **To cite this version:**

Hippolyte Kern, Nicolas Eckert, Vincent Jomelli, Delphine Grancher, Michael Deschatres, et al.. Brief communication: Weak control of snow avalanche deposit volumes by avalanche path morphology. *The Cryosphere*, 2021, 15 (10), pp.4845-4852. 10.5194/tc-15-4845-2021 . hal-03993329

HAL Id: hal-03993329

<https://hal.science/hal-03993329v1>

Submitted on 14 Apr 2023

HAL is a multi-disciplinary open access archive for the deposit and dissemination of scientific research documents, whether they are published or not. The documents may come from teaching and research institutions in France or abroad, or from public or private research centers.

L'archive ouverte pluridisciplinaire **HAL**, est destinée au dépôt et à la diffusion de documents scientifiques de niveau recherche, publiés ou non, émanant des établissements d'enseignement et de recherche français ou étrangers, des laboratoires publics ou privés.



Distributed under a Creative Commons Attribution 4.0 International License



Brief communication: Weak control of snow avalanche deposit volumes by avalanche path morphology

Hippolyte Kern¹, Nicolas Eckert², Vincent Jomelli^{1,3}, Delphine Grancher¹, Michael Deschatres³, and Gilles Arnaud-Fassetta⁴

¹Université Paris 1 Panthéon-Sorbonne, LGP-CNRS, 1 place Aristide Briand, Meudon, France

²UR ETNA, INRAe, Université Grenoble Alpes, Grenoble, France

³Aix-Marseille University, CNRS, IRD, Coll. France, INRAE, CEREGE, 13545 Aix-en-Provence, France

⁴Université de Paris, UMR 8586 PRODIG, 8, rue Albert Einstein, 75013 Paris, France

Correspondence: Hippolyte Kern (hippolyte.kern@lgp.cnrs.fr)

Received: 26 March 2021 – Discussion started: 15 April 2021

Revised: 6 August 2021 – Accepted: 10 August 2021 – Published: 14 October 2021

Abstract. Snow avalanches are a major component of the mountain cryosphere, but little is known about the factors controlling the variability of their deposit volumes. This study investigates the influence of avalanche path morphology on ca. 1500 deposit volumes recorded between 2003 and 2018 in 77 snow avalanche paths of the French Alps. Different statistical techniques show a slight but significant link between deposit volumes and path mean elevation and orientation, with contrasted patterns between winter and spring seasons. The limited and partially non-linear nature of this control may result from the combined influence on the genesis of deposit volumes of mean path activity, climate conditions, and mechanical thresholds determining avalanche release.

1 Introduction

Snow avalanches are a major component of the mountain cryosphere (Beniston et al., 2018) that often put people, settlements and infrastructures at risk. These gravitational processes result in rapid and complex snow flows (Mc Clung and Gauer, 2018). Despite significant progress over recent years regarding the mechanical behavior of snow in motion and related flow regimes (Köhler et al., 2018), critical aspects of snow avalanche dynamics remain less known, such as the factors controlling deposit volumes. This limited knowledge is surprising as snow avalanche deposit characteristics determine the damage and disturbance to people,

buildings, and communication networks (Leone et al., 2014). Previous work documented the sedimentological characteristics of snow avalanche deposits (Jomelli and Bertran, 2001; Bartelt et al., 2009). It has also been observed that snow characteristics may vary from the starting zone to the deposit area (Jomelli, 1999; Jomelli and Bertran, 2001). Research conducted on experimental sites in Switzerland (Sovilla et al., 2015; Köhler et al., 2018) or from Canada, Japan, and the European Alps field surveys (Mc Clung and Gauer, 2018) showed weak links between avalanche deposit size, path slope, and avalanche maximum frontal speed. However, morphological factors driving the volumetric characteristics of avalanche deposits have never been explored in a systematic way on the basis of a large dataset. Here, the objective is to exclusively examine the relationship between avalanche path morphology and snow avalanche deposit volumes. Using an exceptional sample of 1491 snow avalanche deposits documented from 2003 to 2018 on 77 avalanche paths from the French Alps and using simple (descriptive) to advanced (deep learning) statistical techniques, we present the first detailed quantification of how avalanche path morphology impacts snow avalanche deposit volumes. Specifically, we show that the control of deposit volumes by path morphology is weak but significant.

2 Data and methodology

2.1 Avalanche deposit volumes

This research was conducted on the upper part of the Maurienne valley in the northern French Alps between the municipalities of Lanslevillard and Bonneval-sur-Arc (Fig. 1). Because of its important number of active avalanche paths, this study area is particularly relevant for our analysis (e.g., Eckert et al., 2009; Favier et al., 2014; Zgheib et al., 2020). The dataset of snow avalanche deposit volumes used in this study is primarily based on the Permanent Avalanche Survey (EPA), which was created at the beginning of the 20th century to document avalanche events as exhaustively as possible on more than 3000 avalanche paths in the French Alps. For each single avalanche event, the geometric size of the deposit is documented, based on a visual estimate carried out by devoted survey operators from the EPA network. For each deposit, the length, the width, and the mean depth are estimated, which eventually provides a volume estimate. The EPA operators are very familiar with the studied paths, including their snowpack-free morphology, and systematically use the same predefined observation point, so as to maximize the accuracy of the estimation, especially the depth of the deposit. The depth of the deposit remains however difficult to estimate as for safety reasons this is not based on direct measurements on the deposit. This is especially problematic in the case of pre-existing successive deposits, but observers try to take such effects into account as much as possible when providing their visual estimates. For each path, EPA operators systematically use the same predefined observation point, so as to maximize the accuracy of the estimation, and each deposit is estimated individually in order to avoid carrying out an estimation on several stacked deposits. However, a further correction and completion work was carried out to develop a more comprehensive and error-free snow avalanche deposit database (Kern et al., 2020). Input errors or outliers introduced within the EPA when old records registered on paper archives were converted to numerical data were spotted and corrected. In addition, a few other snow avalanche events (less than 1% of the total number of events) that were not included in the EPA were added from other sources: operational services in charge of hazard management and a citizen science dataset (<http://www.data-avalanche.org>, last access: 10 October 2021).

From the entire deposit volume dataset available since the beginning of the 20th century (Kern et al., 2020), our study only uses data covering the period from November 2003 to June 2018 (15 “full” avalanche seasons). This limits the biases and inaccuracies induced by the estimation method which were much higher earlier due to less sharp topographical references available to the EPA operators and a less standardized observation protocol until the 2000s (Kern et al., 2020). Thus, our study includes 1491 single avalanche events and associated deposit volumes registered in 77 distinct paths

(Fig. 1). A small part of the avalanches are preventively triggered to protect the road network. According to the EPA database only 53 of the 1491 avalanches were triggered by explosives. Also, a few defense structures are present in the studied paths but not enough to significantly affect our analysis. All in all, avalanche activity in the study area is among the most natural of its kind still existing in the French Alps.

To analyze the possible links between path morphology and deposit volumes, we first computed the interannual mean deposit volume in each of these paths. Then, the same operation was done for both the winter (avalanches that occurred between 1 November and 29 February) and spring (avalanches that occurred from 1 March to 31 May) sub-seasons. Eventually, in order to investigate the potential influence of avalanche activity on deposit volumes, we evaluated the interannual mean number of avalanches per year and path, including within the computation snow avalanche records for which we did not calculate volumes. Seasonal (November–February and March–June) avalanche occurrence rates were also evaluated.

The data from two weather stations handled by Météo-France and located at elevations of 1715 and 2740 m a.s.l. in Bessans for the period 2003–2017, respectively (Fig. 1), were analyzed in order to determine climate conditions that locally prevailed over the study period. This showed that the depth of the local snowpack regularly exceeds 50 cm at 1715 m a.s.l. and 200 cm at 2740 m a.s.l.. The winter (November–February) season is characterized by a cold mean air temperature (-4°C at 1715 m a.s.l., -5.5°C at 2740 m a.s.l.), with heavy precipitation that nearly only falls in the form of snow, but the mean depth of the snowpack remains relatively thin (90 cm at 2740 m a.s.l.). By contrast, the spring season is characterized by higher mean air temperatures (3.5°C at 1715 m a.s.l., -2°C at 2740 m a.s.l.) and the occurrence of significant daily warm spells (daily mean air temperature up to 25°C at 1715 m a.s.l.), which favors the occurrence of rain-on-snow events and wet snow avalanches. The mean daily fresh snowfall is half as much as during the winter season, but the mean snowpack remains thick (170 cm).

2.2 Avalanche path morphology and related volume samples

For each studied EPA path (Fig. 1), a large set of morphological variables was calculated from a 1 m accuracy DEM. We first defined the presumed preferential avalanche flow path (PPFP) within the path. The PPFP is the simplified thalweg of each path. For each PPFP, the length, min, max, and average slope were calculated as well as the min, max, and average elevation and the vertical drop. From the whole extent of each EPA path, surface area, min, max and average slope were calculated (Supplementary Table 1). In addition, the primary orientation of each path was evaluated as a categorical variable with eight possible values corresponding to

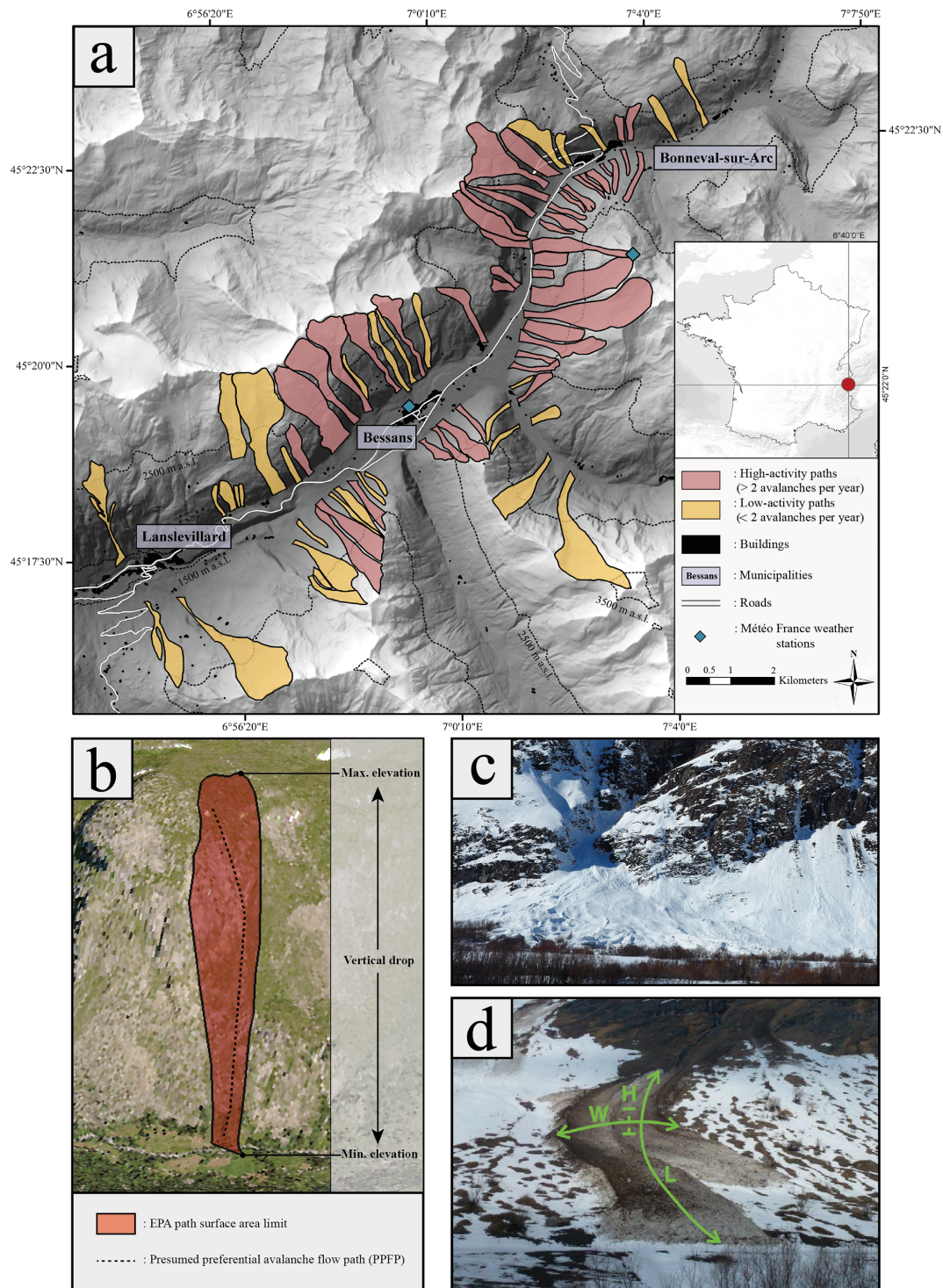


Figure 1. (a) Study area: snow avalanche paths from the EPA database and avalanche activity according to our completed database in the upper part of the Maurienne valley, French Alps, between April 2003 and 2017/18. (b) Example of morphological characteristics of an avalanche path from the EPA database (path no. 44, Bessans). (c) Snow avalanche deposit in Bessans (© INRAE ETNA, 2018). (d) Method for visually estimating the deposit volume. H : height; W : width; L : length (© INRAE ETNA, Bessans, 2019).

the eight cardinal directions: N, NE, E, SE, S, SW, W, and NW. For quantitative analyses, this categorical variable was further transformed into a vector of eight binary variables. Namely, a path got assigned 1 for the binary variable corresponding to its primary orientation (e.g., north) and 0 for the seven other binary variables corresponding to the seven other directions.

The studied paths are characterized by a mean elevation of 2281 m a.s.l. varying from 1936 to 2942 m a.s.l. Concerning the dimensions of the paths, the mean vertical drop is 950 m a.s.l. and the surface area varies from 3 to 172 ha. The mean path slopes vary from 26 to 49° with a mean slope of 39° (Table S1 in the Supplement). The paths are mostly oriented either south or northwest. None of the paths present a northeast orientation. (Fig. S1 in the Supplement).

2.3 Statistical analyses

One-way analyses of variance (ANOVAs) were first conducted to evaluate the significance of the partition into two subsamples (winter and spring deposits, and “high-frequency paths” with more than two events per year versus “low-frequency paths” with fewer than two events per year). In other words, we investigated whether or not the variability of deposit volumes by path morphology varies (i) according to the season, and hence prevailing snow and weather conditions and related types of avalanche activity, and (ii) according to path mean activity.

To shed light on the control of deposit volumes by avalanche path morphology, Spearman correlation coefficients (r) were first calculated between each descriptive variable of path morphology and the annual (November–June), winter (November–February) and spring (March–June) deposit volume data series. This coefficient was chosen rather than the more classical Pearson one because the statistical distributions of deposit volumes are asymmetric, with extreme values strongly departing from the mean (Fig. 2). With a dataset of 77 individuals (one mean deposit volume per avalanche path), the relationship is significant at the 0.05 level if the Spearman coefficient is greater than 0.25 in absolute value.

Stepwise linear regressions were undertaken in order to determine the combination of morphological variables that best explain the variability of mean deposit volumes. This was done first using the complete database of 77 paths and 1491 deposit volumes. Afterwards, distinct linear models were fitted (i) on the 649 snow avalanche deposits recorded in 68 of these paths during the November–February winter season and (ii) on the 842 snow avalanche deposits recorded in 73 of these paths during the March–June spring season. With a stepwise procedure, the set of predictive variables retained is selected by an automatic sequence of Fisher F tests. Starting from an initial null model with no covariates and then comparing the explanatory power of incrementally larger and smaller models, it combines forward selection and

backward elimination. Forward selection tests the variables one by one and includes them if they are statistically significant based on the p value of the F statistics, while backward elimination starts with all candidate variables and tests them one by one for statistical significance, deleting any of them that are not significant on the basis of the p value of the F statistics. We used the classical 0.05 and 0.01 probability thresholds for forward selection and backward elimination, respectively. However, before running the stepwise regression, a variable preselection was completed. This was made to avoid too much redundancy within potential predictors, which can lead to masks and numerical instabilities during the stepwise selection. To this aim, Pearson’s correlation ρ was calculated between all pairs of potential morphological variables (Table S2 in the Supplement). Among the strongly correlated variables ($\rho > 0.8$ and $p < 0.001$), we kept as a potential predictor only the one with the highest marginal correlation with deposit volumes.

Eventually, in order to account for potential nonlinear relationships between morphologic variables and snow avalanche deposits, more flexible neural network models were constructed, again both for the full dataset and for the winter–spring sub-seasons. For the three datasets, the full set of 16 morphological variables previously presented was used as potential covariates (eight quantitative variables and the eight binary variables corresponding to orientations). Both standard three-layer and advanced eight-layer (deep learning) neural networks were developed. Models were trained using 70 % of the data randomly selected from the analyzed sample of paths/mean deposit volumes with the Levenberg–Marquardt algorithm (Moré, 1978). Validation was carried out with 15 % of the data, and model testing was carried out with the remaining 15 % of the data. This typical machine learning approach allows both progressive improvement of the model with cross validations and limitation of overfitting. To account for the variability of obtained relations, 100 bootstrap iterations were conducted, varying data partition into calibration, validation, and test subsamples and initial conditions for the Levenberg–Marquardt algorithm.

3 Results

3.1 High spatiotemporal variability of deposit volumes and avalanche activity

High spatial variability in deposit volumes is observed, with the path mean deposit volume over the study period varying from 1400 to 49 800 m³, the “mean of the mean” path deposit volumes being 15 100 m³ (Fig. 2). If one looks further in the distribution of mean deposit volumes, the sample mean and dispersion are significantly higher (one-way ANOVA $p = 0.010$) for the winter season (path mean deposit volume = 18 100 m³) than for the spring season (path mean deposit volume = 12 847 m³).

Table 1. Spearman correlation r between morphologic variables and avalanche deposit volumes. Values in bold are significant at the 0.05 level.

	Min elevation	Max elevation	Vertical drop	Mean elevation	Min slope	Max slope	Mean slope	Surface area	NW	N	NE	E	SE	S	SW	W
Annual	0.31	0.46	0.41	0.51	-0.31	0.24	-0.05	0.48	-0.20	0.11		0.15	0.28	0.16	0.05	0.02
Winter	0.38	0.52	0.48	0.55	-0.40	0.25	-0.12	0.52	-0.12	-0.08		0.28	0.22	-0.17	-0.02	0.19
Spring	0.28	0.35	0.27	0.43	-0.24	0.19	0.10	0.34	-0.01	0.07		-0.05	0.19	0.16	0.06	-0.09

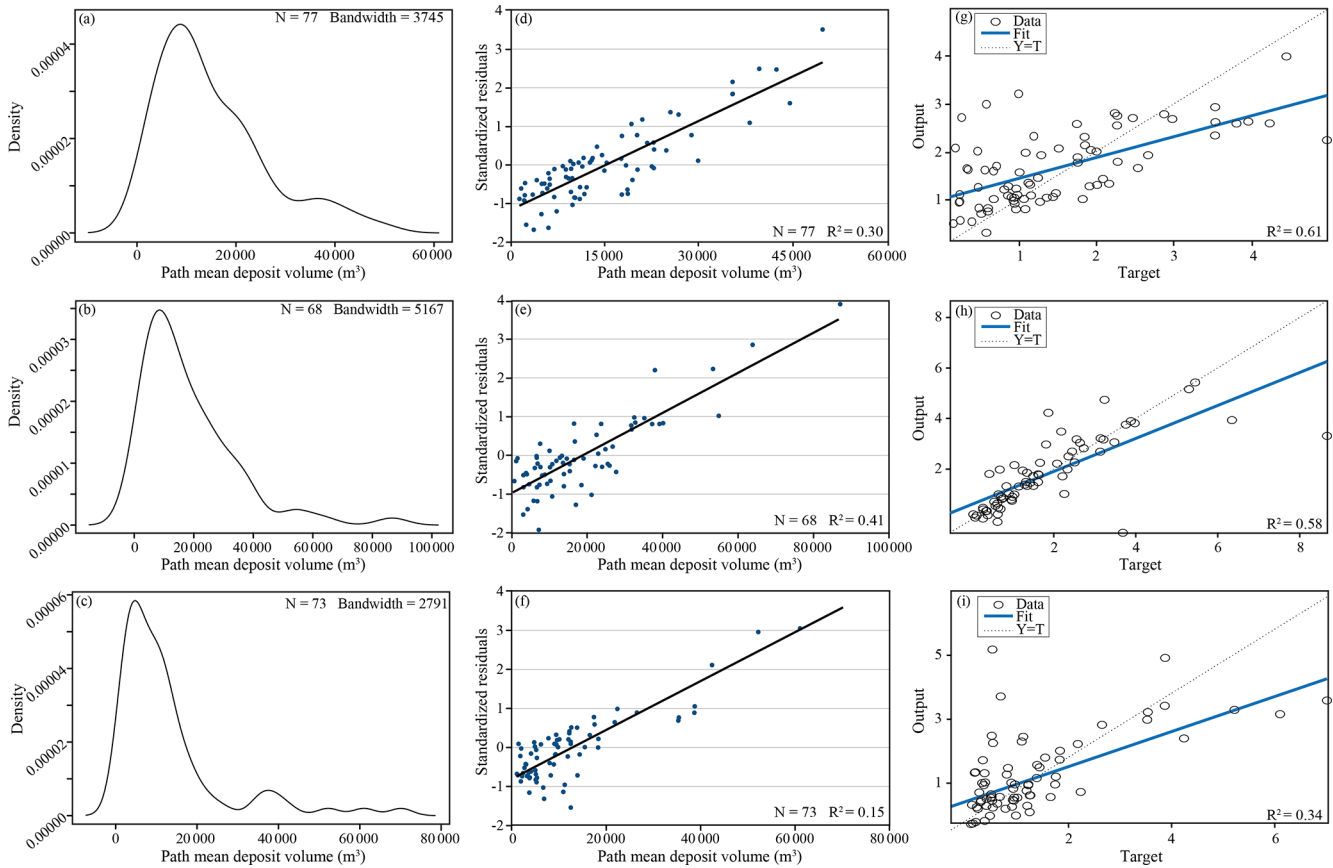


Figure 2. Statistical characteristics of snow avalanche deposit volumes. Kernel density estimation of mean path deposit volumes at the annual November–June timescale (a), in winter, November–February (b) and in spring, March–June (c). Standardized residuals of stepwise linear regression results between path mean deposit volumes and path morphological variables for annual (d), winter, (e), and spring (f). Linear correlation between observed deposit volume and values predicted by one neural network for the annual (g), winter (h), and spring (i) dataset (Y is predictor and T is target).

Concerning the temporal variability, both the years 2003 and 2004 recorded particularly small mean deposit volumes ($< 4000 \text{ m}^3$). On the other hand, 2006 and 2014 recorded particularly large mean deposit volumes, with annual means of $35\,800$ and $47\,900 \text{ m}^3$, respectively. Moreover, a substantial proportion of the largest deposit volumes occurred in 2017.

A strong variability in avalanche activity is observed between 2003 and 2017, with 30 low active paths (fewer than two avalanche events per year) and 47 active paths (more than two events per year). On average, about 96 events with documented deposit volumes are triggered per year in the

study area. The avalanche year 2017 was particularly active, with 526 events with documented deposits. Some of the paths are particularly active and show more than 35 events over the studied period. Paths located at Bonneval-sur-Arc and Bessans show more avalanches than those at Lanslevillard, in the lowest elevation part of the study area. Avalanche activity is more abundant in the spring season (860 avalanches with documented deposits) than in the winter season (631 avalanches with documented deposits). Considering the frequency indicates that the high-frequency paths show larger mean deposit volumes ($16\,800 \text{ m}^3$) than low-frequency paths ($12\,900 \text{ m}^3$). This observation is validated by a one-way

ANOVA ($p = 0.029$). A significant relationship exists between winter deposit volumes and the mean annual frequency of each path ($r = 0.35$; $p < 0.001$).

3.2 Relationships between path morphology and deposit volumes

Avalanche deposit volumes are significantly correlated with several morphological variables and with a southeast orientation. For the full (annual) dataset, the best pairwise correlations are with path mean elevation ($r = 0.51$), surface area ($r = 0.48$), and max elevation ($r = 0.46$). However, a clear distinction between the two seasons is observed (Table 1). For the winter season, the correlations are significant ($r > 0.25$) between deposit volumes and seven morphological variables among which mean elevation and surface area are the best predictors. The winter deposits reveal a significant correlation with an east orientation. In addition, deposit volumes are also influenced by frequency, through the negative correlation of frequency with min slope ($r = -0.24$, $p < 0.05$) and positive correlation with max slope variables ($r = 0.51$; $p < 0.05$). By contrast, correlations between path morphological variables and deposit volumes are significant in the spring season for five variables only, and correlations are lower. Slope variables are not significantly correlated with deposit volumes for the spring season.

Stepwise linear regressions (Fig. 2) highlight the combined effects of morphological variables on deposit volumes. For the three analyzed datasets (annual, winter, and spring) none of the variables related to the PFP are selected because of low or non-significant correlation values. By contrast, all selected variables are relative to the path surfaces: min elevation, mean elevation, min slope, max slope, mean slope, surface area, and orientation. Max elevation and vertical drop were removed as they were too strongly correlated. For the annual dataset, the retained model includes three positive significant morphological variables increasing the deposit volumes: mean elevation and north and southeast orientation. However, R^2 remains low with only 30 % of the deposit volume variability explained by these variables. The seasonal stepwise linear regression shows interesting differences between the two seasons. The retained models include four significant morphological variables increasing the deposit volumes for the winter season: mean elevation and east, southeast, and west orientation. Only one positive variable is retained in the model for the spring season: mean elevation. Resulting R^2 is higher for deposits in winter ($R^2 = 0.41$) than for spring deposits ($R^2 = 0.15$), which remain particularly low (Fig. 2).

Neural networks significantly enhance the predictive power, with higher R^2 values between the full set of morphological variables and deposit volumes, for both annual and seasonal datasets. With the three-layer models, depending on the bootstrap iteration, the best 2.5 % of the models reach R^2 of 0.46 (Table S3 in the Supplement), and, again, the best fit

is obtained for the winter season ($R^2 = 0.57$ for the 2.5 % best models, versus 0.37 for the spring season). Switching to the even more flexible deep-learning-based eight-layer models even enhances these values to $R^2 = 0.76$ and 0.54 for the 2.5 % best models in the winter and spring seasons, respectively. However, on average for the 100 bootstrap iterations, retained neural network models do not reach high predictive power. For instance, the median R^2 value among the eight-layer models fitted on the annual sample is only 0.28. By contrast, as soon as a reasonably good agreement between observations and prediction is obtained (Fig. 2 in which models providing $R^2 = 0.61$, $R^2 = 0.58$, and $R^2 = 0.34$ are shown), discrepancies are low all over the calibration, validation, and test samples, with a nearly unbiased, Gaussian-like distribution of residuals (Fig. S2 in the Supplement). This all confirms the weak but significant control of deposit volumes by morphological variables. The increment in predictive power with regards to linear models also suggests that this control relies at least partially on non-linear relationships.

4 Discussion, conclusion, and outlook

In this study, using a unique dataset from 77 paths located in the upper part of the Maurienne valley, we explored the influence of snow avalanche path morphology on deposit volumes. Using descriptive statistics, we showed a significant positive relationship between avalanche path morphology and the mean deposit volume at the path scale. The best simple relationships were observed with path mean elevation ($r = 0.51$) and surface area ($r = 0.48$): a large surface at high altitude favors important snow accumulation and large deposits. The seasonal subsampling analysis revealed differences in the strength of the correlation between volume and path morphometric variables, with higher values for winter than for spring. This may be due to climate conditions that strongly control spring deposit volumes (e.g., wet snow avalanches are released as soon as cohesion drops within the snowpack due to the apparition of sufficient liquid water and rather independently of the snow mass. Only winter deposits show a weak correlation with an orientation: east ($r = 0.28$). This correlation shows that winter deposit volumes may be influenced by prevailing climatic conditions. Specifically, we suspect that the significant influence of orientation reveals wind impacts. Thus a prevailing wind from the west during the winter season may cause large accumulations of snow on the east-oriented hillside, later favoring important deposit volumes. Such a hypothesis remains speculative however without direct wind measurements at high elevations.

Linear regression did not improve the relationships much, with no more than 30 % of the annual deposit volume variability explained by a combination of morphological variables, increasing to 41 % for winter deposit volume variability but decreasing to 15 % of the spring deposit volume vari-

ability. In the three cases, mean elevation is retained as a relevant predictor, which underlines the relevance of snow availability in relation to elevation concerning the determination of deposit volumes. Orientation variables are only retained by the annual and winter deposit model. Winter deposits show a strong positive relationship with east, south-east, and west path orientations. This indicates how important the solar radiation and/or the path positioning with respect to the prevailing wind direction may be to generate the snowpack and then produce instabilities, later influencing volume deposits. However, there are no reliable data on wind direction or speed at the scale of a massif, so it is not possible to precisely characterize the wind contribution to our study. The use of a more flexible neural network approach leads to significant improvements, notably with some deep-learning-based models, but, overall, the power of morphological variables to predict snow avalanche deposit volumes remains somewhat limited. In light of these results, we suggest that path morphology controls deposit volumes significantly but weakly, and at least partially on the basis of non-linear relationships. This could be confirmed (or not) with further studies in different mountain areas where topography and/or avalanche activity regime is different. Additional morphological descriptors, such as convexity or concavity of the starting zone, could slightly improve the predictive power of the models. However, we suspect that no matter which descriptors are used, the control of the deposit volume by path morphology remains weak.

Mean avalanche frequency appears as an important factor to explain these results. Indeed, slope variables partly influence the annual frequency and indirectly influence the deposit volumes. High-frequency paths (more than two events per year) present a steeper slope than low-frequency paths (fewer than two events per year) paths: 40 and 37°, respectively. Also, high-frequency paths show larger path mean deposit volumes (16 800 m³) than low-frequency paths (12 900 m³). These somewhat counterintuitive results are in line with those of Sovilla et al. (2010) that highlighted a negative correlation between slope angle and deposit depths, partly affected by the avalanche activity.

We interpret the weak relationship between mean path deposit volumes and morphological variables to be partly due to the predominant control of avalanche activity by snow mechanical behavior. This especially occurs through the mechanical thresholds involved in avalanche-triggering processes (Gaume et al., 2012, Li et al., 2020), which are primarily related to snow depth and stratigraphy in the release area as well as to the slope and ground roughness in the release area. This may explain why snow avalanche deposit volumes do not seem that much affected by avalanche path size, for example. Also, mechanical release thresholds may explain the significant variations we observed in the control of winter or spring deposits by path morphology, since, from one season to another, different snow depths and stratigraphy may lead to release for different slopes and elevations as soon as the

critical stress value is exceeded. Differences in the snowpack characteristics may also explain why the winter deposit mean volumes present more important values. Indeed the winter snowpack is less stable and prone to large avalanche triggering, in other words snow storms are frequent in winter and favor major instabilities and large snow avalanches. Note that we did not take into account in our study the roughness of the ground, which was not possible to accurately document over the full sample of paths, but this could be an insightful perspective for further work.

More widely, we speculate that the weak relationship between volume and morphological variables may be due to an important control by climate conditions since variations in snowpack characteristics determine avalanche triggering and flow properties (Steinkogler et al., 2014, Kölher et al., 2018), and notably snow entainment and deposition during the flow, which ultimately determines deposit volumes. Recent climate change thus impacts snow avalanche frequency, magnitude, seasonality, and localization, leading, e.g., to an increasing proportion of wet snow avalanches documented in the French Alps between 1958 and 2009 (Naaim et al., 2016). Our approach should therefore now be extended to simultaneously take into account the control of deposit volumes by morphological and meteorological variables on a wider study area and how these controls evolve as climate change goes on. Such an approach combining morphological and climatic variables has, for example, already been applied in Svalbard (Eckerstorfer and Christiansen., 2011) or for debris flows in the French Alps (Jomelli et al., 2019).

Data availability. The whole EPA avalanche data are freely available at https://www.avalanches.fr/static/1public/epaclpa/EPA_listes_evenements/ (INRAE, 2021). The dataset of mean deposit volumes and morphological variables analyzed in this study can be requested from Hippolyte Kern.

Supplement. The supplement related to this article is available online at: <https://doi.org/10.5194/tc-15-4845-2021-supplement>.

Author contributions. VJ and NE designed this research. MD provided the EPA dataset. HK, VJ, NE, and DG performed the analyses. HK wrote the manuscript on the basis of the input of all co-authors.

Competing interests. The contact author has declared that neither they nor their co-authors have any competing interests.

Disclaimer. Publisher's note: Copernicus Publications remains neutral with regard to jurisdictional claims in published maps and institutional affiliations.

Acknowledgements. Hippolyte Kern holds a PhD grant from Université Paris-1 Panthéon-Sorbonne. This work has received financial support from LabEx DynamiTe (ANR-11-LABX-0046) as part of the “Investissement d’Avenir” program and from INRAE, member of Labex OSUG@2020. The numerous people from ONF-RTM and INRAE that contributed to the EPA survey with the financial support of the French Ministry of the Environment are acknowledged.

Review statement. This paper was edited by Alexandre Langlois and reviewed by Karl W. Birkeland and one anonymous referee.

References

- Bartelt, P. and McArdell, B. W.: Granulometric investigations of snow avalanches, *J. Glaciol.*, 55, 829–833, <https://doi.org/10.3189/002214309790152384>, 2009.
- Beniston, M., Farinotti, D., Stoffel, M., Andreassen, L. M., Coppola, E., Eckert, N., Fantini, A., Giacona, F., Hauck, C., Huss, M., Huwald, H., Lehning, M., López-Moreno, J.-I., Magnusson, J., Marty, C., Morán-Tejeda, E., Morin, S., Naaim, M., Provenzale, A., Rabatel, A., Six, D., Stötter, J., Strasser, U., Terzago, S., and Vincent, C.: The European mountain cryosphere: a review of its current state, trends, and future challenges, *The Cryosphere*, 12, 759–794, <https://doi.org/10.5194/tc-12-759-2018>, 2018.
- Eckert, N., Parent, E., Faug, T., and Naaim, M.: Bayesian optimal design of an avalanche dam using a multivariate numerical avalanche model, *Stoch. Env. Res. Risk A.*, 23, 1123–1141, 2009.
- Eckerstorfer, M. and Christiansen, H. H.: Topographical and meteorological control on snow avalanching in the Longyearbyen area, central Svalbard 2006–2009, *Geomorphology*, 134, 186–196, <https://doi.org/10.1016/j.geomorph.2011.07.001>, 2011.
- Favier, P., Eckert, N., Bertrand, D., and Naaim, M.: Sensitivity of avalanche risk evaluation to vulnerability relations, *Cold Reg. Sci. Technol.*, 108, 163–177, <https://doi.org/10.1016/j.coldregions.2014.08.009>, 2014.
- Gaume J., Chambon G., Eckert N., and Naaim M.: Relative influence of mechanical and meteorological factors on avalanche release depth distributions: An application to French Alps, *Geophys. Res. Lett.*, 39, L12401, <https://doi.org/10.1029/2012GL051917>, 2012.
- INRAE: EPA database, https://www.avalanches.fr/static/1public/epaclpa/EPA_listes_evenements/, last access: 10 October 2021.
- Jomelli V.: Les effets de la fonte sur la sédimentation de dépôts d’avalanche de neige chargée dans le massif des Ecrins (Alpes françaises), *Géomorphologie*, 5, 39–57, 1999.
- Jomelli, V. and Bertran, P.: Wet snow avalanche deposits in the French Alps: structure and sedimentology, *Geogr. Ann.*, 83, 15–28, <https://doi.org/10.1111/j.0435-3676.2001.00141.x>, 2001.
- Jomelli, V., Pavlova, I., Giacona, F., Zgheib, T., and Eckert, N.: Respective influence of geomorphologic and climate conditions on debris-flows occurrence in the Northern French Alps, *Landslides*, 16, 1871–1883, <https://doi.org/10.1007/s10346-019-01195-7>, 2019.
- Kern, H., Jomelli, V., Eckert, N., Grancher, D., and Deschâtres, M.: Variabilité des volumes des dépôts d’avalanche et relations avec la morphologie des couloirs d’écoulement (Bessans, Savoie, France), *Géomorphologie*, 26, 129–140, <https://doi.org/10.4000/geomorphologie.14361>, 2020.
- Kölher, A., McElwaine, J. N., and Sovilla, B.: GEODAR Data and the flows regimes of snow avalanches, *J. Geophys. Res.-Earth*, 123, 1272–1294, <https://doi.org/10.1002/2017JF004375>, 2018.
- Leone, F., Colas, A., Garcin, Y., Eckert, N., Jomelli, V., and Gherardi, M.: Le risque avalanche sur le réseau routier alpin français. Évaluation des impacts et cartographie de la perte d’accessibilité territoriale, *J. Alp. Res.*, 102, 1760–17426, <https://doi.org/10.4000/rga.2491>, 2014.
- Li, X., Sovilla, B., Jiang, C., and Gaume, J.: The mechanical origin of snow avalanche dynamics and flow regime transitions, *The Cryosphere*, 14, 3381–3398, <https://doi.org/10.5194/tc-14-3381-2020>, 2020.
- Mc Clung, D. M. and Gauer, P.: Maximum frontal speeds, alpha angles and deposit volumes of flowing snow avalanches, *Cold Reg. Sci. Technol.*, 153, 78–85, <https://doi.org/10.1016/j.coldregions.2018.04.009>, 2018.
- Moré, J. J.: The Levenberg–Marquardt algorithm: implementation and theory, edited by: Watson, G. A., *Numerical Analysis*, 630, 106–116, 1978.
- Naaim, M., Eckert, N., Giraud, G., Faug, T., Chambon, G., Naaim-Bouvet, F., and Richard, D.: Impact du réchauffement climatique sur l’activité avalancheuse et multiplication des avalanches humides dans les Alpes françaises, *Houille Blanche*, 6, 12–20, <https://doi.org/10.1051/lhb/2016055>, 2016.
- Sovilla, B., McElwaine, J. N., Schaer, M., and Vallet, J.: Variation of deposition depth with slope angle in snow avalanches: Measurement from Vallée de la Sionne, *J. Geophys. Res.*, 115, 13, <https://doi.org/10.1029/2009JF001390>, 2010.
- Sovilla, B., McElwaine, J. N., and Louge, M. Y.: The structure of powder snow avalanches, *C. R. Phys.*, 16, 97–104, <https://doi.org/10.1016/j.crhy.2014.11.005>, 2015.
- Steinkogler, W., Sovilla, B., and Lehning, M.: Influence of snow cover properties on avalanches dynamics, *Cold Reg. Sci. Technol.*, 97, 121–131, <https://doi.org/10.1016/j.coldregions.2013.10.002>, 2014.
- Zgheib, T., Giacona, F., Granet-Abisset, A. N., Morin, S., and Eckert, N.: One and a half century of avalanche risk to settlements in the upper Maurienne valley inferred from land cover and socio-environmental changes, *Global Environ. Change*, 65, 102149, <https://doi.org/10.1016/j.gloenvcha.2020.102149>, 2020.